

District I
1625 N. French Dr., Hobbs, NM 88240
Phone:(575) 393-6161 Fax:(575) 393-0720

District II
811 S. First St., Artesia, NM 88210
Phone:(575) 748-1283 Fax:(575) 748-9720

District III
1000 Rio Brazos Rd., Aztec, NM 87410
Phone:(505) 334-6178 Fax:(505) 334-6170

District IV
1220 S. St Francis Dr., Santa Fe, NM 87505
Phone:(505) 476-3470 Fax:(505) 476-3462

State of New Mexico
Energy, Minerals and Natural Resources
Oil Conservation Division
1220 S. St Francis Dr.
Santa Fe, NM 87505

Form C-101
August 1, 2011
Permit 268345

APPLICATION FOR PERMIT TO DRILL, RE-ENTER, DEEPEN, PLUGBACK, OR ADD A ZONE

1. Operator Name and Address REGENERATION ENERGY, CORPORATION P.O. Box 210 Artesia, NM 88210		2. OGRID Number 280240
4. Property Code 325740		3. API Number 30-015-46055
5. Property Name BLUE MOON STATE UNIT		6. Well No. 001H

7. Surface Location

UL - Lot	Section	Township	Range	Lot Idn	Feet From	N/S Line	Feet From	E/W Line	County
M	16	26S	27E		310	S	660	W	Eddy

8. Proposed Bottom Hole Location

UL - Lot	Section	Township	Range	Lot Idn	Feet From	N/S Line	Feet From	E/W Line	County
D	16	26S	27E	D	330	N	660	W	Eddy

9. Pool Information

WELCH;DELAWARE	64030
----------------	-------

Additional Well Information

11. Work Type New Well	12. Well Type OIL	13. Cable/Rotary	14. Lease Type State	15. Ground Level Elevation 3251
16. Multiple N	17. Proposed Depth 8832	18. Formation Delaware	19. Contractor	20. Spud Date 6/20/2019
Depth to Ground water		Distance from nearest fresh water well		Distance to nearest surface water

☒ We will be using a closed-loop system in lieu of lined pits

21. Proposed Casing and Cement Program

Type	Hole Size	Casing Size	Casing Weight/ft	Setting Depth	Sacks of Cement	Estimated TOC
Surf	12.25	9.625	36	2100	628	0
Prod	7.875	7	26	3500	100	0
Prod	7.875	5.5	17	8832	1465	0

Casing/Cement Program: Additional Comments

Set 20 inch 57# conductor pipe at 40 ft . Drill 12.25 hole to 2060-2100 brine water. Run 9 5/8 36# J55 LTC and cement to surface in 1 stage. Drill 7 7/8 vertical, curve and lateral with cut brine to approx 8832 ft MD. Run 7 inch 26# J-55 to 3500 tapered down to 5 1/2 17# J-55 to TD. Cement to surface with 1 stage.

22. Proposed Blowout Prevention Program

Type	Working Pressure	Test Pressure	Manufacturer
Double Ram	3000	3000	Cameron

23. I hereby certify that the information given above is true and complete to the best of my knowledge and belief. I further certify I have complied with 19.15.14.9 (A) NMAC <input checked="" type="checkbox"/> and/or 19.15.14.9 (B) NMAC <input checked="" type="checkbox"/> if applicable. Signature:	OIL CONSERVATION DIVISION
Printed Name: Electronically filed by Joel W Miller	Approved By: Raymond Podany
Title: Secretary/Treasurer	Title: Geologist
Email Address: jmillier@pvtm.net	Approved Date: 6/10/2019 Expiration Date: 6/10/2021
Date: 6/7/2019 Phone: 575-736-3535	Conditions of Approval Attached

DISTRICT I
1625 N. FRENCH DR., HOBBS, NM 88240
Phone: (505) 393-0181 Fax: (505) 393-0720

DISTRICT II
811 S. FIRST ST., ARTESIA, NM 88210
Phone: (505) 748-1283 Fax: (505) 748-0720

DISTRICT III
1000 RIO BRAZOS RD., AZTEC, NM 87410
Phone: (505) 334-6178 Fax: (505) 334-6170

DISTRICT IV
1220 S. ST. FRANCIS DR., SANTA FE, NM 87505
Phone: (505) 476-3460 Fax: (505) 476-3462

State of New Mexico
Energy, Minerals & Natural Resources Department
OIL CONSERVATION DIVISION
1220 SOUTH ST. FRANCIS DR.
Santa Fe, New Mexico 87505

Form C-102
Revised August 1, 2011
Submit one copy to appropriate
District Office

☐ AMENDED REPORT

WELL LOCATION AND ACREAGE DEDICATION PLAT

API Number	Pool Code	Pool Name
Property Code	Property Name BLUE MOON STATE	Well Number 1H
OGRID No.	Operator Name REGENERATION ENERGY CORPORATION	Elevation 3251.8'

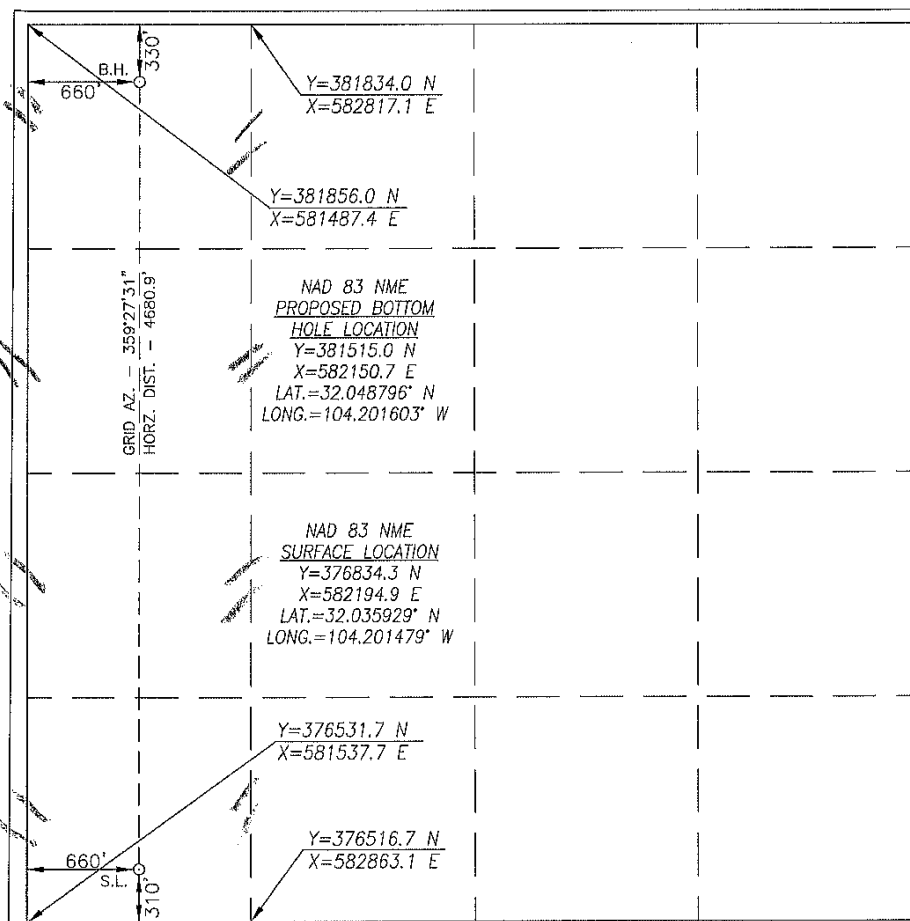
Surface Location

UL or lot No.	Section	Township	Range	Lot Idn	Feet from the	North/South line	Feet from the	East/West line	County
M	16	26-S	27-E		310	SOUTH	660	WEST	EDDY

Bottom Hole Location If Different From Surface

UL or lot No.	Section	Township	Range	Lot Idn	Feet from the	North/South line	Feet from the	East/West line	County
D	16	26-S	27-E		330	NORTH	660	WEST	EDDY
Dedicated Acres 160	Joint or Infill	Consolidation Code	Order No.						

NO ALLOWABLE WILL BE ASSIGNED TO THIS COMPLETION UNTIL ALL INTERESTS HAVE BEEN CONSOLIDATED
OR A NON-STANDARD UNIT HAS BEEN APPROVED BY THE DIVISION



OPERATOR CERTIFICATION

I hereby certify that the information herein is true and complete to the best of my knowledge and belief, and that this organization either owns a working interest or unleased mineral interest in the land including the proposed bottom hole location or has a right to drill this well at this location pursuant to a contract with an owner of such mineral or working interest, or to a voluntary pooling agreement or a compulsory pooling order heretofore entered by the division.

William Miller 6/6/19
Signature Date
Printed Name
E-mail Address
wmiller@putn.net

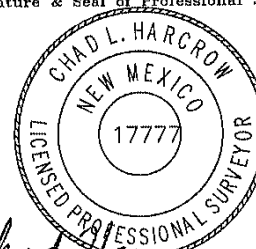
SURVEYOR CERTIFICATION

I hereby certify that the well location shown on this plat was plotted from field notes of actual surveys made by me or under my supervision, and that the same is true and correct to the best of my belief.

MAY 29, 2019

Date of Survey

Signature & Seal of Professional Surveyor



Chad Harcrow 6/5/19
Certificate No. CHAD HARCROW 17777
W.O. #19-997 DRAWN BY: CD

District I
 1625 N. French Dr., Hobbs, NM 88240
 Phone:(575) 393-6161 Fax:(575) 393-0720
District II
 811 S. First St., Artesia, NM 88210
 Phone:(575) 748-1283 Fax:(575) 748-9720
District III
 1000 Rio Brazos Rd., Aztec, NM 87410
 Phone:(505) 334-6178 Fax:(505) 334-6170
District IV
 1220 S. St Francis Dr., Santa Fe, NM 87505
 Phone:(505) 476-3470 Fax:(505) 476-3462

State of New Mexico

Energy, Minerals and Natural Resources

Oil Conservation Division

1220 S. St Francis Dr.

Santa Fe, NM 87505

Form APD Comments

Permit 268345

PERMIT COMMENTS

Operator Name and Address: REGENERATION ENERGY, CORPORATION [280240] P.O. Box 210 Artesia, NM 88210	API Number: 30-015-46055
	Well: BLUE MOON STATE UNIT #001H

Created By	Comment	Comment Date
jwmiller	Regeneration Energy Corp has conducted a review to determine if an H2S contingency plan is required for the above referenced well. We were able to conclude that any potential hazardous volume would be minimal. H2S concentrations of wells in this area from surface to TD are low enough; therefore we do not believe that an H2S Contingency Plan would be necessary.	6/6/2019
rpodany	BHL problem. BHL and BHL completion must be same. Leaving BHL blank generates bad input. Drill fluid for surface casing must be fresh water not brine.	6/7/2019

District I
1625 N. French Dr., Hobbs, NM 88240
Phone:(575) 393-6161 Fax:(575) 393-0720
District II
811 S. First St., Artesia, NM 88210
Phone:(575) 748-1283 Fax:(575) 748-9720
District III
1000 Rio Brazos Rd., Aztec, NM 87410
Phone:(505) 334-6178 Fax:(505) 334-6170
District IV
1220 S. St Francis Dr., Santa Fe, NM 87505
Phone:(505) 476-3470 Fax:(505) 476-3462

State of New Mexico
Energy, Minerals and Natural Resources
Oil Conservation Division
1220 S. St Francis Dr.
Santa Fe, NM 87505

Form APD Conditions

Permit 268345

PERMIT CONDITIONS OF APPROVAL

Operator Name and Address: REGENERATION ENERGY, CORPORATION [280240] P.O. Box 210 Artesia, NM 88210		API Number: 30-015-46055
		Well: BLUE MOON STATE UNIT #001H
OCD Reviewer	Condition	
rpodany	Will require a directional survey with the C-104	
rpodany	Cement is required to circulate on both surface and intermediate1 strings of casing	