

District I1625 N. French Dr., Hobbs, NM 88240
Phone: (575) 393-6161 Fax: (575) 393-0720**District II**811 S. First St., Artesia, NM 88210
Phone: (575) 748-1283 Fax: (575) 748-9720**District III**1000 Rio Brazos Road, Aztec, NM 87410
Phone: (505) 334-6178 Fax: (505) 334-6170**District IV**1220 S. St. Francis Dr., Santa Fe, NM 87505
Phone: (505) 476-3460 Fax: (505) 476-3462

State of New Mexico

Energy Minerals and Natural Resources

Oil Conservation Division

1220 South St. Francis Dr.

Santa Fe, NM 87505

Form C-101
Revised July 18, 2013☐ AMENDED REPORT**APPLICATION FOR PERMIT TO DRILL, RE-ENTER, DEEPEN, PLUGBACK, OR ADD A ZONE**

¹ Operator Name and Address FAE II Operating LLC 11757 Katy Freeway, Suite 1000, Houston, TX 77079		² OGRID Number 329326
		³ API Number 30-025-26490
⁴ Property Code	⁵ Property Name KIMMY K	⁶ Well No. 2

7. Surface Location

UL - Lot	Section	Township	Range	Lot Idn	Feet from	N/S Line	Feet From	E/W Line	County
F	29	24S	37E		2310	N	1650	W	LEA

8. Proposed Bottom Hole Location

UL - Lot	Section	Township	Range	Lot Idn	Feet from	N/S Line	Feet From	E/W Line	County
F	29	24S	37E		2310	N	1650	W	LEA

9. Pool Information

Pool Name LANGLIE MATTIX;7 RVRS-Q-GRAYBURG	Pool Code 37240
--	---------------------------

Additional Well Information

¹¹ Work Type E	¹² Well Type O	¹³ Cable/Rotary R	¹⁴ Lease Type P	¹⁵ Ground Level Elevation 3282'
¹⁶ Multiple No	¹⁷ Proposed Depth 3660'	¹⁸ Formation QUEEN	¹⁹ Contractor SwabCo	²⁰ Spud Date 2/7/2021
Depth to Ground water		Distance from nearest fresh water well		Distance to nearest surface water

☒ We will be using a closed-loop system in lieu of lined pits**21. Proposed Casing and Cement Program**

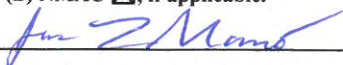
Type	Hole Size	Casing Size	Casing Weight/ft	Setting Depth	Sacks of Cement	Estimated TOC
Surface	12"	8-5/8"	23#/ft	421'	350	Surface
Prod	7-7/8"	4-1/2"	9.5#/ft	3660'	650	Surface

Casing/Cement Program: Additional Comments

--

22. Proposed Blowout Prevention Program

Type	Working Pressure	Test Pressure	Manufacturer
Double Ram	3000	3000	Unknown

²³ I hereby certify that the information given above is true and complete to the best of my knowledge and belief. I further certify that I have complied with 19.15.14.9 (A) NMAC <input checked="" type="checkbox"/> and/or 19.15.14.9 (B) NMAC <input checked="" type="checkbox"/> if applicable. Signature:  Printed name: Jessica LaMarro Title: Geologist E-mail Address: jessica@faenergyus.com Date: 1/21/2021	OIL CONSERVATION DIVISION	
	Approved By:	
	Title:	
	Approved Date:	Expiration Date:
	Conditions of Approval Attached	
	Phone: 832-706-0051	

NEW MEXICO OIL CONSERVATION COMMISSION
WELL LOCATION AND ACREAGE DEDICATION PLAT

Form C-102
Supersedes C-128
Effective 1-1-85

OGRID: 329326

All distances must be from the outer boundaries of the Section

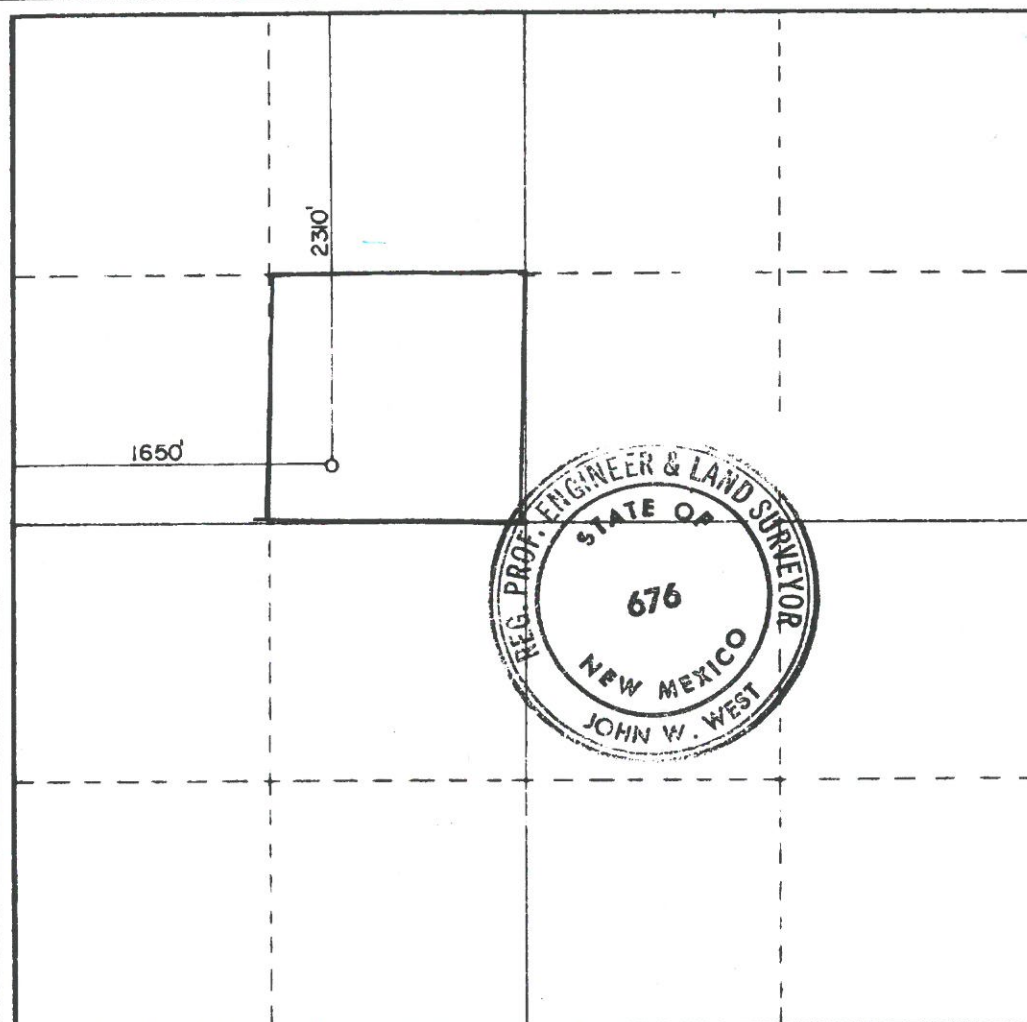
Operator FAE II Operating, LLC		Lease Kimmy K		Well No. 2	
Section 29	Township 24 SOUTH	Range 37 EAST	County LEA		
Actual Well Location of Well: 2310 feet from the NORTH line and 1650 feet from the WEST line					
Ground Level Elev. 3282.0	Producing Formation Seven Rivers Queen	Block Langlie Mattix (37240)	Dedicated Acreage: 40		

1. Outline the acreage dedicated to the subject well by colored pencil or hatchure marks on the plat below.
2. If more than one lease is dedicated to the well, outline each and identify the ownership thereof (both as to working interest and royalty).
3. If more than one lease of different ownership is dedicated to the well, have the interests of all owners been consolidated by communitization, unitization, force-pooling, etc?

☐ Yes ☐ No If answer is "yes," type of consolidation _____

If answer is "no," list the owners and tract descriptions which have actually been consolidated. (Use reverse side of this form if necessary.) _____

No allowable will be assigned to the well until all interests have been consolidated (by communitization, unitization, forced-pooling, or otherwise) or until a non-standard unit, eliminating such interests, has been approved by the Commission.



CERTIFICATION

I hereby certify that the information contained herein is true and complete to the best of my knowledge and belief.

By *Jessica LaMarro*
Position Geologist
Company FAE II Operating, LLC
Date 1/21/2021

I hereby certify that the well location shown on this plat was plotted from field notes of actual surveys made by me or under my supervision, and that the same is true and correct to the best of my knowledge and belief.

Date Surveyed
SEPTEMBER 22ND, 1979

Registered Professional Engineer
and/or Land Surveyor

John W. West
Certificate No. **John W. West 676**
Ronald J. Eason 3239

District I
1625 N. French Dr., Hobbs, NM 88240
Phone:(575) 393-6161 Fax:(575) 393-0720
District II
811 S. First St., Artesia, NM 88210
Phone:(575) 748-1283 Fax:(575) 748-9720
District III
1000 Rio Brazos Rd., Aztec, NM 87410
Phone:(505) 334-6178 Fax:(505) 334-6170
District IV
1220 S. St Francis Dr., Santa Fe, NM 87505
Phone:(505) 476-3470 Fax:(505) 476-3462

State of New Mexico
Energy, Minerals and Natural Resources
Oil Conservation Division
1220 S. St Francis Dr.
Santa Fe, NM 87505

CONDITIONS

Action 15447

CONDITIONS OF APPROVAL

Operator:			OGRID:	Action Number:	Action Type:
FAE II OPERATING LLC 11757 Katy Freeway, Suite 1000 Houston, TX77079			329326	15447	APD
OCD Reviewer	Condition				
pkautz	Special Pool Rules - Special Vertical Limits Langlie Mattix pool from a 100 feet above top of Queen formation down to the base of the Grayburg formation				
pkautz	Must submit a GCP				