

<b>Well Name:</b> POKER LAKE UNIT 30 BS	<b>Well Location:</b> T25S / R31E / SEC 30 / SWNE / 32.102188 / -103.815377	<b>County or Parish/State:</b> EDDY / NM
<b>Well Number:</b> 125H	<b>Type of Well:</b> CONVENTIONAL GAS WELL	<b>Allottee or Tribe Name:</b>
<b>Lease Number:</b> NMLC0061634B, NMLC061634B	<b>Unit or CA Name:</b> POKER LAKE	<b>Unit or CA Number:</b> NMNM071016X, NMNM71016X
<b>US Well Number:</b> 3001546949	<b>Well Status:</b> Approved Application for Permit to Drill	<b>Operator:</b> XTO PERMIAN OPERATING LLC

Notice of Intent

**Type of Submission:** Notice of Intent

**Date Sundry Submitted:** 01/29/2021

**Date proposed operation will begin:** 01/30/2020

**Type of Action** APD Change

**Time Sundry Submitted:** 01:07

**Procedure Description:** XTO Permian Operating, LLC requests permission to make the following changes to the original APD: No Additional Surface Disturbance Change BHL fr/200'FSL & 2178'FEL to 150'FSL & 2022'FEL Casing/Cement design per the attached drilling program. XTO also requests the following variances: Approval to utilize a spudder rig to pre-set surface casing per the attached description of operations. Batch drill this well if necessary. In doing so, XTO will set each casing string and ensure that the well is cemented properly and the well is static. With floats holding, no pressure on the csg annulus, and the installation of a 10K TA cap as per recommendations, XTO will contact the BLM to skid the rig to drillt he remaining wells on the pad. Once surface and intermediate strings are all completed, XTO will begin drilling the production hole on each of the wells. ONLY test broken pressure seals on the BOP equipment per the attached procedure. A variance is requested to cement offline for the surface and intermediate casing strings. Attachments: C102 Drilling Program Directional Plan Multibowl Diagram 5MBOP/5MCM Spudder Rig Description of Operations BOP Break Test Procedure Offline Cementing Procedure

Application

## District I

1625 N. French Dr., Hobbs, NM 88240  
Phone: (575) 393-6161 Fax: (575) 393-0720

## District II

811 S. First St., Artesia, NM 88210  
Phone: (575) 748-1283 Fax: (575) 748-9720

## District III

1000 Rio Brazos Road, Aztec, NM 87410  
Phone: (505) 334-6178 Fax: (505) 334-6170

## District IV

1220 S. St. Francis Dr., Santa Fe, NM 87505  
Phone: (505) 476-3460 Fax: (505) 476-3462

State of New Mexico  
Energy, Minerals & Natural Resources Department  
OIL CONSERVATION DIVISION  
1220 South St. Francis Dr.  
Santa Fe, NM 87505

Form C-102

Revised August 1, 2011

Submit one copy to appropriate

District Office

☐ AMENDED REPORT

## WELL LOCATION AND ACREAGE DEDICATION PLAT

<sup>1</sup> API Number 30-015- 46969	<sup>2</sup> Pool Code 98220	<sup>3</sup> Pool Name Purple Sage; Wolfcamp (Gas0)
<sup>4</sup> Property Code 327328	<sup>5</sup> Property Name POKER LAKE UNIT 30 BS	<sup>6</sup> Well Number 125H
<sup>7</sup> OGRID No. 373075	<sup>8</sup> Operator Name XTO PERMIAN OPERATING, LLC.	<sup>9</sup> Elevation 3,366'

<sup>10</sup> Surface Location

UL or lot no.	Section	Township	Range	Lot Idn	Feet from the	North/South line	Feet from the	East/West line	County
G	30	25 S	31 E		2,310	NORTH	2,010	EAST	EDDY

<sup>11</sup> Bottom Hole Location If Different From Surface

UL or lot no.	Section	Township	Range	Lot Idn	Feet from the	North/South line	Feet from the	East/West line	County
O	6	26 S	31 E		150	SOUTH	2,022	EAST	EDDY

<sup>12</sup> Dedicated Acres 800	<sup>13</sup> Joint or Infill	<sup>14</sup> Consolidation Code	<sup>15</sup> Order No.
--------------------------------------	-------------------------------	----------------------------------	-------------------------

No allowable will be assigned to this completion until all interests have been consolidated or a non-standard unit has been approved by the division.

<p><sup>16</sup></p>	<p><b>SHL (NAD83 NME)</b> Y = 401,297.9 X = 701,720.6 LAT. = 32.102188 °N LONG. = 103.815376 °W</p> <p><b>LTP (NAD83 NME)</b> Y = 387,985.3 X = 701,750.7 LAT. = 32.065593 °N LONG. = 103.815486 °W</p> <p><b>FTP (NAD83 NME)</b> Y = 400,602.9 X = 701,706.2 LAT. = 32.100278 °N LONG. = 103.815434 °W</p> <p><b>BHL (NAD83 NME)</b> Y = 387,805.3 X = 701,751.8 LAT. = 32.065099 °N LONG. = 103.815485 °W</p> <p><b>CORNER COORDINATES (NAD83 NME)</b></p> <table border="0"> <tr><td>A - Y = 400,944.7 N</td><td>X = 701,070.7 E</td></tr> <tr><td>B - Y = 398,288.0 N</td><td>X = 701,058.4 E</td></tr> <tr><td>C - Y = 395,633.7 N</td><td>X = 701,071.1 E</td></tr> <tr><td>D - Y = 392,974.7 N</td><td>X = 701,083.8 E</td></tr> <tr><td>E - Y = 390,312.1 N</td><td>X = 701,099.4 E</td></tr> <tr><td>F - Y = 387,649.2 N</td><td>X = 701,115.0 E</td></tr> <tr><td>G - Y = 400,955.6 N</td><td>X = 702,400.1 E</td></tr> <tr><td>H - Y = 398,298.0 N</td><td>X = 702,389.1 E</td></tr> <tr><td>I - Y = 395,642.9 N</td><td>X = 702,401.5 E</td></tr> <tr><td>J - Y = 392,985.5 N</td><td>X = 702,412.9 E</td></tr> <tr><td>K - Y = 390,323.9 N</td><td>X = 702,428.8 E</td></tr> <tr><td>L - Y = 387,661.9 N</td><td>X = 702,444.8 E</td></tr> </table> <p><b>SHL (NAD27 NME)</b> Y = 401,240.0 X = 660,535.1 LAT. = 32.102064 °N LONG. = 103.814897 °W</p> <p><b>LTP (NAD27 NME)</b> Y = 387,927.7 X = 660,564.6 LAT. = 32.065469 °N LONG. = 103.815008 °W</p> <p><b>FTP (NAD27 NME)</b> Y = 400,545.0 X = 660,520.6 LAT. = 32.100153 °N LONG. = 103.814955 °W</p> <p><b>BHL (NAD27 NME)</b> Y = 387,747.7 X = 660,565.8 LAT. = 32.064974 °N LONG. = 103.815008 °W</p> <p><b>CORNER COORDINATES (NAD27 NME)</b></p> <table border="0"> <tr><td>A - Y = 400,886.7 N</td><td>X = 659,885.1 E</td></tr> <tr><td>B - Y = 398,230.1 N</td><td>X = 659,872.7 E</td></tr> <tr><td>C - Y = 395,575.9 N</td><td>X = 659,885.3 E</td></tr> <tr><td>D - Y = 392,917.0 N</td><td>X = 659,897.9 E</td></tr> <tr><td>E - Y = 390,254.4 N</td><td>X = 659,913.5 E</td></tr> <tr><td>F - Y = 387,591.6 N</td><td>X = 659,929.0 E</td></tr> <tr><td>G - Y = 400,897.7 N</td><td>X = 661,214.5 E</td></tr> <tr><td>H - Y = 398,240.1 N</td><td>X = 661,203.4 E</td></tr> <tr><td>I - Y = 395,585.1 N</td><td>X = 661,215.8 E</td></tr> <tr><td>J - Y = 392,927.8 N</td><td>X = 661,227.0 E</td></tr> <tr><td>K - Y = 390,266.3 N</td><td>X = 661,242.8 E</td></tr> <tr><td>L - Y = 387,604.3 N</td><td>X = 661,258.8 E</td></tr> </table>	A - Y = 400,944.7 N	X = 701,070.7 E	B - Y = 398,288.0 N	X = 701,058.4 E	C - Y = 395,633.7 N	X = 701,071.1 E	D - Y = 392,974.7 N	X = 701,083.8 E	E - Y = 390,312.1 N	X = 701,099.4 E	F - Y = 387,649.2 N	X = 701,115.0 E	G - Y = 400,955.6 N	X = 702,400.1 E	H - Y = 398,298.0 N	X = 702,389.1 E	I - Y = 395,642.9 N	X = 702,401.5 E	J - Y = 392,985.5 N	X = 702,412.9 E	K - Y = 390,323.9 N	X = 702,428.8 E	L - Y = 387,661.9 N	X = 702,444.8 E	A - Y = 400,886.7 N	X = 659,885.1 E	B - Y = 398,230.1 N	X = 659,872.7 E	C - Y = 395,575.9 N	X = 659,885.3 E	D - Y = 392,917.0 N	X = 659,897.9 E	E - Y = 390,254.4 N	X = 659,913.5 E	F - Y = 387,591.6 N	X = 659,929.0 E	G - Y = 400,897.7 N	X = 661,214.5 E	H - Y = 398,240.1 N	X = 661,203.4 E	I - Y = 395,585.1 N	X = 661,215.8 E	J - Y = 392,927.8 N	X = 661,227.0 E	K - Y = 390,266.3 N	X = 661,242.8 E	L - Y = 387,604.3 N	X = 661,258.8 E	<p><b><sup>17</sup> OPERATOR CERTIFICATION</b></p> <p>I hereby certify that the information contained herein is true and complete to the best of my knowledge and belief, and that this organization either owns a working interest or unleased mineral interest in the land including the proposed bottom hole location or has a right to drill this well at this location pursuant to a contract with an owner of such a mineral or working interest, or to a voluntary pooling agreement or a compulsory pooling order heretofore entered by the division.</p> <p><u>Stephanie Rabadue</u> 01/15/2021 Signature Date</p> <p>Stephanie Rabadue Printed Name</p> <p>stephanie.rabadue@exxonmobil.com E-mail Address</p> <p><b><sup>18</sup> SURVEYOR CERTIFICATION</b></p> <p>I hereby certify that the well location shown on this plat was plotted from field notes of actual surveys made by me or under my supervision, and that the same is true and correct to the best of my belief.</p> <p>1-7-2021 Date of Survey</p> <p>Signature and Seal of Professional Surveyor:</p> <p>MARK DILLON HARP 23786 Certificate Number LM 2017071037</p>
	A - Y = 400,944.7 N	X = 701,070.7 E																																																
	B - Y = 398,288.0 N	X = 701,058.4 E																																																
C - Y = 395,633.7 N	X = 701,071.1 E																																																	
D - Y = 392,974.7 N	X = 701,083.8 E																																																	
E - Y = 390,312.1 N	X = 701,099.4 E																																																	
F - Y = 387,649.2 N	X = 701,115.0 E																																																	
G - Y = 400,955.6 N	X = 702,400.1 E																																																	
H - Y = 398,298.0 N	X = 702,389.1 E																																																	
I - Y = 395,642.9 N	X = 702,401.5 E																																																	
J - Y = 392,985.5 N	X = 702,412.9 E																																																	
K - Y = 390,323.9 N	X = 702,428.8 E																																																	
L - Y = 387,661.9 N	X = 702,444.8 E																																																	
A - Y = 400,886.7 N	X = 659,885.1 E																																																	
B - Y = 398,230.1 N	X = 659,872.7 E																																																	
C - Y = 395,575.9 N	X = 659,885.3 E																																																	
D - Y = 392,917.0 N	X = 659,897.9 E																																																	
E - Y = 390,254.4 N	X = 659,913.5 E																																																	
F - Y = 387,591.6 N	X = 659,929.0 E																																																	
G - Y = 400,897.7 N	X = 661,214.5 E																																																	
H - Y = 398,240.1 N	X = 661,203.4 E																																																	
I - Y = 395,585.1 N	X = 661,215.8 E																																																	
J - Y = 392,927.8 N	X = 661,227.0 E																																																	
K - Y = 390,266.3 N	X = 661,242.8 E																																																	
L - Y = 387,604.3 N	X = 661,258.8 E																																																	

Intent ☐ As Drilled ☐

API #		
Operator Name:	Property Name:	Well Number

## Kick Off Point (KOP)

UL	Section	Township	Range	Lot	Feet	From N/S	Feet	From E/W	County
Latitude					Longitude				NAD

## First Take Point (FTP)

UL	Section	Township	Range	Lot	Feet	From N/S	Feet	From E/W	County
Latitude					Longitude				NAD

## Last Take Point (LTP)

UL	Section	Township	Range	Lot	Feet	From N/S	Feet	From E/W	County
Latitude					Longitude				NAD

Is this well the defining well for the Horizontal Spacing Unit? ☐Is this well an infill well? ☐

If infill is yes please provide API if available, Operator Name and well number for Defining well for Horizontal Spacing Unit.

API #		
Operator Name:	Property Name:	Well Number

KZ 06/29/2018

**DRILLING PLAN: BLM COMPLIANCE**  
(Supplement to BLM 3160-3)

XTO Energy Inc.  
Poker Lake Unit 30 BS 125H  
Projected TD: 25001' MD / 11870' TVD  
SHL: 2310' FNL & 2010' FEL , Section 30, T25S, R31E  
BHL: 150' FSL & 2022' FEL , Section 6, T26S, R31E  
Eddy County, NM

**1. Geologic Name of Surface Formation**

A. Permian

**2. Estimated Tops of Geological Markers & Depths of Anticipated Fresh Water, Oil or Gas**

Formation	Well Depth (TVD)	Water/Oil/Gas
Rustler	942'	Water
Salado	1305'	Water
Delaware	4317'	Water
Brushy Canyon	6920'	Water/Oil/Gas
Bone Spring	8200'	Water
1st Bone Spring Ss	9200'	Water/Oil/Gas
2nd Bone Spring Ss	9777'	Water/Oil/Gas
3rd Bone Spring Ss	11190'	Water/Oil/Gas
Wolfcamp	11560'	Water/Oil/Gas
Wolfcamp X	11590'	Water/Oil/Gas
Wolfcamp A	11710'	Water/Oil/Gas
Target/Land Curve	11870'	Water/Oil/Gas

\*\*\* Hydrocarbons @ Brushy Canyon

\*\*\* Groundwater depth 40' (per NM State Engineers Office).

No other formations are expected to yield oil, gas or fresh water in measurable volumes. The surface fresh water sands will be protected by setting 11-3/4" casing @ 1255' (50' above the salt) and circulating cement back to surface. The 7-5/8" intermediate casing will be set at 11152' and bring TOC back to surface. A 6-3/4 inch curve and lateral hole will be drilled to MD/TD and 5-1/2" x 5-1/2" casing will be set at TD and cemented back 300' into the 7-5/8" casing shoe.

**3. Casing Design**

Hole Size	Depth	OD Csg	Weight	Collar	Grade	New/Used	SF Burst	SF Collapse	SF Tension
14-3/4"	0' – 1255'	11-3/4"	54	BTC	J-55	New	1.24	3.65	12.54
8-3/4"	0' – 4000'	7-5/8"	29.7	Liberty FJ	CYP-110	New	2.17	2.80	1.68
8-3/4"	4000' – 11152'	7-5/8"	29.7	Liberty FJ	HCL-80	New	1.58	1.97	1.91
6-3/4"	0' – 11052'	5-1/2"	23	Semi-Premium	P-110	New	1.21	2.24	1.90
6-3/4"	11052' - 25001'	5-1/2"	23	Semi-Flush	P-110	New	1.21	2.08	4.68

· XTO requests to not utilize centralizers in the curve and lateral

· 7-5/8" Collapse analyzed using 50% evacuation based on regional experience

· 5-1/2" Tension calculated using vertical hanging weight plus the lateral weight multiplied by a friction factor of 0.35

· Test on Casing will be limited to 70% burst of the casing or 1500 psi, whichever is less

· Request to use 5" BTC Float equipment for the the production casing

**Wellhead:**

Permanent Wellhead – Multibowl System

A. Starting Head: 13-5/8" 10M top flange x 11-3/4" SOW bottom

B. Tubing Head: 13-5/8" 10M bottom flange x 7-1/16" 15M top flange

· Wellhead will be installed by manufacturer's representatives.

· Manufacturer will monitor welding process to ensure appropriate temperature of seal.

- Operator will test the 7-5/8" casing per BLM Onshore Order 2
- Wellhead Manufacturer representative will not be present for BOP test plug installation

#### 4. Cement Program

##### **Surface Casing: 11-3/4", 54 New J-55, BTC casing to be set at +/- 1255'**

Lead: 440 sxs Halcem-C + 2% CaCl (mixed at 12.8 ppg, 1.87 ft3/sx, 10.13 gal/sx water)

Tail: 190 sxs Halcem-C + 2% CaCl (mixed at 14.8 ppg, 1.35 ft3/sx, 6.39 gal/sx water)

Compressives:           12-hr =           900 psi           24 hr = 1500 psi  
TOC: Surface

##### **Intermediate Casing: 7-5/8", 29.7 New casing to be set at +/- 11152**

###### 1st Stage

Optional Lead: 370 sxs NeoCem (mixed at 10.5 ppg, 2.77 ft3/sx, 15.59 gal/sx water)

TOC: Surface

Tail: 390 sxs Halcem - Class C (mixed at 14.8 ppg, 1.35 ft3/sx, 6.39 gal/sx water)

Compressives:           12-hr =           900 psi           24 hr = 1150psi  
TOC: Brushy Canyon (6920')

###### 2nd Stage

Tail: 650 sxs Halcem-Class C (mixed at 14.8 ppg, 1.33 ft3/sx, 5.29 gal/sx water)

Compressives:           12-hr =           900 psi           24 hr = 1150 psi  
TOC: Surface

XTO requests to pump a two stage cement job on the 7-5/8" intermediate casing string with the first stage being pumped conventionally with the calculated top of cement at the Brush Canyon (6920') and the second stage performed as a bradenhead squeeze with planned cement from the Brushy Canyon to surface. If cement is not visually confirmed to circulate to surface, the final cement top after the second stage job will be verified by Echo-meter. If necessary, a top out consisting of 1,500 sack of Class C cement + 3% Salt + 1% PreMag-M + 6% Bentonite Gel (2.30 yld, 12.91 ppg) will be executed as a contingency. If cement is still unable to circulate to surface, another Echo-meter run will be performed for cement top verification.

XTO will include the Echo-meter verified fluid top and the volume of displacement fluid above the cement slurry in the annulus in all post-drill sundries on wells utilizing this cement program.

XTO will report to the BLM the volume of fluid (limited to 5 bbls) used to flush intermediate casing valves following backside cementing procedures.

XTO requests to pump an Optional Lead if well conditions dictate in an attempt to bring cement to surface on the first stage. If cement is brought to surface, the BLM will be notified and the second stage bradenhead squeeze and subsequent TOC verification will be negated.

In the event cement is not circulated to surface on the first stage, whether intentionally or unintentionally, XTO requests the option to conduct the bradenhead squeeze and TOC verification offline as per standard approval from BLM when unplanned remediation is needed and batch drilling is approved. In the event the bradenhead is conducted, we will ensure first stage cement job is cemented properly and the well is static with floats holding and no pressure on the csg annulus as with all other casing strings where batch drilling operations occur before moving off the rig. The TA cap will also be installed per GE

##### **Production Casing: 5-1/2", 23 x 5-1/2", 23 New casing to be set at +/- 25001'**

Lead: 20 sxs VersaCem (mixed at 11.5 ppg, 2.69 ft3/sx, 15.00 gal/sx water)

Tail: 980 sxs VersaCem (mixed at 13.2 ppg, 1.51 ft3/sx, 7.20 gal/sx water)

Compressives           12-hr =           800 psi           24 hr = 1500 psi  
TOC: 300' inside previous shoe

#### 5. Pressure Control Equipment

Once the permanent WH is installed on the 11-3/4" casing, the blow out preventer equipment (BOP) will consist of a 13-5/8" minimum 5M Hydril and a 13-5/8" minimum 5M 3-Ram BOP. MASP should not exceed 4363 psi. In any instance where 10M BOP is required by BLM, XTO requests a variance to utilize 5M annular with 10M ram preventers (a common BOP

All BOP testing will be done by an independent service company. Annular pressure tests will be limited to 70% of the working pressure. When nipping up on the 11-3/4", 5M bradenhead and flange, the BOP test will be limited to 5000 psi. All BOP tests will include a low pressure test as per BLM regulations. The 5M BOP diagrams are attached. Blind rams will be functioned tested each trip, pipe rams will be functioned tested each day.

A variance is requested to allow use of a flex hose as the choke line from the BOP to the Choke Manifold. If this hose is used, a copy of the manufacturer's certification and pressure test chart will be kept on the rig. Attached is an example of a certification and pressure test chart. The manufacturer does not require anchors.

XTO requests a variance to be able to batch drill this well if necessary. In doing so, XTO will set each casing string and ensure that the well is cemented properly and the well is static. With floats holding, no pressure on the csg annulus, and the installation of a 10K TA cap as per GE recommendations, XTO will contact the BLM on each rig skid on the pad. Once surface and intermediate strings are all completed, XTO will begin drilling the production hole on each of the wells.

A variance is requested to **ONLY** test broken pressure seals on the BOP equipment when moving from wellhead to wellhead which is in compliance with API Standard 53. API standard 53 states, that for pad drilling operation, moving from one wellhead to another within 21 days, pressure testing is required for pressure-containing and pressure-controlling connections when the integrity of a pressure seal is broken. Based on discussions with the BLM on February 27th 2020, we will request permission to **ONLY** retest broken pressure seals if the following conditions are met: 1. After a full BOP test is conducted on the first well on the pad (First well will be the deepest Intermediate) 2. When skidding to drill an intermediate section does not penetrate into the Wolfcamp 3. Full BOP test will be required prior to drilling the production hole.

A variance is requested to cement offline for the surface and intermediate casing strings according to attached offline cementing supporting documentation.

## 6. Proposed Mud Circulation System

INTERVAL	Hole Size	Mud Type	MW (ppg)	Viscosity (sec/qt)	Fluid Loss (cc)
0' - 1255'	14-3/4"	FW / Native	8.4-8.8	35-40	NC
1255' - 11152'	8-3/4"	Brine / Cut Brine /	8.5-9.7	30-32	NC
11152' to 25001'	6-3/4"	Cut Brine / WBM / OBM	10.8-11.8	32-36	NC

The necessary mud products for weight addition and fluid loss control will be on location at all times. Spud with fresh water/native mud and set 11-3/4" surface casing, isolating the fresh water aquifer. Drill out from under 11-3/4" surface casing with a brine/oil direct emulsion mud system. Use fibrous materials as needed to control seepage and lost circulation. Pump viscous sweeps as needed for hole cleaning. Pump speed will be recorded on a daily drilling report after mudding up. A Pason or Totco will be used to detect changes in loss or gain of mud volume. A mud test will be performed every 24 hours to determine: density, viscosity, strength, filtration and pH as necessary. Use available solids controls equipment to help keep mud weight down after mud up. Rig up solids control equipment to operate as a closed loop system.

## 7. Auxiliary Well Control and Monitoring Equipment

- A. A Kelly cock will be in the drill string at all times.
- B. A full opening drill pipe stabbing valve having appropriate connections will be on the rig floor at all times.
- C. H2S monitors will be on location when drilling below the 11-3/4" casing.

## 8. Logging, Coring and Testing Program

Mud Logger: Mud Logging Unit (2 man) below intermediate casing.

Open hole logging will not be done on this well.

## 9. Abnormal Pressures and Temperatures / Potential Hazards

None Anticipated. BHT of 165 to 185 F is anticipated. No H2S is expected but monitors will be in place to detect any H2S occurrences. Should these circumstances be encountered the operator and drilling contractor are prepared to take all necessary steps to ensure safety of all personnel and environment. Lost circulation could occur but is not expected to be a serious problem in this area and hole seepage will be compensated for by additions of small amounts of LCM in the drilling fluid. The maximum anticipated bottom hole pressure for this well is 6975 psi.

**10. Anticipated Starting Date and Duration of Operations**

Road and location construction will begin after Santa Fe and BLM have approved the APD. Anticipated spud date will be as soon after Santa Fe and BLM approval and as soon as a rig will be available. Move in operations and drilling is expected to



## **XTO Energy**

**Eddy County, NM (NAD-27)**

**PLU 30 Big Sinks**

**#125H**

**OH**

**Plan: PERMIT-v3**

## **Standard Planning Report**

**17 January, 2021**



Project: Eddy County, NM (NAD-27)  
Site: PLU 30 Big Sinks  
Well: #125H  
Wellbore: OH  
Design: PERMIT-v3

PROJECT DETAILS: Eddy County, NM (NAD-27)  
Geodetic System: US State Plane 1927 (Exact solution)  
Datum: NAD 1927 (NADCON CONUS)  
Ellipsoid: Clarke 1866  
Zone: New Mexico East 3001  
System Datum: Mean Sea Level

WELL DETAILS: #125H

Rig Name:		RKB = 30' @ 3396.00usft		Ground Level: 3366.00	
+N/-S	+E/-W	Northing	Easting	Latitude	Longitude
0.00	0.00	401240.00	660535.10	32.1020638	-103.8148973

DESIGN TARGET DETAILS

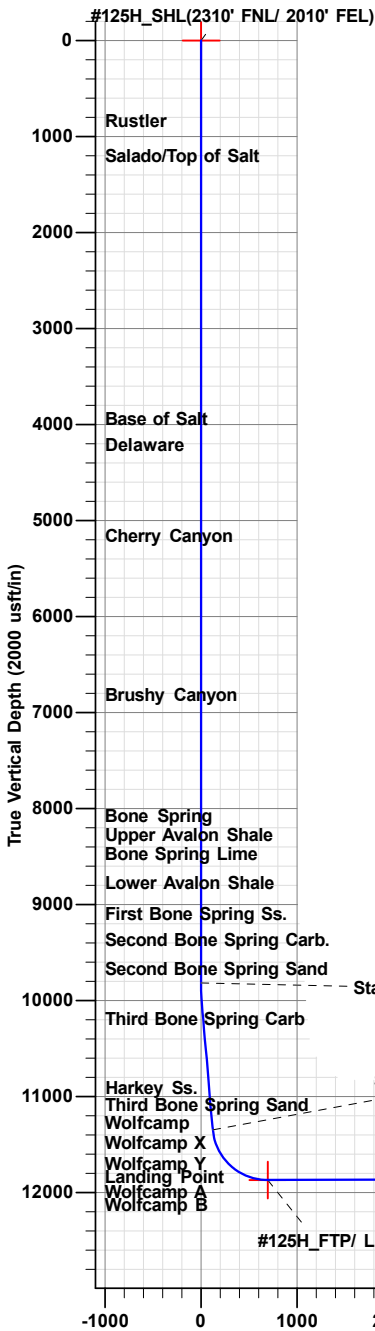
Name	TVD	+N/-S	+E/-W	Northing	Easting	Latitude	Longitude	Shape
#125H_SHL(2310' FNL/ 2010' FEL)	0.00	0.00	0.00	401240.00	660535.10	32.1020638	-103.8148973	Point
#125H_PBHL (150' FSL/ 2022' FEL)	11830.00	-13492.30	30.70	387747.70	660565.80	32.0649738	-103.8150075	Point
#125H_LTP	11830.56	-13312.30	29.50	387927.70	660564.60	32.0654686	-103.8150086	Point
#125H_FTP/ LP	11870.00	-695.00	-14.50	400545.00	660520.60	32.1001535	-103.8149549	Point

SECTION DETAILS

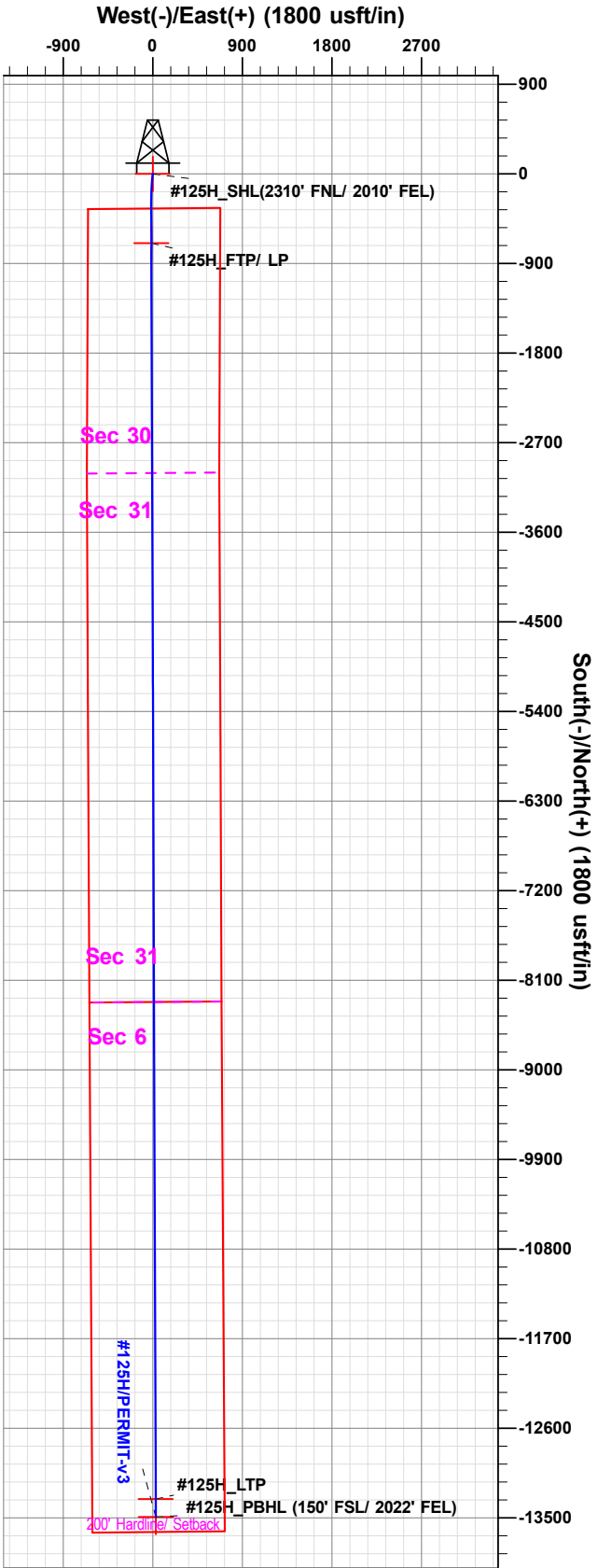
Sec	MD	Inc	Azi	TVD	+N/-S	+E/-W	Dleg	TFace	VSect
1	0.00	0.00	0.00	0.00	0.00	0.00	0.00	0.00	0.00
2	9817.00	0.00	0.00	9817.00	0.00	0.00	0.00	0.00	0.00
3	10067.18	5.00	185.56	10066.87	-10.87	-1.06	2.00	185.56	10.86
4	11352.00	5.00	185.56	11346.79	-122.40	-11.91	0.00	0.00	122.36
5	12204.01	90.18	179.80	11870.00	-695.00	-14.50	10.00	-5.78	694.95
6	24821.45	90.18	179.80	11830.56	-13312.30	30.06	0.00	0.00	13312.32
7	25001.45	90.18	179.80	11830.00	-13492.30	30.70	0.00	0.00	13492.32

FORMATION TOP DETAILS

TVDPath	Formation
942.00	Rustler
1305.00	Salado/Top of Salt
4040.00	Base of Salt
4317.00	Delaware
5266.00	Cherry Canyon
6920.00	Brushy Canyon
8200.00	Bone Spring
8380.00	Upper Avalon Shale
8460.00	Bone Spring Lime
8880.00	Lower Avalon Shale
9200.00	First Bone Spring Ss.
9474.00	Second Bone Spring Carb.
9777.00	Second Bone Spring Sand
10293.00	Third Bone Spring Carb
11184.00	Harkey Ss.
11190.00	Third Bone Spring Sand
11560.00	Wolfcamp
11590.00	Wolfcamp X
11700.00	Wolfcamp Y
11710.00	Wolfcamp A
11830.00	TD
11870.00	Landing Point



Vertical Section at 179.80° (2000 usft/in)



## District I

1625 N. French Dr., Hobbs, NM 88240  
Phone: (575) 393-6161 Fax: (575) 393-0720

## District II

811 S. First St., Artesia, NM 88210  
Phone: (575) 748-1283 Fax: (575) 748-9720

## District III

1000 Rio Brazos Road, Aztec, NM 87410  
Phone: (505) 334-6178 Fax: (505) 334-6170

## District IV

1220 S. St. Francis Dr., Santa Fe, NM 87505  
Phone: (505) 476-3460 Fax: (505) 476-3462

State of New Mexico  
Energy, Minerals & Natural Resources Department  
OIL CONSERVATION DIVISION  
1220 South St. Francis Dr.  
Santa Fe, NM 87505

Form C-102

Revised August 1, 2011

Submit one copy to appropriate

District Office

☐ AMENDED REPORT

## WELL LOCATION AND ACREAGE DEDICATION PLAT

<sup>1</sup> API Number 30-015-	<sup>2</sup> Pool Code	<sup>3</sup> Pool Name
<sup>4</sup> Property Code	<sup>5</sup> Property Name POKER LAKE UNIT 30 BS	<sup>6</sup> Well Number 125H
<sup>7</sup> OGRID No. 373075	<sup>8</sup> Operator Name XTO PERMIAN OPERATING, LLC.	<sup>9</sup> Elevation 3,366'

<sup>10</sup> Surface Location


UL or lot no.	Section	Township	Range	Lot Idn	Feet from the	North/South line	Feet from the	East/West line	County
G	30	25 S	31 E		2,310	NORTH	2,010	EAST	EDDY

<sup>11</sup> Bottom Hole Location If Different From Surface

UL or lot no.	Section	Township	Range	Lot Idn	Feet from the	North/South line	Feet from the	East/West line	County
O	6	26 S	31 E		150	SOUTH	2,022	EAST	EDDY

<sup>12</sup> Dedicated Acres	<sup>13</sup> Joint or Infill	<sup>14</sup> Consolidation Code	<sup>15</sup> Order No.

No allowable will be assigned to this completion until all interests have been consolidated or a non-standard unit has been approved by the division.

<p><sup>16</sup></p>	<p><b>SHL (NAD83 NME)</b> Y = 401,297.9 X = 701,720.6 LAT. = 32.102188 °N LONG. = 103.815376 °W</p> <p><b>LTP (NAD83 NME)</b> Y = 387,985.3 X = 701,750.7 LAT. = 32.065593 °N LONG. = 103.815486 °W</p> <p><b>FTP (NAD83 NME)</b> Y = 400,602.9 X = 701,706.2 LAT. = 32.100278 °N LONG. = 103.815434 °W</p> <p><b>BHL (NAD83 NME)</b> Y = 387,805.3 X = 701,751.8 LAT. = 32.065099 °N LONG. = 103.815485 °W</p> <p><b>CORNER COORDINATES (NAD83 NME)</b></p> <table> <tr><td>A - Y = 400,944.7 N</td><td>X = 701,070.7 E</td></tr> <tr><td>B - Y = 398,288.0 N</td><td>X = 701,058.4 E</td></tr> <tr><td>C - Y = 395,633.7 N</td><td>X = 701,071.1 E</td></tr> <tr><td>D - Y = 392,974.7 N</td><td>X = 701,083.8 E</td></tr> <tr><td>E - Y = 390,312.1 N</td><td>X = 701,099.4 E</td></tr> <tr><td>F - Y = 387,649.2 N</td><td>X = 701,115.0 E</td></tr> <tr><td>G - Y = 400,955.6 N</td><td>X = 702,400.1 E</td></tr> <tr><td>H - Y = 398,298.0 N</td><td>X = 702,389.1 E</td></tr> <tr><td>I - Y = 395,642.9 N</td><td>X = 702,401.5 E</td></tr> <tr><td>J - Y = 392,985.5 N</td><td>X = 702,412.9 E</td></tr> <tr><td>K - Y = 390,323.9 N</td><td>X = 702,428.8 E</td></tr> <tr><td>L - Y = 387,661.9 N</td><td>X = 702,444.8 E</td></tr> </table> <p><b>SHL (NAD27 NME)</b> Y = 401,240.0 X = 660,535.1 LAT. = 32.102064 °N LONG. = 103.814897 °W</p> <p><b>LTP (NAD27 NME)</b> Y = 387,927.7 X = 660,564.6 LAT. = 32.065469 °N LONG. = 103.815008 °W</p> <p><b>FTP (NAD27 NME)</b> Y = 400,545.0 X = 660,520.6 LAT. = 32.100153 °N LONG. = 103.814955 °W</p> <p><b>BHL (NAD27 NME)</b> Y = 387,747.7 X = 660,565.8 LAT. = 32.064974 °N LONG. = 103.815008 °W</p> <p><b>CORNER COORDINATES (NAD27 NME)</b></p> <table> <tr><td>A - Y = 400,886.7 N</td><td>X = 659,885.1 E</td></tr> <tr><td>B - Y = 398,230.1 N</td><td>X = 659,872.7 E</td></tr> <tr><td>C - Y = 395,575.9 N</td><td>X = 659,885.3 E</td></tr> <tr><td>D - Y = 392,917.0 N</td><td>X = 659,897.9 E</td></tr> <tr><td>E - Y = 390,254.4 N</td><td>X = 659,913.5 E</td></tr> <tr><td>F - Y = 387,591.6 N</td><td>X = 659,929.0 E</td></tr> <tr><td>G - Y = 400,897.7 N</td><td>X = 661,214.5 E</td></tr> <tr><td>H - Y = 398,240.1 N</td><td>X = 661,203.4 E</td></tr> <tr><td>I - Y = 395,585.1 N</td><td>X = 661,215.8 E</td></tr> <tr><td>J - Y = 392,927.8 N</td><td>X = 661,227.0 E</td></tr> <tr><td>K - Y = 390,266.3 N</td><td>X = 661,242.8 E</td></tr> <tr><td>L - Y = 387,604.3 N</td><td>X = 661,258.8 E</td></tr> </table>	A - Y = 400,944.7 N	X = 701,070.7 E	B - Y = 398,288.0 N	X = 701,058.4 E	C - Y = 395,633.7 N	X = 701,071.1 E	D - Y = 392,974.7 N	X = 701,083.8 E	E - Y = 390,312.1 N	X = 701,099.4 E	F - Y = 387,649.2 N	X = 701,115.0 E	G - Y = 400,955.6 N	X = 702,400.1 E	H - Y = 398,298.0 N	X = 702,389.1 E	I - Y = 395,642.9 N	X = 702,401.5 E	J - Y = 392,985.5 N	X = 702,412.9 E	K - Y = 390,323.9 N	X = 702,428.8 E	L - Y = 387,661.9 N	X = 702,444.8 E	A - Y = 400,886.7 N	X = 659,885.1 E	B - Y = 398,230.1 N	X = 659,872.7 E	C - Y = 395,575.9 N	X = 659,885.3 E	D - Y = 392,917.0 N	X = 659,897.9 E	E - Y = 390,254.4 N	X = 659,913.5 E	F - Y = 387,591.6 N	X = 659,929.0 E	G - Y = 400,897.7 N	X = 661,214.5 E	H - Y = 398,240.1 N	X = 661,203.4 E	I - Y = 395,585.1 N	X = 661,215.8 E	J - Y = 392,927.8 N	X = 661,227.0 E	K - Y = 390,266.3 N	X = 661,242.8 E	L - Y = 387,604.3 N	X = 661,258.8 E	<p><b><sup>17</sup> OPERATOR CERTIFICATION</b></p> <p>I hereby certify that the information contained herein is true and complete to the best of my knowledge and belief, and that this organization either owns a working interest or unleased mineral interest in the land including the proposed bottom hole location or has a right to drill this well at this location pursuant to a contract with an owner of such a mineral or working interest, or to a voluntary pooling agreement or a compulsory pooling order heretofore entered by the division.</p> <p>Signature _____ Date _____</p> <p>Printed Name _____</p> <p>E-mail Address _____</p> <p><b><sup>18</sup> SURVEYOR CERTIFICATION</b></p> <p>I hereby certify that the well location shown on this plat was plotted from field notes of actual surveys made by me or under my supervision, and that the same is true and correct to the best of my belief.</p> <p>1-7-2021 Date of Survey</p> <p>Signature and Seal of Professional Surveyor: </p> <p>MARK DILLON HARP 23786 Certificate Number LM 2017071037</p>
A - Y = 400,944.7 N	X = 701,070.7 E																																																	
B - Y = 398,288.0 N	X = 701,058.4 E																																																	
C - Y = 395,633.7 N	X = 701,071.1 E																																																	
D - Y = 392,974.7 N	X = 701,083.8 E																																																	
E - Y = 390,312.1 N	X = 701,099.4 E																																																	
F - Y = 387,649.2 N	X = 701,115.0 E																																																	
G - Y = 400,955.6 N	X = 702,400.1 E																																																	
H - Y = 398,298.0 N	X = 702,389.1 E																																																	
I - Y = 395,642.9 N	X = 702,401.5 E																																																	
J - Y = 392,985.5 N	X = 702,412.9 E																																																	
K - Y = 390,323.9 N	X = 702,428.8 E																																																	
L - Y = 387,661.9 N	X = 702,444.8 E																																																	
A - Y = 400,886.7 N	X = 659,885.1 E																																																	
B - Y = 398,230.1 N	X = 659,872.7 E																																																	
C - Y = 395,575.9 N	X = 659,885.3 E																																																	
D - Y = 392,917.0 N	X = 659,897.9 E																																																	
E - Y = 390,254.4 N	X = 659,913.5 E																																																	
F - Y = 387,591.6 N	X = 659,929.0 E																																																	
G - Y = 400,897.7 N	X = 661,214.5 E																																																	
H - Y = 398,240.1 N	X = 661,203.4 E																																																	
I - Y = 395,585.1 N	X = 661,215.8 E																																																	
J - Y = 392,927.8 N	X = 661,227.0 E																																																	
K - Y = 390,266.3 N	X = 661,242.8 E																																																	
L - Y = 387,604.3 N	X = 661,258.8 E																																																	



## Planning Report

<b>Database:</b>	EDM 5000.1.13 Single User Db	<b>Local Co-ordinate Reference:</b>	Well #125H
<b>Company:</b>	XTO Energy	<b>TVD Reference:</b>	RKB = 30' @ 3396.00usft
<b>Project:</b>	Eddy County, NM (NAD-27)	<b>MD Reference:</b>	RKB = 30' @ 3396.00usft
<b>Site:</b>	PLU 30 Big Sinks	<b>North Reference:</b>	Grid
<b>Well:</b>	#125H	<b>Survey Calculation Method:</b>	Minimum Curvature
<b>Wellbore:</b>	OH		
<b>Design:</b>	PERMIT-v3		

<b>Project</b>	Eddy County, NM (NAD-27)		
<b>Map System:</b>	US State Plane 1927 (Exact solution)	<b>System Datum:</b>	Mean Sea Level
<b>Geo Datum:</b>	NAD 1927 (NADCON CONUS)		
<b>Map Zone:</b>	New Mexico East 3001		

Site		PLU 30 Big Sinks			
Site Position:		Northing:	401,221.20 usft	Latitude:	32.1020486
From:	Map	Easting:	657,754.30 usft	Longitude:	-103.8238776
Position Uncertainty:	0.00 usft	Slot Radius:	13-3/16 "	Grid Convergence:	0.27 °

Well	#125H					
Well Position	+N/-S	18.80 usft	Northing:	401,240.00 usft	Latitude:	32.1020638
	+E/-W	2,780.80 usft	Easting:	660,535.10 usft	Longitude:	-103.8148973
Position Uncertainty		0.00 usft	Wellhead Elevation:	0.00 usft	Ground Level:	3,366.00 usft

<b>Wellbore</b>	OH				
<b>Magnetics</b>	<b>Model Name</b>	<b>Sample Date</b>	<b>Declination (°)</b>	<b>Dip Angle (°)</b>	<b>Field Strength (nT)</b>
	IGRF2020	02/11/21	6.69	59.76	47,432

<b>Design</b>	PERMIT-v3				
<b>Audit Notes:</b>					
<b>Version:</b>	<b>Phase:</b>	PLAN	<b>Tie On Depth:</b>	0.00	
<b>Vertical Section:</b>	<b>Depth From (TVD) (usft)</b>	<b>+N/-S (usft)</b>	<b>+E/-W (usft)</b>	<b>Direction (°)</b>	
	0.00	0.00	0.00	179.80	

Plan Sections										
Measured Depth (usft)	Inclination (°)	Azimuth (°)	Vertical Depth (usft)	+N/-S (usft)	+E/-W (usft)	Dogleg Rate (°/100usft)	Build Rate (°/100usft)	Turn Rate (°/100usft)	TFO (°)	Target
0.00	0.00	0.00	0.00	0.00	0.00	0.00	0.00	0.00	0.00	
9,817.00	0.00	0.00	9,817.00	0.00	0.00	0.00	0.00	0.00	0.00	
10,067.18	5.00	185.56	10,066.87	-10.87	-1.06	2.00	2.00	0.00	185.56	
11,352.00	5.00	185.56	11,346.79	-122.40	-11.91	0.00	0.00	0.00	0.00	
12,204.01	90.18	179.80	11,870.00	-695.00	-14.50	10.00	10.00	-0.68	-5.78	#125H_FTP/ LP
24,821.45	90.18	179.80	11,830.56	-13,312.30	30.06	0.00	0.00	0.00	0.00	#125H_LTP
25,001.45	90.18	179.80	11,830.00	-13,492.30	30.70	0.00	0.00	0.00	0.00	#125H_PBHL (150'



## Planning Report

<b>Database:</b>	EDM 5000.1.13 Single User Db	<b>Local Co-ordinate Reference:</b>	Well #125H
<b>Company:</b>	XTO Energy	<b>TVD Reference:</b>	RKB = 30' @ 3396.00usft
<b>Project:</b>	Eddy County, NM (NAD-27)	<b>MD Reference:</b>	RKB = 30' @ 3396.00usft
<b>Site:</b>	PLU 30 Big Sinks	<b>North Reference:</b>	Grid
<b>Well:</b>	#125H	<b>Survey Calculation Method:</b>	Minimum Curvature
<b>Wellbore:</b>	OH		
<b>Design:</b>	PERMIT-v3		

Planned Survey									
Measured Depth (usft)	Inclination (°)	Azimuth (°)	Vertical Depth (usft)	+N/-S (usft)	+E/-W (usft)	Vertical Section (usft)	Dogleg Rate (°/100usft)	Build Rate (°/100usft)	Turn Rate (°/100usft)
0.00	0.00	0.00	0.00	0.00	0.00	0.00	0.00	0.00	0.00
100.00	0.00	0.00	100.00	0.00	0.00	0.00	0.00	0.00	0.00
200.00	0.00	0.00	200.00	0.00	0.00	0.00	0.00	0.00	0.00
300.00	0.00	0.00	300.00	0.00	0.00	0.00	0.00	0.00	0.00
400.00	0.00	0.00	400.00	0.00	0.00	0.00	0.00	0.00	0.00
500.00	0.00	0.00	500.00	0.00	0.00	0.00	0.00	0.00	0.00
600.00	0.00	0.00	600.00	0.00	0.00	0.00	0.00	0.00	0.00
700.00	0.00	0.00	700.00	0.00	0.00	0.00	0.00	0.00	0.00
800.00	0.00	0.00	800.00	0.00	0.00	0.00	0.00	0.00	0.00
900.00	0.00	0.00	900.00	0.00	0.00	0.00	0.00	0.00	0.00
1,000.00	0.00	0.00	1,000.00	0.00	0.00	0.00	0.00	0.00	0.00
1,100.00	0.00	0.00	1,100.00	0.00	0.00	0.00	0.00	0.00	0.00
1,200.00	0.00	0.00	1,200.00	0.00	0.00	0.00	0.00	0.00	0.00
1,300.00	0.00	0.00	1,300.00	0.00	0.00	0.00	0.00	0.00	0.00
1,400.00	0.00	0.00	1,400.00	0.00	0.00	0.00	0.00	0.00	0.00
1,500.00	0.00	0.00	1,500.00	0.00	0.00	0.00	0.00	0.00	0.00
1,600.00	0.00	0.00	1,600.00	0.00	0.00	0.00	0.00	0.00	0.00
1,700.00	0.00	0.00	1,700.00	0.00	0.00	0.00	0.00	0.00	0.00
1,800.00	0.00	0.00	1,800.00	0.00	0.00	0.00	0.00	0.00	0.00
1,900.00	0.00	0.00	1,900.00	0.00	0.00	0.00	0.00	0.00	0.00
2,000.00	0.00	0.00	2,000.00	0.00	0.00	0.00	0.00	0.00	0.00
2,100.00	0.00	0.00	2,100.00	0.00	0.00	0.00	0.00	0.00	0.00
2,200.00	0.00	0.00	2,200.00	0.00	0.00	0.00	0.00	0.00	0.00
2,300.00	0.00	0.00	2,300.00	0.00	0.00	0.00	0.00	0.00	0.00
2,400.00	0.00	0.00	2,400.00	0.00	0.00	0.00	0.00	0.00	0.00
2,500.00	0.00	0.00	2,500.00	0.00	0.00	0.00	0.00	0.00	0.00
2,600.00	0.00	0.00	2,600.00	0.00	0.00	0.00	0.00	0.00	0.00
2,700.00	0.00	0.00	2,700.00	0.00	0.00	0.00	0.00	0.00	0.00
2,800.00	0.00	0.00	2,800.00	0.00	0.00	0.00	0.00	0.00	0.00
2,900.00	0.00	0.00	2,900.00	0.00	0.00	0.00	0.00	0.00	0.00
3,000.00	0.00	0.00	3,000.00	0.00	0.00	0.00	0.00	0.00	0.00
3,100.00	0.00	0.00	3,100.00	0.00	0.00	0.00	0.00	0.00	0.00
3,200.00	0.00	0.00	3,200.00	0.00	0.00	0.00	0.00	0.00	0.00
3,300.00	0.00	0.00	3,300.00	0.00	0.00	0.00	0.00	0.00	0.00
3,400.00	0.00	0.00	3,400.00	0.00	0.00	0.00	0.00	0.00	0.00
3,500.00	0.00	0.00	3,500.00	0.00	0.00	0.00	0.00	0.00	0.00
3,600.00	0.00	0.00	3,600.00	0.00	0.00	0.00	0.00	0.00	0.00
3,700.00	0.00	0.00	3,700.00	0.00	0.00	0.00	0.00	0.00	0.00
3,800.00	0.00	0.00	3,800.00	0.00	0.00	0.00	0.00	0.00	0.00
3,900.00	0.00	0.00	3,900.00	0.00	0.00	0.00	0.00	0.00	0.00
4,000.00	0.00	0.00	4,000.00	0.00	0.00	0.00	0.00	0.00	0.00
4,100.00	0.00	0.00	4,100.00	0.00	0.00	0.00	0.00	0.00	0.00
4,200.00	0.00	0.00	4,200.00	0.00	0.00	0.00	0.00	0.00	0.00
4,300.00	0.00	0.00	4,300.00	0.00	0.00	0.00	0.00	0.00	0.00
4,400.00	0.00	0.00	4,400.00	0.00	0.00	0.00	0.00	0.00	0.00
4,500.00	0.00	0.00	4,500.00	0.00	0.00	0.00	0.00	0.00	0.00
4,600.00	0.00	0.00	4,600.00	0.00	0.00	0.00	0.00	0.00	0.00
4,700.00	0.00	0.00	4,700.00	0.00	0.00	0.00	0.00	0.00	0.00
4,800.00	0.00	0.00	4,800.00	0.00	0.00	0.00	0.00	0.00	0.00
4,900.00	0.00	0.00	4,900.00	0.00	0.00	0.00	0.00	0.00	0.00
5,000.00	0.00	0.00	5,000.00	0.00	0.00	0.00	0.00	0.00	0.00
5,100.00	0.00	0.00	5,100.00	0.00	0.00	0.00	0.00	0.00	0.00
5,200.00	0.00	0.00	5,200.00	0.00	0.00	0.00	0.00	0.00	0.00
5,300.00	0.00	0.00	5,300.00	0.00	0.00	0.00	0.00	0.00	0.00



## Planning Report

<b>Database:</b>	EDM 5000.1.13 Single User Db	<b>Local Co-ordinate Reference:</b>	Well #125H
<b>Company:</b>	XTO Energy	<b>TVD Reference:</b>	RKB = 30' @ 3396.00usft
<b>Project:</b>	Eddy County, NM (NAD-27)	<b>MD Reference:</b>	RKB = 30' @ 3396.00usft
<b>Site:</b>	PLU 30 Big Sinks	<b>North Reference:</b>	Grid
<b>Well:</b>	#125H	<b>Survey Calculation Method:</b>	Minimum Curvature
<b>Wellbore:</b>	OH		
<b>Design:</b>	PERMIT-v3		

Planned Survey									
Measured Depth (usft)	Inclination (°)	Azimuth (°)	Vertical Depth (usft)	+N/-S (usft)	+E/-W (usft)	Vertical Section (usft)	Dogleg Rate (°/100usft)	Build Rate (°/100usft)	Turn Rate (°/100usft)
5,400.00	0.00	0.00	5,400.00	0.00	0.00	0.00	0.00	0.00	0.00
5,500.00	0.00	0.00	5,500.00	0.00	0.00	0.00	0.00	0.00	0.00
5,600.00	0.00	0.00	5,600.00	0.00	0.00	0.00	0.00	0.00	0.00
5,700.00	0.00	0.00	5,700.00	0.00	0.00	0.00	0.00	0.00	0.00
5,800.00	0.00	0.00	5,800.00	0.00	0.00	0.00	0.00	0.00	0.00
5,900.00	0.00	0.00	5,900.00	0.00	0.00	0.00	0.00	0.00	0.00
6,000.00	0.00	0.00	6,000.00	0.00	0.00	0.00	0.00	0.00	0.00
6,100.00	0.00	0.00	6,100.00	0.00	0.00	0.00	0.00	0.00	0.00
6,200.00	0.00	0.00	6,200.00	0.00	0.00	0.00	0.00	0.00	0.00
6,300.00	0.00	0.00	6,300.00	0.00	0.00	0.00	0.00	0.00	0.00
6,400.00	0.00	0.00	6,400.00	0.00	0.00	0.00	0.00	0.00	0.00
6,500.00	0.00	0.00	6,500.00	0.00	0.00	0.00	0.00	0.00	0.00
6,600.00	0.00	0.00	6,600.00	0.00	0.00	0.00	0.00	0.00	0.00
6,700.00	0.00	0.00	6,700.00	0.00	0.00	0.00	0.00	0.00	0.00
6,800.00	0.00	0.00	6,800.00	0.00	0.00	0.00	0.00	0.00	0.00
6,900.00	0.00	0.00	6,900.00	0.00	0.00	0.00	0.00	0.00	0.00
7,000.00	0.00	0.00	7,000.00	0.00	0.00	0.00	0.00	0.00	0.00
7,100.00	0.00	0.00	7,100.00	0.00	0.00	0.00	0.00	0.00	0.00
7,200.00	0.00	0.00	7,200.00	0.00	0.00	0.00	0.00	0.00	0.00
7,300.00	0.00	0.00	7,300.00	0.00	0.00	0.00	0.00	0.00	0.00
7,400.00	0.00	0.00	7,400.00	0.00	0.00	0.00	0.00	0.00	0.00
7,500.00	0.00	0.00	7,500.00	0.00	0.00	0.00	0.00	0.00	0.00
7,600.00	0.00	0.00	7,600.00	0.00	0.00	0.00	0.00	0.00	0.00
7,700.00	0.00	0.00	7,700.00	0.00	0.00	0.00	0.00	0.00	0.00
7,800.00	0.00	0.00	7,800.00	0.00	0.00	0.00	0.00	0.00	0.00
7,900.00	0.00	0.00	7,900.00	0.00	0.00	0.00	0.00	0.00	0.00
8,000.00	0.00	0.00	8,000.00	0.00	0.00	0.00	0.00	0.00	0.00
8,100.00	0.00	0.00	8,100.00	0.00	0.00	0.00	0.00	0.00	0.00
8,200.00	0.00	0.00	8,200.00	0.00	0.00	0.00	0.00	0.00	0.00
8,300.00	0.00	0.00	8,300.00	0.00	0.00	0.00	0.00	0.00	0.00
8,400.00	0.00	0.00	8,400.00	0.00	0.00	0.00	0.00	0.00	0.00
8,500.00	0.00	0.00	8,500.00	0.00	0.00	0.00	0.00	0.00	0.00
8,600.00	0.00	0.00	8,600.00	0.00	0.00	0.00	0.00	0.00	0.00
8,700.00	0.00	0.00	8,700.00	0.00	0.00	0.00	0.00	0.00	0.00
8,800.00	0.00	0.00	8,800.00	0.00	0.00	0.00	0.00	0.00	0.00
8,900.00	0.00	0.00	8,900.00	0.00	0.00	0.00	0.00	0.00	0.00
9,000.00	0.00	0.00	9,000.00	0.00	0.00	0.00	0.00	0.00	0.00
9,100.00	0.00	0.00	9,100.00	0.00	0.00	0.00	0.00	0.00	0.00
9,200.00	0.00	0.00	9,200.00	0.00	0.00	0.00	0.00	0.00	0.00
9,300.00	0.00	0.00	9,300.00	0.00	0.00	0.00	0.00	0.00	0.00
9,400.00	0.00	0.00	9,400.00	0.00	0.00	0.00	0.00	0.00	0.00
9,500.00	0.00	0.00	9,500.00	0.00	0.00	0.00	0.00	0.00	0.00
9,600.00	0.00	0.00	9,600.00	0.00	0.00	0.00	0.00	0.00	0.00
9,700.00	0.00	0.00	9,700.00	0.00	0.00	0.00	0.00	0.00	0.00
9,800.00	0.00	0.00	9,800.00	0.00	0.00	0.00	0.00	0.00	0.00
9,817.00	0.00	0.00	9,817.00	0.00	0.00	0.00	0.00	0.00	0.00
9,900.00	1.66	185.56	9,899.99	-1.20	-0.12	1.20	2.00	2.00	0.00
10,000.00	3.66	185.56	9,999.88	-5.82	-0.57	5.81	2.00	2.00	0.00
10,067.18	5.00	185.56	10,066.87	-10.87	-1.06	10.86	2.00	2.00	0.00
10,100.00	5.00	185.56	10,099.56	-13.71	-1.33	13.71	0.00	0.00	0.00
10,200.00	5.00	185.56	10,199.18	-22.40	-2.18	22.39	0.00	0.00	0.00
10,300.00	5.00	185.56	10,298.80	-31.08	-3.02	31.07	0.00	0.00	0.00
10,400.00	5.00	185.56	10,398.41	-39.76	-3.87	39.74	0.00	0.00	0.00
10,500.00	5.00	185.56	10,498.03	-48.44	-4.71	48.42	0.00	0.00	0.00



## Planning Report

<b>Database:</b>	EDM 5000.1.13 Single User Db	<b>Local Co-ordinate Reference:</b>	Well #125H
<b>Company:</b>	XTO Energy	<b>TVD Reference:</b>	RKB = 30' @ 3396.00usft
<b>Project:</b>	Eddy County, NM (NAD-27)	<b>MD Reference:</b>	RKB = 30' @ 3396.00usft
<b>Site:</b>	PLU 30 Big Sinks	<b>North Reference:</b>	Grid
<b>Well:</b>	#125H	<b>Survey Calculation Method:</b>	Minimum Curvature
<b>Wellbore:</b>	OH		
<b>Design:</b>	PERMIT-v3		

Planned Survey									
Measured Depth (usft)	Inclination (°)	Azimuth (°)	Vertical Depth (usft)	+N/-S (usft)	+E/-W (usft)	Vertical Section (usft)	Dogleg Rate (°/100usft)	Build Rate (°/100usft)	Turn Rate (°/100usft)
10,600.00	5.00	185.56	10,597.65	-57.12	-5.56	57.10	0.00	0.00	0.00
10,700.00	5.00	185.56	10,697.27	-65.80	-6.40	65.78	0.00	0.00	0.00
10,800.00	5.00	185.56	10,796.89	-74.48	-7.25	74.46	0.00	0.00	0.00
10,900.00	5.00	185.56	10,896.51	-83.16	-8.09	83.13	0.00	0.00	0.00
11,000.00	5.00	185.56	10,996.13	-91.84	-8.94	91.81	0.00	0.00	0.00
11,100.00	5.00	185.56	11,095.75	-100.52	-9.78	100.49	0.00	0.00	0.00
11,200.00	5.00	185.56	11,195.37	-109.21	-10.63	109.17	0.00	0.00	0.00
11,300.00	5.00	185.56	11,294.98	-117.89	-11.47	117.85	0.00	0.00	0.00
11,352.00	5.00	185.56	11,346.79	-122.40	-11.91	122.36	0.00	0.00	0.00
11,400.00	9.79	182.72	11,394.37	-128.56	-12.31	128.52	10.00	9.97	-5.92
11,450.00	14.79	181.71	11,443.21	-139.20	-12.70	139.15	10.00	9.99	-2.02
11,500.00	19.78	181.20	11,490.94	-154.04	-13.07	154.00	10.00	10.00	-1.02
11,550.00	24.78	180.89	11,537.19	-172.99	-13.41	172.95	10.00	10.00	-0.62
11,600.00	29.78	180.68	11,581.61	-195.90	-13.72	195.85	10.00	10.00	-0.42
11,650.00	34.78	180.52	11,623.87	-222.60	-13.99	222.55	10.00	10.00	-0.31
11,700.00	39.78	180.40	11,663.64	-252.87	-14.24	252.82	10.00	10.00	-0.24
11,750.00	44.78	180.31	11,700.62	-286.50	-14.44	286.45	10.00	10.00	-0.19
11,800.00	49.78	180.22	11,734.53	-323.22	-14.61	323.17	10.00	10.00	-0.16
11,850.00	54.78	180.15	11,765.11	-362.76	-14.74	362.71	10.00	10.00	-0.14
11,900.00	59.78	180.09	11,792.13	-404.81	-14.83	404.76	10.00	10.00	-0.12
11,950.00	64.78	180.04	11,815.38	-449.06	-14.88	449.00	10.00	10.00	-0.11
12,000.00	69.78	179.98	11,834.69	-495.16	-14.89	495.11	10.00	10.00	-0.10
12,050.00	74.78	179.94	11,849.90	-542.78	-14.86	542.72	10.00	10.00	-0.10
12,100.00	79.78	179.89	11,860.91	-591.53	-14.78	591.48	10.00	10.00	-0.09
12,150.00	84.78	179.85	11,867.63	-641.06	-14.67	641.01	10.00	10.00	-0.09
12,204.01	90.18	179.80	11,870.00	-695.00	-14.50	694.95	10.00	10.00	-0.09
12,300.00	90.18	179.80	11,869.70	-790.99	-14.16	790.94	0.00	0.00	0.00
12,400.00	90.18	179.80	11,869.39	-890.99	-13.81	890.94	0.00	0.00	0.00
12,500.00	90.18	179.80	11,869.08	-990.99	-13.45	990.94	0.00	0.00	0.00
12,600.00	90.18	179.80	11,868.76	-1,090.99	-13.10	1,090.94	0.00	0.00	0.00
12,700.00	90.18	179.80	11,868.45	-1,190.99	-12.75	1,190.94	0.00	0.00	0.00
12,800.00	90.18	179.80	11,868.14	-1,290.99	-12.39	1,290.93	0.00	0.00	0.00
12,900.00	90.18	179.80	11,867.82	-1,390.98	-12.04	1,390.93	0.00	0.00	0.00
13,000.00	90.18	179.80	11,867.51	-1,490.98	-11.69	1,490.93	0.00	0.00	0.00
13,100.00	90.18	179.80	11,867.20	-1,590.98	-11.34	1,590.93	0.00	0.00	0.00
13,200.00	90.18	179.80	11,866.89	-1,690.98	-10.98	1,690.93	0.00	0.00	0.00
13,300.00	90.18	179.80	11,866.57	-1,790.98	-10.63	1,790.93	0.00	0.00	0.00
13,400.00	90.18	179.80	11,866.26	-1,890.98	-10.28	1,890.93	0.00	0.00	0.00
13,500.00	90.18	179.80	11,865.95	-1,990.98	-9.92	1,990.93	0.00	0.00	0.00
13,600.00	90.18	179.80	11,865.64	-2,090.98	-9.57	2,090.93	0.00	0.00	0.00
13,700.00	90.18	179.80	11,865.32	-2,190.98	-9.22	2,190.93	0.00	0.00	0.00
13,800.00	90.18	179.80	11,865.01	-2,290.97	-8.86	2,290.93	0.00	0.00	0.00
13,900.00	90.18	179.80	11,864.70	-2,390.97	-8.51	2,390.93	0.00	0.00	0.00
14,000.00	90.18	179.80	11,864.39	-2,490.97	-8.16	2,490.93	0.00	0.00	0.00
14,100.00	90.18	179.80	11,864.07	-2,590.97	-7.80	2,590.93	0.00	0.00	0.00
14,200.00	90.18	179.80	11,863.76	-2,690.97	-7.45	2,690.93	0.00	0.00	0.00
14,300.00	90.18	179.80	11,863.45	-2,790.97	-7.10	2,790.93	0.00	0.00	0.00
14,400.00	90.18	179.80	11,863.14	-2,890.97	-6.74	2,890.93	0.00	0.00	0.00
14,500.00	90.18	179.80	11,862.82	-2,990.97	-6.39	2,990.93	0.00	0.00	0.00
14,600.00	90.18	179.80	11,862.51	-3,090.97	-6.04	3,090.93	0.00	0.00	0.00
14,700.00	90.18	179.80	11,862.20	-3,190.96	-5.68	3,190.93	0.00	0.00	0.00
14,800.00	90.18	179.80	11,861.89	-3,290.96	-5.33	3,290.92	0.00	0.00	0.00
14,900.00	90.18	179.80	11,861.57	-3,390.96	-4.98	3,390.92	0.00	0.00	0.00
15,000.00	90.18	179.80	11,861.26	-3,490.96	-4.62	3,490.92	0.00	0.00	0.00



## Planning Report

<b>Database:</b>	EDM 5000.1.13 Single User Db	<b>Local Co-ordinate Reference:</b>	Well #125H
<b>Company:</b>	XTO Energy	<b>TVD Reference:</b>	RKB = 30' @ 3396.00usft
<b>Project:</b>	Eddy County, NM (NAD-27)	<b>MD Reference:</b>	RKB = 30' @ 3396.00usft
<b>Site:</b>	PLU 30 Big Sinks	<b>North Reference:</b>	Grid
<b>Well:</b>	#125H	<b>Survey Calculation Method:</b>	Minimum Curvature
<b>Wellbore:</b>	OH		
<b>Design:</b>	PERMIT-v3		

Planned Survey									
Measured Depth (usft)	Inclination (°)	Azimuth (°)	Vertical Depth (usft)	+N/-S (usft)	+E/-W (usft)	Vertical Section (usft)	Dogleg Rate (°/100usft)	Build Rate (°/100usft)	Turn Rate (°/100usft)
15,100.00	90.18	179.80	11,860.95	-3,590.96	-4.27	3,590.92	0.00	0.00	0.00
15,200.00	90.18	179.80	11,860.64	-3,690.96	-3.92	3,690.92	0.00	0.00	0.00
15,300.00	90.18	179.80	11,860.32	-3,790.96	-3.57	3,790.92	0.00	0.00	0.00
15,400.00	90.18	179.80	11,860.01	-3,890.96	-3.21	3,890.92	0.00	0.00	0.00
15,500.00	90.18	179.80	11,859.70	-3,990.96	-2.86	3,990.92	0.00	0.00	0.00
15,600.00	90.18	179.80	11,859.39	-4,090.95	-2.51	4,090.92	0.00	0.00	0.00
15,700.00	90.18	179.80	11,859.07	-4,190.95	-2.15	4,190.92	0.00	0.00	0.00
15,800.00	90.18	179.80	11,858.76	-4,290.95	-1.80	4,290.92	0.00	0.00	0.00
15,900.00	90.18	179.80	11,858.45	-4,390.95	-1.45	4,390.92	0.00	0.00	0.00
16,000.00	90.18	179.80	11,858.14	-4,490.95	-1.09	4,490.92	0.00	0.00	0.00
16,100.00	90.18	179.80	11,857.82	-4,590.95	-0.74	4,590.92	0.00	0.00	0.00
16,200.00	90.18	179.80	11,857.51	-4,690.95	-0.39	4,690.92	0.00	0.00	0.00
16,300.00	90.18	179.80	11,857.20	-4,790.95	-0.03	4,790.92	0.00	0.00	0.00
16,400.00	90.18	179.80	11,856.89	-4,890.95	0.32	4,890.92	0.00	0.00	0.00
16,500.00	90.18	179.80	11,856.57	-4,990.94	0.67	4,990.92	0.00	0.00	0.00
16,600.00	90.18	179.80	11,856.26	-5,090.94	1.03	5,090.92	0.00	0.00	0.00
16,700.00	90.18	179.80	11,855.95	-5,190.94	1.38	5,190.92	0.00	0.00	0.00
16,800.00	90.18	179.80	11,855.63	-5,290.94	1.73	5,290.92	0.00	0.00	0.00
16,900.00	90.18	179.80	11,855.32	-5,390.94	2.09	5,390.91	0.00	0.00	0.00
17,000.00	90.18	179.80	11,855.01	-5,490.94	2.44	5,490.91	0.00	0.00	0.00
17,100.00	90.18	179.80	11,854.70	-5,590.94	2.79	5,590.91	0.00	0.00	0.00
17,200.00	90.18	179.80	11,854.38	-5,690.94	3.15	5,690.91	0.00	0.00	0.00
17,300.00	90.18	179.80	11,854.07	-5,790.94	3.50	5,790.91	0.00	0.00	0.00
17,400.00	90.18	179.80	11,853.76	-5,890.93	3.85	5,890.91	0.00	0.00	0.00
17,500.00	90.18	179.80	11,853.45	-5,990.93	4.21	5,990.91	0.00	0.00	0.00
17,600.00	90.18	179.80	11,853.13	-6,090.93	4.56	6,090.91	0.00	0.00	0.00
17,700.00	90.18	179.80	11,852.82	-6,190.93	4.91	6,190.91	0.00	0.00	0.00
17,800.00	90.18	179.80	11,852.51	-6,290.93	5.26	6,290.91	0.00	0.00	0.00
17,900.00	90.18	179.80	11,852.20	-6,390.93	5.62	6,390.91	0.00	0.00	0.00
18,000.00	90.18	179.80	11,851.88	-6,490.93	5.97	6,490.91	0.00	0.00	0.00
18,100.00	90.18	179.80	11,851.57	-6,590.93	6.32	6,590.91	0.00	0.00	0.00
18,200.00	90.18	179.80	11,851.26	-6,690.93	6.68	6,690.91	0.00	0.00	0.00
18,300.00	90.18	179.80	11,850.95	-6,790.92	7.03	6,790.91	0.00	0.00	0.00
18,400.00	90.18	179.80	11,850.63	-6,890.92	7.38	6,890.91	0.00	0.00	0.00
18,500.00	90.18	179.80	11,850.32	-6,990.92	7.74	6,990.91	0.00	0.00	0.00
18,600.00	90.18	179.80	11,850.01	-7,090.92	8.09	7,090.91	0.00	0.00	0.00
18,700.00	90.18	179.80	11,849.70	-7,190.92	8.44	7,190.91	0.00	0.00	0.00
18,800.00	90.18	179.80	11,849.38	-7,290.92	8.80	7,290.91	0.00	0.00	0.00
18,900.00	90.18	179.80	11,849.07	-7,390.92	9.15	7,390.91	0.00	0.00	0.00
19,000.00	90.18	179.80	11,848.76	-7,490.92	9.50	7,490.90	0.00	0.00	0.00
19,100.00	90.18	179.80	11,848.45	-7,590.92	9.86	7,590.90	0.00	0.00	0.00
19,200.00	90.18	179.80	11,848.13	-7,690.91	10.21	7,690.90	0.00	0.00	0.00
19,300.00	90.18	179.80	11,847.82	-7,790.91	10.56	7,790.90	0.00	0.00	0.00
19,400.00	90.18	179.80	11,847.51	-7,890.91	10.92	7,890.90	0.00	0.00	0.00
19,500.00	90.18	179.80	11,847.20	-7,990.91	11.27	7,990.90	0.00	0.00	0.00
19,600.00	90.18	179.80	11,846.88	-8,090.91	11.62	8,090.90	0.00	0.00	0.00
19,700.00	90.18	179.80	11,846.57	-8,190.91	11.98	8,190.90	0.00	0.00	0.00
19,800.00	90.18	179.80	11,846.26	-8,290.91	12.33	8,290.90	0.00	0.00	0.00
19,900.00	90.18	179.80	11,845.95	-8,390.91	12.68	8,390.90	0.00	0.00	0.00
20,000.00	90.18	179.80	11,845.63	-8,490.91	13.04	8,490.90	0.00	0.00	0.00
20,100.00	90.18	179.80	11,845.32	-8,590.90	13.39	8,590.90	0.00	0.00	0.00
20,200.00	90.18	179.80	11,845.01	-8,690.90	13.74	8,690.90	0.00	0.00	0.00
20,300.00	90.18	179.80	11,844.70	-8,790.90	14.09	8,790.90	0.00	0.00	0.00
20,400.00	90.18	179.80	11,844.38	-8,890.90	14.45	8,890.90	0.00	0.00	0.00



## Planning Report

<b>Database:</b>	EDM 5000.1.13 Single User Db	<b>Local Co-ordinate Reference:</b>	Well #125H
<b>Company:</b>	XTO Energy	<b>TVD Reference:</b>	RKB = 30' @ 3396.00usft
<b>Project:</b>	Eddy County, NM (NAD-27)	<b>MD Reference:</b>	RKB = 30' @ 3396.00usft
<b>Site:</b>	PLU 30 Big Sinks	<b>North Reference:</b>	Grid
<b>Well:</b>	#125H	<b>Survey Calculation Method:</b>	Minimum Curvature
<b>Wellbore:</b>	OH		
<b>Design:</b>	PERMIT-v3		

Planned Survey									
Measured Depth (usft)	Inclination (°)	Azimuth (°)	Vertical Depth (usft)	+N/-S (usft)	+E/-W (usft)	Vertical Section (usft)	Dogleg Rate (°/100usft)	Build Rate (°/100usft)	Turn Rate (°/100usft)
20,500.00	90.18	179.80	11,844.07	-8,990.90	14.80	8,990.90	0.00	0.00	0.00
20,600.00	90.18	179.80	11,843.76	-9,090.90	15.15	9,090.90	0.00	0.00	0.00
20,700.00	90.18	179.80	11,843.44	-9,190.90	15.51	9,190.90	0.00	0.00	0.00
20,800.00	90.18	179.80	11,843.13	-9,290.90	15.86	9,290.90	0.00	0.00	0.00
20,900.00	90.18	179.80	11,842.82	-9,390.90	16.21	9,390.90	0.00	0.00	0.00
21,000.00	90.18	179.80	11,842.51	-9,490.89	16.57	9,490.89	0.00	0.00	0.00
21,100.00	90.18	179.80	11,842.19	-9,590.89	16.92	9,590.89	0.00	0.00	0.00
21,200.00	90.18	179.80	11,841.88	-9,690.89	17.27	9,690.89	0.00	0.00	0.00
21,300.00	90.18	179.80	11,841.57	-9,790.89	17.63	9,790.89	0.00	0.00	0.00
21,400.00	90.18	179.80	11,841.26	-9,890.89	17.98	9,890.89	0.00	0.00	0.00
21,500.00	90.18	179.80	11,840.94	-9,990.89	18.33	9,990.89	0.00	0.00	0.00
21,600.00	90.18	179.80	11,840.63	-10,090.89	18.69	10,090.89	0.00	0.00	0.00
21,700.00	90.18	179.80	11,840.32	-10,190.89	19.04	10,190.89	0.00	0.00	0.00
21,800.00	90.18	179.80	11,840.01	-10,290.89	19.39	10,290.89	0.00	0.00	0.00
21,900.00	90.18	179.80	11,839.69	-10,390.88	19.75	10,390.89	0.00	0.00	0.00
22,000.00	90.18	179.80	11,839.38	-10,490.88	20.10	10,490.89	0.00	0.00	0.00
22,100.00	90.18	179.80	11,839.07	-10,590.88	20.45	10,590.89	0.00	0.00	0.00
22,200.00	90.18	179.80	11,838.76	-10,690.88	20.81	10,690.89	0.00	0.00	0.00
22,300.00	90.18	179.80	11,838.44	-10,790.88	21.16	10,790.89	0.00	0.00	0.00
22,400.00	90.18	179.80	11,838.13	-10,890.88	21.51	10,890.89	0.00	0.00	0.00
22,500.00	90.18	179.80	11,837.82	-10,990.88	21.86	10,990.89	0.00	0.00	0.00
22,600.00	90.18	179.80	11,837.51	-11,090.88	22.22	11,090.89	0.00	0.00	0.00
22,700.00	90.18	179.80	11,837.19	-11,190.88	22.57	11,190.89	0.00	0.00	0.00
22,800.00	90.18	179.80	11,836.88	-11,290.87	22.92	11,290.89	0.00	0.00	0.00
22,900.00	90.18	179.80	11,836.57	-11,390.87	23.28	11,390.89	0.00	0.00	0.00
23,000.00	90.18	179.80	11,836.26	-11,490.87	23.63	11,490.89	0.00	0.00	0.00
23,100.00	90.18	179.80	11,835.94	-11,590.87	23.98	11,590.88	0.00	0.00	0.00
23,200.00	90.18	179.80	11,835.63	-11,690.87	24.34	11,690.88	0.00	0.00	0.00
23,300.00	90.18	179.80	11,835.32	-11,790.87	24.69	11,790.88	0.00	0.00	0.00
23,400.00	90.18	179.80	11,835.01	-11,890.87	25.04	11,890.88	0.00	0.00	0.00
23,500.00	90.18	179.80	11,834.69	-11,990.87	25.40	11,990.88	0.00	0.00	0.00
23,600.00	90.18	179.80	11,834.38	-12,090.87	25.75	12,090.88	0.00	0.00	0.00
23,700.00	90.18	179.80	11,834.07	-12,190.86	26.10	12,190.88	0.00	0.00	0.00
23,800.00	90.18	179.80	11,833.76	-12,290.86	26.46	12,290.88	0.00	0.00	0.00
23,900.00	90.18	179.80	11,833.44	-12,390.86	26.81	12,390.88	0.00	0.00	0.00
24,000.00	90.18	179.80	11,833.13	-12,490.86	27.16	12,490.88	0.00	0.00	0.00
24,100.00	90.18	179.80	11,832.82	-12,590.86	27.52	12,590.88	0.00	0.00	0.00
24,200.00	90.18	179.80	11,832.51	-12,690.86	27.87	12,690.88	0.00	0.00	0.00
24,300.00	90.18	179.80	11,832.19	-12,790.86	28.22	12,790.88	0.00	0.00	0.00
24,400.00	90.18	179.80	11,831.88	-12,890.86	28.58	12,890.88	0.00	0.00	0.00
24,500.00	90.18	179.80	11,831.57	-12,990.86	28.93	12,990.88	0.00	0.00	0.00
24,600.00	90.18	179.80	11,831.26	-13,090.85	29.28	13,090.88	0.00	0.00	0.00
24,700.00	90.18	179.80	11,830.94	-13,190.85	29.64	13,190.88	0.00	0.00	0.00
24,800.00	90.18	179.80	11,830.63	-13,290.85	29.99	13,290.88	0.00	0.00	0.00
24,821.45	90.18	179.80	11,830.56	-13,312.30	30.06	13,312.32	0.00	0.00	0.00
24,900.00	90.18	179.80	11,830.32	-13,390.85	30.34	13,390.88	0.00	0.00	0.00
25,001.45	90.18	179.80	11,830.00	-13,492.30	30.70	13,492.33	0.00	0.00	0.00



## Planning Report

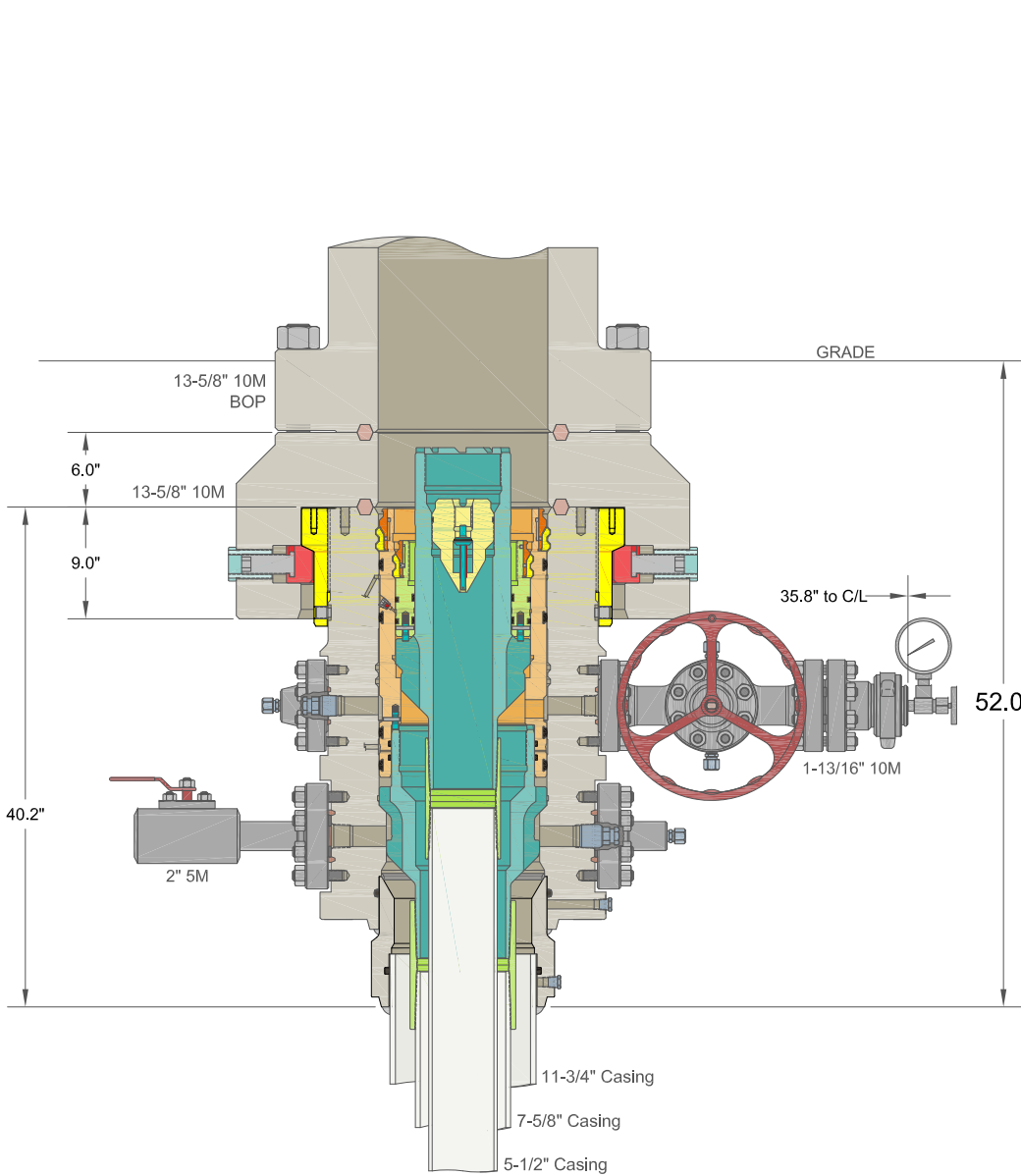
<b>Database:</b>	EDM 5000.1.13 Single User Db	<b>Local Co-ordinate Reference:</b>	Well #125H
<b>Company:</b>	XTO Energy	<b>TVD Reference:</b>	RKB = 30' @ 3396.00usft
<b>Project:</b>	Eddy County, NM (NAD-27)	<b>MD Reference:</b>	RKB = 30' @ 3396.00usft
<b>Site:</b>	PLU 30 Big Sinks	<b>North Reference:</b>	Grid
<b>Well:</b>	#125H	<b>Survey Calculation Method:</b>	Minimum Curvature
<b>Wellbore:</b>	OH		
<b>Design:</b>	PERMIT-v3		

## Design Targets

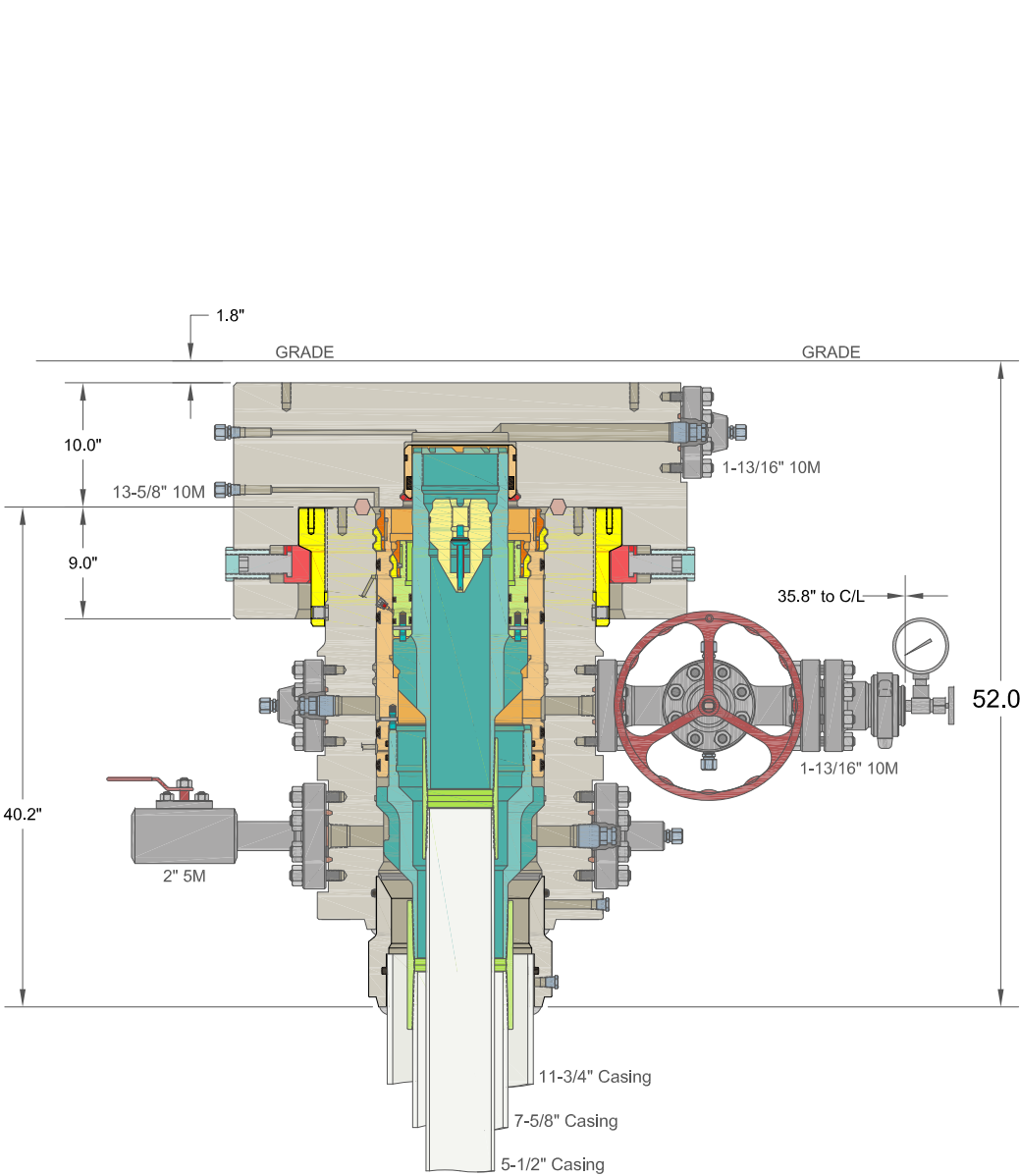
Target Name - hit/miss target - Shape	Dip Angle (°)	Dip Dir. (°)	TVD (usft)	+N/-S (usft)	+E/-W (usft)	Northing (usft)	Easting (usft)	Latitude	Longitude
#125H_SHL(2310' FN - plan hits target center - Point	0.00	0.00	0.00	0.00	0.00	401,240.00	660,535.10	32.1020638	-103.8148973
#125H_PBHL (150' F - plan hits target center - Point	0.00	0.00	11,830.00	-13,492.30	30.70	387,747.70	660,565.80	32.0649738	-103.8150075
#125H_LTP - plan misses target center by 0.56usft at 24821.45usft MD (11830.56 TVD, -13312.30 N, 30.06 E) - Point	0.00	0.00	11,830.56	-13,312.30	29.50	387,927.70	660,564.60	32.0654687	-103.8150086
#125H_FTP/ LP - plan hits target center - Point	0.00	0.00	11,870.00	-695.00	-14.50	400,545.00	660,520.60	32.1001535	-103.8149549

## Formations

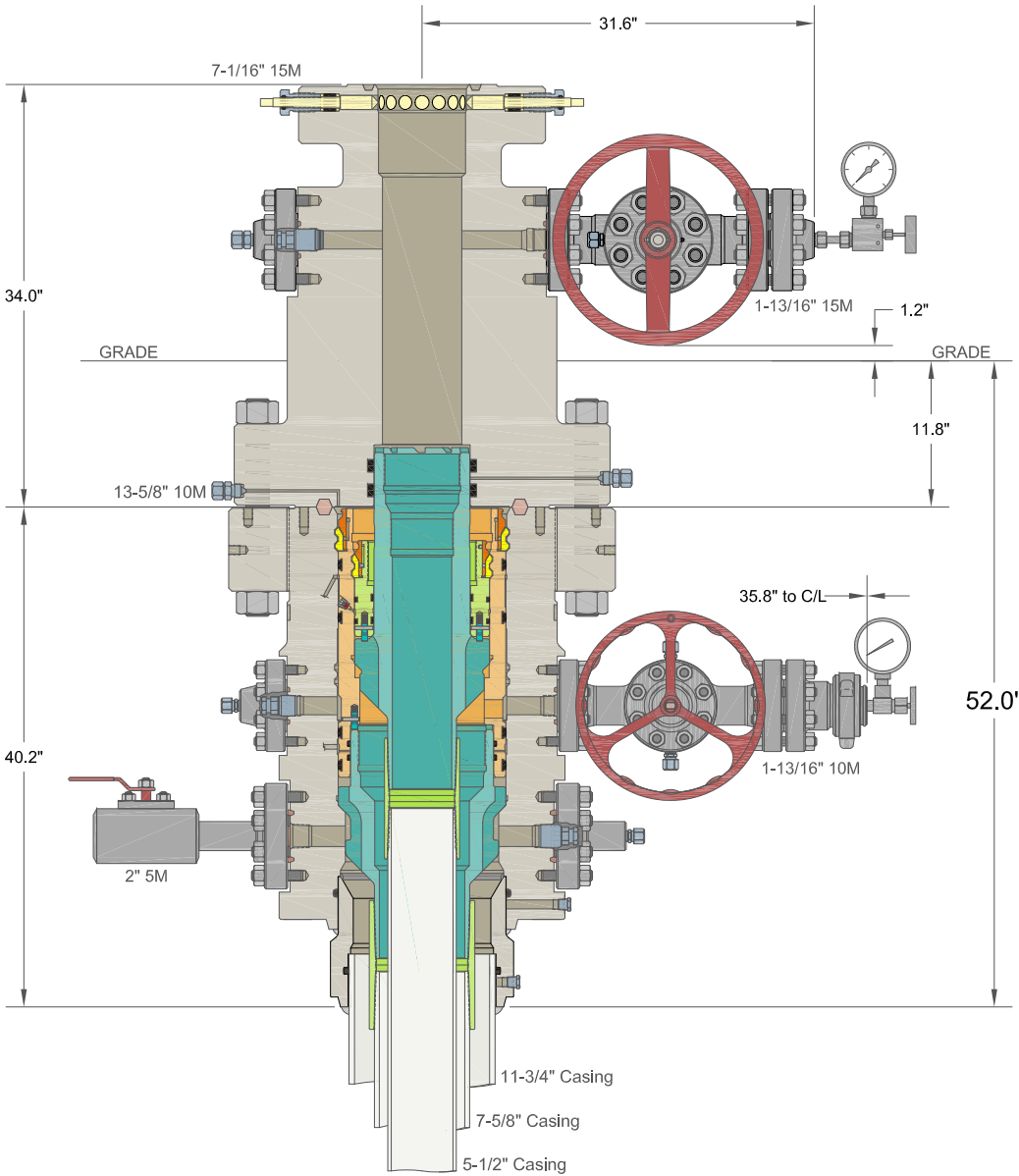
Measured Depth (usft)	Vertical Depth (usft)	Name	Lithology	Dip (°)	Dip Direction (°)
942.00	942.00	Rustler			
1,305.00	1,305.00	Salado/Top of Salt			
4,040.00	4,040.00	Base of Salt			
4,317.00	4,317.00	Delaware			
5,266.00	5,266.00	Cherry Canyon			
6,920.00	6,920.00	Brushy Canyon			
8,200.00	8,200.00	Bone Spring			
8,380.00	8,380.00	Upper Avalon Shale			
8,460.00	8,460.00	Bone Spring Lime			
8,880.00	8,880.00	Lower Avalon Shale			
9,200.00	9,200.00	First Bone Spring Ss.			
9,474.00	9,474.00	Second Bone Spring Carb.			
9,777.00	9,777.00	Second Bone Spring Sand			
10,294.18	10,293.00	Third Bone Spring Carb			
11,188.59	11,184.00	Harkey Ss.			
11,194.61	11,190.00	Third Bone Spring Sand			
11,575.39	11,560.00	Wolfcamp			
11,609.71	11,590.00	Wolfcamp X			
11,749.12	11,700.00	Wolfcamp Y			
11,763.37	11,710.00	Wolfcamp A			
11,986.84	11,830.00	TD			
12,204.01	11,870.00	Landing Point			



DRILLING



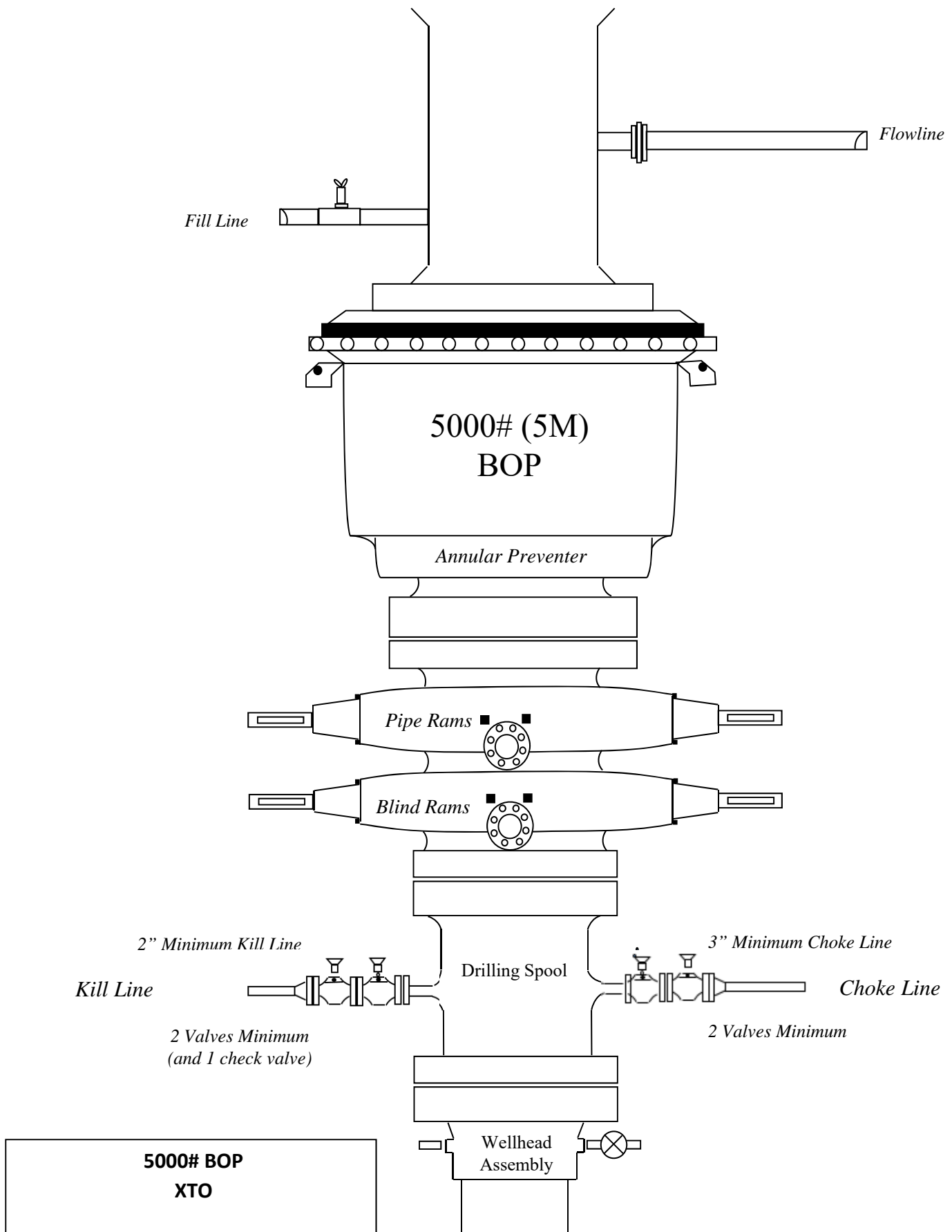
SKID

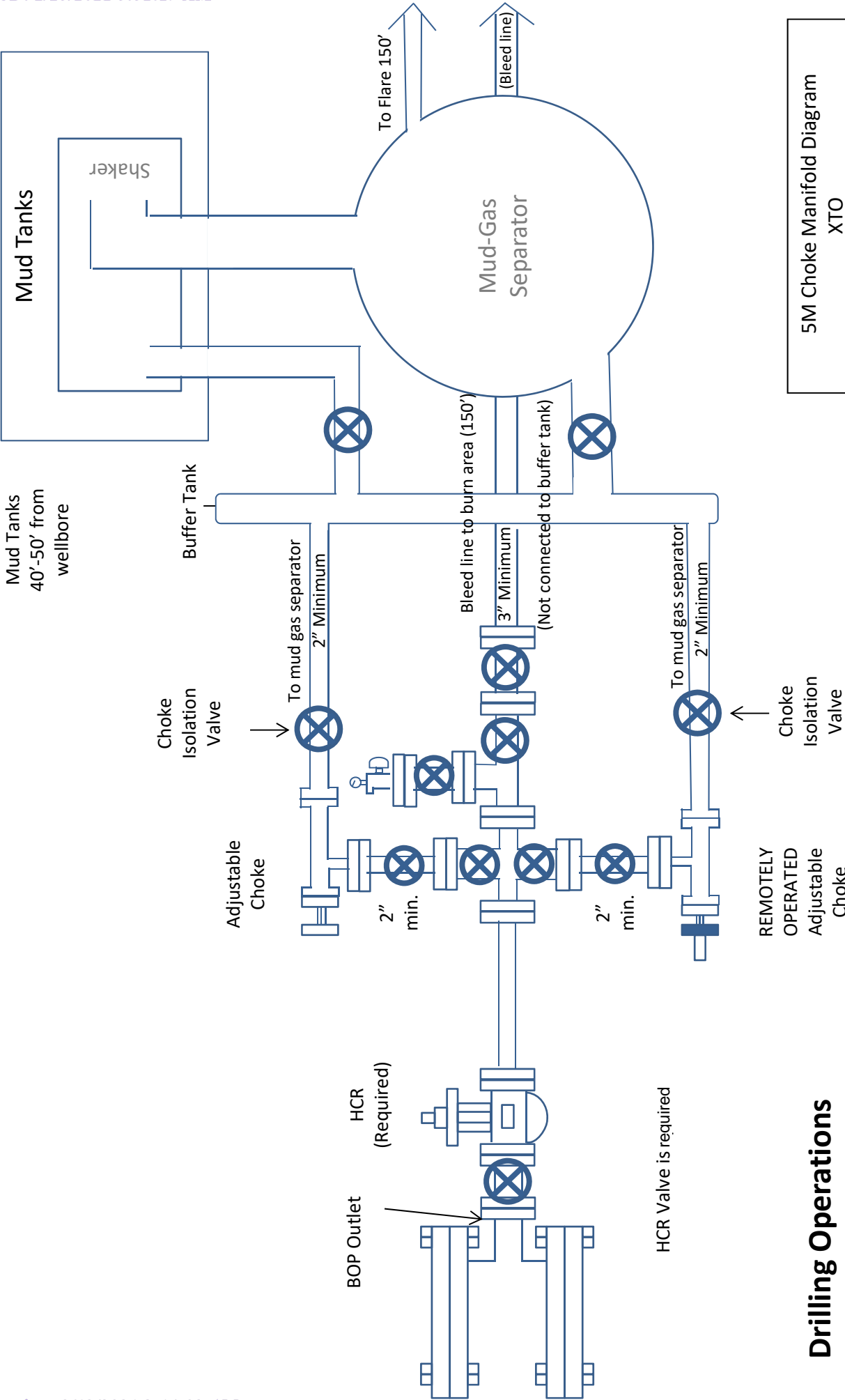


COMPLETION

ALL DIMENSIONS APPROXIMATE

CACTUS WELLHEAD LLC		XTO ENERGY INC POKER LAKE, NM	
30" x 11-3/4" x 7-5/8" x 5-1/2" MBU-3T-SF SOW Wellhead System With 13-5/8" 10M x 7-1/16" 15M CTH-DBLHPS-SB Tubing Head And 7-5/8" & 5-1/2" Fluted Mandrel Casing Hangers	DRAWN	DLE	09DEC19
	APPRV		
	DRAWING NO. ODE0003261		





**Drilling Operations  
Choke Manifold  
5M Service**

XTO respectfully requests approval to utilize a spudder rig to pre-set surface casing.

Description of Operations:

1. Spudder rig will move in to drill the surface hole and pre-set surface casing on the well.
  - a. After drilling the surface hole section, the spudder rig will run casing and cement following all of the applicable rules and regulations (OnShore Order 2, all COAs and NMOCD regulations).
  - b. The spudder rig will utilize fresh water-based mud to drill the surface hole to TD. Solids control will be handled entirely on a closed loop basis. No earth pits will be used.
2. The wellhead will be installed and tested as soon as the surface casing is cut off and WOC time has been reached.
3. A blind flange at the same pressure rating as the wellhead will be installed to seal the wellbore. Pressure will be monitored with needle valves installed on two wing valves.
  - a. A means for intervention will be maintained while the drilling rig is not over the well.
4. Spudder rig operations are expected to take 2-3 days per well on the pad.
5. The BLM will be contacted and notified 24 hours prior to commencing spudder rig operations.
6. Drilling Operations will begin with a larger rig and a BOP stack equal to or greater than the pressure rating that was permitted will be nipped up and tested on the wellhead before drilling operations resume on each well.
  - a. The larger rig will move back onto the location within 180 days from the point at which the wells are secured and the spudder rig is moved off location.
  - b. The BLM will be notified 24 hours before the larger rig moves back on the pre-set locations
7. XTO will have supervision on the rig to ensure compliance with all BLM and NMOCD regulations and to oversee operations.
8. Once the rig is removed, XTO will secure the wellhead area by placing a guard rail around the cellar area.

**XTO Permian Operating, LLC Offline Cementing Variance Request**

XTO requests the option to cement the surface and intermediate casing strings offline as a prudent batch drilling efficiency of acreage development.

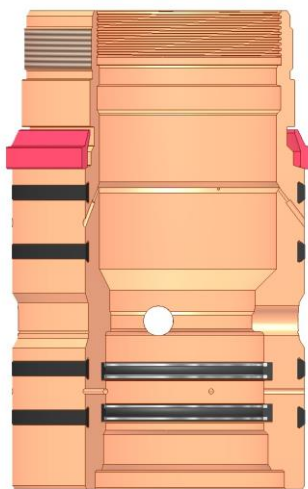
**1. Cement Program**

No changes to the cement program will take place for offline cementing.

**2. Offline Cementing Procedure**

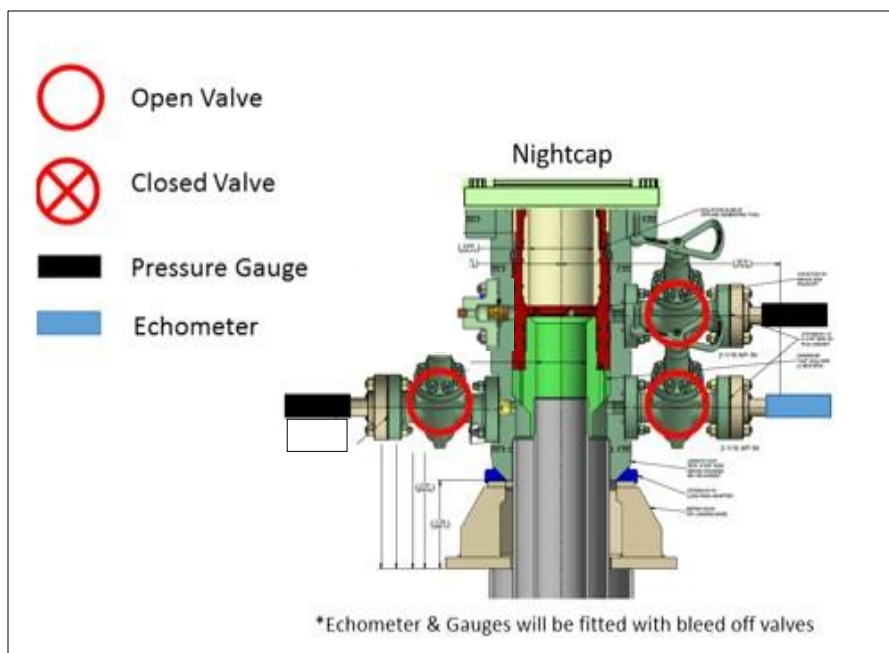
The operational sequence will be as follows. If a well control event occurs, the BLM will be contacted for approval prior to conducting offline cementing operations.

1. Run casing as per normal operations. While running casing, conduct negative pressure test and confirm integrity of the float equipment (float collar and shoe)
2. Land casing with mandrel
3. Fill pipe with kill weight fluid, do not circulate through floats and confirm well is static
4. Set annular packoff shown below and pressure test to confirm integrity of the seal. Pressure ratings of wellhead components and valves is 5,000 psi.
5. After confirmation of both annular barriers and internal barriers, nipple down BOP and install cap flange.
  - a. If any barrier fails to test, the BOP stack will not be nippedled down until after the cement job is completed with cement 500ft above the highest formation capable of flow with kill weight mud above or after it has achieved 50-psi compressive strength if kill weight fluid cannot be verified.



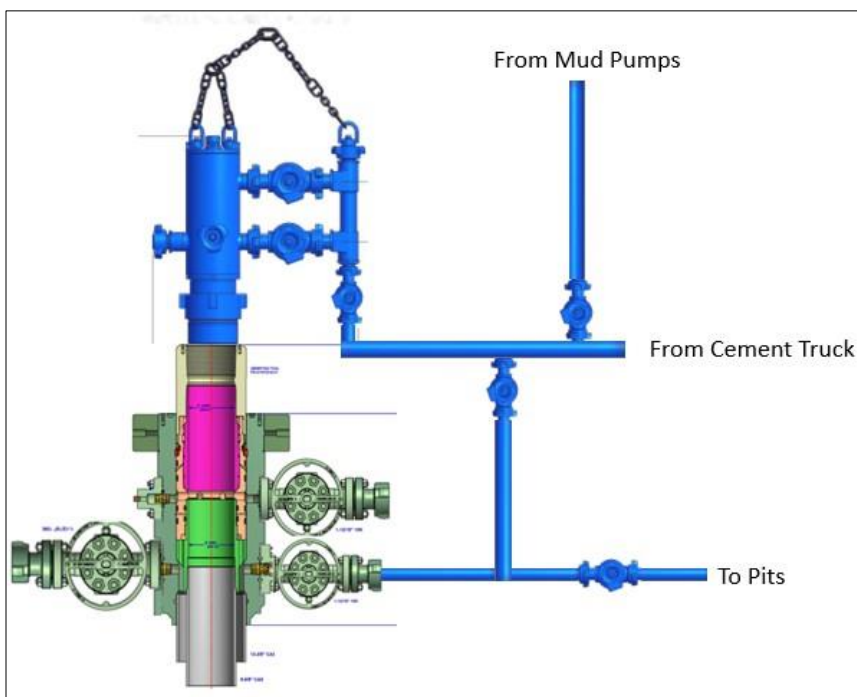
Annular packoff with both external and internal seals

## XTO Permian Operating, LLC Offline Cementing Variance Request



Wellhead diagram during skidding operations

6. Skid rig to next well on pad.
7. Confirm well is static before removing cap flange, flange will not be removed and offline cementing operations will not commence until well is under control. If well is not static, casing outlet valves will provide access to both the casing ID and annulus. Rig or third party pump truck will kill well prior to cementing or nipping up for further remediation.
  - a. Well Control Plan
    - i. The Drillers Method will be the primary well control method to regain control of the wellbore prior to cementing, if wellbore conditions do not permit the drillers method other methods of well control may be used
    - ii. Rig pumps or a 3<sup>rd</sup> party pump will be tied into the upper casing valve to pump down the casing ID
    - iii. A high pressure return line will be rigged up to lower casing valve and run to choke manifold to control annular pressure
    - iv. Once influx is circulated out of the hole, kill weight mud will be circulated
    - v. Well will be confirmed static
    - vi. Once confirmed static, cap flange will be removed to allow for offline cementing operations to commence
8. Install offline cement tool
9. Rig up cement equipment

**XTO Permian Operating, LLC Offline Cementing Variance Request**

Wellhead diagram during offline cementing operations

10. Circulate bottoms up with cement truck
  - a. If gas is present on bottoms up, well will be shut in and returns rerouted through gas buster to handle entrained gas
  - b. Max anticipated time before circulating with cement truck is 6 hrs
11. Perform cement job taking returns from the annulus wellhead valve
12. Confirm well is static and floats are holding after cement job
13. Remove cement equipment, offline cement tools and install night cap with pressure gauge for monitoring.

**Subject:** Request for a Variance Allowing break Testing of the Blowout Preventer Equipment (BOPE)

XTO Energy requests a variance to ONLY test broken pressure seals on the BOPE and function test BOP when skidding a drilling rig between multiple wells on a pad.

**Background**

Onshore Oil and Gas Order (OOGO) No. 2, Drilling Operations, Sections III.A.2.i.iv.B states that the BOP test must be performed whenever any seal subject to test pressure is broken. The current interpretation of the Bureau of Land Management (BLM) requires a complete BOP test and not just a test of the affected component. OOGO No. 2, Section I.D.2 states, "Some situation may exist either on a well-by-well basis or field-wide basis whereby it is commonly accepted practice to vary a particular minimum standard(s) established in this order. This situation can be resolved by requesting a variance...". XTO Energy feels the break testing the BOPE is such a situation. Therefore, as per OOGO No. 2, Section IV., XTO Energy submits this request for the variance.

**Supporting Documentation**

OOGO No. 2 became effective on December 19, 1988 and has remained the standard for regulating BLM onshore drilling operations for over 30 years. During this time there have been significant changes in drilling technology. BLM continues to use the variance request process to allow for the use of modern technology and acceptable engineering practices that have arisen since OOGO No. 2 was originally released. The XTO Energy drilling rig fleet has many modern upgrades that allow the intact BOP stack to be moved between well slots on a multi-well pad, as well as, wellhead designs that incorporate quick connects facilitating release of the BOP from the wellhead without breaking any BOP stack components apart. These technologies have been used extensively offshore, and other regulators, API, and many operators around the world have endorsed break testing as safe and reliable.



Figure 1: Winch System attached to BOP Stack

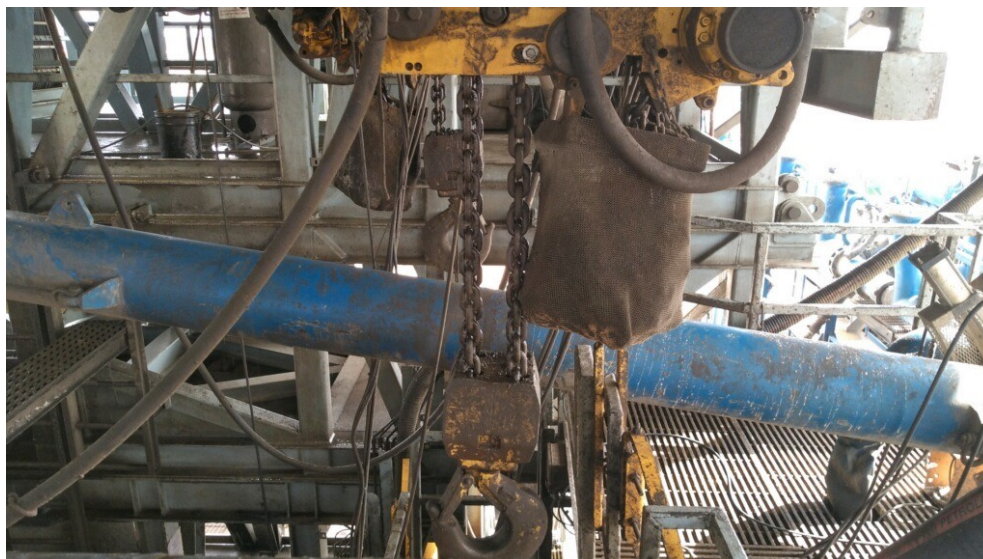


Figure 2: BOP Winch System

American Petroleum Institute (API) standards, specification and recommended practices are considered the industry standard and are consistently utilized and referenced by the industry. OOGO No. 2 recognizes API recommended Practices (RP) 53 in its original development. API Standard 53, *Well Control Equipment Systems for Drilling Wells* (Fifth Edition, December 2018, Annex C, Table C.4) recognizes break testing as an acceptable practice. Specifically, API Standard 53, Section 5.3.7.1 states “A pressure test of the pressure containing component shall be performed following the disconnection or repair, limited to the affected component.” See Table C.4 below for reference.

62

API STANDARD 53

Table C.4—Initial Pressure Testing, Surface BOP Stacks

Component to be Pressure Tested	Pressure Test—Low Pressure <sup>ac</sup> psig (MPa)	Pressure Test—High Pressure <sup>ac</sup>	
		Change Out of Component, Elastomer, or Ring Gasket	No Change Out of Component, Elastomer, or Ring Gasket
Annular preventer <sup>b</sup>	250 to 350 (1.72 to 2.41)	RWP of annular preventer	MASP or 70% annular RWP, whichever is lower.
Fixed pipe, variable bore, blind, and BSR preventers <sup>bd</sup>	250 to 350 (1.72 to 2.41)	RWP of ram preventer or wellhead system, whichever is lower	ITP
Choke and kill line and BOP side outlet valves below ram preventers (both sides)	250 to 350 (1.72 to 2.41)	RWP of side outlet valve or wellhead system, whichever is lower	ITP
Choke manifold—upstream of chokes <sup>e</sup>	250 to 350 (1.72 to 2.41)	RWP of ram preventers or wellhead system, whichever is lower	ITP
Choke manifold—downstream of chokes <sup>e</sup>	250 to 350 (1.72 to 2.41)	RWP of valve(s), line(s), or MASP for the well program, whichever is lower	
Kelly, kelly valves, drill pipe safety valves, IBOPs	250 to 350 (1.72 to 2.41)	MASP for the well program	

<sup>a</sup> Pressure test evaluation periods shall be a minimum of five minutes.

No visible leaks.

The pressure shall remain stable during the evaluation period. The pressure shall not decrease below the intended test pressure.

<sup>b</sup> Annular(s) and VBR(s) shall be pressure tested on the largest and smallest OD drill pipe to be used in well program.

<sup>c</sup> For pad drilling operations, moving from one wellhead to another within the 21 days, pressure testing is required for pressure-containing and pressure-controlling connections when the integrity of a pressure seal is broken.

<sup>d</sup> For surface offshore operations, the ram BOPs shall be pressure tested with the ram locks engaged and the closing and locking pressure vented during the initial test. For land operations, the ram BOPs shall be pressure tested with the ram locks engaged and the closing and locking pressure vented at commissioning and annually.

<sup>e</sup> Adjustable chokes are not required to be full sealing devices. Pressure testing against a closed choke is not required.

The Bureau of Safety and Environmental Enforcement (BSEE), Department of Interior, has also utilized the API standards, specification and best practices in the development of its offshore oil and gas regulations and incorporates them by reference within its regulations.

Break testing has been approved by the BLM in the past with other operators based on the detailed information provided in this document.

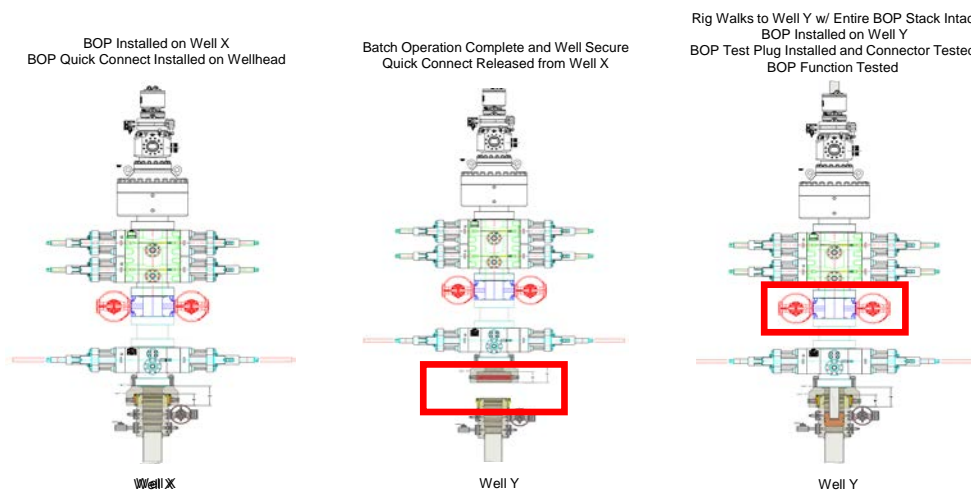
XTO Energy feels break testing and our current procedures meet the intent of OOGO No. 2 and often exceed it. There has been no evidence that break testing results in more components failing than seen on full BOP tests. XTO Energy's internal standards requires complete BOPE tests more often than that of OOGO No. 2 (Every 21 days). In addition to function testing the annular, pipe rams and blind rams after each BOP nipple up, XTO Energy performs a choke drill with the rig crew prior to drilling out every casing shoe. This is additional training for the rig crew that exceeds the requirements of the OOGO No.2.

### **Procedures**

1. XTO Energy will use this document for our break testing plan for New Mexico Delaware basin. The summary below will be referenced in the APD or Sundry Notice and receive approval prior to implementing this variance.
2. XTO Energy will perform BOP break testing on multi-wells pads where multiple intermediate sections can be drilled and cased within the 21-day BOP test window.
  - a. A full BOP test will be conducted on the first well on the pad.
  - b. The first intermediate hole section drilled on the pad will be the deepest. All of the remaining hole sections will be the same depth or shallower.
    - i. Our Lower WC targets set the intermediate casing shoe no deeper than the Wolfcamp B.
    - ii. Our Upper WC targets set the intermediate casing shoe shallower than the Wolfcamp B.
  - c. A Full BOP test will be required if the intermediate hole section being drilled has a MASP over 5M.
  - d. A full BOP test will be required prior to drilling any production hole.
3. After performing a complete BOP test on the first well, the intermediate hole section will be drilled and cased, two breaks would be made on the BOP equipment.
  - a. Between the HCV valve and choke line connection
  - b. Between the BOP quick connect and the wellhead
4. The BOP is then lifted and removed from the wellhead by a hydraulic system.
5. After skidding to the next well, the BOP is moved to the wellhead by the same hydraulic system and installed.
6. The connections mentioned in 3a and 3b will then be reconnected.
7. Install test plug into the wellhead using test joint or drill pipe.
8. A shell test is performed against the upper pipe rams testing the two breaks.
9. The shell test will consist of a 250 psi low test and a high test to the value submitted in the APD or Sundry (e.g. 5,000 psi or 10,000psi).
10. Function test will be performed on the following components: lower pipe rams, blind rams, and annular.

11. For a multi-well pad the same two breaks on the BOP would be made and on the next wells and steps 4 through 10 would be repeated.
12. A second break test would only be done if the intermediate hole section being drilled could not be completed within the 21 day BOP test window.

*Note: Picture below highlights BOP components that will be tested during batch operations*



### Summary

A variance is requested to **ONLY** test broken pressure seals on the BOP equipment when moving from wellhead to wellhead which is in compliance with API Standard 53. API Standard 53 states, that for pad drilling operation, moving from one wellhead to another within 21 days, pressure testing is required for pressure-containing and pressure-controlling connections when the integrity of a pressure seal is broken.

The BOP will be secured by a hydraulic carrier or cradle. The BLM will be contacted if a Well Control event occurs prior to the commencement of a BOPE Break Testing operation.

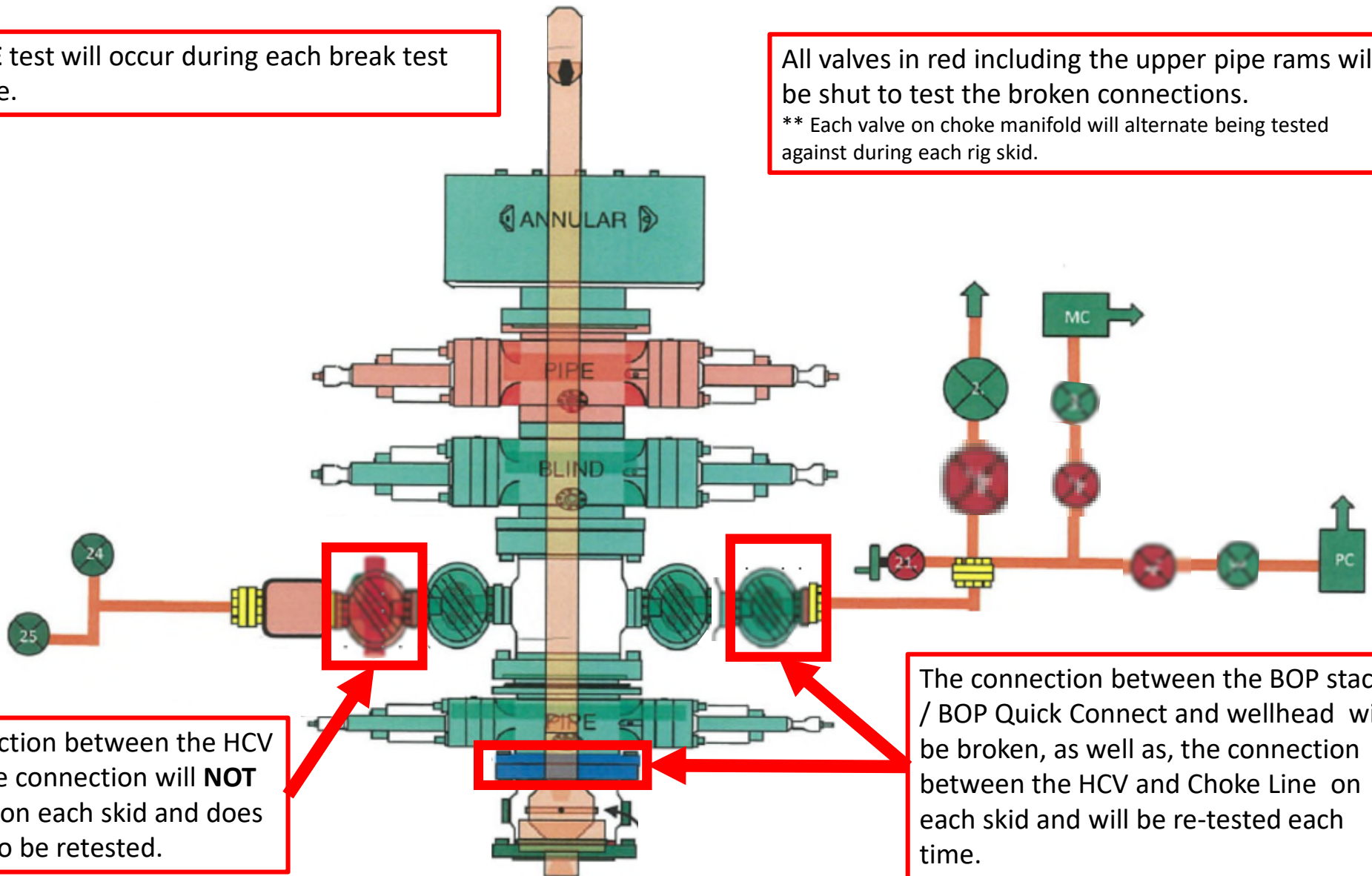
Based on discussions with the BLM on February 27th 2020 and the supporting documentation submitted to the BLM, we will request permission to **ONLY** retest broken pressure seals if the following conditions are met:

1. After a full BOP test is conducted on the first well on the pad.
2. The first intermediate hole section drilled on the pad will be the deepest. All of the remaining hole sections will be the same depth or shallower.
3. Full BOP test will be required if the intermediate hole section being drilled has a MASP over 5M.
4. Full BOP test will be required prior to drilling the production hole.

Only **ONE** test will occur during each break test procedure.

All valves in red including the upper pipe rams will be shut to test the broken connections.

\*\* Each valve on choke manifold will alternate being tested against during each rig skid.



The connection between the HCV and kill line connection will **NOT** be broken on each skid and does not need to be retested.

The connection between the BOP stack / BOP Quick Connect and wellhead will be broken, as well as, the connection between the HCV and Choke Line on each skid and will be re-tested each time.

<b>Well Name:</b> POKER LAKE UNIT 30 BS	<b>Well Location:</b> T25S / R31E / SEC 30 / SWNE / 32.102188 / -103.815377	<b>County or Parish/State:</b> EDDY / NM
<b>Well Number:</b> 125H	<b>Type of Well:</b> CONVENTIONAL GAS WELL	<b>Allottee or Tribe Name:</b>
<b>Lease Number:</b> NMLC0061634B, NMLC061634B	<b>Unit or CA Name:</b> POKER LAKE	<b>Unit or CA Number:</b> NMNM071016X, NMNM71016X
<b>US Well Number:</b> 3001546949	<b>Well Status:</b> Approved Application for Permit to Drill	<b>Operator:</b> XTO PERMIAN OPERATING LLC

Conditions of Approval

Specialist Review

253130\_Poker\_Lake\_Unit\_30\_BS\_125H\_01\_29\_2021\_20210129133627.pdf

Operator Certification

I certify that the foregoing is true and correct. Title 18 U.S.C. Section 1001 and Title 43 U.S.C. Section 1212, make it a crime for any person knowingly and willfully to make to any department or agency of the United States any false, fictitious or fraudulent statements or representations as to any matter within its jurisdiction. Electronic submission of Sundry Notices through this system satisfies regulations requiring a submission of Form 3160-5 or a Sundry Notice.

<b>Operator Electronic Signature:</b> RABADUE	<b>Signed on:</b> JAN 29, 2021 01:07 PM
<b>Name:</b> XTO PERMIAN OPERATING LLC	
<b>Title:</b> Regulatory Coordinator	
<b>Street Address:</b> 6401 HOLIDAY HILL ROAD, BLDG 5	
<b>City:</b> MIDLAND	<b>State:</b> TX
<b>Phone:</b> (432) 682-8873	
<b>Email address:</b> NOT ENTERED	

Field Representative

<b>Representative Name:</b>		
<b>Street Address:</b>		
<b>City:</b>	<b>State:</b>	<b>Zip:</b>
<b>Phone:</b>		
<b>Email address:</b>		

BLM Point of Contact

<b>BLM POC Name:</b> JENNIFER SANCHEZ	<b>BLM POC Title:</b> Petroleum Engineer
<b>BLM POC Phone:</b> 5756270237	<b>BLM POC Email Address:</b> j1sanchez@blm.gov
<b>Disposition:</b> Approved	<b>Disposition Date:</b> 01/29/2021
<b>Signature:</b> Jennifer Sanchez	

## PECOS DISTRICT DRILLING CONDITIONS OF APPROVAL

<b>OPERATOR'S NAME:</b>	<b>XTO Permian Operating, LLC</b>
<b>LEASE NO.:</b>	<b>NMLC-0061634B</b>
<b>WELL NAME &amp; NO.:</b>	<b>Poker Lake Unit 30 BS 125H</b>
<b>SURFACE HOLE FOOTAGE:</b>	<b>2310' FNL &amp; 2010' FEL</b>
<b>BOTTOM HOLE FOOTAGE:</b>	<b>0150' FSL &amp; 2022' FEL Sec. 06, T.26 S., R.31 E.</b>
<b>LOCATION:</b>	<b>Section 30, T.25 S., R.31 E., NMPM</b>
<b>COUNTY:</b>	<b>Eddy County, New Mexico</b>

COA

H2S	<input type="radio"/> Yes	<input checked="" type="radio"/> No	
Potash	<input checked="" type="radio"/> None	<input type="radio"/> Secretary	<input type="radio"/> R-111-P
Cave/Karst Potential	<input type="radio"/> Low	<input checked="" type="radio"/> Medium	<input type="radio"/> High
Cave/Karst Potential	<input type="radio"/> Critical		
Variance	<input type="radio"/> None	<input checked="" type="radio"/> Flex Hose	<input type="radio"/> Other
Wellhead	<input type="radio"/> Conventional	<input checked="" type="radio"/> Multibowl	<input type="radio"/> Both
Other	<input type="checkbox"/> 4 String Area	<input type="checkbox"/> Capitan Reef	<input type="checkbox"/> WIPP
Other	<input checked="" type="checkbox"/> Fluid Filled	<input type="checkbox"/> Cement Squeeze	<input type="checkbox"/> Pilot Hole
Special Requirements	<input type="checkbox"/> Water Disposal	<input type="checkbox"/> COM	<input checked="" type="checkbox"/> Unit

### Medium Cave/Karst

**Possibility of water flows in the Salado and Castile.**

**Possibility of lost circulation in the Red Beds, Rustler, and Delaware.**

**Abnormal pressure may be encountered in the 3rd Bone Spring and all subsequent formations.**

### A. HYDROGEN SULFIDE

Hydrogen Sulfide (H2S) monitors shall be installed prior to drilling out the surface shoe. If H2S is detected in concentrations greater than 100 ppm, the Hydrogen Sulfide area shall meet Onshore Order 6 requirements, which includes equipment and personnel/public protection items. If Hydrogen Sulfide is encountered, provide measured values and formations to the BLM.

**B. CASING**

1. The **11-3/4** inch surface casing shall be set at approximately **930** feet (a minimum of 70 feet (Eddy County) into the Rustler Anhydrite and above the salt) and cemented to the surface.
  - a. If cement does not circulate to the surface, the appropriate BLM office shall be notified and a temperature survey utilizing an electronic type temperature survey with surface log readout will be used or a cement bond log shall be run to verify the top of the cement. Temperature survey will be run a minimum of six hours after pumping cement and ideally between 8-10 hours after completing the cement job.
  - b. Wait on cement (WOC) time for a primary cement job will be a minimum of **8 hours** or 500 pounds compressive strength, whichever is greater. (This is to include the lead cement)
  - c. Wait on cement (WOC) time for a remedial job will be a minimum of 4 hours after bringing cement to surface or 500 pounds compressive strength, whichever is greater.
  - d. If cement falls back, remedial cementing will be done prior to drilling out that string.

**Intermediate casing must be kept fluid filled to meet BLM minimum collapse requirement.**

2. The minimum required fill of cement behind the **7-5/8** inch intermediate casing is:
  - Cement as proposed. Report Echo meter results on subsequent sundry. **Wait on cement (WOC) time for a primary cement job is to include the lead cement slurry due to cave/karst.**
  - ❖ In Medium Cave/Karst Areas if cement does not circulate to surface on the first two casing strings, the cement on the 3rd casing string must come to surface.
3. The minimum required fill of cement behind the **5-1/2** inch production casing is:
  - Cement should tie-back at least **200 feet** into previous casing string. Operator shall provide method of verification.

## C. PRESSURE CONTROL

1. Operator has proposed a multi-bowl wellhead assembly. This assembly will only be tested when installed on the surface casing. Minimum working pressure of the blowout preventer (BOP) and related equipment (BOPE) required for drilling below the surface casing shoe shall be **5000 (5M)** psi.
  - a. Wellhead shall be installed by manufacturer's representatives, submit documentation with subsequent sundry.
  - b. If the welding is performed by a third party, the manufacturer's representative shall monitor the temperature to verify that it does not exceed the maximum temperature of the seal.
  - c. Manufacturer representative shall install the test plug for the initial BOP test.
  - d. If the cement does not circulate and one inch operations would have been possible with a standard wellhead, the well head shall be cut off, cementing operations performed and another wellhead installed.
  - e. Whenever any seal subject to test pressure is broken, all the tests in OOGO2.III.A.2.i must be followed.

### **BOP Break Testing Variance**

- Shell testing is not approved for any portion of the hole with a MASP of 5000 psi or greater.
- While in transfer between wells, the BOPE shall be secured by the hydraulic carrier or cradle.
- Any well control event while drilling require notification to the BLM Petroleum Engineer prior to the commencement of any BOP Break Testing operations.
- A full BOP test is required prior to drilling the first deep intermediate hole section. If any subsequent hole interval is deeper than the first, a full BOP test will be required.

#### **D. SPECIAL REQUIREMENT (S)**

##### **Unit Wells**

The well sign for a unit well shall include the unit number in addition to the surface and bottom hole lease numbers. This also applies to participating area numbers. If a participating area has not been established, the operator can use the general unit designation, but will replace the unit number with the participating area number when the sign is replaced.

##### **Commercial Well Determination**

A commercial well determination shall be submitted after production has been established for at least six months.

## GENERAL REQUIREMENTS

The BLM is to be notified in advance for a representative to witness:

- a. Spudding well (minimum of 24 hours)
- b. Setting and/or Cementing of all casing strings (minimum of 4 hours)
- c. BOPE tests (minimum of 4 hours)

☒ Eddy County

Call the Carlsbad Field Office, 620 East Greene St., Carlsbad, NM 88220,  
(575) 361-2822

1. Unless the production casing has been run and cemented or the well has been properly plugged, the drilling rig shall not be removed from over the hole without prior approval.
  - a. In the event the operator has proposed to drill multiple wells utilizing a skid/walking rig. Operator shall secure the wellbore on the current well, after installing and testing the wellhead, by installing a blind flange of like pressure rating to the wellhead and a pressure gauge that can be monitored while drilling is performed on the other well(s).
  - b. When the operator proposes to set surface casing with Spudder Rig
    - Notify the BLM when moving in and removing the Spudder Rig.
    - Notify the BLM when moving in the 2<sup>nd</sup> Rig. Rig to be moved in within 90 days of notification that Spudder Rig has left the location.
    - BOP/BOPE test to be conducted per Onshore Oil and Gas Order No. 2 as soon as 2nd Rig is rigged up on well.
2. Floor controls are required for 3M or Greater systems. These controls will be on the rig floor, unobstructed, readily accessible to the driller and will be operational at all times during drilling and/or completion activities. Rig floor is defined as the area immediately around the rotary table; the area immediately above the substructure on which the draw works are located, this does not include the dog house or stairway area.
3. The record of the drilling rate along with the GR/N well log run from TD to surface (horizontal well – vertical portion of hole) shall be submitted to the BLM office as well as all other logs run on the borehole 30 days from completion. If available, a digital copy of the logs is to be submitted in addition to the paper copies. The Rustler top and top and bottom of Salt are to be recorded on the Completion Report.

## A. CASING

1. Changes to the approved APD casing program need prior approval if the items substituted are of lesser grade or different casing size or are Non-API. The Operator can exchange the components of the proposal with that of superior strength (i.e. changing from J-55 to N-80, or from 36# to 40#). Changes to the approved cement program need prior approval if the altered cement plan has less volume or strength or if the changes are substantial (i.e. Multistage tool, ECP, etc.). The initial wellhead installed on the well will remain on the well with spools used as needed.
2. Wait on cement (WOC) for Water Basin: After cementing but before commencing any tests, the casing string shall stand cemented under pressure until both of the following conditions have been met: 1) cement reaches a minimum compressive strength of 500 psi at the shoe, 2) until cement has been in place at least 8 hours. WOC time will be recorded in the driller's log. See individual casing strings for details regarding lead cement slurry requirements. The casing integrity test can be done (prior to the cement setting up) immediately after bumping the plug.
3. Provide compressive strengths including hours to reach required 500 pounds compressive strength prior to cementing each casing string. Have well specific cement details onsite prior to pumping the cement for each casing string.
4. No pea gravel permitted for remedial or fall back remedial without prior authorization from the BLM engineer.
5. On that portion of any well approved for a 5M BOPE system or greater, a pressure integrity test of each casing shoe shall be performed. Formation at the shoe shall be tested to a minimum of the mud weight equivalent anticipated to control the formation pressure to the next casing depth or at total depth of the well. This test shall be performed before drilling more than 20 feet of new hole.
6. If hardband drill pipe is rotated inside casing, returns will be monitored for metal. If metal is found in samples, drill pipe will be pulled and rubber protectors which have a larger diameter than the tool joints of the drill pipe will be installed prior to continuing drilling operations.

## B. PRESSURE CONTROL

1. All blowout preventer (BOP) and related equipment (BOPE) shall comply with well control requirements as described in Onshore Oil and Gas Order No. 2 and API RP 53 Sec. 17.
2. If a variance is approved for a flexible hose to be installed from the BOP to the choke manifold, the following requirements apply: The flex line must meet the requirements of API 16C. Check condition of flexible line from BOP to choke manifold, replace if exterior is damaged or if line fails test. Line to be as straight as possible with no hard bends and is to be anchored according to Manufacturer's requirements. The flexible hose can be exchanged with a hose of equal size and equal or greater pressure rating. Anchor requirements, specification sheet and hydrostatic pressure test certification matching the hose in service, to be onsite for review. These documents shall be posted in the company man's trailer and on the rig floor.
3. 5M or higher system requires an HCR valve, remote kill line and annular to match. The remote kill line is to be installed prior to testing the system and tested to stack pressure.
5. The appropriate BLM office shall be notified a minimum of 4 hours in advance for a representative to witness the tests.
  - a. In a water basin, for all casing strings utilizing slips, these are to be set as soon as the crew and rig are ready and any fallback cement remediation has been done. The casing cut-off and BOP installation can be initiated four hours after installing the slips, which will be approximately six hours after bumping the plug. For those casing strings not using slips, the minimum wait time before cut-off is eight hours after bumping the plug. BOP/BOPE testing can begin after cut-off or once cement reaches 500 psi compressive strength (including lead when specified), whichever is greater. However, if the float does not hold, cut-off cannot be initiated until cement reaches 500 psi compressive strength (including lead when specified).
  - b. The tests shall be done by an independent service company utilizing a test plug not a cup or J-packer. The operator also has the option of utilizing an independent tester to test without a plug (i.e. against the casing) pursuant to Onshore Order 2 with the pressure not to exceed 70% of the burst rating for the casing. Any test against the casing must meet the WOC time for water basin (8 hours) or potash (24 hours) or 500 pounds compressive strength, whichever is greater, prior to initiating the test (see casing segment as lead cement may be critical item).

- c. The test shall be run on a 5000 psi chart for a 2-3M BOP/BOP, on a 10000 psi chart for a 5M BOP/BOPE and on a 15000 psi chart for a 10M BOP/BOPE. If a linear chart is used, it shall be a one hour chart. A circular chart shall have a maximum 2 hour clock. If a twelve hour or twenty-four hour chart is used, tester shall make a notation that it is run with a two hour clock.
- d. The results of the test shall be reported to the appropriate BLM office.
- e. All tests are required to be recorded on a calibrated test chart. A copy of the BOP/BOPE test chart and a copy of independent service company test will be submitted to the appropriate BLM office.
- f. The BOP/BOPE test shall include a low pressure test from 250 to 300 psi. The test will be held for a minimum of 10 minutes if test is done with a test plug and 30 minutes without a test plug. This test shall be performed prior to the test at full stack pressure.
- g. BOP/BOPE must be tested by an independent service company within 500 feet of the top of the Wolfcamp formation if the time between the setting of the intermediate casing and reaching this depth exceeds 20 days. This test does not exclude the test prior to drilling out the casing shoe as per Onshore Order No. 2.

#### C. DRILLING MUD

Mud system monitoring equipment, with derrick floor indicators and visual and audio alarms, shall be operating before drilling into the Wolfcamp formation, and shall be used until production casing is run and cemented.

#### D. WASTE MATERIAL AND FLUIDS

All waste (i.e. drilling fluids, trash, salts, chemicals, sewage, gray water, etc.) created as a result of drilling operations and completion operations shall be safely contained and disposed of properly at a waste disposal facility. No waste material or fluid shall be disposed of on the well location or surrounding area.

Porto-johns and trash containers will be on-location during fracturing operations or any other crew-intensive operations.

**JAM 01292021**

**District I**  
1625 N. French Dr., Hobbs, NM 88240  
Phone:(575) 393-6161 Fax:(575) 393-0720  
**District II**  
811 S. First St., Artesia, NM 88210  
Phone:(575) 748-1283 Fax:(575) 748-9720  
**District III**  
1000 Rio Brazos Rd., Aztec, NM 87410  
Phone:(505) 334-6178 Fax:(505) 334-6170  
**District IV**  
1220 S. St Francis Dr., Santa Fe, NM 87505  
Phone:(505) 476-3470 Fax:(505) 476-3462

**State of New Mexico**  
**Energy, Minerals and Natural Resources**  
**Oil Conservation Division**  
**1220 S. St Francis Dr.**  
**Santa Fe, NM 87505**

COMMENTS

Action 18891

**COMMENTS**

Operator: XTO PERMIAN OPERATING LLC. 6401 HOLIDAY HILL ROAD BUILDING 5 MIDLAND, TX79707		OGRID: 373075	Action Number: 18891	Action Type: C-103A
Created By	Comment	Comment Date		
jagarcia	Accepted for Record	03/12/2021		
kpickford	KP GEO Review 2/26/2021	02/26/2021		

**District I**  
1625 N. French Dr., Hobbs, NM 88240  
Phone:(575) 393-6161 Fax:(575) 393-0720  
**District II**  
811 S. First St., Artesia, NM 88210  
Phone:(575) 748-1283 Fax:(575) 748-9720  
**District III**  
1000 Rio Brazos Rd., Aztec, NM 87410  
Phone:(505) 334-6178 Fax:(505) 334-6170  
**District IV**  
1220 S. St Francis Dr., Santa Fe, NM 87505  
Phone:(505) 476-3470 Fax:(505) 476-3462

**State of New Mexico**  
**Energy, Minerals and Natural Resources**  
**Oil Conservation Division**  
**1220 S. St Francis Dr.**  
**Santa Fe, NM 87505**

CONDITIONS  
  
Action 18891

**CONDITIONS OF APPROVAL**

Operator: XTO PERMIAN OPERATING LLC. 6401 HOLIDAY HILL ROAD BUILDING 5 MIDLAND, TX79707		OGRID: 373075	Action Number: 18891	Action Type: C-103A
OCD Reviewer	Condition			
kpickford	Adhere to previous NMOCD Conditions of Approval			