

Form 3160-3
(June 2015)FORM APPROVED
OMB No. 1004-0137
Expires: January 31, 2018

UNITED STATES
DEPARTMENT OF THE INTERIOR
BUREAU OF LAND MANAGEMENT
APPLICATION FOR PERMIT TO DRILL OR REENTER

1a. Type of work: <input checked="" type="checkbox"/> DRILL <input type="checkbox"/> REENTER 1b. Type of Well: <input checked="" type="checkbox"/> Oil Well <input type="checkbox"/> Gas Well <input type="checkbox"/> Other 1c. Type of Completion: <input type="checkbox"/> Hydraulic Fracturing <input checked="" type="checkbox"/> Single Zone <input type="checkbox"/> Multiple Zone		5. Lease Serial No. NMNM0001244A 6. If Indian, Allottee or Tribe Name 7. If Unit or CA Agreement, Name and No. BELL LAKE / NMNM 068292X 8. Lease Name and Well No. BELL LAKE UNIT NORTH <div style="text-align: center;">[316707]</div> 210H 9. API Well No. 30-025-48551
2. Name of Operator [12361] KAISER FRANCIS OIL COMPANY 3a. Address PO BOX 21468, TULSA, OK 74121-1468 3b. Phone No. (include area code) 		10. Field and Pool, or Exploratory [98259] OJO CHISO/WOLFCAMP, SOUTHWEST 11. Sec., T. R. M. or Blk. and Survey or Area SEC 6/T23S/R34E/NMP
4. Location of Well (Report location clearly and in accordance with any State requirements. *) At surface SWNE / 2035 FNL / 1985 FEL / LAT 32.3353097 / LONG -103.5071362 At proposed prod. zone SWSE / 100 FSL / 2290 FEL / LAT 32.3121545 / LONG -103.5080921		
14. Distance in miles and direction from nearest town or post office* 20 miles		12. County or Parish LEA 13. State NM
15. Distance from proposed* location to nearest property or lease line, ft. (Also to nearest drig. unit line, if any) 325 feet	16. No of acres in lease 634.35	17. Spacing Unit dedicated to this well 480.0
18. Distance from proposed location* to nearest well, drilling, completed, applied for, on this lease, ft. 30 feet	19. Proposed Depth 10290 feet / 18407 feet	20. BLM/BIA Bond No. in file FED: WYB000055
21. Elevations (Show whether DF, KDB, RT, GL, etc.) 3462 feet	22. Approximate date work will start* 06/01/2020	23. Estimated duration 40 days
24. Attachments		

The following, completed in accordance with the requirements of Onshore Oil and Gas Order No. 1, and the Hydraulic Fracturing rule per 43 CFR 3162.3-3 (as applicable)

- | | |
|---|---|
| 1. Well plat certified by a registered surveyor.
2. A Drilling Plan.
3. A Surface Use Plan (if the location is on National Forest System Lands, the SUPO must be filed with the appropriate Forest Service Office). | 4. Bond to cover the operations unless covered by an existing bond on file (see Item 20 above).
5. Operator certification.
6. Such other site specific information and/or plans as may be requested by the BLM. |
|---|---|

25. Signature (Electronic Submission) Title Regulatory Analyst	Name (Printed/Typed) STORMI DAVIS / Ph: (918) 491-0000	Date 02/09/2020
Approved by (Signature) (Electronic Submission) Title Assistant Field Manager Lands & Minerals	Name (Printed/Typed) Cody Layton / Ph: (575) 234-5959	Date 11/30/2020
Office Carlsbad Field Office		

Application approval does not warrant or certify that the applicant holds legal or equitable title to those rights in the subject lease which would entitle the applicant to conduct operations thereon.
 Conditions of approval, if any, are attached.

Title 18 U.S.C. Section 1001 and Title 43 U.S.C. Section 1212, make it a crime for any person knowingly and willfully to make to any department or agency of the United States any false, fictitious or fraudulent statements or representations as to any matter within its jurisdiction.

GCP Rec 03/12/2021

SL

(Continued on page 2)

APPROVED WITH CONDITIONS

Approval Date: 11/30/2020

KZ
03/12/2021

*(Instructions on page 2)

PECOS DISTRICT DRILLING CONDITIONS OF APPROVAL

OPERATOR'S NAME:	KAISER FRANCIS OIL COMPANY
LEASE NO.:	NMNM0001244A
WELL NAME & NO.:	BELL LAKE UNIT NORTH 210H
SURFACE HOLE FOOTAGE:	2035'/N & 1985'/E
BOTTOM HOLE FOOTAGE:	100'/S & 2290'/E
LOCATION:	Section 6, T.23 S., R.34 E., NMPM
COUNTY:	Lea County, New Mexico

COA

H2S	<input type="radio"/> Yes	<input checked="" type="radio"/> No	
Potash	<input checked="" type="radio"/> None	<input type="radio"/> Secretary	<input type="radio"/> R-111-P
Cave/Karst Potential	<input checked="" type="radio"/> Low	<input type="radio"/> Medium	<input type="radio"/> High
Cave/Karst Potential	<input type="radio"/> Critical		
Variance	<input type="radio"/> None	<input checked="" type="radio"/> Flex Hose	<input type="radio"/> Other
Wellhead	<input type="radio"/> Conventional	<input checked="" type="radio"/> Multibowl	<input type="radio"/> Both
Other	<input type="checkbox"/> 4 String Area	<input type="checkbox"/> Capitan Reef	<input type="checkbox"/> WIPP
Other	<input type="checkbox"/> Fluid Filled	<input type="checkbox"/> Cement Squeeze	<input type="checkbox"/> Pilot Hole
Special Requirements	<input type="checkbox"/> Water Disposal	<input type="checkbox"/> COM	<input checked="" type="checkbox"/> Unit

A. HYDROGEN SULFIDE

Hydrogen Sulfide (H2S) monitors shall be installed prior to drilling out the surface shoe. If H2S is detected in concentrations greater than 100 ppm, the Hydrogen Sulfide area shall meet Onshore Order 6 requirements, which includes equipment and personnel/public protection items. If Hydrogen Sulfide is encountered, provide measured values and formations to the BLM.

B. CASING

1. The 13-3/8 inch surface casing shall be set at approximately **1250 feet** (a minimum of 25 feet (Lea County) into the Rustler Anhydrite and above the salt) and cemented to the surface.
 - a. If cement does not circulate to the surface, the appropriate BLM office shall be notified and a temperature survey utilizing an electronic type temperature survey with surface log readout will be used or a cement bond log shall be run to verify the top of the cement. Temperature survey will be run a minimum of six hours after pumping cement and ideally between 8-10 hours after completing the cement job.
 - b. Wait on cement (WOC) time for a primary cement job will be a minimum of **8**

- hours or 500 pounds compressive strength, whichever is greater. (This is to include the lead cement)
- c. Wait on cement (WOC) time for a remedial job will be a minimum of 4 hours after bringing cement to surface or 500 pounds compressive strength, whichever is greater.
 - d. If cement falls back, remedial cementing will be done prior to drilling out that string.
2. The **9-5/8** inch intermediate casing shall be set at **4837 feet**. The minimum required fill of cement behind the **9-5/8** inch intermediate casing is:

Option 1 (Single Stage):

- Cement to surface. If cement does not circulate see B.1.a, c-d above.
Wait on cement (WOC) time for a primary cement job is to include the lead cement slurry due to cave/karst or potash.
3. The minimum required fill of cement behind the **5-1/2** inch production casing is:

Option 1 (Single Stage):

- Cement should tie-back at least **200 feet** into previous casing string. Operator shall provide method of verification.
- **Excess cement calculates to less than 25% ; More cement may be needed.**

C. PRESSURE CONTROL

1. Variance approved to use flex line from BOP to choke manifold. Manufacturer's specification to be readily available. No external damage to flex line. Flex line to be installed as straight as possible (no hard bends).
2. **BOP Requirements**

Option 1

- a. Minimum working pressure of the blowout preventer (BOP) and related equipment (BOPE) required for drilling below the surface casing shoe shall be **2000 (2M)** psi.

- b. Minimum working pressure of the blowout preventer (BOP) and related equipment (BOPE) required for drilling below the intermediate casing shoe shall be **3000 (3M) psi**.

Option 2

Operator has proposed a multi-bowl wellhead assembly. This assembly will only be tested when installed on the surface casing. Minimum working pressure of the blowout preventer (BOP) and related equipment (BOPE) required for drilling below the surface casing shoe shall be **10,000 (10M) psi**. **Variance is approved to use a 5000 (5M) Annular which shall be tested to 5000 (5M) psi.**

- a. Wellhead shall be installed by manufacturer's representatives, submit documentation with subsequent sundry.
- b. If the welding is performed by a third party, the manufacturer's representative shall monitor the temperature to verify that it does not exceed the maximum temperature of the seal.
- c. Manufacturer representative shall install the test plug for the initial BOP test.
- d. If the cement does not circulate and one inch operations would have been possible with a standard wellhead, the well head shall be cut off, cementing operations performed and another wellhead installed.
- e. Whenever any seal subject to test pressure is broken, all the tests in OOGO2.III.A.2.i must be followed.

D. SPECIAL REQUIREMENT (S)

Unit Wells

The well sign for a unit well shall include the unit number in addition to the surface and bottom hole lease numbers. This also applies to participating area numbers. If a participating area has not been established, the operator can use the general unit designation, but will replace the unit number with the participating area number when the sign is replaced.

Commercial Well Determination

A commercial well determination shall be submitted after production has been established for at least six months. (This is not necessary for secondary recovery unit wells)

GENERAL REQUIREMENTS

The BLM is to be notified in advance for a representative to witness:

- a. Spudding well (minimum of 24 hours)
- b. Setting and/or Cementing of all casing strings (minimum of 4 hours)
- c. BOPE tests (minimum of 4 hours)

☒ Eddy County

Call the Carlsbad Field Office, 620 East Greene St., Carlsbad, NM 88220,
(575) 361-2822

☒ Lea County

Call the Hobbs Field Station, 414 West Taylor, Hobbs NM 88240, (575)
393-3612

1. Unless the production casing has been run and cemented or the well has been properly plugged, the drilling rig shall not be removed from over the hole without prior approval.
 - a. In the event the operator has proposed to drill multiple wells utilizing a skid/walking rig. Operator shall secure the wellbore on the current well, after installing and testing the wellhead, by installing a blind flange of like pressure rating to the wellhead and a pressure gauge that can be monitored while drilling is performed on the other well(s).
 - b. When the operator proposes to set surface casing with Spudder Rig
 - Notify the BLM when moving in and removing the Spudder Rig.
 - Notify the BLM when moving in the 2nd Rig. Rig to be moved in within 90 days of notification that Spudder Rig has left the location.
 - BOP/BOPE test to be conducted per Onshore Oil and Gas Order No. 2 as soon as 2nd Rig is rigged up on well.
2. Floor controls are required for 3M or Greater systems. These controls will be on the rig floor, unobstructed, readily accessible to the driller and will be operational at all times during drilling and/or completion activities. Rig floor is defined as the area immediately around the rotary table; the area immediately above the substructure on

which the draw works are located, this does not include the dog house or stairway area.

3. The record of the drilling rate along with the GR/N well log run from TD to surface (horizontal well – vertical portion of hole) shall be submitted to the BLM office as well as all other logs run on the borehole 30 days from completion. If available, a digital copy of the logs is to be submitted in addition to the paper copies. The Rustler top and top and bottom of Salt are to be recorded on the Completion Report.

A. CASING

1. Changes to the approved APD casing program need prior approval if the items substituted are of lesser grade or different casing size or are Non-API. The Operator can exchange the components of the proposal with that of superior strength (i.e. changing from J-55 to N-80, or from 36# to 40#). Changes to the approved cement program need prior approval if the altered cement plan has less volume or strength or if the changes are substantial (i.e. Multistage tool, ECP, etc.). The initial wellhead installed on the well will remain on the well with spools used as needed.
2. Wait on cement (WOC) for Potash Areas: After cementing but before commencing any tests, the casing string shall stand cemented under pressure until both of the following conditions have been met: 1) cement reaches a minimum compressive strength of 500 psi for all cement blends, 2) until cement has been in place at least 24 hours. WOC time will be recorded in the driller's log. The casing integrity test can be done (prior to the cement setting up) immediately after bumping the plug.
3. Wait on cement (WOC) for Water Basin: After cementing but before commencing any tests, the casing string shall stand cemented under pressure until both of the following conditions have been met: 1) cement reaches a minimum compressive strength of 500 psi at the shoe, 2) until cement has been in place at least 8 hours. WOC time will be recorded in the driller's log. See individual casing strings for details regarding lead cement slurry requirements. The casing integrity test can be done (prior to the cement setting up) immediately after bumping the plug.
4. Provide compressive strengths including hours to reach required 500 pounds compressive strength prior to cementing each casing string. Have well specific cement details onsite prior to pumping the cement for each casing string.
5. No pea gravel permitted for remedial or fall back remedial without prior authorization from the BLM engineer.
6. On that portion of any well approved for a 5M BOPE system or greater, a pressure integrity test of each casing shoe shall be performed. Formation at the shoe shall be tested to a minimum of the mud weight equivalent anticipated to control the formation pressure to the next casing depth or at total depth of the well. This test shall be performed before drilling more than 20 feet of new hole.

7. If hardband drill pipe is rotated inside casing, returns will be monitored for metal. If metal is found in samples, drill pipe will be pulled and rubber protectors which have a larger diameter than the tool joints of the drill pipe will be installed prior to continuing drilling operations.
8. Whenever a casing string is cemented in the R-111-P potash area, the NMOCD requirements shall be followed.

B. PRESSURE CONTROL

1. All blowout preventer (BOP) and related equipment (BOPE) shall comply with well control requirements as described in Onshore Oil and Gas Order No. 2 and API RP 53 Sec. 17.
2. If a variance is approved for a flexible hose to be installed from the BOP to the choke manifold, the following requirements apply: The flex line must meet the requirements of API 16C. Check condition of flexible line from BOP to choke manifold, replace if exterior is damaged or if line fails test. Line to be as straight as possible with no hard bends and is to be anchored according to Manufacturer's requirements. The flexible hose can be exchanged with a hose of equal size and equal or greater pressure rating. Anchor requirements, specification sheet and hydrostatic pressure test certification matching the hose in service, to be onsite for review. These documents shall be posted in the company man's trailer and on the rig floor.
3. 5M or higher system requires an HCR valve, remote kill line and annular to match. The remote kill line is to be installed prior to testing the system and tested to stack pressure.
4. If the operator has proposed a multi-bowl wellhead assembly in the APD. The following requirements must be met:
 - a. Wellhead shall be installed by manufacturer's representatives, submit documentation with subsequent sundry.
 - b. If the welding is performed by a third party, the manufacturer's representative shall monitor the temperature to verify that it does not exceed the maximum temperature of the seal.
 - c. Manufacturer representative shall install the test plug for the initial BOP test.
 - d. Whenever any seal subject to test pressure is broken, all the tests in OOGO2.III.A.2.i must be followed.
 - e. If the cement does not circulate and one inch operations would have been possible with a standard wellhead, the well head shall be cut off, cementing operations performed and another wellhead installed.

5. The appropriate BLM office shall be notified a minimum of 4 hours in advance for a representative to witness the tests.
- a. In a water basin, for all casing strings utilizing slips, these are to be set as soon as the crew and rig are ready and any fallback cement remediation has been done. The casing cut-off and BOP installation can be initiated four hours after installing the slips, which will be approximately six hours after bumping the plug. For those casing strings not using slips, the minimum wait time before cut-off is eight hours after bumping the plug. BOP/BOPE testing can begin after cut-off or once cement reaches 500 psi compressive strength (including lead when specified), whichever is greater. However, if the float does not hold, cut-off cannot be initiated until cement reaches 500 psi compressive strength (including lead when specified).
 - b. In potash areas, for all casing strings utilizing slips, these are to be set as soon as the crew and rig are ready and any fallback cement remediation has been done. For all casing strings, casing cut-off and BOP installation can be initiated at twelve hours after bumping the plug. However, **no tests** shall commence until the cement has had a minimum of 24 hours setup time, except the casing pressure test can be initiated immediately after bumping the plug (only applies to single stage cement jobs).
 - c. The tests shall be done by an independent service company utilizing a test plug not a cup or J-packer. The operator also has the option of utilizing an independent tester to test without a plug (i.e. against the casing) pursuant to Onshore Order 2 with the pressure not to exceed 70% of the burst rating for the casing. Any test against the casing must meet the WOC time for water basin (8 hours) or potash (24 hours) or 500 pounds compressive strength, whichever is greater, prior to initiating the test (see casing segment as lead cement may be critical item).
 - d. The test shall be run on a 5000 psi chart for a 2-3M BOP/BOP, on a 10000 psi chart for a 5M BOP/BOPE and on a 15000 psi chart for a 10M BOP/BOPE. If a linear chart is used, it shall be a one hour chart. A circular chart shall have a maximum 2 hour clock. If a twelve hour or twenty-four hour chart is used, tester shall make a notation that it is run with a two hour clock.
 - e. The results of the test shall be reported to the appropriate BLM office.
 - f. All tests are required to be recorded on a calibrated test chart. A copy of the BOP/BOPE test chart and a copy of independent service company test will be submitted to the appropriate BLM office.
 - g. The BOP/BOPE test shall include a low pressure test from 250 to 300 psi. The test will be held for a minimum of 10 minutes if test is done with a test plug and 30 minutes without a test plug. This test shall be performed prior to

the test at full stack pressure.

- h. BOP/BOPE must be tested by an independent service company within 500 feet of the top of the Wolfcamp formation if the time between the setting of the intermediate casing and reaching this depth exceeds 20 days. This test does not exclude the test prior to drilling out the casing shoe as per Onshore Order No. 2.

C. DRILLING MUD

Mud system monitoring equipment, with derrick floor indicators and visual and audio alarms, shall be operating before drilling into the Wolfcamp formation, and shall be used until production casing is run and cemented.

D. WASTE MATERIAL AND FLUIDS

All waste (i.e. drilling fluids, trash, salts, chemicals, sewage, gray water, etc.) created as a result of drilling operations and completion operations shall be safely contained and disposed of properly at a waste disposal facility. No waste material or fluid shall be disposed of on the well location or surrounding area.

Porto-johns and trash containers will be on-location during fracturing operations or any other crew-intensive operations.

RI11252020



U.S. Department of the Interior
BUREAU OF LAND MANAGEMENT

Application Data Report

11/30/2020

APD ID: 10400054105

Submission Date: 02/09/2020

Highlighted data
reflects the most
recent changes

Operator Name: KAISER FRANCIS OIL COMPANY

Well Name: BELL LAKE UNIT NORTH

Well Number: 210H

[Show Final Text](#)

Well Type: OIL WELL

Well Work Type: Drill

Section 1 - General

APD ID: 10400054105

Tie to previous NOS? N

Submission Date: 02/09/2020

BLM Office: CARLSBAD

User: Stormi Davis

Title: Regulatory Analyst

Federal/Indian APD: FED

Is the first lease penetrated for production Federal or Indian? FED

Lease number: NMNM0001244A

Lease Acres: 634.35

Surface access agreement in place?

Allotted?

Reservation:

Agreement in place? YES

Federal or Indian agreement: FEDERAL

Agreement number: NMNM068292X

Agreement name: BELL LAKE

Keep application confidential? Y

Permitting Agent? YES

APD Operator: KAISER FRANCIS OIL COMPANY

Operator letter of designation:

Operator Info

Operator Organization Name: KAISER FRANCIS OIL COMPANY

Operator Address: 6733 S. Yale Ave.

Operator PO Box: PO Box 21468

Zip: 74121

Operator City: Tulsa

State: OK

Operator Phone: (918)491-0000

Operator Internet Address:

Section 2 - Well Information

Well in Master Development Plan? NO

Master Development Plan name:

Well in Master SUPO? NO

Master SUPO name:

Well in Master Drilling Plan? NO

Master Drilling Plan name:

Well Name: BELL LAKE UNIT NORTH

Well Number: 210H

Well API Number:

Field/Pool or Exploratory? Field and Pool

Field Name: OJO CHISO

Pool Name: WOLFCAMP,
SOUTHWEST

Is the proposed well in an area containing other mineral resources? NATURAL GAS,OIL

Operator Name: KAISER FRANCIS OIL COMPANY**Well Name:** BELL LAKE UNIT NORTH**Well Number:** 210H**Is the proposed well in an area containing other mineral resources?** NATURAL GAS,OIL**Is the proposed well in a Helium production area?** N**Use Existing Well Pad?** N**New surface disturbance?****Type of Well Pad:** MULTIPLE WELL**Multiple Well Pad Name:****Number:** 8**Well Class:** HORIZONTAL**NORTH BELL LAKE UNIT****Number of Legs:** 1**Well Work Type:** Drill**Well Type:** OIL WELL**Describe Well Type:****Well sub-Type:** EXPLORATORY (WILDCAT)**Describe sub-type:****Distance to town:** 20 Miles**Distance to nearest well:** 30 FT**Distance to lease line:** 325 FT**Reservoir well spacing assigned acres Measurement:** 480 Acres**Well plat:** BLUN_210H_C102_20200209125319.pdf

Pay.gov_20200209131348.pdf

Well work start Date: 06/01/2020**Duration:** 40 DAYS**Section 3 - Well Location Table****Survey Type:** RECTANGULAR**Describe Survey Type:****Datum:** NAD83**Vertical Datum:** NAVD88**Survey number:** 7647A**Reference Datum:** GROUND LEVEL

Wellbore	NS-Foot	NS Indicator	EW-Foot	EW Indicator	Twsp	Range	Section	Aliquot/Lot/Tract	Latitude	Longitude	County	State	Meridian	Lease Type	Lease Number	Elevation	MD	TVD	Will this well produce from this lease?
SHL Leg #1	2035	FNL	1985	FEL	23S	34E	6	Aliquot SWNE	32.3353097	-103.5071362	LEA	NEW MEXI CO	NEW MEXI CO	F	NMNM 0000587	3462	0	0	N
KOP Leg #1	2035	FNL	1985	FEL	23S	34E	6	Aliquot SWNE	32.3353097	-103.5071362	LEA	NEW MEXI CO	NEW MEXI CO	F	NMNM 0000587	6255	9729	9717	N

Operator Name: KAISER FRANCIS OIL COMPANY**Well Name:** BELL LAKE UNIT NORTH**Well Number:** 210H

Wellbore	NS-Foot	NS Indicator	EW-Foot	EW Indicator	Twsp	Range	Section	Aliquot/Lot/Tract	Latitude	Longitude	County	State	Meridian	Lease Type	Lease Number	Elevation	MD	TVD	Will this well produce from this lease?
PPP Leg #1-1	2640	FSL	2200	FEL	23S	34E	7	Aliquot NWSE	32.3191305	-103.5080076	LEA	NEW MEXICO	NEW MEXICO	S	STATE	-6828	15869	10290	Y
PPP Leg #1-2	0	FNL	2200	FEL	23S	34E	7	Aliquot NWNE	32.3263864	-103.5079201	LEA	NEW MEXICO	NEW MEXICO	F	NMLC065194	-6828	13229	10290	Y
PPP Leg #1-3	2600	FSL	2200	FEL	23S	34E	6	Aliquot NWSE	32.333532	-103.5078328	LEA	NEW MEXICO	NEW MEXICO	F	NMNM0001244A	-6828	10629	10290	Y
PPP Leg #1-4	2640	FSL	2200	FEL	23S	34E	6	Aliquot NWSE	32.3336407	-103.5078316	LEA	NEW MEXICO	NEW MEXICO	F	NMNM0001244A	-6825	10589	10287	Y
EXIT Leg #1	100	FSL	2290	FEL	23S	34E	7	Aliquot SWSE	32.3121545	-103.5080921	LEA	NEW MEXICO	NEW MEXICO	S	STATE	-6828	18407	10290	Y
BHL Leg #1	100	FSL	2290	FEL	23S	34E	7	Aliquot SWSE	32.3121545	-103.5080921	LEA	NEW MEXICO	NEW MEXICO	S	STATE	-6828	18407	10290	Y



Melanie Wilson <nmogrservices@gmail.com>

Pay.gov Payment Confirmation: BLM Oil and Gas Online Payment

1 message

notification@pay.gov <notification@pay.gov>
To: nmogrservices@gmail.com

Sun, Feb 9, 2020 at 1:12 PM



An official email of the United States government



Your payment has been submitted to Pay.gov and the details are below. If you have any questions regarding this payment, please contact BLM OC CBS Customer Service at (303) 236-6795 or BLM_OC_CBS_Customer_Service@blm.gov.

Application Name: BLM Oil and Gas Online Payment
Pay.gov Tracking ID: 26NE4SCJ
Agency Tracking ID: 75948595725
Transaction Type: Sale
Transaction Date: 02/09/2020 03:12:38 PM EST
Account Holder Name: George B Kaiser
Transaction Amount: \$10,230.00
Card Type: Visa
Card Number: *****0061

Company: Kaiser-Francis Oil Company
APD IDs: 10400054105
Lease Numbers: NMNM0001244A
Well Numbers: 210H

Note: You will need your Pay.gov Tracking ID to complete your APD transaction in AFMSS II. Please ensure you write this number down upon completion of payment.

THIS IS AN AUTOMATED MESSAGE. PLEASE DO NOT REPLY.



Pay.gov is a program of the U.S. Department of the Treasury, Bureau of the Fiscal Service



U.S. Department of the Interior
BUREAU OF LAND MANAGEMENT

Drilling Plan Data Report

11/30/2020

APD ID: 10400054105

Submission Date: 02/09/2020

Highlighted data
reflects the most
recent changes

Operator Name: KAISER FRANCIS OIL COMPANY

Well Name: BELL LAKE UNIT NORTH

Well Number: 210H

[Show Final Text](#)

Well Type: OIL WELL

Well Work Type: Drill

Section 1 - Geologic Formations

Formation ID	Formation Name	Elevation	True Vertical Depth	Measured Depth	Lithologies	Mineral Resources	Producing Formation
657224	---	3462	0	0	OTHER : Surface	NONE	N
657225	RUSTLER	2312	1150	1150	SANDSTONE	NONE	N
657226	SALADO	2012	1450	1450	SALT	NONE	N
657227	TOP SALT	1712	1750	1750	SALT	NONE	N
657228	BASE OF SALT	-1078	4540	4540	SALT	NONE	N
657229	LAMAR	-1363	4825	4825	SANDSTONE	NATURAL GAS, OIL	N
657230	BELL CANYON	-1688	5150	5150	SANDSTONE	NATURAL GAS, OIL	N
657231	CHERRY CANYON	-2913	6375	6375	SANDSTONE	NATURAL GAS, OIL	N
657232	BRUSHY CANYON	-4538	8000	8000	SANDSTONE	NATURAL GAS, OIL	N
657233	BONE SPRING	-4813	8275	8275	LIMESTONE	NATURAL GAS, OIL	N
657234	AVALON SAND	-5173	8635	8635	SANDSTONE	NATURAL GAS, OIL	N
657235	BONE SPRING 1ST	-6113	9575	9575	SANDSTONE	NATURAL GAS, OIL	N
657242	BONE SPRING 2ND	-6628	10090	10090	SANDSTONE	NATURAL GAS, OIL	Y

Section 2 - Blowout Prevention

Operator Name: KAISER FRANCIS OIL COMPANY**Well Name:** BELL LAKE UNIT NORTH**Well Number:** 210H**Pressure Rating (PSI):** 5M**Rating Depth:** 13000

Equipment: A 5M system will be installed according to Onshore Order #2 consisting of an Annular Preventer, BOP with two rams, a blind ram and safety valves and appropriate handles located on the rig floor. BOP will be equipped with 2 side outlets (choke side shall be a minimum 3 line, and kill side will be a minimum 2 line). Kill line will be installed with (2) valves and a check valve (2 min) of proper pressure rating for the system. Remote kill line (2 min) will be installed and ran to the outer edge of the substructure and be unobstructed. A manual and hydraulic valve (3 min) will be installed on the choke line, 3 chokes will be used with one being remotely controlled. Fill up line will be installed above the uppermost preventer. Pressure gauge of proper pressure rating will be installed on choke manifold. Upper and lower kelly cocks will be utilized with handles readily available in plain sight. A float sub will be available at all times. All connections subject to well pressure will be flanged, welded, or clamped.

Requesting Variance? YES**Variance request:** Flex Hose Variance MultiBowl Wellhead

Testing Procedure: BOP/BOPE will be tested by an independent service company to 250 psi low and the high pressure indicated above per Onshore Order 2 requirements. The System may be upgraded to a higher pressure but still tested to the working pressure listed in the table above. If the system is upgraded all of the components installed will be functional and tested.

Choke Diagram Attachment:

BLUN_210H_Choke_Manifold_20200209125829.pdf

BOP Diagram Attachment:

Cactus_Flex_Hose_16C_Certification_20200206080210.pdf

BLUN_210H_BOP_20200209125855.pdf

BLUN_210H_Wellhead_20200209125855.pdf

Section 3 - Casing

Casing ID	String Type	Hole Size	Csg Size	Condition	Standard	Tapered String	Top Set MD	Bottom Set MD	Top Set TVD	Bottom Set TVD	Top Set MSL	Bottom Set MSL	Calculated casing length MD	Grade	Weight	Joint Type	Collapse SF	Burst SF	Joint SF Type	Joint SF	Body SF Type	Body SF
1	SURFACE	17.5	13.375	NEW	API	N	0	1200	0	1200	3462	2262	1200	J-55	54.5	BUTT	2	4.9	DRY	13.9	DRY	13
2	INTERMEDIATE	12.25	9.625	NEW	API	N	0	4837	0	4825		-1363	4837	HCP-110	40	LT&C	1.9	3.5	DRY	6.6	DRY	6.5
3	PRODUCTION	8.75	5.5	NEW	API	N	0	18407	0	10290		-6828	18407	P-110	20	OTHER - GBCD	2.3	2.7	DRY	3.2	DRY	3.1

Casing Attachments

Operator Name: KAISER FRANCIS OIL COMPANY**Well Name:** BELL LAKE UNIT NORTH**Well Number:** 210H**Casing Attachments**

Casing ID: 1 **String Type:** SURFACE**Inspection Document:****Spec Document:****Tapered String Spec:****Casing Design Assumptions and Worksheet(s):**BLUN_210H_Casing_Assumptions_20200209130324.pdf

Casing ID: 2 **String Type:** INTERMEDIATE**Inspection Document:****Spec Document:****Tapered String Spec:****Casing Design Assumptions and Worksheet(s):**BLUN_210H_Casing_Assumptions_20200209130227.pdf

Casing ID: 3 **String Type:** PRODUCTION**Inspection Document:****Spec Document:****Tapered String Spec:****Casing Design Assumptions and Worksheet(s):**

GBCD_5.5in_Connection_Spec_Sheet_20200124075519.pdf

BLUN_210H_Casing_Assumptions_20200209130305.pdf

Section 4 - Cement

Operator Name: KAISER FRANCIS OIL COMPANY

Well Name: BELL LAKE UNIT NORTH

Well Number: 210H

String Type	Lead/Tail	Stage Tool Depth	Top MD	Bottom MD	Quantity(sx)	Yield	Density	Cu Ft	Excess%	Cement type	Additives
SURFACE	Lead		0	1200	700	1.7	13.5	1223	75	HALCEM	4% Bentonite
SURFACE	Tail		0	1200	248	1.3	14.8	331	75	Halcem	0.125 #/sk Poly Flake
INTERMEDIATE	Lead		0	4837	787	2.08	12.5	1644	50	EconoCem	3#/sk Kol Seal
INTERMEDIATE	Tail		0	4872	472	1.3	14.8	628	50	Halcem	none
PRODUCTION	Lead		4000	1840 7	397	3.5	10.5	1386	10	NeoCem	2#/sk Kol Seal
PRODUCTION	Tail		4000	1840 7	1835	1.2	14.5	2245	10	Versacem	none

Section 5 - Circulating Medium

Mud System Type: Closed

Will an air or gas system be Used? NO

Description of the equipment for the circulating system in accordance with Onshore Order #2:

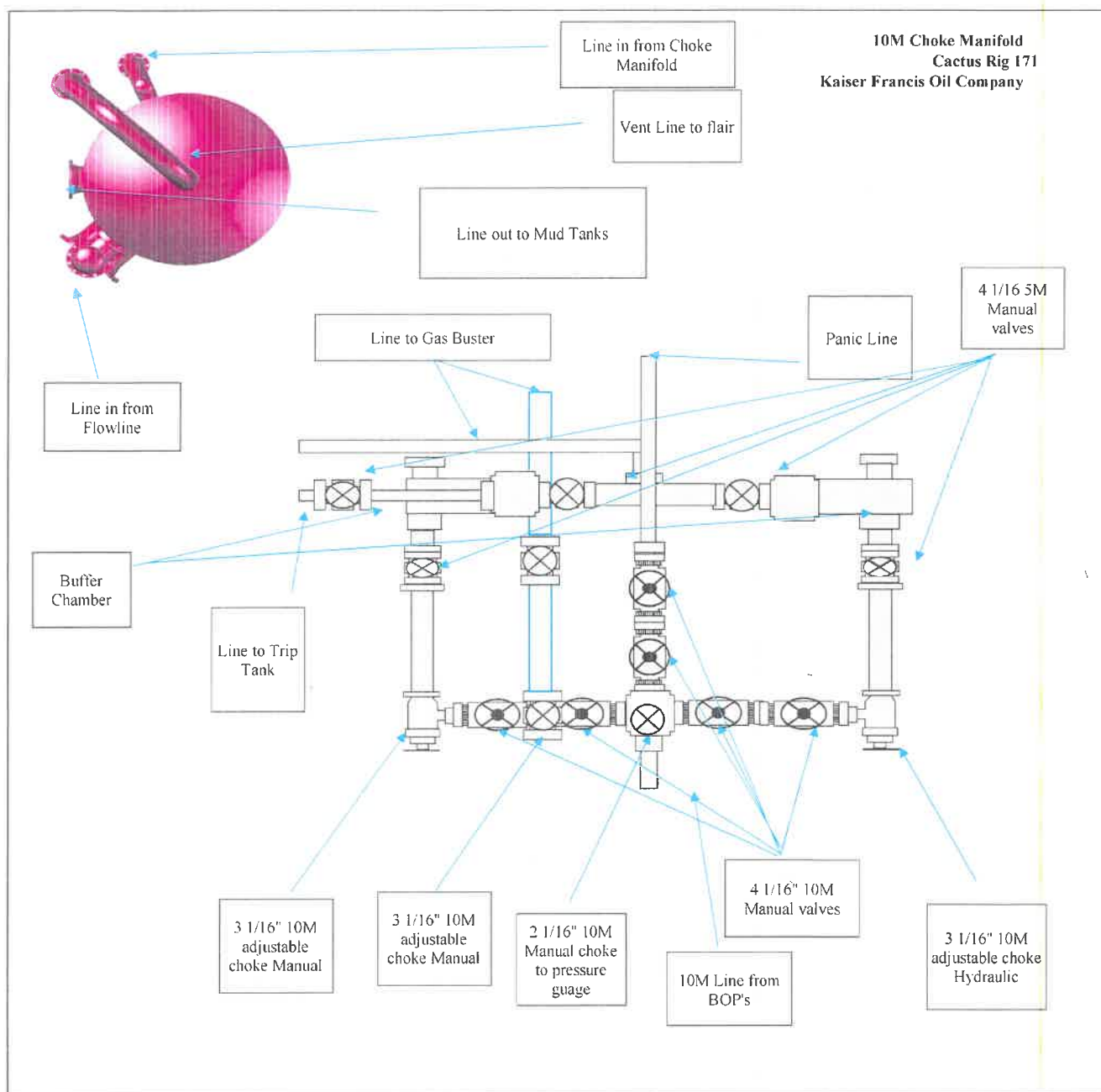
Diagram of the equipment for the circulating system in accordance with Onshore Order #2:

Describe what will be on location to control well or mitigate other conditions: Sufficient mud materials to maintain mud properties and meet minimum lost circulation and weight increase requirements will be kept on location at all time.

Describe the mud monitoring system utilized: PVT/Pason/Visual Monitoring

Circulating Medium Table

Top Depth	Bottom Depth	Mud Type	Min Weight (lbs/gal)	Max Weight (lbs/gal)	Density (lbs/cu ft)	Gel Strength (lbs/100 sqft)	PH	Viscosity (CP)	Salinity (ppm)	Filtration (cc)	Additional Characteristics
4825	10290	OIL-BASED MUD	8.7	8.9							
1200	4825	OTHER : Diesel-Brine Emulsion	8.7	8.9							
0	1200	OTHER : Fresh Water	8.4	9							

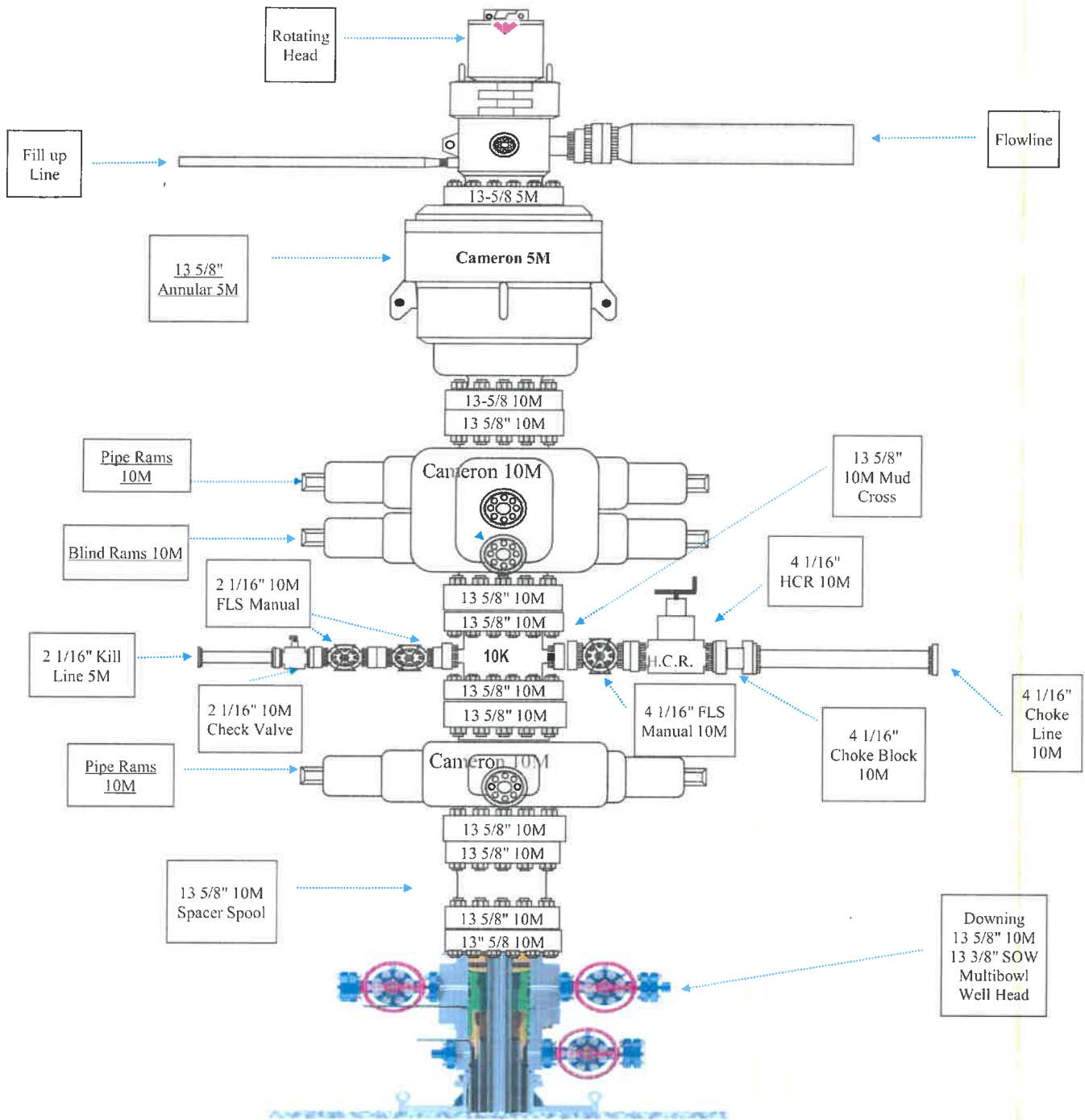


Cactus Rig 171
10M BOP with 5M Annular
Kaiser Francis Oil Company

Hole Sections Utilized

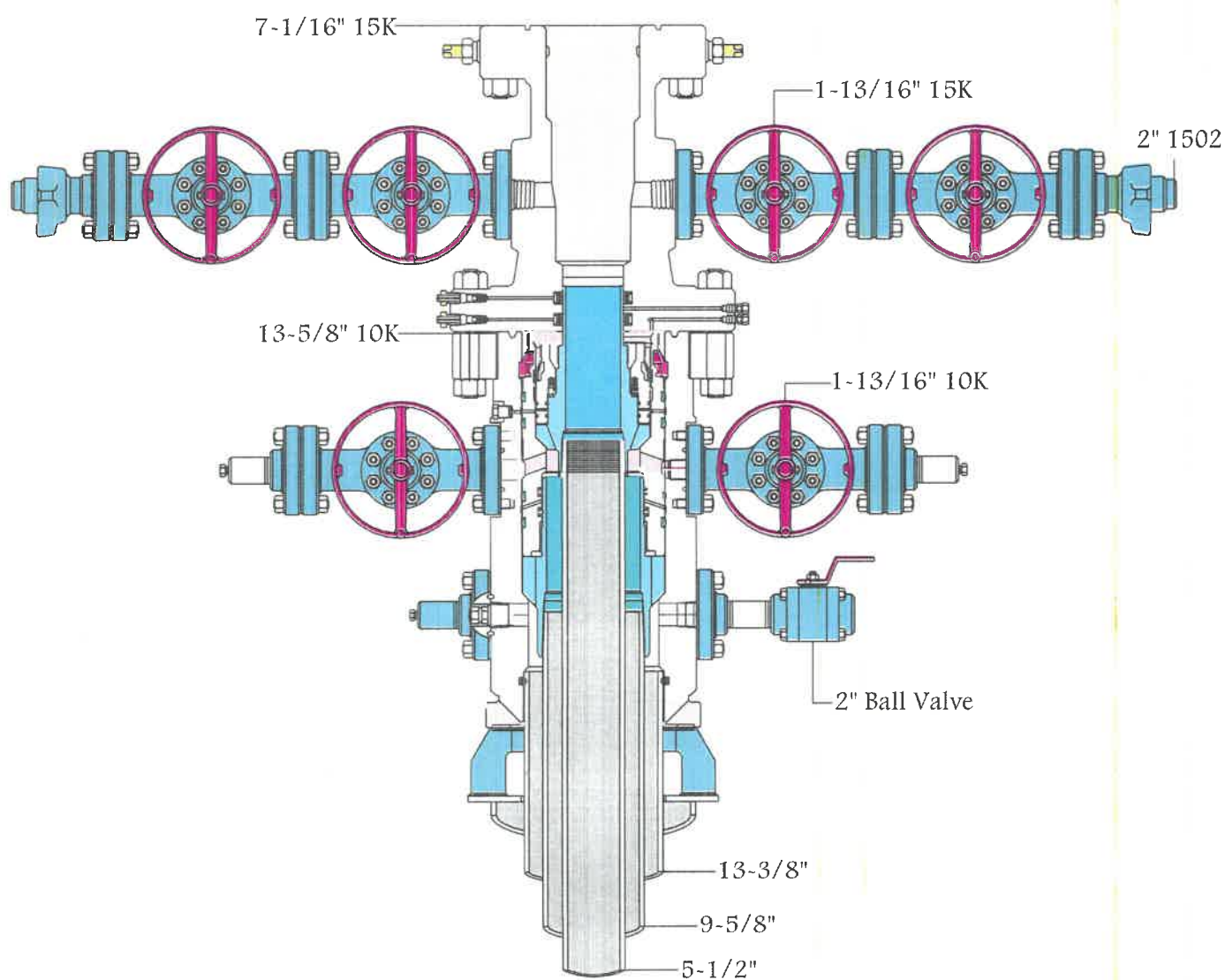
*12 1/4" Hole below Surface Casing

*8 3/4"-8 1/2" Hole below Intermediate casing





13-5/8" 10K MN-DS



RKI

Drawing #: 1537083-C

Date: 12-11-17

Drawing by: Brandon

Kaiser-Francis Oil
Company Bell Lake
Unit North 210H
Casing Assumptions

Interval	Length	Casing Size	Weight (#/ft)	Grade	Thread	Condition	Hole Size	TVD (ft)	Mud Type	Mud Weight Hole Control	Viscosity	Fluid Loss	Anticipated Mud Weight (ppg)	Max Pore Pressure (psi)	Collapse (psi)	Burst (psi)	Body Tensile Strength	Joint Tensile Strength	Collapse Safety Factor (Min 1.1)	Burst Safety Factor (Min 1.0)	Body Tensile Safety Factor (Min 1.8)	Joint Tensile Safety Factor (Min 1.8)
Conductor	120'	20"				New		120														
Surface	1200	13-3/8"	54.5	J-55	BTC	New	17-1/2"	1200	FW	8.4 - 9.0	32 - 34	NC	9	562	1130	2730	853000	909000	2.0	4.9	13.0	13.9
Intermediate	4837	9-5/8"	40	HCP-110	LTC	New	12-1/4"	4825	DBE	8.7 - 8.9	28	NC	8.9	2233	4230	7900	1260000	1266000	1.9	3.5	6.5	6.6
Production	18407	5-1/2"	20	P110	GBCD	New	8-3/4"	10290	OBM	8.7 - 8.9	28-29	NC	8.9	4762	11100	12640	641000	667000	2.3	2.7	3.1	3.2

**KAISER-FRANCIS OIL COMPANY
HYDROGEN SULFIDE (H₂S) CONTINGENCY PLAN
FOR DRILLING/COMPLETION WORKOVER/FACILITY**

**Bell Lake Unit North
SECTION 1 -T23S-R33E
SECTION 6 -T23S-R34E
SECTION 5 -T23S-R34E**

LEA COUNTY, NM

This well/facility is not expected to have H₂S, but due to the sensitive location, the following is submitted as requested.

TABLE OF CONTENTS

Emergency Response Activation and General Responsibilities	3
Individual Responsibilities During An H ₂ S Release	4
Procedure For Igniting An Uncontrollable Condition	5
Emergency Phone Numbers	6
Protection Of The General Public/Roe	7
Characteristics Of H ₂ S And SO ₂	8
Training	8
Public Relations	8
Maps	

EMERGENCY RESPONSE ACTIVATION AND GENERAL RESPONSIBILITIES

Activation of the Emergency Action Plan

In the event of any emergency situation, all personnel on location should first ensure that the following items are initiated. After that, they should refer to the appropriate Specific Emergency Guidance sections below for further responsibilities:

1. Notify the senior ranking contract representative on site.
2. Notify Kaiser-Francis representative in charge.
3. Notify civil authorities if the Kaiser-Francis Representative cannot be contacted and the situation dictates.
4. Perform rescue and first aid as required (without jeopardizing additional personnel).

General Responsibilities

In the event of an H₂S emergency, the following plan will be initiated.

- 1) All personnel will immediately evacuate to an up-wind and if possible up-hill "safe area".
- 2) If for any reason a person must enter the hazardous area, they must wear a SCBA (Self contained breathing apparatus).
- 3) Always use the "buddy system".
- 4) Isolate the well/problem if possible.
- 5) Account for all personnel
- 6) Display the proper colors, warning all unsuspecting personnel of the danger at hand
- 7) Contact the Company personnel as soon as possible if not at the location. (use the enclosed call list as instructed)

At this point the company representative will evaluate the situation and coordinate the necessary duties to bring the situation under control, and if necessary, the notification of emergency response agencies and residents.

INDIVIDUAL RESPONSIBILITIES DURING AN H₂S RELEASE

The following procedures and responsibilities will be implemented on activation of the H₂S siren and lights.

All Personnel:

1. On alarm, don escape unit (if available) and report to upwind briefing area.

Rig Manager/Tool Pusher:

1. Check that all personnel are accounted for and their condition.
2. Administer or arrange for first aid treatment, and/or call EMTs as needed.
3. Identify two people best suited to secure well and perform rescue, and instruct them to don SCBA.
4. Notify Contract management and Kaiser-Francis Representative.
5. Remain at the briefing area, assess and monitor personnel and overall situation for hazards or conditions that might warrant a change in the action plan.

Two People Responsible for Shut-in and Rescue:

1. Don SCBA and acquire tools to secure well and perform rescue, i.e., wrenches, retrieval ropes, etc.
2. Utilize the buddy system to secure well and perform rescue(s).
3. Return to the briefing area and stand by for further instructions.

All Other Personnel:

1. Isolate the area and prevent entry by other persons into the 100 ppm ROE. Additionally the first responder(s) must evacuate any public places encompassed by the 100 ppm ROE. First responder(s) must take care not to injure themselves during this operation. Company and/or local officials must be contacted to aid in this operation. Evacuation of the public should be beyond the 100 ppm ROE.

Kaiser-Francis Oil Company Representative:

1. Remain at the briefing area, assess and monitor personnel and overall situation for hazards or conditions that might warrant a change in the action plan.
2. Notify company management or Local Incident Commander, and Police, Fire Department, or other local emergency services as required.

PROCEDURE FOR IGNITING AN UNCONTROLLABLE CONDITION:

Should control of the well be considered lost and ignition considered, take care to protect against exposure to Sulfur Dioxide (SO₂). Intentional ignition must be coordinated with the NMOCD and local officials. Additionally the NM State Police shall be the Incident Command of any major release.

The decision to ignite a well should be a last resort and one if not both of the following pertain.

- 1) Human life and/or property are in danger.
- 2) There is no hope of bringing the situation under control with the prevailing conditions at the site.

INSTRUCTIONS FOR IGNITION:

- 1) Two people are required. They must be equipped with positive pressure; self contained breathing apparatus and a "D"-ring style, full body, OSHA approved safety harness. Non-flammable rope will be attached.
- 2) One of the people will be a qualified safety person who will test the atmosphere for H₂S, Oxygen, & LFL. The other person will be the company supervisor; he is responsible for igniting the well.
- 3) Ignite up-wind from a distance no closer than necessary. Make sure that where you ignite from has the maximum escape avenue available. A 25mm flare gun shall be used, with a +/-500' range to ignite the gas.
- 4) Prior to ignition, make a final check for combustible gases.
- 5) Following ignition, continue with the emergency actions & procedures as before.

CONTACTING AUTHORITIES

Kaiser-Francis personnel must liaison with local and state agencies to ensure a proper response to a major release. Additionally, the OCD must be notified of the release as soon as possible but no later than 4 hours. Agencies will ask for information such as type and volume of release, wind direction, location of release, etc. Be prepared with all information available. The following call list of essential and potential responders has been prepared for use during a release. This response plan must be in coordination with the State of New Mexico's 'Hazardous Materials Emergency Response Plan' (HMER).

EMERGENCY CALL LIST: (Start and continue until ONE of these people have been reached)

	<u>OFFICE</u>	<u>MOBILE</u>
Kaiser-Francis Oil Co.	918/494-0000	
Bill Wilkinson	580/668-2335	580/221-4637
David Zerger	918/491-4350	918/557-6708
Charles Lock	918/491-4337	918/671-6510
Stuart Blake	918/491-4347	918/510-4126
Robert Sanford	918/491-4201	918/770-2682
Eric Hansen	918/491-4339	918/527-5260

EMERGENCY RESPONSE NUMBERS: Lea County, New Mexico

State Police – Artesia	575/748-9718
State Police – Hobbs	575/392-5580
State Police – Carlsbad	575/885-3138
Lea County Sheriff - Lovington	575/396-3611
Local Emergency Planning Center – Lea County	575/396-8607
Local Emergency Planning Center – Eddy County	575/885-3581
Fire Fighting, Rescue & Ambulance – Carlsbad	911 or 575/885-3125
Fire Fighting, Rescue & Ambulance – Hobbs	911 or 575/397-9308
Fire Fighting – Jal Volunteer Fire Department	911 or 505/395-2221
New Mexico Oil & Gas Commission – Artesia	575/748-1283
New Mexico Oil & Gas Commission – Hobbs	575/393-6161
Air Medical Transport Services – Hobbs	800/550-1025
Med Flight Air Ambulance – Albuquerque	505/842-4433
Angel MedFlight	844/553-9033
DXP	432/580-3770
BJ Services	575/392-5556
Halliburton	575/392-6531 800/844-8451

PROTECTION OF THE GENERAL PUBLIC/ROE:

In the event of a release with a concentration greater than 100 ppm H₂S, the ROE (Radius of Exposure) calculations will be done to determine if the following conditions have been met:

- Does the 100 ppm ROE include any public area (any place not associated with this site)
- Does the 500 ppm ROE include any public road (any road which the general public may travel)
- Is the 100 ppm ROE equal to or greater than 3000 feet

If any one of these conditions have been met then the Contingency Plan will be implemented. The following shows how to calculate the radius of exposure and an example.

Calculation for the 100 ppm ROE:

$$X = [(1.589)(\text{concentration})(Q)]^{(0.6258)} \quad (\text{H}_2\text{S concentrations in decimal form})$$

10,000 ppm +=1.+

1,000 ppm +=.1+

100 ppm +=.01+

10 ppm +=.001+

Calculation for the 500 ppm ROE:

$$X+[(0.4546)(\text{concentration})(Q)]^{(0.6258)}$$

EXAMPLE: If a well/facility has been determined to have 150 ppm H₂S in the gas mixture and the well/facility is producing at a gas rate of 200 MCFPD then:

$$\text{ROE for 100 PPM} \quad X=[(1.589)(.0150)(200)]^{(0.6258)}$$

$$X=2.65'$$

$$\text{ROE for 500 PPM} \quad X=[(.4546)(.0150)(200)]^{(0.6258)}$$

$$X=1.2'$$

(These calculations will be forwarded to the appropriate District NMOCD office when applicable.)

PUBLIC EVACUATION PLAN:

(When the supervisor has determined that the General Public will be involved, the following plan will be implemented)

- 1) Notification of the emergency response agencies of the hazardous condition and Implement evacuation procedures.
- 2) A trained person in H₂S safety, shall monitor with detection equipment the H₂S Concentration, wind and area of exposure (ROE). This person will determine the outer perimeter of the hazardous area. The extent of the evacuation area will be determined from the data being collected. Monitoring shall continue until the situation has been resolved. **(All monitoring equipment will be UL approved, for use in class I groups A,B,C & D, Division I, hazardous locations. All monitors will have a minimum capability of measuring H₂S, oxygen, and flammable values.)**
- 3) Law enforcement shall be notified to set up necessary barriers and maintain such for the duration of the situation as well as aid in the evacuation procedure.
- 4) The company supervising personnel shall stay in communication with all agencies through out the duration of the situation and inform such agencies when the situation has been contained and the effected area(s) is safe to enter.

CHARACTERISTICS OF H₂S AND SO₂

Common Name	Chemical Formula	Specific Gravity	Threshold Limit	Hazardous Limit	Lethal Concentration
Hydrogen Sulfide	H ₂ S	1.189 Air = 1	10 ppm	100 ppm	600 ppm
Sulfur Dioxide	SO ₂	2.21 Air = 1	2 ppm	N/A	1000 ppm

TRAINING:

All responders must have training in the detection of H₂S measures for protection against the gas, equipment used for protection and emergency response. Weekly drills by all crews will be conducted and recorded in the IADC daily log. Additionally, responders must be equipped with H₂S monitors at all times.

PUBLIC RELATIONS

Kaiser-Francis recognizes that the news media have a legitimate interest in incidents at Kaiser-Francis facilities that could affect the public. It is to the company's benefit to cooperate with the news media when incidents occur because these media are our best liaison with the public.

Our objective is to see that all reports of any emergency are factual and represent the company's position fairly and accurately. Cooperation with news media representatives is the most reliable guarantee that this objective will be met.

All contract and Kaiser-Francis employees are instructed **NOT** to make any statement to the media concerning the emergency incident. If a media representative contacts any employee, they should refer them to the designated Emergency Command Center where they should contact the Incident Commander or his designated relief for any information concerning the incident.

Kaiser-Francis Oil Company

Project: Permian NM E'83
 County: Lea
 Site: BLUN Pad 8
 Well: Bell Lake Unit North 210H
 Wellbore: #210H OH
 Design: Plan #1



CASING DETAILS

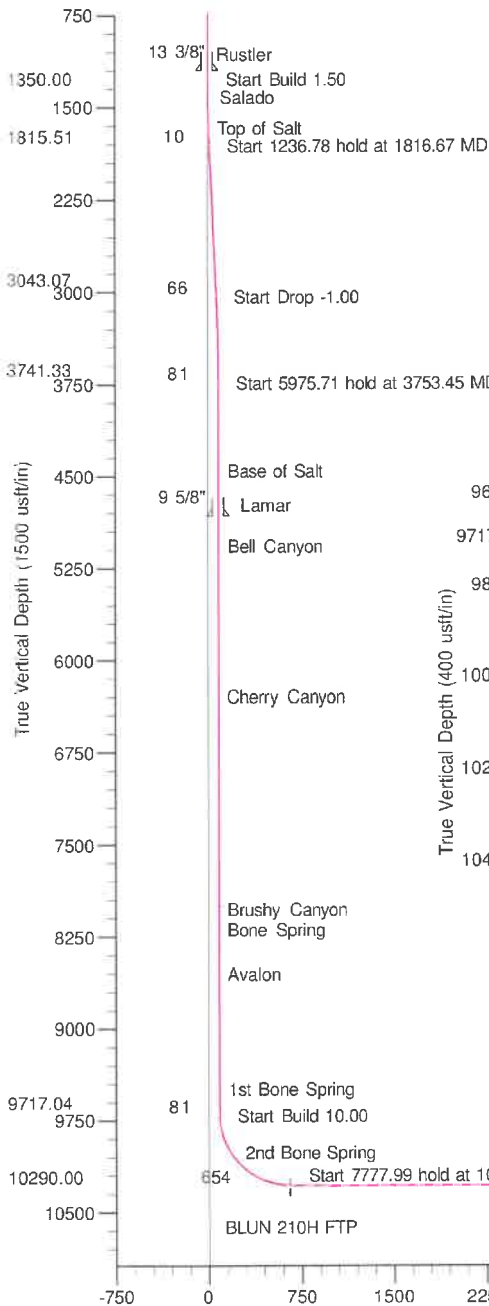
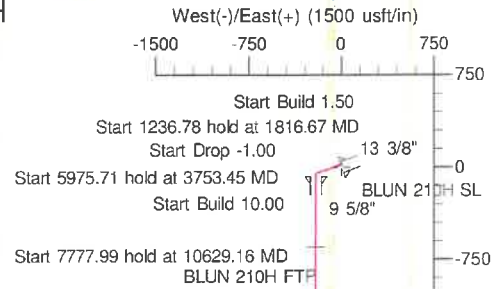
TVD	MD	Name
1200.00	1200.00	13 3/8"
4825.00	4837.12	9 5/8"



Azimuths to Grid North
 True North: -0.44°
 Magnetic North: 6.15°

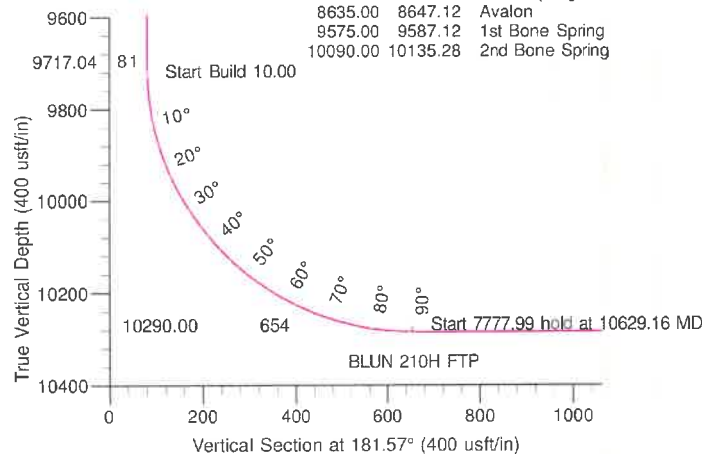
Magnetic Field
 Strength: 47629.8snT
 Dip Angle: 60.03°
 Date: 11/04/2020
 Model: IGRF2020

US State Plane 1983
 New Mexico Eastern Zone
 32° 20' 7.115 N
 103° 30' 25.690 W



FORMATION DETAILS

TVDPath	MDPath	Formation
1150.00	1150.00	Rustler
1450.00	1450.01	Salado
1750.00	1750.73	Top of Salt
4540.00	4552.12	Base of Salt
4825.00	4837.12	Lamar
5150.00	5162.12	Bell Canyon
6375.00	6387.12	Cherry Canyon
8000.00	8012.12	Brushy Canyon
8275.00	8287.12	Bone Spring
8635.00	8647.12	Avalon
9575.00	9587.12	1st Bone Spring
10090.00	10135.28	2nd Bone Spring



BLUN 210H PBHL
 TD at 18407.15
 8430
 BLUN 210H PBHL

Vertical Section at 181.57° (1500 usft/in)

DESIGN TARGET DETAILS

Name	TVD	+N/-S	+E/-W	Northing	Easting	Latitude	Longitude
BLUN 210H SL	0.00	0.00	0.00	486701.85	796516.12	32° 20' 7.115 N	103° 30' 25.690 W
BLUN 210H FTP	10290.00	-648.41	-210.17	486053.45	796305.95	32° 20' 0.715 N	103° 30' 28.198 W
BLUN 210H PBHL	10290.00	-8426.37	-230.35	478275.62	796285.77	32° 18' 43.756 N	103° 30' 29.131 W

SECTION DETAILS

Sec	MD	Inc	Azi	TVD	+N/-S	+E/-W	Dleg	TFace	Vsect	Target
1	0.00	0.00	0.00	0.00	0.00	0.00	0.00	0.00	0.00	
2	1350.00	0.00	0.00	1350.00	0.00	0.00	0.00	0.00	0.00	
3	1816.67	7.00	250.12	1815.51	-9.68	-26.78	1.50	250.12	10.41	
4	3053.45	7.00	250.12	3043.07	-60.93	-168.52	0.00	0.00	65.51	
5	3753.45	0.00	0.00	3741.33	-75.45	-208.69	1.00	180.00	81.12	
6	9729.16	0.00	0.00	9717.04	-75.45	-208.69	0.00	0.00	81.12	
7	710629.16	90.00	180.15	10290.00	-648.40	-210.17	10.00	180.15	653.90	
8	818407.15	90.00	180.15	10290.00	-8426.37	-230.35	0.00	0.00	8429.52	BLUN 210H PBHL

S6-T23S-R34E SL
 2035'FNL 1985'FEL
 S6-T23S-R34E FTP
 2600'FSL 2200'FEL
 S7-T23S-R34E PBHL
 100'FSL 2290'FEL

Titan Directional Drilling

Survey Report

Company: Kaiser-Francis Oil Company	Local Co-ordinate Reference: Well Bell Lake Unit North 210H - Slot G	
Project: Permian NM E'83	TVD Reference: est.GL+KB @ 3488.00usft (planning)	
Site: BLUN Pad 8	MD Reference: est.GL+KB @ 3488.00usft (planning)	
Well: Bell Lake Unit North 210H	North Reference: Grid	
Wellbore: #210H OH	Survey Calculation Method: Minimum Curvature	
Design: Plan #1	Database: EDM 5k-14	

Project Permian NM E'83		
Map System: US State Plane 1983	System Datum: Mean Sea Level	
Geo Datum: North American Datum 1983		
Map Zone: New Mexico Eastern Zone	Using geodetic scale factor	

Site - BLUN Pad 8, Centered on 209H			
Site Position:	Northing: 486,671.88 usft	Latitude: 32° 20' 6.818 N	
From: Map	Easting: 796,516.28 usft	Longitude: 103° 30' 25.691 W	
Position Uncertainty: 0.00 usft	Slot Radius: 13-3/16 "	Grid Convergence: 0.44 °	

Well Bell Lake Unit North 210H - Slot G			
Well Position +N/-S 0.00 usft	Northing: 486,701.85 usft	Latitude: 32° 20' 7.115 N	
+E/-W 0.00 usft	Easting: 796,516.12 usft	Longitude: 103° 30' 25.690 W	
Position Uncertainty 0.00 usft	Wellhead Elevation: usft	Ground Level: 3,461.90 usft	

Wellbore #210H OH					
Magnetics	Model Name	Sample Date	Declination (°)	Dip Angle (°)	Field Strength (nT)
	IGRF2020	11/04/20	6.60	60.03	47,629.78968693

Design Plan #1				
Audit Notes:				
Version:	Phase: PROTOTYPE	Tie On Depth: 0.00		
Vertical Section:	Depth From (TVD) (usft)	+N/-S (usft)	+E/-W (usft)	Direction (°)
	0.00	0.00	0.00	181.57

Planned Survey									
Measured Depth (usft)	Inclination (°)	Azimuth (°)	Vertical Depth (usft)	+N/-S (usft)	+E/-W (usft)	Vertical Section (usft)	Dogleg Rate (°/100usft)	Build Rate (°/100usft)	Turn Rate (°/100usft)
0.00	0.00	0.00	0.00	0.00	0.00	0.00	0.00	0.00	0.00
1,150.00	0.00	0.00	1,150.00	0.00	0.00	0.00	0.00	0.00	0.00
Rustler									
1,200.00	0.00	0.00	1,200.00	0.00	0.00	0.00	0.00	0.00	0.00
13 3/8"									
1,350.00	0.00	0.00	1,350.00	0.00	0.00	0.00	0.00	0.00	0.00
1,400.00	0.75	250.12	1,400.00	-0.11	-0.31	0.12	1.50	1.50	0.00
1,450.01	1.50	250.12	1,450.00	-0.45	-1.23	0.48	1.50	1.50	0.00
Salado									
1,500.00	2.25	250.12	1,499.96	-1.00	-2.77	1.08	1.50	1.50	0.00
1,600.00	3.75	250.12	1,599.82	-2.78	-7.69	2.99	1.50	1.50	0.00
1,700.00	5.25	250.12	1,699.51	-5.45	-15.07	5.86	1.50	1.50	0.00
1,750.73	6.01	250.12	1,750.00	-7.14	-19.75	7.68	1.50	1.50	0.00
Top of Salt									
1,800.00	6.75	250.12	1,798.96	-9.00	-24.90	9.68	1.50	1.50	0.00
1,816.67	7.00	250.12	1,815.51	-9.68	-26.78	10.41	1.50	1.50	0.00

Titan Directional Drilling

Survey Report

Company: Kaiser-Francis Oil Company
Project: Permian NM E'83
Site: BLUN Pad 8
Well: Bell Lake Unit North 210H
Wellbore: #210H OH
Design: Plan #1

Local Co-ordinate Reference: Well Bell Lake Unit North 210H - Slot G
TVD Reference: est.GL+KB @ 3488.00usft (planning)
MD Reference: est.GL+KB @ 3488.00usft (planning)
North Reference: Grid
Survey Calculation Method: Minimum Curvature
Database: EDM 5k-14

Planned Survey

Measured Depth (usft)	Inclination (°)	Azimuth (°)	Vertical Depth (usft)	+N/-S (usft)	+E/-W (usft)	Vertical Section (usft)	Dogleg Rate (°/100usft)	Build Rate (°/100usft)	Turn Rate (°/100usft)
1,900.00	7.00	250.12	1,898.22	-13.13	-36.33	14.12	0.00	0.00	0.00
2,000.00	7.00	250.12	1,997.47	-17.28	-47.79	18.58	0.00	0.00	0.00
2,100.00	7.00	250.12	2,096.73	-21.42	-59.25	23.03	0.00	0.00	0.00
2,200.00	7.00	250.12	2,195.98	-25.56	-70.71	27.49	0.00	0.00	0.00
2,300.00	7.00	250.12	2,295.24	-29.71	-82.17	31.94	0.00	0.00	0.00
2,400.00	7.00	250.12	2,394.49	-33.85	-93.63	36.40	0.00	0.00	0.00
2,500.00	7.00	250.12	2,493.75	-37.99	-105.09	40.85	0.00	0.00	0.00
2,600.00	7.00	250.12	2,593.00	-42.14	-116.55	45.31	0.00	0.00	0.00
2,700.00	7.00	250.12	2,692.26	-46.28	-128.01	49.76	0.00	0.00	0.00
2,800.00	7.00	250.12	2,791.51	-50.42	-139.48	54.22	0.00	0.00	0.00
2,900.00	7.00	250.12	2,890.76	-54.57	-150.94	58.67	0.00	0.00	0.00
3,000.00	7.00	250.12	2,990.02	-58.71	-162.40	63.13	0.00	0.00	0.00
3,053.45	7.00	250.12	3,043.07	-60.93	-168.52	65.51	0.00	0.00	0.00
3,100.00	6.53	250.12	3,089.30	-62.79	-173.68	67.51	1.00	-1.00	0.00
3,200.00	5.53	250.12	3,188.74	-66.36	-183.57	71.36	1.00	-1.00	0.00
3,300.00	4.53	250.12	3,288.35	-69.35	-191.82	74.56	1.00	-1.00	0.00
3,400.00	3.53	250.12	3,388.11	-71.74	-198.44	77.14	1.00	-1.00	0.00
3,500.00	2.53	250.12	3,487.96	-73.54	-203.42	79.07	1.00	-1.00	0.00
3,600.00	1.53	250.12	3,587.90	-74.75	-206.75	80.37	1.00	-1.00	0.00
3,700.00	0.53	250.12	3,687.88	-75.36	-208.45	81.03	1.00	-1.00	0.00
3,753.45	0.00	0.00	3,741.33	-75.45	-208.69	81.12	1.00	-1.00	0.00
3,800.00	0.00	0.00	3,787.88	-75.45	-208.69	81.12	0.00	0.00	0.00
3,900.00	0.00	0.00	3,887.88	-75.45	-208.69	81.12	0.00	0.00	0.00
4,000.00	0.00	0.00	3,987.88	-75.45	-208.69	81.12	0.00	0.00	0.00
4,100.00	0.00	0.00	4,087.88	-75.45	-208.69	81.12	0.00	0.00	0.00
4,200.00	0.00	0.00	4,187.88	-75.45	-208.69	81.12	0.00	0.00	0.00
4,300.00	0.00	0.00	4,287.88	-75.45	-208.69	81.12	0.00	0.00	0.00
4,400.00	0.00	0.00	4,387.88	-75.45	-208.69	81.12	0.00	0.00	0.00
4,500.00	0.00	0.00	4,487.88	-75.45	-208.69	81.12	0.00	0.00	0.00
4,552.12	0.00	0.00	4,540.00	-75.45	-208.69	81.12	0.00	0.00	0.00
Base of Salt									
4,600.00	0.00	0.00	4,587.88	-75.45	-208.69	81.12	0.00	0.00	0.00
4,700.00	0.00	0.00	4,687.88	-75.45	-208.69	81.12	0.00	0.00	0.00
4,800.00	0.00	0.00	4,787.88	-75.45	-208.69	81.12	0.00	0.00	0.00
4,837.12	0.00	0.00	4,825.00	-75.45	-208.69	81.12	0.00	0.00	0.00
Lamar - 9 5/8"									
4,900.00	0.00	0.00	4,887.88	-75.45	-208.69	81.12	0.00	0.00	0.00
5,000.00	0.00	0.00	4,987.88	-75.45	-208.69	81.12	0.00	0.00	0.00
5,100.00	0.00	0.00	5,087.88	-75.45	-208.69	81.12	0.00	0.00	0.00
5,162.12	0.00	0.00	5,150.00	-75.45	-208.69	81.12	0.00	0.00	0.00
Bell Canyon									
5,200.00	0.00	0.00	5,187.88	-75.45	-208.69	81.12	0.00	0.00	0.00
5,300.00	0.00	0.00	5,287.88	-75.45	-208.69	81.12	0.00	0.00	0.00
5,400.00	0.00	0.00	5,387.88	-75.45	-208.69	81.12	0.00	0.00	0.00

Titan Directional Drilling

Survey Report

Company: Kaiser-Francis Oil Company
Project: Permian NM E'83
Site: BLUN Pad 8
Well: Bell Lake Unit North 210H
Wellbore: #210H OH
Design: Plan #1

Local Co-ordinate Reference: Well Bell Lake Unit North 210H - Slot G
TVD Reference: est.GL+KB @ 3488.00usft (planning)
MD Reference: est.GL+KB @ 3488.00usft (planning)
North Reference: Grid
Survey Calculation Method: Minimum Curvature
Database: EDM 5k-14

Planned Survey

Measured Depth (usft)	Inclination (°)	Azimuth (°)	Vertical Depth (usft)	+N/-S (usft)	+E/-W (usft)	Vertical Section (usft)	Dogleg Rate (°/100usft)	Build Rate (°/100usft)	Turn Rate (°/100usft)
5,500.00	0.00	0.00	5,487.88	-75.45	-208.69	81.12	0.00	0.00	0.00
5,600.00	0.00	0.00	5,587.88	-75.45	-208.69	81.12	0.00	0.00	0.00
5,700.00	0.00	0.00	5,687.88	-75.45	-208.69	81.12	0.00	0.00	0.00
5,800.00	0.00	0.00	5,787.88	-75.45	-208.69	81.12	0.00	0.00	0.00
5,900.00	0.00	0.00	5,887.88	-75.45	-208.69	81.12	0.00	0.00	0.00
6,000.00	0.00	0.00	5,987.88	-75.45	-208.69	81.12	0.00	0.00	0.00
6,100.00	0.00	0.00	6,087.88	-75.45	-208.69	81.12	0.00	0.00	0.00
6,200.00	0.00	0.00	6,187.88	-75.45	-208.69	81.12	0.00	0.00	0.00
6,300.00	0.00	0.00	6,287.88	-75.45	-208.69	81.12	0.00	0.00	0.00
6,387.12	0.00	0.00	6,375.00	-75.45	-208.69	81.12	0.00	0.00	0.00
Cherry Canyon									
6,400.00	0.00	0.00	6,387.88	-75.45	-208.69	81.12	0.00	0.00	0.00
6,500.00	0.00	0.00	6,487.88	-75.45	-208.69	81.12	0.00	0.00	0.00
6,600.00	0.00	0.00	6,587.88	-75.45	-208.69	81.12	0.00	0.00	0.00
6,700.00	0.00	0.00	6,687.88	-75.45	-208.69	81.12	0.00	0.00	0.00
6,800.00	0.00	0.00	6,787.88	-75.45	-208.69	81.12	0.00	0.00	0.00
6,900.00	0.00	0.00	6,887.88	-75.45	-208.69	81.12	0.00	0.00	0.00
7,000.00	0.00	0.00	6,987.88	-75.45	-208.69	81.12	0.00	0.00	0.00
7,100.00	0.00	0.00	7,087.88	-75.45	-208.69	81.12	0.00	0.00	0.00
7,200.00	0.00	0.00	7,187.88	-75.45	-208.69	81.12	0.00	0.00	0.00
7,300.00	0.00	0.00	7,287.88	-75.45	-208.69	81.12	0.00	0.00	0.00
7,400.00	0.00	0.00	7,387.88	-75.45	-208.69	81.12	0.00	0.00	0.00
7,500.00	0.00	0.00	7,487.88	-75.45	-208.69	81.12	0.00	0.00	0.00
7,600.00	0.00	0.00	7,587.88	-75.45	-208.69	81.12	0.00	0.00	0.00
7,700.00	0.00	0.00	7,687.88	-75.45	-208.69	81.12	0.00	0.00	0.00
7,800.00	0.00	0.00	7,787.88	-75.45	-208.69	81.12	0.00	0.00	0.00
7,900.00	0.00	0.00	7,887.88	-75.45	-208.69	81.12	0.00	0.00	0.00
8,000.00	0.00	0.00	7,987.88	-75.45	-208.69	81.12	0.00	0.00	0.00
8,012.12	0.00	0.00	8,000.00	-75.45	-208.69	81.12	0.00	0.00	0.00
Brushy Canyon									
8,100.00	0.00	0.00	8,087.88	-75.45	-208.69	81.12	0.00	0.00	0.00
8,200.00	0.00	0.00	8,187.88	-75.45	-208.69	81.12	0.00	0.00	0.00
8,287.12	0.00	0.00	8,275.00	-75.45	-208.69	81.12	0.00	0.00	0.00
Bone Spring									
8,300.00	0.00	0.00	8,287.88	-75.45	-208.69	81.12	0.00	0.00	0.00
8,400.00	0.00	0.00	8,387.88	-75.45	-208.69	81.12	0.00	0.00	0.00
8,500.00	0.00	0.00	8,487.88	-75.45	-208.69	81.12	0.00	0.00	0.00
8,600.00	0.00	0.00	8,587.88	-75.45	-208.69	81.12	0.00	0.00	0.00
8,647.12	0.00	0.00	8,635.00	-75.45	-208.69	81.12	0.00	0.00	0.00
Avalon									
8,700.00	0.00	0.00	8,687.88	-75.45	-208.69	81.12	0.00	0.00	0.00
8,800.00	0.00	0.00	8,787.88	-75.45	-208.69	81.12	0.00	0.00	0.00
8,900.00	0.00	0.00	8,887.88	-75.45	-208.69	81.12	0.00	0.00	0.00
9,000.00	0.00	0.00	8,987.88	-75.45	-208.69	81.12	0.00	0.00	0.00

Titan Directional Drilling

Survey Report

Company: Kaiser-Francis Oil Company
Project: Permian NM E'83
Site: BLUN Pad 8
Well: Bell Lake Unit North 210H
Wellbore: #210H OH
Design: Plan #1

Local Co-ordinate Reference: Well Bell Lake Unit North 210H - Slot G
TVD Reference: est.GL+KB @ 3488.00usft (planning)
MD Reference: est.GL+KB @ 3488.00usft (planning)
North Reference: Grid
Survey Calculation Method: Minimum Curvature
Database: EDM 5k-14

Planned Survey

Measured Depth (usft)	Inclination (°)	Azimuth (°)	Vertical Depth (usft)	+N/-S (usft)	+E/-W (usft)	Vertical Section (usft)	Dogleg Rate (°/100usft)	Build Rate (°/100usft)	Turn Rate (°/100usft)
9,100.00	0.00	0.00	9,087.88	-75.45	-208.69	81.12	0.00	0.00	0.00
9,200.00	0.00	0.00	9,187.88	-75.45	-208.69	81.12	0.00	0.00	0.00
9,300.00	0.00	0.00	9,287.88	-75.45	-208.69	81.12	0.00	0.00	0.00
9,400.00	0.00	0.00	9,387.88	-75.45	-208.69	81.12	0.00	0.00	0.00
9,500.00	0.00	0.00	9,487.88	-75.45	-208.69	81.12	0.00	0.00	0.00
9,587.12	0.00	0.00	9,575.00	-75.45	-208.69	81.12	0.00	0.00	0.00
1st Bone Spring									
9,600.00	0.00	0.00	9,587.88	-75.45	-208.69	81.12	0.00	0.00	0.00
9,700.00	0.00	0.00	9,687.88	-75.45	-208.69	81.12	0.00	0.00	0.00
9,729.16	0.00	0.00	9,717.04	-75.45	-208.69	81.12	0.00	0.00	0.00
9,750.00	2.08	180.15	9,737.88	-75.82	-208.69	81.50	10.00	10.00	0.00
9,800.00	7.08	180.15	9,787.70	-79.82	-208.70	85.49	10.00	10.00	0.00
9,850.00	12.08	180.15	9,836.99	-88.14	-208.72	93.81	10.00	10.00	0.00
9,900.00	17.08	180.15	9,885.36	-100.73	-208.75	106.39	10.00	10.00	0.00
9,950.00	22.08	180.15	9,932.45	-117.48	-208.80	123.14	10.00	10.00	0.00
10,000.00	27.08	180.15	9,977.91	-138.28	-208.85	143.93	10.00	10.00	0.00
10,050.00	32.08	180.15	10,021.37	-162.95	-208.91	168.60	10.00	10.00	0.00
10,100.00	37.08	180.15	10,062.53	-191.32	-208.99	196.96	10.00	10.00	0.00
10,135.28	40.61	180.15	10,090.00	-213.45	-209.04	219.08	10.00	10.00	0.00
2nd Bone Spring									
10,150.00	42.08	180.15	10,101.05	-223.17	-209.07	228.80	10.00	10.00	0.00
10,200.00	47.08	180.15	10,136.65	-258.26	-209.16	263.88	10.00	10.00	0.00
10,250.00	52.08	180.15	10,169.06	-296.32	-209.26	301.92	10.00	10.00	0.00
10,300.00	57.08	180.15	10,198.02	-337.05	-209.37	342.65	10.00	10.00	0.00
10,350.00	62.08	180.15	10,223.33	-380.16	-209.48	385.74	10.00	10.00	0.00
10,400.00	67.08	180.15	10,244.78	-425.30	-209.59	430.87	10.00	10.00	0.00
10,450.00	72.08	180.15	10,262.22	-472.15	-209.72	477.70	10.00	10.00	0.00
10,500.00	77.08	180.15	10,275.50	-520.33	-209.84	525.87	10.00	10.00	0.00
10,550.00	82.08	180.15	10,284.54	-569.49	-209.97	575.02	10.00	10.00	0.00
10,600.00	87.08	180.15	10,289.26	-619.25	-210.10	624.76	10.00	10.00	0.00
10,629.16	90.00	180.15	10,290.00	-648.40	-210.17	653.90	10.00	10.00	0.00
10,700.00	90.00	180.15	10,290.00	-719.24	-210.36	724.72	0.00	0.00	0.00
10,800.00	90.00	180.15	10,290.00	-819.24	-210.62	824.69	0.00	0.00	0.00
10,900.00	90.00	180.15	10,290.00	-919.24	-210.88	924.66	0.00	0.00	0.00
11,000.00	90.00	180.15	10,290.00	-1,019.24	-211.14	1,024.63	0.00	0.00	0.00
11,100.00	90.00	180.15	10,290.00	-1,119.24	-211.39	1,124.60	0.00	0.00	0.00
11,200.00	90.00	180.15	10,290.00	-1,219.24	-211.65	1,224.57	0.00	0.00	0.00
11,300.00	90.00	180.15	10,290.00	-1,319.24	-211.91	1,324.54	0.00	0.00	0.00
11,400.00	90.00	180.15	10,290.00	-1,419.24	-212.17	1,424.51	0.00	0.00	0.00
11,500.00	90.00	180.15	10,290.00	-1,519.24	-212.43	1,524.47	0.00	0.00	0.00
11,600.00	90.00	180.15	10,290.00	-1,619.24	-212.69	1,624.44	0.00	0.00	0.00
11,700.00	90.00	180.15	10,290.00	-1,719.24	-212.95	1,724.41	0.00	0.00	0.00
11,800.00	90.00	180.15	10,290.00	-1,819.24	-213.21	1,824.38	0.00	0.00	0.00
11,900.00	90.00	180.15	10,290.00	-1,919.24	-213.47	1,924.35	0.00	0.00	0.00

Titan Directional Drilling

Survey Report

Company: Kaiser-Francis Oil Company
Project: Permian NM E'83
Site: BLUN Pad 8
Well: Bell Lake Unit North 210H
Wellbore: #210H OH
Design: Plan #1

Local Co-ordinate Reference: Well Bell Lake Unit North 210H - Slot G
TVD Reference: est.GL+KB @ 3488.00usft (planning)
MD Reference: est.GL+KB @ 3488.00usft (planning)
North Reference: Grid
Survey Calculation Method: Minimum Curvature
Database: EDM 5k-14

Planned Survey

Measured Depth (usft)	Inclination (°)	Azimuth (°)	Vertical Depth (usft)	+N/-S (usft)	+E/-W (usft)	Vertical Section (usft)	Dogleg Rate (°/100usft)	Build Rate (°/100usft)	Turn Rate (°/100usft)
12,000.00	90.00	180.15	10,290.00	-2,019.24	-213.73	2,024.32	0.00	0.00	0.00
12,100.00	90.00	180.15	10,290.00	-2,119.23	-213.99	2,124.29	0.00	0.00	0.00
12,200.00	90.00	180.15	10,290.00	-2,219.23	-214.25	2,224.26	0.00	0.00	0.00
12,300.00	90.00	180.15	10,290.00	-2,319.23	-214.51	2,324.23	0.00	0.00	0.00
12,400.00	90.00	180.15	10,290.00	-2,419.23	-214.77	2,424.20	0.00	0.00	0.00
12,500.00	90.00	180.15	10,290.00	-2,519.23	-215.03	2,524.17	0.00	0.00	0.00
12,600.00	90.00	180.15	10,290.00	-2,619.23	-215.29	2,624.14	0.00	0.00	0.00
12,700.00	90.00	180.15	10,290.00	-2,719.23	-215.55	2,724.11	0.00	0.00	0.00
12,800.00	90.00	180.15	10,290.00	-2,819.23	-215.81	2,824.08	0.00	0.00	0.00
12,900.00	90.00	180.15	10,290.00	-2,919.23	-216.06	2,924.05	0.00	0.00	0.00
13,000.00	90.00	180.15	10,290.00	-3,019.23	-216.32	3,024.02	0.00	0.00	0.00
13,100.00	90.00	180.15	10,290.00	-3,119.23	-216.58	3,123.99	0.00	0.00	0.00
13,200.00	90.00	180.15	10,290.00	-3,219.23	-216.84	3,223.95	0.00	0.00	0.00
13,300.00	90.00	180.15	10,290.00	-3,319.23	-217.10	3,323.92	0.00	0.00	0.00
13,400.00	90.00	180.15	10,290.00	-3,419.23	-217.36	3,423.89	0.00	0.00	0.00
13,500.00	90.00	180.15	10,290.00	-3,519.23	-217.62	3,523.86	0.00	0.00	0.00
13,600.00	90.00	180.15	10,290.00	-3,619.23	-217.88	3,623.83	0.00	0.00	0.00
13,700.00	90.00	180.15	10,290.00	-3,719.23	-218.14	3,723.80	0.00	0.00	0.00
13,800.00	90.00	180.15	10,290.00	-3,819.23	-218.40	3,823.77	0.00	0.00	0.00
13,900.00	90.00	180.15	10,290.00	-3,919.23	-218.66	3,923.74	0.00	0.00	0.00
14,000.00	90.00	180.15	10,290.00	-4,019.23	-218.92	4,023.71	0.00	0.00	0.00
14,100.00	90.00	180.15	10,290.00	-4,119.23	-219.18	4,123.68	0.00	0.00	0.00
14,200.00	90.00	180.15	10,290.00	-4,219.23	-219.44	4,223.65	0.00	0.00	0.00
14,300.00	90.00	180.15	10,290.00	-4,319.23	-219.70	4,323.62	0.00	0.00	0.00
14,400.00	90.00	180.15	10,290.00	-4,419.23	-219.96	4,423.59	0.00	0.00	0.00
14,500.00	90.00	180.15	10,290.00	-4,519.23	-220.22	4,523.56	0.00	0.00	0.00
14,600.00	90.00	180.15	10,290.00	-4,619.23	-220.48	4,623.53	0.00	0.00	0.00
14,700.00	90.00	180.15	10,290.00	-4,719.23	-220.74	4,723.50	0.00	0.00	0.00
14,800.00	90.00	180.15	10,290.00	-4,819.23	-220.99	4,823.47	0.00	0.00	0.00
14,900.00	90.00	180.15	10,290.00	-4,919.23	-221.25	4,923.43	0.00	0.00	0.00
15,000.00	90.00	180.15	10,290.00	-5,019.23	-221.51	5,023.40	0.00	0.00	0.00
15,100.00	90.00	180.15	10,290.00	-5,119.22	-221.77	5,123.37	0.00	0.00	0.00
15,200.00	90.00	180.15	10,290.00	-5,219.22	-222.03	5,223.34	0.00	0.00	0.00
15,300.00	90.00	180.15	10,290.00	-5,319.22	-222.29	5,323.31	0.00	0.00	0.00
15,400.00	90.00	180.15	10,290.00	-5,419.22	-222.55	5,423.28	0.00	0.00	0.00
15,500.00	90.00	180.15	10,290.00	-5,519.22	-222.81	5,523.25	0.00	0.00	0.00
15,600.00	90.00	180.15	10,290.00	-5,619.22	-223.07	5,623.22	0.00	0.00	0.00
15,700.00	90.00	180.15	10,290.00	-5,719.22	-223.33	5,723.19	0.00	0.00	0.00
15,800.00	90.00	180.15	10,290.00	-5,819.22	-223.59	5,823.16	0.00	0.00	0.00
15,900.00	90.00	180.15	10,290.00	-5,919.22	-223.85	5,923.13	0.00	0.00	0.00
16,000.00	90.00	180.15	10,290.00	-6,019.22	-224.11	6,023.10	0.00	0.00	0.00
16,100.00	90.00	180.15	10,290.00	-6,119.22	-224.37	6,123.07	0.00	0.00	0.00
16,200.00	90.00	180.15	10,290.00	-6,219.22	-224.63	6,223.04	0.00	0.00	0.00

Titan Directional Drilling

Survey Report

Company: Kaiser-Francis Oil Company
Project: Permian NM E'83
Site: BLUN Pad 8
Well: Bell Lake Unit North 210H
Wellbore: #210H OH
Design: Plan #1

Local Co-ordinate Reference: Well Bell Lake Unit North 210H - Slot G
TVD Reference: est.GL+KB @ 3488.00usft (planning)
MD Reference: est.GL+KB @ 3488.00usft (planning)
North Reference: Grid
Survey Calculation Method: Minimum Curvature
Database: EDM 5k-14

Planned Survey

Measured Depth (usft)	Inclination (°)	Azimuth (°)	Vertical Depth (usft)	+N/-S (usft)	+E/-W (usft)	Vertical Section (usft)	Dogleg Rate (°/100usft)	Build Rate (°/100usft)	Turn Rate (°/100usft)
16,300.00	90.00	180.15	10,290.00	-6,319.22	-224.89	6,323.01	0.00	0.00	0.00
16,400.00	90.00	180.15	10,290.00	-6,419.22	-225.15	6,422.98	0.00	0.00	0.00
16,500.00	90.00	180.15	10,290.00	-6,519.22	-225.41	6,522.95	0.00	0.00	0.00
16,600.00	90.00	180.15	10,290.00	-6,619.22	-225.66	6,622.91	0.00	0.00	0.00
16,700.00	90.00	180.15	10,290.00	-6,719.22	-225.92	6,722.88	0.00	0.00	0.00
16,800.00	90.00	180.15	10,290.00	-6,819.22	-226.18	6,822.85	0.00	0.00	0.00
16,900.00	90.00	180.15	10,290.00	-6,919.22	-226.44	6,922.82	0.00	0.00	0.00
17,000.00	90.00	180.15	10,290.00	-7,019.22	-226.70	7,022.79	0.00	0.00	0.00
17,100.00	90.00	180.15	10,290.00	-7,119.22	-226.96	7,122.76	0.00	0.00	0.00
17,200.00	90.00	180.15	10,290.00	-7,219.22	-227.22	7,222.73	0.00	0.00	0.00
17,300.00	90.00	180.15	10,290.00	-7,319.22	-227.48	7,322.70	0.00	0.00	0.00
17,400.00	90.00	180.15	10,290.00	-7,419.22	-227.74	7,422.67	0.00	0.00	0.00
17,500.00	90.00	180.15	10,290.00	-7,519.22	-228.00	7,522.64	0.00	0.00	0.00
17,600.00	90.00	180.15	10,290.00	-7,619.22	-228.26	7,622.61	0.00	0.00	0.00
17,700.00	90.00	180.15	10,290.00	-7,719.22	-228.52	7,722.58	0.00	0.00	0.00
17,800.00	90.00	180.15	10,290.00	-7,819.22	-228.78	7,822.55	0.00	0.00	0.00
17,900.00	90.00	180.15	10,290.00	-7,919.22	-229.04	7,922.52	0.00	0.00	0.00
18,000.00	90.00	180.15	10,290.00	-8,019.22	-229.30	8,022.49	0.00	0.00	0.00
18,100.00	90.00	180.15	10,290.00	-8,119.21	-229.56	8,122.46	0.00	0.00	0.00
18,200.00	90.00	180.15	10,290.00	-8,219.21	-229.82	8,222.43	0.00	0.00	0.00
18,300.00	90.00	180.15	10,290.00	-8,319.21	-230.08	8,322.39	0.00	0.00	0.00
18,407.15	90.00	180.15	10,290.00	-8,426.37	-230.35	8,429.52	0.00	0.00	0.00

Casing Points

Measured Depth (usft)	Vertical Depth (usft)	Name	Casing Diameter (")	Hole Diameter (")
1,200.00	1,200.00	13 3/8"	13-3/8	17-1/2
4,837.12	4,825.00	9 5/8"	9-5/8	12-1/4

Titan Directional Drilling

Survey Report

Company: Kaiser-Francis Oil Company
Project: Permian NM E'83
Site: BLUN Pad 8
Well: Bell Lake Unit North 210H
Wellbore: #210H OH
Design: Plan #1

Local Co-ordinate Reference: Well Bell Lake Unit North 210H - Slot G
TVD Reference: est.GL+KB @ 3488.00usft (planning)
MD Reference: est.GL+KB @ 3488.00usft (planning)
North Reference: Grid
Survey Calculation Method: Minimum Curvature
Database: EDM 5k-14

Formations

Measured Depth (usft)	Vertical Depth (usft)	Name	Lithology	Dip (°)	Dip Direction (°)
1,150.00	1,150.00	Rustler		0.00	
1,450.01	1,450.00	Salado		0.00	
1,750.73	1,750.00	Top of Salt		0.00	
4,552.12	4,540.00	Base of Salt		0.00	
4,837.12	4,825.00	Lamar		0.00	
5,162.12	5,150.00	Bell Canyon		0.00	
6,387.12	6,375.00	Cherry Canyon		0.00	
8,012.12	8,000.00	Brushy Canyon		0.00	
8,287.12	8,275.00	Bone Spring		0.00	
8,647.12	8,635.00	Avalon		0.00	
9,587.12	9,575.00	1st Bone Spring		0.00	
10,135.28	10,090.00	2nd Bone Spring		0.00	



U.S. Department of the Interior
BUREAU OF LAND MANAGEMENT

SUPO Data Report

11/30/2020

APD ID: 10400054105

Submission Date: 02/09/2020

Highlighted data
reflects the most
recent changes

Operator Name: KAISER FRANCIS OIL COMPANY

Well Name: BELL LAKE UNIT NORTH

Well Number: 210H

[Show Final Text](#)

Well Type: OIL WELL

Well Work Type: Drill

Section 1 - Existing Roads

Will existing roads be used? YES

Existing Road Map:

BLUN_210H_Existing_Roads_20200209130656.pdf

Existing Road Purpose: ACCESS, FLUID TRANSPORT

Row(s) Exist? NO

ROW ID(s)

ID:

Do the existing roads need to be improved? NO

Existing Road Improvement Description:

Existing Road Improvement Attachment:

Section 2 - New or Reconstructed Access Roads

Will new roads be needed? YES

New Road Map:

BLUN_210H_Access_Road_20200209130709.pdf

New road type: RESOURCE

Length: 1137 Feet

Width (ft.): 30

Max slope (%): 2

Max grade (%): 2

Army Corp of Engineers (ACOE) permit required? N

ACOE Permit Number(s):

New road travel width: 20

New road access erosion control: Road construction requirements and regular maintenance would alleviate potential impacts to the access road from water erosion damage.

New road access plan or profile prepared? N

New road access plan attachment:

Access road engineering design? N

Access road engineering design attachment:

Operator Name: KAISER FRANCIS OIL COMPANY**Well Name:** BELL LAKE UNIT NORTH**Well Number:** 210H**Turnout?** N**Access surfacing type:** OTHER**Access topsoil source:** BOTH**Access surfacing type description:** Native caliche**Access onsite topsoil source depth:** 6**Offsite topsoil source description:** BLM's caliche pit in SWSW Section 22-T24-R34E or NENE Section 20-T23S-R33E.

Onsite topsoil removal process: The top 6 inches of topsoil is pushed off and stockpiled along the side of the location. An approximate 160 X 160 area is used within the proposed well site to remove caliche. Subsoil is removed and stockpiled within the pad site to build the location and road. Then subsoil is pushed back in the hole and caliche is spread accordingly across proposed access road.

Access other construction information:**Access miscellaneous information:****Number of access turnouts:****Access turnout map:**

Drainage Control

New road drainage crossing: OTHER

Drainage Control comments: Proposed access road will be crowned and ditched and constructed of 6 inch rolled and compacted caliche. Water will be diverted where necessary to avoid ponding, maintain good drainage, and to be consistent with local drainage patterns.

Road Drainage Control Structures (DCS) description: The ditches will be 3' wide with 3:1 slopes

Road Drainage Control Structures (DCS) attachment:

Access Additional Attachments

Section 3 - Location of Existing Wells

Existing Wells Map? YES**Attach Well map:**

BLUN_210H_1_MILE_WELLS_20200209130729.pdf

BLUN_210H_1_Mile_Wells_Map_20200209130729.pdf

Section 4 - Location of Existing and/or Proposed Production Facilities

Submit or defer a Proposed Production Facilities plan? DEFER

Estimated Production Facilities description: Production facilities are planned for the south side of pad. Plan for initial wells: 2-1000 bbl water tanks and 5 -1000 bbl oil tanks, a temporary 6X20 horizontal 3-phase sep, a 48 X 10 3-phase sep, a 8 X 20 heater treater and a 48X 10 2-phase sep

Operator Name: KAISER FRANCIS OIL COMPANY**Well Name:** BELL LAKE UNIT NORTH**Well Number:** 210H**Section 5 - Location and Types of Water Supply****Water Source Table****Water source type:** OTHER**Describe type:** Brine Water**Water source use type:** INTERMEDIATE/PRODUCTION
CASING**Source latitude:****Source longitude:****Source datum:****Water source permit type:** PRIVATE CONTRACT**Water source transport method:** TRUCKING**Source land ownership:** PRIVATE**Source transportation land ownership:** OTHER**Water source volume (barrels):** 20000**Source volume (gal):** 840000**Describe transportation land ownership:** Source transportation land ownership is a mixture of Federal, State and County.**Source volume (acre-feet):** 2.57786193**Water source type:** OTHER**Describe type:** FRESH WATER**Water source use type:** STIMULATION
OTHER
SURFACE CASING**Describe use type:** ROAD/PAD CONSTRUCTION AND**Source latitude:****Source longitude:****Source datum:****Water source permit type:** PRIVATE CONTRACT**Water source transport method:** TRUCKING**Source land ownership:** PRIVATE**Source transportation land ownership:** OTHER**Water source volume (barrels):** 250000**Source volume (gal):** 10500000**Describe transportation land ownership:** Source transportation land ownership is a mixture of Federal, State and County.**Source volume (acre-feet):** 32.223274

Operator Name: KAISER FRANCIS OIL COMPANY**Well Name:** BELL LAKE UNIT NORTH**Well Number:** 210H**Water source and transportation map:**

BLUN_Pad_8_Wtr_Source_Map_20200206081912.pdf

Water source comments: Source transportation land ownership is a mixture of Federal, State and County.**New water well?** N**New Water Well Info****Well latitude:****Well Longitude:****Well datum:****Well target aquifer:****Est. depth to top of aquifer(ft):****Est thickness of aquifer:****Aquifer comments:****Aquifer documentation:****Well depth (ft):****Well casing type:****Well casing outside diameter (in.):****Well casing inside diameter (in.):****New water well casing?****Used casing source:****Drilling method:****Drill material:****Grout material:****Grout depth:****Casing length (ft.):****Casing top depth (ft.):****Well Production type:****Completion Method:****Water well additional information:****State appropriation permit:****Additional information attachment:****Section 6 - Construction Materials****Using any construction materials:** YES**Construction Materials description:** On site caliche will be used for construction if sufficient. In the event insufficient quantities of caliche are available onsite, caliche will be trucked in from BLM's caliche pit in SWSW Section 22-T24-R34E or NENE Section 20-T23S-R33E.**Construction Materials source location attachment:****Section 7 - Methods for Handling Waste****Waste type:** DRILLING**Waste content description:** Drilling fluids and cuttings**Amount of waste:** 3900 barrels**Waste disposal frequency :** Weekly**Safe containment description:** All drilling fluids will be stored safely and disposed of properly

Operator Name: KAISER FRANCIS OIL COMPANY**Well Name:** BELL LAKE UNIT NORTH**Well Number:** 210H**Safe containmant attachment:****Waste disposal type:** HAUL TO COMMERCIAL FACILITY **Disposal location ownership:** COMMERCIAL**Disposal type description:****Disposal location description:** Cuttings will be hauled to R360's facility located in Section 27-T20S-R32E on US 62/180 at Halfway, NM**Waste type:** SEWAGE**Waste content description:** Human waste and grey water**Amount of waste:** 1000 gallons**Waste disposal frequency :** Weekly**Safe containment description:** Waste material will be stored safely and disposed of properly**Safe containmant attachment:****Waste disposal type:** HAUL TO COMMERCIAL FACILITY **Disposal location ownership:** COMMERCIAL**Disposal type description:****Disposal location description:** Trucked to an approved disposal facility (Carlsbad sewer plant SENW Section 10-T22S-R27E)**Waste type:** GARBAGE**Waste content description:** Miscellaneous trash**Amount of waste:** 500 pounds**Waste disposal frequency :** Weekly**Safe containment description:** Trash produced during drilling and completion operations will be collected in a trash container and disposed of properly**Safe containmant attachment:****Waste disposal type:** HAUL TO COMMERCIAL FACILITY **Disposal location ownership:** COMMERCIAL**Disposal type description:****Disposal location description:** Trucked to an approved disposal facility (Sandpoint Landfill (solid materials dump) NW/4 Section 11-T21S-R28E)**Reserve Pit****Reserve Pit being used?** NO**Temporary disposal of produced water into reserve pit?** NO**Reserve pit length (ft.)** **Reserve pit width (ft.)****Reserve pit depth (ft.)** **Reserve pit volume (cu. yd.)****Is at least 50% of the reserve pit in cut?****Reserve pit liner**

Operator Name: KAISER FRANCIS OIL COMPANY**Well Name:** BELL LAKE UNIT NORTH**Well Number:** 210H**Reserve pit liner specifications and installation description****Cuttings Area****Cuttings Area being used?** NO**Are you storing cuttings on location?** Y**Description of cuttings location** Cuttings will be stored in roll off bins and hauled to R360 located in Section 27-T20S-R32E on US 62/180 near Halfway.**Cuttings area length (ft.)****Cuttings area width (ft.)****Cuttings area depth (ft.)****Cuttings area volume (cu. yd.)****Is at least 50% of the cuttings area in cut?****WCuttings area liner****Cuttings area liner specifications and installation description****Section 8 - Ancillary Facilities****Are you requesting any Ancillary Facilities?:** N**Ancillary Facilities attachment:****Comments:****Section 9 - Well Site Layout****Well Site Layout Diagram:**

BLUN_210H_Wellsite_Layout_20200209130837.pdf

BLUN_Pad_8_Drilling_Layout_20200827120831.pdf

Comments:**Section 10 - Plans for Surface Reclamation****Type of disturbance:** New Surface Disturbance**Multiple Well Pad Name:** NORTH BELL LAKE UNIT**Multiple Well Pad Number:** 8**Recontouring attachment:**

BLUN_210H_IR_20200209130853.pdf

Drainage/Erosion control construction: During construction proper erosion control methods will be used to control erosion, runoff and siltation of the surrounding area.**Drainage/Erosion control reclamation:** Proper erosion control methods will be used on the area to control erosion, runoff and siltation of the surrounding area.

Operator Name: KAISER FRANCIS OIL COMPANY

Well Name: BELL LAKE UNIT NORTH

Well Number: 210H

Well pad proposed disturbance (acres): 5.83	Well pad interim reclamation (acres): 0.91	Well pad long term disturbance (acres): 4.92
Road proposed disturbance (acres): 0.783	Road interim reclamation (acres): 0	Road long term disturbance (acres): 0.783
Powerline proposed disturbance (acres): 0	Powerline interim reclamation (acres): 0	Powerline long term disturbance (acres): 0
Pipeline proposed disturbance (acres): 0	Pipeline interim reclamation (acres): 0	Pipeline long term disturbance (acres): 0
Other proposed disturbance (acres): 0	Other interim reclamation (acres): 0	Other long term disturbance (acres): 0
Total proposed disturbance: 6.613	Total interim reclamation: 0.91	Total long term disturbance: 5.703

Disturbance Comments:

Reconstruction method: The areas planned for interim reclamation will then be recontoured to the original contour if feasible, or if not feasible, to an interim contour that blends with the surrounding topography as much as possible. Where applicable, the fill material of the well pad will be backfilled into the cut to bring the area back to the original contour. The interim cut and fill slopes prior to re-seeding will not be steeper than a 3:1 ratio, unless the adjacent native topography is steeper. Note: Constructed slopes may be much steeper during drilling, but will be recontoured to the above ratios during interim reclamation.

Topsoil redistribution: Topsoil will be evenly respread and aggressively revegetated over the entire disturbed area not needed for all-weather operations

Soil treatment: To seed the area, the proper BLM seed mixture, free of noxious weeds, will be used. Final seedbed preparation will consist of contour cultivating to a depth of 4 to 6 inches within 24 hours prior to seeding, dozer tracking, or other imprinting in order to break the soil crust and create seed germination micro-sites.

Existing Vegetation at the well pad: The historic climax plant community is a grassland dominated by black grama, dropseeds, and blue stems with sand sage and shinnery oak distributed evenly throughout. Current landscape displays mesquite, shinnery oak, yucca, desert sage, fourwing saltbush, snakeweed, and bunch grasses

Existing Vegetation at the well pad attachment:

Existing Vegetation Community at the road: Refer to "Existing Vegetation at the well pad"

Existing Vegetation Community at the road attachment:

Existing Vegetation Community at the pipeline: Refer to "Existing Vegetation at the well pad"

Existing Vegetation Community at the pipeline attachment:

Existing Vegetation Community at other disturbances: None

Existing Vegetation Community at other disturbances attachment:

Non native seed used? N

Non native seed description:

Seedling transplant description:

Will seedlings be transplanted for this project? N

Seedling transplant description attachment:

Will seed be harvested for use in site reclamation? N

Operator Name: KAISER FRANCIS OIL COMPANY**Well Name:** BELL LAKE UNIT NORTH**Well Number:** 210H**Seed harvest description:****Seed harvest description attachment:****Seed Management****Seed Table****Seed Summary****Total pounds/Acre:****Seed Type****Pounds/Acre****Seed reclamation attachment:****Operator Contact/Responsible Official Contact Info****First Name:****Last Name:****Phone:****Email:****Seedbed prep:****Seed BMP:****Seed method:****Existing invasive species?** N**Existing invasive species treatment description:****Existing invasive species treatment attachment:****Weed treatment plan description:** No invasive species present. Standard regular maintenance to maintain a clear location and road.**Weed treatment plan attachment:****Monitoring plan description:** Identify areas supporting weeds prior to construction; prevent the introduction and spread of weeds from construction equipment during construction; and contain weed seeds and propagules by preventing segregated topsoil from being spread to adjacent areas. No invasive species present. Standard regular maintenance to maintain a clear location and road.**Monitoring plan attachment:****Success standards:** To maintain all disturbed areas as per Gold Book standards**Pit closure description:** N/A**Pit closure attachment:****Section 11 - Surface Ownership**

Operator Name: KAISER FRANCIS OIL COMPANY

Well Name: BELL LAKE UNIT NORTH

Well Number: 210H

Disturbance type: WELL PAD

Describe:

Surface Owner: STATE GOVERNMENT

Other surface owner description:

BIA Local Office:

BOR Local Office:

COE Local Office:

DOD Local Office:

NPS Local Office:

State Local Office: NM STATE LAND OFFICE, 602 N CANAL ST B, CARLSBAD, NM 88220

Military Local Office:

USFWS Local Office:

Other Local Office:

USFS Region:

USFS Forest/Grassland:

USFS Ranger District:

Disturbance type: NEW ACCESS ROAD

Describe:

Surface Owner: STATE GOVERNMENT

Other surface owner description:

BIA Local Office:

BOR Local Office:

COE Local Office:

DOD Local Office:

NPS Local Office:

State Local Office: NM STATE LAND OFFICE, 602 N CANAL STE B, CARLSBAD NM 88220

Military Local Office:

USFWS Local Office:

Other Local Office:

USFS Region:

USFS Forest/Grassland:

USFS Ranger District:

Operator Name: KAISER FRANCIS OIL COMPANY

Well Name: BELL LAKE UNIT NORTH

Well Number: 210H

Section 12 - Other Information

Right of Way needed? N

Use APD as ROW?

ROW Type(s):

ROW Applications

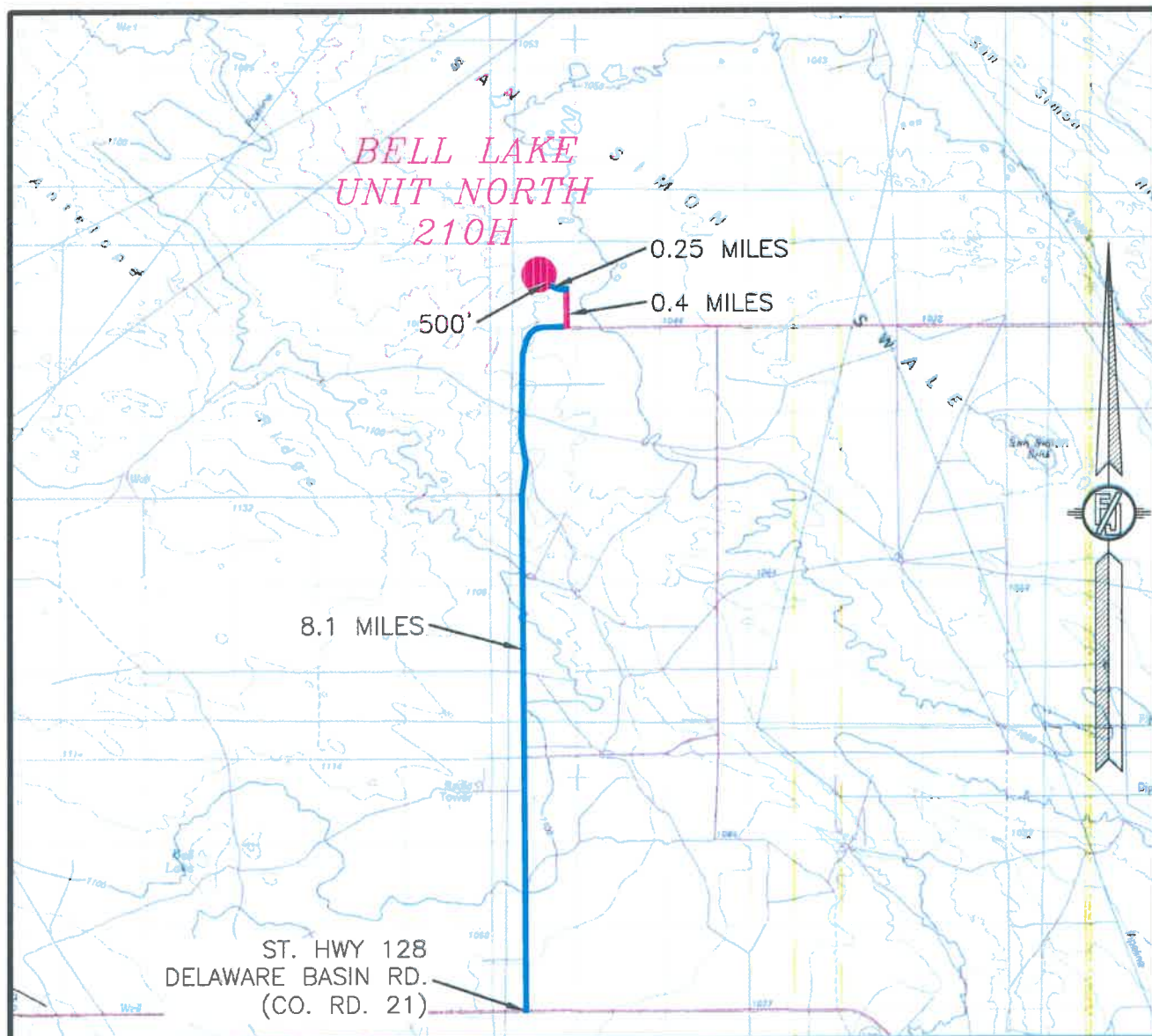
SUPO Additional Information:

Use a previously conducted onsite? Y

Previous Onsite information: Onsite conducted 10/24/2019 by Nik MacPhee (BLM), Eric Hansen (Kaiser-Francis) and Frank Jaramillo (Madron Surveying).

Other SUPO Attachment

SECTION 6, TOWNSHIP 23 SOUTH, RANGE 34 EAST, N.M.P.M.
LEA COUNTY, STATE OF NEW MEXICO
VICINITY MAP



DISTANCES IN MILES

NOT TO SCALE

DIRECTIONS TO LOCATION

FROM THE INTERSECTION OF ST. HWY. 128 & DELAWARE BASIN RD. GO NORTH ON DELAWARE BASIN RD. APPROX. 8.1 MILES WHERE ROAD CURVES RIGHT (EAST) AT THE END OF CURVE THE SECOND LEASE ROAD KAISER-FRANCIS SIGNS ON LEFT (NORTH), TURN LEFT (NORTH) ON LEASE ROAD, GO NORTH APPROX. 0.4 MILES, ROAD TURNS LEFT (WEST) GO WEST APPROX. 0.25 MILES TO A ROAD LATH WITH RED & WHITE FLAGGING, FOLLOW ROAD LATHS NORTH APPROX. 500' TO THE SOUTHEAST PAD CORNER FOR THIS LOCATION.

KAISER-FRANCIS OIL COMPANY
BELL LAKE UNIT NORTH 210H
LOCATED 2035 FT. FROM THE NORTH LINE
AND 1985 FT. FROM THE EAST LINE OF
SECTION 6, TOWNSHIP 23 SOUTH,
RANGE 34 EAST, N.M.P.M.
LEA COUNTY, STATE OF NEW MEXICO

DECEMBER 19, 2019

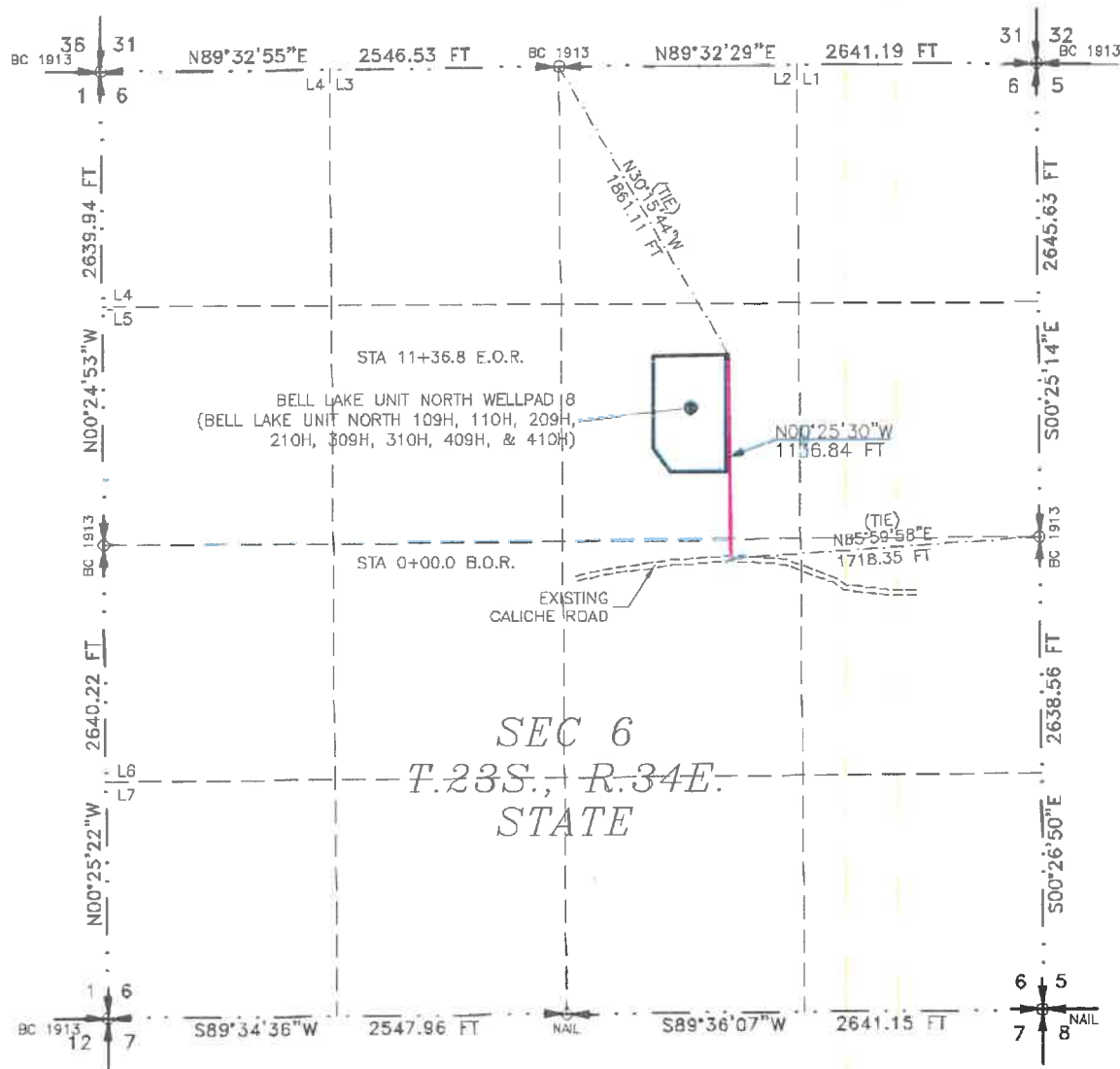
SURVEY NO. 7647A

MADRON SURVEYING, INC. 301 SOUTH CANAL (575) 234-3341 CARLSBAD, NEW MEXICO

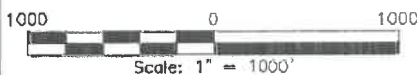
ACCESS ROAD PLAT

ACCESS ROAD FOR BELL LAKE UNIT NORTH WELLPAD 8
(BELL LAKE UNIT NORTH 109H, 110H, 209H, 210H, 309H, 310H, 409H, & 410H)

KAISER-FRANCIS OIL COMPANY
CENTERLINE SURVEY OF AN ACCESS ROAD CROSSING
SECTION 6, TOWNSHIP 23 SOUTH, RANGE 34 EAST, N.M.P.M.
LEA COUNTY, STATE OF NEW MEXICO
DECEMBER 19, 2019



SEE NEXT SHEET (2-2) FOR DESCRIPTION

**GENERAL NOTES**

- 1.) THE INTENT OF THIS ROUTE SURVEY IS TO ACQUIRE AN EASEMENT.
- 2.) BASIS OF BEARING AND DISTANCE IS NMSP EAST (NAD83) MODIFIED TO SURFACE COORDINATES. NAD 83 (FEET) AND NAVD 88 (FEET) COORDINATE SYSTEMS USED IN THE SURVEY.

SHEET: 1-2

MADRON SURVEYING, INC.

SURVEYOR CERTIFICATE

I, FILIMON F. JARAMILLO, A NEW MEXICO PROFESSIONAL SURVEYOR NO. 12797, HEREBY CERTIFY THAT I HAVE CONDUCTED AND AM RESPONSIBLE FOR THIS SURVEY, THAT THIS SURVEY IS TRUE AND CORRECT TO THE BEST OF MY KNOWLEDGE AND BELIEF, AND THAT THIS SURVEY AND PLAT MEET THE MINIMUM STANDARDS FOR LAND SURVEYING IN THE STATE OF NEW MEXICO.

IN WITNESS WHEREOF, THIS CERTIFICATE IS EXECUTED AT CARLSBAD.

NEW MEXICO, THIS 21ST DAY OF DECEMBER 2019.

MADRON SURVEYING, INC.
301 SOUTH CANAL
CARLSBAD, NEW MEXICO 88220
Phone (575) 234-3341

SURVEY NO. 7647A

CARLSBAD, NEW MEXICO

ACCESS ROAD PLAT

ACCESS ROAD FOR BELL LAKE UNIT NORTH WELLPAD 8
(BELL LAKE UNIT NORTH 109H, 110H, 209H, 210H, 309H, 310H, 409H, & 410H)

KAISER-FRANCIS OIL COMPANY
CENTERLINE SURVEY OF AN ACCESS ROAD CROSSING
SECTION 6, TOWNSHIP 23 SOUTH, RANGE 34 EAST, N.M.P.M.
LEA COUNTY, STATE OF NEW MEXICO
DECEMBER 19, 2019

DESCRIPTION

A STRIP OF LAND 30 FEET WIDE CROSSING STATE OF NEW MEXICO LAND IN SECTION 6, TOWNSHIP 23 SOUTH, RANGE 34 EAST, N.M.P.M., LEA COUNTY, STATE OF NEW MEXICO AND BEING 15 FEET EACH SIDE OF THE FOLLOWING DESCRIBED CENTERLINE SURVEY:

BEGINNING AT A POINT WITHIN THE NW/4 SE/4 OF SAID SECTION 6, TOWNSHIP 23 SOUTH, RANGE 34 EAST, N.M.P.M., WHENCE THE EAST QUARTER CORNER OF SAID SECTION 6, TOWNSHIP 23 SOUTH, RANGE 34 EAST, N.M.P.M. BEARS N85°59'58"E, A DISTANCE OF 1718.35 FEET;
THENCE N00°25'30"W A DISTANCE OF 1136.84 FEET THE TERMINUS OF THIS CENTERLINE SURVEY, WHENCE THE NORTH QUARTER CORNER OF SAID SECTION 6, TOWNSHIP 23, SOUTH, RANGE 34 EAST, N.M.P.M. BEARS N30°15'44"W, A DISTANCE OF 1861.11 FEET;

SAID STRIP OF LAND BEING 1136.84 FEET OR 68.90 RODS IN LENGTH, CONTAINING 0.783 ACRES MORE OR LESS AND BEING ALLOCATED BY FORTIES AS FOLLOWS:

NW/4 SE/4	108.15 L.F.	6.55 RODS	0.074 ACRES
SW/4 NE/4	1028.69 L.F.	62.35 RODS	0.708 ACRES

GENERAL NOTES

1.) THE INTENT OF THIS ROUTE SURVEY IS TO ACQUIRE AN EASEMENT.

2.) BASIS OF BEARING AND DISTANCE IS NMSP EAST (NAD83) MODIFIED TO SURFACE COORDINATES. NAD 83 (FEET) AND NAVD 88 (FEET) COORDINATE SYSTEMS USED IN THE SURVEY.

SHEET: 2-2

MADRON SURVEYING, INC. 301 SOUTH CANAL CARLSBAD, NEW MEXICO (575) 234-3341

SURVEYOR CERTIFICATE

I, FILIMON F. JARAMILLO, A NEW MEXICO PROFESSIONAL SURVEYOR NO. 12797, HEREBY CERTIFY THAT I HAVE CONDUCTED AND AM RESPONSIBLE FOR THIS SURVEY, THAT THIS SURVEY IS TRUE AND CORRECT TO THE BEST OF MY KNOWLEDGE AND BELIEF, AND THAT THIS SURVEY AND PLAT MEET THE MINIMUM STANDARDS FOR LAND SURVEYING IN THE STATE OF NEW MEXICO.

IN WITNESS WHEREOF, THIS CERTIFICATE IS EXECUTED AT CARLSBAD, NEW MEXICO, THIS 21ST DAY OF DECEMBER 2019

FILIMON F. JARAMILLO PLS. 12797

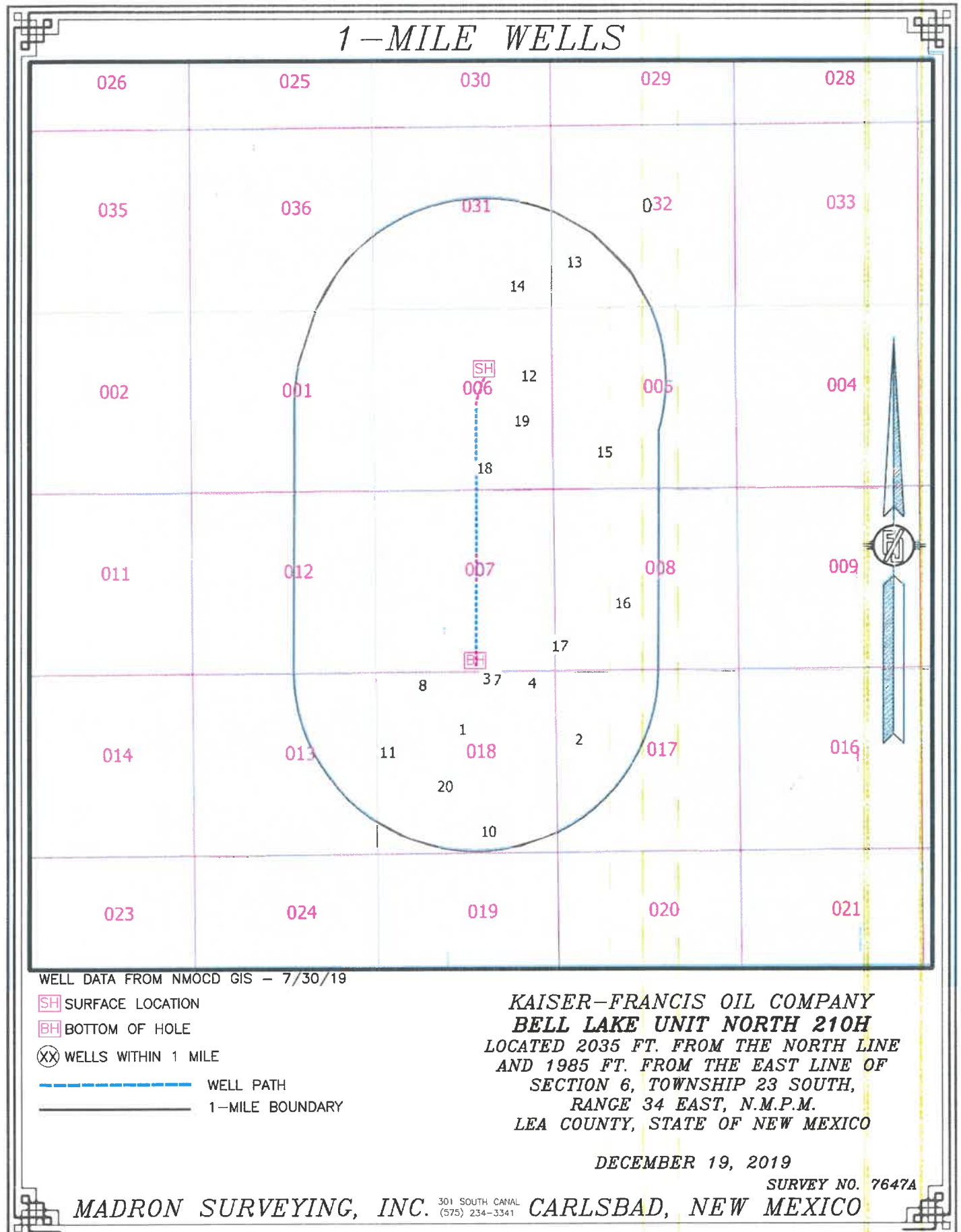
MADRON SURVEYING, INC.
301 SOUTH CANAL
CARLSBAD, NEW MEXICO 88220
Phone (575) 234-3341

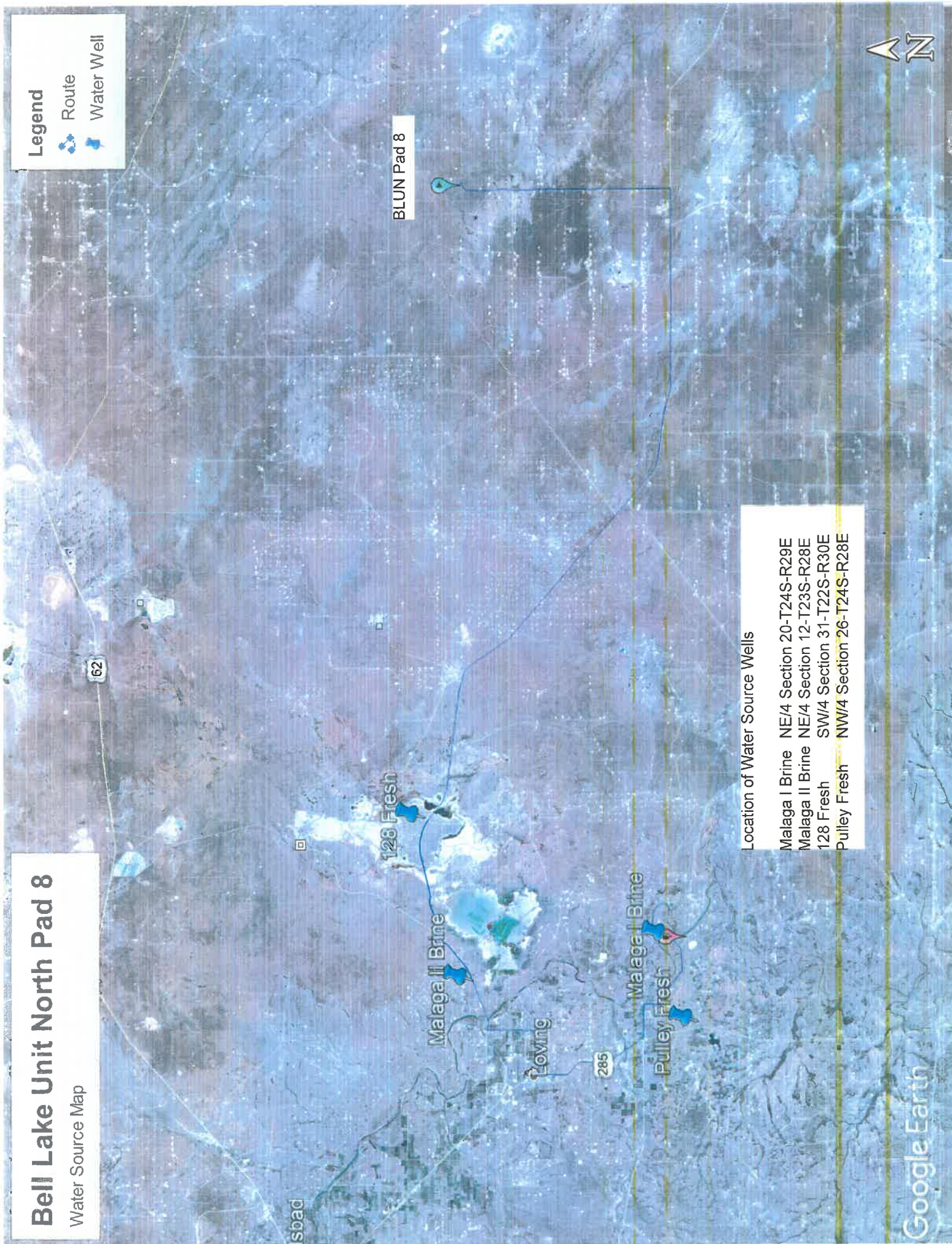
SURVEY NO. 7647A

BLUN 210H

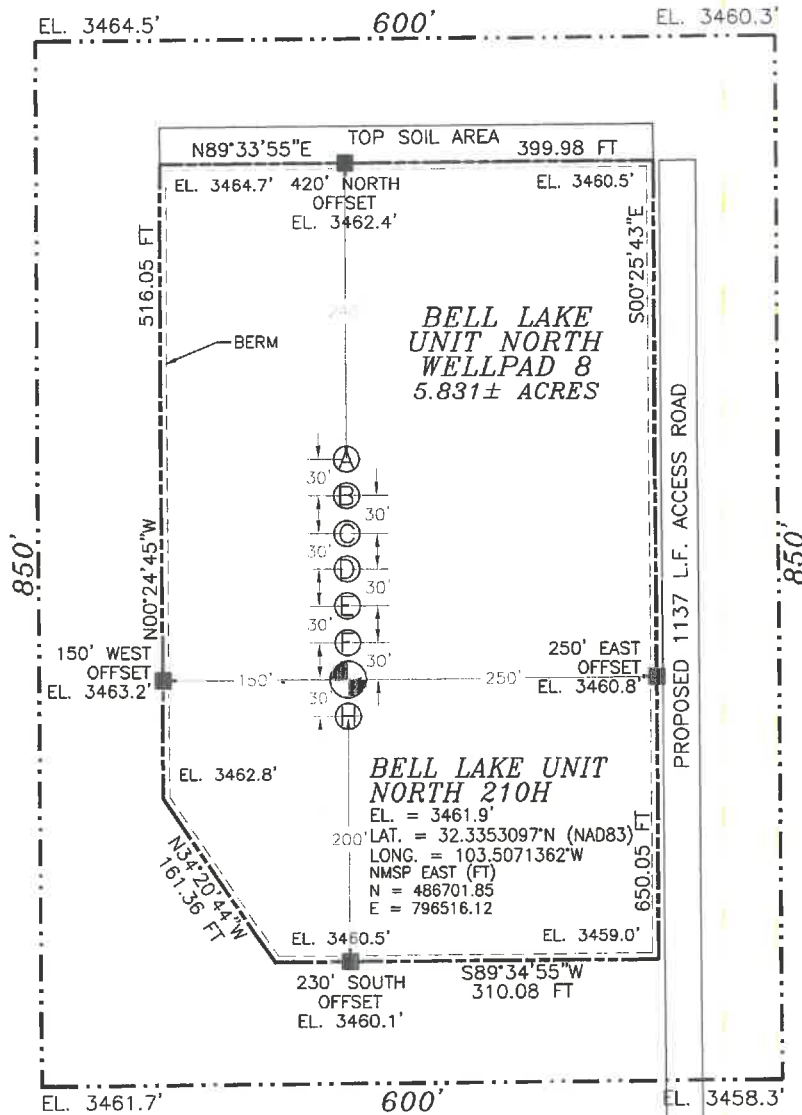
1-Mile Wells

ID	API	WELLNAME	ULSTR	OGRID_NAME	ELEV	DEPTH	MEAS	TOT	APR_DATE	LATITUDE	LONGITUDE	POOL_ID_LI
1	30-025-26508	BELL LAKE 7909 JV-P #001	F-18-235-34E	BTA OIL PRODUCERS	3496	99999	14755	6/1/1980	32.3073921	-103.5093613	[71880] BELL LAKE, DEVONIAN, MID (GAS)	
2	30-025-35033	PALOMA BLANCO 17 FEDERAL #001	E-17-235-34E	DEVON ENERGY PROD CO, LP	3470	13797	13797	3/27/2000	32.3064728	-103.4985046	[5150] BELL LAKE, B5,N; [5166] BELL LAKE, DELW,N; [71920] BELL LAKE, MRW,N(GAS)	
3	30-025-42917	STARCASTER 18 FEDERAL COM #003H	B-18-235-34E	BTA OIL PRODUCERS, LLC	3490	14995	10396	10/15/2015	32.3114532	-103.5070874	[5150] BELL LAKE, BONE SPRING, NORTH	
4	30-025-42025	STARCASTER 18 FEDERAL COM #004H	A-18-235-34E	BTA OIL PRODUCERS, LLC	3479	14836	10394	8/5/2014	32.3110123	-103.5027847	[5150] BELL LAKE, BONE SPRING, NORTH	
7	30-025-46151	STARCASTER 7909 FEDERAL COM #008H	B-18-235-34E	BTA OIL PRODUCERS, LLC	3489	0	0	6/19/2019	32.3113002	-103.5060687	[5150] BELL LAKE, BONE SPRING, NORTH	
7	30-025-46150	STARCASTER 7909 FEDERAL COM #007H	B-18-235-34E	BTA OIL PRODUCERS, LLC	3488	0	0	6/19/2019	32.3113002	-103.5061665	[5150] BELL LAKE, BONE SPRING, NORTH	
8	30-025-46149	STARCASTER 7909 FEDERAL COM #006H	C-18-235-34E	BTA OIL PRODUCERS, LLC	3507	0	0	6/19/2019	32.310424	-103.513079	[5150] BELL LAKE, BONE SPRING, NORTH	
8	30-025-46148	STARCASTER 7909 FEDERAL COM #005H	C-18-235-34E	BTA OIL PRODUCERS, LLC	3507	0	0	6/19/2019	32.310424	-103.513177	[5150] BELL LAKE, BONE SPRING, NORTH	
8	30-025-43213	STARCASTER 18 FEDERAL COM #002H	C-18-235-34E	BTA OIL PRODUCERS, LLC	3507	15228	10434	4/29/2016	32.310973	-103.5130795	[5150] BELL LAKE, BONE SPRING, NORTH	
8	30-025-43388	STARCASTER 18 FEDERAL COM #001H	C-18-235-34E	BTA OIL PRODUCERS, LLC	3509	15370	10590	7/29/2016	32.3108492	-103.5126964	[5150] BELL LAKE, BONE SPRING, NORTH	
10	30-025-34827	BELL LAKE 7909 JV-P #002	O-18-235-34E	BTA OIL PRODUCERS, LLC	3501	13630	13630	1/3/2000	32.2992172	-103.5070343	[97363] BELL LAKE, UPPER PENN, NORTH (GAS)	
11	30-025-41481	BELL LAKE 18 23 34 #001	2-18-235-34E	CHEVRON U S A INC	3525	5040	5037	11/5/2013	32.3056374	-103.5164185	[5150] BELL LAKE, BONE SPRING, NORTH	
12	30-025-33077	NORTH BELL LAKE FEDERAL #003	H-06-235-34E	KAISER-FRANCIS OIL CO	3456	17540	17540	8/25/1995	32.3356552	-103.5028305	[71840] BELL LAKE, DEVONIAN, N (GAS); [96385] BELL LAKE, ELLENBURGER, N(GAS)	
13	30-025-35118	BELL LAKE UNIT #021	L-32-235-34E	KAISER-FRANCIS OIL CO	3431	13407	13407	8/5/2000	32.3446426	-103.4985428	[96665] OJO CHISO, MRW, W(GAS); [97630] BELL LAKE, DELW,NE; [97724] WC-025 G-08 S223432L, WLF	
14	30-025-35592	BELL LAKE UNIT #022	P-31-225-34E	KAISER-FRANCIS OIL CO	341	13430	13430	3/23/2001	32.3427773	-103.503891	[96665] OJO CHISO, MORROW, WEST (GAS)	
15	30-025-32672	NORTH BELL LAKE FEDERAL #002	N-05-235-34E	KAISER-FRANCIS OIL CO	3443	17710	17710	9/21/1994	32.3294563	-103.4958344	[77680] GRAMA RIDGE, MRW (GAS); [96385] BELL LAKE, ELLEN N(GAS); [97630] BELL LAKE, DELW,NE	
16	30-025-24771	NORTH BELL LAKE UNIT 4 H015	K-08-235-34E	KAISER-FRANCIS OIL CO	3445	13589	13589	6/6/1974	32.3173599	-103.4942551	[71920] BELL LAKE, MORROW, NORTH (GAS); [96100] SWD, DELAWARE	
17	30-025-44387	LEVIATHAN STATE SWD #001	M-08-235-34E	KAISER-FRANCIS OIL CO	3470	0	0	1/24/2018	32.3139656	-103.5007005	[97869] SWD, DEVONIAN-SILURIAN	
18	30-025-08483	BELL LAKE UNIT #006	O-06-235-34E	KAISER-FRANCIS OIL CO	3485	16506	16506	1/1/1900	32.3282585	-103.507103	[71840] BELL LAKE, DEVONIAN, NORTH (GAS)	
19	30-025-43033	BELL LAKE UNIT NORTH #230H	I-06-235-34E	KAISER-FRANCIS OIL CO	3456	18370	10226	1/19/2016	32.332037	-103.503544	[5150] BELL LAKE, BONE SPRING, NORTH	
20	30-025-20261	PRE-ONGARD WELL #009	K-18-235-34E	PRE-ONGARD WELL OPER	0	0	8697	1/1/1900	32.3028488	-103.5110779	[5150] BELL LAKE, BONE SPRING, NORTH	





SECTION 6, TOWNSHIP 23 SOUTH, RANGE 34 EAST, N.M.P.M.
LEA COUNTY, STATE OF NEW MEXICO
SITE MAP



- Ⓐ BELL LAKE UNIT NORTH 110H
- Ⓑ BELL LAKE UNIT NORTH 109H
- Ⓒ BELL LAKE UNIT NORTH 310H
- Ⓓ BELL LAKE UNIT NORTH 309H
- Ⓔ BELL LAKE UNIT NORTH 410H
- Ⓕ BELL LAKE UNIT NORTH 409H
- Ⓖ BELL LAKE UNIT NORTH 210H
- Ⓗ BELL LAKE UNIT NORTH 209H



015 75 150 300

SCALE 1" = 150'

DIRECTIONS TO LOCATION

FROM THE INTERSECTION OF ST. HWY. 128 & DELAWARE BASIN RD. GO NORTH ON DELAWARE BASIN RD. APPROX. 8.1 MILES WHERE ROAD CURVES RIGHT (EAST) AT THE END OF CURVE THE SECOND LEASE ROAD KAISER-FRANCES SIGNS ON LEFT (NORTH), TURN LEFT (NORTH) ON LEASE ROAD, GO NORTH APPROX. 0.4 MILES. ROAD TURNS LEFT (WEST) GO WEST APPROX. 0.25 MILES TO A ROAD LATH WITH RED & WHITE FLAGGING, FOLLOW ROAD LATHS NORTH APPROX. 500' TO THE SOUTH-EAST PAD CORNER FOR THIS LOCATION.

I, FILIMON F. J. SURVEYOR, COUNTY OF LEA, STATE OF NEW MEXICO, DO HEREBY CERTIFY THAT THIS SURVEY, THAT I HAVE MADE, IS IN ACCORDANCE WITH THE KNOWLEDGE AND STANDARDS OF THE PROFESSION.

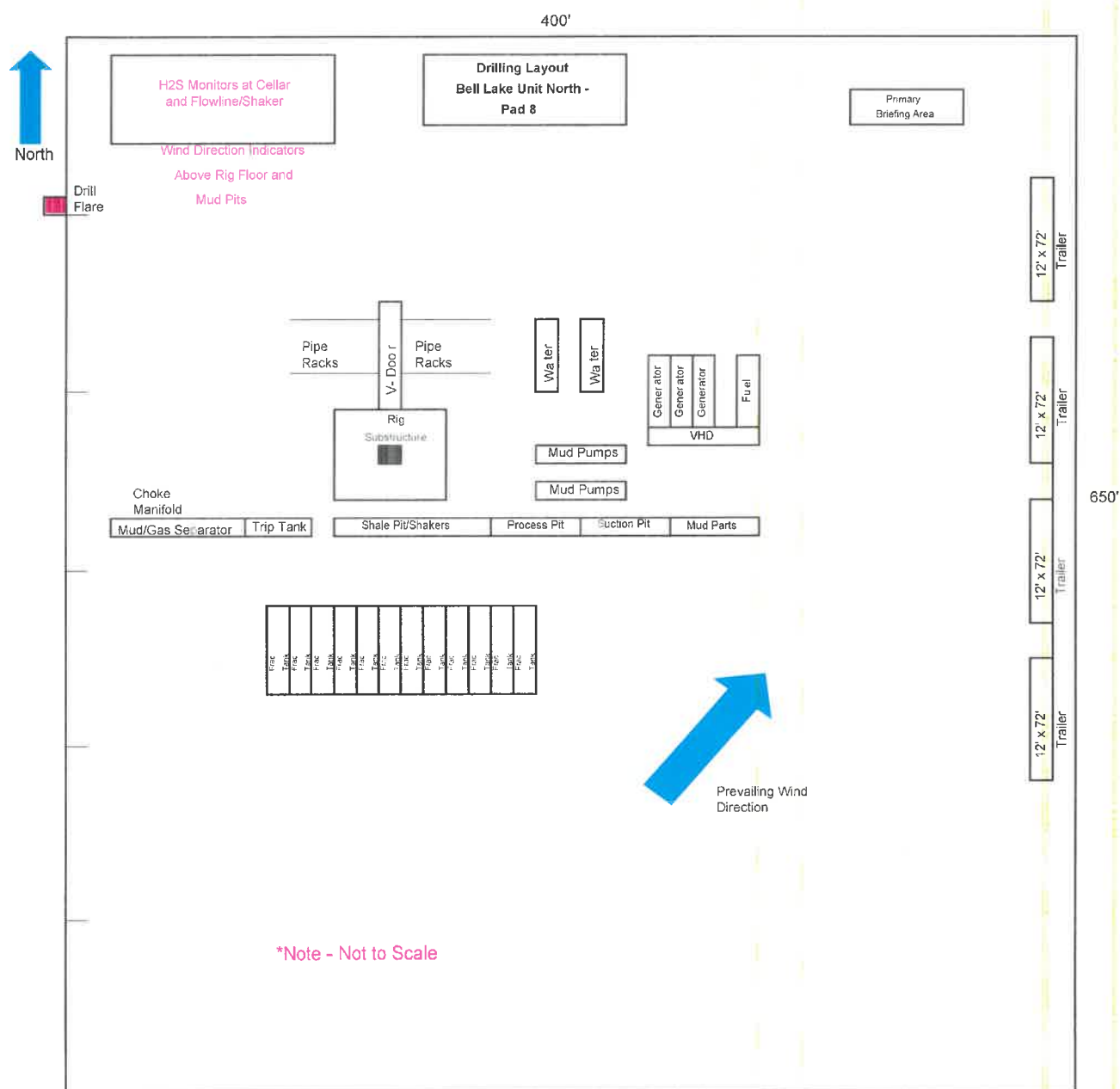
MADRON SURVEYING, INC.

KAISER-FRANCIS OIL COMPANY
BELL LAKE UNIT NORTH 210H
LOCATED 2035 FT. FROM THE NORTH LINE
AND 1985 FT. FROM THE EAST LINE OF
SECTION 6, TOWNSHIP 23 SOUTH,
RANGE 34 EAST, N.M.P.M.
LEA COUNTY, STATE OF NEW MEXICO

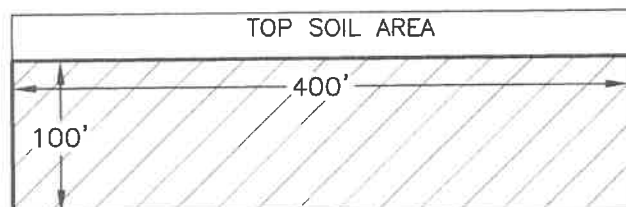
DECEMBER 19, 2019

SURVEY NO. 7647A

CARLSBAD, NEW MEXICO



SECTION 6, TOWNSHIP 23 SOUTH, RANGE 34 EAST, N.M.P.M.
LEA COUNTY, STATE OF NEW MEXICO
INTERIM SITE RECLAMATION



BELL LAKE
UNIT NORTH
WELLPAD 8
5.831± ACRES

Ⓐ
Ⓑ
Ⓒ
Ⓓ
Ⓔ
Ⓕ
Ⓖ
Ⓗ

PROPOSED 1137 L.F. ACCESS ROAD

- Ⓐ BELL LAKE UNIT NORTH 110H
- Ⓑ BELL LAKE UNIT NORTH 109H
- Ⓒ BELL LAKE UNIT NORTH 310H
- Ⓓ BELL LAKE UNIT NORTH 309H
- Ⓔ BELL LAKE UNIT NORTH 410H
- Ⓕ BELL LAKE UNIT NORTH 409H
- Ⓖ BELL LAKE UNIT NORTH 210H
- Ⓗ BELL LAKE UNIT NORTH 209H



⬜ DENOTES RECLAMATION AREA
0.918± ACRES RECLAMATION AREA

012 60 120 240
SCALE 1" = 120'

KAISER-FRANCIS OIL COMPANY
BELL LAKE UNIT NORTH 210H
LOCATED 2035 FT. FROM THE NORTH LINE
AND 1985 FT. FROM THE EAST LINE OF
SECTION 6, TOWNSHIP 23 SOUTH,
RANGE 34 EAST, N.M.P.M.
LEA COUNTY, STATE OF NEW MEXICO

DECEMBER 19, 2019

SURVEY NO. 7647A

MADRON SURVEYING, INC.

301 SOUTH CANAL
(575) 234-3341

CARLSBAD, NEW MEXICO



U.S. Department of the Interior
BUREAU OF LAND MANAGEMENT

PWD Data Report

11/30/2020

APD ID: 10400054105

Submission Date: 02/09/2020

Operator Name: KAISER FRANCIS OIL COMPANY

Well Name: BELL LAKE UNIT NORTH

Well Number: 210H

Well Type: OIL WELL

Well Work Type: Drill

Section 1 - General

Would you like to address long-term produced water disposal? NO

Section 2 - Lined Pits

Would you like to utilize Lined Pit PWD options? N

Produced Water Disposal (PWD) Location:

PWD surface owner:

PWD disturbance (acres):

Lined pit PWD on or off channel:

Lined pit PWD discharge volume (bbl/day):

Lined pit specifications:

Pit liner description:

Pit liner manufacturers information:

Precipitated solids disposal:

Describe precipitated solids disposal:

Precipitated solids disposal permit:

Lined pit precipitated solids disposal schedule:

Lined pit precipitated solids disposal schedule attachment:

Lined pit reclamation description:

Lined pit reclamation attachment:

Leak detection system description:

Leak detection system attachment:

Operator Name: KAISER FRANCIS OIL COMPANY

Well Name: BELL LAKE UNIT NORTH

Well Number: 210H

Lined pit Monitor description:

Lined pit Monitor attachment:

Lined pit: do you have a reclamation bond for the pit?

Is the reclamation bond a rider under the BLM bond?

Lined pit bond number:

Lined pit bond amount:

Additional bond information attachment:

Section 3 - Unlined Pits

Would you like to utilize Unlined Pit PWD options? N

Produced Water Disposal (PWD) Location:

PWD disturbance (acres):

PWD surface owner:

Unlined pit PWD on or off channel:

Unlined pit PWD discharge volume (bbl/day):

Unlined pit specifications:

Precipitated solids disposal:

Describe precipitated solids disposal:

Precipitated solids disposal permit:

Unlined pit precipitated solids disposal schedule:

Unlined pit precipitated solids disposal schedule attachment:

Unlined pit reclamation description:

Unlined pit reclamation attachment:

Unlined pit Monitor description:

Unlined pit Monitor attachment:

Do you propose to put the produced water to beneficial use?

Beneficial use user confirmation:

Estimated depth of the shallowest aquifer (feet):

Does the produced water have an annual average Total Dissolved Solids (TDS) concentration equal to or less than that of the existing water to be protected?

TDS lab results:

Geologic and hydrologic evidence:

State authorization:

Unlined Produced Water Pit Estimated percolation:

Unlined pit: do you have a reclamation bond for the pit?

Operator Name: KAISER FRANCIS OIL COMPANY**Well Name:** BELL LAKE UNIT NORTH**Well Number:** 210H**Is the reclamation bond a rider under the BLM bond?****Unlined pit bond number:****Unlined pit bond amount:****Additional bond information attachment:**

Section 4 - Injection

Would you like to utilize Injection PWD options? N**Produced Water Disposal (PWD) Location:****PWD surface owner:****PWD disturbance (acres):****Injection PWD discharge volume (bbl/day):****Injection well mineral owner:****Injection well type:****Injection well number:****Injection well name:****Assigned injection well API number?****Injection well API number:****Injection well new surface disturbance (acres):****Minerals protection information:****Mineral protection attachment:****Underground Injection Control (UIC) Permit?****UIC Permit attachment:**

Section 5 - Surface Discharge

Would you like to utilize Surface Discharge PWD options? N**Produced Water Disposal (PWD) Location:****PWD surface owner:****PWD disturbance (acres):****Surface discharge PWD discharge volume (bbl/day):****Surface Discharge NPDES Permit?****Surface Discharge NPDES Permit attachment:****Surface Discharge site facilities information:****Surface discharge site facilities map:**

Section 6 - Other

Would you like to utilize Other PWD options? N**Produced Water Disposal (PWD) Location:****PWD surface owner:****PWD disturbance (acres):****Other PWD discharge volume (bbl/day):**

Operator Name: KAISER FRANCIS OIL COMPANY

Well Name: BELL LAKE UNIT NORTH

Well Number: 210H

Other PWD type description:

Other PWD type attachment:

Have other regulatory requirements been met?

Other regulatory requirements attachment:



U.S. Department of the Interior
BUREAU OF LAND MANAGEMENT

Bond Info Data Report

11/30/2020

APD ID: 10400054105

Submission Date: 02/09/2020

Highlighted data
reflects the most
recent changes

Operator Name: KAISER FRANCIS OIL COMPANY

Well Name: BELL LAKE UNIT NORTH

Well Number: 210H

[Show Final Text](#)

Well Type: OIL WELL

Well Work Type: Drill

Bond Information

Federal/Indian APD: FED

BLM Bond number: WYB000055

BIA Bond number:

Do you have a reclamation bond? NO

Is the reclamation bond a rider under the BLM bond?

Is the reclamation bond BLM or Forest Service?

BLM reclamation bond number:

Forest Service reclamation bond number:

Forest Service reclamation bond attachment:

Reclamation bond number:

Reclamation bond amount:

Reclamation bond rider amount:

Additional reclamation bond information attachment:

District I

1625 N. French Dr., Hobbs, NM 88240
Phone: (575) 393-6161 Fax: (575) 393-0720

District II

811 S. First St., Artesia, NM 88210
Phone: (575) 748-1283 Fax: (575) 748-9720

District III

1000 Rio Brazos Rond, Aztec, NM 87410
Phone: (505) 334-6178 Fax: (505) 334-6170

District IV

1220 S. St. Francis Dr., Santa Fe, NM 87505
Phone: (505) 476-3460 Fax: (505) 476-3462

State of New Mexico
Energy, Minerals & Natural Resources Department
OIL CONSERVATION DIVISION
1220 South St. Francis Dr.
Santa Fe, NM 87505

Form C-102

Revised August 1, 2011

Submit one copy to appropriate

District Office

☐ AMENDED REPORT

WELL LOCATION AND ACREAGE DEDICATION PLAT

¹ API Number 30-025- 30-025-48551		² Pool Code 98259		³ Pool Name Ojo Chiso; Bone Spring, Southwest					
⁴ Property Code 316707		⁵ Property Name BELL LAKE UNIT NORTH						⁶ Well Number 210H	
⁷ OGRID No. 12361		⁸ Operator Name KAISER-FRANCIS OIL COMPANY						⁹ Elevation 3461.9	
¹⁰ Surface Location									
UL or lot no. G	Section 6	Township 23 S	Range 34 E	Lot Idn	Feet from the 2035	North/South line NORTH	Feet from the 1985	East/West line EAST	County LEA
¹¹ Bottom Hole Location If Different From Surface									
UL or lot no. O	Section 7	Township 23 S	Range 34E	Lot Idn	Feet from the 100	North/South line SOUTH	Feet from the 2290	East/West line EAST	County LEA
¹² Dedicated Acres 480		¹³ Joint or Infill		¹⁴ Consolidation Code		¹⁵ Order No. R-14527A			

No allowable will be assigned to this completion until all interests have been consolidated or a non-standard unit has been approved by the division.

<p>NW CORNER SEC. 6 LAT. = 32.3409003°N LONG. = 103.5175014°W NMSP EAST (FT) N = 488711.17 E = 793299.16</p> <p>W/4 CORNER SEC. 6 LAT. = 32.336453°N LONG. = 103.5175046°W NMSP EAST (FT) N = 486071.76 E = 793318.27</p> <p>SECTION CORNER LAT. = 32.3263895°N LONG. = 103.5175066°W NMSP EAST (FT) N = 483432.09 E = 793337.75</p> <p>W/4 CORNER SEC. 7 LAT. = 32.3118795°N LONG. = 103.5175128°W NMSP EAST (FT) N = 478153.30 E = 793376.02</p>		<p>N89°32'55"E 2546.53 FT N89°32'29"E 2641.19 FT N89°34'36"E 2547.96 FT N89°36'07"E 2641.15 FT N89°33'27"W 2551.95 FT S89°34'51"W 2649.40 FT</p> <p>N/4 CORNER SEC. 6 LAT. = 32.3409018°N LONG. = 103.5092579°W NMSP EAST (FT) N = 488731.23 E = 795845.16</p> <p>BELL LAKE UNIT NORTH 210H ELEV. = 3461.9' LAT. = 32.3353097°N (NAD83) LONG. = 103.5071362°W NMSP EAST (FT) N = 486701.85 E = 796516.12</p> <p>FIRST TAKE POINT 2600' FSL, 2200' FEL LAT. = 32.3335320°N LONG. = 103.5078328°W</p> <p>QUARTER CORNER LAT. = 32.3263876°N LONG. = 103.5092598°W NMSP EAST (FT) N = 483450.91 E = 795885.19</p> <p>S/4 CORNER SEC. 7 LAT. = 32.3118800°N LONG. = 103.5092544°W NMSP EAST (FT) N = 478173.00 E = 795927.44</p>		<p>NE CORNER SEC. 6 LAT. = 32.3409038°N LONG. = 103.5007079°W NMSP EAST (FT) N = 488752.37 E = 796485.80</p> <p>E/4 CORNER SEC. 6 LAT. = 32.336332°N LONG. = 103.5007116°W NMSP EAST (FT) N = 486107.27 E = 798505.21</p> <p>SECTION CORNER LAT. = 32.3263820°N LONG. = 103.5007113°W NMSP EAST (FT) N = 483469.26 E = 798525.81</p> <p>E/4 CORNER SEC. 7 LAT. = 32.3191330°N LONG. = 103.5006990°W NMSP EAST (FT) N = 480832.11 E = 798550.10</p> <p>SE CORNER SEC. 7 LAT. = 32.3118770°N LONG. = 103.5006806°W NMSP EAST (FT) N = 478192.39 E = 798576.30</p>	
--	--	--	--	---	--

¹⁷ OPERATOR CERTIFICATION

I hereby certify that the information contained herein is true and complete to the best of my knowledge and belief, and that this organization either owns a working interest or unleased mineral interest in the land including the proposed bottom hole location or has a right to drill this well at this location pursuant to a contract with an owner of such a mineral or working interest, or to a voluntary pooling agreement or a compulsory pooling order heretofore entered by the division

Stormi Davis 2/9/20
Signature Date

Stormi Davis
Printed Name

ssdavis104@gmail.com
E-mail Address

¹⁸ SURVEYOR CERTIFICATION

I hereby certify that the well location shown on this plat was plotted from field notes of actual surveys made by me or under my supervision, and that the same is true and correct to the best of my belief.

DECEMBER 19, 2019
Date of Survey

[Signature]
Signature and Seal of Professional Surveyor

Certificate Number: 12797
NO 7647A

District I
1625 N. French Dr., Hobbs, NM 88240
District II
811 S. First St., Artesia, NM 88210
District III
1000 Rio Brazos Road, Aztec, NM 87410
District IV
1220 S. St. Francis Dr., Santa Fe, NM 87505

State of New Mexico
Energy, Minerals and Natural Resources Department
Oil Conservation Division
1220 South St. Francis Dr.
Santa Fe, NM 87505

Submit Original
to Appropriate
District Office

GAS CAPTURE PLAN

Date: 01/26/2020

☒ Original

Operator & OGRID No.: Kaiser-Francis Oil Company, 12361

☐ Amended - Reason for Amendment: _____

This Gas Capture Plan outlines actions to be taken by the Operator to reduce well/production facility flaring/venting for new completion (new drill, recomple to new zone, re-frac) activity.

Note: Form C-129 must be submitted and approved prior to exceeding 60 days allowed by Rule (Subsection A of 19.15.18.12 NMAC).

Well(s)/Production Facility – Name of facility

The well(s) that will be located at the production facility are shown in the table below.

Well Name	API	Well Location (ULSTR)	Footages	Expected MCF/D	Flared or Vented	Comments
Bell Lake Unit North 209H	30-025-48551	6-23S-34E		2000	0	
Bell Lake Unit North 210H		6-23S-34E		2000	0	
Bell Lake Unit North 309H		6-23S-34E		2000	0	
Bell Lake Unit North 310H		6-23S-34E		2000	0	
Bell Lake Unit North 409H		6-23S-34E		2000	0	
Bell Lake Unit North 410H		6-23S-34E		2000	0	

Gathering System and Pipeline Notification

Well(s) will be connected to a production facility after flowback operations are complete, if gas transporter system is in place. The gas produced from production facility is dedicated to Targa and will be connected to Targa low/high pressure gathering system located in Lea County, New Mexico. It will require 11,000' of pipeline to connect the facility to low/high pressure gathering system. Kaiser-Francis Oil Company provides (periodically) to Targa a drilling, completion and estimated first production date for wells that are scheduled to be drilled in the foreseeable future. In addition, Kaiser-Francis Oil Company and Targa have periodic conference calls to discuss changes to drilling and completion schedules. Gas from these wells will be processed at Targa Processing Plant located in Sec. 36, Twn. 19S, Rng. 36E, Lea County, New Mexico. The actual flow of the gas will be based on compression operating parameters and gathering system pressures.

Flowback Strategy

After the fracture treatment/completion operations, well(s) will be produced to temporary production tanks and gas will be flared or vented. During flowback, the fluids and sand content will be monitored. When the produced fluids contain minimal sand, the wells will be turned to production facilities. Gas sales should start as soon as the wells start flowing through the production facilities, unless there are operational issues on Targa system at that time. Based on current information, it is Kaiser-Francis Oil Company's belief the system can take this gas upon completion of the well(s).

Safety requirements during cleanout operations from the use of underbalanced air cleanout systems may necessitate that sand and non-pipeline quality gas be vented and/or flared rather than sold on a temporary basis.

Alternatives to Reduce Flaring

Below are alternatives considered from a conceptual standpoint to reduce the amount of gas flared.

- Power Generation – On lease
 - Only a portion of gas is consumed operating the generator, remainder of gas will be flared
- Compressed Natural Gas – On lease
 - Gas flared would be minimal, but might be uneconomical to operate when gas volume declines
- NGL Removal – On lease
 - Plants are expensive, residue gas is still flared, and uneconomical to operate when gas volume declines

Operator Name: KAISER FRANCIS OIL COMPANY**Well Name:** BELL LAKE UNIT NORTH**Well Number:** 210H**Pressure Rating (PSI):** 5M**Rating Depth:** 13000

Equipment: A 5M system will be installed according to Onshore Order #2 consisting of an Annular Preventer, BOP with two rams, a blind ram and safety valves and appropriate handles located on the rig floor. BOP will be equipped with 2 side outlets (choke side shall be a minimum 3 line, and kill side will be a minimum 2 line). Kill line will be installed with (2) valves and a check valve (2 min) of proper pressure rating for the system. Remote kill line (2 min) will be installed and ran to the outer edge of the substructure and be unobstructed. A manual and hydraulic valve (3 min) will be installed on the choke line, 3 chokes will be used with one being remotely controlled. Fill up line will be installed above the uppermost preventer. Pressure gauge of proper pressure rating will be installed on choke manifold. Upper and lower kelly cocks will be utilized with handles readily available in plain sight. A float sub will be available at all times. All connections subject to well pressure will be flanged, welded, or clamped.

Requesting Variance? YES**Variance request:** Flex Hose Variance MultiBowl Wellhead

Testing Procedure: BOP/BOPE will be tested by an independent service company to 250 psi low and the high pressure indicated above per Onshore Order 2 requirements. The System may be upgraded to a higher pressure but still tested to the working pressure listed in the table above. If the system is upgraded all of the components installed will be functional and tested.

Choke Diagram Attachment:

BLUN_210H_Choke_Manifold_20200209125829.pdf

BOP Diagram Attachment:

Cactus_Flex_Hose_16C_Certification_20200206080210.pdf

BLUN_210H_BOP_20200209125855.pdf

BLUN_210H_Wellhead_20200209125855.pdf

Section 3 - Casing

Casing ID	String Type	Hole Size	Csg Size	Condition	Standard	Tapered String	Top Set MD	Bottom Set MD	Top Set TVD	Bottom Set TVD	Top Set MSL	Bottom Set MSL	Calculated casing length MD	Grade	Weight	Joint Type	Collapse SF	Burst SF	Joint SF Type	Joint SF	Body SF Type	Body SF
1	SURFACE	17.5	13.375	NEW	API	N	0	1200	0	1200	3462	2262	1200	J-55	54.5	BUTT	2	4.9	DRY	13.9	DRY	13
2	INTERMEDIATE	12.25	9.625	NEW	API	N	0	4837	0	4825		-1363	4837	HCP-110	40	LT&C	1.9	3.5	DRY	6.6	DRY	6.5
3	PRODUCTION	8.75	5.5	NEW	API	N	0	18407	0	10290		-6828	18407	P-110	20	OTHER - GBCD	2.3	2.7	DRY	3.2	DRY	3.1

Casing Attachments

Operator Name: KAISER FRANCIS OIL COMPANY**Well Name:** BELL LAKE UNIT NORTH**Well Number:** 210H**Casing Attachments**

Casing ID: 1 **String Type:** SURFACE**Inspection Document:****Spec Document:****Tapered String Spec:****Casing Design Assumptions and Worksheet(s):**BLUN_210H_Casing_Assumptions_20200209130324.pdf

Casing ID: 2 **String Type:** INTERMEDIATE**Inspection Document:****Spec Document:****Tapered String Spec:****Casing Design Assumptions and Worksheet(s):**BLUN_210H_Casing_Assumptions_20200209130227.pdf

Casing ID: 3 **String Type:** PRODUCTION**Inspection Document:****Spec Document:****Tapered String Spec:****Casing Design Assumptions and Worksheet(s):**

GBCD_5.5in_Connection_Spec_Sheet_20200124075519.pdf

BLUN_210H_Casing_Assumptions_20200209130305.pdf

Section 4 - Cement

Operator Name: KAISER FRANCIS OIL COMPANY**Well Name:** BELL LAKE UNIT NORTH**Well Number:** 210H

String Type	Lead/Tail	Stage Tool Depth	Top MD	Bottom MD	Quantity(sx)	Yield	Density	Cu Ft	Excess%	Cement type	Additives
SURFACE	Lead		0	1200	700	1.7	13.5	1223	75	HALCEM	4% Bentonite
SURFACE	Tail		0	1200	248	1.3	14.8	331	75	Halcm	0.125 #/sk Poly Flake
INTERMEDIATE	Lead		0	4837	787	2.08	12.5	1644	50	EconoCem	3#/sk Kol Seal
INTERMEDIATE	Tail		0	4872	472	1.3	14.8	628	50	Halcm	none
PRODUCTION	Lead		4000	1840 7	397	3.5	10.5	1386	10	NeoCem	2#/sk Kol Seal
PRODUCTION	Tail		4000	1840 7	1835	1.2	14.5	2245	10	Versacem	none

Section 5 - Circulating Medium

Mud System Type: Closed**Will an air or gas system be Used?** NO**Description of the equipment for the circulating system in accordance with Onshore Order #2:****Diagram of the equipment for the circulating system in accordance with Onshore Order #2:**

Describe what will be on location to control well or mitigate other conditions: Sufficient mud materials to maintain mud properties and meet minimum lost circulation and weight increase requirements will be kept on location at all time.

Describe the mud monitoring system utilized: PVT/Pason/Visual Monitoring

Circulating Medium Table

Top Depth	Bottom Depth	Mud Type	Min Weight (lbs/gal)	Max Weight (lbs/gal)	Density (lbs/cu ft)	Gel Strength (lbs/100 sqft)	PH	Viscosity (CP)	Salinity (ppm)	Filtration (cc)	Additional Characteristics
4825	1029 0	OIL-BASED MUD	8.7	8.9							
1200	4825	OTHER : Diesel- Brine Emulsion	8.7	8.9							
0	1200	OTHER : Fresh Water	8.4	9							

Date: 3/11/2021

To: NMOCD

From: Charlotte Van Valkenburg

Re: Closed-Loop System

It is the intention of Kaiser-Francis Oil Company to use a closed-loop system during drilling of the following well:

Bell Lake Unit North #210H
Sec. 6-23S-34E
Lea Co., NM

A handwritten signature in blue ink, appearing to read "C. Van Valkenburg", is written over the printed name.

Charlotte Van Valkenburg
Mgr., Regulatory Compliance
Kaiser-Francis Oil Company

District I

1625 N. French Dr., Hobbs, NM 88240
Phone:(575) 393-6161 Fax:(575) 393-0720

District II

811 S. First St., Artesia, NM 88210
Phone:(575) 748-1283 Fax:(575) 748-9720

District III

1000 Rio Brazos Rd., Aztec, NM 87410
Phone:(505) 334-6178 Fax:(505) 334-6170

District IV

1220 S. St Francis Dr., Santa Fe, NM 87505
Phone:(505) 476-3470 Fax:(505) 476-3462

State of New Mexico
Energy, Minerals and Natural Resources
Oil Conservation Division
1220 S. St Francis Dr.
Santa Fe, NM 87505

CONDITIONS

Action 20597

CONDITIONS OF APPROVAL

Operator:	KAISER-FRANCIS OIL CO	P.O. Box 21468	Tulsa, OK74121	OGRID:	12361	Action Number:	20597	Action Type:	FORM 3160-3
-----------	-----------------------	----------------	----------------	--------	-------	----------------	-------	--------------	-------------

OCD Reviewer	Condition
pkautz	Will require a File As Drilled C-102 and a Directional Survey with the C-104
pkautz	Once the well is spud, to prevent ground water contamination through whole or partial conduits from the surface, the operator shall drill without interruption through the fresh water zone or zones and shall immediately set in cement the water protection string