

Form 3160-3  
(June 2015)FORM APPROVED  
OMB No. 1004-0137  
Expires: January 31, 2018

UNITED STATES  
DEPARTMENT OF THE INTERIOR  
BUREAU OF LAND MANAGEMENT  
**APPLICATION FOR PERMIT TO DRILL OR REENTER**

1a. Type of work: <input type="checkbox"/> DRILL <input type="checkbox"/> REENTER 1b. Type of Well: <input type="checkbox"/> Oil Well <input type="checkbox"/> Gas Well <input type="checkbox"/> Other 1c. Type of Completion: <input type="checkbox"/> Hydraulic Fracturing <input type="checkbox"/> Single Zone <input type="checkbox"/> Multiple Zone		5. Lease Serial No.  6. If Indian, Allottee or Tribe Name  7. If Unit or CA Agreement, Name and No.  8. Lease Name and Well No.
2. Name of Operator		9. API Well No. <div style="text-align: right; color: blue;">30 015 48243</div>
3a. Address	3b. Phone No. (include area code)	10. Field and Pool, or Exploratory
4. Location of Well (Report location clearly and in accordance with any State requirements. *) At surface At proposed prod. zone		11. Sec., T. R. M. or Blk. and Survey or Area
14. Distance in miles and direction from nearest town or post office*		12. County or Parish
13. State		
15. Distance from proposed* location to nearest property or lease line, ft. (Also to nearest drig. unit line, if any)	16. No of acres in lease	17. Spacing Unit dedicated to this well
18. Distance from proposed location* to nearest well, drilling, completed, applied for, on this lease, ft.	19. Proposed Depth	20. BLM/BIA Bond No. in file
21. Elevations (Show whether DF, KDB, RT, GL, etc.)	22. Approximate date work will start*	23. Estimated duration
24. Attachments		

The following, completed in accordance with the requirements of Onshore Oil and Gas Order No. 1, and the Hydraulic Fracturing rule per 43 CFR 3162.3-3 (as applicable)

- |   |   |
|---|---|
| 1. Well plat certified by a registered surveyor.<br>2. A Drilling Plan.<br>3. A Surface Use Plan (if the location is on National Forest System Lands, the SUPO must be filed with the appropriate Forest Service Office). | 4. Bond to cover the operations unless covered by an existing bond on file (see Item 20 above).<br>5. Operator certification.<br>6. Such other site specific information and/or plans as may be requested by the BLM. |
|---|---|

25. Signature	Name (Printed/Typed)	Date
Title		
Approved by (Signature)	Name (Printed/Typed)	Date
Title		
Office		

Application approval does not warrant or certify that the applicant holds legal or equitable title to those rights in the subject lease which would entitle the applicant to conduct operations thereon.  
 Conditions of approval, if any, are attached.

Title 18 U.S.C. Section 1001 and Title 43 U.S.C. Section 1212, make it a crime for any person knowingly and willfully to make to any department or agency of the United States any false, fictitious or fraudulent statements or representations as to any matter within its jurisdiction.



(Continued on page 2)

\*(Instructions on page 2)

District I  
1625 N. French Dr., Hobbs, NM 88240  
Phone: (575) 393-6161 Fax: (575) 393-0720  
District II  
811 S. First St., Artesia, NM 88210  
Phone: (575) 748-1283 Fax: (575) 748-9720  
District III  
1000 Rio Brazos Road, Aztec, NM 87410  
Phone: (505) 334-6178 Fax: (505) 334-6170  
District IV  
1220 S. St. Francis Dr., Santa Fe, NM 87505  
Phone: (505) 476-3460 Fax: (505) 476-3462

State of New Mexico  
Energy, Minerals & Natural Resources Department  
OIL CONSERVATION DIVISION  
1220 South St. Francis Dr.  
Santa Fe, NM 87505

Form C-102  
Revised August 1, 2011  
Submit one copy to appropriate  
District Office  
☐ AMENDED REPORT

## WELL LOCATION AND ACREAGE DEDICATION PLAT

<sup>1</sup> API Number <b>30-015-48243</b>	<sup>2</sup> Pool Code <b>15011</b>	<sup>3</sup> Pool Name <b>CULEBRA BLUFF; BONE SPRING, SOUTH</b>
<sup>4</sup> Property Code <b>325746</b>	<sup>5</sup> Property Name <b>RANA SALADA FED COM 0605</b>	
<sup>7</sup> OGRID No. <b>372920</b>	<sup>8</sup> Operator Name <b>NOVO OIL &amp; GAS NORTHERN DELAWARE, LLC</b>	<sup>6</sup> Well Number <b>124H</b>
		<sup>9</sup> Elevation <b>3038.3</b>

<sup>10</sup> Surface Location

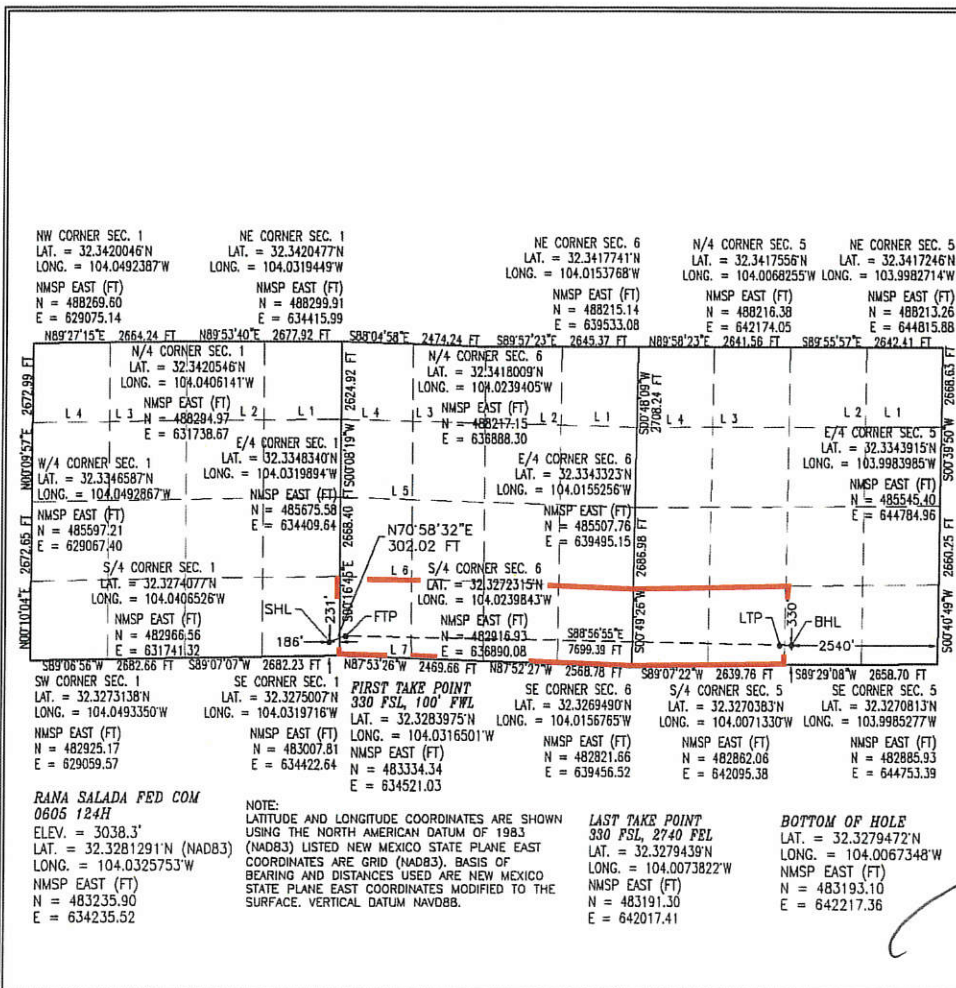
UL or lot no.	Section	Township	Range	Lot Idn	Feet from the	North/South line	Feet from the	East/West line	County
<b>P</b>	<b>1</b>	<b>23 S</b>	<b>28 E</b>		<b>231</b>	<b>SOUTH</b>	<b>186</b>	<b>EAST</b>	<b>EDDY</b>

<sup>11</sup> Bottom Hole Location If Different From Surface

UL or lot no.	Section	Township	Range	Lot Idn	Feet from the	North/South line	Feet from the	East/West line	County
<b>O</b>	<b>5</b>	<b>23 S</b>	<b>29 E</b>		<b>330</b>	<b>SOUTH</b>	<b>2540</b>	<b>EAST</b>	<b>EDDY</b>

<sup>12</sup> Dedicated Acres <b>236.82</b>	<sup>13</sup> Joint or Infill	<sup>14</sup> Consolidation Code <b>C</b>	<sup>15</sup> Order No.
--	-------------------------------	--	-------------------------

No allowable will be assigned to this completion until all interests have been consolidated or a non-standard unit has been approved by the division.

<sup>17</sup> OPERATOR CERTIFICATION

I hereby certify that the information contained herein is true and complete to the best of my knowledge and belief, and that this organization either owns a working interest or unleased mineral interest in the land including the proposed bottom hole location or has a right to drill this well at this location pursuant to a contract with an owner of such a mineral or working interest, or to a voluntary pooling agreement or a compulsory pooling order heretofore entered by the division.

*Brian Wood*  
Signature Date **8-10-19**

**BRIAN WOOD**

Printed Name **brian@permitswest.com**

E-mail Address **(505) 466-8120**

<sup>18</sup> SURVEYOR CERTIFICATION

I hereby certify that the well location shown on this plat was plotted from field notes of actual surveys made by me or under my supervision, and that the same is true and correct to the best of my belief.

MAY 15, 2019

Date of Survey

Signature and Seal of Professional Surveyor

Certificate Number **FILIMON B. JARAMILLO, PLS 12797**

SURVEY NO. 6152A

Intent **YES** As Drilled ☐

API #

Operator Name:	Property Name:	Well Number
<b>NOVO OIL &amp; GAS NORTHERN DELAWARE, LLC</b>	<b>RANA SALADA FED COM 0605</b>	<b>124H</b>

Kick Off Point (KOP)

UL <b>P</b>	Section <b>1</b>	Township <b>23S</b>	Range <b>28E</b>	Lot	Feet <b>231</b>	From N/S <b>SOUTH</b>	Feet <b>186</b>	From E/W <b>EAST</b>	County <b>EDDY</b>
Latitude <b>32.3281291</b>					Longitude <b>104.0325753</b>			NAD <b>83</b>	

First Take Point (FTP)

UL <b>6</b>	Section <b>6</b>	Township <b>23S</b>	Range <b>29E</b>	Lot <b>7</b>	Feet <b>330</b>	From N/S <b>SOUTH</b>	Feet <b>100</b>	From E/W <b>WEST</b>	County <b>EDDY</b>
Latitude <b>32.3283975</b>					Longitude <b>104.0316501</b>			NAD <b>83</b>	

Last Take Point (LTP)

UL <b>N</b>	Section <b>5</b>	Township <b>23S</b>	Range <b>29E</b>	Lot	Feet <b>330</b>	From N/S <b>SOUTH</b>	Feet <b>2740</b>	From E/W <b>EAST</b>	County <b>EDDY</b>
Latitude <b>32.3279439</b>					Longitude <b>104.0073822</b>			NAD <b>83</b>	

Is this well the defining well for the Horizontal Spacing Unit?

**NO**

Is this well an infill well?

**YES**

If infill is yes please provide API if available, Operator Name and well number for Defining well for Horizontal Spacing Unit.

API #

Operator Name:	Property Name:	Well Number
<b>NOVO OIL &amp; GAS NORTHERN DELAWARE, LLC</b>	<b>RANA SALADA FED COM 0605</b>	<b>123H</b>

KZ 06/29/2018



District I  
1625 N. French Dr., Hobbs, NM 88240  
District II  
811 S. First St., Artesia, NM 88210  
District III  
1000 Rio Brazos Road, Aztec, NM 87410  
District IV  
1220 S. St. Francis Dr., Santa Fe, NM 87505

State of New Mexico  
Energy, Minerals and Natural Resources Department  
Oil Conservation Division  
1220 South St. Francis Dr.  
Santa Fe, NM 87505

Submit Original  
to Appropriate  
District Office

### GAS CAPTURE PLAN

Date: 8/10/2019

X Original Operator & OGRID No.: Novo Oil & Gas Northern Delaware, LLC (372920)  
☐ Amended - Reason for Amendment: \_\_\_\_\_

This Gas Capture Plan outlines actions to be taken by the Operator to reduce well/production facility flaring/venting for new completion (new drill, recomple to new zone, re-frac) activity.

*Note: A C-129 must be submitted and approved prior to exceeding 60 days allowed by Rule 19.15.18.12.A*

#### Well(s)/Production Facility – Name of facility

The well(s) that will be located at the production facility are shown in the table below.

Well	API	SHL (ULSTR)	SHL Footages	Expected MCF/D	Flared or Vented	Comments
Rana Salada Fed Com 0605 124H	30-015-	P-1-23S-28E	231 FSL & 186 FEL	2500	30 days	Time depends on well clean up

#### Gathering System and Pipeline Notification

Well(s) will be connected to a production facility after flowback operations are complete, if gas transporter system is in place. Novo Oil & Gas Northern Delaware, LLC will provide (periodically) to its Gas Transporter a drilling, completion and estimated first production date for wells that are scheduled to be drilled in the foreseeable future. In addition, Novo Oil & Gas Northern Delaware, LLC and its Gas Transporter have periodic conference calls to discuss changes to drilling and completion schedules. Gas from these wells will be processed at an as yet undetermined Gas Transporter Processing Plant located in Eddy County, New Mexico. The actual flow of the gas will be based on compression operating parameters and gathering system pressures.

#### Flowback Strategy

After the fracture treatment/completion operations, well(s) will be produced to temporary production tanks and gas will be flared or vented. During flowback, the fluids and sand content will be monitored. When the produced fluids contain minimal sand, the wells will be turned to production facilities. Gas sales should start as soon as the wells start flowing through the production facilities, unless there are operational issues on its Gas Transporter system at that time. Based on current information, it is Novo Oil & Gas Northern Delaware, LLC's belief an existing or new system can take this gas upon completion of the well(s). Novo Oil & Gas Northern Delaware, LLC is planning to tie into Enterprise in SESE 6-23s-29e, though line has not yet been staked.

Safety requirements during cleanout operations from the use of underbalanced air cleanout systems may necessitate that sand and non-pipeline quality gas be vented and/or flared rather than sold on a temporary basis.

#### Alternatives to Reduce Flaring

Below are alternatives considered from a conceptual standpoint to reduce the amount of gas flared.

- Power Generation – On lease
  - Only a portion of gas is consumed operating the generator, remainder of gas will be flared
- Compressed Natural Gas – On lease
  - Gas flared would be minimal, but might be uneconomical to operate when gas volume declines
- NGL Removal – On lease

○ Plants are expensive, residue gas is still flared, and uneconomical to operate when gas volume declines



U.S. Department of the Interior  
BUREAU OF LAND MANAGEMENT

# Drilling Plan Data Report

04/22/2021

APD ID: 10400045784

Submission Date: 08/13/2019

Highlighted data  
reflects the most  
recent changes

Operator Name: NOVO OIL AND GAS NORTHERN DELAWARE LLC

Well Name: RANA SALADA FED COM 0605

Well Number: 124H

[Show Final Text](#)

Well Type: OIL WELL

Well Work Type: Drill

## Section 1 - Geologic Formations

Formation ID	Formation Name	Elevation	True Vertical Depth	Measured Depth	Lithologies	Mineral Resources	Producing Formation
513355	QUATERNARY	3055	0	0	OTHER : None	USEABLE WATER	N
513356	RUSTLER	2782	273	273	ANHYDRITE	NONE	N
513358	BELL CANYON	247	2808	2810	SANDSTONE	NATURAL GAS, OIL	N
513357	BASE OF SALT	247	2808	2810	SALT	NONE	N
513359	CHERRY CANYON	-753	3808	3811	SANDSTONE	NATURAL GAS, OIL	N
513360	BRUSHY CANYON	-2188	5243	5246	SANDSTONE	NATURAL GAS, OIL	N
513361	BONE SPRING	-3273	6328	6331	LIMESTONE	NATURAL GAS, OIL	N
513362	BONE SPRING 1ST	-4368	7423	7426	SANDSTONE	NATURAL GAS, OIL	N
513363	BONE SPRING 2ND	-4633	7688	7691	OTHER : Carbonate	NATURAL GAS, OIL	N
513364	BONE SPRING 2ND	-5053	8108	8113	SANDSTONE	NATURAL GAS, OIL	N
513365	BONE SPRING 3RD	-5473	8528	12100	OTHER : Carbonate	NATURAL GAS, OIL	Y

## Section 2 - Blowout Prevention

Pressure Rating (PSI): 5M

Rating Depth: 12000

**Equipment:** A 13.625 5,000-psi BOP system will be installed on a multi-bowl (speed head) wellhead with a 13.625 flanged casing spool. Top flange of casing spool will be set in a cellar below ground level. BOP system will consist of a single pipe ram on the bottom, mud cross, double pipe ram with blind rams on bottom and pipe rams on top, and annular preventer. Blowout preventer will be installed on top of the 13.375 surface casing and will remain installed to TD of the well.

**Requesting Variance?** YES

**Variance request:** Variance is requested to use a co-flex hose between the BOP system and choke manifold. A typical co-flex pressure test certificate is attached. An equipment specific co-flex pressure test certificate will be on site when testing the BOP.

**Testing Procedure:** BOP system will be isolated with a test plug and tested by an independent tester to 250-psi low and 5000-psi high for 10 minutes before drilling out the surface shoe. All casing strings will be tested in accordance with Onshore

**Operator Name:** NOVO OIL AND GAS NORTHERN DELAWARE LLC**Well Name:** RANA SALADA FED COM 0605**Well Number:** 124H

Order 2 III.B.1.h.

**Choke Diagram Attachment:**

RS\_0605\_124H\_Choke\_20191221094132.pdf

**BOP Diagram Attachment:**

RS\_0605\_124H\_BOP\_20190813035131.pdf

**Section 3 - Casing**

Casing ID	String Type	Hole Size	Csg Size	Condition	Standard	Tapered String	Top Set MD	Bottom Set MD	Top Set TVD	Bottom Set TVD	Top Set MSL	Bottom Set MSL	Calculated casing length MD	Grade	Weight	Joint Type	Collapse SF	Burst SF	Joint SF Type	Joint SF	Body SF Type	Body SF
1	SURFACE	17.5	13.375	NEW	API	N	0	348	0	348	3038	2690	348	J-55	54.5	BUTT	1.125	1.125	DRY	1.6	DRY	1.6
2	OTHER	12.25	9.625	NEW	API	N	0	2910	0	2908	3055	130	2910	J-55	40	BUTT	1.125	1.123	DRY	1.6	DRY	1.6
3	PRODUCTION	8.75	5.5	NEW	API	N	0	16227	0	8648	3055	-5610	16227	P-110	20	OTHER - TMK DQX	1.125	1.125	DRY	1.8	DRY	1.8

**Casing Attachments****Casing ID:** 1      **String Type:** SURFACE**Inspection Document:****Spec Document:****Tapered String Spec:****Casing Design Assumptions and Worksheet(s):**

RS\_0605\_124H\_Casing\_Design\_Assumptions\_20190813035206.pdf

**Operator Name:** NOVO OIL AND GAS NORTHERN DELAWARE LLC**Well Name:** RANA SALADA FED COM 0605**Well Number:** 124H**Casing Attachments****Casing ID:** 2      **String Type:** OTHER      - Salt Protection**Inspection Document:****Spec Document:****Tapered String Spec:****Casing Design Assumptions and Worksheet(s):**

RS\_0605\_124H\_Casing\_Design\_Assumptions\_20190813035230.pdf

**Casing ID:** 3      **String Type:** PRODUCTION**Inspection Document:****Spec Document:****Tapered String Spec:****Casing Design Assumptions and Worksheet(s):**

RS\_0605\_124H\_Casing\_Design\_Assumptions\_20190813035255.pdf

5.5in\_TMK\_Casing\_Spec\_20191221094053.pdf

**Section 4 - Cement**

String Type	Lead/Tail	Stage Tool Depth	Top MD	Bottom MD	Quantity(sx)	Yield	Density	Cu Ft	Excess%	Cement type	Additives
SURFACE	Lead		0	0	0	0	0	0	0	None	None
SURFACE	Tail		0	348	299	13.8	1.62	484	100	Class C	gel + accelerator + LCM
OTHER	Lead		0	2910	362	2.28	11.9	825	20	Class C	gel + extender + LCM
OTHER	Tail		0	2910	200	14.8	1.34	268	20	Class C	gel + retarder + LCM

**Operator Name:** NOVO OIL AND GAS NORTHERN DELAWARE LLC**Well Name:** RANA SALADA FED COM 0605**Well Number:** 124H

String Type	Lead/Tail	Stage Tool Depth	Top MD	Bottom MD	Quantity(sx)	Yield	Density	Cu Ft	Excess%	Cement type	Additives
PRODUCTION	Lead		0	1622 7	593	4.08	9.2	2419	20	Class H	fluid loss + retarder + LCM + extender & beads
PRODUCTION	Tail		0	1622 7	1761	13.2	1.42	2500	20	Class H	fluid loss + retarder + LCM

### Section 5 - Circulating Medium

**Mud System Type:** Closed**Will an air or gas system be Used?** NO**Description of the equipment for the circulating system in accordance with Onshore Order #2:****Diagram of the equipment for the circulating system in accordance with Onshore Order #2:**

**Describe what will be on location to control well or mitigate other conditions:** Necessary mud products (barite, bentonite, LCM) to control weight and fluid loss will be on site at all times. Mud program may change due to hole conditions.

**Describe the mud monitoring system utilized:** An electronic PVT mud system will monitor flow rate, pump pressure, stroke rate, and volume.

### Circulating Medium Table

Top Depth	Bottom Depth	Mud Type	Min Weight (lbs/gal)	Max Weight (lbs/gal)	Density (lbs/cu ft)	Gel Strength (lbs/100 sqft)	PH	Viscosity (CP)	Salinity (ppm)	Filtration (cc)	Additional Characteristics
0	348	OTHER : Fresh water spud	8.3	8.3							
348	2910	OTHER : Brine or cut brine	9.8	10.2							
2910	1622 7	OIL-BASED MUD	8.5	10							



**Operator Name:** NOVO OIL AND GAS NORTHERN DELAWARE LLC**Well Name:** RANA SALADA FED COM 0605**Well Number:** 124H

## Section 6 - Test, Logging, Coring

**List of production tests including testing procedures, equipment and safety measures:**

A 2-person mud logging program will be used from 3000 to TD.

GR log will be acquired by MWD tools from the intermediate casing to TD.

**List of open and cased hole logs run in the well:**

GAMMA RAY LOG, MUD LOG/GEOLOGICAL LITHOLOGY LOG,

**Coring operation description for the well:**

No core or drill stem test is planned.

## Section 7 - Pressure

**Anticipated Bottom Hole Pressure:** 4189**Anticipated Surface Pressure:** 4189**Anticipated Bottom Hole Temperature(F):** 150**Anticipated abnormal pressures, temperatures, or potential geologic hazards?** NO**Describe:****Contingency Plans geohazards description:****Contingency Plans geohazards attachment:****Hydrogen Sulfide drilling operations plan required?** YES**Hydrogen sulfide drilling operations plan:**

RS\_0605\_124H\_H2S\_Plan\_20190813074920.pdf

## Section 8 - Other Information

**Proposed horizontal/directional/multi-lateral plan submission:**

RS\_0605\_124H\_Horizontal\_Drill\_Plan\_20190813035628.pdf

**Other proposed operations facets description:****Other proposed operations facets attachment:**

RS\_0605\_124H\_Speedhead\_Specs\_20190813035713.pdf

RS\_0605\_124H\_Casing\_Specs\_20190813035740.pdf

RS\_0605\_124H\_Drill\_Plan\_Revised\_20191221093339.pdf

RS\_0605\_124H\_CoFlex\_Certs\_20191221093757.pdf

**Other Variance attachment:**

RS\_0605\_124H\_Casing\_Cement\_Variance\_20190813035751.docx

RS\_124H\_Alternative\_Casing\_Spec\_Request\_20191221094014.pdf



## Novo Oil &amp; Gas, LLC



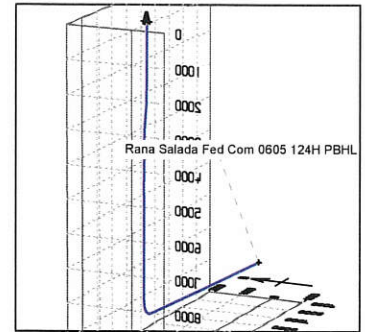
## PROJECT DETAILS: Eddy County, NM

Geodetic System: US State Plane 1983  
 Datum: North American Datum 1983  
 Ellipsoid: GRS 1980  
 Zone: New Mexico Eastern Zone  
 North Reference: Grid  
 System Datum: Mean Sea Level  
 To convert a True Direction to a Grid Direction, Subtract 0.16°  
 To convert a Magnetic Direction to a True Direction, Add 6.96° East  
 To convert a Magnetic Direction to a Grid Direction, Add 6.80°



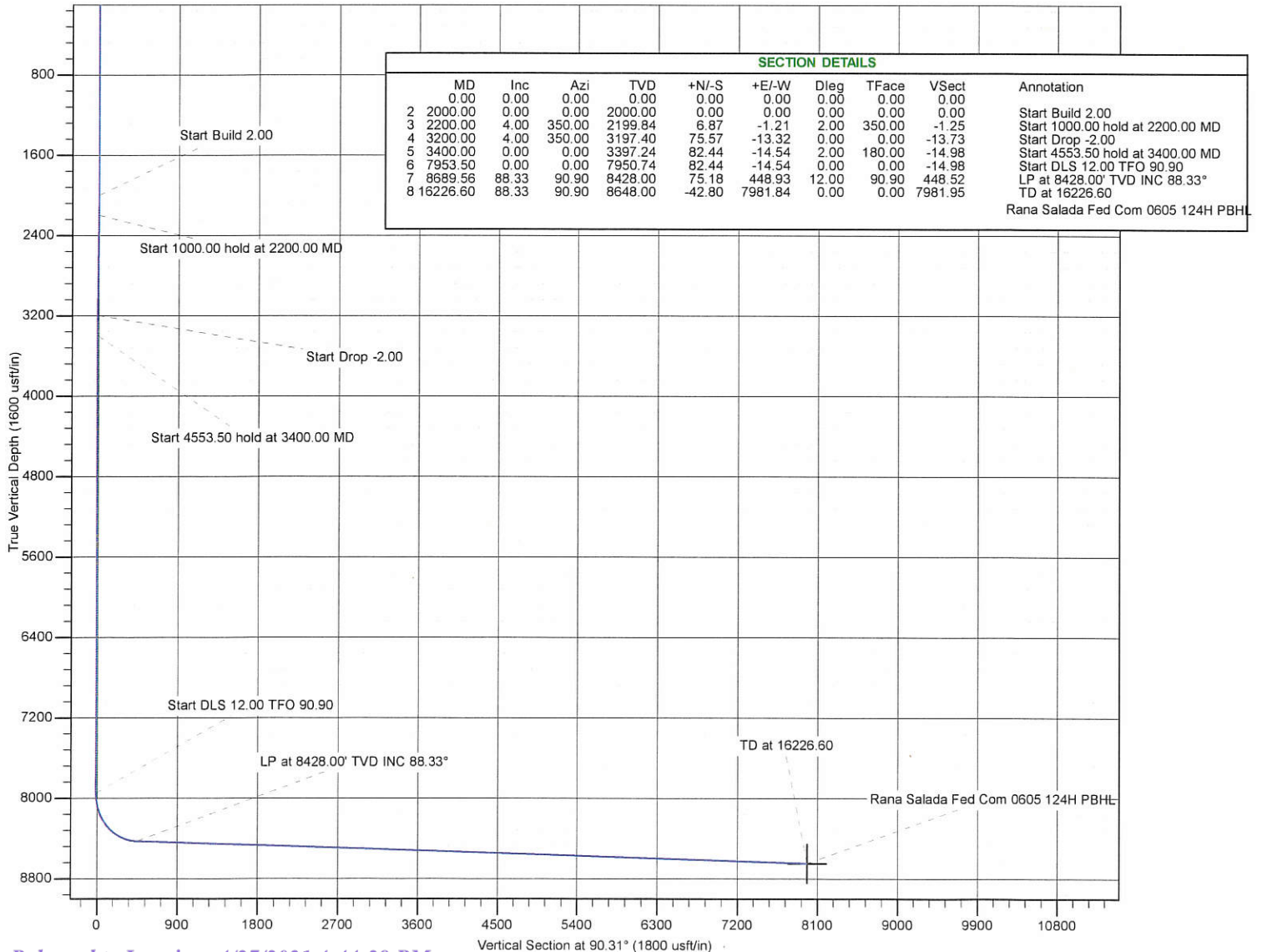
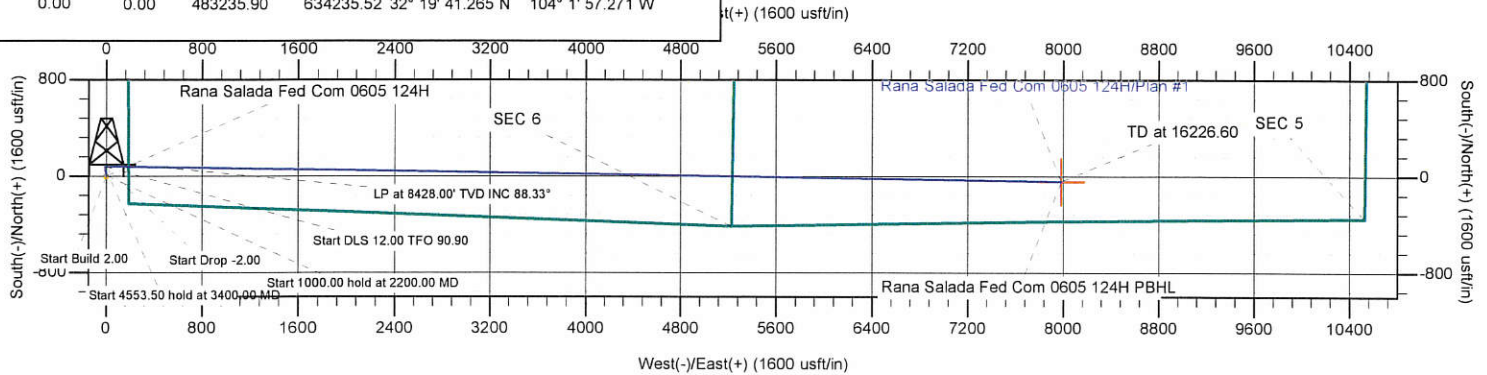
Azimuths to Grid North  
 True North: -0.16°  
 Magnetic North: 6.80°

Magnetic Field  
 Strength: 47746.5nT  
 Dip Angle: 60.06°  
 Date: 06/23/2019  
 Model: IGRF2015



## WELL DETAILS: Rana Salada Fed Com 0605 124H

GL 3038.3' + 25' KB @ 3063.30usft  
 Northing: 483235.90 Easting: 634235.52 32° 19' 41.265 N 104° 1' 57.271 W  
 +N/-S: 0.00 +E/-W: 0.00





## Hawkeye Directional Planning Report



<b>Database:</b>	HED_Compass_DSN	<b>Local Co-ordinate Reference:</b>	Well Rana Salada Fed Com 0605 124H
<b>Company:</b>	Novo Oil & Gas, LLC	<b>TVD Reference:</b>	GL 3038.3' + 25' KB @ 3063.30usft
<b>Project:</b>	Eddy County, NM	<b>MD Reference:</b>	GL 3038.3' + 25' KB @ 3063.30usft
<b>Site:</b>	SEC 1 - T23S - R28E	<b>North Reference:</b>	Grid
<b>Well:</b>	Rana Salada Fed Com 0605 124H	<b>Survey Calculation Method:</b>	Minimum Curvature
<b>Wellbore:</b>	OH		
<b>Design:</b>	Plan #1		

<b>Project</b>	Eddy County, NM		
<b>Map System:</b>	US State Plane 1983	<b>System Datum:</b>	Mean Sea Level
<b>Geo Datum:</b>	North American Datum 1983		
<b>Map Zone:</b>	New Mexico Eastern Zone		

Site	SEC 1 - T23S - R28E				
Site Position:		Northing:	485,859.91 usft	Latitude:	32° 20' 7.234 N
From:	Map	Easting:	634,120.16 usft	Longitude:	104° 1' 58.530 W
Position Uncertainty:	0.00 usft	Slot Radius:	13.200 in	Grid Convergence:	0.16 °

Well	Rana Salada Fed Com 0605 124H					
Well Position	+N/-S	-2,624.01 usft	Northing:	483,235.90 usft	Latitude:	32° 19' 41.265 N
	+E/-W	115.36 usft	Easting:	634,235.52 usft	Longitude:	104° 1' 57.271 W
Position Uncertainty		0.00 usft	Wellhead Elevation:		Ground Level:	3,038.30 usft

<b>Wellbore</b>	OH				
<b>Magnetics</b>	<b>Model Name</b>	<b>Sample Date</b>	<b>Declination (°)</b>	<b>Dip Angle (°)</b>	<b>Field Strength (nT)</b>
	IGRF2015	06/23/19	6.96	60.06	47,746.50563791

Design	Plan #1			
Audit Notes:				
Version:	Phase:	PLAN	Tie On Depth:	0.00
Vertical Section:	Depth From (TVD) (usft)	+N/-S (usft)	+E/-W (usft)	Direction (°)
	0.00	0.00	0.00	90.31

<b>Plan Survey Tool Program</b>	<b>Date</b>	06/23/19			
<b>Depth From (usft)</b>	<b>Depth To (usft)</b>	<b>Survey (Wellbore)</b>	<b>Tool Name</b>	<b>Remarks</b>	
1	0.00	16,226.60	Plan #1 (OH)	MWD	
				OWSG MWD - Standard	

<b>Plan Sections</b>										
<b>Measured Depth (usft)</b>	<b>Inclination (°)</b>	<b>Azimuth (°)</b>	<b>Vertical Depth (usft)</b>	<b>+N/-S (usft)</b>	<b>+E/-W (usft)</b>	<b>Dogleg Rate (°/100ft)</b>	<b>Build Rate (°/100ft)</b>	<b>Turn Rate (°/100ft)</b>	<b>TFO (°)</b>	<b>Target</b>
0.00	0.00	0.00	0.00	0.00	0.00	0.00	0.00	0.00	0.00	
2,000.00	0.00	0.00	2,000.00	0.00	0.00	0.00	0.00	0.00	0.00	
2,200.00	4.00	350.00	2,199.84	6.87	-1.21	2.00	2.00	0.00	350.00	
3,200.00	4.00	350.00	3,197.40	75.57	-13.32	0.00	0.00	0.00	0.00	
3,400.00	0.00	0.00	3,397.24	82.44	-14.54	2.00	-2.00	0.00	180.00	
7,953.50	0.00	0.00	7,950.74	82.44	-14.54	0.00	0.00	0.00	0.00	
8,689.56	88.33	90.90	8,428.00	75.18	448.93	12.00	12.00	12.35	90.90	
16,226.60	88.33	90.90	8,648.00	-42.80	7,981.84	0.00	0.00	0.00	0.00	Rana Salada Fed Cor



## Hawkeye Directional

## Planning Report



Database:	HED_Compass_DSN	Local Co-ordinate Reference:	Well Rana Salada Fed Com 0605 124H
Company:	Novo Oil & Gas, LLC	TVD Reference:	GL 3038.3' + 25' KB @ 3063.30usft
Project:	Eddy County, NM	MD Reference:	GL 3038.3' + 25' KB @ 3063.30usft
Site:	SEC 1 - T23S - R28E	North Reference:	Grid
Well:	Rana Salada Fed Com 0605 124H	Survey Calculation Method:	Minimum Curvature
Wellbore:	OH		
Design:	Plan #1		

## Planned Survey

Measured Depth (usft)	Inclination (°)	Azimuth (°)	Vertical Depth (usft)	+N/-S (usft)	+E/-W (usft)	Vertical Section (usft)	Dogleg Rate (°/100ft)	Build Rate (°/100ft)	Turn Rate (°/100ft)
0.00	0.00	0.00	0.00	0.00	0.00	0.00	0.00	0.00	0.00
100.00	0.00	0.00	100.00	0.00	0.00	0.00	0.00	0.00	0.00
200.00	0.00	0.00	200.00	0.00	0.00	0.00	0.00	0.00	0.00
300.00	0.00	0.00	300.00	0.00	0.00	0.00	0.00	0.00	0.00
400.00	0.00	0.00	400.00	0.00	0.00	0.00	0.00	0.00	0.00
500.00	0.00	0.00	500.00	0.00	0.00	0.00	0.00	0.00	0.00
600.00	0.00	0.00	600.00	0.00	0.00	0.00	0.00	0.00	0.00
700.00	0.00	0.00	700.00	0.00	0.00	0.00	0.00	0.00	0.00
800.00	0.00	0.00	800.00	0.00	0.00	0.00	0.00	0.00	0.00
900.00	0.00	0.00	900.00	0.00	0.00	0.00	0.00	0.00	0.00
1,000.00	0.00	0.00	1,000.00	0.00	0.00	0.00	0.00	0.00	0.00
1,100.00	0.00	0.00	1,100.00	0.00	0.00	0.00	0.00	0.00	0.00
1,200.00	0.00	0.00	1,200.00	0.00	0.00	0.00	0.00	0.00	0.00
1,300.00	0.00	0.00	1,300.00	0.00	0.00	0.00	0.00	0.00	0.00
1,400.00	0.00	0.00	1,400.00	0.00	0.00	0.00	0.00	0.00	0.00
1,500.00	0.00	0.00	1,500.00	0.00	0.00	0.00	0.00	0.00	0.00
1,600.00	0.00	0.00	1,600.00	0.00	0.00	0.00	0.00	0.00	0.00
1,700.00	0.00	0.00	1,700.00	0.00	0.00	0.00	0.00	0.00	0.00
1,800.00	0.00	0.00	1,800.00	0.00	0.00	0.00	0.00	0.00	0.00
1,900.00	0.00	0.00	1,900.00	0.00	0.00	0.00	0.00	0.00	0.00
2,000.00	0.00	0.00	2,000.00	0.00	0.00	0.00	0.00	0.00	0.00
<b>Start Build 2.00</b>									
2,100.00	2.00	350.00	2,099.98	1.72	-0.30	-0.31	2.00	2.00	0.00
2,200.00	4.00	350.00	2,199.84	6.87	-1.21	-1.25	2.00	2.00	0.00
<b>Start 1000.00 hold at 2200.00 MD</b>									
2,300.00	4.00	350.00	2,299.59	13.74	-2.42	-2.50	0.00	0.00	0.00
2,400.00	4.00	350.00	2,399.35	20.61	-3.63	-3.74	0.00	0.00	0.00
2,500.00	4.00	350.00	2,499.11	27.48	-4.85	-4.99	0.00	0.00	0.00
2,600.00	4.00	350.00	2,598.86	34.35	-6.06	-6.24	0.00	0.00	0.00
2,700.00	4.00	350.00	2,698.62	41.22	-7.27	-7.49	0.00	0.00	0.00
2,800.00	4.00	350.00	2,798.38	48.09	-8.48	-8.74	0.00	0.00	0.00
2,900.00	4.00	350.00	2,898.13	54.96	-9.69	-9.99	0.00	0.00	0.00
3,000.00	4.00	350.00	2,997.89	61.83	-10.90	-11.23	0.00	0.00	0.00
3,100.00	4.00	350.00	3,097.65	68.70	-12.11	-12.48	0.00	0.00	0.00
3,200.00	4.00	350.00	3,197.40	75.57	-13.32	-13.73	0.00	0.00	0.00
<b>Start Drop -2.00</b>									
3,300.00	2.00	350.00	3,297.26	80.72	-14.23	-14.67	2.00	-2.00	0.00
3,400.00	0.00	0.00	3,397.24	82.44	-14.54	-14.98	2.00	-2.00	0.00
<b>Start 4553.50 hold at 3400.00 MD</b>									
3,500.00	0.00	0.00	3,497.24	82.44	-14.54	-14.98	0.00	0.00	0.00
3,600.00	0.00	0.00	3,597.24	82.44	-14.54	-14.98	0.00	0.00	0.00
3,700.00	0.00	0.00	3,697.24	82.44	-14.54	-14.98	0.00	0.00	0.00
3,800.00	0.00	0.00	3,797.24	82.44	-14.54	-14.98	0.00	0.00	0.00
3,900.00	0.00	0.00	3,897.24	82.44	-14.54	-14.98	0.00	0.00	0.00
4,000.00	0.00	0.00	3,997.24	82.44	-14.54	-14.98	0.00	0.00	0.00
4,100.00	0.00	0.00	4,097.24	82.44	-14.54	-14.98	0.00	0.00	0.00
4,200.00	0.00	0.00	4,197.24	82.44	-14.54	-14.98	0.00	0.00	0.00
4,300.00	0.00	0.00	4,297.24	82.44	-14.54	-14.98	0.00	0.00	0.00
4,400.00	0.00	0.00	4,397.24	82.44	-14.54	-14.98	0.00	0.00	0.00
4,500.00	0.00	0.00	4,497.24	82.44	-14.54	-14.98	0.00	0.00	0.00
4,600.00	0.00	0.00	4,597.24	82.44	-14.54	-14.98	0.00	0.00	0.00
4,700.00	0.00	0.00	4,697.24	82.44	-14.54	-14.98	0.00	0.00	0.00
4,800.00	0.00	0.00	4,797.24	82.44	-14.54	-14.98	0.00	0.00	0.00



## Hawkeye Directional

## Planning Report



Database:	HED_Compass_DSN	Local Co-ordinate Reference:	Well Rana Salada Fed Com 0605 124H
Company:	Novo Oil & Gas, LLC	TVD Reference:	GL 3038.3' + 25' KB @ 3063.30usft
Project:	Eddy County, NM	MD Reference:	GL 3038.3' + 25' KB @ 3063.30usft
Site:	SEC 1 - T23S - R28E	North Reference:	Grid
Well:	Rana Salada Fed Com 0605 124H	Survey Calculation Method:	Minimum Curvature
Wellbore:	OH		
Design:	Plan #1		

## Planned Survey

Measured Depth (usft)	Inclination (°)	Azimuth (°)	Vertical Depth (usft)	+N/-S (usft)	+E/-W (usft)	Vertical Section (usft)	Dogleg Rate (°/100ft)	Build Rate (°/100ft)	Turn Rate (°/100ft)
4,900.00	0.00	0.00	4,897.24	82.44	-14.54	-14.98	0.00	0.00	0.00
5,000.00	0.00	0.00	4,997.24	82.44	-14.54	-14.98	0.00	0.00	0.00
5,100.00	0.00	0.00	5,097.24	82.44	-14.54	-14.98	0.00	0.00	0.00
5,200.00	0.00	0.00	5,197.24	82.44	-14.54	-14.98	0.00	0.00	0.00
5,300.00	0.00	0.00	5,297.24	82.44	-14.54	-14.98	0.00	0.00	0.00
5,400.00	0.00	0.00	5,397.24	82.44	-14.54	-14.98	0.00	0.00	0.00
5,500.00	0.00	0.00	5,497.24	82.44	-14.54	-14.98	0.00	0.00	0.00
5,600.00	0.00	0.00	5,597.24	82.44	-14.54	-14.98	0.00	0.00	0.00
5,700.00	0.00	0.00	5,697.24	82.44	-14.54	-14.98	0.00	0.00	0.00
5,800.00	0.00	0.00	5,797.24	82.44	-14.54	-14.98	0.00	0.00	0.00
5,900.00	0.00	0.00	5,897.24	82.44	-14.54	-14.98	0.00	0.00	0.00
6,000.00	0.00	0.00	5,997.24	82.44	-14.54	-14.98	0.00	0.00	0.00
6,100.00	0.00	0.00	6,097.24	82.44	-14.54	-14.98	0.00	0.00	0.00
6,200.00	0.00	0.00	6,197.24	82.44	-14.54	-14.98	0.00	0.00	0.00
6,300.00	0.00	0.00	6,297.24	82.44	-14.54	-14.98	0.00	0.00	0.00
6,400.00	0.00	0.00	6,397.24	82.44	-14.54	-14.98	0.00	0.00	0.00
6,500.00	0.00	0.00	6,497.24	82.44	-14.54	-14.98	0.00	0.00	0.00
6,600.00	0.00	0.00	6,597.24	82.44	-14.54	-14.98	0.00	0.00	0.00
6,700.00	0.00	0.00	6,697.24	82.44	-14.54	-14.98	0.00	0.00	0.00
6,800.00	0.00	0.00	6,797.24	82.44	-14.54	-14.98	0.00	0.00	0.00
6,900.00	0.00	0.00	6,897.24	82.44	-14.54	-14.98	0.00	0.00	0.00
7,000.00	0.00	0.00	6,997.24	82.44	-14.54	-14.98	0.00	0.00	0.00
7,100.00	0.00	0.00	7,097.24	82.44	-14.54	-14.98	0.00	0.00	0.00
7,200.00	0.00	0.00	7,197.24	82.44	-14.54	-14.98	0.00	0.00	0.00
7,300.00	0.00	0.00	7,297.24	82.44	-14.54	-14.98	0.00	0.00	0.00
7,400.00	0.00	0.00	7,397.24	82.44	-14.54	-14.98	0.00	0.00	0.00
7,500.00	0.00	0.00	7,497.24	82.44	-14.54	-14.98	0.00	0.00	0.00
7,600.00	0.00	0.00	7,597.24	82.44	-14.54	-14.98	0.00	0.00	0.00
7,700.00	0.00	0.00	7,697.24	82.44	-14.54	-14.98	0.00	0.00	0.00
7,800.00	0.00	0.00	7,797.24	82.44	-14.54	-14.98	0.00	0.00	0.00
7,900.00	0.00	0.00	7,897.24	82.44	-14.54	-14.98	0.00	0.00	0.00
7,953.50	0.00	0.00	7,950.74	82.44	-14.54	-14.98	0.00	0.00	0.00
Start DLS 12.00 TFO 90.90									
7,975.00	2.58	90.90	7,972.23	82.43	-14.05	-14.49	12.00	12.00	0.00
8,000.00	5.58	90.90	7,997.17	82.41	-12.27	-12.72	12.00	12.00	0.00
8,025.00	8.58	90.90	8,021.97	82.36	-9.19	-9.64	12.00	12.00	0.00
8,050.00	11.58	90.90	8,046.58	82.29	-4.82	-5.26	12.00	12.00	0.00
8,075.00	14.58	90.90	8,070.93	82.20	0.84	0.40	12.00	12.00	0.00
8,100.00	17.58	90.90	8,094.95	82.09	7.76	7.32	12.00	12.00	0.00
8,125.00	20.58	90.90	8,118.58	81.96	15.93	15.49	12.00	12.00	0.00
8,150.00	23.58	90.90	8,141.74	81.82	25.33	24.89	12.00	12.00	0.00
8,175.00	26.58	90.90	8,164.38	81.65	35.92	35.48	12.00	12.00	0.00
8,200.00	29.58	90.90	8,186.43	81.47	47.69	47.25	12.00	12.00	0.00
8,225.00	32.58	90.90	8,207.84	81.26	60.59	60.15	12.00	12.00	0.00
8,250.00	35.58	90.90	8,228.55	81.05	74.59	74.16	12.00	12.00	0.00
8,275.00	38.58	90.90	8,248.49	80.81	89.66	89.23	12.00	12.00	0.00
8,300.00	41.58	90.90	8,267.62	80.56	105.76	105.32	12.00	12.00	0.00
8,325.00	44.58	90.90	8,285.87	80.29	122.83	122.40	12.00	12.00	0.00
8,350.00	47.58	90.90	8,303.21	80.01	140.83	140.40	12.00	12.00	0.00
8,375.00	50.58	90.90	8,319.59	79.71	159.72	159.29	12.00	12.00	0.00
8,400.00	53.58	90.90	8,334.95	79.40	179.43	179.01	12.00	12.00	0.00
8,425.00	56.58	90.90	8,349.26	79.08	199.93	199.50	12.00	12.00	0.00
8,450.00	59.58	90.90	8,362.47	78.75	221.14	220.72	12.00	12.00	0.00



## Hawkeye Directional

## Planning Report



Database:	HED_Compass_DSN	Local Co-ordinate Reference:	Well Rana Salada Fed Com 0605 124H
Company:	Novo Oil & Gas, LLC	TVD Reference:	GL 3038.3' + 25' KB @ 3063.30usft
Project:	Eddy County, NM	MD Reference:	GL 3038.3' + 25' KB @ 3063.30usft
Site:	SEC 1 - T23S - R28E	North Reference:	Grid
Well:	Rana Salada Fed Com 0605 124H	Survey Calculation Method:	Minimum Curvature
Wellbore:	OH		
Design:	Plan #1		

## Planned Survey

Measured Depth (usft)	Inclination (°)	Azimuth (°)	Vertical Depth (usft)	+N/-S (usft)	+E/-W (usft)	Vertical Section (usft)	Dogleg Rate (°/100ft)	Build Rate (°/100ft)	Turn Rate (°/100ft)
8,475.00	62.58	90.90	8,374.56	78.41	243.02	242.60	12.00	12.00	0.00
8,500.00	65.58	90.90	8,385.49	78.06	265.50	265.08	12.00	12.00	0.00
8,525.00	68.58	90.90	8,395.22	77.70	288.52	288.10	12.00	12.00	0.00
8,550.00	71.58	90.90	8,403.74	77.33	312.02	311.60	12.00	12.00	0.00
8,575.00	74.58	90.90	8,411.02	76.95	335.93	335.51	12.00	12.00	0.00
8,600.00	77.58	90.90	8,417.03	76.57	360.19	359.78	12.00	12.00	0.00
8,625.00	80.58	90.90	8,421.76	76.19	384.73	384.32	12.00	12.00	0.00
8,650.00	83.58	90.90	8,425.21	75.80	409.49	409.08	12.00	12.00	0.00
8,675.00	86.58	90.90	8,427.35	75.41	434.39	433.98	12.00	12.00	0.00
8,689.56	88.33	90.90	8,428.00	75.18	448.93	448.52	12.00	12.00	0.00
LP at 8428.00' TVD INC 88.33°									
8,700.00	88.33	90.90	8,428.30	75.02	459.37	458.96	0.00	0.00	0.00
8,800.00	88.33	90.90	8,431.22	73.45	559.31	558.91	0.00	0.00	0.00
8,900.00	88.33	90.90	8,434.14	71.89	659.26	658.86	0.00	0.00	0.00
9,000.00	88.33	90.90	8,437.06	70.32	759.20	758.82	0.00	0.00	0.00
9,100.00	88.33	90.90	8,439.98	68.76	859.15	858.77	0.00	0.00	0.00
9,200.00	88.33	90.90	8,442.90	67.19	959.09	958.72	0.00	0.00	0.00
9,300.00	88.33	90.90	8,445.82	65.63	1,059.04	1,058.67	0.00	0.00	0.00
9,400.00	88.33	90.90	8,448.74	64.06	1,158.98	1,158.62	0.00	0.00	0.00
9,500.00	88.33	90.90	8,451.66	62.50	1,258.93	1,258.58	0.00	0.00	0.00
9,600.00	88.33	90.90	8,454.57	60.93	1,358.88	1,358.53	0.00	0.00	0.00
9,700.00	88.33	90.90	8,457.49	59.37	1,458.82	1,458.48	0.00	0.00	0.00
9,800.00	88.33	90.90	8,460.41	57.80	1,558.77	1,558.43	0.00	0.00	0.00
9,900.00	88.33	90.90	8,463.33	56.23	1,658.71	1,658.39	0.00	0.00	0.00
10,000.00	88.33	90.90	8,466.25	54.67	1,758.66	1,758.34	0.00	0.00	0.00
10,100.00	88.33	90.90	8,469.17	53.10	1,858.60	1,858.29	0.00	0.00	0.00
10,200.00	88.33	90.90	8,472.09	51.54	1,958.55	1,958.24	0.00	0.00	0.00
10,300.00	88.33	90.90	8,475.01	49.97	2,058.49	2,058.19	0.00	0.00	0.00
10,400.00	88.33	90.90	8,477.93	48.41	2,158.44	2,158.15	0.00	0.00	0.00
10,500.00	88.33	90.90	8,480.84	46.84	2,258.38	2,258.10	0.00	0.00	0.00
10,600.00	88.33	90.90	8,483.76	45.28	2,358.33	2,358.05	0.00	0.00	0.00
10,700.00	88.33	90.90	8,486.68	43.71	2,458.27	2,458.00	0.00	0.00	0.00
10,800.00	88.33	90.90	8,489.60	42.15	2,558.22	2,557.95	0.00	0.00	0.00
10,900.00	88.33	90.90	8,492.52	40.58	2,658.16	2,657.91	0.00	0.00	0.00
11,000.00	88.33	90.90	8,495.44	39.02	2,758.11	2,757.86	0.00	0.00	0.00
11,100.00	88.33	90.90	8,498.36	37.45	2,858.05	2,857.81	0.00	0.00	0.00
11,200.00	88.33	90.90	8,501.28	35.88	2,958.00	2,957.76	0.00	0.00	0.00
11,300.00	88.33	90.90	8,504.20	34.32	3,057.94	3,057.71	0.00	0.00	0.00
11,400.00	88.33	90.90	8,507.11	32.75	3,157.89	3,157.67	0.00	0.00	0.00
11,500.00	88.33	90.90	8,510.03	31.19	3,257.83	3,257.62	0.00	0.00	0.00
11,600.00	88.33	90.90	8,512.95	29.62	3,357.78	3,357.57	0.00	0.00	0.00
11,700.00	88.33	90.90	8,515.87	28.06	3,457.72	3,457.52	0.00	0.00	0.00
11,800.00	88.33	90.90	8,518.79	26.49	3,557.67	3,557.47	0.00	0.00	0.00
11,900.00	88.33	90.90	8,521.71	24.93	3,657.61	3,657.43	0.00	0.00	0.00
12,000.00	88.33	90.90	8,524.63	23.36	3,757.56	3,757.38	0.00	0.00	0.00
12,100.00	88.33	90.90	8,527.55	21.80	3,857.50	3,857.33	0.00	0.00	0.00
12,200.00	88.33	90.90	8,530.47	20.23	3,957.45	3,957.28	0.00	0.00	0.00
12,300.00	88.33	90.90	8,533.39	18.67	4,057.39	4,057.24	0.00	0.00	0.00
12,400.00	88.33	90.90	8,536.30	17.10	4,157.34	4,157.19	0.00	0.00	0.00
12,500.00	88.33	90.90	8,539.22	15.54	4,257.28	4,257.14	0.00	0.00	0.00
12,600.00	88.33	90.90	8,542.14	13.97	4,357.23	4,357.09	0.00	0.00	0.00
12,700.00	88.33	90.90	8,545.06	12.40	4,457.17	4,457.04	0.00	0.00	0.00
12,800.00	88.33	90.90	8,547.98	10.84	4,557.12	4,557.00	0.00	0.00	0.00
12,900.00	88.33	90.90	8,550.90	9.27	4,657.06	4,656.95	0.00	0.00	0.00



# Hawkeye Directional Planning Report



<b>Database:</b>	HED_Compass_DSN	<b>Local Co-ordinate Reference:</b>	Well Rana Salada Fed Com 0605 124H
<b>Company:</b>	Novo Oil & Gas, LLC	<b>TVD Reference:</b>	GL 3038.3' + 25' KB @ 3063.30usft
<b>Project:</b>	Eddy County, NM	<b>MD Reference:</b>	GL 3038.3' + 25' KB @ 3063.30usft
<b>Site:</b>	SEC 1 - T23S - R28E	<b>North Reference:</b>	Grid
<b>Well:</b>	Rana Salada Fed Com 0605 124H	<b>Survey Calculation Method:</b>	Minimum Curvature
<b>Wellbore:</b>	OH		
<b>Design:</b>	Plan #1		

## Planned Survey

Measured Depth (usft)	Inclination (°)	Azimuth (°)	Vertical Depth (usft)	+N/-S (usft)	+E/-W (usft)	Vertical Section (usft)	Dogleg Rate (°/100ft)	Build Rate (°/100ft)	Turn Rate (°/100ft)
13,000.00	88.33	90.90	8,553.82	7.71	4,757.01	4,756.90	0.00	0.00	0.00
13,100.00	88.33	90.90	8,556.74	6.14	4,856.95	4,856.85	0.00	0.00	0.00
13,200.00	88.33	90.90	8,559.66	4.58	4,956.90	4,956.80	0.00	0.00	0.00
13,300.00	88.33	90.90	8,562.57	3.01	5,056.85	5,056.76	0.00	0.00	0.00
13,400.00	88.33	90.90	8,565.49	1.45	5,156.79	5,156.71	0.00	0.00	0.00
13,500.00	88.33	90.90	8,568.41	-0.12	5,256.74	5,256.66	0.00	0.00	0.00
13,600.00	88.33	90.90	8,571.33	-1.68	5,356.68	5,356.61	0.00	0.00	0.00
13,700.00	88.33	90.90	8,574.25	-3.25	5,456.63	5,456.56	0.00	0.00	0.00
13,800.00	88.33	90.90	8,577.17	-4.81	5,556.57	5,556.52	0.00	0.00	0.00
13,900.00	88.33	90.90	8,580.09	-6.38	5,656.52	5,656.47	0.00	0.00	0.00
14,000.00	88.33	90.90	8,583.01	-7.95	5,756.46	5,756.42	0.00	0.00	0.00
14,100.00	88.33	90.90	8,585.93	-9.51	5,856.41	5,856.37	0.00	0.00	0.00
14,200.00	88.33	90.90	8,588.85	-11.08	5,956.35	5,956.33	0.00	0.00	0.00
14,300.00	88.33	90.90	8,591.76	-12.64	6,056.30	6,056.28	0.00	0.00	0.00
14,400.00	88.33	90.90	8,594.68	-14.21	6,156.24	6,156.23	0.00	0.00	0.00
14,500.00	88.33	90.90	8,597.60	-15.77	6,256.19	6,256.18	0.00	0.00	0.00
14,600.00	88.33	90.90	8,600.52	-17.34	6,356.13	6,356.13	0.00	0.00	0.00
14,700.00	88.33	90.90	8,603.44	-18.90	6,456.08	6,456.09	0.00	0.00	0.00
14,800.00	88.33	90.90	8,606.36	-20.47	6,556.02	6,556.04	0.00	0.00	0.00
14,900.00	88.33	90.90	8,609.28	-22.03	6,655.97	6,655.99	0.00	0.00	0.00
15,000.00	88.33	90.90	8,612.20	-23.60	6,755.91	6,755.94	0.00	0.00	0.00
15,100.00	88.33	90.90	8,615.12	-25.16	6,855.86	6,855.89	0.00	0.00	0.00
15,200.00	88.33	90.90	8,618.03	-26.73	6,955.80	6,955.85	0.00	0.00	0.00
15,300.00	88.33	90.90	8,620.95	-28.30	7,055.75	7,055.80	0.00	0.00	0.00
15,400.00	88.33	90.90	8,623.87	-29.86	7,155.69	7,155.75	0.00	0.00	0.00
15,500.00	88.33	90.90	8,626.79	-31.43	7,255.64	7,255.70	0.00	0.00	0.00
15,600.00	88.33	90.90	8,629.71	-32.99	7,355.58	7,355.65	0.00	0.00	0.00
15,700.00	88.33	90.90	8,632.63	-34.56	7,455.53	7,455.61	0.00	0.00	0.00
15,800.00	88.33	90.90	8,635.55	-36.12	7,555.47	7,555.56	0.00	0.00	0.00
15,900.00	88.33	90.90	8,638.47	-37.69	7,655.42	7,655.51	0.00	0.00	0.00
16,000.00	88.33	90.90	8,641.39	-39.25	7,755.36	7,755.46	0.00	0.00	0.00
16,100.00	88.33	90.90	8,644.30	-40.82	7,855.31	7,855.41	0.00	0.00	0.00
16,200.00	88.33	90.90	8,647.22	-42.38	7,955.25	7,955.37	0.00	0.00	0.00
16,226.60	88.33	90.90	8,648.00	-42.80	7,981.84	7,981.95	0.00	0.00	0.00
TD at 16226.60									

## Design Targets

Target Name	Dip Angle (°)	Dip Dir. (°)	TVD (usft)	+N/-S (usft)	+E/-W (usft)	Northing (usft)	Easting (usft)	Latitude	Longitude
- hit/miss target									
- Shape									
Rana Salada Fed Com C	0.00	0.00	8,648.00	-42.80	7,981.84	483,193.10	642,217.36	32° 19' 40.610 N	104° 0' 24.245 W
- plan hits target center									
- Point									



# Hawkeye Directional

## Planning Report



<b>Database:</b>	HED_Compass_DSN	<b>Local Co-ordinate Reference:</b>	Well Rana Salada Fed Com 0605 124H
<b>Company:</b>	Novo Oil & Gas, LLC	<b>TVD Reference:</b>	GL 3038.3' + 25' KB @ 3063.30usft
<b>Project:</b>	Eddy County, NM	<b>MD Reference:</b>	GL 3038.3' + 25' KB @ 3063.30usft
<b>Site:</b>	SEC 1 - T23S - R28E	<b>North Reference:</b>	Grid
<b>Well:</b>	Rana Salada Fed Com 0605 124H	<b>Survey Calculation Method:</b>	Minimum Curvature
<b>Wellbore:</b>	OH		
<b>Design:</b>	Plan #1		

### Plan Annotations

Measured Depth (usft)	Vertical Depth (usft)	Local Coordinates		Comment
		+N/-S (usft)	+E/-W (usft)	
2,000.00	2,000.00	0.00	0.00	Start Build 2.00
2,200.00	2,199.84	6.87	-1.21	Start 1000.00 hold at 2200.00 MD
3,200.00	3,197.40	75.57	-13.32	Start Drop -2.00
3,400.00	3,397.24	82.44	-14.54	Start 4553.50 hold at 3400.00 MD
7,953.50	7,950.74	82.44	-14.54	Start DLS 12.00 TFO 90.90
8,689.56	8,428.00	75.18	448.93	LP at 8428.00' TVD INC 88.33°
16,226.60	8,648.00	-42.80	7,981.84	TD at 16226.60

**PECOS DISTRICT  
SURFACE USE  
CONDITIONS OF APPROVAL**

OPERATOR'S NAME: Novo Oil & Gas Delaware, LLC  
LEASE NO.: NMNM 061349  
LOCATION: Section 1, T. 23 S., R. 28 E., NMPM  
COUNTY: Eddy County, New Mexico

**RANA SALADA FED COM 0605 124H**

**Surface Hole Location: 231' FSL & 186' FEL, Section 1, T. 23 S., R. 28 E.**

**Bottom Hole Location: 10' FSL & 1914' FWL, Section 5, T. 23 S., R. 29 E**

## TABLE OF CONTENTS

Standard Conditions of Approval (COA) apply to this APD. If any deviations to these standards exist or special COAs are required, the section with the deviation or requirement will be checked below.

- ☐ **General Provisions**
- ☐ **Permit Expiration**
- ☐ **Archaeology, Paleontology, and Historical Sites**
- ☐ **Noxious Weeds**
- ☒ **Special Requirements**
  - Cave/Karst
  - Hydrology
  - Potash Resources
- ☐ **Construction**
  - Notification
  - Topsoil
  - Closed Loop System
  - Federal Mineral Material Pits
  - Well Pads
  - Roads
- ☐ **Road Section Diagram**
- ☐ **Production (Post Drilling)**
  - Well Structures & Facilities
- ☐ **Interim Reclamation**
- ☐ **Final Abandonment & Reclamation**

## GENERAL PROVISIONS

The approval of the Application For Permit To Drill (APD) is in compliance with all applicable laws and regulations: 43 Code of Federal Regulations 3160, the lease terms, Onshore Oil and Gas Orders, Notices To Lessees, New Mexico Oil Conservation Division (NMOCD) Rules, National Historical Preservation Act As Amended, and instructions and orders of the Authorized Officer. Any request for a variance shall be submitted to the Authorized Officer on Form 3160-5, Sundry Notices and Report on Wells.

### I. PERMIT EXPIRATION

If the permit terminates prior to drilling and drilling cannot be commenced within 60 days after expiration, an operator is required to submit Form 3160-5, Sundry Notices and Reports on Wells, requesting surface reclamation requirements for any surface disturbance. However, if the operator will be able to initiate drilling within 60 days after the expiration of the permit, the operator must have set the conductor pipe in order to allow for an extension of 60 days beyond the

expiration date of the APD. (Filing of a Sundry Notice is required for this 60 day extension.)

## **II. ARCHAEOLOGICAL, PALEONTOLOGY & HISTORICAL SITES**

Any cultural and/or paleontological resource discovered by the operator or by any person working on the operator's behalf shall immediately report such findings to the Authorized Officer. The operator is fully accountable for the actions of their contractors and subcontractors. The operator shall suspend all operations in the immediate area of such discovery until written authorization to proceed is issued by the Authorized Officer. An evaluation of the discovery shall be made by the Authorized Officer to determine the appropriate actions that shall be required to prevent the loss of significant cultural or scientific values of the discovery. The operator shall be held responsible for the cost of the proper mitigation measures that the Authorized Officer assesses after consultation with the operator on the evaluation and decisions of the discovery. Any unauthorized collection or disturbance of cultural or paleontological resources may result in a shutdown order by the Authorized Officer.

## **III. NOXIOUS WEEDS**

The operator shall be held responsible if noxious weeds become established within the areas of operations. Weed control shall be required on the disturbed land where noxious weeds exist, which includes the roads, pads, associated pipeline corridor, and adjacent land affected by the establishment of weeds due to this action. The operator shall consult with the Authorized Officer for acceptable weed control methods, which include following EPA and BLM requirements and policies.

## **IV. SPECIAL REQUIREMENT(S)**

### **Hydrology:**

The entire well pad(s) will be bermed to prevent oil, salt, and other chemical contaminants from leaving the well pad. The compacted berm shall be constructed at a minimum of 12 inches with impermeable mineral material (e.g. caliche). Topsoil shall not be used to construct the berm. No water flow from the uphill side(s) of the pad shall be allowed to enter the well pad. The integrity of the berm shall be maintained around the surfaced pad throughout the life of the well and around the downsized pad after interim reclamation has been completed. Any water erosion that may occur due to the construction of the well pad during the life of the well will be quickly corrected and proper measures will be taken to prevent future erosion. Stockpiling of topsoil is required. The top soil shall be stockpiled in an appropriate location to prevent loss of soil due to water or wind erosion and not used for berming or erosion control. If fluid collects within



the bermed area, the fluid must be vacuumed into a safe container and disposed of properly at a state approved facility.

Tank battery locations will be lined and bermed. A 20 mil permanent liner will be installed with a 4 oz. felt backing to prevent tears or punctures. Tank battery berms must be large enough to contain 1 ½ times the content of the largest tank or 24 hour production, whichever is greater. Automatic shut off, check valves, or similar systems will be installed for tanks to minimize the effects of catastrophic line failures used in production or drilling.

Any water erosion that may occur due to the construction of overhead electric line and during the life of the power line will be quickly corrected and proper measures will be taken to prevent future erosion. A power pole should not be placed in drainages, playas, or floodplains and must span across the features at a distance away that would not promote further erosion.

### **Cave/Karst:**

### **Construction:**

#### **General Construction:**

- No blasting
- The BLM, Carlsbad Field Office, will be informed immediately if any subsurface drainage channels, cave passages, or voids are penetrated during construction, and no additional construction shall occur until clearance has been issued by the Authorized Officer.
- All linear surface disturbance activities will avoid sinkholes and other karst features to lessen the possibility of encountering near surface voids during construction, minimize changes to runoff, and prevent untimely leaks and spills from entering the karst drainage system.
- All spills or leaks will be reported to the BLM immediately for their immediate and proper treatment.

#### **Pad Construction:**

- The pad will be constructed and leveled by adding the necessary fill and caliche – no blasting.
- The entire perimeter of the well pad will be bermed to prevent oil, salt, and other chemical contaminants from leaving the well pad.
- The compacted berm shall be constructed at a minimum of 12 inches high with impermeable mineral material (e.g., caliche).
- No water flow from the uphill side(s) of the pad shall be allowed to enter the well pad.
- The topsoil stockpile shall be located outside the bermed well pad.
- Topsoil, either from the well pad or surrounding area, shall not be used to construct the berm.

- No storm drains, tubing or openings shall be placed in the berm.
- If fluid collects within the bermed area, the fluid must be vacuumed into a safe container and disposed of properly at a state approved facility.
- The integrity of the berm shall be maintained around the surfaced pad throughout the life of the well and around the downsized pad after interim reclamation has been completed.
- Any access road entering the well pad shall be constructed so that the integrity of the berm height surrounding the well pad is not compromised (i.e. an access road crossing the berm cannot be lower than the berm height).
- Following a rain event, all fluids will vacuumed off of the pad and hauled off-site and disposed at a proper disposal facility.

**Tank Battery Construction:**

- The pad will be constructed and leveled by adding the necessary fill and caliche – no blasting.
- All tank battery locations and facilities will be lined and bermed.
- The liner should be at least 20 mil in thickness and installed with a 4 oz. felt backing, or equivalent, to prevent tears or punctures.
- Tank battery berms must be large enough to contain 1 ½ times the content of the largest tank.

**Road Construction:**

- Turnout ditches and drainage leadoffs will not be constructed in such a manner as to alter the natural flow of water into or out of cave or karst features.
- Special restoration stipulations or realignment may be required if subsurface features are discovered during construction.

**Leak Detection System:**

- A method of detecting leaks is required. The method could incorporate gauges to measure loss, siting valves and lines so they can be visually inspected, or installing electronic sensors to alarm when a leak is present.
- A leak detection plan will be submitted to BLM that incorporates an automatic shut off system (see below) to minimize the effects of an undesirable event that could negatively sensitive cave/karst resources.
- Well heads, pipelines (surface and buried), storage tanks, and all supporting equipment should be monitored regularly after installation to promptly identify and fix leaks.

**Automatic Shut-off Systems:**

- Automatic shut off, check valves, or similar systems will be installed for pipelines and tanks to minimize the effects of catastrophic line failures used in production or drilling.

## **Cave/Karst Subsurface Mitigation**

The following stipulations will be applied to protect cave/karst and groundwater concerns:

### **Closed Loop System:**

- A closed loop system using steel tanks will be utilized during drilling – no pits
- All fluids and cuttings will be hauled off-site and disposed of properly at an authorized site

### **Rotary Drilling with Fresh Water:**

- Fresh water will be used as a circulating medium in zones where caves or karst features are expected. SEE ALSO: Drilling COAs for this well.

### **Directional Drilling:**

- The kick off point for directional drilling will occur at least 100 feet below the bottom of the cave occurrence zone. SEE ALSO: Drilling COAs for this well.

### **Lost Circulation:**

- ALL lost circulation zones between surface and the base of the cave occurrence zone will be logged and reported in the drilling report.
- If a void of four feet or more and circulation losses greater than 70 percent occur simultaneously while drilling in any cave-bearing zone, regardless of the type of drilling machinery used, the BLM will be notified immediately by the operator. The BLM will assess the situation and work with the operator on corrective actions to resolve the problem.

### **Abandonment Cementing:**

- Additional plugging conditions of approval may be required upon well abandonment in high and medium karst potential occurrence zones.
- The BLM will assess the situation and work with the operator to ensure proper plugging of the wellbore.

### **Pressure Testing:**

- The operator will perform annual pressure monitoring on all casing annuli and reported in a sundry notice.
- If the test results indicated a casing failure has occurred, remedial action will be undertaken to correct the problem to the BLM's approval.

### **Potash Resources**

Lessees must comply with the 2012 Secretarial Potash Order. The Order is designed to manage the efficient development of oil, gas, and potash resources.

Section 6 of the Order provides general provisions which must be followed to minimize conflict between the industries and ensure the safety of operations. To minimize impacts to potash resources, the proposed well is confined within the boundaries of the established Rana Salada Drill Island.

## **V. CONSTRUCTION**

### **A. NOTIFICATION**

The BLM shall administer compliance and monitor construction of the access road and well pad. Notify the Carlsbad Field Office at (575) 234-5909 at least 3 working days prior to commencing construction of the access road and/or well pad.

When construction operations are being conducted on this well, the operator shall have the approved APD and Conditions of Approval (COA) on the well site and they shall be made available upon request by the Authorized Officer.

### **B. TOPSOIL**

The operator shall strip the top portion of the soil (root zone) from the entire well pad area and stockpile the topsoil along the edge of the well pad as depicted in the APD. The root zone is typically six (6) inches in depth. All the stockpiled topsoil will be redistributed over the interim reclamation areas. Topsoil shall not be used for berming the pad or facilities. For final reclamation, the topsoil shall be spread over the entire pad area for seeding preparation.

Other subsoil (below six inches) stockpiles must be completely segregated from the topsoil stockpile. Large rocks or subsoil clods (not evident in the surrounding terrain) must be buried within the approved area for interim and final reclamation.

### **C. CLOSED LOOP SYSTEM**

Tanks are required for drilling operations: No Pits.

The operator shall properly dispose of drilling contents at an authorized disposal site.

### **D. FEDERAL MINERAL MATERIALS PIT**

Payment shall be made to the BLM prior to removal of any federal mineral materials. Call the Carlsbad Field Office at (575) 234-5972.

### **E. WELL PAD SURFACING**



Surfacing of the well pad is not required.

If the operator elects to surface the well pad, the surfacing material may be required to be removed at the time of reclamation. The well pad shall be constructed in a manner which creates the smallest possible surface disturbance, consistent with safety and operational needs.

## **F. EXCLOSURE FENCING (CELLARS & PITS)**

### **Exclosure Fencing**

The operator will install and maintain exclosure fencing for all open well cellars to prevent access to public, livestock, and large forms of wildlife before and after drilling operations until the pit is free of fluids and the operator initiates backfilling. (For examples of exclosure fencing design, refer to BLM's Oil and Gas Gold Book, Exclosure Fence Illustrations, Figure 1, Page 18.)

## **G. ON LEASE ACCESS ROADS**

### **Road Width**

The access road shall have a driving surface that creates the smallest possible surface disturbance and does not exceed fourteen (14) feet in width. The maximum width of surface disturbance, when constructing the access road, shall not exceed twenty-five (25) feet.

### **Surfacing**

Surfacing material is not required on the new access road driving surface. If the operator elects to surface the new access road or pad, the surfacing material may be required to be removed at the time of reclamation.

Where possible, no improvements should be made on the unsurfaced access road other than to remove vegetation as necessary, road irregularities, safety issues, or to fill low areas that may sustain standing water.

The Authorized Officer reserves the right to require surfacing of any portion of the access road at any time deemed necessary. Surfacing may be required in the event the road deteriorates, erodes, road traffic increases, or it is determined to be beneficial for future field development. The surfacing depth and type of material will be determined at the time of notification.

### **Crowning**

Crowning shall be done on the access road driving surface. The road crown shall have a grade of approximately 2% (i.e., a 1" crown on a 14' wide road). The road shall conform to Figure 1; cross section and plans for typical road construction.

### **Ditching**

Ditching shall be required on both sides of the road.

### Turnouts

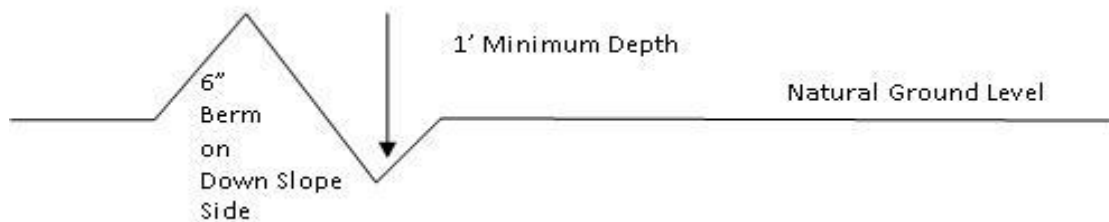
Vehicle turnouts shall be constructed on the road. Turnouts shall be intervisible with interval spacing distance less than 1000 feet. Turnouts shall conform to Figure 1; cross section and plans for typical road construction.

### Drainage

Drainage control systems shall be constructed on the entire length of road (e.g. ditches, sidehill outsloping and insloping, lead-off ditches, culvert installation, and low water crossings).

A typical lead-off ditch has a minimum depth of 1 foot below and a berm of 6 inches above natural ground level. The berm shall be on the down-slope side of the lead-off ditch.

#### Cross Section of a Typical Lead-off Ditch



All lead-off ditches shall be graded to drain water with a 1 percent minimum to 3 percent maximum ditch slope. The spacing interval are variable for lead-off ditches and shall be determined according to the formula for spacing intervals of lead-off ditches, but may be amended depending upon existing soil types and centerline road slope (in %);

#### Formula for Spacing Interval of Lead-off Ditches

Example - On a 4% road slope that is 400 feet long, the water flow shall drain water into a lead-off ditch. Spacing interval shall be determined by the following formula:

### Cattle guards

An appropriately sized cattle guard sufficient to carry out the project shall be installed and maintained at fence/road crossings. Any existing cattle guards on the access road route shall be repaired or replaced if they are damaged or have deteriorated beyond practical use. The operator shall be responsible for the

condition of the existing cattle guards that are in place and are utilized during lease operations.

**Fence Requirement**

Where entry is granted across a fence line, the fence shall be braced and tied off on both sides of the passageway prior to cutting. The operator shall notify the private surface landowner or the grazing allotment holder prior to crossing any fences.

**Public Access**

Public access on this road shall not be restricted by the operator without specific written approval granted by the Authorized Officer.

**Construction Steps**

1. Salvage topsoil
2. Construct road

3. Redistribute topsoil
4. Revegetate slopes



Figure 1. Cross-sections and plans for typical road sections representative of BLM resource or FS local and higher-class roads.



## VI. PRODUCTION (POST DRILLING)

### A. WELL STRUCTURES & FACILITIES

#### **Placement of Production Facilities**

Production facilities should be placed on the well pad to allow for maximum interim recontouring and revegetation of the well location.

#### **Exclosure Netting (Open-top Tanks)**

Immediately following active drilling or completion operations, the operator will take actions necessary to prevent wildlife and livestock access, including avian wildlife, to all open-topped tanks that contain or have the potential to contain salinity sufficient to cause harm to wildlife or livestock, hydrocarbons, or Resource Conservation and Recovery Act of 1976-exempt hazardous substances. At a minimum, the operator will net, screen, or cover open-topped tanks to exclude wildlife and livestock and prevent mortality. If the operator uses netting, the operator will cover and secure the open portion of the tank to prevent wildlife entry. The operator will net, screen, or cover the tanks until the operator removes the tanks from the location or the tanks no longer contain substances that could be harmful to wildlife or livestock. Use a maximum netting mesh size of 1 ½ inches. The netting must not be in contact with fluids and must not have holes or gaps.

#### **Chemical and Fuel Secondary Containment and Exclosure Screening**

The operator will prevent all hazardous, poisonous, flammable, and toxic substances from coming into contact with soil and water. At a minimum, the operator will install and maintain an impervious secondary containment system for any tank or barrel containing hazardous, poisonous, flammable, or toxic substances sufficient to contain the contents of the tank or barrel and any drips, leaks, and anticipated precipitation. The operator will dispose of fluids within the containment system that do not meet applicable state or U. S. Environmental Protection Agency livestock water standards in accordance with state law; the operator must not drain the fluids to the soil or ground. The operator will design, construct, and maintain all secondary containment systems to prevent wildlife and livestock exposure to harmful substances. At a minimum, the operator will install effective wildlife and livestock exclosure systems such as fencing, netting, expanded metal mesh, lids, and grate covers. Use a maximum netting mesh size of 1 ½ inches.

#### **Open-Vent Exhaust Stack Exclosures**

The operator will construct, modify, equip, and maintain all open-vent exhaust stacks on production equipment to prevent birds and bats from entering, and to discourage perching, roosting, and nesting. (*Recommended exclosure structures on open-vent exhaust stacks are in the shape of a cone.*) Production

equipment includes, but may not be limited to, tanks, heater-treaters, separators, dehydrators, flare stacks, in-line units, and compressor mufflers.

### **Containment Structures**

Proposed production facilities such as storage tanks and other vessels will have a secondary containment structure that is constructed to hold the capacity of 1.5 times the largest tank, plus freeboard to account for precipitation, unless more stringent protective requirements are deemed necessary.

### **Painting Requirement**

All above-ground structures including meter housing that are not subject to safety requirements shall be painted a flat non-reflective paint color, **Shale Green** from the BLM Standard Environmental Color Chart (CC-001: June 2008).

## **VII. INTERIM RECLAMATION**

During the life of the development, all disturbed areas not needed for active support of production operations should undergo interim reclamation in order to minimize the environmental impacts of development on other resources and uses.

Within six (6) months of well completion, operators should work with BLM surface management specialists (Jim Amos: 575-234-5909) to devise the best strategies to reduce the size of the location. Interim reclamation should allow for remedial well operations, as well as safe and efficient removal of oil and gas.

During reclamation, the removal of caliche is important to increasing the success of revegetating the site. Removed caliche that is free of contaminants may be used for road repairs, fire walls or for building other roads and locations. In order to operate the well or complete workover operations, it may be necessary to drive, park and operate on restored interim vegetation within the previously disturbed area. Disturbing revegetated areas for production or workover operations will be allowed. If there is significant disturbance and loss of vegetation, the area will need to be revegetated. Communicate with the appropriate BLM office for any exceptions/exemptions if needed.

All disturbed areas after they have been satisfactorily prepared need to be reseeded with the seed mixture provided below.

Upon completion of interim reclamation, the operator shall submit a Sundry Notices and Reports on Wells, Subsequent Report of Reclamation (Form 3160-5).

## **VIII. FINAL ABANDONMENT & RECLAMATION**

At final abandonment, well locations, production facilities, and access roads must undergo "final" reclamation so that the character and productivity of the land are restored.

Earthwork for final reclamation must be completed within six (6) months of well plugging. All pads, pits, facility locations and roads must be reclaimed to a satisfactory revegetated, safe, and stable condition, unless an agreement is made with the landowner or BLM to keep the road and/or pad intact.

After all disturbed areas have been satisfactorily prepared, these areas need to be revegetated with the seed mixture provided below. Seeding should be accomplished by drilling on the contour whenever practical or by other approved methods. Seeding may need to be repeated until revegetation is successful, as determined by the BLM.

Operators shall contact a BLM surface protection specialist prior to surface abandonment operations for site specific objectives (Jim Amos: 575-234-5909).

### Seed Mixture 2, for Sandy Sites

The holder shall seed all disturbed areas with the seed mixture listed below. The seed mixture shall be planted in the amounts specified in pounds of pure live seed (PLS)\* per acre. There shall be no primary or secondary noxious weeds in the seed mixture. Seed will be tested and the viability testing of seed will be done in accordance with State law (s) and within nine (9) months prior to purchase. Commercial seed will be either certified or registered seed. The seed container will be tagged in accordance with State law(s) and available for inspection by the authorized officer.

Seed will be planted using a drill equipped with a depth regulator to ensure proper depth of planting where drilling is possible. The seed mixture will be evenly and uniformly planted over the disturbed area (smaller/heavier seeds have a tendency to drop the bottom of the drill and are planted first). The holder shall take appropriate measures to ensure this does not occur. Where drilling is not possible, seed will be broadcast and the area shall be raked or chained to cover the seed. When broadcasting the seed, the pounds per acre are to be doubled. The seeding will be repeated until a satisfactory stand is established as determined by the authorized officer. Evaluation of growth will not be made before completion of at least one full growing season after seeding.

Species to be planted in pounds of pure live seed\* per acre:

<u>Species</u>	<u>lb/acre</u>
Sand dropseed ( <i>Sporobolus cryptandrus</i> )	1.0
Sand love grass ( <i>Eragrostis trichodes</i> )	1.0
Plains bristlegrass ( <i>Setaria macrostachya</i> )	2.0

\*Pounds of pure live seed:

Pounds of seed x percent purity x percent germination = pounds pure live seed



## PECOS DISTRICT DRILLING CONDITIONS OF APPROVAL

<b>OPERATOR'S NAME:</b>	<b>Nova Oil and Gas Northern Delaware LLC</b>
<b>LEASE NO.:</b>	<b>NMNM061349</b>
<b>WELL NAME &amp; NO.:</b>	Rana Salada Fed Com 0605 124H
<b>SURFACE HOLE FOOTAGE:</b>	231'S & 186'E
<b>BOTTOM HOLE FOOTAGE:</b>	330'S & 2540'E
<b>LOCATION:</b>	Section 1, T.23 S., R.28 E., NMPM
<b>COUNTY:</b>	Eddy County, New Mexico

COA

H2S	<input type="radio"/> Yes	<input checked="" type="radio"/> No	
Potash	<input type="radio"/> None	<input checked="" type="radio"/> Secretary	<input type="radio"/> R-111-P
Cave/Karst Potential	<input type="radio"/> Low	<input type="radio"/> Medium	<input checked="" type="radio"/> High
Cave/Karst Potential	<input type="radio"/> Critical		
Variance	<input type="radio"/> None	<input checked="" type="radio"/> Flex Hose	<input type="radio"/> Other
Wellhead	<input type="radio"/> Conventional	<input checked="" type="radio"/> Multibowl	<input type="radio"/> Both
Other	<input type="checkbox"/> 4 String Area	<input type="checkbox"/> Capitan Reef	<input type="checkbox"/> WIPP
Other	<input type="checkbox"/> Fluid Filled	<input type="checkbox"/> Cement Squeeze	<input type="checkbox"/> Pilot Hole
Special Requirements	<input type="checkbox"/> Water Disposal	<input checked="" type="checkbox"/> COM	<input type="checkbox"/> Unit

### A. HYDROGEN SULFIDE

Hydrogen Sulfide (H2S) monitors shall be installed prior to drilling out the surface shoe. If H2S is detected in concentrations greater than 100 ppm, the Hydrogen Sulfide area shall meet Onshore Order 6 requirements, which includes equipment and personnel/public protection items. If Hydrogen Sulfide is encountered, provide measured values and formations to the BLM.

### B. CASING

1. The **13-3/8** inch surface casing shall be set at approximately 348 feet (a minimum of **70 feet (Eddy County)** into the Rustler Anhydrite and above the salt) and cemented to the surface.
  - a. If cement does not circulate to the surface, the appropriate BLM office shall be notified and a temperature survey utilizing an electronic type temperature survey with surface log readout will be used or a cement bond log shall be run to verify the top of the cement. Temperature survey will be run a minimum of six hours after pumping cement and ideally between 8-10 hours after completing the cement job.
  - b. Wait on cement (WOC) time for a primary cement job will be a minimum of

**24 hours in the Potash Area** or 500 pounds compressive strength, whichever is greater. (This is to include the lead cement)

- c. Wait on cement (WOC) time for a remedial job will be a minimum of 4 hours after bringing cement to surface or 500 pounds compressive strength, whichever is greater.
  - d. If cement falls back, remedial cementing will be done prior to drilling out that string.
2. The minimum required fill of cement behind the **9-5/8** inch intermediate casing is:
- Cement to surface. If cement does not circulate see B.1.a, c-d above. **Excess cement calculates to 18%. Additional cement maybe required.**
- Wait on cement (WOC) time for a primary cement job is to include the lead cement slurry due to cave/karst or potash.**

❖ In Medium Cave/Karst Areas if cement does not circulate to surface on the first two casing strings, the cement on the 3rd casing string must come to surface.

❖ In Secretary Potash Areas if cement does not circulate to surface on the first two casing strings, the cement on the 3rd casing string must come to surface.

3. The minimum required fill of cement behind the **5-1/2** inch production casing is:
- Cement should tie-back at least **500 feet** into previous casing string. Operator shall provide method of verification.

### C. PRESSURE CONTROL

1. **Variance approved to use flex line from BOP to choke manifold. Manufacturer's specification to be readily available. No external damage to flex line. Flex line to be installed as straight as possible (no hard bends).'**
2. Operator has proposed a multi-bowl wellhead assembly. This assembly will only be tested when installed on the surface casing. Minimum working pressure of the blowout preventer (BOP) and related equipment (BOPE) required for drilling below the surface casing shoe shall be **5000 (5M)** psi.
  - a. Wellhead shall be installed by manufacturer's representatives, submit documentation with subsequent sundry.
  - b. If the welding is performed by a third party, the manufacturer's representative shall monitor the temperature to verify that it does not exceed the maximum temperature of the seal.
  - c. Manufacturer representative shall install the test plug for the initial BOP test.
  - d. If the cement does not circulate and one inch operations would have been possible with a standard wellhead, the well head shall be cut off, cementing operations performed and another wellhead installed.

- e. Whenever any seal subject to test pressure is broken, all the tests in OOGO2.III.A.2.i must be followed.

#### **D. SPECIAL REQUIREMENT (S)**

##### **Communitization Agreement**

- The operator will submit a Communitization Agreement to the Santa Fe Office, 301 Dinosaur Trail Santa Fe, New Mexico 87508, at least 90 days before the anticipated date of first production from a well subject to a spacing order issued by the New Mexico Oil Conservation Division. The Communitization Agreement will include the signatures of all working interest owners in all Federal and Indian leases subject to the Communitization Agreement (i.e., operating rights owners and lessees of record), or certification that the operator has obtained the written signatures of all such owners and will make those signatures available to the BLM immediately upon request.
- If the operator does not comply with this condition of approval, the BLM may take enforcement actions that include, but are not limited to, those specified in 43 CFR 3163.1.
- In addition, the well sign shall include the surface and bottom hole lease numbers. When the Communitization Agreement number is known, it shall also be on the sign.

## **GENERAL REQUIREMENTS**

The BLM is to be notified in advance for a representative to witness:

- a. Spudding well (minimum of 24 hours)
- b. Setting and/or Cementing of all casing strings (minimum of 4 hours)
- c. BOPE tests (minimum of 4 hours)

☒ Eddy County

Call the Carlsbad Field Office, 620 East Greene St., Carlsbad, NM 88220,  
(575) 361-2822

☒ Lea County

Call the Hobbs Field Station, 414 West Taylor, Hobbs NM 88240, (575)  
393-3612

1. Unless the production casing has been run and cemented or the well has been properly plugged, the drilling rig shall not be removed from over the hole without prior approval.
  - a. In the event the operator has proposed to drill multiple wells utilizing a skid/walking rig. Operator shall secure the wellbore on the current well, after installing and testing the wellhead, by installing a blind flange of like pressure



- rating to the wellhead and a pressure gauge that can be monitored while drilling is performed on the other well(s).
- b. **The operator is approve to set surface casing with Spudder Rig**
    - **Notify the BLM when moving in and removing the Spudder Rig.**
    - **Notify the BLM when moving in the 2<sup>nd</sup> Rig. Rig to be moved in within 90 days of notification that Spudder Rig has left the location.**
    - **BOP/BOPE test to be conducted per Onshore Oil and Gas Order No. 2 as soon as 2nd Rig is rigged up on well.**
2. Floor controls are required for 3M or Greater systems. These controls will be on the rig floor, unobstructed, readily accessible to the driller and will be operational at all times during drilling and/or completion activities. Rig floor is defined as the area immediately around the rotary table; the area immediately above the substructure on which the draw works are located, this does not include the dog house or stairway area.
  3. The record of the drilling rate along with the GR/N well log run from TD to surface (horizontal well – vertical portion of hole) shall be submitted to the BLM office as well as all other logs run on the borehole 30 days from completion. If available, a digital copy of the logs is to be submitted in addition to the paper copies. The Rustler top and top and bottom of Salt are to be recorded on the Completion Report.

#### A. CASING

1. Changes to the approved APD casing program need prior approval if the items substituted are of lesser grade or different casing size or are Non-API. The Operator can exchange the components of the proposal with that of superior strength (i.e. changing from J-55 to N-80, or from 36# to 40#). Changes to the approved cement program need prior approval if the altered cement plan has less volume or strength or if the changes are substantial (i.e. Multistage tool, ECP, etc.). The initial wellhead installed on the well will remain on the well with spools used as needed.
2. Wait on cement (WOC) for Potash Areas: After cementing but before commencing any tests, the casing string shall stand cemented under pressure until both of the following conditions have been met: 1) cement reaches a minimum compressive strength of 500 psi for all cement blends, 2) until cement has been in place at least 24 hours. WOC time will be recorded in the driller's log. The casing integrity test can be done (prior to the cement setting up) immediately after bumping the plug.
3. Wait on cement (WOC) for Water Basin: After cementing but before commencing any tests, the casing string shall stand cemented under pressure until both of the following conditions have been met: 1) cement reaches a minimum compressive strength of 500 psi at the shoe, 2) until cement has been in place at least 8 hours. WOC time will be recorded in the driller's log. See individual casing strings for details regarding lead cement slurry requirements. The casing integrity test can be done (prior to the cement setting up) immediately after bumping the plug.

4. Provide compressive strengths including hours to reach required 500 pounds compressive strength prior to cementing each casing string. Have well specific cement details onsite prior to pumping the cement for each casing string.
5. No pea gravel permitted for remedial or fall back remedial without prior authorization from the BLM engineer.
6. On that portion of any well approved for a 5M BOPE system or greater, a pressure integrity test of each casing shoe shall be performed. Formation at the shoe shall be tested to a minimum of the mud weight equivalent anticipated to control the formation pressure to the next casing depth or at total depth of the well. This test shall be performed before drilling more than 20 feet of new hole.
7. If hardband drill pipe is rotated inside casing, returns will be monitored for metal. If metal is found in samples, drill pipe will be pulled and rubber protectors which have a larger diameter than the tool joints of the drill pipe will be installed prior to continuing drilling operations.
8. Whenever a casing string is cemented in the R-111-P potash area, the NMOCD requirements shall be followed.

**B. PRESSURE CONTROL**

1. All blowout preventer (BOP) and related equipment (BOPE) shall comply with well control requirements as described in Onshore Oil and Gas Order No. 2 and API RP 53 Sec. 17.
2. If a variance is approved for a flexible hose to be installed from the BOP to the choke manifold, the following requirements apply: The flex line must meet the requirements of API 16C. Check condition of flexible line from BOP to choke manifold, replace if exterior is damaged or if line fails test. Line to be as straight as possible with no hard bends and is to be anchored according to Manufacturer's requirements. The flexible hose can be exchanged with a hose of equal size and equal or greater pressure rating. Anchor requirements, specification sheet and hydrostatic pressure test certification matching the hose in service, to be onsite for review. These documents shall be posted in the company man's trailer and on the rig floor.
3. 5M or higher system requires an HCR valve, remote kill line and annular to match. The remote kill line is to be installed prior to testing the system and tested to stack pressure.
4. If the operator has proposed a multi-bowl wellhead assembly in the APD. The following requirements must be met:
  - a. Wellhead shall be installed by manufacturer's representatives, submit documentation with subsequent sundry.

- b. If the welding is performed by a third party, the manufacturer's representative shall monitor the temperature to verify that it does not exceed the maximum temperature of the seal.
  - c. Manufacturer representative shall install the test plug for the initial BOP test.
  - d. Whenever any seal subject to test pressure is broken, all the tests in OOGO2.III.A.2.i must be followed.
  - e. If the cement does not circulate and one inch operations would have been possible with a standard wellhead, the well head shall be cut off, cementing operations performed and another wellhead installed.
5. The appropriate BLM office shall be notified a minimum of 4 hours in advance for a representative to witness the tests.
- a. In a water basin, for all casing strings utilizing slips, these are to be set as soon as the crew and rig are ready and any fallback cement remediation has been done. The casing cut-off and BOP installation can be initiated four hours after installing the slips, which will be approximately six hours after bumping the plug. For those casing strings not using slips, the minimum wait time before cut-off is eight hours after bumping the plug. BOP/BOPE testing can begin after cut-off or once cement reaches 500 psi compressive strength (including lead when specified), whichever is greater. However, if the float does not hold, cut-off cannot be initiated until cement reaches 500 psi compressive strength (including lead when specified).
  - b. In potash areas, for all casing strings utilizing slips, these are to be set as soon as the crew and rig are ready and any fallback cement remediation has been done. For all casing strings, casing cut-off and BOP installation can be initiated at twelve hours after bumping the plug. However, **no tests** shall commence until the cement has had a minimum of 24 hours setup time, except the casing pressure test can be initiated immediately after bumping the plug (only applies to single stage cement jobs).
  - c. The tests shall be done by an independent service company utilizing a test plug not a cup or J-packer. The operator also has the option of utilizing an independent tester to test without a plug (i.e. against the casing) pursuant to Onshore Order 2 with the pressure not to exceed 70% of the burst rating for the casing. Any test against the casing must meet the WOC time for water basin (8 hours) or potash (24 hours) or 500 pounds compressive strength, whichever is greater, prior to initiating the test (see casing segment as lead cement may be critical item).
  - d. The test shall be run on a 5000 psi chart for a 2-3M BOP/BOP, on a 10000 psi chart for a 5M BOP/BOPE and on a 15000 psi chart for a 10M BOP/BOPE. If a linear chart is used, it shall be a one hour chart. A circular chart shall



have a maximum 2 hour clock. If a twelve hour or twenty-four hour chart is used, tester shall make a notation that it is run with a two hour clock.

- e. The results of the test shall be reported to the appropriate BLM office.
- f. All tests are required to be recorded on a calibrated test chart. A copy of the BOP/BOPE test chart and a copy of independent service company test will be submitted to the appropriate BLM office.
- g. The BOP/BOPE test shall include a low pressure test from 250 to 300 psi. The test will be held for a minimum of 10 minutes if test is done with a test plug and 30 minutes without a test plug. This test shall be performed prior to the test at full stack pressure.
- h. BOP/BOPE must be tested by an independent service company within 500 feet of the top of the Wolfcamp formation if the time between the setting of the intermediate casing and reaching this depth exceeds 20 days. This test does not exclude the test prior to drilling out the casing shoe as per Onshore Order No. 2.

#### C. DRILLING MUD

Mud system monitoring equipment, with derrick floor indicators and visual and audio alarms, shall be operating before drilling into the Wolfcamp formation, and shall be used until production casing is run and cemented.

#### D. WASTE MATERIAL AND FLUIDS

All waste (i.e. drilling fluids, trash, salts, chemicals, sewage, gray water, etc.) created as a result of drilling operations and completion operations shall be safely contained and disposed of properly at a waste disposal facility. No waste material or fluid shall be disposed of on the well location or surrounding area.

Porto-johns and trash containers will be on-location during fracturing operations or any other crew-intensive operations.

**ZS022221**



### H<sub>2</sub>S Drilling Operations Plan

- a. All personnel will be trained in H<sub>2</sub>S working conditions as required by Onshore Order 6 before drilling out of the surface casing.
- b. Two briefing areas will be established. Each will be at least 150' from the wellhead, perpendicular from one another, and easily entered and exited. See H<sub>2</sub>S page 5 for more details.
- c. H<sub>2</sub>S Safety Equipment/Systems:
  - i. Well Control Equipment
    - Flare line will be  $\geq 150'$  from the wellhead and ignited by a pilot light.
    - Beware of SO<sub>2</sub> created by flaring.
    - Choke manifold will include a remotely operated choke.
    - Mud gas separator
  - ii. Protective Equipment for Essential Personnel
    - Every person on site will be required to wear a personal H<sub>2</sub>S and SO<sub>2</sub> monitor at all times while on site. Monitors will not be worn on hard hats. Monitors will be worn on the front of the chest.
    - One self-contained breathing apparatus (SCBA) 30-minute rescue pack will be at each briefing area. Two 30-minute SCBA packs will be stored in the safety trailer.
    - Four work/escape packs will be on the rig floor. Each pack will have a long enough hose to allow unimpaired work activity.
    - Four emergency escape packs will be in the doghouse for emergency evacuation.
    - Hand signals will be used when wearing protective breathing apparatus.
    - Stokes litter or stretcher
    - Two full OSHA compliant body harnesses
    - A 100-foot long x 5/8 inch OSHA compliant rope
    - One 20-pound ABC fire extinguisher

iii. H<sub>2</sub>S Detection & Monitoring Equipment

- Every person on site will be required to wear a personal H<sub>2</sub>S and SO<sub>2</sub> monitor at all times while on site. Monitors will not be worn on hard hats. Monitors will be worn on the front of the chest.
- A stationary detector with three sensors will be in the doghouse.
- Sensors will be installed on the rig floor, bell nipple, and at the end of the flow line or where drilling fluids are discharged.
- Visual alarm will be triggered at 10 ppm.
- Audible alarm will be triggered at 10 ppm.
- Calibration will occur at least every 30 days. Gas sample tubes will be kept in the safety trailer.

## iv. Visual Warning System

- Color-coded H<sub>2</sub>S condition sign will be set at the entrance to the pad.
- Color-coded condition flag will be installed to indicate current H<sub>2</sub>S conditions.
- Two wind socks will be installed that will be visible from all sides.

## v. Mud Program

- A water based mud with a pH of  $\geq 10$  will be maintained to control corrosion, H<sub>2</sub>S gas returns to the surface, and minimize sulfide stress cracking and embrittlement.
- Drilling mud containing H<sub>2</sub>S gas will be degassed at an optimum location for the rig configuration.
- This gas will be piped into the flare system.
- Enough mud additives will be on location to scavenge and/or neutralize H<sub>2</sub>S where formation pressures are unknown.

## vi. Metallurgy

- All equipment that has the potential to be exposed to H<sub>2</sub>S will be suitable for H<sub>2</sub>S service.
- Equipment that will meet these metallurgical standards include the drill string, casing, wellhead, BOP assembly, casing head and spool, rotating head, kill lines, choke, choke manifold and lines, valves, mud-gas separators, DST tools, test units, tubing, flanges, and other related equipment (elastomer packings and seals).

## vii. Communication from well site

- Cell phones and/or two-way radios will be used to communicate from the well site.

d. A remote-controlled choke, mud-gas separator, and a rotating head will be installed before drilling or testing any formation expected to contain H<sub>2</sub>S.

Company Personnel to be Notified

Kurt Shipley, Vice-President - Operations                      Office: (405) 609-1596

Local & County Agencies

Loving Fire Department	911 or (575) 745-3600
Eddy County Sheriff (Carlsbad)	911 (575) 887-7551
Eddy County Emergency Management (Carlsbad)	(575) 887-9511
Carlsbad Medical Center Hospital	(575) 887-4100
Eddy County South Road Department (Carlsbad)	(575) 885-4835

State Agencies

NM State Police (Carlsbad)	(575) 885-3138
NM Oil Conservation (Artesia)	(575) 748-1283
NM Oil Conservation (Santa Fe)	(505) 476-3440
NM Dept. of Transportation (Roswell)	(575) 637-7201

Federal Agencies

BLM Carlsbad Field Office	(575) 234-5972
National Response Center	(800) 424-8802
US EPA Region 6 (Dallas)	(800) 887-6063
	(214) 665-6444



Residents within 2 miles

none

Air Evacuation

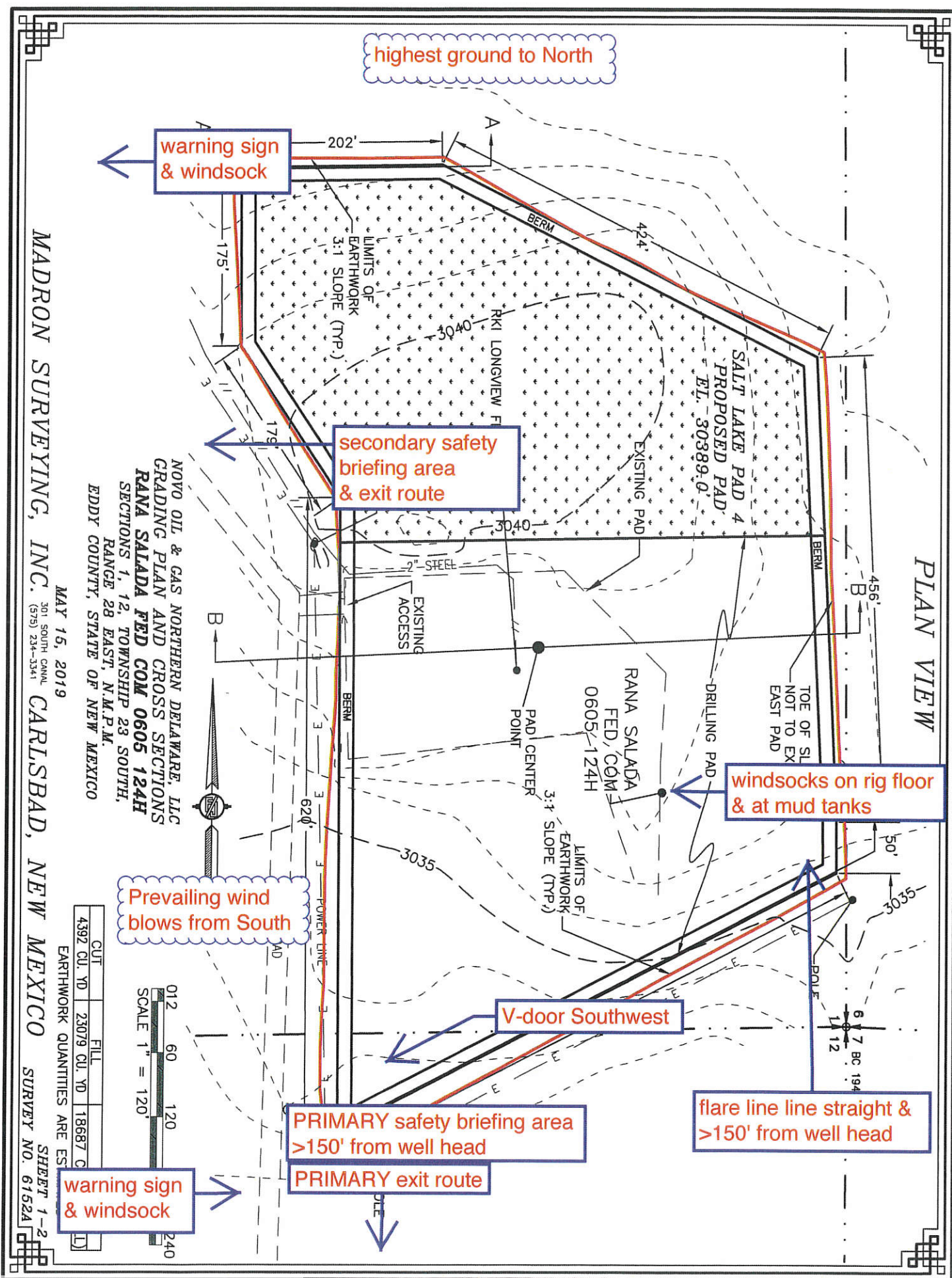
Med Flight Air Ambulance (Albuquerque) (800) 842-4431

Lifeguard (Albuquerque) (888) 866-7256

Veterinarians

Desert Willow Veterinary Services (Carlsbad) (575) 885-3399

Animal Care Center (Carlsbad) (575) 885-5352



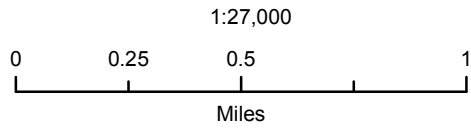


# Novo Oil and Gas Northern Delaware

Rana Salada Fed Com 0605  
Salt Lake Pad 4  
H<sub>2</sub>S Contingency Plan:  
Radius Map

Section 1, Township 23S, Range 28E  
Eddy County, New Mexico

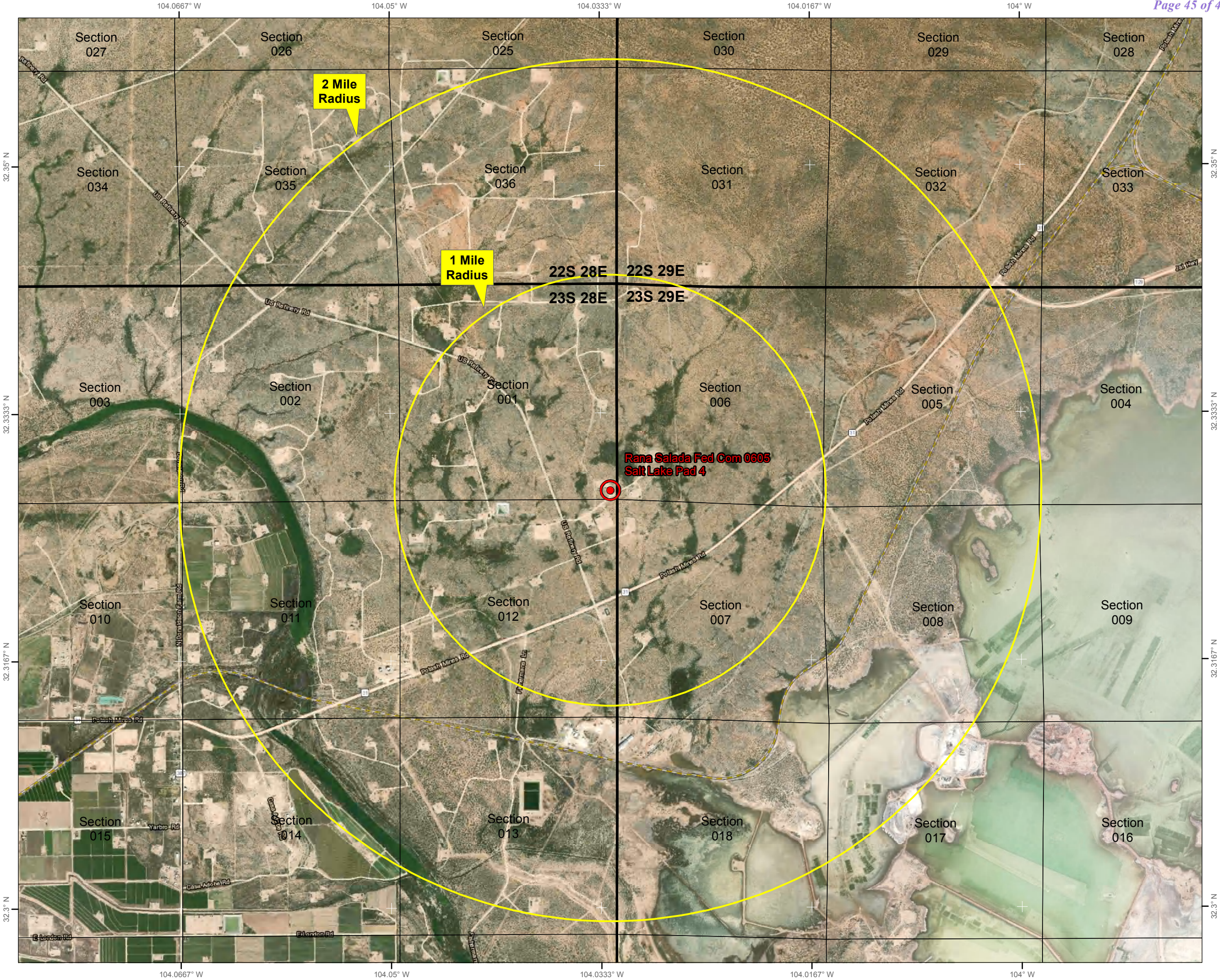
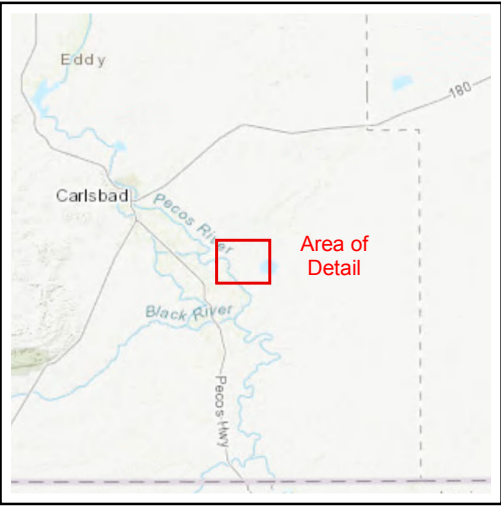
 Well Pad Location



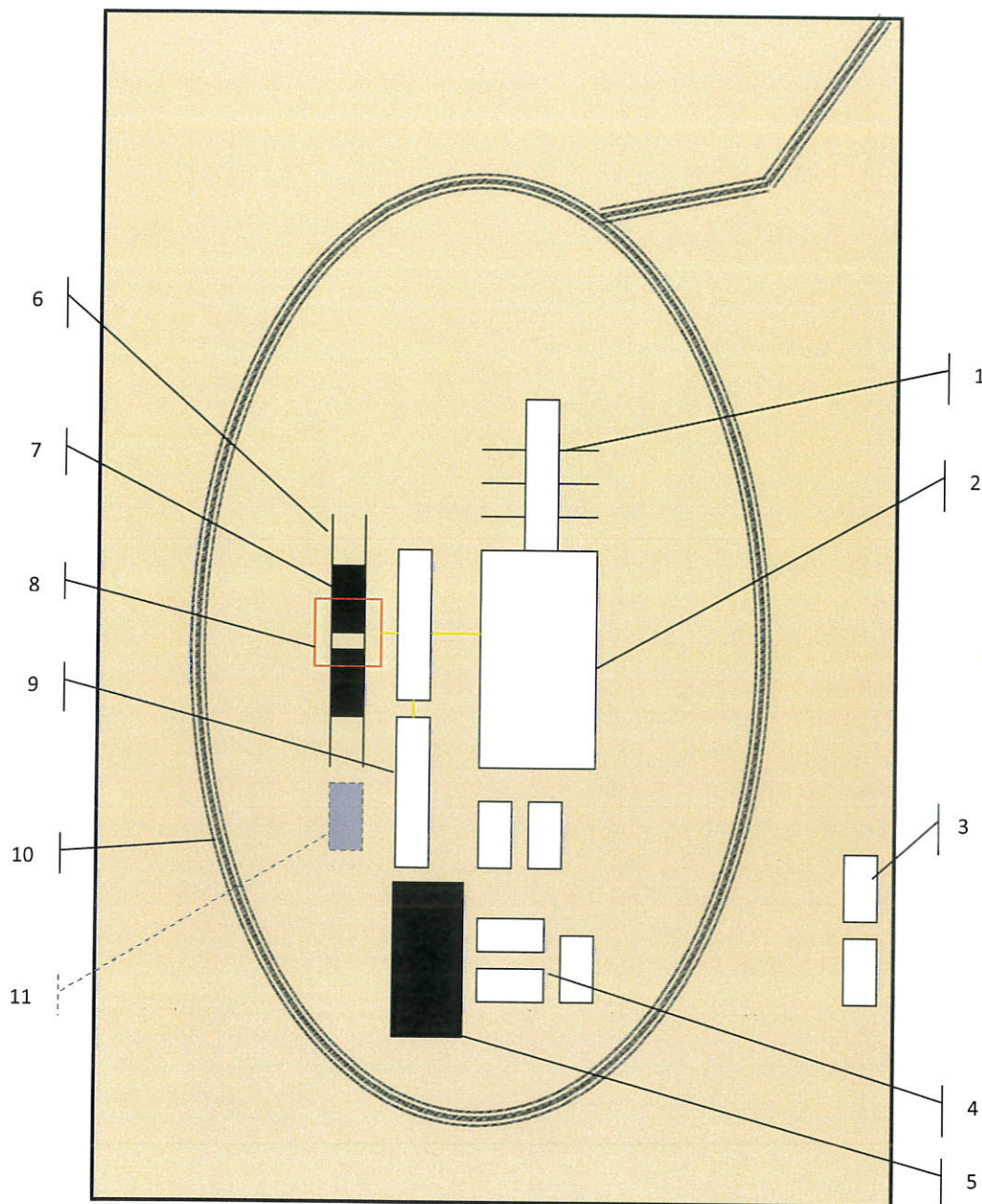
NAD 1983 New Mexico State Plane East  
FIPS 3001 Feet



Prepared by Permits West, Inc., August 13, 2019  
for Novo Oil and Gas Northern Delaware, LLC







Schematic Closed Loop Drilling Rig\*

1. Pipe Rack
2. Drill Rig
3. House Trailers/ Offices
4. Generator/Fuel/Storage
5. Overflow-Frac Tank
6. Skids
7. Roll Offs
8. Hopper or Centrifuge
9. Mud Tanks
10. Loop Drive
11. Generator (only for use with centrifuge)

\*Not drawn to scale: Closed loop system requires at least 30 feet beyond mud tanks. Ideally 60 feet would be available

**PERMITS WEST, INC.**  
 PROVIDING PERMITS for LAND USERS  
 37Verano Loop, Santa Fe, New Mexico 87508 (505) 466-8120



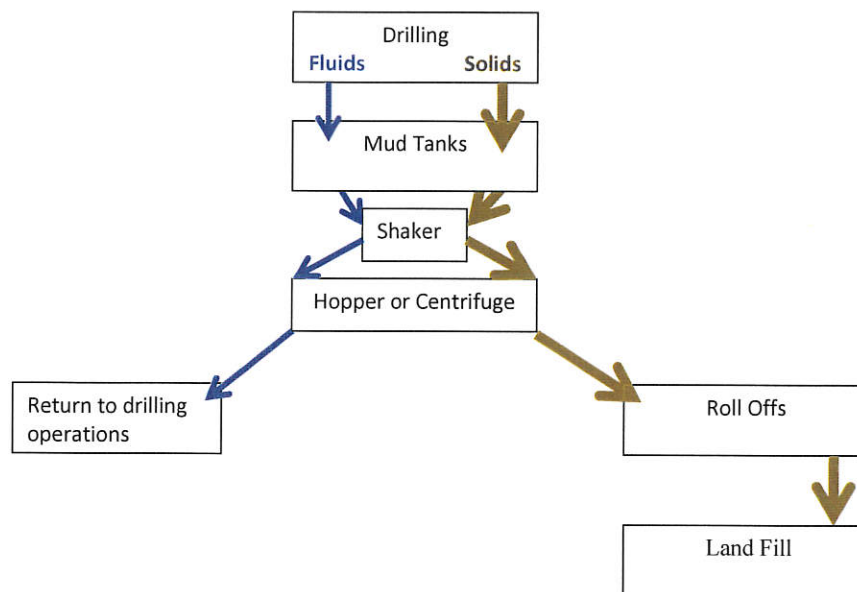
Above: Centrifugal Closed Loop System





Closed Loop Drilling System: Mud tanks to right (1)  
 Hopper in air to settle out solids (2)  
 Water return pipe (3)  
 Shaker between hopper and mud tanks (4)  
 Roll offs on skids (5)

#### Flow Chart for Drilling Fluids and Solids



Photos Courtesy of Gandy Corporation Oil  
 Field Service

**PERMITS WEST**, INC.  
 PROVIDING PERMITS for LAND USERS  
 37Verano Loop, Santa Fe, New Mexico 87508 (505) 466-8120

**District I**

1625 N. French Dr., Hobbs, NM 88240  
Phone:(575) 393-6161 Fax:(575) 393-0720

**District II**

811 S. First St., Artesia, NM 88210  
Phone:(575) 748-1283 Fax:(575) 748-9720

**District III**

1000 Rio Brazos Rd., Aztec, NM 87410  
Phone:(505) 334-6178 Fax:(505) 334-6170

**District IV**

1220 S. St Francis Dr., Santa Fe, NM 87505  
Phone:(505) 476-3470 Fax:(505) 476-3462

**State of New Mexico**  
**Energy, Minerals and Natural Resources**  
**Oil Conservation Division**  
**1220 S. St Francis Dr.**  
**Santa Fe, NM 87505**

COMMENTS

Action 25310

**COMMENTS**

Operator:		OGRID:	Action Number:	Action Type:
NOVO OIL & GAS NORTHERN DELAWA	1001 West Wilshire Blvd	372920	25310	FORM 3160-3
Suite 206	Oklahoma City, OK73116			

Created By	Comment	Comment Date
kpickford	KP GEO Review 4/26/2021	04/26/2021

**District I**

1625 N. French Dr., Hobbs, NM 88240  
Phone:(575) 393-6161 Fax:(575) 393-0720

**District II**

811 S. First St., Artesia, NM 88210  
Phone:(575) 748-1283 Fax:(575) 748-9720

**District III**

1000 Rio Brazos Rd., Aztec, NM 87410  
Phone:(505) 334-6178 Fax:(505) 334-6170

**District IV**

1220 S. St Francis Dr., Santa Fe, NM 87505  
Phone:(505) 476-3470 Fax:(505) 476-3462

**State of New Mexico**  
**Energy, Minerals and Natural Resources**  
**Oil Conservation Division**  
**1220 S. St Francis Dr.**  
**Santa Fe, NM 87505**

CONDITIONS

Action 25310

**CONDITIONS OF APPROVAL**

Operator:	NOVO OIL & GAS NORTHERN DELAWA	1001 West Wilshire Blvd	OGRID:	372920	Action Number:	25310	Action Type:	FORM 3160-3
	Suite 206	Oklahoma City, OK73116						

OCD Reviewer	Condition
kpickford	Notify OCD 24 hours prior to casing & cement
kpickford	Will require a File As Drilled C-102 and a Directional Survey with the C-104
kpickford	Once the well is spud, to prevent ground water contamination through whole or partial conduits from the surface, the operator shall drill without interruption through the fresh water zone or zones and shall immediately set in cement the water protection string
kpickford	Cement is required to circulate on both surface and intermediate1 strings of casing
kpickford	Oil base muds are not to be used until fresh water zones are cased and cemented providing isolation from the oil or diesel. This includes synthetic oils. Oil based mud, drilling fluids and solids must be contained in a steel closed loop system