

Form 3160-3
(June 2015)UNITED STATES
DEPARTMENT OF THE INTERIOR
BUREAU OF LAND MANAGEMENT

APPLICATION FOR PERMIT TO DRILL OR REENTER

FORM APPROVED
OMB No. 1004-0137
Expires: January 31, 20185. Lease Serial No.
NMNM014164

6. If Indian, Allottee or Tribe Name

7. If Unit or CA Agreement, Name and No.

8. Lease Name and Well No.

SAKER 6-7 FEDERAL COM
[330848]
35H9. API Well No.
30-025-4893610. Field and Pool, or Exploratory [2220]
OJO CHISO; WOLFCAMP SOUTHWEST11. Sec., T. R. M. or Blk. and Survey or Area
SEC 6/T24S/R35E/NMP1a. Type of work: ☒ DRILL ☐ REENTER
1b. Type of Well: ☒ Oil Well ☐ Gas Well ☐ Other
1c. Type of Completion: ☐ Hydraulic Fracturing ☐ Single Zone ☒ Multiple Zone2. Name of Operator [16696]
OXY USA INCORPORATED3a. Address
P O BOX 50250, MIDLAND, TX 797103b. Phone No. (include area code)
(143) 268-55714. Location of Well (Report location clearly and in accordance with any State requirements. *)
At surface LOT 3 / 200 FNL / 1995 FWL / LAT 32.253263 / LONG -103.408742
At proposed prod. zone SESW / 20 FSL / 1330 FWL / LAT 32.224838 / LONG -103.41087214. Distance in miles and direction from nearest town or post office*
28.3 miles12. County or Parish
LEA13. State
NM15. Distance from proposed* location to nearest property or lease line, ft.
(Also to nearest drig. unit line, if any) 20 feet

16. No of acres in lease

17. Spacing Unit dedicated to this well
640.54

18. Distance from proposed location* to nearest well, drilling, completed, applied for, on this lease, ft. 35 feet

19. Proposed Depth
12068 feet / 21904 feet20. BLM/BIA Bond No. in file
FED: ESB00022621. Elevations (Show whether DF, KDB, RT, GL, etc.)
3450 feet22. Approximate date work will start*
03/01/202123. Estimated duration
45 days

24. Attachments

The following, completed in accordance with the requirements of Onshore Oil and Gas Order No. 1, and the Hydraulic Fracturing rule per 43 CFR 3162.3-3 (as applicable)

- | | |
|---|---|
| 1. Well plat certified by a registered surveyor.
2. A Drilling Plan.
3. A Surface Use Plan (if the location is on National Forest System Lands, the SUPO must be filed with the appropriate Forest Service Office). | 4. Bond to cover the operations unless covered by an existing bond on file (see Item 20 above).
5. Operator certification.
6. Such other site specific information and/or plans as may be requested by the BLM. |
|---|---|

25. Signature
(Electronic Submission)Name (Printed/Typed)
LESLIE REEVES / Ph: (713) 366-5716Date
08/07/2020Title
Advisor RegulatoryApproved by (Signature)
(Electronic Submission)Name (Printed/Typed)
Cody Layton / Ph: (575) 234-5959Date
04/21/2021Title
Assistant Field Manager Lands & MineralsOffice
Carlsbad Field OfficeApplication approval does not warrant or certify that the applicant holds legal or equitable title to those rights in the subject lease which would entitle the applicant to conduct operations thereon.
Conditions of approval, if any, are attached.

Title 18 U.S.C. Section 1001 and Title 43 U.S.C. Section 1212, make it a crime for any person knowingly and willfully to make to any department or agency of the United States any false, fictitious or fraudulent statements or representations as to any matter within its jurisdiction.

GCP Rec 04/26/2021

SL

(Continued on page 2)

KZ
05/28/2021

*(Instructions on page 2)

PECOS DISTRICT DRILLING CONDITIONS OF APPROVAL

OPERATOR'S NAME:	OXY USA INC.
LEASE NO.:	NMNM014164
LOCATION:	Section 6, T.24 S., R.35 E., NMP
COUNTY:	Lea County, New Mexico

WELL NAME & NO.:	SAKER 6-7 FEDERAL COM 31H
SURFACE HOLE FOOTAGE:	200'/N & 1960'/W
BOTTOM HOLE FOOTAGE:	20'/S & 1000'/W

WELL NAME & NO.:	SAKER 6-7 FEDERAL COM 32H
SURFACE HOLE FOOTAGE:	180'/N & 950'/E
BOTTOM HOLE FOOTAGE:	20'/S & 2306'/E

WELL NAME & NO.:	SAKER 6-7 FEDERAL COM 33H
SURFACE HOLE FOOTAGE:	180'/N & 885'/E
BOTTOM HOLE FOOTAGE:	20'/S & 1000'/E

WELL NAME & NO.:	SAKER 6-7 FEDERAL COM 34H
SURFACE HOLE FOOTAGE:	200'/N & 1930'/W
BOTTOM HOLE FOOTAGE:	20'/S & 660'/W

WELL NAME & NO.:	SAKER 6-7 FEDERAL COM 35H
SURFACE HOLE FOOTAGE:	200'/N & 1995'/W
BOTTOM HOLE FOOTAGE:	20'/S & 1640'/W

WELL NAME & NO.:	SAKER 6-7 FEDERAL COM 36H
SURFACE HOLE FOOTAGE:	200'/N & 2030'/W
BOTTOM HOLE FOOTAGE:	20'/S & 2301'/W

WELL NAME & NO.:	SAKER 6-7 FEDERAL COM 37H
SURFACE HOLE FOOTAGE:	190'/N & 920'/E
BOTTOM HOLE FOOTAGE:	20'/S & 1640'/E

WELL NAME & NO.:	SAKER 6-7 FEDERAL COM 38H
SURFACE HOLE FOOTAGE:	180'/N & 850'/E
BOTTOM HOLE FOOTAGE:	20'/S & 331'/E

COA

H2S	<input type="radio"/> Yes	<input checked="" type="radio"/> No	
Potash	<input checked="" type="radio"/> None	<input type="radio"/> Secretary	<input type="radio"/> R-111-P

Cave/Karst Potential	<input checked="" type="radio"/> Low	<input type="radio"/> Medium	<input type="radio"/> High
Cave/Karst Potential	<input type="radio"/> Critical		
Variance	<input type="radio"/> None	<input checked="" type="radio"/> Flex Hose	<input type="radio"/> Other
Wellhead	<input type="radio"/> Conventional	<input type="radio"/> Multibowl	<input checked="" type="radio"/> Both
Other	<input type="checkbox"/> 4 String Area	<input type="checkbox"/> Capitan Reef	<input type="checkbox"/> WIPP
Other	<input checked="" type="checkbox"/> Fluid Filled	<input checked="" type="checkbox"/> Cement Squeeze	<input type="checkbox"/> Pilot Hole
Special Requirements	<input type="checkbox"/> Water Disposal	<input checked="" type="checkbox"/> COM	<input type="checkbox"/> Unit

A. HYDROGEN SULFIDE

Hydrogen Sulfide (H₂S) monitors shall be installed prior to drilling out the surface shoe. If H₂S is detected in concentrations greater than 100 ppm, the Hydrogen Sulfide area shall meet Onshore Order 6 requirements, which includes equipment and personnel/public protection items. If Hydrogen Sulfide is encountered, provide measured values and formations to the BLM.

B. CASING

Casing Design:

1. The **10-3/4** inch surface casing shall be set at approximately **997** feet (a minimum of **25 feet (Lea County)**) into the Rustler Anhydrite and above the salt) and cemented to the surface.
 - a. If cement does not circulate to the surface, the appropriate BLM office shall be notified and a temperature survey utilizing an electronic type temperature survey with surface log readout will be used or a cement bond log shall be run to verify the top of the cement. Temperature survey will be run a minimum of six hours after pumping cement and ideally between 8-10 hours after completing the cement job.
 - b. Wait on cement (WOC) time for a primary cement job will be a minimum of **8 hours** or 500 pounds compressive strength, whichever is greater. (This is to include the lead cement)
 - c. Wait on cement (WOC) time for a remedial job will be a minimum of 4 hours after bringing cement to surface or 500 pounds compressive strength, whichever is greater.
 - d. If cement falls back, remedial cementing will be done prior to drilling out that string.

Intermediate casing must be kept fluid filled to meet BLM minimum collapse requirement.

2. The **7-5/8** inch intermediate casing shall be set at approximately **10902** feet. The minimum required fill of cement behind the **7-5/8** inch intermediate casing is:

Option 1 (Single Stage):

- Cement to surface. If cement does not circulate see B.1.a, c-d above.

Option 2:

Operator has proposed a DV tool, the depth may be adjusted as long as the cement is changed proportionally. The DV tool may be cancelled if cement circulates to surface on the first stage.

- a. First stage to DV tool: Cement to circulate. If cement does not circulate off the DV tool, contact the appropriate BLM office before proceeding with second stage cement job.
- b. Second stage above DV tool:
 - Cement to surface. If cement does not circulate, contact the appropriate BLM office.

Operator has proposed to pump down 10-3/4" X 7-5/8" annulus. Operator must run a CBL or ECHO-METER from TD of the 7-5/8" casing to surface. Submit results to BLM.

3. The minimum required fill of cement behind the 5-1/2 inch production casing is:

Option 1 (Single Stage):

- Cement should tie-back at least **200 feet** into previous casing string. Operator shall provide method of verification.

Option 2:

Operator has proposed a DV tool, the depth may be adjusted as long as the cement is changed proportionally. The DV tool may be cancelled if cement circulates to surface on the first stage.

- a. First stage to DV tool: Cement to circulate. If cement does not circulate off the DV tool, contact the appropriate BLM office before proceeding with second stage cement job.
- b. Second stage above DV tool:
 - Cement should tie-back at least **200 feet** into previous casing string. Operator shall provide method of verification.

C. PRESSURE CONTROL

1. Variance approved to use flex line from BOP to choke manifold. Manufacturer's specification to be readily available. No external damage to flex line. Flex line to be installed as straight as possible (no hard bends).'
- 2.

Option 1:

- a. Minimum working pressure of the blowout preventer (BOP) and related equipment (BOPE) required for drilling below the surface casing shoe shall be **5000 (5M)** psi.
- b. Minimum working pressure of the blowout preventer (BOP) and related equipment (BOPE) required for drilling below the intermediate casing shoe shall be **5000 (5M)** psi.

Option 2:

1. Operator has proposed a multi-bowl wellhead assembly. This assembly will only be tested when installed on the surface casing. Minimum working pressure of the blowout preventer (BOP) and related equipment (BOPE) required for drilling below the surface casing shoe shall be **5000 (5M)** psi.
 - a. Wellhead shall be installed by manufacturer's representatives, submit documentation with subsequent sundry.
 - b. If the welding is performed by a third party, the manufacturer's representative shall monitor the temperature to verify that it does not exceed the maximum temperature of the seal.
 - c. Manufacturer representative shall install the test plug for the initial BOP test.
 - d. If the cement does not circulate and one inch operations would have been possible with a standard wellhead, the well head shall be cut off, cementing operations performed and another wellhead installed.
 - e. Whenever any seal subject to test pressure is broken, all the tests in OOGO2.III.A.2.i must be followed.

D. SPECIAL REQUIREMENT (S)

Communitization Agreement

- The operator will submit a Communitization Agreement to the Santa Fe Office, 301 Dinosaur Trail Santa Fe, New Mexico 87508, at least 90 days before the anticipated date of first production from a well subject to a spacing order issued by the New Mexico Oil Conservation Division. The Communitization Agreement will include the signatures of all working interest owners in all Federal and Indian leases subject to the Communitization Agreement (i.e., operating rights owners and lessees of record), or certification that the operator has obtained the written signatures of all such owners and will make those signatures available to the BLM immediately upon request.

- If the operator does not comply with this condition of approval, the BLM may take enforcement actions that include, but are not limited to, those specified in 43 CFR 3163.1.
- In addition, the well sign shall include the surface and bottom hole lease numbers. When the Communitization Agreement number is known, it shall also be on the sign.

Offline Cementing

- Contact the BLM prior to the commencement of any offline cementing procedure.

BOPE Break Testing Variance

- BOPE Break Testing is ONLY permitted for 5M BOPE or less.
- BOPE Break Testing is NOT permitted to drilling the production hole section.
- While in transfer between wells, the BOPE shall be secured by the hydraulic carrier or cradle.
- Any well control event while drilling require notification to the BLM Petroleum Engineer prior to the commencement of any BOPE Break Testing operations.
- A full BOPE test is required prior to drilling the first deep intermediate hole section. If any subsequent hole interval is deeper than the first, a full BOPE test will be required.
- The BLM is to be contacted (**575-393-3612 Lea County**) 4 hours prior to BOPE tests.
- As a minimum, a full BOPE test shall be performed at 21-day intervals. In the event any repairs or replacement of the BOPE is required, the BOPE shall test as per Onshore Oil and Gas Order No. 2.

GENERAL REQUIREMENTS

The BLM is to be notified in advance for a representative to witness:

- a. Spudding well (minimum of 24 hours)
- b. Setting and/or Cementing of all casing strings (minimum of 4 hours)
- c. BOPE tests (minimum of 4 hours)

☒ Eddy County

Call the Carlsbad Field Office, 620 East Greene St., Carlsbad, NM 88220,
(575) 361-2822

☒ Lea County

Call the Hobbs Field Station, 414 West Taylor, Hobbs NM 88240, (575)
393-3612

1. Unless the production casing has been run and cemented or the well has been properly plugged, the drilling rig shall not be removed from over the hole without prior approval.
 - a. In the event the operator has proposed to drill multiple wells utilizing a skid/walking rig. Operator shall secure the wellbore on the current well, after installing and testing the wellhead, by installing a blind flange of like pressure rating to the wellhead and a pressure gauge that can be monitored while drilling is performed on the other well(s).
 - b. When the operator proposes to set surface casing with Spudder Rig
 - Notify the BLM when moving in and removing the Spudder Rig.
 - Notify the BLM when moving in the 2nd Rig. Rig to be moved in within 90 days of notification that Spudder Rig has left the location.
 - BOP/BOPE test to be conducted per Onshore Oil and Gas Order No. 2 as soon as 2nd Rig is rigged up on well.
2. Floor controls are required for 3M or Greater systems. These controls will be on the rig floor, unobstructed, readily accessible to the driller and will be operational at all times during drilling and/or completion activities. Rig floor is defined as the area immediately around the rotary table; the area immediately above the substructure on which the draw works are located, this does not include the dog house or stairway area.
3. The record of the drilling rate along with the GR/N well log run from TD to surface (horizontal well – vertical portion of hole) shall be submitted to the BLM office as well as all other logs run on the borehole 30 days from completion. If available, a digital copy of the logs is to be submitted in addition to the paper copies. The Rustler top and top and bottom of Salt are to be recorded on the Completion Report.

A. CASING

1. Changes to the approved APD casing program need prior approval if the items substituted are of lesser grade or different casing size or are Non-API. The Operator can exchange the components of the proposal with that of superior strength (i.e. changing from J-55 to N-80, or from 36# to 40#). Changes to the approved cement program need prior approval if the altered cement plan has less volume or strength or if the changes are substantial (i.e. Multistage tool, ECP, etc.). The initial wellhead installed on the well will remain on the well with spools used as needed.
2. Wait on cement (WOC) for Potash Areas: After cementing but before commencing any tests, the casing string shall stand cemented under pressure until both of the following conditions have been met: 1) cement reaches a minimum compressive strength of 500 psi for all cement blends, 2) until cement has been in place at least 24 hours. WOC time will be recorded in the driller's log. The casing integrity test can be done (prior to the cement setting up) immediately after bumping the plug.
3. Wait on cement (WOC) for Water Basin: After cementing but before commencing any tests, the casing string shall stand cemented under pressure until both of the following conditions have been met: 1) cement reaches a minimum compressive strength of 500 psi at the shoe, 2) until cement has been in place at least 8 hours. WOC time will be recorded in the driller's log. See individual casing strings for details regarding lead cement slurry requirements. The casing integrity test can be done (prior to the cement setting up) immediately after bumping the plug.
4. Provide compressive strengths including hours to reach required 500 pounds compressive strength prior to cementing each casing string. Have well specific cement details onsite prior to pumping the cement for each casing string.
5. No pea gravel permitted for remedial or fall back remedial without prior authorization from the BLM engineer.
6. On that portion of any well approved for a 5M BOPE system or greater, a pressure integrity test of each casing shoe shall be performed. Formation at the shoe shall be tested to a minimum of the mud weight equivalent anticipated to control the formation pressure to the next casing depth or at total depth of the well. This test shall be performed before drilling more than 20 feet of new hole.
7. If hardband drill pipe is rotated inside casing, returns will be monitored for metal. If metal is found in samples, drill pipe will be pulled and rubber protectors which have a larger diameter than the tool joints of the drill pipe will be installed prior to continuing drilling operations.
8. Whenever a casing string is cemented in the R-111-P potash area, the NMOCD requirements shall be followed.

B. PRESSURE CONTROL

1. All blowout preventer (BOP) and related equipment (BOPE) shall comply with well control requirements as described in Onshore Oil and Gas Order No. 2 and API RP 53 Sec. 17.
2. If a variance is approved for a flexible hose to be installed from the BOP to the choke manifold, the following requirements apply: The flex line must meet the requirements of API 16C. Check condition of flexible line from BOP to choke manifold, replace if exterior is damaged or if line fails test. Line to be as straight as possible with no hard bends and is to be anchored according to Manufacturer's requirements. The flexible hose can be exchanged with a hose of equal size and equal or greater pressure rating. Anchor requirements, specification sheet and hydrostatic pressure test certification matching the hose in service, to be onsite for review. These documents shall be posted in the company man's trailer and on the rig floor.
3. 5M or higher system requires an HCR valve, remote kill line and annular to match. The remote kill line is to be installed prior to testing the system and tested to stack pressure.
4. If the operator has proposed a multi-bowl wellhead assembly in the APD. The following requirements must be met:
 - a. Wellhead shall be installed by manufacturer's representatives, submit documentation with subsequent sundry.
 - b. If the welding is performed by a third party, the manufacturer's representative shall monitor the temperature to verify that it does not exceed the maximum temperature of the seal.
 - c. Manufacturer representative shall install the test plug for the initial BOP test.
 - d. Whenever any seal subject to test pressure is broken, all the tests in OOGO2.III.A.2.i must be followed.
 - e. If the cement does not circulate and one inch operations would have been possible with a standard wellhead, the well head shall be cut off, cementing operations performed and another wellhead installed.
5. The appropriate BLM office shall be notified a minimum of 4 hours in advance for a representative to witness the tests.
 - a. In a water basin, for all casing strings utilizing slips, these are to be set as soon as the crew and rig are ready and any fallback cement remediation has been done. The casing cut-off and BOP installation can be initiated four hours after installing the slips, which will be approximately six hours after bumping the plug. For those casing strings not using slips, the minimum wait time before cut-off is eight hours after bumping the plug. BOP/BOPE testing can begin after cut-off or once cement reaches 500 psi compressive strength (including

lead when specified), whichever is greater. However, if the float does not hold, cut-off cannot be initiated until cement reaches 500 psi compressive strength (including lead when specified).

- b. In potash areas, for all casing strings utilizing slips, these are to be set as soon as the crew and rig are ready and any fallback cement remediation has been done. For all casing strings, casing cut-off and BOP installation can be initiated at twelve hours after bumping the plug. However, **no tests** shall commence until the cement has had a minimum of 24 hours setup time, except the casing pressure test can be initiated immediately after bumping the plug (only applies to single stage cement jobs).
- c. The tests shall be done by an independent service company utilizing a test plug not a cup or J-packer. The operator also has the option of utilizing an independent tester to test without a plug (i.e. against the casing) pursuant to Onshore Order 2 with the pressure not to exceed 70% of the burst rating for the casing. Any test against the casing must meet the WOC time for water basin (8 hours) or potash (24 hours) or 500 pounds compressive strength, whichever is greater, prior to initiating the test (see casing segment as lead cement may be critical item).
- d. The test shall be run on a 5000 psi chart for a 2-3M BOP/BOP, on a 10000 psi chart for a 5M BOP/BOPE and on a 15000 psi chart for a 10M BOP/BOPE. If a linear chart is used, it shall be a one hour chart. A circular chart shall have a maximum 2 hour clock. If a twelve hour or twenty-four hour chart is used, tester shall make a notation that it is run with a two hour clock.
- e. The results of the test shall be reported to the appropriate BLM office.
- f. All tests are required to be recorded on a calibrated test chart. A copy of the BOP/BOPE test chart and a copy of independent service company test will be submitted to the appropriate BLM office.
- g. The BOP/BOPE test shall include a low pressure test from 250 to 300 psi. The test will be held for a minimum of 10 minutes if test is done with a test plug and 30 minutes without a test plug. This test shall be performed prior to the test at full stack pressure.
- h. BOP/BOPE must be tested by an independent service company within 500 feet of the top of the Wolfcamp formation if the time between the setting of the intermediate casing and reaching this depth exceeds 20 days. This test does not exclude the test prior to drilling out the casing shoe as per Onshore Order No. 2.

C. DRILLING MUD

Mud system monitoring equipment, with derrick floor indicators and visual and audio alarms, shall be operating before drilling into the Wolfcamp formation, and shall be used until production casing is run and cemented.

D. WASTE MATERIAL AND FLUIDS

All waste (i.e. drilling fluids, trash, salts, chemicals, sewage, gray water, etc.) created as a result of drilling operations and completion operations shall be safely contained and disposed of properly at a waste disposal facility. No waste material or fluid shall be disposed of on the well location or surrounding area.

Porto-johns and trash containers will be on-location during fracturing operations or any other crew-intensive operations.

NMK04122021



U.S. Department of the Interior
BUREAU OF LAND MANAGEMENT

Operator Certification Data Report

04/26/2021

Operator Certification

I hereby certify that I, or someone under my direct supervision, have inspected the drill site and access route proposed herein; that I am familiar with the conditions which currently exist; that I have full knowledge of state and Federal laws applicable to this operation; that the statements made in this APD package are, to the best of my knowledge, true and correct; and that the work associated with the operations proposed herein will be performed in conformity with this APD package and the terms and conditions under which it is approved. I also certify that I, or the company I represent, am responsible for the operations conducted under this application. These statements are subject to the provisions of 18 U.S.C. 1001 for the filing of false statements.

NAME: LESLIE REEVES

Signed on: 01/20/2021

Title: Advisor Regulatory

Street Address: 5 GREENWAY PLAZA, SUITE 110

City: HOUSTON

State: TX

Zip: 77046

Phone: (713)497-2492

Email address: LESLIE_REEVES@OXY.COM

Field Representative

Representative Name: JIM WILSON

Street Address: 6001 DEAUVILLE BLVD.

City: MIDLAND

State: TX

Zip: 79710

Phone: (575)631-2442

Email address: JIM_WILSON@OXY.COM



U.S. Department of the Interior
BUREAU OF LAND MANAGEMENT

Application Data Report

04/26/2021

APD ID: 10400060027

Submission Date: 08/07/2020

Highlighted data
reflects the most
recent changes

Operator Name: OXY USA INCORPORATED

Well Name: SAKER 6-7 FEDERAL COM

Well Number: 35H

[Show Final Text](#)

Well Type: OIL WELL

Well Work Type: Drill

Section 1 - General

APD ID: 10400060027

Tie to previous NOS? N

Submission Date: 08/07/2020

BLM Office: CARLSBAD

User: LESLIE REEVES

Title: Advisor Regulatory

Federal/Indian APD: FED

Is the first lease penetrated for production Federal or Indian? FED

Lease number: NMNM014164

Lease Acres:

Surface access agreement in place?

Allotted?

Reservation:

Agreement in place? NO

Federal or Indian agreement:

Agreement number:

Agreement name:

Keep application confidential? N

Permitting Agent? NO

APD Operator: OXY USA INCORPORATED

Operator letter of designation:

Operator Info

Operator Organization Name: OXY USA INCORPORATED

Operator Address: 5 Greenway Plaza, Suite 110

Zip: 77046

Operator PO Box:

Operator City: Houston

State: TX

Operator Phone: (713)366-5716

Operator Internet Address:

Section 2 - Well Information

Well in Master Development Plan? NO

Master Development Plan name:

Well in Master SUPO? NO

Master SUPO name:

Well in Master Drilling Plan? NO

Master Drilling Plan name:

Well Name: SAKER 6-7 FEDERAL COM

Well Number: 35H

Well API Number:

Field/Pool or Exploratory? Field and Pool

Field Name: OJO CHISO;
WOLFCAMP SOUTHWEST

Pool Name: OJO CHISO;
WOLFCAMP SOUTHWEST

Is the proposed well in an area containing other mineral resources? USEABLE WATER,NATURAL GAS,OIL

Operator Name: OXY USA INCORPORATED**Well Name:** SAKER 6-7 FEDERAL COM**Well Number:** 35H**Is the proposed well in an area containing other mineral resources?** USEABLE WATER,NATURAL GAS,OIL**Is the proposed well in a Helium production area?** N**Use Existing Well Pad?** N**New surface disturbance?****Type of Well Pad:** MULTIPLE WELL**Multiple Well Pad Name:**
SAKER 6-7 FEDERAL COM**Number:** 23H, 24H, 91H, 92H,
11H, 12H, 1H, 2H, 3H, 34H,
31H, 35H, 36H**Well Class:** HORIZONTAL**Number of Legs:** 1**Well Work Type:** Drill**Well Type:** OIL WELL**Describe Well Type:****Well sub-Type:** INFILL**Describe sub-type:****Distance to town:** 28.3 Miles**Distance to nearest well:** 35 FT**Distance to lease line:** 20 FT**Reservoir well spacing assigned acres Measurement:** 640.54 Acres**Well plat:** Saker6_7FedCom35H_SitePlan_20200807153044.pdf

Saker6_7FedCom35H_C102_10DayLtr_20210120102848.pdf

Well work start Date: 03/01/2021**Duration:** 45 DAYS**Section 3 - Well Location Table****Survey Type:** RECTANGULAR**Describe Survey Type:****Datum:** NAD83**Vertical Datum:** NAVD88**Survey number:****Reference Datum:** GROUND LEVEL

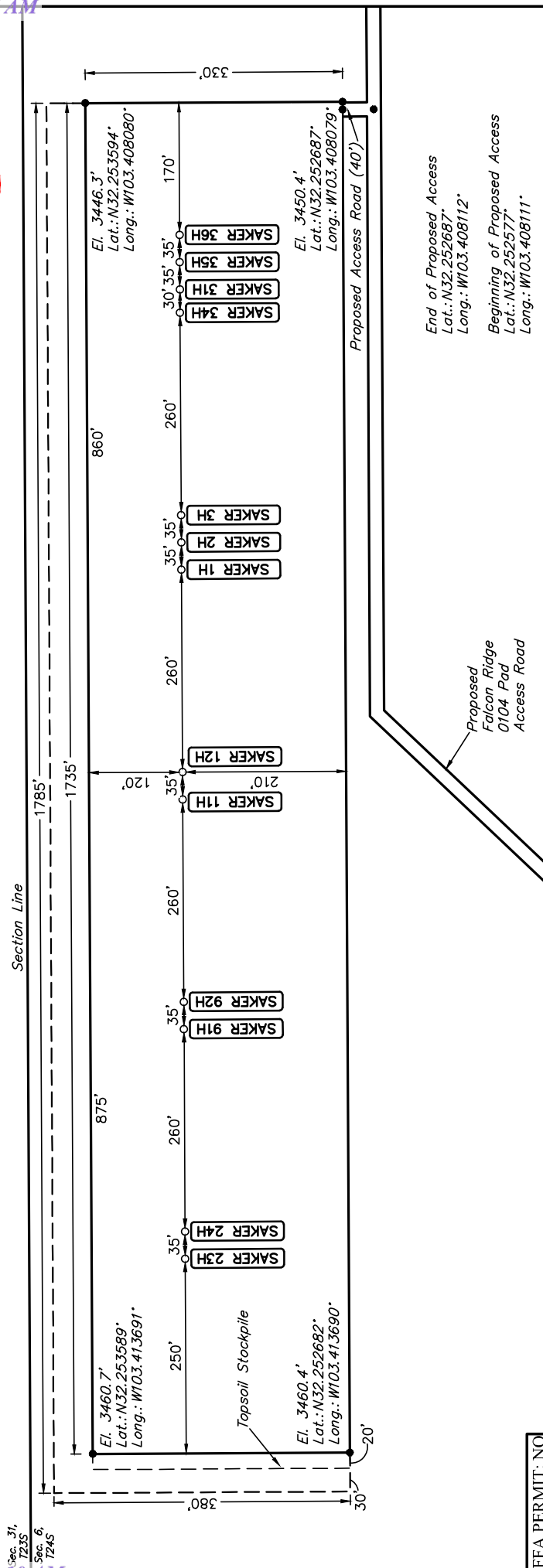
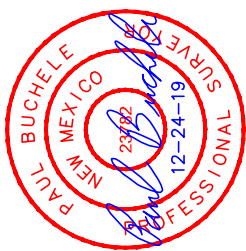
Wellbore	NS-Foot	NS Indicator	EW-Foot	EW Indicator	Twsp	Range	Section	Aliquot/Lot/Tract	Latitude	Longitude	County	State	Meridian	Lease Type	Lease Number	Elevation	MD	TVD	Will this well produce from this lease?
SHL Leg #1	200	FNL	1995	FWL	24S	35E	6	Lot 3	32.253263	-103.408742	LEA	NEW MEXICO	NEW MEXICO	F	NMNM 14164	3450	0	0	N
KOP Leg #1	50	FNL	1330	FWL	24S	35E	6	Lot 3	32.253673	-103.410893	LEA	NEW MEXICO	NEW MEXICO	F	NMNM 14164	-7551	11026	11001	N

Operator Name: OXY USA INCORPORATED

Well Name: SAKER 6-7 FEDERAL COM

Well Number: 35H

Wellbore	NS-Foot	NS Indicator	EW-Foot	EW Indicator	Twsp	Range	Section	Aliquot/Lot/Tract	Latitude	Longitude	County	State	Meridian	Lease Type	Lease Number	Elevation	MD	TVD	Will this well produce from this lease?
PPP Leg #1-1	100	FNL	1330	FWL	24S	35E	6	Lot 3	32.253536	-103.410892	LEA	NEW MEXICO	NEW MEXICO	F	NMNM 14164	-8165	11949	11615	Y
EXIT Leg #1	100	FSL	1330	FWL	24S	35E	7	Aliquot SESW	32.225058	-103.410872	LEA	NEW MEXICO	NEW MEXICO	F	NMNM 14164	-8614	21824	12064	Y
BHL Leg #1	20	FSL	1330	FWL	24S	35E	7	Aliquot SESW	32.224838	-103.410872	LEA	NEW MEXICO	NEW MEXICO	F	NMNM 14164	-8618	21904	12068	N



FFA PERMIT: NO

NOTES:

- Basis of Bearings is a Transverse Mercator Projection with a Central Meridian of W103°53'00" (NAD 83).
- Latitude and Longitude Coordinates are NAD 83.

OXY USA INC.

**FALCON RIDGE 0602 PAD
LOTS 3 & 4, SECTION 6, T24S, R35E, N.M.P.M.
LEA COUNTY, NEW MEXICO**

SURVEYED BY	C.H., D.C.	12-13-19	SCALE
DRAWN BY	R.J.	12-24-19	1" = 150'

SITE PLAN

UELS, LLC
Corporate Office * 85 South 200 East
Vernal, UT 84078 * (435) 789-1017





U.S. Department of the Interior
BUREAU OF LAND MANAGEMENT

Drilling Plan Data Report

04/26/2021

APD ID: 10400060027

Submission Date: 08/07/2020

Highlighted data
reflects the most
recent changes

Operator Name: OXY USA INCORPORATED

Well Name: SAKER 6-7 FEDERAL COM

Well Number: 35H

[Show Final Text](#)

Well Type: OIL WELL

Well Work Type: Drill

Section 1 - Geologic Formations

Formation ID	Formation Name	Elevation	True Vertical Depth	Measured Depth	Lithologies	Mineral Resources	Producing Formation
812165	RUSTLER	3449	848	848	ANHYDRITE, DOLOMITE, SHALE	USEABLE WATER	N
812166	SALADO	2392	1057	1057	ANHYDRITE, DOLOMITE, HALITE, SHALE	OTHER : SALT	Y
812174	CASTILE	56	3393	3393	ANHYDRITE	OTHER : SALT	N
812167	DELAWARE	-1783	5232	5232	LIMESTONE, SANDSTONE, SILTSTONE	NATURAL GAS, OIL, OTHER : BRINE	N
812175	BELL CANYON	-1834	5283	5283	SANDSTONE, SILTSTONE	NATURAL GAS, OIL, OTHER : BRINE	N
812176	CHERRY CANYON	-2716	6165	6165	SANDSTONE, SILTSTONE	NATURAL GAS, OIL, OTHER : BRINE	N
812177	BRUSHY CANYON	-4080	7529	7529	SANDSTONE, SILTSTONE	NONE	Y
812164	BONE SPRING	-5278	8727	8727	LIMESTONE, SANDSTONE, SILTSTONE	NATURAL GAS, OIL	Y
812163	BONE SPRING 1ST	-6376	9825	9832	LIMESTONE, SANDSTONE, SILTSTONE	NATURAL GAS, OIL	Y
812162	BONE SPRING 2ND	-6834	10283	10297	LIMESTONE, SANDSTONE, SILTSTONE	NATURAL GAS, OIL	Y
812171	BONE SPRING 3RD	-7839	11288	11325	LIMESTONE, SANDSTONE, SILTSTONE	NATURAL GAS, OIL	Y
812159	WOLFCAMP	-8088	11537	11672	SANDSTONE, SILTSTONE	NATURAL GAS, OIL	Y

Section 2 - Blowout Prevention

Pressure Rating (PSI): 5M

Rating Depth: 12068

Equipment: 13-5/8" 5M Annular, Blind Ram, Double Ram

Requesting Variance? YES

Variance request: Request for the use of a flexible choke line from the BOP to Choke Manifold.

Testing Procedure: OXY will utilize a 5M annular with a 10M BOPE stack. BOP/BOPE will be tested by an independent service company to 250 psi low and the high pressure indicated above per Onshore Order 2 requirements. The System may be upgraded to a higher pressure but still tested to the working pressure listed in the table above. If the system is upgraded

Operator Name: OXY USA INCORPORATED**Well Name:** SAKER 6-7 FEDERAL COM**Well Number:** 35H

all the components installed will be functional and tested. Pipe rams will be operationally checked each 24 hour period. Blind rams will be operationally checked on each trip out of the hole. These checks will be noted on the daily tour sheets. Other accessories to the BOP equipment will include a Kelly cock and floor safety valve (inside BOP) and choke lines and choke manifold. A multibowl or a unionized multibowl wellhead system will be employed. The wellhead and connection to the BOPE will meet all API 6A requirements. The BOP will be tested per Onshore Order #2 after installation on the surface casing which will cover testing requirements for a maximum of 30 days. If any seal subject to test pressure is broken the system must be tested. We will test the flange connection of the wellhead with a test port that is directly in the flange. We are proposing that we will run the wellhead through the rotary prior to cementing surface casing as discussed with the BLM on October 8, 2015. BOP Break Testing Request Oxy requests permission to adjust the BOP break testing requirements as per the agreement reached in the OXY/BLM meeting on September 5, 2019. A separate sundry will be sent prior to spud that reflects the pad based break testing plan. BOP break test under the following conditions: After a full BOP test is conducted - When skidding to drill an intermediate section where ICP is set into the third Bone Spring or shallower. - When skidding to drill a production section that does not penetrate into the third Bone Spring or deeper. If the kill line is broken prior to skid, two tests will be performed. 1) Wellhead flange, co-flex hose, kill line connections and upper pipe rams 2) Wellhead flange, HCR valve, check valve, upper pipe rams If the kill line is not broken prior to skid, only one test will be performed. 1) Wellhead flange, co-flex hose, check valve, upper pipe rams

Choke Diagram Attachment:

Saker6_7FedCom35H_ChokeManifold_20200807154413.pdf

BOP Diagram Attachment:

Saker6_7FedCom35H_BOP_20200807154424.PDF

Saker6_7FedCom35H_FlexHoseCert_20200807154448.pdf

Saker6_7FedCom35H_WellControlPlan_20200807154458.pdf

Section 3 - Casing

Casing ID	String Type	Hole Size	Csg Size	Condition	Standard	Tapered String	Top Set MD	Bottom Set MD	Top Set TVD	Bottom Set TVD	Top Set MSL	Bottom Set MSL	Calculated casing length MD	Grade	Weight	Joint Type	Collapse SF	Burst SF	Joint SF Type	Joint SF	Body SF Type	Body SF
1	SURFACE	14.75	10.75	NEW	API	N	0	997	0	997	3450	2453	997	J-55	40.5	BUTT	1.125	1.2	BUOY	1.4	BUOY	1.4
2	INTERMEDIATE	9.875	7.625	NEW	API	N	0	10926	0	10902		-7452	10926	HCL-80	26.4	BUTT	1.125	1.2	BUOY	1.4	BUOY	1.4
3	PRODUCTION	6.75	5.5	NEW	API	N	0	21903	0	12068		-8618	21903	P-110	20	OTHER - DQX/DQW/SFTORQ	1.125	1.2	BUOY	1.4	BUOY	1.4

Casing Attachments

Operator Name: OXY USA INCORPORATED**Well Name:** SAKER 6-7 FEDERAL COM**Well Number:** 35H**Casing Attachments**

Casing ID: 1 **String Type:** SURFACE**Inspection Document:****Spec Document:****Tapered String Spec:****Casing Design Assumptions and Worksheet(s):**

Saker6_7FedCom35H_CsgCriteria_20200807192955.pdf

Casing ID: 2 **String Type:** INTERMEDIATE**Inspection Document:****Spec Document:****Tapered String Spec:****Casing Design Assumptions and Worksheet(s):**

Saker6_7FedCom35H_CsgCriteria_20200807193057.pdf

Casing ID: 3 **String Type:** PRODUCTION**Inspection Document:****Spec Document:****Tapered String Spec:****Casing Design Assumptions and Worksheet(s):**

Saker6_7FedCom35H_CsgCriteria_20200807193128.pdf

Saker6_7FedCom35H_TMK_UP_DQW_TORQ_5.500in_x_20_20200807193135.00

Saker6_7FedCom35H_TMK_UP_DQX_5.500in_x_20_20200807193144.00

Operator Name: OXY USA INCORPORATED**Well Name:** SAKER 6-7 FEDERAL COM**Well Number:** 35H**Section 4 - Cement**

String Type	Lead/Tail	Stage Tool Depth	Top MD	Bottom MD	Quantity(sx)	Yield	Density	Cu Ft	Excess%	Cement type	Additives
SURFACE	Lead		0	997	821	1.33	14.8	1092	100	Class C Cement	Accelerator

INTERMEDIATE	Lead	2	0	7779	957	1.92	12.9	1837	10	Class C	Accelerator
--------------	------	---	---	------	-----	------	------	------	----	---------	-------------

INTERMEDIATE	Lead	2	7779	1092 6	437	1.65	13.2	721	5	Class H	Retarder, Dispersant, Salt
--------------	------	---	------	-----------	-----	------	------	-----	---	---------	----------------------------

PRODUCTION	Lead		1042 6	2190 3	842	1.38	13.2	1162	20	Class H Cement	Retarder, Dispersant, Salt
------------	------	--	-----------	-----------	-----	------	------	------	----	----------------	----------------------------

Section 5 - Circulating Medium**Mud System Type:** Closed**Will an air or gas system be Used?** NO**Description of the equipment for the circulating system in accordance with Onshore Order #2:****Diagram of the equipment for the circulating system in accordance with Onshore Order #2:**

Describe what will be on location to control well or mitigate other conditions: Sufficient mud materials to maintain mud properties and meet minimum lost circulation and weight increase requirements. The following is a general list of products: Barite, Bentonite, Gypsum, Lime, Soda Ash, Caustic Soda, Nut Plug, Cedar Fiber, Cotton Seed Hulls, Drilling Paper, Salt Water Clay, CaCl₂.

Describe the mud monitoring system utilized: PVT/MD Totco/Visual Monitoring**Circulating Medium Table**

Operator Name: OXY USA INCORPORATED**Well Name:** SAKER 6-7 FEDERAL COM**Well Number:** 35H

Top Depth	Bottom Depth	Mud Type	Min Weight (lbs/gal)	Max Weight (lbs/gal)	Density (lbs/cu ft)	Gel Strength (lbs/100 sqft)	PH	Viscosity (CP)	Salinity (ppm)	Filtration (cc)	Additional Characteristics
997	1092 6	OTHER : Saturated Brine- Based Mud or Oil-Based Mud	8	10							
0	997	WATER-BASED MUD	8.6	8.8							
1092 6	2190 3	OTHER : Water- Based Mud and/or Oil-Based Mud	9.5	12							

Section 6 - Test, Logging, Coring

List of production tests including testing procedures, equipment and safety measures:

GR from TD to surface (horizontal well vertical portion of hole). Mud Log from Intermediate casing shoe to TD.

List of open and cased hole logs run in the well:

GAMMA RAY LOG,MUD LOG/GEOLOGIC LITHOLOGY LOG,MUD LOG/GEOLOGICAL LITHOLOGY LOG,DIRECTIONAL SURVEY,

Coring operation description for the well:

No coring is planned at this time.

Section 7 - Pressure

Anticipated Bottom Hole Pressure: 7531

Anticipated Surface Pressure: 4876

Anticipated Bottom Hole Temperature(F): 177

Anticipated abnormal pressures, temperatures, or potential geologic hazards? NO

Describe:

Contingency Plans geohazards description:

Contingency Plans geohazards attachment:

Hydrogen Sulfide drilling operations plan required? YES

Hydrogen sulfide drilling operations plan:

Saker6_7FedCom35H_H2S1_20200807193637.pdf

Saker6_7FedCom35H_H2S2_20200807193644.pdf

Operator Name: OXY USA INCORPORATED

Well Name: SAKER 6-7 FEDERAL COM

Well Number: 35H

Saker6_7FedCom35H_H2SEmerCont_20200807193652.pdf

Section 8 - Other Information

Proposed horizontal/directional/multi-lateral plan submission:

Saker6_7FedCom35H_DirectPlan_20200807193713.pdf

Saker6_7FedCom35H_DirectPlot_20200807193720.pdf

Other proposed operations facets description:

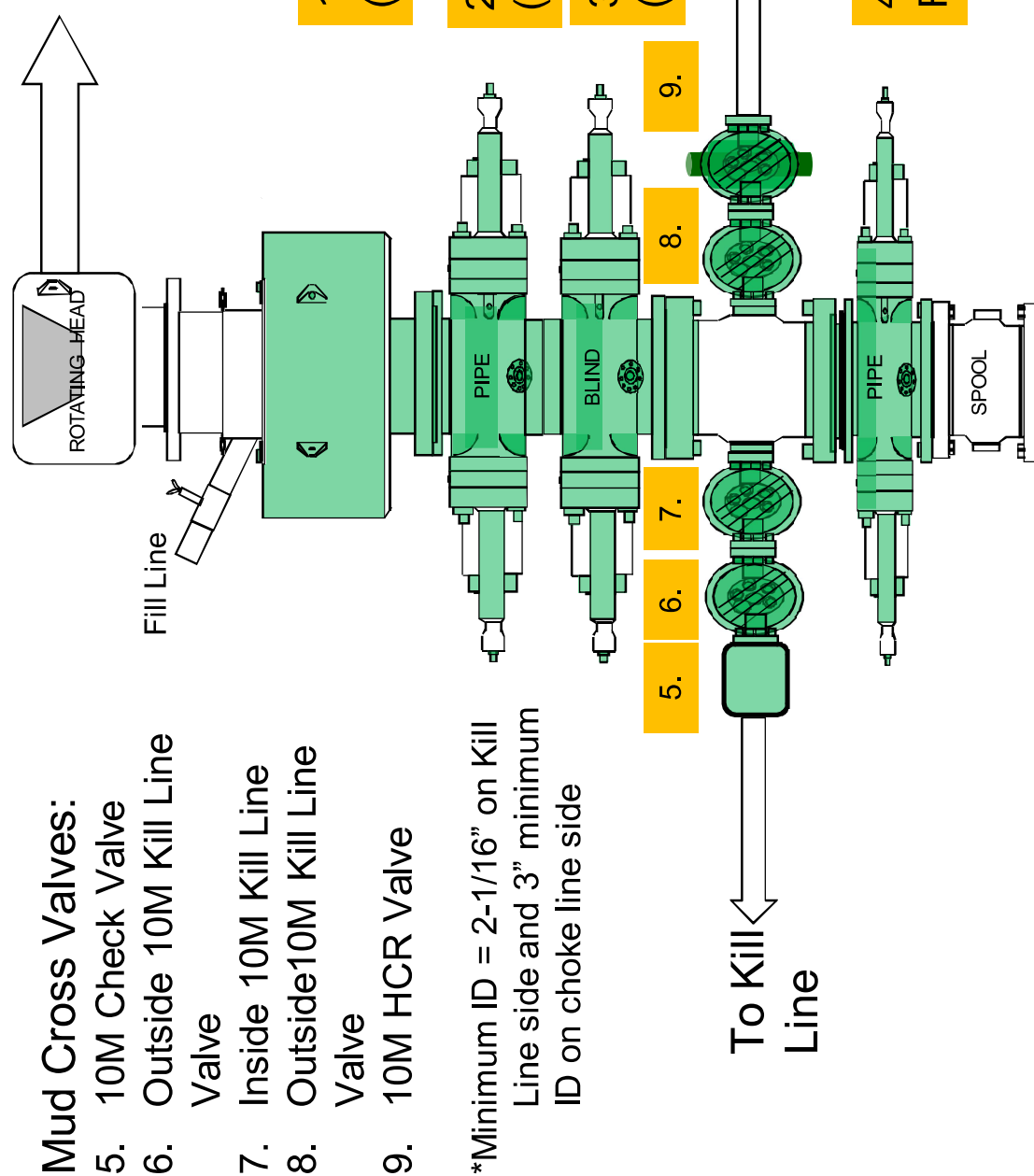
Other proposed operations facets attachment:

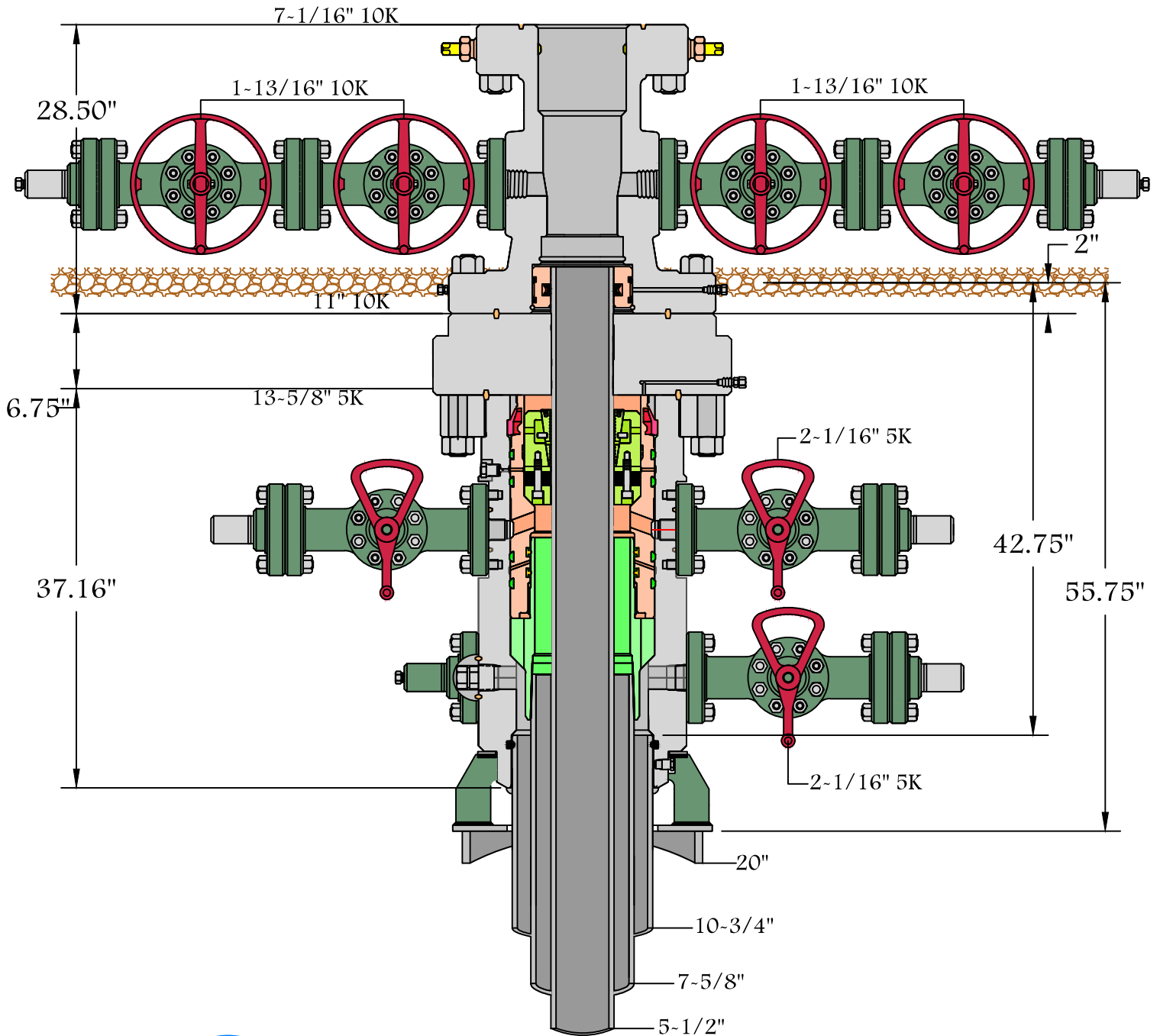
Saker6_7FedCom35H_SpudRigData_20200807193727.pdf

Saker6_7FedCom35H_DrillPlan_20200807193733.pdf

Other Variance attachment:

5/10M BOP Stack





13-5/8" 5K MN-DS



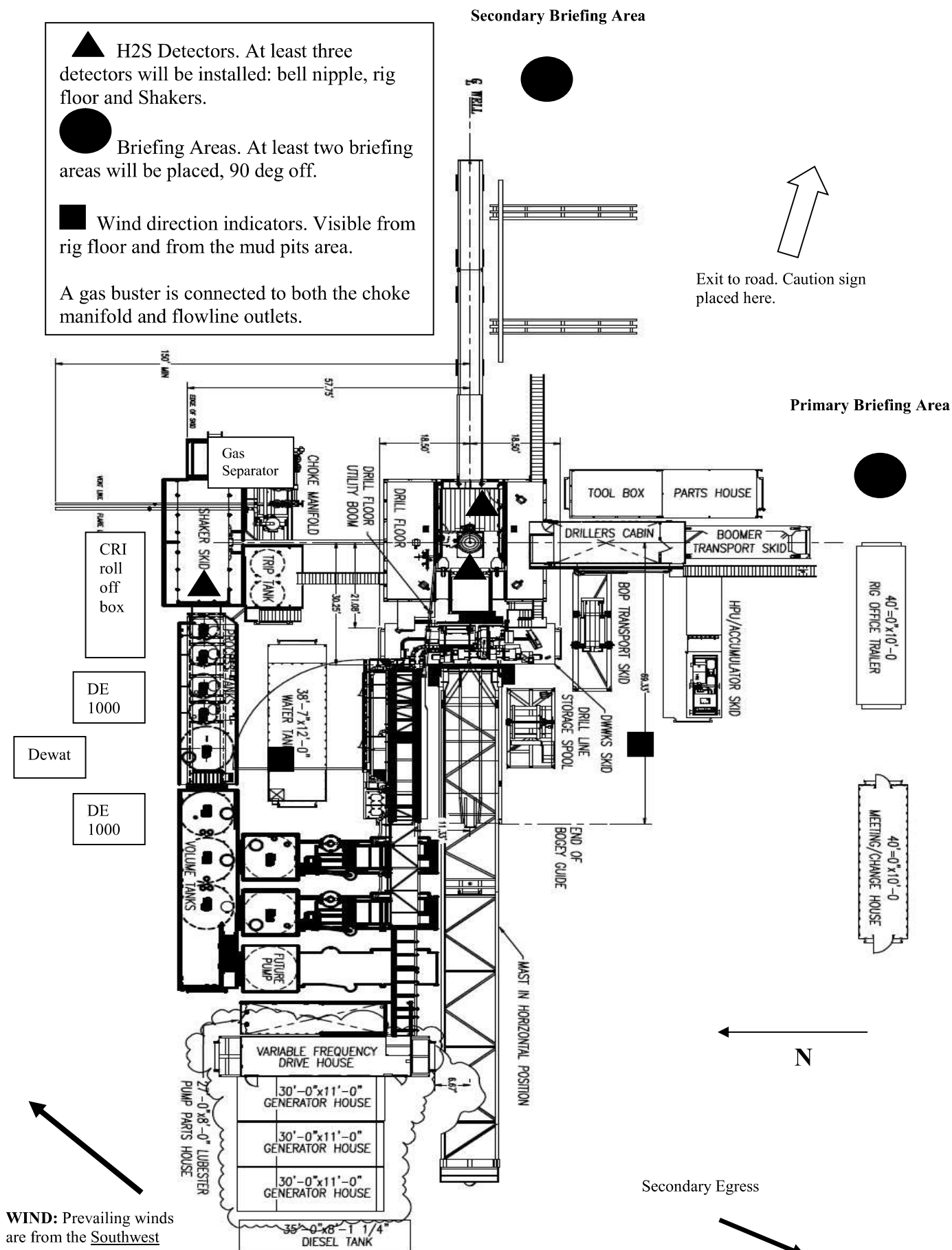


Permian Drilling Hydrogen Sulfide Drilling Operations Plan Saker 6_7 Fed Com 35H

Open drill site. No homes or buildings are near the proposed location.

1. Escape

Personnel shall escape upwind of wellbore in the event of an emergency gas release. Escape can take place through the lease road on the Southeast side of the location. Personnel need to move to a safe distance and block the entrance to location. If the primary route is not an option due to the wind direction, then a secondary egress route should be taken.





Permian Drilling Hydrogen Sulfide Drilling Operations Plan New Mexico

Scope

This contingency plan establishes guidelines for the public, all company employees, and contract employees who's work activities may involve exposure to hydrogen sulfide (H₂S) gas.

While drilling this well, it is possible to encounter H₂S bearing formations. At all times, the first barrier to control H₂S emissions will be the drilling fluid, which will have a density high enough to control influx.

Objective

1. Provide an immediate and predetermined response plan to any condition when H₂S is detected. All H₂S detections in excess of 10 parts per million (ppm) concentration are considered an Emergency.
2. Prevent any and all accidents, and prevent the uncontrolled release of hydrogen sulfide into the atmosphere.
3. Provide proper evacuation procedures to cope with emergencies.
4. Provide immediate and adequate medical attention should an injury occur.

Discussion

Implementation:	This plan with all details is to be fully implemented before drilling to <u>commence</u> .
Emergency response Procedure:	This section outlines the conditions and denotes steps to be taken in the event of an emergency.
Emergency equipment Procedure:	This section outlines the safety and emergency equipment that will be required for the drilling of this well.
Training provisions:	This section outlines the training provisions that must be adhered to prior to drilling.
Drilling emergency call lists:	Included are the telephone numbers of all persons to be contacted should an emergency exist.
Briefing:	This section deals with the briefing of all people involved in the drilling operation.
Public safety:	Public safety personnel will be made aware of any potential evacuation and any additional support needed.
Check lists:	Status check lists and procedural check lists have been included to insure adherence to the plan.
General information:	A general information section has been included to supply support information.

Hydrogen Sulfide Training

All personnel, whether regularly assigned, contracted, or employed on an unscheduled basis, will receive training from a qualified instructor in the following areas prior to commencing drilling operations on the well:

1. The hazards and characteristics of H₂S.
2. Proper use and maintenance of personal protective equipment and life support systems.
3. H₂S detection.
4. Proper use of H₂S detectors, alarms, warning systems, briefing areas, evacuation procedures and prevailing winds.
5. Proper techniques for first aid and rescue procedures.
6. Physical effects of hydrogen sulfide on the human body.
7. Toxicity of hydrogen sulfide and sulfur dioxide.
8. Use of SCBA and supplied air equipment.
9. First aid and artificial respiration.
10. Emergency rescue.

In addition, supervisory personnel will be trained in the following areas:

1. The effects of H₂S on metal components. If high tensile strength tubular is to be used, personnel will be trained in their special maintenance requirements.
2. Corrective action and shut-in procedures when drilling a well, blowout prevention and well control procedures.
3. The contents and requirements of the H₂S Drilling Operations Plan.

H₂S training refresher must have been taken within one year prior to drilling the well. Specifics on the well to be drilled will be discussed during the pre-spud meeting. H₂S and well control (choke) drills will be performed while drilling the well, at least on a weekly basis. This plan shall be available in the well site. All personnel will be required to carry the documentation proving that the H₂S training has been taken.

Service company and visiting personnel

- A. Each service company that will be on this well will be notified if the zone contains H₂S.
- B. Each service company must provide for the training and equipment of their employees before they arrive at the well site.
- C. Each service company will be expected to attend a well site briefing

Emergency Equipment Requirements

1. Well control equipment

The well shall have hydraulic BOP equipment for the anticipated pressures. Equipment is to be tested on installation and follow Oxy Well Control standard, as well as BLM Onshore Order #2.

Special control equipment:

- A. Hydraulic BOP equipment with remote control on ground. Remotely operated choke.
- B. Rotating head
- C. Gas buster equipment shall be installed before drilling out of surface pipe.

2. Protective equipment for personnel

- A. Four (4) 30-minute positive pressure air packs (2 at each briefing area) on location.
- B. Adequate fire extinguishers shall be located at strategic locations.
- C. Radio / cell telephone communication will be available at the rig.
 - Rig floor and trailers.
 - Vehicle.

3. Hydrogen sulfide sensors and alarms

- A. H₂S sensor with alarms will be located on the rig floor, at the bell nipple, and at the flow line. These monitors will be set to alarm at 10 ppm with strobe light, and audible alarm.
- B. Hand operated detectors with tubes.
- C. H₂S monitor tester (to be provided by contract Safety Company.)
- D. There shall be one combustible gas detector on location at all times.

4. Visual Warning Systems

- A. One sign located at each location entrance with the following language:

**Caution – potential poison gas
Hydrogen sulfide
No admittance without authorization**

Wind sock – wind streamers:

- A. One 36" (in length) wind sock located at protection center, at height visible from rig floor.
- B. One 36" (in length) wind sock located at height visible from pit areas.

Condition flags

- A. One each condition flag to be displayed to denote conditions.

green – normal conditions
yellow – potential danger
red – danger, H2S present

- B. Condition flag shall be posted at each location sign entrance.

5. Mud Program

The mud program is designed to minimize the risk of having H2S and other formation fluids at surface. Proper mud weight and safe drilling practices will be applied. H2S scavengers will be used to minimize the hazards while drilling. Below is a summary of the drilling program.

Mud inspection devices:

Garrett gas train or hatch tester for inspection of sulfide concentration in mud system.

6. Metallurgy

- A. Drill string, casing, tubing, wellhead, blowout preventers, drilling spools or adapters, kill lines, choke manifold, lines and valves shall be suitable for the H2S service.
- B. All the elastomers, packing, seals and ring gaskets shall be suitable for H2S service.

7. Well Testing

No drill stem test will be performed on this well.

8. Evacuation plan

Evacuation routes should be established prior to well spud for each well and discussed with all rig personnel.

9. Designated area

- A. Parking and visitor area: all vehicles are to be parked at a predetermined safe distance from the wellhead.
- B. There will be a designated smoking area.
- C. Two briefing areas on either side of the location at the maximum allowable distance from the well bore so they offset prevailing winds perpendicularly, or at a 45-degree angle if wind direction tends to shift in the area.

Emergency procedures

- A. In the event of any evidence of H₂S level above 10 ppm, take the following steps:
 - 1. The Driller will pick up off bottom, shut down the pumps, slow down the pipe rotation.
 - 2. Secure and don escape breathing equipment, report to the upwind designated safe briefing / muster area.
 - 3. All personnel on location will be accounted for and emergency search should begin for any missing, the Buddy System will be implemented.
 - 4. Order non-essential personnel to leave the well site, order all essential personnel out of the danger zone and upwind to the nearest designated safe briefing / muster area.
 - 5. Entrance to the location will be secured to a higher level than our usual "Meet and Greet" requirement, and the proper condition flag will be displayed at the entrance to the location.
 - 6. Take steps to determine if the H₂S level can be corrected or suppressed and, if so, proceed as required.
- B. If uncontrollable conditions occur:
 - 1. Take steps to protect and/or remove any public in the down-wind area from the rig – partial evacuation and isolation. Notify necessary public safety personnel and appropriate regulatory entities (i.e. BLM) of the situation.

2. Remove all personnel to the nearest upwind designated safe briefing / muster area or off location.
3. Notify public safety personnel of safe briefing / muster area.
4. An assigned crew member will blockade the entrance to the location. No unauthorized personnel will be allowed entry to the location.
5. Proceed with best plan (at the time) to regain control of the well. Maintain tight security and safety procedures.

C. Responsibility:

1. Designated personnel.
 - a. Shall be responsible for the total implementation of this plan.
 - b. Shall be in complete command during any emergency.
 - c. Shall designate a back-up.

- | | |
|---------------------|--|
| All personnel: | <ol style="list-style-type: none"> 1. On alarm, don escape unit and report to the nearest upwind designated safe briefing / muster area upw 2. Check status of personnel (buddy system). 3. Secure breathing equipment. 4. Await orders from supervisor. |
| Drill site manager: | <ol style="list-style-type: none"> 1. Don escape unit if necessary and report to nearest upwind designated safe briefing / muster area. 2. Coordinate preparations of individuals to return to point of release with tool pusher and driller (using the buddy system). 3. Determine H2S concentrations. 4. Assess situation and take control measures. |
| Tool pusher: | <ol style="list-style-type: none"> 1. Don escape unit Report to up nearest upwind designated safe briefing / muster area. 2. Coordinate preparation of individuals to return to point of release with tool pusher drill site manager (using the buddy system). 3. Determine H2S concentration. 4. Assess situation and take control measures. |
| Driller: | <ol style="list-style-type: none"> 1. Don escape unit, shut down pumps, continue |

- rotating DP.
 - 2. Check monitor for point of release.
 - 3. Report to nearest upwind designated safe briefing / muster area.
 - 4. Check status of personnel (in an attempt to rescue, use the buddy system).
 - 5. Assigns least essential person to notify Drill Site Manager and tool pusher by quickest means in case of their absence.
 - 6. Assumes the responsibilities of the Drill Site Manager and tool pusher until they arrive should they be absent.
- Derrick man
- Floor man #1
- Floor man #2
- Mud engineer:
- 1. Will remain in briefing / muster area until instructed by supervisor.
- 1. Report to nearest upwind designated safe briefing / muster area.
 - 2. When instructed, begin check of mud for ph and H2S level. (Garett gas train.)
- Safety personnel:
- 1. Mask up and check status of all personnel and secure operations as instructed by drill site manager.

Taking a kick

When taking a kick during an H2S emergency, all personnel will follow standard Well control procedures after reporting to briefing area and masking up.

Open-hole logging

All unnecessary personnel off floor. Drill Site Manager and safety personnel should monitor condition, advise status and determine need for use of air equipment.

Running casing or plugging

Following the same “tripping” procedure as above. Drill Site Manager and safety personnel should determine if all personnel have access to protective equipment.

Ignition procedures

The decision to ignite the well is the responsibility of the operator (Oxy Drilling Management). The decision should be made only as a last resort and in a situation where it is clear that:

1. Human life and property are endangered.
2. There is no hope controlling the blowout under the prevailing conditions at the well.

Instructions for igniting the well

1. Two people are required for the actual igniting operation. They must wear self-contained breathing units and have a safety rope attached. One man (tool pusher or safety engineer) will check the atmosphere for explosive gases with the gas monitor. The other man is responsible for igniting the well.
2. Primary method to ignite: 25 mm flare gun with range of approximately 500 feet.
3. Ignite upwind and do not approach any closer than is warranted.
4. Select the ignition site best for protection, and which offers an easy escape route.
5. Before firing, check for presence of combustible gas.
6. After lighting, continue emergency action and procedure as before.
7. All unassigned personnel will remain in briefing area until instructed by supervisor or directed by the Drill Site Manager.

Remember: After well is ignited, burning hydrogen sulfide will convert to sulfur dioxide, which is also highly toxic. **Do not assume the area is safe after the well is ignited.**

Status check list

Note: All items on this list must be completed before drilling to production casing point.

1. H2S sign at location entrance.
2. Two (2) wind socks located as required.
3. Four (4) 30-minute positive pressure air packs (2 at each Briefing area) on location for all rig personnel and mud loggers.
4. Air packs inspected and ready for use.
5. Cascade system and hose line hook-up as needed.
6. Cascade system for refilling air bottles as needed.
7. Condition flag on location and ready for use.
8. H2S detection system hooked up and tested.
9. H2S alarm system hooked up and tested.
10. Hand operated H2S detector with tubes on location.
11. 1 – 100' length of nylon rope on location.
12. All rig crew and supervisors trained as required.
13. All outside service contractors advised of potential H2S hazard on well.
14. No smoking sign posted and a designated smoking area identified.
15. Calibration of all H2S equipment shall be noted on the IADC report.

Checked by: _____ Date: _____

Procedural check list during H2S events

Perform each tour:

1. Check fire extinguishers to see that they have the proper charge.
2. Check breathing equipment to ensure that it in proper working order.
3. Make sure all the H2S detection system is operative.

Perform each week:

1. Check each piece of breathing equipment to make sure that demand or forced air regulator is working. This requires that the bottle be opened and the mask assembly be put on tight enough so that when you inhale, you receive air or feel air flow.
2. BOP skills (well control drills).
3. Check supply pressure on BOP accumulator stand by source.
4. Check breathing equipment mask assembly to see that straps are loosened and turned back, ready to put on.
5. Check pressure on breathing equipment air bottles to make sure they are charged to full volume. (Air quality checked for proper air grade “D” before bringing to location)
6. Confirm pressure on all supply air bottles.
7. Perform breathing equipment drills with on-site personnel.
8. Check the following supplies for availability.
 - A. Emergency telephone list.
 - B. Hand operated H2S detectors and tubes.

General evacuation plan

1. When the company approved supervisor (Drill Site Manager, consultant, rig pusher, or driller) determines the H2S gas cannot be limited to the well location and the public will be involved, he will activate the evacuation plan.
2. Drill Site Manager or designee will notify local government agency that a hazardous condition exists and evacuation needs to be implemented.
3. Company or contractor safety personnel that have been trained in the use of H2S detection equipment and self-contained breathing equipment will monitor H2S concentrations, wind directions, and area of exposure. They will delineate the outer perimeter of the hazardous gas area. Extension to the evacuation area will be determined from information gathered.
4. Law enforcement personnel (state police, police dept., fire dept., and sheriff's dept.) Will be called to aid in setting up and maintaining road blocks. Also, they will aid in evacuation of the public if necessary.
5. After the discharge of gas has been controlled, company safety personnel will determine when the area is safe for re-entry.

Important: Law enforcement personnel will not be asked to come into a contaminated area. Their assistance will be limited to uncontaminated areas. Constant radio contact will be maintained with them.

Emergency actions

Well blowout – if emergency

1. Evacuate all personnel to “Safe Briefing / Muster Areas” or off location if needed.
2. If sour gas – evacuate rig personnel.
3. If sour gas – evacuate public within 3000 ft radius of exposure.
4. Don SCBA and shut well in if possible using the buddy system.
5. Notify Drilling Superintendent and call 911 for emergency help (fire dept and ambulance) if needed.
6. Implement the Blowout Contingency Plan, and Drilling Emergency Action Plan.
6. Give first aid as needed.

Person down location/facility

1. If immediately possible, contact 911. Give location and wait for confirmation.
2. Don SCBA and perform rescue operation using buddy system.

Toxic effects of hydrogen sulfide

Hydrogen sulfide is extremely toxic. The acceptable ceiling concentration for eight-hour exposure is 10 ppm, which is .001% by volume. Hydrogen sulfide is heavier than air (specific gravity – 1.192) and colorless. It forms an explosive mixture with air between 4.3 and 46.0 percent by volume. Hydrogen sulfide is almost as toxic as hydrogen cyanide and is between five and six times more toxic than carbon monoxide. Toxicity data for hydrogen sulfide and various other gases are compared in table i. Physical effects at various hydrogen sulfide exposure levels are shown in table ii.

Table i
Toxicity of various gases

Common name	Chemical formula	Specific gravity (sc=1)	Threshold limit (1)	Hazardous limit (2)	Lethal concentration (3)
Hydrogen Cyanide	Hcn	0.94	10 ppm	150 ppm/hr	300 ppm
Hydrogen Sulfide	H2S	1.18	10 ppm	250 ppm/hr	600 ppm
Sulfur Dioxide	So2	2.21	5 ppm	-	1000 ppm
Chlorine	Cl2	2.45	1 ppm	4 ppm/hr	1000 ppm
Carbon Monoxide	Co	0.97	50 ppm	400 ppm/hr	1000 ppm
Carbon Dioxide	Co2	1.52	5000 ppm	5%	10%
Methane	Ch4	0.55	90,000 ppm	Combustible above 5% in air	

- 1) threshold limit – concentration at which it is believed that all workers may be repeatedly exposed day after day without adverse effects.
- 2) hazardous limit – concentration that will cause death with short-term exposure.
- 3) lethal concentration – concentration that will cause death with short-term exposure.

Toxic effects of hydrogen sulfide

Table ii
Physical effects of hydrogen sulfide

<u>Percent (%)</u>	<u>Ppm</u>	<u>Concentration</u> Grains <u>100 std. Ft3*</u>	<u>Physical effects</u>
0.001	<10	00.65	Obvious and unpleasant odor.

0.002	10	01.30	Safe for 8 hours of exposure.
0.010	100	06.48	Kill smell in 3 – 15 minutes. May sting eyes and throat.
0.020	200	12.96	Kills smell shortly; stings eyes and throat.
0.050	500	32.96	Dizziness; breathing ceases in a few minutes; needs prompt artificial respiration.
0.070	700	45.36	Unconscious quickly; death will result if not rescued promptly.
0.100	1000	64.30	Unconscious at once; followed by death within minutes.

*at 15.00 psia and 60'f.

Use of self-contained breathing equipment (SCBA)

1. Written procedures shall be prepared covering safe use of SCBA's in dangerous atmosphere, which might be encountered in normal operations or in emergencies. Personnel shall be familiar with these procedures and the available SCBA.
2. SCBA's shall be inspected frequently at random to insure that they are properly used, cleaned, and maintained.
3. Anyone who may use the SCBA's shall be trained in how to insure proper face-piece to face seal. They shall wear SCBA's in normal air and then wear them in a test atmosphere. (note: such items as facial hair {beard or sideburns} and eyeglasses will not allow proper seal.) Anyone that may be reasonably expected to wear SCBA's should have these items removed before entering a toxic atmosphere. A special mask must be obtained for anyone who must wear eyeglasses or contact lenses.
4. Maintenance and care of SCBA's:
 - a. A program for maintenance and care of SCBA's shall include the following:
 1. Inspection for defects, including leak checks.
 2. Cleaning and disinfecting.
 3. Repair.
 4. Storage.
 - b. Inspection, self-contained breathing apparatus for emergency use shall be inspected monthly.
 1. Fully charged cylinders.
 2. Regulator and warning device operation.
 3. Condition of face piece and connections.
 4. Rubber parts shall be maintained to keep them pliable and prevent deterioration.
 - c. Routinely used SCBA's shall be collected, cleaned and disinfected as frequently as necessary to insure proper protection is provided.
5. Persons assigned tasks that requires use of self-contained breathing equipment shall be certified physically fit (medically cleared) for breathing equipment usage at least annually.
6. SCBA's should be worn when:
 - A. Any employee works near the top or on top of any tank unless test reveals less than 10 ppm of H₂S.

- B. When breaking out any line where H₂S can reasonably be expected.
- C. When sampling air in areas to determine if toxic concentrations of H₂S exists.
- D. When working in areas where over 10 ppm H₂S has been detected.
- E. At any time there is a doubt as to the H₂S level in the area to be entered.

Rescue
First aid for H₂S poisoning

Do not panic!

Remain calm – think!

1. Don SCBA breathing equipment.
2. Remove victim(s) utilizing buddy system to fresh air as quickly as possible. (go up-wind from source or at right angle to the wind. Not down wind.)
3. Briefly apply chest pressure – arm lift method of artificial respiration to clean the victim's lungs and to avoid inhaling any toxic gas directly from the victim's lungs.
4. Provide for prompt transportation to the hospital, and continue giving artificial respiration if needed.
5. Hospital(s) or medical facilities need to be informed, before-hand, of the possibility of H₂S gas poisoning – no matter how remote the possibility is.
6. Notify emergency room personnel that the victim(s) has been exposed to H₂S gas.

Besides basic first aid, everyone on location should have a good working knowledge of artificial respiration.

Revised CM 6/27/2012

OXY

PRD NM DIRECTIONAL PLANS (NAD 1983)

Saker 6_7

Saker 6_7 Fed Com 35H

Wellbore #1

Plan: Permitting Plan

Standard Planning Report

29 January, 2020

Oxy Inc.

Planning Report

Database:	HOPSP	Local Co-ordinate Reference:	Well Saker 6_7 Fed Com 35H
Company:	ENGINEERING DESIGNS	TVD Reference:	RKB=26.5' @ 3476.20ft
Project:	PRD NM DIRECTIONAL PLANS (NAD 1983)	MD Reference:	RKB=26.5' @ 3476.20ft
Site:	Saker 6_7	North Reference:	Grid
Well:	Saker 6_7 Fed Com 35H	Survey Calculation Method:	Minimum Curvature
Wellbore:	Wellbore #1		
Design:	Permitting Plan		

Project	PRD NM DIRECTIONAL PLANS (NAD 1983)		
Map System:	US State Plane 1983	System Datum:	Mean Sea Level
Geo Datum:	North American Datum 1983		
Map Zone:	New Mexico Eastern Zone		Using geodetic scale factor

Site	Saker 6_7		
Site Position:		Northing:	457,094.74 usft
From:	Map	Easting:	826,474.44 usft
Position Uncertainty:	1.00 ft	Slot Radius:	13.200 in
		Latitude:	32° 15' 11.741857 N
		Longitude:	103° 24' 39.507225 W
		Grid Convergence:	0.49 °

Well	Saker 6_7 Fed Com 35H		
Well Position	+N/-S	6.67 ft	Northing:
	+E/-W	689.86 ft	Easting:
Position Uncertainty	1.00 ft	Wellhead Elevation:	
		Latitude:	32° 15' 11.749137 N
		Longitude:	103° 24' 31.473857 W
		Ground Level:	3,449.70 ft

Wellbore	Wellbore #1				
Magnetics	Model Name	Sample Date	Declination (°)	Dip Angle (°)	Field Strength (nT)
	HDGM_FILE	12/31/2019	6.60	59.87	47,828.60000000

Design	Permitting Plan			
Audit Notes:				
Version:	Phase:	PROTOTYPE	Tie On Depth:	0.00
Vertical Section:	Depth From (TVD) (ft)	+N/-S (ft)	+E/-W (ft)	Direction (°)
	0.00	0.00	0.00	181.45

Plan Survey Tool Program	Date	1/29/2020		
Depth From (ft)	Depth To (ft)	Survey (Wellbore)	Tool Name	Remarks
1	0.00	21,903.51	Permitting Plan (Wellbore #1)	B001Mb_MWD+HRGM
			OWSG MWD + HRGM	

Plan Sections										
Measured Depth (ft)	Inclination (°)	Azimuth (°)	Vertical Depth (ft)	+N/-S (ft)	+E/-W (ft)	Dogleg Rate (°/100ft)	Build Rate (°/100ft)	Turn Rate (°/100ft)	TFO (°)	Target
0.00	0.00	0.00	0.00	0.00	0.00	0.00	0.00	0.00	0.00	
9,030.00	0.00	0.00	9,030.00	0.00	0.00	0.00	0.00	0.00	0.00	
9,530.00	10.00	298.63	9,527.47	20.85	-38.20	2.00	2.00	0.00	298.63	
11,026.23	10.00	298.63	11,000.96	145.35	-266.25	0.00	0.00	0.00	0.00	
11,948.97	87.39	179.48	11,615.20	-400.57	-351.71	10.00	8.39	-12.91	-119.18	
21,903.51	87.39	179.48	12,068.20	-10,344.38	-261.44	0.00	0.00	0.00	0.00	PBHL (Saker 6_7)

Oxy Inc.

Planning Report

Database:	HOPSPP	Local Co-ordinate Reference:	Well Saker 6_7 Fed Com 35H
Company:	ENGINEERING DESIGNS	TVD Reference:	RKB=26.5' @ 3476.20ft
Project:	PRD NM DIRECTIONAL PLANS (NAD 1983)	MD Reference:	RKB=26.5' @ 3476.20ft
Site:	Saker 6_7	North Reference:	Grid
Well:	Saker 6_7 Fed Com 35H	Survey Calculation Method:	Minimum Curvature
Wellbore:	Wellbore #1		
Design:	Permitting Plan		

Planned Survey									
Measured Depth (ft)	Inclination (°)	Azimuth (°)	Vertical Depth (ft)	+N/-S (ft)	+E/-W (ft)	Vertical Section (ft)	Dogleg Rate (°/100ft)	Build Rate (°/100ft)	Turn Rate (°/100ft)
0.00	0.00	0.00	0.00	0.00	0.00	0.00	0.00	0.00	0.00
100.00	0.00	0.00	100.00	0.00	0.00	0.00	0.00	0.00	0.00
200.00	0.00	0.00	200.00	0.00	0.00	0.00	0.00	0.00	0.00
300.00	0.00	0.00	300.00	0.00	0.00	0.00	0.00	0.00	0.00
400.00	0.00	0.00	400.00	0.00	0.00	0.00	0.00	0.00	0.00
500.00	0.00	0.00	500.00	0.00	0.00	0.00	0.00	0.00	0.00
600.00	0.00	0.00	600.00	0.00	0.00	0.00	0.00	0.00	0.00
700.00	0.00	0.00	700.00	0.00	0.00	0.00	0.00	0.00	0.00
800.00	0.00	0.00	800.00	0.00	0.00	0.00	0.00	0.00	0.00
900.00	0.00	0.00	900.00	0.00	0.00	0.00	0.00	0.00	0.00
1,000.00	0.00	0.00	1,000.00	0.00	0.00	0.00	0.00	0.00	0.00
1,100.00	0.00	0.00	1,100.00	0.00	0.00	0.00	0.00	0.00	0.00
1,200.00	0.00	0.00	1,200.00	0.00	0.00	0.00	0.00	0.00	0.00
1,300.00	0.00	0.00	1,300.00	0.00	0.00	0.00	0.00	0.00	0.00
1,400.00	0.00	0.00	1,400.00	0.00	0.00	0.00	0.00	0.00	0.00
1,500.00	0.00	0.00	1,500.00	0.00	0.00	0.00	0.00	0.00	0.00
1,600.00	0.00	0.00	1,600.00	0.00	0.00	0.00	0.00	0.00	0.00
1,700.00	0.00	0.00	1,700.00	0.00	0.00	0.00	0.00	0.00	0.00
1,800.00	0.00	0.00	1,800.00	0.00	0.00	0.00	0.00	0.00	0.00
1,900.00	0.00	0.00	1,900.00	0.00	0.00	0.00	0.00	0.00	0.00
2,000.00	0.00	0.00	2,000.00	0.00	0.00	0.00	0.00	0.00	0.00
2,100.00	0.00	0.00	2,100.00	0.00	0.00	0.00	0.00	0.00	0.00
2,200.00	0.00	0.00	2,200.00	0.00	0.00	0.00	0.00	0.00	0.00
2,300.00	0.00	0.00	2,300.00	0.00	0.00	0.00	0.00	0.00	0.00
2,400.00	0.00	0.00	2,400.00	0.00	0.00	0.00	0.00	0.00	0.00
2,500.00	0.00	0.00	2,500.00	0.00	0.00	0.00	0.00	0.00	0.00
2,600.00	0.00	0.00	2,600.00	0.00	0.00	0.00	0.00	0.00	0.00
2,700.00	0.00	0.00	2,700.00	0.00	0.00	0.00	0.00	0.00	0.00
2,800.00	0.00	0.00	2,800.00	0.00	0.00	0.00	0.00	0.00	0.00
2,900.00	0.00	0.00	2,900.00	0.00	0.00	0.00	0.00	0.00	0.00
3,000.00	0.00	0.00	3,000.00	0.00	0.00	0.00	0.00	0.00	0.00
3,100.00	0.00	0.00	3,100.00	0.00	0.00	0.00	0.00	0.00	0.00
3,200.00	0.00	0.00	3,200.00	0.00	0.00	0.00	0.00	0.00	0.00
3,300.00	0.00	0.00	3,300.00	0.00	0.00	0.00	0.00	0.00	0.00
3,400.00	0.00	0.00	3,400.00	0.00	0.00	0.00	0.00	0.00	0.00
3,500.00	0.00	0.00	3,500.00	0.00	0.00	0.00	0.00	0.00	0.00
3,600.00	0.00	0.00	3,600.00	0.00	0.00	0.00	0.00	0.00	0.00
3,700.00	0.00	0.00	3,700.00	0.00	0.00	0.00	0.00	0.00	0.00
3,800.00	0.00	0.00	3,800.00	0.00	0.00	0.00	0.00	0.00	0.00
3,900.00	0.00	0.00	3,900.00	0.00	0.00	0.00	0.00	0.00	0.00
4,000.00	0.00	0.00	4,000.00	0.00	0.00	0.00	0.00	0.00	0.00
4,100.00	0.00	0.00	4,100.00	0.00	0.00	0.00	0.00	0.00	0.00
4,200.00	0.00	0.00	4,200.00	0.00	0.00	0.00	0.00	0.00	0.00
4,300.00	0.00	0.00	4,300.00	0.00	0.00	0.00	0.00	0.00	0.00
4,400.00	0.00	0.00	4,400.00	0.00	0.00	0.00	0.00	0.00	0.00
4,500.00	0.00	0.00	4,500.00	0.00	0.00	0.00	0.00	0.00	0.00
4,600.00	0.00	0.00	4,600.00	0.00	0.00	0.00	0.00	0.00	0.00
4,700.00	0.00	0.00	4,700.00	0.00	0.00	0.00	0.00	0.00	0.00
4,800.00	0.00	0.00	4,800.00	0.00	0.00	0.00	0.00	0.00	0.00
4,900.00	0.00	0.00	4,900.00	0.00	0.00	0.00	0.00	0.00	0.00
5,000.00	0.00	0.00	5,000.00	0.00	0.00	0.00	0.00	0.00	0.00
5,100.00	0.00	0.00	5,100.00	0.00	0.00	0.00	0.00	0.00	0.00
5,200.00	0.00	0.00	5,200.00	0.00	0.00	0.00	0.00	0.00	0.00
5,300.00	0.00	0.00	5,300.00	0.00	0.00	0.00	0.00	0.00	0.00

Oxy Inc.

Planning Report

Database:	HOPSP	Local Co-ordinate Reference:	Well Saker 6_7 Fed Com 35H
Company:	ENGINEERING DESIGNS	TVD Reference:	RKB=26.5' @ 3476.20ft
Project:	PRD NM DIRECTIONAL PLANS (NAD 1983)	MD Reference:	RKB=26.5' @ 3476.20ft
Site:	Saker 6_7	North Reference:	Grid
Well:	Saker 6_7 Fed Com 35H	Survey Calculation Method:	Minimum Curvature
Wellbore:	Wellbore #1		
Design:	Permitting Plan		

Planned Survey									
Measured Depth (ft)	Inclination (°)	Azimuth (°)	Vertical Depth (ft)	+N/-S (ft)	+E/-W (ft)	Vertical Section (ft)	Dogleg Rate (°/100ft)	Build Rate (°/100ft)	Turn Rate (°/100ft)
5,400.00	0.00	0.00	5,400.00	0.00	0.00	0.00	0.00	0.00	0.00
5,500.00	0.00	0.00	5,500.00	0.00	0.00	0.00	0.00	0.00	0.00
5,600.00	0.00	0.00	5,600.00	0.00	0.00	0.00	0.00	0.00	0.00
5,700.00	0.00	0.00	5,700.00	0.00	0.00	0.00	0.00	0.00	0.00
5,800.00	0.00	0.00	5,800.00	0.00	0.00	0.00	0.00	0.00	0.00
5,900.00	0.00	0.00	5,900.00	0.00	0.00	0.00	0.00	0.00	0.00
6,000.00	0.00	0.00	6,000.00	0.00	0.00	0.00	0.00	0.00	0.00
6,100.00	0.00	0.00	6,100.00	0.00	0.00	0.00	0.00	0.00	0.00
6,200.00	0.00	0.00	6,200.00	0.00	0.00	0.00	0.00	0.00	0.00
6,300.00	0.00	0.00	6,300.00	0.00	0.00	0.00	0.00	0.00	0.00
6,400.00	0.00	0.00	6,400.00	0.00	0.00	0.00	0.00	0.00	0.00
6,500.00	0.00	0.00	6,500.00	0.00	0.00	0.00	0.00	0.00	0.00
6,600.00	0.00	0.00	6,600.00	0.00	0.00	0.00	0.00	0.00	0.00
6,700.00	0.00	0.00	6,700.00	0.00	0.00	0.00	0.00	0.00	0.00
6,800.00	0.00	0.00	6,800.00	0.00	0.00	0.00	0.00	0.00	0.00
6,900.00	0.00	0.00	6,900.00	0.00	0.00	0.00	0.00	0.00	0.00
7,000.00	0.00	0.00	7,000.00	0.00	0.00	0.00	0.00	0.00	0.00
7,100.00	0.00	0.00	7,100.00	0.00	0.00	0.00	0.00	0.00	0.00
7,200.00	0.00	0.00	7,200.00	0.00	0.00	0.00	0.00	0.00	0.00
7,300.00	0.00	0.00	7,300.00	0.00	0.00	0.00	0.00	0.00	0.00
7,400.00	0.00	0.00	7,400.00	0.00	0.00	0.00	0.00	0.00	0.00
7,500.00	0.00	0.00	7,500.00	0.00	0.00	0.00	0.00	0.00	0.00
7,600.00	0.00	0.00	7,600.00	0.00	0.00	0.00	0.00	0.00	0.00
7,700.00	0.00	0.00	7,700.00	0.00	0.00	0.00	0.00	0.00	0.00
7,800.00	0.00	0.00	7,800.00	0.00	0.00	0.00	0.00	0.00	0.00
7,900.00	0.00	0.00	7,900.00	0.00	0.00	0.00	0.00	0.00	0.00
8,000.00	0.00	0.00	8,000.00	0.00	0.00	0.00	0.00	0.00	0.00
8,100.00	0.00	0.00	8,100.00	0.00	0.00	0.00	0.00	0.00	0.00
8,200.00	0.00	0.00	8,200.00	0.00	0.00	0.00	0.00	0.00	0.00
8,300.00	0.00	0.00	8,300.00	0.00	0.00	0.00	0.00	0.00	0.00
8,400.00	0.00	0.00	8,400.00	0.00	0.00	0.00	0.00	0.00	0.00
8,500.00	0.00	0.00	8,500.00	0.00	0.00	0.00	0.00	0.00	0.00
8,600.00	0.00	0.00	8,600.00	0.00	0.00	0.00	0.00	0.00	0.00
8,700.00	0.00	0.00	8,700.00	0.00	0.00	0.00	0.00	0.00	0.00
8,800.00	0.00	0.00	8,800.00	0.00	0.00	0.00	0.00	0.00	0.00
8,900.00	0.00	0.00	8,900.00	0.00	0.00	0.00	0.00	0.00	0.00
9,000.00	0.00	0.00	9,000.00	0.00	0.00	0.00	0.00	0.00	0.00
9,030.00	0.00	0.00	9,030.00	0.00	0.00	0.00	0.00	0.00	0.00
9,100.00	1.40	298.63	9,099.99	0.41	-0.75	-0.39	2.00	2.00	0.00
9,200.00	3.40	298.63	9,199.90	2.42	-4.43	-2.30	2.00	2.00	0.00
9,300.00	5.40	298.63	9,299.60	6.09	-11.16	-5.81	2.00	2.00	0.00
9,400.00	7.40	298.63	9,398.97	11.43	-20.94	-10.90	2.00	2.00	0.00
9,500.00	9.40	298.63	9,497.89	18.43	-33.76	-17.57	2.00	2.00	0.00
9,530.00	10.00	298.63	9,527.47	20.85	-38.20	-19.88	2.00	2.00	0.00
9,600.00	10.00	298.63	9,596.40	26.68	-48.87	-25.43	0.00	0.00	0.00
9,700.00	10.00	298.63	9,694.88	35.00	-64.11	-33.37	0.00	0.00	0.00
9,800.00	10.00	298.63	9,793.36	43.32	-79.35	-41.30	0.00	0.00	0.00
9,900.00	10.00	298.63	9,891.84	51.64	-94.60	-49.23	0.00	0.00	0.00
10,000.00	10.00	298.63	9,990.33	59.96	-109.84	-57.17	0.00	0.00	0.00
10,100.00	10.00	298.63	10,088.81	68.28	-125.08	-65.10	0.00	0.00	0.00
10,200.00	10.00	298.63	10,187.29	76.60	-140.32	-73.03	0.00	0.00	0.00
10,300.00	10.00	298.63	10,285.77	84.92	-155.56	-80.96	0.00	0.00	0.00
10,400.00	10.00	298.63	10,384.25	93.24	-170.80	-88.90	0.00	0.00	0.00
10,500.00	10.00	298.63	10,482.73	101.56	-186.05	-96.83	0.00	0.00	0.00

Oxy Inc.

Planning Report

Database:	HOPSPP	Local Co-ordinate Reference:	Well Saker 6_7 Fed Com 35H
Company:	ENGINEERING DESIGNS	TVD Reference:	RKB=26.5' @ 3476.20ft
Project:	PRD NM DIRECTIONAL PLANS (NAD 1983)	MD Reference:	RKB=26.5' @ 3476.20ft
Site:	Saker 6_7	North Reference:	Grid
Well:	Saker 6_7 Fed Com 35H	Survey Calculation Method:	Minimum Curvature
Wellbore:	Wellbore #1		
Design:	Permitting Plan		

Planned Survey									
Measured Depth (ft)	Inclination (°)	Azimuth (°)	Vertical Depth (ft)	+N/-S (ft)	+E/-W (ft)	Vertical Section (ft)	Dogleg Rate (°/100ft)	Build Rate (°/100ft)	Turn Rate (°/100ft)
10,600.00	10.00	298.63	10,581.21	109.88	-201.29	-104.76	0.00	0.00	0.00
10,700.00	10.00	298.63	10,679.69	118.20	-216.53	-112.69	0.00	0.00	0.00
10,800.00	10.00	298.63	10,778.17	126.52	-231.77	-120.63	0.00	0.00	0.00
10,900.00	10.00	298.63	10,876.65	134.84	-247.01	-128.56	0.00	0.00	0.00
11,000.00	10.00	298.63	10,975.13	143.16	-262.25	-136.49	0.00	0.00	0.00
11,026.23	10.00	298.63	11,000.96	145.35	-266.25	-138.57	0.00	0.00	0.00
11,100.00	9.06	253.23	11,073.81	146.74	-277.45	-139.68	10.00	-1.27	-61.54
11,200.00	15.17	213.53	11,171.70	133.53	-292.25	-126.10	10.00	6.11	-39.71
11,300.00	24.02	199.22	11,265.86	103.33	-306.21	-95.56	10.00	8.84	-14.31
11,400.00	33.49	192.48	11,353.46	57.06	-318.91	-48.98	10.00	9.48	-6.73
11,500.00	43.18	188.49	11,431.81	-3.88	-329.95	12.21	10.00	9.69	-4.00
11,600.00	52.97	185.72	11,498.55	-77.62	-339.00	86.17	10.00	9.79	-2.76
11,700.00	62.81	183.60	11,551.65	-161.94	-345.79	170.63	10.00	9.84	-2.12
11,800.00	72.67	181.82	11,589.48	-254.27	-350.12	263.04	10.00	9.86	-1.78
11,900.00	82.55	180.23	11,610.91	-351.80	-351.84	360.58	10.00	9.88	-1.59
11,948.97	87.39	179.48	11,615.20	-400.57	-351.71	409.33	10.00	9.88	-1.53
12,000.00	87.39	179.48	11,617.52	-451.55	-351.25	460.28	0.00	0.00	0.00
12,100.00	87.39	179.48	11,622.07	-551.44	-350.34	560.11	0.00	0.00	0.00
12,200.00	87.39	179.48	11,626.62	-651.33	-349.43	659.95	0.00	0.00	0.00
12,300.00	87.39	179.48	11,631.17	-751.22	-348.53	759.79	0.00	0.00	0.00
12,400.00	87.39	179.48	11,635.72	-851.11	-347.62	859.63	0.00	0.00	0.00
12,500.00	87.39	179.48	11,640.28	-951.01	-346.71	959.46	0.00	0.00	0.00
12,600.00	87.39	179.48	11,644.83	-1,050.90	-345.81	1,059.30	0.00	0.00	0.00
12,700.00	87.39	179.48	11,649.38	-1,150.79	-344.90	1,159.14	0.00	0.00	0.00
12,800.00	87.39	179.48	11,653.93	-1,250.68	-343.99	1,258.98	0.00	0.00	0.00
12,900.00	87.39	179.48	11,658.48	-1,350.58	-343.09	1,358.81	0.00	0.00	0.00
13,000.00	87.39	179.48	11,663.03	-1,450.47	-342.18	1,458.65	0.00	0.00	0.00
13,100.00	87.39	179.48	11,667.58	-1,550.36	-341.27	1,558.49	0.00	0.00	0.00
13,200.00	87.39	179.48	11,672.13	-1,650.25	-340.37	1,658.33	0.00	0.00	0.00
13,300.00	87.39	179.48	11,676.68	-1,750.15	-339.46	1,758.16	0.00	0.00	0.00
13,400.00	87.39	179.48	11,681.23	-1,850.04	-338.55	1,858.00	0.00	0.00	0.00
13,500.00	87.39	179.48	11,685.78	-1,949.93	-337.65	1,957.84	0.00	0.00	0.00
13,600.00	87.39	179.48	11,690.33	-2,049.82	-336.74	2,057.68	0.00	0.00	0.00
13,700.00	87.39	179.48	11,694.88	-2,149.71	-335.83	2,157.51	0.00	0.00	0.00
13,800.00	87.39	179.48	11,699.43	-2,249.61	-334.92	2,257.35	0.00	0.00	0.00
13,900.00	87.39	179.48	11,703.99	-2,349.50	-334.02	2,357.19	0.00	0.00	0.00
14,000.00	87.39	179.48	11,708.54	-2,449.39	-333.11	2,457.03	0.00	0.00	0.00
14,100.00	87.39	179.48	11,713.09	-2,549.28	-332.20	2,556.86	0.00	0.00	0.00
14,200.00	87.39	179.48	11,717.64	-2,649.18	-331.30	2,656.70	0.00	0.00	0.00
14,300.00	87.39	179.48	11,722.19	-2,749.07	-330.39	2,756.54	0.00	0.00	0.00
14,400.00	87.39	179.48	11,726.74	-2,848.96	-329.48	2,856.38	0.00	0.00	0.00
14,500.00	87.39	179.48	11,731.29	-2,948.85	-328.58	2,956.21	0.00	0.00	0.00
14,600.00	87.39	179.48	11,735.84	-3,048.74	-327.67	3,056.05	0.00	0.00	0.00
14,700.00	87.39	179.48	11,740.39	-3,148.64	-326.76	3,155.89	0.00	0.00	0.00
14,800.00	87.39	179.48	11,744.94	-3,248.53	-325.86	3,255.73	0.00	0.00	0.00
14,900.00	87.39	179.48	11,749.49	-3,348.42	-324.95	3,355.56	0.00	0.00	0.00
15,000.00	87.39	179.48	11,754.04	-3,448.31	-324.04	3,455.40	0.00	0.00	0.00
15,100.00	87.39	179.48	11,758.59	-3,548.21	-323.14	3,555.24	0.00	0.00	0.00
15,200.00	87.39	179.48	11,763.14	-3,648.10	-322.23	3,655.08	0.00	0.00	0.00
15,300.00	87.39	179.48	11,767.69	-3,747.99	-321.32	3,754.91	0.00	0.00	0.00
15,400.00	87.39	179.48	11,772.25	-3,847.88	-320.42	3,854.75	0.00	0.00	0.00
15,500.00	87.39	179.48	11,776.80	-3,947.78	-319.51	3,954.59	0.00	0.00	0.00
15,600.00	87.39	179.48	11,781.35	-4,047.67	-318.60	4,054.43	0.00	0.00	0.00
15,700.00	87.39	179.48	11,785.90	-4,147.56	-317.69	4,154.26	0.00	0.00	0.00

Oxy Inc.

Planning Report

Database:	HOPSPP	Local Co-ordinate Reference:	Well Saker 6_7 Fed Com 35H
Company:	ENGINEERING DESIGNS	TVD Reference:	RKB=26.5' @ 3476.20ft
Project:	PRD NM DIRECTIONAL PLANS (NAD 1983)	MD Reference:	RKB=26.5' @ 3476.20ft
Site:	Saker 6_7	North Reference:	Grid
Well:	Saker 6_7 Fed Com 35H	Survey Calculation Method:	Minimum Curvature
Wellbore:	Wellbore #1		
Design:	Permitting Plan		

Planned Survey									
Measured Depth (ft)	Inclination (°)	Azimuth (°)	Vertical Depth (ft)	+N/-S (ft)	+E/-W (ft)	Vertical Section (ft)	Dogleg Rate (°/100ft)	Build Rate (°/100ft)	Turn Rate (°/100ft)
15,800.00	87.39	179.48	11,790.45	-4,247.45	-316.79	4,254.10	0.00	0.00	0.00
15,900.00	87.39	179.48	11,795.00	-4,347.34	-315.88	4,353.94	0.00	0.00	0.00
16,000.00	87.39	179.48	11,799.55	-4,447.24	-314.97	4,453.78	0.00	0.00	0.00
16,100.00	87.39	179.48	11,804.10	-4,547.13	-314.07	4,553.61	0.00	0.00	0.00
16,200.00	87.39	179.48	11,808.65	-4,647.02	-313.16	4,653.45	0.00	0.00	0.00
16,300.00	87.39	179.48	11,813.20	-4,746.91	-312.25	4,753.29	0.00	0.00	0.00
16,400.00	87.39	179.48	11,817.75	-4,846.81	-311.35	4,853.13	0.00	0.00	0.00
16,500.00	87.39	179.48	11,822.30	-4,946.70	-310.44	4,952.96	0.00	0.00	0.00
16,600.00	87.39	179.48	11,826.85	-5,046.59	-309.53	5,052.80	0.00	0.00	0.00
16,700.00	87.39	179.48	11,831.40	-5,146.48	-308.63	5,152.64	0.00	0.00	0.00
16,800.00	87.39	179.48	11,835.96	-5,246.38	-307.72	5,252.48	0.00	0.00	0.00
16,900.00	87.39	179.48	11,840.51	-5,346.27	-306.81	5,352.31	0.00	0.00	0.00
17,000.00	87.39	179.48	11,845.06	-5,446.16	-305.91	5,452.15	0.00	0.00	0.00
17,100.00	87.39	179.48	11,849.61	-5,546.05	-305.00	5,551.99	0.00	0.00	0.00
17,200.00	87.39	179.48	11,854.16	-5,645.94	-304.09	5,651.83	0.00	0.00	0.00
17,300.00	87.39	179.48	11,858.71	-5,745.84	-303.19	5,751.66	0.00	0.00	0.00
17,400.00	87.39	179.48	11,863.26	-5,845.73	-302.28	5,851.50	0.00	0.00	0.00
17,500.00	87.39	179.48	11,867.81	-5,945.62	-301.37	5,951.34	0.00	0.00	0.00
17,600.00	87.39	179.48	11,872.36	-6,045.51	-300.47	6,051.18	0.00	0.00	0.00
17,700.00	87.39	179.48	11,876.91	-6,145.41	-299.56	6,151.01	0.00	0.00	0.00
17,800.00	87.39	179.48	11,881.46	-6,245.30	-298.65	6,250.85	0.00	0.00	0.00
17,900.00	87.39	179.48	11,886.01	-6,345.19	-297.74	6,350.69	0.00	0.00	0.00
18,000.00	87.39	179.48	11,890.56	-6,445.08	-296.84	6,450.52	0.00	0.00	0.00
18,100.00	87.39	179.48	11,895.11	-6,544.97	-295.93	6,550.36	0.00	0.00	0.00
18,200.00	87.39	179.48	11,899.67	-6,644.87	-295.02	6,650.20	0.00	0.00	0.00
18,300.00	87.39	179.48	11,904.22	-6,744.76	-294.12	6,750.04	0.00	0.00	0.00
18,400.00	87.39	179.48	11,908.77	-6,844.65	-293.21	6,849.87	0.00	0.00	0.00
18,500.00	87.39	179.48	11,913.32	-6,944.54	-292.30	6,949.71	0.00	0.00	0.00
18,600.00	87.39	179.48	11,917.87	-7,044.44	-291.40	7,049.55	0.00	0.00	0.00
18,700.00	87.39	179.48	11,922.42	-7,144.33	-290.49	7,149.39	0.00	0.00	0.00
18,800.00	87.39	179.48	11,926.97	-7,244.22	-289.58	7,249.22	0.00	0.00	0.00
18,900.00	87.39	179.48	11,931.52	-7,344.11	-288.68	7,349.06	0.00	0.00	0.00
19,000.00	87.39	179.48	11,936.07	-7,444.01	-287.77	7,448.90	0.00	0.00	0.00
19,100.00	87.39	179.48	11,940.62	-7,543.90	-286.86	7,548.74	0.00	0.00	0.00
19,200.00	87.39	179.48	11,945.17	-7,643.79	-285.96	7,648.57	0.00	0.00	0.00
19,300.00	87.39	179.48	11,949.72	-7,743.68	-285.05	7,748.41	0.00	0.00	0.00
19,400.00	87.39	179.48	11,954.27	-7,843.57	-284.14	7,848.25	0.00	0.00	0.00
19,500.00	87.39	179.48	11,958.82	-7,943.47	-283.24	7,948.09	0.00	0.00	0.00
19,600.00	87.39	179.48	11,963.37	-8,043.36	-282.33	8,047.92	0.00	0.00	0.00
19,700.00	87.39	179.48	11,967.93	-8,143.25	-281.42	8,147.76	0.00	0.00	0.00
19,800.00	87.39	179.48	11,972.48	-8,243.14	-280.52	8,247.60	0.00	0.00	0.00
19,900.00	87.39	179.48	11,977.03	-8,343.04	-279.61	8,347.44	0.00	0.00	0.00
20,000.00	87.39	179.48	11,981.58	-8,442.93	-278.70	8,447.27	0.00	0.00	0.00
20,100.00	87.39	179.48	11,986.13	-8,542.82	-277.79	8,547.11	0.00	0.00	0.00
20,200.00	87.39	179.48	11,990.68	-8,642.71	-276.89	8,646.95	0.00	0.00	0.00
20,300.00	87.39	179.48	11,995.23	-8,742.61	-275.98	8,746.79	0.00	0.00	0.00
20,400.00	87.39	179.48	11,999.78	-8,842.50	-275.07	8,846.62	0.00	0.00	0.00
20,500.00	87.39	179.48	12,004.33	-8,942.39	-274.17	8,946.46	0.00	0.00	0.00
20,600.00	87.39	179.48	12,008.88	-9,042.28	-273.26	9,046.30	0.00	0.00	0.00
20,700.00	87.39	179.48	12,013.43	-9,142.17	-272.35	9,146.14	0.00	0.00	0.00
20,800.00	87.39	179.48	12,017.98	-9,242.07	-271.45	9,245.97	0.00	0.00	0.00
20,900.00	87.39	179.48	12,022.53	-9,341.96	-270.54	9,345.81	0.00	0.00	0.00
21,000.00	87.39	179.48	12,027.08	-9,441.85	-269.63	9,445.65	0.00	0.00	0.00
21,100.00	87.39	179.48	12,031.64	-9,541.74	-268.73	9,545.49	0.00	0.00	0.00

Oxy Inc.

Planning Report

Database:	HOPSP	Local Co-ordinate Reference:	Well Saker 6_7 Fed Com 35H
Company:	ENGINEERING DESIGNS	TVD Reference:	RKB=26.5' @ 3476.20ft
Project:	PRD NM DIRECTIONAL PLANS (NAD 1983)	MD Reference:	RKB=26.5' @ 3476.20ft
Site:	Saker 6_7	North Reference:	Grid
Well:	Saker 6_7 Fed Com 35H	Survey Calculation Method:	Minimum Curvature
Wellbore:	Wellbore #1		
Design:	Permitting Plan		

Planned Survey									
Measured Depth (ft)	Inclination (°)	Azimuth (°)	Vertical Depth (ft)	+N/-S (ft)	+E/-W (ft)	Vertical Section (ft)	Dogleg Rate (°/100ft)	Build Rate (°/100ft)	Turn Rate (°/100ft)
21,200.00	87.39	179.48	12,036.19	-9,641.64	-267.82	9,645.32	0.00	0.00	0.00
21,300.00	87.39	179.48	12,040.74	-9,741.53	-266.91	9,745.16	0.00	0.00	0.00
21,400.00	87.39	179.48	12,045.29	-9,841.42	-266.01	9,845.00	0.00	0.00	0.00
21,500.00	87.39	179.48	12,049.84	-9,941.31	-265.10	9,944.84	0.00	0.00	0.00
21,600.00	87.39	179.48	12,054.39	-10,041.21	-264.19	10,044.67	0.00	0.00	0.00
21,700.00	87.39	179.48	12,058.94	-10,141.10	-263.29	10,144.51	0.00	0.00	0.00
21,800.00	87.39	179.48	12,063.49	-10,240.99	-262.38	10,244.35	0.00	0.00	0.00
21,900.00	87.39	179.48	12,068.04	-10,340.88	-261.47	10,344.19	0.00	0.00	0.00
21,903.51	87.39	179.48	12,068.20	-10,344.38	-261.44	10,347.69	0.00	0.00	0.00

Design Targets									
Target Name	Dip Angle (°)	Dip Dir. (°)	TVD (ft)	+N/-S (ft)	+E/-W (ft)	Northing (usft)	Easting (usft)	Latitude	Longitude
FTP (Saker 6_7 Fed - hit/miss target - Shape - Point)	0.00	0.00	11,615.20	96.54	-355.80	457,197.95	826,808.50	32° 15' 12.734676 N	103° 24' 35.607107
- plan misses target center by 202.29ft at 11550.80ft MD (11467.31 TVD, -39.88 N, -334.82 E)									
PBHL (Saker 6_7 Fed - plan hits target center - Point)	0.00	0.00	12,068.20	-10,344.38	-261.44	446,757.02	826,902.86	32° 13' 29.416239 N	103° 24' 35.553752

Plan Annotations				
Measured Depth (ft)	Vertical Depth (ft)	Local Coordinates		Comment
		+N/-S (ft)	+E/-W (ft)	
9,030.00	9,030.00	0.00	0.00	Build 2°/100'
9,530.00	9,527.47	20.85	-38.20	Hold 10° Tangent
11,026.23	11,000.96	145.35	-266.25	KOP, Build & Turn 10°/100'
11,948.97	11,615.20	-400.57	-351.71	Landing Point
21,903.51	12,068.20	-10,344.38	-261.44	TD at 21903.51' MD



Project: PRD NM DIRECTIONAL PLANS (NAD 1983)
 Site: Saker 6_7
 Well: Saker 6_7 Fed Com 35H
 Wellbore: Wellbore #1
 Design: Permitting Plan

PROJECT DETAILS: NM DIRECTIONAL PLANS (NAD 1983)

Geodetic System: US State Plane 1983
 Datum: North American Datum 1983
 Ellipsoid: GRS 1980
 Zone: New Mexico Eastern Zone

System Datum: Mean Sea Level

WELL DETAILS: Saker 6_7 Fed Com 35H

+N/-S	+E/-W	Northing	Easting	Latitude	Longitude
0.00	0.00	457101.41	3449.70 827164.30	32° 15' 11.749137 N	103° 24' 31.473857 W

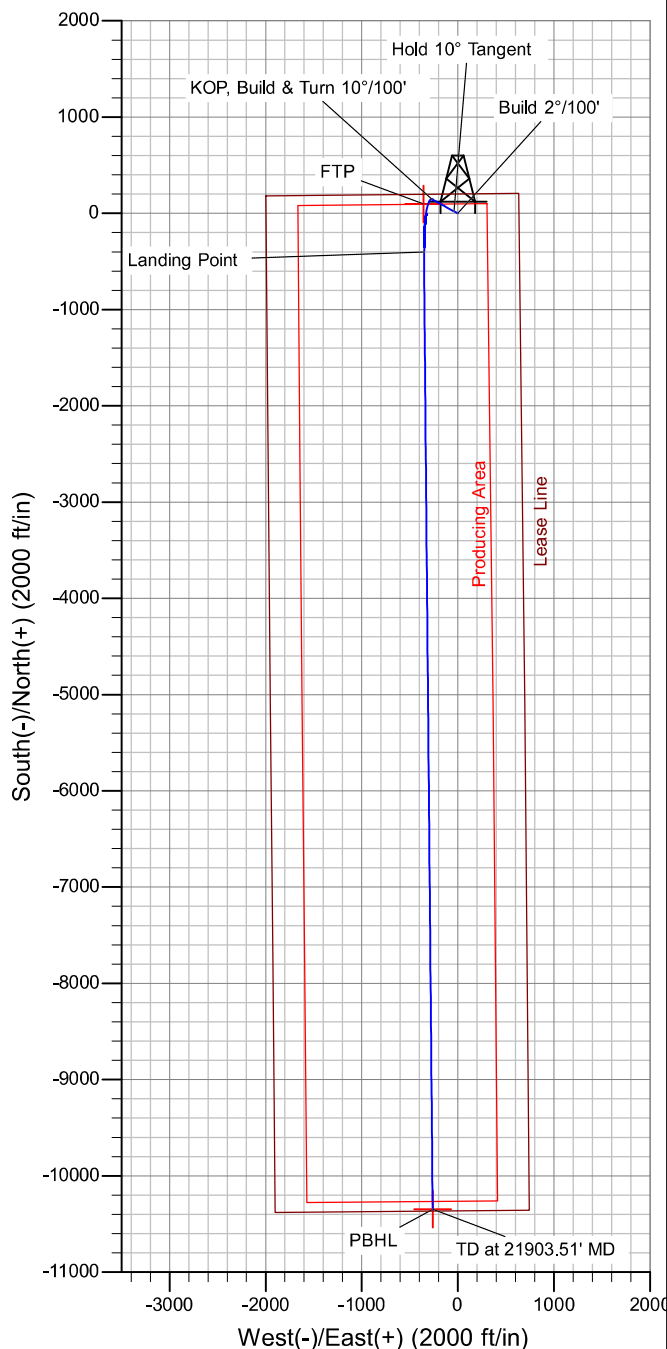
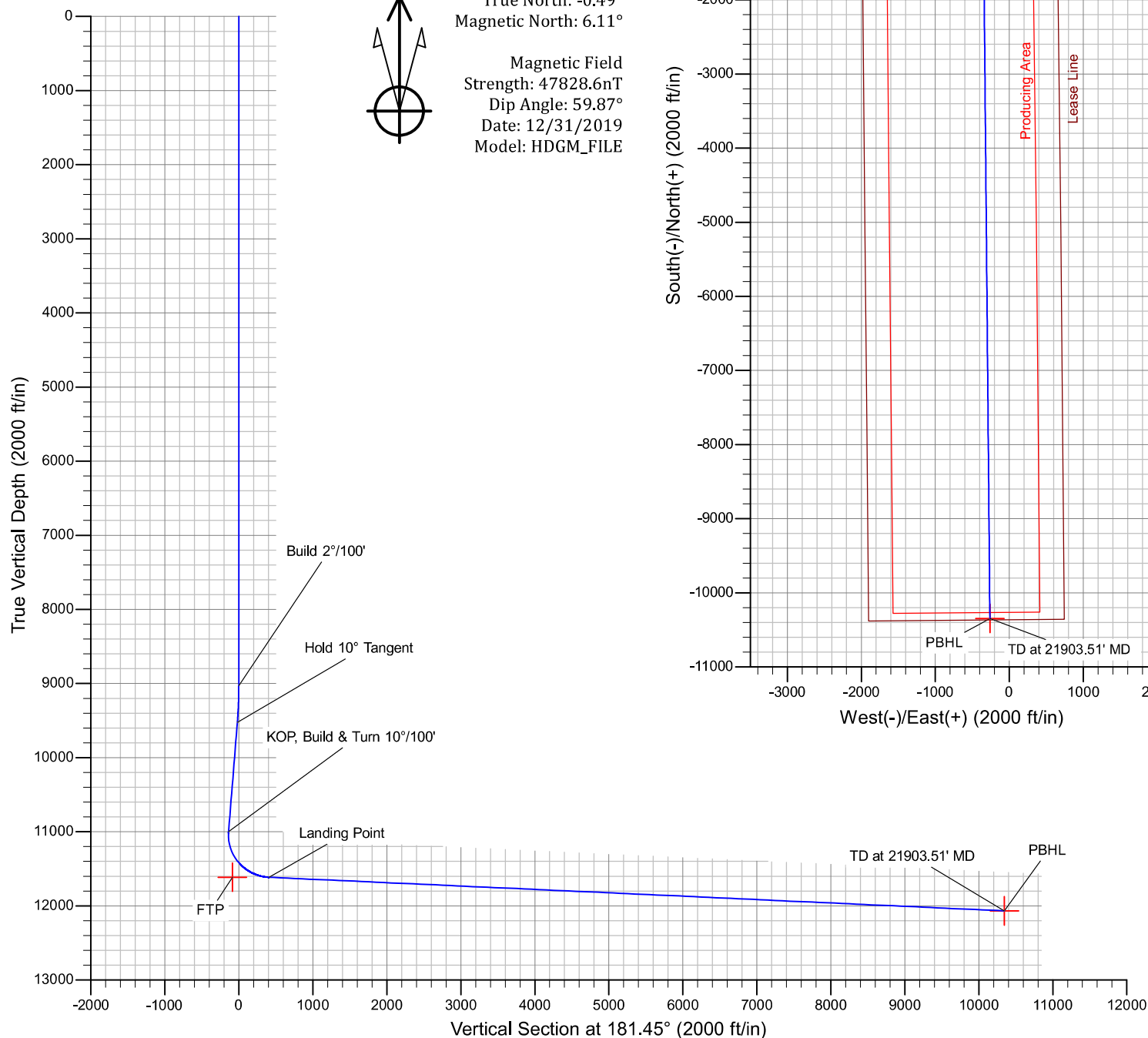
SECTION DETAILS

MD	Inc	Azi	TVD	+N/-S	+E/-W	Dleg	TFace	Vsect	Annotation
0.00	0.00	0.00	0.00	0.00	0.00	0.00	0.00	0.00	
9030.00	0.00	0.00	9030.00	0.00	0.00	0.00	0.00	0.00	Build 2°/100'
9530.00	10.00	298.63	9527.47	20.85	-38.20	2.00	298.63	-19.88	Hold 10° Tangent
11026.23	10.00	298.63	11000.96	145.35	-266.25	0.00	0.00	-138.57	KOP, Build & Turn 10°/100'
11948.97	87.39	179.48	11615.20	-400.57	-351.71	10.00	-119.18	409.33	Landing Point
21903.51	87.39	179.48	12068.20	-10344.38	-261.44	0.00	0.00	10347.69	TD at 21903.51' MD



Azimuths to Grid North
 True North: -0.49°
 Magnetic North: 6.11°

Magnetic Field
 Strength: 47828.6nT
 Dip Angle: 59.87°
 Date: 12/31/2019
 Model: HDGM_FILE



Oxy USA Inc. - Saker 6_7 Fed Com 35H

1. Geologic Formations

TVD of target	12068'	Pilot Hole Depth	N/A
MD at TD:	21903'	Deepest Expected fresh water:	397'

Delaware Basin

Formation	TVD - RKB	Expected Fluids
Rustler	848	
Salado	1,057	Salt
Castile	3,393	Salt
Lamar/Delaware	5,232	Oil/Gas/Brine
Bell Canyon	5,283	Oil/Gas/Brine
Cherry Canyon	6,165	Oil/Gas/Brine
Brushy Canyon	7,529	Losses
Bone Spring	8,727	Oil/Gas
1st Bone Spring	9,825	Oil/Gas
2nd Bone Spring	10,283	Oil/Gas
3rd Bone Spring	11,288	Oil/Gas
Wolfcamp	11,537	Oil/Gas

*H₂S, water flows, loss of circulation, abnormal pressures, etc.

2. Casing Program

Hole Size (in)	Casing Interval		Csg. Size (in)	Weight (lbs)	Grade	Conn.	SF Collapse	SF Burst	Buoyant	Buoyant
	From (ft)	To (ft)							Body SF Tension	Joint SF Tension
14.75	0	997	10.75	40.5	J-55	BTC	1.125	1.2	1.4	1.4
9.875	0	10926	7.625	26.4	L-80 HC	BTC	1.125	1.2	1.4	1.4
6.75	0	21903	5.5	20	P-110	DQX	1.125	1.2	1.4	1.4
SF Values will meet or Exceed										

All casing strings will be tested in accordance with Onshore Oil and Gas Order #2 III.B.1.h

*Oxy requests the option to set casing shallower yet still below the salts if losses or hole conditions require this. Cement volumes may be adjusted if casing is set shallower and a DV tool may be run in case hole conditions merit pumping a second stage cement job to comply with permitted top of cement. If cement circulated to surface during first stage, we will drop a cancellation cone and not pump the second stage.

*Oxy requests the option to run production casing with DQX, SF TORQ, and/or DQW TORQ connections to accommodate hole conditions or drilling operations.

Annular Clearance Variance Request

As per the agreement reached in the Oxy/BLM meeting on Feb 22, 2018, Oxy requests permission to allow deviation from the 0.422" annular clearance requirement from Onshore Order #2 under the following conditions:

1. Annular clearance to meet or exceed 0.422" between intermediate casing ID and production casing coupling only on the first 500' overlap between both casings.
2. Annular clearance less than 0.422" is acceptable for the curve and lateral portions of the production open hole section.

	Y or N
Is casing new? If used, attach certification as required in Onshore Order #1	Y
Does casing meet API specifications? If no, attach casing specification sheet.	Y
Is premium or uncommon casing planned? If yes attach casing specification sheet.	Y

Oxy USA Inc. - Saker 6_7 Fed Com 35H

Does the above casing design meet or exceed BLM's minimum standards? If not provide justification (loading assumptions, casing design criteria).	Y
Will the intermediate pipe be kept at a minimum 1/3 fluid filled to avoid approaching the collapse pressure rating of the casing?	Y
Is well located within Capitan Reef?	N
If yes, does production casing cement tie back a minimum of 50' above the Reef?	
Is well within the designated 4 string boundary.	
Is well located in SOPA but not in R-111-P?	N
If yes, are the first 2 strings cemented to surface and 3 rd string cement tied back 500' into previous casing?	
Is well located in R-111-P and SOPA?	N
If yes, are the first three strings cemented to surface?	
Is 2 nd string set 100' to 600' below the base of salt?	
Is well located in high Cave/Karst?	N
If yes, are there two strings cemented to surface?	
(For 2 string wells) If yes, is there a contingency casing if lost circulation occurs?	
Is well located in critical Cave/Karst?	N
If yes, are there three strings cemented to surface?	

3. Cementing Program

Casing String	# Sks	Wt. (lb/gal)	Yld (ft ³ /sack)	H2O (gal/sk)	500# Comp. Strength (hours)	Slurry Description
Surface (Lead)	N/A	N/A	N/A	N/A	N/A	N/A
Surface (Tail)	821	14.8	1.33	6.365	5:26	Class C Cement, Accelerator
Intermediate 1st Stage (Lead)	N/A	N/A	N/A	N/A	N/A	N/A
Intermediate 1st Stage (Tail)	437	13.2	1.65	8.640	11:54	Class H Cement, Retarder, Dispersant, Salt
Intermediate 2nd Stage (Tail Slurry) to be pumped as Bradenhead Squeeze from surface, down the Intermediate annulus						
Intermediate 2nd Stage (Lead)	N/A	N/A	N/A	N/A	N/A	N/A
Intermediate 2nd Stage (Tail)	957	12.9	1.92	10.41	23:10	Class C Cement, Accelerator
Production (Lead)	N/A	N/A	N/A	N/A	N/A	N/A
Production (Tail)	842	13.2	1.38	6.686	3:39	Class H Cement, Retarder, Dispersant, Salt

Casing String	Top (ft)	Bottom (ft)	% Excess
Surface (Lead)	N/A	N/A	N/A
Surface (Tail)	0	997	100%
Intermediate 1st Stage (Lead)	N/A	N/A	N/A
Intermediate 1st Stage (Tail)	7779	10926	5%
Intermediate 2nd Stage (Lead)	N/A	N/A	N/A
Intermediate 2nd Stage (Tail)	0	7779	10%
Production (Lead)	N/A	N/A	N/A
Production (Tail)	10426	21903	20%

Oxy requests a variance to cement the 9.625" and/or 7.625" intermediate casing strings offline in accordance to the approved variance, EC Tran 461365.

The summarized operational sequence will be as follows:

Oxy USA Inc. - Saker 6_7 Fed Com 35H

1. Run casing as per normal operations. While running casing, conduct negative pressure test and confirm integrity of the float equipment (float collar and shoe).
2. Land casing.
3. Fill pipe with kill weight fluid, and confirm well is static.
 - a. If well is not static notify BLM and kill well.
 - b. Once well is static notify BLM with intent to proceed with nipple down and offline cementing.
4. Set and pressure test annular packoff.
5. After confirmation of both annular barriers and internal barriers, nipple down BOP and install cap flange. If any barrier fails to test, the BOP stack will not be nipped down until after the cement job is completed.
6. Skid rig to next well on pad.
7. Confirm well is static before removing cap flange.
8. If well is not static notify BLM and kill well prior to cementing or nipping up for further remediation.
9. Install offline cement tool.
10. Rig up cement equipment.
 - a. Notify BLM prior to cement job.
11. Perform cement job.
12. Confirm well is static and floats are holding after cement job.
13. Remove cement equipment, offline cement tools and install night cap with pressure gauge for monitoring.

Oxy requests permission to adjust the CBL requirement after bradenhead cement jobs, on 7-5/8" intermediate casings, as per the agreement reached in the OXY/BLM meeting on September 5, 2019.

Three string wells:

- CBL will be required on one well per pad
- If the pumped volume of cement is less than permitted in the APD, BLM will be notified and a CBL may be run
- Echometer will be used after bradenhead cement job to determine TOC before pumping top-out cement

4. Pressure Control Equipment

BOP installed and tested before drilling which hole?	Size?	Min. Required WP	Type	✓	Tested to:
9.875" Hole	13-5/8"	5M	Annular	✓	70% of working pressure
		5M	Blind Ram	✓	250 psi / 5000 psi
			Pipe Ram		
			Double Ram	✓	
			Other*		
6.75" Hole	13-5/8"	5M	Annular	✓	70% of working pressure
		5M	Blind Ram	✓	250 psi / 5000 psi
			Pipe Ram		
			Double Ram	✓	
			Other*		

*Specify if additional ram is utilized.

Oxy will utilize a 5M annular with a 10M BOPE stack. The BOP/BOPE will be tested by an independent service company to 250 psi low and the high pressure indicated above per Onshore Order 2 requirements. The

Oxy USA Inc. - Saker 6_7 Fed Com 35H

System may be upgraded to a higher pressure but still tested to the working pressure listed in the table above. If the system is upgraded all the components installed will be functional and tested.

Pipe rams will be operationally checked each 24 hour period. Blind rams will be operationally checked on each trip out of the hole. These checks will be noted on the daily tour sheets. Other accessories to the BOP equipment will include a Kelly cock and floor safety valve (inside BOP) and choke lines and choke manifold. See attached schematics.

	Formation integrity test will be performed per Onshore Order #2. On Exploratory wells or on that portion of any well approved for a 5M BOPE system or greater, a pressure integrity test of each casing shoe shall be performed. Will be tested in accordance with Onshore Oil and Gas Order #2 III.B.1.i.
	A variance is requested for the use of a flexible choke line from the BOP to Choke Manifold. See attached for specs and hydrostatic test chart.
Y	Are anchors required by manufacturer?
	A multibowl or a unionized multibowl wellhead system will be employed. The wellhead and connection to the BOPE will meet all API 6A requirements. The BOP will be tested per Onshore Order #2 after installation on the surface casing which will cover testing requirements for a maximum of 30 days. If any seal subject to test pressure is broken the system must be tested. We will test the flange connection of the wellhead with a test port that is directly in the flange. We are proposing that we will run the wellhead through the rotary prior to cementing surface casing as discussed with the BLM on October 8, 2015. See attached schematics.

BOP Break Testing Request

Oxy requests permission to adjust the BOP break testing requirements as per the agreement reached in the OXY/BLM meeting on September 5, 2019. A separate sundry will be sent prior to spud that reflects the pad based break testing plan.

BOP break test under the following conditions:

- After a full BOP test is conducted
- When skidding to drill an intermediate section where ICP is set into the third Bone Spring or shallower.
- When skidding to drill a production section that does not penetrate into the third Bone Spring or deeper.

If the kill line is broken prior to skid, two tests will be performed.

- 1) Wellhead flange, co-flex hose, kill line connections and upper pipe rams
- 2) Wellhead flange, HCR valve, check valve, upper pipe rams

If the kill line is not broken prior to skid, only one test will be performed.

- 1) Wellhead flange, co-flex hose, check valve, upper pipe rams

5. Mud Program

Depth		Type	Weight (ppg)	Viscosity	Water Loss
From (ft)	To (ft)				
0	997	Water-Based Mud	8.6-8.8	40-60	N/C
997	10926	Saturated Brine-Based or Oil-Based Mud	8.0-10.0	35-45	N/C
10926	21903	Water-Based or Oil-Based Mud	9.5-12.0	38-50	N/C

Oxy USA Inc. - Saker 6_7 Fed Com 35H

Sufficient mud materials to maintain mud properties and meet minimum lost circulation and weight increase requirements will be kept on location at all times. The following is a general list of products: Barite, Bentonite, Gypsum, Lime, Soda Ash, Caustic Soda, Nut Plug, Cedar Fiber, Cotton Seed Hulls, Drilling Paper, Salt Water Clay, CACL2. Oxy will use a closed mud system.

What will be used to monitor the loss or gain of fluid?	PVT/MD Totco/Visual Monitoring
---	--------------------------------

6. Logging and Testing Procedures

Logging, Coring and Testing.		
Yes	Will run GR from TD to surface (horizontal well – vertical portion of hole). Stated logs run will be in the Completion Report and submitted to the BLM.	
No	Logs are planned based on well control or offset log information.	
No	Drill stem test? If yes, explain	
No	Coring? If yes, explain	
Additional logs planned		Interval
No	Resistivity	
No	Density	
No	CBL	
Yes	Mud log	ICP - TD
No	PEX	

7. Drilling Conditions

Condition	Specify what type and where?
BH Pressure at deepest TVD	7531 psi
Abnormal Temperature	No
BH Temperature at deepest TVD	177°F

Pump high viscosity sweeps as needed for hole cleaning. The mud system will be monitored visually/manually as well as with an electronic PVT. The necessary mud products for additional weight and fluid loss control will be on location at all times. Appropriately weighted mud will be used to isolate potential gas, oil, and water zones until such time as casing can be cemented into place for zonal isolation.

Hydrogen Sulfide (H2S) monitors will be installed prior to drilling out the surface shoe. If H2S is detected in concentrations greater than 100 ppm, the operator will comply with the provisions of Onshore Oil and Gas Order #6. If Hydrogen Sulfide is encountered, measured values and formations will be provided to the BLM.	
N	H2S is present
Y	H2S Plan attached

8. Other facets of operation

	Yes/No
Will the well be drilled with a walking/skidding operation? If yes, describe. <ul style="list-style-type: none"> We plan to drill the four well pad in batch by section: all surface sections, intermediate sections and production sections. The wellhead will be secured with a night cap whenever the rig is not over the well. 	Yes
Will more than one drilling rig be used for drilling operations? If yes, describe. <ul style="list-style-type: none"> Oxy requests the option to contract a Surface Rig to drill, set surface casing, and cement for this well. If the timing between rigs is such that Oxy would 	Yes

Oxy USA Inc. - Saker 6_7 Fed Com 35H

not be able to preset surface, the Primary Rig will MIRU and drill the well in its entirety per the APD. Please see the attached document for information on the spudder rig.	
---	--

Total estimated cuttings volume: 1637.1 bbls.

9. Company Personnel

<u>Name</u>	<u>Title</u>	<u>Office Phone</u>	<u>Mobile Phone</u>
Garrett Granier	Drilling Engineer	713-513-6633	832-265-0581
William Turner	Drilling Engineer Supervisor	713-350-4951	661-817-4586
Simon Benavides	Drilling Superintendent	713-522-8652	281-684-6897
Diego Tellez	Drilling Manager	713-350-4602	713-303-4932



U.S. Department of the Interior
BUREAU OF LAND MANAGEMENT

SUPO Data Report

04/26/2021

APD ID: 10400060027

Submission Date: 08/07/2020

Highlighted data
reflects the most
recent changes

Operator Name: OXY USA INCORPORATED

Well Name: SAKER 6-7 FEDERAL COM

Well Number: 35H

[Show Final Text](#)

Well Type: OIL WELL

Well Work Type: Drill

Section 1 - Existing Roads

Will existing roads be used? YES

Existing Road Map:

Saker6_7FedCom35H_ExistRoads_20200807193800.pdf

Existing Road Purpose: ACCESS,FLUID TRANSPORT

Row(s) Exist? NO

ROW ID(s)

ID:

Do the existing roads need to be improved? NO

Existing Road Improvement Description:

Existing Road Improvement Attachment:

Section 2 - New or Reconstructed Access Roads

Will new roads be needed? YES

New Road Map:

Saker6_7FedCom35H_NewRoads_20200807193824.pdf

New road type: LOCAL

Length: 3609.85 Feet

Width (ft.): 30

Max slope (%): 0

Max grade (%): 0

Army Corp of Engineers (ACOE) permit required? N

ACOE Permit Number(s):

New road travel width: 14

New road access erosion control: Watershed Diversion every 200' if needed.

New road access plan or profile prepared? Y

New road access plan attachment:

Saker6_7FedCom35H_NewRoads_20200807193842.pdf

Access road engineering design? N

Operator Name: OXY USA INCORPORATED**Well Name:** SAKER 6-7 FEDERAL COM**Well Number:** 35H**Access road engineering design attachment:****Turnout?** N**Access surfacing type:** OTHER**Access topsoil source:** ONSITE**Access surfacing type description:** Caliche**Access onsite topsoil source depth:** 0**Offsite topsoil source description:****Onsite topsoil removal process:** If available**Access other construction information:** None**Access miscellaneous information:****Number of access turnouts:****Access turnout map:**

Drainage Control

New road drainage crossing: CULVERT**Drainage Control comments:** Watershed Diversion every 200' if needed.**Road Drainage Control Structures (DCS) description:** Watershed Diversion every 200' if needed.**Road Drainage Control Structures (DCS) attachment:**

Access Additional Attachments

Section 3 - Location of Existing Wells

Existing Wells Map? YES**Attach Well map:**

Saker6_7FedCom35H_ExistWells_20200807194447.pdf

Section 4 - Location of Existing and/or Proposed Production Facilities

Submit or defer a Proposed Production Facilities plan? SUBMIT**Production Facilities description:****Production Facilities map:**

Saker6_7FedCom35H_LeaseFacilityInfo_20200807194541.pdf

Section 5 - Location and Types of Water Supply

Water Source Table

Operator Name: OXY USA INCORPORATED**Well Name:** SAKER 6-7 FEDERAL COM**Well Number:** 35H**Water source type:** GW WELL**Water source use type:** SURFACE CASINGINTERMEDIATE/PRODUCTION
CASING

OTHER

Describe use type: Drilling**Source latitude:****Source longitude:****Source datum:****Water source permit type:** WATER WELL**Water source transport method:** PIPELINE

TRUCKING

Source land ownership: COMMERCIAL**Source transportation land ownership:** COMMERCIAL**Water source volume (barrels):** 2000**Source volume (acre-feet):** 0.25778618**Source volume (gal):** 84000**Water source and transportation map:**

Saker6_7FedCom35H_GRRWtrSrc_20200807194602.pdf

Saker6_7FedCom35H_MesqWtrSrc_20200807194610.pdf

Water source comments: This well will be drilled using a combination of water mud systems. It will be obtained from commercial water stations (Gregory Rockhouse, Mesquite) in the area and will be hauled to location by transport truck using existing and proposed roads.**New water well?** N**New Water Well Info****Well latitude:****Well Longitude:****Well datum:****Well target aquifer:****Est. depth to top of aquifer(ft):****Est thickness of aquifer:****Aquifer comments:****Aquifer documentation:****Well depth (ft):****Well casing type:****Well casing outside diameter (in.):****Well casing inside diameter (in.):****New water well casing?****Used casing source:****Drilling method:****Drill material:**

Operator Name: OXY USA INCORPORATED**Well Name:** SAKER 6-7 FEDERAL COM**Well Number:** 35H**Grout material:****Grout depth:****Casing length (ft.):****Casing top depth (ft.):****Well Production type:****Completion Method:****Water well additional information:****State appropriation permit:****Additional information attachment:**

Section 6 - Construction Materials

Using any construction materials: YES

Construction Materials description: Primary - All caliche utilized for the drilling pad and proposed access road will be obtained from an existing BLM/State/Fee approved pit or from prevailing deposits found on the location. Will use BLM recommended extra caliche from other locations close by for roads, if available. Secondary - The secondary way of obtaining caliche to build locations and roads will be by turning over the location. This means, caliche will be obtained from the actual well site. A caliche permit will be obtained from BLM prior to pushing up any caliche. 2400 cubic yards is max amount of caliche needed for pad and roads. Amount will vary for each pad. The procedure below has been approved by BLM personnel: a. The top 6 of topsoil is pushed off and stockpiled along the side of the location. b. An approximate 120 X 120 area is used within the proposed well site to remove caliche. c. Subsoil is removed and piled alongside the 120 X 120 within the pad site. d. When caliche is found, material will be stockpiled within the pad site to build the location and road. e. Then subsoil is pushed back in the hole and caliche is spread accordingly across entire location and road. f. Once the well is drilled the stockpiled top soil will be used for interim reclamation and spread along areas where caliche is picked up and the location size is reduced. Neither caliche nor subsoil will be stockpiled outside of the well pad. Topsoil will be stockpiled along the edge of the pad. Water will be provided from Mesquite.

Construction Materials source location attachment:

Section 7 - Methods for Handling Waste

Waste type: DRILLING**Waste content description:** Water-Based Cuttings, Water-Based Mud, Oil-Based Cuttings, Oil-Based Mud, Produced Water**Amount of waste:** 1637 barrels**Waste disposal frequency :** Daily**Safe containment description:** Haul-Off Bins**Safe containmant attachment:****Waste disposal type:** HAUL TO COMMERCIAL FACILITY**Disposal location ownership:** COMMERCIAL**Disposal type description:****Disposal location description:** An approved facility that can process drill cuttings, drill fluids, flowback water, produced water, contaminated soils, and other non-hazardous wastes.

Reserve Pit

Reserve Pit being used? NO**Temporary disposal of produced water into reserve pit?** NO**Reserve pit length (ft.)****Reserve pit width (ft.)**

Operator Name: OXY USA INCORPORATED**Well Name:** SAKER 6-7 FEDERAL COM**Well Number:** 35H**Reserve pit depth (ft.)****Reserve pit volume (cu. yd.)****Is at least 50% of the reserve pit in cut?****Reserve pit liner****Reserve pit liner specifications and installation description**

Cuttings Area

Cuttings Area being used? NO**Are you storing cuttings on location?** Y**Description of cuttings location** A closed loop system will be utilized consisting of above ground steel tanks and haul-off bins. Disposal of liquids, drilling fluids and cuttings will be disposed of at an approved facility.**Cuttings area length (ft.)****Cuttings area width (ft.)****Cuttings area depth (ft.)****Cuttings area volume (cu. yd.)****Is at least 50% of the cuttings area in cut?****WCuttings area liner****Cuttings area liner specifications and installation description**

Section 8 - Ancillary Facilities

Are you requesting any Ancillary Facilities?: N**Ancillary Facilities attachment:****Comments:**

Section 9 - Well Site Layout

Well Site Layout Diagram:

Saker6_7FedCom35H_WellSiteCL_20200807194701.pdf

Comments:

Operator Name: OXY USA INCORPORATED**Well Name:** SAKER 6-7 FEDERAL COM**Well Number:** 35H**Section 10 - Plans for Surface Reclamation****Type of disturbance:** New Surface Disturbance**Multiple Well Pad Name:** SAKER 6-7 FEDERAL COM**Multiple Well Pad Number:** 23H, 24H, 91H, 92H, 11H, 12H, 1H, 2H, 3H, 34H, 31H, 35H, 36H**Recontouring attachment:**

Saker6_7FedCom35H_InterimReclamation_10DayLtr_20210120115909.pdf

Drainage/Erosion control construction: Reclamation to be wind rowed as needed to control erosion**Drainage/Erosion control reclamation:** Reclamation to be wind rowed as needed to control erosion

Well pad proposed disturbance (acres): 13.14	Well pad interim reclamation (acres): 2.7	Well pad long term disturbance (acres): 10.45
Road proposed disturbance (acres): 2.49	Road interim reclamation (acres): 1.33	Road long term disturbance (acres): 1.16
Powerline proposed disturbance (acres): 6.73	Powerline interim reclamation (acres): 6.73	Powerline long term disturbance (acres): 0
Pipeline proposed disturbance (acres): 22.19	Pipeline interim reclamation (acres): 10.66	Pipeline long term disturbance (acres): 11.53
Other proposed disturbance (acres): 0	Other interim reclamation (acres): 0	Other long term disturbance (acres): 0
Total proposed disturbance: 44.55	Total interim reclamation: 21.42	Total long term disturbance: 23.14

Disturbance Comments: See Below

Reconstruction method: If the well is deemed commercially productive, caliche from the areas of the pad site not required for operations will be reclaimed. The original topsoil will be returned to the area of the drill pad not necessary to operate the well. These unused areas of the drill pad will be contoured, as close as possible, to match the original topography, and the area will be seeded with an approved BLM mixture to re-establish vegetation. After concluding the drilling and/or completion operations, if the well is found non-commercial, the caliche will be removed from the pad and transported to the original caliche pit or used for other drilling locations. The road will be reclaimed as directed by the BLM. The original topsoil will again be returned to the pad and contoured, as close as possible, to the original topography, and the area will be seeded with an approved BLM mixture to re-establish vegetation.

Topsoil redistribution: The original topsoil will be returned to the area of the drill pad not necessary to operate the well.

Soil treatment: To be determined by the BLM.

Existing Vegetation at the well pad: To be determined by the BLM at Onsite.

Existing Vegetation at the well pad attachment:

Existing Vegetation Community at the road: To be determined by the BLM at Onsite.

Existing Vegetation Community at the road attachment:

Existing Vegetation Community at the pipeline: To be determined by the BLM at Onsite.

Existing Vegetation Community at the pipeline attachment:

Existing Vegetation Community at other disturbances: To be determined by the BLM at Onsite.

Operator Name: OXY USA INCORPORATED**Well Name:** SAKER 6-7 FEDERAL COM**Well Number:** 35H**Existing Vegetation Community at other disturbances attachment:****Non native seed used?** N**Non native seed description:****Seedling transplant description:****Will seedlings be transplanted for this project?** N**Seedling transplant description attachment:****Will seed be harvested for use in site reclamation?** N**Seed harvest description:****Seed harvest description attachment:****Seed Management****Seed Table****Seed Summary****Total pounds/Acre:****Seed Type****Pounds/Acre****Seed reclamation attachment:****Operator Contact/Responsible Official Contact Info****First Name:** JIM**Last Name:** WILSON**Phone:** (575)631-2442**Email:** JIM_WILSON@OXY.COM**Seedbed prep:****Seed BMP:****Seed method:****Existing invasive species?** N**Existing invasive species treatment description:****Existing invasive species treatment attachment:****Weed treatment plan description:** To be determined by the BLM.**Weed treatment plan attachment:****Monitoring plan description:** To be determined by the BLM.**Monitoring plan attachment:**

Operator Name: OXY USA INCORPORATED

Well Name: SAKER 6-7 FEDERAL COM

Well Number: 35H

Success standards: To be determined by the BLM.

Pit closure description: NA

Pit closure attachment:

Section 11 - Surface Ownership

Disturbance type: WELL PAD

Describe:

Surface Owner: OTHER

Other surface owner description: FEE

BIA Local Office:

BOR Local Office:

COE Local Office:

DOD Local Office:

NPS Local Office:

State Local Office:

Military Local Office:

USFWS Local Office:

Other Local Office:

USFS Region:

USFS Forest/Grassland:

USFS Ranger District:

Disturbance type: PIPELINE

Describe:

Surface Owner: BUREAU OF LAND MANAGEMENT, OTHER

Other surface owner description: FEE

BIA Local Office:

BOR Local Office:

COE Local Office:

DOD Local Office:

NPS Local Office:

State Local Office:

Operator Name: OXY USA INCORPORATED

Well Name: SAKER 6-7 FEDERAL COM

Well Number: 35H

Military Local Office:

USFWS Local Office:

Other Local Office:

USFS Region:

USFS Forest/Grassland:

USFS Ranger District:

Disturbance type: OTHER

Describe: Electric Line

Surface Owner: BUREAU OF LAND MANAGEMENT,OTHER

Other surface owner description: FEE

BIA Local Office:

BOR Local Office:

COE Local Office:

DOD Local Office:

NPS Local Office:

State Local Office:

Military Local Office:

USFWS Local Office:

Other Local Office:

USFS Region:

USFS Forest/Grassland:

USFS Ranger District:

Disturbance type: NEW ACCESS ROAD

Describe:

Surface Owner: BUREAU OF LAND MANAGEMENT,OTHER

Other surface owner description: FEE

BIA Local Office:

BOR Local Office:

COE Local Office:

Operator Name: OXY USA INCORPORATED**Well Name:** SAKER 6-7 FEDERAL COM**Well Number:** 35H**DOD Local Office:****NPS Local Office:****State Local Office:****Military Local Office:****USFWS Local Office:****Other Local Office:****USFS Region:****USFS Forest/Grassland:****USFS Ranger District:**

Section 12 - Other Information

Right of Way needed? Y**Use APD as ROW?** Y**ROW Type(s):** 281001 ROW - ROADS,285003 ROW – POWER TRANS,288100 ROW – O&G Pipeline,288101 ROW – O&G Facility Sites,289001 ROW- O&G Well Pad,Other

ROW Applications

SUPO Additional Information: Permian Basin MOA - To be submitted after APD acceptance. GIS shapefiles available for BLM download from shared FTP site after APD submittal.**Use a previously conducted onsite?** N**Previous Onsite information:**

Other SUPO Attachment

Saker6_7FedCom35H_AerialMap_20200807194844.pdf

Saker6_7FedCom35H_GasCapPlan_20200807194856.pdf

Saker6_7FedCom35H_GradingPlan_20200807194905.pdf

Saker6_7FedCom35H_StakeForm_20200807194920.pdf

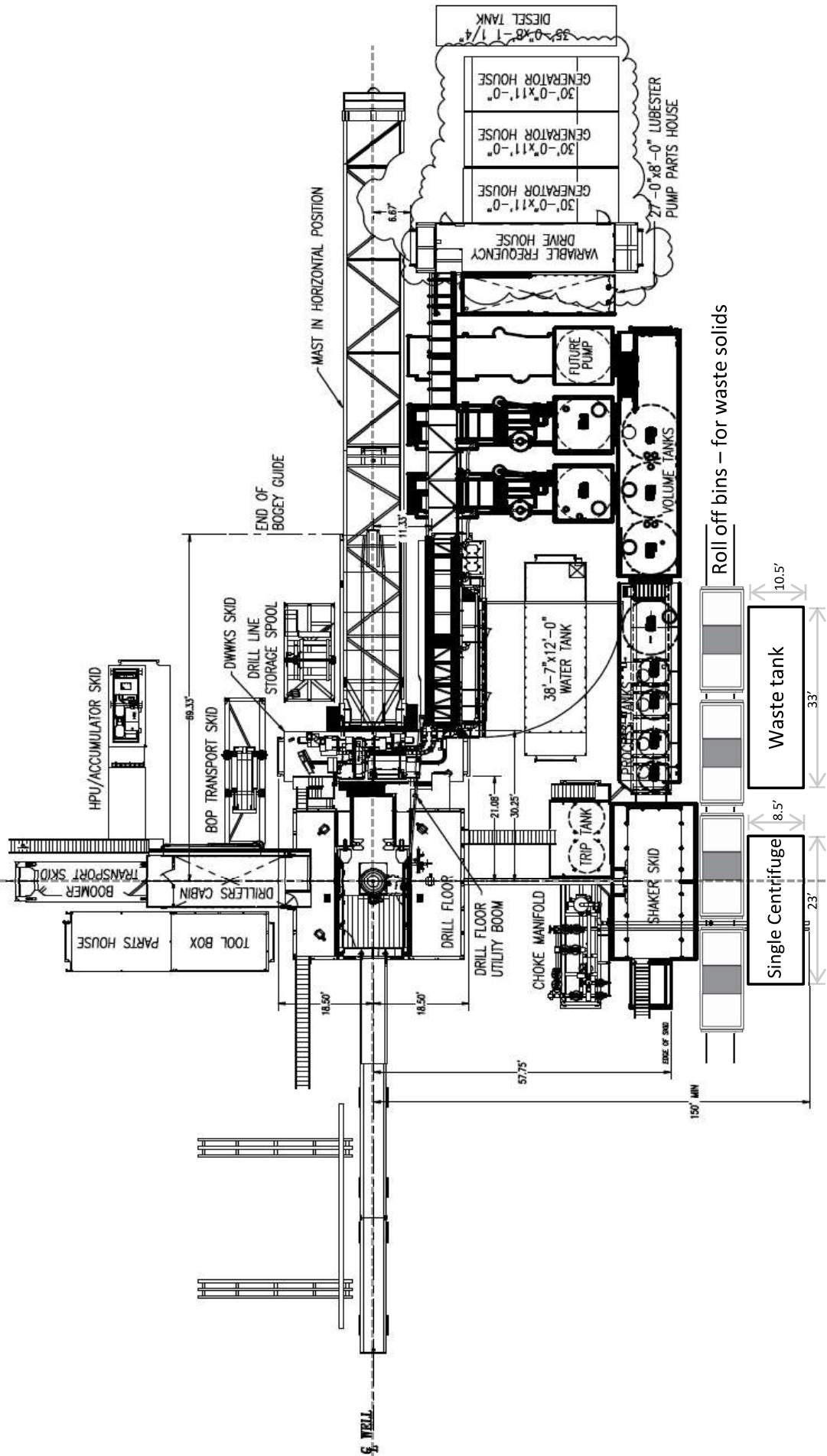
Saker6_7FedCom35H_SUA_20200807194935.pdf

Saker6_7FedCom35H_LVM_20200807195022.pdf

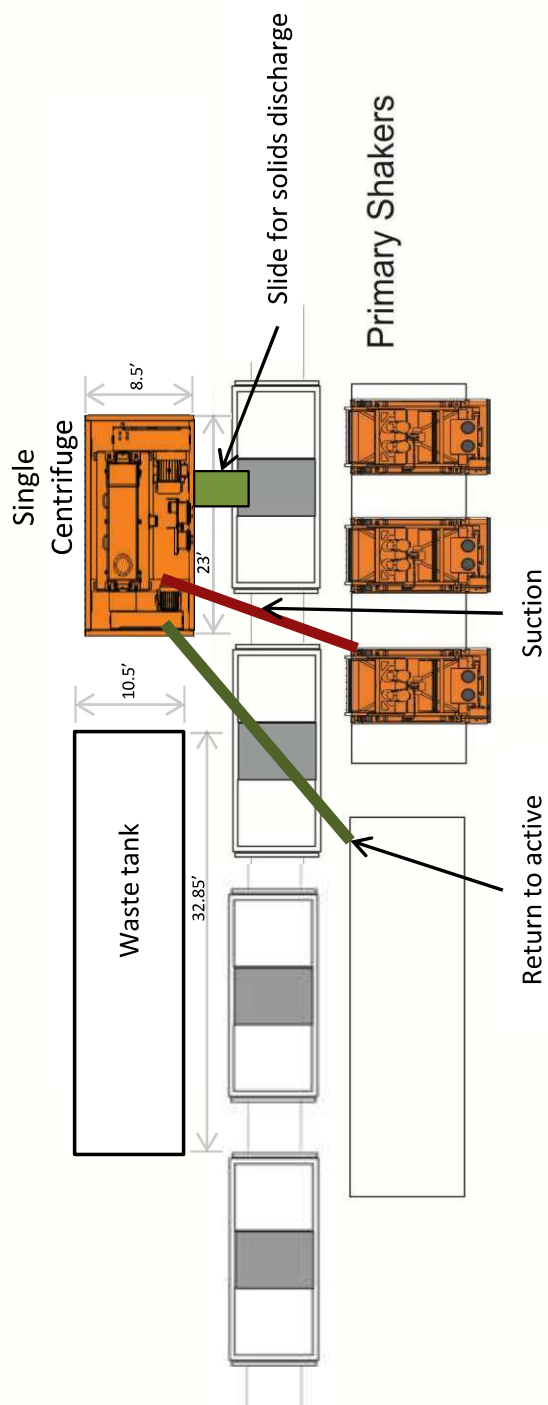
Saker6_7FedCom35H_SUPO_10DayLtr_20210120120048.pdf

Saker6_7FedCom35H_HSU_10DayLtr_20210120120110.pdf

Oxy Single Centrifuge
Closed Loop System – New
Mexico Flex III
May 28, 2013

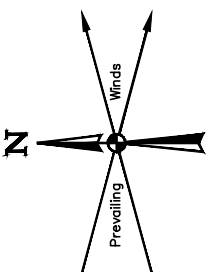


Oxy



Well Head

Oxy Single Centrifuge
Closed Loop System – New
Mexico Flex III
May 28, 2013



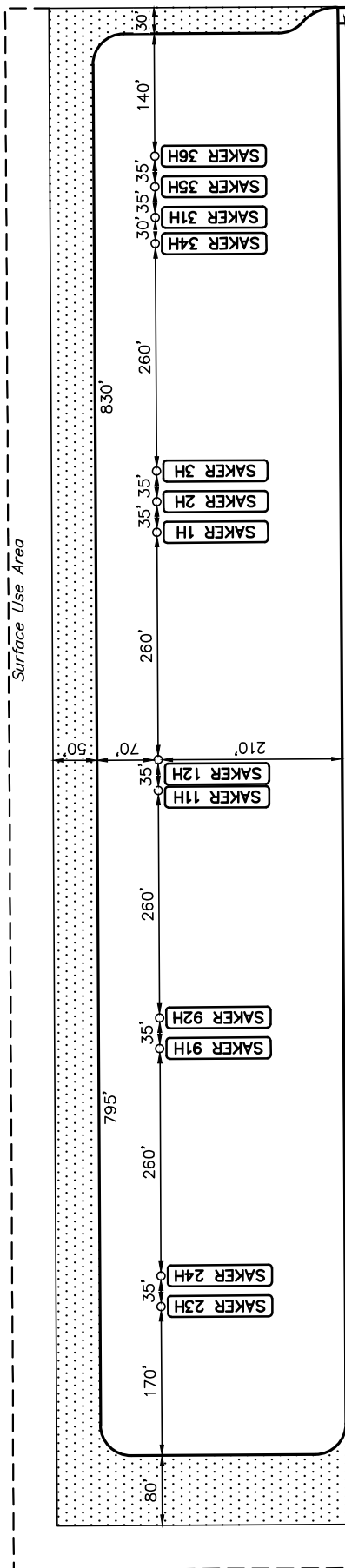
CERTIFICATE
THIS MAP HAS BEEN PRODUCED ACCORDING TO
PROCEDURES THAT HAVE BEEN DEMONSTRATED TO
PRODUCE DATA THAT REFLECTS THE
MINIMUM STANDARDS FOR A TOPOGRAPHIC MAP
COMPILED AT A SCALE OF 1" = 30' WITH A CONTOUR
INTERVAL OF 2'.



Sec. 31,
T23S,
Sec. 6,
R24S

Section Line

Surface Use Area



Access Road

Falcon Ridge
0104 Pad
Access Road

LEGEND:
Reclaimed Area

APPROXIMATE PRODUCTION PAD ACREAGE = +10.452
ACRES APPROXIMATE RECLAIMED AREA ACREAGE = -2.692
ACRES TOTAL ACREAGE = +13.144 ACRES

NOTES:

- Contours shown at 2' intervals.

OXY USA INC.

FALCON RIDGE 0602 PAD
LOTS 3 & 4, SECTION 6, T24S, R35E, N.M.P.M.
LEA COUNTY, NEW MEXICO



UELS, LLC
Corporate Office * 85 South 200 East
Vernal, UT 84078 * (435) 789-1017

SURVEYED BY	C.H., D.C.	12-13-19	SCALE
DRAWN BY	R.J.	12-29-20	1" = 150'
RECLAMATION DIAGRAM			FIGURE #4



U.S. Department of the Interior
BUREAU OF LAND MANAGEMENT

PWD Data Report

04/26/2021

APD ID: 10400060027

Submission Date: 08/07/2020

Operator Name: OXY USA INCORPORATED

Well Name: SAKER 6-7 FEDERAL COM

Well Number: 35H

Well Type: OIL WELL

Well Work Type: Drill

Section 1 - General

Would you like to address long-term produced water disposal? NO

Section 2 - Lined Pits

Would you like to utilize Lined Pit PWD options? N

Produced Water Disposal (PWD) Location:

PWD surface owner:

PWD disturbance (acres):

Lined pit PWD on or off channel:

Lined pit PWD discharge volume (bbl/day):

Lined pit specifications:

Pit liner description:

Pit liner manufacturers information:

Precipitated solids disposal:

Describe precipitated solids disposal:

Precipitated solids disposal permit:

Lined pit precipitated solids disposal schedule:

Lined pit precipitated solids disposal schedule attachment:

Lined pit reclamation description:

Lined pit reclamation attachment:

Leak detection system description:

Leak detection system attachment:

Operator Name: OXY USA INCORPORATED

Well Name: SAKER 6-7 FEDERAL COM

Well Number: 35H

Lined pit Monitor description:

Lined pit Monitor attachment:

Lined pit: do you have a reclamation bond for the pit?

Is the reclamation bond a rider under the BLM bond?

Lined pit bond number:

Lined pit bond amount:

Additional bond information attachment:

Section 3 - Unlined Pits

Would you like to utilize Unlined Pit PWD options? N

Produced Water Disposal (PWD) Location:

PWD disturbance (acres):

PWD surface owner:

Unlined pit PWD on or off channel:

Unlined pit PWD discharge volume (bbl/day):

Unlined pit specifications:

Precipitated solids disposal:

Describe precipitated solids disposal:

Precipitated solids disposal permit:

Unlined pit precipitated solids disposal schedule:

Unlined pit precipitated solids disposal schedule attachment:

Unlined pit reclamation description:

Unlined pit reclamation attachment:

Unlined pit Monitor description:

Unlined pit Monitor attachment:

Do you propose to put the produced water to beneficial use?

Beneficial use user confirmation:

Estimated depth of the shallowest aquifer (feet):

Does the produced water have an annual average Total Dissolved Solids (TDS) concentration equal to or less than that of the existing water to be protected?

TDS lab results:

Geologic and hydrologic evidence:

State authorization:

Unlined Produced Water Pit Estimated percolation:

Unlined pit: do you have a reclamation bond for the pit?

Operator Name: OXY USA INCORPORATED**Well Name:** SAKER 6-7 FEDERAL COM**Well Number:** 35H**Is the reclamation bond a rider under the BLM bond?****Unlined pit bond number:****Unlined pit bond amount:****Additional bond information attachment:**

Section 4 - Injection

Would you like to utilize Injection PWD options? N**Produced Water Disposal (PWD) Location:****PWD surface owner:****PWD disturbance (acres):****Injection PWD discharge volume (bbl/day):****Injection well mineral owner:****Injection well type:****Injection well number:****Injection well name:****Assigned injection well API number?****Injection well API number:****Injection well new surface disturbance (acres):****Minerals protection information:****Mineral protection attachment:****Underground Injection Control (UIC) Permit?****UIC Permit attachment:**

Section 5 - Surface Discharge

Would you like to utilize Surface Discharge PWD options? N**Produced Water Disposal (PWD) Location:****PWD surface owner:****PWD disturbance (acres):****Surface discharge PWD discharge volume (bbl/day):****Surface Discharge NPDES Permit?****Surface Discharge NPDES Permit attachment:****Surface Discharge site facilities information:****Surface discharge site facilities map:**

Section 6 - Other

Would you like to utilize Other PWD options? N**Produced Water Disposal (PWD) Location:****PWD surface owner:****PWD disturbance (acres):****Other PWD discharge volume (bbl/day):**

Operator Name: OXY USA INCORPORATED

Well Name: SAKER 6-7 FEDERAL COM

Well Number: 35H

Other PWD type description:

Other PWD type attachment:

Have other regulatory requirements been met?

Other regulatory requirements attachment:



U.S. Department of the Interior
BUREAU OF LAND MANAGEMENT

Bond Info Data Report

04/26/2021

APD ID: 10400060027

Submission Date: 08/07/2020

Highlighted data
reflects the most
recent changes

Operator Name: OXY USA INCORPORATED

Well Name: SAKER 6-7 FEDERAL COM

Well Number: 35H

[Show Final Text](#)

Well Type: OIL WELL

Well Work Type: Drill

Bond Information

Federal/Indian APD: FED

BLM Bond number: ESB000226

BIA Bond number:

Do you have a reclamation bond? NO

Is the reclamation bond a rider under the BLM bond?

Is the reclamation bond BLM or Forest Service?

BLM reclamation bond number:

Forest Service reclamation bond number:

Forest Service reclamation bond attachment:

Reclamation bond number:

Reclamation bond amount:

Reclamation bond rider amount:

Additional reclamation bond information attachment:

District I
1625 N. French Dr., Hobbs, NM 88240
Phone: (575) 393-6161 Fax: (575) 393-0720

District II
811 S. First St., Artesia, NM 88210
Phone: (575) 748-1283 Fax: (575) 748-9720

District III
1000 Rio Brazos Road, Aztec, NM 87410
Phone: (505) 334-6178 Fax: (505) 334-6170

District IV
1220 S. St. Francis Dr., Santa Fe, NM 87505
Phone: (505) 476-3460 Fax: (505) 476-3462

State of New Mexico
Energy, Minerals & Natural Resources Department
OIL CONSERVATION DIVISION
1220 South St. Francis Dr.
Santa Fe, NM 87505

Form C-102
Revised August 1, 2011
Submit one copy to appropriate
District Office

AMENDED REPORT

WELL LOCATION AND ACREAGE DEDICATION PLAT

30-025-	¹ PO Number 30-025-48936	98265	² Pool Code 2220	³ Pool Name OJO CHISO; WOLCAMP SOUTHWEST
⁴ Property Code 330848	⁵ Property Name SAKER 6_7 FED COM			⁶ Well Number 35H
⁷ OGRID No. 16696	⁸ Operator Name OXY USA INC.			⁹ Elevation 3449.7' (NAVD 88)

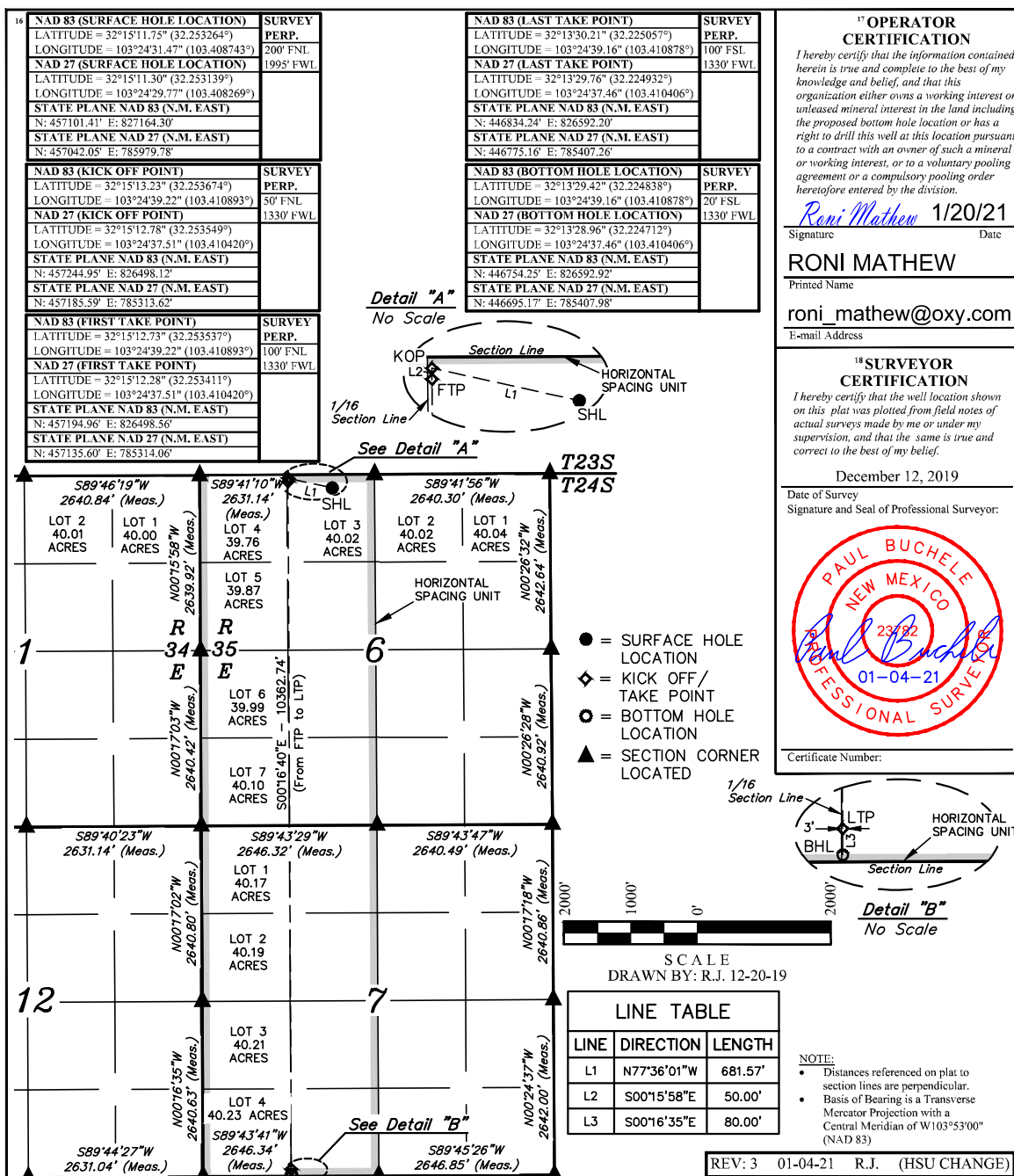
¹⁰Surface Location

UL or lot no. 3	Section 6	Township 24S	Range 35E	Lot Idn	Feet from the 200	North/South line NORTH	Feet from the 1995	East/West line WEST	County LEA
--------------------	--------------	-----------------	--------------	---------	----------------------	---------------------------	-----------------------	------------------------	---------------

¹¹ Bottom Hole Location If Different From Surface

UL or lot no. N	Section 7	Township 24S	Range 35E	Lot Idn	Feet from the 20	North/South line SOUTH	Feet from the 1330	East/West line WEST	County LEA
¹² Dedicated Acres 640.54	¹³ Joint or Infill	¹⁴ Consolidation Code			¹⁵ Order No.				

No allowable will be assigned to this completion until all interests have been consolidated or a non-standard unit has been approved by the division.



District I
1625 N. French Dr., Hobbs, NM 88240
District II
811 S. First St., Artesia, NM 88210
District III
1000 Rio Brazos Road, Aztec, NM 87410
District IV
1220 S. St. Francis Dr., Santa Fe, NM 87505

State of New Mexico
Energy, Minerals and Natural Resources Department
Oil Conservation Division
1220 South St. Francis Dr.
Santa Fe, NM 87505

Submit Original
to Appropriate
District Office

GAS CAPTURE PLAN

Date: 07-13-2020

☒ Original

Operator & OGRID No.: OXY USA INC. - 16696

☐ Amended - Reason for Amendment: _____

This Gas Capture Plan outlines actions to be taken by the Operator to reduce well/production facility flaring/venting for new completion (new drill, recomple to new zone, re-frac) activity.

Note: Form C-129 must be submitted and approved prior to exceeding 60 days allowed by Rule (Subsection A of 19.15.18.12 NMAC).

Well(s)/Production Facility – Name of facility

The well(s) that will be located at the production facility are shown in the table below.

Well Name	API	Well Location (ULSTR)	Footages	Expected MCF/D	Flared or Vented	Comments
SAKER 6_7 FED COM 1H	Pending	Lot 3-Sec. 6-T24SR-35E	200'FNL 1600'FWL	3,500	0	
SAKER 6_7 FED COM 2H	Pending	Lot 3-Sec. 6-T24SR-35E	200'FNL 1635'FWL	3,500	0	
SAKER 6_7 FED COM 3H	Pending	Lot 3-Sec. 6-T24SR-35E	200'FNL 1670'FWL	3,500	0	
SAKER 6_7 FED COM 4H	Pending	Lot 1-Sec. 6-T24SR-35E	180'FNL 590' FEL	3,500	0	
SAKER 6_7 FED COM 5H	Pending	Lot 1-Sec. 6-T24SR-35E	180'FNL 555' FEL	3,500	0	
SAKER 6_7 FED COM 6H	Pending	Lot 1-Sec. 6-T24SR-35E	180'FNL 520' FEL	3,500	0	
SAKER 6_7 FED COM 11H	Pending	Lot 4-Sec. 6-T24S-R35E	200'FNL 1305' FWL	2,100	0	
SAKER 6_7 FED COM 12H	Pending	Lot 3-Sec. 6-T24S-R35E	200'FNL 1340' FWL	2,100	0	
SAKER 6_7 FED COM 13H	Pending	Lot 2-Sec. 6-T24S-R35E	710' FNL 1393'FEL	2,100	0	
SAKER 6_7 FED COM 14H	Pending	Lot 2-Sec. 6-T24S-R35E	710' FNL 1358'FEL	2,100	0	
SAKER 6_7 FED COM 23H	Pending	Lot 4-Sec. 6-T24S-R35E	200' FNL 715' FWL	1,500	0	
SAKER 6_7 FED COM 24H	Pending	Lot 4-Sec. 6-T24S-R35E	200' FNL 750' FWL	1,500	0	
SAKER 6_7 FED COM 31H	Pending	Lot 3-Sec. 6-T24S-R35E	200' FNL 1960' FWL	2,600	0	
SAKER 6_7 FED COM 32H	Pending	Lot 1-Sec. 6-T24S-R35E	180' FNL 950' FEL	2,600	0	
SAKER 6_7 FED COM 33H	Pending	Lot 1-Sec. 6-T24S-R35E	180' FNL 885' FEL	2,600	0	
SAKER 6_7 FED COM 34H	Pending	Lot 3-Sec. 6-T24S-R35E	200' FNL 1930' FWL	2,600	0	

SAKER 6_7 FED COM 35H 30-025-48936	Pending	Lot 3-Sec. 6-T24S-R35E	200' FNL 1995' FWL	2,600	0	
SAKER 6_7 FED COM 36H	Pending	Lot 3-Sec. 6-T24S-R35E	200' FNL 2030' FWL	2,600	0	
SAKER 6_7 FED COM 37H	Pending	Lot 1-Sec. 6-T24S-R35E	180' FNL 920' FEL	2,600	0	
SAKER 6_7 FED COM 38H	Pending	Lot 1-Sec. 6-T24S-R35E	180' FNL 850' FEL	2,600	0	

Gathering System and Pipeline Notification

Well(s) will be connected to a production facility after flowback operations are complete, where a gas transporter system is in place. The gas produced from production facility is dedicated to Targa Resources ("Targa") and is connected to Targa low/high pressure gathering system located in Lea County, New Mexico. OXY USA INC. ("OXY") provides (periodically) to Targa a drilling, completion and estimated first production date for wells that are scheduled to be drilled in the foreseeable future. In addition, OXY and Targa have periodic conference calls to discuss changes to drilling and completion schedules. Gas from these wells will be processed at the Eunice Processing Plant located in Sec. 3, Twn. 22S, Rng. 37E, Lea County, New Mexico. The actual flow of the gas will be based on compression operating parameters and gathering system pressures.

Flowback Strategy

After the fracture treatment/completion operations, well(s) will be produced to temporary production tanks and gas will be flared or vented. During flowback, the fluids and sand content will be monitored. When the produced fluids contain minimal sand, the wells will be turned to production facilities. Gas sales should start as soon as the wells start flowing through the production facilities, unless there are operational issues on Targa system at that time. Based on current information, it is OXY's belief the system can take this gas upon completion of the well(s).

Safety requirements during cleanout operations from the use of underbalanced air cleanout systems may necessitate that sand and non-pipeline quality gas be vented and/or flared rather than sold on a temporary basis.

Alternatives to Reduce Flaring

Below are alternatives considered from a conceptual standpoint to reduce the amount of gas flared.

- Power Generation – On lease
 - Only a portion of gas is consumed operating the generator, remainder of gas will be flared
- Compressed Natural Gas – On lease
 - Gas flared would be minimal, but might be uneconomical to operate when gas volume declines
- NGL Removal – On lease
 - Plants are expensive, residue gas is still flared, and uneconomical to operate when gas volume declines

District I

1625 N. French Dr., Hobbs, NM 88240
 Phone:(575) 393-6161 Fax:(575) 393-0720

District II

811 S. First St., Artesia, NM 88210
 Phone:(575) 748-1283 Fax:(575) 748-9720

District III

1000 Rio Brazos Rd., Aztec, NM 87410
 Phone:(505) 334-6178 Fax:(505) 334-6170

District IV

1220 S. St Francis Dr., Santa Fe, NM 87505
 Phone:(505) 476-3470 Fax:(505) 476-3462

State of New Mexico
Energy, Minerals and Natural Resources
Oil Conservation Division
1220 S. St Francis Dr.
Santa Fe, NM 87505

CONDITIONS

Action 25498

CONDITIONS

Operator: OXY USA INC P.O. Box 4294 Houston, TX 772104294	OGRID: 16696
	Action Number: 25498
	Action Type: [C-101] BLM - Federal/Indian Land Lease (Form 3160-3)

CONDITIONS

Created By	Condition	Condition Date
pkautz	Will require a File As Drilled C-102 and a Directional Survey with the C-104	5/28/2021
pkautz	Once the well is spud, to prevent ground water contamination through whole or partial conduits from the surface, the operator shall drill without interruption through the fresh water zone or zones and shall immediately set in cement the water protection string	5/28/2021