

Form 3160-3
(June 2015)UNITED STATES
DEPARTMENT OF THE INTERIOR
BUREAU OF LAND MANAGEMENT

APPLICATION FOR PERMIT TO DRILL OR REENTER

FORM APPROVED
OMB No. 1004-0137
Expires: January 31, 2018

1a. Type of work: <input checked="" type="checkbox"/> DRILL <input type="checkbox"/> REENTER		5. Lease Serial No. NMNM014492
1b. Type of Well: <input checked="" type="checkbox"/> Oil Well <input type="checkbox"/> Gas Well <input type="checkbox"/> Other		6. If Indian, Allottee or Tribe Name
1c. Type of Completion: <input type="checkbox"/> Hydraulic Fracturing <input checked="" type="checkbox"/> Single Zone <input type="checkbox"/> Multiple Zone		7. If Unit or CA Agreement, Name and No.
2. Name of Operator BTA OIL PRODUCERS LLC [260297]		8. Lease Name and Well No. MESA 8105 1-12 FEDERAL [327174] 56H
3a. Address 104 SOUTH PECOS STREET, MIDLAND, TX 79701	3b. Phone No. (include area code) (432) 682-3753	9. API Well No. 30-025-48960
4. Location of Well (Report location clearly and in accordance with any State requirements. *) At surface NWNW / 280 FNL / 760 FWL / LAT 32.07896 / LONG -103.634871 At proposed prod. zone SWSW / 50 FSL / 990 FWL / LAT 32.050459 / LONG -103.633804		10. Field and Pool, or Exploratory WC-025/Wolfcamp Sand [98158] 11. Sec., T. R. M. or Blk. and Survey or Area SEC 1/T26S/R32E/NMP
14. Distance in miles and direction from nearest town or post office*		12. County or Parish LEA
15. Distance from proposed* location to nearest property or lease line, ft. (Also to nearest drig. unit line, if any) 280 feet		13. State NM
16. No of acres in lease		17. Spacing Unit dedicated to this well 320.0
18. Distance from proposed location* to nearest well, drilling, completed, applied for, on this lease, ft. 757 feet		20. BLM/BIA Bond No. in file FED: NMB001711
21. Elevations (Show whether DF, KDB, RT, GL, etc.) 3335 feet		22. Approximate date work will start* 11/05/2021
		23. Estimated duration 30 days
24. Attachments		

The following, completed in accordance with the requirements of Onshore Oil and Gas Order No. 1, and the Hydraulic Fracturing rule per 43 CFR 3162.3-3 (as applicable)

- | | |
|--|---|
| 1. Well plat certified by a registered surveyor. | 4. Bond to cover the operations unless covered by an existing bond on file (see Item 20 above). |
| 2. A Drilling Plan. | 5. Operator certification. |
| 3. A Surface Use Plan (if the location is on National Forest System Lands, the SUPO must be filed with the appropriate Forest Service Office). | 6. Such other site specific information and/or plans as may be requested by the BLM. |

25. Signature (Electronic Submission)	Name (Printed/Typed) SAMMY HAJAR / Ph: (432) 682-3753	Date 06/04/2020
Title Regulatory Analyst		
Approved by (Signature) (Electronic Submission)	Name (Printed/Typed) Cody Layton / Ph: (575) 234-5959	Date 04/12/2021
Title Assistant Field Manager Lands & Minerals		
Office Carlsbad Field Office		

Application approval does not warrant or certify that the applicant holds legal or equitable title to those rights in the subject lease which would entitle the applicant to conduct operations thereon.

Conditions of approval, if any, are attached.

Title 18 U.S.C. Section 1001 and Title 43 U.S.C. Section 1212, make it a crime for any person knowingly and willfully to make to any department or agency of the United States any false, fictitious or fraudulent statements or representations as to any matter within its jurisdiction.

GCP Rec 04/27/2021

SL

(Continued on page 2)

KZ
06/02/2021

*(Instructions on page 2)

PECOS DISTRICT DRILLING CONDITIONS OF APPROVAL

OPERATOR'S NAME:	BTA Oil Producers LLC
LEASE NO.:	NMNM014492
WELL NAME & NO.:	MESA 8105 1-12 Federal 56H
SURFACE HOLE FOOTAGE:	280'N & 760'W
BOTTOM HOLE FOOTAGE:	50'S & 990'W
LOCATION:	Section 1, T.26 S., R.32 E., NMP
COUNTY:	Lea County, New Mexico

COA

H2S	<input type="radio"/> Yes	<input checked="" type="radio"/> No	
Potash	<input checked="" type="radio"/> None	<input type="radio"/> Secretary	<input type="radio"/> R-111-P
Cave/Karst Potential	<input type="radio"/> Low	<input checked="" type="radio"/> Medium	<input type="radio"/> High
Cave/Karst Potential	<input type="radio"/> Critical		
Variance	<input type="radio"/> None	<input checked="" type="radio"/> Flex Hose	<input type="radio"/> Other
Wellhead	<input type="radio"/> Conventional	<input checked="" type="radio"/> Multibowl	<input type="radio"/> Both
Other	<input type="checkbox"/> 4 String Area	<input type="checkbox"/> Capitan Reef	<input type="checkbox"/> WIPP
Other	<input type="checkbox"/> Fluid Filled	<input type="checkbox"/> Cement Squeeze	<input type="checkbox"/> Pilot Hole
Special Requirements	<input type="checkbox"/> Water Disposal	<input type="checkbox"/> COM	<input type="checkbox"/> Unit

A. HYDROGEN SULFIDE

Hydrogen Sulfide (H2S) monitors shall be installed prior to drilling out the surface shoe. If H2S is detected in concentrations greater than 100 ppm, the Hydrogen Sulfide area shall meet Onshore Order 6 requirements, which includes equipment and personnel/public protection items. If Hydrogen Sulfide is encountered, provide measured values and formations to the BLM.

B. CASING

Casing Design:

1. The **10-3/4** inch surface casing shall be set at approximately **860 feet** (a minimum of **25 feet (Lea County)** into the Rustler Anhydrite and above the salt) and cemented to the surface.
 - a. If cement does not circulate to the surface, the appropriate BLM office shall be notified and a temperature survey utilizing an electronic type temperature survey with surface log readout will be used or a cement bond log shall be run to verify the top of the cement. Temperature survey will be run a minimum of six hours after pumping cement and ideally between 8-10 hours after

completing the cement job.

- b. Wait on cement (WOC) time for a primary cement job will be a minimum of **8 hours** or 500 pounds compressive strength, whichever is greater. (This is to include the lead cement)
- c. Wait on cement (WOC) time for a remedial job will be a minimum of 4 hours after bringing cement to surface or 500 pounds compressive strength, whichever is greater.
- d. If cement falls back, remedial cementing will be done prior to drilling out that string.

Excess cement calculates to 16%, additional cement might be required.

2. The 7-5/8 inch intermediate casing shall be set at approximately **11,779** feet. The minimum required fill of cement behind the 7-5/8 inch intermediate casing is:

Option 1 (Single Stage):

- Cement to surface. If cement does not circulate see B.1.a, c-d above. **Wait on cement (WOC) time for a primary cement job is to include the lead cement slurry due to cave/karst or potash.**
Excess cement calculates to -46%, additional cement might be required.

Option 2:

Operator has proposed a DV tool, the depth may be adjusted as long as the cement is changed proportionally. The DV tool may be cancelled if cement circulates to surface on the first stage.

- a. First stage to DV tool: Cement to circulate. If cement does not circulate off the DV tool, contact the appropriate BLM office before proceeding with second stage cement job.
Excess cement calculates to -7%, additional cement might be required.
 - b. Second stage above DV tool:
 - Cement to surface. If cement does not circulate, contact the appropriate BLM office.
Wait on cement (WOC) time for a primary cement job is to include the lead cement slurry due to cave/karst or potash.
- ❖ In Medium Cave/Karst Areas if cement does not circulate to surface on the first two casing strings, the cement on the 3rd casing string must come to surface.

3. The minimum required fill of cement behind the **5 1/2 X 5 inch** production casing is:
 - Cement should tie-back at least **200 feet** into previous casing string. Operator shall provide method of verification.

C. PRESSURE CONTROL

1. Variance approved to use flex line from BOP to choke manifold. Manufacturer's specification to be readily available. No external damage to flex line. Flex line to be installed as straight as possible (no hard bends).^{*}
2. Operator has proposed a multi-bowl wellhead assembly. This assembly will only be tested when installed on the surface casing. Minimum working pressure of the blowout preventer (BOP) and related equipment (BOPE) required for drilling below the surface casing shoe shall be **10,000 (10M) psi. Variance is approved to use a 5000 (5M) Annular which shall be tested to 5000 (5M) psi.**
 - a. Wellhead shall be installed by manufacturer's representatives, submit documentation with subsequent sundry.
 - b. If the welding is performed by a third party, the manufacturer's representative shall monitor the temperature to verify that it does not exceed the maximum temperature of the seal.
 - c. Manufacturer representative shall install the test plug for the initial BOP test.
 - d. If the cement does not circulate and one inch operations would have been possible with a standard wellhead, the well head shall be cut off, cementing operations performed and another wellhead installed.
 - e. Whenever any seal subject to test pressure is broken, all the tests in OOGO2.III.A.2.i must be followed.

GENERAL REQUIREMENTS

The BLM is to be notified in advance for a representative to witness:

- a. Spudding well (minimum of 24 hours)
- b. Setting and/or Cementing of all casing strings (minimum of 4 hours)
- c. BOPE tests (minimum of 4 hours)

☒ Chaves and Roosevelt Counties
Call the Roswell Field Office, 2909 West Second St., Roswell NM 88201.
During office hours call (575) 627-0272.
After office hours call (575)

☒ Eddy County

Call the Carlsbad Field Office, 620 East Greene St., Carlsbad, NM 88220,
(575) 361-2822

☒ Lea County

Call the Hobbs Field Station, 414 West Taylor, Hobbs NM 88240, (575)
393-3612

1. Unless the production casing has been run and cemented or the well has been properly plugged, the drilling rig shall not be removed from over the hole without prior approval.
 - a. In the event the operator has proposed to drill multiple wells utilizing a skid/walking rig. Operator shall secure the wellbore on the current well, after installing and testing the wellhead, by installing a blind flange of like pressure rating to the wellhead and a pressure gauge that can be monitored while drilling is performed on the other well(s).
 - b. When the operator proposes to set surface casing with Spudder Rig
 - Notify the BLM when moving in and removing the Spudder Rig.
 - Notify the BLM when moving in the 2nd Rig. Rig to be moved in within 90 days of notification that Spudder Rig has left the location.
 - BOP/BOPE test to be conducted per Onshore Oil and Gas Order No. 2 as soon as 2nd Rig is rigged up on well.
2. Floor controls are required for 3M or Greater systems. These controls will be on the rig floor, unobstructed, readily accessible to the driller and will be operational at all times during drilling and/or completion activities. Rig floor is defined as the area immediately around the rotary table; the area immediately above the substructure on which the draw works are located, this does not include the dog house or stairway area.
3. The record of the drilling rate along with the GR/N well log run from TD to surface (horizontal well – vertical portion of hole) shall be submitted to the BLM office as well as all other logs run on the borehole 30 days from completion. If available, a digital copy of the logs is to be submitted in addition to the paper copies. The Rustler top and top and bottom of Salt are to be recorded on the Completion Report.

A. CASING

1. Changes to the approved APD casing program need prior approval if the items substituted are of lesser grade or different casing size or are Non-API. The Operator can exchange the components of the proposal with that of superior strength (i.e. changing from J-55 to N-80, or from 36# to 40#). Changes to the approved cement program need prior approval if the altered cement plan has less volume or strength or if the changes are substantial (i.e. Multistage tool, ECP, etc.). The initial wellhead installed on the well will remain on the well with spools used as needed.

2. Wait on cement (WOC) for Potash Areas: After cementing but before commencing any tests, the casing string shall stand cemented under pressure until both of the following conditions have been met: 1) cement reaches a minimum compressive strength of 500 psi for all cement blends, 2) until cement has been in place at least 24 hours. WOC time will be recorded in the driller's log.
3. Wait on cement (WOC) for Water Basin: After cementing but before commencing any tests, the casing string shall stand cemented under pressure until both of the following conditions have been met: 1) cement reaches a minimum compressive strength of 500 psi at the shoe, 2) until cement has been in place at least 8 hours. WOC time will be recorded in the driller's log. See individual casing strings for details regarding lead cement slurry requirements.
4. Provide compressive strengths including hours to reach required 500 pounds compressive strength prior to cementing each casing string. Have well specific cement details onsite prior to pumping the cement for each casing string.
5. No pea gravel permitted for remedial or fall back remedial without prior authorization from the BLM engineer.
6. On that portion of any well approved for a 5M BOPE system or greater, a pressure integrity test of each casing shoe shall be performed. Formation at the shoe shall be tested to a minimum of the mud weight equivalent anticipated to control the formation pressure to the next casing depth or at total depth of the well. This test shall be performed before drilling more than 20 feet of new hole.
7. If hardband drill pipe is rotated inside casing, returns will be monitored for metal. If metal is found in samples, drill pipe will be pulled and rubber protectors which have a larger diameter than the tool joints of the drill pipe will be installed prior to continuing drilling operations.
8. Whenever a casing string is cemented in the R-111-P potash area, the NMOCD requirements shall be followed.

B. PRESSURE CONTROL

1. All blowout preventer (BOP) and related equipment (BOPE) shall comply with well control requirements as described in Onshore Oil and Gas Order No. 2 and API RP 53 Sec. 17.
2. If a variance is approved for a flexible hose to be installed from the BOP to the choke manifold, the following requirements apply: Check condition of flexible line from BOP to choke manifold, replace if exterior is damaged or if line fails test. Line to be as straight as possible with no hard bends and is to be anchored according to Manufacturer's requirements. The flexible hose can be exchanged with a hose of equal size and equal or greater pressure rating. Anchor requirements, specification sheet and hydrostatic pressure test certification matching the hose in service, to be

onsite for review. These documents shall be posted in the company man's trailer and on the rig floor.

3. 5M or higher system requires an HCR valve, remote kill line and annular to match. The remote kill line is to be installed prior to testing the system and tested to stack pressure.
4. If the operator has proposed a multi-bowl wellhead assembly in the APD. The following requirements must be met:
 - a. Wellhead shall be installed by manufacturer's representatives, submit documentation with subsequent sundry.
 - b. If the welding is performed by a third party, the manufacturer's representative shall monitor the temperature to verify that it does not exceed the maximum temperature of the seal.
 - c. Manufacturer representative shall install the test plug for the initial BOP test.
 - d. Whenever any seal subject to test pressure is broken, all the tests in OOGO2.III.A.2.i must be followed.
 - e. If the cement does not circulate and one inch operations would have been possible with a standard wellhead, the well head shall be cut off, cementing operations performed and another wellhead installed.
5. The appropriate BLM office shall be notified a minimum of 4 hours in advance for a representative to witness the tests.
 - a. In a water basin, for all casing strings utilizing slips, these are to be set as soon as the crew and rig are ready and any fallback cement remediation has been done. The casing cut-off and BOP installation can be initiated four hours after installing the slips, which will be approximately six hours after bumping the plug. For those casing strings not using slips, the minimum wait time before cut-off is eight hours after bumping the plug. BOP/BOPE testing can begin after cut-off or once cement reaches 500 psi compressive strength (including lead when specified), whichever is greater. However, if the float does not hold, cut-off cannot be initiated until cement reaches 500 psi compressive strength (including lead when specified).
 - b. In potash areas, for all casing strings utilizing slips, these are to be set as soon as the crew and rig are ready and any fallback cement remediation has been done. For all casing strings, casing cut-off and BOP installation can be initiated at twelve hours after bumping the plug. However, **no tests** shall commence until the cement has had a minimum of 24 hours setup time.
 - c. The tests shall be done by an independent service company utilizing a test plug not a cup or J-packer. The operator also has the option of utilizing an independent tester to test without a plug (i.e. against the casing) pursuant to

Onshore Order 2 with the pressure not to exceed 70% of the burst rating for the casing. Any test against the casing must meet the WOC time for water basin (8 hours) or potash (24 hours) or 500 pounds compressive strength, whichever is greater, prior to initiating the test (see casing segment as lead cement may be critical item).

- d. The test shall be run on a 5000 psi chart for a 2-3M BOP/BOP, on a 10000 psi chart for a 5M BOP/BOPE and on a 15000 psi chart for a 10M BOP/BOPE. If a linear chart is used, it shall be a one hour chart. A circular chart shall have a maximum 2 hour clock. If a twelve hour or twenty-four hour chart is used, tester shall make a notation that it is run with a two hour clock.
- e. The results of the test shall be reported to the appropriate BLM office.
- f. All tests are required to be recorded on a calibrated test chart. A copy of the BOP/BOPE test chart and a copy of independent service company test will be submitted to the appropriate BLM office.
- g. The BOP/BOPE test shall include a low pressure test from 250 to 300 psi. The test will be held for a minimum of 10 minutes if test is done with a test plug and 30 minutes without a test plug. This test shall be performed prior to the test at full stack pressure.
- h. BOP/BOPE must be tested by an independent service company within 500 feet of the top of the Wolfcamp formation if the time between the setting of the intermediate casing and reaching this depth exceeds 20 days. This test does not exclude the test prior to drilling out the casing shoe as per Onshore Order No. 2.

C. DRILLING MUD

Mud system monitoring equipment, with derrick floor indicators and visual and audio alarms, shall be operating before drilling into the Wolfcamp formation, and shall be used until production casing is run and cemented.

D. WASTE MATERIAL AND FLUIDS

All waste (i.e. drilling fluids, trash, salts, chemicals, sewage, gray water, etc.) created as a result of drilling operations and completion operations shall be safely contained and disposed of properly at a waste disposal facility. No waste material or fluid shall be disposed of on the well location or surrounding area.

Porto-johns and trash containers will be on-location during fracturing operations or any other crew-intensive operations.

OTA11032020



U.S. Department of the Interior
BUREAU OF LAND MANAGEMENT

Application Data Report

04/16/2021

APD ID: 10400057683

Submission Date: 06/04/2020

Highlighted data
reflects the most
recent changes

Operator Name: BTA OIL PRODUCERS LLC

Well Name: MESA 8105 1-12 FEDERAL

Well Number: 56H

[Show Final Text](#)

Well Type: OIL WELL

Well Work Type: Drill

Section 1 - General

APD ID: 10400057683

Tie to previous NOS?

Submission Date: 06/04/2020

BLM Office: CARLSBAD

User: Sammy Hajar

Title: Regulatory Analyst

Federal/Indian APD: FED

Is the first lease penetrated for production Federal or Indian? FED

Lease number: NMNM014492

Lease Acres:

Surface access agreement in place?

Allotted?

Reservation:

Agreement in place? NO

Federal or Indian agreement:

Agreement number:

Agreement name:

Keep application confidential? Y

Permitting Agent? NO

APD Operator: BTA OIL PRODUCERS LLC

Operator letter of designation:

Operator Info

Operator Organization Name: BTA OIL PRODUCERS LLC

Operator Address: 104 S. Pecos

Zip: 79701

Operator PO Box:

Operator City: Midland

State: TX

Operator Phone: (432)682-3753

Operator Internet Address:

Section 2 - Well Information

Well in Master Development Plan? NO

Master Development Plan name:

Well in Master SUPO? NO

Master SUPO name:

Well in Master Drilling Plan? NO

Master Drilling Plan name:

Well Name: MESA 8105 1-12 FEDERAL

Well Number: 56H

Well API Number:

Field/Pool or Exploratory? Field and Pool

Field Name: WC-025

Pool Name: Wolfcamp Sand

Is the proposed well in an area containing other mineral resources? NONE

Operator Name: BTA OIL PRODUCERS LLC

Well Name: MESA 8105 1-12 FEDERAL

Well Number: 56H

Is the proposed well in an area containing other mineral resources? NONE

Is the proposed well in a Helium production area? N

Use Existing Well Pad? N

New surface disturbance?

Type of Well Pad: MULTIPLE WELL

Multiple Well Pad Name: MESA Number: 56H and 57H

8105 1-12 FEDERAL

Well Class: HORIZONTAL

Number of Legs: 1

Well Work Type: Drill

Well Type: OIL WELL

Describe Well Type:

Well sub-Type: INFILL

Describe sub-type:

Distance to town:

Distance to nearest well: 757 FT

Distance to lease line: 280 FT

Reservoir well spacing assigned acres Measurement: 320 Acres

Well plat: Signed_Mesa_8105_1_12_Federal_56H_C102_20200806123326.pdf

Well work start Date: 11/05/2021

Duration: 30 DAYS

Section 3 - Well Location Table

Survey Type: RECTANGULAR

Describe Survey Type:

Datum: NAD83

Vertical Datum: NGVD29

Survey number:

Reference Datum: GROUND LEVEL

Wellbore	NS-Foot	NS Indicator	EW-Foot	EW Indicator	Twsp	Range	Section	Aliquot/Lot/Tract	Latitude	Longitude	County	State	Meridian	Lease Type	Lease Number	Elevation	MD	TVD	Will this well produce from this lease?
SHL Leg #1	280	FNL	760	FWL	26S	32E	1	Aliquot NWN W	32.07896	- 103.6348 71	LEA	NEW MEXI CO	NEW MEXI CO	F	NMNM 014492	333 5	0	0	Y
KOP Leg #1	100	FNL	990	FWL	26S	32E	1	Aliquot NWN W	32.07946 1	- 103.6341 41	LEA	NEW MEXI CO	NEW MEXI CO	F	NMNM 014492	- 832 1	116 74	116 56	Y
PPP Leg #1-1	100	FNL	990	FWL	26S	32E	1	Aliquot NWN W	32.07946 1	- 103.6341 41	LEA	NEW MEXI CO	NEW MEXI CO	F	NMNM 014492	- 873 4	121 87	120 69	Y

Operator Name: BTA OIL PRODUCERS LLC**Well Name:** MESA 8105 1-12 FEDERAL**Well Number:** 56H

Wellbore	NS-Foot	NS Indicator	EW-Foot	EW Indicator	Twsp	Range	Section	Aliquot/Lot/Tract	Latitude	Longitude	County	State	Meridian	Lease Type	Lease Number	Elevation	MD	TVD	Will this well produce from this lease?
EXIT Leg #1	100	FSL	990	FW L	26S	32E	12	Aliquot SWS W	32.050597	- 103.633806	LEA	NEW MEXI CO	NEW MEXI CO	F	NMNM 014492	- 8799	22294	12134	Y
BHL Leg #1	50	FSL	990	FW L	26S	32E	12	Aliquot SWS W	32.050459	- 103.633804	LEA	NEW MEXI CO	NEW MEXI CO	F	NMNM 014492	- 8799	22574	12134	Y



Drilling Plan Data Report

04/16/2021

U.S. Department of the Interior
BUREAU OF LAND MANAGEMENT

APD ID: 10400057683

Submission Date: 06/04/2020

Highlighted data
reflects the most
recent changes

Operator Name: BTA OIL PRODUCERS LLC

Well Name: MESA 8105 1-12 FEDERAL

Well Number: 56H

[Show Final Text](#)

Well Type: OIL WELL

Well Work Type: Drill

Section 1 - Geologic Formations

Formation ID	Formation Name	Elevation	True Vertical Depth	Measured Depth	Lithologies	Mineral Resources	Producing Formation
751030	QUATERNARY	3335	0	0	ALLUVIUM	NONE	N
751031	RUSTLER	2546	789	789	ANHYDRITE	NONE	N
751032	TOP SALT	2076	1259	1259	SALT	NONE	N
751033	BASE OF SALT	-1264	4599	4599	SALT	NONE	N
751034	DELAWARE	-1444	4779	4779	LIMESTONE	NATURAL GAS, OIL	N
751043	BELL CANYON	-1468	4803	4803	SANDSTONE	NATURAL GAS, OIL	N
751036	CHERRY CANYON	-2849	6184	6184	SANDSTONE	NATURAL GAS, OIL	N
751037	BRUSHY CANYON	-4069	7404	7404	SANDSTONE	NATURAL GAS, OIL	N
751038	BONE SPRING LIME	-5664	8999	8999	LIMESTONE	NATURAL GAS, OIL	N
751039	FIRST BONE SPRING SAND	-6584	9919	9919	SANDSTONE	NATURAL GAS, OIL	N
751040	BONE SPRING 2ND	-7149	10484	10484	SANDSTONE	NATURAL GAS, OIL	N
751041	BONE SPRING 3RD	-8279	11614	11614	SANDSTONE	NATURAL GAS, OIL	N
751042	WOLFCAMP	-8734	12069	12069	SHALE	NATURAL GAS, OIL	Y

Section 2 - Blowout Prevention

Operator Name: BTA OIL PRODUCERS LLC**Well Name:** MESA 8105 1-12 FEDERAL**Well Number:** 56H**Pressure Rating (PSI):** 10M**Rating Depth:** 14000

Equipment: The blowout preventer equipment (BOP) shown in Exhibit A will consist of a (10M system) double ram type (10,000 psi WP) preventer and a bag-type (Hydril) preventer (5000 psi WP). Both units will be hydraulically operated and the ram type preventer will be equipped with blind rams on top and 5" drill pipe rams on bottom. The BOPs will be installed on the 10-3/4" surface casing and utilized continuously until total depth is reached. A 2" kill line and 3" choke line will be incorporated in the drilling spool below the ram-type BOP. A remote kill line will be used for the 10M system as per onshore order #2. Other accessory BOP equipment will include a Kelly cock, floor safety valve, choke lines, and choke manifold having a 10,000 psi WP rating. The 5M annular will be tested as per BLM drilling Operations Order No. 2, and will be test to 100% of working pressure.

Requesting Variance? NO**Variance request:**

Testing Procedure: Pipe rams will be operated and checked each 24-hour period and each time the drill pipe is out of the hole. These functional tests will be documented on the daily drillers log. All BOPs and associated equipment will be tested as per BLM drilling Operations Order No. 2.

Choke Diagram Attachment:

Choke_Hose___Test_Chart_and_Specs_20190723082742.pdf

10M_choke_mannifold_20200521113335.pdf

BOP Diagram Attachment:

BLM_10M_BOP_with_5M_annular_20200521113411.pptx

5M_annular_well_control_plan_for_BLM_20200521113411.docx

10M_annular_variance_20200521113430.pdf

Section 3 - Casing

Casing ID	String Type	Hole Size	Csg Size	Condition	Standard	Tapered String	Top Set MD	Bottom Set MD	Top Set TVD	Bottom Set TVD	Top Set MSL	Bottom Set MSL	Calculated casing length MD	Grade	Weight	Joint Type	Collapse SF	Burst SF	Joint SF Type	Joint SF	Body SF Type	Body SF
1	SURFACE	14.75	10.75	NEW	API	N	0	500	0	500	3335	2835	500	J-55	40.5	ST&C	7.3	14.5	DRY	20.7	DRY	31.1
2	INTERMEDIATE	9.875	7.625	NEW	API	Y	0	8024	0	8000	3018	-4665	8024	P-110	29.7	BUTT	1.4	2.4	DRY	4	DRY	3.9
3	PRODUCTION	6.75	5.5	NEW	API	Y	0	11399	0	11381	3018	-8046	11399	P-110	20	BUTT	1.3	1.5	DRY	2.9	DRY	2.8
4	INTERMEDIATE	8.75	7.625	NEW	API	Y	8024	11599	8000	11581	-4635	-8246	3575	P-110	29.7	FJ	1.7	1.7	DRY	2.8	DRY	2.7
5	PRODUCTION	6.75	5.0	NEW	API	Y	11399	22574	11381	12134	-8046	-8799	11175	P-110	18	BUTT	1.3	1.4	DRY	1.5	DRY	1.4

Operator Name: BTA OIL PRODUCERS LLC**Well Name:** MESA 8105 1-12 FEDERAL**Well Number:** 56H**Casing Attachments**

Casing ID: 1 **String Type:** SURFACE**Inspection Document:****Spec Document:****Tapered String Spec:****Casing Design Assumptions and Worksheet(s):**Mesa_56H_casing_assumption_20200806124423.JPG

Casing ID: 2 **String Type:** INTERMEDIATE**Inspection Document:****Spec Document:****Tapered String Spec:**

7_5_8_tapered_string_9_7_8_hole_spec__20200521134254.jpg

Casing Design Assumptions and Worksheet(s):Mesa_56H_casing_assumption_20200806124443.JPG

Casing ID: 3 **String Type:** PRODUCTION**Inspection Document:****Spec Document:****Tapered String Spec:**

5.5_tapered_string_spec_20190930151650.jpg

Casing Design Assumptions and Worksheet(s):Mesa_56H_casing_assumption_20200806124613.JPG

Operator Name: BTA OIL PRODUCERS LLC

Well Name: MESA 8105 1-12 FEDERAL

Well Number: 56H

Casing Attachments

Casing ID: 4 String Type: INTERMEDIATE

Inspection Document:

Spec Document:

Tapered String Spec:

7_5_8_tapered_string_8_3_4_hole_spec_for_FJ_20200521140259.jpg

Casing Design Assumptions and Worksheet(s):

Mesa_56H_casing_assumption_20200806124703.JPG

Casing ID: 5 String Type: PRODUCTION

Inspection Document:

Spec Document:

Tapered String Spec:

5_tapered_string_spec_20190930151627.jpg

Casing Design Assumptions and Worksheet(s):

Mesa_56H_casing_assumption_20200806124345.JPG

Section 4 - Cement

String Type	Lead/Tail	Stage Tool Depth	Top MD	Bottom MD	Quantity(sx)	Yield	Density	Cu Ft	Excess%	Cement type	Additives
SURFACE	Lead		0	255	160	1.8	13.5	288	100	Class C	2% CaCl2
SURFACE	Tail		255	500	200	1.34	14.8	268	100	Class C	2% CaCl2
INTERMEDIATE	Lead	4777	0	4355	700	2.19	12.7	1533	50	Class C	0.5% CaCl2
INTERMEDIATE	Tail		4355	4777	150	1.33	14.8	199.5	50	Class C	1% CaCl2
INTERMEDIATE	Lead		4777	8050	335	2.64	10.5	884.4	25	Class H	0.5% CaCl2

Operator Name: BTA OIL PRODUCERS LLC**Well Name:** MESA 8105 1-12 FEDERAL**Well Number:** 56H

String Type	Lead/Tail	Stage Tool Depth	Top MD	Bottom MD	Quantity(sx)	Yield	Density	Cu Ft	Excess%	Cement type	Additives
INTERMEDIATE	Tail		8050	11599	400	1.19	15.6	476	25	Class H	1% CaCl2
PRODUCTION	Lead		10600	11399	0	0	0	0		n/a	n/a

PRODUCTION	Lead		11399	22574	1165	1.27	14.8	1479.55	10	Class H	0.1% Fluid Loss
------------	------	--	-------	-------	------	------	------	---------	----	---------	-----------------

Section 5 - Circulating Medium

Mud System Type: Closed**Will an air or gas system be Used?** NO**Description of the equipment for the circulating system in accordance with Onshore Order #2:****Diagram of the equipment for the circulating system in accordance with Onshore Order #2:**

Describe what will be on location to control well or mitigate other conditions: Sufficient mud materials to maintain mud properties and meet minimum lost circulation and weight increase requirements will be kept on location at all times.

Describe the mud monitoring system utilized: PVT/Pason/Visual Monitoring

Circulating Medium Table

Top Depth	Bottom Depth	Mud Type	Min Weight (lbs/gal)	Max Weight (lbs/gal)	Density (lbs/cu ft)	Gel Strength (lbs/100 sqft)	PH	Viscosity (CP)	Salinity (ppm)	Filtration (cc)	Additional Characteristics
0	500	OTHER : FW SPUD	8.3	8.4							
500	11599	OTHER : DBE	9	9.4							
11599	12134	OIL-BASED MUD	11	14							

Operator Name: BTA OIL PRODUCERS LLC**Well Name:** MESA 8105 1-12 FEDERAL**Well Number:** 56H

Section 6 - Test, Logging, Coring

List of production tests including testing procedures, equipment and safety measures:

Drill Stem Tests will be based on geological sample shows.

List of open and cased hole logs run in the well:

MUD LOG/GEOLOGICAL LITHOLOGY LOG,GAMMA RAY LOG,CEMENT BOND LOG,

Coring operation description for the well:

None planned

Section 7 - Pressure

Anticipated Bottom Hole Pressure: 8834**Anticipated Surface Pressure:** 6164**Anticipated Bottom Hole Temperature(F):** 178**Anticipated abnormal pressures, temperatures, or potential geologic hazards?** NO**Describe:****Contingency Plans geohazards description:****Contingency Plans geohazards attachment:****Hydrogen Sulfide drilling operations plan required?** YES**Hydrogen sulfide drilling operations plan:**

BTA_Oil_Producers_LLC___EMERGENCY_CALL_LIST_20190723161502.pdf

H2S_Equipment_Schematic_20190723161502.pdf

H2S_Plan_20190723161502.pdf

Section 8 - Other Information

Proposed horizontal/directional/multi-lateral plan submission:

Mesa_8105_56H_Gas_Capture_Plan_20200806125308.pdf

Mesa_56H_directional_plan_20200806125332.pdf

Mesa_56H_Wall_plot_20200806125332.pdf

Other proposed operations facets description:

A variance is requested for a Multi Bowl Wellhead. See the attached schematic. *All strings will be kept 1/3 full while running.

Other proposed operations facets attachment:**Other Variance attachment:**

BTA_MB_10_34___7_58___5_12_20200521143833.pdf



ContiTech

CONTITECH RUBBER Industrial Kft.	No:QC-DB- 599/ 2014 Page: 16 / 176
-------------------------------------	---------------------------------------

Rig 94

ASSET 24455

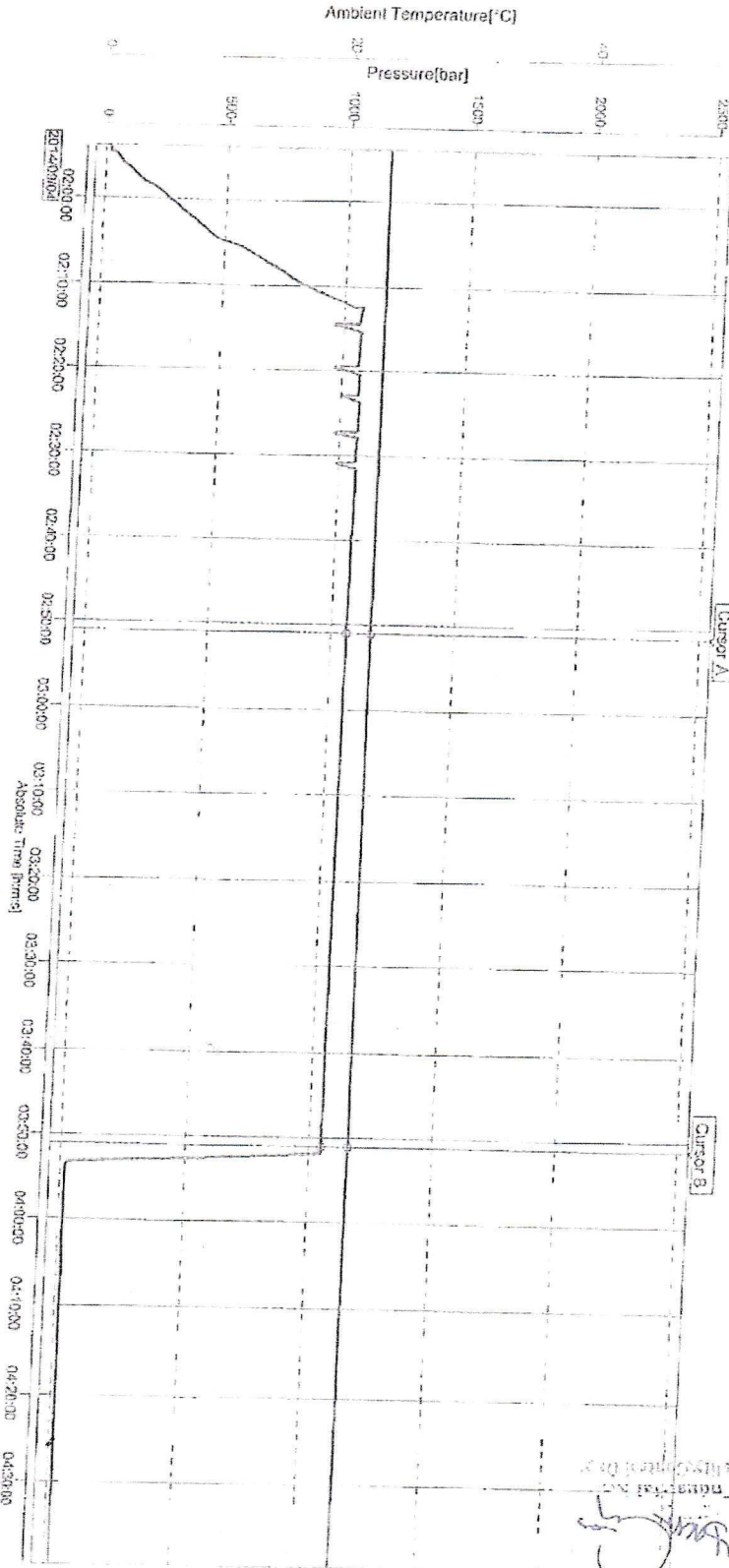
QUALITY CONTROL INSPECTION AND TEST CERTIFICATE				CERT. N°: 1592	
PURCHASER: ContiTech Oil & Marine Corp.				P.O. N°: 4500461753	
CONTITECH ORDER N°: 539225		HOSE TYPE: 3" ID Choke & Kill Hose			
HOSE SERIAL N°: 68547		NOMINAL / ACTUAL LENGTH: 7,62 m / 7,66 m			
W.P. 68,9 MPa 10000 psi		T.P. 103,4 MPa 15000 psi		Duration: 60 min.	
Pressure test with water at ambient temperature					
See attachment. (1 page)					
→ 10 Min. ↑ 50 MPa					
COUPLINGS Type		Serial N°		Quality	
3" coupling with		2574 5533		AISI 4130	
4 1/16" 10K API Swivel Flange end				AISI 4130	
Hub				AISI 4130	
				A1582N H8672	
				58855	
				A1199N A1423N	
Not Designed For Well Testing				API Spec 16 C	
Fire Rated				Temperature rate:"B"	
All metal parts are flawless					
WE CERTIFY THAT THE ABOVE HOSE HAS BEEN MANUFACTURED IN ACCORDANCE WITH THE TERMS OF THE ORDER INSPECTED AND PRESSURE TESTED AS ABOVE WITH SATISFACTORY RESULT.					
STATEMENT OF CONFORMITY: We hereby certify that the above items/equipment supplied by us are in conformity with the terms, conditions and specifications of the above Purchaser Order and that these items/equipment were fabricated inspected and tested in accordance with the referenced standards, codes and specifications and meet the relevant acceptance criteria and design requirements.					
Date: 04. September 2014.		Inspector		Quality Control	
				ContiTech Rubber Industrial Kft. Quality Control Dept. <i>[Signature]</i>	

ContiTech Rubber Industrial Kft. | Budapest 61 10. H-6728 Szeged | H-6701 P.O.Box 152 Szeged, Hungary
 Phone: +36 62 566 737 | Fax: +36 62 566 738 | e-mail: info@bud.contitech.hu | Internet: www.contitech-rubber.hu, www.contitech.hu
 The Court of Szeged County as Registry Court | Registry Court No. Cg 06 09 002532 | EU VAT No. HU11067205
 Bank card: Commerzbank Zrt., Budapest | 14220100 26831000

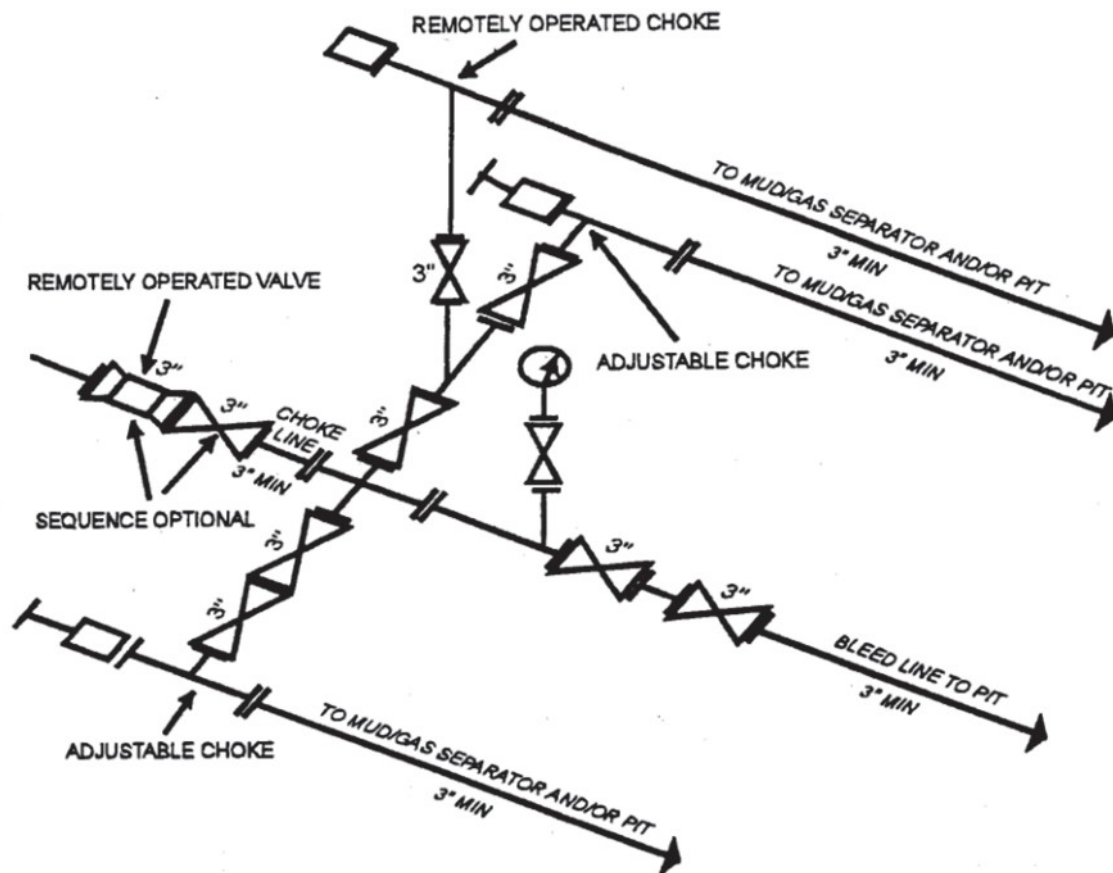
File Name : 000220_69543_68545-547.GEV.....000236_68543_68545-547.GEV
File Message : 69543_68545_58547
Device Type : GX10
Serial No. : SSF606399
Data Count : 9046
Print Group :
Print Range :
Comment :
Press Temp :
2014/09/04 01:53:54.000 - 2014/09/04 04:39:39.000

Sampling Int. : 1.000 sec
Start Time : 2014/09/04 01:53:54.000
Stop Time : 2014/09/04 04:39:39.000

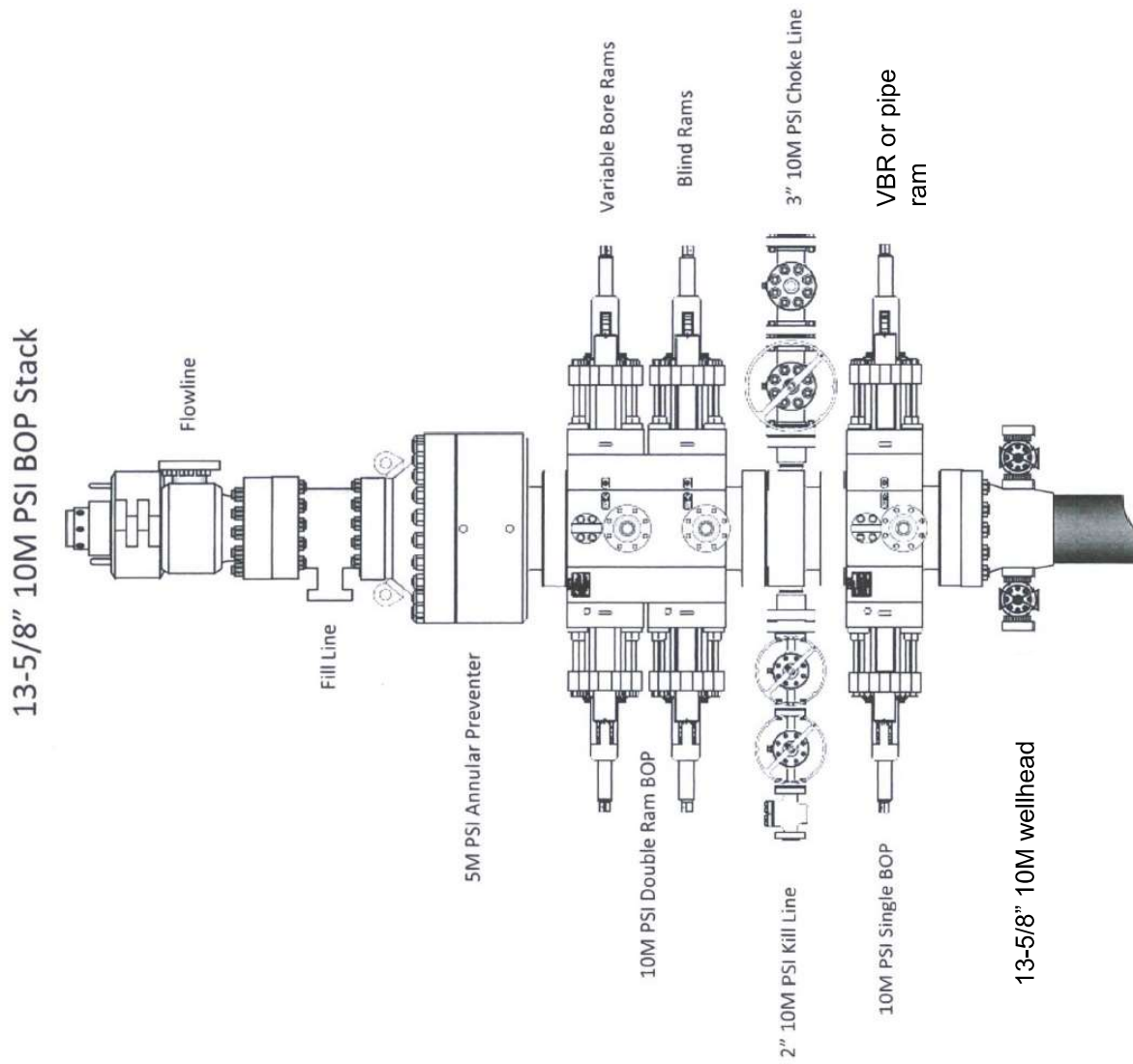
Date No	Cursor A	Cursor B	Difference
Absolute Time	2014/09/04 02:51:06.000	2014/09/04 03:51:06.000	01:00:00.000
Tug Comment	Value A	Value B	Value B-A
Pressure[bar]	1062.95	1048.57	-14.38
Ambient Temperature[C]	23.24	23.14	-0.10



10min



10M AND 15M CHOKE MANIFOLD EQUIPMENT - CONFIGURATION OF CHOKES MAY VARY
 [53 FR 49661, Dec. 9, 1988 and 54 FR 39528, Sept. 27, 1989]



Well control plan for 10M BOPE with 5M annular

Drilling

1. Sound alarm (alert crew).
2. Space out drill string.
3. Shut down pumps (stop pumps and rotary).
4. Shut-in Well with annular with HCR and choke in closed position.
5. Confirm shut-in.
6. Notify tool pusher/company representative.
7. Read and record the following:
 - a. SIDPP & SICP
 - b. Time of shut in
 - c. Pit gain
8. Regroup and identify forward plan. If pressure has increased to 2500 psi, confirm spacing and close the upper variable bore rams.
9. Prepare for well kill operation.

Tripping

1. Sound alarm (alert rig crew)
2. Stab full opening safety valve and close valve
3. Space out drill string
4. Shut in the well with the annular with HCR and choke in closed position
5. Confirm shut in
6. Notify tool pusher/company representative
7. Read and record the following
 - a. Time of shut in
 - b. SIDPP and SICP
 - c. Pit gain
8. If pressure has increased to 2500 psi, confirm spacing and close the upper most variable bore ram.
9. Prepare for well kill operation.

While Running Casing

1. Sound alarm (alert rig crew)
2. Stab crossover and full opening safety valve and close valve
3. Space out casing string
4. Shut in well with annular with HCR and choke in closed position
5. Confirm shut in
6. Notify tool pusher/company representative
7. Read and record the following:
 - a. SIDPP & SICP
 - b. Pit gain
 - c. Time
8. If pressure has increased to 2500 psi, confirm spacing and close the upper most variable bore ram.
9. Prepare for well kill operation.

No Pipe In Hole (Open Hole)

1. Sound alarm (alert rig crew)

Well control plan for 10M BOPE with 5M annular

2. Shut in blind rams with HCR and choke in closed position
3. Confirm shut in
4. Notify tool pusher/company representative
5. Read and record the following:
 - a. SICP
 - b. Pit gain
 - c. Time
6. Prepare for well kill operation

Pulling BHA thru Stack


1. Prior to pulling last joint of drill pipe thru the stack
 - a. Perform flow check, if flowing:
 - a.i. Sound Alarm (alert crew)
 - a.ii. Stab full opening safety valve and close valve
 - a.iii. Space out drill string
 - a.iv. Shut in using upper most VBR, choke and HCR in closed position
 - a.v. Confirm shut in
 - a.vi. Notify tool pusher/company representative.
 - a.vii. Read and record the following:
 - a.vii.1. SIDPP and SICP
 - a.vii.2. Pit gain
 - a.vii.3. Time
 - a.viii. Prepare for well kill operation
 2. With BHA in the stack:
 - a. If possible pull BHA clear of stack
 - a.i. Follow 'open hole' procedure above
 - b. If unable to pull BHA clear of stack
 - b.i. Stab crossover with full opening safety valve, close valve.
 - b.ii. Space out
 - b.iii. Shut in using upper most VBR. HCR and choke in closed position.
 - b.iv. Confirm shut in
 - b.v. Notify tool pusher/company rep
 - b.vi. Read and record the following:
 - b.vi.1. SIDPP and SICP
 - b.vi.2. Pit gain
 - b.vi.3. Time
 - b.vii. Prepare for well kill operation

Drilling component and preventer compatibility table **for 10M approval**

The following table outlines the drilling and production liner components for Wolfcamp targets requiring 10M BOPE approval. Variance is requested to utilize a 5M annular preventer in 6-1/8" hole as all components can be covered using 10M rated VBR's (variable bore rams). 5M annular on the 10M system will be tested to 100% of rated working pressure.

6-1/8" hole section – 10M BOPE requirement (13-5/8" BOP)			
Component	OD	Preventer	RWP
Drill pipe	4"	3.5"-5.5" VBR	10M
HWDP	4"	3.5"-5.5" VBR	10M
Jars	5"	3.5"-5.5" VBR	10M
DC's and NMDC's	4-3/4"	3.5"-5.5" VBR	10M
Mud motor	5"	3.5"-5.5" VBR	10M
Casing	4-1/2"	3.5"-5.5" VBR	10M
Open hole	NA	Blind rams	10M

12-1/4" & 8-3/4" hole sections – 5M BOPE requirement (13-5/8" BOP)			
Component	OD	Preventer	RWP
Drill pipe	5"	3.5"-5.5" VBR or 5" pipe rams	10M
HWDP	5"	3.5"-5.5" VBR or 5" pipe rams	10M
Jars	6-1/4"	Annular	5M
DC's and NMDC's	7"-8"	Annular	5M
Mud motor	7"-8"	Annular	5M
Casing	9-5/8" & 7"	Annular	5M
Open hole	NA	Blind rams	10M

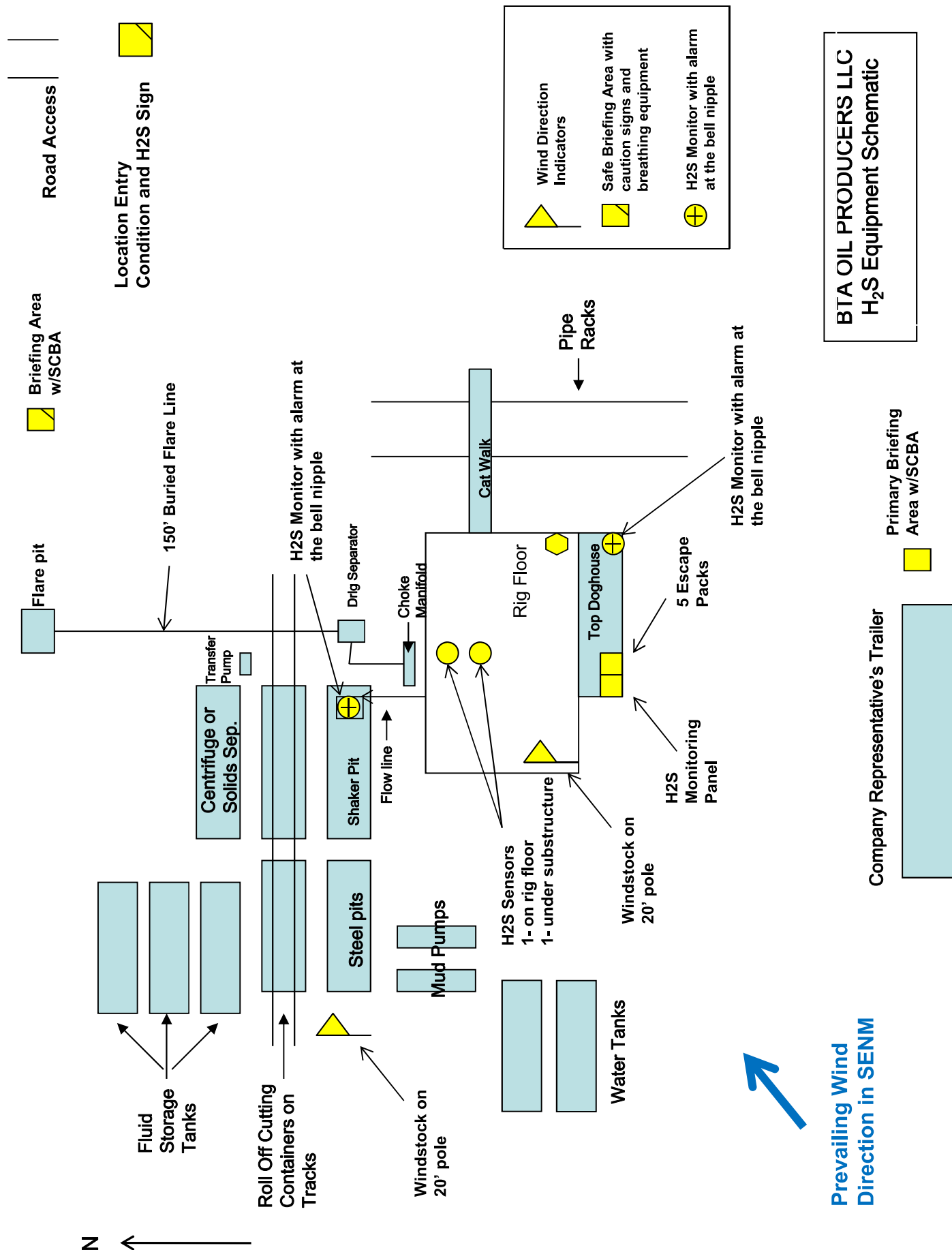
		BTA Oil Producers, LLC								WELL:		MESA 8105 1-12 FEDERAL #56H (WS				
		104 S Pecos								TVD:		12134				
		Midland, TX 79701								MD:		22574				
DRILLING PLAN																
Casing Program																
Hole Size	Csg. Size	From (MD)	To (MD)	From (TVD)	To (TVD)	Tapered String	Weight (lbs)	Grade	Conn.	Collapse	Burst	Body Tension	Joint Tension	Dry/ Buoyant	Mud Weight (ppg)	
14 3/4	10 3/4	0	500	0	500	No	40.5	J-55	STC	7.3	14.5	31.1	20.7	Dry	8.3	
9 7/8	7 5/8	0	8024	0	8000	yes	29.7	P110	Buttress	1.4	2.4	3.9	4.0	Dry	9.4	
8 3/4	7 5/8	8024	11599	8000	11581	yes	29.7	P110	FJ	1.7	1.7	2.7	2.8	Dry	9.4	
6 3/4	5 1/2	0	11399	0	11381	Yes	20	P110	Buttress	1.3	1.5	2.8	2.9	Dry	14	
6 3/4	5	11399	22574	11381	12134	Yes	18	P110	Buttress	1.3	1.4	1.4	1.5	Dry	14	
•7 5/8" has DV Tool @ 4777'																

EMERGENCY CALL LIST

	<u>OFFICE</u>	<u>MOBILE</u>
BTA Oil Producers LLC OFFICE	432-682-3753	
BEN GRIMES, Operations	432-682-3753	432-559-4309
NICK EATON, Drilling	432-682-3753	432-260-7841
TRACE WOHLFAHRT, Completions	432-682-3753	

EMERGENCY RESPONSE NUMBERS

	<u>OFFICE</u>
STATE POLICE	575-748-9718
EDDY COUNTY SHERIFF	575-746-2701
EMERGENCY MEDICAL SERVICES (AMBULANCE)	911 or 575-746-2701
EDDY COUNTY EMERGENCY MANAGEMENT (HARRY BURGESS)	575-887-9511
STATE EMERGENCY RESPONSE CENTER (SERC)	575-476-9620
CARLSBAD POLICE DEPARTMENT	575-885-2111
CARLSBAD FIRE DEPARTMENT	575-885-3125
NEW MEXICO OIL CONSERVATION DIVISION	575-748-1283
INDIAN FIRE & SAFETY	800-530-8693
HALLIBURTON SERVICES	800-844-8451



BTA OIL PRODUCERS LLC**HYDROGEN SULFIDE DRILLING OPERATIONS PLAN****1. HYDROGEN SULFIDE TRAINING**

All personnel, whether regularly assigned, contracted, or employed on an unscheduled basis, will receive training from a qualified instructor in the following areas prior to commencing drilling operations on this well:

- a. The hazards and characteristics of hydrogen sulfide (H₂S).
- b. The proper use and maintenance of personal protective equipment and life support systems.
- c. The proper use of H₂S detectors, alarms, warning systems, briefing areas, evacuation procedures, and prevailing winds.
- d. The proper techniques for first aid and rescue procedures.

In addition, supervisory personnel will be trained in the following areas:

- a. The effects of H₂S on metal components. If high tensile tubulars are to be used, personnel will be trained in their special maintenance requirements.
- b. Corrective action and shut-in procedures when drilling or reworking a well and blowout prevention and well control procedures.
- c. The contents and requirements of the H₂S Drilling Operations Plan and the Public Protection Plan.

There will be an initial training session just prior to encountering a known or probable H₂S zone (within 3 days or 500 feet) and weekly H₂S and well control drills for all personnel in each crew. The initial training session shall include a review of the site specific H₂S Drilling Operations Plan and the Public Protection Plan. This plan shall be available at the well site. All personnel will be required to carry documentation that they have received the proper training.

2. H₂S SAFETY EQUIPMENT AND SYSTEMS

Note: All H₂S safety equipment and systems will be installed, tested, and operational when drilling reaches a depth of 500 feet above, or three days prior to penetrating the first zone containing or reasonably expected to contain H₂S. If H₂S greater than 100 ppm is encountered in the gas stream we will shut in and install H₂S equipment.

- a. Well Control Equipment:
 - Flare line.
 - Choke manifold with remotely operated choke.
 - Blind rams and pipe rams to accommodate all pipe sizes with properly sized closing unit.
 - Auxiliary equipment to include: annular preventer, mud-gas separator, rotating head.
- b. Protective equipment for essential personnel:
 - Mark II Surviveair 30-minute units located in the dog house and at briefing areas.
- c. H₂S detection and monitoring equipment:

- 2 - portable H2S monitor positioned on location for best coverage and response. These units have warning lights and audible sirens when H2S levels of 20 ppm are reached.
- d. Visual warning systems:
Caution/Danger signs shall be posted on roads providing direct access to location. Signs will be painted a high visibility yellow with black lettering of sufficient size to be readable at a reasonable distance from the immediate location. Bilingual signs will be used, when appropriate. See example attached.
- e. Mud Program:
The mud program has been designed to minimize the volume of H2S circulated to the surface.
- f. Metallurgy:
All drill strings, casings, tubing, wellhead, blowout preventers, drilling spool, kill lines, choke manifold and lines, and valves shall be suitable for H2S service.
- g. Communication:
Company vehicles equipped with cellular telephone.

W A R N I N G

YOU ARE ENTERING AN H₂S AREA AUTHORIZED PERSONNEL ONLY

- 1. BEARDS OR CONTACT LENSES NOT ALLOWED**
- 2. HARD HATS REQUIRED**
- 3. SMOKING IN DESIGNATED AREAS ONLY**
- 4. BE WIND CONSCIOUS AT ALL TIMES**
- 5. CK WITH BTA OIL PRODUCERS LLC FOREMAN AT MAIN OFFICE**

BTA OIL PRODUCERS LLC

1-432-682-3753

BTA Oil Producers, LLC

Lea County, NM (NAD 83)

Mesa Sec 1 & 12, T26S, R32E

Mesa #56H

Wellbore #1

Plan: Design #1

Standard Planning Report - Geographic

06 August, 2020

Microsoft
Planning Report - Geographic

Database:	Old	Local Co-ordinate Reference:	Well Mesa #56H
Company:	BTA Oil Producers, LLC	TVD Reference:	WELL @ 3334.0usft (Original Well Elev)
Project:	Lea County, NM (NAD 83)	MD Reference:	WELL @ 3334.0usft (Original Well Elev)
Site:	Mesa Sec 1 & 12, T26S, R32E	North Reference:	Grid
Well:	Mesa #56H	Survey Calculation Method:	Minimum Curvature
Wellbore:	Wellbore #1		
Design:	Design #1		

Project	Lea County, NM (NAD 83), Lea County, NM		
Map System:	US State Plane 1983	System Datum:	Ground Level
Geo Datum:	North American Datum 1983		
Map Zone:	New Mexico Eastern Zone		Using geodetic scale factor

Site	Mesa Sec 1 & 12, T26S, R32E		
Site Position:		Northing:	388,415.22 usft
From:	Map	Easting:	759,217.78 usft
Position Uncertainty:	0.0 usft	Slot Radius:	13-3/16 "
		Latitude:	32° 3' 57.173 N
		Longitude:	103° 37' 47.896 W
		Grid Convergence:	0.37 °

Well	Mesa #56H		
Well Position	+N/-S	0.0 usft	Northing:
	+E/-W	0.0 usft	Easting:
Position Uncertainty	0.0 usft	Wellhead Elevation:	
		Latitude:	32° 4' 44.257 N
		Longitude:	103° 38' 5.537 W
		Ground Level:	3,334.0 usft

Wellbore	Wellbore #1				
Magnetics	Model Name	Sample Date	Declination (°)	Dip Angle (°)	Field Strength (nT)
	IGRF200510	12/31/2009	7.77	60.09	48,698.95534928

Design	Design #1			
Audit Notes:				
Version:	Phase:	PROTOTYPE	Tie On Depth:	0.0
Vertical Section:	Depth From (TVD) (usft)	+N/-S (usft)	+E/-W (usft)	Direction (°)
	0.0	0.0	0.0	177.80

Plan Survey Tool Program	Date	8/6/2020		
Depth From (usft)	Depth To (usft)	Survey (Wellbore)	Tool Name	Remarks
1	0.0	22,786.3 Design #1 (Wellbore #1)		

Plan Sections										
Measured Depth (usft)	Inclination (°)	Azimuth (°)	Vertical Depth (usft)	+N/-S (usft)	+E/-W (usft)	Dogleg Rate (°/100usft)	Build Rate (°/100usft)	Turn Rate (°/100usft)	TFO (°)	Target
0.0	0.00	0.00	0.0	0.0	0.0	0.00	0.00	0.00	0.00	
1,300.0	0.00	0.00	1,300.0	0.0	0.0	0.00	0.00	0.00	0.00	
1,600.0	6.00	41.50	1,599.5	11.8	10.4	2.00	2.00	0.00	41.50	
4,620.6	6.00	41.50	4,603.6	248.2	219.6	0.00	0.00	0.00	0.00	
4,920.6	0.00	0.00	4,903.0	260.0	230.0	2.00	-2.00	0.00	180.00	
11,599.1	0.00	0.00	11,581.5	260.0	230.0	0.00	0.00	0.00	0.00	
11,674.2	0.00	0.00	11,656.5	260.0	230.0	0.00	0.00	0.00	0.00	
12,424.2	90.00	179.10	12,134.0	-217.4	237.5	12.00	12.00	0.00	179.10	
22,574.4	90.00	179.10	12,134.0	-10,366.4	397.7	0.00	0.00	0.00	0.00	Mesa #56H BHL

Microsoft
Planning Report - Geographic

Database:	Old	Local Co-ordinate Reference:	Well Mesa #56H
Company:	BTA Oil Producers, LLC	TVD Reference:	WELL @ 3334.0usft (Original Well Elev)
Project:	Lea County, NM (NAD 83)	MD Reference:	WELL @ 3334.0usft (Original Well Elev)
Site:	Mesa Sec 1 & 12, T26S, R32E	North Reference:	Grid
Well:	Mesa #56H	Survey Calculation Method:	Minimum Curvature
Wellbore:	Wellbore #1		
Design:	Design #1		

Planned Survey									
Measured Depth (usft)	Inclination (°)	Azimuth (°)	Vertical Depth (usft)	+N/-S (usft)	+E/-W (usft)	Map Northing (usft)	Map Easting (usft)	Latitude	Longitude
0.0	0.00	0.00	0.0	0.0	0.0	393,163.20	757,669.00	32° 4' 44.257 N	103° 38' 5.537 W
100.0	0.00	0.00	100.0	0.0	0.0	393,163.20	757,669.00	32° 4' 44.257 N	103° 38' 5.537 W
200.0	0.00	0.00	200.0	0.0	0.0	393,163.20	757,669.00	32° 4' 44.257 N	103° 38' 5.537 W
300.0	0.00	0.00	300.0	0.0	0.0	393,163.20	757,669.00	32° 4' 44.257 N	103° 38' 5.537 W
400.0	0.00	0.00	400.0	0.0	0.0	393,163.20	757,669.00	32° 4' 44.257 N	103° 38' 5.537 W
500.0	0.00	0.00	500.0	0.0	0.0	393,163.20	757,669.00	32° 4' 44.257 N	103° 38' 5.537 W
600.0	0.00	0.00	600.0	0.0	0.0	393,163.20	757,669.00	32° 4' 44.257 N	103° 38' 5.537 W
700.0	0.00	0.00	700.0	0.0	0.0	393,163.20	757,669.00	32° 4' 44.257 N	103° 38' 5.537 W
800.0	0.00	0.00	800.0	0.0	0.0	393,163.20	757,669.00	32° 4' 44.257 N	103° 38' 5.537 W
900.0	0.00	0.00	900.0	0.0	0.0	393,163.20	757,669.00	32° 4' 44.257 N	103° 38' 5.537 W
1,000.0	0.00	0.00	1,000.0	0.0	0.0	393,163.20	757,669.00	32° 4' 44.257 N	103° 38' 5.537 W
1,100.0	0.00	0.00	1,100.0	0.0	0.0	393,163.20	757,669.00	32° 4' 44.257 N	103° 38' 5.537 W
1,200.0	0.00	0.00	1,200.0	0.0	0.0	393,163.20	757,669.00	32° 4' 44.257 N	103° 38' 5.537 W
1,300.0	0.00	0.00	1,300.0	0.0	0.0	393,163.20	757,669.00	32° 4' 44.257 N	103° 38' 5.537 W
1,400.0	2.00	41.50	1,400.0	1.3	1.2	393,164.51	757,670.15	32° 4' 44.269 N	103° 38' 5.523 W
1,500.0	4.00	41.50	1,499.8	5.2	4.6	393,168.43	757,673.62	32° 4' 44.308 N	103° 38' 5.482 W
1,600.0	6.00	41.50	1,599.5	11.8	10.4	393,174.95	757,679.39	32° 4' 44.372 N	103° 38' 5.415 W
1,700.0	6.00	41.50	1,698.9	19.6	17.3	393,182.78	757,686.32	32° 4' 44.449 N	103° 38' 5.334 W
1,800.0	6.00	41.50	1,798.4	27.4	24.2	393,190.61	757,693.25	32° 4' 44.526 N	103° 38' 5.253 W
1,900.0	6.00	41.50	1,897.8	35.2	31.2	393,198.44	757,700.17	32° 4' 44.603 N	103° 38' 5.172 W
2,000.0	6.00	41.50	1,997.3	43.1	38.1	393,206.27	757,707.10	32° 4' 44.680 N	103° 38' 5.091 W
2,100.0	6.00	41.50	2,096.7	50.9	45.0	393,214.10	757,714.02	32° 4' 44.757 N	103° 38' 5.009 W
2,200.0	6.00	41.50	2,196.2	58.7	52.0	393,221.93	757,720.95	32° 4' 44.834 N	103° 38' 4.928 W
2,300.0	6.00	41.50	2,295.6	66.6	58.9	393,229.75	757,727.87	32° 4' 44.911 N	103° 38' 4.847 W
2,400.0	6.00	41.50	2,395.1	74.4	65.8	393,237.58	757,734.80	32° 4' 44.988 N	103° 38' 4.766 W
2,500.0	6.00	41.50	2,494.5	82.2	72.7	393,245.41	757,741.72	32° 4' 45.065 N	103° 38' 4.685 W
2,600.0	6.00	41.50	2,594.0	90.0	79.7	393,253.24	757,748.65	32° 4' 45.142 N	103° 38' 4.604 W
2,700.0	6.00	41.50	2,693.4	97.9	86.6	393,261.07	757,755.58	32° 4' 45.219 N	103° 38' 4.523 W
2,800.0	6.00	41.50	2,792.9	105.7	93.5	393,268.90	757,762.50	32° 4' 45.297 N	103° 38' 4.442 W
2,900.0	6.00	41.50	2,892.3	113.5	100.4	393,276.73	757,769.43	32° 4' 45.374 N	103° 38' 4.361 W
3,000.0	6.00	41.50	2,991.8	121.4	107.4	393,284.56	757,776.35	32° 4' 45.451 N	103° 38' 4.280 W
3,100.0	6.00	41.50	3,091.2	129.2	114.3	393,292.39	757,783.28	32° 4' 45.528 N	103° 38' 4.199 W
3,200.0	6.00	41.50	3,190.7	137.0	121.2	393,300.21	757,790.20	32° 4' 45.605 N	103° 38' 4.118 W
3,300.0	6.00	41.50	3,290.1	144.8	128.1	393,308.04	757,797.13	32° 4' 45.682 N	103° 38' 4.036 W
3,400.0	6.00	41.50	3,389.6	152.7	135.1	393,315.87	757,804.05	32° 4' 45.759 N	103° 38' 3.955 W
3,500.0	6.00	41.50	3,489.0	160.5	142.0	393,323.70	757,810.98	32° 4' 45.836 N	103° 38' 3.874 W
3,600.0	6.00	41.50	3,588.5	168.3	148.9	393,331.53	757,817.91	32° 4' 45.913 N	103° 38' 3.793 W
3,700.0	6.00	41.50	3,687.9	176.2	155.8	393,339.36	757,824.83	32° 4' 45.990 N	103° 38' 3.712 W
3,800.0	6.00	41.50	3,787.4	184.0	162.8	393,347.19	757,831.76	32° 4' 46.067 N	103° 38' 3.631 W
3,900.0	6.00	41.50	3,886.9	191.8	169.7	393,355.02	757,838.68	32° 4' 46.144 N	103° 38' 3.550 W
4,000.0	6.00	41.50	3,986.3	199.7	176.6	393,362.85	757,845.61	32° 4' 46.221 N	103° 38' 3.469 W
4,100.0	6.00	41.50	4,085.8	207.5	183.5	393,370.67	757,852.53	32° 4' 46.298 N	103° 38' 3.388 W
4,200.0	6.00	41.50	4,185.2	215.3	190.5	393,378.50	757,859.46	32° 4' 46.375 N	103° 38' 3.307 W
4,300.0	6.00	41.50	4,284.7	223.1	197.4	393,386.33	757,866.38	32° 4' 46.452 N	103° 38' 3.226 W
4,400.0	6.00	41.50	4,384.1	231.0	204.3	393,394.16	757,873.31	32° 4' 46.529 N	103° 38' 3.145 W
4,500.0	6.00	41.50	4,483.6	238.8	211.2	393,401.99	757,880.23	32° 4' 46.606 N	103° 38' 3.064 W
4,600.0	6.00	41.50	4,583.0	246.6	218.2	393,409.82	757,887.16	32° 4' 46.683 N	103° 38' 2.982 W
4,620.6	6.00	41.50	4,603.6	248.2	219.6	393,411.44	757,888.59	32° 4' 46.699 N	103° 38' 2.966 W
4,700.0	4.41	41.50	4,682.6	253.6	224.4	393,416.83	757,893.36	32° 4' 46.752 N	103° 38' 2.910 W
4,800.0	2.41	41.50	4,782.4	258.1	228.3	393,421.29	757,897.31	32° 4' 46.796 N	103° 38' 2.864 W
4,900.0	0.41	41.50	4,882.4	259.9	230.0	393,423.13	757,898.94	32° 4' 46.814 N	103° 38' 2.845 W
4,920.6	0.00	0.00	4,903.0	260.0	230.0	393,423.19	757,898.99	32° 4' 46.815 N	103° 38' 2.844 W
5,000.0	0.00	0.00	4,982.4	260.0	230.0	393,423.19	757,898.99	32° 4' 46.815 N	103° 38' 2.844 W
5,100.0	0.00	0.00	5,082.4	260.0	230.0	393,423.19	757,898.99	32° 4' 46.815 N	103° 38' 2.844 W
5,200.0	0.00	0.00	5,182.4	260.0	230.0	393,423.19	757,898.99	32° 4' 46.815 N	103° 38' 2.844 W

Microsoft
Planning Report - Geographic

Database:	Old	Local Co-ordinate Reference:	Well Mesa #56H
Company:	BTA Oil Producers, LLC	TVD Reference:	WELL @ 3334.0usft (Original Well Elev)
Project:	Lea County, NM (NAD 83)	MD Reference:	WELL @ 3334.0usft (Original Well Elev)
Site:	Mesa Sec 1 & 12, T26S, R32E	North Reference:	Grid
Well:	Mesa #56H	Survey Calculation Method:	Minimum Curvature
Wellbore:	Wellbore #1		
Design:	Design #1		

Planned Survey										
Measured Depth (usft)	Inclination (°)	Azimuth (°)	Vertical Depth (usft)	+N/-S (usft)	+E/-W (usft)	Map Northing (usft)	Map Easting (usft)	Latitude	Longitude	
5,300.0	0.00	0.00	5,282.4	260.0	230.0	393,423.19	757,898.99	32° 4' 46.815 N	103° 38' 2.844 W	
5,400.0	0.00	0.00	5,382.4	260.0	230.0	393,423.19	757,898.99	32° 4' 46.815 N	103° 38' 2.844 W	
5,500.0	0.00	0.00	5,482.4	260.0	230.0	393,423.19	757,898.99	32° 4' 46.815 N	103° 38' 2.844 W	
5,600.0	0.00	0.00	5,582.4	260.0	230.0	393,423.19	757,898.99	32° 4' 46.815 N	103° 38' 2.844 W	
5,700.0	0.00	0.00	5,682.4	260.0	230.0	393,423.19	757,898.99	32° 4' 46.815 N	103° 38' 2.844 W	
5,800.0	0.00	0.00	5,782.4	260.0	230.0	393,423.19	757,898.99	32° 4' 46.815 N	103° 38' 2.844 W	
5,900.0	0.00	0.00	5,882.4	260.0	230.0	393,423.19	757,898.99	32° 4' 46.815 N	103° 38' 2.844 W	
6,000.0	0.00	0.00	5,982.4	260.0	230.0	393,423.19	757,898.99	32° 4' 46.815 N	103° 38' 2.844 W	
6,100.0	0.00	0.00	6,082.4	260.0	230.0	393,423.19	757,898.99	32° 4' 46.815 N	103° 38' 2.844 W	
6,200.0	0.00	0.00	6,182.4	260.0	230.0	393,423.19	757,898.99	32° 4' 46.815 N	103° 38' 2.844 W	
6,300.0	0.00	0.00	6,282.4	260.0	230.0	393,423.19	757,898.99	32° 4' 46.815 N	103° 38' 2.844 W	
6,400.0	0.00	0.00	6,382.4	260.0	230.0	393,423.19	757,898.99	32° 4' 46.815 N	103° 38' 2.844 W	
6,500.0	0.00	0.00	6,482.4	260.0	230.0	393,423.19	757,898.99	32° 4' 46.815 N	103° 38' 2.844 W	
6,600.0	0.00	0.00	6,582.4	260.0	230.0	393,423.19	757,898.99	32° 4' 46.815 N	103° 38' 2.844 W	
6,700.0	0.00	0.00	6,682.4	260.0	230.0	393,423.19	757,898.99	32° 4' 46.815 N	103° 38' 2.844 W	
6,800.0	0.00	0.00	6,782.4	260.0	230.0	393,423.19	757,898.99	32° 4' 46.815 N	103° 38' 2.844 W	
6,900.0	0.00	0.00	6,882.4	260.0	230.0	393,423.19	757,898.99	32° 4' 46.815 N	103° 38' 2.844 W	
7,000.0	0.00	0.00	6,982.4	260.0	230.0	393,423.19	757,898.99	32° 4' 46.815 N	103° 38' 2.844 W	
7,100.0	0.00	0.00	7,082.4	260.0	230.0	393,423.19	757,898.99	32° 4' 46.815 N	103° 38' 2.844 W	
7,200.0	0.00	0.00	7,182.4	260.0	230.0	393,423.19	757,898.99	32° 4' 46.815 N	103° 38' 2.844 W	
7,300.0	0.00	0.00	7,282.4	260.0	230.0	393,423.19	757,898.99	32° 4' 46.815 N	103° 38' 2.844 W	
7,400.0	0.00	0.00	7,382.4	260.0	230.0	393,423.19	757,898.99	32° 4' 46.815 N	103° 38' 2.844 W	
7,500.0	0.00	0.00	7,482.4	260.0	230.0	393,423.19	757,898.99	32° 4' 46.815 N	103° 38' 2.844 W	
7,600.0	0.00	0.00	7,582.4	260.0	230.0	393,423.19	757,898.99	32° 4' 46.815 N	103° 38' 2.844 W	
7,700.0	0.00	0.00	7,682.4	260.0	230.0	393,423.19	757,898.99	32° 4' 46.815 N	103° 38' 2.844 W	
7,800.0	0.00	0.00	7,782.4	260.0	230.0	393,423.19	757,898.99	32° 4' 46.815 N	103° 38' 2.844 W	
7,900.0	0.00	0.00	7,882.4	260.0	230.0	393,423.19	757,898.99	32° 4' 46.815 N	103° 38' 2.844 W	
8,000.0	0.00	0.00	7,982.4	260.0	230.0	393,423.19	757,898.99	32° 4' 46.815 N	103° 38' 2.844 W	
8,100.0	0.00	0.00	8,082.4	260.0	230.0	393,423.19	757,898.99	32° 4' 46.815 N	103° 38' 2.844 W	
8,200.0	0.00	0.00	8,182.4	260.0	230.0	393,423.19	757,898.99	32° 4' 46.815 N	103° 38' 2.844 W	
8,300.0	0.00	0.00	8,282.4	260.0	230.0	393,423.19	757,898.99	32° 4' 46.815 N	103° 38' 2.844 W	
8,400.0	0.00	0.00	8,382.4	260.0	230.0	393,423.19	757,898.99	32° 4' 46.815 N	103° 38' 2.844 W	
8,500.0	0.00	0.00	8,482.4	260.0	230.0	393,423.19	757,898.99	32° 4' 46.815 N	103° 38' 2.844 W	
8,600.0	0.00	0.00	8,582.4	260.0	230.0	393,423.19	757,898.99	32° 4' 46.815 N	103° 38' 2.844 W	
8,700.0	0.00	0.00	8,682.4	260.0	230.0	393,423.19	757,898.99	32° 4' 46.815 N	103° 38' 2.844 W	
8,800.0	0.00	0.00	8,782.4	260.0	230.0	393,423.19	757,898.99	32° 4' 46.815 N	103° 38' 2.844 W	
8,900.0	0.00	0.00	8,882.4	260.0	230.0	393,423.19	757,898.99	32° 4' 46.815 N	103° 38' 2.844 W	
9,000.0	0.00	0.00	8,982.4	260.0	230.0	393,423.19	757,898.99	32° 4' 46.815 N	103° 38' 2.844 W	
9,100.0	0.00	0.00	9,082.4	260.0	230.0	393,423.19	757,898.99	32° 4' 46.815 N	103° 38' 2.844 W	
9,200.0	0.00	0.00	9,182.4	260.0	230.0	393,423.19	757,898.99	32° 4' 46.815 N	103° 38' 2.844 W	
9,300.0	0.00	0.00	9,282.4	260.0	230.0	393,423.19	757,898.99	32° 4' 46.815 N	103° 38' 2.844 W	
9,400.0	0.00	0.00	9,382.4	260.0	230.0	393,423.19	757,898.99	32° 4' 46.815 N	103° 38' 2.844 W	
9,500.0	0.00	0.00	9,482.4	260.0	230.0	393,423.19	757,898.99	32° 4' 46.815 N	103° 38' 2.844 W	
9,600.0	0.00	0.00	9,582.4	260.0	230.0	393,423.19	757,898.99	32° 4' 46.815 N	103° 38' 2.844 W	
9,700.0	0.00	0.00	9,682.4	260.0	230.0	393,423.19	757,898.99	32° 4' 46.815 N	103° 38' 2.844 W	
9,800.0	0.00	0.00	9,782.4	260.0	230.0	393,423.19	757,898.99	32° 4' 46.815 N	103° 38' 2.844 W	
9,900.0	0.00	0.00	9,882.4	260.0	230.0	393,423.19	757,898.99	32° 4' 46.815 N	103° 38' 2.844 W	
10,000.0	0.00	0.00	9,982.4	260.0	230.0	393,423.19	757,898.99	32° 4' 46.815 N	103° 38' 2.844 W	
10,100.0	0.00	0.00	10,082.4	260.0	230.0	393,423.19	757,898.99	32° 4' 46.815 N	103° 38' 2.844 W	
10,200.0	0.00	0.00	10,182.4	260.0	230.0	393,423.19	757,898.99	32° 4' 46.815 N	103° 38' 2.844 W	
10,300.0	0.00	0.00	10,282.4	260.0	230.0	393,423.19	757,898.99	32° 4' 46.815 N	103° 38' 2.844 W	
10,400.0	0.00	0.00	10,382.4	260.0	230.0	393,423.19	757,898.99	32° 4' 46.815 N	103° 38' 2.844 W	
10,500.0	0.00	0.00	10,482.4	260.0	230.0	393,423.19	757,898.99	32° 4' 46.815 N	103° 38' 2.844 W	
10,600.0	0.00	0.00	10,582.4	260.0	230.0	393,423.19	757,898.99	32° 4' 46.815 N	103° 38' 2.844 W	
10,700.0	0.00	0.00	10,682.4	260.0	230.0	393,423.19	757,898.99	32° 4' 46.815 N	103° 38' 2.844 W	

Microsoft
Planning Report - Geographic

Database:	Old	Local Co-ordinate Reference:	Well Mesa #56H
Company:	BTA Oil Producers, LLC	TVD Reference:	WELL @ 3334.0usft (Original Well Elev)
Project:	Lea County, NM (NAD 83)	MD Reference:	WELL @ 3334.0usft (Original Well Elev)
Site:	Mesa Sec 1 & 12, T26S, R32E	North Reference:	Grid
Well:	Mesa #56H	Survey Calculation Method:	Minimum Curvature
Wellbore:	Wellbore #1		
Design:	Design #1		

Planned Survey										
Measured Depth (usft)	Inclination (°)	Azimuth (°)	Vertical Depth (usft)	+N/-S (usft)	+E/-W (usft)	Map Northing (usft)	Map Easting (usft)	Latitude	Longitude	
10,800.0	0.00	0.00	10,782.4	260.0	230.0	393,423.19	757,898.99	32° 4' 46.815 N	103° 38' 2.844 W	
10,900.0	0.00	0.00	10,882.4	260.0	230.0	393,423.19	757,898.99	32° 4' 46.815 N	103° 38' 2.844 W	
11,000.0	0.00	0.00	10,982.4	260.0	230.0	393,423.19	757,898.99	32° 4' 46.815 N	103° 38' 2.844 W	
11,100.0	0.00	0.00	11,082.4	260.0	230.0	393,423.19	757,898.99	32° 4' 46.815 N	103° 38' 2.844 W	
11,200.0	0.00	0.00	11,182.4	260.0	230.0	393,423.19	757,898.99	32° 4' 46.815 N	103° 38' 2.844 W	
11,300.0	0.00	0.00	11,282.4	260.0	230.0	393,423.19	757,898.99	32° 4' 46.815 N	103° 38' 2.844 W	
11,400.0	0.00	0.00	11,382.4	260.0	230.0	393,423.19	757,898.99	32° 4' 46.815 N	103° 38' 2.844 W	
11,500.0	0.00	0.00	11,482.4	260.0	230.0	393,423.19	757,898.99	32° 4' 46.815 N	103° 38' 2.844 W	
11,599.1	0.00	0.00	11,581.5	260.0	230.0	393,423.19	757,898.99	32° 4' 46.815 N	103° 38' 2.844 W	
11,600.0	0.00	0.00	11,582.4	260.0	230.0	393,423.19	757,898.99	32° 4' 46.815 N	103° 38' 2.844 W	
11,674.2	0.00	0.00	11,656.5	260.0	230.0	393,423.19	757,898.99	32° 4' 46.815 N	103° 38' 2.844 W	
11,700.0	3.10	179.10	11,682.3	259.3	230.0	393,422.49	757,899.00	32° 4' 46.808 N	103° 38' 2.844 W	
11,800.0	15.10	179.10	11,780.9	243.5	230.3	393,406.71	757,899.25	32° 4' 46.651 N	103° 38' 2.842 W	
11,900.0	27.10	179.10	11,874.0	207.6	230.8	393,370.78	757,899.82	32° 4' 46.296 N	103° 38' 2.838 W	
12,000.0	39.10	179.10	11,957.7	153.1	231.7	393,316.28	757,900.68	32° 4' 45.757 N	103° 38' 2.832 W	
12,100.0	51.10	179.10	12,028.1	82.4	232.8	393,245.59	757,901.79	32° 4' 45.057 N	103° 38' 2.825 W	
12,200.0	63.10	179.10	12,082.3	-1.4	234.1	393,161.80	757,903.11	32° 4' 44.228 N	103° 38' 2.816 W	
12,300.0	75.10	179.10	12,117.9	-94.6	235.6	393,068.57	757,904.59	32° 4' 43.305 N	103° 38' 2.806 W	
12,400.0	87.10	179.10	12,133.4	-193.2	237.2	392,969.97	757,906.14	32° 4' 42.329 N	103° 38' 2.795 W	
12,424.2	90.00	179.10	12,134.0	-217.4	237.5	392,945.80	757,906.52	32° 4' 42.090 N	103° 38' 2.792 W	
12,500.0	90.00	179.10	12,134.0	-293.2	238.7	392,869.99	757,907.72	32° 4' 41.340 N	103° 38' 2.784 W	
12,600.0	90.00	179.10	12,134.0	-393.2	240.3	392,770.01	757,909.30	32° 4' 40.350 N	103° 38' 2.773 W	
12,700.0	90.00	179.10	12,134.0	-493.2	241.9	392,670.02	757,910.88	32° 4' 39.361 N	103° 38' 2.763 W	
12,800.0	90.00	179.10	12,134.0	-593.2	243.5	392,570.04	757,912.45	32° 4' 38.371 N	103° 38' 2.752 W	
12,900.0	90.00	179.10	12,134.0	-693.2	245.0	392,470.06	757,914.03	32° 4' 37.382 N	103° 38' 2.741 W	
13,000.0	90.00	179.10	12,134.0	-793.2	246.6	392,370.07	757,915.61	32° 4' 36.392 N	103° 38' 2.730 W	
13,100.0	90.00	179.10	12,134.0	-893.1	248.2	392,270.09	757,917.19	32° 4' 35.403 N	103° 38' 2.719 W	
13,200.0	90.00	179.10	12,134.0	-993.1	249.8	392,170.11	757,918.77	32° 4' 34.413 N	103° 38' 2.708 W	
13,300.0	90.00	179.10	12,134.0	-1,093.1	251.4	392,070.12	757,920.34	32° 4' 33.424 N	103° 38' 2.698 W	
13,400.0	90.00	179.10	12,134.0	-1,193.1	252.9	391,970.14	757,921.92	32° 4' 32.434 N	103° 38' 2.687 W	
13,500.0	90.00	179.10	12,134.0	-1,293.1	254.5	391,870.15	757,923.50	32° 4' 31.445 N	103° 38' 2.676 W	
13,600.0	90.00	179.10	12,134.0	-1,393.1	256.1	391,770.17	757,925.08	32° 4' 30.455 N	103° 38' 2.665 W	
13,700.0	90.00	179.10	12,134.0	-1,493.1	257.7	391,670.19	757,926.66	32° 4' 29.466 N	103° 38' 2.654 W	
13,800.0	90.00	179.10	12,134.0	-1,593.1	259.2	391,570.20	757,928.23	32° 4' 28.476 N	103° 38' 2.644 W	
13,900.0	90.00	179.10	12,134.0	-1,693.0	260.8	391,470.22	757,929.81	32° 4' 27.487 N	103° 38' 2.633 W	
14,000.0	90.00	179.10	12,134.0	-1,793.0	262.4	391,370.24	757,931.39	32° 4' 26.497 N	103° 38' 2.622 W	
14,100.0	90.00	179.10	12,134.0	-1,893.0	264.0	391,270.25	757,932.97	32° 4' 25.508 N	103° 38' 2.611 W	
14,200.0	90.00	179.10	12,134.0	-1,993.0	265.6	391,170.27	757,934.55	32° 4' 24.518 N	103° 38' 2.600 W	
14,300.0	90.00	179.10	12,134.0	-2,093.0	267.1	391,070.28	757,936.12	32° 4' 23.529 N	103° 38' 2.590 W	
14,400.0	90.00	179.10	12,134.0	-2,193.0	268.7	390,970.30	757,937.70	32° 4' 22.539 N	103° 38' 2.579 W	
14,500.0	90.00	179.10	12,134.0	-2,293.0	270.3	390,870.32	757,939.28	32° 4' 21.550 N	103° 38' 2.568 W	
14,600.0	90.00	179.10	12,134.0	-2,393.0	271.9	390,770.33	757,940.86	32° 4' 20.560 N	103° 38' 2.557 W	
14,700.0	90.00	179.10	12,134.0	-2,492.9	273.4	390,670.35	757,942.44	32° 4' 19.571 N	103° 38' 2.546 W	
14,800.0	90.00	179.10	12,134.0	-2,592.9	275.0	390,570.36	757,944.01	32° 4' 18.581 N	103° 38' 2.536 W	
14,900.0	90.00	179.10	12,134.0	-2,692.9	276.6	390,470.38	757,945.59	32° 4' 17.592 N	103° 38' 2.525 W	
15,000.0	90.00	179.10	12,134.0	-2,792.9	278.2	390,370.40	757,947.17	32° 4' 16.602 N	103° 38' 2.514 W	
15,100.0	90.00	179.10	12,134.0	-2,892.9	279.8	390,270.41	757,948.75	32° 4' 15.613 N	103° 38' 2.503 W	
15,200.0	90.00	179.10	12,134.0	-2,992.9	281.3	390,170.43	757,950.33	32° 4' 14.623 N	103° 38' 2.492 W	
15,300.0	90.00	179.10	12,134.0	-3,092.9	282.9	390,070.45	757,951.90	32° 4' 13.634 N	103° 38' 2.482 W	
15,400.0	90.00	179.10	12,134.0	-3,192.9	284.5	389,970.46	757,953.48	32° 4' 12.644 N	103° 38' 2.471 W	
15,500.0	90.00	179.10	12,134.0	-3,292.8	286.1	389,870.48	757,955.06	32° 4' 11.655 N	103° 38' 2.460 W	
15,600.0	90.00	179.10	12,134.0	-3,392.8	287.7	389,770.49	757,956.64	32° 4' 10.665 N	103° 38' 2.449 W	
15,700.0	90.00	179.10	12,134.0	-3,492.8	289.2	389,670.51	757,958.22	32° 4' 9.676 N	103° 38' 2.438 W	
15,800.0	90.00	179.10	12,134.0	-3,592.8	290.8	389,570.53	757,959.79	32° 4' 8.686 N	103° 38' 2.427 W	
15,900.0	90.00	179.10	12,134.0	-3,692.8	292.4	389,470.54	757,961.37	32° 4' 7.697 N	103° 38' 2.417 W	

Microsoft
Planning Report - Geographic

Database:	Old	Local Co-ordinate Reference:	Well Mesa #56H
Company:	BTA Oil Producers, LLC	TVD Reference:	WELL @ 3334.0usft (Original Well Elev)
Project:	Lea County, NM (NAD 83)	MD Reference:	WELL @ 3334.0usft (Original Well Elev)
Site:	Mesa Sec 1 & 12, T26S, R32E	North Reference:	Grid
Well:	Mesa #56H	Survey Calculation Method:	Minimum Curvature
Wellbore:	Wellbore #1		
Design:	Design #1		

Planned Survey										
Measured Depth (usft)	Inclination (°)	Azimuth (°)	Vertical Depth (usft)	+N/-S (usft)	+E/-W (usft)	Map Northing (usft)	Map Easting (usft)	Latitude	Longitude	
16,000.0	90.00	179.10	12,134.0	-3,792.8	294.0	389,370.56	757,962.95	32° 4' 6.707 N	103° 38' 2.406 W	
16,100.0	90.00	179.10	12,134.0	-3,892.8	295.5	389,270.57	757,964.53	32° 4' 5.718 N	103° 38' 2.395 W	
16,200.0	90.00	179.10	12,134.0	-3,992.8	297.1	389,170.59	757,966.11	32° 4' 4.728 N	103° 38' 2.384 W	
16,300.0	90.00	179.10	12,134.0	-4,092.7	298.7	389,070.61	757,967.68	32° 4' 3.739 N	103° 38' 2.373 W	
16,400.0	90.00	179.10	12,134.0	-4,192.7	300.3	388,970.62	757,969.26	32° 4' 2.749 N	103° 38' 2.363 W	
16,500.0	90.00	179.10	12,134.0	-4,292.7	301.9	388,870.64	757,970.84	32° 4' 1.760 N	103° 38' 2.352 W	
16,600.0	90.00	179.10	12,134.0	-4,392.7	303.4	388,770.66	757,972.42	32° 4' 0.770 N	103° 38' 2.341 W	
16,700.0	90.00	179.10	12,134.0	-4,492.7	305.0	388,670.67	757,974.00	32° 3' 59.781 N	103° 38' 2.330 W	
16,800.0	90.00	179.10	12,134.0	-4,592.7	306.6	388,570.69	757,975.57	32° 3' 58.791 N	103° 38' 2.319 W	
16,900.0	90.00	179.10	12,134.0	-4,692.7	308.2	388,470.70	757,977.15	32° 3' 57.802 N	103° 38' 2.309 W	
17,000.0	90.00	179.10	12,134.0	-4,792.7	309.7	388,370.72	757,978.73	32° 3' 56.812 N	103° 38' 2.298 W	
17,100.0	90.00	179.10	12,134.0	-4,892.6	311.3	388,270.74	757,980.31	32° 3' 55.823 N	103° 38' 2.287 W	
17,200.0	90.00	179.10	12,134.0	-4,992.6	312.9	388,170.75	757,981.89	32° 3' 54.833 N	103° 38' 2.276 W	
17,300.0	90.00	179.10	12,134.0	-5,092.6	314.5	388,070.77	757,983.46	32° 3' 53.844 N	103° 38' 2.265 W	
17,400.0	90.00	179.10	12,134.0	-5,192.6	316.1	387,970.79	757,985.04	32° 3' 52.854 N	103° 38' 2.255 W	
17,500.0	90.00	179.10	12,134.0	-5,292.6	317.6	387,870.80	757,986.62	32° 3' 51.865 N	103° 38' 2.244 W	
17,600.0	90.00	179.10	12,134.0	-5,392.6	319.2	387,770.82	757,988.20	32° 3' 50.875 N	103° 38' 2.233 W	
17,700.0	90.00	179.10	12,134.0	-5,492.6	320.8	387,670.83	757,989.78	32° 3' 49.886 N	103° 38' 2.222 W	
17,800.0	90.00	179.10	12,134.0	-5,592.6	322.4	387,570.85	757,991.36	32° 3' 48.896 N	103° 38' 2.211 W	
17,900.0	90.00	179.10	12,134.0	-5,692.5	323.9	387,470.87	757,992.93	32° 3' 47.907 N	103° 38' 2.200 W	
18,000.0	90.00	179.10	12,134.0	-5,792.5	325.5	387,370.88	757,994.51	32° 3' 46.917 N	103° 38' 2.190 W	
18,100.0	90.00	179.10	12,134.0	-5,892.5	327.1	387,270.90	757,996.09	32° 3' 45.928 N	103° 38' 2.179 W	
18,200.0	90.00	179.10	12,134.0	-5,992.5	328.7	387,170.91	757,997.67	32° 3' 44.938 N	103° 38' 2.168 W	
18,300.0	90.00	179.10	12,134.0	-6,092.5	330.3	387,070.93	757,999.25	32° 3' 43.949 N	103° 38' 2.157 W	
18,400.0	90.00	179.10	12,134.0	-6,192.5	331.8	386,970.95	758,000.82	32° 3' 42.959 N	103° 38' 2.146 W	
18,500.0	90.00	179.10	12,134.0	-6,292.5	333.4	386,870.96	758,002.40	32° 3' 41.970 N	103° 38' 2.136 W	
18,600.0	90.00	179.10	12,134.0	-6,392.5	335.0	386,770.98	758,003.98	32° 3' 40.980 N	103° 38' 2.125 W	
18,700.0	90.00	179.10	12,134.0	-6,492.4	336.6	386,671.00	758,005.56	32° 3' 39.991 N	103° 38' 2.114 W	
18,800.0	90.00	179.10	12,134.0	-6,592.4	338.2	386,571.01	758,007.14	32° 3' 39.001 N	103° 38' 2.103 W	
18,900.0	90.00	179.10	12,134.0	-6,692.4	339.7	386,471.03	758,008.71	32° 3' 38.012 N	103° 38' 2.092 W	
19,000.0	90.00	179.10	12,134.0	-6,792.4	341.3	386,371.04	758,010.29	32° 3' 37.022 N	103° 38' 2.082 W	
19,100.0	90.00	179.10	12,134.0	-6,892.4	342.9	386,271.06	758,011.87	32° 3' 36.033 N	103° 38' 2.071 W	
19,200.0	90.00	179.10	12,134.0	-6,992.4	344.5	386,171.08	758,013.45	32° 3' 35.043 N	103° 38' 2.060 W	
19,300.0	90.00	179.10	12,134.0	-7,092.4	346.0	386,071.09	758,015.03	32° 3' 34.054 N	103° 38' 2.049 W	
19,400.0	90.00	179.10	12,134.0	-7,192.4	347.6	385,971.11	758,016.60	32° 3' 33.064 N	103° 38' 2.038 W	
19,500.0	90.00	179.10	12,134.0	-7,292.3	349.2	385,871.13	758,018.18	32° 3' 32.075 N	103° 38' 2.028 W	
19,600.0	90.00	179.10	12,134.0	-7,392.3	350.8	385,771.14	758,019.76	32° 3' 31.085 N	103° 38' 2.017 W	
19,700.0	90.00	179.10	12,134.0	-7,492.3	352.4	385,671.16	758,021.34	32° 3' 30.096 N	103° 38' 2.006 W	
19,800.0	90.00	179.10	12,134.0	-7,592.3	353.9	385,571.17	758,022.92	32° 3' 29.106 N	103° 38' 1.995 W	
19,900.0	90.00	179.10	12,134.0	-7,692.3	355.5	385,471.19	758,024.49	32° 3' 28.117 N	103° 38' 1.984 W	
20,000.0	90.00	179.10	12,134.0	-7,792.3	357.1	385,371.21	758,026.07	32° 3' 27.127 N	103° 38' 1.974 W	
20,100.0	90.00	179.10	12,134.0	-7,892.3	358.7	385,271.22	758,027.65	32° 3' 26.138 N	103° 38' 1.963 W	
20,200.0	90.00	179.10	12,134.0	-7,992.3	360.2	385,171.24	758,029.23	32° 3' 25.148 N	103° 38' 1.952 W	
20,300.0	90.00	179.10	12,134.0	-8,092.2	361.8	385,071.25	758,030.81	32° 3' 24.159 N	103° 38' 1.941 W	
20,400.0	90.00	179.10	12,134.0	-8,192.2	363.4	384,971.27	758,032.38	32° 3' 23.169 N	103° 38' 1.930 W	
20,500.0	90.00	179.10	12,134.0	-8,292.2	365.0	384,871.29	758,033.96	32° 3' 22.180 N	103° 38' 1.919 W	
20,600.0	90.00	179.10	12,134.0	-8,392.2	366.6	384,771.30	758,035.54	32° 3' 21.190 N	103° 38' 1.909 W	
20,700.0	90.00	179.10	12,134.0	-8,492.2	368.1	384,671.32	758,037.12	32° 3' 20.201 N	103° 38' 1.898 W	
20,800.0	90.00	179.10	12,134.0	-8,592.2	369.7	384,571.34	758,038.70	32° 3' 19.211 N	103° 38' 1.887 W	
20,900.0	90.00	179.10	12,134.0	-8,692.2	371.3	384,471.35	758,040.27	32° 3' 18.222 N	103° 38' 1.876 W	
21,000.0	90.00	179.10	12,134.0	-8,792.2	372.9	384,371.37	758,041.85	32° 3' 17.232 N	103° 38' 1.865 W	
21,100.0	90.00	179.10	12,134.0	-8,892.1	374.4	384,271.38	758,043.43	32° 3' 16.243 N	103° 38' 1.855 W	
21,200.0	90.00	179.10	12,134.0	-8,992.1	376.0	384,171.40	758,045.01	32° 3' 15.253 N	103° 38' 1.844 W	
21,300.0	90.00	179.10	12,134.0	-9,092.1	377.6	384,071.42	758,046.59	32° 3' 14.264 N	103° 38' 1.833 W	
21,400.0	90.00	179.10	12,134.0	-9,192.1	379.2	383,971.43	758,048.16	32° 3' 13.274 N	103° 38' 1.822 W	

Microsoft
Planning Report - Geographic

Database:	Old	Local Co-ordinate Reference:	Well Mesa #56H
Company:	BTA Oil Producers, LLC	TVD Reference:	WELL @ 3334.0usft (Original Well Elev)
Project:	Lea County, NM (NAD 83)	MD Reference:	WELL @ 3334.0usft (Original Well Elev)
Site:	Mesa Sec 1 & 12, T26S, R32E	North Reference:	Grid
Well:	Mesa #56H	Survey Calculation Method:	Minimum Curvature
Wellbore:	Wellbore #1		
Design:	Design #1		

Planned Survey										
Measured Depth (usft)	Inclination (°)	Azimuth (°)	Vertical Depth (usft)	+N/-S (usft)	+E/-W (usft)	Map Northing (usft)	Map Easting (usft)	Latitude	Longitude	
21,500.0	90.00	179.10	12,134.0	-9,292.1	380.8	383,871.45	758,049.74	32° 3' 12.285 N	103° 38' 1.811 W	
21,600.0	90.00	179.10	12,134.0	-9,392.1	382.3	383,771.46	758,051.32	32° 3' 11.295 N	103° 38' 1.801 W	
21,700.0	90.00	179.10	12,134.0	-9,492.1	383.9	383,671.48	758,052.90	32° 3' 10.306 N	103° 38' 1.790 W	
21,800.0	90.00	179.10	12,134.0	-9,592.1	385.5	383,571.50	758,054.48	32° 3' 9.316 N	103° 38' 1.779 W	
21,900.0	90.00	179.10	12,134.0	-9,692.0	387.1	383,471.51	758,056.05	32° 3' 8.327 N	103° 38' 1.768 W	
22,000.0	90.00	179.10	12,134.0	-9,792.0	388.6	383,371.53	758,057.63	32° 3' 7.337 N	103° 38' 1.757 W	
22,100.0	90.00	179.10	12,134.0	-9,892.0	390.2	383,271.55	758,059.21	32° 3' 6.348 N	103° 38' 1.747 W	
22,200.0	90.00	179.10	12,134.0	-9,992.0	391.8	383,171.56	758,060.79	32° 3' 5.358 N	103° 38' 1.736 W	
22,300.0	90.00	179.10	12,134.0	-10,092.0	393.4	383,071.58	758,062.37	32° 3' 4.369 N	103° 38' 1.725 W	
22,400.0	90.00	179.10	12,134.0	-10,192.0	395.0	382,971.59	758,063.94	32° 3' 3.379 N	103° 38' 1.714 W	
22,500.0	90.00	179.10	12,134.0	-10,292.0	396.5	382,871.61	758,065.52	32° 3' 2.390 N	103° 38' 1.703 W	
22,574.4	90.00	179.10	12,134.0	-10,366.4	397.7	382,797.20	758,066.70	32° 3' 1.654 N	103° 38' 1.695 W	

Design Targets										
Target Name	Dip Angle (°)	Dip Dir. (°)	TVD (usft)	+N/-S (usft)	+E/-W (usft)	Northing (usft)	Easting (usft)	Latitude	Longitude	
- hit/miss target										
- Shape										
Mesa #56H BHL	0.00	0.00	12,134.0	-10,366.4	397.7	382,797.20	758,066.70	32° 3' 1.654 N	103° 38' 1.695 W	
- plan hits target center										
- Point										

BTA Oil Producers, LLC

WELL DETAILS: Mesa #56H					
	Ground Level	3334.0	Latitude	Longitude	
	Easting	757669.00	32° 4' 44.257 N	103° 38' 5.537 W	
	Northing	393163.20			
+N/-S	+E/-W	0.0			

T
G
M

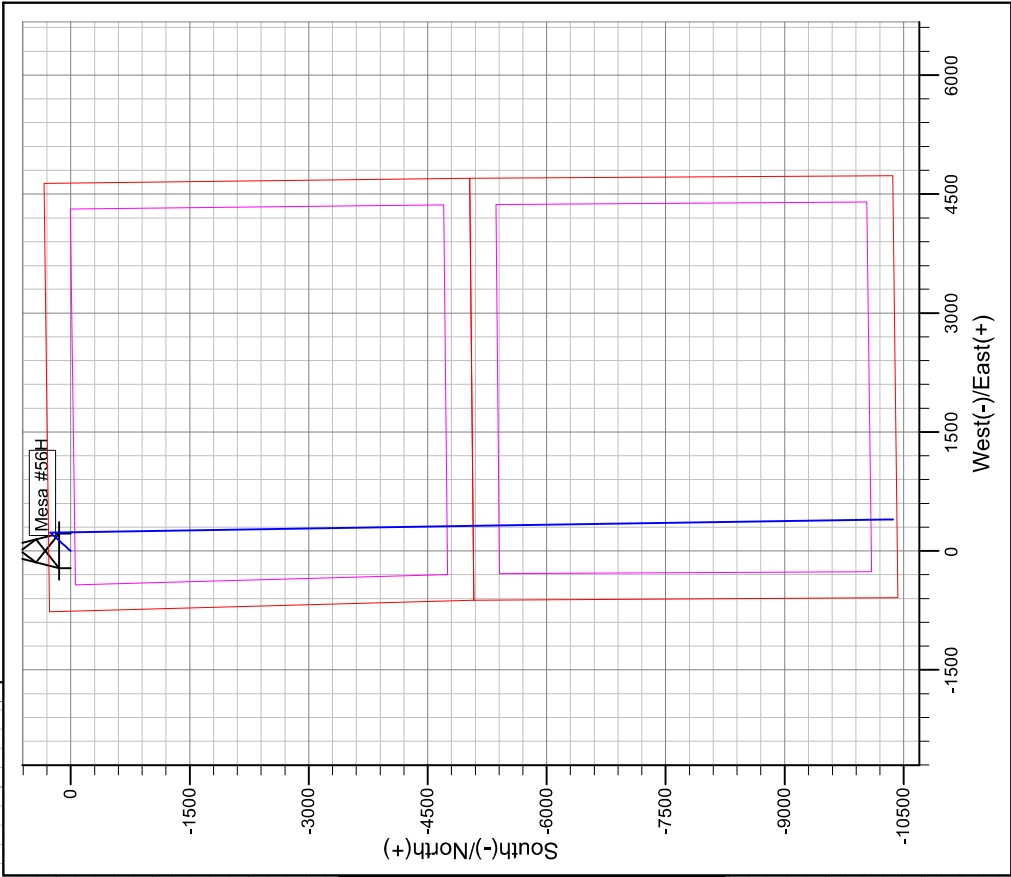
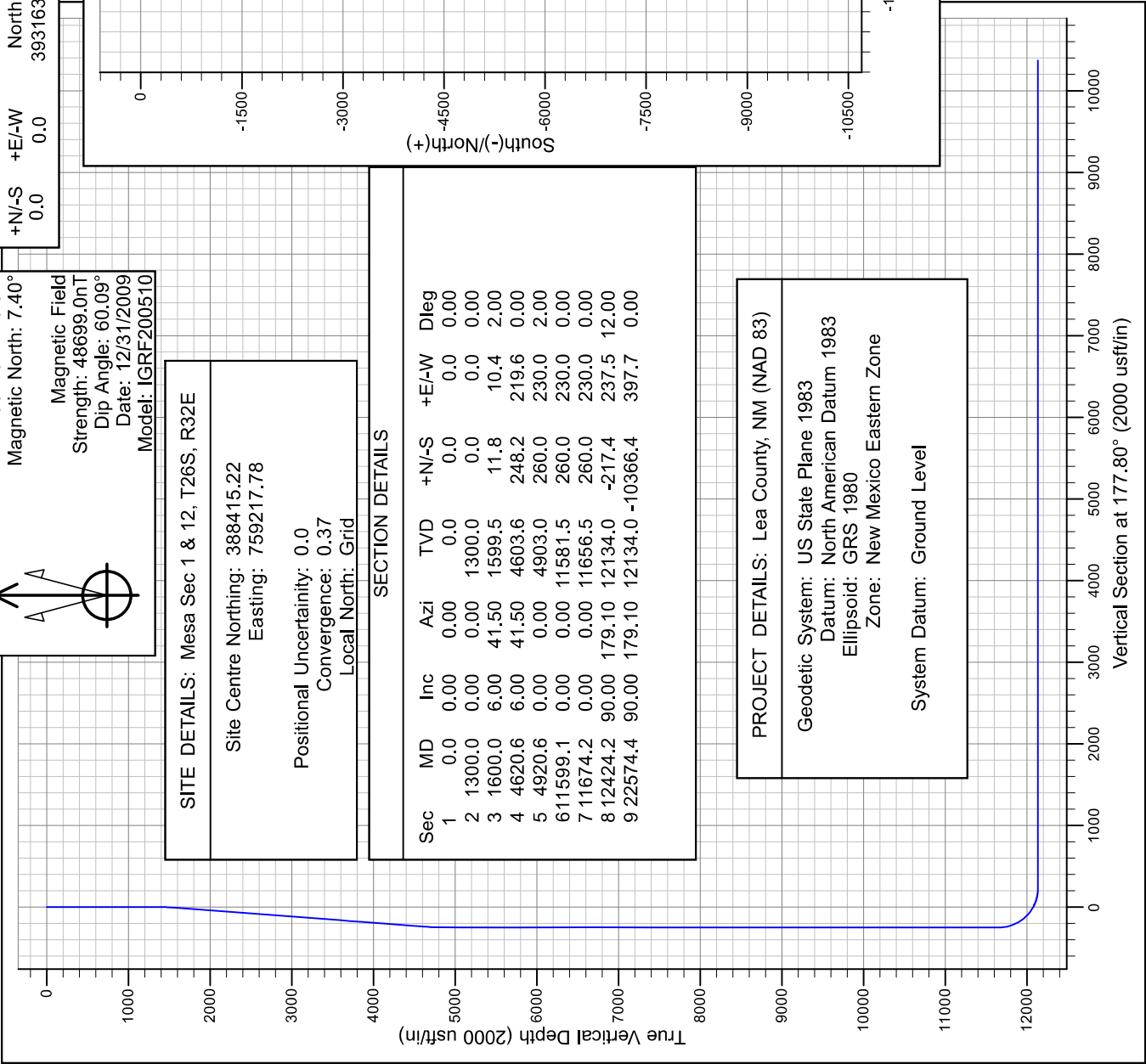
Azimuths to Grid North
True North: -0.37°
Magnetic North: 7.40°

Magnetic Field
Strength: 48699.0nT
Dip Angle: 60.09°
Date: 12/31/2009
Model: IGRF200510

SITE DETAILS: Mesa Sec 1 & 12, T26S, R32E
Site Centre Northing: 388415.22 Easting: 759217.78
Positional Uncertainty: 0.0 Convergence: 0.37 Local North: Grid

SECTION DETAILS									
Sec	MD	Inc	Azi	TVD	+N/-S	+E/-W	Dleg		
1	0.0	0.00	0.00	0.0	0.0	0.0	0.00		
2	1300.0	0.00	0.00	1300.0	0.0	0.0	0.00		
3	1600.0	6.00	41.50	1599.5	11.8	10.4	2.00		
4	4620.6	6.00	41.50	4603.6	248.2	219.6	0.00		
5	4920.6	0.00	0.00	4903.0	260.0	230.0	2.00		
6	11599.1	0.00	0.00	11581.5	260.0	230.0	0.00		
7	11674.2	0.00	0.00	11656.5	260.0	230.0	0.00		
8	12424.2	90.00	179.10	12134.0	-217.4	237.5	12.00		
9	22574.4	90.00	179.10	12134.0	-10366.4	397.7	0.00		

PROJECT DETAILS: Lea County, NM (NAD 83)
Geodetic System: US State Plane 1983 Datum: North American Datum 1983 Ellipsoid: GRS 1980 Zone: New Mexico Eastern Zone
System Datum: Ground Level





TOTAL LENGTH = 78'-3/8"

TUBING SPOOL

SW-TCM

13-5/8" 5M x 7-1/16" 10M
5-1/2" PP SEAL
w/ (2) 1-13/16" 10M SSO

SW-MB SPOOL ASSEMBLY

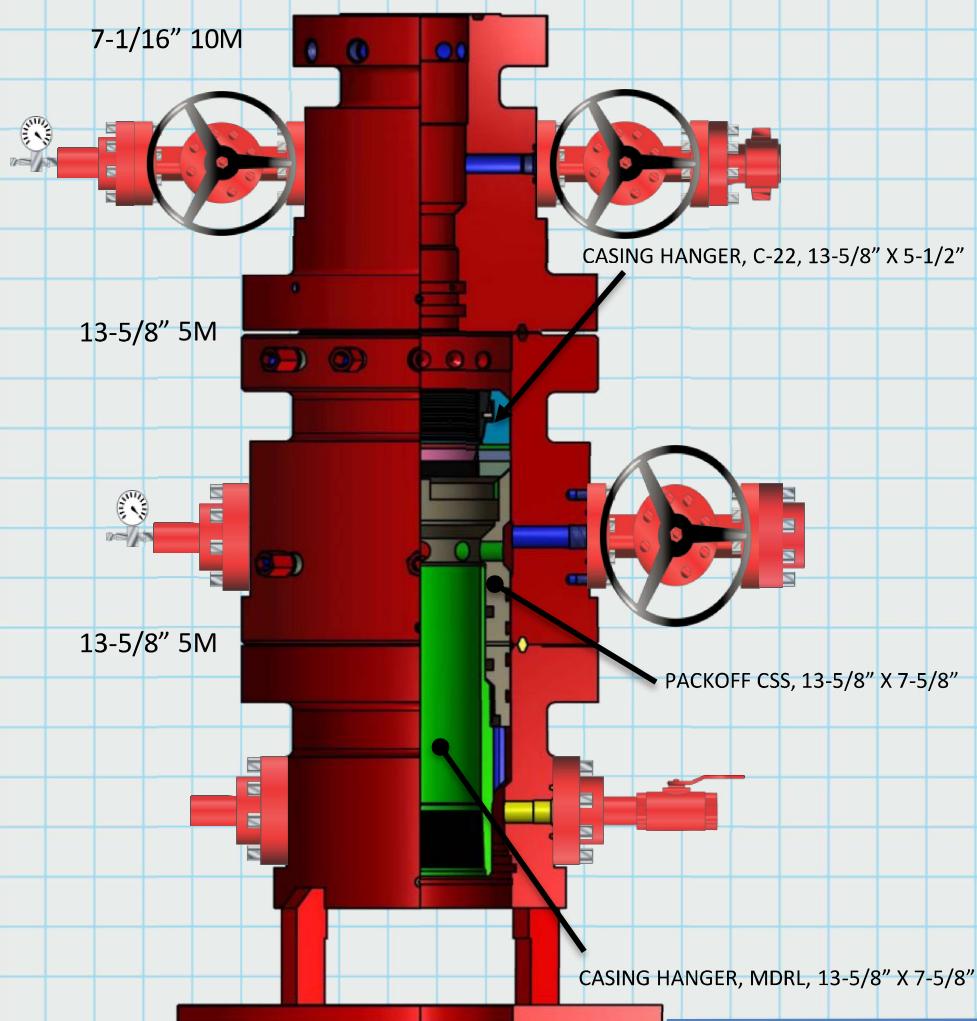
UPPER MBH

13-5/8" 5M x 13-5/8" 5M
w/ (2) 2-1/16" 5M SSO

CASING HEAD ASSEMBLY

LOWER MBH

13-5/8" 5M x 10-3/4" SOW
w/ (2) 2-1/16" 5M SSO



10-3/4" SOW x 7-5/8" x 5-1/2"





U.S. Department of the Interior
BUREAU OF LAND MANAGEMENT

SUPO Data Report

04/16/2021

APD ID: 10400057683

Submission Date: 06/04/2020

Highlighted data
reflects the most
recent changes

Operator Name: BTA OIL PRODUCERS LLC

Well Name: MESA 8105 1-12 FEDERAL

Well Number: 56H

[Show Final Text](#)

Well Type: OIL WELL

Well Work Type: Drill

Section 1 - Existing Roads

Will existing roads be used? YES

Existing Road Map:

20110284_Mesa_8105_1_12_Fed_56H_Vicinity_Topographical__Access_Rd_20200806125402.pdf

Existing Road Purpose: ACCESS

Row(s) Exist? NO

ROW ID(s)

ID:

Do the existing roads need to be improved? NO

Existing Road Improvement Description:

Existing Road Improvement Attachment:

Section 2 - New or Reconstructed Access Roads

Will new roads be needed? NO

Section 3 - Location of Existing Wells

Existing Wells Map? YES

Attach Well map:

20110284_Mesa_8105_1_12_Fed_56H_1_Mile_Radius__C102_20200806125420.pdf

Operator Name: BTA OIL PRODUCERS LLC**Well Name:** MESA 8105 1-12 FEDERAL**Well Number:** 56H

Section 4 - Location of Existing and/or Proposed Production Facilities

Submit or defer a Proposed Production Facilities plan? DEFER**Estimated Production Facilities description:** Defer, CTB will be sundried at a later date.

Section 5 - Location and Types of Water Supply

Water Source Table

Water source type: OTHER**Describe type:** PIT

Water source use type: SURFACE CASING
STIMULATION
DUST CONTROL
INTERMEDIATE/PRODUCTION
CASING

Source latitude:**Source longitude:****Source datum:****Water source permit type:** PRIVATE CONTRACT**Water source transport method:** TRUCKING**Source land ownership:** FEDERAL**Source transportation land ownership:** PRIVATE**Water source volume (barrels):** 100000**Source volume (acre-feet):** 12.88930963**Source volume (gal):** 4200000**Water source and transportation map:**

MESA_8105_FEDERAL_WATER_TRANSPORT_MAP_20200527085530.pdf

Water source comments: Water Pit is in SESE QUARTER QUARTER OF SEC 1 ; T26S ; R32E**New water well?** N

New Water Well Info

Operator Name: BTA OIL PRODUCERS LLC

Well Name: MESA 8105 1-12 FEDERAL

Well Number: 56H

Well latitude:

Well Longitude:

Well datum:

Well target aquifer:

Est. depth to top of aquifer(ft):

Est thickness of aquifer:

Aquifer comments:

Aquifer documentation:

Well depth (ft):

Well casing type:

Well casing outside diameter (in.):

Well casing inside diameter (in.):

New water well casing?

Used casing source:

Drilling method:

Drill material:

Grout material:

Grout depth:

Casing length (ft.):

Casing top depth (ft.):

Well Production type:

Completion Method:

Water well additional information:

State appropriation permit:

Additional information attachment:

Section 6 - Construction Materials

Using any construction materials: YES

Construction Materials description: Caliche used for construction of the drilling pad and access road will be obtained from the closest existing caliche pit as approved by the BLM or from prevailing deposits found under the location. If there is not sufficient material available, caliche will be purchased from the nearest caliche pit located in the SESE Quarter Quarter of Section 4 T26S R32E Lea County, NM.

Construction Materials source location attachment:

Section 7 - Methods for Handling Waste

Waste type: DRILLING

Waste content description: Drilling fluids and cuttings.

Amount of waste: 4164 barrels

Waste disposal frequency : One Time Only

Safe containment description: All drilling fluids will be stored safely and disposed of properly.

Safe containmant attachment:

Waste disposal type: HAUL TO COMMERCIAL FACILITY **Disposal location ownership:** COMMERCIAL

Disposal type description:

Disposal location description: Trucked to a state approved disposal facility.

Operator Name: BTA OIL PRODUCERS LLC**Well Name:** MESA 8105 1-12 FEDERAL**Well Number:** 56H**Waste type:** SEWAGE**Waste content description:** Human waste and grey water.**Amount of waste:** 1000 gallons**Waste disposal frequency :** One Time Only**Safe containment description:** Waste material will be stored safely and disposed of properly.**Safe containmant attachment:****Waste disposal type:** HAUL TO COMMERCIAL FACILITY **Disposal location ownership:** COMMERCIAL**Disposal type description:****Disposal location description:** Trucked to a state approved disposal facility.**Waste type:** GARBAGE**Waste content description:** Trash**Amount of waste:** 500 pounds**Waste disposal frequency :** One Time Only**Safe containment description:** Trash produced during drilling and completion operations will be collected in a trash container and disposed of properly.**Safe containmant attachment:****Waste disposal type:** HAUL TO COMMERCIAL FACILITY **Disposal location ownership:** COMMERCIAL**Disposal type description:****Disposal location description:** Trucked to a state approved disposal facility.

Reserve Pit

Reserve Pit being used? NO**Temporary disposal of produced water into reserve pit?** NO**Reserve pit length (ft.)** **Reserve pit width (ft.)****Reserve pit depth (ft.)** **Reserve pit volume (cu. yd.)****Is at least 50% of the reserve pit in cut?****Reserve pit liner****Reserve pit liner specifications and installation description**

Cuttings Area

Cuttings Area being used? NO**Are you storing cuttings on location?** N

Operator Name: BTA OIL PRODUCERS LLC**Well Name:** MESA 8105 1-12 FEDERAL**Well Number:** 56H**Description of cuttings location****Cuttings area length (ft.)****Cuttings area width (ft.)****Cuttings area depth (ft.)****Cuttings area volume (cu. yd.)****Is at least 50% of the cuttings area in cut?****WCuttings area liner****Cuttings area liner specifications and installation description****Section 8 - Ancillary Facilities****Are you requesting any Ancillary Facilities?:** N**Ancillary Facilities attachment:****Comments:****Section 9 - Well Site Layout****Well Site Layout Diagram:**

Rig_Layout_20190930140859.pdf

20130448_Mesa_8105_1_12_Fed_56H_REVISED_Well_Pad_20200928134209.pdf

Comments:**Section 10 - Plans for Surface Reclamation****Type of disturbance:** New Surface Disturbance**Multiple Well Pad Name:** MESA 8105 1-12 FEDERAL**Multiple Well Pad Number:** 56H and 57H**Recontouring attachment:****Drainage/Erosion control construction:** During construction proper erosion control methods will be used to control erosion, runoff, and siltation of the surrounding area.**Drainage/Erosion control reclamation:** Proper erosion control methods will be used on the area to control erosion, runoff, and siltation of the surrounding area.**Well pad proposed disturbance (acres):** 3.95**Well pad interim reclamation (acres):** 0.46**Well pad long term disturbance (acres):** 3.49**Road proposed disturbance (acres):** 0**Road interim reclamation (acres):** 0**Road long term disturbance (acres):** 0**Powerline proposed disturbance (acres):** 0**Powerline interim reclamation (acres):** 0**Powerline long term disturbance (acres):** 0**Pipeline proposed disturbance (acres):** 0**Pipeline interim reclamation (acres):** 0**Pipeline long term disturbance (acres):** 0**Other proposed disturbance (acres):** 0**Other interim reclamation (acres):** 0**Other long term disturbance (acres):** 0**Total interim reclamation:** 0.46

Operator Name: BTA OIL PRODUCERS LLC**Well Name:** MESA 8105 1-12 FEDERAL**Well Number:** 56H**Total proposed disturbance:** 3.95**Total long term disturbance:** 3.49**Disturbance Comments:**

Reconstruction method: The areas planned for interim reclamation will then be recontoured to the original contour if feasible, or if not feasible, to an interim contour that blends with the surrounding topography as much as possible. Where applicable, the fill material of the well pad will be backfilled into the cut to bring the area back to the original contour. The interim cut and fill slopes prior to re-seeding will not be steeper than a 3:1 ratio, unless the adjacent native topography is steeper. Note: Constructed slopes may be much steeper during drilling, but will be recontoured to the above ratios during interim reclamation.

Topsoil redistribution: Topsoil will be evenly respread and aggressively revegetated over the entire disturbed area not needed for all-weather operations.

Soil treatment: To seed the area, the proper BLM seed mixture, free of noxious weeds, will be used. Final seedbed preparation will consist of contour cultivating to a depth of 4 to 6 inches within 24 hours prior to seeding, dozer tracking, or other imprinting in order to break the soil crust and create seed germination micro-sites.

Existing Vegetation at the well pad: The historic climax plant community is a grassland dominated by black grama, dropseeds, and blue stems with sand sage and shinnery oak distributed evenly throughout. Current landscape displays mesquite, shinnery oak, yucca, desert sage, fourwing saltbush, snakeweed, and bunch grasses.

Existing Vegetation at the well pad attachment:

Existing Vegetation Community at the road: Refer to "Existing Vegetation at the well pad"

Existing Vegetation Community at the road attachment:

Existing Vegetation Community at the pipeline: Refer to "Existing Vegetation at the well pad"

Existing Vegetation Community at the pipeline attachment:

Existing Vegetation Community at other disturbances: Refer to "Existing Vegetation at the well pad"

Existing Vegetation Community at other disturbances attachment:

Non native seed used? N

Non native seed description:

Seedling transplant description:

Will seedlings be transplanted for this project? N

Seedling transplant description attachment:

Will seed be harvested for use in site reclamation?

Seed harvest description:

Seed harvest description attachment:

Operator Name: BTA OIL PRODUCERS LLC**Well Name:** MESA 8105 1-12 FEDERAL**Well Number:** 56H**Seed Management****Seed Table****Seed Summary****Total pounds/Acre:****Seed Type****Pounds/Acre****Seed reclamation attachment:****Operator Contact/Responsible Official Contact Info****First Name:** Chad**Last Name:** Smith**Phone:** (432)682-3753**Email:** csmith@btaoil.com**Seedbed prep:****Seed BMP:****Seed method:****Existing invasive species?** N**Existing invasive species treatment description:****Existing invasive species treatment attachment:****Weed treatment plan description:** No invasive species present. Standard regular maintenance to maintain a clear location and road.**Weed treatment plan attachment:****Monitoring plan description:** Identify areas supporting weeds prior to construction; prevent the introduction and spread of weeds from construction equipment during construction; and contain weed seeds and propagules by preventing segregated topsoil from being spread to adjacent areas. No invasive species present. Standard regular maintenance to maintain a clear location and road.**Monitoring plan attachment:****Success standards:** To maintain all disturbed areas as per Gold Book standards.**Pit closure description:** N/A**Pit closure attachment:****Section 11 - Surface Ownership**

Operator Name: BTA OIL PRODUCERS LLC**Well Name:** MESA 8105 1-12 FEDERAL**Well Number:** 56H**Disturbance type:** WELL PAD**Describe:****Surface Owner:****Other surface owner description:****BIA Local Office:****BOR Local Office:****COE Local Office:****DOD Local Office:****NPS Local Office:****State Local Office:****Military Local Office:****USFWS Local Office:****Other Local Office:****USFS Region:****USFS Forest/Grassland:****USFS Ranger District:**

Section 12 - Other Information

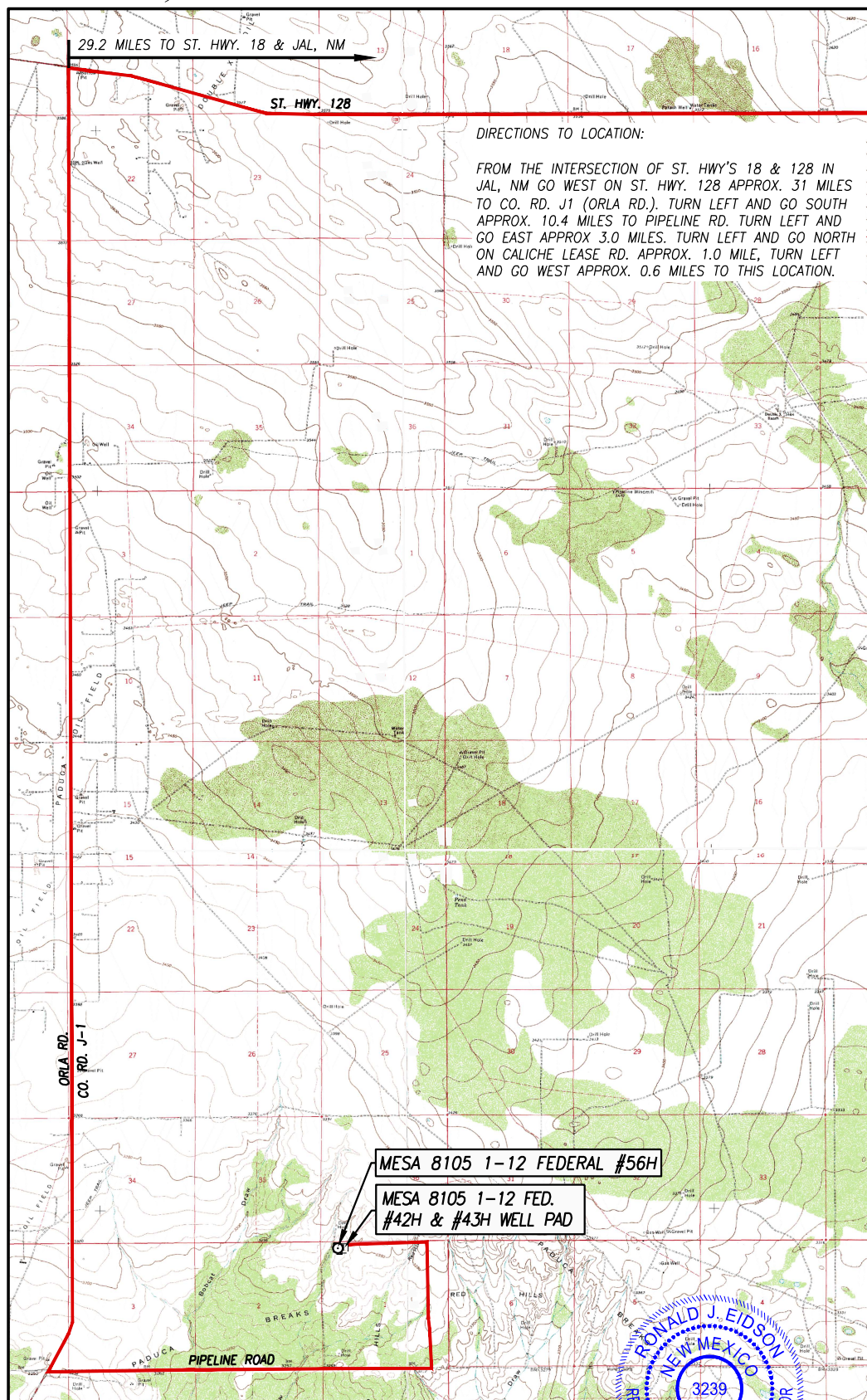
Right of Way needed? N**Use APD as ROW?****ROW Type(s):**

ROW Applications

SUPO Additional Information:**Use a previously conducted onsite?** Y**Previous Onsite information:** Onsite conducted by McKenna Ryder BLM on 2/26/2020

Other SUPO Attachment

VICINITY, TOPOGRAPHIC AND ACCESS ROAD MAP



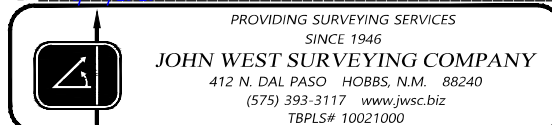
CONTOUR INTERVAL: PADUCA BREAKS SW, N.M. - 10'
 BELL, N.M. - 10', PADUCA BREAKS EAST, N.M. - 10'
 SCALE: 1" = 5280'

SEC. 1 TWP. 26-S RGE. 32-E
 COUNTY LEA STATE NEW MEXICO
 DESCRIPTION 280' FNL & 760' FWL
 ELEVATION 3335'
 OPERATOR BTA OIL PRODUCERS, LLC
 LEASE MESA 8105 1-12 FEDERAL
 U.S.G.S. TOPOGRAPHIC MAP
 RELEASED BY THE U.S. GEOLOGICAL SURVEY
 N.M.P.M.

I, RONALD J. EIDSON, NEW MEXICO PROFESSIONAL SURVEYOR NO. 3239, DO HEREBY CERTIFY THAT THIS SURVEY PLAT AND THE ACTUAL SURVEY ON THE GROUND UPON WHICH IT IS BASED WERE PERFORMED BY ME OR UNDER MY DIRECT SUPERVISION; THAT I AM RESPONSIBLE FOR THIS SURVEY; THAT THIS SURVEY MEETS THE MINIMUM STANDARDS FOR SURVEYING IN NEW MEXICO; AND THAT IT IS TRUE AND CORRECT TO THE BEST OF MY KNOWLEDGE AND BELIEF.

RONALD J. EIDSON

DATE: 08/04/2020



DISTRICT I
1625 N. French Dr., Hobbs, NM 88240
Phone: (575) 393-6161 Fax: (575) 393-0720

DISTRICT II
811 S. First St., Artesia, NM 88210
Phone: (575) 748-1283 Fax: (505) 748-9720

DISTRICT III
1000 Rio Brazos Road, Aztec, NM 87410
Phone: (505) 334-6178 Fax: (505) 334-6170

DISTRICT IV
1220 S. St. Francis Dr., Santa Fe, NM 87505
Phone: (505) 476-3460 Fax: (505) 476-3462

State of New Mexico
Energy, Minerals & Natural Resources Department
OIL CONSERVATION DIVISION
1220 South St. Francis Dr.
Santa Fe, New Mexico 87505

Form C-102
Revised August 1, 2011
Submit one copy to appropriate
District Office

□ AMENDED REPORT

WELL LOCATION AND ACREAGE DEDICATION PLAT

API Number	Pool Code	Pool Name
		WC-025 ; Wolfcamp Sand
Property Code	Property Name	Well Number
	MESA 8105 1-12 FEDERAL	56H
OGRID No.	Operator Name	Elevation
260297	BTA OIL PRODUCERS, LLC	3335'

Surface Location

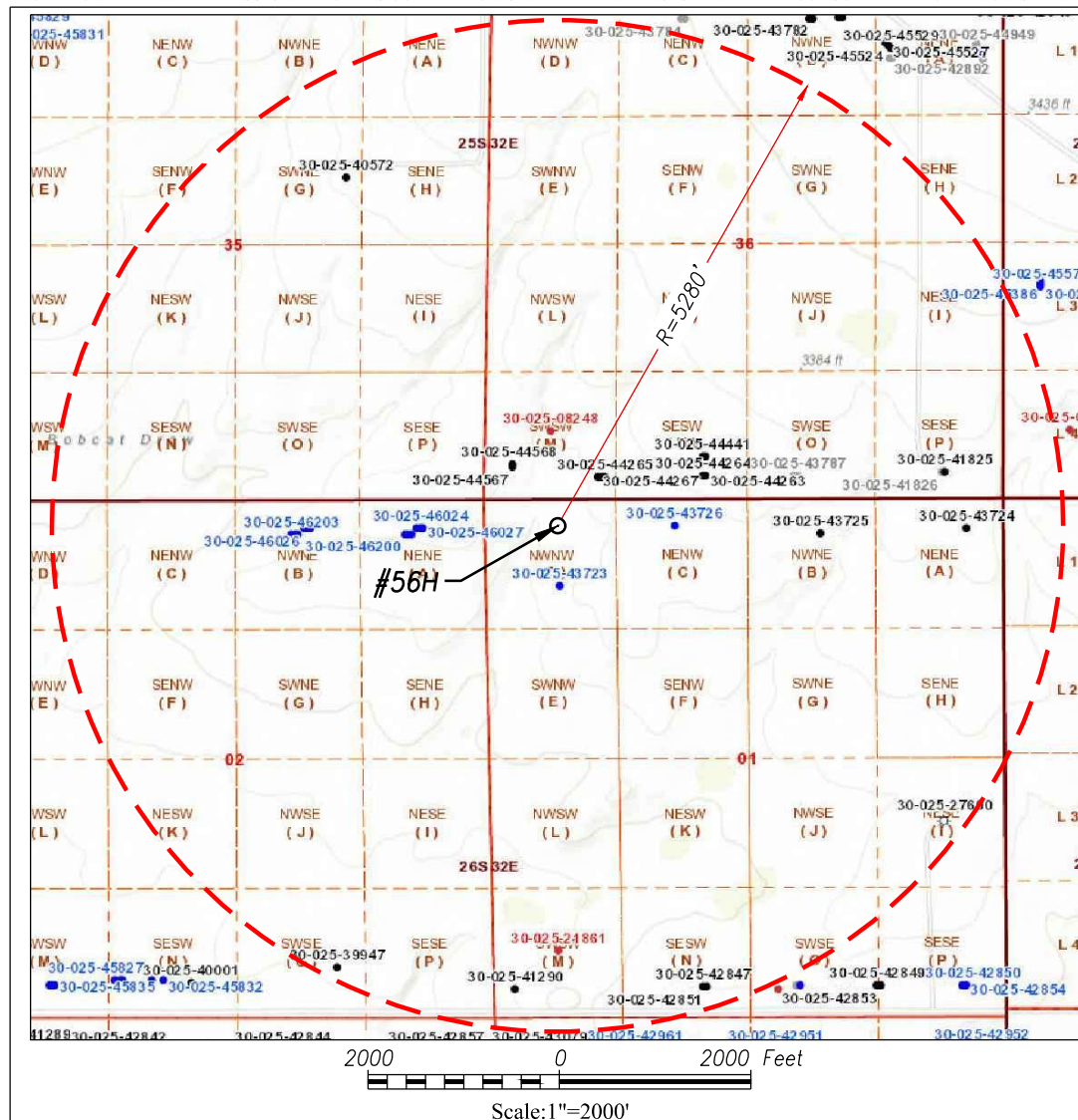
UL or lot No.	Section	Township	Range	Lot Idn	Feet from the	North/South line	Feet from the	East/West line	County
D	1	26-S	32-E		280	NORTH	760	WEST	LEA

Bottom Hole Location If Different From Surface

UL or lot No.	Section	Township	Range	Lot Idn	Feet from the	North/South line	Feet from the	East/West line	County
M	12	26-S	32-E		50	SOUTH	990	WEST	LEA

Dedicated Acres	Joint or Infill	Consolidation Code	Order No.
320			

NO ALLOWABLE WILL BE ASSIGNED TO THIS COMPLETION UNTIL ALL INTERESTS HAVE BEEN CONSOLIDATED OR A NON-STANDARD UNIT HAS BEEN APPROVED BY THE DIVISION



LEGEND

○ DENOTES PROPOSED WELL

SURVEYOR CERTIFICATION

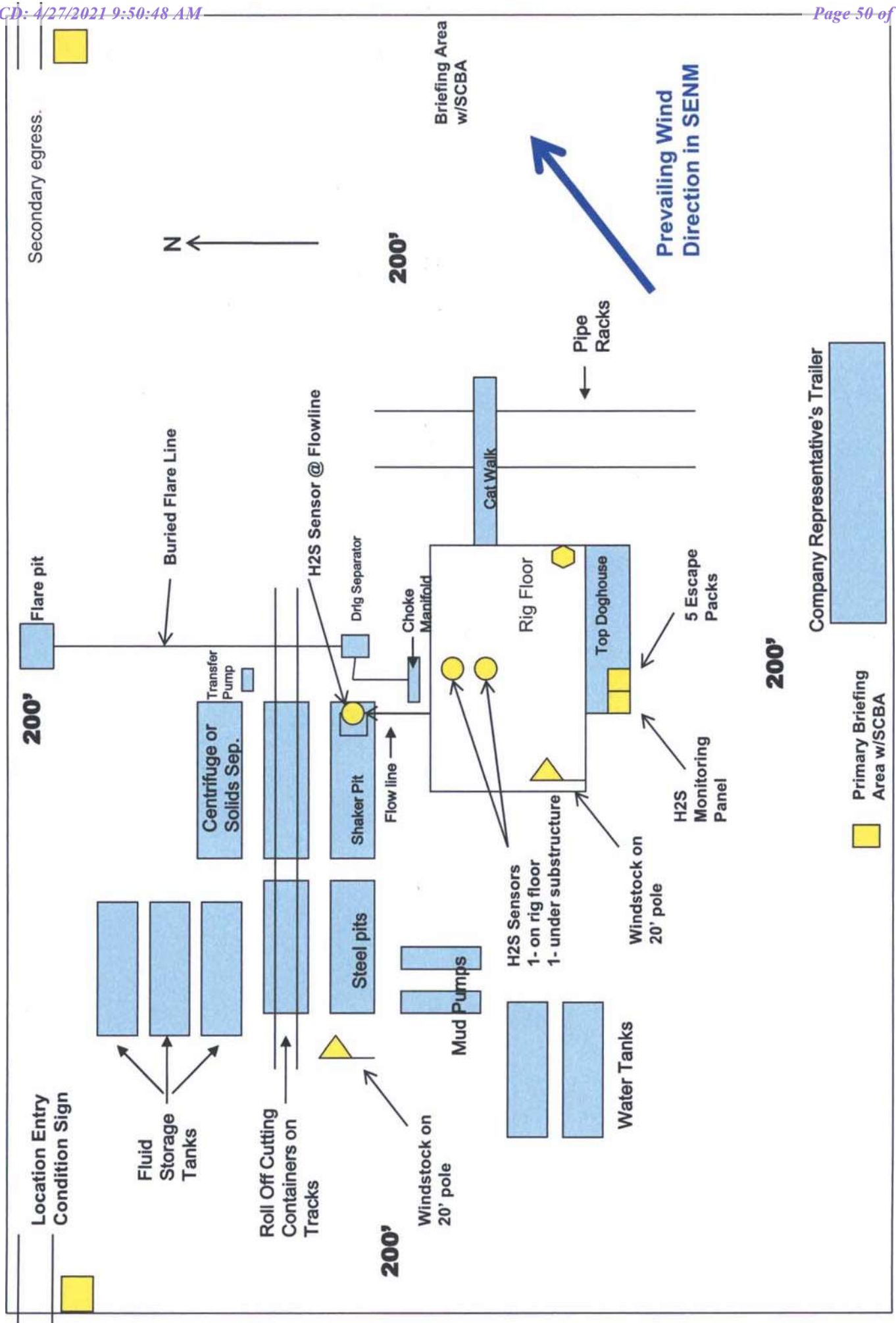
I hereby certify that the well location shown on this plat was plotted from field notes of original surveys made by me or under my supervision, and that the same is true and correct to the best of my belief.

Date of Survey: 3239
Signature & Seal of Professional Surveyor:

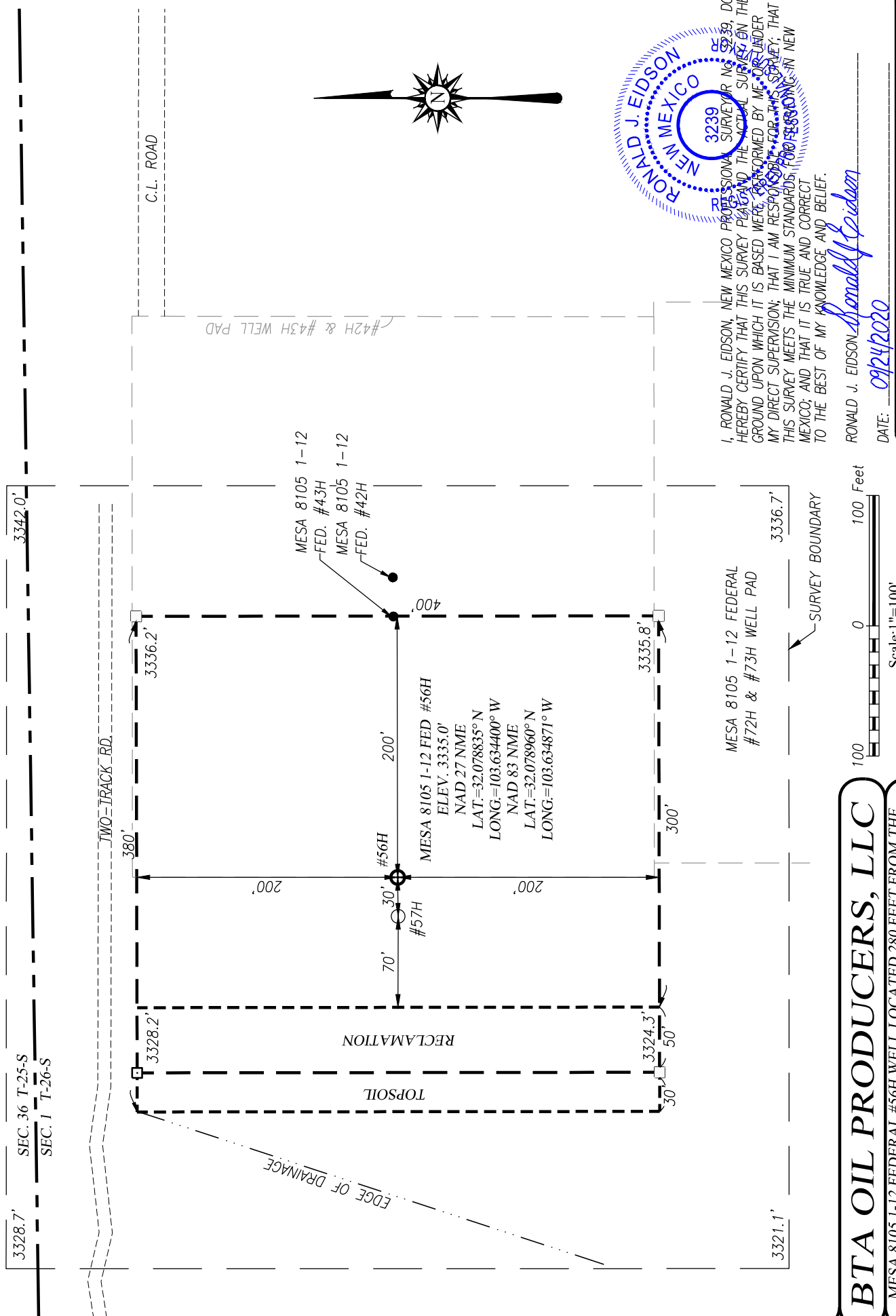
RONALD J. EIDSON
JUNE 23, 2020
REGISTERED PROFESSIONAL SURVEYOR
Ronald J. Eidson 08/04/2020
Certificate Number Gary G. Eidson 12641
Ronald J. Eidson 3239
ACK REL. W.O.:19111252 JWSC W.O.: 20.11.0284



BTA OIL PRODUCERS, LLC
WATER TRANSPORTATION MAP
MESA 8105 FEDERAL WATER TRANSPORT MAP
SEC 1; T26S ; R32E (Water Pit is in SESE QUARTER QUARTER)
LEA COUNTY, NM



WELL SITE PLAN



I, RONALD J. EIDSON, NEW MEXICO PROFESSIONAL SURVEYOR No. 3239, DO HEREBY CERTIFY THAT THIS SURVEY PLAN AND THE ACTUAL SURVEY ON THE GROUND UPON WHICH IT IS BASED WERE PERFORMED BY ME OR UNDER MY DIRECT SUPERVISION; THAT I AM RESPONSIBLE FOR THIS SURVEY; THAT THIS SURVEY MEETS THE MINIMUM STANDARDS FOR SURVEYING IN NEW MEXICO; AND THAT IT IS TRUE AND CORRECT TO THE BEST OF MY KNOWLEDGE AND BELIEF.

RONALD J. EIDSON, *Ronald J. Eidson*

DATE: 09/24/2020



PROVIDING SURVEYING SERVICES
SINCE 1946

JOHN WEST SURVEYING COMPANY

412 N. DAL PASO HOBBS, N.M. 88240
(575) 393-3117 www.jwsc.biz
TBPLS# 10021000

NOTE:

SEE "TOPOGRAPHICAL AND ACCESS ROAD
MAP" FOR PROPOSED ROAD LOCATION.

BTA OIL PRODUCERS, LLC

MESA 8105 1-12 FEDERAL #56H WELL LOCATED 280 FEET FROM THE
NORTH LINE AND 760 FEET FROM THE WEST LINE OF
SECTION 1, TOWNSHIP 26 SOUTH, RANGE 32 EAST, N.M.P.M.,
LEA COUNTY, NEW MEXICO

Survey Date: 6/23/2020 CAD Date: 9/24/2020 Drawn By: ACK

W.O. No.: 20130448 Rev: . Rel. W.O.: 20110284 Sheet 1 of 1



U.S. Department of the Interior
BUREAU OF LAND MANAGEMENT

PWD Data Report

04/16/2021

APD ID: 10400057683

Submission Date: 06/04/2020

Operator Name: BTA OIL PRODUCERS LLC

Well Name: MESA 8105 1-12 FEDERAL

Well Number: 56H

Well Type: OIL WELL

Well Work Type: Drill

Section 1 - General

Would you like to address long-term produced water disposal? NO

Section 2 - Lined Pits

Would you like to utilize Lined Pit PWD options? N

Produced Water Disposal (PWD) Location:

PWD surface owner:

PWD disturbance (acres):

Lined pit PWD on or off channel:

Lined pit PWD discharge volume (bbl/day):

Lined pit specifications:

Pit liner description:

Pit liner manufacturers information:

Precipitated solids disposal:

Describe precipitated solids disposal:

Precipitated solids disposal permit:

Lined pit precipitated solids disposal schedule:

Lined pit precipitated solids disposal schedule attachment:

Lined pit reclamation description:

Lined pit reclamation attachment:

Leak detection system description:

Leak detection system attachment:

Operator Name: BTA OIL PRODUCERS LLC

Well Name: MESA 8105 1-12 FEDERAL

Well Number: 56H

Lined pit Monitor description:

Lined pit Monitor attachment:

Lined pit: do you have a reclamation bond for the pit?

Is the reclamation bond a rider under the BLM bond?

Lined pit bond number:

Lined pit bond amount:

Additional bond information attachment:

Section 3 - Unlined Pits

Would you like to utilize Unlined Pit PWD options? N

Produced Water Disposal (PWD) Location:

PWD disturbance (acres):

PWD surface owner:

Unlined pit PWD on or off channel:

Unlined pit PWD discharge volume (bbl/day):

Unlined pit specifications:

Precipitated solids disposal:

Describe precipitated solids disposal:

Precipitated solids disposal permit:

Unlined pit precipitated solids disposal schedule:

Unlined pit precipitated solids disposal schedule attachment:

Unlined pit reclamation description:

Unlined pit reclamation attachment:

Unlined pit Monitor description:

Unlined pit Monitor attachment:

Do you propose to put the produced water to beneficial use?

Beneficial use user confirmation:

Estimated depth of the shallowest aquifer (feet):

Does the produced water have an annual average Total Dissolved Solids (TDS) concentration equal to or less than that of the existing water to be protected?

TDS lab results:

Geologic and hydrologic evidence:

State authorization:

Unlined Produced Water Pit Estimated percolation:

Unlined pit: do you have a reclamation bond for the pit?

Operator Name: BTA OIL PRODUCERS LLC**Well Name:** MESA 8105 1-12 FEDERAL**Well Number:** 56H**Is the reclamation bond a rider under the BLM bond?****Unlined pit bond number:****Unlined pit bond amount:****Additional bond information attachment:**

Section 4 - Injection

Would you like to utilize Injection PWD options? N**Produced Water Disposal (PWD) Location:****PWD surface owner:****PWD disturbance (acres):****Injection PWD discharge volume (bbl/day):****Injection well mineral owner:****Injection well type:****Injection well number:****Injection well name:****Assigned injection well API number?****Injection well API number:****Injection well new surface disturbance (acres):****Minerals protection information:****Mineral protection attachment:****Underground Injection Control (UIC) Permit?****UIC Permit attachment:**

Section 5 - Surface Discharge

Would you like to utilize Surface Discharge PWD options? N**Produced Water Disposal (PWD) Location:****PWD surface owner:****PWD disturbance (acres):****Surface discharge PWD discharge volume (bbl/day):****Surface Discharge NPDES Permit?****Surface Discharge NPDES Permit attachment:****Surface Discharge site facilities information:****Surface discharge site facilities map:**

Section 6 - Other

Would you like to utilize Other PWD options? N**Produced Water Disposal (PWD) Location:****PWD surface owner:****PWD disturbance (acres):****Other PWD discharge volume (bbl/day):**

Operator Name: BTA OIL PRODUCERS LLC

Well Name: MESA 8105 1-12 FEDERAL

Well Number: 56H

Other PWD type description:

Other PWD type attachment:

Have other regulatory requirements been met?

Other regulatory requirements attachment:



U.S. Department of the Interior
BUREAU OF LAND MANAGEMENT

Bond Info Data Report

04/16/2021

APD ID: 10400057683

Submission Date: 06/04/2020

Highlighted data
reflects the most
recent changes

Operator Name: BTA OIL PRODUCERS LLC

Well Name: MESA 8105 1-12 FEDERAL

Well Number: 56H

[Show Final Text](#)

Well Type: OIL WELL

Well Work Type: Drill

Bond Information

Federal/Indian APD: FED

BLM Bond number: NMB001711

BIA Bond number:

Do you have a reclamation bond? NO

Is the reclamation bond a rider under the BLM bond?

Is the reclamation bond BLM or Forest Service?

BLM reclamation bond number:

Forest Service reclamation bond number:

Forest Service reclamation bond attachment:

Reclamation bond number:

Reclamation bond amount:

Reclamation bond rider amount:

Additional reclamation bond information attachment:

DISTRICT I

1625 N. French Dr., Hobbs, NM 88240
Phone: (575) 393-6161 Fax: (575) 393-0720

DISTRICT II

811 S. First St., Artesia, NM 88210
Phone: (575) 748-1283 Fax: (575) 748-9720

DISTRICT III

1000 Rio Brazos Road, Aztec, NM 87410
Phone: (505) 334-6178 Fax: (505) 334-6170

DISTRICT IV

1220 S. St. Francis Dr., Santa Fe, NM 87505
Phone: (505) 476-3460 Fax: (505) 476-3462

State of New Mexico
Energy, Minerals & Natural Resources Department
OIL CONSERVATION DIVISION
1220 South St. Francis Dr.
Santa Fe, New Mexico 87505

Form C-102

Revised August 1, 2011

Submit one copy to appropriate
District Office

□ AMENDED REPORT

WELL LOCATION AND ACREAGE DEDICATION PLAT

API Number 30-025-48960	Pool Code 98158	Pool Name WC-025 G-09 S253236A; UPR WOLFCAMP
Property Code 327174	Property Name MESA 8105 1-12 FEDERAL	Well Number 56H
OGRID No. 260297	Operator Name BTA OIL PRODUCERS, LLC	Elevation 3335'

Surface Location

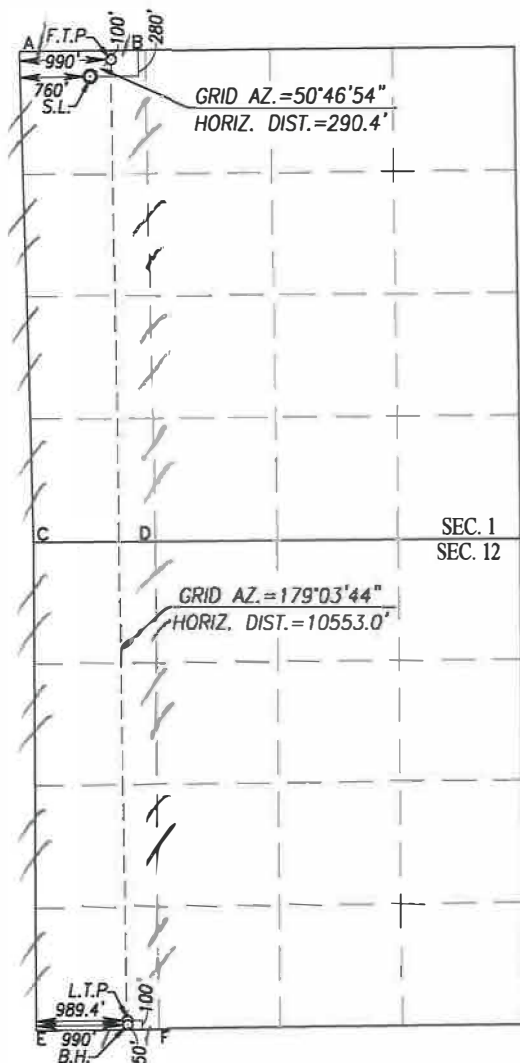
UL or lot No.	Section	Township	Range	Lot Idn	Feet from the	North/South line	Feet from the	East/West line	County
D	1	26-S	32-E		280	NORTH	760	WEST	LEA

Bottom Hole Location If Different From Surface

UL or lot No.	Section	Township	Range	Lot Idn	Feet from the	North/South line	Feet from the	East/West line	County
M	12	26-S	32-E		50	SOUTH	990	WEST	LEA

Dedicated Acres	Joint or Infill	Consolidation Code	Order No.
320			

NO ALLOWABLE WILL BE ASSIGNED TO THIS COMPLETION UNTIL ALL INTERESTS HAVE BEEN CONSOLIDATED OR A NON-STANDARD UNIT HAS BEEN APPROVED BY THE DIVISION



SCALE: 1"=2000'

GEODETIC COORDINATES

NAD 27 NME

SURFACE LOCATION

Y= 393105.7 N

X= 716482.5 E

LAT.=32.078835° N

LONG.=103.634400° W

FIRST TAKE POINT

NAD 27 NME

Y= 393289.2 N

X= 716707.4 E

LAT.=32.079336° N

LONG.=103.633670° W

GEODETIC COORDINATES

NAD 83 NME

SURFACE LOCATION

Y= 393163.2 N

X= 757669.0 E

LAT.=32.078960° N

LONG.=103.634871° W

FIRST TAKE POINT

NAD 83 NME

Y= 393346.8 N

X= 757894.0 E

LAT.=32.079461° N

LONG.=103.634141° W

CORNER COORDINATES TABLE

NAD 27 NME

A - Y= 393374.5 N, X= 715714.9 E

B - Y= 393394.8 N, X= 717081.4 E

C - Y= 388025.8 N, X= 715861.6 E

D - Y= 388039.4 N, X= 717192.6 E

E - Y= 382677.2 N, X= 715890.2 E

F - Y= 382694.3 N, X= 717222.3 E

CORNER COORDINATES TABLE

NAD 83 NME

A - Y= 393432.1 N, X= 756901.4 E

B - Y= 393452.3 N, X= 758267.9 E

C - Y= 388083.2 N, X= 757048.4 E

D - Y= 388096.8 N, X= 758379.4 E

E - Y= 382734.5 N, X= 757077.2 E

F - Y= 382751.6 N, X= 758409.4 E

LAST TAKE POINT

NAD 27 NME

Y= 382789.9 N

X= 716878.8 E

LAT.=32.050472° N

LONG.=103.633336° W

LAST TAKE POINT

NAD 83 NME

Y= 382847.1 N

X= 758065.8 E

LAT.=32.050597° N

LONG.=103.633806° W

BOTTOM HOLE LOCATION

NAD 27 NME

Y= 382739.9 N

X= 716879.6 E

LAT.=32.050334° N

LONG.=103.633335° W

BOTTOM HOLE LOCATION

NAD 83 NME

Y= 382797.2 N

X= 758066.7 E

LAT.=32.050459° N

LONG.=103.633804° W

OPERATOR CERTIFICATION

I hereby certify that the information herein is true and complete to the best of my knowledge and belief, and that this organization either owns a working interest or unleased mineral interest in the land including the proposed bottom hole location or has a right to drill this well at this location pursuant to a contract with an owner of such mineral or working interest, or to a voluntary pooling agreement or a compulsory pooling order heretofore entered by the division.

8/6/2020

Date

Sammy Hajar

Printed Name

SHAJAR@BTAOIL.COM

E-mail Address

SURVEYOR CERTIFICATION

I hereby certify that the well location shown on this plat was plotted from field notes of a well survey made by me or under my supervision, and that the same is true and correct to the best of my belief.

Date of Survey

3239

Signature & Seal of Professional Surveyor:

Certificate Number

Gary G. Eidson 12641

Ronald J. Eidson 3239

ACK REL W.O.:19111252

JWSC W.O.: 20 11.0284

District I
1625 N. French Dr., Hobbs, NM 88240
District II
811 S. First St., Artesia, NM 88210
District III
1000 Rio Brazos Road, Aztec, NM 87410
District IV
1220 S. St. Francis Dr., Santa Fe, NM 87505

State of New Mexico
Energy, Minerals and Natural Resources Department
Oil Conservation Division
1220 South St. Francis Dr.
Santa Fe, NM 87505

Submit Original
to Appropriate
District Office

GAS CAPTURE PLAN

Date: 5/27/2020

☒ Original Operator & OGRID No.: 260297
☐ Amended - Reason for Amendment: _____

This Gas Capture Plan outlines actions to be taken by the Operator to reduce well/production facility flaring/venting for new completion (new drill, recomple to new zone, re-frac) activity.

Note: Form C-129 must be submitted and approved prior to exceeding 60 days allowed by Rule (Subsection A of 19.15.18.12 NMAC).

Well(s)/Production Facility – Name of facility

The well(s) that will be located at the production facility are shown in the table below.

Well Name	API	Well Location (ULSTR)	Footages	Expected MCF/D	Flared or Vented	Comments
MESA 8105 1-12	30-025-48960	SEC 1 ; 26S ; 32E	280 FNL 760 FWL	2000	Flared	Battery Connected
FEDERAL 56H						To ETP System

Gathering System and Pipeline Notification

Well(s) will be connected to a production facility after flowback operations are complete, if gas transporter system is in place. The gas produced from production facility is dedicated to Gas Transporter and will be connected to Gas Transporter low/high pressure gathering system located in LEA County, New Mexico. It will require 0 ' of pipeline to (ETP) connect the facility to low/high pressure gathering system. Operator provides (periodically) to Gas Transporter a drilling, completion and estimated first production date for wells that are scheduled to be drilled in the foreseeable future. In addition, Operator and Gas Transporter have periodic conference calls to discuss changes to drilling and completion schedules. Gas from these wells will be processed at Gas Transporter Processing Plant located in Sec.____, Twn.____, Rng.____, _____ County, New Mexico. The actual flow of the gas will be based on compression operating parameters and gathering system pressures.

Flowback Strategy

After the fracture treatment/completion operations, well(s) will be produced to temporary production tanks and gas will be flared or vented. During flowback, the fluids and sand content will be monitored. When the produced fluids contain minimal sand, the wells will be turned to production facilities. Gas sales should start as soon as the wells start flowing through the production facilities, unless there are operational issues on Gas Transporter system at that time. Based on current information, it is Operator's belief the system can take this gas upon completion of the well(s).

Safety requirements during cleanout operations from the use of underbalanced air cleanout systems may necessitate that sand and non-pipeline quality gas be vented and/or flared rather than sold on a temporary basis.

Alternatives to Reduce Flaring

Below are alternatives considered from a conceptual standpoint to reduce the amount of gas flared.

- Power Generation – On lease
 - Only a portion of gas is consumed operating the generator, remainder of gas will be flared
- Compressed Natural Gas – On lease
 - Gas flared would be minimal, but might be uneconomical to operate when gas volume declines
- NGL Removal – On lease
 - Plants are expensive, residue gas is still flared, and uneconomical to operate when gas volume declines

District I

1625 N. French Dr., Hobbs, NM 88240
 Phone:(575) 393-6161 Fax:(575) 393-0720

District II

811 S. First St., Artesia, NM 88210
 Phone:(575) 748-1283 Fax:(575) 748-9720

District III

1000 Rio Brazos Rd., Aztec, NM 87410
 Phone:(505) 334-6178 Fax:(505) 334-6170

District IV

1220 S. St Francis Dr., Santa Fe, NM 87505
 Phone:(505) 476-3470 Fax:(505) 476-3462

State of New Mexico
Energy, Minerals and Natural Resources
Oil Conservation Division
1220 S. St Francis Dr.
Santa Fe, NM 87505

CONDITIONS

Action 25767

CONDITIONS

Operator: BTA OIL PRODUCERS, LLC 104 S Pecos Midland, TX 79701	OGRID: 260297
	Action Number: 25767
	Action Type: [C-101] BLM - Federal/Indian Land Lease (Form 3160-3)

CONDITIONS

Created By	Condition	Condition Date
pkautz	Will require a File As Drilled C-102 and a Directional Survey with the C-104	6/3/2021
pkautz	Once the well is spud, to prevent ground water contamination through whole or partial conduits from the surface, the operator shall drill without interruption through the fresh water zone or zones and shall immediately set in cement the water protection string	6/3/2021