

Submit 1 Copy To Appropriate District Office
District I - (575) 393-6161
1625 N. French Dr., Hobbs, NM 88240
District II - (575) 748-1283
811 S. First St., Artesia, NM 88210
District III - (505) 334-6178
1000 Rio Brazos Rd., Aztec, NM 87410
District IV - (505) 476-3460
1220 S. St. Francis Dr., Santa Fe, NM 87505

State of New Mexico
Energy, Minerals and Natural Resources

Form C-103
Revised July 18, 2013

OIL CONSERVATION DIVISION
1220 South St. Francis Dr.
Santa Fe, NM 87505

WELL API NO. 30-015-22307
5. Indicate Type of Lease STATE [X] FEE []
6. State Oil & Gas Lease No.
7. Lease Name or Unit Agreement Name Bogle State Com
8. Well Number #1
9. OGRID Number 013837
10. Pool name or Wildcat Diamond Mound; Upper Penn (G)
11. Elevation (Show whether DR, RKB, RT, GR, etc.) 3578'

SUNDRY NOTICES AND REPORTS ON WELLS
(DO NOT USE THIS FORM FOR PROPOSALS TO DRILL OR TO DEEPEN OR PLUG BACK TO A DIFFERENT RESERVOIR. USE "APPLICATION FOR PERMIT" (FORM C-101) FOR SUCH PROPOSALS.)
1. Type of Well: Oil Well [] Gas Well [X] Other
2. Name of Operator Mack Energy Corporation
3. Address of Operator P.O. Box 960 Artesia, NM 88210
4. Well Location
Unit Letter I : 2560 feet from the N line and 660 feet from the E line
Section 2 Township 16S Range 27E NMPM County Eddy
11. Elevation (Show whether DR, RKB, RT, GR, etc.) 3578'

12. Check Appropriate Box to Indicate Nature of Notice, Report or Other Data

NOTICE OF INTENTION TO:
PERFORM REMEDIAL WORK [] PLUG AND ABANDON [X]
TEMPORARILY ABANDON [] CHANGE PLANS []
PULL OR ALTER CASING [] MULTIPLE COMPL []
DOWNHOLE COMMINGLE []
CLOSED-LOOP SYSTEM []
OTHER: []
SUBSEQUENT REPORT OF:
REMEDIAL WORK [] ALTERING CASING []
COMMENCE DRILLING OPNS. [] P AND A [X]
CASING/CEMENT JOB []
OTHER: []

13. Describe proposed or completed operations. (Clearly state all pertinent details, and give pertinent dates, including estimated date of starting any proposed work). SEE RULE 19.15.7.14 NMAC. For Multiple Completions: Attach wellbore diagram of proposed completion or recompletion.

05/24/21 MIRU plugging equipment. Dug out cellar. ND wellhead, NU BOP. RIH w/ tbg, tagged @ existing CIBP w/ 35' cmt on top @ 2758'. Circ'd hole w/ 44 BBLS MLF. Pressure tested 4 1/2" csg, held 500 PSI. Perf'd @ 1682'. Pressured up on perfs to 500 PSI. Spotted 25 sx class C cmt @ 1732-1354'. WOC. 05/25/21 Tagged plug @ 1344'. Perf'd csg @ 855'. Pressured up on perfs to 500 PSI. Spotted 25 sx class C cmt @ 905-527'. WOC. Tagged plug @ 582'. Perf'd csg @ 395'. ND BOP, NU well head. Sqz'd 245 sx class C cmt @ 395' & circulated to surface on 4 1/2", 8 5/8", & 13 3/8" csg. Rigged down & moved off. 05/26/21 Moved in backhoe and welder, Cut off well head, notified Gilbert Cordero w/ OCD via picture text message of cmt at surface. Welded on "Above Ground Dry Hole Marker". Backfilled cellar, cut off deadmen, cleaned location, & moved off.

Spud Date: [] Rig Release Date: []
Approved for plugging of well bore only. Liability under bond is retained pending Location cleanup & receipt of C-103Q (Subsequent Report of Well Plugging) which may be found at OCD Web Page, OCD Permitting @ www.emnrd.state.nm.us

I hereby certify that the information above is true and complete to the best of my knowledge and belief.

SIGNATURE Delilah Flores TITLE Regulatory Technician I DATE 5/28/2021

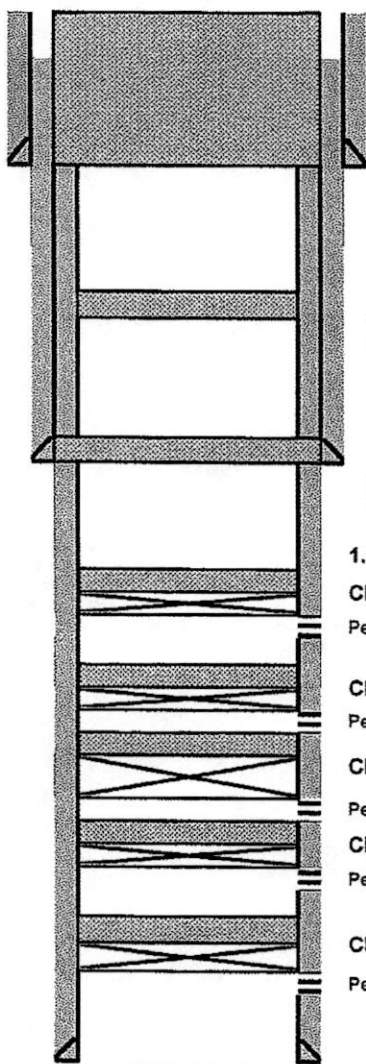
Type or print name Delilah Flores E-mail address: delilah@mec.com PHONE: 575-748-1288
For State Use Only

APPROVED BY: [] TITLE Staff Manager DATE 6/16/2021
Conditions of Approval (if any):

Mack Energy		PLUGGED	
Author:	BCM & Associates, INC	Well No.	#1
Well Name	Bogle State Com	API #:	30-015-22307
Field	Diamond Mound	Lease #	
County	Eddy	Location	Sec 2, T16S, R27E
State	NM		2650' FNL & 660' FEL
Spud Date	10/22/1977		
GL	3578'		

Description	O.D.	Grade	Weight	Depth	Hole	Cmt Sx	TOC
Surface Csg	13 3/8	H40	72#	345	17 1/2	350	0
Inter Csg	8 5/8	K55	24#	1,632	11	675	130' TS
Prod Csg	4 1/2	K55	10.5&11.6#	8,780	7 7/8	1,980	0

Formation Top	
Queen	805
San Andres	1505
Glorieta	2895
Tubb	4262
Abo	5004
Wolfcamp	6210
Strawn	8004
Atoka	8420



4. Perf'd csg @ 395'. Sqz'd 245 sx class C cmt @ 395' & circulated to surface

13 3/8 H40 72# CSG @ 345

3. Perf'd csg @ 855'. Pressured up on perfs to 500 PSI. Spotted 25 sx class C cmt @ 905-527'. WOC. Tagged plug @ 582'.

8 5/8 K55 24# CSG @ 1,632

2. Perf'd @ 1682'. Pressured up on perfs to 500 PSI. Spotted 25 sx class C cmt @ 1732-1354'. WOC & Tagged plug @ 1344'

1. Tagged existing plug @ 2758'

CIBP @ 2796' W/ 35' CMT

Perfs @ 2896-2911'

CIBP @ 6320' W/ 35' CMT

Perfs @ 6360-6364'

CIBP @ 6475' W/ 35' CMT

Perfs @ 6512-6516'

CIBP @ 7900' W/ 35' CMT

Perfs @ 7926-8003'

CIBP @ 8400' W/ 35' CMT

Perfs @ 8438-8602'

4 1/2 K55 10.5 CSG @ 8,780

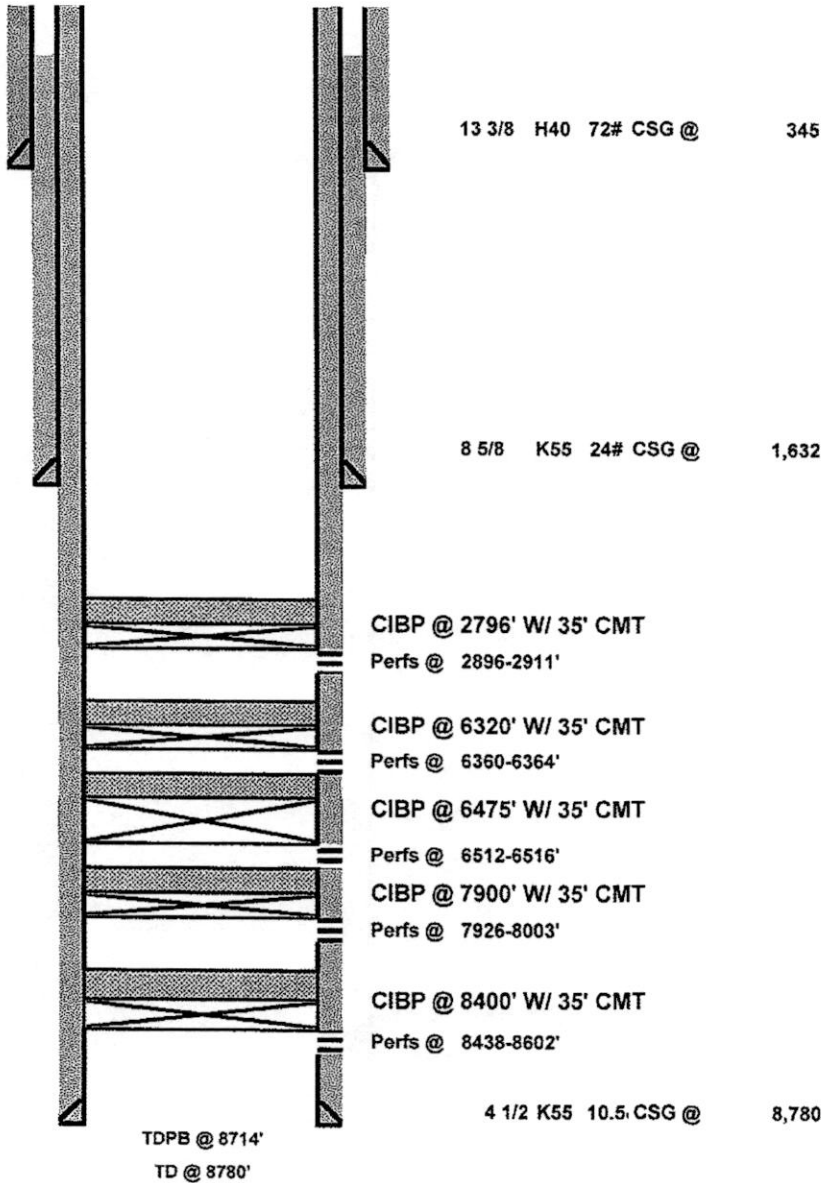
TDPB @ 8714'

TD @ 8780'

Mack Energy		Current	
Author:	BCM & Associates, INC	Well No.	#1
Well Name	Bogle State Com	API #:	30-015-22307
Field	Diamond Mound	Lease #	
County	Eddy	Location	Sec 2, T16S, R27E
State	NM		2650' FNL & 660' FEL
Spud Date	10/22/1977		
GL	3578'		

Description	O.D.	Grade	Weight	Depth	Hole	Cmt Sx	TOC
Surface Csg	13 3/8	H40	72#	345	17 1/2	350	0
Inter Csg	8 5/8	K55	24#	1,632	11	675	130' TS
Prod Csg	4 1/2	K55	10.5&11.6#	8,780	7 7/8	1,980	0

Formation Top	
Queen	805
San Andres	1505
Glorieta	2895
Tubb	4262
Abo	5004
Wolfcamp	6210
Strawn	8004
Aloka	8420



District I
 1625 N. French Dr., Hobbs, NM 88240
 Phone:(575) 393-6161 Fax:(575) 393-0720

District II
 811 S. First St., Artesia, NM 88210
 Phone:(575) 748-1283 Fax:(575) 748-9720

District III
 1000 Rio Brazos Rd., Aztec, NM 87410
 Phone:(505) 334-6178 Fax:(505) 334-6170

District IV
 1220 S. St Francis Dr., Santa Fe, NM 87505
 Phone:(505) 476-3470 Fax:(505) 476-3462

State of New Mexico
Energy, Minerals and Natural Resources
Oil Conservation Division
1220 S. St Francis Dr.
Santa Fe, NM 87505

CONDITIONS
 Action 29883

CONDITIONS

Operator: MACK ENERGY CORP P.O. Box 960 Artesia, NM 882110960	OGRID: 13837
	Action Number: 29883
	Action Type: [C-103] Sub. Plugging (C-103P)

CONDITIONS

Created By	Condition	Condition Date
gcordero	None	6/16/2021