

State of New Mexico
Energy, Minerals and Natural Resources

Office
District I - (575) 393-6161
1625 N. French Dr., Hobbs, NM 88240
District II - (575) 748-1283
811 S. First St., Artesia, NM 88210
District III - (505) 334-6178
1000 Rio Brazos Rd., Aztec, NM 87410
District IV - (505) 476-3460
1220 S. St. Francis Dr., Santa Fe, NM
87505

OIL CONSERVATION DIVISION
1220 South St. Francis Dr.
Santa Fe, NM 87505

WELL API NO. 30-015-46770
5. Indicate Type of Lease STATE <input type="checkbox"/> FEE <input checked="" type="checkbox"/>
6. State Oil & Gas Lease No. N/A
7. Lease Name or Unit Agreement Name Astrodog Fee 0809
8. Well Number 236H
9. OGRID Number 37290
10. Pool name or Wildcat Purple Sage; Wolfcamp Gas

SUNDRY NOTICES AND REPORTS ON WELLS
(DO NOT USE THIS FORM FOR PROPOSALS TO DRILL OR TO DEEPEN OR PLUG BACK TO A DIFFERENT RESERVOIR. USE "APPLICATION FOR PERMIT" (FORM C-101) FOR SUCH PROPOSALS.)

1. Type of Well: Oil Well ☐ Gas Well ☒ Other

2. Name of Operator

Novo Oil & Gas Northern Delaware, LLC

3. Address of Operator

1001 West Wilshire Blvd, Suite 206, Oklahoma City OK 73116

4. Well Location

Unit Letter: E

1970 feet from the NORTH line and 200 feet from the WEST line

Section 8

Township 23 S

Range 29 E

NMPM

Eddy County

11. Elevation (Show whether DR, RKB, RT, GR, etc.)
3011' GR

12. Check Appropriate Box to Indicate Nature of Notice, Report or Other Data

NOTICE OF INTENTION TO:

PERFORM REMEDIAL WORK ☐ PLUG AND ABANDON ☐
TEMPORARILY ABANDON ☐ CHANGE PLANS ☒
PULL OR ALTER CASING ☐ MULTIPLE COMPL ☐
DOWNHOLE COMMINGLE ☐
CLOSED-LOOP SYSTEM ☐
OTHER: ☐

SUBSEQUENT REPORT OF:

REMEDIAL WORK ☐ ALTERING CASING ☐
COMMENCE DRILLING OPNS. ☐ P AND A ☐
CASING/CEMENT JOB ☐
OTHER: ☐

13. Describe proposed or completed operations. (Clearly state all pertinent details, and give pertinent dates, including estimated date of starting any proposed work). SEE RULE 19.15.7.14 NMAC. For Multiple Completions: Attach wellbore diagram of proposed completion or recompletion.

Change SHL from 1970' FNL and 200' FWL, Section 8, 23S 29E to 2410' FSL and 1090 FEL, Section 7, 23S 29E.

Change BHL from 2310' FSL and 130' FEL, Section 9, 23S 29E to 2090' FSL and 130' FEL, Section 9, 23S 29E.

See attached revised plat for new location.

Spud Date:

Rig Release Date:

I hereby certify that the information above is true and complete to the best of my knowledge and belief.

SIGNATURE

TITLE CONSULTANT

DATE 7-7-21

Type or print name BRIAN WOOD

E-mail address: brian@permitswest.com

PHONE: 505 466-8120

For State Use Only

APPROVED BY: John Garcia

TITLE Petroleum Engineer

DATE 7/14/2021

Conditions of Approval (if any):

District I
1625 N. French Dr., Hobbs, NM 88240
Phone: (575) 393-6161 Fax: (575) 393-0720
District II
811 S. First St., Artesia, NM 88210
Phone: (575) 748-1283 Fax: (575) 748-9720
District III
1000 Rio Brazos Road, Aztec, NM 87410
Phone: (505) 334-6178 Fax: (505) 334-6170
District IV
1220 S. St. Francis Dr., Santa Fe, NM 87505
Phone: (505) 476-3460 Fax: (505) 476-3462

State of New Mexico
Energy, Minerals & Natural Resources Department
OIL CONSERVATION DIVISION
1220 South St. Francis Dr.
Santa Fe, NM 87505

Form C-102
Revised August 1, 2011
Submit one copy to appropriate
District Office

☐ AMENDED REPORT

WELL LOCATION AND ACREAGE DEDICATION PLAT

¹ API Number 30-015-46770	² Pool Code 98220	³ Pool Name Purple Sage; Wolfcamp Gas Pool
⁴ Property Code	⁵ Property Name ASTRODOG FEE 0809	⁶ Well Number 236H
⁷ OGRID No. 372920	⁸ Operator Name NOVO OIL & GAS NORTHERN DELAWARE, LLC	⁹ Elevation 3011.2

¹⁰ Surface Location

UL or lot no.	Section	Township	Range	Lot Idn	Feet from the	North/South line	Feet from the	East/West line	County
I	7	23 S	29 E		2410	SOUTH	1090	EAST	EDDY

¹¹ Bottom Hole Location If Different From Surface

UL or lot no.	Section	Township	Range	Lot Idn	Feet from the	North/South line	Feet from the	East/West line	County
I	9	23 S	29 E		2090	SOUTH	130	EAST	EDDY

¹² Dedicated Acres	¹³ Joint or Infill	¹⁴ Consolidation Code	¹⁵ Order No.
-------------------------------	-------------------------------	----------------------------------	-------------------------

No allowable will be assigned to this completion until all interests have been consolidated or a non-standard unit has been approved by the division.

<p>NW CORNER SEC. 7 LAT. = 32.3275007°N LONG. = 104.0319716°W NMSP EAST (FT) N = 483007.81 E = 634422.64</p> <p>N/4 CORNER SEC. 7 LAT. = 32.3272315°N LONG. = 104.0239843°W NMSP EAST (FT) N = 482916.93 E = 636890.08</p> <p>NW CORNER SEC. 8 LAT. = 32.3269490°N LONG. = 104.0158765°W NMSP EAST (FT) N = 482821.88 E = 639456.52</p> <p>SECTION CORNER LAT. = 32.3270813°N LONG. = 103.9882277°W NMSP EAST (FT) N = 482885.93 E = 644753.39</p> <p>NE CORNER SEC. 9 LAT. = 32.3271480°N LONG. = 103.9812888°W NMSP EAST (FT) N = 482926.51 E = 650078.15</p> <p>N/4 CORNER SEC. 8 LAT. = 32.3270383°N LONG. = 104.0071330°W NMSP EAST (FT) N = 482862.06 E = 642095.38</p> <p>N/4 CORNER SEC. 9 LAT. = 32.3182049°N LONG. = 103.9816114°W NMSP EAST (FT) N = 479673.52 E = 649989.16</p> <p>W/4 CORNER SEC. 7 LAT. = 32.3201780°N LONG. = 104.0320194°W NMSP EAST (FT) N = 480343.13 E = 634415.38</p> <p>W/4 CORNER SEC. 8 LAT. = 32.3196389°N LONG. = 104.0155775°W NMSP EAST (FT) N = 480182.41 E = 639494.98</p> <p>W/4 CORNER SEC. 9 LAT. = 32.3182049°N LONG. = 103.9822587°W NMSP EAST (FT) N = 479673.52 E = 649989.16</p> <p>ASTRODOG FEE 0809 236H ELEV. = 3011.2 LAT. = 32.3191072°N (NADB3) LONG. = 104.0190847°W NMSP EAST (FT) N = 479965.78 E = 638412.14</p> <p>SW CORNER SEC. 7 LAT. = 32.3128341°N LONG. = 104.0320645°W NMSP EAST (FT) N = 477672.21 E = 634408.96</p> <p>SW CORNER SEC. 8 LAT. = 32.3123728°N LONG. = 104.0152649°W NMSP EAST (FT) N = 477519.37 E = 639599.40</p> <p>SECTION CORNER LAT. = 32.3124602°N LONG. = 103.9882208°W NMSP EAST (FT) N = 477567.22 E = 644864.81</p> <p>SE CORNER SEC. 9 LAT. = 32.3124611°N LONG. = 103.9811277°W NMSP EAST (FT) N = 477584.48 E = 650145.47</p>	<p>¹⁷ OPERATOR CERTIFICATION</p> <p>I hereby certify that the information contained herein is true and complete to the best of my knowledge and belief, and that this organization either owns a working interest or unleased mineral interest in the land including the proposed bottom hole location or has a right to drill this well at this location pursuant to a contract with an owner of such a mineral or working interest, or to a voluntary pooling agreement or a compulsory pooling order heretofore entered by the division.</p> <p><i>Justin Carter</i> 7/6/2021 Signature Date</p> <p>Justin Carter Printed Name</p> <p>jcarter@novoog.com E-mail Address</p> <p>¹⁸ SURVEYOR CERTIFICATION</p> <p>I hereby certify that the well location shown on this plat was plotted from field notes of actual surveys made by me or under my supervision, and that the same is true and correct to the best of my belief.</p> <p>JULY 1, 2021 Date of Survey</p> <p><i>PHILIP F. JARAMILLO</i> Signature and Seal of Professional Surveyor</p> <p>Certificate Number: PHILIP F. JARAMILLO PLS 12797 SURVEY NO. 7877A</p>
---	--

Intent ☐ As Drilled ☐

API #		
Operator Name: NOVO OIL & GAS NORTHERN DELAWARE, LLC	Property Name: ASTRODOG FEE 0809	Well Number 236H

Kick Off Point (KOP)

UL	Section	Township	Range	Lot	Feet	From N/S	Feet	From E/W	County
Latitude					Longitude				NAD

First Take Point (FTP)

UL	Section	Township	Range	Lot	Feet	From N/S	Feet	From E/W	County
L	8	23S	29E		2090	SOUTH	330	WEST	EDDY
Latitude 32.3181209					Longitude 104.0144435				NAD 83

Last Take Point (LTP)

UL	Section	Township	Range	Lot	Feet	From N/S	Feet	From E/W	County
I	9	23S	29E		2090	SOUTH	330	EAST	EDDY
Latitude 32.3182049					Longitude 103.9822587				NAD 83

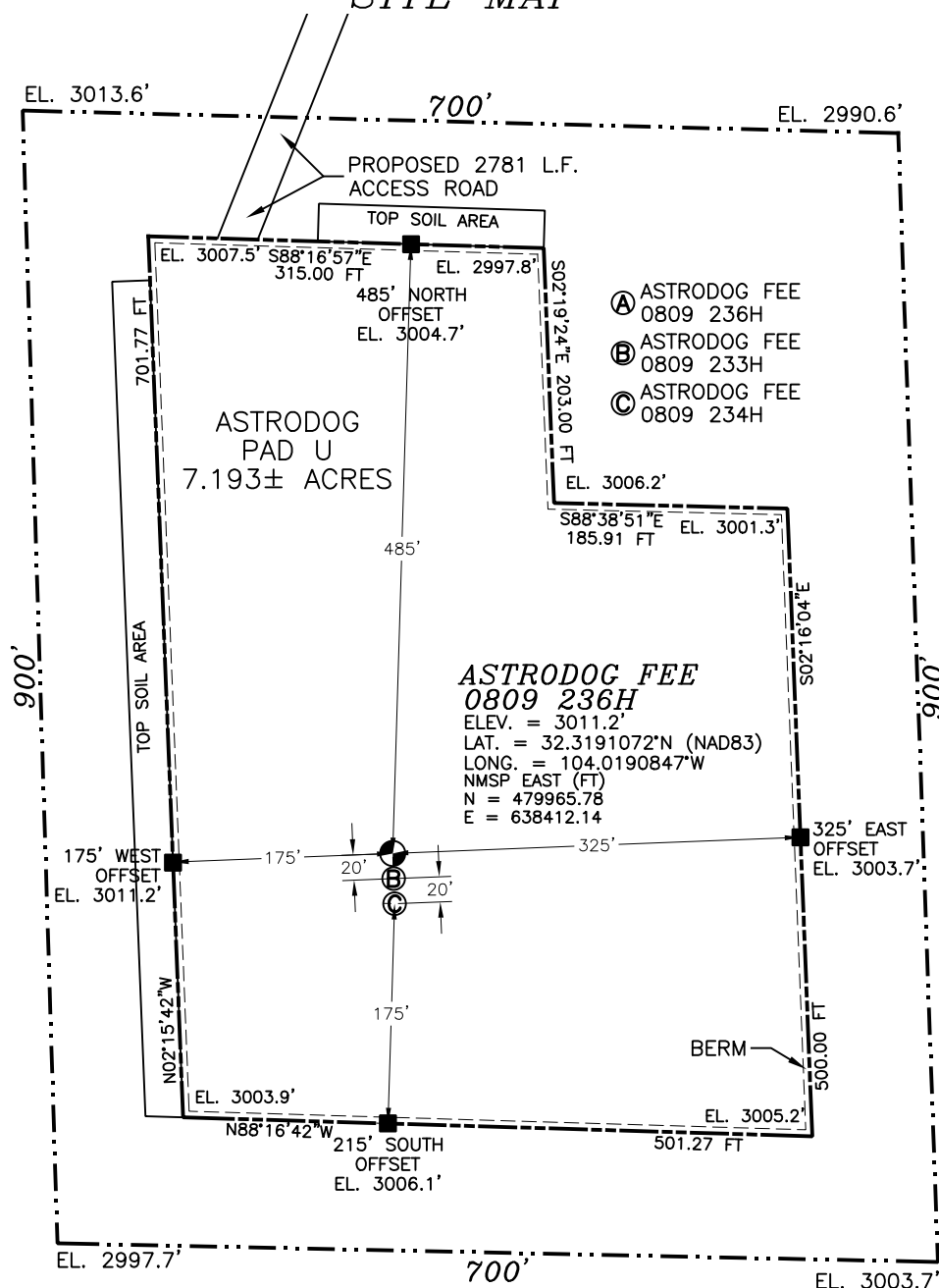
Is this well the defining well for the Horizontal Spacing Unit? ☐Is this well an infill well? ☐

If infill is yes please provide API if available, Operator Name and well number for Defining well for Horizontal Spacing Unit.

API #		
Operator Name:	Property Name:	Well Number

KZ 06/29/2018

SECTION 7, TOWNSHIP 23 SOUTH, RANGE 29 EAST, N.M.P.M.
EDDY COUNTY, STATE OF NEW MEXICO
SITE MAP



015 75 150 300

SCALE 1" = 150'

DIRECTIONS TO LOCATION

FROM STATE HWY 31 AND REFINERY ROAD, GO NORTH-NORTHEAST ON HWY 31 1.1 MILES, TURN RIGHT ON CALICHE ROAD (POTASH MINE ROAD) AND GO SOUTH-SOUTHEAST 0.44 MILES TO A ROAD SURVEY, FOLLOW FLAGS 1558' SOUTHWEST & WEST THEN SOUTHWEST 1223' TO NORTHWEST PAD CORNER FOR THIS LOCATION.

I, FILIMON F. JARAMILA, A NEW MEXICO REGISTERED PROFESSIONAL SURVEYOR CERTIFY THAT I DEPOSITED MY RECORD FOR THIS SURVEY IN THE PUBLIC RECORDS OF THE STATE OF NEW MEXICO TO THE BEST OF MY KNOWLEDGE AND BELIEF AND I RESERVE AND PLAT MEET THE MINIMUM STANDARDS FOR SURVEYING IN NEW MEXICO.

FILIMON F. JARAMILA 2797

MADRON SURVEYING, INC.

301 SOUTH CANAL
(575) 234-3341

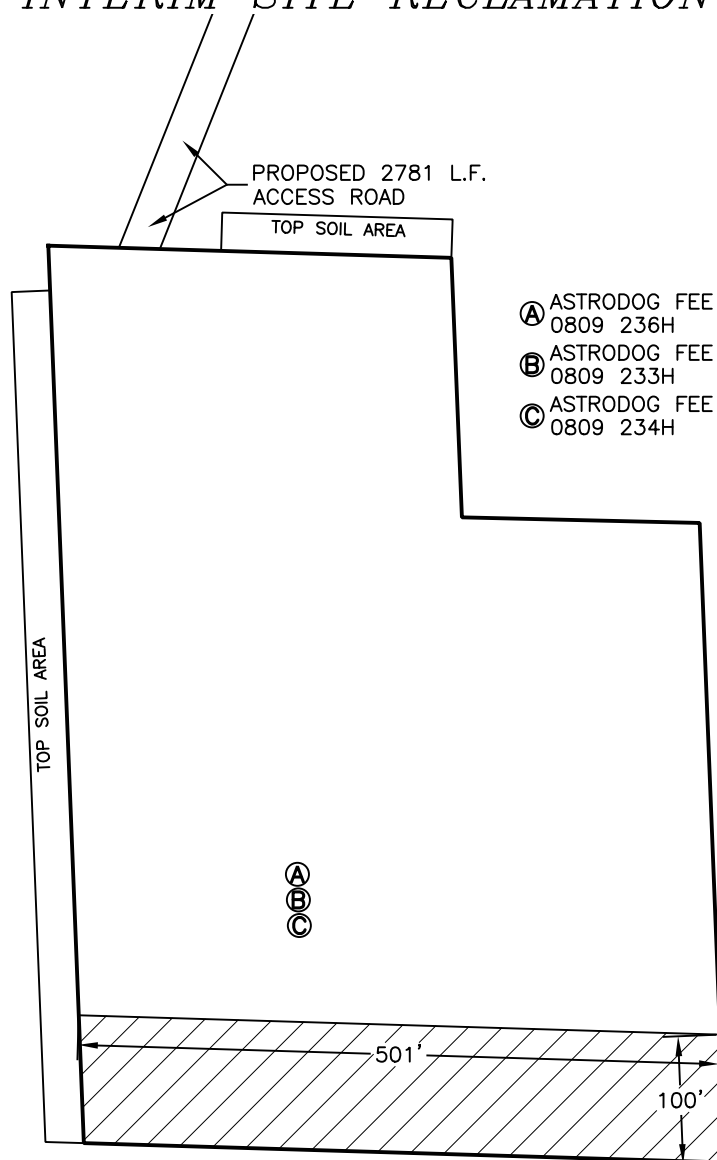
CARLSBAD, NEW MEXICO

NOVO OIL & GAS NORTHERN DELAWARE, LLC
ASTRODOG FEE 0809 236H
LOCATED 2410 FT. FROM THE SOUTH LINE
AND 1090 FT. FROM THE EAST LINE OF
SECTION 7, TOWNSHIP 23 SOUTH,
RANGE 29 EAST, N.M.P.M.
EDDY COUNTY, STATE OF NEW MEXICO

JULY 1, 2021

SURVEY NO. 7877A

SECTION 7, TOWNSHIP 23 SOUTH, RANGE 29 EAST, N.M.P.M.
 EDDY COUNTY, STATE OF NEW MEXICO
 INTERIM SITE RECLAMATION



015 75 150 300
 SCALE 1" = 150'

NOVO OIL & GAS NORTHERN DELAWARE, LLC
ASTRODOG FEE 0809 236H
 LOCATED 2410 FT. FROM THE SOUTH LINE
 AND 1090 FT. FROM THE EAST LINE OF
 SECTION 7, TOWNSHIP 23 SOUTH,
 RANGE 29 EAST, N.M.P.M.
 EDDY COUNTY, STATE OF NEW MEXICO

JULY 1, 2021

SURVEY NO. 7877A

MADRON SURVEYING, INC. 301 SOUTH CANAL CARLSBAD, NEW MEXICO
 (575) 234-3341

District I
1625 N. French Dr., Hobbs, NM 88240
Phone:(575) 393-6161 Fax:(575) 393-0720
District II
811 S. First St., Artesia, NM 88210
Phone:(575) 748-1283 Fax:(575) 748-9720
District III
1000 Rio Brazos Rd., Aztec, NM 87410
Phone:(505) 334-6178 Fax:(505) 334-6170
District IV
1220 S. St Francis Dr., Santa Fe, NM 87505
Phone:(505) 476-3470 Fax:(505) 476-3462

State of New Mexico
Energy, Minerals and Natural Resources
Oil Conservation Division
1220 S. St Francis Dr.
Santa Fe, NM 87505

COMMENTS

Action 35173

COMMENTS

Operator: NOVO OIL & GAS NORTHERN DELAWARE, LLC 1001 West Wilshire Blvd Oklahoma City, OK 73116	OGRID: 372920
	Action Number: 35173
	Action Type: [C-103] NOI Change of Plans (C-103A)

COMMENTS

Created By	Comment	Comment Date
kpickford	KP GEO Review 7/7/2021	7/7/2021

District I
1625 N. French Dr., Hobbs, NM 88240
Phone:(575) 393-6161 Fax:(575) 393-0720
District II
811 S. First St., Artesia, NM 88210
Phone:(575) 748-1283 Fax:(575) 748-9720
District III
1000 Rio Brazos Rd., Aztec, NM 87410
Phone:(505) 334-6178 Fax:(505) 334-6170
District IV
1220 S. St Francis Dr., Santa Fe, NM 87505
Phone:(505) 476-3470 Fax:(505) 476-3462

State of New Mexico
Energy, Minerals and Natural Resources
Oil Conservation Division
1220 S. St Francis Dr.
Santa Fe, NM 87505

CONDITIONS

Action 35173

CONDITIONS

Operator: NOVO OIL & GAS NORTHERN DELAWARE, LLC 1001 West Wilshire Blvd Oklahoma City, OK 73116	OGRID: 372920
	Action Number: 35173
	Action Type: [C-103] NOI Change of Plans (C-103A)

CONDITIONS

Created By	Condition	Condition Date
kpickford	Adhere to previous NMOCD Conditions of Approval	7/7/2021