

District I
1625 N. French Dr., Hobbs, NM 88240
Phone: (575) 393-6161 Fax: (575) 393-0720
District II
811 S. First St., Artesia, NM 88210
Phone: (575) 748-1283 Fax: (575) 748-0720
District III
1000 Rio Brazos Road, Aztec, NM 87410
Phone: (505) 334-6178 Fax: (505) 334-6170
District IV
1220 S. St. Francis Dr., Santa Fe, NM 87505
Phone: (505) 476-3460 Fax: (505) 476-3462

State of New Mexico
Energy, Minerals & Natural Resources Department
OIL CONSERVATION DIVISION
1220 South St. Francis Dr.
Santa Fe, NM 87505

Form C-102

Revised August 1, 2011
Submit one copy to appropriate
District Office

☐ AMENDED REPORT

WELL LOCATION AND ACREAGE DEDICATION PLAT

| | | |
|--|---|--|
| ¹ API Number 30-025-24285 | ² Pool Code 13490 | ³ Pool Name CROSSROADS; SILURO DEVONIAN |
| ⁴ Property Code 326322 | ⁵ Property Name CROSSROAD SILURO DEVONIAN UNIT | |
| ⁷ OGRID No. 21355 | ⁸ Operator Name SOUTHWEST ROYALTIES, INC. | |
| | | ⁶ Well Number #310 |
| | | ⁹ Elevation 4034' |

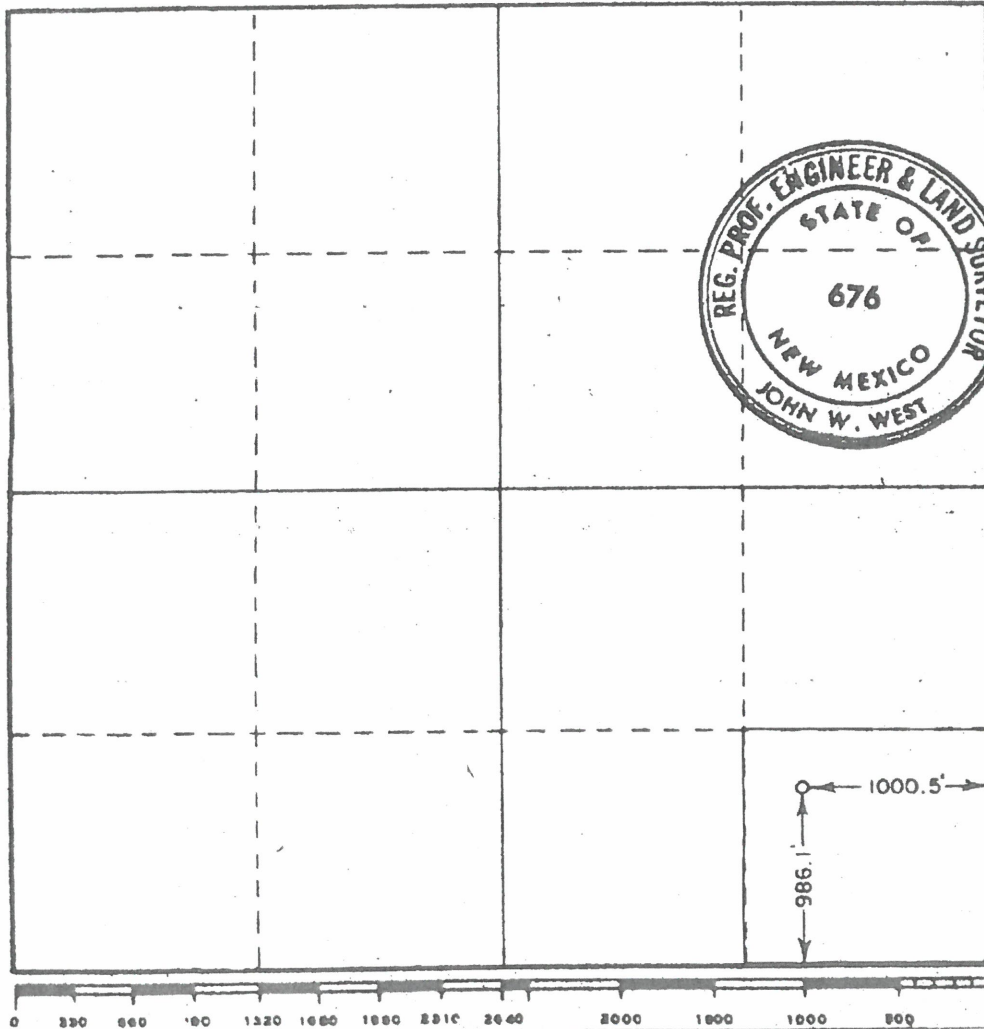
¹⁰ Surface Location

| | | | | | | | | | |
|---------------------------|----------------------|-----------------------|---------------------|---------|-----------------------------|----------------------------------|------------------------------|-------------------------------|----------------------|
| UL or lot no. P | Section 27 | Township 9S | Range 36E | Lot Idn | Feet from the 986 | North/South line SOUTH | Feet from the 1001 | East/West line EAST | County LEA |
|---------------------------|----------------------|-----------------------|---------------------|---------|-----------------------------|----------------------------------|------------------------------|-------------------------------|----------------------|

¹¹ Bottom Hole Location If Different From Surface

| | | | | | | | | | |
|--|-------------------------------|----------------------------------|-------------------------|---------|-----------------------------|----------------------------------|------------------------------|-------------------------------|----------------------|
| UL or lot no. P | Section 27 | Township 9S | Range 36E | Lot Idn | Feet from the 986 | North/South line SOUTH | Feet from the 1001 | East/West line EAST | County LEA |
| ¹² Dedicated Acres 40 | ¹³ Joint or Infill | ¹⁴ Consolidation Code | ¹⁵ Order No. | | | | | | |

No allowable will be assigned to this completion until all interests have been consolidated or a non-standard unit has been approved by the division.

¹⁷ OPERATOR CERTIFICATION

I hereby certify that the information contained herein is true and complete to the best of my knowledge and belief, and that this organization either owns a working interest or unleased mineral interest in the land including the proposed bottom hole location or has a right to drill this well at this location pursuant to a contract with an owner of such a mineral or working interest, or to a voluntary pooling agreement or a compulsory pooling order heretofore entered by the division.

Signature

Date

Lindsay Livesay

Printed Name

llivesay@swrpermian.com

E-mail Address

¹⁸ SURVEYOR CERTIFICATION

I hereby certify that the well location shown on this plat was plotted from field notes of actual surveys made by me or under my supervision, and that the same is true and correct to the best of my belief.

October 28, 1972

Date of Survey

Signature and Seal of Professional Surveyor:

PREVIOUS C102
ALREADY ON FILE

Certificate Number

District I

1625 N. French Dr., Hobbs, NM 88240
Phone:(575) 393-6161 Fax:(575) 393-0720

District II

811 S. First St., Artesia, NM 88210
Phone:(575) 748-1283 Fax:(575) 748-9720

District III

1000 Rio Brazos Rd., Aztec, NM 87410
Phone:(505) 334-6178 Fax:(505) 334-6170

District IV

1220 S. St Francis Dr., Santa Fe, NM 87505
Phone:(505) 476-3470 Fax:(505) 476-3462

State of New Mexico
Energy, Minerals and Natural Resources
Oil Conservation Division
1220 S. St Francis Dr.
Santa Fe, NM 87505

CONDITIONS

Action 36407

CONDITIONS

| | |
|--|--|
| Operator: SOUTHWEST ROYALTIES INC P O BOX 53570 Midland, TX 79710 | OGRID: 21355 |
| | Action Number: 36407 |
| | Action Type: [C-102] Well Location & Acreage Plat (C-102) |

CONDITIONS

| | | |
|------------|-----------|----------------|
| Created By | Condition | Condition Date |
| pkautz | None | 8/16/2021 |