

FORM APPROVED
DATE: 08-01-05
EXPIRES: January 31, 2006

SPECIAL FILE COPY

SUMMARY NOTICES AND REPORTS ON WELLS
Do not use this form for proposals to drill or to re-enter an abandoned well. Use Form 3160-3 (APD) for such proposals.

SUBMIT IN TRIPLICATE- Other instructions on reverse side.

1. Type of Well <input checked="" type="checkbox"/> Oil Well <input type="checkbox"/> Gas Well <input type="checkbox"/> Other		3. Lease Serial No. NMMNM-47183
2. Name of Operator BLM for Laguna Grande, LLC		6. If Indian, Alton or Tribe Name
3a. Address 628 E. Greene St, Carlsbad, NM 88224	3b. Phone No. (include area code) 575-234-5972	7. If Unit or CA/Agreement, Name and/or No
4. Location of Well (Footage, Sec. T. R. M. or Survey Description) 1380' FSL & 990' FEL SEC 28 T23S R29E		8. Well Name and No Laguna Grande Federal #1
		9. API Well No. 30-015-21636
		10. Field and Pool, or Exploratory Area Laguna Salado Bone Springs, South
		11. County or Parish, State Eddy County, New Mexico

12. CHECK APPROPRIATE BOX(ES) TO INDICATE NATURE OF NOTICE, REPORT, OR OTHER DATA

TYPE OF SUBMISSION	TYPE OF ACTION			
<input checked="" type="checkbox"/> Notice of Intent	<input type="checkbox"/> Acidize	<input type="checkbox"/> Deepen	<input type="checkbox"/> Production (Start Resume)	<input type="checkbox"/> Water Shut-Off
<input type="checkbox"/> Subsequent Report	<input type="checkbox"/> Alter Casing	<input type="checkbox"/> Fracture Treat	<input type="checkbox"/> Reclamation	<input type="checkbox"/> Well Integrity
<input type="checkbox"/> Final Abandonment Notice	<input type="checkbox"/> Casing Repair	<input type="checkbox"/> New Construction	<input type="checkbox"/> Recomplete	<input type="checkbox"/> Other
	<input type="checkbox"/> Change Plans	<input checked="" type="checkbox"/> Plug and Abandon	<input type="checkbox"/> Temporarily Abandon	
	<input type="checkbox"/> Convert to Injection	<input type="checkbox"/> Plug Back	<input type="checkbox"/> Water Disposal	

13. Describe Proposed or Completed Operation (clearly state all pertinent details, including estimated starting date of any proposed work and approximate duration thereof. If the proposal is to deepen directionally or recomple horizontally, give subsurface locations and measured and true vertical depths of all pertinent markers and zones. Attach the Bond under which the work will be performed or provide the Bond No. on file with BLM/BIA. Required subsequent reports shall be filed within 30 days following completion of the involved operations. If the operation results in a multiple completion or recompletion in a new interval, a Form 3160-4 shall be filed once testing has been completed. Final Abandonment Notices shall be filed only after all requirements, including reclamation, have been completed, and the operator has determined that the site is ready for final inspection.)

See Attached

Accepted for Record Only

K 7

SUBJECT TO LIKE
APPROVAL BY BLM

NMOCD 8/27/21 SEE ATTACHED FOR
CONDITIONS OF APPROVAL

14. I hereby certify that the foregoing is true and correct

Name (Printed/Typed) Bobby Stearns	Title Agent
Signature	Date 8-3-20

THIS SPACE FOR FEDERAL OR STATE OFFICE USE

Approved by <i>James A. Amos</i>	Title SPET	Date 8-3-20
Conditions of approval, if any, are attached. Approval of this notice does not warrant or certify that the applicant holds legal or equitable title to those rights in the subject lease which would enable the applicant to conduct operations thereon.	Office LFO	

Title 18 U.S.C. Section 1001 and Title 43 U.S.C. Section 1212, make it a crime for any person knowingly and willfully to make to any department or agency of the United States any false, fictitious or fraudulent statements or representations as to any matter within its jurisdiction

(Instructions on page 2)

Image

Laguna Grande Fed #1**API 30-015-21636****Wellbore History**

13 3/8" 54.5# casing @ 343' cemented with 325 sx. Circulated

10 3/4" 45.5# & 51# casing @ 2900' with 1800 sx cement. Circulated

7 5/8" 29.7# casing @ 10848' with DV tool @ 6784'. 1st stage 700 sx cement, 2nd stage 750 sx. No cement reported to surface.

5" 18# liner from 10343' to 13645' with 375 sx cement

13529' to 13586'. Squeezed with 60 sx cement. 3/29/1976

13107' to 13258'. CIBP @ 13000' with 35' cement on top. 5/24/1979

12888' to 12968'. CIBP @ 12850' with 35' cement on top. 8/28/1980

11888' to 11900'. Squeezed under retainer with 185 sx cement. 5/28/1980. The retainer was later drilled out. After testing and abandoning the perms from 12888' to 12968' CIBP's with 35' cement on top were set at 11800' and 10100'. 8/23/1982

6701' to 6936'. CIBP @ 6691' with 6 sx cement on top. 9/2/1994

6590' to 6604'. CIBP @ 6580' with 6 sx cement on top. 9/14/1994

6522' to 6564'. CIBP @ 6400'. No report of cement on top. 9/23/1994

5080' to 5090'. No report on condition of these perms. 9/25/1994

Well was drilled back down to the Strawn. Records are unclear.

11890' to 11900'. CIBP @ 11850' with 35' cement on top. From a NOI dated 8/15/2005

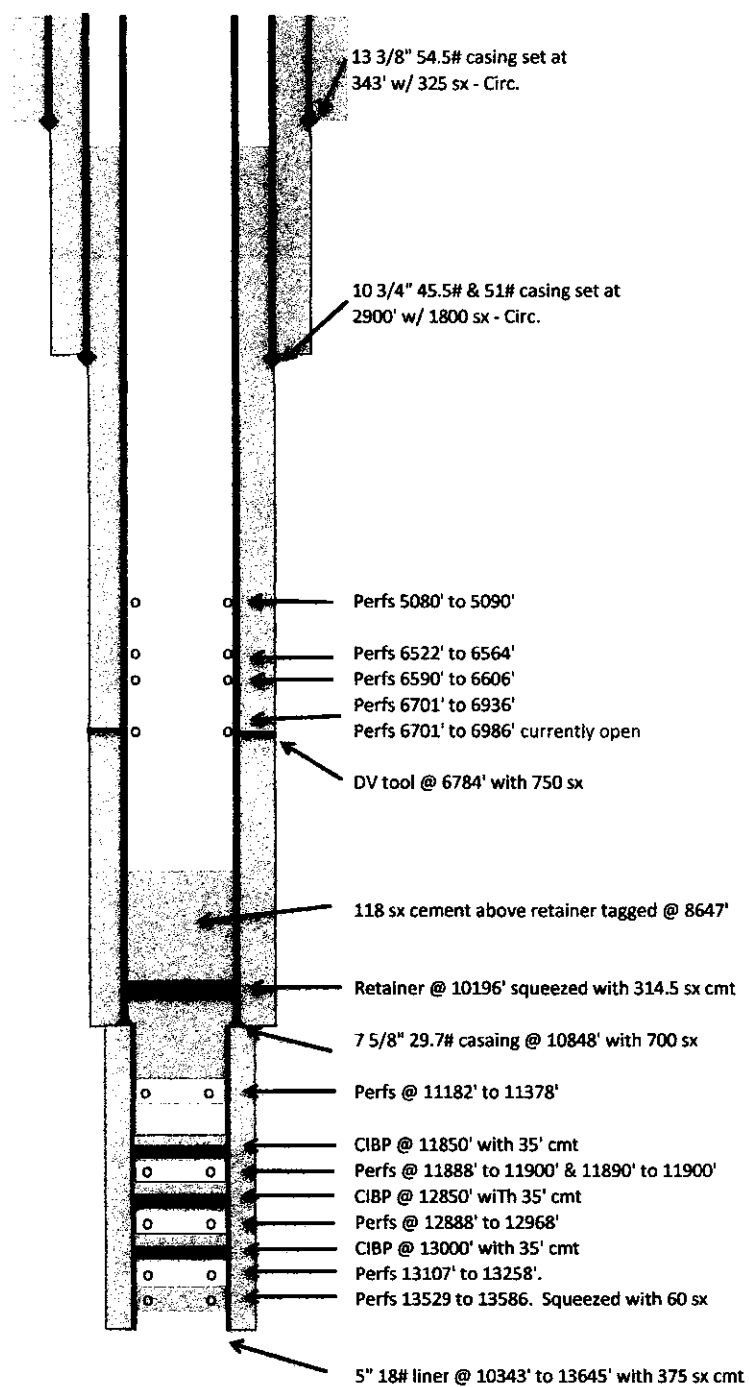
11182 to 11378'. Retainer @ 10196' squeezed with 314.5 sx cement. Stung out of retainer and left 118 sx cement on top of retainer. Tagged cement @ 8647'. 8/9/2008

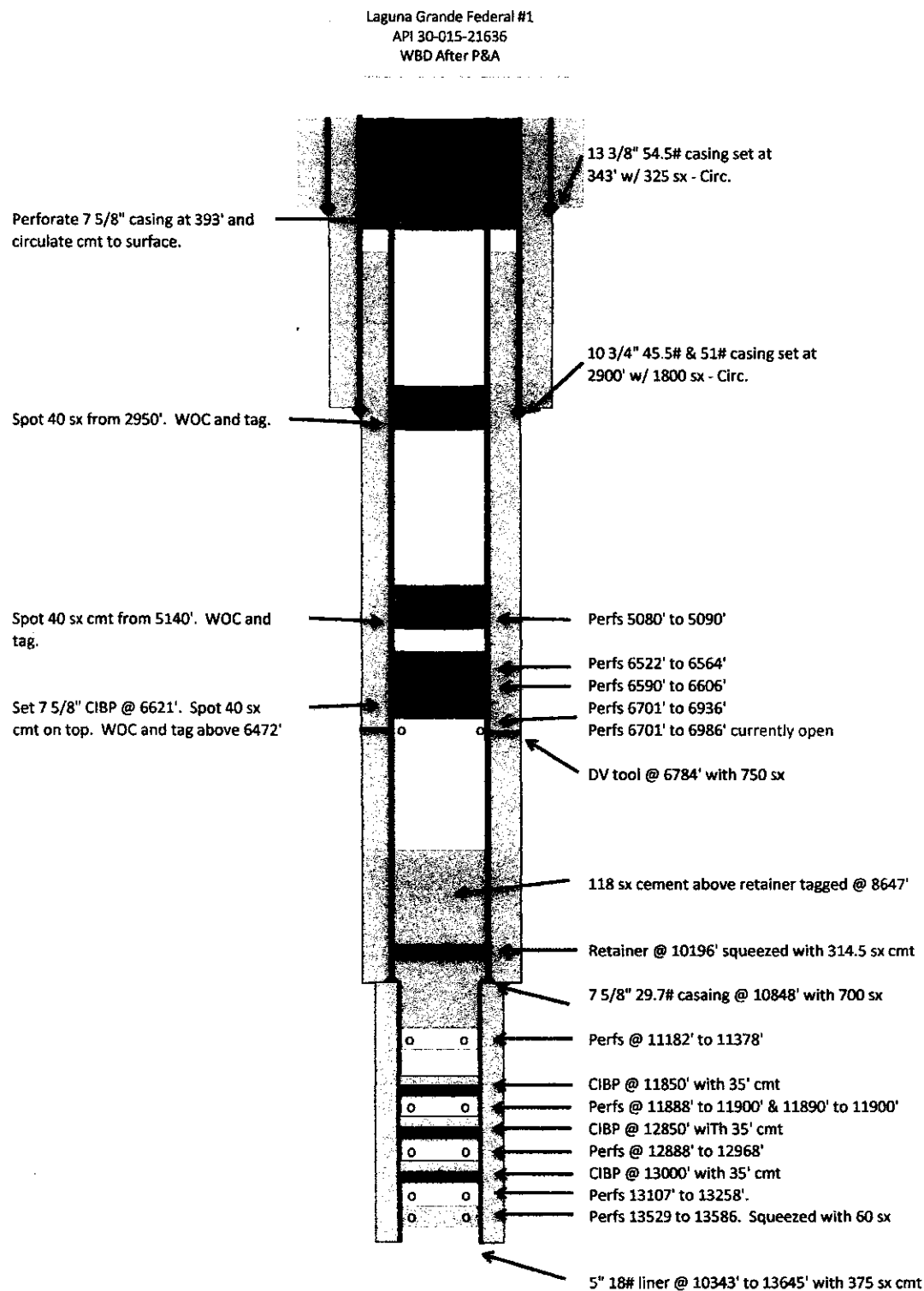
6701' to 6986'. Currently open

Proposed Plugging Procedures

1. Lay down rods and install BOP. POOH with tubing and tally.
2. Make gauge ring run and set 7 5/8" CIBP at 6621'. Circulate MLF and test casing to 500#.
3. Spot 40 sx Class C cement on top of CIBP. WOC and tag at 6472' or higher.
4. Spot 40 sx cement from 5140'. WOC and tag
5. Spot 40 sx cement across 10 3/4" shoe from 2950'. WOC and tag.
6. Perforate 7 5/8" casing at 393'. Gain circulation and pump cement down the 7 5/8" casing to the perms at 393' and up the annulus to surface with 160 sx cement.
7. Remove wellhead. Insure there is good cement to surface in all casing strings and install marker.

Laguna Grande Federal #1
API 30-015-21636
WBD Before P&A





Laguna Grande Fed #1**API 30-015-21636****Wellbore History**

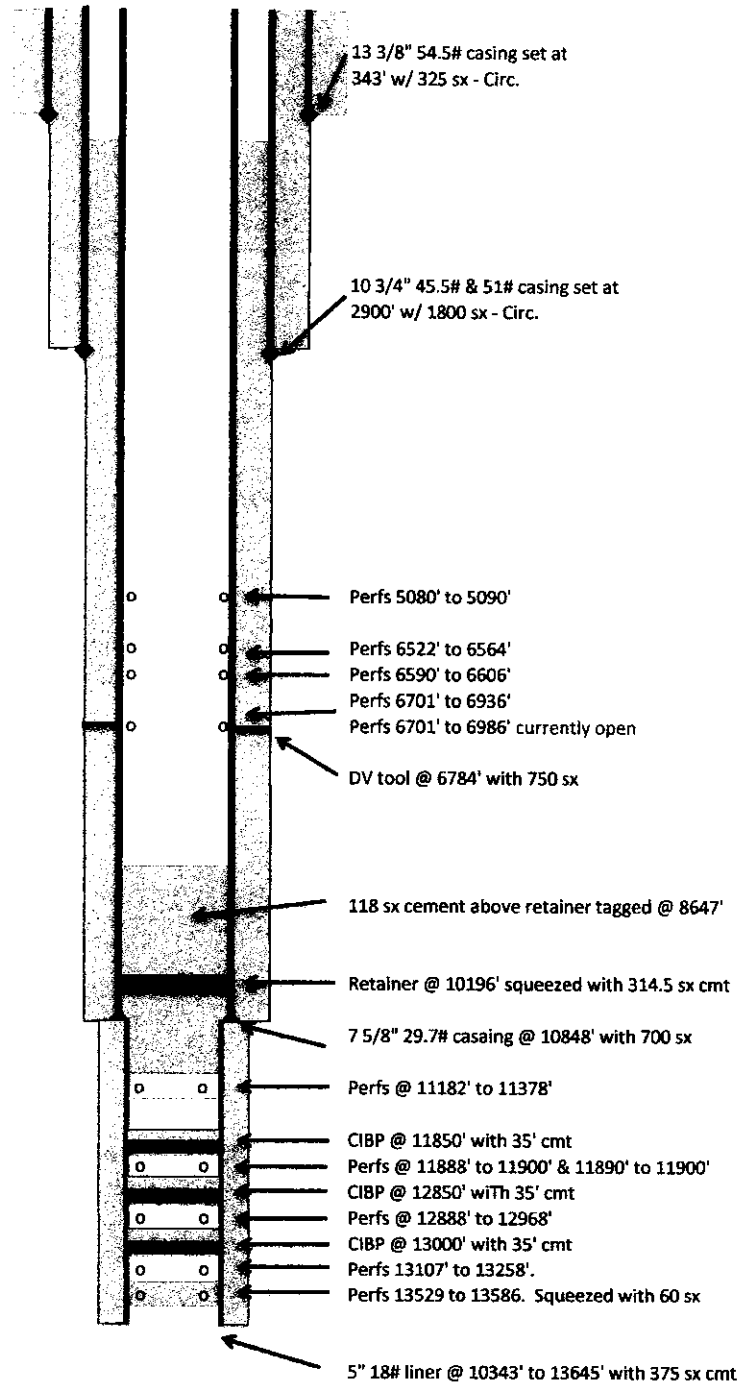
13 3/8" 54.5# casing @ 343' cemented with 325 sx. Circulated
 10 3/4" 45.5# & 51# casing @ 2900' with 1800 sx cement. Circulated
 7 5/8" 29.7# casing @ 10848' with DV tool @ 6784'. 1st stage 700 sx cement, 2nd stage 750 sx. No cement reported to surface.
 5" 18# liner from 10343' to 13645' with 375 sx cement

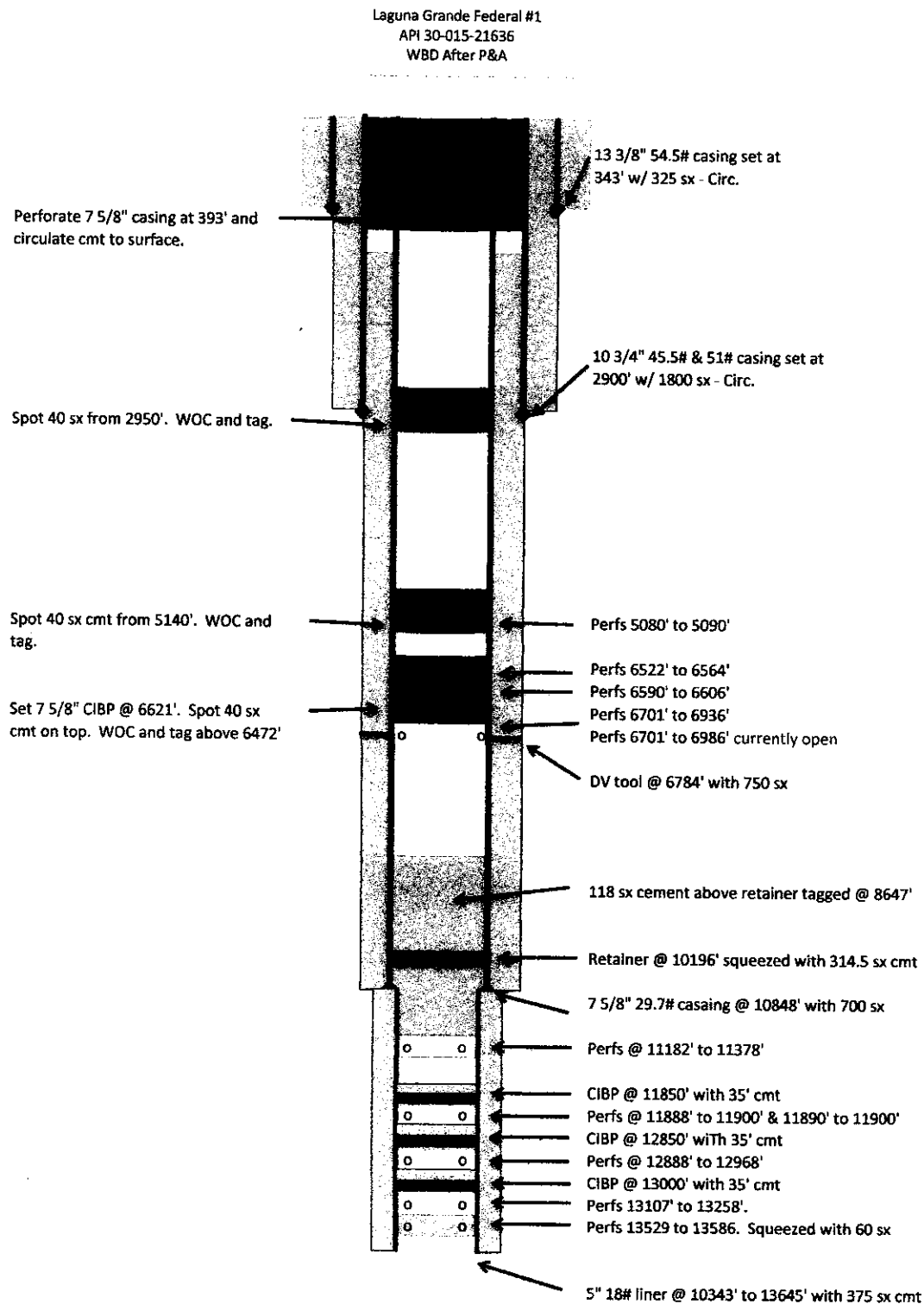
13529' to 13586'. Squeezed with 60 sx cement. 3/29/1976
 13107' to 13258'. CIBP @ 13000' with 35' cement on top. 5/24/1979
 12888' to 12968'. CIBP @ 12850' with 35' cement on top. 8/28/1980
 11888' to 11900'. Squeezed under retainer with 185 sx cement. 5/28/1980. The retainer was later drilled out. After testing and abandoning the perfs from 12888' to 12968' CIBP's with 35' cement on top were set at 11800' and 10100'. 8/23/1982
 6701' to 6936'. CIBP @ 6691' with 6 sx cement on top. 9/2/1994
 6590' to 6604'. CIBP @ 6580' with 6 sx cement on top. 9/14/1994
 6522' to 6564'. CIBP @ 6400'. No report of cement on top. 9/23/1994
 5080' to 5090'. No report on condition of these perfs. 9/25/1994
 Well was drilled back down to the Strawn. Records are unclear.
 11890' to 11900'. CIBP @ 11850' with 35' cement on top. From a NOI dated 8/15/2005
 11182 to 11378'. Retainer @ 10196' squeezed with 314.5 sx cement. Stung out of retainer and left 118 sx cement on top of retainer. Tagged cement @ 8647'. 8/9/2008
 6701' to 6986'. Currently open

Proposed Plugging Procedures

1. Lay down rods and install BOP. POOH with tubing and tally.
2. Make gauge ring run and set 7 5/8" CIBP at 6621'. Circulate MLF and test casing to 500#.
3. Spot 40 sx Class C cement on top of CIBP. WOC and tag at 6472' or higher.
4. Spot 40 sx cement from 5140'. WOC and tag
5. Spot 40 sx cement across 10 3/4" shoe from 2950'. WOC and tag.
6. Perforate 7 5/8" casing at 393'. Gain circulation and pump cement down the 7 5/8" casing to the perfs at 393' and up the annulus to surface with 160 sx cement.
7. Remove wellhead. Insure there is good cement to surface in all casing strings and install marker.

Laguna Grande Federal #1
API 30-015-21636
WBD Before P&A





District I
1625 N. French Dr., Hobbs, NM 88240
Phone:(575) 393-6161 Fax:(575) 393-0720
District II
811 S. First St., Artesia, NM 88210
Phone:(575) 748-1283 Fax:(575) 748-9720
District III
1000 Rio Brazos Rd., Aztec, NM 87410
Phone:(505) 334-6178 Fax:(505) 334-6170
District IV
1220 S. St Francis Dr., Santa Fe, NM 87505
Phone:(505) 476-3470 Fax:(505) 476-3462

State of New Mexico
Energy, Minerals and Natural Resources
Oil Conservation Division
1220 S. St Francis Dr.
Santa Fe, NM 87505

CONDITIONS

Action 44864

CONDITIONS

Operator: LAGUNA GRANDE, LLC 601 W 2nd Street Roswell, NM 88201	OGRID: 262637
	Action Number: 44864
	Action Type: [C-103] NOI Plug & Abandon (C-103F)

CONDITIONS

Created By	Condition	Condition Date
kfortner	Like approval from BLM	8/27/2021