

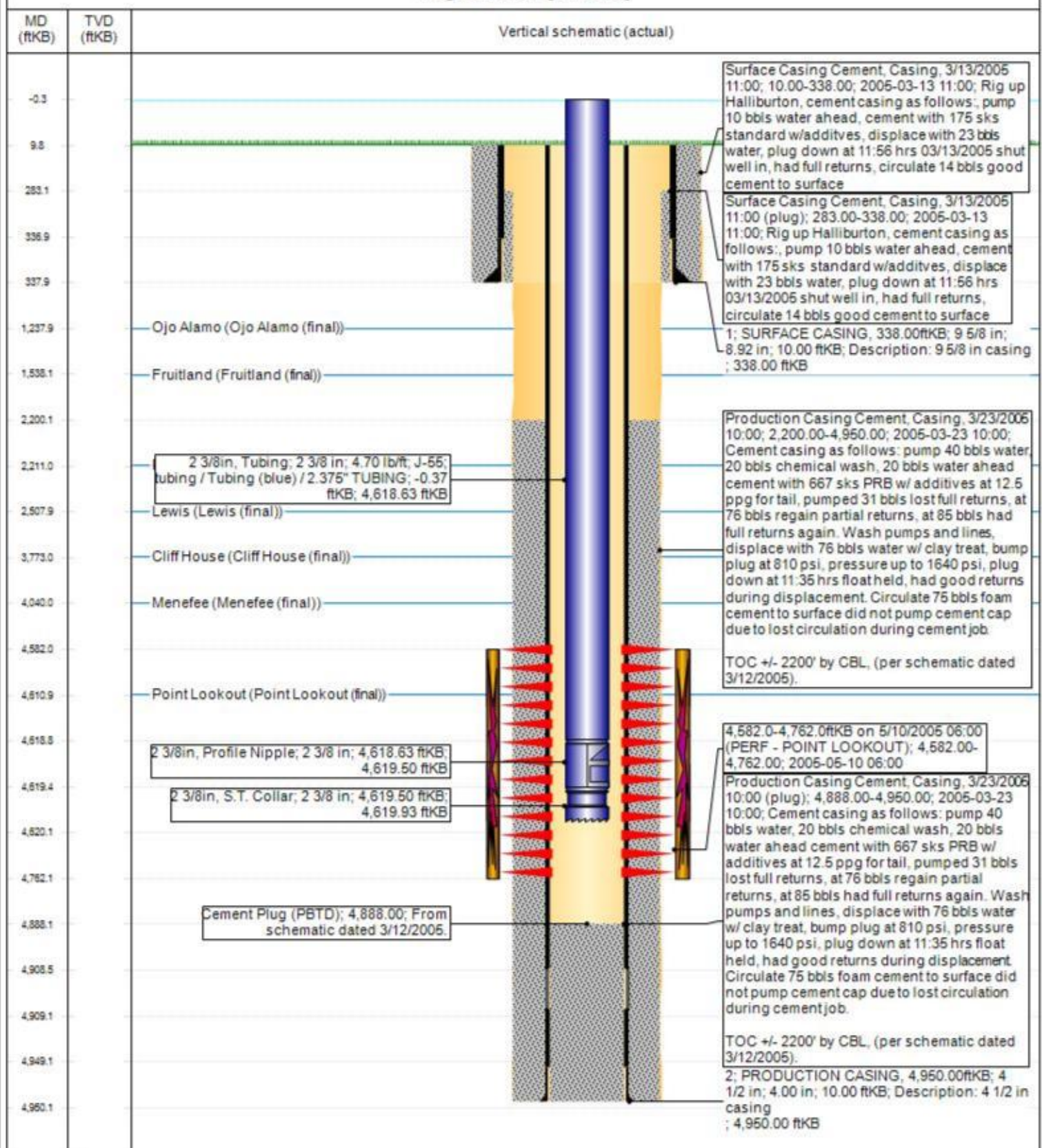


Current Schematic - Version 3

Well Name: TAFOYA #1C

API / UWI 3004532187	Surface Legal Location D-35-32N-13W	Field Name BASIN	Route 0211	State/Province NEW MEXICO	Well Configuration Type Vertical
Ground Elevation (ft) 5,966.00	Original KB/RT Elevation (ft) 5,976.00	KB-Ground Distance (ft) 10.00	KB-Casing Flange Distance (ft)	KB-Tubing Hanger Distance (ft)	

Original Hole [Vertical]



District I
1625 N. French Dr., Hobbs, NM 88240
Phone:(575) 393-6161 Fax:(575) 393-0720
District II
811 S. First St., Artesia, NM 88210
Phone:(575) 748-1283 Fax:(575) 748-9720
District III
1000 Rio Brazos Rd., Aztec, NM 87410
Phone:(505) 334-6178 Fax:(505) 334-6170
District IV
1220 S. St Francis Dr., Santa Fe, NM 87505
Phone:(505) 476-3470 Fax:(505) 476-3462

State of New Mexico
Energy, Minerals and Natural Resources
Oil Conservation Division
1220 S. St Francis Dr.
Santa Fe, NM 87505

CONDITIONS

Action 44339

CONDITIONS

Operator: HILCORP ENERGY COMPANY 1111 Travis Street Houston, TX 77002	OGRID:
	372171
	Action Number:
	44339
Action Type: [UF-WBS] Wellbore Schematic (WELLBORE SCHEMATICS)	

CONDITIONS

Created By	Condition	Condition Date
mkuehling	None	9/7/2021