

Submit 1 Copy To Appropriate District Office
District I – (575) 393-6161
 1625 N. French Dr., Hobbs, NM 88240
District II – (575) 748-1283
 811 S. First St., Artesia, NM 88210
District III – (505) 334-6178
 1000 Rio Brazos Rd., Aztec, NM 87410
District IV – (505) 476-3460
 1220 S. St. Francis Dr., Santa Fe, NM 87505

State of New Mexico
 Energy, Minerals and Natural Resources

OIL CONSERVATION DIVISION
 1220 South St. Francis Dr.
 Santa Fe, NM 87505

Form C-103

Revised July 18, 2013

WELL API NO. 30-025-05226	
5. Indicate Type of Lease STATE <input checked="" type="checkbox"/> FEE <input type="checkbox"/>	
6. State Oil & Gas Lease No. B-9774	
7. Lease Name or Unit Agreement Name Denton SWD	
8. Well Number 5	
9. OGRID Number 151416	
10. Pool name or Wildcat SWD; Penn	
SUNDRY NOTICES AND REPORTS ON WELLS (DO NOT USE THIS FORM FOR PROPOSALS TO DRILL OR TO DEEPEN OR PLUG BACK TO A DIFFERENT RESERVOIR. USE "APPLICATION FOR PERMIT" (FORM C-101) FOR SUCH PROPOSALS.) 1. Type of Well: Oil Well <input type="checkbox"/> Gas Well <input type="checkbox"/> Other SWD <input type="checkbox"/>	
2. Name of Operator FASKEN OIL AND RANCH, LTD	
3. Address of Operator 6101 HOLIDAY HILL ROAD, MIDLAND, TX 79707	
4. Well Location Unit Letter N : 660 feet from the SOUTH line and 1980 feet from the WEST line Section 2 Township 15S Range 37E NMPM County LEA	
11. Elevation (Show whether DR, RKB, RT, GR, etc.) 3798' GR	

12. Check Appropriate Box to Indicate Nature of Notice, Report or Other Data

NOTICE OF INTENTION TO:

PERFORM REMEDIAL WORK ☐ PLUG AND ABANDON ☒
 TEMPORARILY ABANDON ☐ CHANGE PLANS ☐
 PULL OR ALTER CASING ☐ MULTIPLE COMPL ☐
 DOWNHOLE COMMINGLE ☐
 CLOSED-LOOP SYSTEM ☐
 OTHER: ☐

SUBSEQUENT REPORT OF:

REMEDIAL WORK ☐ ALTERING CASING ☐
 COMMENCE DRILLING OPNS. ☐ P AND A ☐
 CASING/CEMENT JOB ☐
 OTHER: ☐

13. Describe proposed or completed operations. (Clearly state all pertinent details, and give pertinent dates, including estimated date of starting any proposed work). SEE RULE 19.15.7.14 NMAC. For Multiple Completions: Attach wellbore diagram of proposed completion or recompletion.

Fasken Oil and Ranch, Ltd proposes to Plug and Abandon the Denton SWD #5. Please see attached procedure and current and proposed-plug and abandon wellbore diagrams.

Spud Date:

Rig Release Date:

I hereby certify that the information above is true and complete to the best of my knowledge and belief.

SIGNATURE

Viola Vasquez

TITLE

Regulatory Analyst

DATE

10/04/2021

Type or print name

Viola Vasquez

E-mail address:

violav@forl.com

PHONE:

432-687-1777

For State Use Only

APPROVED BY:

TITLE

DATE

Conditions of Approval (if any):

Recommended Procedure
Denton No. 5 SWD
660' FSL & 1980' FWL
Section 2, T15S, R37E
Lea County, New Mexico
AFE No. 4210

OBJECTIVE:	Plug and Abandon
WELL DATA:	
13-3/8" 48# casing:	Set at 294.37' Cmt with 350 sx, <u>TOC surface</u>
9-5/8" 36#, 40# casing:	Set at 4595.64'. Cmt with 3000 sx, <u>TOC surface</u>
7" 23#, 26#, 29#, 32# casing:	Set at 12,729.28'. Cmt with 950 sx, TOC 9640' per temp survey. Perf 2 squeeze holes at 9200'. Squeezed 4 times under retainer to 4500 psi max (300 sx + 150 sx + 50 sx + 50 sx). Tested casing to 1000 psi, ok.
TD:	12,730'
PBTD:	10,200' (CICR)
CIBP's:	12,502' with 10' cmt dump bailed 12,355' with 10' cmt dump bailed 8990' (wireline set 8/4/2021)
Perforations:	Devonian (inactive)- 11,675'-12,572' gross interval Wolfcamp (inactive)- 9057'-9092' gross interval. Squeezed with 75 sx "C" to 3500 psi. Test casing from surface to 11,507' to 1000 psi, ok Ran CBL from 10,500' to 8500' with bad cmt from 9800'-10,500'. Squeeze under retainer at 10,200' (holes at 10,225') with 50 sx "H" Penn (disposal)- 9660'-10,148' gross interval

****Squeezed 7" x 9-5/8" annulus with 125 sx through squeeze holes at 5850' (CICR at 5750'). While RIW to drill out cement retainer and squeeze, encountered tight spot in 7" casing. Could not swage out tight spot. Ran casing inspection log and found severely deviated 7" casing at 1286' FS WLD. 5.75" swage broke off BHA at pin connection and left in well. Tagged swage with 2-7/8" tubing at 5738'. RD off well, left 7" SICP 0 psi, 7" x 9-5/8" annulus SICP 650 psi.****

1. Test and tag mast anchors.
2. Contact NMOCD with regard to rigging up on well to plug and abandon.
3. Set 250 bbl gas buster and 500 bbl frac tank. Set rig mats, catwalk, and two sets pipe racks. Receive and unload 5700' 2-3/8" N-80 yellow band work string. Clean threads and tally tubing.
4. RUPU. Bleed any pressure off 7" casing to gas buster.
5. ND capping flange and NU 5k hydraulic BOP with 2-3/8" pipe rams and blind rams.
6. RIW with 2-3/8" tubing and tag TOF at +/- 5738'. Report tag depth to Midland office. Pick up 5' and spot 50 bbls 9.5 ppg mud laden brine water up to +/- 4500' (7" 26# casing capacity 0.0383 bbl/ft). POW standing back tubing in derrick.
7. RIW with 2-3/8" x 4' perforated sub, +/- 2750' 2-3/8" tubing, 7" packer, SN, and 2-3/8" tubing. Set packer at 1240' (EOT at +/- 4000'). Test 2-3/8" x 7" annulus to 500 psi for 15 minutes. Leave pressure trapped on tubing/casing annulus while making wireline run.
8. RUWL and 3k lubricator. RIW with 1-11/16" strip gun and perforate 4 squeeze holes in 7" casing at 4650' (NOTE- pressure tubing to 500 psi before perforating). After perforating, note pressure on 2-3/8" tubing and any change in 7" x 9-5/8" annulus SICP. POW, SI tubing with TIW valve, and RDWL.
9. Bleed 7" x 9-5/8" casing to tank. Maintain 500 psi trapped on 2-3/8" x 7" annulus. Establish injection rate through squeeze holes via tubing. Pump 10 bbls dyed fresh water sweep and displace with 9.5 ppg mud laden brine. Monitor returns via 7" x 9-5/8" annulus. Calculate depth

where communication to annulus is observed based on pump rate and volume to get dyed sweep back to surface.

10. RU cement pump truck. Squeeze perforations with 45 sx Class "C" cement (14.8 ppg, 1.32 ft³/sx) and displace to 4500' with 9.5 ppg mud-laden brine water. Maintain 500 psi on 2-3/8" x 7" annulus during injection. SI tubing and WOC 4 hours. Bleed pressure off tubing/casing annulus and SI 7" x 9-5/8" annulus.
11. Release packer and check well for flow. If well is static, POW standing back tubing and LD packer. RIW with 2-3/8" x 4' perforated sub, SN, and 2-3/8" tubing and tag TOC. Report results to Midland office and NMOCD. Do not proceed to next step without Midland office and NMOCD approval.
12. POW standing back 1300' tubing in derrick and laying down remainder.
13. RIW with 7" tension packer, SN, and 2-3/8" tubing. Set packer at 1240'.
14. RUWL and 3k lubricator. RIW with 1-11/16" strip gun and perforate 4 squeeze holes at 3100'. POW and RDWL.
15. Establish injection rate through squeeze holes with returns from 7" x 9-5/8" annulus. Squeeze with 45 sx Class "C" cement (14.8 ppg, 1.32 ft³/sx) and displace to 2950' with 9.5 ppg mud-laden brine water. Maintain 500 psi on 2-3/8" x 7" annulus during injection.
16. Leave packer set at 1240'. RUWL and 3k lubricator. RIW with 1-11/16" strip gun and perforate 4 squeeze holes at 2000'. POW and RDWL.
17. Establish injection rate through squeeze holes with returns from 7" x 9-5/8" annulus. Squeeze with 45 sx Class "C" cement (14.8 ppg, 1.32 ft³/sx) and displace to 1850' with 9.5 ppg mud-laden brine water. Maintain 500 psi on 2-3/8" x 7" annulus during injection. With tubing and casing static, release packer. POW laying down packer and all but 2 joints tubing.
18. RIW with 7" tension packer and 2 jts tubing and set packer. RUWL and packoff. RIW with 1-11/16" strip gun and perforate 4 squeeze holes at 350'. POW and RDWL.
19. Establish injection rate through squeeze holes via tubing with returns from 7" x 9-5/8" annulus. Mix and circulate 110 sx Class "C" cement to surface on 7" x 9-5/8" annulus. Once cement is verified at surface, SD pump. Release packer, POW and LD tubing and packer.
20. Fill remainder of 7" casing with cement to surface.
21. Dig out and cut off wellhead. Weld cap and install dry hole marker plate onto 13-3/8" casing stub. Install 1" 2000 psi ball valve on top of marker plate.
22. RDPU and release and rental equipment. Backhaul tubing for inspection.
23. Dig out mast anchors. Clean and remediate location as per NMOCD stipulations.

Well: Denton SWD No. 5 (formerly State T No. 1)**Operator:** Fasken Oil and Ranch, Ltd.**Location:** 660' FSL and 1980' FWL
Sec 2, T15S, R37E
Lea County, NM**Spud:** 1/13/1951**API #:** 30-025-05226**TD:** 12,730'**PBTD:** cmt retainer @ 10,200'**Casing:** 13-3/8" 48# set at 294.37'

cmt w/ 350 sx, cmt circ to surface

TOC surf

9-5/8" 36# & 40# set at 4595.64'

cmt w/ 3000 sx, cmt circ to surface

TOC surf

7" 23#, 26#, 29#, 32# set at 12,729.28'

cmt w/ 950 sx, TOC 9640' per temp survey

perf 7" 2 holes at 9200', 4 squeezes (300 sx + 150 sx + 50 sx + 50 sx)

Perforations: Devonian (inactive)

12,522'-72'

12,422'-72'

12,060'-80'

12,017'-30'

11,963'-84'

11,902'-28'

11,675'-11,846'

Wolfcamp (inactive)

9057'-92' (1 jspf)

Penn

10,042'-10,148' (gross, 2 jspf, 122 holes)

9844'-10,028' (gross, 2 jspf, 172 holes)

9660'-9822' (gross, 2 jspf, 180 holes)

CIBPs: 12,502' (dump bail 10' cmt on top)

12,355' (dump bail 10' cmt on top)

Hole Sizes: 17-1/2" Surf-300'
12-1/4" 300'-4610'
8-3/4" 4610'-12,730'**Activity:**

9/16/1971- drill out Mod D pkr at 11,800' and perforate Upper Devonian (11,675'-11,846')

1/22/1972- squeeze perfs 11,675'-846' w/ 270 sx cmt to 6200 psi, drill out and test to 1500 psi, OK

Perf 11,891'-92' w/ 4 holes for block squeeze of channel behind 7" casing

Squeeze perfs 11,675'-846' broke down during block squeeze

4/1/1974- set cmt retainer at 11,543'. Squeeze perfs 11,675'-846' in 3 stgs using 2000 bbls Injectrol

400 sx "H" + 250 sx "C", squeeze to 3000 psi. **Devonian P&A on 4/6/1974**

Perf 4 holes at 9401'. Unable to pump into perfs at 4000 psi.

Set 7" CIBP at 9180'. Perforate Wolfcamp 9057'-92' gross. Acidize w/ 1000 gals 15%

10/22/1986- SWI pending further evaluation (Wolfcamp prod 10 BOPD + 221 BWPD)

9/23/1997- Fish tubing and TAC. Set pkr at 8850', test annulus to 500 psi, OK. Squeeze Wolfcamp perfs

9057'-92' w/ 75 sx "C" to max pressure 3500 psi. Drill out and RIW to 11,507'. Test

casing from surface to 11,507' to 1000 psi, OK. Ran CBL from 10,500' to 8500'

Bad cmt from 10,500' up to 9800'. Perf 7" at 10,225' and set cmt retainer at 10,200'

Squeeze under retainer w/ 50 sx "H"

Perf Penn 2 jspf 10,042'-10,148' gross (122 holes). Acidize w/ 3000 gals 15% w/ 140 BS. ISIP 798 psi

Perf Penn 2 jspf 9844'-10,028' gross (172 holes). Acidize w/ 4000 gals 15% w/ 175 BS. ISIP 380 psi

Perf Penn 2 jspf 9660'-9822' gross (180 holes). Acidize w/ 4000 gals 15% w/ 185 BS. ISIP vac

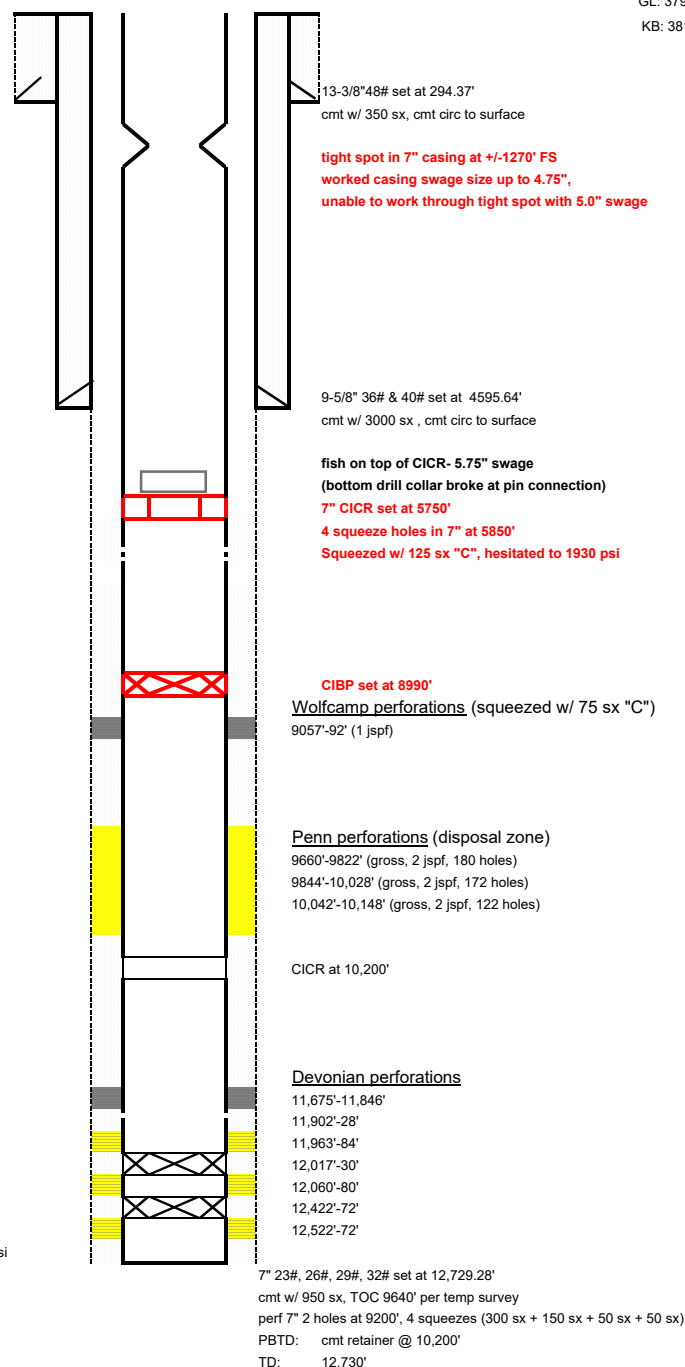
RIW w/ Baker Mod 47B-2 Lokset pkr (2.44" ID profile) w/ 4-1/2" 11.6# K-55 LT&C (TK70 + TK15)

11/27/1997- first injection into Penn- 7600 BWPD rate, 900 psi

as of 9/14/2021

GL: 3798'

KB: 3814'



Well: Denton SWD No. 5 (formerly State T No. 1)**Operator: Fasken Oil and Ranch, Ltd.****Location: 660' FSL and 1980' FWL
Sec 2, T15S, R37E**

Lea County, NM

Spud: 1/13/1951**API #: 30-025-05226****TD: 12,730'****PBTD: cmt retainer @ 10,200'****Casing: 13-3/8" 48# set at 294.37'**

cmt w/ 350 sx, cmt circ to surface

TOC surf

9-5/8" 36# & 40# set at 4595.64'

cmt w/ 3000 sx, cmt circ to surface

TOC surf

7" 23#, 26#, 29#, 32# set at 12,729.28'

cmt w/ 950 sx, TOC 9640' per temp survey

perf 7" 2 holes at 9200', 4 squeezes (300 sx + 150 sx + 50 sx + 50 sx)

Perforations: Devonian (inactive)

12,522'-72'

12,422'-72'

12,060'-80'

12,017'-30'

11,963'-84'

11,902'-28'

11,675'-11,846'

Wolfcamp (inactive)

9057'-92' (1 jsfp)

Penn

10,042'-10,148' (gross, 2 jsfp, 122 holes)

9844'-10,028' (gross, 2 jsfp, 172 holes)

9660'-9822' (gross, 2 jsfp, 180 holes)

CIBPs:

12,502' (dump bail 10' cmt on top)

12,355' (dump bail 10' cmt on top)

8990'

Hole Sizes:

17-1/2"

Surf-300'

12-1/4"

300'-4610'

8-3/4"

4610'-12,730'

Activity:

9/16/1971- drill out Mod D pkr at 11,800' and perforate Upper Devonian (11,675'-11,846')

1/22/1972- squeeze perfs 11,675'-846' w/ 270 sx cmt to 6200 psi, drill out and test to 1500 psi, OK

Perf 11,891'-92' w/ 4 holes for block squeeze of channel behind 7" casing

Squeeze perfs 11,675'-846' broke down during block squeeze

4/1/1974- set cmt retainer at 11,543'. Squeeze perfs 11,675'-846' in 3 stgs using 2000 bbls Injectrol

400 sx "H" + 250 sx "C", squeeze to 3000 psi. **Devonian P&A on 4/6/1974**

Perf 4 holes at 9401'. Unable to pump into perfs at 4000 psi.

Set 7" CIBP at 9180'. Perforate Wolfcamp 9057'-92' gross. Acidize w/ 1000 gals 15%

10/22/1986- SWI pending further evaluation (Wolfcamp prod 10 BOPD + 221 BWPD)

9/23/1997- Fish tubing and TAC. Set pkr at 8850', test annulus to 500 psi, OK. Squeeze Wolfcamp perfs

9057'-92' w/ 75 sx "C" to max pressure 3500 psi. Drill out and RIW to 11,507'. Test

casing from surface to 11,507' to 1000 psi, OK. Ran CBL from 10,500' to 8500'

Bad cmt from 10,500' up to 9800'. Perf 7" at 10,225' and set cmt retainer at 10,200'

Squeeze under retainer w/ 50 sx "H"

Perf Penn 2 jsfp 10,042'-10,148' gross (122 holes). Acidize w/ 3000 gals 15% w/ 140 BS. ISIP 798 psi

Perf Penn 2 jsfp 9844'-10,028' gross (172 holes). Acidize w/ 4000 gals 15% w/ 175 BS. ISIP 380 psi

Perf Penn 2 jsfp 9660'-9822' gross (180 holes). Acidize w/ 4000 gals 15% w/ 185 BS. ISIP vac

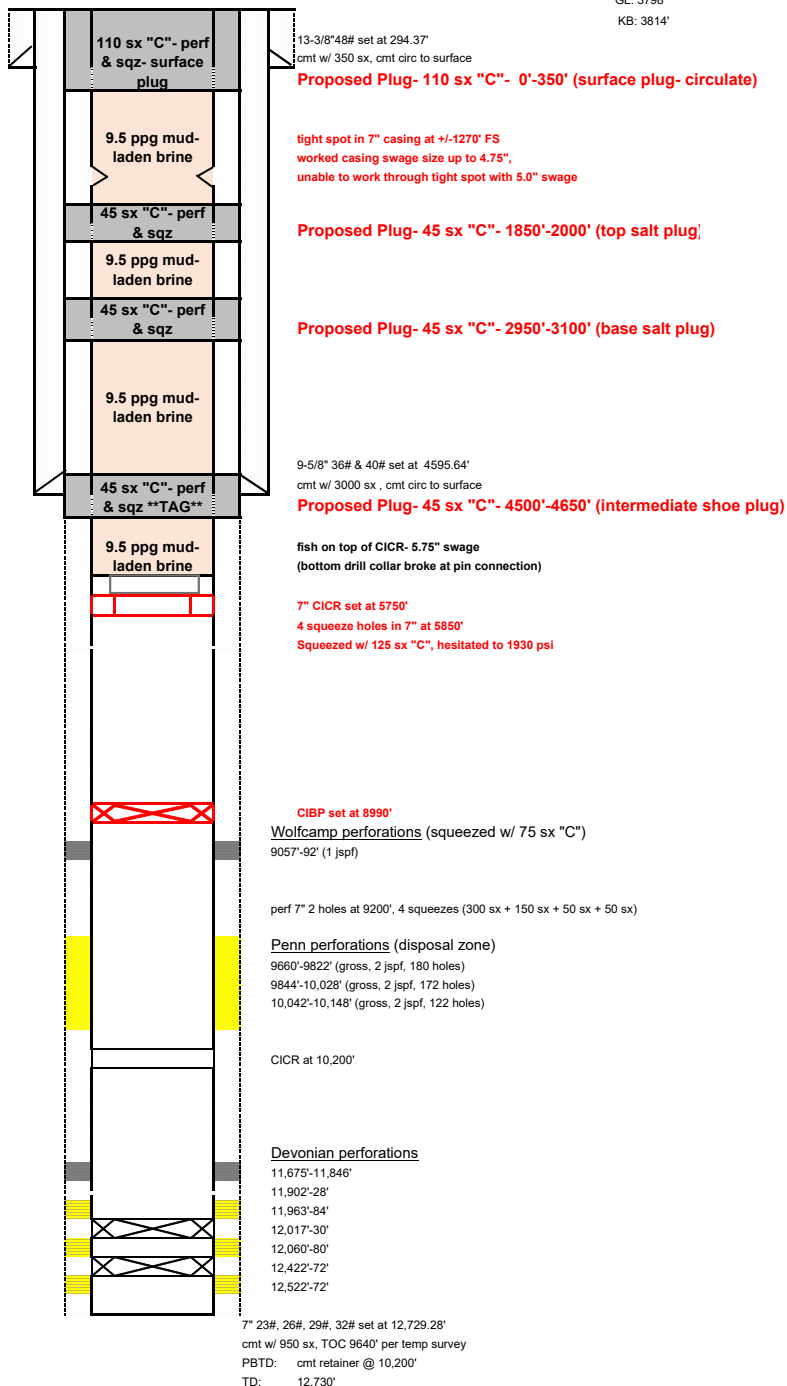
RIW w/ Baker Mod 47B-2 Lokset pkr (2.44" ID profile) w/ 4-1/2" 11.6# K-55 LT&C (TK70 + TK15)

11/27/1997- first injection into Penn- 7600 BWPD rate, 900 psi

as of 10/2/2021

GL: 3798'

KB: 3814'



District I
1625 N. French Dr., Hobbs, NM 88240
Phone:(575) 393-6161 Fax:(575) 393-0720
District II
811 S. First St., Artesia, NM 88210
Phone:(575) 748-1283 Fax:(575) 748-9720
District III
1000 Rio Brazos Rd., Aztec, NM 87410
Phone:(505) 334-6178 Fax:(505) 334-6170
District IV
1220 S. St Francis Dr., Santa Fe, NM 87505
Phone:(505) 476-3470 Fax:(505) 476-3462

State of New Mexico
Energy, Minerals and Natural Resources
Oil Conservation Division
1220 S. St Francis Dr.
Santa Fe, NM 87505

CONDITIONS

Action 53616

CONDITIONS

Operator: FASKEN OIL & RANCH LTD 6101 Holiday Hill Midland, TX 79707	OGRID: 151416
	Action Number: 53616
	Action Type: [C-103] NOI Plug & Abandon (C-103F)

CONDITIONS

Created By	Condition	Condition Date
pkautz	plug at the shoe for the 9 5/8-inch has to be successful before proceeding with the shallower plugs.	10/4/2021
pkautz	Must notify Kerry Fortner with the OCD at least 24 hours prior to commencing plugging	10/4/2021
pkautz	Must tag 7 5/8 shoe plug	10/4/2021