

Well Name: JICARILLA APACHE B	Well Location: T24N / R5W / SEC 20 / NENE / 36.302707 / 107.378582	County or Parish/State: RIO ARRIBA / NM
Well Number: 9	Type of Well: CONVENTIONAL GAS WELL	Allottee or Tribe Name: JICARILLA APACHE
Lease Number: JIC11	Unit or CA Name:	Unit or CA Number:
US Well Number: 3003905420	Well Status: Gas Well Shut In	Operator: DJR OPERATING LLC

Subsequent Report

Type of Submission: Subsequent Report	Type of Action: Plug and Abandonment
Date Sundry Submitted: 03/12/2021	Time Sundry Submitted: 11:54
Date Operation Actually Began: 02/25/2021	

Actual Procedure: The subject well was Plugged & Abandoned on 02/25/21 per the attached detailed Wellbore Diagram and Marker.

SR Attachments

Actual Procedure

- Jicarilla_Apache_B_9_PA_Marker_20210312115426.pdf
- Jicarilla_Apache_B_9_EOWR_20210312115426.pdf

Well Name: JICARILLA APACHE B	Well Location: T24N / R5W / SEC 20 / NENE / 36.302707 / 107.378582	County or Parish/State: RIO ARRIBA / NM
Well Number: 9	Type of Well: CONVENTIONAL GAS WELL	Allottee or Tribe Name: JICARILLA APACHE
Lease Number: JIC11	Unit or CA Name:	Unit or CA Number:
US Well Number: 3003905420	Well Status: Gas Well Shut In	Operator: DJR OPERATING LLC

Operator Certification

I certify that the foregoing is true and correct. Title 18 U.S.C. Section 1001 and Title 43 U.S.C. Section 1212, make it a crime for any person knowingly and willfully to make to any department or agency of the United States any false, fictitious or fraudulent statements or representations as to any matter within its jurisdiction. Electronic submission of Sundry Notices through this system satisfies regulations requiring a submission of Form 3160-5 or a Sundry Notice.

Operator Electronic Signature: FORD

Signed on: MAR 12, 2021 11:54 AM

Name: DJR OPERATING LLC

Title: Regulatory Specialist

Street Address: 1700 LINCOLN STREET, SUITE 2800

City: DENVER

State: CO

Phone: (505) 632-3476

Email address:

Field Representative

Representative Name:

Street Address:

City:

State:

Zip:

Phone:

Email address:

P&A End of Well Report
DJR Operating, LLC
Jicarilla Apache B #009
API: 30-039-05420
NENE A-20-24N-5W
Rio Arriba County, NM

Spud Date: 03/23/1962

Plugged Date: 02/25/2021

Dakota

2/10/21 to 2/11/21: Perfs 6586' – 6657'. Plugs 1, 2 & 3: Spot balanced Plug 1 from 6670' with 14 sx Class G + 2% CaCl₂. WOC, tagged at 6600'. Mix and pump Plug 2 from 6582' with 17 sx Class G + 2% CaCl₂, WOC, tagged plug at 6600'. Mix and pump Plug 3 from 6582' with 20 sx Class G + 2% CaCl₂, WOC. Tagged Plug 3 at 6021'. Run CBL.

Gallup/Mancos

2/12/21: Plug 4: Spot a balanced plug of 42 sx Class G + 2% CaCl₂ inside from 5526' to 4532'. WOC, Tagged plug 4 at 4203' with WL. TOC: 4490'

Mesa Verde

2/22/21: Plug 5: Perforate 3790', CR set at 3740'. Could not pump into holes, BLM/OCD OK to pump inside plug from 3740' with 10 sx Class G cement, WOC, tagged at 3496'.

Chacra

2/22/21: Plug 6: Perforate 3092', CR set at 3055', Mix and pump 50 sx Class G cement (48 outside, 2 under CR, 5 above CR. Tagged at 2857'.

Pictured Cliffs/Fruitland

2/23/21: Plug 7 & 8: Mixed and pumped balanced plug inside from 2274', WOC, tagged at 2024'. Mixed and spotted Plug 8 from 2024', reverse at 1944', WOC. Tagged PC / Frlnd plug at 1945'.

Kirtland/Ojo Alamo

2/24/21: Plug 9: Perforate 1926'. CR set 1871', Pump 95 sx Class G + 2% CaCl₂ (79 sx outside csg, 2 sx under CR, sting out, place 14 sx on top of CR. WOC, tagged TOC at 1340'.

Nacimiento

2/24/21: Plug 10: Perforate 390'. CR set at 373'. Pump 100 sx Class G + 2% CaCl₂ through CR, displace to CR, TOOH, WOC. Run CBL from 357'. TOC at 125'.

2/25/21: Plug 11: TIH to 373', Mix and pump 10 sx Class G + 2% CaCl₂ from 373'. Pull up to 134', reverse out, WOC. Tag at 134'. PT 800 psi. Good Test. Perforate 6 holes at 100'

2/25/21: Plug 12: Mix and bullhead 54 sx Class G cement from surface, out holes at 100' and out BH. Good cement returns.

P&A MARKER: 24" x 24" Steel plate installed at ground level

All Cement used: Class G cement mixed at 15.8 ppg, yield 1.15

BLM Representatives onsite to witness: Jared Benally & Derrick McCuller

P & A End of Well Report **DJR Operating, LLC**

Jicarilla Apache B 9
API 30-039-05420
NE/NE, Unit A, Sec 20, T24N, R05W
Rio Arriba County, NM

GL 6567'
KB 6577'
Spud Date 3/23/1962

**P&A MARKER IS A 24" x 24" STEEL PLATE
INSTALLED AT GROUND LEVEL**

SURF CSG

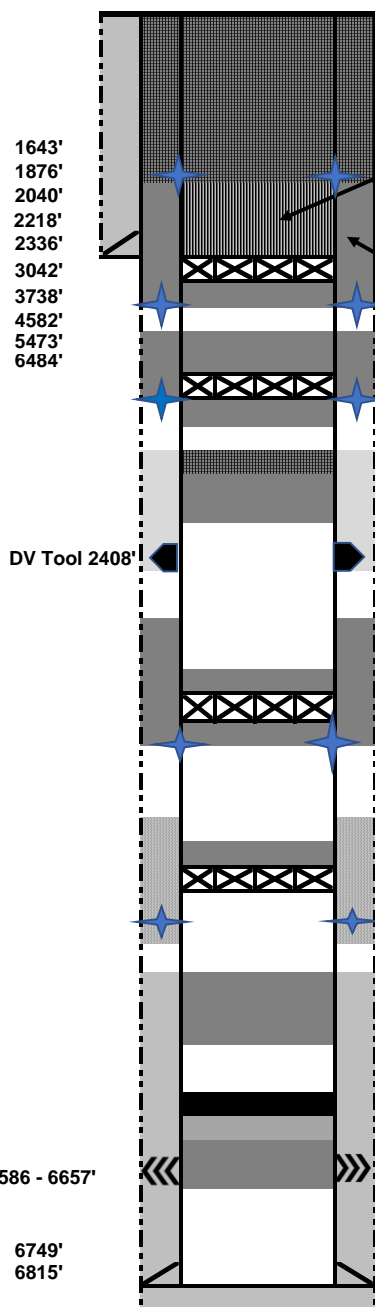
Hole size 13.75"
Csg Size: 9.625"
Wt: 25.4#
Grade: N/A
ID: 8.95"
Depth 174'
Csg cap ft³: 0.448
Csg/Csg ft³: 0.3144
Csg/OH cap 0.8307
TOC: Cir surf

FORMATION TOPS

Nacimiento 1643'
Ojo Alamo 1876'
Kirtland 2040'
Fruitland 2218'
Pictured Cliffs 2336'
Lewis 3042'
Chacra 3738'
Mesa Verde 4582'
Mancos 5473'
Gallup 6484'
Dakota

PROD CSG

Hole size 7.875"
Csg Size: 3.5"
Wt: 9.2#
Grade: J-55
ID: 2.992"
Depth 6811'
Csg cap ft³: 0.0488
Csg/Csg 0.3144
Ann ft³:
Csg/OH cap 0.2714
TOC: See dia



2-25-2021: Plug 12: Mix and bullhead 54 sx Class G cement from surface, out holes at 100' and out BH. Good cement returns.

Perforate 6 holes at 100'.

2-25-2021: Plug 11: TIH to 373', Mix and pump 10 sx Class G + 2% CaCl₂ from 373. Pull up to 134', reverse out, WOC. Tag at 134'. Good PT 800 psi.

Run CBL from 357', TOC at 125'.

2-24-2021: Plug 10: Nacimiento: Perforate 390'. CR set at 373'. Pump 100 sx Class G + 2% CaCl₂ through CR, displace to CR, TOOH, WOC.

2-24-2021: Plug 9: Kirtland, Ojo Alamo. Perforate 1926'. CR set 1871', Pump 95 sx Class G + 2% CaCl₂ (79 sx outside csg, 2 sx under CR, sting out, place 14 sx on top of CR. WOC, tagged TOC at 1340'.

TOC +/- 1980' (CBL)

2-23-2021: Plug 7 & 8: Pictured Cliffs/Fruitland. Mixed and pumped balanced plug inside from 2274', WOC, tagged at 2024'. Mixed and spotted Plug 8 from 2024', reverse at 1944', WOC. Tagged PC / Frt plug at 1945'.

2-22-2021: Plug 6: Chacra. Perforate 3092', CR set at 3055', Mix and pump 50 sx Class G cement (48 outside, 2 under CR, 5 above CR. Tagged at 2857'.

2-22-2021: Plug 5: Mesa Verde. Perforate 3790', CR set at 3740'. Could not pump into holes, BLM/OCD OK to pump inside plug from 3740' with 10 sx Class G cement, WOC, tagged at 3496'.

TOC 4490' CBL

2-12-2021: Plug 4: Gallup and Mancos. Spot a balanced plug of 42 sx Class G + 2% CaCl₂ inside from 5526' to 4532'. WOC, Tagged plug 4 at 4203' with WL.

2-11-2021 Run CBL log

2-10&11-2021: Plugs 1, 2 & 3: Dakota. Spot balanced Plug 1 from 6670' with 14 sx Class G + 2% CaCl₂. WOC, tagged at 6600'. Mix and pump Plug 2 from 6582' with 17 sx Class G + 2% CaCl₂, WOC, tagged plug at 6600'. Mix and pump Plug 3 from 6582' with 20 sx Class G + 2% CaCl₂, WOC. Tagged Plug 3 at 6021'.

Dakota perms: 6586 - 6657'

PBTD 6749'
TD 6815'

All Cement used; Class G cement mixed at 15.8 ppg, yield 1.15
GPS Coordinates; 36.302732, -107.378755
Regulatory representatives, Jared Benally & Derrick McCuller, BLM

District I
1625 N. French Dr., Hobbs, NM 88240
Phone:(575) 393-6161 Fax:(575) 393-0720
District II
811 S. First St., Artesia, NM 88210
Phone:(575) 748-1283 Fax:(575) 748-9720
District III
1000 Rio Brazos Rd., Aztec, NM 87410
Phone:(505) 334-6178 Fax:(505) 334-6170
District IV
1220 S. St Francis Dr., Santa Fe, NM 87505
Phone:(505) 476-3470 Fax:(505) 476-3462

State of New Mexico
Energy, Minerals and Natural Resources
Oil Conservation Division
1220 S. St Francis Dr.
Santa Fe, NM 87505

CONDITIONS

Action 55490

CONDITIONS

Operator: DJR OPERATING, LLC 1 Road 3263 Aztec, NM 87410	OGRID: 371838
	Action Number: 55490
	Action Type: [C-103] Sub. Plugging (C-103P)

CONDITIONS

Created By	Condition	Condition Date
mkuehling	marker set at ground level - missing document from Kurt Sandoval/Jicarilla Apache Tribe/BIA submit as soon as possible.	10/19/2021