

Submit 1 Copy To Appropriate District Office  
 District I - (575) 393-6161  
 1625 N. French Dr., Hobbs, NM 88240  
 District II - (575) 748-1283  
 811 S. First St., Artesia, NM 88210  
 District III - (505) 334-6178  
 1000 Rio Brazos Rd., Aztec, NM 87410  
 District IV - (505) 476-3460  
 1220 S. St. Francis Dr., Santa Fe, NM 87505

State of New Mexico  
 Energy, Minerals and Natural Resources

OIL CONSERVATION DIVISION  
 1220 South St. Francis Dr.  
 Santa Fe, NM 87505

Form C-103  
 Revised July 18, 2013

SUNDRY NOTICES AND REPORTS ON WELLS (DO NOT USE THIS FORM FOR PROPOSALS TO DRILL OR TO DEEPEN OR PLUG BACK TO A DIFFERENT RESERVOIR. USE "APPLICATION FOR PERMIT" (FORM C-101) FOR SUCH PROPOSALS.)		WELL API NO. 30-031-05179
1. Type of Well: Oil Well <input checked="" type="checkbox"/> Gas Well <input type="checkbox"/> Other <input type="checkbox"/>		5. Indicate Type of Lease STATE <input type="checkbox"/> FEE <input checked="" type="checkbox"/>
2. Name of Operator Dominion Production Company, LLC		6. State Oil & Gas Lease No.
3. Address of Operator 1414 W Swann Av, Suite 100, Tampa, FL 33606		Lease Name or Unit Agreement Name Hospah Sand Unit
4. Well Location Unit Letter <u>F</u> : <u>2030</u> feet from the <u>N</u> line and <u>1970</u> feet from the <u>W</u> line Section <u>1</u> Township <u>17N</u> Range <u>9W</u> NMPM County <u>McKinley</u>		8. Well Number <u>38</u>
11. Elevation (Show whether DR, RKB, RT, GR, etc.) 6940' GR		9. OGRID Number
10. Pool name or Wildcat Upper Hospah		

12. Check Appropriate Box to Indicate Nature of Notice, Report or Other Data

NOTICE OF INTENTION TO:		SUBSEQUENT REPORT OF:	
PERFORM REMEDIAL WORK <input type="checkbox"/>	PLUG AND ABANDON <input type="checkbox"/>	REMEDIAL WORK <input type="checkbox"/>	ALTERING CASING <input type="checkbox"/>
TEMPORARILY ABANDON <input type="checkbox"/>	CHANGE PLANS <input type="checkbox"/>	COMMENCE DRILLING OPNS. <input type="checkbox"/>	P AND A <input checked="" type="checkbox"/>
PULL OR ALTER CASING <input type="checkbox"/>	MULTIPLE COMPL <input type="checkbox"/>	CASING/CEMENT JOB <input type="checkbox"/>	
DOWNHOLE COMMINGLE <input type="checkbox"/>			
CLOSED-LOOP SYSTEM <input type="checkbox"/>			
OTHER: <input type="checkbox"/>		OTHER: <input type="checkbox"/>	

13. Describe proposed or completed operations. (Clearly state all pertinent details, and give pertinent dates, including estimated date of starting any proposed work). SEE RULE 19.15.7.14 NMAC. For Multiple Completions: Attach wellbore diagram of proposed completion or recompletion.

Dominion Production Company plugged this well in accordance with the attached report.

Spud Date:

7/23/2019

Rig Release Date:

8/2/2019

I hereby certify that the information above is true and complete to the best of my knowledge and belief.

SIGNATURE Kimurand TITLE Manager DATE 7/27/2021

Type or print name David Burns E-mail address: db@cogllc.com PHONE: 337-534-8686

**For State Use Only**

APPROVED BY: Monica Kuehling TITLE Deputy Oil and Gas Inspector DATE 11/10/2021

Conditions of Approval (if any):

## **Dominion Production**

### **Plug And Abandonment End Of Well Report**

#### **Hospah Sand Unit 38**

2030' FNL & 1970' FWL, Section 1, T17N, R9W

McKinley County, NM / API 30-031-05179

#### **Work Summary:**

- 7/23/19** R/U P&A rig. L/D rod string and rod pump. L/D tubing string. R/U wire line services. Ran CBL from TD at 1556' to surface. CBL results were sent to NMOCD office for review. CBL indicated TOC below Mancos formation top. RIH and perforated Mancos formation top at 750'. R/D and MOL.
- 7/30/19** Made BLM, and NMOCD P&A operations notifications at 12:00 PM MST.
- 7/31/19** MOL and R/U P&A rig. Checked well pressures: Tubing: 0 psi, Casing: 0 psi, Bradenhead: 0 psi. Bled down well. N/D wellhead, N/U BOP and function tested. P/U work string and tallied on the way in the hole to a depth of 1556'. R/U cementing services. Circulated 25 bbls of crude oil out of wellbore. Pumped plug #1 from 1556'-1350' to cover the Upper Hospah open hole interval and formation top. WOC overnight. Shut-in well for the day. Jonathan Kelly was NMOCD inspector on location.
- 8/1/19** Checked well pressures: Tubing: 0 psi, Casing: 0 psi, Bradenhead: 0 psi. Bled down well. TIH and tagged cement at 1300'. TOO. P/U CR, TIH and set at 700'. R/U cementing services. Squeezed 65 sx of cement through CR at 700'. Stung out of CR and spotted 36 sx of cement on top of CR at 700'. WOC 4 hours. TIH and tagged cement at 340'. L/D all tubing. R/U wire line services. RIH and perforated squeeze holes at 100'. Successfully established circulation down through perforations at 100' and back around and out Bradenhead valve at surface. Successfully circulated cement down through

perforations at 100' and back around and out Bradenhead valve at surface. WOC overnight. Shut-in well for the day. Jonathan Kelly was NMOCD inspector on location.

**8/2/19**

Checked well pressures: Tubing: 0 psi, Casing: 0 psi, Bradenhead: 0 psi. Bled down well. N/D BOP and cut-off wellhead. Installed P&A marker per NMOCD/BLM standards. Ran weighted tally tape down 5.5" production casing and tagged cement 10' down. Ran ¾" poly pipe down 5.5" casing and topped-off well with 50 sx of cement. Photographed the P&A marker in place and recorded its location via GPS coordinates. R/D and MOL. Jonathan Kelly was NMOCD inspector on location.

### **Plug Summary:**

#### **Plug #1: (Upper Hospah Sand Open Hole Interval and Formation Top 1556'-1300', 30 Sacks Class G Cement)**

Mixed 30 sx Class G cement and spotted a balanced plug to cover the Upper Hospah Sand open hole interval and formation top.

#### **Plug #2: (Mancos and Pt. Lookout Formation Tops 750'-340', 101 Sacks Class G Cement(Squeezed 65 sacks))**

RIH and perforated squeeze holes at 750'. Successfully established injection rate into perforations at 750'. P/U CR, TIH and set at 700'. Squeezed 65 sx of cement below CR at 700'. Stung out of CR and spotted 36 sx of cement on top of CR at 700' to cover the Mancos and Pt. Lookout formation tops.

#### **Plug #3: (Surface Casing Shoe 100'-Surface, 104 Sacks Class G Cement(50 sx for top-off))**

RIH and perforated squeeze holes at 100'. Successfully established circulation down through perforations at 100' and back around and out Bradenhead valve at surface. Successfully circulated cement down through perforations at 100' and back around and out Bradenhead valve at surface. WOC overnight. N/D BOP and cut-off wellhead. Installed P&A marker per NMOCD/BLM standards. Ran weighted tally tape down 5.5" production casing and tagged cement 10' down. Ran ¾" poly pipe down 5.5" casing and topped-off well with 50 sx of cement. Photographed the P&A marker in place and recorded its location via GPS coordinates. R/D and MOL.

---

## Wellbore Diagram

Hospah Sand Unit 38  
API #: 3003105179  
McKinley County, New Mexico

### Plug 3

100 feet - Surface  
100 feet plug  
104 sacks of Class G Cement  
50 sacks for top-off

### Plug 2

750 feet - 340 feet  
410 feet plug  
101 sacks of Class G Cement  
65 sacks squeezed

### Plug 1

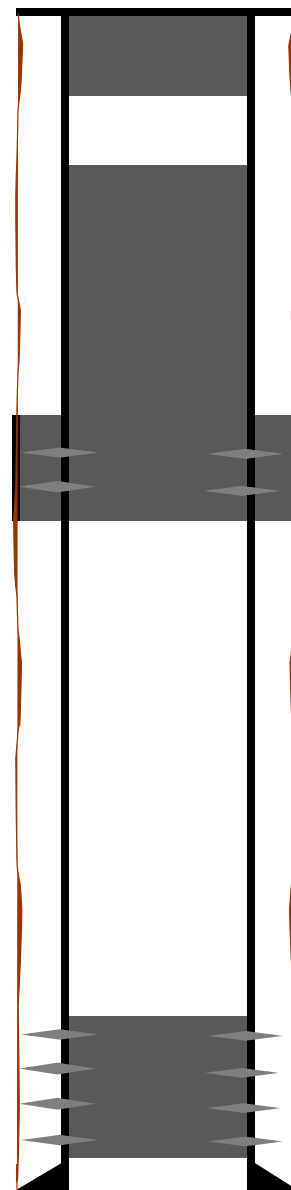
1556 feet - 1300 feet  
256 feet plug  
30 sacks of Class G Cement

### Surface Casing

8.625" 24# @ 73 ft

### Production Casing

5.5" 14# @ 1557 ft



**District I**  
1625 N. French Dr., Hobbs, NM 88240  
Phone:(575) 393-6161 Fax:(575) 393-0720  
**District II**  
811 S. First St., Artesia, NM 88210  
Phone:(575) 748-1283 Fax:(575) 748-9720  
**District III**  
1000 Rio Brazos Rd., Aztec, NM 87410  
Phone:(505) 334-6178 Fax:(505) 334-6170  
**District IV**  
1220 S. St Francis Dr., Santa Fe, NM 87505  
Phone:(505) 476-3470 Fax:(505) 476-3462

**State of New Mexico**  
**Energy, Minerals and Natural Resources**  
**Oil Conservation Division**  
**1220 S. St Francis Dr.**  
**Santa Fe, NM 87505**

CONDITIONS  
  
Action 39983

CONDITIONS

Operator: DOMINION PRODUCTION COMPANY, LLC 1414 W Swann Avenue Tampa, FL 33606	OGRID: 291567
	Action Number: 39983
	Action Type: [C-103] Sub. Plugging (C-103P)

CONDITIONS

Created By	Condition	Condition Date
mkuehling	None	11/10/2021