

Well Name: DIRE WOLF 12 FED	Well Location: T26S / R30E / SEC 12 / NWSE / 32.05433 / -103.834514	County or Parish/State: EDDY / NM
Well Number: 708H	Type of Well: OIL WELL	Allottee or Tribe Name:
Lease Number: NMNM94610	Unit or CA Name:	Unit or CA Number:
US Well Number: 300154761800X1	Well Status: Approved Application for Permit to Drill	Operator: EOG RESOURCES INCORPORATED

Notice of Intent

Sundry ID: 2640007

Type of Submission: Notice of Intent	Type of Action: Other
Date Sundry Submitted: 10/14/2021	Time Sundry Submitted: 01:09
Date proposed operation will begin: 10/27/2021	

Procedure Description: EOG respectfully requests an amendment to our approved APD for this well to reflect the following changes: Change BHL to T-26-S, R-30-E, Sec 13, 330' FSL, 2310' FWL, Eddy Co., N.M.

Surface Disturbance

Is any additional surface disturbance proposed?: No

NOI Attachments

Procedure Description

- Dire\_Wolf\_12\_Fed\_708H\_Sundry\_Info\_\_Dual\_\_\_\_Rev\_BHL\_10.13.2021\_20211014130907.pdf
- Dire\_Wolf\_12\_Fed\_708H\_C\_102\_20211014130850.pdf

<b>Well Name:</b> DIRE WOLF 12 FED	<b>Well Location:</b> T26S / R30E / SEC 12 / NWSE / 32.05433 / -103.834514	<b>County or Parish/State:</b> EDDY / NM
<b>Well Number:</b> 708H	<b>Type of Well:</b> OIL WELL	<b>Allottee or Tribe Name:</b>
<b>Lease Number:</b> NMNM94610	<b>Unit or CA Name:</b>	<b>Unit or CA Number:</b>
<b>US Well Number:</b> 300154761800X1	<b>Well Status:</b> Approved Application for Permit to Drill	<b>Operator:</b> EOG RESOURCES INCORPORATED

Conditions of Approval

Additional Reviews

Break\_Testing\_Approved\_Carlsbad\_20211102150742.pdf

Operator Certification

I certify that the foregoing is true and correct. Title 18 U.S.C. Section 1001 and Title 43 U.S.C. Section 1212, make it a crime for any person knowingly and willfully to make to any department or agency of the United States any false, fictitious or fraudulent statements or representations as to any matter within its jurisdiction. Electronic submission of Sundry Notices through this system satisfies regulations requiring a submission of Form 3160-5 or a Sundry Notice.

**Operator Electronic Signature:** STAR HARRELL  
**Signed on:** OCT 14, 2021 01:09 PM  
**Name:** EOG RESOURCES INCORPORATED  
**Title:** Regulatory Specialist  
**Street Address:** 5509 CHAMPIONS DRIVE  
**City:** MIDLAND **State:** TX  
**Phone:** (432) 848-9161  
**Email address:** STAR\_HARRELL@EOGRESOURCES.COM

Field Representative

**Representative Name:** Eric Brorman  
**Street Address:** 5509 Champions Drive  
**City:** Midland **State:** TX **Zip:** 79706  
**Phone:** (432)556-1276  
**Email address:** eric\_brorman@eogresources.com

BLM Point of Contact

**BLM POC Name:** CHRISTOPHER WALLS  
**BLM POC Phone:** 5752342234  
**Disposition:** Approved  
**Signature:** Chris Walls  
**BLM POC Title:** Petroleum Engineer  
**BLM POC Email Address:** cwalls@blm.gov  
**Disposition Date:** 11/02/2021

DISTRICT I  
1625 N. French Dr., Hobbs, NM 88240  
Phone: (575) 393-6161 Fax: (575) 393-0720

DISTRICT II  
811 S. First St., Artesia, NM 88210  
Phone: (575) 748-1283 Fax: (575) 748-9720

DISTRICT III  
1000 Rio Brazos Rd., Aztec, NM 87410  
Phone: (505) 334-6178 Fax: (505) 334-6170

DISTRICT IV  
1220 S. St. Francis Dr., Santa Fe, NM 87505  
Phone: (505) 476-3460 Fax: (505) 476-3462

State of New Mexico  
Energy, Minerals & Natural Resources Department  
OIL CONSERVATION DIVISION  
1220 South St. Francis Dr.  
Santa Fe, New Mexico 87505

Form C-102

Revised August 1, 2011

Submit one copy to appropriate  
District Office

☐ AMENDED REPORT

## WELL LOCATION AND ACREAGE DEDICATION PLAT

API Number <b>30-015-47618</b>	Pool Code <b>98220</b>	Pool Name <b>Purple Sage; Wolfcamp (Gas)</b>
Property Code <b>329773</b>	Property Name <b>DIRE WOLF 12 FED</b>	Well Number <b>708H</b>
OGRID No. <b>7377</b>	Operator Name <b>EOG RESOURCES, INC.</b>	Elevation <b>3196'</b>

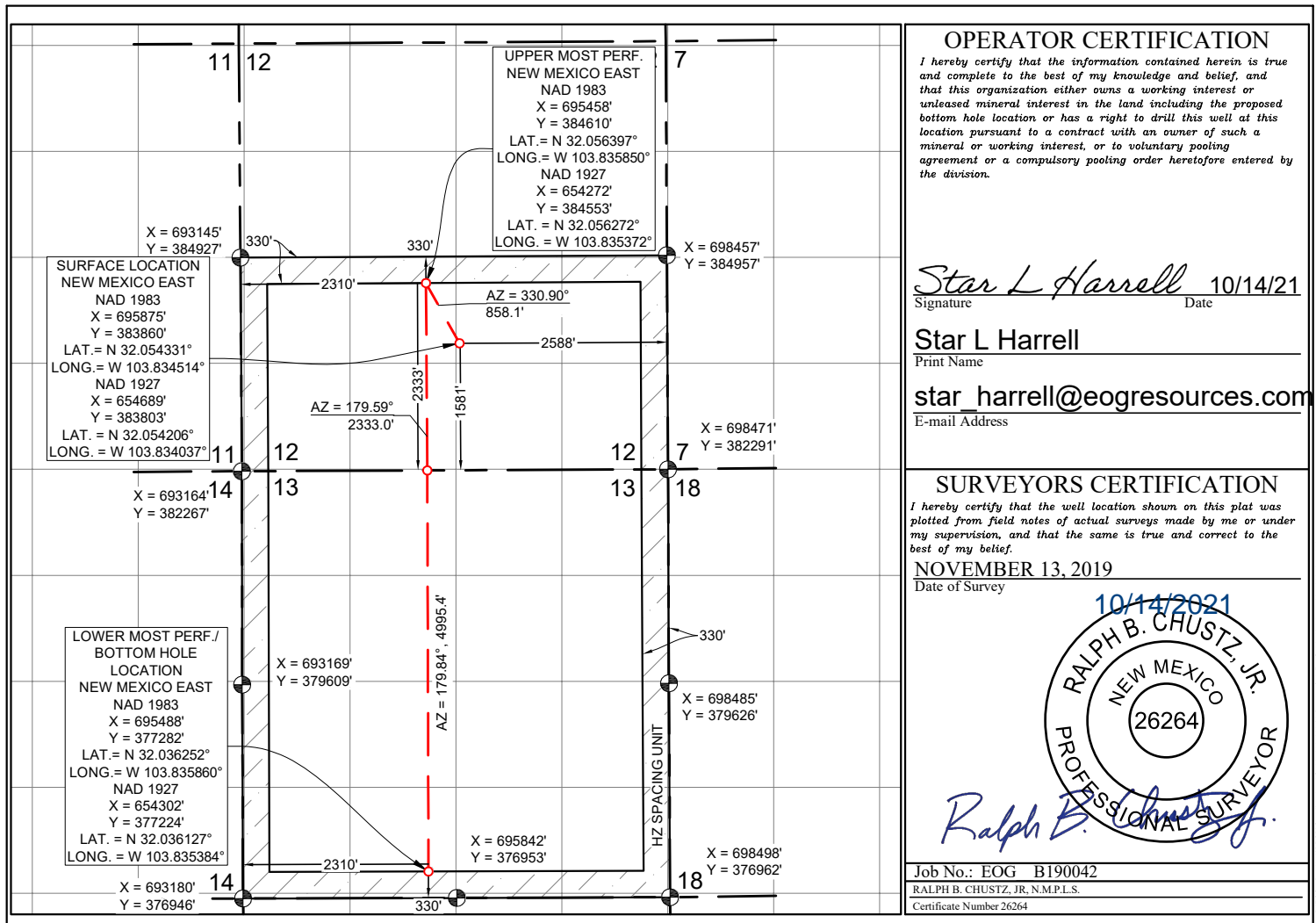
## Surface Location

UL or lot no.	Section	Township	Range	Lot Idn	Feet from the	North/South line	Feet from the	East/West line	County
<b>J</b>	<b>12</b>	<b>26 S</b>	<b>30 E</b>		<b>1581</b>	<b>SOUTH</b>	<b>2588</b>	<b>EAST</b>	<b>EDDY</b>

## Bottom Hole Location If Different From Surface

UL or lot no.	Section	Township	Range	Lot Idn	Feet from the	North/South line	Feet from the	East/West line	County
<b>N</b>	<b>13</b>	<b>26 S</b>	<b>30 E</b>		<b>330</b>	<b>SOUTH</b>	<b>2310</b>	<b>WEST</b>	<b>EDDY</b>
Dedicated Acres <b>960.00</b>	Joint or Infill	Consolidated Code	Order No.						

No allowable will be assigned to this completion until all interests have been consolidated or a non-standard unit has been approved by the division.



**Dire Wolf 12 Fed 708H****Revised Permit Information 10/13/2021:**

Well Name: Dire Wolf 12 Fed 708H

Location: SHL: 1581' FSL &amp; 2588' FEL, Section 12, T-26-S, R-30-E, Eddy Co., N.M.

BHL: 330' FSL &amp; 2310' FWL, Section 13, T-26-S, R-30-E, Eddy Co., N.M.

**Casing Program:**

Hole Size	Interval	Csg OD	Weight	Grade	Conn	DFmin Collapse	DFmin Burst	DFmin Tension
12.25"	0' - 1,150'	9.625"	40#	J-55	LTC	1.125	1.25	1.6
8.75"	0' - 9,960'	7.625"	29.7#	HCP-110	FXL	1.125	1.25	1.6
6.75"	0' - 9,460'	5.5"	20#	P-110EC	DWC/C-IS MS	1.125	1.25	1.6
6.75"	9,460' - 9,960'	5.5"	20#	P-110EC	VAM SFC	1.125	1.25	1.6
6.75"	9,960' - 18,716'	5.5"	20#	P-110EC	DWC/C-IS MS	1.125	1.25	1.6

Variance is requested to waive the centralizer requirements for the 7-5/8" casing in the 8-3/4" hole size. An expansion additive will be utilized, in the cement slurry, for the entire length of the 8-3/4" hole interval to maximize cement bond and zonal isolation.

Variance is also requested to waive any centralizer requirements for the 5-1/2" casing in the 6-3/4" hole size. An expansion additive will be utilized, in the cement slurry, for the entire length of the 6-3/4" hole interval to maximize cement bond and zonal isolation.

Variance is also requested to waive the annular clearance requirements for the 5-1/2" casing by 7-5/8" casing annulus to the proposed top of cement.

EOG requests permission to allow deviation from the 0.422" annulus clearance requirement from Onshore Order #2 under the following conditions:

- Annular clearance to meet or exceed 0.422" between intermediate casing ID and production casing coupling only on the first 500' overlap between both casing strings.
- Annular clearance less than 0.422" is acceptable for the production open hole section.

**Cementing Program:**

Depth	No. Sacks	Wt. ppg	Yld Ft3/sk	Slurry Description
1,150' 9-5/8"	320	13.5	1.73	Lead: Class C + 4.0% Bentonite Gel + 0.5% CaCl <sub>2</sub> + 0.25 lb/sk Cello-Flake (TOC @ Surface)
	80	14.8	1.34	Tail: Class C + 0.6% FL-62 + 0.25 lb/sk Cello-Flake + 0.2% Sodium Metasilicate (TOC @ 948')
9,960' 7-5/8"	500	14.2	1.11	1st Stage (Tail): Class C + 0.6% Halad-9 + 0.45% HR-601 + 3% Microbond (TOC @ 5,680')
	1000	14.8	1.5	2nd Stage (Bradenhead squeeze): Class C + 3% Salt + 1% PreMag-M + 6% Bentonite Gel (TOC @ surface)
18,716' 5-1/2"	800	14.2	1.31	Lead: Class H + 0.4% Halad-344 + 0.35% HR-601 + 3% Microbond (TOC @ 9,464')

**Dire Wolf 12 Fed 708H**

<b>Additive</b>	<b>Purpose</b>
Bentonite Gel	Lightweight/Lost circulation prevention
Calcium Chloride	Accelerator
Cello-flake	Lost circulation prevention
Sodium Metasilicate	Accelerator
MagOx	Expansive agent
Pre-Mag-M	Expansive agent
Sodium Chloride	Accelerator
FL-62	Fluid loss control
Halad-344	Fluid loss control
Halad-9	Fluid loss control
HR-601	Retarder
Microbond	Expansive Agent

EOG requests variance from minimum standards to pump a two stage cement job on the 7-5/8" intermediate casing string with the first stage being pumped conventionally with the calculated top of cement at the Brushy Canyon (5,880') and the second stage performed as a bradenhead squeeze with planned cement from the Brushy Canyon to surface. If necessary, a top out consisting of 962 sacks of Class C cement + 3% Salt + 1% PreMag-M + 6% Bentonite Gel (2.30 yld, 12.91 ppg) will be executed as a contingency. Top will be verified by Echo-meter.

EOG will include the Echo-meter verified fluid top and the volume of displacement fluid above the cement slurry in the annulus in all post-drill sundries on wells utilizing this cement program.

EOG will report to the BLM the volume of fluid (limited to 5 bbls) used to flush intermediate casing valves following backside cementing procedures.

**Mud Program:**

<b>Depth</b>	<b>Type</b>	<b>Weight (ppg)</b>	<b>Viscosity</b>	<b>Water Loss</b>
0 – 1,150'	Fresh - Gel	8.6-8.8	28-34	N/c
1,150' – 9,960'	Brine	10.0-10.2	28-34	N/c
9,960' – 10,835'	Oil Base	8.7-9.4	58-68	N/c - 6
10,835' – 18,716'	Oil Base	10.0-14.0	58-68	4 - 6



## Dire Wolf 12 Fed 708H

### Wellhead:

EOG Resources Inc. (EOG) respectfully requests a variance from the minimum standards for well control equipment testing of Onshore Order No. 2 (item III.A.2.i) to allow a testing schedule of the blow out preventer (BOP) and blow out prevention equipment (BOPE) to include the following:

- Full BOPE test at first installation on the pad.
- Full BOPE test every 30 days per Onshore Order No. 2.
- Function test BOP elements per Onshore Order No. 2.
- Break testing BOP and BOPE coupled with batch drilling operations and production sections that do not penetrate the Wolfcamp or deeper formations.
- After the well section is cemented the BOP will be disconnected from the wellhead and walked with the rig to another well on the pad. The cemented well will be secured with a blind flange and a pressure gauge for monitoring.



## Dire Wolf 12 Fed 708H

1581' FSL  
2588' FEL  
Section 12  
T-26-S, R-30-E

Revised Wellbore

KB: 3221'  
GL: 3196'

API: 30-015-47618

Bit Size: 12-1/4"  
9-5/8", 40#, J-55, LTC, 0' - 1,150'

Bit Size: 8-3/4"  
7-5/8", 29.7#, HCP-110, FXL, 0' - 9,960'

Bit Size: 6-3/4"  
5-1/2", 20#, P-110EC, DWC/C-IS MS, @ 0' - 9,460'  
5-1/2", 20#, P-110EC, VAM SFC, @ 9,460' - 9,960'  
5-1/2", 20#, P-110EC, DWC/C-IS MS, @ 9,960' - 18,716'

TOC: 9,464'

Lateral: 18,716' MD, 11,163' TVD  
Upper Most Perf:  
2333' FSL & 2310' FWL Sec. 12  
Lower Most Perf:  
330' FSL & 2310' FWL Sec. 13  
BH Location: 330' FSL & 2310' FWL  
Sec. 13  
T-26-S R-30-E

KOP: 10,835'



## Dire Wolf 12 Fed 708H

## Design B

## 4. CONTINGENCY CASING PROGRAM

Hole Size	Interval	Csg OD	Weight	Grade	Conn	DFmin Collapse	DFmin Burst	DFmin Tension
16"	0' - 1,148'	13.375"	54.5#	J-55	STC	1.125	1.25	1.6
12.25"	0' - 3,780'	9.625"	40#	J-55	LTC	1.125	1.25	1.6
8.75"	0' - 9,964'	7.625"	29.7#	HCP-110	FXL	1.125	1.25	1.6
6.75"	0' - 9,464'	5.5"	20#	P-110EC	FXL	1.125	1.25	1.6
6.75"	9,464' - 9,964'	5.5"	20#	P-110EC	DWC/C-IS MS	1.125	1.25	1.6
6.75"	9,964' - 18,716'	5.5"	20#	P-110EC	VAM SFC	1.125	1.25	1.6

## Cementing Program:

Depth	No. Sacks	Wt. ppg	Yld Ft3/sk	Slurry Description
1,148'	350	13.5	1.73	Lead: Class C + 4.0% Bentonite Gel + 0.5% CaCl <sub>2</sub> + 0.25 lb/sk Cello-Flake (TOC @ Surface)
13-3/8"	100	14.8	1.34	Tail: Class C + 0.6% FL-62 + 0.25 lb/sk Cello-Flake + 0.2% Sodium Metasilicate (TOC @ 948')
3,774'	560	12.7	2.22	Lead: Class C + 10% NaCl + 6% Bentonite Gel + 3% MagOx (TOC @ Surface)
9-5/8"	240	10.8	1.32	Tail: Class C + 10% NaCl + 3% MagOx (TOC @ 3,019')
9,964'	200	14.8	3.67	Lead: Class H + 0.4% Halad-344 + 0.35% HR-601 + 3% Microbond (TOC @ 3,274')
7-5/8"	100	14.8	2.38	Tail: Class H + 0.6% Halad-9 + 0.45% HR-601 + 3% Microbond (TOC @ 8,464')
18,716'	800	14.8	1.31	Class H + 0.4% Halad-344 + 0.35% HR-601 + 3% Microbond (TOC @ 9,464')
5-1/2"				

As a contingency, EOG requests to pump a two stage cement job on the 7-5/8" intermediate casing string with the first stage being pumped conventionally with the calculated top of cement at the Brushy Canyon (5,880') and the second stage performed as a bradenhead squeeze with planned cement from the Brushy Canyon to surface. If necessary, a top out consisting of 1,000 sacks of Class C cement + 3% Salt + 1% PreMag-M + 6% Bentonite Gel (2.30 yld, 12.91 ppg) will be executed.

## Mud Program:

Depth	Type	Weight (ppg)	Viscosity	Water Loss
0 - 1,148'	Fresh - Gel	8.6-8.8	28-34	N/c
1,148' - 3,774'	Brine	10.0-10.2	28-34	N/c
3,774' - 9,964'	Oil Base	8.7-9.4	58-68	N/c - 6
9,964' - 18,716' Lateral	Oil Base	10.0-14.0	58-68	4 - 6





## Dire Wolf 12 Fed 708H

### Wellhead:

EOG Resources Inc. (EOG) respectfully requests a variance from the minimum standards for well control equipment testing of Onshore Order No. 2 (item III.A.2.i) to allow a testing schedule of the blow out preventer (BOP) and blow out prevention equipment (BOPE) to include the following:

- Full BOPE test at first installation on the pad.
- Full BOPE test every 30 days per Onshore Order No. 2.
- Function test BOP elements per Onshore Order No. 2.
- Break testing BOP and BOPE coupled with batch drilling operations and production sections that do not penetrate the Wolfcamp or deeper formations.
- After the well section is cemented the BOP will be disconnected from the wellhead and walked with the rig to another well on the pad. The cemented well will be secured with a blind flange and a pressure gauge for monitoring.



## Dire Wolf 12 Fed 708H

1581' FSL  
2588' FEL  
Section 12  
T-26-S, R-30-E

Proposed Wellbore

KB: 3221'  
GL: 3196'

API: 30-015-47618

**Bit Size: 16"**  
13-3/8", 54.5#, J-55, STC, 0' - 1,148'

**Bit Size: 12-1/4"**  
9-5/8" 40#, J-55, LTC, 0' - 3,780'

**Bit Size: 8-3/4"**  
7-5/8" 29.7#, HCP-110, FXL, 0' - 9,964'

**Bit Size: 6-3/4"**  
5-1/2", 20#, P-110EC, DWC/C-IS MS, @ 0' - 9,464'  
5-1/2", 20#, P-110EC, VAM SFC, @ 9,464' - 9,964'  
5-1/2", 20#, P-110EC, DWC/C-IS MS, @ 9,964' - 18,716'

TOC: 9,464'

Lateral: 18,716' MD, 11,163' TVD  
Upper Most Perf:  
2333' FSL & 2310' FWL Sec. 12  
Lower Most Perf:  
330' FSL & 2310' FWL Sec. 13  
BH Location: 330' FSL & 2310' FWL  
Sec. 13  
T-26-S R-30-E

KOP: 10,835'

**District I**

1625 N. French Dr., Hobbs, NM 88240  
Phone:(575) 393-6161 Fax:(575) 393-0720

**District II**

811 S. First St., Artesia, NM 88210  
Phone:(575) 748-1283 Fax:(575) 748-9720

**District III**

1000 Rio Brazos Rd., Aztec, NM 87410  
Phone:(505) 334-6178 Fax:(505) 334-6170

**District IV**

1220 S. St Francis Dr., Santa Fe, NM 87505  
Phone:(505) 476-3470 Fax:(505) 476-3462

**State of New Mexico**  
**Energy, Minerals and Natural Resources**  
**Oil Conservation Division**  
**1220 S. St Francis Dr.**  
**Santa Fe, NM 87505**

COMMENTS

Action 59973

**COMMENTS**

Operator: EOG RESOURCES INC P.O. Box 2267 Midland, TX 79702	OGRID: 7377
	Action Number: 59973
	Action Type: [C-103] NOI Change of Plans (C-103A)

**COMMENTS**

Created By	Comment	Comment Date
kpickford	KP GEO Review 11/12/2021	11/12/2021
jagarcia	Approved, John Garcia, Petroleum Engineer	11/15/2021

**District I**

1625 N. French Dr., Hobbs, NM 88240  
Phone:(575) 393-6161 Fax:(575) 393-0720

**District II**

811 S. First St., Artesia, NM 88210  
Phone:(575) 748-1283 Fax:(575) 748-9720

**District III**

1000 Rio Brazos Rd., Aztec, NM 87410  
Phone:(505) 334-6178 Fax:(505) 334-6170

**District IV**

1220 S. St Francis Dr., Santa Fe, NM 87505  
Phone:(505) 476-3470 Fax:(505) 476-3462

**State of New Mexico**  
**Energy, Minerals and Natural Resources**  
**Oil Conservation Division**  
**1220 S. St Francis Dr.**  
**Santa Fe, NM 87505**

CONDITIONS

Action 59973

**CONDITIONS**

Operator: EOG RESOURCES INC P.O. Box 2267 Midland, TX 79702	OGRID: 7377
	Action Number: 59973
	Action Type: [C-103] NOI Change of Plans (C-103A)

**CONDITIONS**

Created By	Condition	Condition Date
kpickford	Adhere to previous NMOCD Conditions of Approval.	11/12/2021