

District I  
1625 N. French Dr., Hobbs, NM 88240  
District II  
811 S. First St., Artesia, NM 88210  
District III  
1000 Rio Brazos Rd., Aztec, NM 87410  
District IV  
1220 S. St. Francis Dr., Santa Fe, NM 87505

State of New Mexico  
Energy, Minerals & Natural  
Resources

Form C-104  
Revised August 1, 2011

Submit one copy to appropriate District Office

Oil Conservation Division  
1220 South St. Francis Dr.

AMENDED REPORT

**I. REQUEST FOR ALLOWABLE MINERAL AUTHORIZATION TO TRANSPORT**

<sup>1</sup> Operator name and Address EOG RESOURCES INC PO BOX 2267 MIDLAND, TEXAS 79702		<sup>2</sup> OGRID Number 7377
		<sup>3</sup> Reason for Filing Code/ Effective Date NW 8/26/2021
<sup>4</sup> API Number 30 - 025-47878	<sup>5</sup> Pool Name RED HILLS; BONE SPRING, NORTH	<sup>6</sup> Pool Code 96434
<sup>7</sup> Property Code 329751	<sup>8</sup> Property Name JUPITER 19 FEDERAL COM	<sup>9</sup> Well Number 510H

**II. <sup>10</sup> Surface Location**

UI or lot no.	Section	Township	Range	Lot Idn	Feet from the	North/South Line	Feet from the	East/West line	County
A	19	24S	34E		566'	NORTH	1096'	EAST	LEA

**<sup>11</sup> Bottom Hole Location**

UL or lot no.	Section	Township	Range	Lot Idn	Feet from the	North/South line	Feet from the	East/West line	County
H	30	24S	34E		2530'	NORTH	316'	EAST	LEA
<sup>12</sup> Lse Code	<sup>13</sup> Producing Method Code FLOWING	<sup>14</sup> Gas Connection Date	<sup>15</sup> C-129 Permit Number	<sup>16</sup> C-129 Effective Date	<sup>17</sup> C-129 Expiration Date				

**III. Oil and Gas Transporters**

<sup>18</sup> Transporter OGRID	<sup>19</sup> Transporter Name and Address	<sup>20</sup> O/G/W
372812	EOGRM	OIL
151618	ENTERPRISE FIELD SERVICES	GAS
298751	REGENCY FIELD SERVICES	GAS
36785	DCP MIDSTREAM	GAS

**IV. Well Completion Data**

<sup>21</sup> Spud Date	<sup>22</sup> Ready Date	<sup>23</sup> TD	<sup>24</sup> PBTD	<sup>25</sup> Perforations	<sup>26</sup> DHC, MC
02/21/2021	08/26/2021	18,505'	18,476'	11,122 - 18,476'	
<sup>27</sup> Hole Size	<sup>28</sup> Casing & Tubing Size	<sup>29</sup> Depth Set	<sup>30</sup> Sacks Cement		
16"	13 3/8"	1420'	1390 SXS CL C/CIRC		
12 1/4"	9 5/8"	5130'	1555 SXS CL C/CIRC		
8 1/2"	5 1/2"	18,484'	2685 SXS CL C TOC 5160' CBL		

**V. Well Test Data**

<sup>31</sup> Date New Oil	<sup>32</sup> Gas Delivery Date	<sup>33</sup> Test Date	<sup>34</sup> Test Length	<sup>35</sup> Tbg. Pressure	<sup>36</sup> Csg. Pressure
08/26/2021	08/26/2021	09/01/2021	24 HRS		988
<sup>37</sup> Choke Size	<sup>38</sup> Oil	<sup>39</sup> Water	<sup>40</sup> Gas	<sup>41</sup> Test Method	
66	4165	10321	4888		

<sup>42</sup> I hereby certify that the rules of the Oil Conservation Division have been complied with and that the information given above is true and complete to the best of my knowledge and belief. Signature: Kay Maddox Printed name: Kay Maddox Title: SENIOR REGULATORY SPECIALIST E-mail Address: kay_maddox@eogresources.com Date: 09/08/2021 Phone: 432-638-8475	OIL CONSERVATION DIVISION
	Approved by: <i>PATRICIA MARTINEZ</i>
	Title: <i>NMOCD</i>
	Approval Date: <i>11/16/2021</i>

District I  
1625 N. French Dr., Hobbs, NM 88240  
Phone: (575) 393-6161 Fax: (575) 393-0720  
District II  
811 S. First St., Artesia, NM 88210  
Phone: (575) 748-1283 Fax: (575) 748-9720  
District III  
1000 Rio Brazos Road, Aztec, NM 87410  
Phone: (505) 334-6178 Fax: (505) 334-6170  
District IV  
1220 S. St. Francis Dr., Santa Fe, NM 87505  
Phone: (505) 476-3460 Fax: (505) 476-3462

State of New Mexico  
Energy, Minerals & Natural Resources  
Department  
OIL CONSERVATION DIVISION  
1220 South St. Francis Dr.  
Santa Fe, NM 87505

FORM C-102  
Revised August 1, 2011  
Submit one copy to appropriate  
District Office  
 AMENDED REPORT

WELL LOCATION AND ACREAGE DEDICATION PLAT

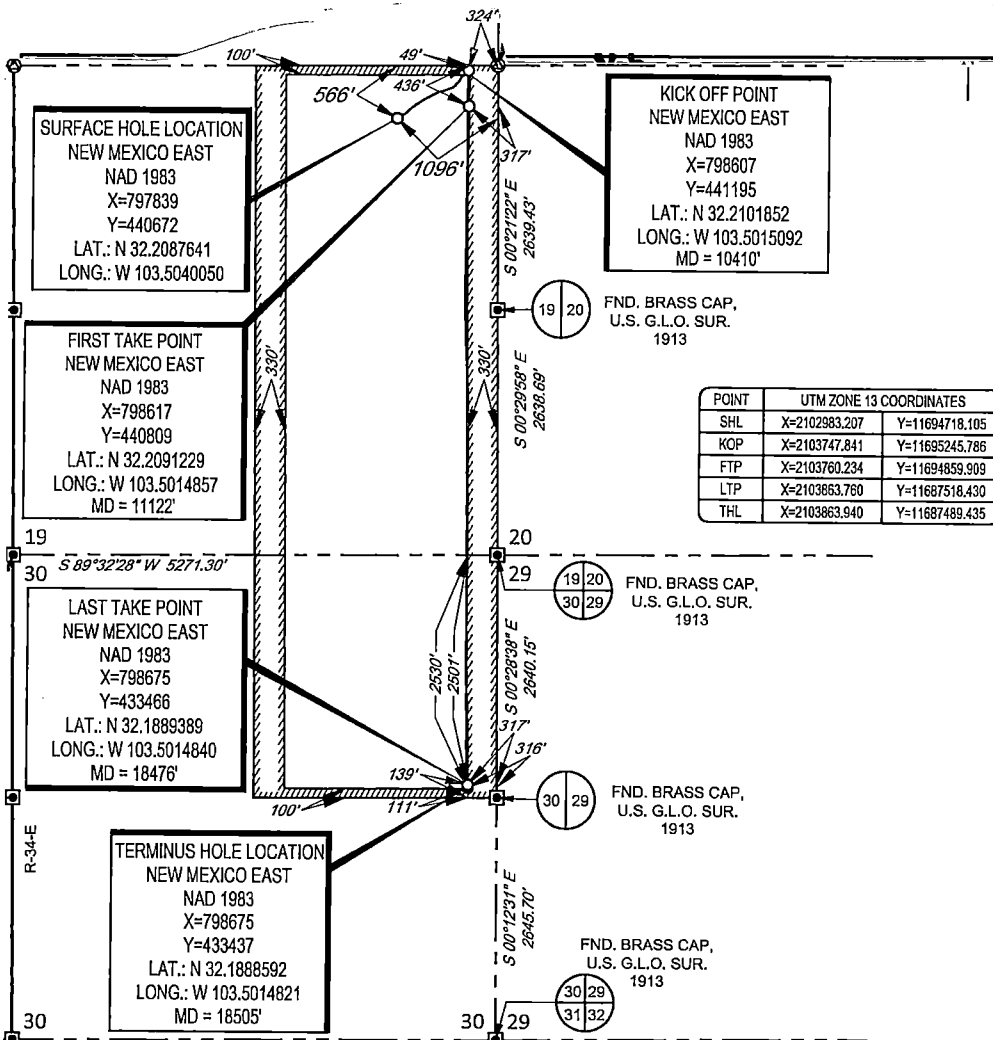
<sup>1</sup> API Number 30-025-47878	<sup>2</sup> Pool Code 96434	<sup>3</sup> Pool Name RED HILLS; BONE SPRING, NORTH
<sup>4</sup> Property Code 329751	<sup>5</sup> Property Name JUPITER 19 FED COM	
<sup>7</sup> OGRID No. 7377	<sup>8</sup> Operator Name EOG RESOURCES, INC.	<sup>6</sup> Well Number 510H
		<sup>9</sup> Elevation 3550'

<sup>10</sup> Surface Location									
UL or lot no. A	Section 19	Township 24-S	Range 34-E	Lot Idn -	Feet from the 566'	North/South line NORTH	Feet from the 1096'	East/West line EAST	County LEA

<sup>11</sup> Bottom Hole Location If Different From Surface									
UL or lot no. H	Section 30	Township 24-S	Range 34-E	Lot Idn -	Feet from the 2530'	North/South line NORTH	Feet from the 316'	East/West line EAST	County LEA

<sup>12</sup> Dedicated Acres 480.00	<sup>13</sup> Joint or Infill	<sup>14</sup> Consolidation Code	<sup>15</sup> Order No.
---	-------------------------------	----------------------------------	-------------------------

No allowable will be assigned to this completion until all interests have been consolidated or a non-standard unit has been approved by the division.



<sup>17</sup>OPERATOR CERTIFICATION

I hereby certify that the information contained herein is true and complete to the best of my knowledge and belief, and that this organization either owns a working interest or unleased mineral interest in the land including the proposed bottom hole location or has a right to drill this well at this location pursuant to a contract with an owner of such a mineral or working interest, or to a voluntary pooling agreement or a compulsory pooling order heretofore entered by the division.

Signature: *Kay Maddox* Date: 09/07/2021

Printed Name: KAY MADDOX

E-mail Address: kay\_maddox@eogresources.com

---

<sup>18</sup>SURVEYOR CERTIFICATION

I hereby certify that the well location shown on this plat was plotted from field notes of actual surveys made by me or under my supervision, and that the same is true to the best of my belief.

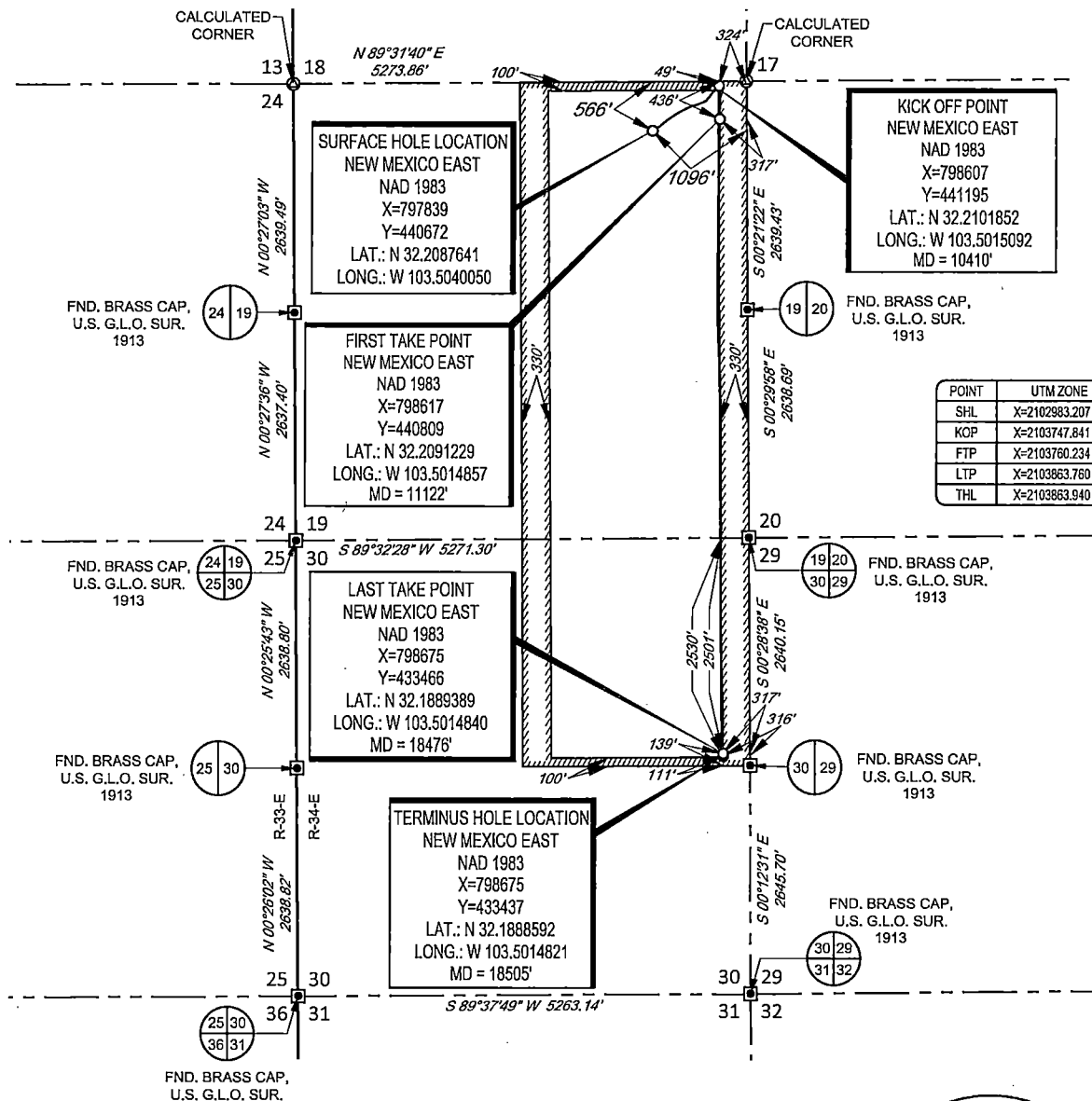
Date of Survey: 03/25/2019

Signature and Seal: *Ramon A. Dominguez*

Certificate Number: 24508

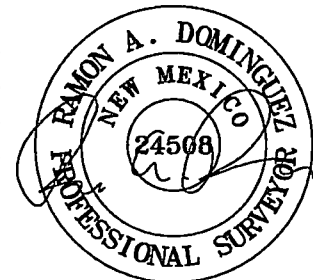
SECTION 19, TOWNSHIP 24-S, RANGE 34-E, N.M.P.M.  
LEA COUNTY, NEW MEXICO

SCALE: 1" = 2000'  
0' 1000' 2000'



POINT	UTM ZONE 13 COORDINATES	
SHL	X=2102983.207	Y=11694718.105
KOP	X=2103747.841	Y=11695245.786
FTP	X=2103760.234	Y=11694859.909
LTP	X=2103863.760	Y=11687518.430
THL	X=2103863.940	Y=11687489.435

LEASE NAME & WELL NO.: JUPITER 19 FED COM 510H  
 SECTION 19 TWP 24-S RGE 34-E SURVEY N.M.P.M.  
 COUNTY LEA STATE NM ELEVATION 3550'  
 DESCRIPTION 566' FNL & 1096' FEL



**TOPOGRAPHIC**  
LOYALTY INNOVATION LEGACY  
1400 EVERMAN PARKWAY, Ste. 146 • FT. WORTH, TEXAS 76140  
TELEPHONE: (817) 744-7512 • FAX (817) 744-7554  
2903 NORTH BIG SPRING • MIDLAND, TEXAS 79705  
TELEPHONE: (432) 682-1653 OR (800) 767-1653 • FAX (432) 682-1743  
WWW.TOPOGRAPHIC.COM

Ramon A. Dominguez, P.S. No. 24508  
July 15, 2021



JUPITER 19 FED COM 510H AS-COMPLETE  DATE: 07/15/2021 FILE: AD_JUPITER_19_FED_COM_510H DRAWN BY: IMU SHEET: 1 OF 1	REVISION:	NOTES: 1. ORIGINAL DOCUMENT SIZE: 8.5" X 11" 2. ALL BEARINGS, DISTANCES, AND COORDINATE VALUES CONTAINED HEREIN ARE GRID BASED UPON THE NEW MEXICO COORDINATE SYSTEM OF 1983, EAST ZONE, U.S. SURVEY FEET. 3. THIS WELL LOCATION SHOWN HEREON HAS BEEN SURVEYED ON THE GROUND UNDER MY SUPERVISION AND PREPARED ACCORDING TO THE EVIDENCE FOUND AT THE TIME OF SURVEY, AND DATA PROVIDED BY EOG RESOURCES, INC. THIS CERTIFICATION IS MADE AND LIMITED TO THOSE PERSONS OR ENTITIES SHOWN ON THE FACE OF THIS PLAT AND IS NON-TRANSFERABLE. THIS SURVEY IS CERTIFIED FOR THIS TRANSACTION ONLY. 4. ADJOINER INFORMATION SHOWN FOR INFORMATIONAL PURPOSES ONLY.





# Lea County, NM (NAD 83 NME)

## Jupiter 19 Fed Com #510H

### Plan #1

#### PROJECT DETAILS: Lea County, NM (NAD 83 NME)

Geodetic System: US State Plane 1983  
 Datum: North American Datum 1983  
 Ellipsoid: GRS 1980  
 Zone: New Mexico Eastern Zone  
 System Datum: Mean Sea Level

#### WELL DETAILS: #510H

KB = 26' @ 3576.0usft  
 Northing 440672.00 Easting 797839.00 Latitude 32° 12' 31.551 N Longitude 103° 30' 14.419 W



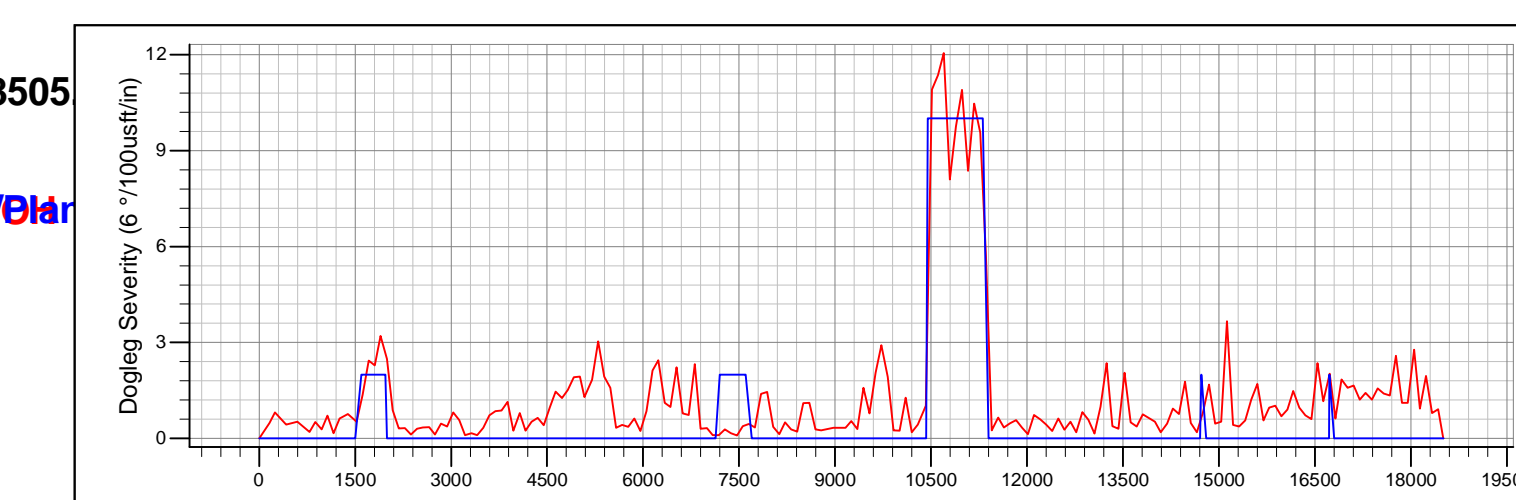
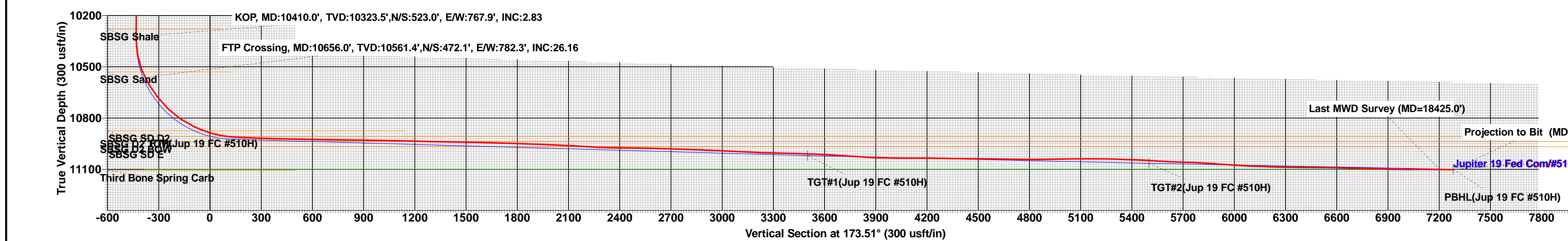
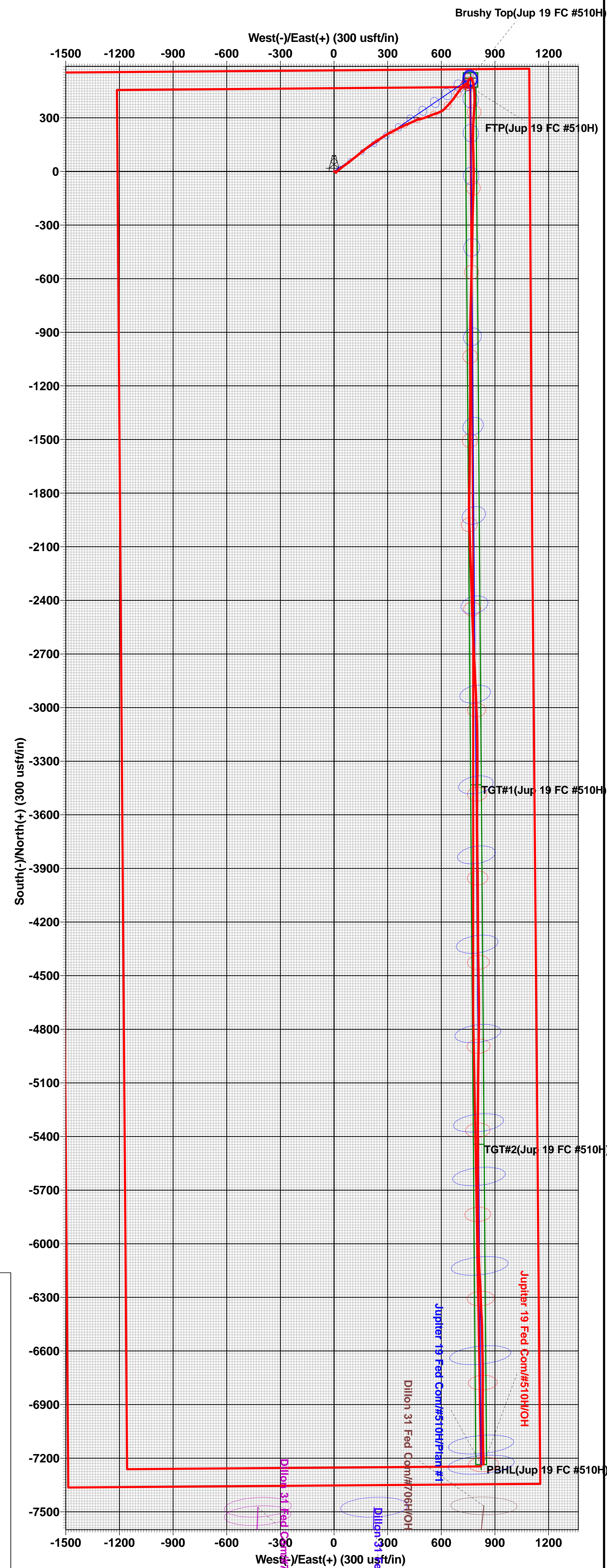
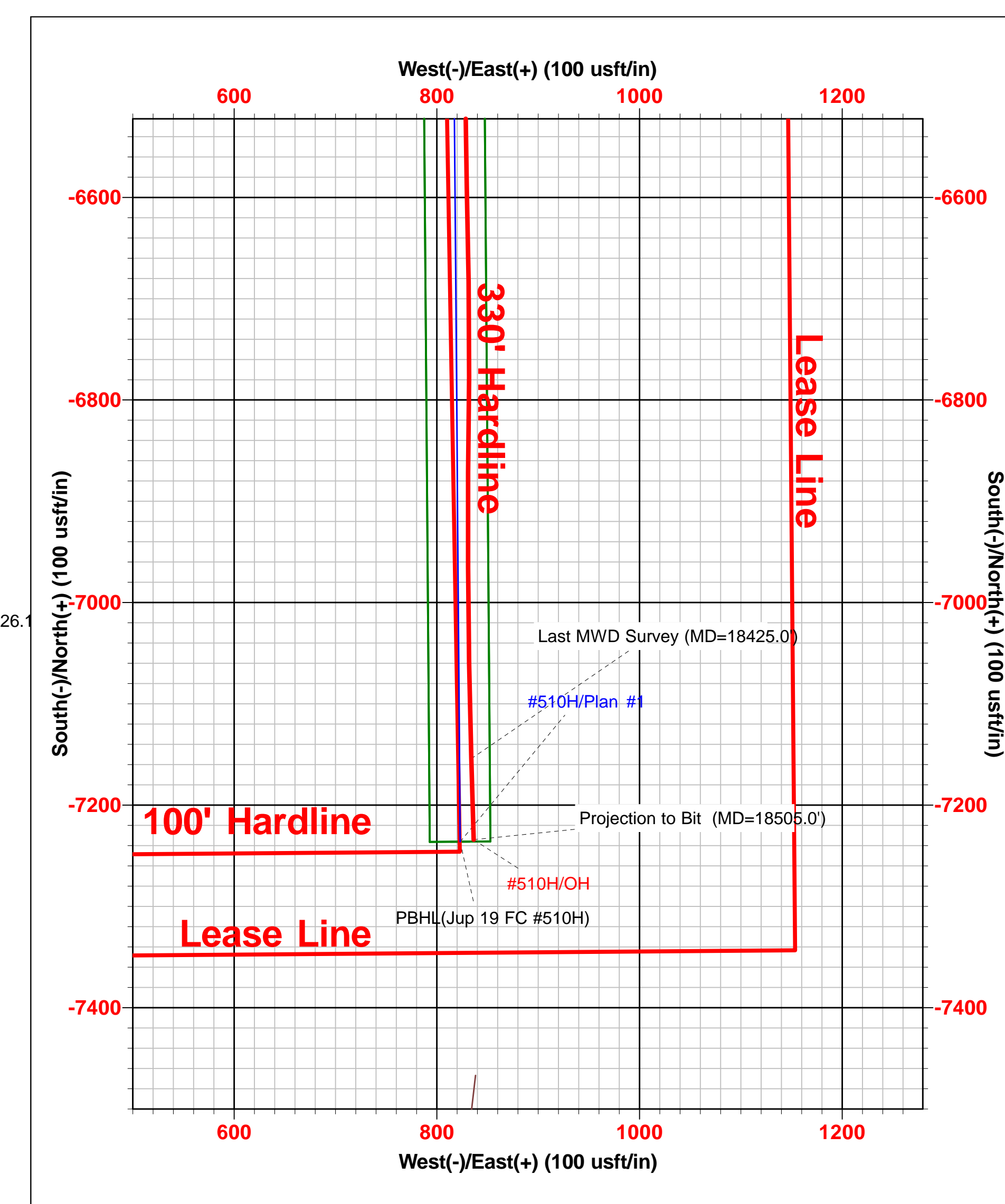
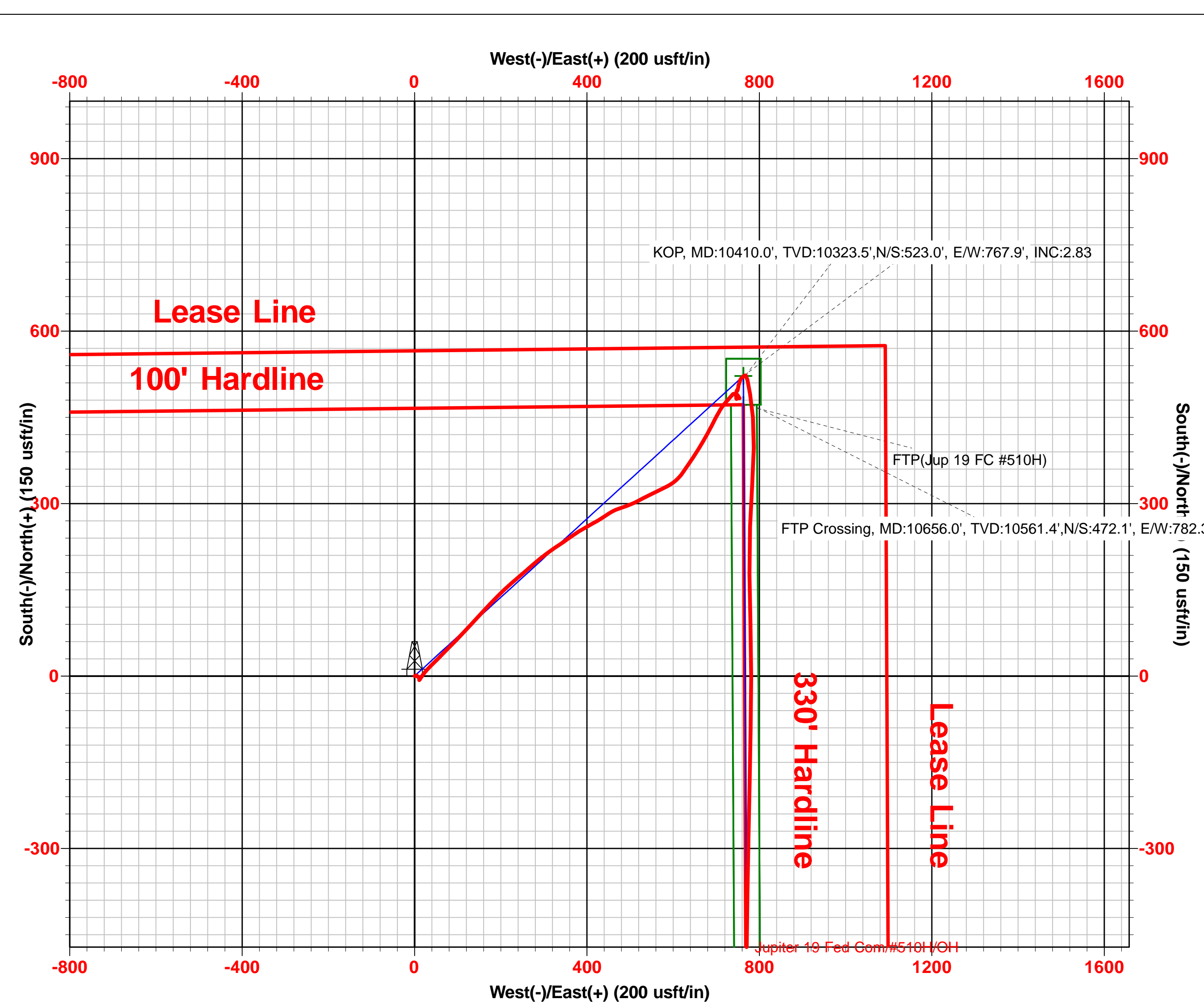
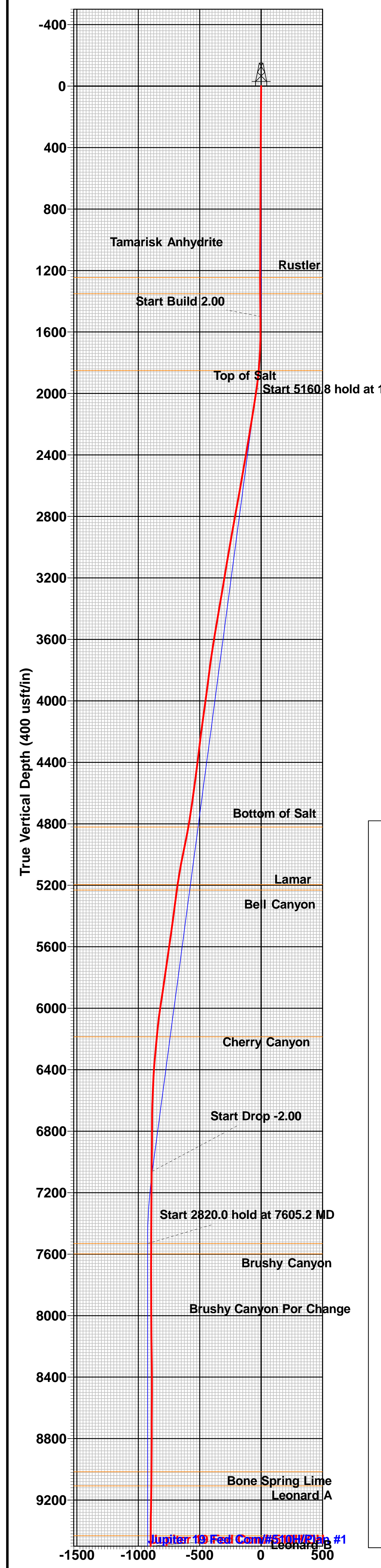
To convert a Magnetic Direction to a Grid Direction, Add 6.09°  
 To convert a Magnetic Direction to a True Direction, Add 6.53° East  
 To convert a True Direction to a Grid Direction, Subtract 0.44°

#### SECTION DETAILS

Sec	MD	Inc	Azi	TVD	+N/-S	+E/-W	Dleg	TFace	VSect	Target
1	0.0	0.00	0.00	0.0	0.0	0.0	0.00	0.00	0.0	
2	1500.0	0.00	0.00	1500.0	0.0	0.0	0.00	0.00	0.0	
3	1972.2	9.44	55.62	1970.1	21.9	32.0	2.00	55.62	-18.2	
4	7133.0	9.44	55.62	7060.9	500.1	731.0	0.00	0.00	-414.3	
5	7605.2	0.00	0.00	7531.0	522.0	763.0	2.00	180.00	-432.4	Brushy Top(Jup 19 FC #510H)
6	10425.2	0.00	0.00	10351.0	522.0	763.0	0.00	0.00	-432.4	
7	11309.0	88.38	179.56	10923.7	-34.7	767.3	10.00	179.56	121.2	
8	14708.0	88.38	179.56	11020.0	-3432.3	793.6	0.00	0.00	3500.0	TGT#1(Jup 19 FC #510H)
9	14725.2	88.72	179.56	11020.0	-3449.4	793.7	2.00	0.00	3517.0	
10	16719.7	88.72	179.56	11065.0	-5443.4	809.1	0.00	0.00	5500.0	TGT#2(Jup 19 FC #510H)
11	16727.8	88.88	179.56	11065.2	-5451.5	809.2	2.00	0.00	5508.0	
12	18512.7	88.88	179.56	11100.0	-7236.0	823.0	0.00	0.00	7282.7	PBHL(Jup 19 FC #510H)

#### WELLBORE TARGET DETAILS (MAP CO-ORDINATES)

Name	TVD	+N/-S	+E/-W	Northing	Easting
Brushy Top(Jup 19 FC #510H)	7531.0	522.0	763.0	441194.00	798602.00
FTP(Jup 19 FC #510H)	10920.0	472.0	763.0	441144.00	798602.00
TGT#1(Jup 19 FC #510H)	11020.0	-3432.3	793.6	437239.70	798632.58
TGT#2(Jup 19 FC #510H)	11065.0	-5443.4	809.1	435228.60	798648.14
PBHL(Jup 19 FC #510H)	11100.0	-7236.0	823.0	433436.00	798662.00







## **EOG Resources - Midland**

Lea County, NM (NAD 83 NME)

Jupiter 19 Fed Com

#510H

OH

Design: OH

## **Midland PVA**

12 April, 2021



## EOG Resources

Midland PVA

<b>Company:</b>	EOG Resources - Midland	<b>Local Co-ordinate Reference:</b>	Well #510H
<b>Project:</b>	Lea County, NM (NAD 83 NME)	<b>TVD Reference:</b>	KB = 26' @ 3576.0usft
<b>Site:</b>	Jupiter 19 Fed Com	<b>MD Reference:</b>	KB = 26' @ 3576.0usft
<b>Well:</b>	#510H	<b>North Reference:</b>	Grid
<b>Wellbore:</b>	OH	<b>Survey Calculation Method:</b>	Minimum Curvature
<b>Design:</b>	OH	<b>Database:</b>	EDM

<b>Project</b>	Lea County, NM (NAD 83 NME)		
<b>Map System:</b>	US State Plane 1983	<b>System Datum:</b>	Mean Sea Level
<b>Geo Datum:</b>	North American Datum 1983		
<b>Map Zone:</b>	New Mexico Eastern Zone		

<b>Site</b>	Jupiter 19 Fed Com		
<b>Site Position:</b>		<b>Northing:</b>	440,554.00 usft
<b>From:</b>	Map	<b>Easting:</b>	794,402.00 usft
<b>Position Uncertainty:</b>	0.0 usft	<b>Slot Radius:</b>	13-3/16 "
		<b>Latitude:</b>	32° 12' 30.644 N
		<b>Longitude:</b>	103° 30' 54.431 W
		<b>Grid Convergence:</b>	0.44 °

<b>Well</b>	#510H					
<b>Well Position</b>	<b>+N/-S</b>	0.0 usft	<b>Northing:</b>	440,672.00 usft	<b>Latitude:</b>	32° 12' 31.551 N
	<b>+E/-W</b>	0.0 usft	<b>Easting:</b>	797,839.00 usft	<b>Longitude:</b>	103° 30' 14.419 W
<b>Position Uncertainty</b>		0.0 usft	<b>Wellhead Elevation:</b>	usft	<b>Ground Level:</b>	3,550.0 usft

<b>Wellbore</b>	OH				
<b>Magnetics</b>	<b>Model Name</b>	<b>Sample Date</b>	<b>Declination (°)</b>	<b>Dip Angle (°)</b>	<b>Field Strength (nT)</b>
	IGRF2020	4/12/2021	6.53	59.90	47,508.95806695

<b>Design</b>	OH				
<b>Audit Notes:</b>					
<b>Version:</b>	1.0	<b>Phase:</b>	ACTUAL	<b>Tie On Depth:</b>	0.0
<b>Vertical Section:</b>	<b>Depth From (TVD) (usft)</b>	<b>+N/-S (usft)</b>	<b>+E/-W (usft)</b>	<b>Direction (°)</b>	
	0.0	0.0	0.0	173.51	

<b>Survey Program</b>	<b>Date</b>	4/12/2021		
<b>From (usft)</b>	<b>To (usft)</b>	<b>Survey (Wellbore)</b>	<b>Tool Name</b>	<b>Description</b>
162.0	18,505.0	Total MWD (OH)	EOG MWD+IFR1	MWD + IFR1



EOG Resources

Midland PVA

Company: EOG Resources - Midland  
 Project: Lea County, NM (NAD 83 NME)  
 Site: Jupiter 19 Fed Com  
 Well: #510H  
 Wellbore: OH  
 Design: OH

Local Co-ordinate Reference: Well #510H  
 TVD Reference: KB = 26' @ 3576.0usft  
 MD Reference: KB = 26' @ 3576.0usft  
 North Reference: Grid  
 Survey Calculation Method: Minimum Curvature  
 Database: EDM

MD (usft)	Inc (°)	Azi (azimuth) (°)	TVD (usft)	N/S (usft)	E/W (usft)	DLeg (°/100usft)	Build (°/100usft)	Turn (°/100usft)	High to Plan (usft)	Right to Plan (usft)
0.0	0.00	0.00	0.0	0.0	0.0	0.00	0.00	0.00	0.0	0.0
162.0	0.79	73.21	162.0	0.3	1.1	0.49	0.49	0.00	-1.1	0.0
249.0	0.09	58.00	249.0	0.5	1.7	0.81	-0.80	-17.48	-1.7	-0.5
424.0	0.84	66.35	424.0	1.1	3.0	0.43	0.43	4.77	-3.2	-0.2
598.0	1.01	125.15	598.0	0.7	5.4	0.53	0.10	33.79	-4.0	3.7
787.0	0.75	143.52	786.9	-1.2	7.5	0.20	-0.14	9.72	-5.4	5.3
881.0	0.44	106.69	880.9	-1.8	8.2	0.51	-0.33	-39.18	-8.4	0.6
975.0	0.18	97.99	974.9	-1.9	8.7	0.28	-0.28	-9.26	-8.9	-0.7
1,070.0	0.84	120.76	1,069.9	-2.3	9.5	0.71	0.69	23.97	-9.3	2.9
1,164.0	0.88	110.74	1,163.9	-2.9	10.7	0.17	0.04	-10.66	-11.1	1.1
1,257.0	1.01	145.54	1,256.9	-3.8	11.9	0.62	0.14	37.42	-9.9	7.6
1,387.0	1.01	204.69	1,386.9	-5.8	12.0	0.77	0.00	45.50	-0.3	13.4
1,524.0	0.53	247.93	1,523.9	-7.2	10.9	0.53	-0.35	31.56	7.3	10.8
1,619.0	0.79	45.08	1,618.9	-6.9	11.0	1.36	0.27	165.42	-0.5	-12.2
1,713.0	3.08	42.71	1,712.8	-4.6	13.2	2.44	2.44	-2.52	2.1	-11.0
1,807.0	5.23	43.06	1,806.6	0.4	17.8	2.29	2.29	0.37	3.6	-9.1
1,901.0	8.18	48.42	1,899.9	8.0	25.7	3.20	3.14	5.70	3.2	-7.6
1,996.0	10.42	53.08	1,993.7	17.7	37.7	2.49	2.36	4.91	2.0	-6.6
2,090.0	11.25	53.35	2,086.0	28.2	51.8	0.88	0.88	0.29	-0.4	-6.0
2,184.0	11.52	52.73	2,178.1	39.4	66.6	0.32	0.29	-0.66	-3.5	-5.3
2,278.0	11.82	52.55	2,270.2	50.9	81.8	0.32	0.32	-0.19	-7.1	-4.5
2,372.0	11.91	52.20	2,362.2	62.7	97.1	0.12	0.10	-0.37	-11.1	-3.7
2,467.0	12.18	51.68	2,455.1	74.9	112.7	0.31	0.28	-0.55	-15.4	-2.8
2,561.0	12.48	51.06	2,546.9	87.5	128.3	0.35	0.32	-0.66	-20.2	-1.9
2,655.0	12.79	50.53	2,638.6	100.5	144.3	0.35	0.33	-0.56	-25.5	-0.8
2,749.0	12.70	50.88	2,730.3	113.6	160.3	0.13	-0.10	0.37	-30.9	0.7
2,843.0	12.44	52.47	2,822.1	126.3	176.4	0.46	-0.28	1.69	-36.0	2.7

EOG Resources

Midland PVA



**Company:** EOG Resources - Midland  
**Project:** Lea County, NM (NAD 83 NME)  
**Site:** Jupiter 19 Fed Com  
**Well:** #510H  
**Wellbore:** OH  
**Design:** OH

**Local Co-ordinate Reference:** Well #510H  
**TVD Reference:** KB = 26' @ 3576.0usft  
**MD Reference:** KB = 26' @ 3576.0usft  
**North Reference:** Grid  
**Survey Calculation Method:** Minimum Curvature  
**Database:** EDM

Survey												
MD (usft)	Inc (°)	Azi (azimuth) (°)	TVD (usft)	N/S (usft)	E/W (usft)	DLeg (°/100usft)	Build (°/100usft)	Turn (°/100usft)	High to Plan (usft)	Right to Plan (usft)		
2,938.0	12.79	52.73	2,914.8	138.9	192.9	0.37	0.37	0.27	-41.3	3.7		
3,032.0	12.26	55.28	3,006.5	150.9	209.3	0.81	-0.56	2.71	-46.1	6.1		
3,127.0	11.82	56.86	3,099.5	162.0	225.8	0.58	-0.46	1.66	-50.3	7.3		
3,221.0	11.87	57.30	3,191.5	172.4	242.0	0.11	0.05	0.47	-54.1	7.3		
3,316.0	11.96	56.68	3,284.4	183.1	258.4	0.16	0.09	-0.65	-58.3	6.3		
3,410.0	12.04	56.95	3,376.4	193.8	274.8	0.10	0.09	0.29	-62.5	6.2		
3,504.0	12.00	58.44	3,468.3	204.3	291.3	0.33	-0.04	1.59	-66.5	7.3		
3,599.0	11.78	61.61	3,561.3	214.1	308.3	0.73	-0.23	3.34	-70.2	9.9		
3,693.0	11.03	63.01	3,653.4	222.7	324.7	0.85	-0.80	1.49	-73.2	9.8		
3,788.0	10.20	63.01	3,746.8	230.6	340.3	0.87	-0.87	0.00	-75.3	7.8		
3,882.0	9.14	61.96	3,839.4	237.9	354.3	1.14	-1.13	-1.12	-75.9	4.6		
3,977.0	9.36	62.49	3,933.2	245.0	367.8	0.25	0.23	0.56	-75.7	3.5		
4,071.0	9.85	65.83	4,025.9	251.9	382.0	0.79	0.52	3.55	-75.8	5.6		
4,165.0	9.85	67.14	4,118.5	258.3	396.7	0.24	0.00	1.39	-76.6	4.4		
4,259.0	9.36	66.62	4,211.2	264.4	411.1	0.53	-0.52	-0.55	-77.2	0.7		
4,354.0	8.75	66.44	4,305.0	270.4	424.8	0.64	-0.64	-0.19	-76.9	-2.5		
4,448.0	8.70	63.89	4,397.9	276.4	437.8	0.41	-0.05	-2.71	-75.6	-8.4		
4,543.0	9.63	64.16	4,491.7	283.0	451.4	0.98	0.98	0.28	-75.4	-10.4		
4,637.0	9.98	71.98	4,584.3	289.0	466.2	1.46	0.37	8.32	-77.2	-3.4		
4,732.0	10.81	76.81	4,677.8	293.5	482.7	1.27	0.87	5.08	-79.8	-1.9		
4,826.0	12.09	73.65	4,769.9	298.3	500.7	1.52	1.36	-3.36	-83.6	-11.5		
4,920.0	13.32	67.67	4,861.6	305.2	520.2	1.91	1.31	-6.36	-87.6	-24.4		
5,015.0	15.12	69.25	4,953.7	313.8	541.9	1.94	1.89	1.66	-96.6	-25.4		
5,084.0	14.24	69.87	5,020.4	319.9	558.3	1.30	-1.28	0.90	-103.5	-27.0		
5,204.0	12.04	69.94	5,137.3	329.2	583.9	1.83	-1.83	0.06	-111.9	-31.6		
5,298.0	9.71	61.15	5,229.6	336.4	600.1	3.04	-2.48	-9.35	-108.1	-51.1		
5,393.0	9.19	50.42	5,323.3	345.1	612.9	1.93	-0.55	-11.29	-96.8	-70.2		



EOG Resources

Midland PVA



Company: EOG Resources - Midland  
 Project: Lea County, NM (NAD 83 NME)  
 Site: Jupiter 19 Fed Com  
 Well: #510H  
 Wellbore: OH  
 Design: OH

Local Co-ordinate Reference: Well #510H  
 TVD Reference: KB = 26' @ 3576.0usft  
 MD Reference: KB = 26' @ 3576.0usft  
 North Reference: Grid  
 Survey Calculation Method: Minimum Curvature  
 Database: EDM

Survey												
MD (usft)	Inc (°)	Azi (azimuth) (°)	TVD (usft)	N/S (usft)	E/W (usft)	DLeg (°/100usft)	Build (°/100usft)	Turn (°/100usft)	High to Plan (usft)	Right to Plan (usft)		
5,487.0	9.85	42.34	5,416.0	355.9	624.1	1.58	0.70	-8.60	-86.7	-80.4		
5,581.0	10.15	42.95	5,508.6	367.9	635.2	0.34	0.32	0.65	-88.8	-76.0		
5,675.0	10.37	41.11	5,601.1	380.3	646.4	0.42	0.23	-1.96	-88.1	-75.2		
5,770.0	10.68	40.23	5,694.5	393.5	657.7	0.37	0.33	-0.93	-89.3	-72.5		
5,864.0	10.99	37.59	5,786.8	407.2	668.8	0.62	0.33	-2.81	-89.0	-72.1		
5,959.0	11.08	36.54	5,880.1	421.7	679.7	0.23	0.09	-1.11	-91.1	-68.8		
6,053.0	11.56	33.29	5,972.2	436.8	690.3	0.85	0.51	-3.46	-91.4	-68.4		
6,147.0	9.63	36.10	6,064.6	451.1	700.1	2.12	-2.05	2.99	-97.3	-58.3		
6,242.0	7.34	38.74	6,158.6	462.2	708.6	2.44	-2.41	2.78	-98.9	-49.0		
6,336.0	6.59	44.80	6,251.9	470.7	716.1	1.12	-0.80	6.45	-99.6	-34.9		
6,431.0	5.89	50.51	6,346.3	477.7	723.7	0.98	-0.74	6.01	-97.3	-23.1		
6,525.0	3.82	47.44	6,440.0	482.9	729.8	2.22	-2.20	-3.27	-88.5	-26.3		
6,619.0	3.12	51.30	6,533.8	486.6	734.1	0.78	-0.74	4.11	-80.3	-19.0		
6,714.0	2.42	51.74	6,628.7	489.5	737.7	0.74	-0.74	0.46	-69.5	-17.4		
6,808.0	0.31	89.89	6,722.7	490.7	739.5	2.32	-2.24	40.59	-54.4	21.7		
6,902.0	0.57	74.42	6,816.7	490.8	740.2	0.30	0.28	-16.46	-44.3	1.3		
6,996.0	0.79	92.35	6,910.7	490.9	741.3	0.32	0.23	19.07	-30.5	5.8		
7,090.0	0.88	89.71	7,004.6	490.9	742.7	0.10	0.10	-2.81	-19.2	-4.2		
7,184.0	0.79	86.81	7,098.6	490.9	744.0	0.11	-0.10	-3.09	-7.4	-13.0		
7,279.0	0.88	104.39	7,193.6	490.8	745.4	0.28	0.09	18.51	-3.9	-19.5		
7,373.0	0.88	114.32	7,287.6	490.3	746.7	0.16	0.00	10.56	-3.7	-26.6		
7,467.0	0.88	120.03	7,381.6	489.7	748.0	0.09	0.00	6.07	-4.9	-31.9		
7,561.0	1.19	130.49	7,475.6	488.7	749.4	0.38	0.33	11.13	-11.4	-33.7		
7,655.0	1.58	137.96	7,569.6	487.1	751.0	0.46	0.41	7.95	-17.9	-32.3		
7,750.0	1.85	143.85	7,664.5	484.9	752.8	0.34	0.28	6.20	-24.0	-30.2		
7,844.0	0.57	159.06	7,758.5	483.2	753.8	1.39	-1.36	16.18	-33.0	-22.4		
7,939.0	0.84	314.18	7,853.5	483.2	753.5	1.45	0.28	163.28	20.2	34.4		

EOG Resources

Midland PVA



Company: EOG Resources - Midland  
 Project: Lea County, NM (NAD 83 NME)  
 Site: Jupiter 19 Fed Com  
 Well: #510H  
 Wellbore: OH  
 Design: OH

Local Co-ordinate Reference: Well #510H  
 TVD Reference: KB = 26' @ 3576.0usft  
 MD Reference: KB = 26' @ 3576.0usft  
 North Reference: Grid  
 Survey Calculation Method: Minimum Curvature  
 Database: EDM

Survey												
MD (usft)	Inc (°)	Azi (azimuth) (°)	TVD (usft)	N/S (usft)	E/W (usft)	DLeg (°/100usft)	Build (°/100usft)	Turn (°/100usft)	High to Plan (usft)	Right to Plan (usft)		
8,033.0	0.57	296.25	7,947.5	483.9	752.6	0.37	-0.29	-19.07	7.5	38.7		
8,127.0	0.53	283.33	8,041.5	484.2	751.8	0.14	-0.04	-13.74	-2.2	39.3		
8,221.0	0.75	244.75	8,135.5	484.1	750.8	0.50	0.23	-41.04	-27.2	29.1		
8,315.0	1.01	239.83	8,229.5	483.4	749.5	0.29	0.28	-5.23	-31.1	26.6		
8,410.0	1.14	231.39	8,324.4	482.4	748.0	0.22	0.14	-8.88	-36.4	21.6		
8,504.0	0.57	296.61	8,418.4	482.0	746.9	1.11	-0.61	69.38	3.5	43.0		
8,598.0	1.19	357.78	8,512.4	483.2	746.4	1.11	0.66	65.07	38.1	18.1		
8,692.0	0.92	359.98	8,606.4	484.9	746.4	0.29	-0.29	2.34	37.1	16.6		
8,786.0	0.75	348.11	8,700.4	486.3	746.3	0.26	-0.18	-12.63	31.5	23.7		
8,881.0	0.57	329.57	8,795.4	487.3	745.9	0.29	-0.19	-19.52	21.3	32.3		
8,975.0	0.57	1.29	8,889.4	488.2	745.7	0.33	0.00	33.74	34.2	16.6		
9,163.0	1.14	18.87	9,077.4	490.9	746.3	0.33	0.30	9.35	34.9	5.7		
9,257.0	1.58	7.97	9,171.3	493.0	746.8	0.54	0.47	-11.60	30.9	12.0		
9,352.0	1.76	15.27	9,266.3	495.7	747.4	0.29	0.19	7.68	29.5	8.2		
9,446.0	0.57	68.44	9,360.3	497.3	748.2	1.58	-1.27	56.56	22.9	-17.5		
9,540.0	0.66	141.30	9,454.3	497.1	748.9	0.78	0.10	77.51	-10.7	-26.6		
9,634.0	1.49	18.26	9,548.3	497.8	749.7	2.05	0.88	-130.89	27.2	5.1		
9,728.0	4.22	12.63	9,642.1	502.3	750.8	2.92	2.90	-5.99	21.9	7.6		
9,822.0	2.51	23.00	9,736.0	507.6	752.4	1.92	-1.82	11.03	17.4	4.2		
9,916.0	2.29	25.02	9,829.9	511.2	754.0	0.25	-0.23	2.15	13.6	3.6		
10,011.0	2.11	21.07	9,924.8	514.5	755.4	0.25	-0.19	-4.16	9.7	4.4		
10,105.0	2.15	53.76	10,018.8	517.2	757.4	1.28	0.04	34.78	7.3	-0.6		
10,199.0	2.24	49.55	10,112.7	519.4	760.3	0.20	0.10	-4.48	3.7	-0.2		
10,293.0	2.15	60.09	10,206.6	521.5	763.2	0.44	-0.10	11.21	0.1	-0.5		
10,410.0	2.83	83.11	10,323.5	523.0	767.9	1.02	0.58	19.67	-5.0	0.4		
<b>KOP, MD:10410.0', TVD:10323.5',N/S:523.0', E/W:767.9', INC:2.83</b>												
10,420.0	2.90	84.53	10,333.5	523.0	768.4	1.02	0.73	14.20	-5.5	0.5		

EOG Resources

Midland PVA



Company: EOG Resources - Midland  
 Project: Lea County, NM (NAD 83 NME)  
 Site: Jupiter 19 Fed Com  
 Well: #510H  
 Wellbore: OH  
 Design: OH

Local Co-ordinate Reference: Well #510H  
 TVD Reference: KB = 26' @ 3576.0usft  
 MD Reference: KB = 26' @ 3576.0usft  
 North Reference: Grid  
 Survey Calculation Method: Minimum Curvature  
 Database: EDM

Survey											
MD (usft)	Inc (°)	Azi (azimuth) (°)	TVD (usft)	N/S (usft)	E/W (usft)	DLeg (°/100usft)	Build (°/100usft)	Turn (°/100usft)	High to Plan (usft)	Right to Plan (usft)	
10,514.0	10.15	168.46	10,427.0	515.1	772.5	10.91	7.71	89.29	-3.7	8.9	
10,608.0	20.79	165.30	10,517.4	490.8	778.4	11.35	11.32	-3.36	-9.7	13.3	
10,656.0	26.16	170.72	10,561.4	472.1	782.3	12.04	11.18	11.30	-11.8	17.4	
<b>FTP Crossing, MD:10656.0', TVD:10561.4', N/S:472.1', E/W:782.3', INC:26.16</b>											
10,702.0	31.43	174.26	10,601.7	450.1	785.1	12.04	11.46	7.69	-14.5	20.5	
10,796.0	37.85	181.47	10,679.1	396.8	786.8	8.09	6.83	7.67	-17.4	23.3	
10,891.0	46.86	184.63	10,749.2	333.0	783.3	9.74	9.48	3.33	-18.7	20.0	
10,985.0	57.01	182.88	10,807.1	259.3	778.5	10.90	10.80	-1.86	-21.0	14.1	
11,079.0	64.18	179.18	10,853.2	177.4	777.1	8.36	7.63	-3.94	-21.3	11.4	
11,173.0	73.93	177.78	10,886.8	89.8	779.5	10.46	10.37	-1.49	-19.1	13.0	
11,268.0	82.68	180.24	10,906.0	-3.1	781.1	9.55	9.21	2.59	-15.9	14.0	
11,358.0	87.65	181.46	10,913.6	-92.8	779.7	5.68	5.52	1.36	-11.7	12.0	
11,453.0	87.87	181.55	10,917.3	-187.7	777.2	0.25	0.23	0.09	-10.7	8.7	
11,547.0	88.48	181.46	10,920.3	-281.6	774.8	0.66	0.65	-0.10	-10.4	5.5	
11,641.0	88.75	181.28	10,922.6	-375.5	772.5	0.35	0.29	-0.19	-10.8	2.6	
11,735.0	88.70	180.84	10,924.7	-469.5	770.8	0.47	-0.05	-0.47	-11.4	0.1	
11,829.0	89.10	181.20	10,926.5	-563.4	769.1	0.57	0.43	0.38	-12.2	-2.3	
11,923.0	89.36	181.37	10,927.8	-657.4	767.0	0.33	0.28	0.18	-13.6	-5.1	
12,017.0	89.45	181.46	10,928.7	-751.4	764.7	0.14	0.10	0.10	-15.3	-8.2	
12,112.0	89.14	180.84	10,929.9	-846.4	762.8	0.73	-0.33	-0.65	-16.8	-10.8	
12,207.0	88.92	180.32	10,931.5	-941.3	761.8	0.59	-0.23	-0.55	-17.9	-12.5	
12,301.0	88.70	179.97	10,933.5	-1,035.3	761.6	0.44	-0.23	-0.37	-18.6	-13.5	
12,395.0	88.57	179.79	10,935.7	-1,129.3	761.8	0.24	-0.14	-0.19	-19.0	-14.0	
12,490.0	88.97	180.23	10,937.7	-1,224.3	761.7	0.63	0.42	0.46	-19.7	-14.8	
12,584.0	88.79	180.05	10,939.6	-1,318.2	761.5	0.27	-0.19	-0.19	-20.5	-15.7	
12,678.0	89.01	180.49	10,941.4	-1,412.2	761.1	0.52	0.23	0.47	-21.4	-16.9	
12,772.0	88.97	180.67	10,943.0	-1,506.2	760.1	0.20	-0.04	0.19	-22.4	-18.6	



EOG Resources

Midland PVA



Company: EOG Resources - Midland  
 Project: Lea County, NM (NAD 83 NME)  
 Site: Jupiter 19 Fed Com  
 Well: #510H  
 Wellbore: OH  
 Design: OH

Local Co-ordinate Reference: Well #510H  
 TVD Reference: KB = 26' @ 3576.0usft  
 MD Reference: KB = 26' @ 3576.0usft  
 North Reference: Grid  
 Survey Calculation Method: Minimum Curvature  
 Database: EDM

Survey												
MD (usft)	Inc (°)	Azi (azimuth) (°)	TVD (usft)	N/S (usft)	E/W (usft)	DLeg (°/100usft)	Build (°/100usft)	Turn (°/100usft)	High to Plan (usft)	Right to Plan (usft)		
12,866.0	88.22	180.49	10,945.3	-1,600.2	759.2	0.82	-0.80	-0.19	-22.7	-20.2		
12,961.0	88.04	181.02	10,948.4	-1,695.1	757.9	0.59	-0.19	0.56	-22.3	-22.2		
13,055.0	88.18	181.02	10,951.5	-1,789.0	756.2	0.15	0.15	0.00	-21.9	-24.6		
13,149.0	87.87	180.14	10,954.8	-1,883.0	755.3	0.99	-0.33	-0.94	-21.3	-26.3		
13,243.0	87.21	178.03	10,958.8	-1,976.9	756.8	2.35	-0.70	-2.24	-19.9	-25.6		
13,337.0	86.86	178.12	10,963.7	-2,070.7	759.9	0.38	-0.37	0.10	-17.7	-23.1		
13,431.0	86.64	177.94	10,969.0	-2,164.5	763.2	0.30	-0.23	-0.19	-15.0	-20.6		
13,526.0	88.57	178.21	10,973.0	-2,259.4	766.4	2.05	2.03	0.28	-13.8	-18.2		
13,620.0	89.01	178.03	10,975.0	-2,353.3	769.4	0.51	0.47	-0.19	-14.4	-15.8		
13,715.0	89.36	177.94	10,976.3	-2,448.2	772.8	0.38	0.37	-0.09	-15.8	-13.2		
13,809.0	88.66	177.86	10,977.9	-2,542.1	776.2	0.75	-0.74	-0.09	-16.8	-10.5		
13,998.0	87.82	177.33	10,983.7	-2,730.9	784.2	0.53	-0.44	-0.28	-16.4	-4.0		
14,092.0	87.78	177.15	10,987.4	-2,824.7	788.7	0.20	-0.04	-0.19	-15.4	-0.2		
14,187.0	87.34	177.15	10,991.4	-2,919.5	793.4	0.46	-0.46	0.00	-14.1	3.8		
14,281.0	87.34	178.03	10,995.8	-3,013.3	797.3	0.94	0.00	0.94	-12.4	7.0		
14,375.0	87.21	178.74	11,000.2	-3,107.2	800.0	0.77	-0.14	0.76	-10.6	8.9		
14,469.0	88.57	179.70	11,003.7	-3,201.1	801.3	1.77	1.45	1.02	-9.8	9.5		
14,563.0	88.44	180.14	11,006.1	-3,295.1	801.4	0.49	-0.14	0.47	-10.0	8.9		
14,657.0	88.44	180.32	11,008.7	-3,389.0	801.0	0.19	0.00	0.19	-10.1	7.8		
14,752.0	87.87	180.84	11,011.8	-3,484.0	800.1	0.81	-0.60	0.55	-9.4	6.1		
14,846.0	86.55	179.97	11,016.3	-3,577.9	799.4	1.68	-1.40	-0.93	-7.0	4.7		
14,940.0	86.20	179.70	11,022.3	-3,671.7	799.7	0.47	-0.37	-0.29	-3.1	4.2		
15,034.0	85.85	179.35	11,028.8	-3,765.4	800.4	0.53	-0.37	-0.37	1.3	4.3		
15,128.0	89.27	179.00	11,032.8	-3,859.3	801.8	3.66	3.64	-0.37	3.2	4.9		
15,222.0	89.45	179.35	11,033.8	-3,953.3	803.2	0.42	0.19	0.37	2.2	5.5		
15,316.0	89.80	179.35	11,034.5	-4,047.3	804.2	0.37	0.37	0.00	0.7	5.9		
15,411.0	89.71	179.88	11,034.9	-4,142.3	804.9	0.57	-0.09	0.56	-1.0	5.8		

EOG Resources  
Midland PVA



Company: EOG Resources - Midland  
 Project: Lea County, NM (NAD 83 NME)  
 Site: Jupiter 19 Fed Com  
 Well: #510H  
 Wellbore: OH  
 Design: OH

Local Co-ordinate Reference: Well #510H  
 TVD Reference: KB = 26' @ 3576.0usft  
 MD Reference: KB = 26' @ 3576.0usft  
 North Reference: Grid  
 Survey Calculation Method: Minimum Curvature  
 Database: EDM

Survey												
MD (usft)	Inc (°)	Azi (azimuth) (°)	TVD (usft)	N/S (usft)	E/W (usft)	DLeg (°/100usft)	Build (°/100usft)	Turn (°/100usft)	High to Plan (usft)	Right to Plan (usft)		
15,505.0	88.57	179.97	11,036.3	-4,236.3	805.0	1.22	-1.21	0.10	-1.7	5.2		
15,600.0	89.98	179.17	11,037.5	-4,331.3	805.7	1.71	1.48	-0.84	-2.7	5.2		
15,694.0	89.45	179.17	11,038.0	-4,425.3	807.1	0.56	-0.56	0.00	-4.3	5.8		
15,788.0	88.62	178.82	11,039.5	-4,519.2	808.7	0.96	-0.88	-0.37	-4.8	6.7		
15,882.0	89.36	179.44	11,041.2	-4,613.2	810.1	1.03	0.79	0.66	-5.3	7.4		
15,975.0	89.58	180.05	11,042.1	-4,706.2	810.5	0.70	0.24	0.66	-6.5	7.1		
16,068.0	90.15	180.67	11,042.3	-4,799.2	810.0	0.91	0.61	0.67	-8.3	5.8		
16,163.0	91.52	181.02	11,040.9	-4,894.2	808.6	1.49	1.44	0.37	-11.8	3.7		
16,257.0	90.68	180.67	11,039.1	-4,988.1	807.2	0.97	-0.89	-0.37	-15.7	1.6		
16,351.0	90.02	180.49	11,038.5	-5,082.1	806.2	0.73	-0.70	-0.19	-18.4	-0.1		
16,446.0	89.45	180.58	11,038.9	-5,177.1	805.3	0.61	-0.60	0.09	-20.1	-1.7		
16,540.0	87.25	180.32	11,041.7	-5,271.1	804.6	2.36	-2.34	-0.28	-19.5	-3.2		
16,634.0	88.31	180.05	11,045.3	-5,365.0	804.3	1.16	1.13	-0.29	-17.9	-4.2		
16,728.0	86.42	179.79	11,049.6	-5,458.9	804.4	2.03	-2.01	-0.28	-15.7	-4.8		
16,823.0	86.95	180.05	11,055.1	-5,553.7	804.6	0.62	0.56	0.27	-12.1	-5.4		
16,917.0	88.66	180.32	11,058.7	-5,647.7	804.3	1.84	1.82	0.29	-10.3	-6.5		
17,011.0	87.21	179.97	11,062.1	-5,741.6	804.0	1.59	-1.54	-0.37	-8.7	-7.4		
17,105.0	85.67	179.79	11,067.9	-5,835.4	804.2	1.65	-1.64	-0.19	-4.7	-8.0		
17,200.0	86.51	179.00	11,074.4	-5,930.2	805.2	1.21	0.88	-0.83	-0.1	-7.7		
17,294.0	86.73	177.68	11,080.0	-6,024.0	807.9	1.42	0.23	-1.40	3.6	-5.7		
17,388.0	87.87	177.68	11,084.4	-6,117.8	811.7	1.21	1.21	0.00	6.2	-2.6		
17,483.0	88.92	176.63	11,087.0	-6,212.7	816.4	1.56	1.11	-1.11	7.0	1.4		
17,577.0	89.10	177.94	11,088.7	-6,306.5	820.9	1.41	0.19	1.39	6.8	5.1		
17,671.0	89.80	176.89	11,089.6	-6,400.4	825.1	1.34	0.74	-1.12	5.9	8.6		
17,765.0	89.27	179.26	11,090.3	-6,494.4	828.3	2.58	-0.56	2.52	4.8	11.0		
17,859.0	88.22	179.26	11,092.4	-6,588.3	829.5	1.12	-1.12	0.00	5.0	11.5		
17,954.0	88.92	178.47	11,094.8	-6,683.3	831.4	1.11	0.74	-0.83	5.5	12.7		

Released to Imaging: 11/16/2021 10:35:00 PM

Received by OCD: 9/8/2021 8:50:21 AM

Page 13 of 19



**EOG Resources**

Midland PVA

<b>Company:</b>	EOG Resources - Midland	<b>Local Co-ordinate Reference:</b>	Well #510H
<b>Project:</b>	Lea County, NM (NAD 83 NME)	<b>TVD Reference:</b>	KB = 26' @ 3576.0usft
<b>Site:</b>	Jupiter 19 Fed Com	<b>MD Reference:</b>	KB = 26' @ 3576.0usft
<b>Well:</b>	#510H	<b>North Reference:</b>	Grid
<b>Wellbore:</b>	OH	<b>Survey Calculation Method:</b>	Minimum Curvature
<b>Design:</b>	OH	<b>Database:</b>	EDM

MD (usft)	Inc (°)	Azi (azimuth) (°)	TVD (usft)	N/S (usft)	E/W (usft)	DLeg (°/100usft)	Build (°/100usft)	Turn (°/100usft)	High to Plan (usft)	Right to Plan (usft)
18,048.0	88.04	180.93	11,097.3	-6,777.2	831.9	2.78	-0.94	2.62	6.2	12.4
18,142.0	88.57	180.23	11,100.0	-6,871.2	830.9	0.93	0.56	-0.74	7.2	10.7
18,236.0	90.33	179.70	11,100.9	-6,965.2	831.0	1.96	1.87	-0.56	6.2	10.1
18,331.0	89.89	179.09	11,100.8	-7,060.2	832.0	0.79	-0.46	-0.64	4.2	10.3
18,425.0	89.41	178.38	11,101.3	-7,154.2	834.1	0.91	-0.51	-0.76	2.9	11.7
<b>Last MWD Survey (MD=18425.0')</b>										
18,505.0	89.41	178.38	11,102.2	-7,234.1	836.3	0.00	0.00	0.00	2.2	13.3
<b>Projection to Bit (MD=18505.0')</b>										

Measured Depth (usft)	Vertical Depth (usft)	Local Coordinates		Comment
		+N/-S (usft)	+E/-W (usft)	
10,410.0	10,323.5	523.0	767.9	KOP, MD:10410.0', TVD:10323.5',N/S:523.0', E/W:767.9', INC:2.83
10,656.0	10,561.4	472.1	782.3	FTP Crossing, MD:10656.0', TVD:10561.4',N/S:472.1', E/W:782.3', INC:26.16
18,425.0	11,101.3	-7,154.2	834.1	Last MWD Survey (MD=18425.0')
18,505.0	11,102.2	-7,234.1	836.3	Projection to Bit (MD=18505.0')

Checked By: \_\_\_\_\_ Approved By: \_\_\_\_\_ Date: \_\_\_\_\_

I CERTIFY THIS SURVEY TO BE TRUE AND CORRECT TO THE BEST OF MY BELIEF AND KNOWLEGE  
 KAY MADDOX 09/08/2021



Intent  As Drilled

API #

Operator Name:	Property Name:	Well Number
----------------	----------------	-------------

Kick Off Point (KOP)

UL	Section	Township	Range	Lot	Feet	From N/S	Feet	From E/W	County
Latitude					Longitude				NAD

First Take Point (FTP)

UL	Section	Township	Range	Lot	Feet	From N/S	Feet	From E/W	County
Latitude					Longitude				NAD

Last Take Point (LTP)

UL	Section	Township	Range	Lot	Feet	From N/S	Feet	From E/W	County
Latitude					Longitude				NAD

Is this well the defining well for the Horizontal Spacing Unit?

Is this well an infill well?

If infill is yes please provide API if available, Operator Name and well number for Defining well for Horizontal Spacing Unit.

API #

Operator Name:	Property Name:	Well Number
----------------	----------------	-------------

KZ 06/29/2018

Submit To Appropriate District Office Two Copies District I 1625 N. French Dr., Hobbs, NM 88240 District II 811 S. First St., Artesia, NM 88210 District III 1000 Rio Brazos Rd., Aztec, NM 87410 District IV 1220 S. St. Francis Dr., Santa Fe, NM 87505		State of New Mexico Energy, Minerals and Natural Resources  Oil Conservation Division 1220 South St. Francis Dr. Santa Fe, NM 87505				Form C-105 Revised August 1, 2011				
		1. WELL API NO.		30-025-47878		2. Type of Lease		<input type="checkbox"/> STATE <input type="checkbox"/> FEE <input checked="" type="checkbox"/> FED/INDIAN		
		3. State Oil & Gas Lease No.				5. Lease Name or Unit Agreement Name		JUPITER 19 FED COM		
4. Reason for filing:		<input checked="" type="checkbox"/> <b>COMPLETION REPORT</b> (Fill in boxes #1 through #31 for State and Fee wells only)		6. Well Number:		510H				
<input type="checkbox"/> <b>C-144 CLOSURE ATTACHMENT</b> (Fill in boxes #1 through #9, #15 Date Rig Released and #32 and/or #33; attach this and the plat to the C-144 closure report in accordance with 19.15.17.13.K NMAC)		7. Type of Completion:		<input checked="" type="checkbox"/> NEW WELL <input type="checkbox"/> WORKOVER <input type="checkbox"/> DEEPENING <input type="checkbox"/> PLUGBACK <input type="checkbox"/> DIFFERENT RESERVOIR <input type="checkbox"/> OTHER		8. Name of Operator		EOG RESOURCES INC		
8. Name of Operator		EOG RESOURCES INC		9. OGRID		7377		11. Pool name or Wildcat		
10. Address of Operator		PO BOX 2267 MIDLAND, TEXAS 79702		11. Pool name or Wildcat		RED HILLS; BONE SPRING, NORTH				
12. Location	Unit Ltr	Section	Township	Range	Lot	Feet from the	N/S Line	Feet from the	E/W Line	County
<b>Surface:</b>	A	19	24S	34E		566	NORTH	1096	EAST	LEA
<b>BH:</b>	H	30	24S	34E		2530	NORTH	316	EAST	LEA
13. Date Spudded	14. Date T.D. Reached	15. Date Rig Released		16. Date Completed (Ready to Produce)		17. Elevations (DF and RKB, RT, GR, etc.)		3550' GL		
02/21/2021	04/12/2021	04/14/2021		08/26/2021						
18. Total Measured Depth of Well		19. Plug Back Measured Depth		20. Was Directional Survey Made?		21. Type Electric and Other Logs Run		None		
MD 18,505'		TVD 11,102'		MD 18,476' TVD 11,102'		YES				
22. Producing Interval(s), of this completion - Top, Bottom, Name		BONE SPRING 11,122 - 18,476'								
<b>23. CASING RECORD (Report all strings set in well)</b>										
CASING SIZE	WEIGHT LB./FT.	DEPTH SET	HOLE SIZE	CEMENTING RECORD	AMOUNT PULLED					
13 3/8"	54.5# J-55	1420'	16"	1390 SXS CL C/CIRC						
9 5/8"	40# ECP 110	5130'	12 1/4"	1555 SXS CL C/CIRC						
5 1/2"	20# ECP 110	18,484'	8 1/2"	2685 SXS CL C TOC 5160' CBL						
24. LINER RECORD					25. TUBING RECORD					
SIZE	TOP	BOTTOM	SACKS CEMENT	SCREEN	SIZE	DEPTH SET	PACKER SET			
26. Perforation record (interval, size, and number)				27. ACID, SHOT, FRACTURE, CEMENT, SQUEEZE, ETC.						
11,122 - 18,476' 3 1/8", 1500 holes				DEPTH INTERVAL		AMOUNT AND KIND MATERIAL USED				
				11,122 -18,476'		FRAC W/18,312,509 lbs proppant, 278,236 bbls load fld				
<b>28. PRODUCTION</b>										
Date First Production		Production Method (Flowing, gas lift, pumping - Size and type pump)				Well Status (Prod. or Shut-in)				
08/26/2021		Flowing				Producing				
Date of Test	Hours Tested	Choke Size	Prod'n For Test Period	Oil - Bbl	Gas - MCF	Water - Bbl.	Gas - Oil Ratio			
09/01/2021	24	66		4165	4888	10,321	1174			
Flow Tubing Press.	Casing Pressure	Calculated 24-Hour Rate	Oil - Bbl.	Gas - MCF	Water - Bbl.	Oil Gravity - API - (Corr.)				
	988					43				
29. Disposition of Gas (Sold, used for fuel, vented, etc.)						30. Test Witnessed By				
SOLD										
31. List Attachments										
C-102, C-104, C-103, Directional Survey, H spacing										
32. If a temporary pit was used at the well, attach a plat with the location of the temporary pit.										
33. If an on-site burial was used at the well, report the exact location of the on-site burial:										
Latitude			Longitude			NAD 1927 1983				
I hereby certify that the information shown on both sides of this form is true and complete to the best of my knowledge and belief										
Signature		Name		Title		Date				
Kay Maddox		Kay Maddox		Senior Regulatory Specialist		09/07/2021				
E-mail Address kay_maddox@eogresources.com										

# INSTRUCTIONS

This form is to be filed with the appropriate District Office of the Division not later than 20 days after the completion of any newly-drilled or deepened well and not later than 60 days after completion of closure. When submitted as a completion report, this shall be accompanied by one copy of all electrical and radio-activity logs run on the well and a summary of all special tests conducted, including drill stem tests. All depths reported shall be measured depths. In the case of directionally drilled wells, true vertical depths shall also be reported. For multiple completions, items 11, 12 and 26-31 shall be reported for each zone.

## INDICATE FORMATION TOPS IN CONFORMANCE WITH GEOGRAPHICAL SECTION OF STATE

Southeastern New Mexico		Northwestern New Mexico	
T. Anhy Rustler 1246'	T. Canyon Brushy 7598'	T. Ojo Alamo	T. Penn A"
T. Salt 1851'	T. Strawn	T. Kirtland	T. Penn. "B"
B. Salt 4821'	T. Atoka	T. Fruitland	T. Penn. "C"
T. Yates	T. Miss	T. Pictured Cliffs	T. Penn. "D"
T. 7 Rivers	T. Devonian	T. Cliff House	T. Leadville
T. Queen	T. Silurian	T. Menefee	T. Madison
T. Grayburg	T. Montoya	T. Point Lookout	T. Elbert
T. San Andres	T. Simpson	T. Mancos	T. McCracken
T. Glorieta	T. McKee	T. Gallup	T. Ignacio Otzte
T. Paddock	T. Ellenburger	Base Greenhorn	T. Granite
T. Blinebry	T. Gr. Wash	T. Dakota	
T. Tubb	T. Delaware Sand	T. Morrison	
T. Drinkard	T. Bone Springs	T. Todilto	
T. Abo	T. 1st BS Sand 10,039'	T. Entrada	
T. Wolfcamp	T. 2nd BS Sand 10,530'	T. Wingate	
T. Penn	T.	T. Chinle	
T. Cisco (Bough C)	T.	T. Permian	

### OIL OR GAS SANDS OR ZONES

No. 1, from.....to..... No. 3, from.....to.....  
 No. 2, from.....to..... No. 4, from.....to.....

### IMPORTANT WATER SANDS

Include data on rate of water inflow and elevation to which water rose in hole.

No. 1, from.....to.....feet.....  
 No. 2, from.....to.....feet.....  
 No. 3, from.....to.....feet.....

### LITHOLOGY RECORD (Attach additional sheet if necessary)

From	To	Thickness In Feet	Lithology	From	To	Thickness In Feet	Lithology



**District I**  
 1625 N. French Dr., Hobbs, NM 88240  
 Phone:(575) 393-6161 Fax:(575) 393-0720

**District II**  
 811 S. First St., Artesia, NM 88210  
 Phone:(575) 748-1283 Fax:(575) 748-9720

**District III**  
 1000 Rio Brazos Rd., Aztec, NM 87410  
 Phone:(505) 334-6178 Fax:(505) 334-6170

**District IV**  
 1220 S. St Francis Dr., Santa Fe, NM 87505  
 Phone:(505) 476-3470 Fax:(505) 476-3462

**State of New Mexico**  
**Energy, Minerals and Natural Resources**  
**Oil Conservation Division**  
**1220 S. St Francis Dr.**  
**Santa Fe, NM 87505**

ACKNOWLEDGMENTS

Action 47023

**ACKNOWLEDGMENTS**

Operator: EOG RESOURCES INC P.O. Box 2267 Midland, TX 79702	OGRID: 7377
	Action Number: 47023
	Action Type: [C-104] Completion Packet (C-104C)

**ACKNOWLEDGMENTS**

<input checked="" type="checkbox"/>	I hereby certify that the required Water Use Report has been, or will be, submitted for this wells completion.
<input checked="" type="checkbox"/>	I hereby certify that the required FracFocus disclosure has been, or will be, submitted for this wells completion.

**District I**  
 1625 N. French Dr., Hobbs, NM 88240  
 Phone:(575) 393-6161 Fax:(575) 393-0720

**District II**  
 811 S. First St., Artesia, NM 88210  
 Phone:(575) 748-1283 Fax:(575) 748-9720

**District III**  
 1000 Rio Brazos Rd., Aztec, NM 87410  
 Phone:(505) 334-6178 Fax:(505) 334-6170

**District IV**  
 1220 S. St Francis Dr., Santa Fe, NM 87505  
 Phone:(505) 476-3470 Fax:(505) 476-3462

**State of New Mexico**  
**Energy, Minerals and Natural Resources**  
**Oil Conservation Division**  
**1220 S. St Francis Dr.**  
**Santa Fe, NM 87505**

CONDITIONS  
 Action 47023

**CONDITIONS**

Operator: EOG RESOURCES INC P.O. Box 2267 Midland, TX 79702	OGRID: 7377
	Action Number: 47023
	Action Type: [C-104] Completion Packet (C-104C)

**CONDITIONS**

Created By	Condition	Condition Date
plmartinez	File 3160-4 Completion Report within 10 days to NMOCD after BLM approval.	11/16/2021