

Well Name: APACHE JVA	Well Location: T27N / R2W / SEC 16 /	County or Parish/State: RIO ARRIBA / NM
Well Number: 6	Type of Well: OIL WELL	Allottee or Tribe Name: JICARILLA APACHE
Lease Number: 701990014	Unit or CA Name:	Unit or CA Number:
US Well Number: 3003921987	Well Status: Gas Well Shut In	Operator: JICARILLA APACHE ENERGY CORPORATION

Subsequent Report

Sundry ID: 2630877

Type of Submission: Subsequent Report

Date Sundry Submitted: 08/26/2021

Date Operation Actually Began: 08/16/2021

Type of Action: Temporary Abandonment

Time Sundry Submitted: 11:59

Actual Procedure: August 16, 2021 SPOT BASE BEAM RIG UP SERVICE UNIT SITP 0 PSI SICP 500 PSI UNSEAT PUMP LD 3 RODS PARAFIN ON RODS SECURE WELL SDFN August 17, 2021 SITP 0 PSI SICP 600 PSI BLED CSG TO PIT 100% GAS RU HOT OILER PUMP 35 BBLS FW 2% KCL DOWN CSG 0 PSI 270 DEGREES PUMP 35 BBLS FW 2% KCL DOWN TBG 0 PSI 270 DEGREES RIG DOWN HOTOILER LD 69 7/8' RODS 165 3.4' RODS ND WELLHEAD NU BOP CYCLE RAMS TOH WITH 19 STNDS 2 3/8" TBG SECURE WELL SDFN August 18, 2021 SITP 0 PSI SICP 0 PSI FINISH TOH WITH 2 3/8" TBG SLM OUT OF HOLE TIH WITH 3 7/8" BIT 4 1/2" CSG SCRAPER 2 3/8" TBG TO 4600 TOH WITH SCRAPER AND TBG LS SCRAPER TIH WITH 4 1/2" CMT RET AND 2 3/8" TBG RET SET @ 4556' LD 2 JTS TBG PUMP 180 BBLS FW 2%KCL DOWN TBG ESTABLISH CIR OUT CSG CIRC GAS OUT TO PIT 2 BPM 300 PSI CLOSE CSG TEST CSG TO 500 PSI LEFT PRESSURE ON CSG SECURE WELL SDFN WILL DO TA TEST IN AM NOTIFIED JARAD BENALLY OF BLM FARMINGTON AND MONICA OF NMOCD AZTEC August 19, 2021 PRESSURE CSG TO 500 PSI HELD FOR 30 MIN TEST WAS SUCCESSFUL TEST WAS WITNESSED BY JARAD BENALLY BLM FARMINGTON TEST WAS CHARTED BLED PRESSURE OFF 2 3/8 TBS SETTING TOOL ON FLOAT ND BOP INSTALLED WELLHEAD SECURE WELL SDFN August 20, 2021 RIG DOWN SERVICE UNIT CLEAN LOCATION

Well Name: APACHE JVA	Well Location: T27N / R2W / SEC 16 /	County or Parish/State: RIO ARRIBA / NM
Well Number: 6	Type of Well: OIL WELL	Allottee or Tribe Name: JICARILLA APACHE
Lease Number: 701990014	Unit or CA Name:	Unit or CA Number:
US Well Number: 3003921987	Well Status: Gas Well Shut In	Operator: JICARILLA APACHE ENERGY CORPORATION

SR Attachments

Actual Procedure

Apache_JVA_6_TA_Pressure_Chart_20210819_20210826115759.pdf

Operator Certification

I certify that the foregoing is true and correct. Title 18 U.S.C. Section 1001 and Title 43 U.S.C. Section 1212, make it a crime for any person knowingly and willfully to make to any department or agency of the United States any false, fictitious or fraudulent statements or representations as to any matter within its jurisdiction. Electronic submission of Sundry Notices through this system satisfies regulations requiring a submission of Form 3160-5 or a Sundry Notice.

Operator Electronic Signature: DANIEL MANUS	Signed on: AUG 26, 2021 11:58 AM
Name: JICARILLA APACHE ENERGY CORPORATION	
Title: REGULATORY SPECIALIST	
Street Address: 3200 N 1st Street	
City: Bloomfield	State: NM
Phone: (505) 634-5104	
Email address: dmanus@blackhawkenergycorp.com	

Field Representative

Representative Name:		
Street Address:		
City:	State:	Zip:
Phone:		
Email address:		

BLM Point of Contact

BLM POC Name: KENNETH G RENNICK	BLM POC Title: Petroleum Engineer
BLM POC Phone: 9708783846	BLM POC Email Address: krennick@blm.gov
Disposition: Accepted	Disposition Date: 09/07/2021
Signature: Kenneth Rennick	

Apache JVA #6
API 3003921987
Section 16, T27N & R3W
PBTD – 6223
TD – 6228
Perfs 4656-4855 & 5782-6112

August 16, 2021

SPOT BASE BEAM RIG UP SERVICE UNIT SITP 0 PSI SICP 500 PSI UNSEAT PUMP LD 3 RODS PARAFIN ON
RODS SECURE WELL SDFN

August 17, 2021

SITP 0 PSI SICP 600 PSI BLED CSG TO PIT 100% GAS RU HOT OILER PUMP 35 BBLS FW 2% KCL DOWN
CSG 0 PSI 270 DEGREES PUMP 35 BBLS FW 2% KCL DOWN TBG 0 PSI 270 DEGREES RIG DOWN
HOTOILER LD 69 7/8' RODS 165 3.4' RODS ND WELLHEAD NU BOP CYCLE RAMS TOH WITH 19 STNDS 2
3/8" TBG SECURE WELL SDFN

August 18, 2021

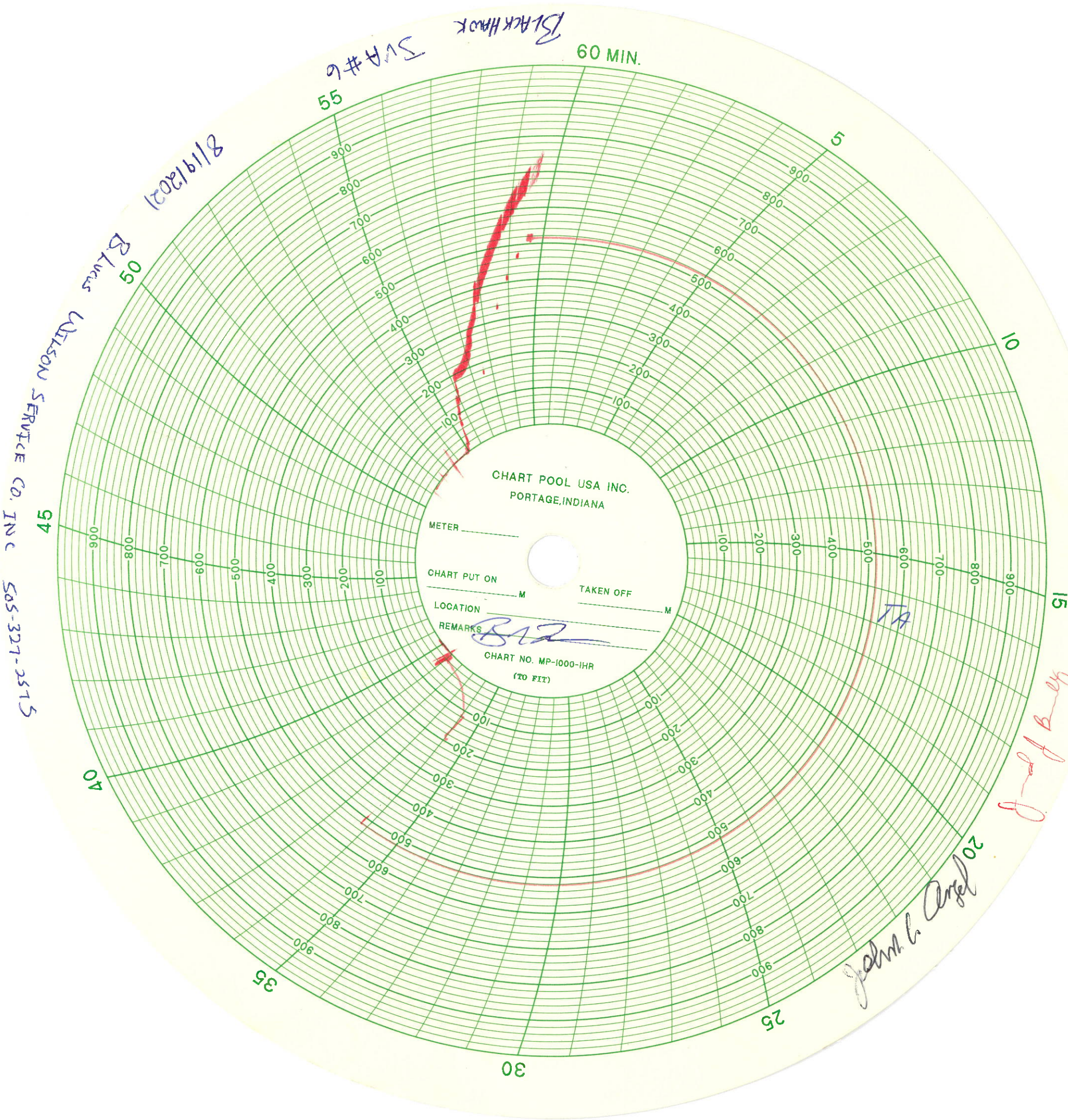
SITP 0 PSI SICP 0 PSI FINISH TOH WITH 2 3/8" TBG SLM OUT OF HOLE TIH WITH 3 7/8" BIT 4 1/2" CSG
SCRAPER 2 3/8" TBG TO 4600 TOH WITH SCRAPER AND TBG LS SCRAPER TIH WITH 4 1/2" CMT RET
AND 2 3/8" TBG RET SET @ 4556' LD 2 JTS TBG PUMP 180 BBLS FW 2%KCL DOWN TBG ESTABLISH CIR
OUT CSG CIRC GAS OUT TO PIT 2 BPM 300 PSI CLOSE CSG TEST CSG TO 500 PSI LEFT PRESSURE ON CSG
SECURE WELL SDFN WILL DO TA TEST IN AM NOTIFIED JARAD BENALLY OF BLM FARMINGTON AND
MONICA OF NMOCD AZTEC

August 19, 2021

PRESSURE CSG TO 500 PSI HELD FOR 30 MIN TEST WAS SUCCESSFUL TEST WAS WITNESSED BY JARAD
BENALLY BLM FARMINGTON TEST WAS CHARTED BLED PRESSURE OFF 2 3/8" TBS SETTING TOOL ON
FLOAT ND BOP INSTALLED WELLHEAD SECURE WELL SDFN

August 20, 2021

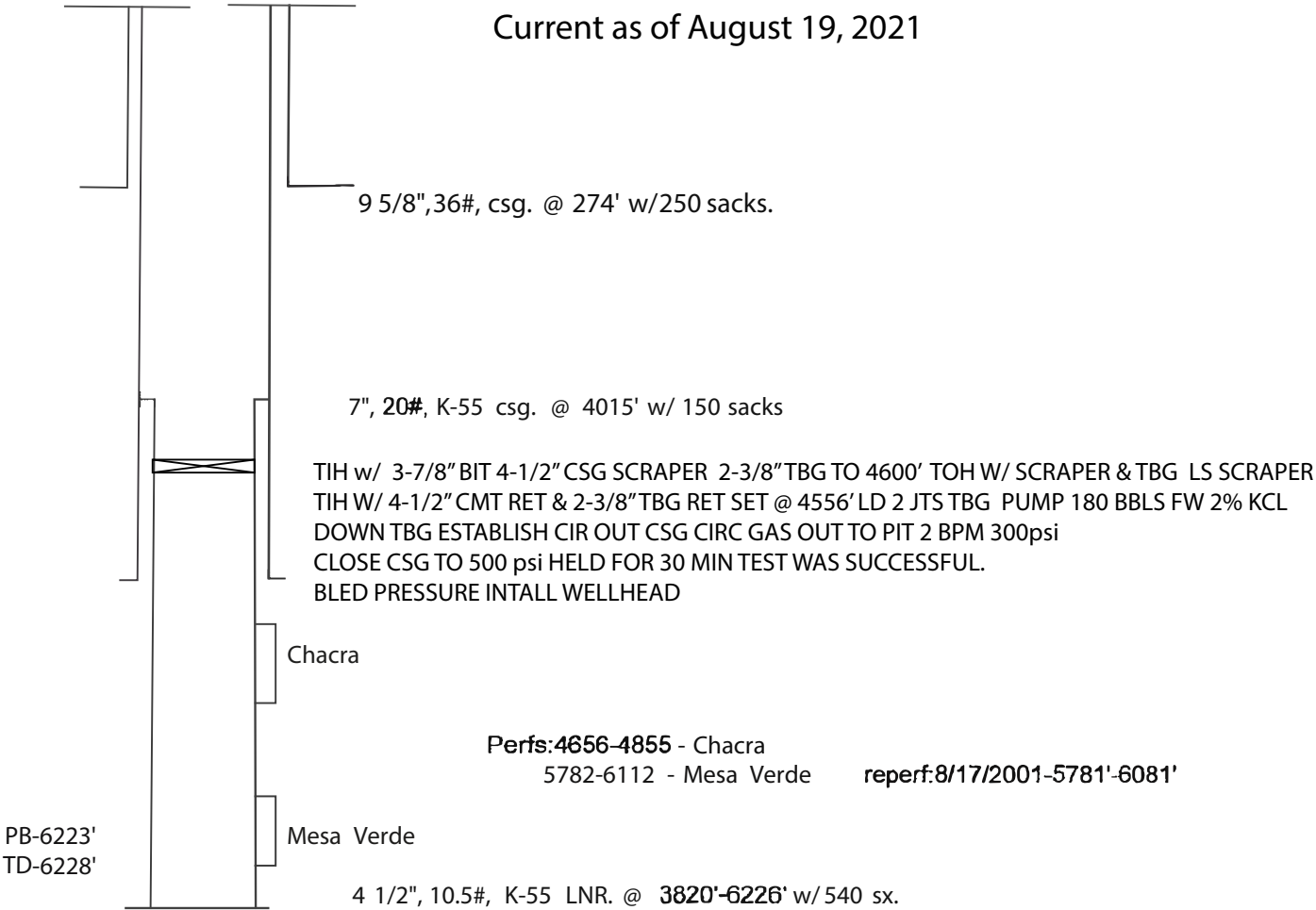
RIG DOWN SERVICE UNIT CLEAN LOCATION



Jicarilla Apache Energy Corporation

JVA #6
1450'FSL, 1450'FWL, Sec. 16, T27N, R02W
Field: Blanco Mesa Verde
API #: 3003921987
Rio Arriba Co., NM Elevation: 7313'

Current as of August 19, 2021



Completion Date: 11/27/79, Initial Prod- 457 MCF/D.

District I
1625 N. French Dr., Hobbs, NM 88240
Phone:(575) 393-6161 Fax:(575) 393-0720
District II
811 S. First St., Artesia, NM 88210
Phone:(575) 748-1283 Fax:(575) 748-9720
District III
1000 Rio Brazos Rd., Aztec, NM 87410
Phone:(505) 334-6178 Fax:(505) 334-6170
District IV
1220 S. St Francis Dr., Santa Fe, NM 87505
Phone:(505) 476-3470 Fax:(505) 476-3462

State of New Mexico
Energy, Minerals and Natural Resources
Oil Conservation Division
1220 S. St Francis Dr.
Santa Fe, NM 87505

COMMENTS

Action 47055

COMMENTS

Operator: JICARILLA ENERGY CO P.O. Box 249 Bloomfield, NM 87413	OGRID: 11859
	Action Number: 47055
	Action Type: [C-103] Sub. Temporary Abandonment (C-103U)

COMMENTS

Created By	Comment	Comment Date
mkuehling	for record	11/18/2021

District I
1625 N. French Dr., Hobbs, NM 88240
Phone:(575) 393-6161 Fax:(575) 393-0720
District II
811 S. First St., Artesia, NM 88210
Phone:(575) 748-1283 Fax:(575) 748-9720
District III
1000 Rio Brazos Rd., Aztec, NM 87410
Phone:(505) 334-6178 Fax:(505) 334-6170
District IV
1220 S. St Francis Dr., Santa Fe, NM 87505
Phone:(505) 476-3470 Fax:(505) 476-3462

State of New Mexico
Energy, Minerals and Natural Resources
Oil Conservation Division
1220 S. St Francis Dr.
Santa Fe, NM 87505

CONDITIONS

Action 47055

CONDITIONS

Operator: JICARILLA ENERGY CO P.O. Box 249 Bloomfield, NM 87413	OGRID: 11859
	Action Number: 47055
	Action Type: [C-103] Sub. Temporary Abandonment (C-103U)

CONDITIONS

Created By	Condition	Condition Date
mkuehling	None	11/18/2021