

District I (575) 393-6161
1625 N. French Dr., Hobbs, NM 88240
District II (575) 748-1283
811 S. First St., Artesia, NM 88210
District III (505) 334-6178
1000 Rio Brazos Road, Aztec, NM 87410
District IV (505) 827-8198
1220 S. St. Francis Dr., Santa Fe, NM 87505

State of New Mexico
Energy Minerals and Natural Resources

Oil Conservation Division
1220 South St. Francis Dr.
Santa Fe, NM 87505

Form C-106
Revised August 1, 2011

ACT Permit No.
C106-899-A

NOTICE OF INTENTION TO UTILIZE AUTOMATIC CUSTODY TRANSFER EQUIPMENT

Operator Enduring Resources IV, LLC

Address 200 Energy Court Farmington, NM 87401 County San Juan

Lease(s) to be served by this ACT Unit: NMNM130812A (S Escavada Unit)

Pool(s) to be served by this ACT Unit Rusty Gallup Oil Pool (52860)

Location of ACT System: Unit F Section 26 Township 22N Range 7W

Order No. authorizing commingling between leases if more than one lease is to be served by this system.

R-14347 Date 5/15/2017

Order No. authorizing commingling between pools if more than one pool is to be served by this system

N/A Date N/A

Authorized transporter of oil from this system Marathon Petroleum (FKA Western Refining Company)

Transporter's address 6500 Trowbridge Drive El Paso, TX 79905

Maximum expected daily through-put for this system: 2,000 BBL/Day

If system fails to transfer oil due to malfunction or otherwise, waste by overflow will be averted by:

CHECK ONE: A. ☐ Automatic shut-down facilities B. ☒ Providing adequate available capacity to receive production
as required by 19.15.18.15.C(8) NMAC during maximum unattended time of lease operation
19.15.18.15.C(9) NMAC

If "A" above is checked, will flowing wells be shut-in at the header manifold or at the wellhead?

NA Maximum well-head shut-in pressure N/A

If "B" above is checked, how much storage capacity is available above the normal high working level of the

surge tank 150 BBLs.

What is the normal maximum unattended time of lease operation? Sixteen (16) Hours.

What device will be used for measuring oil in this ACT unit?

CHECK ONE: ☐ Positive displacement meter ☐ Weir-type measuring vessel
☐ Positive volume metering chamber ☒ Other; describe Coriolis Meter

Remarks: This LACT will be selling to pipeline.

OPERATOR:

I hereby certify above information is true and complete to best of my knowledge and subject ACT system will be installed and operated in accordance with Rule 19.15.18.15 NMAC. Approval of this Form
C-106 does not eliminate necessity of an approved C-104 prior to running any oil or gas from this system.

Signature Heather Huntington

Printed Name & Title Heather Huntington, Permitting Tech

E-mail Address hhuntington@enduringresources.com

Date 10/29/21 Telephone (505) 636-9751

OIL CONSERVATION DIVISION

Approved by: Dean R McClure

Title: Petroleum Engineer

Date: 11/18/2021

C106-899-A supersedes C106-899

INSTRUCTIONS: Submit one copy of Form C-106 with following attachments to appropriate district office.

- 1) Lease plat showing all wells which will be produced in ACT system.
- 2) Schematic diagram of battery and ACT equipment showing all major components and means employed to prove accuracy of measuring device.
- 3) Letter from transporter agreeing to utilization of ACT system as shown on schematic diagram.

**NOTICE OF INTENTION TO UTILIZE AUTOMATIC CUSTODY TRANSFER EQUIPMENT
S ESCAVADA UNIT 352H/353H/354H/347H/350H/351H PIPELINE LACT UNIT:**

WELLS TO BE SERVED BY PIPELINE LACT UNIT:

- S ESCAVADA UNIT 352H / API # 30-043-21323/ UNIT F Sec. 26, T22N, R7W, NMPM
- S ESCAVADA UNIT 353H / API # 30-043-21320/ UNIT F Sec. 26, T22N, R7W, NMPM
- S ESCAVADA UNIT 354H / API # 30-043-21319/ UNIT F Sec. 26, T22N, R7W, NMPM
- S ESCAVADA UNIT 347H/ API # 30-043-21349/ UNIT I Sec. 27, T22N, R7W, NMPM
- S ESCAVADA UNIT 350H/ API # 30-043-21318/ UNIT I Sec. 27, T22N, R7W, NMPM
- S ESCAVADA UNIT 351H/ API # 30-043-21317/ UNIT I Sec. 27, T22N, R7W, NMPM

19.15.18.15 AUTOMATIC CUSTODY TRANSFER EQUIPMENT:

A. Oil shall be received and measured in facilities of an approved design. The facilities shall permit the testing of each well at reasonable intervals and may be comprised of manually gauged, closed stock tanks for which the operator of the ACT system has prepared proper strapping tables, or of ACT equipment. The division shall permit ACT equipment's use only after the operator complies with the following. The operator shall file with the division form C-106 and receive approval for use of the ACT equipment prior to transferring oil through the ACT system. The carrier shall not accept delivery of oil through the ACT system until the division has approved form C-106.

- *Summary is attached to Form C-106 Notice of Intent to Utilize Automatic Custody Transfer Equipment*

B. The operator of the ACT system shall submit form C-106 to the appropriate division district office, which is accompanied by the following:

- (1) plat of the lease showing all wells that the any well operator will produce into the ACT system;
 - *Attached as part of Form C-106 Notice of Intent*
- (2) schematic diagram of the ACT equipment, showing on the diagram all major components such as surge tanks and their capacity, extra storage tanks and their capacity, transfer pumps, monitors, reroute valves, treaters, samplers, strainers, air and gas eliminators, back pressure valves and metering devices (indicating type and capacity, *i.e.* whether automatic measuring tank, positive volume metering chamber, weir-type measuring vessel or positive displacement meter); the schematic diagram shall also show means employed to prove the measuring device's accuracy; and

- *Attached as part of Form C-106 Notice of Intent*

- (3) letter from transporter agreeing to utilization of ACT system as shown on schematic diagram.

- *Attached as part of Form C-106 Notice of Intent*

C. The division shall not approve form C-106 unless the operator of the ACT system will install and operate the ACT system in compliance with the following requirements.

(1) Provision is made for accurate determination and recording of uncorrected volume and applicable temperature, or of temperature corrected volume. The system's overall accuracy shall equal or surpass manual methods.

- *The LACT system is more accurate when compared to a manual tank sale. It is proved per BLM Onshore Order #4 Measurement of Oil and API MPMS Chapter 4 Proving Systems; with a volumetric prover that meets the requirements set forth in Onshore Order #4. The LACT also has a temperature RTD which will be calibrated semi-annually, unless more frequent verification is requested by the division.*

(2) Provision is made for representative sampling of the oil transferred for determination of API gravity and BS&W content.

- *The LACT is equipped with a flow proportional sampler (sample probe and actuated valve). The sampled fluid is stored in a sealed cylinder that is used for API gravity and S&W determination.*

(3) Provision is made if required by either the oil's producer or the transporter to give adequate assurance that the ACT system runs only merchantable oil.

- *The LACT is equipped with a water cut analyzer that communicates with the flow computer. When the S&W set point is reached the divert valve will engage sending non-merchantable oil to a divert tank. The set point can be adjusted in the flow computer but only if agreed upon by both shipper and producer.*

(4) Provision is made for set-stop counters to stop the flow of oil through the ACT system at or prior to the time the allowable has been run. Counters shall provide non-reset totalizers that are visible for inspection at all times.

- ***The Coriolis meter has non-resettable totalizer which is always visibly available on the LCD display.***

(5) Necessary controls and equipment are enclosed and sealed, or otherwise arranged to provide assurance against, or evidence of, accidental or purposeful mismeasurement resulting from tampering.

- ***Required ports are sealed and tracked in the seal log.***

(6) The ACT system's components are properly sized to ensure operation within the range of their established ratings. All system components that require periodic calibration or inspection for proof of continued accuracy are readily accessible; the frequency and methods of the calibration or inspection shall be as set forth in Paragraph (12) of Subsection C of 19.15.18.15 NMAC.

- ***The Coriolis is proved per BLM Onshore Order #4 Measurement of Oil and API MPMS Chapter 4 Proving Systems; with a volumetric prover that meets the requirements set forth in Onshore Order #4. The prover is NIST traceable and water drawn on a bi-annual basis. Proving will be consistent with Onshore Order #4, unless a variance is granted by the Division. NMOCD representatives are sent the schedule to witness if desired. The temperature transmitter is verified on a semi-annual basis, unless more frequent verification is requested by the Division. The water cut analyzer is calibrated as needed.***

(7) The control and recording system includes adequate fail-safe features that provide assurance against mismeasurement in the event of power failure, or the failure of the ACT system's component parts.

- ***In the event of power failure, the divert valve mechanically goes to "failed state" and no longer sales oil but only sends it to the divert tank.***
- ***All of the historized volume data is stored in flow computer memory with battery backup and is also transmitted by SCADA, multiple times a day, to an office server. So even during a power failure no oil volume is lost.***
- ***In the event of a malfunction, the LACT unit is programmed to shut off and divert valve is forced to close and no longer sales oil but only sends it to the divert tank. The malfunction is also logged by the flow computer.***

(8) The ACT system and allied facilities include fail-safe equipment as may be necessary, including high level switches in the surge tank or overflow storage tank that, in the event of power failure or malfunction of the ACT or other equipment, will shut down artificially lifted wells connected to the ACT system and will shut in flowing wells at the well-head or at the header manifold, in which latter case the operator of the ACT system shall pressure test all flowlines to at least 1½ times the maximum well-head shut-in pressure prior to the ACT system's initial use and every two years thereafter.

- ***Hi level switches are in place and will shut the well in at the inlet to the production unit in the event of a full tank. Flow lines were tested to 1 ½ times shut in pressure at initial construction. Testing will commence every two years to ensure piping integrity.***

(9) As an alternative to the requirements of Paragraph (8) of Subsection C of 19.15.18.15 NMAC the producer shall provide and at all times maintain a minimum of available storage capacity above the normal high working level of the surge tank to receive and hold the amount of oil that may be produced during maximum unattended time of lease operation.

- ***N/A***

(10) In all ACT systems employing automatic measuring tanks, weir-type measuring vessels, positive volume metering chambers or any other volume measuring container, the container and allied components shall be properly calibrated prior to initial use and shall be operated, maintained and inspected as necessary to ensure against incrustation, changes in clingage factors, valve leakage or other leakage and improper action of floats, level detectors, etc.

- ***N/A – Coriolis Meter***

(11) In ACT systems employing positive displacement meters, the meter and allied components shall be properly calibrated prior to initial use and shall be operated, maintained and inspected as necessary to ensure against oil mismeasurement.

- ***The Coriolis is proved per BLM Onshore Order #4 Measurement of Oil and API MPMS Chapter 4 Proving Systems; with a volumetric prover that meets the requirements set forth in Onshore***

Order #4. The prover is NIST traceable and water drawn on a bi-annual basis. Monthly proving will continue per the rule, unless a variance is granted by the Division. NMOCD representatives are sent the schedule to witness if desired. The temperature transmitter is verified on a semi-annual basis, unless more frequent verification is requested by the Division.

(12) The operator of the ACT system shall check the measuring and recording devices of ACT systems for accuracy at least once each month unless it has obtained an exception to such determination from the division. Where applicable, the operator of the ACT system shall use API standard 1101, Measurement of Petroleum Hydrocarbons by Positive Displacement Meter. Meters may be proved against master meters, portable prover tanks or prover tanks permanently installed on the lease. If the operator of the ACT system uses permanently installed prover tanks, the distance between the opening and closing levels and the provision for determining the opening and closing readings shall be sufficient to detect variations of 5/100 of one percent. The operator of the ACT system shall file reports of determination on the division form entitled "meter test report" or on another acceptable form in duplicate with the appropriate division district office.

- ***The Coriolis is proved per BLM Onshore Order #4 Measurement of Oil and API MPMS Chapter 4 Proving Systems; with a volumetric prover that meets the requirements set forth in Onshore Order #4. The prover is NIST traceable and water drawn on a bi-annual basis. Monthly proving will continue per the rule, unless a variance is granted by the Division. NMOCD representatives are sent the schedule to witness if desired. The temperature transmitter is verified on a semi-annual basis, unless more frequent verification is requested by the Division.***

(13) To obtain an exception to the requirement in Paragraph (12) of Subsection C of 19.15.18.15 NMAC that all measuring and recording devices be checked for accuracy once each month, either the producer or transporter may file a request with the director setting forth facts pertinent to the exception. The application shall include a history of the average factors previously obtained, both tabulated and plotted on a graph of factors versus time, showing that the particular installation has experienced no erratic drift. The applicant shall also furnish evidence that the other interested party has agreed to the exception. The director may then set the frequency for determination of the system's accuracy at the interval which the director deems prudent.

- *N/A*

D. The division may revoke its approval of an ACT system's form C-106 if the system's operator fails to operate it in compliance with 19.15.18.15 NMAC.

District I
1625 N. French Drive, Hobbs, NM 88240
Phone: (505) 393-6161 Fax: (505) 393-0720

District II
811 S. First Street, Artesia, NM 88210
Phone: (505) 746-1283 Fax: (505) 746-9720

District III
1000 Rio Brazos Road, Aztec, NM 87410
Phone: (505) 334-6178 Fax: (505) 334-6170

District IV
1220 S. St. Francis Drive, Santa Fe, NM 87505
Phone: (505) 476-3460 Fax: (505) 476-3462

State of New Mexico
Energy, Minerals & Natural Resources Department

Form C-102
Revised August 1, 2011

Submit one copy to
Appropriate District Office

OIL CONSERVATION DIVISION

1220 South St. Francis Drive
Santa Fe, NM 87505

☐ AMENDED REPORT

AS DRILLED

WELL LOCATION AND ACREAGE DEDICATION PLAT

¹ API Number 30-043-21323	² Pool Code 52860	³ Pool Name RUSTY GALLUP OIL POOL
⁴ Property Code 322151	⁵ Property Name S ESCAVADA UNIT	⁶ Well Number 352H
⁷ GRID No. 372286	⁸ Operator Name ENDURING RESOURCES, LLC	⁹ Elevation 6776'

¹⁰ Surface Location

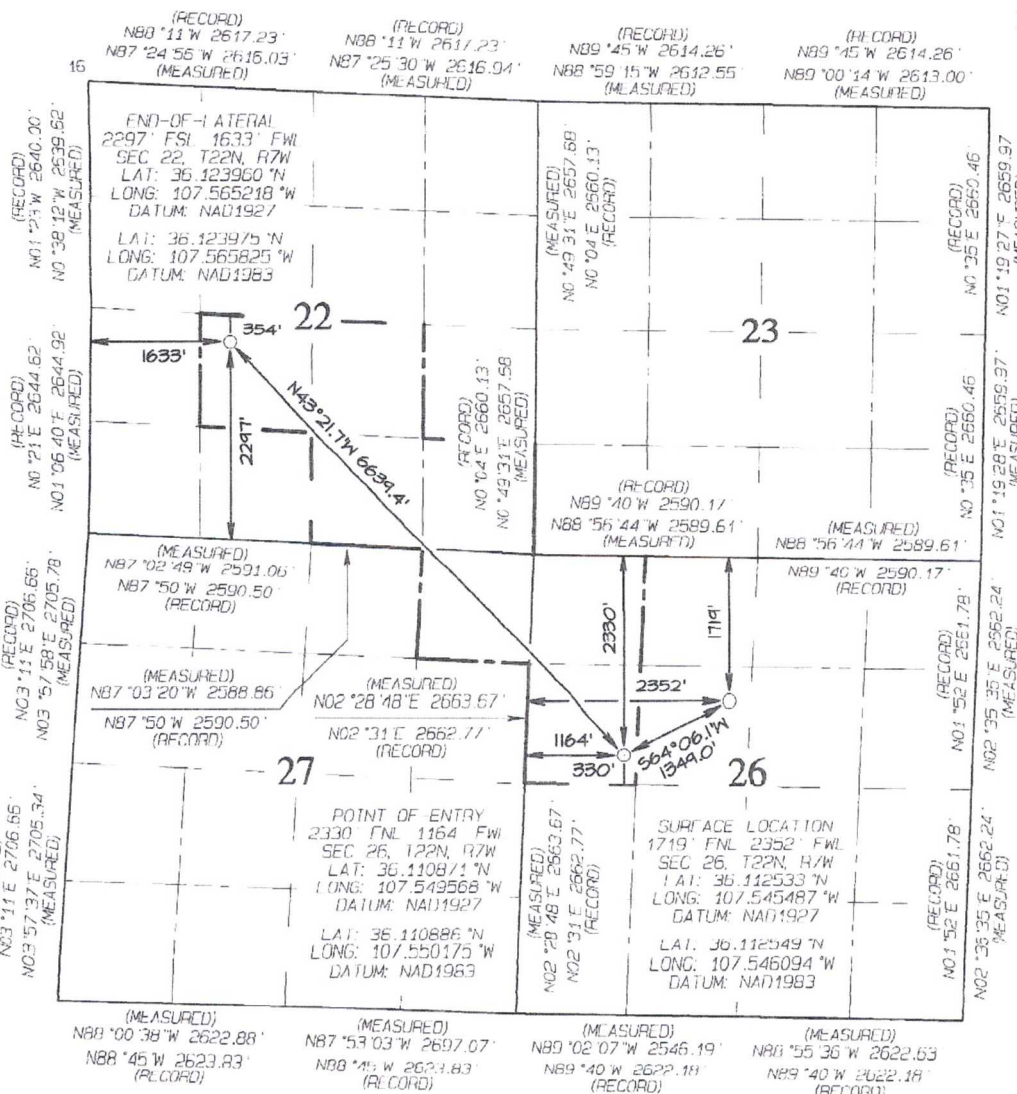
UL or lot no.	Section	Township	Range	Lot Idn	Feet from the	North/South line	Feet from the	East/West line	County
I	26	22N	7W		1719	NORTH	2352	WLST	SANDOVAL

¹¹ Bottom Hole Location If Different From Surface

UL or lot no.	Section	Township	Range	Lot Idn	Feet from the	North/South line	Feet from the	East/West line	County
K	22	22N	7W		2297	SOUTH	1633	WEST	SANDOVAL

¹² Dedicated Acres 280.00	¹³ Joint or Infill NE/4 SW/4, W/2 SE/4 SE/4 SE/4 - Section 22 W/2 NW/4 - Section 26 NE/4 NE/4 - Section 27	¹⁴ Consolidation Code	¹⁵ Order No. R-14347
--	---	----------------------------------	---

NO ALLOWABLE WELL BE ASSIGNED
TO THIS COMPLETION UNTIL ALL
INTERESTS HAVE BEEN CONSOLIDATED
OR A NON-STANDARD UNIT HAS
BEEN APPROVED BY THE DIVISION

¹⁷ OPERATOR CERTIFICATION

I hereby certify that the information contained herein is true and complete to the best of my knowledge and belief, and that this organization either owns a working interest or unleased mineral interest in the land including the proposed bottom-hole location or has a right to drill this well at this location pursuant to a contract with an owner of such a mineral or working interest, or to a voluntary pooling agreement or a compulsory pooling order heretofore ordered by the division.

10/4/18

Signature
Lacey Granillo

Date

Printed Name
lgranillo@enduringresources.com

E-mail Address

¹⁸ SURVEYOR CERTIFICATION

I hereby certify that the well location shown on this plat was plotted from field notes of actual surveys made by me or under my supervision, and that the same is true and correct to the best of my belief.

Date Revised: OCTOBER 3, 2018

Date of Survey: JUNE 6, 2017

Signature and Seal of Professional Surveyor



JASON C. EDWARDS

Certificate Number 15269

District I
1625 N. French Drive, Hobbs, NM 88240
Phone: (575) 393-6161 Fax: (575) 393-0720

District II
811 S. First Street, Artesia, NM 88210
Phone: (575) 748-1263 Fax: (575) 748-9720

District III
1000 Rio Brazos Road, Aztec, NM 87410
Phone: (505) 334-6178 Fax: (505) 334-6170

District IV
1220 S. St. Francis Drive, Santa Fe, NM 87505
Phone: (505) 476-3460 Fax: (505) 476-3462

State of New Mexico
Energy, Minerals & Natural Resources Department

Form C-102
Revised August 1, 2011

Submit one copy to
Appropriate District Office

OIL CONSERVATION DIVISION

1220 South St. Francis Drive
Santa Fe, NM 87505

☐ AMENDED REPORT

As Drilled

WELL LOCATION AND ACREAGE DEDICATION PLAT

*API Number 30-043-21320		*Pool Code 52860		*Pool Name RUSTY GALLUP OIL POOL	
*Property Code 322151		*Property Name S ESCAVADA UNIT		*Well Number 353H	
*GRID No. 3/2286		*Operator Name ENDURING RESOURCES, LLC		*Elevation 6776'	

10 Surface Location

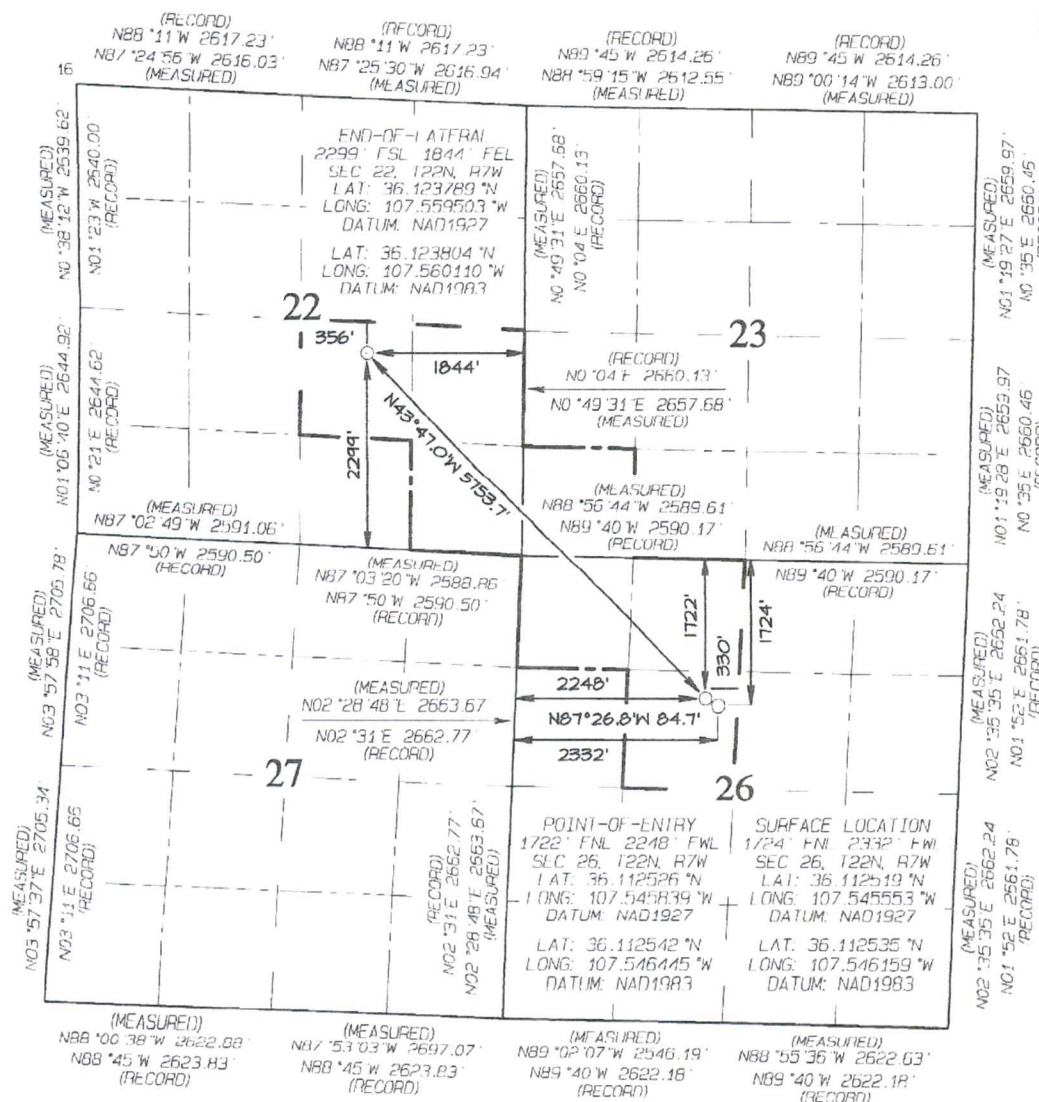
UL or lot no.	Section	Township	Range	Lot Ion	Feet from the	North/South line	Feet from the	East/West line	County
F	26	22N	7W		1724	NORTH	2332	WEST	SANDOVAL

11 Bottom Hole Location If Different From Surface

UL or lot no.	Section	Township	Range	Lot Ion	Feet from the	North/South line	Feet from the	East/West line	County
J	22	22N	7W		2299	SOUTH	1844	EAST	SANDOVAL

12 Dedicated Acres 280.00 SW/4 SW/4 - Section 23 N/2 SE/4, SE/4 SE/4 - Section 22 N/2 NW/4, SE/4 NW/4 - Section 26				13 Joint or Infill		14 Consolidation Code		15 Order No. R-14347	
--	--	--	--	--------------------	--	-----------------------	--	--------------------------------	--

NO ALLOWABLE WILL BE ASSIGNED
TO THIS COMPLETION UNTIL ALL
INTERESTS HAVE BEEN CONSOLIDATED
OR A NON-STANDARD UNIT HAS
BEEN APPROVED BY THE DIVISION



17 OPERATOR CERTIFICATION

I hereby certify that the information contained herein is true and complete to the best of my knowledge and belief, and that this organization either owns a working interest or unleased mineral interest in the land including the proposed bottom-hole location or has a right to drill this well at this location pursuant to a contract with an owner of such a mineral or working interest, or to a voluntary pooling agreement or a compulsory pooling order heretofore entered by the division.

10/4/18

Signature
Lacey Granillo
Printed Name
lgranillo@enduringresources.com
E-mail Address

18 SURVEYOR CERTIFICATION

I hereby certify that the well location shown on this plat was plotted from field notes of actual surveys made by me or under my supervision, and that the same is true and correct to the best of my belief.

Date Revised: OCTOBER 3, 2018
Date of Survey: JUNE 6, 2017

Signature and Seal of Professional Surveyor



JASON C. EDWARDS
Certificate Number 15269

District I
1625 N. French Drive, Hobbs, NM 88240
Phone: (575) 393-6161 Fax: (575) 393-0720

District II
811 S. First Street, Artesia, NM 88210
Phone: (575) 748-1283 Fax: (575) 748-9720

District III
1000 Rio Brazos Road, Aztec, NM 87410
Phone: (505) 334-6178 Fax: (505) 334-6170

District IV
1220 S. St. Francis Drive, Santa Fe, NM 87505
Phone: (505) 476-3460 Fax: (505) 476-3462

State of New Mexico
Energy, Minerals & Natural Resources Department

Form C-102
Revised August 1, 2011

Submit one copy to
Appropriate District Office

OIL CONSERVATION DIVISION
1220 South St. Francis Drive
Santa Fe, NM 87505

☐ AMENDED REPORT

WELL LOCATION AND ACREAGE DEDICATION PLAT

*API Number 30-043-21319		*Pool Code 52860	*Pool Name RUSTY GALLUP OIL POOL
*Property Code 322151	*Property Name S ESCAVADA UNIT		*Well Number 354H
*GRID No. 372286	*Operator Name Enduring Resources IV LLC		*Elevation 6776'

¹⁰ Surface Location

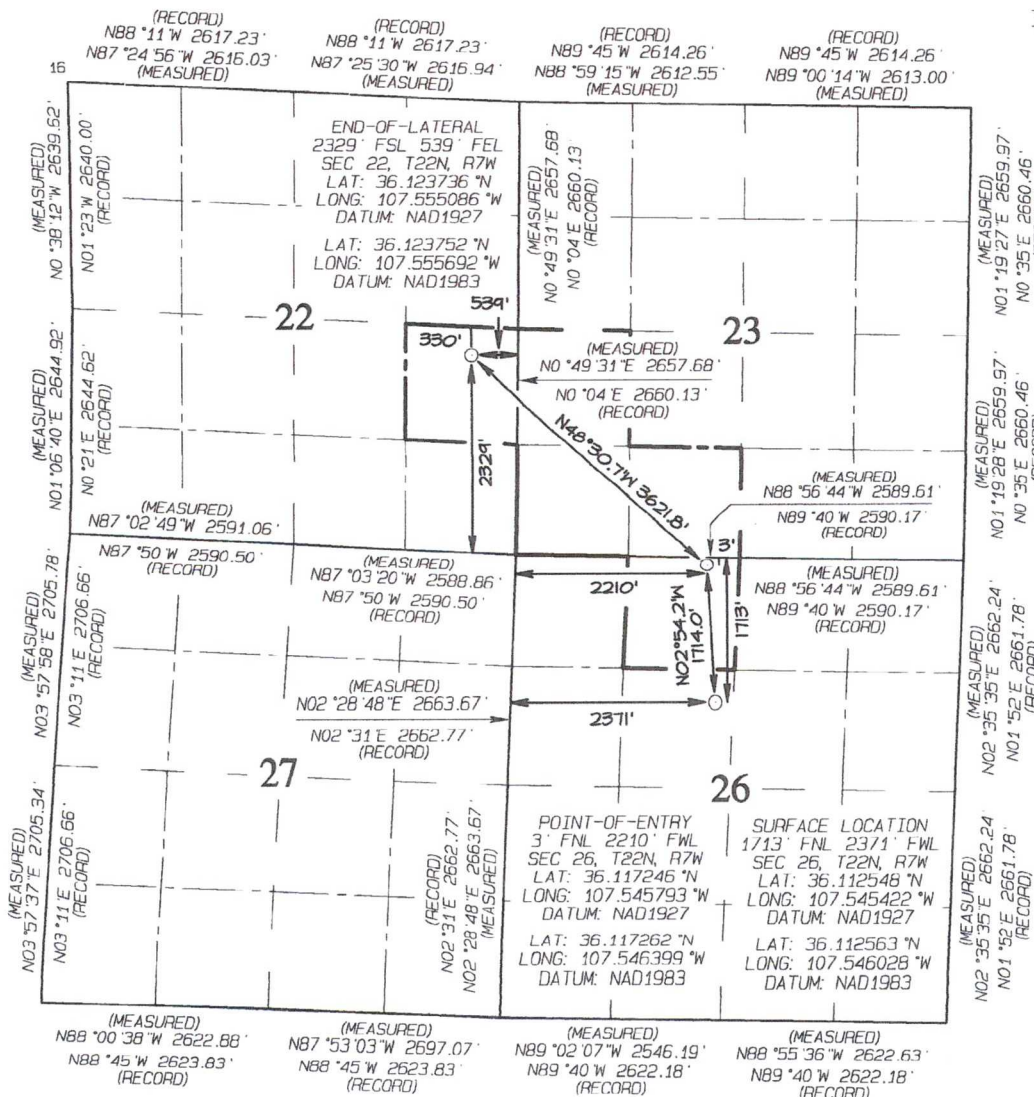
UL or lot no.	Section	Township	Range	Lot Idn	Feet from the	North/South line	Feet from the	East/West line	County
F	26	22N	7W		1713	NORTH	2371	WEST	SANDOVAL

¹¹ Bottom Hole Location If Different From Surface

UL or lot no.	Section	Township	Range	Lot Idn	Feet from the	North/South line	Feet from the	East/West line	County
I	22	22N	7W		2329	SOUTH	539	EAST	SANDOVAL

¹² Dedicated Acres 200.00 NE/4 SE/4 - Section 22 NW/4 SW/4, S/2 SW/4 - Section 23 NE/4 NW/4 - Section 26					¹³ Joint or Infill		¹⁴ Consolidation Code		¹⁵ Order No. R-14347	
--	--	--	--	--	-------------------------------	--	----------------------------------	--	------------------------------------	--

NO ALLOWABLE WILL BE ASSIGNED
TO THIS COMPLETION UNTIL ALL
INTERESTS HAVE BEEN CONSOLIDATED
OR A NON-STANDARD UNIT HAS
BEEN APPROVED BY THE DIVISION



¹⁷ OPERATOR CERTIFICATION

I hereby certify that the information contained herein is true and complete to the best of my knowledge and belief, and that this organization either owns a working interest or unleased mineral interest in the land including the proposed bottom-hole location or has a right to drill this well at this location pursuant to a contract with an owner of such a mineral or working interest, or to a voluntary pooling agreement or a compulsory pooling order heretofore entered by the division.

Signature _____ Date 10/4/18

Lacey Granillo

Printed Name
lgranillo@enduringresources.com

E-mail Address

¹⁸ SURVEYOR CERTIFICATION

I hereby certify that the well location shown on this plat was plotted from field notes of actual surveys made by me or under my supervision, and that the same is true and correct to the best of my belief.

Date Revised: FEBRUARY 21, 2018
Date of Survey: JUNE 6, 2017

Signature and Seal of Professional Surveyor



JASON C. EDWARDS

Certificate Number 15269

District I
 811 S. First Street, Artesia, NM 88210
 Phone: (505) 393-6161 Fax: (505) 393-0720

District II
 811 S. First Street, Artesia, NM 88210
 Phone: (505) 748-1283 Fax: (505) 748-9720

District III
 1000 Rio Brazos Road, Aztec, NM 87410
 Phone: (505) 334-6178 Fax: (505) 334-6170

District IV
 1220 S. St. Francis Drive, Santa Fe, NM 87505
 Phone: (505) 476-3460 Fax: (505) 476-3462

Submit one copy to
Appropriate District Office

OIL CONSERVATION DIVISION
1220 South St. Francis Drive
Santa Fe, NM 87505

☐ AMENDED REPORT

WELL LOCATION AND ACREAGE DEDICATION PLAT

¹ API Number 30-043-21349	² Pool Code 52860	³ Pool Name RUSTY GALLUP OIL POOL
⁴ Property Code 322151	⁵ Property Name S ESCAVADA UNIT	⁶ Well Number 347H
⁷ OGRID No. 372286	⁸ Operator Name ENDURING RESOURCES, LLC	⁹ Elevation 6749'

¹⁰ Surface Location

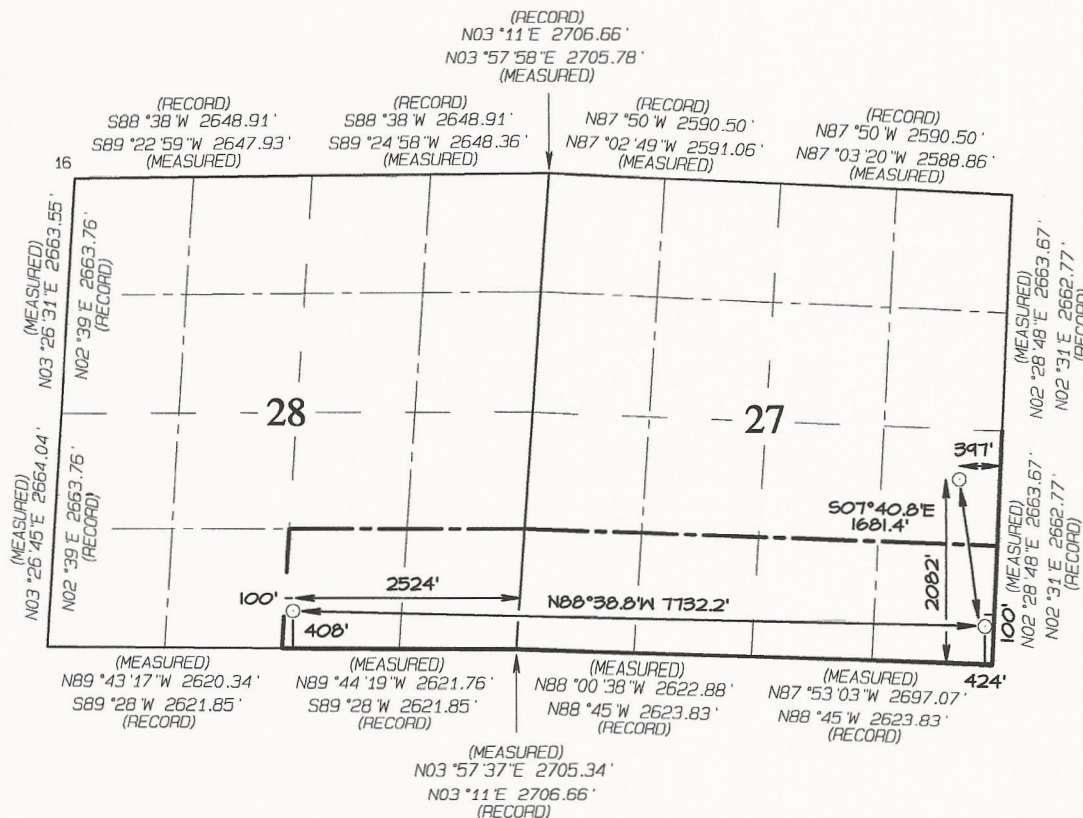
UL or lot no.	Section	Township	Range	Lot Idn	Feet from the	North/South line	Feet from the	East/West line	County
I	27	22N	7W		2082	SOUTH	397	EAST	SANDOVAL

¹¹ Bottom Hole Location If Different From Surface

UL or lot no.	Section	Township	Range	Lot Idn	Feet from the	North/South line	Feet from the	East/West line	County
0	28	22N	7W		408	SOUTH	2524	EAST	SANDOVAL

¹² Dedicated Acres 240.00	S/2 SE/4 - Section 28 S/2 S/2 - Section 27	¹³ Joint or Infill	¹⁴ Consolidation Code	¹⁵ Order No. R-14347
---	---	-------------------------------	----------------------------------	------------------------------------

NO ALLOWABLE WILL BE ASSIGNED TO THIS COMPLETION UNTIL ALL INTERESTS HAVE BEEN CONSOLIDATED OR A NON-STANDARD UNIT HAS BEEN APPROVED BY THE DIVISION



END-OF-LATERAL
408' FSL 2524' FEL
SEC 28, T22N, R7W
LAT: 36.104044 °N
LONG: 107.580272 °W
DATUM: NAD1927

LAT: 36.104060 °N
LONG: 107.580879 °W
DATUM: NAD1983

POINT-OF-ENTRY
424' FSL 100' FEL
SEC 27, T22N, R7W
LAT: 36.103830 °N
LONG: 107.554103 °W
DATUM: NAD1927

LAT: 36.103846 °N
LONG: 107.554709 °W
DATUM: NAD1983

SURFACE LOCATION
2082' FSL 397' FEL
SEC 27, T22N, R7W
LAT: 36.108399 °N
LONG: 107.554939 °W
DATUM: NAD1927

LAT: 36.108414 °N
LONG: 107.555545 °W
DATUM: NAD1983

17 OPERATOR CERTIFICATION

I hereby certify that the information contained herein is true and complete to the best of my knowledge and belief, and that this organization either owns a working interest or unleased mineral interest in the land including the proposed bottom-hole location or has a right to drill this well at this location pursuant to a contractual agreement with an owner of a mineral or working interest, or to a voluntary pooling agreement or a compulsory pooling order heretofore entered by the division.

Theresa Hu 10/29/21
Signature Date

Heather Huntington

Printed Name

hhuntington@enduringresources.com

E-mail Address

18 SURVEYOR CERTIFICATION

I hereby certify that the well location shown on this plat was plotted from field notes of actual surveys made by me or under my supervision, and that the same is true and correct to the best of my belief.

Date Revised: FEBRUARY 27, 2020
Date of Survey: MAY 1, 2017

Signature and Seal of Professional Surveyor



JASON C. EDWARDS

Certificate Number 15269

District I
 French Aztec Hobbes, NM 88240
 Phone: (575) 393-6161 Fax: (575) 393-0720
 District II
 811 S. First Street, Artesia, NM 88210
 Phone: (575) 748-1283 Fax: (575) 748-9720
 District III
 1000 Rio Brazos Road, Aztec, NM 87410
 Phone: (505) 334-6178 Fax: (505) 334-6170
 District IV
 1220 S. St. Francis Drive, Santa Fe, NM 87505
 Phone: (505) 476-3460 Fax: (505) 476-3462

Submit one copy to
Appropriate District Office

OIL CONSERVATION DIVISION
1220 South St. Francis Drive
Santa Fe, NM 87505

☐ AMENDED REPORT

WELL LOCATION AND ACREAGE DEDICATION PLAT

¹ API Number 30-043-21318		² Pool Code 52860	³ Pool Name RUSTY GALLUP OIL POOL	
⁴ Property Code 322151	⁵ Property Name S ESCAVADA UNIT			⁶ Well Number 350H
⁷ GRID No. 372286	⁸ Operator Name ENDURING RESOURCES, LLC			⁹ Elevation 6749'

¹⁰ Surface Location

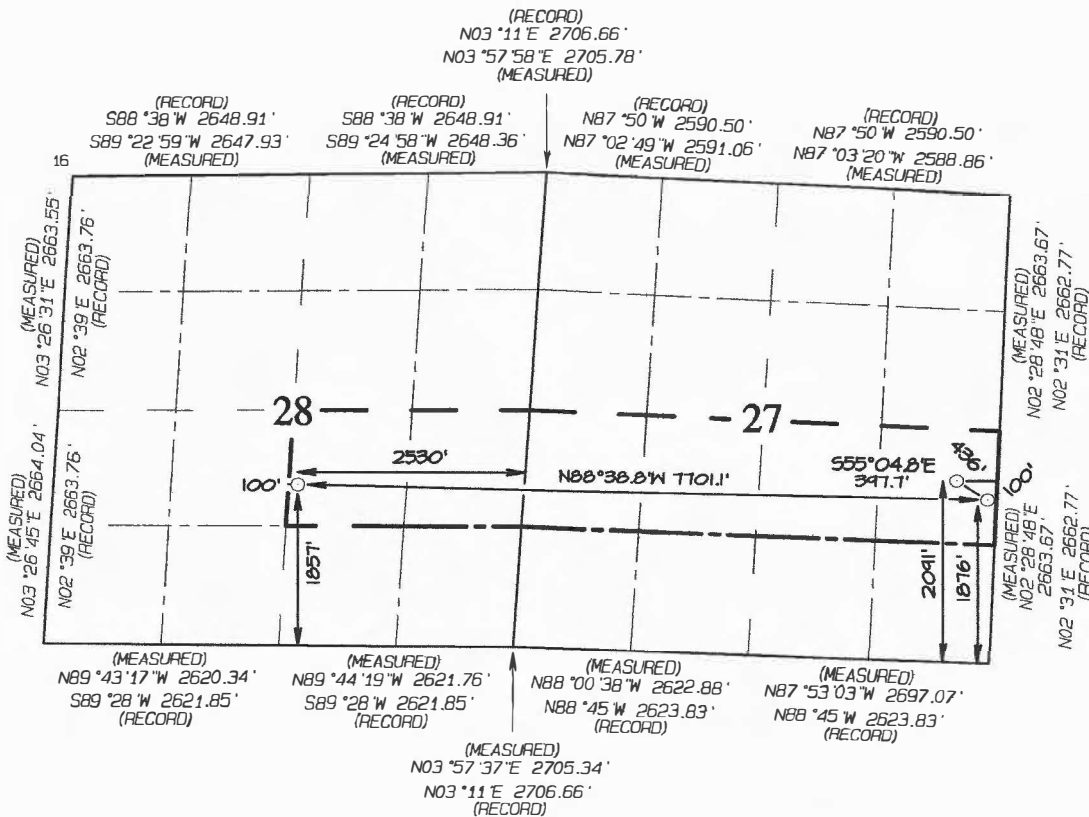
UL or lot no.	Section	Township	Range	Lot Idn	Feet from the	North/South line	Feet from the	East/West line	County
I	27	22N	7W		2091	SOUTH	436	EAST	SANDOVAL

¹¹ Bottom Hole Location If Different From Surface

UL or lot no.	Section	Township	Range	Lot Idn	Feet from the	North/South line	Feet from the	East/West line	County
J	28	22N	7W		1857	SOUTH	2530	EAST	SANDOVAL

¹² Dedicated Acres 240.00	N/2 SE/4 - Section 28 N/2 S/2 - Section 27	¹³ Joint or Infill	¹⁴ Consolidation Code	¹⁵ Order No. R-14347
---	---	-------------------------------	----------------------------------	------------------------------------

NO ALLOWABLE WILL BE ASSIGNED TO THIS COMPLETION UNTIL ALL INTERESTS HAVE BEEN CONSOLIDATED OR A NON-STANDARD UNIT HAS BEEN APPROVED BY THE DIVISION



17 OPERATOR CERTIFICATION

I hereby certify that the information contained herein is true and complete to the best of my knowledge and belief, and that this organization either owns a working interest or unleased mineral interest in the land including the proposed bottom-hole location or has a right to drill to this well at this location pursuant to a contract with the owner of such a mineral or working interest, or to a voluntary pooling agreement or a compulsory pooling order heretofore entered by the division.


 10/29/21
 Signature Date

Heather Huntington

Printed Name
hhuntington@enduringresources.com

E-mail Address

¹⁸ SURVEYOR CERTIFICATION

I hereby certify that the well location shown on this plat was plotted from field notes of actual surveys made by me or under my supervision, and that the same is true and correct to the best of my belief.

Date Revised: FEBRUARY 27, 2020

Date of Survey: MAY 1, 2017

Signature and Seal of Professional Surveyor



JASON C. EDWARDS

Certificate Number 15269

Submit one copy to
Appropriate District Office

District I
1000 Rio Brazos Road, Aztec, NM 87410
Phone: (505) 334-6178 Fax: (505) 334-6170

District II
811 S. First Street, Artesia, NM 88210
Phone: (505) 748-1283 Fax: (505) 748-9720

District III
1000 Rio Brazos Road, Aztec, NM 87410
Phone: (505) 334-6178 Fax: (505) 334-6170

District IV
1220 S. St. Francis Drive, Santa Fe, NM 87505
Phone: (505) 476-3460 Fax: (505) 476-3462

OIL CONSERVATION DIVISION

1220 South St. Francis Drive
Santa Fe, NM 87505

☐ AMENDED REPORT

WELL LOCATION AND ACREAGE DEDICATION PLAT

¹ API Number 30-043-21317	² Pool Code 52860	³ Pool Name RUSTY GALLUP OIL POOL
⁴ Property Code 322151	⁵ Property Name S ESCAVADA UNIT	⁶ Well Number 351H
⁷ GRID No. 372286	⁸ Operator Name ENDURING RESOURCES, LLC	⁹ Elevation 6749'

¹⁰ Surface Location

UL or lot no.	Section	Township	Range	Lot Idn	Feet from the	North/South line	Feet from the	East/West line	County
I	27	22N	7W		2087	SOUTH	417	EAST	SANDOVAL

¹¹ Bottom Hole Location If Different From Surface

UL or lot no.	Section	Township	Range	Lot Idn	Feet from the	North/South line	Feet from the	East/West line	County
L	22	22N	7W		1520	SOUTH	250	WEST	SANDOVAL

¹² Dedicated Acres 320.00 NE/4 NW/4, W/2 NE/4 SE/4 NE/4, NE/4 SE/4 - Section 27 W/2 SW/4, SE/4 SW/4 - Section 22	¹³ Joint or Infill	¹⁴ Consolidation Code	¹⁵ Order No. R-14347
--	-------------------------------	----------------------------------	------------------------------------

NO ALLOWABLE WILL BE ASSIGNED
TO THIS COMPLETION UNTIL ALL
INTERESTS HAVE BEEN CONSOLIDATED
OR A NON-STANDARD UNIT HAS
BEEN APPROVED BY THE DIVISION

END-OF-LATERAL
1520' FSL 250' FWL
SEC 22, T22N, R7W
LAT: 36.121970°N
LONG: 107.569915°W
DATUM: NAD1927

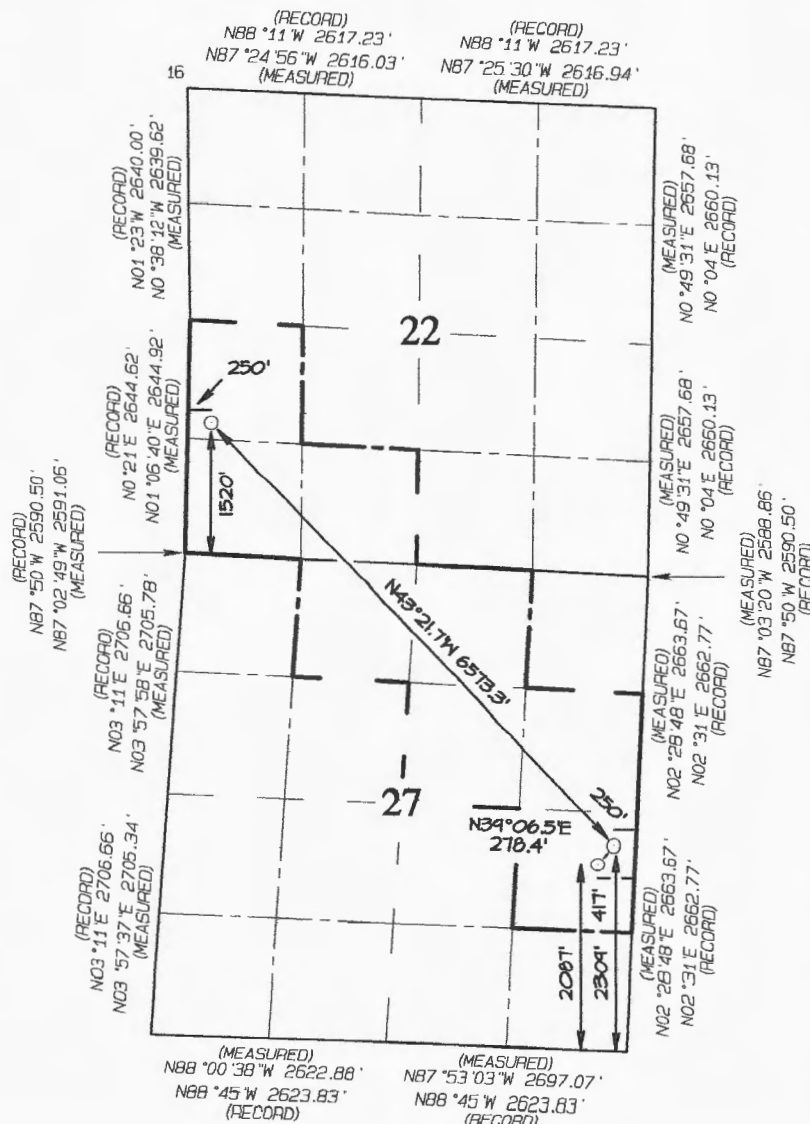
LAT: 36.121985°N
LONG: 107.570522°W
DATUM: NAD1983

POINT-OF-ENTRY
2309' FSL 250' FEL
SEC 27, T22N, R7W
LAT: 36.109012°N
LONG: 107.554420°W
DATUM: NAD1927

LAT: 36.109027°N
LONG: 107.555026°W
DATUM: NAD1983

SURFACE LOCATION
2087' FSL 417' FEL
SEC 27, T22N, R7W
LAT: 36.108412°N
LONG: 107.555004°W
DATUM: NAD1927

LAT: 36.108428°N
LONG: 107.555511°W
DATUM: NAD1983

¹⁷ OPERATOR CERTIFICATION

I hereby certify that the information contained herein is true and complete to the best of my knowledge and belief, and that this organization either owns a working interest or unleased mineral interest in the land including the proposed bottom-hole location or has a right to drill this well at this location pursuant to a contract with an owner of such a mineral or working interest, or to a voluntary pooling agreement or a compulsory pooling order heretofore entered by the division.

Signature: Heather Huntington Date: 10/29/21

Printed Name: hhuntington@enduringresources.com
E-mail Address:

¹⁸ SURVEYOR CERTIFICATION

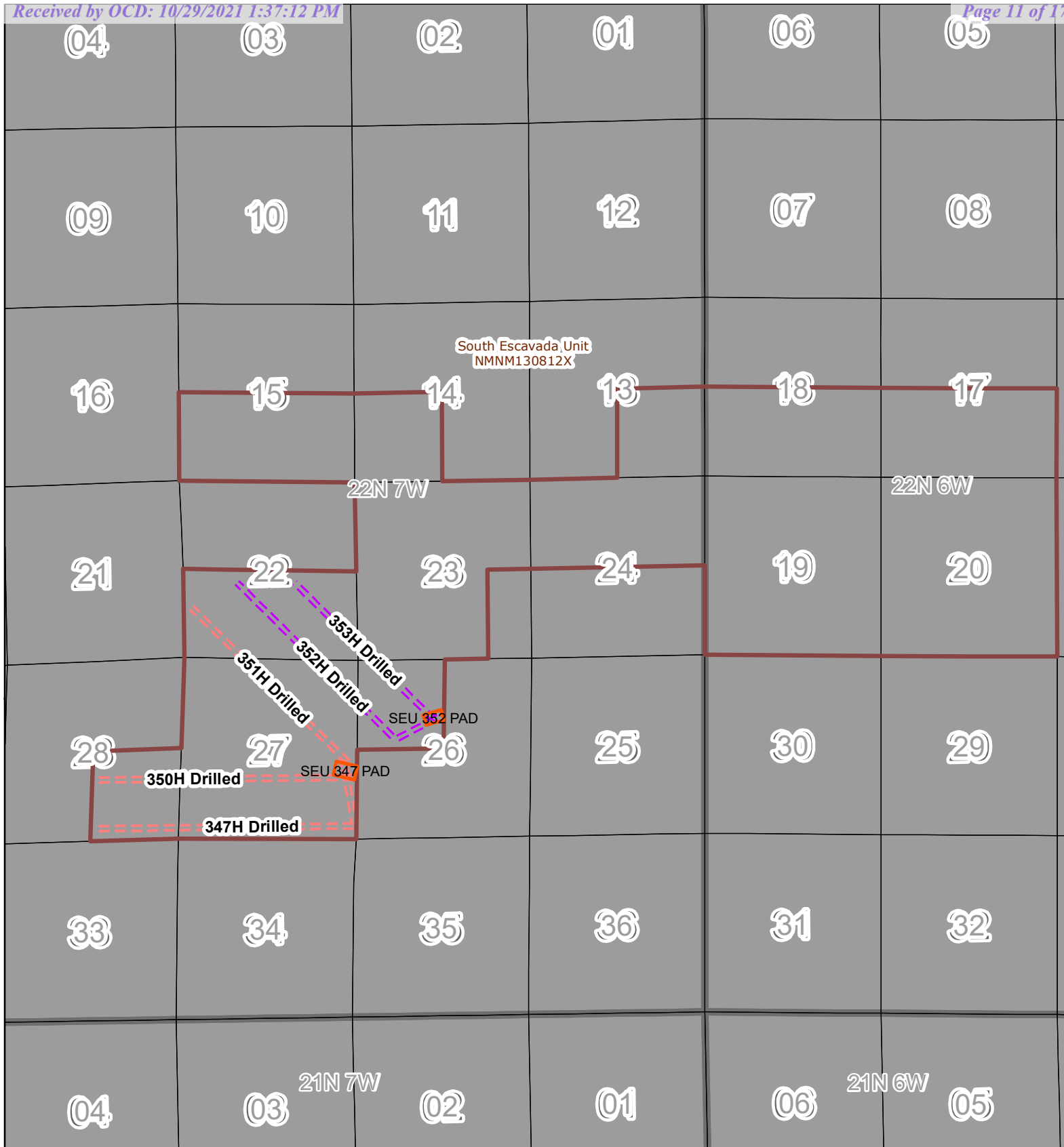
I hereby certify that the well location shown on this plat was plotted from field notes of actual surveys made by me or under my supervision, and that the same is true and correct to the best of my belief.

Date Revised: MARCH 9, 2020
Date of Survey: MAY 1, 2017

Signature and Seal of Professional Surveyor



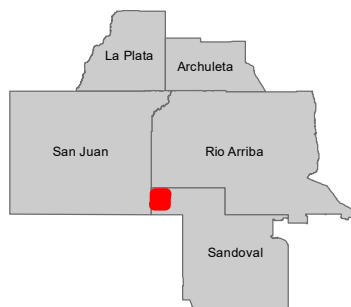
JASON C. EDWARDS
Certificate Number 15269



SEU 352H Lease Plat Map

- ==== 2018, Lower
- ==== 2020, Lower
- PADS
- Unit Boundary
- Section
- Township

Released to Imaging: 11/18/2021 2:09:56 PM 2



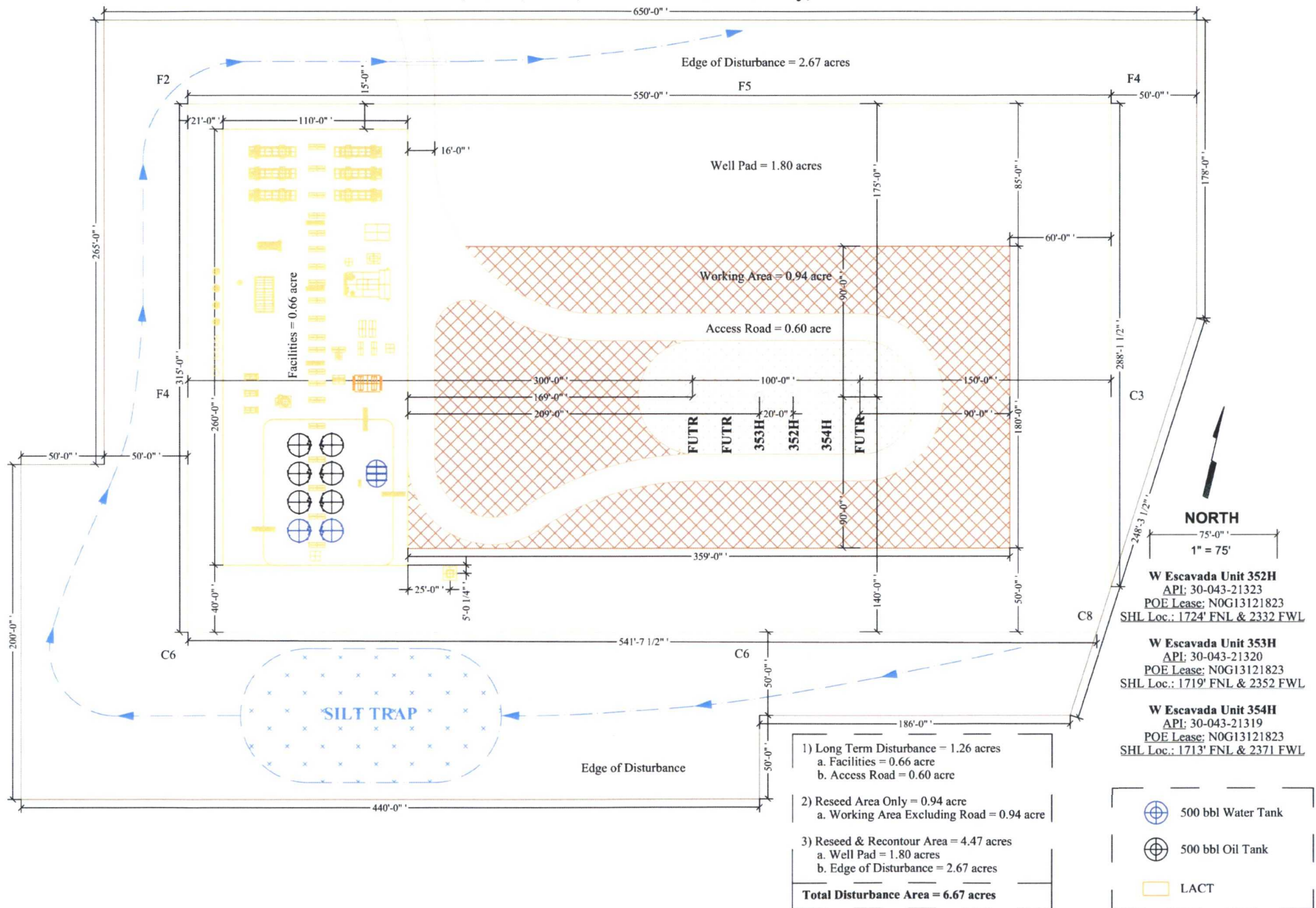
**ENDURING
RESOURCES, LLC**

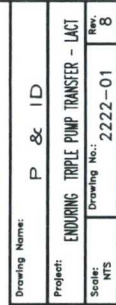
Data Source Statement:
BLM-FFO, Enduring Resources GIS, ESRI Inc.,
NCE Surveys, USGS

Author: drogers

Date: 10/26/2021

Enduring Resources IV, LLC's S Escavada Unit 352H Well Pad Facility Diagram **Section 26, T22N, R7W, NMPM Sandoval County, New Mexico**





THIS DOCUMENT, WHETHER CONTAINING PATENTABLE OR NONPATENTABLE SUBJECT MATTER EMBODIES THE PROPRIETARY AND CONFIDENTIAL INFORMATION OF HENRY PRODUCTION INC. AND PUMPS AND SERVICE. IT IS LOANED IN CONFIDENCE WITH THE UNDERSTANDING THAT IT WILL NOT BE REPRODUCED, USED OR DISCLOSED FOR ANY PURPOSE EXCEPT THE LIMITED PURPOSE FOR WHICH IT IS LOANED. THIS DOCUMENT SHALL BE RETURNED TO HENRY PRODUCTION INC. OR PUMPS AND SERVICE UPON DEMAND.

From: [Webb, Marshall](#)
To: [Mark Lokshin](#); [Spitz, John O.](#); [Heather Huntington](#)
Cc: [White, Randy P.](#); [Howe, Duane](#); [Davis, Bruce D.](#); [Giron, Paul A.](#); [Lee, Cameron N.](#); [Milton, Brandon H.](#); [Marquez, Monica G.](#); [Gomez, Crystal C.](#)
Subject: RE: [EXTERNAL] FW: Permission from Marathon for LACT unit revision on S Escavada Unit 352H
Date: Friday, October 29, 2021 10:38:04 AM

All,

Thank you for everyone's time today.

I approves of the unit revisions on behalf of MPLX.

Let me know if you have any other questions.

Thanks,

Marshall Webb
West G&P Field Measurement Manager
970-216-2422
mwebb@marathonpetroleum.com



From: Mark Lokshin <MLokshin@enduringresources.com>
Sent: Thursday, October 28, 2021 2:48 PM
To: Webb, Marshall <MWebb@marathonpetroleum.com>; Spitz, John O. <JOSpitz@Marathonpetroleum.com>; Heather Huntington <Hhuntington@enduringresources.com>
Cc: White, Randy P. <RPWhite@Marathonpetroleum.com>; Howe, Duane <DDHowe@Marathonpetroleum.com>; Davis, Bruce D. <BDDavis@Marathonpetroleum.com>; Giron, Paul A. <PGiron@Marathonpetroleum.com>; Lee, Cameron N. <CLee2@Marathonpetroleum.com>; Milton, Brandon H. <BHMilton@Marathonpetroleum.com>; Marquez, Monica G. <MGMarquez@Marathonpetroleum.com>; Gomez, Crystal C. <CGomez2@marathonpetroleum.com>
Subject: RE: [EXTERNAL] FW: Permission from Marathon for LACT unit revision on S Escavada Unit 352H

Marshall

This approval is really just a formality for NMOCD to make sure that we the operator are communicating with the transporter. This is the last item we need to receive our approval from NMOCD. Please advise if you have any further questions in order to approve.

Thank you
Mark

From: Heather Huntington <HHuntington@enduringresources.com>
Sent: Tuesday, October 26, 2021 7:57 AM
To: Mark Lokshin <MLokshin@enduringresources.com>
Subject: Permission from Marathon for LACT unit revision on S Escavada Unit 352H

Mark,

Will you please reach out to Marathon and get permission for this LACT unit amendment and forward me the response so I can include in required application documents?

Enduring Resources IV, LLC's (Enduring) is currently approved through NMOCD for the transfer of the following wells through the S Escavada 352H Pad Pipeline Transfer LACT Unit C-106 LACT

- **S ESCAVADA UNIT 352H / API # 30-043-21323/ UNIT F Sec. 26, T22N, R7W, NMPM**
- **S ESCAVADA UNIT 353H / API # 30-043-21320/ UNIT F Sec. 26, T22N, R7W, NMPM**
- **S ESCAVADA UNIT 354H / API # 30-043-21319/ UNIT F Sec. 26, T22N, R7W, NMPM**
- **S ESCAVADA UNIT 359H/ API # 30-043-21329/ UNIT A Sec. 30, T22N, R6W, NMPM**
- **S ESCAVADA UNIT 360H/ API # 30-043-21330/ UNIT A Sec. 30, T22N, R7W, NMPM**

Enduring Resources is requesting to amend the current S Escavada 352H Pad Pipeline Transfer LACT Unit to remove the two wells that are now approved through the NMOCD through the S Escavada 359H Pad Pipeline Transfer LACT Unit.

- **S ESCAVADA UNIT 359H/ API # 30-043-21329/ UNIT A Sec. 30, T22N, R6W, NMPM**
- **S ESCAVADA UNIT 360H/ API # 30-043-21330/ UNIT A Sec. 30, T22N, R7W, NMPM**

Enduring Resources will add the three wells below to the S Escavada 352H Pad Pipeline Transfer LACT Unit.

- **S ESCAVADA UNIT 347H/ API # 30-043-21349/ UNIT I Sec. 27, T22N, R7W, NMPM**
- **S ESCAVADA UNIT 350H/ API # 30-043-21318/ UNIT I Sec. 27, T22N, R7W, NMPM**
- **S ESCAVADA UNIT 351H/ API # 30-043-21317/ UNIT I Sec. 27, T22N, R7W, NMPM**

According to NMOCD regulations Enduring Resources needs the approval from the transporter for this change, which in this case is Marathon Oil. Custody transfer will be at this LACT Unit and will be the official measurement point for sales with a Coriolis check meter downstream at tie-in for verification and pipeline monitoring. Pipeline Transfer LACT equipment for the below listed wells will be located on Enduring's S Escavada Unit 352H pad. LACT will be proved per regulatory requirements.

S ESCAVADA UNIT 352H/353H/354H/347H/350H/351H PIPELINE LACT UNIT:
WELLS TO BE SERVED BY PIPELINE LACT UNIT:

- **S ESCAVADA UNIT 352H / API # 30-043-21323/ UNIT F Sec. 26, T22N, R7W, NMPM**
- **S ESCAVADA UNIT 353H / API # 30-043-21320/ UNIT F Sec. 26, T22N, R7W, NMPM**
- **S ESCAVADA UNIT 354H / API # 30-043-21319/ UNIT F Sec. 26, T22N, R7W, NMPM**
- **S ESCAVADA UNIT 347H/ API # 30-043-21349/ UNIT I Sec. 27, T22N, R7W, NMPM**

- S ESCAVADA UNIT 350H/ API # 30-043-21318/ UNIT I Sec. 27, T22N, R7W, NMPM
- S ESCAVADA UNIT 351H/ API # 30-043-21317/ UNIT I Sec. 27, T22N, R7W, NMPM

Heather Huntington
Enduring Resources Permitting Technician
505-636-9751

District I
1625 N. French Dr., Hobbs, NM 88240
Phone:(575) 393-6161 Fax:(575) 393-0720

District II
811 S. First St., Artesia, NM 88210
Phone:(575) 748-1283 Fax:(575) 748-9720

District III
1000 Rio Brazos Rd., Aztec, NM 87410
Phone:(505) 334-6178 Fax:(505) 334-6170

District IV
1220 S. St Francis Dr., Santa Fe, NM 87505
Phone:(505) 476-3470 Fax:(505) 476-3462

State of New Mexico
Energy, Minerals and Natural Resources
Oil Conservation Division
1220 S. St Francis Dr.
Santa Fe, NM 87505

CONDITIONS

Action 58661

CONDITIONS

Operator: ENDURING RESOURCES, LLC 6300 S Syracuse Way, Suite 525 Centennial, CO 80111	OGRID: 372286
	Action Number: 58661
	Action Type: [C-106] NOI Utilize ACTE (C-106)

CONDITIONS

Created By	Condition	Condition Date
dmccclure	C106-899-A supersedes C106-899	11/18/2021