

Submit 1 Copy To Appropriate District Office
 District I - (575) 393-6161
 1625 N. French Dr., Hobbs, NM 88240
 District II - (575) 748-1283
 811 S. First St., Artesia, NM 88210
 District III - (505) 334-6178
 1000 Rio Brazos Rd., Aztec, NM 87410
 District IV - (505) 476-3460
 1220 S. St. Francis Dr., Santa Fe, NM 87505

State of New Mexico
 Energy, Minerals and Natural Resources

Form C-103
 Revised July 18, 2013

OIL CONSERVATION DIVISION
 1220 South St. Francis Dr.
 Santa Fe, NM 87505

WELL API NO. 30-015- 31335
5. Indicate Type of Lease STATE <input checked="" type="checkbox"/> FEE <input type="checkbox"/>
6. State Oil & Gas Lease No.
7. Lease Name or Unit Agreement Name Remuda Basin state
8. Well Number #5Q
9. OGRID Number 005380
10. Pool name or Wildcat Nash Draw Delaware

SUNDRY NOTICES AND REPORTS ON WELLS
 (DO NOT USE THIS FORM FOR PROPOSALS TO DRILL OR TO DEEPEN OR PLUG BACK TO A DIFFERENT RESERVOIR. USE "APPLICATION FOR PERMIT" (FORM C-101) FOR SUCH PROPOSALS.)

1. Type of Well: Oil Well ☐ Gas Well ☐ Other

2. Name of Operator
XTO Energy, Inc.

3. Address of Operator
6401 Holiday Hill Rd bldg #5, Midland TX 79707

4. Well Location Unit Letter <u>D</u> : <u>330</u> feet from the <u>North</u> line and <u>990</u> feet from the West line Section <u>19</u> Township <u>23s</u> Range <u>30E</u> NMPM County <u>Eddy</u>	11. Elevation (Show whether DR, RKB, RT, GR, etc.) 3025'
--	---

12. Check Appropriate Box to Indicate Nature of Notice, Report or Other Data

NOTICE OF INTENTION TO:

PERFORM REMEDIAL WORK ☐ PLUG AND ABANDON X ☒
 TEMPORARILY ABANDON ☐ CHANGE PLANS ☐
 PULL OR ALTER CASING ☐ MULTIPLE COMPL ☐
 DOWNHOLE COMMINGLE ☐
 CLOSED-LOOP SYSTEM ☐
 OTHER: ☐

SUBSEQUENT REPORT OF:

REMEDIAL WORK ☐ ALTERING CASING ☐
 COMMENCE DRILLING OPNS. ☐ P AND A ☒
 CASING/CEMENT JOB ☐
 OTHER: ☐

13. Describe proposed or completed operations. (Clearly state all pertinent details, and give pertinent dates, including estimated date of starting any proposed work). SEE RULE 19.15.7.14 NMAC. For Multiple Completions: Attach wellbore diagram of proposed completion or recompletion.

* 11/4/21- move rig and equipment and containment's to new location, move in location and spot rig and equipment wait for crane to remove pump jack head, Rig up rig & equipment, check well psi, 0psi on tubing, 200psi on casing, 0psi on inter, 0psi on surface, blow down well to pit, change out tools on blocks to pull rods & rig up work floor & rod tongs. shut in well, close out meeting, crew to hotel.

* 11/5/21-Check well psi, 0psi on tubing, 50psi on casing, 0psi on inter, 0psi on surface, blow down well to steel pit, pump 40BBLS down casing to kill well, unseat rod pump & start laying down rods, 1- polish rod, 2-8' 7/8 subs, 1- 4' 7/8 sub, 130- 7/8, 138- 3/4, 8- sinker bars, 1- 24' pump, change out tools on blocks to pull tubing, rig down work floor, NDWH, unset TAC, land tubing hanger, NU BOP, rig up work floor and tubing tongs, pressure test blind & pipe rams 250psi Low 1,000psi High, tested good,

* 11/8/21-TOH with tubing standing back in derrick with 216JTS 1TAC 8JTS, Rig up wireline, pressure test lubricator to 500psi for 5mins. tested good, RIH with GRJB to PBD @7,030ft, POOH and RIH w/ CIBP set @6,890ft. RIG down wireline

* 11/9/21-TIH w/ tubing tag CIBP with 220.5 JTS, 220 JTS in hole EOT @6,876.8ft circulate salt mud with 150BBLS, 37sks of mud, pressure test casing @500psi for 5 mins. tested Good. spot 25sks class C cement, FOF 246.90, CTC @6,629.9, MIX 3.75BBLS, DISP 38.45BBLS, PUH L.D 113JTS. WITH 107JTS in hole EOT @3,346.68FT.

* 11/10/21- Rig up wireline, pressure test lubricator @500psi for 5mins, RIH Perf @3,409ft & RIH TAG TOC @6,582FT. TOH rig down wireline, EST.INJ. Rate. NO RATE. TIH with 4JTS, 111JTS in hole EOT @3,467.64FT, Spot 140sks FOF 1,382.67, CTC 2,084.97, MIX 21BBLS, DISP 12.09BBLS, L.D 45JTS, 66JTS in hole EOT @2,061.84FT, spot 140sks, FOF 1,382.67, CTC 679FT. MIX 21BBLS, DISP 3.93BBLS, L.D 45JTS, S.B. 7STDS, W/7JTS in hole, WOC, rig up wireline RIH TAG TOC @682FT, PUH perf @420FT, rig down wireline, EST.INJ. Rate. NO RATE

* 11/11/21-TOH L.D tubing 7JTS, rig down work floor & ND BOP, rig up work floor, TIH W/ 14JTS in derrick, pick up 1JT EOT @476FT, SPOT 48SKS to surface, MIX 7.2BBLS, POOH L.D 15JTS, rig down work floor, top off cement, rig down rig & equipment Cut WH and set PA Marker

Spud Date:

Rig Release Date:

Approved for plugging of well bore only. Liability under bond is retained pending Location cleanup & receipt of C-103Q (Subsequent Report of Well Plugging) which may be found at OCD Web Page, OCD Permitting @ www.emnrd.state.nm.us

I hereby certify that the information above is true and complete to the best of my knowledge and belief.

SIGNATURE Cassie Evans TITLE Regulatory Analyst DATE 10-11-21

Type or print name Cassie Evans E-mail address: cassie.evans@exxonmobil.com PHONE: 432.218.3671
For State Use Only

APPROVED BY: [Signature] TITLE Staff Manager DATE 12/6/2021
 Conditions of Approval (if any):



Wellbore Diagram - RRC

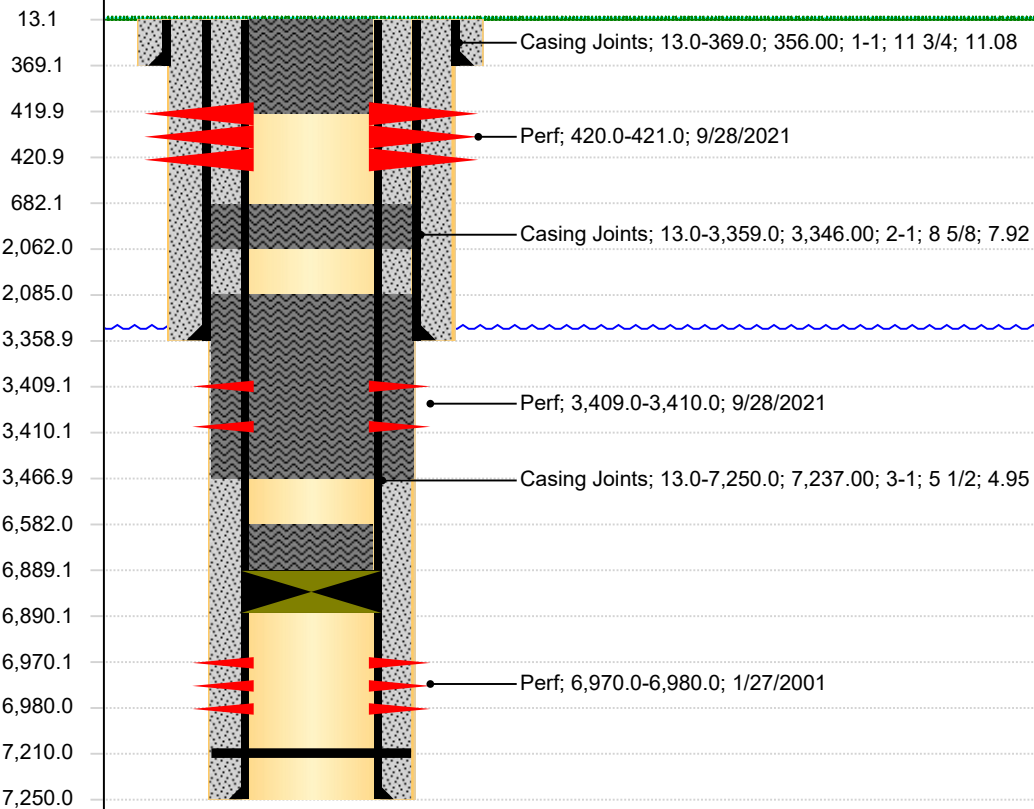
Well Name: REMUDA BASIN STATE 005Q

API/UWI 3001531335	SAP Cost Center ID 1137391001	Permit Number	State/Province New Mexico	County Eddy		
Surface Location T23S-R30E-S19		Spud Date 12/27/2000 00:00	Original KB Elevation (ft) 3,038.00	Ground Elevation (ft) 3,025.00	KB-Ground Distance (ft) 13.00	Surface Casing Flange Elevatio...
Lease Remuda Basin State						

Vertical, Original Hole, 11/26/2021 2:00:08 PM

MD (ftKB)

Vertical schematic (actual)



Perforations

Top (ftKB)	Btm (ftKB)	Current Status
420.0	421.0	
3,409.0	3,410.0	
6,970.0	6,980.0	

District I

1625 N. French Dr., Hobbs, NM 88240
Phone:(575) 393-6161 Fax:(575) 393-0720

District II

811 S. First St., Artesia, NM 88210
Phone:(575) 748-1283 Fax:(575) 748-9720

District III

1000 Rio Brazos Rd., Aztec, NM 87410
Phone:(505) 334-6178 Fax:(505) 334-6170

District IV

1220 S. St Francis Dr., Santa Fe, NM 87505
Phone:(505) 476-3470 Fax:(505) 476-3462

State of New Mexico
Energy, Minerals and Natural Resources
Oil Conservation Division
1220 S. St Francis Dr.
Santa Fe, NM 87505

CONDITIONS

Action 64295

CONDITIONS

Operator: XTO ENERGY, INC 6401 Holiday Hill Road Midland, TX 79707	OGRID: 5380
	Action Number: 64295
	Action Type: [C-103] Sub. Plugging (C-103P)

CONDITIONS

Created By	Condition	Condition Date
gcordero	None	12/6/2021