

Submit a Copy To Appropriate District Office  
 District I – (575) 393-6161  
 1625 N. French Dr., Hobbs, NM 88240  
 District II – (575) 748-1283  
 811 S. First St., Artesia, NM 88210  
 District III – (505) 334-6178  
 1000 Rio Brazos Rd., Aztec, NM 87410  
 District IV – (505) 476-3460  
 1220 S. St. Francis Dr., Santa Fe, NM 87505

State of New Mexico  
 Energy, Minerals and Natural Resources

Form C-103  
 Revised July 18, 2013

OIL CONSERVATION DIVISION  
 1220 South St. Francis Dr.  
 Santa Fe, NM 87505

WELL API NO. 30-015-26709
5. Indicate Type of Lease STATE <input checked="" type="checkbox"/> FEE <input type="checkbox"/>
6. State Oil & Gas Lease No.
7. Lease Name or Unit Agreement Name Candie 13
8. Well Number 001
9. OGRID Number 4323
10. Pool name or Wildcat Loving: Brushy Canyon, East [40350] Loving: Delaware, East [40370]
4. Well Location Unit Letter <u>M</u> : <u>660</u> feet from the <u>SOUTH</u> line and <u>560</u> feet from the <u>WEST</u> line Section <u>13</u> Township <u>23S</u> Range <u>28E</u> NMPM County <u>EDDY</u>
11. Elevation (Show whether DR, RKB, RT, GR, etc.)

12. Check Appropriate Box to Indicate Nature of Notice, Report or Other Data

NOTICE OF INTENTION TO:	SUBSEQUENT REPORT OF:
PERFORM REMEDIAL WORK <input type="checkbox"/>	REMEDIAL WORK <input type="checkbox"/>
TEMPORARILY ABANDON <input type="checkbox"/>	ALTERING CASING <input type="checkbox"/>
PULL OR ALTER CASING <input type="checkbox"/>	COMMENCE DRILLING OPNS. <input type="checkbox"/>
DOWNHOLE COMMINGLE <input type="checkbox"/>	P AND A <input checked="" type="checkbox"/>
CLOSED-LOOP SYSTEM <input type="checkbox"/>	CASING/CEMENT JOB <input type="checkbox"/>
OTHER: <input type="checkbox"/>	OTHER: <input type="checkbox"/>

13. Describe proposed or completed operations. (Clearly state all pertinent details, and give pertinent dates, including estimated date of starting any proposed work). SEE RULE 19.15.7.14 NMAC. For Multiple Completions: Attach wellbore diagram of proposed completion or recompletion.

12/13/2021: Lay down rods

12/14/2021: Kill well. Release TAC and pull tubing from wellbore. Trip in hole with workstring and tag at 5140' (confirmed with Long Vo). Pump 115 sacks Class C cement from 5140'.

12/15/2021: Pressure test cement, casing to 1000 psi - good. Tag TOC at 4147'. Run CBL from 4000'. Share results with Long Vo and adjust forward plan.

12/16/2021: Spot 28 sacks Class C cement from 3563' to 3287'. Perforate at 2590' [no injection - 1500 psi]. Pump 46 sacks Class C cement from 2647' to 2193'.

12/17/2021: Pressure test casing to 1000 psi - good. Perforate at 530' [no injection]. Tag at 2101'. Pump mud laden fluid. Pull up to 632' and spot 70 sacks Class C cement from 632' to surface. Confirmed with Long Vo.

Spud Date:

Rig Release Date:

Approved for plugging of well bore only. Liability under bond is retained pending Location cleanup & receipt of C-103Q (Subsequent Report of Well Plugging) which may be found at OCD Web Page, OCD Permitting @ www.emnrd.state.nm.us

I hereby certify that the information above is true and complete to the best of my knowledge and belief.

SIGNATURE Hayes Thibodeaux TITLE Engineer DATE 12/17/2021

Type or print name Hayes Thibodeaux E-mail address: Hayes.thibodeaux@chevron.com PHONE: 281-726-9683

**For State Use Only**

APPROVED BY: [Signature] TITLE Staff Manager DATE 12/20/2021  
 Conditions of Approval (if any):



Well Name CANDIE `13` 1		Field Name Carlsbad		Lease		Area Delaware Basin	
Business Unit Mid-Continent		County/ Parish EDDY		Global Metrics Region Lower 48		Surface UWI 3001526709	
Basic Well Data							
Current RKB Elevation 2,993.00, 1/28/2019		Original RKB Elevation (ft) 2,993.00		Latitude (°) 32° 17' 59.604" N		Longitude (°) 104° 2' 50.244" W	
Phases							
Actual Start Date		Actual End Date		Phase 1	Phase 2	Time Log Hrs (hr)	Percent Problem Time (%)
12/8/2021 12:00		12/8/2021 17:00		PREP	FAC	5.00	
12/13/2021 06:30		12/14/2021 16:15		ABAN	TBGPULL	19.75	
12/14/2021 16:15		12/17/2021 14:30		ABAN	CMTPLUG	34.25	23.36
				REST	FAC		

**Rpt # 1 , 12/8/2021**

## Operations Summary

Driving to location in Loving NM from White City NM, HSE meeting, location hazard hunt, wellhead pressure checks, dig plan review, location line sweep, unload equipment, blow down well, removed old plumbing, made up new assemblies, installed new risers, painted valves by color code, backfilled excavation, plenty of dirt work on this location, cleared brush, location is prepped, load/secured equipment.

## Rpt # 2 , 12/13/2021

## Operations Summary

Held jsa safety meeting. Check pressures on well and blow down. Bubble test surface for 15 minutes. Spot equipment. Rig up service unit. Pressure test tubing 1000 psi for 15 minutes, good. Pump kill well and continue pumping well. Rig up floor and tools. Pull lay down rods 1 PR, 87 7/8, 92 3/4, 8 kbars, 1 ST bar and pump. Rig down tools and floor. Break bolts on well head and tried to break off b110 flange and stopped after attempting, worried about stripping threads. Flanged up well. Shut in and secure well held debris meeting.

## Rpt # 3 , 12/14/2021

## Operations Summary

Held jsa safety meeting. Check pressure on well and blow down, do bubble test on surface. Pump kill well and continue pumping on well. Nipple down well head. Nipple up bop. Pressure test bop 250 low and 1000 high for 15 minutes each. Rig up bird bath, floor and tools. Release tubing anchor and stand back tubing. Pull out 152 jts 2 7/8, tac, mud anchor. Trip in hole and tag 167 jts and 22 ft 2 7/8 depth 5140. Talked with Hayes Thibodeaux (chev-eng) and Long Vo (NM-eng). Pump and load hole. Pump 115 sacks class C 1.32 yield at 14.8 lbs with 2% calcium and displace 23 bls, toc at 4000. Pull stand back 45 stands. Reverse out. Shut in and secure well, held debrief meeting.

## Rpt # 4 , 12/15/2021

## Operations Summary

Held jsa safety meeting. Check pressures on well and blow down. Bubble test surface, good. Pressure test casing 1000 psi for 15 minutes. Trip in tubing and tag 134 jts and 7 ft 2 7/8, depth 4147. Pull stand back tubing 51 stands. Had to shut down due to issues on rig. Finish tripping out the rest of tubing. Rig up wire line. Run CMBL from 4000-0 then pull out wire line and rig down. Trip in tubing 134 jts 2 7/8 depth. Shut in and secure well, held debrief.

## Rpt # 5 , 12/16/2021

### Operations Summary

Held jsa safety meeting. Check pressure on well and blow down. Tubing depth 4147. Pump MLF 4147-3563. Pull lay down 19 jts leaving 115 in hole depth 3563. Talked with Hayes Thibodeaux (chev-eng) and David Alverado (NM Core). Pump 28 sacks class C 1.32 yield at 14.8 lbs and displace 18.5 bls toc 3287. Pull stand back 26 stands tubing depth 1946. Rig up lubricator. Run wire line and perf with 1 9/16 dp at 2590 then pull out of hole. Rig down lubricator. Try to establish injection rate 1500 psi, no good. Trip in 22 jts total 85 jts depth 2647. Pump 46 sacks class C 1.32 yield at 14.8 lbs and displace 12 bls toc 2193. Pull stand back all tubing. Shut in and secure well. held debrief meeting.

## Rpt # 6 . 12/17/2021

### Operations Summary

Held jsa safety meeting. Check pressure on well, do a 30 minute bubble test on surface. Pressure test casing 1000 psi for 15 minutes. Rig up lubricator. Run wire line and per with 1 9/16 tp at 530 then pull out of hole. Rig down lubricator. Try to establish injection rate but locked up to 1500. Trip in tubing 68 jts 2 7/8 depth 2101. Pump MLF 2101-632. Pull lay down 47 jts leaving 21 jts in hole depth 632. Pump 70 sacks class C 1.32 yield at 14.8 lbs. Pull lay down all tubing and top off well. Rig down tools, floor, and bird bath. Nipple down bop. Rig down service unit.

**CANDIE 13-1**  
**As plugged wellbore Diagram**

Created: 07/20/21 By: IYJQ  
 Updated: By:  
 Updated: By:  
 Lease: Candie 13  
 Field: Loving East  
 Surf. Loc.: 560' FWL & 660' FSL  
 Bot. Loc.:  
 County: Eddy St.: NM  
 Status: Inactive Oil Well

Well #: 1 St. Lse: 30015267090001  
 API  
 Surface TSHP/Rng: 13/28E  
 Unit Ltr.: Section: 13  
 Bottom Hole TSHP/Rng: Section:  
 Unit Ltr.:  
 COST CTR UCUS1AD00  
 CHEVNO: KZ8807

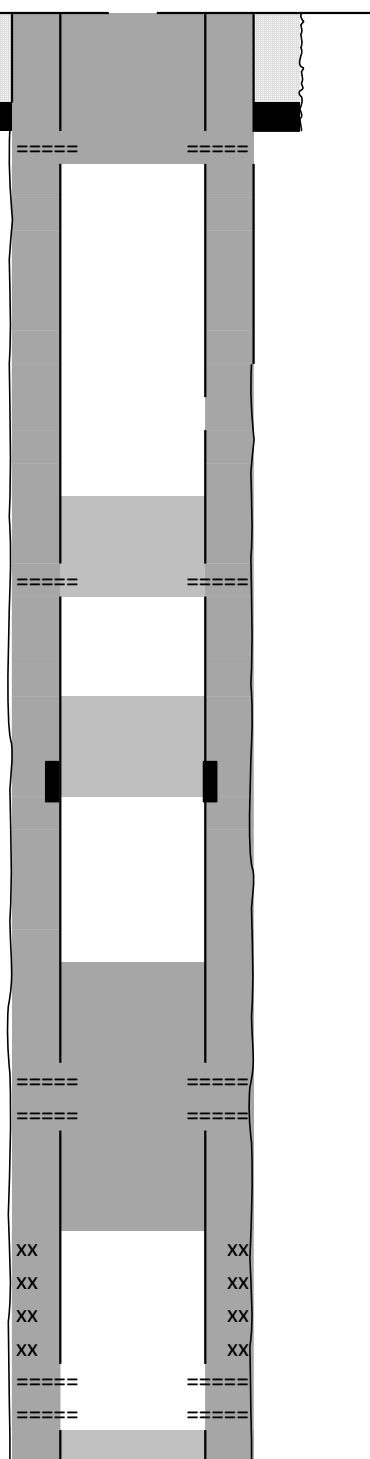
**Surface Casing**

Size: 8 5/8"  
 Wt., Grd.: 24.0#, R-1  
 Depth: 582  
 Sxs Cmt: 350 sxs  
 Circulate: Yes  
 TOC: Surface  
 Hole Size: 12-1/4"

DV tool @ 3513'

**Production Casing**

Size: 5-1/2"  
 Wt., Grd.: 15.5#, J-55  
 Depth: 6,300  
 Sxs Cmt: 1495 sxs  
 Circulate: Yes  
 TOC: Surface  
 Hole Size: 7-7/8"



KB:  
 DF:  
 GL: 2,981', 2,993'  
 Ini. Spud: 04/13/91  
 Ini. Comp.: 05/01/91

**Isolate Top of Salt, 8-5/8" shoe**

Perforate at 530' per CBL [no injection]  
 Cmt from 632' to surface  
 70 sacks Class C cement

**Isolate Bell Canyon, Lamar LS, Base of Salt**

Cmt from 2647' to 2193'  
 46 sacks Class C cement  
 Perf at 2590' (no injection)

**Isolate DV tool, Cherry Canyon**

Cmt from 3563' to 3287'  
 28 sacks Class C cement

**Isolate Brushy Canyon, Pardue perforations**

Tag at 5140'.  
 115 sacks Class C cement  
 5140' to 4147' (tag depth)

Perforations	Formation	Status
4767'-4779'	Pardue	Open
4786'-4804'	Pardue	Open
4811'-4830'	Pardue	Open
5306'-5338'	Brushy Canyon	Squeezed 7/14
5350'-5394'	Brushy Canyon	Squeezed 7/14
5516'-5540'	Brushy Canyon	Squeezed 7/14
5554'-5569'	Brushy Canyon	Squeezed 7/14
5804'-5822'	Brushy Canyon "AA"	Open
5851'-5871'	Brushy Canyon "AA"	Open
6147' - 6160'	Brushy Canyon "C"	Open

PBTD: 6,288  
 TD: 6300'

**District I**  
1625 N. French Dr., Hobbs, NM 88240  
Phone:(575) 393-6161 Fax:(575) 393-0720

**District II**  
811 S. First St., Artesia, NM 88210  
Phone:(575) 748-1283 Fax:(575) 748-9720

**District III**  
1000 Rio Brazos Rd., Aztec, NM 87410  
Phone:(505) 334-6178 Fax:(505) 334-6170

**District IV**  
1220 S. St Francis Dr., Santa Fe, NM 87505  
Phone:(505) 476-3470 Fax:(505) 476-3462

State of New Mexico  
Energy, Minerals and Natural Resources  
Oil Conservation Division  
1220 S. St Francis Dr.  
Santa Fe, NM 87505

CONDITIONS  
  
Action 67847

CONDITIONS

Operator: CHEVRON U S A INC 6301 Deauville Blvd Midland, TX 79706	OGRID: 4323
	Action Number: 67847
	Action Type: [C-103] Sub. Plugging (C-103P)

CONDITIONS

Created By	Condition	Condition Date
gcordero	None	12/20/2021