

Submit Copy To Appropriate District
Office
District I – (575) 393-6161
1625 N. French Dr., Hobbs, NM 88240
District II – (575) 748-1283
811 S. First St., Artesia, NM 88210
District III – (505) 334-6178
1000 Rio Brazos Rd., Aztec, NM 87410
District IV – (505) 476-3460
1220 S. St. Francis Dr., Santa Fe, NM
87505

State of New Mexico
Energy, Minerals and Natural Resources

Form C-103
Revised July 18, 2013

OIL CONSERVATION DIVISION
1220 South St. Francis Dr.
Santa Fe, NM 87505

WELL API NO. 30-039-18201
5. Indicate Type of Lease STATE <input type="checkbox"/> FEE <input checked="" type="checkbox"/>
6. State Oil & Gas Lease No.
7. Lease Name or Unit Agreement Name SAN JUAN 30-6 UNIT
8. Well Number 41
9. OGRID Number 372171
10. Pool name or Wildcat BLANCO MESAVERDE

SUNDRY NOTICES AND REPORTS ON WELLS (DO NOT USE THIS FORM FOR PROPOSALS TO DRILL OR TO DEEPEN OR PLUG BACK TO A DIFFERENT RESERVOIR. USE "APPLICATION FOR PERMIT" (FORM C-101) FOR SUCH PROPOSALS.)	
1. Type of Well: Oil Well <input type="checkbox"/> Gas Well <input checked="" type="checkbox"/> Other	
2. Name of Operator HILCORP ENERGY COMPANY	
3. Address of Operator 382 Road 3100, Aztec, NM 87410	
4. Well Location Unit Letter <u>M</u> : <u>1090</u> feet from the <u>SOUTH</u> line and <u>990</u> feet from the <u>WEST</u> line Section <u>13</u> Township <u>30N</u> Range <u>06W</u> NMPM RIO ARRIBA County	
11. Elevation (Show whether DR, RKB, RT, GR, etc.) 6171'	

12. Check Appropriate Box to Indicate Nature of Notice, Report or Other Data

NOTICE OF INTENTION TO:		SUBSEQUENT REPORT OF:	
PERFORM REMEDIAL WORK <input type="checkbox"/>	PLUG AND ABANDON <input type="checkbox"/>	REMEDIAL WORK <input checked="" type="checkbox"/>	ALTERING CASING <input type="checkbox"/>
TEMPORARILY ABANDON <input type="checkbox"/>	CHANGE PLANS <input type="checkbox"/>	COMMENCE DRILLING OPNS. <input type="checkbox"/>	P AND A <input type="checkbox"/>
PULL OR ALTER CASING <input type="checkbox"/>	MULTIPLE COMPL <input type="checkbox"/>	CASING/CEMENT JOB <input type="checkbox"/>	
DOWNHOLE COMMINGLE <input type="checkbox"/>			
CLOSED-LOOP SYSTEM <input type="checkbox"/>			
OTHER: <input type="checkbox"/>		OTHER: <input type="checkbox"/>	

13. Describe proposed or completed operations. (Clearly state all pertinent details, and give pertinent dates, including estimated date of starting any proposed work). SEE RULE 19.15.7.14 NMAC. For Multiple Completions: Attach wellbore diagram of proposed completion or recompletion.

Hilcorp Energy repaired the bradenhead for the subject well. See the attached daily operations detail, current schematic, and MIT.

Spud Date:

Rig Release Date:

I hereby certify that the information above is true and complete to the best of my knowledge and belief.

SIGNATURE Priscilla Shorty TITLE Operations/Regulatory Technician – Sr. DATE 12/28/2021

Type or print name Priscilla Shorty E-mail address: pshorty@hilcorp.com PHONE: (505) 324-5188

For State Use Only

APPROVED BY: _____ TITLE _____ DATE _____

Conditions of Approval (if any):

SAN JUAN 30-6 UNIT 41

30.039.18201

BRADENHEAD REPAIR

12/2/2021 – MIRU. CK PRESSURES. SIBH = 60 PSI, SIICP = 33 PSI, SICP = 44 PSI, SITP = 31 PSI. ND WH, NU BOP. PULL HANGER AND REMOVE. SWI. SDFN.

12/3/2021 – CK PRESSURES. SIBH = 66 PSI, SIICP = 40 PSI, SICP = 90 PSI, SITP = 90 PSI. CONDUCT MONTHLY BOP TEST. TOO H INSPECTING TBG. MU 5-1/2" SCRAPER AND 5-1/2" RBP, SET AT 33'. TEST WH FOR 30 MIN, PRESSURE DROPPED FROM 900 TO 500 PSI. SWI. SDFWE.

12/6/2021 – CK PRESSURES. BH = 65 PSI, TBG = 0 PSI, CSG = 0 PSI. PU 5-1/2" SCRAPER TO 3900', TOO H, LD SCRAPER. ISOLATE LEAK IN 7-5/8" CSG INT AND BH. LOAD HOLE T/ ANNULAR. PUMP 8.5 BBLS STARTED TO CIRC T/ BH, SD CALLED OFFICE, PUT SOAP W/1 GAL POLYMER IN LINE TO PUMP DOWN ANNULAR, PUMP DOWN ANNULAR, @ 28 BBLS AWAY SOAP SWEEP BACK TO SURFACE, THE HOLE WAS APPROXIMATELY @ 450'. SWI. SDFN.

12/7/2021 - CK PRESSURES. BH = 15 PSI, ANNULAR PSI = 100 PSI, CSG = 100 PSI. HEC CALLED AND EMAILED MONICA KUEHLING, NMOCD, REGARDING PATH FORWARD. IT WAS DECIDED THAT THE CSG WILL BE PERF'D @ 3350' AND SQUEEZED. MU CIBP, TIH SET @ 3888'. LOAD HOLE, TOO H. PU PKR SET 60' TEST 5-1/2" TO 500 PSI. LD PKR. RU WIRELINE, RIH W/ 3-1/8" GUN 4 SHOTS @ 3350'. RUN PKR IN 60' EST INJ RATE. CIRC OUT ANNULAR. OPEN BH HAD CIRC. SWI SDFN.

12/8/2021 - CK PRESSURES. BH = 0 PSI, ANNULAR PSI = 0 PSI, CSG = 0 PSI. PU RETAINER, TIH AND SET @ 3300'. PUMP 42 SX TYPE III INTO PERF'D HOLES. TOO H. SWI. SDFN.

12/9/2021 - CK PRESSURES. BH = 0 PSI, ANNULAR PSI = 0 PSI, CSG = 0 PSI. PU MILL & BIT SUB. TIH TAG @ 3262'. DRILL CMT F/3262' TO RETAINER @ 3300'. DRILL CMT TO 3351', 38' OF CMT ON TOP OF RETAINER. TOO H LD MILL. RUN CBL. TOC AROUND 2940'. SWI. SDFWE.

12/10/2021 – HEC E-MAILED THE CBL TO MONICA KUEHLING, NMOCD, WITH A PLAN TO CUT THE 5-1/2" CSG @ 2770'. NMOCD APPROVED THE PLAN.

12/13/2021 - CK PRESSURES. SIBH = 0 PSI, SIICP = 0 PSI, SICP = 0 PSI, SITP = N/A. VERIFY CIBP IS HOLDING. ND BOP, ND TBG HEAD. SPEAR CSG AND WORK SLIPS FOR 5-1/2" CSG. LD CSG SPEAR AND NU BOP. RIH TO 2770' AND JET CUT 5-1/2" CSG. SPEAR 5-1/2" CSG. LD 66 JTS OF CSG. ND BOP, ND 5-1/2" CSG SPOOL. NU BOP. SWI. SDFN.

12/14/2021 - CK PRESSURES. SIBH = 0 PSI, SICP = 0 PSI, SITP = N/A. MU 7-5/8" SCRAPER AND TIH TO 2770'. TOO H AND LD SCRAPER. RIH AND PULL CBL FROM 2700'. MU 7-5/8" PKR. TIH TO 50'. TEST WH, RING GASKET LEAKING (WILL REPLACE). ISOLATE HOLE IN CSG W/ PKR BETWEEN 262' AND 293'. SWI SDFN.

12/15/2021 - CK PRESSURES. SIBH = 0 PSI, SICP = 0 PSI, SITP = N/A. REPLACE RING GASKET UNDER ADAPTER FLANGE ON WH. TIH AND SET PKR AT 262'. PT CSG AND WH TO 700 PSI FOR 15 MIN. TOO H W/ PKR. TIH TO 293', SET PKR, PT CSG DOWN TO PLUG AT 3888' TO 600 PSI FOR 15 MIN. TOO H W/ PKR. HEC E-MAILED NMOCD WITH PLANS TO SQUEEZE HOLES IN CSG. THE PLANS WERE NOT APPROVED. SWI. SDFN.

12/16/2021 - CK PRESSURES. SIBH = 0 PSI, SICP = 0 PSI, SITP = N/A. RELEASE CREW, WO NMOCD APPROVAL. HEC HAD A CONFERENCE CALL WITH BRANDON POWELL, THOMAS VERMERSCH, AND JAMES HAWKINS (NMOCD) REGARDING THE UNAPPROVED PROPOSED PLANS. HEC PROVIDED ADDITIONAL DETAILS ON THE BH REPAIR AND ADDRESSED QUESTIONS FROM NMOCD. BRANDON

SAN JUAN 30-6 UNIT 41

30.039.18201

BRADENHEAD REPAIR

POWELL, NMOCD, APPROVED THE PREVIOUS PROPOSED PLANS TO SQUEEZE HOLES BETWEEN 262' AND 293' IN THE CSG.

12/17/2021 - CK PRESSURES. SIBH = 0 PSI, SICP = 0 PSI, SITP = N/A. TIH W/ PKR AND SET AT 138'. PUMP 18.5 BBLS OF TYPE III CMT. MIXING SYSTEM GOT PLUGGED FROM FROZEN DEBRIS. DID NOT CMT ANYMORE. CIRC CMT OUT OF THE HOLE. UNSET PKR AND TOO. SWI SDFN.

12/18/2021 - CK PRESSURES. SIBH = 0 PSI, SICP = 0 PSI, SITP = N/A. TIH W/ PKR AND SET AT 138'. MIX AND PUMPED 120 SX (29.3 BBLS) TYPE III CMT TO REPAIR HOLES BETWEEN 262' AND 293'. CIRC CMT TO SURFACE. WOC. UNSET PKR AND TOO. SWI. SDFWE.

12/20/2021 - CK PRESSURES. SIBH = 0 PSI, SICP = 0 PSI, SITP = N/A. PU 6-3/4" BIT AND TAG CMT AT 226'. DO CMT TO 285'. CIRC CLEAN. PT CSG TO 600 PSI FOR 15 MIN. TOO. SWI. SDFN.

12/21/2021 - CK PRESSURES. SIBH = 0 PSI, SICP = 0 PSI, SITP = N/A. CONDUCT WITNESSED MIT (560 PSI/30MINS) WITH JOHN DURHAM, NMOCD. ND BOP. NU CSG SPOOL AND TBG HEAD. NU BOP STACK. TIH TO 2820' AND UNLOAD WATER. RU POWER SWIVEL AND UNLOAD WATER. SWI. SDFN.

12/22/2021 - CK PRESSURES. SIBH = 0 PSI, SICP = 0 PSI, SITP = 0. BREAK CIRC W/AIR. START MIST/FOAM & DRILL UP RETAINER PARTS. D/O CIBP & TAG UP @ 5409'. CLEAN OUT TO 5445'. PUH. SWI. SDFN.

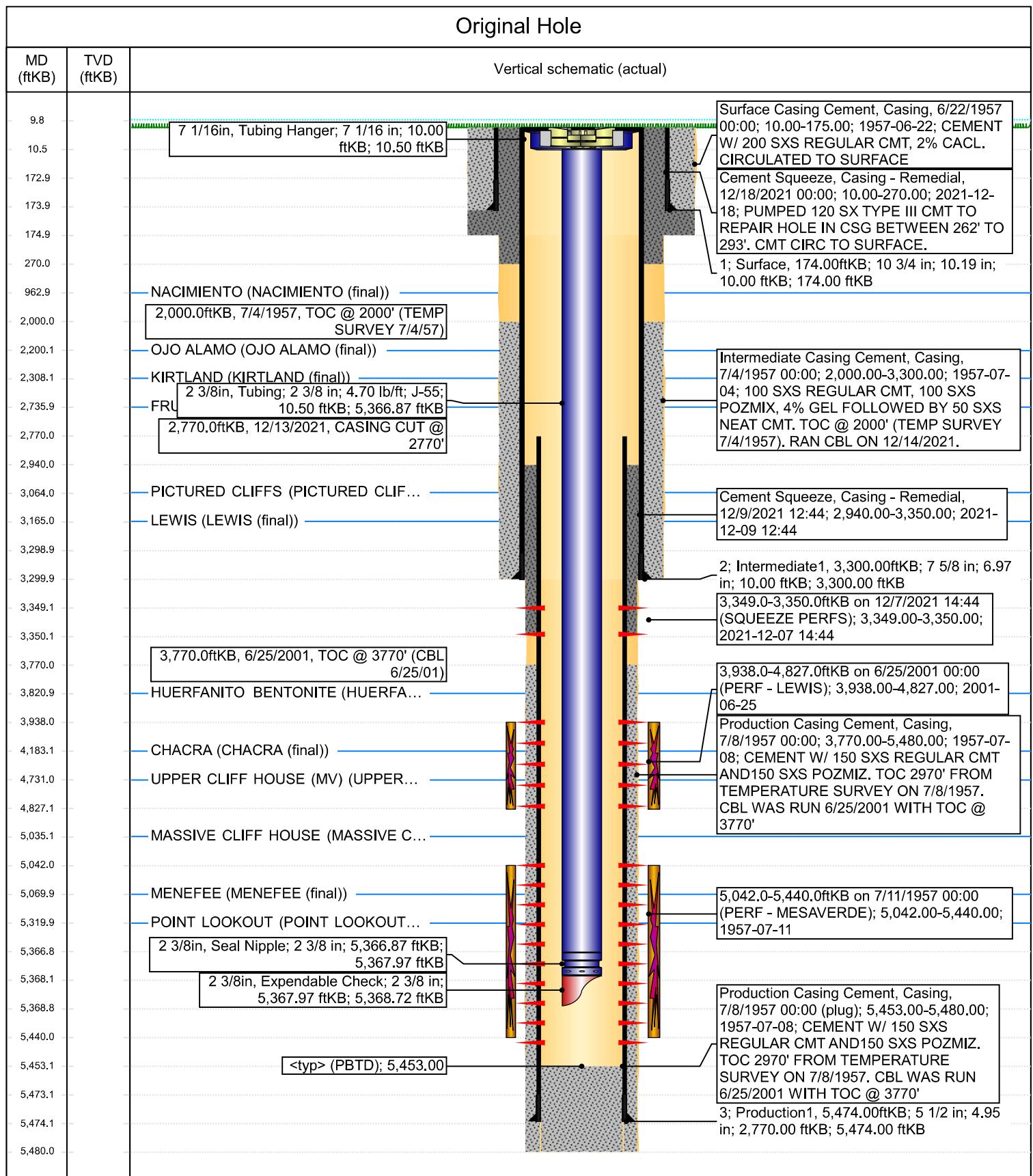
12/23/2021 - CK PRESSURES. SIBH = 0 PSI, SICP = 110 PSI, SITP = 110. TOO W/DRILL COLLARS & BIT. TIH W/171 JTS 2-3/8" 4.7# J-55 TBG SET @ 5369', SN @ 5368'. ND BOP. NU WH. PT TBG TO 500#/15 MINS. PUMP OFF CK @ 1050# & UNLOAD HOLE. RD. RIG RELEASED.

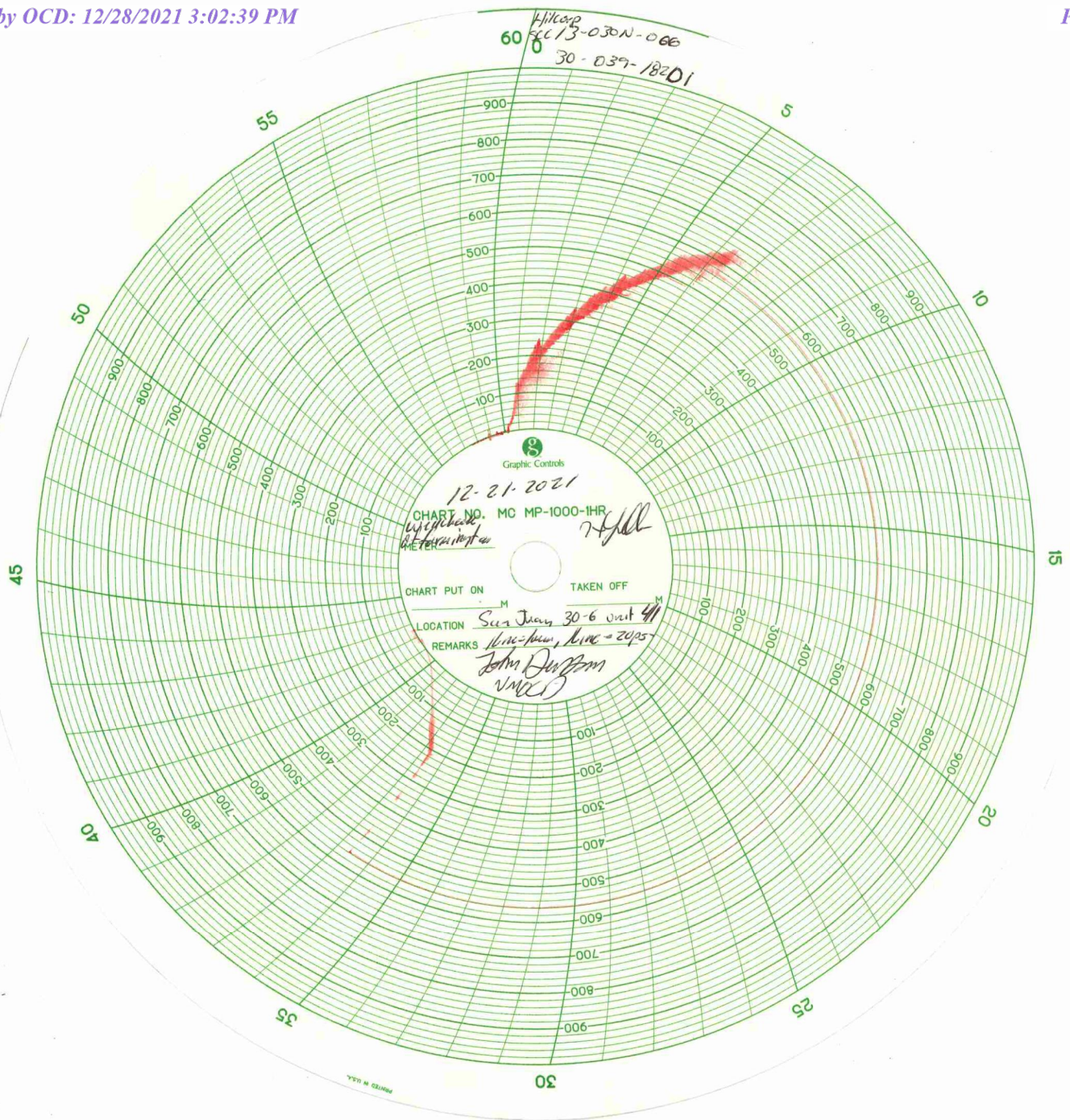


Current Schematic - Version 3

Well Name: SAN JUAN 30-6 UNIT #41

API / UWI 3003918201	Surface Legal Location 013-030N-006W-M	Field Name BLANCO MESAVERDE (PRORATED GAS)	Route 1201	State/Province NEW MEXICO	Well Configuration Type
Ground Elevation (ft) 6,171.00	Original KB/RT Elevation (ft) 6,181.00	KB-Ground Distance (ft) 10.00	KB-Casing Flange Distance (ft)	KB-Tubing Hanger Distance (ft)	





District I
1625 N. French Dr., Hobbs, NM 88240
Phone:(575) 393-6161 Fax:(575) 393-0720
District II
811 S. First St., Artesia, NM 88210
Phone:(575) 748-1283 Fax:(575) 748-9720
District III
1000 Rio Brazos Rd., Aztec, NM 87410
Phone:(505) 334-6178 Fax:(505) 334-6170
District IV
1220 S. St Francis Dr., Santa Fe, NM 87505
Phone:(505) 476-3470 Fax:(505) 476-3462

State of New Mexico
Energy, Minerals and Natural Resources
Oil Conservation Division
1220 S. St Francis Dr.
Santa Fe, NM 87505

CONDITIONS

Action 69235

CONDITIONS

Operator: HILCORP ENERGY COMPANY 1111 Travis Street Houston, TX 77002	OGRID: 372171
	Action Number: 69235
	Action Type: [C-103] Sub. Workover (C-103R)

CONDITIONS

Created By	Condition	Condition Date
mkuehling	This was a bradenhead repair - bradenhead test required at 30 day from rig move - 6 month from rig move and 1 year from rig move.	12/29/2021