

Submit 1 Copy To Appropriate District Office
 District I – (575) 393-6161
 1625 N. French Dr., Hobbs, NM 88240
 District II – (575) 748-1283
 811 S. First St., Artesia, NM 88210
 District III – (505) 334-6178
 1000 Rio Brazos Rd., Aztec, NM 87410
 District IV – (505) 476-3460
 1220 S. St. Francis Dr., Santa Fe, NM 87505

State of New Mexico
 Energy, Minerals and Natural Resources
OIL CONSERVATION DIVISION
 1220 South St. Francis Dr.
 Santa Fe, NM 87505

Form C-103
 Revised July 18, 2013

WELL API NO. 30-025-20820	
5. Indicate Type of Lease STATE <input checked="" type="checkbox"/> FEE <input type="checkbox"/>	
6. State Oil & Gas Lease No.	
7. Lease Name or Unit Agreement Name Vacuum Glorieta East Unit 37	
8. Well Number 04	
9. OGRID Number 217817	
10. Pool name or Wildcat Vacuum; Glorieta	
SUNDRY NOTICES AND REPORTS ON WELLS (DO NOT USE THIS FORM FOR PROPOSALS TO DRILL OR TO DEEPEN OR PLUG BACK TO A DIFFERENT RESERVOIR. USE "APPLICATION FOR PERMIT" (FORM C-101) FOR SUCH PROPOSALS.) 1. Type of Well: Oil Well <input checked="" type="checkbox"/> Gas Well <input type="checkbox"/> Other <input type="checkbox"/>	
2. Name of Operator ConocoPhillips Company	
3. Address of Operator 600 W. Illinois Ave., Midland Tx 79701	
4. Well Location Unit Letter <u>H</u> : <u>2180</u> feet from the <u>North</u> line and <u>660</u> feet from the <u>East</u> line Section <u>31</u> Township <u>17S</u> Range <u>35E</u> NMPM Lea County	
11. Elevation (Show whether DR, RKB, RT, GR, etc.) 3974' GR	

12. Check Appropriate Box to Indicate Nature of Notice, Report or Other Data

NOTICE OF INTENTION TO:

PERFORM REMEDIAL WORK ☐ PLUG AND ABANDON ☐
 TEMPORARILY ABANDON ☐ CHANGE PLANS ☐
 PULL OR ALTER CASING ☐ MULTIPLE COMPL ☐
 DOWNHOLE COMMINGLE ☐
 CLOSED-LOOP SYSTEM ☐
 OTHER: ☐

SUBSEQUENT REPORT OF:

REMEDIAL WORK ☐ ALTERING CASING ☐
 COMMENCE DRILLING OPNS. ☐ P AND A ☒
 CASING/CEMENT JOB ☐ PNR
 OTHER: ☐

13. Describe proposed or completed operations. (Clearly state all pertinent details, and give pertinent dates, including estimated date of starting any proposed work). SEE RULE 19.15.7.14 NMAC. For Multiple Completions: Attach wellbore diagram of proposed completion or recompletion.

6/11/2021 – RIG UP UNIT. MOVE EQUIPMENT. SECURE WELL.

6/14/2021 - BLEED WELL, ZERO PSI ON CSG. MOVE IN AND RACK WORK STRING. FUNCTION TEST BOPE, ND WELLHEAD, NU BOPE. PU RETRIEVING HEAD AND 30 JTS 2 3/8 WORK STRING. WELLHEAD STARTED TO LEAN TO SIDE, DUG OUT CELLAR TO SURFACE HEAD, FOUND SEVERAL LARGE HOLES IN 4.5 PROD CSG JUST ABOVE SURFACE HEAD, CONTACT ENGINEERING FOR PATH FORWARD. POOH / LD WORK STRING. ND BOPE, NU WELLHEAD RD PLUGGING EQUIPMENT, MOVE OFF

11/12/2021 - MOVE PLUGGING EQUIPMENT TO LOC. SPOT PUMPS, PITS AND RIG, MOVE IN WORK STRING, RIG UP SERVICE RIG, DUG OUT CELLAR. FUNCTION TEST BOP, ND WELLHEAD, NU BOPE, SHOP PRESSURE TEST PIPE AND BLIND RAMS ON 11/12/21, 250 PSI AND 5000 PSI, EACH TEST WAS HELD FOR 5 MINUTES AND WAS GOOD, UNABLE TO PRESSURE TEST THE BOP/TUBING HEAD CONNECTION DUE TO B-5 TBG HANGER, SWIOWE

11/15/2021- ZERO PSI ON TBG, CSG AND SURFACE, BLEED WELL TO PIT. PRESSURE UP ON CSG 1000 PSI / 30 MIN, NO LEAK. PU RETRIEVING HEAD, PU WORK STRING, TAG SAND @ 2475. CIRC SAND OFF RBP @ 2490, CIRC 14.5 MUD. RELEASE RBP, PRESSURE UP ON CSG, 600 PSI / 15 MIN, NO LEAK. POOH W / TBG, LD RBP, RIH W / RETRIEVING HEAD AND TBG TO 3200 FT, SWION.

11/16/2021 - ZERO PSI ON TBG, CSG AND SURFACE, BLEED WELL TO PIT. PU REST OF WORK STRING, TAG RBP @ 4625. SPOT 30 BBLS 14# KILL FLUID ON TOP OF RBP. RELEASE RBP, RIH W / TBG, SET RBP @ 6000 FT. CIRC WELL CLEAN. SPOT 75 SX CLASS C CEMENT 6000-4843. POOH W / TBG, LD RETRIEVING HEAD, SWION

11/17/2021 - ZERO PSI ON TBG, CSG AND SURFACE, BLEED WELL TO PIT. RIH W / TBG, TTOC @ 5110. PRESSURE UP ON CSG 1000 PSI / 30 MIN, NO LEAK. CIRC MLF. POOH W / TBG TO 4334. SPOT 25 SX CLASS C CEMENT 4334-4126. POOH W / TBG. SWI, WOC. RIH W / TBG TTOC @ 4120, POOH W / TBG TO 3715, SWION.

11/18/2021 - ZERO PSI ON TBG, CSG AND SURFACE, BLEED WELL TO PIT. SPOT 25 SX CLASS C CEMENT 3715-3344. POOH W / TBG TO 2835. SPOT 25 SX CLASS C CEMENT 2835-2464. POOH W / TBG, PU PKR, RIH W / TBG, SET PKR @ 945. SWI, WOC, MRLU WIRELINE, RIH W / WEIGHT BAR, TTOC @ 2446, POOH W / WEIGHT BAR, RIH W / STRIP GUN, PERF PROD

CSG @ 1622, POOH W / GUN. PRESSURE UP ON PERFS 1000 PSI / 30 MIN, COULD NO BREAK PERFS, CONTACT NMOCD W / RESULTS, SWION.

11/19/2021 - ZERO PSI ON TBG, CSG AND SURFACE, BLED WELL TO PIT. SPOT 25 SX CLASS C CEMENT 1694-1276. POOH W / TBG. SWI, WOC. MIRU WIRELINE. RIH W / WEIGHT BAR, TTOC @ 1276, POOH W / WEIGHT BAR, RIH W / STRIP GUN, PERF PROD CSG @ 150, POOH W / GUN. PRESSURE UP ON PERFS 1000 PSI / 30 MIN, COULD NO BREAK PERFS. CONTACT ENGINEERING AND NMOCD FOR PATH FORWARD, SWIOWE

11/22/2021 - ZERO PSI ON TBG, CSG AND SURFACE, BLED WELL TO PIT. OBSERVED SMALL LEAK AROUND SURFACE CSG HEAD, CONTACT ENGINEERING FOR PATH FORWARD, DUG OUT SURFACE HEAD, BROKE OUT SURFACE VALVES AND RISERS, NO CEMENT IN SURFACE HEAD, TEST FOR GAS IN SURFACE CSG, ZERO LEL, 5-24 PPM CO2, CONTACT ENGINEERING W / RESULTS, SWION.

11/23/2021 - ZERO PSI ON TBG, CSG AND SURFACE, NO GAS LEAK DETECTED IN CELLAR OR AROUND SURFACE CSG HEAD. CONTACT ENGINEERING AND NMOCD FOR PATH FORWARD. RIH W / TBG TO 320 FT. CIRC 70 SX CLASS C CEMENT TO SURFACE. POOH / LD TBG. FILL WELLBORE W / CEMENT TO SURFACE. ND BOPE. VERIFY CEMENT TO SURFACE. RIG DOWN SERVICE RIG AND PLUGGING EQUIPMENT, CLEAN LOC, MOVE OFF

Spud Date:

5/23/1964

Rig Release Date:

I hereby certify that the information above is true and complete to the best of my knowledge and belief.

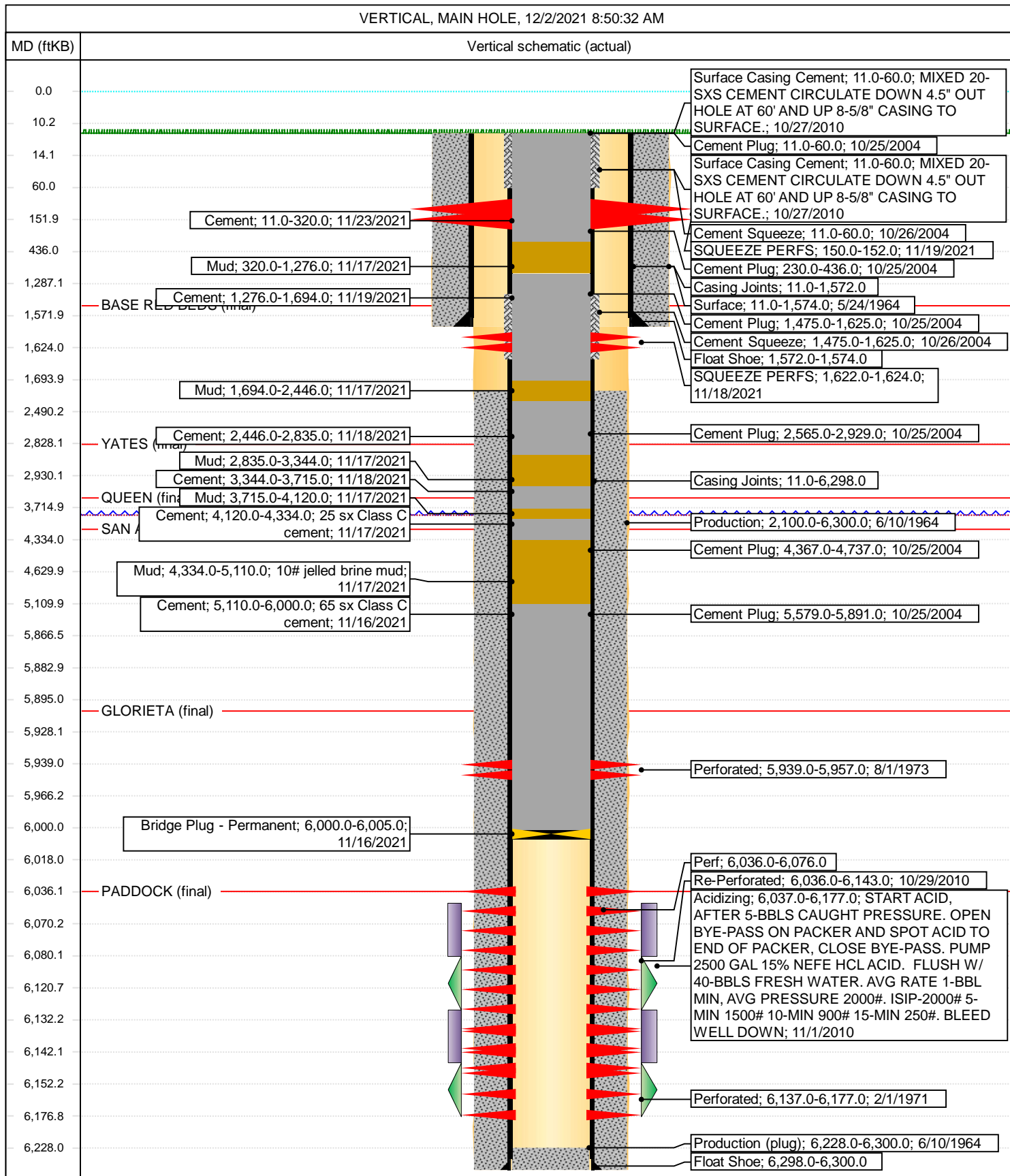
SIGNATURE: D. Walkup TITLE: Regulatory Coordinator DATE: 12/3/2021Type or print name: Danielle D. Walkup E-mail address: d.d.walkup@ PHONE: (432) 688-9053**For State Use Only**APPROVED BY: Kerry Fortner TITLE Compliance Officer A DATE 1/20/22
575-263-6633



CURRENT SCHEMATIC

VACUUM GLORIETA EAST UNIT 037-04

District PERMIAN CONVENTIONAL	Field Name VACUUM	API / UWI 3002520820	County LEA	State/Province NEW MEXICO
Original Spud Date 5/23/1964	Surface Legal Location SEC. 31, T17S, R35E, UL "H"	E/W Dist (ft) 660.00	E/W Ref E	N/S Dist (ft) 2,180.00
			N/S Ref N	

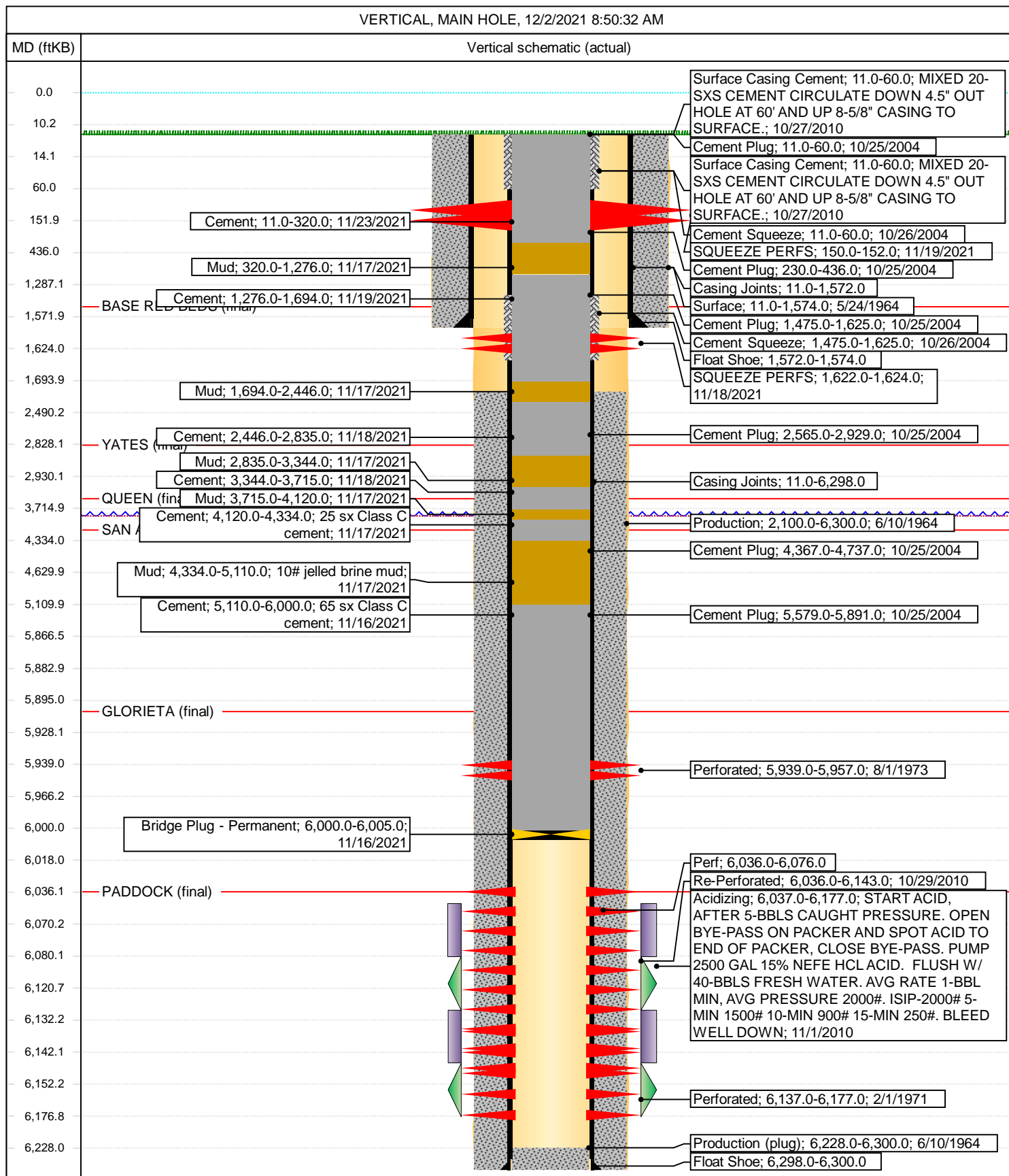




CURRENT SCHEMATIC

VACUUM GLORIETA EAST UNIT 037-04

District PERMIAN CONVENTIONAL	Field Name VACUUM	API / UWI 3002520820	County LEA	State/Province NEW MEXICO
Original Spud Date 5/23/1964	Surface Legal Location SEC. 31, T17S, R35E, UL "H"	E/W Dist (ft) 660.00	E/W Ref E	N/S Dist (ft) 2,180.00 N/S Ref N



District I
1625 N. French Dr., Hobbs, NM 88240
Phone:(575) 393-6161 Fax:(575) 393-0720
District II
811 S. First St., Artesia, NM 88210
Phone:(575) 748-1283 Fax:(575) 748-9720
District III
1000 Rio Brazos Rd., Aztec, NM 87410
Phone:(505) 334-6178 Fax:(505) 334-6170
District IV
1220 S. St Francis Dr., Santa Fe, NM 87505
Phone:(505) 476-3470 Fax:(505) 476-3462

State of New Mexico
Energy, Minerals and Natural Resources
Oil Conservation Division
1220 S. St Francis Dr.
Santa Fe, NM 87505

CONDITIONS

Action 64958

CONDITIONS

Operator: CONOCOPHILLIPS COMPANY 600 W. Illinois Avenue Midland, TX 79701	OGRID: 217817
	Action Number: 64958
	Action Type: [C-103] Sub. Plugging (C-103P)

CONDITIONS

Created By	Condition	Condition Date
kfortner	None	1/20/2022