

Well Name: BRECKENRIDGE FED COM	Well Location: T24S / R35E / SEC 9 / SESE / 32.225682 / -103.367935	County or Parish/State: LEA / NM
Well Number: 304H	Type of Well: OIL WELL	Allottee or Tribe Name:
Lease Number: NMNM138886	Unit or CA Name:	Unit or CA Number:
US Well Number: 3002547027	Well Status: Approved Application for Permit to Drill	Operator: FRANKLIN MOUNTAIN ENERGY LLC

Notice of Intent

Sundry ID: 2626581

Type of Submission: Notice of Intent

Date Sundry Submitted: 08/02/2021

Date proposed operation will begin: 08/02/2021

Type of Action: Other

Time Sundry Submitted: 04:14

Procedure Description: Franklin Mountain Energy, LLC (FME), Operator of the above captioned well, respectfully requests approval to change the name of the well from Breckenridge Fed Com 302H to BRECKENRIDGE FED COM 304H. Revised C-102 attached for BLM record.

Surface Disturbance

Is any additional surface disturbance proposed?: No

NOI Attachments

Procedure Description

C_102_Breckenridge_Fed_Com_304H_20210802161408.pdf

Well Name: BRECKENRIDGE FED COM	Well Location: T24S / R35E / SEC 9 / SESE / 32.225682 / -103.367935	County or Parish/State: LEA / NM
Well Number: 304H	Type of Well: OIL WELL	Allottee or Tribe Name:
Lease Number: NMNM138886	Unit or CA Name:	Unit or CA Number:
US Well Number: 3002547027	Well Status: Approved Application for Permit to Drill	Operator: FRANKLIN MOUNTAIN ENERGY LLC

Operator Certification

I certify that the foregoing is true and correct. Title 18 U.S.C. Section 1001 and Title 43 U.S.C. Section 1212, make it a crime for any person knowingly and willfully to make to any department or agency of the United States any false, fictitious or fraudulent statements or representations as to any matter within its jurisdiction. Electronic submission of Sundry Notices through this system satisfies regulations requiring a submission of Form 3160-5 or a Sundry Notice.

Operator Electronic Signature: RACHAEL OVERBEY	Signed on: AUG 02, 2021 04:14 PM
Name: FRANKLIN MOUNTAIN ENERGY LLC	
Title: Director – Operations Planning and Regulatory	
Street Address: 2401 E 2nd Avenue, Suite 300	
City: Denver	State: CO
Phone: (720) 414-7868	
Email address: roverbey@fmellc.com	

Field Representative

Representative Name:		
Street Address:		
City:	State:	Zip:
Phone:		
Email address:		

BLM Point of Contact

BLM POC Name: CHRISTOPHER WALLS	BLM POC Title: Petroleum Engineer
BLM POC Phone: 5752342234	BLM POC Email Address: cwalls@blm.gov
Disposition: Approved	Disposition Date: 12/06/2021
Signature: Chris Walls	

District I
1625 N. French Dr., Hobbs, NM 88240
Phone: (575) 393-6161 Fax: (575) 393-0720

District II
811 S. First St., Artesia, NM 88210
Phone: (575) 748-1283 Fax: (575) 748-9720

District III
1000 Rio Brazos Road, Aztec, NM 87410
Phone: (505) 334-6178 Fax: (505) 334-6170

District IV
1220 S. St. Francis Dr., Santa Fe, NM 87505
Phone: (505) 746-3460 Fax: (505) 476-3462

State of New Mexico
Energy, Minerals & Natural Resources Department
OIL CONSERVATION DIVISION
1220 South St. Francis Dr.
Santa Fe, NM 87505

Form C-102
Revised August 1, 2011
Submit one copy to appropriate
District Office

☒ AMENDED REPORT

WELL LOCATION AND ACREAGE DEDICATION PLAT

¹ API Number 30-025-47027	² Pool Code 98294	³ Pool Name WC-025 G-07 S243517D; MIDDLE BONE SPRING
⁴ Property Code 327347	⁵ Property Name BRECKENRIDGE FED COM	⁶ Well Number 304H
⁷ OGRID No. 373910	⁸ Operator Name FRANKLIN MOUNTAIN ENERGY LLC	⁹ Elevation 3374.4'

¹⁰Surface Location

UL or lot no. P	Section 9	Township 24S	Range 35E	Lot Idn	Feet from the 325	North/South line SOUTH	Feet from the 1233	East/West line EAST	County LEA
--------------------	--------------	-----------------	--------------	---------	----------------------	---------------------------	-----------------------	------------------------	---------------

¹¹ Bottom Hole Location If Different From Surface

UL or lot no. 1	Section 4	Township 24S	Range 35E	Lot Idn	Feet from the 150	North/South line NORTH	Feet from the 350	East/West line EAST	County LEA
¹² Dedicated Acres 320.19		¹³ Joint or Infill		¹⁴ Consolidation Code		¹⁵ Order No.			

No allowable will be assigned to this completion until all interests have been consolidated or a non-standard unit has been approved by the division.

16

NOTE:

- Distances referenced on plat to section lines are perpendicular.
- Basis of Bearing is a Transverse Mercator Projection with a Central Meridian of W103°53'00"

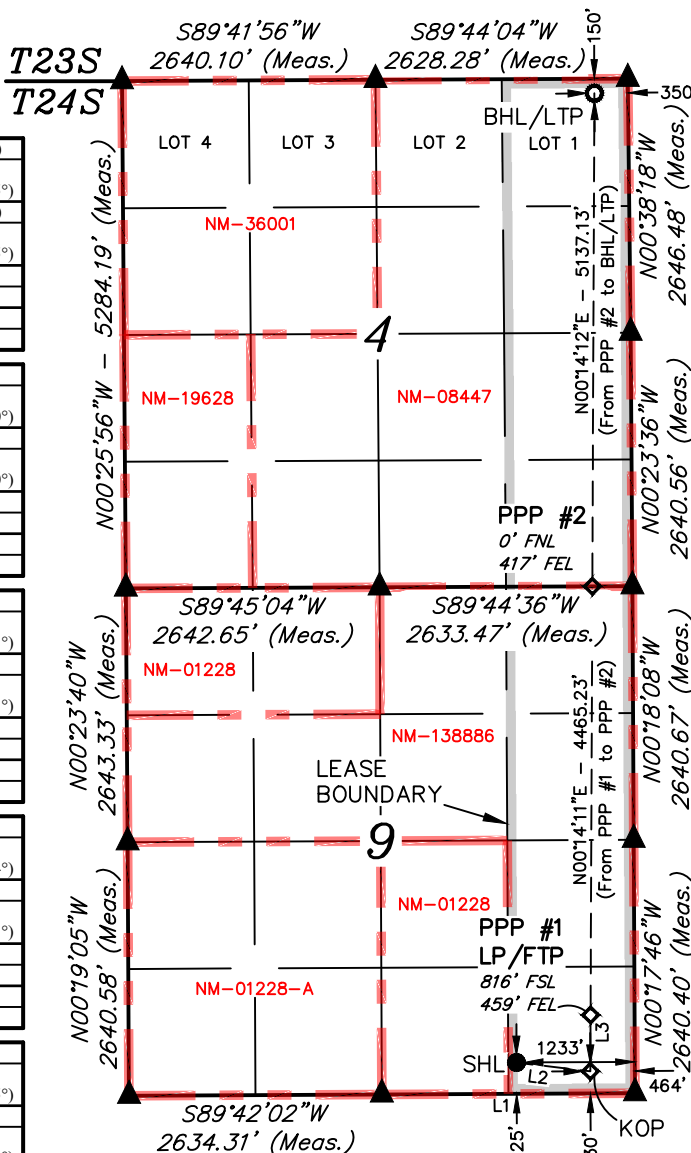
NAD 83 (SURFACE HOLE LOCATION)
LATITUDE = 32°13'32.45" (32.225682°)
LONGITUDE = 103°22'04.57" (103.367935°)
NAD 27 (SURFACE HOLE LOCATION)
LATITUDE = 32°13'32.00" (32.225556°)
LONGITUDE = 103°22'02.87" (103.367465°)
STATE PLANE NAD 83 (N.M. EAST)
N: 447178.02' E: 839870.28'
STATE PLANE NAD 27 (N.M. EAST)
N: 447118.79' E: 798685.03'

NAD 83 (KOP)
LATITUDE = 32°13'31.52" (32.225421°)
LONGITUDE = 103°21'55.62" (103.365450°)
NAD 27 (KOP)
LATITUDE = 32°13'31.06" (32.225295°)
LONGITUDE = 103°21'53.93" (103.364980°)
STATE PLANE NAD 83 (N.M. EAST)
N: 447090.09' E: 840639.64'
STATE PLANE NAD 27 (N.M. EAST)
N: 447030.85' E: 799454.36'

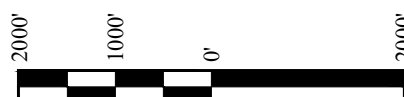
NAD 83 (PPP #1 - LP/FTP)
LATITUDE = 32°13'31.31" (32.227031°)
LONGITUDE = 103°21'55.56" (103.365433°)
NAD 27 (PPP #1 - LP/FTP)
LATITUDE = 32°13'36.86" (32.226905°)
LONGITUDE = 103°21'53.87" (103.364963°)
STATE PLANE NAD 83 (N.M. EAST)
N: 447675.85' E: 840639.60'
STATE PLANE NAD 27 (N.M. EAST)
N: 447616.60' E: 799454.35'

NAD 83 (PPP #2)
LATITUDE = 32°14'21.49" (32.239302°)
LONGITUDE = 103°21'55.09" (103.365304°)
NAD 27 (PPP #2)
LATITUDE = 32°14'21.03" (32.239176°)
LONGITUDE = 103°21'53.40" (103.364833°)
STATE PLANE NAD 83 (N.M. EAST)
N: 452140.41' E: 840639.33'
STATE PLANE NAD 27 (N.M. EAST)
N: 452081.04' E: 799454.26'

NAD 83 (BHL/LTP)
LATITUDE = 32°15'12.31" (32.253419°)
LONGITUDE = 103°21'54.56" (103.365155°)
NAD 27 (BHL/LTP)
LATITUDE = 32°15'11.86" (32.253293°)
LONGITUDE = 103°21'52.86" (103.364683°)
STATE PLANE NAD 83 (N.M. EAST)
N: 457276.77' E: 840639.00'
STATE PLANE NAD 27 (N.M. EAST)
N: 457217.26' E: 799454.12'



LINE TABLE		
LINE	DIRECTION	LENGTH
L1	S89°43'57"W	2636.55'
L2	S83°14'24"E	774.48'
L3	N00°14'10"E	585.85'



SCALE
DRAWN BY: T.S. 02-21-19
REV:3 04-14-21 R.J.

(UPDATE BORE PATH & ADD KOP/PPP)

- = SURFACE HOLE LOCATION
 ◆ = KOP/PPP
 ○ = BOTTOM HOLE LOCATION/LAST TAKE POINT
 ▲ = SECTION CORNER LOCATED

17 OPERATOR CERTIFICATION

I hereby certify that the information contained herein is true and complete to the best of my knowledge and belief, and that this organization either owns a working interest or unleased mineral interest in the land including the proposed bottom hole location or has a right to drill this well at this location pursuant to a contract with an owner of such a mineral or working interest, or to a voluntary pooling agreement or a compulsory pooling order heretofore entered by the division.

Signature 4/30/2021
Date

Shelly Albrecht
Printed Name

salbrecht@fmellc.com
E-mail Address

18 SURVEYOR CERTIFICATION

I hereby certify that the well location shown on this plat was plotted from field notes of actual surveys made by me or under my supervision, and that the same is true and correct to the best of my belief.

May 7, 2019

Date of Survey _____
Signature and Seal of Professional Surveyor: _____



Certificate Number:

District I
1625 N. French Dr., Hobbs, NM 88240
Phone:(575) 393-6161 Fax:(575) 393-0720
District II
811 S. First St., Artesia, NM 88210
Phone:(575) 748-1283 Fax:(575) 748-9720
District III
1000 Rio Brazos Rd., Aztec, NM 87410
Phone:(505) 334-6178 Fax:(505) 334-6170
District IV
1220 S. St Francis Dr., Santa Fe, NM 87505
Phone:(505) 476-3470 Fax:(505) 476-3462

State of New Mexico
Energy, Minerals and Natural Resources
Oil Conservation Division
1220 S. St Francis Dr.
Santa Fe, NM 87505

CONDITIONS

Action 74953

CONDITIONS

Operator: Franklin Mountain Energy LLC 44 Cook Street Denver, CO 80206	OGRID: 373910
	Action Number: 74953
	Action Type: [C-103] NOI Change of Plans (C-103A)

CONDITIONS

Created By	Condition	Condition Date
pkautz	None	1/25/2022