



U.S. Department of the Interior  
BUREAU OF LAND MANAGEMENT

## Sundry Print Report

02/16/2021

<b>Well Name:</b> DURHAM SHELL FEDERAL COM	<b>Well Location:</b> T21S / R24E / SEC 8 / NWNW /	<b>County or Parish/State:</b> EDDY / NM
<b>Well Number:</b> 1	<b>Type of Well:</b> CONVENTIONAL GAS WELL	<b>Allottee or Tribe Name:</b>
<b>Lease Number:</b> NMNM0486483	<b>Unit or CA Name:</b> DURHAM SHELL FED COM	<b>Unit or CA Number:</b> NMNM91058
<b>US Well Number:</b> 300152288200S1	<b>Well Status:</b> Producing Gas Well	<b>Operator:</b> FASKEN OIL & RANCH LIMITED

Accepted for record – NMOCD gc 1/31/2022

## Subsequent Report

**Type of Submission:** Subsequent Report**Type of Action:** Plug and Abandonment**Date Sundry Submitted:** 02/02/2021**Time Sundry Submitted:** 01:52**Date Operation Actually Began:** 01/07/2021**Actual Procedure:** See attached daily activities.

## SR Attachments

## Actual Procedure

Durham\_Shell\_Fed\_1\_Plug\_and\_Abandon\_20210202135224.pdf

## Operator Certification

*I certify that the foregoing is true and correct. Title 18 U.S.C. Section 1001 and Title 43 U.S.C. Section 1212, make it a crime for any person knowingly and willfully to make to any department or agency of the United States any false, fictitious or fraudulent statements or representations as to any matter within its jurisdiction. Electronic submission of Sundry Notices through this system satisfies regulations requiring a submission of Form 3160-5 or a Sundry Notice.*

**Operator Electronic Signature:** GUELKER**Signed on:** FEB 02, 2021 01:52 PM**Name:** FASKEN OIL & RANCH LIMITED**Title:** Regulatory Analyst**Street Address:** 6101 Holiday Hill Road**City:** Midland**State:** TX**Phone:** (432) 687-1777**Email address:** addisonl@forl.com

## Field Representative

**Representative Name:****Street Address:****City:****State:****Zip:****Phone:****Email address:**

**Well Name:** DURHAM SHELL  
FEDERAL COM**Well Location:** T21S / R24E / SEC 8 /  
NWNE /**County or Parish/State:** EDDY /  
NM**Well Number:** 1**Type of Well:** CONVENTIONAL GAS  
WELL**Allottee or Tribe Name:****Lease Number:** NMNM0486483**Unit or CA Name:** DURHAM SHELL  
FED COM**Unit or CA Number:**  
NMNM91058**US Well Number:** 300152288200S1**Well Status:** Producing Gas Well**Operator:** FASKEN OIL &  
RANCH LIMITED**BLM Point of Contact****BLM POC Name:** ZOTA M STEVENS**BLM POC Title:** Petroleum Engineer**BLM POC Phone:** 5752345998**BLM POC Email Address:** ZSTEVENS@BLM.GOV**Disposition:** Accepted**Disposition Date:** 02/16/2021**Signature:** Zota Stevens

**Durham Shell Federal No. 1 – Plug and Abandon**

1/7/21

SICP-15 psi, SITP-0 psi. RU Basic pump truck and loaded tbg/csg annulus w/ 23 bbls of 2% KCL water and pumped additional 5 bbls (28 bbls total) at 1.0 bpm w/ 300 psi. ISIP200 psi. Bled down pressure and SWI. Contact BLM (Gilbert Espinoza) at 12:00 pm CDT with intent on moving in plugging equipment. BCM WS started moving in equipment at 1:30 pm CDT.

1/11/21

Tubing took weight at 8406' w/ EOT at 8202' and CIBP will need to be set at 8475'. POW and tallied 267 jts of 2-3/8" EUE 8rd L80 tubing, 3-3/4" T2 TOSSD w/ 1.81" "F" PN, 4-1/2" x 2-3/8" Watson AS-1 packer, 2-3/8" EUE 8rd J55 perf tubing sub and 1 jt 2-3/8" EUE 8rd L80 tubing and 2-3/8" 8rd seating nipple.

1/12/21

Found hole in tubing on jt #208 (6508' FS) and RD Tubing Testers. Reciprocated scraper through plug set area from 8447'-8505', w/ top perf 8525' and w/ CIBP depth to be set at 8475'.

1/13/21

Dropped setting ball, pumped 28 bbls mud laden brine to loaded and pressured up to 1200 psi and set CIBP at 8476'. Pumped 42 bbls mud laden brine and had circulation from 9-5/8" surface valve. Displace well w/ total 135 bbls mud laden brine. Pumped 5 bfw spacer, mixed and spotted 25 sx Class "H" cement (s.w. 16.8 ppg, yield 1.17 cuft/sk), 5 bfw spacer and displaced w/ 26.0 bbls mud laden brine water and POW with 47 jts w/ 6990'. SWI and SDON, WOC.

1/14/21

RIW w/ 38 jts and tagged at 8114'. Pumped 2 bbw and had full circulation from 9-5/8" surface valve. Contacted BLM (Chase Messen) and was given approval to proceed with plugging procedure. POW and LD 48 jts w/ EOT at 6683' (213 jts). Pumped 5 bfw spacer, mixed and spotted 25 sx Class "C" cement (s.w. 14.8 ppg, yield 1.32 cuft/sk), 5 bfw spacer and displaced with 20.5 bbls mud laden brine water. POW with 46 jts to 5115' and WOC 4 hrs. RIW w/ 36 jts and tagged at 6240'. At 3:00 PM CDT, contacted BLM (Chase Messen) and was given approval to proceed with plugging procedure. POW and LD 87 jts and stood back 126 jts in derrick. RIW w/ 4-1/2" AD-1 packer and 127 jts and set packer at 3985'. Loaded tubing w/ 9 bbw and attempted to test from 3985'-6240' w/ communication from 9-5/8" surface valve and established rate at 1.5 bpm at 400 psi. Pressure up on tbg/csg annulus from surface to 3985' to 600 psi w/ no pressure loss. SWI and SDON.

1/15/21

8:00 AM CDT, contacted BLM (Chase Messen) was given approval to proceed with plugging procedure. RIW w/ 1-3/8" string shot through tubing and perforated 4-1/2" casing at 4324' WLD w/ 4 shots, POW all shots fired. Set packer at 3953', mixed and spotted 50 sx Class "C" cement (s.w. 14.8 ppg, yield 1.32 cuft/sk), 5 bfw spacer and displaced with 15.5 bbls mud laden brine water w/ full circulation from 9-5/8" casing. SWI and WOC 4 hrs. RIW and tagged at 4181' at 2:45 PM CDT, contacted BLM (Chase Messen) with tag update and was given approval to proceed with plugging procedure. POW and LD 36 jts. RIW w/ 1-3/8" string shot through tubing and perforated 4-1/2" casing at 3250' WLD w/ 4 shots, POW w/ WL w/ all shots fired. Set packer at 2861', mixed and spotted 65 sx Class "C" cement (s.w. 14.8 ppg, yield 1.32 cuft/sk), 5 bfw spacer displaced with 9 bbls mud laden brine water w/ full circulation from 9-5/8" casing. SWI and SDON WOC.

1/19/21

Released packer and RIW and tagged at 3094'. 8:35 AM CDT, contacted BLM (Chase Messen) with tag point and was given approval to proceed with plugging procedure. POW and LD 66 jts. RIW w/ 1-3/8" string shot through tubing and perforated 4-1/2" casing at 2645' WLD w/ 4 shots, POW w/ WL w/ all shots fired. Set packer at 2290', mixed and pumped, 5 bfw spacer, 45 sx Class "C" cement (s.w. 14.8 ppg, yield 1.32 cuft/sk), 5 bfw spacer and displaced with 6.5 bbls mud laden brine water w/ full circulation from 9-5/8" casing and WOC 4 hrs. Released

packer, RIW w/ tubing and tagged at 2510' (plug #5). At 3:15 PM CDT, contacted BLM (Chase Messen) with tag update and was given approval to proceed with plugging procedure. POW and LD 58 jts. RIW w/ 1-3/8" string shot through tubing and perforated 4-1/2" casing at 1000' WLD w/ 4 shots and POW all shots fired. Set packer at 657' and mixed and pumped, 2 bfw spacer, 34 sx Class "C" cement (s.w. 14.8 ppg, yield 1.32 cuft/sk), 2 bfw spacer displaced with 3 bbls mud laden brine water w/ full circulation from 9-5/8" casing. SWI and SDON WOC.

1/20/21

9-5/8" SICP-0 psi, 4-1/2" SICP-0 psi, SITP-0 psi. Released packer and RIW w/ tubing and tagged at 840' (plug #6). At 8:00 AM CDT, contacted BLM (Chase Messen) with tag update and was given approval to proceed with plugging procedure. POW and LD 27 jts, ND BOP, and NU capping flange. RIW w/ 1-3/8" string shot and perforated 4-1/2" casing at 450' WLD w/ 4 shots, POW w/ all shots fired and RDWL. Established circulation and mixed and pumped, 145 sx Class "C" cement (s.w. 14.8 ppg, yield 1.32 cuft/sk) w/ full circulation from 9-5/8" casing w/ good cement to surface from 9-5/8", SI surface valve and squeezed 4-1/2" to 600 psi and SWI. WOC 4 hrs, removed capping flange and verified cement cap 14" from surface. RDPU and released rental equipment and started moving out plugging equipment. Contractor picked up 268 jts of 2-3/8" EUE 8rd L80 tubing to be hauled to Midland. SWI and SDON. Scheduled to cut off wellhead on 1/21/21.

1/21/21

Found light bubble coming from 9-5/8" surface valve. At 8:30 am CDT, contacted BLM (Chase Messen) with update, decision was made to let well set open for 24 hrs to see if everything will settle out.

1/22/21

No activity, awaiting wellhead cutoff. Found cement to surface. BCM tech tested gas levels and showed 25 ppm. Poured water into surface valve and standing full w/ slight bubbles. Notified Gilbert Cordero w/ OCD and plan to let gas bleed over the weekend and test Monday morning and perform cutoff.

1/25/21

No activity, awaiting wellhead cutoff. BCM rep tested surface casing and showed 10 LEL, minimum for approved cutoff is 10 LEL. Surface casing held water without bubbling and notified BLM rep Chase Morrow and he approved cut off. Cut off scheduled for 1/26/2021.

1/26/21

No activity, awaiting on wellhead cutoff. BCM crew tested for Covid-19 and waiting on results at report time. Chase Messen w/ BLM was notified. Plan to perform cutoff on 1/27/21.

1/27/21

BCM crew and equipment arrived on location at 12:40 PM MST. BLM representative Chase Messen witnessed cement to surface and no gas from casing. Welded cut off mast anchors and WH and welded plate onto casing. Installed 1" 2000 psi valve on top of plate, closed valve and removed handle. Filled bottle w/ grease and placed over valve. Installed 4' marker jt and backhoe backfilled holes of mast anchors and covered casing. WELL PLUGGED AND ABANDONED.

**Fasken Oil and Ranch, LTD.****DAILY OPERATIONS REPORT****Durham Shell Federal # 1**

Printed Jan 28, 2021 Page 1 of 6

**Durham Shell Federal # 1**

Eddy Co., NM

Well ID: DU8000

Zone: 1 Field: Indian Basin

**AFE # 4024****P&A well.**

Jan 7, 2021 Thursday (Day 1)

SICP-15 psi, SITP-0 psi. RU Basic pump truck and loaded tbg/csg annulus w/ 23 bbls of 2% KCL water and pumped additional 5 bbls (28 bbls total) at 1.0 bpm w/ 300 psi. ISIP-200 psi. Bled down pressure and SWI. Contact BLM (Gilbert Espinoza) at 12:00 pm CDT with intent on moving in plugging equipment. BCM WS started moving in equipment at 1:30 pm CDT. (SLT)

Daily Cost:

Cum. Cost: AFE Cum. Cost:

AFE Amount:

Jan 8, 2021 Friday (Day 2)

SICP-120 psi, SITP-0 psi. RUPU (BCM WS, Rig No. 5) and finished setting plugging equipment. Contractor delivered and set catwalk and pipe racks (TWS-Lovington NM). Gang installed secondary valves on wellhead. Crew dug out cellar. Ready to start plugging procedure on 1/11/21. SWI and SDON. (SLT)

Daily Cost:

Cum. Cost: AFE Cum. Cost:

AFE Amount:

Jan 9, 2021 Saturday (Day 3)

No activity. (SLT)

Daily Cost:

Cum. Cost: AFE Cum. Cost:

AFE Amount:

Jan 10, 2021 Sunday (Day 4)

No activity. (SLT)

Daily Cost:

Cum. Cost: AFE Cum. Cost:

AFE Amount:

Jan 11, 2021 Monday (Day 5)

SICP- 80 psi, SITP- 0 psi. Crew running late due to weather. Took delivery of 10 jts of 2-3/8" L80 work string tubing. NDWH and NU 3k manual BCM BOP. worked packer for 1 hr and released packer. Tubing took weight at 8406' w/ EOT at 8202' and CIBP will need to be set at 8475'. POW and tallied 267 jts of 2-3/8" EUE 8rd L80 tubing, 3-3/4" T2 TOSSD w/ 1.81" "F" PN, 4-1/2" x 2-3/8" Watson AS-1 packer, 2-3/8" EUE 8rd J55 perf tubing sub and 1 jt 2-3/8" EUE 8rd L80 tubing and 2-3/8" 8rd seating nipple. Found BHA w/ scale. SWI and SDON. (SLT)

Daily Cost:

Cum. Cost:

AFE Amount:

# Fasken Oil and Ranch, LTD. DAILY OPERATIONS REPORT

## Durham Shell Federal # 1

Printed Jan 28, 2021 Page 2 of 6

**Durham Shell Federal # 1**
**Eddy Co., NM**
**Well ID: DU8000**
**Zone: 1 Field: Indian Basin**
**Jan 12, 2021 Tuesday (Day 6)**

SICP-0 psi. RU Hydro Test Tubing Testers and RIW w/ 3-7/8" skirted bit (used), 4-1/2" casing scraper, xo, 2-3/8" seating nipple and 267 jts of 2-3/8" L80 tubing testing to 6000 psi above the slips. Found hole in tubing on jt #208 (6508' FS), resumed testing remaining tubing and RD Tubing Testers. Reciprocated scraper through plug set area from 8447'-8505', w/ top perf 8525' and w/ CIBP depth to be set at 8475'. POW w/ 271 jts and LD bit and scraper. SWI and SDON. (SLT)

Daily Cost:

Cum. Cost: AFE Cum. Cost:

AFE Amount:

**Jan 13, 2021 Wednesday (Day 7)**

SICP- 0 psi. RIW w/ 4-1/2" CIBP w/ 270 jts of 2-3/8" tubing and 18' 2-3/8" tubing subs w/ EOT at 8476' tubing tally. Dropped setting ball, pumped 28 bbls mud laden brine to loaded and pressured up to 1200 psi and set CIBP at 8476'. Pumped 42 bbls mud laden brine and had circulation from 9-5/8" surface valve. Displace well w/ total 135 bbls mud laden brine. Pumped 5 bfw spacer, mixed and spotted 25 sx Class "H" cement (s.w. 16.8 ppg, yield 1.17 cuft/sk), 5 bfw spacer and displaced w/ 26.0 bbls mud laden brine water and POW with 47 jts w/ 6990'. SWI and SDON, WOC. (SLT)

Daily Cost:

Cum. Cost: AFE Cum. Cost:

AFE Amount:

**Jan 14, 2021 Thursday (Day 8)**

9-5/8" SICP- 0 psi, 4-1/2" SICP- 0 psi, SITP- light vac. RIW w/ 38 jts and tagged at 8114'. Pumped 2 bbw and had full circulation from 9-5/8" surface valve. Contacted BLM (Chase Messen) and was given approval to proceed with plugging procedure. POW and LD 48 jts w/ EOT at 6683' (213 jts). Pumped 5 bfw spacer, mixed and spotted 25 sx Class "C" cement (s.w. 14.8 ppg, yield 1.32 cuft/sk), 5 bfw spacer and displaced with 20.5 bbls mud laden brine water. POW with 46 jts to 5115' and WOC 4 hrs. RIW w/ 36 jts and tagged at 6240'. At 3:00 PM CDT, contacted BLM (Chase Messen) and was given approval to proceed with plugging procedure. POW and LD 87 jts and stood back 126 jts in derrick. RIW w/ 4-1/2" AD-1 packer and 127 jts and set packer at 3985'. Loaded tubing w/ 9 bbw and attempted to test from 3985'-6240' w/ communication from 9-5/8" surface valve and established rate at 1.5 bpm at 400 psi. Pressure up on tbg/csg annulus from surface to 3985' to 600 psi w/ no pressure loss. SWI and SDON. (SLT)

Daily Cost:

Cum. Cost: AFE Cum. Cost:

AFE Amount:

**Fasken Oil and Ranch, LTD.****DAILY OPERATIONS REPORT****Durham Shell Federal # 1**

Printed Jan 28, 2021 Page 3 of 6

**Durham Shell Federal # 1**

Eddy Co., NM

Well ID: DU8000

Zone: 1 Field: Indian Basin

Jan 15, 2021 Friday (Day 9)

9-5/8" SICP-20 psi, 4-1/2" SICP-0 psi, SITP-0 psi. 8:00 AM CDT, contacted BLM (Chase Messen) was given approval to proceed with plugging procedure. RIW w/ 1-3/8" string shot through tubing and perforated 4-1/2" casing at 4324' WLD w/ 4 shots, POW all shots fired. Set packer at 3953', mixed and spotted 50 sx Class "C" cement (s.w. 14.8 ppg, yield 1.32 cuft/sk), 5 bfw spacer and displaced with 15.5 bbls mud laden brine water w/ full circulation from 9-5/8" casing. SWI and WOC 4 hrs. RIW and tagged at 4181' at 2:45 PM CDT, contacted BLM (Chase Messen) with tag update and was given approval to proceed with plugging procedure. POW and LD 36 jts. RIW w/ 1-3/8" string shot through tubing and perforated 4-1/2" casing at 3250' WLD w/ 4 shots, POW w/ WL w/ all shots fired. Set packer at 2861', mixed and spotted 65 sx Class "C" cement (s.w. 14.8 ppg, yield 1.32 cuft/sk), 5 bfw spacer displaced with 9 bbls mud laden brine water w/ full circulation from 9-5/8" casing. SWI and SDON WOC. (SLT)

Daily Cost:

Cum. Cost: AFE Cum. Cost:

AFE Amount:

Jan 16, 2021 Saturday (Day 10)

No activity and WOC. (SLT)

Daily Cost:

Cum. Cost: AFE Cum. Cost:

AFE Amount:

Jan 17, 2021 Sunday (Day 11)

No activity and WOC. (SLT)

Daily Cost:

Cum. Cost: AFE Cum. Cost:

AFE Amount:

Jan 18, 2021 Monday (Day 12)

No activity and WOC. (SLT)

Daily Cost:

Cum. Cost: AFE Cum. Cost:

AFE Amount:

# Fasken Oil and Ranch, LTD.

## DAILY OPERATIONS REPORT

### Durham Shell Federal # 1

Printed Jan 28, 2021 Page 4 of 6

**Durham Shell Federal # 1**

Eddy Co., NM

Well ID: DU8000

Zone: 1 Field: Indian Basin

Jan 19, 2021 Tuesday (Day 13)

9-5/8" SICP-0 psi, 4-1/2" SICP-0 psi, SITP-0 psi. Released packer and RIW and tagged at 3094'. 8:35 AM CDT, contacted BLM (Chase Messen) with tag point and was given approval to proceed with plugging procedure. POW and LD 66 jts. RIW w/ 1-3/8" string shot through tubing and perforated 4-1/2" casing at 2645' WLD w/ 4 shots, POW w/ WL w/ all shots fired. Set packer at 2290', mixed and pumped, 5 bfw spacer, 45 sx Class "C" cement (s.w. 14.8 ppg, yield 1.32 cuft/sk), 5 bfw spacer and displaced with 6.5 bbls mud laden brine water w/ full circulation from 9-5/8" casing and WOC 4 hrs. Released packer, RIW w/ tubing and tagged at 2510' (plug #5). At 3:15 PM CDT, contacted BLM (Chase Messen) with tag update and was given approval to proceed with plugging procedure. POW and LD 58 jts. RIW w/ 1-3/8" string shot through tubing and perforated 4-1/2" casing at 1000' WLD w/ 4 shots and POW all shots fired. Set packer at 657' and mixed and pumped, 2 bfw spacer, 34 sx Class "C" cement (s.w. 14.8 ppg, yield 1.32 cuft/sk), 2 bfw spacer displaced with 3 bbls mud laden brine water w/ full circulation from 9-5/8" casing. SWI and SDON WOC. (SLT)

Daily Cost:

Cum. Cost: '40 AFE Cum. Cost:

AFE Amount:

Jan 20, 2021 Wednesday (Day 14)

9-5/8" SICP-0 psi, 4-1/2" SICP-0 psi, SITP-0 psi. Released packer and RIW w/ tubing and tagged at 840' (plug #6). At 8:00 AM CDT, contacted BLM (Chase Messen) with tag update and was given approval to proceed with plugging procedure. POW and LD 27 jts, ND BOP, and NU capping flange. RIW w/ 1-3/8" string shot and perforated 4-1/2" casing at 450' WLD w/ 4 shots, POW w/ all shots fired and RDWL. Established circulation and mixed and pumped, 145 sx Class "C" cement (s.w. 14.8 ppg, yield 1.32 cuft/sk) w/ full circulation from 9-5/8" casing w/ good cement to surface from 9-5/8", SI surface valve and squeezed 4-1/2" to 600 psi and SWI. WOC 4 hrs, removed capping flange and verified cement cap 14" from surface. RDPU and released rental equipment and started moving out plugging equipment. Contractor picked up 268 jts of 2-3/8" EUE 8rd L80 tubing to be hauled to Midland. SWI and SDON. Scheduled to cut off wellhead on 1/21/21. (SLT)

Daily Cost:

Cum. Cost: FE Cum. Cost:

AFE Amount:

Jan 21, 2021 Thursday (Day 15)

9-5/8" SICP-0 psi, 4-1/2" SICP-0 psi. Found light bubble coming from 9-5/8" surface valve. At 8:30 am CDT, contacted BLM (Chase Messen) with update, decision was made to let well set open for 24 hrs to see if everything will settle out. (SLT)

Daily Cost:

Cum. Cost: AFE Cum. Cost:

AFE Amount:

**Fasken Oil and Ranch, LTD.**  
**DAILY OPERATIONS REPORT****Durham Shell Federal # 1**

Printed Jan 28, 2021 Page 5 of 6

**Durham Shell Federal # 1**

Eddy Co., NM

Well ID: DU8000

Zone: 1 Field: Indian Basin

Jan 22, 2021 Friday (Day 16)

No activity, awaiting wellhead cutoff. Found cement to surface. BCM tech tested gas levels and showed 25 ppm. Poured water into surface valve and standing full w/ slight bubbles. Notified Gilbert Cordero w/ OCD and plan to let gas bleed over the weekend and test Monday morning and perform cutoff. (MG)

Daily Cost:

Cum. Cost:

AFE Cum. Cost:

AFE Amount:

Jan 23, 2021 Saturday (Day 17)

No activity, waiting on WH cut off. (MG)

Daily Cost:

Cum. Cost:

AFE Cum. Cost:

AFE Amount:

Jan 24, 2021 Sunday (Day 18)

No activity, waiting on WH cut off. (MG)

Daily Cost:

Cum. Cost:

AFE Cum. Cost:

AFE Amount:

Jan 25, 2021 Monday (Day 19)

No activity, awaiting wellhead cutoff. BCM rep tested surface casing and showed 10 LEL, minimum for approved cutoff is 10 LEL. Surface casing held water without bubbling and notified BLM rep Chase Morrow and he approved cut off. Cut off scheduled for 1/26/2021. (MG)

Daily Cost:

Cum. Cost:

AFE Cum. Cost:

AFE Amount:

Jan 26, 2021 Tuesday (Day 20)

No activity, awaiting on wellhead cutoff. BCM crew tested for Covid-19 and waiting on results at report time. Chase Messen w/ BLM was notified. Plan to perform cutoff on 1/27/21. (MG)

Daily Cost:

Cum. Cost:

AFE Cum. Cost:

AFE Amount:

**Fasken Oil and Ranch, LTD.****DAILY OPERATIONS REPORT****Durham Shell Federal # 1**

Printed Jan 28, 2021 Page 6 of 6

**Durham Shell Federal # 1**

Eddy Co., NM

Well ID: DU8000

Zone: 1 Field: Indian Basin

Jan 27, 2021 Wednesday (Day 21)

BCM crew and equipment arrived on location at 12:40 PM MST. BLM representative Chase Messen witnessed cement to surface and no gas from casing. welded cut off mast anchors and WH and welded plate onto casing. Installed 1" 2000 psi valve on top of plate, closed valve and removed handle. Filled bottle w/ grease and placed over valve. Installed 4' marker jt and backhoe backfilled holes of mast anchors and covered casing. WELL PLUGGED AND ABANDONED. FINAL REPORT. (MG)

Daily Cost:

Cum. Cost:                      AFE Cum. Cost:

AFE Amount:

## Durham Shell Federal Com No. 1

as of 9-12-1994

GL: 4137', KB: 4150.5'

TopsOperator: **Fasken Oil and Ranch, Ltd.**

Location: 660' FNL and 2010' FEL

Sec 8, T21S, R24E

Eddy County, NM

Compl.: 9/29/1994 (Re-entry)

API #: 30-015-22882

Orig. Oper Durham, Inc.-Shell Fed #1 P&A 8-8-79 **San Andres 950'**

TD: 8.890'

PBDT: 8.941'

Casing: 13-3/8" 40# J-55 @ 400'

w/425sx "C"

TOC surf

9-5/8" 32&amp;36# J-55 @ 3200' KB

w/1075 sx "C"

TOC surf

4-1/2" 11.6# N-80 &amp; J-55 @ 8,981' KB

w/550sxHL "H" w/3#KCL/sk +350sx 50/50 Poz.

TOC 4400' by Temp

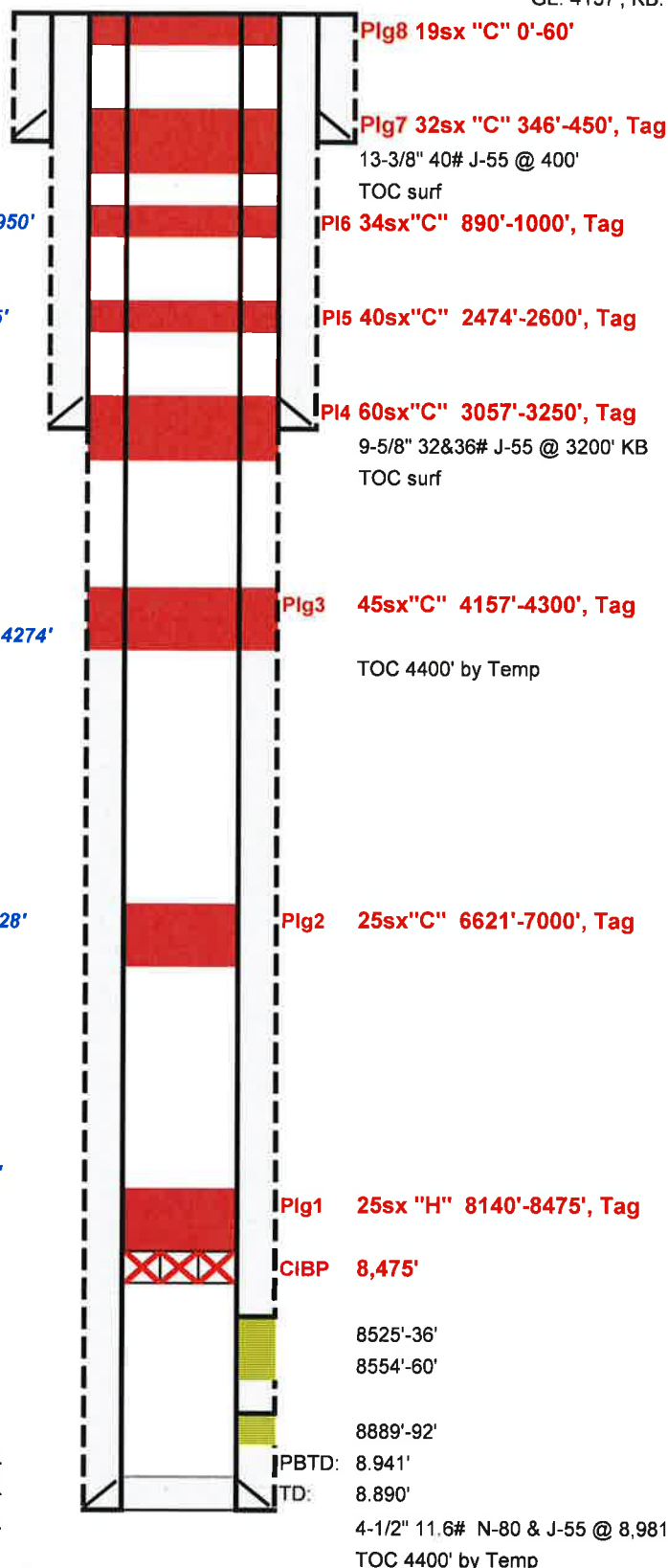
**Glorieta 2595'****Yeso 2816'****Bone Spring 4274'****Proposed P&A - 2-18-2020**

19sx"C"	0-60'	Plg #8, Surface	
32sx"C"	346'-450', Tag	Plg #7, Perf & Sqz, TAG	
34sx"C"	890'-1000', Tag	Plg #6, Perf & Sqz, TAG	
40sx"C"	2474'-2600', Tag	Plg #5, Perf & Sqz, TAG	
60sx"C"	3057'-3250', Tag	Plg #4, Perf & Sqz, TAG	
45sx"C"	4157'-4300', Tag	Plg #3, Perf & Sqz, Tag	
25sx"C"	6621'-7000', Tag	Plg #2, tag	
25sx"H"	8140'-8475', Tag	Plg #1, Tag	<b>Wolfcamp 6628'</b>
CIBP:	8,475'		

**Cisco 7865'****Canyon 8180'****Strawn 8434'**

Perfs:	Strawn		
	8525'-36'	12h, 0.40"	9/30/1994
	8554'-60'	7h, 0.40"	9/30/1994
	8889'-92'	4h, 0.40"	9/30/1994

Status: SI 1-3-20 with suspected casing leak.



cwb

1/28/2022

DurhamShellFed1 wb diagram

**District I**  
1625 N. French Dr., Hobbs, NM 88240  
Phone:(575) 393-6161 Fax:(575) 393-0720  
**District II**  
811 S. First St., Artesia, NM 88210  
Phone:(575) 748-1283 Fax:(575) 748-9720  
**District III**  
1000 Rio Brazos Rd., Aztec, NM 87410  
Phone:(505) 334-6178 Fax:(505) 334-6170  
**District IV**  
1220 S. St Francis Dr., Santa Fe, NM 87505  
Phone:(505) 476-3470 Fax:(505) 476-3462

State of New Mexico  
Energy, Minerals and Natural Resources  
Oil Conservation Division  
1220 S. St Francis Dr.  
Santa Fe, NM 87505

CONDITIONS  
  
Action 76548

CONDITIONS

Operator: FASKEN OIL & RANCH LTD 6101 Holiday Hill Rd Midland, TX 79707	OGRID: 151416
	Action Number: 76548
	Action Type: [C-103] Sub. Plugging (C-103P)

CONDITIONS

Created By	Condition	Condition Date
gcordero	None	1/31/2022