

District I
1625 N. French Dr., Hobbs, NM 88240
Phone: (575) 393-6161 Fax: (575) 393-0720

District II
811 S. First St., Artesia, NM 88210
Phone: (575) 748-1283 Fax: (575) 748-9720

District III
1000 Rio Brazos Road, Aztec, NM 87410
Phone: (505) 334-6178 Fax: (505) 334-6170

District IV
1220 S. St. Francis Dr., Santa Fe, NM 87505
Phone: (505) 476-3460 Fax: (505) 476-3462

State of New Mexico
Energy, Minerals & Natural Resources Department
OIL CONSERVATION DIVISION
1220 South St. Francis Dr.
Santa Fe, NM 87505

Form C-102
Revised August 1, 2011
Submit one copy to appropriate
District Office

AMENDED REPORT

WELL LOCATION AND ACREAGE DEDICATION PLAT

¹ API Number		² Pool Code 28434	³ Pool Name GRAMA RIDGE;BONE SPRING, NORTH	
⁴ Property Code	⁵ Property Name ASADERO 3 STATE COM			⁶ Well Number 505H
⁷ OGRID No. 372165	⁸ Operator Name CENTENNIAL RESOURCE PRODUCTION, LLC			⁹ Elevation 3694.9'

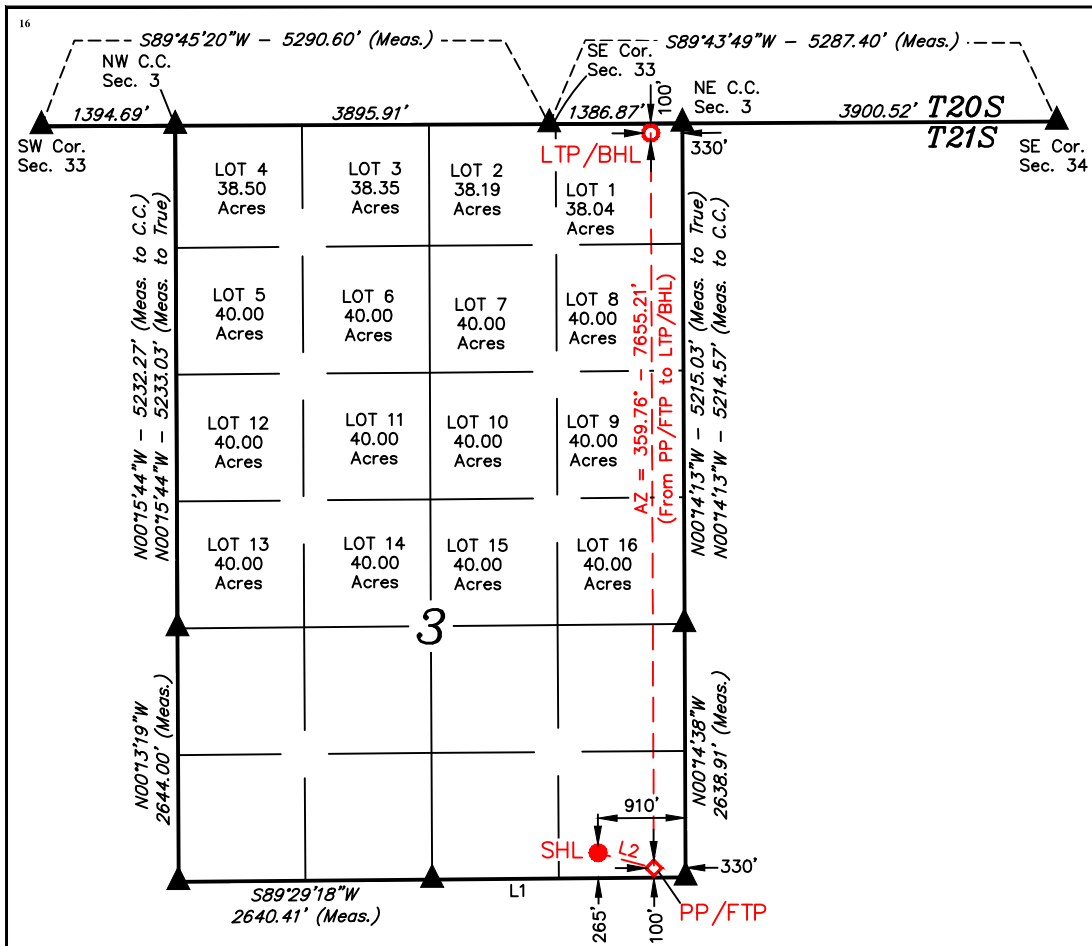
¹⁰Surface Location

UL or lot no. P	Section 3	Township 21S	Range 34E	Lot Idn	Feet from the 265	North/South line SOUTH	Feet from the 910	East/West line EAST	County LEA
--------------------	--------------	-----------------	--------------	---------	----------------------	---------------------------	----------------------	------------------------	---------------

¹¹ Bottom Hole Location If Different From Surface

UL or lot no. 1	Section 3	Township 21S	Range 34E	Lot Idn	Feet from the 100	North/South line NORTH	Feet from the 330	East/West line EAST	County LEA
¹² Dedicated Acres 476.23		¹³ Joint or Infill		¹⁴ Consolidation Code		¹⁵ Order No.			

No allowable will be assigned to this completion until all interests have been consolidated or a non-standard unit has been approved by the division.



LINE TABLE		
LINE	DIRECTION	LENGTH
L1	S89°30'30"W	2641.14'
L2	S74°35'36"E	602.33'

NOTE:

- Distances referenced on plat to section lines are perpendicular.
- Basis of Bearing is a Transverse Mercator Projection with a Central Meridian of W103°53'00" (NAD 83)



SCALE

DRAWN BY: C.D. 12-02-21

- = SURFACE HOLE LOCATION
 ◆ = PENETRATION POINT/FIRST TAKE POINT
 ○ = LAST TAKE POINT/BOTTOM HOLE LOCATION
 ▲ = SECTION CORNER LOCATED

17 OPERATOR CERTIFICATION

I hereby certify that the information contained herein is true and complete to the best of my knowledge and belief, and that this organization either owns a working interest or unleased mineral interest in the land including the proposed bottom hole location or has a right to drill this well at this location pursuant to a contract with an owner of such a mineral or working interest, or to a voluntary pooling agreement or a compulsory pooling order heretofore entered by the division.

Signature
Date

Ariana Solis

Printed Name _____

ariana.solis@cdevinc.com

E-mail Address

18 SURVEYOR CERTIFICATION

I hereby certify that the well location shown on this plat was plotted from field notes of actual surveys made by me or under my supervision, and that the same is true and correct to the best of my belief.

December 01, 2021

Date of Survey _____
Signature and Seal of Professional Surveyor: _____



Certificate Number:

District I

1625 N. French Dr., Hobbs, NM 88240
Phone:(575) 393-6161 Fax:(575) 393-0720

District II

811 S. First St., Artesia, NM 88210
Phone:(575) 748-1283 Fax:(575) 748-9720

District III

1000 Rio Brazos Rd., Aztec, NM 87410
Phone:(505) 334-6178 Fax:(505) 334-6170

District IV

1220 S. St Francis Dr., Santa Fe, NM 87505
Phone:(505) 476-3470 Fax:(505) 476-3462

State of New Mexico
Energy, Minerals and Natural Resources
Oil Conservation Division
1220 S. St Francis Dr.
Santa Fe, NM 87505

CONDITIONS

Action 87798

CONDITIONS

Operator: EOG RESOURCES INC P.O. Box 2267 Midland, TX 79702	OGRID: 7377
	Action Number: 87798
	Action Type: [C-101] BLM - Federal/Indian Land Lease (Form 3160-3)

CONDITIONS

Created By	Condition	Condition Date
pkautz	WRONG POOL SEE POOL COORECTION	3/11/2022
pkautz	Will require a File As Drilled C-102 and a Directional Survey with the C-104	3/11/2022
pkautz	Once the well is spud, to prevent ground water contamination through whole or partial conduits from the surface, the operator shall drill without interruption through the fresh water zone or zones and shall immediately set in cement the water protection string	3/11/2022
pkautz	Oil base muds are not to be used until fresh water zones are cased and cemented providing isolation from the oil or diesel. This includes synthetic oils. Oil based mud, drilling fluids and solids must be contained in a steel closed loop system	3/11/2022
pkautz	Cement is required to circulate on both surface and intermediate1 strings of casing	3/11/2022