

Office
District I - (575) 393-6161
1625 N. French Dr., Hobbs, NM 88240
District II - (575) 748-1283
811 S. First St., Artesia, NM 88210
District III - (505) 334-6178
1000 Rio Brazos Rd., Aztec, NM 87410
District IV - (505) 476-3460
1220 S. St. Francis Dr., Santa Fe, NM
87505

Energy, Minerals and Natural Resources

Revised July 18, 2013

OIL CONSERVATION DIVISION
1220 South St. Francis Dr.
Santa Fe, NM 87505

WELL API NO.

30-025-02690

5. Indicate Type of Lease

STATE ☒ FEE ☐

6. State Oil & Gas Lease No.

7. Lease Name or Unit Agreement Name

Cabot Q State SWD

8. Well Number #1

9. OGRID Number

151416

10. Pool name or Wildcat

SWD; San Andres

SUNDRY NOTICES AND REPORTS ON WELLS

(DO NOT USE THIS FORM FOR PROPOSALS TO DRILL OR TO DEEPEN OR PLUG BACK TO A DIFFERENT RESERVOIR. USE "APPLICATION FOR PERMIT" (FORM C-101) FOR SUCH PROPOSALS.)

1. Type of Well: Oil Well ☐ Gas Well ☒ Other

2. Name of Operator

Fasken Oil and Ranch, Ltd.

3. Address of Operator

6101 Holiday Hill Road, Midland, TX 79707

4. Well Location

Unit Letter L : 1980 feet from the S line and 560 feet from the W line
Section 7 Township 15S Range 35E NMPM County Lea

11. Elevation (Show whether DR, RKB, RT, GR, etc.)

4053' GR

12. Check Appropriate Box to Indicate Nature of Notice, Report or Other Data

NOTICE OF INTENTION TO:

PERFORM REMEDIAL WORK ☐ PLUG AND ABANDON ☐TEMPORARILY ABANDON ☐ CHANGE PLANS ☐PULL OR ALTER CASING ☐ MULTIPLE COMPL ☐DOWNHOLE COMMINGLE ☐CLOSED-LOOP SYSTEM ☐OTHER: ☐

SUBSEQUENT REPORT OF:

REMEDIAL WORK ☐ ALTERING CASING ☐COMMENCE DRILLING OPNS. ☐ P AND A ☒CASING/CEMENT JOB ☐ PNR ☐OTHER: ☐

13. Describe proposed or completed operations. (Clearly state all pertinent details, and give pertinent dates, including estimated date of starting any proposed work). SEE RULE 19.15.7.14 NMAC. For Multiple Completions: Attach wellbore diagram of proposed completion or recompletion.

09/27/21 MIRU plugging equipment. Dug out cellar. Killed well. ND well head. 09/28/21 NU BOP. Pump'd 300 BBLS Brine to kill well. POH w/ tbg. RIH w/ 4 1/2" guage ring, tagged @ 4712'. Guage ring stuck in hole. 09/29/21 RIH w/ overshot, fished guage ring & collar locator out of hole. RIH w/ scraper and drill bit to 4786'. RU power swivel & washed over to 4886'. 09/30/21-10/01/21 Washed down to 5041'. POH/ RIH w/ drill bit, drilled from 4794-5054' Worked tbg to 5341'. Spotted 35 sx class C cmt @ 5341-4987'. WOC. 10/04/21 Tagged plug @ 5031'. Pressure tested csg, held 500 PSI. Spotted 26 sx class C cmt @ 5031-4767'. WOC. Tagged plug @ 4904'. Spotted 25 sx class C cmt w/ 2% CACL @ 4904-4651'. WOC. 10/05/21 Tagged plug @ 4834'. Spotted 80 sx class C cmt @ 4834-4025'. WOC. Tagged plug @ 4671'. Perf'd @ 4650'. 10/06/21 Pressured up on perms to 1500 PSI. Spotted 25 sx class C cmt w/ 2% CACL @ 4670-4417'. WOC. Tagged plug @ 4607'. Circ'd hole w/ 300 bbls MLF. Spotted 25 sx class C cmt @ 4607-4354'. Spotted 30 sx class C cmt @ 3750-3644'. WOC. 10/07/21 Tagged plug @ 3644'. Spotted 100 sx class C cmt @ 400-100'. Perf'd @ 100'. Presured up on 9 5/8" to 800 PSI. ND BOP. Spotted 35 sx class C cmt @ 100' to surface. NU well head, pressured up to 500 PSI. Rigged down & moved off. 10/15/21 Moved in backhoe and welder, Cut off well head and anchors. Kerry Fortner w/ NM OCD verified cmt to surface via picture text message. Installed Above Ground Dry Hole Marker, backfilled cellar, cut off deadmen, cleaned location, & moved off.

Spud Date:

Rig Release Date:

I hereby certify that the information above is true and complete to the best of my knowledge and belief.

SIGNATURE Viola Vasquez TITLE Regulatory Analyst DATE 10/18/2021Type or print name Viola Vasquez E-mail address: violav@forl.com PHONE: 432-687-1777

For State Use Only

APPROVED BY: Kerry Fortner TITLE Compliance Officer A DATE 3/16/22

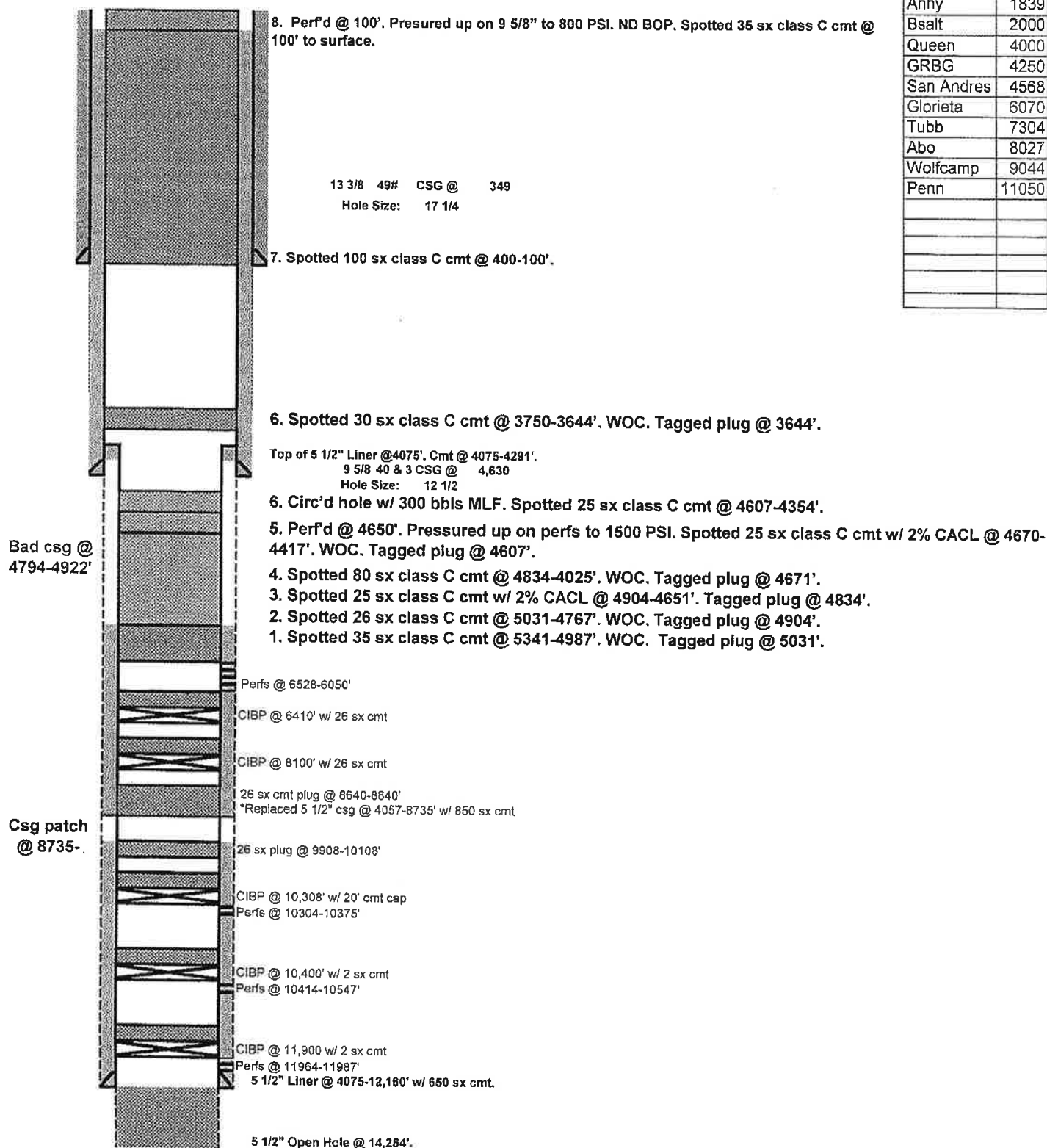
Conditions of Approval (if any):

575-263-6633

Fasken Oil & Ranch LTD		PLUGGED	
Author:	Abby-BCM	Well No.	#1
Well Name	Cabot Q SWD	API #:	30-025-02690
Field/Pool	SWD; San Andres	Location:	Sec 7, T15S, R35E
County	Lea		1980' FSL & 560' FWL
State	New Mexico	GL:	4053'
Spud Date			

Description	O.D.	Grade	Weight	Depth	Hole	Cmt Sx	TOC
Surface Csg	13 3/8		49#	349	17 1/4	400	0
Prod Csg	9 5/8		40 & 36#	4,630	12 1/2	2,300	100
Liner	5 1/2		17 & 20#	4075-12,145	8 3/4	650	5,522

Formation	Top
Anhy	1839
Bsalt	2000
Queen	4000
GRBG	4250
San Andres	4568
Glorieta	6070
Tubb	7304
Abo	8027
Wolfcamp	9044
Penn	11050



Well: **Cabot Q SWD No. 1**
 Operator: **Fasken Oil and Ranch, Ltd.**
 Location: **1980' FSL and 560' FWL**
Sec 7, Township 15S, Range 35 E
Lea County, NM

API #:

IP:

TD: 14,262

PBDT: 6,200

Casing:

		TOC / Type
13-3/8"	48# - 350sx	349' Surf / Circ
9-5/8"	36# - J-55 - 2,300sx	4,630' 100' / TS+Est
5-1/2"	14,15.5,17,20# - 650sx	12,160' 9,080' / Est

Casing patch 8,735'-8,739' &
 Replaced Casing 4,057'-8,735' (1956)

Hole Sizes		
17-1/2"	370'	
12-1/4"	4,633'	
7-7/8"	12,145'	
5-1/2"	14,254'	

TOC: 4,075'

Perfs:

		Top	Bottom
Wolfcamp	Plugged / 1965	10,304'	10,375'
	Plugged / 1965	10,414'	10,547'
Strawn	Plugged /	11,964'	11,987'
San Andres	Active	5628	6,050'

Casing patch 8,735'-8,739'

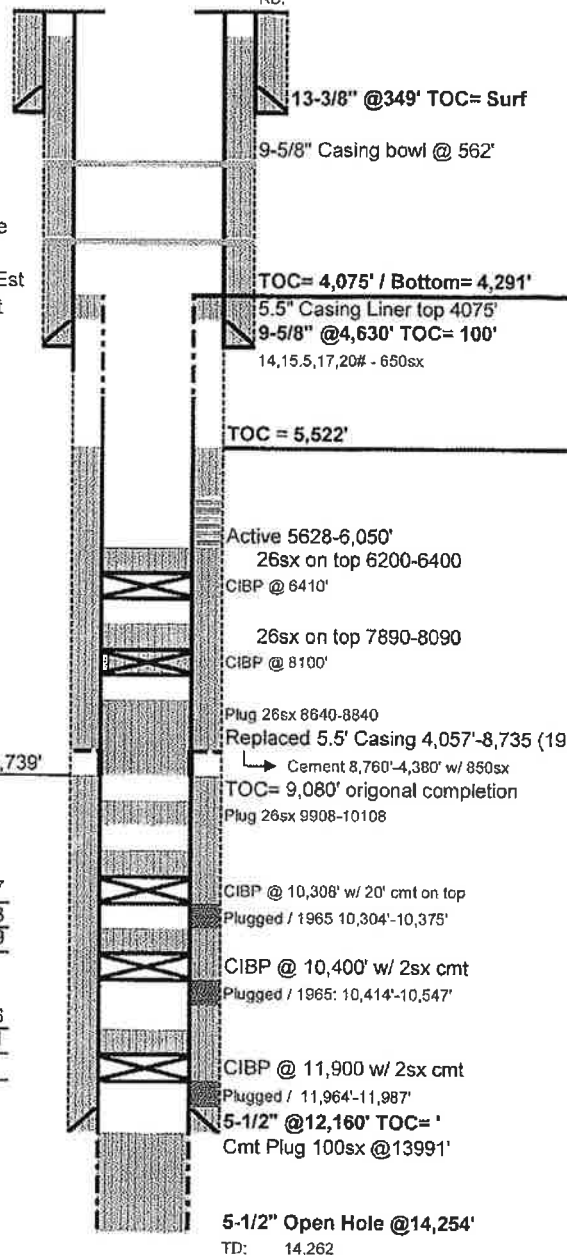
Length Top

Tubing:		
	Length	Top
2-7/8" IPC Tubing 15.7# J-55	5168.91	7.17
2-7/8" EUE 8rd Box x 2-3/8" EUE 8rd Pin SS X-O	0.41	5176.08
On-Off Tool	1.67	5176.49
Packer 4-1/2" PD x 2-3/8" TOSSD w/ SS top sub and NP body w/ SS 1.78 "F" profile nipple w/IPC ID and NP OD	7.25	5178.16
Mule Shoe Sub	1.65	5185.41
Set Below GL	7.17	
	5187.06	

ASOF 7-15-21

GL: 4041

KB:



Status: P 2 BO + 5 BW + 2 MCF (5/23/17)

5168' 2-7/8" IPC Tubing 15.7#

Fasken SWD

DAILY OPERATIONS REPORT

Cabot Q State SWD # 1

Printed Oct 18, 2021 Page 1 of 5

Cabot Q State SWD # 1

Lea Co., NM

Well ID: CA200

Zone: 1 Field: SWD, San Andres

AFE # 4207
Plug and Abandon.
Sep 27, 2021 Monday (Day 1)

SICP-0 psi, SITP-240 psi. Called Carlsbad NM BLM office at 9:09 am NM time, spoke with Kerry Fortner and informed of plans to begin plugging operations on well. BCM delivered and set plugging equipment and drove rig from Lamesa Tx to location and RUPU (BCM Rig No.5). Dug out well cellar and open tubing to closed top gas buster and flowed 140 bf in 45 min. RU BCM pump and pumped 50 bbw and well was static. Observed wrong size adapter was delivered and wait 45 min on correct size adapter. NDWH and NU 3k manual BOP. SWI and SDON. (VH)

Daily Cost: \$7,888

Cum. Cost: \$7,888 AFE Cum. Cost: \$7,888

AFE Amount:

Sep 28, 2021 Tuesday (Day 2)

SICP-0 psi, SITP-0 psi. NDWH and NU 3k manual BOP. Released packer and well began flowing up casing and pressure increased to 240 psi instantly. Reverse circulated 280 bbw and well was static. POW and LD 137 jts 2-7/8" EUE TK99 IPC tubing and LD packer. RU The WL Group truck, RU full lubricator and RIW w/ 4.5" gauge ring and sat down at 4712' and became stuck. Pumped 26 bbw and attempted to work tools free w/ no success. worked cable from 1000k to 3800k tension in 200 pound increments and cable pulled out rope socket. POW w/ cable and by WL depthometer w/ all cable was recovered. SWI and SDON. (VH)

Daily Cost: \$12,817

Cum. Cost: \$20,705 AFE Cum. Cost: \$20,705

AFE Amount:

Sep 29, 2021 Wednesday (Day 3)

SICP-0 psi. Calibrated and RIW w/ 4-3/8" overshot dressed w/ 3-1/8" grapple and cut lip cut and PU 147 jts 2-3/8" EUE 8rd N80 YB tubing and tagged TOF @4712'. Sat down 3 pts and fish slid down well to @4786'. Sat down 5 pts and felt slight PU. POW w/ tubing and LD gauge ring and CCL w/ all fish recovered from well. RIW w/ 4-5/8" drill bit and 5-1/2" csg scraper and 148 jts 2-3/8" tubing and tagged @4786'. RU power swivel, NU BIW stripper and pumped down casing at 2.5 bpm rate @100 psi. washed down from 4786' - 4886', drilled 3 bridges and lost circulation several times. Pumped a total of 160 bbls cut brine and only recovered 30 bf. PU 60', SWI and SDON. (VH)

Daily Cost: \$16,038

Cum. Cost: \$36,743 AFE Cum. Cost: \$36,743

AFE Amount:

Fasken SWD

DAILY OPERATIONS REPORT

Cabot Q State SWD # 1

Printed Oct 18, 2021 Page 2 of 5

Cabot Q State SWD # 1

Lea Co., NM

Well ID: CA200

Zone: 1 Field: SWD, San Andres

Sep 30, 2021 Thursday (Day 4)

SICP-0 psi, SITP-0 psi. Continued to wash down from 4886', pumping 1.5 bpm rate at 150 psi and @ 4982' and well began to circulate. Drilled down to 5047' and recovered spring from csg scraper in returns. Circulated well clean, LD power swivel and ND stripper head. POW w/ 156 jts 2-3/8" EUE 8rd N80 YB tubing and discovered retainer ring broke off from scraper and left 6 blades in well. Waited 1 hr on storm to pass. RIW w/ 4-5/8" drill bit and 6 3-1/8" DC, XO and 149 jt 2-3/8" tubing and tagged @4794'. Note: passed through liner top w/ very little restriction and pulled back out w/ no drag. RU power swivel, NU BIW stripper and established reverse circulation. Drilled down from 4794' - 5054', ran 8 jts freely and tagged hard @5309'. POW w/ 32 jts and left bit above liner. SWI and SDON. (VH)

Daily Cost: \$12,990

Cum. Cost: \$49,733 AFE Cum. Cost: \$49,733

AFE Amount:

Oct 1, 2021 Friday (Day 5)

SICP-0 psi, SITP-0 psi. RIW w/ 4-5/8" and 6 drill collars and resumed cleaning out to required depth. Tagged @ 4794' and took 15 min to get through bad spot and again @ 4922' and took 15 min to get through second bad spot. Called OCD at 9:30 am Tx time and spoke to Kerry Fortner requested permission to start plugging higher up well and request was denied. OCD did approve a cement spot @ 5580', then tag plug and test casing integrity. POW w/ tubing, drill collars and bit. RIW w/ mule shoe jt, perf sub and 2-3/8" N80 tubing. Tagged and passed through previous bad spots w/ some restriction and tagged @ 5339' and made no further progress. Called OCD at 3:30 pm Tx time, spoke to Kerry Fortner, received permission to spot 35 sx cement plug @ 5339', then tag plug and test casing integrity. Mixed and pumped 35 sx Class "C" cement (8.3 bbls slurry) (s.w. 14.8 ppg, yield 1.32, 6.31 gal/sk) @2 bpm rate w/ 500 psi and displaced w/ 18.5 bbw and estimated TOC @ 4982'. POW w/ 60 jts 2-3/8" tubing, SWI and SD. (VH)

Daily Cost: \$11,640

Cum. Cost: \$61,373 AFE Cum. Cost: \$61,373

AFE Amount:

Oct 2, 2021 Saturday (Day 6)

well SI, no activity. (VH)

Daily Cost: \$0

Cum. Cost: \$61,373 AFE Cum. Cost: \$61,373

AFE Amount:

Oct 3, 2021 Sunday (Day 7)

well SI, no activity. (VH)

Daily Cost: \$0

Cum. Cost: \$61,373 AFE Cum. Cost: \$61,373

AFE Amount:

Fasken SWD

DAILY OPERATIONS REPORT

Cabot Q State SWD # 1

Printed Oct 18, 2021 Page 3 of 5

Cabot Q State SWD # 1	Lea Co., NM	Well ID: CA200
------------------------------	-------------	----------------

Zone: 1 Field: SWD, San Andres

Oct 4, 2021 Monday (Day 8)

SICP-0 psi, SITP-slight vacuum. While RIW to tag cement, tubing tongs broke and repaired in 35 min. Continued RIW and tagged TOC @ 5031'. Pressured up on casing to 530 psi and loss 20 psi in 15 min. Spoke to Kerry Fortner with OCD at 10:15 Tx time and received request to spot 26 sx plug and cover bad casing interval. Mixed and pumped 26 sx Class "C" cement (6.1 bbls slurry) (s.w. 14.8 ppg, yield 1.32, 6.31 gal/sk) @ 2 bpm rate w/ 500 psi and displaced w/ 18 bbw and estimated TOC @ 4760' and POW w/ 60 jts 2-3/8" tubing. RIW w/ 6 DC and POW and LD the same. WOC 4 hrs, RIW w/ tubing and tagged TOC @ 4904'. Spoke to Kerry Fortner with at 3:15 and received request to spot 26 sx plug and cover bad casing interval. Mixed and pumped 25 sx Class "C" cement (5.9 bbls slurry) (s.w. 14.8 ppg, yield 1.32, 6.31 gal/sk) @ 2 bpm rate w/ 500 psi and displaced w/ 17.5 bbw and estimated TOC @ 4650' and POW w/ 60 jts 2-3/8" tubing. SWI and SDON. (VH)

Daily Cost: \$9,640

Cum. Cost: \$71,013 AFE Cum. Cost: \$71,013

AFE Amount:

Oct 5, 2021 Tuesday (Day 9)

SICP-0 psi. RIW w/ 2-3/8" tbg and tagged TOC @ 4834', (184' deeper than what should tag). Notified OCD and was approved to pump 100 sx cmt plug was approved. Mixed and pumped 100 sx cement @ 4834' and after 80 sx mixed weighed at 14.9# a cement pump hose from mixer started leaking badly and was forced to change weight to 17 bbls displacement. Working on pump at report time w/ estimated TOC at 4034' and WOC 4 hrs. RIW w/ tubing and tagged TOC @ 4671' and bad casing interval covered. Called OCD at 4 pm CT and spoke to Kerry Fortner, informed to proceed plugging by original procedure. POW w/ tubing and mule shoe sub. PU and RIW w/ 5-1/2" AD1 packer and 129 jts 2-3/8" EUE 8rd N80 tubing and left packer swinging @ 4166'. RU BCM WL truck, RIW w/ strip shot and shot 4 holes @ 4650'. POW and RDWL and SDON. (VH)

Daily Cost: \$13,005

Cum. Cost: \$84,018 AFE Cum. Cost: \$84,018

AFE Amount:

Fasken SWD

DAILY OPERATIONS REPORT

Cabot Q State SWD # 1

Printed Oct 18, 2021 Page 4 of 5

Cabot Q State SWD # 1

Lea Co., NM

Well ID: CA200

Zone: 1 Field: SWD, San Andres

Oct 6, 2021 Wednesday (Day 10)

SICP- 0 psi, SITP- 0 psi. Set AD-1 packer at 4166' and pressured up on perf holes to 1400 psi and lost 100 psi in 15 min. Called OCD Office and spoke w/ Kerry Fortner and received request to spot 25 sx plug and tag below perfs at 4650'. POW w/ tubing and LD pkr. RIW w/ tubing open ended. Mixed and pumped 25 sx Class "C" cement (6.1 bbls slurry) (s.w. 14.8 ppg, yield 1.32, 6.31 gal/sk) at 2.5 bpm rate w/ 700 psi and displaced w/ 16.5 bbw, estimated TOC at 4417'. POW w/ 60 jts 2-3/8" tubing and WOC. RIW w/ tubing and tagged TOC at 4609'. Called OCD and spoke to Kerry Fortner at 1:30 pm CT and received request to spot 25 sx plug at 4609' and not to tag and spot additional 30 sx plug across liner top at 4075'. Displaced well w/ 300 bbls 9.5# mud laden brine. Mixed and pumped 25 sx Class "C" cement (6.1 bbls slurry) (s.w. 14.8 ppg, yield 1.32, 6.31 gal/sk) at 2.5 bpm rate w/ 700 psi w/ good circulation throughout job and displaced w/ 16.5 bbls mud laden brine and estimated TOC at 4354'. POW and LD 15 jts 2-3/8" EUE 8rd N80 tubing w/ EOT at 4100' and RU BCM pump. Mixed and pumped 30 sx Class "C" cement (7 bbls slurry) (s.w. 14.8 ppg, yield 1.32, 6.31 gal/sk) at 2.5 bpm rate w/ 700 psi w/ good circulation throughout job and displaced w/ 15 bbls mud laden brine and estimated TOC at 4000'. POW and LD 11 jts 2-3/8" EUE 8rd N80 tubing w/ EOT at 3750'. Mixed and pumped 35 sx Class "C" cement (8.2 bbls slurry) (s.w. 14.8 ppg, yield 1.32, 6.31 gal/sk) at 2.5 bpm rate w/ 550 psi w/ good circulation throughout job and displaced w/ 14 bbls mud laden brine and estimated TOC at 3644'. POW w/ 60 jts, SWI and SDON. (VH)

Daily Cost: \$13,638

Cum. Cost: \$97,656 AFE Cum. Cost: \$97,656

AFE Amount:

Oct 7, 2021 Thursday (Day 11)

SICP-0 psi, SITP-0 psi. RIW w/ 57 jts 2-3/8" EUE 8rd N80 tubing and tagged TOC @3644'. Called OCD and spoke to Kerry Fortner at 8:30 am CT and received approval of tag depth and received request to spot 100 sx @400' (shoe plug) and not tag. POW and LD tubing and left 13 jts in well w/ EOT @416'. Mixed and pumped 100 sx Class "C" cement (23.5 bbls slurry) (s.w. 14.8 ppg, yield 1.32, 6.31 gal/sk) @2.5 bpm rate w/ 550 psi and displaced w/ .4 bbls mud laden brine and estimated TOC @100'. RU BCM WL and RIW w/ strip shot and shot 4 holes @100'. POW and RDWL. Closed BOP and attempted to get injection rate w/ no success. Pressured up to 800 psi w/ .75 bf pumped and held pressure. Called OCD and spoke to Kerry Fortner at 12:30 pm Tx time and received approval to circulate 100' cement to surface. Mixed and pumped 35 sx Class "C" cement (8.2 bbls slurry) (s.w. 14.8 ppg, yield 1.32, 6.31 gal/sk) @2.5 bpm rate w/ 500 psi w/ good cement to surface. LD 3 jts and flange. RD plugging equipment and RDPU and SDON. Contractor back hauled 177 jts 2-3/8" EUE 8rd N80/L80 YB tubing to Tuboscope for inspection. well plugged and cutoff date scheduled for 10/13/21. (VH)

Daily Cost: \$14,315

Cum. Cost: \$111,971 AFE Cum. Cost: \$111,971

AFE Amount:

Fasken SWD
DAILY OPERATIONS REPORT

Cabot Q State SWD # 1

Printed Oct 18, 2021 Page 5 of 5

Cabot Q State SWD # 1

Lea Co., NM

Well ID: CA200

Zone: 1 Field: SWD, San Andres

Oct 15, 2021 Friday (Day 12)

Track hoe dug out WH, removed cement block and could not break and moved to edge of location. Contractor cut off well head and welded plate onto casing. Installed 1" 2000 psi valve on top of plate, closed valve and removed handle. Filled bottle w/ grease and placed over valve. Backhoe backfilled hole and covered casing. Removed mast anchors and cleaned up location. WELL PLUGGED AND ABANDONED. (VH)

Daily Cost: \$6,350

Cum. Cost: \$118,321 AFE Cum. Cost: \$118,321

AFE Amount:

Fasken SWD

DAILY OPERATIONS REPORT

Cabot Q State SWD # 1

Printed Oct 18, 2021 Page 1 of 5

Cabot Q State SWD # 1

Lea Co., NM

Well ID: CA200

Zone: 1 Field: SWD, San Andres

AFE # 4207
Plug and Abandon.

Sep 27, 2021 Monday (Day 1)

SICP-0 psi, SITP-240 psi. Called Carlsbad NM BLM office at 9:09 am NM time, spoke with Kerry Fortner and informed of plans to begin plugging operations on well. BCM delivered and set plugging equipment and drove rig from Lamesa Tx to location and RUPU (BCM Rig No.5). Dug out well cellar and open tubing to closed top gas buster and flowed 140 bf in 45 min. RU BCM pump and pumped 50 bbw and well was static. Observed wrong size adapter was delivered and wait 45 min on correct size adapter. NDWH and NU 3k manual BOP. SWI and SDON. (VH)

Daily Cost: \$7,888

Cum. Cost: \$7,888 AFE Cum. Cost: \$7,888

AFE Amount:

Sep 28, 2021 Tuesday (Day 2)

SICP-0 psi, SITP-0 psi. NDWH and NU 3k manual BOP. Released packer and well began flowing up casing and pressure increased to 240 psi instantly. Reverse circulated 280 bbw and well was static. POW and LD 137 jts 2-7/8" EUE TK99 IPC tubing and LD packer. RU The WL Group truck, RU full lubricator and RIW w/ 4.5" gauge ring and sat down at 4712' and became stuck. Pumped 26 bbw and attempted to work tools free w/ no success. worked cable from 1000k to 3800k tension in 200 pound increments and cable pulled out rope socket. POW w/ cable and by WL depthometer w/ all cable was recovered. SWI and SDON. (VH)

Daily Cost: \$12,817

Cum. Cost: \$20,705 AFE Cum. Cost: \$20,705

AFE Amount:

Sep 29, 2021 Wednesday (Day 3)

SICP-0 psi. Calibrated and RIW w/ 4-3/8" overshot dressed w/ 3-1/8" grapple and cut lip cut and PU 147 jts 2-3/8" EUE 8rd N80 YB tubing and tagged TOF @4712'. Sat down 3 pts and fish slid down well to @4786'. Sat down 5 pts and felt slight PU. POW w/ tubing and LD gauge ring and CCL w/ all fish recovered from well. RIW w/ 4-5/8" drill bit and 5-1/2" csg scraper and 148 jts 2-3/8" tubing and tagged @4786'. RU power swivel, NU BIW stripper and pumped down casing at 2.5 bpm rate @100 psi. washed down from 4786' - 4886', drilled 3 bridges and lost circulation several times. Pumped a total of 160 bbls cut brine and only recovered 30 bf. PU 60', SWI and SDON. (VH)

Daily Cost: \$16,038

Cum. Cost: \$36,743 AFE Cum. Cost: \$36,743

AFE Amount:

Fasken SWD
DAILY OPERATIONS REPORT
Cabot Q State SWD # 1

Printed Oct 18, 2021 Page 2 of 5

Cabot Q State SWD # 1	Lea Co., NM	Well ID: CA200
------------------------------	-------------	----------------

Zone: 1 Field: SWD, San Andres

Sep 30, 2021 Thursday (Day 4)

SICP-0 psi, SITP-0 psi. Continued to wash down from 4886', pumping 1.5 bpm rate at 150 psi and @ 4982' and well began to circulate. Drilled down to 5047' and recovered spring from csg scraper in returns. Circulated well clean, LD power swivel and ND stripper head. POW w/ 156 jts 2-3/8" EUE 8rd N80 YB tubing and discovered retainer ring broke off from scraper and left 6 blades in well. Waited 1 hr on storm to pass. RIW w/ 4-5/8" drill bit and 6 3-1/8" DC, XO and 149 jt 2-3/8" tubing and tagged @4794'. Note: passed through liner top w/ very little restriction and pulled back out w/ no drag. RU power swivel, NU BIW stripper and established reverse circulation. Drilled down from 4794' - 5054', ran 8 jts freely and tagged hard @5309'. POW w/ 32 jts and left bit above liner. SWI and SDON. (VH)

Daily Cost:	\$12,990		
Cum. Cost:	\$49,733	AFE Cum. Cost:	\$49,733
AFE Amount:			

Oct 1, 2021 Friday (Day 5)

SICP-0 psi, SITP-0 psi. RIW w/ 4-5/8" and 6 drill collars and resumed cleaning out to required depth. Tagged @ 4794' and took 15 min to get through bad spot and again @ 4922' and took 15 min to get through second bad spot. Called OCD at 9:30 am Tx time and spoke to Kerry Fortner requested permission to start plugging higher up well and request was denied. OCD did approve a cement spot @ 5580', then tag plug and test casing integrity. POW w/ tubing, drill collars and bit. RIW w/ mule shoe jt, perf sub and 2-3/8" N80 tubing. Tagged and passed through previous bad spots w/ some restriction and tagged @ 5339' and made no further progress. Called OCD at 3:30 pm Tx time, spoke to Kerry Fortner, received permission to spot 35 sx cement plug @ 5339', then tag plug and test casing integrity. Mixed and pumped 35 sx Class "C" cement (8.3 bbls slurry) (s.w. 14.8 ppg, yield 1.32, 6.31 gal/sk) @2 bpm rate w/ 500 psi and displaced w/ 18.5 bbw and estimated TOC @ 4982'. POW w/ 60 jts 2-3/8" tubing, SWI and SD. (VH)

Daily Cost:	\$11,640		
Cum. Cost:	\$61,373	AFE Cum. Cost:	\$61,373
AFE Amount:			

Oct 2, 2021 Saturday (Day 6)

well SI, no activity. (VH)

Daily Cost:	\$0		
Cum. Cost:	\$61,373	AFE Cum. Cost:	\$61,373
AFE Amount:			

Oct 3, 2021 Sunday (Day 7)

well SI, no activity. (VH)

Daily Cost:	\$0		
Cum. Cost:	\$61,373	AFE Cum. Cost:	\$61,373
AFE Amount:			

Fasken SWD
DAILY OPERATIONS REPORT

Cabot Q State SWD # 1

Printed Oct 18, 2021 Page 3 of 5

Cabot Q State SWD # 1

Lea Co., NM

Well ID: CA200

Zone: 1 Field: SWD, San Andres

Oct 4, 2021 Monday (Day 8)

SICP-0 psi, SITP-slight vacuum. While RIW to tag cement, tubing tongs broke and repaired in 35 min. Continued RIW and tagged TOC @ 5031'. Pressured up on casing to 530 psi and loss 20 psi in 15 min. Spoke to Kerry Fortner with OCD at 10:15 Tx time and received request to spot 26 sx plug and cover bad casing interval. Mixed and pumped 26 sx Class "C" cement (6.1 bbls slurry) (s.w. 14.8 ppg, yield 1.32, 6.31 gal/sk) @ 2 bpm rate w/ 500 psi and displaced w/ 18 bbw and estimated TOC @ 4760' and POW w/ 60 jts 2-3/8" tubing. RIW w/ 6 DC and POW and LD the same. WOC 4 hrs, RIW w/ tubing and tagged TOC @ 4904'. Spoke to Kerry Fortner with at 3:15 and received request to spot 26 sx plug and cover bad casing interval. Mixed and pumped 25 sx Class "C" cement (5.9 bbls slurry) (s.w. 14.8 ppg, yield 1.32, 6.31 gal/sk) @ 2 bpm rate w/ 500 psi and displaced w/ 17.5 bbw and estimated TOC @ 4650' and POW w/ 60 jts 2-3/8" tubing. SWI and SDON. (VH)

Daily Cost: \$9,640

Cum. Cost: \$71,013 AFE Cum. Cost: \$71,013

AFE Amount:

Oct 5, 2021 Tuesday (Day 9)

SICP-0 psi. RIW w/ 2-3/8" tbg and tagged TOC @ 4834', (184' deeper than what should tag). Notified OCD and was approved to pump 100 sx cmt plug was approved. Mixed and pumped 100 sx cement @ 4834' and after 80 sx mixed weighed at 14.9# a cement pump hose from mixer started leaking badly and was forced to change weight to 17 bbls displacement. Working on pump at report time w/ estimated TOC at 4034' and WOC 4 hrs. RIW w/ tubing and tagged TOC @ 4671' and bad casing interval covered. Called OCD at 4 pm CT and spoke to Kerry Fortner, informed to proceed plugging by original procedure. POW w/ tubing and mule shoe sub. PU and RIW w/ 5-1/2" AD1 packer and 129 jts 2-3/8" EUE 8rd N80 tubing and left packer swinging @ 4166'. RU BCM WL truck, RIW w/ strip shot and shot 4 holes @ 4650'. POW and RDWL and SDON. (VH)

Daily Cost: \$13,005

Cum. Cost: \$84,018 AFE Cum. Cost: \$84,018

AFE Amount:

Fasken SWD

DAILY OPERATIONS REPORT

Cabot Q State SWD # 1

Printed Oct 18, 2021 Page 4 of 5

Cabot Q State SWD # 1

Lea Co., NM

Well ID: CA200

Zone: 1 Field: SWD, San Andres

Oct 6, 2021 Wednesday (Day 10)

SICP- 0 psi, SITP- 0 psi. Set AD-1 packer at 4166' and pressured up on perf holes to 1400 psi and lost 100 psi in 15 min. Called OCD Office and spoke w/ Kerry Fortner and received request to spot 25 sx plug and tag below perfs at 4650'. POW w/ tubing and LD pkr. RIW w/ tubing open ended. Mixed and pumped 25 sx Class "C" cement (6.1 bbls slurry) (s.w. 14.8 ppg, yield 1.32, 6.31 gal/sk) at 2.5 bpm rate w/ 700 psi and displaced w/ 16.5 bbw, estimated TOC at 4417'. POW w/ 60 jts 2-3/8" tubing and WOC. RIW w/ tubing and tagged TOC at 4609'. Called OCD and spoke to Kerry Fortner at 1:30 pm CT and received request to spot 25 sx plug at 4609' and not to tag and spot additional 30 sx plug across liner top at 4075'. Displaced well w/ 300 bbls 9.5# mud laden brine. Mixed and pumped 25 sx Class "C" cement (6.1 bbls slurry) (s.w. 14.8 ppg, yield 1.32, 6.31 gal/sk) at 2.5 bpm rate w/ 700 psi w/ good circulation throughout job and displaced w/ 16.5 bbls mud laden brine and estimated TOC at 4354'. POW and LD 15 jts 2-3/8" EUE 8rd N80 tubing w/ EOT at 4100' and RU BCM pump. Mixed and pumped 30 sx Class "C" cement (7 bbls slurry) (s.w. 14.8 ppg, yield 1.32, 6.31 gal/sk) at 2.5 bpm rate w/ 700 psi w/ good circulation throughout job and displaced w/ 15 bbls mud laden brine and estimated TOC at 4000'. POW and LD 11 jts 2-3/8" EUE 8rd N80 tubing w/ EOT at 3750'. Mixed and pumped 35 sx Class "C" cement (8.2 bbls slurry) (s.w. 14.8 ppg, yield 1.32, 6.31 gal/sk) at 2.5 bpm rate w/ 550 psi w/ good circulation throughout job and displaced w/ 14 bbls mud laden brine and estimated TOC at 3644'. POW w/ 60 jts, SWI and SDON. (VH)

Daily Cost:	\$13,638		
Cum. Cost:	\$97,656	AFE Cum. Cost:	\$97,656
AFE Amount:			

Oct 7, 2021 Thursday (Day 11)

SICP-0 psi, SITP-0 psi. RIW w/ 57 jts 2-3/8" EUE 8rd N80 tubing and tagged TOC @3644'. Called OCD and spoke to Kerry Fortner at 8:30 am CT and received approval of tag depth and received request to spot 100 sx @400' (shoe plug) and not tag. POW and LD tubing and left 13 jts in well w/ EOT @416'. Mixed and pumped 100 sx Class "C" cement (23.5 bbls slurry) (s.w. 14.8 ppg, yield 1.32, 6.31 gal/sk) @2.5 bpm rate w/ 550 psi and displaced w/ .4 bbls mud laden brine and estimated TOC @100'. RU BCM WL and RIW w/ strip shot and shot 4 holes @100'. POW and RDWL. Closed BOP and attempted to get injection rate w/ no success. Pressured up to 800 psi w/ .75 bf pumped and held pressure. Called OCD and spoke to Kerry Fortner at 12:30 pm Tx time and received approval to circulate 100' cement to surface. Mixed and pumped 35 sx Class "C" cement (8.2 bbls slurry) (s.w. 14.8 ppg, yield 1.32, 6.31 gal/sk) @2.5 bpm rate w/ 500 psi w/ good cement to surface. LD 3 jts and flange. RD plugging equipment and RDPU and SDON. Contractor back hauled 177 jts 2-3/8" EUE 8rd N80/L80 YB tubing to Tuboscope for inspection. well plugged and cutoff date scheduled for 10/13/21. (VH)

Daily Cost:	\$14,315		
Cum. Cost:	\$111,971	AFE Cum. Cost:	\$111,971
AFE Amount:			

Fasken SWD
DAILY OPERATIONS REPORT

Cabot Q State SWD # 1

Printed Oct 18, 2021 Page 5 of 5

Cabot Q State SWD # 1

Lea Co., NM

Well ID: CA200

Zone: 1 Field: SWD, San Andres

Oct 15, 2021 Friday (Day 12)

Track hoe dug out WH, removed cement block and could not break and moved to edge of location. Contractor cut off well head and welded plate onto casing. Installed 1" 2000 psi valve on top of plate, closed valve and removed handle. Filled bottle w/ grease and placed over valve. Backhoe backfilled hole and covered casing. Removed mast anchors and cleaned up location. WELL PLUGGED AND ABANDONED. (VH)

Daily Cost: \$6,350

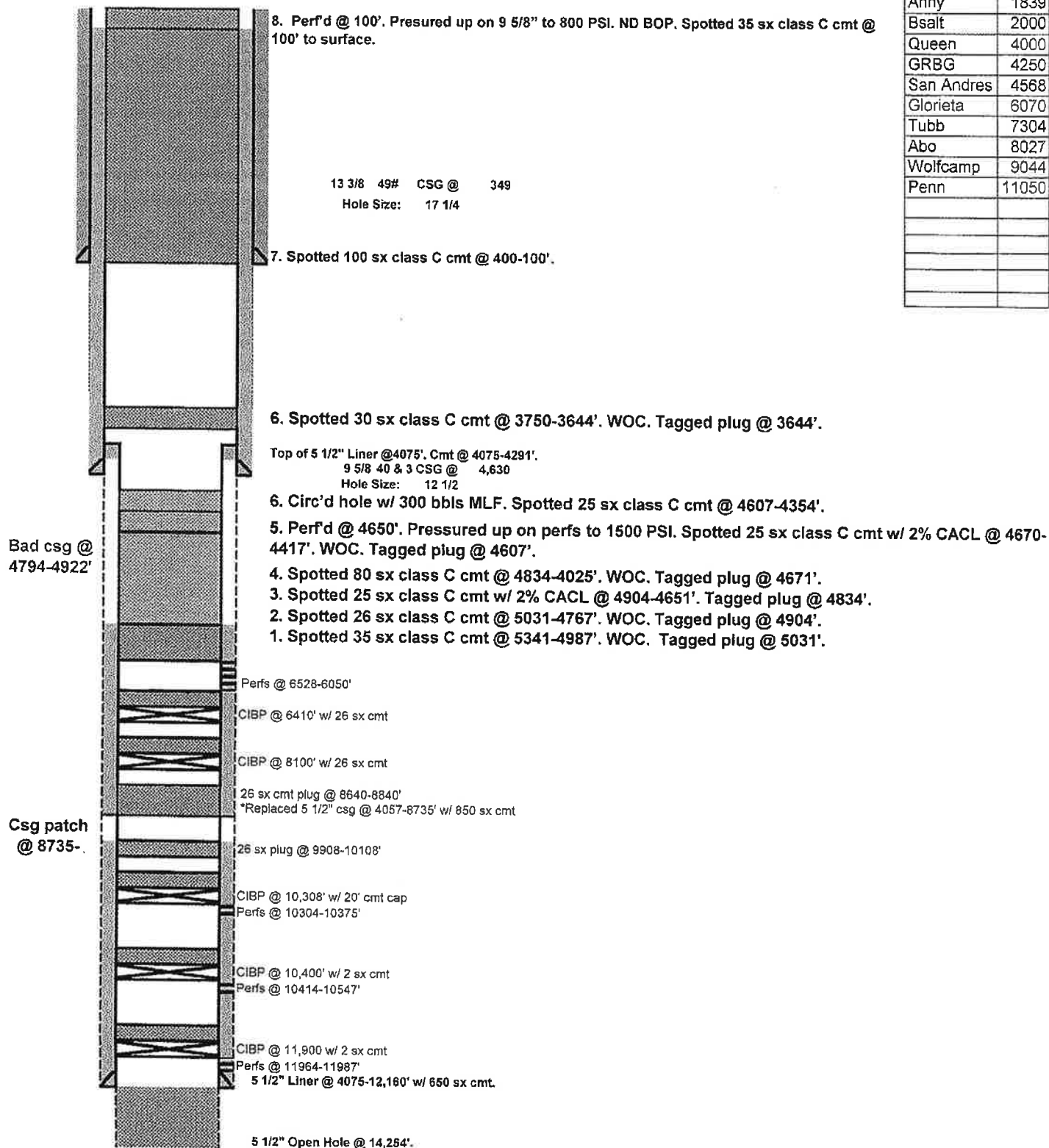
Cum. Cost: \$118,321 AFE Cum. Cost: \$118,321

AFE Amount:

Fasken Oil & Ranch LTD		PLUGGED	
Author:	Abby-BCM	Well No.	#1
Well Name	Cabot Q SWD	API #:	30-025-02690
Field/Pool	SWD; San Andres	Location:	Sec 7, T15S, R35E
County	Lea		1980' FSL & 560' FWL
State	New Mexico	GL:	4053'
Spud Date			

Description	O.D.	Grade	Weight	Depth	Hole	Cmt Sx	TOC
Surface Csg	13 3/8		49#	349	17 1/4	400	0
Prod Csg	9 5/8		40 & 36#	4,630	12 1/2	2,300	100
Liner	5 1/2		17 & 20#	4075-12,145	8 3/4	650	5,522

Formation	Top
Anhy	1839
Bsalt	2000
Queen	4000
GRBG	4250
San Andres	4568
Glorieta	6070
Tubb	7304
Abo	8027
Wolfcamp	9044
Penn	11050



Well: **Cabot Q SWD No. 1**
 Operator: **Fasken Oil and Ranch, Ltd.**
 Location: **1980' FSL and 560' FWL**
Sec 7, Township 15S, Range 35 E
Lea County, NM

API #:

IP:

TD: 14,262

PBDT: 6,200

Casing:

		TOC / Type
13-3/8"	48# - 350sx	349' Surf / Circ
9-5/8"	36# - J-55 - 2,300sx	4,630' 100' / TS+Est
5-1/2"	14,15.5,17,20# - 650sx	12,160' 9,080' / Est

Casing patch 8,735'-8,739' &
 Replaced Casing 4,057'-8,735' (1956)

Hole Sizes		
17-1/2"	370'	
12-1/4"	4,633'	
7-7/8"	12,145'	
5-1/2"	14,254'	

TOC: 4,075'

Perfs:

		Top	Bottom
Wolfcamp	Plugged / 1965	10,304'	10,375'
	Plugged / 1965	10,414'	10,547'
Strawn	Plugged /	11,964'	11,987'
San Andres	Active	5628	6,050'

Casing patch 8,735'-8,739'

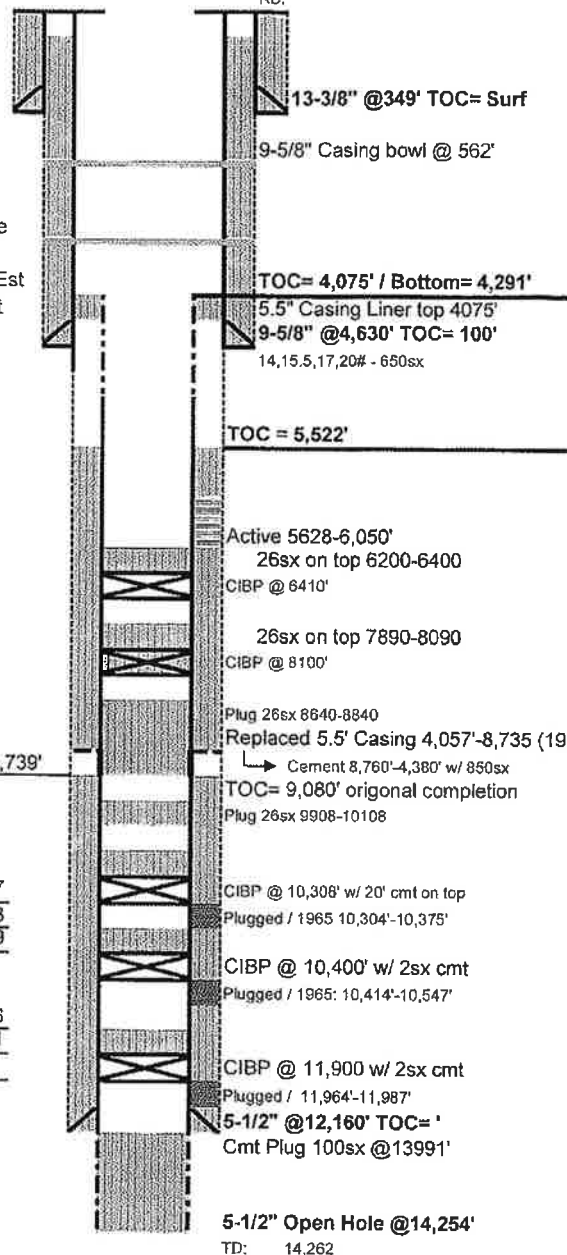
Length Top

Tubing:		
	Length	Top
2-7/8" IPC Tubing 15.7# J-55	5168.91	7.17
2-7/8" EUE 8rd Box x 2-3/8" EUE 8rd Pin SS X-O	0.41	5176.08
On-Off Tool	1.67	5176.49
Packer 4-1/2" PD x 2-3/8" TOSSD w/ SS top sub and NP body w/ SS 1.78 "F" profile nipple w/IPC ID and NP OD	7.25	5178.16
Mule Shoe Sub	1.65	5185.41
Set Below GL	7.17	
	5187.06	

ASOF 7-15-21

GL: 4041

KB:



Status: P 2 BO + 5 BW + 2 MCF (5/23/17)

5168' 2-7/8" IPC Tubing 15.7#

District I
1625 N. French Dr., Hobbs, NM 88240
Phone:(575) 393-6161 Fax:(575) 393-0720

District II
811 S. First St., Artesia, NM 88210
Phone:(575) 748-1283 Fax:(575) 748-9720

District III
1000 Rio Brazos Rd., Aztec, NM 87410
Phone:(505) 334-6178 Fax:(505) 334-6170

District IV
1220 S. St Francis Dr., Santa Fe, NM 87505
Phone:(505) 476-3470 Fax:(505) 476-3462

State of New Mexico
Energy, Minerals and Natural Resources
Oil Conservation Division
1220 S. St Francis Dr.
Santa Fe, NM 87505

COMMENTS

Action 56708

COMMENTS

Operator: FASKEN OIL & RANCH LTD 6101 Holiday Hill Rd Midland, TX 79707	OGRID: 151416
	Action Number: 56708
	Action Type: [C-103] Sub. Plugging (C-103P)

COMMENTS

Created By	Comment	Comment Date
plmartinez	DATA ENTRY PM	3/17/2022

District I
1625 N. French Dr., Hobbs, NM 88240
Phone:(575) 393-6161 Fax:(575) 393-0720

District II
811 S. First St., Artesia, NM 88210
Phone:(575) 748-1283 Fax:(575) 748-9720

District III
1000 Rio Brazos Rd., Aztec, NM 87410
Phone:(505) 334-6178 Fax:(505) 334-6170

District IV
1220 S. St Francis Dr., Santa Fe, NM 87505
Phone:(505) 476-3470 Fax:(505) 476-3462

State of New Mexico
Energy, Minerals and Natural Resources
Oil Conservation Division
1220 S. St Francis Dr.
Santa Fe, NM 87505

CONDITIONS

Action 56708

CONDITIONS

Operator: FASKEN OIL & RANCH LTD 6101 Holiday Hill Rd Midland, TX 79707	OGRID: 151416
	Action Number: 56708
	Action Type: [C-103] Sub. Plugging (C-103P)

CONDITIONS

Created By	Condition	Condition Date
kfortner	Need C103Q with marker pics to release	3/16/2022