

District I  
1625 N. French Dr., Hobbs, NM 88240  
District II  
811 S. First St., Artesia, NM 88210  
District III  
1000 Rio Brazos Rd., Aztec, NM 87410  
District IV  
1220 S. St. Francis Dr., Santa Fe, NM 87505

State of New Mexico  
Energy, Minerals & Natural Resources

Form C-104  
Revised August 1, 2011

Oil Conservation Division  
1220 South St. Francis Dr.  
Santa Fe, NM 87505

Submit one copy to appropriate District Office

AMENDED REPORT

**I. REQUEST FOR ALLOWABLE AND AUTHORIZATION TO TRANSPORT**

<sup>1</sup> Operator name and Address TAP ROCK OPERATING, LLC 523 PARK POINT DRIVE, SUITE 200 GOLDEN, CO 80401		<sup>2</sup> OGRID Number 372043	
		<sup>3</sup> Reason for Filing Code/ Effective Date NW	
<sup>4</sup> API Number 30 - 0 25-48635	<sup>5</sup> Pool Name WC-025 G-09 S243310P; UPPER WOLFCAMP		<sup>6</sup> Pool Code 98135
<sup>7</sup> Property Code 328891	<sup>8</sup> Property Name APOLLO STATE COM		<sup>9</sup> Well Number 212H

**II. <sup>10</sup> Surface Location**

UL or lot no.	Section	Township	Range	Lot Idn	Feet from the	North/South Line	Feet from the	East/West line	County
N	21	24-S	33-E	-	881'	SOUTH	2135'	WEST	LEA

**<sup>11</sup> Bottom Hole Location**

UL or lot no.	Section	Township	Range	Lot Idn	Feet from the	North/South line	Feet from the	East/West line	County
B	16	24-S	33-E	-	32'	NORTH	2355'	EAST	LEA

<sup>12</sup> Lse Code	<sup>13</sup> Producing Method Code	<sup>14</sup> Gas Connection Date	<sup>15</sup> C-129 Permit Number	<sup>16</sup> C-129 Effective Date	<sup>17</sup> C-129 Expiration Date
S	F	10/18/2021			

**III. Oil and Gas Transporters**


<sup>18</sup> Transporter OGRID	<sup>19</sup> Transporter Name and Address	<sup>20</sup> O/G/W
34053	PLAINS ALL AMERICAN 333 CLAY STREET SUITE 1600 HOUSTON, TX 77002	O
371960	LUCID ENERGY GROUP 3100 MCKINNON ST #800 DALLAS, TX 75201	G

**IV. Well Completion Data**

<sup>21</sup> Spud Date	<sup>22</sup> Ready Date	<sup>23</sup> TD	<sup>24</sup> PBTB	<sup>25</sup> Perforations	<sup>26</sup> DHC, MC
6/3/2021	10/18/2021	22839'	22777'	12760'-22693'	
<sup>27</sup> Hole Size	<sup>28</sup> Casing & Tubing Size	<sup>29</sup> Depth Set	<sup>30</sup> Sacks Cement		
17.5"	13.375"	1232'	1035 SKS		
8.75"	7.625"	11990'	1318 SKS		
6.75"	5.5"	22825'	1009 SKS		

**V. Well Test Data**

<sup>31</sup> Date New Oil	<sup>32</sup> Gas Delivery Date	<sup>33</sup> Test Date	<sup>34</sup> Test Length	<sup>35</sup> Tbg. Pressure	<sup>36</sup> Csg. Pressure
10/26/2021	10/26/2021	11/1/2021	24 HRS	0	3400
<sup>37</sup> Choke Size	<sup>38</sup> Oil	<sup>39</sup> Water	<sup>40</sup> Gas	<sup>41</sup> Test Method	
32/64	1510	4303	3901	Flowing	

<sup>42</sup> I hereby certify that the rules of the Oil Conservation Division have been complied with and that the information given above is true and complete to the best of my knowledge and belief.  
Signature: 

OIL CONSERVATION DIVISION

Approved by:



Printed name:  
JEFF TRLICA

Title: **Engineer**

Title:  
REGULATORY ANALYST

Approval Date: **04/07/22**

E-mail Address:  
JTRLICA@GMAIL.COM

Date:  
11/5/2021

Phone:  
720-772-5910

District I  
1625 N. French Dr., Hobbs, NM 88240  
Phone: (575) 393-6161 Fax: (575) 393-0720  
District II  
811 S. First St., Artesia, NM 88210  
Phone: (575) 748-1283 Fax: (575) 748-9720  
District III  
1000 Rio Brazos Road, Aztec, NM 87410  
Phone: (505) 334-6178 Fax: (505) 334-6170  
District IV  
1220 S. St. Francis Dr., Santa Fe, NM 87505  
Phone: (505) 476-3460 Fax: (505) 476-3462

State of New Mexico  
Energy, Minerals & Natural Resources  
Department  
OIL CONSERVATION DIVISION  
1220 South St. Francis Dr.  
Santa Fe, NM 87505

FORM C-102

Revised August 1, 2011

Submit one copy to appropriate  
District Office

AMENDED REPORT  
**AS-DRILLED**

**WELL LOCATION AND ACREAGE DEDICATION PLAT**

<sup>1</sup> API Number 30-025-48635		<sup>2</sup> Pool Code 98135	<sup>3</sup> Pool Name WC-025 G-09 S243310P; UPPER WOLFCAMP
<sup>4</sup> Property Code 328891	<sup>5</sup> Property Name APOLLO STATE COM		<sup>6</sup> Well Number 212H
<sup>7</sup> OGRID No. #372043	<sup>8</sup> Operator Name TAP ROCK OPERATING, LLC.		<sup>9</sup> Elevation 3537'

<sup>10</sup>Surface Location

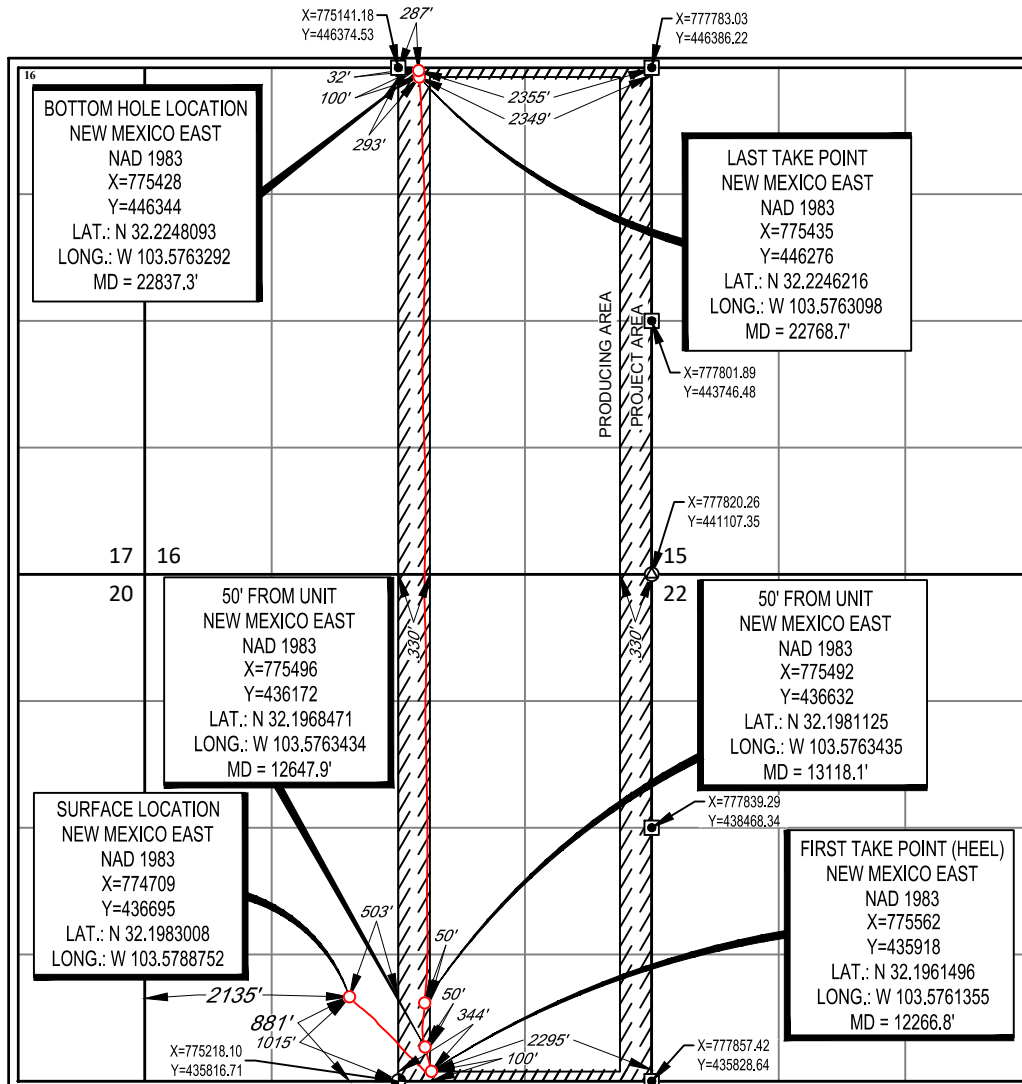
UL or lot no.	Section	Township	Range	Lot Idn	Feet from the	North/South line	Feet from the	East/West line	County
N	21	24-S	33-E	-	881'	SOUTH	2135'	WEST	LEA

<sup>11</sup>Bottom Hole Location If Different From Surface

UL or lot no.	Section	Township	Range	Lot Idn	Feet from the	North/South line	Feet from the	East/West line	County
B	16	24-S	33-E	-	32'	NORTH	2355'	EAST	LEA

<sup>12</sup> Dedicated Acres 640	<sup>13</sup> Joint or Infill Infill	<sup>14</sup> Consolidation Code	<sup>15</sup> Order No.
--------------------------------------	---	----------------------------------	-------------------------

No allowable will be assigned to this completion until all interests have been consolidated or a non-standard unit has been approved by the division.



<sup>17</sup>OPERATOR CERTIFICATION

I hereby certify that the information contained herein is true and complete to the best of my knowledge and belief, and that this organization either owns a working interest or unleased mineral interest in the land including the proposed bottom hole location or has a right to drill this well at this location pursuant to a contract with an owner of such a mineral or working interest, or to a voluntary pooling agreement or a compulsory pooling order heretofore entered by the division.

*Ramsey*

9/29/2021

Signature Date

Bill Ramsey

Printed Name

bramsey@taprk.com

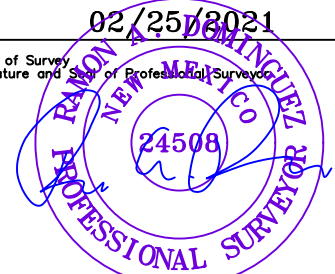
E-mail Address

<sup>18</sup>SURVEYOR CERTIFICATION

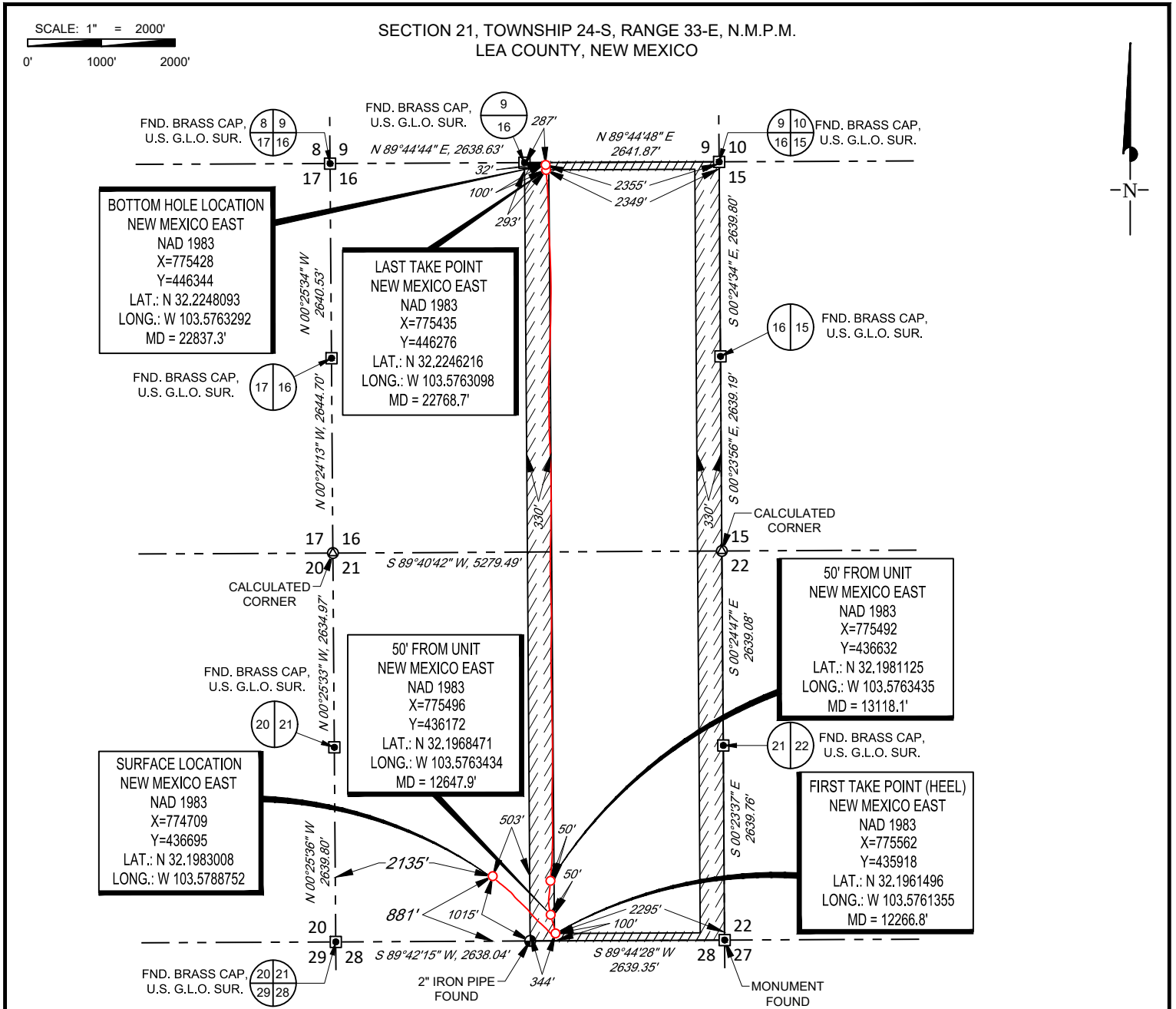
I hereby certify that the well location shown on this plat was plotted from field notes of actual surveys made by me or under my supervision, and that the same is true to the best of my belief.

02/25/2021

Date of Survey Signature and Seal of Professional Surveyor



Certificate Number



LEASE NAME & WELL NO.: APOLLO STATE COM 212H

SECTION 21 TWP 24-S RGE 33-E SURVEY N.M.P.M.

COUNTY LEA STATE NM ELEVATION 3537'

DESCRIPTION 881' FSL & 2135' FWL

**INTERNAL  
PRE-COMPLETION  
PLAT**



1400 EVERMAN PARKWAY, Ste. 146 • FT. WORTH, TEXAS 76140  
 TELEPHONE: (817) 744-7512 • FAX (817) 744-7554  
 2903 NORTH BIG SPRING • MIDLAND, TEXAS 79705  
 TELEPHONE: (432) 682-1653 OR (800) 767-1653 • FAX (432) 682-1743  
 WWW.TOPOGRAPHIC.COM



APOLLO STATE COM 212H PRE-COMPLETION	REVISION:	
	INT	DATE
DATE: 08/18/21		
FILE: C:\APOLLO_STATE_COM_212H		
DRAWN BY: GJU		
SHEET: 2 OF 2		

**NOTES:**

1. ORIGINAL DOCUMENT SIZE: 8.5" X 11"
2. ALL BEARINGS, DISTANCES, AND COORDINATE VALUES CONTAINED HEREIN ARE GRID BASED UPON THE NEW MEXICO COORDINATE SYSTEM OF 1983, EAST ZONE, U.S. SURVEY FEET.
3. THIS WELL LOCATION SHOWN HEREON HAS BEEN SURVEYED ON THE GROUND UNDER MY SUPERVISION AND PREPARED ACCORDING TO THE EVIDENCE FOUND AT THE TIME OF SURVEY, AND DATA PROVIDED BY TAP ROCK OPERATING, LLC. THIS CERTIFICATION IS MADE AND LIMITED TO THOSE PERSONS OR ENTITIES SHOWN ON THE FACE OF THIS PLAT AND IS NON-TRANSFERABLE. THIS SURVEY IS CERTIFIED FOR THIS TRANSACTION ONLY.



Operator: Tap Rock Resources, LLC.  
Well Name: Apollo State Com 212H  
County: Lea  
State: New Mexico  
Rig Name: H&P 264  
API: 30-025-48635

Intrepid Directional Drilling Specialists certifies that the surveys performed on the above referenced well are true and correct MWD surveys, data provided as follows:

Surveyor: Intrepid Directional Drilling Specialists  
Survey Depths: 144' MD – 22773' MD  
Projection to Bit: 22839' MD  
Dates Performed: 06/03/2021 – 07/18/2021  
Type of Survey: MWD

Sincerely,

A handwritten signature in black ink, appearing to read "T. Henk".

Travis Henk  
MWD Operations Manager  
Intrepid Directional Drilling Specialists





Operator: **Tap Rock Resources, LLC.**  
 Well Name: **Apollo State Com 212H**  
 Job Number: **ID2921**  
 Survey Company: **Intrepid Directional Drilling Specialists**  
 Rig Name: **H&P 264**

Target KBTVD: **12490.00**  
 Target Inclination: **90.00°**  
 Declination Correction: **5.98°**  
 KB Elevation: **3,564**

Vertical Section Calculated Along Azimuth: **359.58°**  
 Survey Calculation Method: **Minimum Curvature**

TIE PT. TYPE	SVY #	Survey Depth	INC deg.	AZM deg.	Course Length	TVD Ft.	V'Sect FT.	+N/-S Ft.	+E/-W Ft.	Dogleg °/100'
Tie In	0	0	0.00	0.00	0	0	0	0	0	0.00
MWD	1	144	0.35	163.57	144	144.00	-0.42	-0.42	0.12	0.24
MWD	2	235	1.36	152.14	91	234.99	-1.65	-1.64	0.71	1.12
MWD	3	420	1.36	154.69	185	419.94	-5.59	-5.57	2.67	0.03
MWD	4	511	1.49	150.38	91	510.91	-7.60	-7.57	3.72	0.19
MWD	5	603	1.36	137.38	92	602.88	-9.45	-9.42	5.05	0.38
MWD	6	785	0.31	88.86	182	784.86	-11.05	-11.00	7.00	0.65
MWD	7	876	0.26	45.44	91	875.86	-10.90	-10.85	7.40	0.24
MWD	8	966	0.18	56.52	90	965.86	-10.68	-10.63	7.66	0.10
MWD	9	1057	0.13	118.74	91	1056.86	-10.65	-10.60	7.87	0.18
MWD	10	1149	0.26	161.55	92	1148.86	-10.90	-10.84	8.03	0.20
MWD	11	1183	0.04	221.22	34	1182.86	-10.99	-10.93	8.04	0.71
MWD	12	1318	1.01	241.26	135	1317.85	-11.58	-11.53	6.97	0.72
MWD	13	1412	0.88	247.77	94	1411.84	-12.25	-12.21	5.58	0.18
MWD	14	1508	1.01	172.01	96	1507.83	-13.36	-13.32	5.01	1.21
MWD	15	1602	3.12	143.88	94	1601.76	-16.26	-16.21	6.63	2.43
MWD	16	1696	4.26	130.61	94	1695.57	-20.63	-20.55	10.79	1.51
MWD	17	1789	5.89	129.20	93	1788.20	-25.94	-25.81	17.11	1.76
MWD	18	1883	6.81	132.02	94	1881.62	-32.77	-32.59	24.99	1.03
MWD	19	1977	6.73	130.87	94	1974.97	-40.17	-39.93	33.30	0.17
MWD	20	2071	6.90	131.05	94	2068.30	-47.54	-47.24	41.72	0.18
MWD	21	2165	6.86	131.14	94	2161.63	-55.01	-54.64	50.21	0.04
MWD	22	2260	6.95	128.41	95	2255.94	-62.37	-61.94	58.98	0.36
MWD	23	2355	7.25	131.58	95	2350.21	-69.99	-69.49	67.97	0.52
MWD	24	2450	7.03	129.29	95	2444.47	-77.72	-77.15	76.95	0.38
MWD	25	2543	7.25	132.28	93	2536.75	-85.33	-84.71	85.70	0.46
MWD	26	2638	7.52	131.31	95	2630.96	-93.53	-92.84	94.80	0.31
MWD	27	2732	7.91	127.62	94	2724.11	-101.61	-100.85	104.55	0.67
MWD	28	2825	9.19	125.95	93	2816.08	-109.96	-109.12	115.63	1.40
MWD	29	2920	10.07	128.15	95	2909.74	-119.64	-118.70	128.30	1.00
MWD	30	3014	11.38	130.35	94	3002.09	-130.82	-129.78	141.83	1.46
MWD	31	3108	11.43	129.47	94	3094.24	-142.85	-141.71	156.09	0.19
MWD	32	3202	11.38	130.08	94	3186.38	-154.84	-153.60	170.38	0.14
MWD	33	3296	11.78	129.91	94	3278.47	-167.08	-165.73	184.83	0.43
MWD	34	3390	12.18	129.82	94	3370.42	-179.69	-178.23	199.81	0.43
MWD	35	3484	12.40	130.35	94	3462.27	-192.69	-191.12	215.12	0.26
MWD	36	3579	12.31	129.29	95	3555.07	-205.82	-204.13	230.73	0.26
MWD	37	3673	11.43	130.08	94	3647.06	-218.27	-216.48	245.61	0.95
MWD	38	3767	9.63	135.97	94	3739.47	-230.01	-228.13	258.20	2.23
MWD	39	3862	9.19	142.03	95	3833.20	-241.78	-239.82	268.39	1.14
MWD	40	3956	9.27	141.77	94	3925.98	-253.72	-251.69	277.70	0.10
MWD	41	4051	9.54	145.11	95	4019.70	-266.25	-264.15	286.94	0.64
MWD	42	4145	10.02	141.33	94	4112.34	-279.10	-276.93	296.50	0.85
MWD	43	4241	10.24	137.38	96	4206.84	-291.98	-289.73	307.50	0.76
MWD	44	4335	9.93	135.79	94	4299.39	-304.02	-301.69	318.81	0.44
MWD	45	4429	10.20	133.51	94	4391.94	-315.64	-313.23	330.49	0.51
MWD	46	4524	10.68	132.54	95	4485.37	-327.48	-324.97	343.08	0.54
MWD	47	4618	10.20	131.58	94	4577.81	-338.98	-336.38	355.72	0.54
MWD	48	4713	11.03	132.89	95	4671.19	-350.84	-348.15	368.67	0.91
MWD	49	4808	11.74	133.95	95	4764.32	-363.84	-361.04	382.29	0.78
MWD	50	4902	13.05	134.12	94	4856.12	-377.97	-375.07	396.80	1.39
MWD	51	4997	13.10	134.04	95	4948.66	-393.03	-390.02	412.23	0.06
MWD	52	5092	12.57	134.56	95	5041.29	-407.88	-404.76	427.34	0.57
MWD	53	5185	11.78	134.74	93	5132.19	-421.76	-418.54	441.29	0.85
MWD	54	5279	11.78	135.71	94	5224.21	-435.49	-432.16	454.81	0.21
MWD	55	5372	12.31	133.51	93	5315.17	-449.21	-445.78	468.63	0.75
MWD	56	5466	12.04	136.06	94	5407.05	-463.27	-459.74	482.70	0.64
MWD	57	5561	10.42	143.79	95	5500.24	-477.42	-473.81	494.65	2.32
MWD	58	5655	9.89	144.23	94	5592.76	-490.90	-487.22	504.39	0.57
MWD	59	5749	9.76	143.88	94	5685.39	-503.96	-500.20	513.81	0.15
MWD	60	5844	9.98	142.21	95	5778.98	-517.04	-513.21	523.60	0.38
MWD	61	5938	9.76	135.44	94	5871.59	-529.23	-525.33	534.18	1.26
MWD	62	6031	10.20	135.44	93	5963.18	-540.80	-536.81	545.49	0.47

MWD	63	6125	9.85	134.83	94	6055.75	-552.48	-548.41	557.03	0.39
MWD	64	6220	9.41	135.53	95	6149.41	-563.83	-559.68	568.23	0.48
MWD	65	6313	9.49	136.85	93	6241.15	-574.93	-570.70	578.80	0.25
MWD	66	6407	9.85	135.88	94	6333.81	-586.43	-582.13	589.70	0.42
MWD	67	6502	10.33	135.00	95	6427.34	-598.38	-593.98	601.38	0.53
MWD	68	6596	10.37	135.88	94	6519.81	-610.49	-606.02	613.23	0.17
MWD	69	6690	10.86	133.51	94	6612.20	-622.76	-618.19	625.54	0.70
MWD	70	6785	10.33	131.14	95	6705.59	-634.61	-629.95	638.45	0.72
MWD	71	6880	9.23	130.61	95	6799.20	-645.27	-640.51	650.65	1.16
MWD	72	6973	9.14	130.17	93	6891.01	-654.97	-650.13	661.95	0.12
MWD	73	7067	9.49	132.37	94	6983.77	-665.09	-660.17	673.38	0.53
MWD	74	7161	9.23	133.95	94	7076.52	-675.63	-670.63	684.53	0.39
MWD	75	7255	9.14	132.63	94	7169.31	-686.00	-680.92	695.46	0.24
MWD	76	7350	9.27	132.72	95	7263.09	-696.38	-691.22	706.63	0.14
MWD	77	7445	9.49	134.92	95	7356.82	-707.18	-701.94	717.80	0.44
MWD	78	7540	9.36	135.53	95	7450.54	-718.30	-712.98	728.75	0.17
MWD	79	7634	9.85	136.67	94	7543.22	-729.69	-724.28	739.62	0.56
MWD	80	7728	9.76	136.59	94	7635.85	-741.40	-735.92	750.62	0.10
MWD	81	7822	9.59	138.96	94	7728.51	-753.17	-747.61	761.23	0.46
MWD	82	7916	8.88	140.54	94	7821.29	-764.75	-759.12	770.99	0.80
MWD	83	8010	8.62	139.66	94	7914.20	-775.79	-770.09	780.16	0.31
MWD	84	8105	8.31	135.79	95	8008.16	-786.21	-780.44	789.55	0.68
MWD	85	8199	8.57	137.02	94	8101.15	-796.27	-790.43	799.06	0.34
MWD	86	8294	7.78	138.69	95	8195.18	-806.34	-800.44	808.13	0.87
MWD	87	8389	6.86	135.36	95	8289.41	-815.27	-809.31	816.37	1.07
MWD	88	8483	6.07	133.42	94	8382.81	-822.74	-816.72	823.92	0.87
MWD	89	8575	5.36	129.47	92	8474.35	-828.86	-822.79	830.77	0.88
MWD	90	8668	3.56	126.83	93	8567.06	-833.40	-827.29	836.44	1.95
MWD	91	8763	2.20	112.50	95	8661.94	-835.89	-829.75	840.48	1.61
MWD	92	8857	1.05	78.31	94	8755.91	-836.43	-830.27	842.99	1.55
MWD	93	8951	0.84	89.92	94	8849.89	-836.26	-830.09	844.52	0.30
MWD	94	9046	1.14	37.44	95	8944.88	-835.52	-829.34	845.79	0.96
MWD	95	9140	0.97	16.61	94	9038.86	-834.02	-827.84	846.59	0.44
MWD	96	9235	1.19	27.51	95	9133.85	-832.38	-826.19	847.28	0.32
MWD	97	9329	0.62	13.27	94	9227.84	-831.02	-824.83	847.84	0.65
MWD	98	9423	0.35	67.59	94	9321.83	-830.42	-824.23	848.23	0.54
MWD	99	9517	0.57	207.07	94	9415.83	-830.73	-824.53	848.28	0.92
MWD	100	9612	0.31	174.55	95	9510.83	-831.40	-825.21	848.09	0.37
MWD	101	9705	0.44	95.80	93	9603.83	-831.69	-825.50	848.47	0.52
MWD	102	9800	0.79	97.74	95	9698.82	-831.83	-825.62	849.48	0.37
MWD	103	9894	0.79	77.08	94	9792.81	-831.78	-825.56	850.75	0.30
MWD	104	9987	0.66	47.20	93	9885.81	-831.28	-825.06	851.77	0.42
MWD	105	10080	0.40	99.23	93	9978.80	-830.97	-824.74	852.48	0.56
MWD	106	10176	0.57	105.21	96	10074.80	-831.16	-824.92	853.28	0.18
MWD	107	10269	0.62	75.33	93	10167.79	-831.16	-824.92	854.21	0.33
MWD	108	10364	0.40	56.17	95	10262.79	-830.85	-824.60	854.98	0.29
MWD	109	10459	0.26	71.81	95	10357.79	-830.60	-824.35	855.46	0.17
MWD	110	10553	0.26	24.26	94	10451.79	-830.34	-824.09	855.75	0.22
MWD	111	10646	0.44	47.02	93	10544.79	-829.91	-823.65	856.10	0.24
MWD	112	10740	0.31	141.86	94	10638.78	-829.86	-823.61	856.52	0.59
MWD	113	10835	0.62	170.42	95	10733.78	-830.58	-824.32	856.77	0.40
MWD	114	10929	0.92	157.42	94	10827.77	-831.78	-825.52	857.14	0.37
MWD	115	11024	1.01	154.43	95	10922.76	-833.24	-826.98	857.79	0.11
MWD	116	11117	0.22	165.50	93	11015.75	-834.16	-827.89	858.19	0.86
MWD	117	11212	0.22	335.31	95	11110.75	-834.17	-827.90	858.16	0.46
MWD	118	11307	0.26	102.57	95	11205.75	-834.05	-827.78	858.30	0.45
MWD	119	11402	0.62	80.60	95	11300.75	-834.02	-827.74	859.01	0.41
MWD	120	11497	1.01	38.68	95	11395.74	-833.29	-827.00	860.04	0.72
MWD	121	11593	0.70	41.58	96	11491.73	-832.19	-825.91	860.96	0.33
MWD	122	11687	0.18	53.70	94	11585.73	-831.68	-825.39	861.46	0.56
MWD	123	11781	0.48	191.96	94	11679.73	-831.98	-825.69	861.50	0.67
MWD	124	11876	0.66	171.30	95	11774.72	-832.91	-826.62	861.50	0.28
MWD	125	11970	0.62	329.33	94	11868.72	-833.01	-826.71	861.32	1.34
MWD	126	12018	0.75	333.99	48	11916.72	-832.50	-826.21	861.05	0.29
MWD	127	12109	1.80	337.68	91	12007.69	-830.63	-824.35	860.25	1.16
MWD	128	12203	22.37	350.51	94	12099.12	-811.39	-805.13	856.70	21.93
MWD	129	12297	30.68	354.11	94	12183.16	-769.78	-763.56	851.28	9.00
MWD	130	12392	35.25	343.13	95	12262.91	-719.29	-713.15	840.82	7.90
MWD	131	12486	46.90	345.24	94	12333.66	-659.82	-653.80	824.15	12.48
MWD	132	12580	57.76	342.07	94	12391.03	-588.43	-582.56	803.10	11.86
MWD	133	12674	68.31	347.08	94	12433.61	-507.62	-501.90	781.02	12.18
MWD	134	12769	81.27	353.94	95	12458.51	-417.32	-411.71	766.12	15.31
MWD	135	12831	85.63	356.75	62	12465.58	-355.91	-350.34	761.13	8.35
MWD	136	12863	87.78	1.76	32	12467.42	-323.98	-318.41	760.71	17.01
MWD	137	12887	87.74	6.68	24	12468.36	-300.08	-294.50	762.48	20.49
MWD	138	12958	88.75	7.12	71	12470.53	-229.69	-224.05	771.00	1.55

MWD	139	13021	88.88	5.10	63	12471.84	-167.12	-161.42	777.71	3.21
MWD	140	13053	87.78	3.43	32	12472.77	-135.24	-129.53	780.09	6.25
MWD	141	13116	89.23	2.64	63	12474.41	-72.38	-66.64	783.42	2.62
MWD	142	13145	88.31	3.26	29	12475.04	-43.44	-37.68	784.91	3.83
MWD	143	13179	87.69	4.31	34	12476.22	-9.55	-3.78	787.16	3.58
MWD	144	13273	86.64	5.80	94	12480.87	83.90	89.74	795.43	1.94
MWD	145	13368	85.85	4.22	95	12487.09	178.27	184.17	803.71	1.86
MWD	146	13461	87.47	1.85	93	12492.51	270.93	276.87	808.62	3.08
MWD	147	13556	89.23	1.50	95	12495.25	365.83	371.79	811.40	1.89
MWD	148	13650	89.23	1.59	94	12496.51	459.76	465.74	813.93	0.10
MWD	149	13744	89.67	0.00	94	12497.41	553.73	559.73	815.23	1.75
MWD	150	13839	88.92	359.56	95	12498.58	648.73	654.72	814.87	0.92
MWD	151	13932	89.19	358.42	93	12500.12	741.71	747.69	813.23	1.26
MWD	152	14026	90.59	358.69	94	12500.30	835.69	841.66	810.86	1.52
MWD	153	14121	91.78	359.21	95	12498.33	930.66	936.62	809.12	1.37
MWD	154	14215	91.74	359.65	94	12495.45	1024.62	1030.57	808.18	0.47
MWD	155	14309	91.87	0.53	94	12492.48	1118.56	1124.52	808.33	0.95
MWD	156	14403	92.13	0.79	94	12489.20	1212.49	1218.46	809.41	0.39
MWD	157	14496	92.09	0.97	93	12485.78	1305.40	1311.38	810.84	0.20
MWD	158	14591	89.76	0.62	95	12484.25	1400.36	1406.35	812.16	2.48
MWD	159	14685	89.63	359.65	94	12484.75	1494.36	1500.35	812.38	1.04
MWD	160	14779	90.02	0.09	94	12485.03	1588.35	1594.35	812.17	0.63
MWD	161	14872	89.63	0.00	93	12485.32	1681.35	1687.35	812.24	0.43
MWD	162	14967	90.07	359.83	95	12485.57	1776.35	1782.35	812.10	0.50
MWD	163	15061	90.11	359.65	94	12485.42	1870.35	1876.35	811.67	0.20
MWD	164	15155	89.32	358.95	94	12485.89	1964.34	1970.34	810.52	1.12
MWD	165	15249	89.71	358.86	94	12486.68	2058.33	2064.32	808.73	0.43
MWD	166	15343	89.45	358.69	94	12487.37	2152.32	2158.29	806.72	0.33
MWD	167	15438	89.93	358.95	95	12487.89	2247.31	2253.27	804.76	0.57
MWD	168	15532	89.54	359.39	94	12488.32	2341.31	2347.26	803.40	0.63
MWD	169	15627	89.05	359.21	95	12489.49	2436.30	2442.25	802.24	0.55
MWD	170	15721	88.92	358.95	94	12491.15	2530.28	2536.22	800.73	0.31
MWD	171	15816	89.05	358.95	95	12492.84	2625.26	2631.19	798.99	0.14
MWD	172	15910	88.13	358.25	94	12495.15	2719.22	2725.13	796.69	1.23
MWD	173	16004	88.79	358.25	94	12497.68	2813.16	2819.05	793.83	0.70
MWD	174	16097	91.74	359.74	93	12497.25	2906.14	2912.02	792.19	3.55
MWD	175	16192	92.04	0.00	95	12494.11	3001.09	3006.97	791.98	0.42
MWD	176	16286	92.79	1.32	94	12490.15	3094.98	3100.88	793.06	1.61
MWD	177	16382	92.22	1.59	96	12485.96	3190.84	3196.76	795.50	0.66
MWD	178	16476	91.82	1.41	94	12482.64	3284.73	3290.67	797.95	0.47
MWD	179	16571	90.59	0.53	95	12480.65	3379.68	3385.63	799.56	1.59
MWD	180	16665	89.58	359.83	94	12480.51	3473.67	3479.63	799.86	1.31
MWD	181	16759	89.63	358.95	94	12481.15	3567.67	3573.62	798.86	0.94
MWD	182	16854	89.45	358.07	95	12481.92	3662.64	3668.58	796.39	0.95
MWD	183	16949	90.15	358.25	95	12482.25	3757.61	3763.53	793.34	0.76
MWD	184	17043	90.86	358.07	94	12481.42	3851.58	3857.48	790.32	0.78
MWD	185	17138	91.16	358.69	95	12479.74	3946.54	3952.42	787.63	0.72
MWD	186	17232	90.64	358.16	94	12478.27	4040.51	4046.38	785.05	0.79
MWD	187	17326	90.07	358.77	94	12477.69	4134.49	4140.34	782.53	0.89
MWD	188	17421	89.63	0.71	95	12477.93	4229.49	4235.33	782.10	2.09
MWD	189	17514	89.71	0.97	93	12478.47	4322.46	4328.32	783.46	0.29
MWD	190	17608	90.59	0.71	94	12478.22	4416.44	4422.31	784.84	0.98
MWD	191	17702	89.36	1.32	94	12478.27	4510.41	4516.29	786.51	1.46
MWD	192	17795	89.80	1.32	93	12478.95	4603.36	4609.27	788.65	0.47
MWD	193	17889	89.71	0.71	94	12479.35	4697.33	4703.25	790.31	0.66
MWD	194	17983	89.98	0.71	94	12479.60	4791.31	4797.24	791.48	0.29
MWD	195	18077	90.20	1.06	94	12479.46	4885.29	4891.23	792.93	0.44
MWD	196	18171	90.42	0.53	94	12478.95	4979.26	4985.22	794.24	0.61
MWD	197	18265	89.93	0.09	94	12478.66	5073.26	5079.22	794.74	0.70
MWD	198	18358	89.58	359.48	93	12479.06	5166.25	5172.22	794.40	0.76
MWD	199	18453	89.85	359.30	95	12479.53	5261.25	5267.21	793.38	0.34
MWD	200	18548	89.89	358.95	95	12479.75	5356.25	5362.20	791.93	0.37
MWD	201	18642	90.55	359.30	94	12479.38	5450.24	5456.19	790.50	0.79
MWD	202	18737	90.42	358.77	95	12478.58	5545.24	5551.17	788.90	0.57
MWD	203	18829	89.76	357.89	92	12478.44	5637.21	5643.13	786.22	1.20
MWD	204	18923	88.75	357.63	94	12479.66	5731.16	5737.05	782.54	1.11
MWD	205	19017	89.41	357.72	94	12481.17	5825.09	5830.96	778.73	0.71
MWD	206	19112	89.41	357.19	95	12482.15	5920.02	5925.86	774.51	0.56
MWD	207	19206	88.88	357.54	94	12483.55	6013.94	6019.75	770.19	0.68
MWD	208	19301	88.09	359.30	95	12486.06	6108.88	6114.67	767.57	2.03
MWD	209	19395	88.40	359.56	94	12488.94	6202.84	6208.62	766.64	0.43
MWD	210	19490	89.23	358.95	95	12490.90	6297.82	6303.60	765.40	1.08
MWD	211	19584	89.05	358.95	94	12492.31	6391.80	6397.57	763.68	0.19
MWD	212	19678	89.89	359.39	94	12493.18	6485.79	6491.55	762.32	1.01
MWD	213	19773	90.33	358.95	95	12493.00	6580.79	6586.54	760.94	0.66
MWD	214	19868	90.73	1.67	95	12492.12	6675.77	6681.53	761.46	2.89

MWD	215	<b>19961</b>	<b>92.97</b>	<b>1.94</b>	93	12489.12	6768.64	6774.43	764.38	2.43
MWD	216	<b>20056</b>	<b>93.93</b>	<b>2.02</b>	95	12483.40	6863.39	6869.20	767.66	1.01
MWD	217	<b>20148</b>	<b>93.10</b>	<b>2.11</b>	92	12477.76	6955.13	6960.96	770.97	0.91
MWD	218	<b>20241</b>	<b>91.74</b>	<b>1.76</b>	93	12473.84	7047.96	7053.83	774.11	1.51
MWD	219	<b>20336</b>	<b>91.74</b>	<b>1.23</b>	95	12470.95	7142.87	7148.75	776.58	0.56
MWD	220	<b>20430</b>	<b>91.52</b>	<b>1.41</b>	94	12468.28	7236.78	7242.69	778.75	0.30
MWD	221	<b>20525</b>	<b>90.64</b>	<b>1.59</b>	95	12466.49	7331.71	7337.64	781.23	0.95
MWD	222	<b>20619</b>	<b>91.12</b>	<b>2.38</b>	94	12465.04	7425.62	7431.57	784.49	0.98
MWD	223	<b>20714</b>	<b>90.64</b>	<b>1.06</b>	95	12463.58	7520.54	7526.51	787.34	1.48
MWD	224	<b>20808</b>	<b>90.68</b>	<b>0.62</b>	94	12462.50	7614.51	7620.50	788.72	0.47
MWD	225	<b>20902</b>	<b>91.03</b>	<b>0.79</b>	94	12461.10	7708.48	7714.48	789.88	0.41
MWD	226	<b>20997</b>	<b>90.68</b>	<b>0.88</b>	95	12459.68	7803.45	7809.46	791.26	0.38
MWD	227	<b>21092</b>	<b>90.86</b>	<b>0.62</b>	95	12458.41	7898.42	7904.44	792.50	0.33
MWD	228	<b>21186</b>	<b>89.71</b>	<b>359.74</b>	94	12457.94	7992.41	7998.44	792.80	1.54
MWD	229	<b>21280</b>	<b>90.37</b>	<b>358.77</b>	94	12457.87	8086.41	8092.43	791.58	1.25
MWD	230	<b>21375</b>	<b>91.03</b>	<b>358.16</b>	95	12456.71	8181.38	8187.38	789.03	0.95
MWD	231	<b>21469</b>	<b>90.59</b>	<b>358.25</b>	94	12455.38	8275.34	8281.33	786.09	0.48
MWD	232	<b>21563</b>	<b>90.46</b>	<b>357.98</b>	94	12454.52	8369.31	8375.27	783.00	0.32
MWD	233	<b>21658</b>	<b>89.23</b>	<b>357.63</b>	95	12454.78	8464.26	8470.20	779.36	1.35
MWD	234	<b>21752</b>	<b>87.91</b>	<b>356.84</b>	94	12457.12	8558.15	8564.06	774.82	1.64
MWD	235	<b>21847</b>	<b>89.27</b>	<b>357.81</b>	95	12459.46	8653.04	8658.92	770.39	1.76
MWD	236	<b>21941</b>	<b>87.82</b>	<b>357.19</b>	94	12461.85	8746.95	8752.80	766.29	1.68
MWD	237	<b>22035</b>	<b>89.54</b>	<b>358.16</b>	94	12464.01	8840.87	8846.69	762.48	2.10
MWD	238	<b>22130</b>	<b>89.54</b>	<b>358.69</b>	95	12464.78	8935.84	8941.65	759.87	0.56
MWD	239	<b>22224</b>	<b>88.31</b>	<b>358.07</b>	94	12466.54	9029.81	9035.60	757.21	1.47
MWD	240	<b>22317</b>	<b>90.33</b>	<b>357.98</b>	93	12467.64	9122.76	9128.53	754.01	2.17
MWD	241	<b>22411</b>	<b>89.98</b>	<b>357.63</b>	94	12467.39	9216.71	9222.46	750.41	0.53
MWD	242	<b>22506</b>	<b>89.58</b>	<b>356.93</b>	95	12467.75	9311.64	9317.35	745.90	0.85
MWD	243	<b>22601</b>	<b>89.49</b>	<b>355.96</b>	95	12468.53	9406.49	9412.17	740.01	1.03
MWD	244	<b>22695</b>	<b>88.79</b>	<b>355.26</b>	94	12469.94	9500.25	9505.88	732.82	1.05
MWD	245	<b>22773</b>	<b>87.60</b>	<b>354.55</b>	78	12472.39	9577.95	9583.53	725.89	1.78
PTB	246	<b>22839</b>	<b>87.60</b>	<b>354.55</b>	66	12475.16	9643.64	9649.17	719.63	0.00



Submit To Appropriate District Office Two Copies District I 1625 N. French Dr., Hobbs, NM 88240 District II 811 S. First St., Artesia, NM 88210 District III 1000 Rio Brazos Rd., Aztec, NM 87410 District IV 1220 S. St. Francis Dr., Santa Fe, NM 87505	<b>State of New Mexico</b> <b>Energy, Minerals and Natural Resources</b>  <b>Oil Conservation Division</b> <b>1220 South St. Francis Dr.</b> <b>Santa Fe, NM 87505</b>	<b>Form C-105</b> Revised April 3, 2017
--	---	--

**WELL COMPLETION OR RECOMPLETION REPORT AND LOG**

4. Reason for filing:  <input type="checkbox"/> <b>COMPLETION REPORT</b> (Fill in boxes #1 through #31 for State and Fee wells only)  <input type="checkbox"/> <b>C-144 CLOSURE ATTACHMENT</b> (Fill in boxes #1 through #9, #15 Date Rig Released and #32 and/or #33; attach this and the plat to the C-144 closure report in accordance with 19.15.17.13.K NMAC)	5. Lease Name or Unit Agreement Name  6. Well Number:																																	
7. Type of Completion: <input type="checkbox"/> NEW WELL <input type="checkbox"/> WORKOVER <input type="checkbox"/> DEEPENING <input type="checkbox"/> PLUGBACK <input type="checkbox"/> DIFFERENT RESERVOIR <input type="checkbox"/> OTHER _____																																		
8. Name of Operator TAP ROCK OPERATING, LLC	9. OGRID 372043																																	
10. Address of Operator 523 PARK POINT DRIVE, SUITE 200, GOLDEN, CO	11. Pool name or Wildcat																																	
<table border="1" style="width:100%; border-collapse: collapse;"> <tr> <th>12. Location</th> <th>Unit Ltr</th> <th>Section</th> <th>Township</th> <th>Range</th> <th>Lot</th> <th>Feet from the</th> <th>N/S Line</th> <th>Feet from the</th> <th>E/W Line</th> <th>County</th> </tr> <tr> <td><b>Surface:</b></td> <td></td> <td></td> <td></td> <td></td> <td></td> <td></td> <td></td> <td></td> <td></td> <td></td> </tr> <tr> <td><b>BH:</b></td> <td></td> <td></td> <td></td> <td></td> <td></td> <td></td> <td></td> <td></td> <td></td> <td></td> </tr> </table>	12. Location	Unit Ltr	Section	Township	Range	Lot	Feet from the	N/S Line	Feet from the	E/W Line	County	<b>Surface:</b>											<b>BH:</b>											
12. Location	Unit Ltr	Section	Township	Range	Lot	Feet from the	N/S Line	Feet from the	E/W Line	County																								
<b>Surface:</b>																																		
<b>BH:</b>																																		
13. Date Spudded	14. Date T.D. Reached	15. Date Rig Released	16. Date Completed (Ready to Produce)	17. Elevations (DF and RKB, RT, GR, etc.)																														
18. Total Measured Depth of Well	19. Plug Back Measured Depth	20. Was Directional Survey Made?	21. Type Electric and Other Logs Run																															
22. Producing Interval(s), of this completion - Top, Bottom, Name																																		

**23. CASING RECORD (Report all strings set in well)**

CASING SIZE	WEIGHT LB./FT.	DEPTH SET	HOLE SIZE	CEMENTING RECORD	AMOUNT PULLED

24. LINER RECORD				25. TUBING RECORD			
SIZE	TOP	BOTTOM	SACKS CEMENT	SCREEN	SIZE	DEPTH SET	PACKER SET

26. Perforation record (interval, size, and number)	27. ACID, SHOT, FRACTURE, CEMENT, SQUEEZE, ETC.	
	DEPTH INTERVAL	AMOUNT AND KIND MATERIAL USED

**28. PRODUCTION**

Date First Production	Production Method ( <i>Flowing, gas lift, pumping - Size and type pump</i> )	Well Status ( <i>Prod. or Shut-in</i> )					
Date of Test	Hours Tested	Choke Size	Prod'n For Test Period	Oil - Bbl	Gas - MCF	Water - Bbl.	Gas - Oil Ratio
Flow Tubing Press.	Casing Pressure	Calculated 24-Hour Rate	Oil - Bbl.	Gas - MCF	Water - Bbl.	Oil Gravity - API - ( <i>Corr.</i> )	
29. Disposition of Gas ( <i>Sold, used for fuel, vented, etc.</i> )						30. Test Witnessed By	

31. List Attachments

32. If a temporary pit was used at the well, attach a plat with the location of the temporary pit.	33. Rig Release Date:
--	-----------------------

34. If an on-site burial was used at the well, report the exact location of the on-site burial:  
 Latitude \_\_\_\_\_ Longitude \_\_\_\_\_ NAD83

*I hereby certify that the information shown on both sides of this form is true and complete to the best of my knowledge and belief*

Signature		Printed Name	Title
E-mail Address			Date

# INSTRUCTIONS

This form is to be filed with the appropriate District Office of the Division not later than 20 days after the completion of any newly-drilled or deepened well and not later than 60 days after completion of closure. When submitted as a completion report, this shall be accompanied by one copy of all electrical and radio-activity logs run on the well and a summary of all special tests conducted, including drill stem tests. All depths reported shall be measured depths. In the case of directionally drilled wells, true vertical depths shall also be reported. For multiple completions, items 11, 12 and 26-31 shall be reported for each zone.

**INDICATE FORMATION TOPS IN CONFORMANCE WITH GEOGRAPHICAL SECTION OF STATE**

Southeastern New Mexico		Northwestern New Mexico	

**OIL OR GAS  
SANDS OR ZONES**

No. 1, from.....to.....      No. 3, from.....to.....  
 No. 2, from.....to.....      No. 4, from.....to.....

**IMPORTANT WATER SANDS**

Include data on rate of water inflow and elevation to which water rose in hole.  
 No. 1, from.....to..... feet.....  
 No. 2, from.....to..... feet.....  
 No. 3, from.....to..... feet.....

**LITHOLOGY RECORD (Attach additional sheet if necessary)**

From	To	Thickness In Feet	Lithology		From	To	Thickness In Feet	Lithology

**District I**  
 1625 N. French Dr., Hobbs, NM 88240  
 Phone:(575) 393-6161 Fax:(575) 393-0720

**District II**  
 811 S. First St., Artesia, NM 88210  
 Phone:(575) 748-1283 Fax:(575) 748-9720

**District III**  
 1000 Rio Brazos Rd., Aztec, NM 87410  
 Phone:(505) 334-6178 Fax:(505) 334-6170

**District IV**  
 1220 S. St Francis Dr., Santa Fe, NM 87505  
 Phone:(505) 476-3470 Fax:(505) 476-3462

**State of New Mexico**  
**Energy, Minerals and Natural Resources**  
**Oil Conservation Division**  
**1220 S. St Francis Dr.**  
**Santa Fe, NM 87505**

ACKNOWLEDGMENTS

Action 60563

**ACKNOWLEDGMENTS**

Operator: TAP ROCK OPERATING, LLC 523 Park Point Drive Golden, CO 80401	OGRID: 372043
	Action Number: 60563
	Action Type: [C-104] Completion Packet (C-104C)

**ACKNOWLEDGMENTS**

<input checked="" type="checkbox"/>	I hereby certify that the required Water Use Report has been, or will be, submitted for this wells completion.
<input checked="" type="checkbox"/>	I hereby certify that the required FracFocus disclosure has been, or will be, submitted for this wells completion.

**District I**  
 1625 N. French Dr., Hobbs, NM 88240  
 Phone:(575) 393-6161 Fax:(575) 393-0720

**District II**  
 811 S. First St., Artesia, NM 88210  
 Phone:(575) 748-1283 Fax:(575) 748-9720

**District III**  
 1000 Rio Brazos Rd., Aztec, NM 87410  
 Phone:(505) 334-6178 Fax:(505) 334-6170

**District IV**  
 1220 S. St Francis Dr., Santa Fe, NM 87505  
 Phone:(505) 476-3470 Fax:(505) 476-3462

**State of New Mexico**  
**Energy, Minerals and Natural Resources**  
**Oil Conservation Division**  
**1220 S. St Francis Dr.**  
**Santa Fe, NM 87505**

CONDITIONS  
 Action 60563

**CONDITIONS**

Operator: TAP ROCK OPERATING, LLC 523 Park Point Drive Golden, CO 80401	OGRID: 372043
	Action Number: 60563
	Action Type: [C-104] Completion Packet (C-104C)

**CONDITIONS**

Created By	Condition	Condition Date
llowe	None	5/2/2022