

Form 3160-3
(June 2015)UNITED STATES
DEPARTMENT OF THE INTERIOR
BUREAU OF LAND MANAGEMENT

APPLICATION FOR PERMIT TO DRILL OR REENTER

FORM APPROVED
OMB No. 1004-0137
Expires: January 31, 20185. Lease Serial No.
NMNM114348

6. If Indian, Allottee or Tribe Name

7. If Unit or CA Agreement, Name and No.

8. Lease Name and Well No.
SOUTHERN HILLS 32-29 FEDERAL COM

2H

9. API Well No.
30-015-4951510. Field and Pool, or Exploratory
PURPLE SAGE; WOLFCAMP (GAS)/PUF11. Sec., T. R. M. or Blk. and Survey or Area
SEC 32/T25S/R27E/NMP1a. Type of work: ☒ DRILL ☐ REENTER
1b. Type of Well: ☐ Oil Well ☒ Gas Well ☐ Other
1c. Type of Completion: ☐ Hydraulic Fracturing ☒ Single Zone ☐ Multiple Zone2. Name of Operator
CIMAREX ENERGY COMPANY3a. Address
600 N MARIENFELD STREET ST SUITE 600, MIDLAND
3b. Phone No. (include area code)
(432) 571-78004. Location of Well (Report location clearly and in accordance with any State requirements. *)
At surface SESW / 820 FSL / 1558 FWL / LAT 32.081267 / LONG -104.215896
At proposed prod. zone NWNW / 100 FNL / 990 FWL / LAT 32.107894 / LONG -104.21737214. Distance in miles and direction from nearest town or post office*
13 miles12. County or Parish
EDDY13. State
NM15. Distance from proposed*
location to nearest
property or lease line, ft.
(Also to nearest drig. unit line, if any)
820 feet

16. No of acres in lease

17. Spacing Unit dedicated to this well
640.018. Distance from proposed location*
to nearest well, drilling, completed,
applied for, on this lease, ft.
20 feet19. Proposed Depth
9123 feet / 18591 feet20. BLM/BIA Bond No. in file
FED: NMB00118821. Elevations (Show whether DF, KDB, RT, GL, etc.)
3244 feet22. Approximate date work will start*
01/04/202123. Estimated duration
30 days

24. Attachments

The following, completed in accordance with the requirements of Onshore Oil and Gas Order No. 1, and the Hydraulic Fracturing rule per 43 CFR 3162.3-3 (as applicable)

- | | |
|---|---|
| 1. Well plat certified by a registered surveyor.
2. A Drilling Plan.
3. A Surface Use Plan (if the location is on National Forest System Lands, the SUPO must be filed with the appropriate Forest Service Office). | 4. Bond to cover the operations unless covered by an existing bond on file (see Item 20 above).
5. Operator certification.
6. Such other site specific information and/or plans as may be requested by the BLM. |
|---|---|

25. Signature
(Electronic Submission)Name (Printed/Typed)
AMITHY CRAWFORD / Ph: (432) 620-1936Date
03/17/2021Title
Regulatory AnalystApproved by (Signature)
(Electronic Submission)Name (Printed/Typed)
Cody Layton / Ph: (575) 234-5959Date
04/13/2022Title
Assistant Field Manager Lands & MineralsOffice
Carlsbad Field Office

Application approval does not warrant or certify that the applicant holds legal or equitable title to those rights in the subject lease which would entitle the applicant to conduct operations thereon.

Conditions of approval, if any, are attached.

Title 18 U.S.C. Section 1001 and Title 43 U.S.C. Section 1212, make it a crime for any person knowingly and willfully to make to any department or agency of the United States any false, fictitious or fraudulent statements or representations as to any matter within its jurisdiction.

(Continued on page 2)

*(Instructions on page 2)



Additional Operator Remarks

Location of Well

0. SHL: SESW / 820 FSL / 1558 FWL / TWSP: 25S / RANGE: 27E / SECTION: 32 / LAT: 32.081267 / LONG: -104.215896 (TVD: 0 feet, MD: 0 feet)

PPP: SWSW / 820 FSL / 990 FWL / TWSP: 25S / RANGE: 27E / SECTION: 32 / LAT: 32.081266 / LONG: -104.21773 (TVD: 8748 feet, MD: 8807 feet)

BHL: NWNW / 100 FNL / 990 FWL / TWSP: 25S / RANGE: 27E / SECTION: 29 / LAT: 32.107894 / LONG: -104.217372 (TVD: 9123 feet, MD: 18591 feet)

BLM Point of Contact

Name: JORDAN NAVARRETTE

Title: LIE

Phone: (575) 234-5972

Email: jnavarrette@blm.gov

CONFIDENTIAL

District I
1625 N. French Dr., Hobbs, NM 88240
Phone: (575) 393-6161 Fax: (575) 393-0720
District II
811 S. First St., Artesia, NM 88210
Phone: (575) 748-1283 Fax: (575) 748-9720
District III
1000 Rio Brazos Road, Aztec, NM 87410
Phone: (505) 334-6178 Fax: (505) 334-6170
District IV
1220 S. St. Francis Dr., Santa Fe, NM 87505
Phone: (505) 476-3460 Fax: (505) 476-3462

State of New Mexico
Energy, Minerals & Natural Resources Department
OIL CONSERVATION DIVISION
1220 South St. Francis Dr.
Santa Fe, NM 87505

Form C-102
Revised August 1, 2011
Submit one copy to appropriate
District Office

☐ AMENDED REPORT

WELL LOCATION AND ACREAGE DEDICATION PLAT

¹ API Number 30-015 49515	² Pool Code 98220	³ Pool Name Purple Sage Wolfcamp Gas
⁴ Property Code 332837	⁵ Property Name SOUTHERN HILLS 32-29 FED COM	⁶ Well Number 2H
⁷ OGRID No. 215099	⁸ Operator Name CIMAREX ENERGY CO.	⁹ Elevation 3244.2'

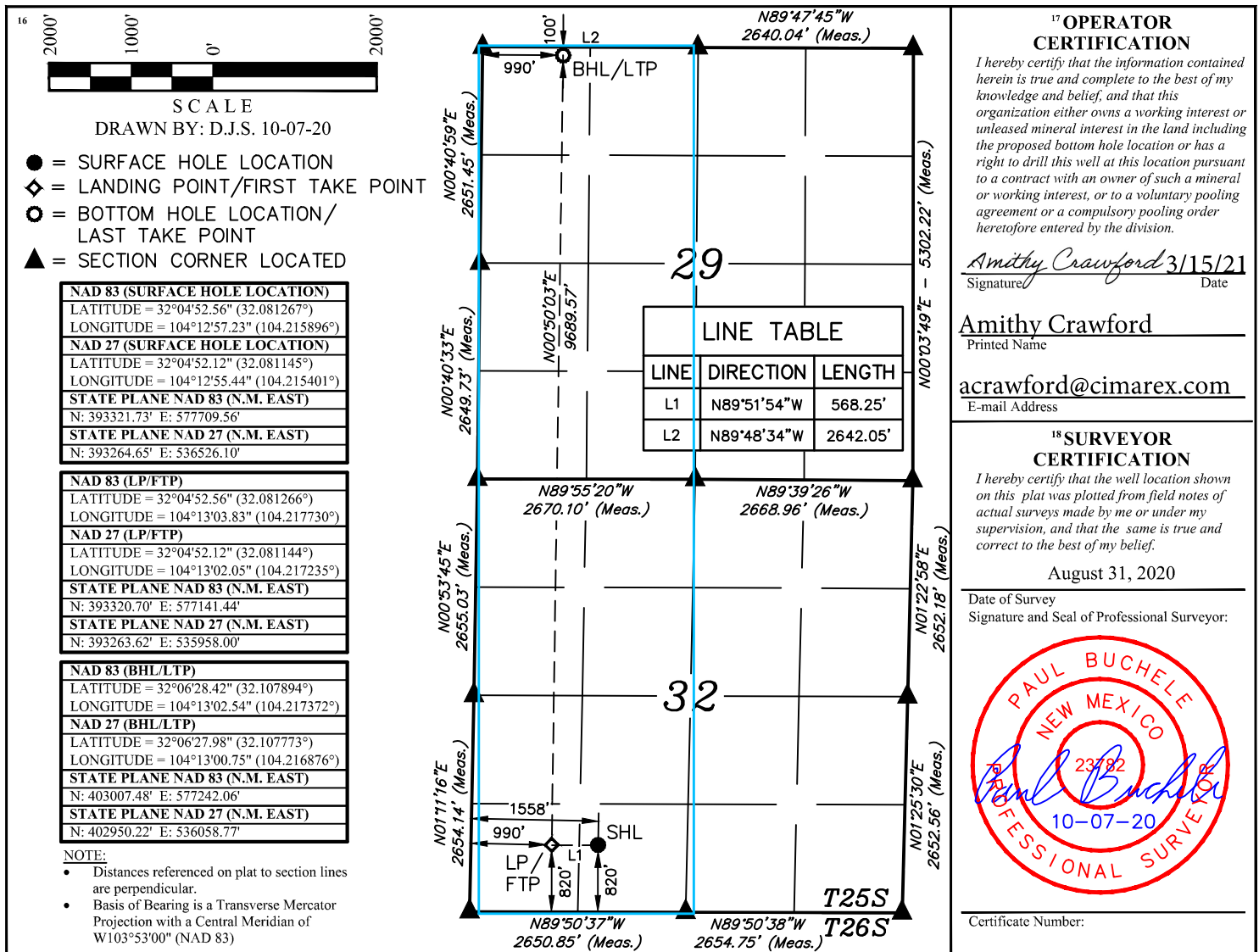
¹⁰ Surface Location

UL or lot no.	Section	Township	Range	Lot Idn	Feet from the	North/South line	Feet from the	East/West line	County
N	32	25S	27E		820	SOUTH	1558	WEST	EDDY

¹¹ Bottom Hole Location If Different From Surface

UL or lot no.	Section	Township	Range	Lot Idn	Feet from the	North/South line	Feet from the	East/West line	County
D	29	25S	27E		100	NORTH	990	WEST	EDDY
¹² Dedicated Acres 640	¹³ Joint or Infill	¹⁴ Consolidation Code	¹⁵ Order No.						

No allowable will be assigned to this completion until all interests have been consolidated or a non-standard unit has been approved by the division.



State of New Mexico
Energy, Minerals and Natural Resources Department

Submit Electronically
Via E-permitting

Oil Conservation Division
1220 South St. Francis Dr.
Santa Fe, NM 87505

NATURAL GAS MANAGEMENT PLAN

This Natural Gas Management Plan must be submitted with each Application for Permit to Drill (APD) for a new or recompleted well.

Section 1 – Plan Description

Effective May 25, 2021

I. Operator: Cimarex Energy Company **OGRID:** 215099 **Date:** 5 / 3 / 2022

II. Type: ☒ Original ☐ Amendment due to ☐ 19.15.27.9.D(6)(a) NMAC ☐ 19.15.27.9.D(6)(b) NMAC ☐ Other.

If Other, please describe: _____

III. Well(s): Provide the following information for each new or recompleted well or set of wells proposed to be drilled or proposed to be recompleted from a single well pad or connected to a central delivery point.

Well Name	API	ULSTR	Footages	Anticipated Oil BBL/D	Anticipated Gas MCF/D	Anticipated Produced Water BBL/D
Southern Hills 32-29 Fed Com	2H	N, Sec 32 T25S, R27E	820 FSL/1558 FTL	1100	2750	5280

IV. Central Delivery Point Name: Southern Hills 32-29 CDP Sales [See 19.15.27.9(D)(1) NMAC]

V. Anticipated Schedule: Provide the following information for each new or recompleted well or set of wells proposed to be drilled or proposed to be recompleted from a single well pad or connected to a central delivery point.

Well Name	API	Spud Date	TD Reached Date	Completion Commencement Date	Initial Flow Back Date	First Production Date
Southern Hills 32-29 Fed Com	2H	3/1/2024	7/1/2024	1/1/2025	4/1/2025	4/1/2025

VI. Separation Equipment: ☒ Attach a complete description of how Operator will size separation equipment to optimize gas capture.

VII. Operational Practices: ☒ Attach a complete description of the actions Operator will take to comply with the requirements of Subsection A through F of 19.15.27.8 NMAC.

VIII. Best Management Practices: ☒ Attach a complete description of Operator's best management practices to minimize venting during active and planned maintenance.

Section 2 – Enhanced Plan**EFFECTIVE APRIL 1, 2022**

Beginning April 1, 2022, an operator that is not in compliance with its statewide natural gas capture requirement for the applicable reporting area must complete this section.

☒ Operator certifies that it is not required to complete this section because Operator is in compliance with its statewide natural gas capture requirement for the applicable reporting area.

IX. Anticipated Natural Gas Production:

Well	API	Anticipated Average Natural Gas Rate MCF/D	Anticipated Volume of Natural Gas for the First Year MCF

X. Natural Gas Gathering System (NGGS):

Operator	System	ULSTR of Tie-in	Anticipated Gathering Start Date	Available Maximum Daily Capacity of System Segment Tie-in

XI. Map. ☐ Attach an accurate and legible map depicting the location of the well(s), the anticipated pipeline route(s) connecting the production operations to the existing or planned interconnect of the natural gas gathering system(s), and the maximum daily capacity of the segment or portion of the natural gas gathering system(s) to which the well(s) will be connected.

XII. Line Capacity. The natural gas gathering system ☐ will ☐ will not have capacity to gather 100% of the anticipated natural gas production volume from the well prior to the date of first production.

XIII. Line Pressure. Operator ☐ does ☐ does not anticipate that its existing well(s) connected to the same segment, or portion, of the natural gas gathering system(s) described above will continue to meet anticipated increases in line pressure caused by the new well(s).

☐ Attach Operator's plan to manage production in response to the increased line pressure.

XIV. Confidentiality: ☐ Operator asserts confidentiality pursuant to Section 71-2-8 NMSA 1978 for the information provided in Section 2 as provided in Paragraph (2) of Subsection D of 19.15.27.9 NMAC, and attaches a full description of the specific information for which confidentiality is asserted and the basis for such assertion.

Section 3 - Certifications

Effective May 25, 2021

Operator certifies that, after reasonable inquiry and based on the available information at the time of submittal:

☒ Operator will be able to connect the well(s) to a natural gas gathering system in the general area with sufficient capacity to transport one hundred percent of the anticipated volume of natural gas produced from the well(s) commencing on the date of first production, taking into account the current and anticipated volumes of produced natural gas from other wells connected to the pipeline gathering system; or

☐ Operator will not be able to connect to a natural gas gathering system in the general area with sufficient capacity to transport one hundred percent of the anticipated volume of natural gas produced from the well(s) commencing on the date of first production, taking into account the current and anticipated volumes of produced natural gas from other wells connected to the pipeline gathering system.

If Operator checks this box, Operator will select one of the following:

Well Shut-In. ☐ Operator will shut-in and not produce the well until it submits the certification required by Paragraph (4) of Subsection D of 19.15.27.9 NMAC; or

Venting and Flaring Plan. ☐ Operator has attached a venting and flaring plan that evaluates and selects one or more of the potential alternative beneficial uses for the natural gas until a natural gas gathering system is available, including:

- (a) power generation on lease;
- (b) power generation for grid;
- (c) compression on lease;
- (d) liquids removal on lease;
- (e) reinjection for underground storage;
- (f) reinjection for temporary storage;
- (g) reinjection for enhanced oil recovery;
- (h) fuel cell production; and
- (i) other alternative beneficial uses approved by the division.

Section 4 - Notices

1. If, at any time after Operator submits this Natural Gas Management Plan and before the well is spud:

(a) Operator becomes aware that the natural gas gathering system it planned to connect the well(s) to has become unavailable or will not have capacity to transport one hundred percent of the production from the well(s), no later than 20 days after becoming aware of such information, Operator shall submit for OCD's approval a new or revised venting and flaring plan containing the information specified in Paragraph (5) of Subsection D of 19.15.27.9 NMAC; or

(b) Operator becomes aware that it has, cumulatively for the year, become out of compliance with its baseline natural gas capture rate or natural gas capture requirement, no later than 20 days after becoming aware of such information, Operator shall submit for OCD's approval a new or revised Natural Gas Management Plan for each well it plans to spud during the next 90 days containing the information specified in Paragraph (2) of Subsection D of 19.15.27.9 NMAC, and shall file an update for each Natural Gas Management Plan until Operator is back in compliance with its baseline natural gas capture rate or natural gas capture requirement.

2. OCD may deny or conditionally approve an APD if Operator does not make a certification, fails to submit an adequate venting and flaring plan which includes alternative beneficial uses for the anticipated volume of natural gas produced, or if OCD determines that Operator will not have adequate natural gas takeaway capacity at the time a well will be spud.

I certify that, after reasonable inquiry, the statements in and attached to this Natural Gas Management Plan are true and correct to the best of my knowledge and acknowledge that a false statement may be subject to civil and criminal penalties under the Oil and Gas Act.

Signature: 
Printed Name: Sarah Jordan
Title: Regulatory Analyst
E-mail Address: sarah.jordan@coterra.com
Date: 5/3/2022
Phone: 432/620-1909
OIL CONSERVATION DIVISION (Only applicable when submitted as a standalone form)
Approved By:
Title:
Approval Date:
Conditions of Approval:

From State of New Mexico, Natural Gas Management Plan

VI. Separation Equipment: Attach a complete description of how Operator will size separation equipment to optimize gas capture.

XEC Standard Response

Standard facility gas process flow begins at the inlet separator. These vessels are designed based off of forecasted rates and residence times in accordance with, and often greater than, API 12J. The separated gas is then routed to an additional separation vessel (ie sales scrubber) in order to extract liquids that may have carried over or developed due to the decrease in pressure. The sales scrubber is sized based on API 521. From the sales scrubber, the gas leaves the facility and enters the gas midstream gathering network.

Cimarex

VII. Operational Practices

Cimarex values the sustainable development of New Mexico's natural resources. Venting and flaring of natural gas is a source of waste in the industry, and Cimarex will ensure that its values are aligned with those of NMOCD. As such, Cimarex plans to take pointed steps to ensure compliance with Subsection A through F of 19.15.27.8 NMAC.

Specifically, below are the steps Cimarex will plan to follow under routine well commissioning and operations.

1. Capture or combust natural gas during drilling operations where technically feasible, using the best industry practices and control technologies.
 - a. All flares during these operations will be a minimum of 100ft away from the nearest surface-hole location.
2. All gas present during post-completion drill-out and flow back will be routed through separation equipment, and, if technically feasible, flare unsellable vapors rather than vent. Lastly, formal sales separator commissioning to process well-stream fluids and send gas to a gas flow line/collection system or use the gas for on-site fuel or beneficial usage, gas as soon as is safe and technically feasible.
3. Cimarex will ensure the flare or combustion equipment is properly sized to handle expected flow rates, ensure this equipment is equipped with an automatic or continuous ignition source, and ensure this equipment is designed for proper combustion efficiency.
4. If Cimarex must flare because gas is not meeting pipeline specifications, Cimarex will limit flaring to <60 days, analyze gas composition at least twice per week, and route gas into a gathering pipeline as soon as pipeline specifications are met.
5. Under routine production operations, Cimarex will not flare/vent unless:
 - a. Venting or flaring occurs due to an emergency or equipment malfunction.
 - b. Venting or flaring occurs as a result of unloading practices, and an operator is onsite (or within 30 minutes of drive time and posts contact information at the wellsite) until the end of unloading practice.
 - c. The venting or flaring occurs during automated plungerlift operations, in which case the Cimarex operator will work to optimize the plungerlift system to minimize venting/flaring.
 - d. The venting or flaring occurs during downhole well maintenance, in which case Cimarex will work to minimize venting or flaring operations to the extent that it does not pose a risk to safe operations.
 - e. The well is an exploratory well, the division has approved the well as an exploratory well, venting or flaring is limited to 12 months, as approved by the division, and venting/flaring does not cause Cimarex to breach its State-wide 98% gas capture requirement.
 - f. Venting or flaring occurs because the stock tanks or other low-pressure vessels are being gauged, sampled, or liquids are being loaded out.
 - g. The venting or flaring occurs because pressurized vessels are being maintained and are being blown-down or depressurized.
 - h. Venting or flaring occurs as a result of normal dehydration unit operations.

- i. Venting or flaring occurs as a result of bradenhead testing.
 - j. Venting or flaring occurs as a result of normal compressor operations, including general compressor operations, compressor engines and turbines.
 - k. Venting or flaring occurs as a result of a packer leakage test.
 - l. Venting or flaring occurs as a result of a production test lasting less than 24 hours unless otherwise approved by the division.
 - m. Venting or flaring occurs as a result of new equipment commissioning and is necessary to purge impurities from the pipeline or production equipment.
6. Cimarex will maintain its equipment in accordance with its Operations and Maintenance Program, to ensure venting or flaring events are minimized and that equipment is properly functioning.
7. Cimarex will install automatic tank gauging equipment on all production facilities constructed after May 25, 2021, to ensure minimal emissions from tank gauging practices.
8. By November 25, 2022, all Cimarex facilities equipped with flares or combustors will be equipped with continuous pilots or automatic igniters, and technology to ensure proper function, i.e. thermocouple, fire-eye, etc...
9. Cimarex will perform AVO (audio, visual, olfactory) facility inspections in accordance with NMOCD requirements. Specifically, Cimarex will:
 - a. Perform weekly inspections during the first year of production, and so long as production is greater than 60 MCFD.
 - b. If production is less than 60 MCFD, Cimarex will perform weekly AVO inspections when an operator is present on location, and inspections at least once per calendar month with at least 20 calendar days between inspections.
10. Cimarex will measure or estimate the volume of vented, flared or beneficially used natural gas, regardless of the reason or authorization for such venting or flaring.
11. On all facilities constructed after May 25, 2021, Cimarex will install metering where feasible and in accordance with available technology and best engineering practices, in an effort to measure how much gas could have been vented or flared.
 - a. In areas where metering is not technically feasible, such as low-pressure/low volume venting or flaring applications, engineering estimates will be used such that the methodology could be independently verified.
12. Cimarex will fulfill the division's requirements for reporting and filing of venting or flaring that exceeds 50 MCF in volume or last eight hours or more cumulatively within any 24-hour period.

VIII. Best Management Practices to minimize venting during active and planned maintenance

Cimarex strives to ensure minimal venting occurs during active and planned maintenance activities. Below is a description of common maintenance practices, and the steps Cimarex takes to limit venting exposure.

- **Workovers:**
 - Always strive to kill well when performing downhole maintenance.
 - If vapors or trapped pressure is present and must be relieved then:
 - Initial blowdown to production facility:
 - Route vapors to LP flare if possible/applicable
 - Blowdown to portable gas buster tank:
 - Vent to existing or portable flare if applicable.
- **Stock tank servicing:**
 - Minimize time spent with thief hatches open.
 - When cleaning or servicing via manway, suck tank bottoms to ensure minimal volatiles exposed to atmosphere.
 - Connect vacuum truck to low pressure flare while cleaning bottoms to limit venting.
 - Isolate the vent lines and overflows on the tank being serviced from other tanks.
- **Pressure vessel/compressor servicing and associated blowdowns:**
 - Route to flare where possible.
 - Blow vessel down to minimum available pressure via pipeline, prior to venting vessel.
 - Preemptively changing anodes to reduce failures and extended corrosion related servicing.
 - When cleaning or servicing via manway, suck vessel bottoms to ensure minimal volatiles exposed to atmosphere.
- **Flare/combustor maintenance:**
 - Minimize downtime by coordinating with vendor and Cimarex staff travel logistics.
 - Utilizing preventative and predictive maintenance programs to replace high wear components before failure.
 - Because the flare/combustor is the primary equipment used to limit venting practices, ensure flare/combustor is properly maintained and fully operational at all times via routine maintenance, temperature telemetry, onsite visual inspections.

The Cimarex expectation is to limit all venting exposure. Equipment that may not be listed on this document is still expected to be maintained and associated venting during such maintenance minimized.



U.S. Department of the Interior
BUREAU OF LAND MANAGEMENT

Drilling Plan Data Report

04/25/2022

APD ID: 10400068083

Submission Date: 03/17/2021

Highlighted data
reflects the most
recent changes

Operator Name: CIMAREX ENERGY COMPANY

Well Name: SOUTHERN HILLS 32-29 FEDERAL COM

Well Number: 2H

[Show Final Text](#)

Well Type: CONVENTIONAL GAS WELL

Well Work Type: Drill

Section 1 - Geologic Formations

Formation ID	Formation Name	Elevation	True Vertical Depth	Measured Depth	Lithologies	Mineral Resources	Producing Formation
1670967	RUSTLER	0	550	550	ANHYDRITE	USEABLE WATER	N
1670968	TOP SALT	-1255	1255	1255	SALT	NONE	N
1670969	CASTILE	-1879	1879	1879	SALT	NONE	N
1670970	BELL CANYON	-2086	2086	2086	SANDSTONE	NONE	N
1670971	CHERRY CANYON	-3004	3004	3004	SANDSTONE	NONE	N
1670972	BRUSHY CANYON	-4037	4037	4037	SANDSTONE	NATURAL GAS, OIL	N
1670973	BONE SPRING	-5623	5623	5623	LIMESTONE	NATURAL GAS, OIL	N
1670974	BONE SPRING 1ST	-6579	6579	6579	SANDSTONE	NATURAL GAS, OIL	N
1670975	BONE SPRING 2ND	-6827	6827	6827	SANDSTONE	NATURAL GAS, OIL	N
1670976	BONE SPRING 3RD	-8405	8405	8405	SANDSTONE	NATURAL GAS, OIL	N
1670977	WOLFCAMP	-8748	8748	8748	SHALE	NATURAL GAS, OIL	Y

Section 2 - Blowout Prevention

Pressure Rating (PSI): 2M

Rating Depth: 1950

Equipment: A BOP consisting of three rams, including one blind ram and two pipe rams and one annular preventer. An accumulator that meets the requirements in Onshore Order #2 for the pressure rating of the BOP stack. A rotating head may be installed as needed. A Kelly clock will be installed and maintained in operable condition and a drill string safety valve in the open position will be available on the rig floor.

Requesting Variance? YES

Variance request: Co-flex line between the BOP and choke manifold. Certification for proposed co-flex hose is attached. The hose is not required by the manufacturer to be anchored. In the event the specific hose is not available, one of equal or higher rating will be used. Variance to include Hammer Union connections on lines downstream of the buffer tank only.

Release Procedure: A multi-bow wellhead system will be utilized. After running the 13-3/8" surface casing, a 13 5/8 BOP/BOPE system with a minimum working pressure of 3000 psi will be installed on the wellhead system and will be

Operator Name: CIMAREX ENERGY COMPANY**Well Name:** SOUTHERN HILLS 32-29 FEDERAL COM**Well Number:** 2H

pressure tested to 250 psi low followed by a 2000 psi test. Annular will be tested to 100% of working pressure. The pressure test will be repeated at least every 30 days, as per Onshore Order No. 2. The multi-bowl wellhead will be installed by vendors representative. A copy of the installation instructions has been sent to the BLM field office. The wellhead will be installed by a third-party welder, monitored by the wellhead vendor representative. All BOP equipment will be tested utilizing a conventional test plug. Not a cup or J-packer type. A solid steel body pack-off will be utilized after running and cementing the intermediate casing. After installation the pack-off and lower flange will be pressure tested to 2000 psi. The surface casing string will be tested as per Onshore Order No. 2 to at least 0.22 psi/ft or 1500 psi, whichever is greater. The casing strings utilizing steel body pack-off will be tested to 70% of casing burst. If well conditions dictate conventional slips will be set and BOPE will be tested to appropriate pressures based on permitted pressure requirements.

Choke Diagram Attachment:

Southern_Hills_32_29_Fed_Com_2H_Choke_2M_20210317114826.pdf

BOP Diagram Attachment:

Southern_Hills_32_29_Fed_Com_2H_BOP_2M_20210317114834.pdf

Pressure Rating (PSI): 5M**Rating Depth:** 18592

Equipment: A BOP consisting of three rams, including one blind ram and two pipe rams and one annular preventer. An accumulator that meets the requirements in Onshore Order #2 for the pressure rating of the BOP stack. A rotating head may be installed as needed. A Kelly clock will be installed and maintained in operable condition and a drill string safety valve in the open position will be available on the rig floor.

Requesting Variance? YES

Variance request: Co-flex line between the BOP and choke manifold. Certification for proposed co-flex hose is attached. The hose is not required by the manufacturer to be anchored. In the event the specific hose is not available, one of equal or higher rating will be used. Variance to include Hammer Union connections on lines downstream of the buffer tank only.

Testing Procedure: A multi-bowl wellhead system will be utilized. After running the 13-3/8" surface casing, a 13 5/8 BOP/BOPE system with a minimum working pressure of 5000 psi will be installed on the wellhead system and will be pressure tested to 250 psi low followed by a 5000 psi test. Annular will be tested to 100% of working pressure. The pressure test will be repeated at least every 30 days, as per Onshore Order No. 2. The multi-bowl wellhead will be installed by vendors representative. A copy of the installation instructions has been sent to the BLM field office. The wellhead will be installed by a third-party welder, monitored by the wellhead vendor representative. All BOP equipment will be tested utilizing a conventional test plug. Not a cup or J-packer type. A solid steel body pack-off will be utilized after running and cementing the intermediate casing. After installation the pack-off and lower flange will be pressure tested to 5000 psi. Slips will be utilized after running and cementing the production casing. After installation of the slips and wellhead on the production casing, a 13 5/8 BOP/BOPE system with a minimum working pressure of 5000 psi will be installed on the wellhead system and will be pressure tested to 250 psi low followed by a 5000 psi test. Annular will be tested to 100% of working pressure. The pressure test will be repeated at least every 30 days, as per Onshore Order No. 2. The surface casing string will be tested as per Onshore Order No. 2 to at least 0.22 psi/ft or 1500 psi, whichever is greater. The casing string utilizing steel body pack-off will be tested to 70% of casing burst. If well conditions dictate conventional slips will be set and BOPE will be tested to appropriate pressures based on permitted pressure requirements.

Choke Diagram Attachment:

Southern_Hills_32_29_Fed_Com_2H_Choke_5M_20210317115116.pdf

BOP Diagram Attachment:

Southern_Hills_32_29_Fed_Com_2H_BOP_5M_6in_hole_20210317115128.pdf

Operator Name: CIMAREX ENERGY COMPANY**Well Name:** SOUTHERN HILLS 32-29 FEDERAL COM**Well Number:** 2H**Pressure Rating (PSI):** 5M**Rating Depth:** 9253

Equipment: A BOP consisting of three rams, including one blind ram and two pipe rams and one annular preventer. An accumulator that meets the requirements in Onshore Order #2 for the pressure rating of the BOP stack. A rotating head may be installed as needed. A Kelly clock will be installed and maintained in operable condition and a drill string safety valve in the open position will be available on the rig floor.

Requesting Variance? YES

Variance request: Co-flex line between the BOP and choke manifold. Certification for proposed co-flex hose is attached. The hose is not required by the manufacturer to be anchored. In the event the specific hose is not available, one of equal or higher rating will be used. Variance to include Hammer Union connections on lines downstream of the buffer tank only.

Testing Procedure: A multi-bowl wellhead system will be utilized. After running the 13-3/8" surface casing, a 13 5/8 BOP/BOPE system with a minimum working pressure of 5000 psi will be installed on the wellhead system and will be pressure tested to 250 psi low followed by a 5000 psi test. Annular will be tested to 100% of working pressure. The pressure test will be repeated at least every 30 days, as per Onshore Order No. 2. The multi-bowl wellhead will be installed by vendors representative. A copy of the installation instructions has been sent to the BLM field office. The wellhead will be installed by a third-party welder, monitored by the wellhead vendor representative. All BOP equipment will be tested utilizing a conventional test plug. Not a cup or J-packer type. A solid steel body pack-off will be utilized after running and cementing the intermediate casing. After installation the pack-off and lower flange will be pressure tested to 5000 psi. Slips will be utilized after running and cementing the production casing. After installation of the slips and wellhead on the production casing, a 13 5/8 BOP/BOPE system with a minimum working pressure of 5000 psi will be installed on the wellhead system and will be pressure tested to 250 psi low followed by a 5000 psi test. Annular will be tested to 100% of working pressure. The pressure test will be repeated at least every 30 days, as per Onshore Order No. 2. The surface casing string will be tested as per Onshore Order No. 2 to at least 0.22 psi/ft or 1500 psi, whichever is greater. The casing string utilizing steel body pack-off will be tested to 70% of casing burst. If well conditions dictate conventional slips will be set and BOPE will be tested to appropriate pressures based on permitted pressure requirements.

Choke Diagram Attachment:

Southern_Hills_32_29_Fed_Com_2H_Choke_5M_20210317114948.pdf

BOP Diagram Attachment:

Southern_Hills_32_29_Fed_Com_2H_BOP_5M_20210317114956.pdf

Section 3 - Casing

Casing ID	String Type	Hole Size	Csg Size	Condition	Standard	Tapered String	Top Set MD	Bottom Set MD	Top Set TVD	Bottom Set TVD	Top Set MSL	Bottom Set MSL	Calculated casing length MD	Grade	Weight	Joint Type	Collapse SF	Burst SF	Joint SF Type	Joint SF	Body SF Type	Body SF
1	SURFACE	17.5	13.375	NEW	API	N	0	600	0	600	3244	2644	600	OTH ER	48	ST&C	2.85	6.66	BUOY	11.1 8	BUOY	11.1 8
2	INTERMEDIATE	12.25	9.625	NEW	API	N	0	1950	0	1950	3244	1294	1950	J-55	36	LT&C	1.99	3.47	BUOY	6.45	BUOY	6.45
3	PRODUCTION	8.75	7.0	NEW	API	N	0	7728	0	7728	3244	-4484	7728	L-80	26	LT&C	1.5	2	BUOY	2.18	BUOY	2.18
4	PRODUCTION	8.75	7.0	NEW	API	N	7728	9253	7728	9034	-4484	-5790	1525	L-80	26	BUTT	1.28	1.71	BUOY	15.0 5	BUOY	15.0 5

Operator Name: CIMAREX ENERGY COMPANY**Well Name:** SOUTHERN HILLS 32-29 FEDERAL COM**Well Number:** 2H

Casing ID	String Type	Hole Size	Csg Size	Condition	Standard	Tapered String	Top Set MD	Bottom Set MD	Top Set TVD	Bottom Set TVD	Top Set MSL	Bottom Set MSL	Calculated casing length MD	Grade	Weight	Joint Type	Collapse SF	Burst SF	Joint SF Type	Joint SF	Body SF Type	Body SF
5	COMPLETION SYSTEM	6	4.5	NEW	API	N	7628	18592	7628	9123	-4384	-5879	10964	P-110	11.6	BUTT	1.39	1.96	BUOY	21.16	BUOY	21.16

Casing Attachments**Casing ID:** 1 **String Type:** SURFACE**Inspection Document:****Spec Document:****Tapered String Spec:****Casing Design Assumptions and Worksheet(s):**

Southern_Hills_32_29_Fed_Com_2H__Casing_Assumptions_20210317115244.pdf

Casing ID: 2 **String Type:** INTERMEDIATE**Inspection Document:****Spec Document:****Tapered String Spec:****Casing Design Assumptions and Worksheet(s):**

Southern_Hills_32_29_Fed_Com_2H__Casing_Assumptions_20210317115644.pdf

Operator Name: CIMAREX ENERGY COMPANY**Well Name:** SOUTHERN HILLS 32-29 FEDERAL COM**Well Number:** 2H**Casing Attachments**

Casing ID: 3 **String Type:** PRODUCTION**Inspection Document:****Spec Document:****Tapered String Spec:****Casing Design Assumptions and Worksheet(s):**Southern_Hills_32_29_Fed_Com_2H__Casing_Assumptions_20210317115848.pdf

Casing ID: 4 **String Type:** PRODUCTION**Inspection Document:****Spec Document:****Tapered String Spec:****Casing Design Assumptions and Worksheet(s):**Southern_Hills_32_29_Fed_Com_2H__Casing_Assumptions_20210317115948.pdf

Casing ID: 5 **String Type:** COMPLETION SYSTEM**Inspection Document:****Spec Document:****Tapered String Spec:****Casing Design Assumptions and Worksheet(s):**Southern_Hills_32_29_Fed_Com_2H__Casing_Assumptions_20210317120213.pdf

Section 4 - Cement

Operator Name: CIMAREX ENERGY COMPANY**Well Name:** SOUTHERN HILLS 32-29 FEDERAL COM**Well Number:** 2H

String Type	Lead/Tail	Stage Tool Depth	Top MD	Bottom MD	Quantity(sx)	Yield	Density	Cu Ft	Excess%	Cement type	Additives
PRODUCTION	Lead		0	0	0	0	0	0	0	0	0

SURFACE	Lead		0	600	182	1.72	13.5	313	38	Class C	Bentonite
SURFACE	Tail		0	600	195	1.34	14.8	261	38	Class C	LCM
INTERMEDIATE	Lead		0	1950	361	1.88	12.9	678	52	35:65 (POZ C)	Salt Bentonite
INTERMEDIATE	Tail		0	1950	112	1.36	14.8	152	52	Class C	Retarder
PRODUCTION	Lead		0	9253	423	3.64	10.3	1539	25	Tuned Light	LCM
PRODUCTION	Tail		0	9253	109	1.3	14.2	141	25	50:50 (Poz C)	Salt Bentonite Fluid Loss Dispersant SMS
COMPLETION SYSTEM	Lead		7628	1859 2	695	1.3	14.2	903	10	50:50 (POZ H)	Salt Bentonite Fluid Loss Dispersant SMS

Section 5 - Circulating Medium

Mud System Type: Closed**Will an air or gas system be Used?** NO**Description of the equipment for the circulating system in accordance with Onshore Order #2:****Diagram of the equipment for the circulating system in accordance with Onshore Order #2:**

Describe what will be on location to control well or mitigate other conditions: Sufficient mud materials will be kept on location at all times in order to combat lost circulation or unexpected kicks. In order to run DSTs, open hole logs, and casing, the viscosity and water loss may have to be adjusted in order to meet these needs.

Describe the mud monitoring system utilized: PVT/Pason/Visual Monitoring

Circulating Medium Table

Operator Name: CIMAREX ENERGY COMPANY**Well Name:** SOUTHERN HILLS 32-29 FEDERAL COM**Well Number:** 2H

Top Depth	Bottom Depth	Mud Type	Min Weight (lbs/gal)	Max Weight (lbs/gal)	Density (lbs/cu ft)	Gel Strength (lbs/100 sqft)	PH	Viscosity (CP)	Salinity (ppm)	Filtration (cc)	Additional Characteristics
0	600	OTHER : Fresh Water	7.83	8.33							
600	1950	SALT SATURATED	9.5	10							
1950	9253	OTHER : Cut Brine or OBM	8.5	9							
9253	18592	OIL-BASED MUD	11	11.5							

Section 6 - Test, Logging, Coring

List of production tests including testing procedures, equipment and safety measures:

No DST planned

List of open and cased hole logs run in the well:

GAMMA RAY LOG,COMPENSATED NEUTRON LOG,DIRECTIONAL SURVEY,

Coring operation description for the well:

N/A

Section 7 - Pressure

Anticipated Bottom Hole Pressure: 5455

Anticipated Surface Pressure: 3447

Anticipated Bottom Hole Temperature(F): 162

Anticipated abnormal pressures, temperatures, or potential geologic hazards? YES

Describe:

Lost circulation may be encountered in the Delaware mountain group. Abnormal pressure as well as hole stability issues may be encountered in the Wolfcamp.

Contingency Plans geohazards description:

Lost circulation material will be available, as well as additional drilling fluid along with the fluid volume in the drilling rig pit system. Drilling fluid can be mixed on location or mixed in vendor mud plant and trucked to location if needed. Sufficient barite will be available to maintain appropriate mud weight for the Wolfcamp interval.

Contingency Plans geohazards attachment:

Hydrogen Sulfide drilling operations plan required? YES

Hydrogen sulfide drilling operations plan:

Operator Name: CIMAREX ENERGY COMPANY

Well Name: SOUTHERN HILLS 32-29 FEDERAL COM

Well Number: 2H

Section 8 - Other Information

Proposed horizontal/directional/multi-lateral plan submission:

Southern_Hills_32_29_Fed_Com_2H_Directional_20210317121305.pdf

Southern_Hills_32_29_Fed_Com_2H_AC_Report_20210317121312.pdf

Other proposed operations facets description:

Other proposed operations facets attachment:

Southern_Hills_32_29_Fed_Com_2H_Drilling_Plan_20210317121352.pdf

Southern_Hills_32_29_Fed_Com_2H_Gas_Capture_Plan_20210317121400.pdf

Other Variance attachment:

Southern_Hills_32_29_Fed_Com_2H_Flex_Hose_20210317121429.pdf

Southern_Hills_32_29_Fed_Com_2H_Multibowl_Wellhead_20210317121533.pdf

1. Geological Formations

TVD of target 9,123

Pilot Hole TD N/A

MD at TD 18,592

Deepest expected fresh water

Formation	Depth (TVD) from KB	Water/Mineral Bearing/Target Zone	Hazards
Rustler	550	Useable Water	
Top Salt	1255	N/A	
Castille	1879	N/A	
Bell Canyon	2086	N/A	
Cherry Canyon	3004	N/A	
Brushy Canyon	4037	Hydrocarbons	
BoneSpring	5623	Hydrocarbons	
1st BoneSpring	6579	Hydrocarbons	
2nd BoneSpring	6827	Hydrocarbons	
3rd BoneSpring	8405	Hydrocarbons	
Wolfcamp	8748	Hydrocarbons	

2. Casing Program

Hole Size	Casing Depth From	Casing Depth To	Setting Depth TVD	Casing Size	Weight (lb/ft)	Grade	Conn.	SF Collapse	SF Burst	SF Tension
17 1/2	0	600	600	13-3/8"	48.00	H-40/J-55 Hybrid	ST&C	2.85	6.66	11.18
12 1/4	0	1950	1950	9-5/8"	36.00	J-55	LT&C	1.99	3.47	6.45
8 3/4	0	7728	7728	7"	26.00	L-80	LT&C	1.50	2.00	2.18
8 3/4	7728	9253	9034	7"	26.00	L-80	BT&C	1.28	1.71	15.05
6	7628	18592	9123	4-1/2"	11.60	P-110	BT&C	1.39	1.96	21.16
BLM Minimum Safety Factor								1.125	1	1.6 Dry 1.8 Wet

TVD was used on all calculations.

All casing strings will be tested in accordance with Onshore Oil and Gas Order #2 III.B.1.h

Cimarex Energy Co., Southern Hills 32-29 Fed Com 2H

	Y or N
Is casing new? If used, attach certification as required in Onshore Order #1	Y
Does casing meet API specifications? If no, attach casing specification sheet.	Y
Is premium or uncommon casing planned? If yes attach casing specification sheet.	N
Does the above casing design meet or exceed BLM's minimum standards? If not provide justification (loading assumptions, casing design criteria).	Y
Will the intermediate pipe be kept at a minimum 1/3 fluid filled to avoid approaching the collapse pressure rating of the casing?	Y
Is well located within Capitan Reef?	N
If yes, does production casing cement tie back a minimum of 50' above the Reef?	N
Is well within the designated 4 string boundary.	N
Is well located in SOPA but not in R-111-P?	N
If yes, are the first 2 strings cemented to surface and 3rd string cement tied back 500' into previous casing?	N
Is well located in R-111-P and SOPA?	N
If yes, are the first three strings cemented to surface?	N
Is 2nd string set 100' to 600' below the base of salt?	N
Is well located in high Cave/Karst?	N
If yes, are there two strings cemented to surface?	N
(For 2 string wells) If yes, is there a contingency casing if lost circulation occurs?	N
Is well located in critical Cave/Karst?	N
If yes, are there three strings cemented to surface?	N
Is AC Report included?	N

3. Cementing Program

Casing	# Sk	Wt. lb/gal	Yld ft ³ /sack	H ₂ O gal/sk	500# Comp. Strength (hours)	Slurry Description
Surface	182	13.50	1.72	9.15	15.5	Lead: Class C + Bentonite
	195	14.80	1.34	6.32	9.5	Tail: Class C + LCM
Intermediate	361	12.90	1.88	9.65	12	Lead: 35:65 (Poz:C) + Salt + Bentonite
	112	14.80	1.36	6.57	9.5	Tail: Class C + Retarder
Production	423	10.30	3.64	22.18		Lead: Tuned Light + LCM
	109	14.20	1.30	5.86	14:30	Tail: 50:50 (Poz:H) + Salt + Bentonite + Fluid Loss + Dispersant + SMS
Completion System	695	14.20	1.30	5.86	14:30	Tail: 50:50 (Poz:H) + Salt + Bentonite + Fluid Loss + Dispersant + SMS

Casing String	TOC	% Excess
Surface	0	38
Intermediate	0	52
Production	1750	25
Completion System	9053	10

Cimarex request the ability to perform casing integrity tests after plug bump of cement job.

4. Pressure Control Equipment

A variance is requested for the use of a diverter on the surface casing. See attached for schematic.					
BOP installed and tested before drilling which hole?	Size	Min Required WP	Type		Tested To
12 1/4	13 5/8	2M	Annular	X	2M
			Blind Ram		
			Pipe Ram		
			Double Ram	X	
			Other		
8 3/4	13 5/8	5M	Annular	X	5M
			Blind Ram		
			Pipe Ram	X	
			Double Ram	X	
			Other		
6	13 5/8	5M	Annular	X	5M
			Blind Ram		
			Pipe Ram	X	
			Double Ram	X	
			Other		

BOP/BOPE will be tested by an independent service company to 250 psi low and the high pressure indicated above per Onshore Order 2 requirements. The System may be upgraded to a higher pressure but still tested to the working pressure listed in the table above. If the system is upgraded all the components installed will be functional and tested.

Pipe rams will be operationally checked each 24 hour period. Blind rams will be operationally checked on each trip out of the hole. These checks will be noted on the daily tour sheets. Other accessories to the BOP equipment will include a Kelly cock and floor safety valve (inside BOP) and choke lines and choke manifold. See attached schematics.

X	Formation integrity test will be performed per Onshore Order #2. On Exploratory wells or on that portion of any well approved for a 5M BOPE system or greater, a pressure integrity test of each casing shoe shall be performed. Will be tested in accordance with Onshore Oil and Gas Order #2 III.B.1.i.				
X	A variance is requested for the use of a flexible choke line from the BOP to Choke Manifold. See attached for specs and hydrostatic test chart.				
N	Are anchors required by manufacturer?				

5. Mud Program

Depth	Type	Weight (ppg)	Viscosity	Water Loss
0' to 600'	Fresh Water	7.83 - 8.33	28	N/C
600' to 1950'	Brine Water	9.50 - 10.00	30-32	N/C
1950' to 9253'	Cut Brine or OBM	8.50 - 9.00	27-70	N/C
9253' to 18592'	OBM	11.00 - 11.50	50-70	N/C

Sufficient mud materials to maintain mud properties and meet minimum lost circulation and weight increase requirements will be kept on location at all times.

What will be used to monitor the loss or gain of fluid?	PVT/Pason/Visual Monitoring
---	-----------------------------

6. Logging and Testing Procedures

Logging, Coring and Testing	
	Will run GR/CNL from TD to surface (horizontal well – vertical portion of hole). Stated logs run will be in the Completion Report and submitted to the BLM.
	No logs are planned based on well control or offset log information.
	Drill stem test?
	Coring?

Additional Logs Planned	Interval
-------------------------	----------

7. Drilling Conditions

Condition	
BH Pressure at deepest TVD	5455 psi
Abnormal Temperature	No

Hydrogen Sulfide (H2S) monitors will be installed prior to drilling out the surface shoe. If H2S is detected in concentrations greater than 100 ppm, the operator will comply with the provisions of Onshore Oil and Gas Order #6. If Hydrogen Sulfide is encountered, measured values and formations will be provided to the BLM.

	H2S is present
	H2S plan is attached

8. Other Facets of Operation**9. Wellhead**

A multi-bowl wellhead system will be utilized.

After running the 13-3/8" surface casing, a 13 5/8" BOP/BOPE system with a minimum working pressure of 5000 psi will be installed on the wellhead system and will be pressure tested to 250 psi low followed by a 5000 psi test. Annular will be tested to 100% of working pressure. The pressure test will be repeated at least every 30 days, as per Onshore Order No. 2.

The multi-bowl wellhead will be installed by vendor's representative. A copy of the installation instructions has been sent to the BLM field office.

The wellhead will be installed by a third-party welder while being monitored by the wellhead vendor representative.

All BOP equipment will be tested utilizing a conventional test plug. Not a cup or J-packer type.

A solid steel body pack-off will be utilized after running and cementing the intermediate casing. After installation the pack-off and lower flange will be pressure tested to 5000 psi.

A solid steel body pack-off will be utilized after running and cementing the production casing. After installation the pack-off and lower flange will be pressure tested to 5000 psi.

All casing strings will be tested as per Onshore Order No.2 to at least 0.22 psi/ft or 1,500 whichever is greater and not to exceed 70% of casing burst.

If well conditions dictate conventional slips will be set and BOPE will be tested to appropriate pressures based on permitted pressure requirements.



Cimarex Southern Hills 32-29 Fed Com 2H Rev0 RM 18Jan21 Proposal

Geodetic Report

(Non-Def Plan)



Report Date:	January 19, 2021 - 08:55 AM	Survey / DLS Computation:	Minimum Curvature / Lubinski
Client:	Cimarex Energy	Vertical Section Azimuth:	0.595 ° (Grid North)
Field:	NM Eddy County (NAD 83)	Vertical Section Origin:	0.000 ft, 0.000 ft
Structure / Slot:	Cimarex Southern Hills 32-29 Fed Com 2H / New Slot	TVD Reference Datum:	RKB
Well:	Southern Hills 32-29 Fed Com 2H	TVD Reference Elevation:	3267.200 ft above MSL
Borehole:	Southern Hills 32-29 Fed Com 2H	Seabed / Ground Elevation:	3244.200 ft above MSL
UWI / API#:	Unknown / Unknown	Magnetic Declination:	7.056 °
Survey Name:	Cimarex Southern Hills 32-29 Fed Com 2H Rev0 RM 18Jan21	Total Gravity Field Strength:	998.4345mgn (9.80665 Based)
Survey Date:	January 18, 2021	Gravity Model:	GARM
Tort / AHD / DDI / ERD Ratio:	113.745 ° / 10256.361 ft / 6.376 / 1.124	Total Magnetic Field Strength:	47619.245 nT
Coordinate Reference System:	NAD83 New Mexico State Plane, Eastern Zone, US Feet	Magnetic Dip Angle:	59.668 °
Location Lat / Long:	N 32° 4' 52.55993", W 104° 12' 57.22533"	Declination Date:	January 18, 2021
Location Grid N/E Y/X:	N 393321.730 ftUS, E 577709.560 ftUS	Magnetic Declination Model:	HDGM 2020
CRS Grid Convergence Angle:	0.0624 °	North Reference:	Grid North
Grid Scale Factor:	0.99991061	Grid Convergence Used:	0.0624 °
Version / Patch:	2.10.824.0	Total Corr Mag North→Grid North:	6.9939 °
		Local Coord Referenced To:	Well Head

Comments	MD (ft)	Incl (°)	Azim Grid (°)	TVD (ft)	VSEC (ft)	NS (ft)	EW (ft)	DLS (°/100ft)	Northing (ftUS)	Easting (ftUS)	Latitude (N/S ° ' ")	Longitude (E/W ° ' ")
SHL [820' FSL, 1558' FWL]	0.00	0.00	269.90	0.00	0.00	0.00	0.00	N/A	393321.73	577709.56	N 32 4 52.56	W 104 12 57.23
Rustler	100.00	0.00	269.90	100.00	0.00	0.00	0.00	0.00	393321.73	577709.56	N 32 4 52.56	W 104 12 57.23
	200.00	0.00	269.90	200.00	0.00	0.00	0.00	0.00	393321.73	577709.56	N 32 4 52.56	W 104 12 57.23
	300.00	0.00	269.90	300.00	0.00	0.00	0.00	0.00	393321.73	577709.56	N 32 4 52.56	W 104 12 57.23
	400.00	0.00	269.90	400.00	0.00	0.00	0.00	0.00	393321.73	577709.56	N 32 4 52.56	W 104 12 57.23
	500.00	0.00	269.90	500.00	0.00	0.00	0.00	0.00	393321.73	577709.56	N 32 4 52.56	W 104 12 57.23
	550.00	0.00	269.90	550.00	0.00	0.00	0.00	0.00	393321.73	577709.56	N 32 4 52.56	W 104 12 57.23
	600.00	0.00	269.90	600.00	0.00	0.00	0.00	0.00	393321.73	577709.56	N 32 4 52.56	W 104 12 57.23
	700.00	0.00	269.90	700.00	0.00	0.00	0.00	0.00	393321.73	577709.56	N 32 4 52.56	W 104 12 57.23
	800.00	0.00	269.90	800.00	0.00	0.00	0.00	0.00	393321.73	577709.56	N 32 4 52.56	W 104 12 57.23
	900.00	0.00	269.90	900.00	0.00	0.00	0.00	0.00	393321.73	577709.56	N 32 4 52.56	W 104 12 57.23
Salado (Top Salt)	1000.00	0.00	269.90	1000.00	0.00	0.00	0.00	0.00	393321.73	577709.56	N 32 4 52.56	W 104 12 57.23
	1100.00	0.00	269.90	1100.00	0.00	0.00	0.00	0.00	393321.73	577709.56	N 32 4 52.56	W 104 12 57.23
	1200.00	0.00	269.90	1200.00	0.00	0.00	0.00	0.00	393321.73	577709.56	N 32 4 52.56	W 104 12 57.23
	1255.00	0.00	269.90	1255.00	0.00	0.00	0.00	0.00	393321.73	577709.56	N 32 4 52.56	W 104 12 57.23
	1300.00	0.00	269.90	1300.00	0.00	0.00	0.00	0.00	393321.73	577709.56	N 32 4 52.56	W 104 12 57.23
Catille (Base Salt)	1400.00	0.00	269.90	1400.00	0.00	0.00	0.00	0.00	393321.73	577709.56	N 32 4 52.56	W 104 12 57.23
	1500.00	0.00	269.90	1500.00	0.00	0.00	0.00	0.00	393321.73	577709.56	N 32 4 52.56	W 104 12 57.23
	1600.00	0.00	269.90	1600.00	0.00	0.00	0.00	0.00	393321.73	577709.56	N 32 4 52.56	W 104 12 57.23
	1700.00	0.00	269.90	1700.00	0.00	0.00	0.00	0.00	393321.73	577709.56	N 32 4 52.56	W 104 12 57.23
	1800.00	0.00	269.90	1800.00	0.00	0.00	0.00	0.00	393321.73	577709.56	N 32 4 52.56	W 104 12 57.23
Bell Canyon (Top Delaware)	1879.00	0.00	269.90	1879.00	0.00	0.00	0.00	0.00	393321.73	577709.56	N 32 4 52.56	W 104 12 57.23
	1900.00	0.00	269.90	1900.00	0.00	0.00	0.00	0.00	393321.73	577709.56	N 32 4 52.56	W 104 12 57.23
	2000.00	0.00	269.90	2000.00	0.00	0.00	0.00	0.00	393321.73	577709.56	N 32 4 52.56	W 104 12 57.23
Nudge 2"/100' DLS	2086.00	0.00	269.90	2086.00	0.00	0.00	0.00	0.00	393321.73	577709.56	N 32 4 52.56	W 104 12 57.23
	2100.00	0.00	269.90	2100.00	0.00	0.00	0.00	0.00	393321.73	577709.56	N 32 4 52.56	W 104 12 57.23
	2200.00	0.00	269.90	2200.00	0.00	0.00	0.00	0.00	393321.73	577709.56	N 32 4 52.56	W 104 12 57.23
Hold Nudge	2300.00	0.00	269.90	2300.00	0.00	0.00	0.00	0.00	393321.73	577709.56	N 32 4 52.56	W 104 12 57.23
	2400.00	2.00	269.90	2399.98	-0.02	0.00	-1.75	2.00	393321.73	577707.82	N 32 4 52.56	W 104 12 57.25
	2500.00	4.00	269.90	2499.84	-0.09	-0.01	-6.98	2.00	393321.72	577702.58	N 32 4 52.56	W 104 12 57.31
	2600.00	6.00	269.90	2599.45	-0.19	-0.03	-15.69	2.00	393321.70	577693.87	N 32 4 52.56	W 104 12 57.41
	2700.00	8.00	269.90	2698.70	-0.34	-0.05	-27.88	2.00	393321.68	577681.68	N 32 4 52.56	W 104 12 57.55
	2800.00	10.00	269.90	2797.47	-0.53	-0.08	-43.52	2.00	393321.65	577666.04	N 32 4 52.56	W 104 12 57.73
	2900.00	12.00	269.90	2895.62	-0.76	-0.11	-62.60	2.00	393321.62	577646.96	N 32 4 52.56	W 104 12 57.95
	3000.00	12.00	269.90	2993.44	-1.02	-0.15	-83.39	0.00	393321.58	577626.17	N 32 4 52.56	W 104 12 58.19
	3010.80	12.00	269.90	3004.00	-1.04	-0.16	-85.64	0.00	393321.57	577623.93	N 32 4 52.56	W 104 12 58.22
	3100.00	12.00	269.90	3091.25	-1.27	-0.19	-104.18	0.00	393321.54	577605.38	N 32 4 52.56	W 104 12 58.44
Brushy Canyon	3200.00	12.00	269.90	3189.07	-1.52	-0.23	-124.98	0.00	393321.50	577584.60	N 32 4 52.56	W 104 12 58.68
	3300.00	12.00	269.90	3286.88	-1.78	-0.26	-145.77	0.00	393321.47	577563.81	N 32 4 52.56	W 104 12 58.92
	3400.00	12.00	269.90	3384.70	-2.03	-0.30	-166.56	0.00	393321.43	577543.02	N 32 4 52.56	W 104 12 59.16
	3500.00	12.00	269.90	3482.51	-2.29	-0.34	-187.35	0.00	393321.39	577522.23	N 32 4 52.56	W 104 12 59.40
	3600.00	12.00	269.90	3580.33	-2.54	-0.38	-208.14	0.00	393321.35	577501.44	N 32 4 52.56	W 104 12 59.64
	3700.00	12.00	269.90	3678.14	-2.79	-0.42	-228.93	0.00	393321.31	577480.65	N 32 4 52.56	W 104 12 59.89
	3800.00	12.00	269.90	3775.96	-3.05	-0.45	-249.72	0.00	393321.28	577459.86	N 32 4 52.56	W 104 13 0.13
	3900.00	12.00	269.90	3873.77	-3.30	-0.49	-270.51	0.00	393321.24	577439.07	N 32 4 52.56	W 104 13 0.37
	4000.00	12.00	269.90	3971.59	-3.55	-0.53	-291.31	0.00	393321.20	577418.28	N 32 4 52.56	W 104 13 0.61
	4066.88	12.00	269.90	4037.00	-3.72	-0.55	-305.21	0.00	393321.18	577404.38	N 32 4 52.56	W 104 13 0.77
Drop to Vertical 2"/100' DLS	4100.00	12.00	269.90	4069.40	-3.81	-0.57	-312.10	0.00	393321.16	577397.49	N 32 4 52.56	W 104 13 0.85
	4200.00	12.00	269.90	4167.21	-4.06	-0.60	-332.89	0.00	393321.13	577376.70	N 32 4 52.56	W 104 13 1.09
	4300.00	12.00	269.90	4265.03	-4.31	-0.64	-353.68	0.00	393321.09	577355.91	N 32 4 52.56	W 104 13 1.34
	4400.00	12.00	269.90	4362.84	-4.57	-0.68	-374.47	0.00	393321.05	577335.12	N 32 4 52.56	W 104 13 1.58
	4500.00	12.00	269.90	4460.66	-4.82	-0.72	-395.26	0.00	393321.01	577314.33	N 32 4 52.56	W 104 13 1.82
	4600.00	12.00	269.90	4558.47	-5.08	-0.75	-416.05	0.00	393320.98	577293.55	N 32 4 52.56	W 104 13 2.06
	4700.00	12.00	269.90	4656.29	-5.33	-0.79	-436.84	0.00	393320.94	577272.76	N 32 4 52.56	W 104 13 2.30
	4800.00	12.00	269.90	4754.10	-5.58	-0.83	-457.63	0.00	393320.90	577251.97	N 32 4 52.56	W 104 13 2.54
	4900.00	12.00	269.90	4851.92	-5.84	-0.87	-478.43	0.00	393320.86	577231.18	N 32 4 52.56	W 104 13 2.79
	5000.00	12.00	269.90	4949.73	-6.09	-0.91	-499.22	0.00	393320.83	577210.39	N 32 4 52.56	W 104 13 3.03
Hold Vertical Top Bone Spring	5030.55	12.00	269.90	4979.62	-6.17	-0.92	-505.57	0.00	393320.81	577204.04	N 32 4 52.56	W 104 13 3.10
	5100.00	10.61	269.90	5047.72	-6.33	-0.94	-519.18	2.00	393320.79	577190.42	N 32 4 52.56	W 104 13 3.26
	5200.00	8.61	269.90	5146.31	-6.54	-0.97	-535.88	2.00	393320.76	577173.73	N 32 4 52.56	W 104 13 3.45
	5300.00	6.61	269.90	5245.42	-6.70	-1.00	-549.12	2.00	393320.73	577160.49	N 32 4 52.56	W 104 13 3.61
	5400.00	4.61	269.90	5344.94	-6.82	-1.01	-558.90	2.00	393320.72	577150.71	N 32 4 52.56	W 104 13 3.72
	5500.00	2.61	269.90	5444.73	-6.89	-1.02	-565.20	2.00	393320.71	577144.41	N 32 4 52.56	W 104 13 3.79
	5600.00	0.61	269.90	5544.69	-6.93	-1.03	-568.01	2.00	393320.70	577141.60	N 32 4 52.56	W 104 13 3.83
	5630.55	0.00	269.90	5575.24	-6.93	-1.03	-568.17	2.00	393320.70	577141.44	N 32 4 52.56	W 104 13 3.83
	5678.31	0.00	269.90	5623.00	-6.93	-1.03	-568.17	0.00	393320.70	577141.44	N 32 4 52.56	W 104 13 3.83
	5700.00	0.00	269.90	5644.69	-6.93	-1.03	-568.17	0.00	393320.70	577141.44	N 32 4 52.56	W 104 13 3.83
5800.00	0.00	269.90	5744.69	-6.93	-1.03	-568.17	0.00	393320.70	577141.44	N 32 4 52.56	W 104 13 3.83	
5900.00	0.00	269.90	5844.69	-6.93	-1.03	-568.17	0.00	393320.70	577141.44	N 32 4 52.56	W 104 13 3.83	
6000.00	0.00	269.90	5944.69	-6.93	-1.03	-568.17	0.00	393320.70	577141.44	N 32 4 52.56	W 104 13 3.83	
6100.00	0.00	269.90	6044.69	-6.93	-1.03	-568.17	0.00	393320.70	577141.44	N 32 4 52.56	W 104 13 3.83	

Comments	MD (ft)	Incl (°)	Azim Grid (°)	TVD (ft)	VSEC (ft)	NS (ft)	EW (ft)	DLS (°/100ft)	Northing (ftUS)	Easting (ftUS)	Latitude (N/S ° ' ")	Longitude (E/W ° ' ")
	6200.00	0.00	269.90	6144.69	-6.93	-1.03	-568.17	0.00	393320.70	577141.44	N 32 4 52.56 W 104 13 3.83	
	6300.00	0.00	269.90	6244.69	-6.93	-1.03	-568.17	0.00	393320.70	577141.44	N 32 4 52.56 W 104 13 3.83	
	6400.00	0.00	269.90	6344.69	-6.93	-1.03	-568.17	0.00	393320.70	577141.44	N 32 4 52.56 W 104 13 3.83	
	6500.00	0.00	269.90	6444.69	-6.93	-1.03	-568.17	0.00	393320.70	577141.44	N 32 4 52.56 W 104 13 3.83	
	6600.00	0.00	269.90	6544.69	-6.93	-1.03	-568.17	0.00	393320.70	577141.44	N 32 4 52.56 W 104 13 3.83	
Top 1st BSPG SS	6634.31	0.00	269.90	6579.00	-6.93	-1.03	-568.17	0.00	393320.70	577141.44	N 32 4 52.56 W 104 13 3.83	
	6700.00	0.00	269.90	6644.69	-6.93	-1.03	-568.17	0.00	393320.70	577141.44	N 32 4 52.56 W 104 13 3.83	
	6800.00	0.00	269.90	6744.69	-6.93	-1.03	-568.17	0.00	393320.70	577141.44	N 32 4 52.56 W 104 13 3.83	
Top 2nd BSPG Carb	6882.31	0.00	269.90	6827.00	-6.93	-1.03	-568.17	0.00	393320.70	577141.44	N 32 4 52.56 W 104 13 3.83	
	6900.00	0.00	269.90	6844.69	-6.93	-1.03	-568.17	0.00	393320.70	577141.44	N 32 4 52.56 W 104 13 3.83	
	7000.00	0.00	269.90	6944.69	-6.93	-1.03	-568.17	0.00	393320.70	577141.44	N 32 4 52.56 W 104 13 3.83	
	7100.00	0.00	269.90	7044.69	-6.93	-1.03	-568.17	0.00	393320.70	577141.44	N 32 4 52.56 W 104 13 3.83	
Top 2nd BSPG SS	7142.31	0.00	269.90	7087.00	-6.93	-1.03	-568.17	0.00	393320.70	577141.44	N 32 4 52.56 W 104 13 3.83	
	7200.00	0.00	269.90	7144.69	-6.93	-1.03	-568.17	0.00	393320.70	577141.44	N 32 4 52.56 W 104 13 3.83	
	7300.00	0.00	269.90	7244.69	-6.93	-1.03	-568.17	0.00	393320.70	577141.44	N 32 4 52.56 W 104 13 3.83	
	7400.00	0.00	269.90	7344.69	-6.93	-1.03	-568.17	0.00	393320.70	577141.44	N 32 4 52.56 W 104 13 3.83	
	7500.00	0.00	269.90	7444.69	-6.93	-1.03	-568.17	0.00	393320.70	577141.44	N 32 4 52.56 W 104 13 3.83	
	7600.00	0.00	269.90	7544.69	-6.93	-1.03	-568.17	0.00	393320.70	577141.44	N 32 4 52.56 W 104 13 3.83	
Top 3rd BSPG Carb	7604.31	0.00	269.90	7549.00	-6.93	-1.03	-568.17	0.00	393320.70	577141.44	N 32 4 52.56 W 104 13 3.83	
	7700.00	0.00	269.90	7644.69	-6.93	-1.03	-568.17	0.00	393320.70	577141.44	N 32 4 52.56 W 104 13 3.83	
	7800.00	0.00	269.90	7744.69	-6.93	-1.03	-568.17	0.00	393320.70	577141.44	N 32 4 52.56 W 104 13 3.83	
	7900.00	0.00	269.90	7844.69	-6.93	-1.03	-568.17	0.00	393320.70	577141.44	N 32 4 52.56 W 104 13 3.83	
Top Harkey SS	7920.31	0.00	269.90	7865.00	-6.93	-1.03	-568.17	0.00	393320.70	577141.44	N 32 4 52.56 W 104 13 3.83	
	8000.00	0.00	269.90	7944.69	-6.93	-1.03	-568.17	0.00	393320.70	577141.44	N 32 4 52.56 W 104 13 3.83	
	8100.00	0.00	269.90	8044.69	-6.93	-1.03	-568.17	0.00	393320.70	577141.44	N 32 4 52.56 W 104 13 3.83	
	8200.00	0.00	269.90	8144.69	-6.93	-1.03	-568.17	0.00	393320.70	577141.44	N 32 4 52.56 W 104 13 3.83	
	8300.00	0.00	269.90	8244.69	-6.93	-1.03	-568.17	0.00	393320.70	577141.44	N 32 4 52.56 W 104 13 3.83	
	8400.00	0.00	269.90	8344.69	-6.93	-1.03	-568.17	0.00	393320.70	577141.44	N 32 4 52.56 W 104 13 3.83	
Top 3rd BSPG SS	8460.31	0.00	269.90	8405.00	-6.93	-1.03	-568.17	0.00	393320.70	577141.44	N 32 4 52.56 W 104 13 3.83	
	8500.00	0.00	269.90	8444.69	-6.93	-1.03	-568.17	0.00	393320.70	577141.44	N 32 4 52.56 W 104 13 3.83	
	8600.00	0.00	269.90	8544.69	-6.93	-1.03	-568.17	0.00	393320.70	577141.44	N 32 4 52.56 W 104 13 3.83	
KOP - Build 12"/100' DLS	8628.32	0.00	269.90	8573.01	-6.93	-1.03	-568.17	0.00	393320.70	577141.44	N 32 4 52.56 W 104 13 3.83	
	8700.00	8.60	0.60	8644.42	-1.56	4.34	-568.12	12.00	393326.07	577141.50	N 32 4 52.61 W 104 13 3.83	
	8800.00	20.60	0.60	8741.01	23.60	29.50	-567.85	12.00	393351.23	577141.76	N 32 4 52.86 W 104 13 3.82	
Top Wolfcamp	8807.49	21.50	0.60	8748.00	26.29	32.19	-567.83	12.00	393353.92	577141.79	N 32 4 52.88 W 104 13 3.82	
	8900.00	32.60	0.60	8830.26	68.30	74.20	-567.39	12.00	393395.92	577142.22	N 32 4 53.30 W 104 13 3.82	
Wolfcamp A1 Shale	8914.07	34.29	0.60	8842.00	76.05	81.95	-567.31	12.00	393403.67	577142.30	N 32 4 53.38 W 104 13 3.82	
	9000.00	44.60	0.60	8908.27	130.57	136.47	-566.74	12.00	393458.18	577142.87	N 32 4 53.92 W 104 13 3.81	
	9100.00	56.60	0.60	8971.63	207.71	213.60	-565.94	12.00	393535.31	577143.67	N 32 4 54.68 W 104 13 3.80	
	9200.00	68.60	0.60	9017.56	296.33	302.21	-565.02	12.00	393623.91	577144.59	N 32 4 55.56 W 104 13 3.79	
Build 4"/100' DLS	9253.32	75.00	0.60	9034.21	346.96	352.84	-564.50	12.00	393674.54	577145.12	N 32 4 56.06 W 104 13 3.78	
	9300.00	76.87	0.60	9045.55	392.23	398.11	-564.03	4.00	393719.81	577145.59	N 32 4 56.51 W 104 13 3.78	
	9400.00	80.87	0.60	9064.86	490.33	496.20	-563.01	4.00	393817.89	577146.60	N 32 4 57.48 W 104 13 3.76	
	9500.00	84.87	0.60	9077.27	589.54	595.41	-561.98	4.00	393917.08	577147.63	N 32 4 58.46 W 104 13 3.75	
	9600.00	88.87	0.60	9082.73	689.37	695.23	-560.94	4.00	394016.90	577148.67	N 32 4 59.45 W 104 13 3.74	
Wolfcamp 'A1' Target Landing Point	9621.94	89.74	0.60	9083.00	711.30	717.16	-560.71	4.00	394038.83	577148.90	N 32 4 59.66 W 104 13 3.73	
	9700.00	89.74	0.60	9083.35	789.36	795.22	-559.90	0.00	394116.88	577149.71	N 32 5 0.43 W 104 13 3.72	
	9800.00	89.74	0.60	9083.79	889.36	895.22	-558.86	0.00	394216.86	577150.75	N 32 5 1.42 W 104 13 3.71	
	9900.00	89.74	0.60	9084.24	989.36	995.21	-557.82	0.00	394316.85	577151.79	N 32 5 2.41 W 104 13 3.70	
	10000.00	89.74	0.60	9084.69	1089.36	1095.20	-556.79	0.00	394416.83	577152.83	N 32 5 3.40 W 104 13 3.68	
	10100.00	89.74	0.60	9085.13	1189.36	1195.20	-555.75	0.00	394516.82	577153.86	N 32 5 4.39 W 104 13 3.67	
	10200.00	89.74	0.60	9085.58	1289.36	1295.19	-554.71	0.00	394616.80	577154.90	N 32 5 5.38 W 104 13 3.66	
	10300.00	89.74	0.60	9086.02	1389.36	1395.18	-553.67	0.00	394716.79	577155.94	N 32 5 6.37 W 104 13 3.64	
	10400.00	89.74	0.60	9086.47	1489.36	1495.18	-552.63	0.00	394816.77	577156.98	N 32 5 7.36 W 104 13 3.63	
	10500.00	89.74	0.60	9086.92	1589.36	1595.17	-551.59	0.00	394916.76	577158.02	N 32 5 8.35 W 104 13 3.62	
	10600.00	89.74	0.60	9087.36	1689.36	1695.16	-550.55	0.00	395016.74	577159.06	N 32 5 9.34 W 104 13 3.60	
	10700.00	89.74	0.60	9087.81	1789.35	1795.16	-549.51	0.00	395116.72	577160.10	N 32 5 10.33 W 104 13 3.59	
	10800.00	89.74	0.60	9088.25	1889.35	1895.15	-548.48	0.00	395216.71	577161.13	N 32 5 11.32 W 104 13 3.58	
	10900.00	89.74	0.60	9088.70	1989.35	1995.15	-547.44	0.00	395316.69	577162.17	N 32 5 12.31 W 104 13 3.56	
	11000.00	89.74	0.60	9089.15	2089.35	2095.14	-546.40	0.00	395416.68	577163.21	N 32 5 13.30 W 104 13 3.55	
	11100.00	89.74	0.60	9089.59	2189.35	2195.13	-545.36	0.00	395516.66	577164.25	N 32 5 14.29 W 104 13 3.54	
	11200.00	89.74	0.60	9090.04	2289.35	2295.13	-544.32	0.00	395616.65	577165.29	N 32 5 15.28 W 104 13 3.52	
	11300.00	89.74	0.60	9090.48	2389.35	2395.12	-543.28	0.00	395716.63	577166.33	N 32 5 16.27 W 104 13 3.51	
	11400.00	89.74	0.60	9090.93	2489.35	2495.11	-542.24	0.00	395816.62	577167.37	N 32 5 17.26 W 104 13 3.50	
	11500.00	89.74	0.60	9091.37	2589.35	2595.11	-541.21	0.00	395916.60	577168.40	N 32 5 18.25 W 104 13 3.48	
	11600.00	89.74	0.60	9091.82	2689.35	2695.10	-540.17	0.00	396016.58	577169.44	N 32 5 19.23 W 104 13 3.47	
	11700.00	89.74	0.60	9092.27	2789.34	2795.09	-539.13	0.00	396116.57	577170.48	N 32 5 20.22 W 104 13 3.46	
	11800.00	89.74	0.60	9092.71	2889.34	2895.09	-538.09	0.00	396216.55	577171.52	N 32 5 21.21 W 104 13 3.44	
	11900.00	89.74	0.60	9093.16	2989.34	2995.08	-537.05	0.00	396316.54	577172.56	N 32 5 22.20 W 104 13 3.43	
	12000.00	89.74	0.60	9093.60	3089.34	3095.08	-536.01	0.00	396416.52	577173.60	N 32 5 23.19 W 104 13 3.42	
	12100.00	89.74	0.60	9094.05	3189.34	3195.07	-534.97	0.00	396516.51	577174.64	N 32 5 24.18 W 104 13 3.40	
	12200.00	89.74	0.60	9094.50	3289.34	3295.06	-533.93	0.00	396616.49	577175.67	N 32 5 25.17 W 104 13 3.39	
	12300.00	89.74	0.60	9094.94	3389.34	3395.06	-532.90	0.00	396716.48	577176.71	N 32 5 26.16 W 104 13 3.38	
	12400.00	89.74	0.60	9095.39	3489.34	3495.05	-531.86	0.00	396816.46	577177.75	N 32 5 27.15 W 104 13 3.36	
	12500.00	89.74	0.60	9095.83	3589.34	3595.04	-530.82	0.00	396916.44	577178.79	N 32 5 28.14 W 104 13 3.35	
	12600.00	89.74	0.60	9096.28	3689.34	3695.04	-529.78	0.00	397016.43	577179.83	N 32 5 29.13 W 104 13 3.34	
	12700.00	89.74	0.60	9096.73	3789.33	3795.03	-528.74	0.00	397116.41	577180.87	N 32 5 30.12 W 104 13 3.32	
	12800.00	89.74	0.60	9097.17	3889.33	3895.02	-527.70	0.00	397216.40	577181.9		

Comments	MD (ft)	Incl (°)	Azim Grid (°)	TVD (ft)	VSEC (ft)	NS (ft)	EW (ft)	DLS (°/100ft)	Northing (ftUS)	Easting (ftUS)	Latitude (N/S ° ' ")	Longitude (E/W ° ' ")
	15000.00	89.74	0.60	9106.98	6089.31	6094.88	-504.85	0.00	399416.06	577204.75	N 32 5 52.88	W 104 13 3.02
	15100.00	89.74	0.60	9107.43	6189.31	6194.88	-503.81	0.00	399516.04	577205.79	N 32 5 53.87	W 104 13 3.00
	15200.00	89.74	0.60	9107.87	6289.31	6294.87	-502.77	0.00	399616.03	577206.83	N 32 5 54.86	W 104 13 2.99
	15300.00	89.74	0.60	9108.32	6389.31	6394.86	-501.74	0.00	399716.01	577207.87	N 32 5 55.84	W 104 13 2.98
	15400.00	89.74	0.60	9108.77	6489.31	6494.86	-500.70	0.00	399815.99	577208.91	N 32 5 56.83	W 104 13 2.96
	15500.00	89.74	0.60	9109.21	6589.31	6594.85	-499.66	0.00	399915.98	577209.95	N 32 5 57.82	W 104 13 2.95
	15600.00	89.74	0.60	9109.66	6689.31	6694.85	-498.62	0.00	400015.96	577210.99	N 32 5 58.81	W 104 13 2.94
	15700.00	89.74	0.60	9110.10	6789.30	6794.84	-497.58	0.00	400115.95	577212.02	N 32 5 59.80	W 104 13 2.92
	15800.00	89.74	0.60	9110.55	6889.30	6894.83	-496.54	0.00	400215.93	577213.06	N 32 6 0.79	W 104 13 2.91
	15900.00	89.74	0.60	9111.00	6989.30	6994.83	-495.50	0.00	400315.92	577214.10	N 32 6 1.78	W 104 13 2.90
	16000.00	89.74	0.60	9111.44	7089.30	7094.82	-494.46	0.00	400415.90	577215.14	N 32 6 2.77	W 104 13 2.88
	16100.00	89.74	0.60	9111.89	7189.30	7194.81	-493.43	0.00	400515.89	577216.18	N 32 6 3.76	W 104 13 2.87
	16200.00	89.74	0.60	9112.33	7289.30	7294.81	-492.39	0.00	400615.87	577217.22	N 32 6 4.75	W 104 13 2.86
	16300.00	89.74	0.60	9112.78	7389.30	7394.80	-491.35	0.00	400715.85	577218.26	N 32 6 5.74	W 104 13 2.84
	16400.00	89.74	0.60	9113.23	7489.30	7494.79	-490.31	0.00	400815.84	577219.29	N 32 6 6.73	W 104 13 2.83
	16500.00	89.74	0.60	9113.67	7589.30	7594.79	-489.27	0.00	400915.82	577220.33	N 32 6 7.72	W 104 13 2.82
	16600.00	89.74	0.60	9114.12	7689.30	7694.78	-488.23	0.00	401015.81	577221.37	N 32 6 8.71	W 104 13 2.80
	16700.00	89.74	0.60	9114.56	7789.29	7794.78	-487.19	0.00	401115.79	577222.41	N 32 6 9.70	W 104 13 2.79
	16800.00	89.74	0.60	9115.01	7889.29	7894.77	-486.16	0.00	401215.78	577223.45	N 32 6 10.69	W 104 13 2.78
	16900.00	89.74	0.60	9115.45	7989.29	7994.76	-485.12	0.00	401315.76	577224.49	N 32 6 11.68	W 104 13 2.76
	17000.00	89.74	0.60	9115.90	8089.29	8094.76	-484.08	0.00	401415.75	577225.53	N 32 6 12.67	W 104 13 2.75
	17100.00	89.74	0.60	9116.35	8189.29	8194.75	-483.04	0.00	401515.73	577226.56	N 32 6 13.65	W 104 13 2.74
	17200.00	89.74	0.60	9116.79	8289.29	8294.74	-482.00	0.00	401615.72	577227.60	N 32 6 14.64	W 104 13 2.72
	17300.00	89.74	0.60	9117.24	8389.29	8394.74	-480.96	0.00	401715.70	577228.64	N 32 6 15.63	W 104 13 2.71
	17400.00	89.74	0.60	9117.68	8489.29	8494.73	-479.92	0.00	401815.68	577229.68	N 32 6 16.62	W 104 13 2.70
	17500.00	89.74	0.60	9118.13	8589.29	8594.72	-478.88	0.00	401915.67	577230.72	N 32 6 17.61	W 104 13 2.68
	17600.00	89.74	0.60	9118.58	8689.29	8694.72	-477.85	0.00	402015.65	577231.76	N 32 6 18.60	W 104 13 2.67
	17700.00	89.74	0.60	9119.02	8789.28	8794.71	-476.81	0.00	402115.64	577232.80	N 32 6 19.59	W 104 13 2.66
	17800.00	89.74	0.60	9119.47	8889.28	8894.70	-475.77	0.00	402215.62	577233.83	N 32 6 20.58	W 104 13 2.64
	17900.00	89.74	0.60	9119.91	8989.28	8994.70	-474.73	0.00	402315.61	577234.87	N 32 6 21.57	W 104 13 2.63
	18000.00	89.74	0.60	9120.36	9089.28	9094.69	-473.69	0.00	402415.59	577235.91	N 32 6 22.56	W 104 13 2.62
	18100.00	89.74	0.60	9120.81	9189.28	9194.69	-472.65	0.00	402515.58	577236.95	N 32 6 23.55	W 104 13 2.60
	18200.00	89.74	0.60	9121.25	9289.28	9294.68	-471.61	0.00	402615.56	577237.99	N 32 6 24.54	W 104 13 2.59
	18300.00	89.74	0.60	9121.70	9389.28	9394.67	-470.58	0.00	402715.54	577239.03	N 32 6 25.53	W 104 13 2.58
	18400.00	89.74	0.60	9122.14	9489.28	9494.67	-469.54	0.00	402815.53	577240.07	N 32 6 26.52	W 104 13 2.56
	18500.00	89.74	0.60	9122.59	9589.28	9594.66	-468.50	0.00	402915.51	577241.10	N 32 6 27.51	W 104 13 2.55

Cimarex
Southern Hills
32-29 Fed Com
2H - PBHL
[100°FNL,990°FE
L]

Survey Type: Non-Def Plan

Survey Error Model: ISCWSA Rev 0 *** 3-D 95.000% Confidence 2.7955 sigma
Survey Program:

Description	Part	MD From (ft)	MD To (ft)	EOU Freq (ft)	Hole Size (in)	Casing Diameter (in)	Expected Max Inclination (deg)	Survey Tool Type	Borehole / Survey
	1	0.000	23.000	1/100.000	17.500	13.375		NAL_MWD_IFR1+MS-Depth Only	Southern Hills 32-29 Fed Com 2H / Cimarex Southern Hills 32-29 Fed Com 2H Rev0 RM 18Jan21
	1	23.000	18591.981	1/100.000	17.500	13.375		NAL_MWD_IFR1+MS	Southern Hills 32-29 Fed Com 2H / Cimarex Southern Hills 32-29



**Cimarex Southern Hills 32-29 Fed Com 2H Rev0 RM 18Jan21 Proposal
Geodetic Report
(Non-Def Plan)**



Report Date: January 19, 2021 - 08:55 AM
Client: Cimarex Energy
Field: NM Eddy County (NAD 83)
Structure / Slot: Cimarex Southern Hills 32-29 Fed Com 2H / New Slot
Well: Southern Hills 32-29 Fed Com 2H
Borehole: Southern Hills 32-29 Fed Com 2H
UWI / AP#: Unknown / Unknown
Survey Name: Cimarex Southern Hills 32-29 Fed Com 2H Rev0 RM 18Jan21
Survey Date: January 18, 2021
Tort / AHD / DDI / ERD Ratio: 113.745 ° / 10256.361 ft / 6.376 / 1.124
Coordinate Reference System: NAD83 New Mexico State Plane, Eastern Zone, US Feet
Location Lat / Long: N 32° 4' 52.55993", W 104° 12' 57.22533"
Location Grid N/E Y/X: N 393321.730 ftUS, E 577709.560 ftUS
CRS Grid Convergence Angle: 0.0624 °
Grid Scale Factor: 0.99991061
Version / Patch: 2.10.824.0

Survey / DLS Computation: Minimum Curvature / Lubinski
Vertical Section Azimuth: 0.595 ° (Grid North)
Vertical Section Origin: 0.000 ft, 0.000 ft
TVD Reference Datum: RKB
TVD Reference Elevation: 3267.200 ft above MSL
Seabed / Ground Elevation: 3244.200 ft above MSL
Magnetic Declination: 7.056 °
Total Gravity Field Strength: 998.4345mgn (9.80665 Based)
Gravity Model: GARM
Total Magnetic Field Strength: 47619.245 nT
Magnetic Dip Angle: 59.668 °
Declination Date: January 18, 2021
Magnetic Declination Model: HDGM 2020
North Reference: Grid North
Grid Convergence Used: 0.0624 °
Total Corr Mag North→Grid North: 6.9939 °
Local Coord Referenced To: Well Head

Comments	MD (ft)	Incl (°)	Azim Grid (°)	TVD (ft)	VSEC (ft)	NS (ft)	EW (ft)	DLS (°/100ft)	Northing (ftUS)	Easting (ftUS)	Latitude (N/S ° ' ")	Longitude (E/W ° ' ")
SHL [820' FSL, 1558' FWL] Nudge 2"/100' DLS	0.00	0.00	269.90	0.00	0.00	0.00	0.00	N/A	393321.73	577709.56	N 32 4 52.56	W 104 12 57.23
Hold Nudge Drop to Vertical 2"/100' DLS	2300.00	0.00	269.90	2300.00	0.00	0.00	0.00	0.00	393321.73	577709.56	N 32 4 52.56	W 104 12 57.23
Hold Nudge Drop to Vertical 2"/100' DLS	2900.00	12.00	269.90	2895.62	-0.76	-0.11	-62.60	2.00	393321.62	577646.96	N 32 4 52.56	W 104 12 57.95
Hold Vertical KOP - Build 12"/100' DLS	5030.55	12.00	269.90	4979.62	-6.17	-0.92	-505.57	0.00	393320.81	577204.04	N 32 4 52.56	W 104 13 3.10
Build 4"/100' DLS	5630.55	0.00	269.90	5575.24	-6.93	-1.03	-568.17	2.00	393320.70	577141.44	N 32 4 52.56	W 104 13 3.83
Build 4"/100' DLS	8628.32	0.00	269.90	8573.01	-6.93	-1.03	-568.17	0.00	393320.70	577141.44	N 32 4 52.56	W 104 13 3.83
Landing Point Cimarex Southern Hills 32-29 Fed Com 2H - PBHL [100'FNL,990'FE L]	9253.32	75.00	0.60	9034.21	346.96	352.84	-564.50	12.00	393674.54	577145.12	N 32 4 56.06	W 104 13 3.78
	9621.94	89.74	0.60	9083.00	711.30	717.16	-560.71	4.00	394038.83	577148.90	N 32 4 59.66	W 104 13 3.73
	18591.98	89.74	0.60	9123.00	9681.26	9686.64	-467.54	0.00	403007.48	577242.06	N 32 6 28.42	W 104 13 2.54

Survey Type: Non-Def Plan

Survey Error Model: ISCWSA Rev 0 *** 3-D 95.000% Confidence 2.7955 sigma
Survey Program:

Description	Part	MD From (ft)	MD To (ft)	EOU Freq (ft)	Hole Size (in)	Casing Diameter (in)	Expected Max Inclination (deg)	Survey Tool Type	Borehole / Survey
	1	0.000	23.000	1/100.000	17.500	13.375		NAL_MWD_IFR1+MS-Depth Only	Southern Hills 32-29 Fed Com 2H / Cimarex Southern Hills 32-29 Fed Com 2H Rev0 RM 18Jan21
	1	23.000	18591.981	1/100.000	17.500	13.375		NAL_MWD_IFR1+MS	Southern Hills 32-29 Fed Com 2H / Cimarex Southern Hills 32-29



Cimarex Energy

Rev 0

[illegible]



Cimarex Southern Hills 32-29 Fed Com 2H Rev0 RM 18Jan21 Anti-Collision Summary Report

Analysis Date-24hr Time: January 19, 2021 - 08:56

Client: Cimarex Energy

Field: NM Eddy County (NAD 83)

Structure: Cimarex Southern Hills 32-29 Fed Com 2H

Slot: New Slot

Well: Southern Hills 32-29 Fed Com 2H

Borehole: Southern Hills 32-29 Fed Com 2H

Scan MD Range: 0.00ft ~ 18591.98ft

Analysis Method: 3D Least Distance

Reference Trajectory: Cimarex Southern Hills 32-29 Fed Com 2H Rev0 RM 18Jan21 (Non-Def Plan)

Depth Interval: Every 10.00 Measured Depth (ft)

Rule Set: NAL Procedure: D&M AntiCollision Standard S002

Min Pts: All local minima indicated.

Version / Patch: 2.10.824.0

Database \ Project: US1455VSM3115\DRILLING-NM Eddy County 2.10

Trajectory Error Model: ISCWSA0 3-D 95,000% Confidence 2,7955 sigma, for subject well. For offset wells, error model version is specified with each well respectively.

Offset Trajectories Summary

Offset Selection Criteria

Wellhead distance scan: Not performed!

Selection filters: Definitive Surveys - Definitive Plans - Definitive surveys exclude definitive plans

- All Non-Def Surveys when no Def-Survey is set in a borehole - All Non-Def Plans when no Def-Plan is set in a borehole

Offset Trajectory	Separation			Allow Dev. (ft)	Sep. Fact.	Controlling Rule	Reference Trajectory		Risk Level			Alert	Status
	Ct-Ct (ft)	MAS (ft)	EOU (ft)				MD (ft)	TVD (ft)	Alert	Minor	Major		

Results highlighted: Sep-Factor separation <= 1.50 ft

Cimarex Southern Hills 32-29
Fed Com 3H Rev0 RM 18Jan21
(Non-Def Plan)

Fall Minor

20.00	16.26	18.72	3.74	N/A	MAS = 4.96 (m)	0.00	0.00	CtCt<=15m<15.00				Enter Alert	
20.00	16.26	18.72	3.74	28079.77	MAS = 4.96 (m)	23.00	23.00					WRP	
20.00	20.03	6.22	-0.03	1.50	OSF1.50	2050.00	2050.00		OSF<1.50			Enter Minor	
20.00	22.39	4.65	-2.39	1.33	OSF1.50	2300.00	2300.00					MinPt-CtCt	
20.02	22.46	4.62	-2.44	1.33	OSF1.50	2310.00	2310.00					MINPT-O-EOU	
20.07	22.53	4.62	-2.46	1.33	OSF1.50	2320.00	2320.00					MinPts	
23.24	23.30	7.28	-0.06	1.50	OSF1.50	2440.00	2439.94			OSF>1.50		Exit Minor	
81.65	25.92	63.95	55.74	4.89	OSF1.50	2900.00	2895.62		OSF>5.00			Exit Alert	
587.00	70.17	539.79	516.83	12.75	OSF1.50	8620.00	8564.69					MinPts	
588.65	70.55	541.19	518.10	12.72	OSF1.50	8690.00	8634.52					MinPt-O-SF	
659.95	199.14	526.75	460.80	4.99	OSF1.50	14240.00	9103.59		OSF<5.00			Enter Alert	
659.89	334.82	436.25	325.07	2.96	OSF1.50	18591.98	9123.00					MinPts	

Cimarex Southern Hills 32-29
Fed Com 1H Rev0 RM 18Jan21
(Non-Def Plan)

Warning Alert

20.01	16.25	18.72	3.76	N/A	MAS = 4.95 (m)	0.00	0.00	CtCt<=15m<15.00				Enter Alert	
19.99	16.25	18.71	3.74	N/A	MAS = 4.95 (m)	23.00	23.00					WRP	
19.99	16.25	9.67	3.74	2.07	MAS = 4.95 (m)	1500.00	1500.00					MinPts	
20.05	16.25	9.63	3.80	2.05	MAS = 4.95 (m)	1520.00	1520.00					MINPT-O-EOU	
20.13	16.25	9.67	3.88	2.05	MAS = 4.95 (m)	1530.00	1530.00					MinPt-O-SF	
53.97	17.41	41.94	36.57	4.90	OSF1.50	1950.00	1950.00		OSF>5.00			Exit Alert	
221.14	22.04	206.01	199.09	15.89	OSF1.50	2900.00	2895.62					MinPt-O-SF	
334.29	40.91	306.59	293.39	12.61	OSF1.50	5060.00	5008.45					MinPt-O-SF	
659.94	199.11	526.77	460.83	4.99	OSF1.50	14500.00	9104.75		OSF<5.00			Enter Alert	
659.89	327.85	440.89	332.04	3.03	OSF1.50	18580.00	9122.95					MinPt-CtCt	
659.93	328.38	440.58	331.55	3.02	OSF1.50	18591.98	9123.00					MinPts	

Cimarex Southern Hills 32-29
Fed Com 4H Rev0 RM 18Jan21
(Non-Def Plan)

Warning Alert

40.00	32.25	38.71	7.74	N/A	MAS = 9.83 (m)	0.00	0.00	CtCt<=15m<15.00				Enter Alert	
40.00	32.25	38.71	7.74	34845.31	MAS = 9.83 (m)	23.00	23.00					WRP	
40.00	32.25	25.96	7.74	3.04	MAS = 9.83 (m)	2090.00	2090.00					MinPts	
40.01	32.25	25.87	7.76	3.01	MAS = 9.83 (m)	2110.00	2110.00					MINPT-O-EOU	
40.26	32.25	25.98	8.01	3.00	MAS = 9.83 (m)	2140.00	2140.00					MinPt-O-SF	
69.33	32.25	54.26	37.08	4.94	MAS = 9.83 (m)	2480.00	2479.88		OSF>5.00			Exit Alert	
205.41	32.25	189.95	173.16	14.41	MAS = 9.83 (m)	2900.00	2895.62					MinPts	
1319.78	329.29	1099.82	990.49	6.03	OSF1.50	18591.98	9123.00					MinPts	

30-015-39967 Cimarex Energy
Cottonwood Hills 32 State Com
#001 Gyro-MWD Off to 13586ft
MD - A (Def Survey)

Pass

884.06	32.81	882.08	851.25	N/A	MAS = 10.00 (m)	0.00	0.00					Surface	
884.02	32.81	882.03	851.22	62520.50	MAS = 10.00 (m)	23.00	23.00					WRP	
879.67	32.81	874.81	846.86	304.80	MAS = 10.00 (m)	640.00	640.00					MinPts	
879.80	32.81	874.71	846.99	282.53	MAS = 10.00 (m)	700.00	700.00					MINPT-O-EOU	
365.67	32.81	344.02	332.86	18.80	MAS = 10.00 (m)	5290.00	5235.49					MinPt-O-SF	
355.37	32.81	334.89	322.56	19.45	MAS = 10.00 (m)	5600.00	5544.69					MINPT-O-EOU	
355.32	32.81	334.92	322.52	19.52	MAS = 10.00 (m)	5620.00	5564.69					MinPts	
355.57	32.81	335.03	322.76	19.39	MAS = 10.00 (m)	5790.00	5734.69					MINPT-O-EOU	
382.10	36.23	357.17	345.67	16.80	OSF1.50	7550.00	7494.69					MinPt-CtCt	
382.18	36.48	357.09	345.70	16.67	OSF1.50	7600.00	7544.69					MINPT-O-EOU	
382.80	37.17	357.26	345.64	16.37	OSF1.50	7730.00	7674.69					MinPt-O-ADP	
390.18	40.38	362.49	349.79	15.27	OSF1.50	8320.00	8264.69					MinPt-O-ADP	
392.08	42.17	363.21	349.91	14.66	OSF1.50	8628.32	8573.01					MinPt-O-SF	
393.09	42.35	364.10	350.74	14.63	OSF1.50	8660.00	8604.67					MinPt-CtCt	
726.80	37.73	700.99	689.07	30.41	OSF1.50	9580.00	9082.20					MINPT-O-EOU	
727.15	38.80	700.62	688.35	29.54	OSF1.50	9620.00	9082.99					MinPt-CtCt	
707.87	70.66	660.11	637.21	15.42	OSF1.50	10730.00	9087.94					MINPT-O-EOU	
708.50	74.73	658.02	633.77	14.57	OSF1.50	10850.00	9088.48					MinPt-CtCt	
708.93	83.19	652.81	625.74	13.06	OSF1.50	11080.00	9089.50					MinPt-CtCt	
709.45	85.34	651.90	624.11	12.73	OSF1.50	11140.00	9089.77					MINPT-O-EOU	
710.34	86.40	652.08	623.94	12.59	OSF1.50	11170.00	9089.90					MinPt-O-ADP	
717.96	98.45	651.67	619.51	11.13	OSF1.50	11480.00	9091.29					MINPT-O-EOU	
713.46	110.73	638.98	602.73	9.81	OSF1.50	11820.00	9092.80					MinPt-CtCt	
714.10	113.12	638.02	600.98	9.61	OSF1.50	11890.00	9093.11					MINPT-O-EOU	
714.93	114.11	638.20	600.83	9.54	OSF1.50	11920.00	9093.25					MinPt-O-SF	
693.79	131.00	605.80	562.79	8.04	OSF1.50	12500.00	9095.83					MinPt-CtCt	
694.23	132.21	605.44	562.03	7.97	OSF1.50	12540.00	9096.01					MINPT-O-EOU	
694.49	132.50	605.50	561.99	7.96	OSF1.50	12550.00	9096.06					MinPt-O-ADP	

Offset Trajectory	Separation			Allow Dev. (ft)	Sep. Fact.	Controlling Rule	Reference Trajectory		Risk Level			Alert	Status
	Cl-Cl (ft)	MAS (ft)	EOU (ft)				MD (ft)	TVD (ft)	Alert	Minor	Major		
	702.86	136.60	611.13	566.26	7.31	OSF1.50	12700.00	9096.73				MinPt-O-SF	
	5998.07	65.11	5954.00	5932.96	142.46	OSF1.50	18591.98	9123.00				TD	

Cimarex Cottonwood Hills 32
State Com #2H Gyro-MWD Off
to 12082ft MD (Def Survey)

Pass

1323.54	32.81	1321.56	1290.73	N/A	MAS = 10.00 (m)	0.00	0.00					Surface	
1323.53	32.81	1321.54	1290.72	107152.80	MAS = 10.00 (m)	23.00	23.00					WRP	
1322.77	32.81	1319.61	1289.96	1118.43	MAS = 10.00 (m)	270.00	270.00					MinPts	
1322.93	32.81	1319.52	1290.12	921.77	MAS = 10.00 (m)	360.00	360.00					MINPT-O-EOU	
1323.03	32.81	1319.51	1290.22	861.28	MAS = 10.00 (m)	390.00	390.00					MINPT-O-EOU	
1325.03	32.81	1318.97	1292.22	324.18	MAS = 10.00 (m)	950.00	950.00					MINPT-O-EOU	
906.97	32.81	887.14	874.17	51.74	MAS = 10.00 (m)	5180.00	5126.54					MinPt-O-SF	
889.81	32.81	870.69	857.00	52.97	MAS = 10.00 (m)	5540.00	5484.70					MINPT-O-EOU	
889.79	32.81	870.70	856.98	53.04	MAS = 10.00 (m)	5550.00	5484.70					MinPts	
593.76	51.75	558.41	542.01	18.03	OSF1.50	7550.00	7494.69					MinPts	
593.81	51.80	558.42	542.00	18.01	OSF1.50	7560.00	7504.69					MinPt-O-ADP	
594.41	51.88	558.97	542.53	18.00	OSF1.50	7580.00	7524.69					MinPt-O-SF	
1695.32	50.34	1661.11	1644.39	52.53	OSF1.50	9680.00	9083.26					MinPt-O-ADP	
1671.62	68.49	1611.97	1583.14	28.95	OSF1.50	10880.00	9088.61					MinPt-CiCi	
1667.66	124.61	1583.93	1543.05	20.37	OSF1.50	11980.00	9093.52					MinPt-CiCi	
1659.15	150.87	1557.90	1508.27	16.69	OSF1.50	12790.00	9097.13					MinPt-CiCi	
1662.33	163.92	1552.40	1498.42	15.38	OSF1.50	13080.00	9098.42					MinPts	
1662.57	163.95	1552.61	1498.62	15.38	OSF1.50	13090.00	9098.47					MinPt-O-SF	
5790.22	79.56	5736.53	5710.67	111.92	OSF1.50	18591.98	9123.00					TD	

Cimarex Cottonwood Hills 32
State #3H MWD Off to 11920ft
(Def Survey)

Pass

640.10	32.81	638.12	607.29	N/A	MAS = 10.00 (m)	0.00	0.00					Surface	
639.87	32.81	637.85	607.06	20273.52	MAS = 10.00 (m)	10.00	10.00					MinPt-O-SF	
639.78	32.81	637.80	606.97	306881.83	MAS = 10.00 (m)	23.00	23.00					WRP	
614.86	32.81	606.97	582.05	103.78	MAS = 10.00 (m)	1330.00	1330.00					MinPts	
614.91	32.81	606.92	582.10	102.05	MAS = 10.00 (m)	1360.00	1360.00					MINPT-O-EOU	
632.90	32.81	620.62	600.09	61.22	MAS = 10.00 (m)	2400.00	2399.98					MinPt-O-SF	
678.39	32.81	665.71	645.58	63.24	MAS = 10.00 (m)	2900.00	2895.62					MinPts	
705.80	32.81	692.78	672.99	63.73	MAS = 10.00 (m)	3080.00	3071.69					MinPt-O-SF	
719.13	32.81	705.89	686.32	63.89	MAS = 10.00 (m)	3170.00	3159.72					MinPt-O-SF	
926.49	32.81	908.77	893.68	58.75	MAS = 10.00 (m)	4470.00	4431.31					MinPt-O-SF	
1036.41	32.81	1016.81	1003.60	58.69	MAS = 10.00 (m)	5030.55	4979.62					MinPt-O-SF	
1125.96	32.81	1104.75	1093.15	58.46	MAS = 10.00 (m)	6600.00	6544.69					MINPT-O-EOU	
1129.27	32.81	1107.06	1096.47	55.72	MAS = 10.00 (m)	6880.00	6824.69					MinPt-O-SF	
972.06	42.67	942.95	929.39	35.76	OSF1.50	7540.00	7484.69					MinPt-CiCi	
972.08	42.76	942.91	929.32	35.68	OSF1.50	7550.00	7494.69					MinPts	
976.62	43.31	947.09	933.32	35.37	OSF1.50	7640.00	7584.69					MinPt-O-SF	
1620.72	36.07	1596.01	1584.65	71.22	OSF1.50	8860.00	8795.70					MinPt-O-SF	
1857.38	49.25	1823.89	1808.13	58.87	OSF1.50	9640.00	9083.08					MinPt-O-ADP	
1858.13	77.52	1805.79	1780.61	36.86	OSF1.50	10420.00	9086.56					MinPt-CiCi	
1855.53	86.94	1797.20	1768.88	32.73	OSF1.50	10680.00	9087.72					MinPt-CiCi	
1855.96	87.36	1797.06	1768.60	32.57	OSF1.50	10710.00	9087.85					MINPT-O-EOU	
1856.08	87.50	1797.08	1768.57	32.52	OSF1.50	10720.00	9087.90					MinPt-O-ADP	
1856.74	98.63	1790.33	1758.11	28.78	OSF1.50	11000.00	9089.15					MinPt-CiCi	
1840.08	115.07	1762.70	1725.01	24.38	OSF1.50	11450.00	9091.15					MinPt-CiCi	
1840.40	116.06	1762.37	1724.35	24.17	OSF1.50	11500.00	9091.37					MINPT-O-EOU	
1839.68	121.85	1757.77	1717.81	23.00	OSF1.50	11640.00	9092.00					MinPt-CiCi	
1840.12	123.11	1757.39	1717.01	22.76	OSF1.50	11700.00	9092.27					MINPT-O-EOU	
1841.13	124.31	1757.59	1716.81	22.55	OSF1.50	11750.00	9092.49					MinPt-O-ADP	
1848.23	130.62	1760.49	1717.62	21.53	OSF1.50	11940.00	9093.34					MinPt-O-ADP	
1864.48	141.27	1769.64	1723.21	20.06	OSF1.50	12210.00	9094.54					MINPT-O-EOU	
1864.82	141.77	1769.65	1723.05	19.99	OSF1.50	12220.00	9094.59					MinPt-O-ADP	
1879.56	150.10	1773.63	1729.46	19.01	OSF1.50	12430.00	9095.52					MINPT-O-EOU	
1882.72	200.87	1748.15	1681.85	14.18	OSF1.50	13050.00	9098.29					MinPts	
1882.73	200.89	1748.15	1681.85	14.18	OSF1.50	13060.00	9098.33					MinPt-O-ADP	
1882.80	200.90	1748.21	1681.90	14.18	OSF1.50	13070.00	9098.38					MinPt-O-SF	
5850.63	86.24	5792.47	5764.39	104.12	OSF1.50	18591.98	9123.00					TD	

COG Populus Federal 3H
#1 (Offset) AP# 30-015-43256
Gyro Off-8600ft (Def Survey)

Pass

9892.86	32.81	9891.58	9860.05	N/A	MAS = 10.00 (m)	0.00	0.00					Surface	
9892.62	32.81	9891.29	9859.81	235567.47	MAS = 10.00 (m)	23.00	23.00					MinPt-O-SF	
9890.83	32.81	9887.77	9858.02	5566.46	MAS = 10.00 (m)	420.00	420.00					MINPT-O-EOU	
9877.20	32.81	9864.85	9844.39	872.49	MAS = 10.00 (m)	2490.00	2489.86					MinPts	
9877.20	32.81	9864.85	9844.40	871.54	MAS = 10.00 (m)	2510.00	2509.81					MINPT-O-EOU	
9879.73	32.81	9866.97	9846.92	841.33	MAS = 10.00 (m)	2900.00	2895.62					MINPT-O-EOU	
9891.86	32.81	9875.29	9859.05	636.10	MAS = 10.00 (m)	4110.00	4079.18					MINPT-O-EOU	
9900.28	32.81	9879.30	9867.47	495.09	MAS = 10.00 (m)	5030.55	4979.62					MINPT-O-EOU	
9900.48	32.81	9879.30	9867.67	490.84	MAS = 10.00 (m)	5100.00	5047.72					MinPts	
9900.26	32.81	9878.95	9867.45	488.36	MAS = 10.00 (m)	5220.00	5166.09					MinPt-O-SF	
9891.15	32.85	9868.91	9858.30	466.07	OSF1.50	6130.00	6074.69					MinPt-CiCi	
9891.22	33.08	9868.83	9858.14	462.79	OSF1.50	6190.00	6134.69					MINPT-O-EOU	
9891.49	33.40	9868.88	9858.09	458.24	OSF1.50	6290.00	6234.69					MinPt-O-ADP	
9891.59	33.50	9868.92	9858.09	456.78	OSF1.50	6320.00	6264.69					MinPt-O-ADP	
9895.68	34.98	9872.01	9860.69	436.99	OSF1.50	6700.00	6644.69					MinPt-O-SF	
9896.13	35.37	9872.21	9860.76	432.06	OSF1.50	6810.00	6754.69					MinPt-O-ADP	
9906.06	38.43	9880.10	9867.63	397.19	OSF1.50	7500.00	7444.69					MinPt-O-SF	
9904.70	39.23	9878.21	9865.47	388.82	OSF1.50	7710.00	7654.69					MinPt-CiCi	
9904.78	39.40	9878.11	9865.28	386.14	OSF1.50	7760.00	7704.69					MINPT-O-EOU	
9904.91	39.65	9878.14	9865.26	384.55	OSF1.50	7790.00	7734.69					MinPt-O-ADP	
9914.14	42.11	9885.72	9872.02	361.87	OSF1.50	8320.00	8264.69					MinPt-O-SF	
1031.13	226.72	879.64	864.41	6.85	OSF1.50	18591.98	9123.00					MinPts	

EOG Tamboi BGO State Com
#1 (Offset) AP# 30-015-34016
P&A Blind Off-125ft (Def
Survey)

Pass

1242.31	32.81	1241.02	1209.50	N/A	MAS = 10.00 (m)	0.00	0.00					Surface	
1241.72	32.81	1240.36	1208.91	16796.46	MAS = 10.00 (m)	23.00	23.00					MinPt-O-SF	
1241.56	32.81	1228.03	1208.75	101.29	MAS = 10.00 (m)	160.00	160.00					MinPts	
1241.56	32.81	1227.17	1208.75	94.64	MAS = 10.00 (m)	170.00	170.00					MINPT-O-EOU	
1241.61	32.81	1227.22	1208.81	94.64	MAS = 10.00 (m)	180.00	180.00					MinPt-O-SF	
8972.50	32.81	8952.03	8939.69	467.68	MAS = 10.00 (m)	10040.00	9084.86					MinPts	
8973.11	32.81	8951.55	8940.30	442.39	MAS = 10.00 (m)	10140.00	9085.31					MINPT-O-EOU	
11957.82	141.51	11863.06	11816.32	127.90	OSF1.50	17940.00	9120.09					MinPt-O-SF	

Offset Trajectory	Separation			Allow Dev. (ft)	Sep. Fac.	Controlling Rule	Reference Trajectory		Risk Level			Alert	Status
	Cl-Cl (ft)	MAS (ft)	EOU (ft)				MD (ft)	TVD (ft)	Alert	Minor	Major		
	12396.47	146.28	12300.52	12252.18	128.25	OSF1.50	18591.98	9123.00				TD	
COG Populus Federal 4H (Offset) AP# 30-015-44103 Gyro-MWD Off-12105ft (Def Survey)													Pass
	8900.63	93.01	8838.30	8807.62	145.07	OSF1.50	0.00	0.00				Surface	
	8881.21	93.14	8818.79	8788.07	144.54	OSF1.50	23.00	23.00				WRP	
	6630.80	83.57	6574.76	6547.23	120.42	OSF1.50	2900.00	2895.62				MinPt-O-SF	
	6347.97	80.28	6294.11	6267.68	120.06	OSF1.50	3310.00	3296.66				MinPt-O-SF	
	4698.70	48.87	4664.11	4649.83	164.32	OSF1.50	7570.00	7514.69				MinPt-CICI	
	4698.70	48.89	4664.09	4649.81	164.22	OSF1.50	7580.00	7524.69				MinPts	
	1615.56	155.35	1511.67	1460.21	15.69	OSF1.50	13580.00	9100.65				MinPt-CICI	
	1615.57	155.45	1511.60	1460.11	15.68	OSF1.50	13590.00	9100.69				MinPts	
	1615.08	155.04	1511.39	1460.04	15.72	OSF1.50	13840.00	9101.81				MinPt-O-SF	
	1611.60	155.60	1507.54	1456.00	15.63	OSF1.50	14190.00	9103.37				MinPt-CICI	
	1611.65	155.73	1507.50	1455.91	15.61	OSF1.50	14220.00	9103.50				MINPT-O-EOU	
	1611.69	155.78	1507.51	1455.91	15.61	OSF1.50	14230.00	9103.55				MinPt-O-SF	
	1611.79	156.87	1506.88	1454.92	15.50	OSF1.50	14510.00	9104.80				MinPt-CICI	
	1612.11	157.88	1506.53	1454.23	15.40	OSF1.50	14680.00	9105.56				MINPT-O-EOU	
	1612.57	158.42	1506.63	1454.13	15.36	OSF1.50	14760.00	9105.91				MinPt-O-SF	
	1625.97	178.93	1506.36	1447.04	13.70	OSF1.50	16640.00	9114.30				MinPt-CICI	
	1625.72	183.02	1503.38	1442.71	13.39	OSF1.50	16890.00	9115.41				MinPt-CICI	
	1626.20	185.98	1501.88	1440.22	13.18	OSF1.50	17060.00	9116.17				MinPt-CICI	
	1626.54	186.98	1501.56	1439.56	13.11	OSF1.50	17120.00	9116.44				MINPT-O-EOU	
	1626.96	187.48	1501.65	1439.48	13.08	OSF1.50	17150.00	9116.57				MinPt-O-SF	
	1629.43	189.89	1502.51	1439.54	12.93	OSF1.50	17280.00	9117.15				MinPt-O-SF	
	1651.09	202.97	1515.45	1448.12	12.25	OSF1.50	17940.00	9120.09				MinPt-O-SF	
	1660.05	206.80	1521.86	1453.25	12.09	OSF1.50	18180.00	9121.16				MinPt-O-SF	
	1729.53	206.69	1591.41	1522.84	12.60	OSF1.50	18591.98	9123.00				TD	
Cimarex Cottonwood Hills 32 State #4H ST01 MWD Tie-in to 11861ft (Def Survey)													Pass
	1825.47	32.81	1823.49	1792.66	N/A	MAS = 10.00 (m)	0.00	0.00				Surface	
	1825.22	32.81	1823.21	1792.41	63963.49	MAS = 10.00 (m)	20.00	20.00				MinPt-O-SF	
	1825.20	32.81	1823.20	1792.39	71865.33	MAS = 10.00 (m)	23.00	23.00				WRP	
	1785.24	32.81	1773.09	1752.43	175.51	MAS = 10.00 (m)	2300.00	2300.00				MinPts	
	1785.25	32.81	1773.07	1752.44	175.11	MAS = 10.00 (m)	2310.00	2310.00				MINPT-O-EOU	
	1790.03	32.81	1777.63	1757.22	171.65	MAS = 10.00 (m)	2470.00	2469.90				MinPt-O-SF	
	1795.72	32.81	1783.29	1762.91	171.58	MAS = 10.00 (m)	2550.00	2549.68				MinPt-O-SF	
	1844.92	32.81	1832.14	1812.12	170.63	MAS = 10.00 (m)	2900.00	2895.62				MINPT-O-EOU	
	2253.93	32.81	2234.67	2221.12	130.33	MAS = 10.00 (m)	5030.55	4979.62				MinPt-O-SF	
	2244.72	33.71	2221.58	2211.01	105.00	OSF1.50	7200.00	7144.69				MinPt-CICI	
	2244.73	33.76	2221.56	2210.97	105.84	OSF1.50	7210.00	7154.69				MINPT-O-EOU	
	2244.78	33.81	2221.57	2210.96	105.67	OSF1.50	7220.00	7164.69				MinPt-O-SF	
	2420.02	40.83	2392.14	2379.19	93.36	OSF1.50	8320.00	8264.69				MinPt-O-SF	
	2649.92	43.27	2620.42	2606.66	96.20	OSF1.50	8890.00	8821.78				MinPt-O-SF	
	2813.27	58.00	2773.94	2755.27	75.27	OSF1.50	9510.00	9078.13				MinPts	
	2820.71	64.54	2777.02	2756.17	67.59	OSF1.50	9650.00	9083.13				MINPT-O-EOU	
	2822.67	66.71	2777.54	2755.56	65.36	OSF1.50	9720.00	9083.44				MinPt-O-SF	
	2831.57	76.87	2779.67	2754.70	56.68	OSF1.50	9960.00	9084.51				MINPT-O-EOU	
	2835.39	98.88	2768.81	2736.51	43.86	OSF1.50	10370.00	9086.34				MinPt-CICI	
	2826.91	131.04	2738.90	2695.88	32.83	OSF1.50	11070.00	9089.46				MinPt-CICI	
	2828.60	135.97	2737.30	2692.63	31.64	OSF1.50	11230.00	9090.17				MINPT-O-EOU	
	2828.40	153.76	2725.23	2674.64	27.93	OSF1.50	11570.00	9091.69				MinPt-CICI	
	2829.41	157.94	2723.45	2671.46	27.19	OSF1.50	11700.00	9092.27				MINPT-O-EOU	
	2829.77	158.36	2723.54	2671.41	27.12	OSF1.50	11720.00	9092.36				MinPt-O-SF	
	2837.13	175.10	2719.73	2662.03	24.56	OSF1.50	12020.00	9093.69				MinPt-CICI	
	2827.51	204.71	2690.38	2622.80	20.91	OSF1.50	12630.00	9096.41				MinPt-CICI	
	2834.24	226.34	2682.69	2607.90	18.94	OSF1.50	13120.00	9098.80				MinPts	
	2836.78	226.73	2684.97	2610.05	18.82	OSF1.50	13200.00	9098.96				MinPt-O-SF	
	6206.72	133.30	6117.19	6073.42	70.87	OSF1.50	18591.98	9123.00				TD	
Cimarex Cottonwood Hills 32 State #4H Pikt MWD Off to 8250ft (Def Survey)													Pass
	1825.47	32.81	1823.49	1792.66	N/A	MAS = 10.00 (m)	0.00	0.00				Surface	
	1825.22	32.81	1823.21	1792.41	63963.49	MAS = 10.00 (m)	20.00	20.00				MinPt-O-SF	
	1825.20	32.81	1823.20	1792.39	71865.33	MAS = 10.00 (m)	23.00	23.00				WRP	
	1785.24	32.81	1773.09	1752.43	175.51	MAS = 10.00 (m)	2300.00	2300.00				MinPts	
	1785.25	32.81	1773.07	1752.44	175.11	MAS = 10.00 (m)	2310.00	2310.00				MINPT-O-EOU	
	1790.03	32.81	1777.63	1757.22	171.65	MAS = 10.00 (m)	2470.00	2469.90				MinPt-O-SF	
	1795.72	32.81	1783.29	1762.91	171.58	MAS = 10.00 (m)	2550.00	2549.68				MinPt-O-SF	
	1844.92	32.81	1832.14	1812.12	170.63	MAS = 10.00 (m)	2900.00	2895.62				MINPT-O-EOU	
	2253.93	32.81	2234.67	2221.12	130.33	MAS = 10.00 (m)	5030.55	4979.62				MinPt-O-SF	
	2274.38	34.18	2250.93	2240.19	105.84	OSF1.50	7340.00	7284.69				MinPt-CICI	
	2268.51	37.98	2242.53	2230.53	94.43	OSF1.50	8040.00	7984.69				MinPt-CICI	
	2268.62	38.31	2242.42	2230.31	93.57	OSF1.50	8100.00	8044.69				MINPT-O-EOU	
	2268.70	38.42	2242.43	2230.28	93.29	OSF1.50	8120.00	8064.69				MinPt-O-SF	
	2273.78	40.68	2246.00	2233.10	88.08	OSF1.50	8390.00	8334.69				MinPt-O-SF	
	2297.94	41.89	2268.35	2256.05	86.30	OSF1.50	8670.00	8614.64				MinPt-O-SF	
	10403.30	58.17	10363.86	10345.13	277.66	OSF1.50	18591.98	9123.00				TD	
COG Populus Federal 3H (Offset) AP# 30-015-43256 ST01 Gyro-MWD Off-12119ft (Def Survey)													Pass
	8957.58	92.69	8895.46	8864.89	146.50	OSF1.50	0.00	0.00				Surface	
	8938.25	92.81	8876.05	8845.45	146.00	OSF1.50	23.00	23.00				WRP	
	6713.67	82.14	6658.58	6631.53	124.06	OSF1.50	2900.00	2895.62				MinPts	
	5381.57	80.03	5326.72	5301.54	106.76	OSF1.50	5450.00	5394.81				MinPt-O-SF	
	4940.49	75.28	4888.23	4865.21	107.18	OSF1.50	7590.00	7534.69				MinPts	
	1867.16	195.11	1736.76	1672.05	14.42	OSF1.50	13700.00	9101.19				MinPt-O-SF	
	1865.45	193.86	1735.88	1671.59	14.50	OSF1.50	13810.00	9101.68				MinPt-O-SF	
	1865.29	193.67	1735.85	1671.62	14.51	OSF1.50	13830.00	9101.76				MINPT-O-EOU	
	1865.13	193.19	1736.01	1671.94	14.55	OSF1.50	13880.00	9101.99				MinPt-CICI	
	1865.03	183.13	1742.62	1681.90	15.35	OSF1.50	14640.00	9105.38				MinPt-O-SF	
	1864.93	183.01	1742.60	1681.93	15.36	OSF1.50	14660.00	9105.47				MINPT-O-EOU	
	1860.90	180.19	1740.45	1680.71	15.57	OSF1.50	14970.00	9106.85				MinPt-O-SF	
	1860.71	180.16	1740.27	1680.55	15.57	OSF1.50	15000.00	9106.98				MinPt-O-SF	
	1860.68	180.13	1740.26	1680.55	15.57	OSF1.50	15010.00	9107.03				MINPT-O-EOU	
	1860.65	180.04	1740.29	1680.60	15.58	OSF1.50	15040.00	9107.16				MinPt-CICI	
	1855.19	178.47	1735.88	1676.72	15.67	OSF1.50	15390.00	9108.72				MinPt-O-SF	

Offset Trajectory	Separation			Allow Dev. (ft)	Sep. Fac.	Controlling Rule	Reference Trajectory		Risk Level			Alert	Status
	Cl-Cl (ft)	MAS (ft)	EOU (ft)				MD (ft)	TVD (ft)	Alert	Minor	Major		
1854.97	178.44	1735.68	1676.53	15.67		OSF1.50	15450.00	9108.99				MinPts	
1854.96	178.43	1735.68	1676.53	15.67		OSF1.50	15460.00	9109.03				MinPt-CICI	
1854.30	178.22	1735.16	1676.08	15.69		OSF1.50	15710.00	9110.15				MinPt-CICI	
1854.31	178.25	1735.15	1676.06	15.68		OSF1.50	15720.00	9110.19				MINPT-O-EOU	
1854.33	178.27	1735.15	1676.05	15.68		OSF1.50	15730.00	9110.24				MinPt-O-ADP	
1854.59	178.40	1735.33	1676.19	15.67		OSF1.50	15780.00	9110.46				MinPt-O-SF	
1854.67	178.39	1735.41	1676.28	15.67		OSF1.50	15880.00	9110.91				MinPt-CICI	
1854.70	178.48	1735.39	1676.22	15.67		OSF1.50	15900.00	9111.00				MINPT-O-EOU	
1854.74	178.52	1735.40	1676.22	15.66		OSF1.50	15910.00	9111.04				MinPt-O-ADP	
1855.68	178.86	1736.11	1676.82	15.64		OSF1.50	15990.00	9111.40				MinPt-O-SF	
1847.73	183.53	1725.05	1664.20	15.18		OSF1.50	16780.00	9114.92				MinPt-CICI	
1847.63	184.50	1724.30	1663.13	15.09		OSF1.50	16880.00	9115.37				MinPt-CICI	
1847.77	184.93	1724.16	1662.84	15.06		OSF1.50	16920.00	9115.54				MINPT-O-EOU	
1847.95	185.14	1724.19	1662.81	15.04		OSF1.50	16940.00	9115.63				MinPt-O-ADP	
1850.12	187.01	1725.11	1663.11	14.91		OSF1.50	17100.00	9116.35				MinPt-CICI	
1850.36	187.74	1724.87	1662.62	14.85		OSF1.50	17160.00	9116.61				MINPT-O-EOU	
1850.57	187.98	1724.92	1662.59	14.84		OSF1.50	17180.00	9116.70				MinPt-O-ADP	
1852.18	190.14	1725.09	1662.04	14.68		OSF1.50	17340.00	9117.42				MINPT-O-EOU	
1852.52	190.53	1725.17	1661.99	14.65		OSF1.50	17370.00	9117.55				MinPt-O-ADP	
1852.94	193.91	1723.34	1659.03	14.40		OSF1.50	17590.00	9118.53				MinPt-CICI	
1853.25	194.78	1723.07	1658.48	14.34		OSF1.50	17650.00	9118.80				MINPT-O-EOU	
1853.49	195.06	1723.12	1658.43	14.32		OSF1.50	17670.00	9118.89				MinPt-O-ADP	
1854.00	199.11	1720.93	1654.89	14.03		OSF1.50	17800.00	9119.91				MinPt-CICI	
1854.13	199.51	1720.80	1654.62	14.00		OSF1.50	17830.00	9120.05				MINPT-O-EOU	
1854.24	199.64	1720.82	1654.60	13.99		OSF1.50	17940.00	9120.09				MinPt-O-ADP	
1870.19	202.49	1734.87	1667.70	13.91		OSF1.50	18210.00	9121.30				MinPt-O-SF	
1911.43	204.66	1774.67	1706.78	14.07		OSF1.50	18500.00	9122.59				MinPt-O-SF	
1928.30	205.24	1791.14	1723.05	14.15		OSF1.50	18591.98	9123.00				TD	

COG Populus Federal 2H
(Offset) AP# 30-015-44102
Gyro+MWD Off-12200ft (Def
Survey)

Pass

9109.91	105.64	9039.15	9004.27	130.56		OSF1.50	0.00	0.00				Surface	
9090.80	105.79	9019.94	8985.01	130.10		OSF1.50	23.00	23.00				WRP	
6911.18	107.75	6839.02	6803.43	97.08		OSF1.50	2900.00	2895.62				MinPts	
5303.26	134.27	5212.03	5168.99	61.55		OSF1.50	7630.00	7574.69				MinPts	
5304.92	134.35	5213.65	5170.57	61.52		OSF1.50	7760.00	7704.69				MinPt-O-SF	
2846.21	250.91	2678.61	2595.30	17.08		OSF1.50	13530.00	9100.43				MinPt-O-SF	
2842.52	247.87	2676.95	2594.65	17.26		OSF1.50	13650.00	9100.96				MinPt-O-ADP	
2839.88	245.07	2676.17	2594.81	17.45		OSF1.50	13750.00	9101.41				MINPT-O-EOU	
2828.30	234.43	2671.69	2593.87	18.17		OSF1.50	14130.00	9103.10				MinPt-O-ADP	
2819.57	225.86	2668.67	2593.71	18.80		OSF1.50	14460.00	9104.57				MinPt-O-ADP	
2817.22	223.57	2667.85	2593.65	18.98		OSF1.50	14570.00	9105.06				MinPt-O-ADP	
2816.23	222.45	2667.60	2593.78	19.07		OSF1.50	14630.00	9105.33				MINPT-O-EOU	
2812.57	218.09	2666.85	2594.48	19.43		OSF1.50	14810.00	9106.14				MinPt-O-ADP	
2810.13	214.97	2666.49	2595.16	19.69		OSF1.50	14990.00	9106.94				MINPT-O-EOU	
2806.84	210.77	2666.00	2596.07	20.06		OSF1.50	15200.00	9107.87				MinPt-O-ADP	
2800.98	205.48	2663.67	2595.50	20.54		OSF1.50	15580.00	9109.57				MinPt-O-ADP	
2800.89	205.37	2663.65	2595.52	20.55		OSF1.50	15590.00	9109.61				MINPT-O-EOU	
2799.30	203.68	2663.19	2595.62	20.71		OSF1.50	15750.00	9110.33				MinPt-O-ADP	
2799.21	203.56	2663.17	2595.65	20.72		OSF1.50	15770.00	9110.42				MINPT-O-EOU	
2797.56	200.66	2663.46	2596.90	21.01		OSF1.50	16060.00	9111.71				MinPt-O-ADP	
2795.31	199.22	2662.17	2596.09	21.14		OSF1.50	16230.00	9112.47				MinPt-O-ADP	
2794.14	198.20	2661.68	2595.94	21.24		OSF1.50	16280.00	9112.69				MinPts	
2787.37	196.66	2655.93	2590.70	21.36		OSF1.50	16400.00	9113.23				MinPt-O-SF	
2713.11	211.00	2572.11	2502.10	19.37		OSF1.50	18070.00	9120.67				MinPt-CICI	
2713.36	211.80	2571.83	2501.56	19.30		OSF1.50	18120.00	9120.90				MINPT-O-EOU	
2713.61	212.10	2571.88	2501.51	19.27		OSF1.50	18140.00	9120.98				MinPt-O-ADP	
2732.07	215.61	2588.00	2516.46	19.09		OSF1.50	18440.00	9122.32				MinPt-O-SF	
2752.17	216.66	2607.40	2535.51	19.13		OSF1.50	18591.98	9123.00				TD	

Cimarex Cottonwood Hills 32
State #5H XEM+MWD Off to
11859ft MD (Def Survey)

Pass

3444.44	32.81	3442.46	3411.64	N/A		MAS = 10.00 (m)	0.00	0.00				Surface	
3443.92	32.81	3441.85	3411.11	38855.88		MAS = 10.00 (m)	23.00	23.00				MinPt-O-SF	
3436.71	32.81	3432.57	3403.90	1586.25		MAS = 10.00 (m)	520.00	520.00				MinPts	
3436.76	32.81	3432.53	3403.95	1527.49		MAS = 10.00 (m)	540.00	540.00				MINPT-O-EOU	
3421.04	32.81	3411.79	3388.24	470.09		MAS = 10.00 (m)	1680.00	1680.00				MinPts	
3421.14	32.81	3411.70	3388.33	458.59		MAS = 10.00 (m)	1720.00	1720.00				MINPT-O-EOU	
3431.58	32.81	3419.53	3398.77	340.83		MAS = 10.00 (m)	2310.00	2310.00				MINPT-O-EOU	
3433.16	32.81	3420.93	3400.35	334.86		MAS = 10.00 (m)	2400.00	2399.98				MinPt-O-SF	
3438.80	32.81	3426.56	3406.00	334.73		MAS = 10.00 (m)	2510.00	2509.81				MinPt-O-SF	
3492.35	32.81	3479.82	3459.55	330.55		MAS = 10.00 (m)	2900.00	2895.62				MINPT-O-EOU	
3934.39	32.81	3915.16	3901.58	228.02		MAS = 10.00 (m)	5100.00	5047.72				MinPt-O-SF	
3977.12	32.81	3955.51	3944.31	202.52		MAS = 10.00 (m)	6640.00	6584.69				MinPts	
3977.17	32.81	3955.47	3944.36	201.60		MAS = 10.00 (m)	6670.00	6614.69				MINPT-O-EOU	
3937.73	44.58	3907.35	3893.15	138.56		OSF1.50	7600.00	7544.69				MinPt-CICI	
3937.78	44.72	3907.31	3893.06	138.13		OSF1.50	7620.00	7564.69				MINPT-O-EOU	
3937.84	44.79	3907.32	3893.06	137.92		OSF1.50	7630.00	7574.69				MinPt-O-ADP	
4142.86	62.13	4100.78	4080.73	103.26		OSF1.50	8930.00	8855.01				MinPts	
3994.81	281.13	3806.73	3713.68	21.46		OSF1.50	13090.00	9098.47				MinPt-CICI	
3994.82	281.15	3806.72	3713.68	21.45		OSF1.50	13100.00	9098.51				MinPts	
3995.79	281.33	3807.57	3714.46	21.49		OSF1.50	13180.00	9098.87				MinPt-O-SF	
6798.01	189.96	6670.71	6608.05	54.23		OSF1.50	18591.98	9123.00				TD	

Dinero State M T S #1 (Offset)
AP# 30-015-23971 D&A Blind
Off-293ft (Def Survey)

Pass

4972.13	32.81	4970.85	4939.32	N/A		MAS = 10.00 (m)	0.00	0.00				Surface	
4971.73	32.81	4970.38	4938.93	72870.69		MAS = 10.00 (m)	23.00	23.00				MinPt-O-SF	
4971.17	47.27	4939.23	4923.90	162.11		OSF1.50	390.00	390.00				MinPt-CICI	
4971.18	47.39	4939.16	4923.80	161.71		OSF1.50	400.00	400.00				MinPts	
4972.60	47.42	4940.57	4925.19	161.69		OSF1.50	510.00	510.00				MinPt-O-SF	
5602.62	45.18	5572.07	5557.44	191.43		OSF1.50	2900.00	2895.62				MinPts	
9460.60	86.27	9402.66	9374.33	166.96		OSF1.50	12730.00	9096.86				MinPt-CICI	
9461.35	88.52	9401.90	9372.83	162.66		OSF1.50	12850.00	9097.39				MINPT-O-EOU	
9462.29	89.65	9402.10	9372.65	160.61		OSF1.50	12910.00	9097.66				MinPt-O-ADP	
11129.05	173.81	11012.75	10955.24	96.75		OSF1.50	18591.98	9123.00				MinPt-O-SF	

PECOS DISTRICT DRILLING CONDITIONS OF APPROVAL

OPERATOR'S NAME:	Cimarex
LEASE NO.:	NMNM114348
LOCATION:	Section 32, T.25 S., R.27 E., NMPM
COUNTY:	Eddy County, New Mexico

WELL NAME & NO.:	Southern Hills 32-29 Fed Com 2H
SURFACE HOLE FOOTAGE:	820'/S & 1558'/W
BOTTOM HOLE FOOTAGE:	100'/N & 990'/W

COA

H2S	<input type="radio"/> Yes	<input checked="" type="radio"/> No	
Potash	<input checked="" type="radio"/> None	<input type="radio"/> Secretary	<input type="radio"/> R-111-P
Cave/Karst Potential	<input type="radio"/> Low	<input type="radio"/> Medium	<input checked="" type="radio"/> High
Cave/Karst Potential	<input type="radio"/> Critical		
Variance	<input type="radio"/> None	<input checked="" type="radio"/> Flex Hose	<input type="radio"/> Other
Wellhead	<input type="radio"/> Conventional	<input checked="" type="radio"/> Multibowl	<input type="radio"/> Both
Other	<input type="checkbox"/> 4 String Area	<input type="checkbox"/> Capitan Reef	<input type="checkbox"/> WIPP
Other	<input type="checkbox"/> Fluid Filled	<input type="checkbox"/> Cement Squeeze	<input type="checkbox"/> Pilot Hole
Special Requirements	<input type="checkbox"/> Water Disposal	<input checked="" type="checkbox"/> COM	<input type="checkbox"/> Unit

A. HYDROGEN SULFIDE

Hydrogen Sulfide (H2S) monitors shall be installed prior to drilling out the surface shoe. If H2S is detected in concentrations greater than 100 ppm, the Hydrogen Sulfide area shall meet Onshore Order 6 requirements, which includes equipment and personnel/public protection items. If Hydrogen Sulfide is encountered, provide measured values and formations to the BLM.

B. CASING

1. The **13-3/8** inch surface casing shall be set at approximately **600** feet (a minimum of **70 feet (Eddy County)** into the Rustler Anhydrite and above the salt) and cemented to the surface.
 - a. If cement does not circulate to the surface, the appropriate BLM office shall be notified and a temperature survey utilizing an electronic type temperature survey with surface log readout will be used or a cement bond log shall be run to verify the top of the cement. Temperature survey will be run a minimum of six hours after pumping cement and ideally between 8-10 hours after completing the cement job.
 - b. Wait on cement (WOC) time for a primary cement job will be a minimum of **8**

- hours** or 500 pounds compressive strength, whichever is greater. (This is to include the lead cement)
- c. Wait on cement (WOC) time for a remedial job will be a minimum of 4 hours after bringing cement to surface or 500 pounds compressive strength, whichever is greater.
 - d. If cement falls back, remedial cementing will be done prior to drilling out that string.
2. The minimum required fill of cement behind the **9-5/8** inch intermediate casing is:
- Cement to surface. If cement does not circulate see B.1.a, c-d above.
- Wait on cement (WOC) time for a primary cement job is to include the lead cement slurry due to cave/karst or potash.**
- ❖ In High Cave/Karst Areas if cement does not circulate to surface on the first two casing strings, the cement on the 3rd casing string must come to surface.
3. The minimum required fill of cement behind the **7** inch production casing Cement should tie-back at least **200 feet** into previous casing string. Operator shall provide method of verification.
4. The minimum required fill of cement behind the **4-1/2** inch production liner is:
- Cement should tie-back **100 feet** into the previous casing. Operator shall provide method of verification. **Excess calculates to be 11%. Additional cement maybe required.**

C. PRESSURE CONTROL

1. **Variance approved to use flex line from BOP to choke manifold. Manufacturer's specification to be readily available. No external damage to flex line. Flex line to be installed as straight as possible (no hard bends).'**
2. Operator has proposed a multi-bowl wellhead assembly. This assembly will only be tested when installed on the surface casing. Minimum working pressure of the blowout preventer (BOP) and related equipment (BOPE) required for drilling below the surface casing shoe shall be **5000 (5M)** psi.
 - a. Wellhead shall be installed by manufacturer's representatives, submit documentation with subsequent sundry.
 - b. If the welding is performed by a third party, the manufacturer's representative shall monitor the temperature to verify that it does not exceed the maximum temperature of the seal.
 - c. Manufacturer representative shall install the test plug for the initial BOP test.
 - d. If the cement does not circulate and one inch operations would have been possible with a standard wellhead, the well head shall be cut off, cementing operations performed and another wellhead installed.

- e. Whenever any seal subject to test pressure is broken, all the tests in OOGO2.III.A.2.i must be followed.

D. SPECIAL REQUIREMENT (S)

Communitization Agreement

- The operator will submit a Communitization Agreement to the Santa Fe Office, 301 Dinosaur Trail Santa Fe, New Mexico 87508, at least 90 days before the anticipated date of first production from a well subject to a spacing order issued by the New Mexico Oil Conservation Division. The Communitization Agreement will include the signatures of all working interest owners in all Federal and Indian leases subject to the Communitization Agreement (i.e., operating rights owners and lessees of record), or certification that the operator has obtained the written signatures of all such owners and will make those signatures available to the BLM immediately upon request.
- If the operator does not comply with this condition of approval, the BLM may take enforcement actions that include, but are not limited to, those specified in 43 CFR 3163.1.
- In addition, the well sign shall include the surface and bottom hole lease numbers. When the Communitization Agreement number is known, it shall also be on the sign.

GENERAL REQUIREMENTS

The BLM is to be notified in advance for a representative to witness:

- a. Spudding well (minimum of 24 hours)
- b. Setting and/or Cementing of all casing strings (minimum of 4 hours)
- c. BOPE tests (minimum of 4 hours)

☒ Eddy County

Call the Carlsbad Field Office, 620 East Greene St., Carlsbad, NM 88220,
(575) 361-2822

☒ Lea County

Call the Hobbs Field Station, 414 West Taylor, Hobbs NM 88240, (575)
393-3612

1. Unless the production casing has been run and cemented or the well has been properly plugged, the drilling rig shall not be removed from over the hole without prior approval.
 - a. In the event the operator has proposed to drill multiple wells utilizing a skid/walking rig. Operator shall secure the wellbore on the current well, after installing and testing the wellhead, by installing a blind flange of like pressure

- rating to the wellhead and a pressure gauge that can be monitored while drilling is performed on the other well(s).
- b. When the operator proposes to set surface casing with Spudder Rig
 - Notify the BLM when moving in and removing the Spudder Rig.
 - Notify the BLM when moving in the 2nd Rig. Rig to be moved in within 90 days of notification that Spudder Rig has left the location.
 - BOP/BOPE test to be conducted per Onshore Oil and Gas Order No. 2 as soon as 2nd Rig is rigged up on well.
 2. Floor controls are required for 3M or Greater systems. These controls will be on the rig floor, unobstructed, readily accessible to the driller and will be operational at all times during drilling and/or completion activities. Rig floor is defined as the area immediately around the rotary table; the area immediately above the substructure on which the draw works are located, this does not include the dog house or stairway area.
 3. The record of the drilling rate along with the GR/N well log run from TD to surface (horizontal well – vertical portion of hole) shall be submitted to the BLM office as well as all other logs run on the borehole 30 days from completion. If available, a digital copy of the logs is to be submitted in addition to the paper copies. The Rustler top and top and bottom of Salt are to be recorded on the Completion Report.

A. CASING

1. Changes to the approved APD casing program need prior approval if the items substituted are of lesser grade or different casing size or are Non-API. The Operator can exchange the components of the proposal with that of superior strength (i.e. changing from J-55 to N-80, or from 36# to 40#). Changes to the approved cement program need prior approval if the altered cement plan has less volume or strength or if the changes are substantial (i.e. Multistage tool, ECP, etc.). The initial wellhead installed on the well will remain on the well with spools used as needed.
2. Wait on cement (WOC) for Potash Areas: After cementing but before commencing any tests, the casing string shall stand cemented under pressure until both of the following conditions have been met: 1) cement reaches a minimum compressive strength of 500 psi for all cement blends, 2) until cement has been in place at least 24 hours. WOC time will be recorded in the driller's log. The casing integrity test can be done (prior to the cement setting up) immediately after bumping the plug.
3. Wait on cement (WOC) for Water Basin: After cementing but before commencing any tests, the casing string shall stand cemented under pressure until both of the following conditions have been met: 1) cement reaches a minimum compressive strength of 500 psi at the shoe, 2) until cement has been in place at least 8 hours. WOC time will be recorded in the driller's log. See individual casing strings for details regarding lead cement slurry requirements. The casing integrity test can be done (prior to the cement setting up) immediately after bumping the plug.

4. Provide compressive strengths including hours to reach required 500 pounds compressive strength prior to cementing each casing string. Have well specific cement details onsite prior to pumping the cement for each casing string.
5. No pea gravel permitted for remedial or fall back remedial without prior authorization from the BLM engineer.
6. On that portion of any well approved for a 5M BOPE system or greater, a pressure integrity test of each casing shoe shall be performed. Formation at the shoe shall be tested to a minimum of the mud weight equivalent anticipated to control the formation pressure to the next casing depth or at total depth of the well. This test shall be performed before drilling more than 20 feet of new hole.
7. If hardband drill pipe is rotated inside casing, returns will be monitored for metal. If metal is found in samples, drill pipe will be pulled and rubber protectors which have a larger diameter than the tool joints of the drill pipe will be installed prior to continuing drilling operations.
8. Whenever a casing string is cemented in the R-111-P potash area, the NMOCD requirements shall be followed.

B. PRESSURE CONTROL

1. All blowout preventer (BOP) and related equipment (BOPE) shall comply with well control requirements as described in Onshore Oil and Gas Order No. 2 and API RP 53 Sec. 17.
2. If a variance is approved for a flexible hose to be installed from the BOP to the choke manifold, the following requirements apply: The flex line must meet the requirements of API 16C. Check condition of flexible line from BOP to choke manifold, replace if exterior is damaged or if line fails test. Line to be as straight as possible with no hard bends and is to be anchored according to Manufacturer's requirements. The flexible hose can be exchanged with a hose of equal size and equal or greater pressure rating. Anchor requirements, specification sheet and hydrostatic pressure test certification matching the hose in service, to be onsite for review. These documents shall be posted in the company man's trailer and on the rig floor.
3. 5M or higher system requires an HCR valve, remote kill line and annular to match. The remote kill line is to be installed prior to testing the system and tested to stack pressure.
4. If the operator has proposed a multi-bowl wellhead assembly in the APD. The following requirements must be met:
 - a. Wellhead shall be installed by manufacturer's representatives, submit documentation with subsequent sundry.

- b. If the welding is performed by a third party, the manufacturer's representative shall monitor the temperature to verify that it does not exceed the maximum temperature of the seal.
 - c. Manufacturer representative shall install the test plug for the initial BOP test.
 - d. Whenever any seal subject to test pressure is broken, all the tests in OOGO2.III.A.2.i must be followed.
 - e. If the cement does not circulate and one inch operations would have been possible with a standard wellhead, the well head shall be cut off, cementing operations performed and another wellhead installed.
5. The appropriate BLM office shall be notified a minimum of 4 hours in advance for a representative to witness the tests.
- a. In a water basin, for all casing strings utilizing slips, these are to be set as soon as the crew and rig are ready and any fallback cement remediation has been done. The casing cut-off and BOP installation can be initiated four hours after installing the slips, which will be approximately six hours after bumping the plug. For those casing strings not using slips, the minimum wait time before cut-off is eight hours after bumping the plug. BOP/BOPE testing can begin after cut-off or once cement reaches 500 psi compressive strength (including lead when specified), whichever is greater. However, if the float does not hold, cut-off cannot be initiated until cement reaches 500 psi compressive strength (including lead when specified).
 - b. In potash areas, for all casing strings utilizing slips, these are to be set as soon as the crew and rig are ready and any fallback cement remediation has been done. For all casing strings, casing cut-off and BOP installation can be initiated at twelve hours after bumping the plug. However, **no tests** shall commence until the cement has had a minimum of 24 hours setup time, except the casing pressure test can be initiated immediately after bumping the plug (only applies to single stage cement jobs).
 - c. The tests shall be done by an independent service company utilizing a test plug not a cup or J-packer. The operator also has the option of utilizing an independent tester to test without a plug (i.e. against the casing) pursuant to Onshore Order 2 with the pressure not to exceed 70% of the burst rating for the casing. Any test against the casing must meet the WOC time for water basin (8 hours) or potash (24 hours) or 500 pounds compressive strength, whichever is greater, prior to initiating the test (see casing segment as lead cement may be critical item).
 - d. The test shall be run on a 5000 psi chart for a 2-3M BOP/BOP, on a 10000 psi chart for a 5M BOP/BOPE and on a 15000 psi chart for a 10M BOP/BOPE. If a linear chart is used, it shall be a one hour chart. A circular chart shall

have a maximum 2 hour clock. If a twelve hour or twenty-four hour chart is used, tester shall make a notation that it is run with a two hour clock.

- e. The results of the test shall be reported to the appropriate BLM office.
- f. All tests are required to be recorded on a calibrated test chart. A copy of the BOP/BOPE test chart and a copy of independent service company test will be submitted to the appropriate BLM office.
- g. The BOP/BOPE test shall include a low pressure test from 250 to 300 psi. The test will be held for a minimum of 10 minutes if test is done with a test plug and 30 minutes without a test plug. This test shall be performed prior to the test at full stack pressure.
- h. BOP/BOPE must be tested by an independent service company within 500 feet of the top of the Wolfcamp formation if the time between the setting of the intermediate casing and reaching this depth exceeds 20 days. This test does not exclude the test prior to drilling out the casing shoe as per Onshore Order No. 2.

C. DRILLING MUD

Mud system monitoring equipment, with derrick floor indicators and visual and audio alarms, shall be operating before drilling into the Wolfcamp formation, and shall be used until production casing is run and cemented.

D. WASTE MATERIAL AND FLUIDS

All waste (i.e. drilling fluids, trash, salts, chemicals, sewage, gray water, etc.) created as a result of drilling operations and completion operations shall be safely contained and disposed of properly at a waste disposal facility. No waste material or fluid shall be disposed of on the well location or surrounding area.

Porto-johns and trash containers will be on-location during fracturing operations or any other crew-intensive operations.

ZS101321

Southern Hills 32-5 Fed Com 2H

Cimarex Energy Co.

Sec. 32, 25S, 27E

Eddy Co., NM

- 1 All Company and Contract personnel admitted on location must be trained by a qualified H₂S safety instructor to the following:
 - A. Characteristics of H₂S
 - B. Physical effects and hazards
 - C. Principal and operation of H₂S detectors, warning system and briefing areas.
 - D. Evacuation procedure, routes and first aid.
 - E. Proper use of safety equipment & life support systems
 - F. Essential personnel meeting Medical Evaluation criteria will receive additional training on the proper use of 30 minute pressure demand air packs.

H₂S Detection and Alarm Systems:

 - A. H₂S sensors/detectors to be located on the drilling rig floor, in the base of the sub structure/cellar area, on the mud pits in the shale shaker area. Additional H₂S detectors may be placed as deemed necessary.
 - B. An audio alarm system will be installed on the derrick floor and in the top doghouse.
- 3 Windsock and/or wind streamers:
 - A. Windsock at mudpit area should be high enough to be visible.
 - B. Windsock on the rig floor and / or top doghouse should be high enough to be visible.
- 4 Condition Flags and Signs
 - A. Warning sign on access road to location.
 - B. Flags to be displayed on sign at entrance to location. Green flag indicates normal safe condition. Yellow flag indicates potential pressure and danger. Red flag indicates danger (H₂S present in dangerous concentration). Only H₂S trained and certified personnel admitted to location.
- 5 Well control equipment:
 - A. See exhibit "E-1"
- 6 Communication:
 - A. While working under masks chalkboards will be used for communication.
 - B. Hand signals will be used where chalk board is inappropriate.
 - C. Two way radio will be used to communicate off location in case of emergency help is required. In most cases cellular telephones will be available at most drilling foreman's trailer or living quarters.
- 7 Drillstem Testing:

No DSTs or cores are planned at this time.
- 8 Drilling contractor supervisor will be required to be familiar with the effects H₂S has on tubular goods and other mechanical equipment.
- 9 If H₂S is encountered, mud system will be altered if necessary to maintain control of formation. A mud gas separator will be brought into service along with H₂S scavengers if necessary.

H₂S Contingency Plan
Southern Hills 32-29 Fed Com 2H
Cimarex Energy Co.
Sec. 32, 25S, 27E
Eddy Co., NM

Emergency Procedures

In the event of a release of gas containing H₂S, the first responder(s) must:

- « Isolate the area and prevent entry by other persons into the 100 ppm ROE.
- « Evacuate any public places encompassed by the 100 ppm ROE.
- « Be equipped with H₂S monitors and air packs in order to control the release.
- « Use the "buddy system" to ensure no injuries occur during the 432-620-1975
- « Take precautions to avoid personal injury during this operation.
- « Contact operator and/or local officials to aid in operation. See list of phone numbers attached.
- « Have received training in the:
 - Detection of H₂S, and
 - Measures for protection against the gas,
 - Equipment used for protection and emergency response.

Ignition of Gas Source

Should control of the well be considered lost and ignition considered, take care to protect against exposure to Sulfur Dioxide (SO₂). Intentional ignition must be coordinated with the NMOCD and local officials. Additionally, the NM State Police may become involved. NM State Police shall be the Incident Command on scene of any major release. Take care to protect downwind whenever there is an ignition of the gas.

Characteristics of H₂S and SO₂

Please see attached International Chemical Safety Cards.

Contacting Authorities

Cimarex Energy Co. of Colorado's personnel must liaise with local and state agencies to ensure a proper response to a major release. Additionally, the OCD must be notified of the release as soon as possible but no later than 4 hours. Agencies will ask for information such as type and volume of release, wind direction, location of release, etc. Be prepared with all information available including directions to site. The following call list of essential and potential responders has been prepared for use during a release. Cimarex Energy Co. of Colorado's response must be in coordination with the State of New Mexico's "Hazardous Materials Emergency Response Plan" (HMER).

H₂S Contingency Plan Emergency Contact s**Southern Hills 32-29 fed Com 2H**

Cimarex Energy Co.

Sec. 32, 25S, 27E

Eddy Co., NM

Company Office

Cimarex Energy Co. of Colorado	800-969-4789
Co. Office and After-Hours Menu	

Key Personnel

Name	Title	Office	Mobile
Larry Seigrist	Drilling Manager	432-620-1934	580-243-8485
Charlie Pritchard	Drilling Superintendent	432-620-1975	432-238-7084
Roy Shirley	Construction Superintendent		432-634-2136

Artesia

Ambulance	911
State Police	575-746-2703
City Police	575-746-2703
Sheriff's Office	575-746-9888
Fire Department	575-746-2701
Local Emergency Planning Committee	575-746-2122
New Mexico Oil Conservation Division	575-748-1283

Carlsbad

Ambulance	911
State Police	575-885-3137
City Police	575-885-2111
Sheriff's Office	575-887-7551
Fire Department	575-887-3798
Local Emergency Planning Committee	575-887-6544
US Bureau of Land Management	575-887-6544

Santa Fe

New Mexico Emergency Response Commission (Santa Fe)	505-476-9600
New Mexico Emergency Response Commission (Santa Fe) 24 Hrs	505-827-9126
New Mexico State Emergency Operations Center	505-476-9635

National

National Emergency Response Center (Washington, D.C.)	800-424-8802
---	--------------

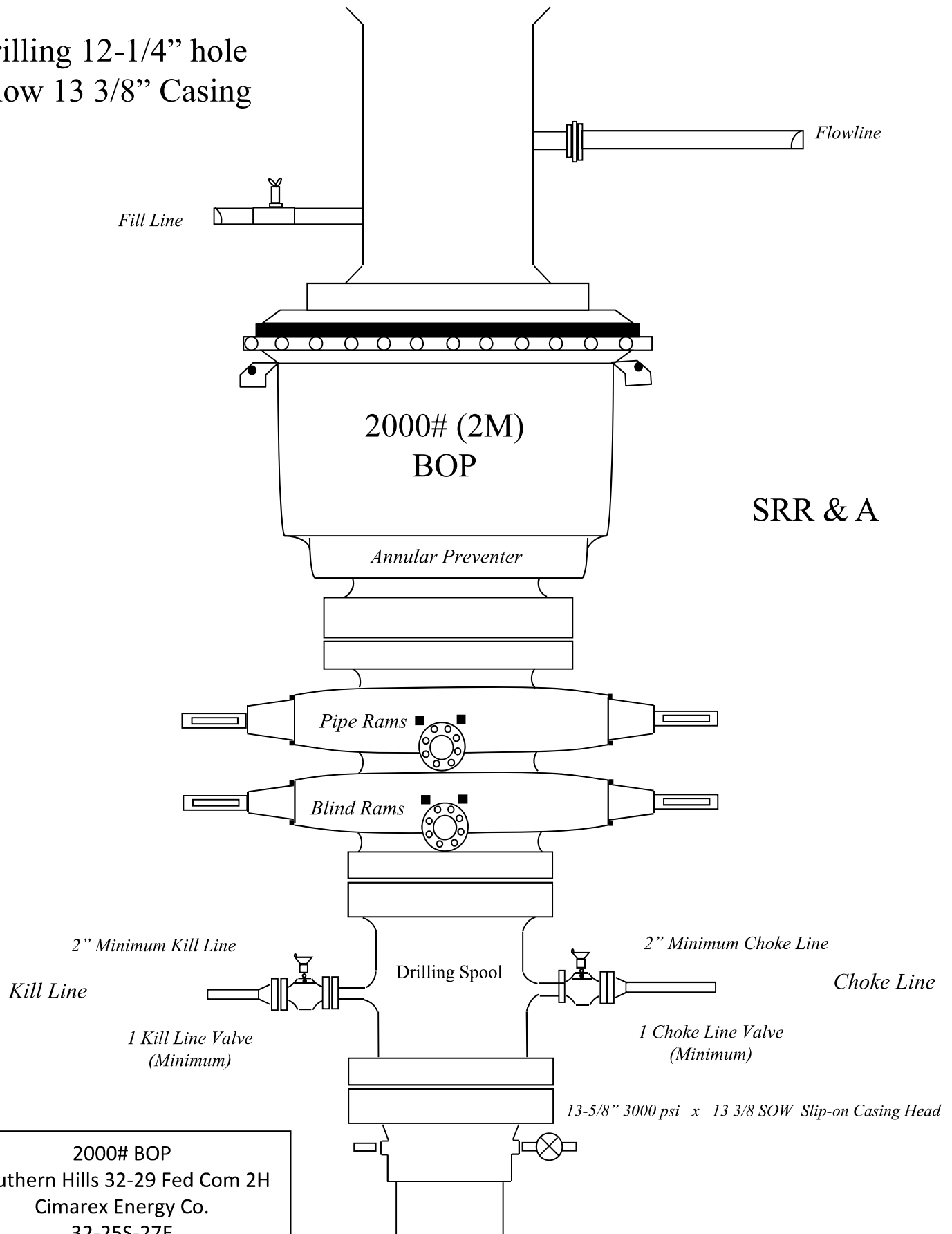
Medical

Flight for Life - 4000 24th St.; Lubbock, TX	806-743-9911
Aerocare - R3, Box 49F; Lubbock, TX	806-747-8923
Med Flight Air Amb - 2301 Yale Blvd S.E., #D3; Albuquerque, NM	505-842-4433
SB Air Med Service - 2505 Clark Carr Loop S.E.; Albuquerque, NM	505-842-4949

Other

Boots & Coots IWC	800-256-9688	or	281-931-8884
Cudd Pressure Control	432-699-0139	or	432-563-3356
Halliburton	575-746-2757		
B.J. Services	575-746-3569		

Drilling 12-1/4" hole
below 13 3/8" Casing



2000# BOP
Southern Hills 32-29 Fed Com 2H
Cimarex Energy Co.
32-25S-27E
Eddy Co., NM

Drilling 8 3/4" hole below
9 5/8" Casing

Fill Line

Flowline

5000# (5M)
BOP

Annular Preventer

SRR & A

Pipe Rams

Blind Rams

2" Minimum Kill Line

Kill Line

Drilling
Spool

3" minimum choke line

Choke Line

2 Valves Minimum
(HCR Required)

2 Valves and a check valve

Wellhead
Assembly

11" 5000 psi x 7-1/16" 10,000 psi
Wellhead Assembly

Wellhead
Assembly

13-5/8" 3000 psi x 11" 5000 psi
Wellhead Assembly

13-5/8" 3000# psi x 13-3/8" SOW Casing Head

5000# BOP
Southern Hills 32-29 Fed Com 2H
Cimarex Energy Co.
32-25S-27E
Eddy Co., NM

Drilling 6" hole below 7"
Casing

Fill Line

Flowline

5000# (5M)
BOP

Annular Preventer

SRR & A

Pipe Rams

Blind Rams

2" Minimum Kill Line

Kill Line

Drilling
Spool

3" minimum choke line

Choke Line

2 Valves Minimum
(HCR Required)

2 Valves and a check valve

Wellhead
Assembly

11" 5000 psi x 7-1/16" 10,000 psi
Wellhead Assembly

Wellhead
Assembly

13-5/8" 3000 psi x 11" 5000 psi
Wellhead Assembly

13-5/8" 3000# psi x 13-3/8" SOW Casing Head

5000# BOP
Southern Hills 32-29 Fed Com 2H
Cimarex Energy Co.
32-25S-27E
Eddy Co., NM

District I

1625 N. French Dr., Hobbs, NM 88240
 Phone:(575) 393-6161 Fax:(575) 393-0720

District II

811 S. First St., Artesia, NM 88210
 Phone:(575) 748-1283 Fax:(575) 748-9720

District III

1000 Rio Brazos Rd., Aztec, NM 87410
 Phone:(505) 334-6178 Fax:(505) 334-6170

District IV

1220 S. St Francis Dr., Santa Fe, NM 87505
 Phone:(505) 476-3470 Fax:(505) 476-3462

State of New Mexico
Energy, Minerals and Natural Resources
Oil Conservation Division
1220 S. St Francis Dr.
Santa Fe, NM 87505

CONDITIONS

Action 104247

CONDITIONS

Operator: CIMAREX ENERGY CO. 600 N. Marienfeld Street Midland, TX 79701	OGRID: 215099
	Action Number: 104247
	Action Type: [C-101] BLM - Federal/Indian Land Lease (Form 3160-3)

CONDITIONS

Created By	Condition	Condition Date
kpickford	Will require a administrative order for non-standard location prior to placing the well on production	5/6/2022
kpickford	Notify OCD 24 hours prior to casing & cement	5/6/2022
kpickford	Will require a File As Drilled C-102 and a Directional Survey with the C-104	5/6/2022
kpickford	Once the well is spud, to prevent ground water contamination through whole or partial conduits from the surface, the operator shall drill without interruption through the fresh water zone or zones and shall immediately set in cement the water protection string	5/6/2022
kpickford	Cement is required to circulate on both surface and intermediate1 strings of casing	5/6/2022
kpickford	Oil base muds are not to be used until fresh water zones are cased and cemented providing isolation from the oil or diesel. This includes synthetic oils. Oil based mud, drilling fluids and solids must be contained in a steel closed loop system	5/6/2022