

Submit a Copy To Appropriate District  
Office  
District I – (575) 393-6161  
1625 N. French Dr., Hobbs, NM 88240  
District II – (575) 748-1283  
811 S. First St., Artesia, NM 88210  
District III – (505) 334-6178  
1000 Rio Brazos Rd., Aztec, NM 87410  
District IV – (505) 476-3460  
1220 S. St. Francis Dr., Santa Fe, NM  
87505

State of New Mexico  
Energy, Minerals and Natural Resources

Form C-103  
Revised July 18, 2013

OIL CONSERVATION DIVISION  
1220 South St. Francis Dr.  
Santa Fe, NM 87505

WELL API NO. 30-025-50193
5. Indicate Type of Lease STATE <input checked="" type="checkbox"/> FEE <input type="checkbox"/>
6. State Oil & Gas Lease No. 317294
7. Lease Name or Unit Agreement Name Convoy 28 State Com
8. Well Number 302H
9. OGRID Number 7377
10. Pool name or Wildcat 96682 Triste Draw; Bone Spring, East

<p><b>SUNDRY NOTICES AND REPORTS ON WELLS</b> (DO NOT USE THIS FORM FOR PROPOSALS TO DRILL OR TO DEEPEN OR PLUG BACK TO A DIFFERENT RESERVOIR. USE "APPLICATION FOR PERMIT" (FORM C-101) FOR SUCH PROPOSALS.)</p>	
1. Type of Well: Oil Well <input checked="" type="checkbox"/> Gas Well <input type="checkbox"/> Other <input type="checkbox"/>	
2. Name of Operator EOG Resources, Inc.	
3. Address of Operator P.O. Box 2267, Midland, Texas 79702	
4. Well Location Unit Letter <u>B</u> : <u>478</u> feet from the <u>North</u> line and <u>2202</u> feet from the East line Section <u>28</u> <u>24S</u> Township <u>33E</u> Range <u>NMNM</u> Lee <u>County</u>	
11. Elevation (Show whether DR, RKB, RT, GR, etc.) 3520' GR	

12. Check Appropriate Box to Indicate Nature of Notice, Report or Other Data

<p><b>NOTICE OF INTENTION TO:</b></p> <p>PERFORM REMEDIAL WORK <input type="checkbox"/> PLUG AND ABANDON <input type="checkbox"/>          TEMPORARILY ABANDON <input type="checkbox"/> CHANGE PLANS <input checked="" type="checkbox"/>          PULL OR ALTER CASING <input type="checkbox"/> MULTIPLE COMPL <input type="checkbox"/>          DOWNHOLE COMMINGLE <input type="checkbox"/>          CLOSED-LOOP SYSTEM <input type="checkbox"/>          OTHER: <input type="checkbox"/></p>		<p><b>SUBSEQUENT REPORT OF:</b></p> <p>REMEDIAL WORK <input type="checkbox"/> ALTERING CASING <input type="checkbox"/>          COMMENCE DRILLING OPNS. <input type="checkbox"/> P AND A <input type="checkbox"/>          CASING/CEMENT JOB <input type="checkbox"/>          OTHER: <input type="checkbox"/></p>	
--------------------------------------------------------------------------------------------------------------------------------------------------------------------------------------------------------------------------------------------------------------------------------------------------------------------------------------------------------------------------------------------------------------------------------------------------------------------------------------------------------------------	--	--------------------------------------------------------------------------------------------------------------------------------------------------------------------------------------------------------------------------------------------------------------------------------------------------------------------------------	--

13. Describe proposed or completed operations. (Clearly state all pertinent details, and give pertinent dates, including estimated date of starting any proposed work). SEE RULE 19.15.7.14 NMAC. For Multiple Completions: Attach wellbore diagram of proposed completion or recompletion.

EOG respectfully requests an amendment to our approved APD for this well to reflect the following changes:

Change BHL to 100' FSL & 2311' FEL, UL OSec 33, T-24S, R-33E

Update casing and cement program to current design.

Spud Date:

Rig Release Date:

I hereby certify that the information above is true and complete to the best of my knowledge and belief.

SIGNATURE \_\_\_\_\_ TITLE Sr Regulatory Specialist DATE 6/13/2022

Type or print name Star Harrell E-mail address: star\_harrell@eogresources.com PHONE: 432-848-9161

**For State Use Only**

APPROVED BY: \_\_\_\_\_ TITLE \_\_\_\_\_ DATE \_\_\_\_\_

Conditions of Approval (if any):

District I  
1625 N. French Dr., Hobbs, NM 88240  
Phone: (575) 393-6161 Fax: (575) 393-0720  
District II  
811 S. First St., Artesia, NM 88210  
Phone: (575) 748-1283 Fax: (575) 748-9720  
District III  
1000 Rio Brazos Road, Aztec, NM 87410  
Phone: (505) 334-6178 Fax: (505) 334-6170  
District IV  
1220 S. St. Francis Dr., Santa Fe, NM 87505  
Phone: (505) 476-3460 Fax: (505) 476-3462

State of New Mexico  
Energy, Minerals & Natural Resources  
Department  
OIL CONSERVATION DIVISION  
1220 South St. Francis Dr.  
Santa Fe, NM 87505

FORM C-102

Revised August 1, 2011

Submit one copy to appropriate

District Office

☐ AMENDED REPORT

## WELL LOCATION AND ACREAGE DEDICATION PLAT

<sup>1</sup> API Number <b>30-025-50193</b>	<sup>2</sup> Pool Code <b>96682</b>	<sup>3</sup> Pool Name <b>Triste Draw; Bone Spring, East</b>
<sup>4</sup> Property Code <b>317294</b>	<sup>5</sup> Property Name <b>CONVOY 28 STATE COM</b>	<sup>6</sup> Well Number <b>302H</b>
<sup>7</sup> OGRID No. <b>7377</b>	<sup>8</sup> Operator Name <b>EOG RESOURCES, INC.</b>	<sup>9</sup> Elevation <b>3520'</b>

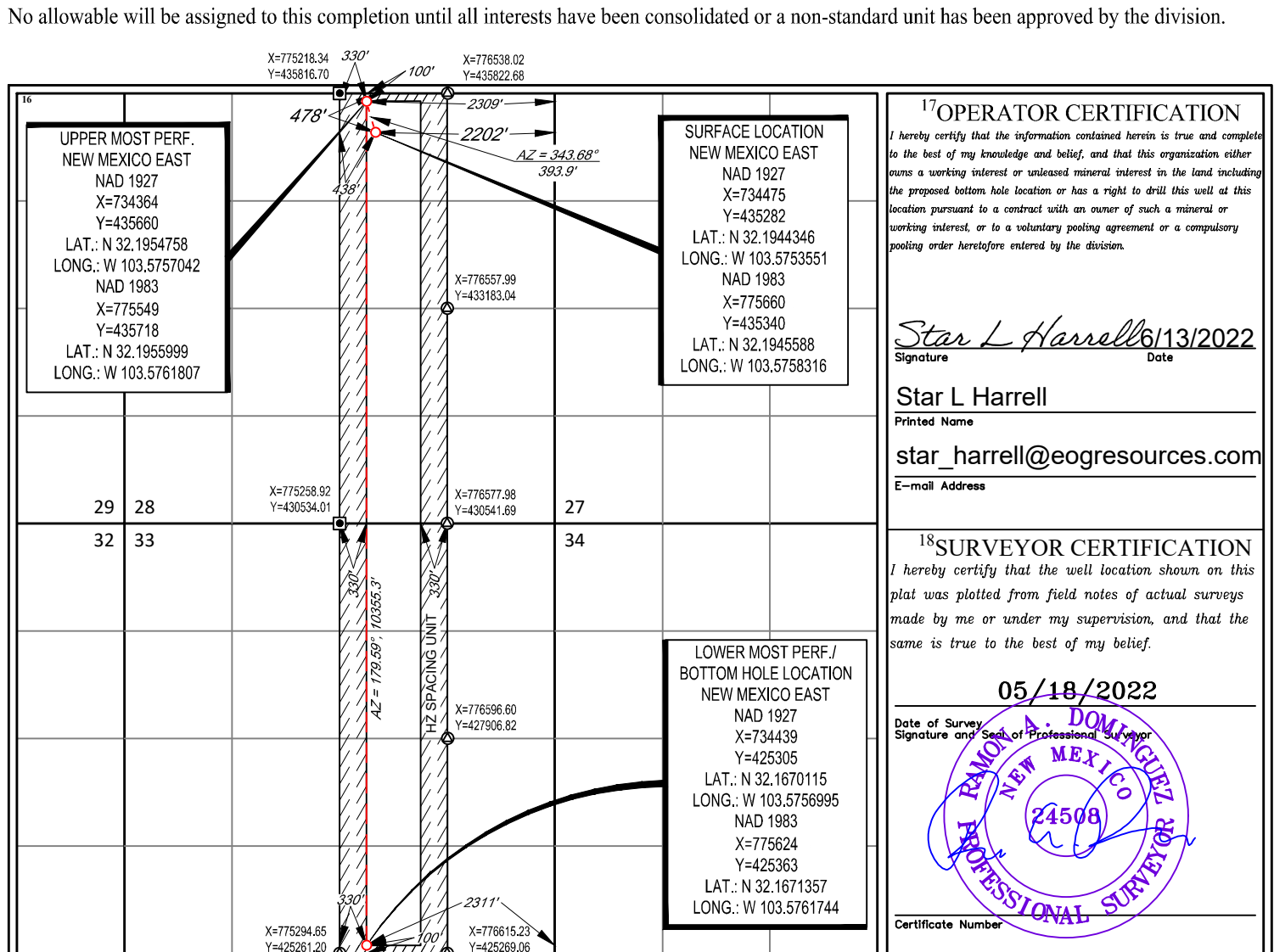
<sup>10</sup>Surface Location

UL or lot no.	Section	Township	Range	Lot Idn	Feet from the	North/South line	Feet from the	East/West line	County
<b>B</b>	<b>28</b>	<b>24-S</b>	<b>33-E</b>	<b>-</b>	<b>478'</b>	<b>NORTH</b>	<b>2202'</b>	<b>EAST</b>	<b>LEA</b>

<sup>11</sup>Bottom Hole Location If Different From Surface

UL or lot no.	Section	Township	Range	Lot Idn	Feet from the	North/South line	Feet from the	East/West line	County
<b>0</b>	<b>33</b>	<b>24-S</b>	<b>33-E</b>	<b>-</b>	<b>100'</b>	<b>SOUTH</b>	<b>2311'</b>	<b>EAST</b>	<b>LEA</b>

<sup>12</sup> Dedicated Acres <b>320</b>	<sup>13</sup> Joint or Infill	<sup>14</sup> Consolidation Code	<sup>15</sup> Order No.
---------------------------------------------	-------------------------------	----------------------------------	-------------------------



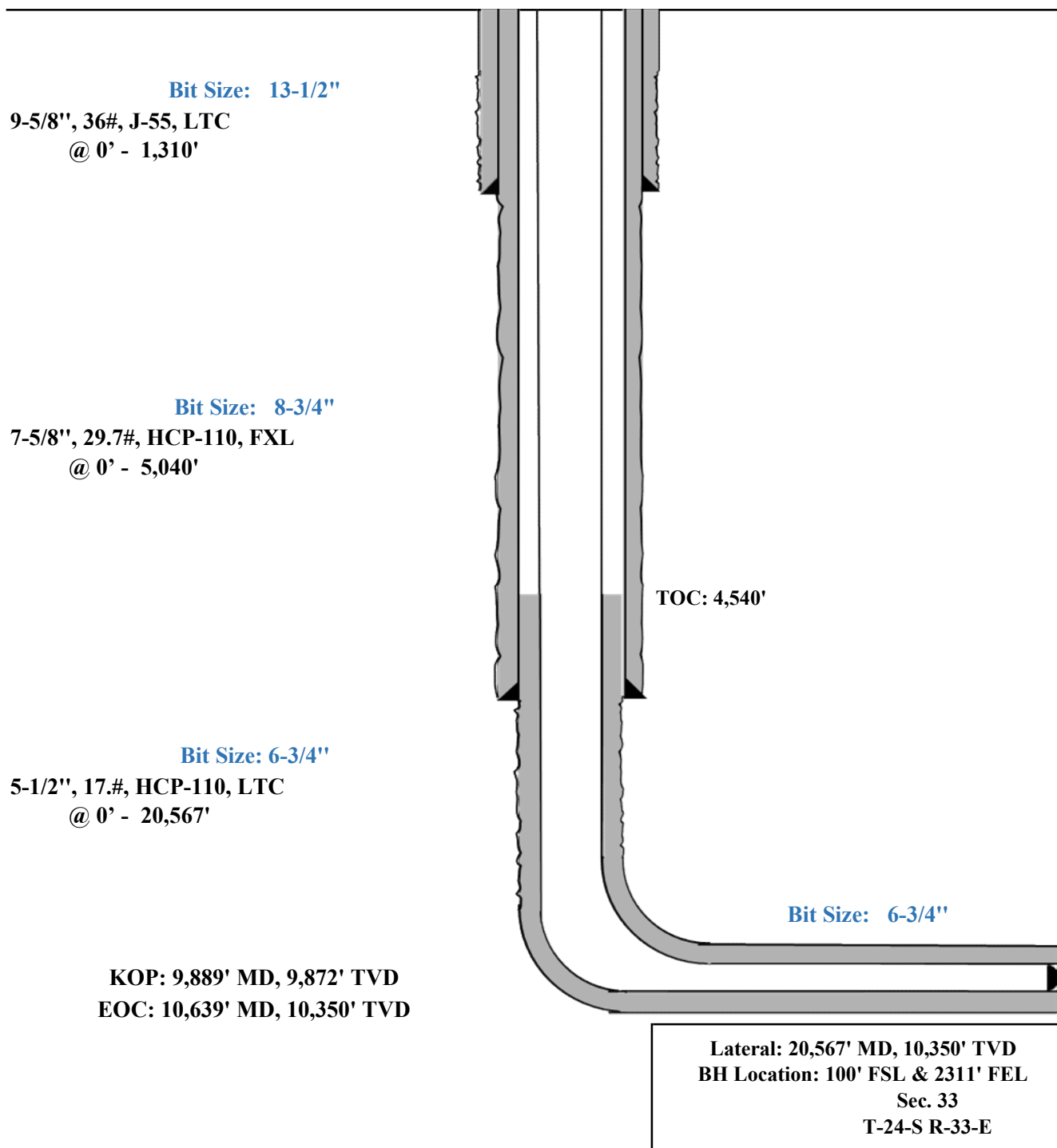


Convoy 28 State Com #302H  
Lea County, New Mexico  
Proposed Wellbore  
Design A

478' FNL  
2202' FEL  
Section 28  
T-24-S, R-33-E

KB: 3545'  
GL: 3520'

API: 30-025-50193



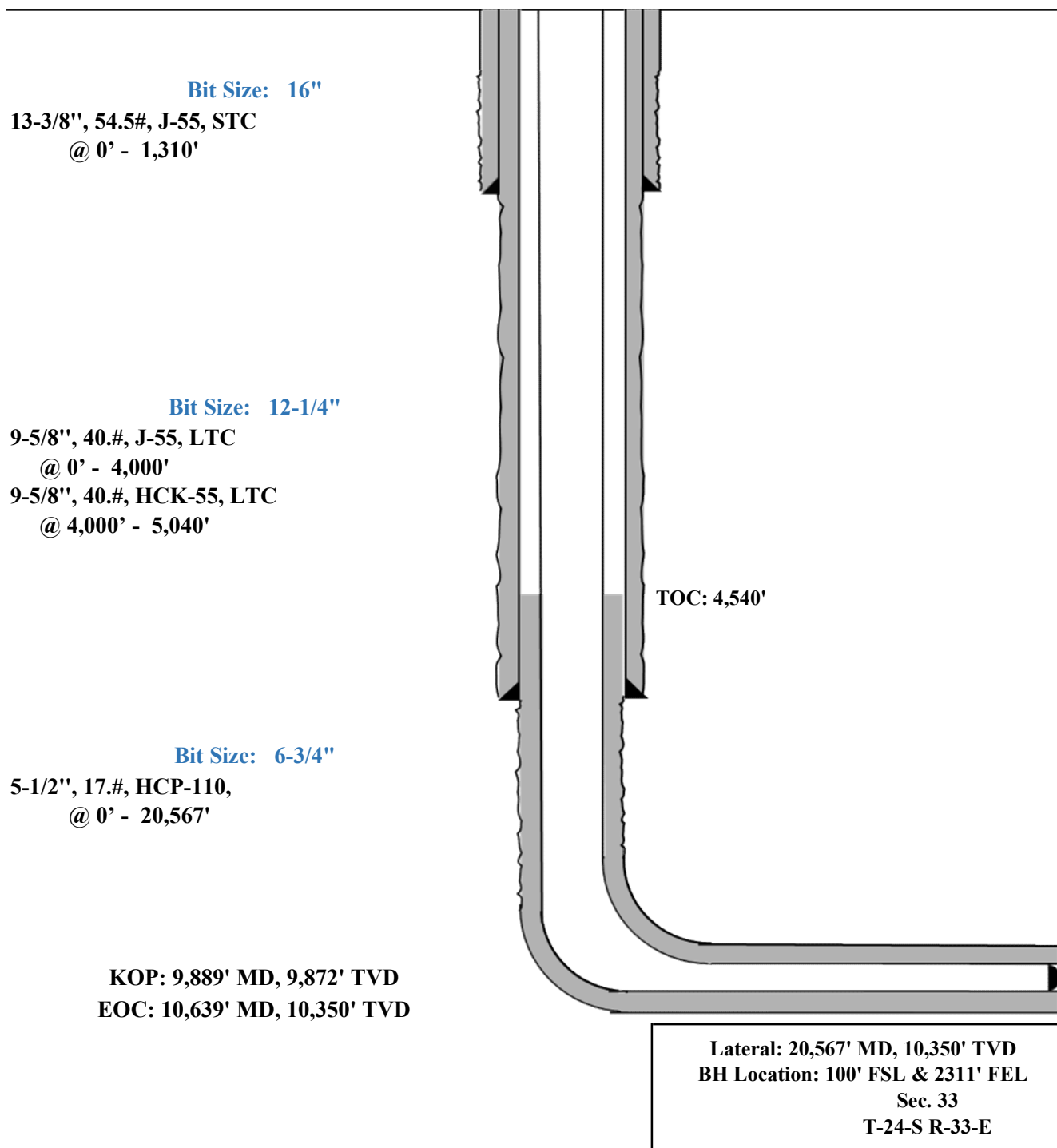


Convoy 28 State Com #302H  
Lea County, New Mexico  
Proposed Wellbore  
Design B

478' FNL  
2202' FEL  
Section 28  
T-24-S, R-33-E

KB: 3545'  
GL: 3520'

API: 30-025-50193





## Convoy 28 State Com #302H

### Permit Information:

Well Name: Convoy 28 State Com #302H

### Location:

SHL: 478' FNL & 2202' FEL, Section 28, T-24-S, R-33-E, Lea Co., N.M.

BHL: 100' FSL & 2311' FEL, Section 33, T-24-S, R-33-E, Lea Co., N.M.

### Design A

### Casing Program:

Hole Size	Interval MD From (ft) To (ft)		Interval TVD From (ft) To (ft)		Csg OD	Weight	Grade	Conn
13-1/2"	0	1,310	0	1,310	9-5/8"	36#	J-55	LTC
8-3/4"	0	5,040	0	4,921	7-5/8"	29.7#	HCP-110	FXL
6-3/4"	0	20,567	0	10,350	5-1/2"	17#	HCP-110	LTC

### Cement Program:

Depth	No. Sacks	Wt. ppg	Yld Ft3/sk	Slurry Description
1,310'	460	13.5	1.73	Class C + 4.0% Bentonite + 0.6% CD-32 + 0.5% CaCl <sub>2</sub> + 0.25 lb/sk Cello-Flake (TOC @ Surface)
	90	14.8	1.34	Class C + 0.6% FL-62 + 0.25 lb/sk Cello-Flake + 0.2% Sodium Metasilicate
5,040'	80	14.2	1.11	Tail: Class C + 10% NaCl + 6% Bentonite Gel + 3% MagOx (TOC @ Surface)
	1000	14.8	1.5	Lead: Class C + 3% CaCl <sub>2</sub> + 3% Microbond (TOC @ 4,540')
20,567'	460	11.0	3.21	Lead: Class C + 3% CaCl <sub>2</sub> + 3% Microbond (TOC @ 4,540')
	750	13.2	1.52	Tail: Class H + 5% NEX-020 + 0.2% NAC-102 + 0.15% NAS-725 + 0.5% NFL-549 + 0.2% NFP-703 + 1% NBE-737 + 0.3% NRT-241

### Mud Program:

Depth	Type	Weight (ppg)	Viscosity	Water Loss
0 – 1,310'	Fresh - Gel	8.6-8.8	28-34	N/c
1,310' – 5,040'	Brine	8.6-8.8	28-34	N/c
5,040' – 20,567' Lateral	Oil Base	8.8-9.5	58-68	N/c - 6



## Convoy 28 State Com #302H

**Design B****CASING PROGRAM**

Hole Size	Interval MD		Interval TVD		Csg OD	Weight	Grade	Conn
	From (ft)	To (ft)	From (ft)	To (ft)				
16"	0	1,310	0	1,310	13-3/8"	54.5#	J-55	STC
12-1/4"	0	4,000	0	3,984	9-5/8"	40#	J-55	LTC
12-1/4"	4000	4,937	3,984	4,921	9-5/8"	40#	HCK-55	LTC
8-3/4"	0	20,567	0	10,350	7-5/8"	29.7#	HCP-110	FXL

**Cementing Program:**

Depth	No. Sacks	Wt. ppg	Yld Ft3/sk	Slurry Description
1,310'	380	13.5	1.73	Class C + 4.0% Bentonite + 0.6% CD-32 + 0.5% CaCl2 + 0.25 lb/sk Cello-Flake (TOC @ Surface)
	80	14.8	1.34	Class C + 0.6% FL-62 + 0.25 lb/sk Cello-Flake + 0.2% Sodium Metasilicate
4,000'	740	14.2	1.11	Tail: Class C + 10% NaCl + 6% Bentonite Gel + 3% MagOx (TOC @ Surface)
	1430	14.8	1.5	Lead: Class C + 3% CaCl2 + 3% Microbond (TOC @ 4,540')
20,567'	760	11.0	3.21	Lead: Class C + 3% CaCl2 + 3% Microbond (TOC @ 4,540')
	2770	13.2	1.52	Tail: Class H + 5% NEX-020 + 0.2% NAC-102 + 0.15% NAS-725 + 0.5% NFL-549 + 0.2% NFP-703 + 1% NBE-737 + 0.3% NRT-241

**Mud Program:**

Depth	Type	Weight (ppg)	Viscosity	Water Loss
0 – 1,310'	Fresh - Gel	8.6-8.8	28-34	N/c
1,310' – 5,040'	Brine	8.6-8.8	28-34	N/c
5,040' – 20,567' Lateral	Oil Base	8.8-9.5	58-68	N/c - 6



## Convoy 28 State Com #302H

### Hydrogen Sulfide Plan Summary

A. All personnel shall receive proper H<sub>2</sub>S training in accordance with Onshore Order III.C.3.a.

B. Briefing Area: two perpendicular areas will be designated by signs and readily accessible.

C. Required Emergency Equipment:

■ Well control equipment

- a. Flare line 150' from wellhead to be ignited by flare gun.
- b. Choke manifold with a remotely operated choke.
- c. Mud/gas separator

■ Protective equipment for essential personnel.

Breathing apparatus:

- a. Rescue Packs (SCBA) — 1 unit shall be placed at each breathing area, 2 shall be stored in the safety trailer.
- b. Work/Escape packs — 4 packs shall be stored on the rig floor with sufficient air hose not to restrict work activity.
- c. Emergency Escape Packs — 4 packs shall be stored in the doghouse for emergency evacuation.

Auxiliary Rescue Equipment:

- a. Stretcher
- b. Two OSHA full body harness
- c. 100 ft 5/8 inch OSHA approved rope
- d. 1-20# class ABC fire extinguisher

■ H<sub>2</sub>S detection and monitoring equipment:

The stationary detector with three sensors will be placed in the upper dog house if equipped, set to visually alarm @ 10 ppm and audible @ 14 ppm. Calibrate a minimum of every 30 days or as needed. The sensors will be placed in the following places: Rig floor / Bell nipple / End of flow line or where well bore fluid is being discharged.

(Gas sample tubes will be stored in the safety trailer)

■ Visual warning systems.

- a. One color code condition sign will be placed at the entrance to the site reflecting the possible conditions at the site.
- b. A colored condition flag will be on display, reflecting the current condition at the site at the time.
- c. Two wind socks will be placed in strategic locations, visible from all angles.



## Convoy 28 State Com #302H

### ■ Mud program:

The mud program has been designed to minimize the volume of H<sub>2</sub>S circulated to surface. The operator will have the necessary mud products to minimize hazards while drilling in H<sub>2</sub>S bearing zones.

### ■ Metallurgy:

All drill strings, casings, tubing, wellhead, blowout preventer, drilling spool, kill lines, choke manifold and lines, and valves shall be suitable for H<sub>2</sub>S service.

### ■ Communication:

Communication will be via cell phones and land lines where available.





**Convoy 28 State Com #302H  
Emergency Assistance Telephone List**

**PUBLIC SAFETY:** **911 or**

---

Lea County Sheriff's Department		(575) 396-3611
---------------------------------	--	----------------

Rod Coffman

Fire Department:

Carlsbad		(575) 885-3125
----------	--	----------------

Artesia		(575) 746-5050
---------	--	----------------

Hospitals:

Carlsbad		(575) 887-4121
----------	--	----------------

Artesia		(575) 748-3333
---------	--	----------------

Hobbs		(575) 392-1979
-------	--	----------------

Dept. of Public Safety/Carlsbad		(575) 748-9718
---------------------------------	--	----------------

Highway Department		(575) 885-3281
--------------------	--	----------------

New Mexico Oil Conservation		(575) 476-3440
-----------------------------	--	----------------

NMOCD Inspection Group - South		(575) 626-0830
--------------------------------	--	----------------

U.S. Dept. of Labor		(575) 887-1174
---------------------	--	----------------

**EOG Resources, Inc.**

---

EOG / Midland	Office	(432) 686-3600
---------------	--------	----------------

**Company Drilling Consultants:**

---

David Dominique	Cell	(985) 518-5839
-----------------	------	----------------

Mike Vann	Cell	(817) 980-5507
-----------	------	----------------

**Drilling Engineer**

---

Esteban Del Valle	Cell	(432) 269-7063
-------------------	------	----------------

Daniel Moose	Cell	(432) 312-2803
--------------	------	----------------

**Drilling Manager**

---

Aj Dach	Office	(432) 686-3751
---------	--------	----------------

	Cell	(817) 480-1167
--	------	----------------

**Drilling Superintendent**

---

Jason Townsend	Office	(432) 848-9209
----------------	--------	----------------

	Cell	(210) 776-5131
--	------	----------------

**H&P Drilling**

---

H&P Drilling	Office	(432) 563-5757
--------------	--------	----------------

H&P 651 Drilling Rig	Rig	(903) 509-7131
----------------------	-----	----------------

**Tool Pusher:**

---

Johnathan Craig	Cell	(817) 760-6374
-----------------	------	----------------

Brad Garrett

**Safety:**

---

Brian Chandler (HSE Manager)	Office	(432) 686-3695
------------------------------	--------	----------------

	Cell	(817) 239-0251
--	------	----------------

**District I**  
1625 N. French Dr., Hobbs, NM 88240  
Phone:(575) 393-6161 Fax:(575) 393-0720  
**District II**  
811 S. First St., Artesia, NM 88210  
Phone:(575) 748-1283 Fax:(575) 748-9720  
**District III**  
1000 Rio Brazos Rd., Aztec, NM 87410  
Phone:(505) 334-6178 Fax:(505) 334-6170  
**District IV**  
1220 S. St Francis Dr., Santa Fe, NM 87505  
Phone:(505) 476-3470 Fax:(505) 476-3462

**State of New Mexico**  
**Energy, Minerals and Natural Resources**  
**Oil Conservation Division**  
**1220 S. St Francis Dr.**  
**Santa Fe, NM 87505**

CONDITIONS  
  
Action 116415

CONDITIONS

Operator: EOG RESOURCES INC P.O. Box 2267 Midland, TX 79702	OGRID: 7377
	Action Number: 116415
	Action Type: [C-103] NOI Change of Plans (C-103A)

CONDITIONS

Created By	Condition	Condition Date
pkautz	PREVIOUS COA'S APPLY	6/16/2022