

Submit a Copy To Appropriate District

Office

District I – (575) 393-6161
 1625 N. French Dr., Hobbs, NM 88240
 District II – (575) 748-1283
 811 S. First St., Artesia, NM 88210
 District III – (505) 334-6178
 1000 Rio Brazos Rd., Aztec, NM 87410
 District IV – (505) 476-3460
 1220 S. St. Francis Dr., Santa Fe, NM
 87505

State of New Mexico
 Energy, Minerals and Natural Resources

Form C-103
 Revised July 18, 2013

OIL CONSERVATION DIVISION
 1220 South St. Francis Dr.
 Santa Fe, NM 87505

WELL API NO. 30-025-50194
5. Indicate Type of Lease STATE <input checked="" type="checkbox"/> FEE <input type="checkbox"/>
6. State Oil & Gas Lease No. 317294
7. Lease Name or Unit Agreement Name Convoy 28 State Com
8. Well Number 401H
9. OGRID Number 7377
10. Pool name or Wildcat 96682 Triste Draw; Bone Spring, East

SUNDRY NOTICES AND REPORTS ON WELLS
 (DO NOT USE THIS FORM FOR PROPOSALS TO DRILL OR TO DEEPEN OR PLUG BACK TO A
 DIFFERENT RESERVOIR. USE "APPLICATION FOR PERMIT" (FORM C-101) FOR SUCH
 PROPOSALS.)

1. Type of Well: Oil Well ☒ Gas Well ☐ Other ☐

2. Name of Operator
 EOG Resources, Inc.

3. Address of Operator
 P.O. Box 2267, Midland, Texas 79702

4. Well Location

Unit Letter B : 468 feet from the North line and 1518 feet from the East line
 Section 28 24S Township 33E Range NMNM Lea Lea County County

11. Elevation (Show whether DR, RKB, RT, GR, etc.)
 3525' GR

12. Check Appropriate Box to Indicate Nature of Notice, Report or Other Data

NOTICE OF INTENTION TO:

PERFORM REMEDIAL WORK ☐ PLUG AND ABANDON ☐
 TEMPORARILY ABANDON ☐ CHANGE PLANS ☒
 PULL OR ALTER CASING ☐ MULTIPLE COMPL ☐
 DOWNHOLE COMMINGLE ☐
 CLOSED-LOOP SYSTEM ☐
 OTHER: ☐

SUBSEQUENT REPORT OF:

REMEDIAL WORK ☐ ALTERING CASING ☐
 COMMENCE DRILLING OPNS. ☐ P AND A ☐
 CASING/CEMENT JOB ☐
 OTHER: ☐

13. Describe proposed or completed operations. (Clearly state all pertinent details, and give pertinent dates, including estimated date of starting any proposed work). SEE RULE 19.15.7.14 NMAC. For Multiple Completions: Attach wellbore diagram of proposed completion or recompletion.

EOG respectfully requests an amendment to our approved APD for this well to reflect the following changes:

Change BHL to 100' FSL & 1780' FEL, UL O, Sec 33, T-24S, R-33E

Spud Date:

Rig Release Date:

I hereby certify that the information above is true and complete to the best of my knowledge and belief.

SIGNATURE _____ TITLE Sr Regulatory Specialist DATE 6/13/2022

Type or print name Star Harrell E-mail address: star_harrell@eogresources.com PHONE: 432-848-9161

For State Use Only

APPROVED BY: _____ TITLE _____ DATE _____

Conditions of Approval (if any):

District I
1625 N. French Dr., Hobbs, NM 88240
Phone: (575) 393-6161 Fax: (575) 393-0720
District II
811 S. First St., Artesia, NM 88210
Phone: (575) 748-1283 Fax: (575) 748-9720
District III
1000 Rio Brazos Road, Aztec, NM 87410
Phone: (505) 334-6178 Fax: (505) 334-6170
District IV
1220 S. St. Francis Dr., Santa Fe, NM 87505
Phone: (505) 476-3460 Fax: (505) 476-3462

State of New Mexico
Energy, Minerals & Natural Resources
Department
OIL CONSERVATION DIVISION
1220 South St. Francis Dr.
Santa Fe, NM 87505

FORM C-102

Revised August 1, 2011

Submit one copy to appropriate

District Office

☐ AMENDED REPORT

WELL LOCATION AND ACREAGE DEDICATION PLAT

¹ API Number 30-025-50194	² Pool Code 96682	³ Pool Name Triste Draw; Bone Spring, East
⁴ Property Code 317294	⁵ Property Name CONVOY 28 STATE COM	⁶ Well Number 401H
⁷ OGRID No. 7377	⁸ Operator Name EOG RESOURCES, INC.	⁹ Elevation 3525'

¹⁰Surface Location

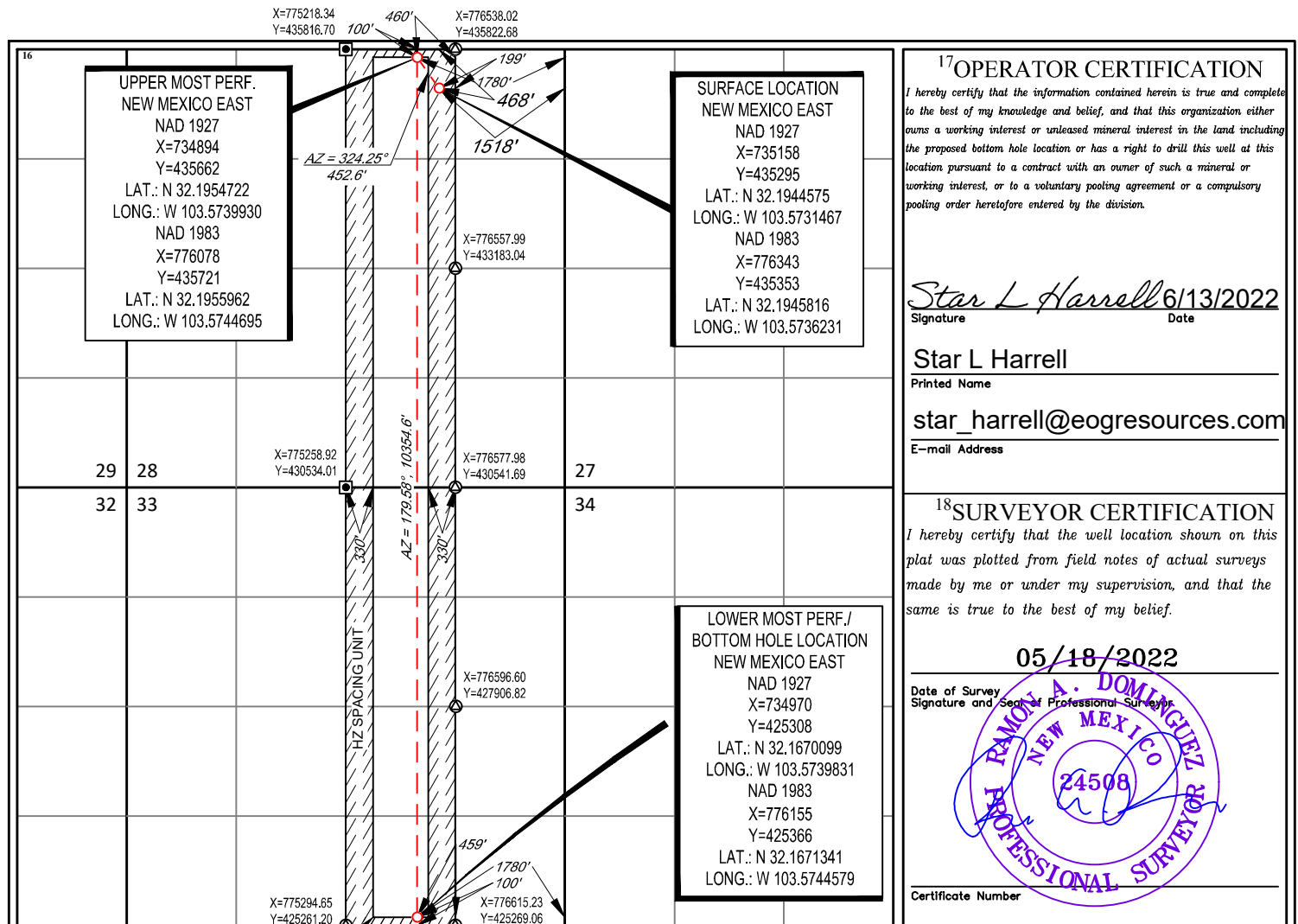
UL or lot no.	Section	Township	Range	Lot Idn	Feet from the	North/South line	Feet from the	East/West line	County
B	28	24-S	33-E	-	468'	NORTH	1518'	EAST	LEA

¹¹Bottom Hole Location If Different From Surface

UL or lot no.	Section	Township	Range	Lot Idn	Feet from the	North/South line	Feet from the	East/West line	County
0	33	24-S	33-E	-	100	SOUTH	1780'	EAST	LEA

¹² Dedicated Acres 320	¹³ Joint or Infill	¹⁴ Consolidation Code	¹⁵ Order No.
---	-------------------------------	----------------------------------	-------------------------

No allowable will be assigned to this completion until all interests have been consolidated or a non-standard unit has been approved by the division.





Convoy 28 State Com #401H
Lea County, New Mexico
Proposed Wellbore
Design A

468' FNL
1518' FEL
Section 28
T-24-S, R-33-E

KB: 3550'
GL: 3525'

API: 30-025-50194

Bit Size: 12-1/4"
9-5/8", 36#, J-55, LTC
@ 0' - 1,310'

Bit Size: 8-3/4"
7-5/8", 29.7#, HCP-110, FXL
@ 0' - 5,040'

Bit Size: 6-3/4"
5-1/2", 17#, HCP-110, LTC
@ 0' - 20,734'

KOP: 10,057' MD, 10,036' TVD
EOC: 10,807' MD, 10,514' TVD

TOC: 4,540'

Bit Size: 6-3/4"

Lateral: 20,734' MD, 10,514' TVD
BH Location: 100' FSL & 1780' FEL
Sec. 33
T-24-S R-33-E



Convoy 28 State Com #401H
Lea County, New Mexico
Proposed Wellbore
Design B

468' FNL
1518' FEL
Section 28
T-24-S, R-33-E

KB: 3550'
GL: 3525'

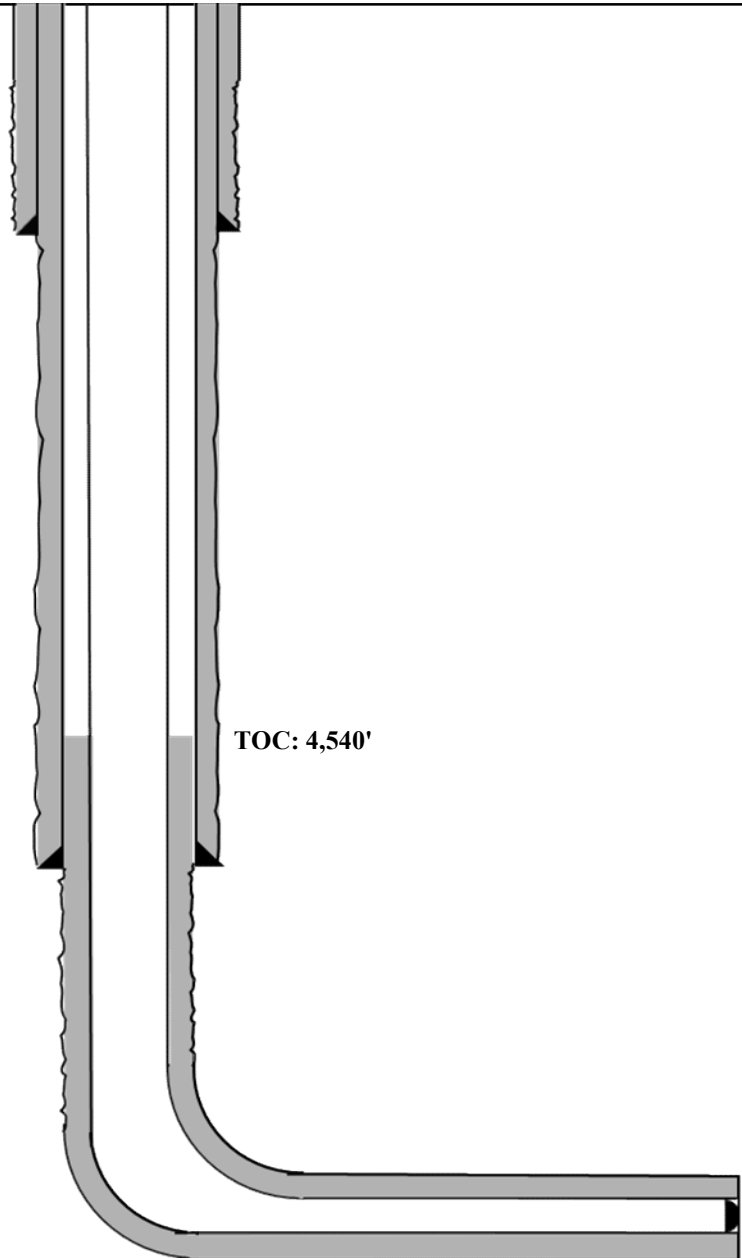
API: 30-025-50194

Bit Size: 16"
13-3/8", 54.5#, J-55, STC
@ 0' - 1,310'

Bit Size: 12-1/4"
9-5/8", 40#, J-55, LTC
@ 0' - 4,000'
9-5/8", 40#, HCK-55, LTC
@ 4,000' - 5,040'

Bit Size: 6-3/4"
5-1/2", 17#, HCP-110,
@ 0' - 20,734'

KOP: 10,057' MD, 10,036' TVD
EOC: 10,807' MD, 10,514' TVD



Lateral: 20,734' MD, 10,514' TVD
BH Location: 100' FSL & 1780' FEL
Sec. 33
T-24-S R-33-E



Convoy 28 State Com #401H

Permit Information:

Well Name: Convoy 28 State Com #401H

Location:

SHL: 468' FNL & 1518' FEL, Section 28, T-24-S, R-33-E, Lea Co., N.M.

BHL: 100' FSL & 1780' FEL, Section 33, T-24-S, R-33-E, Lea Co., N.M.

Design A

Casing Program:

Hole Size	Interval MD From (ft) To (ft)		Interval TVD From (ft) To (ft)		Csg OD	Weight	Grade	Conn
12-1/4"	0	1,310	0	1,310	9-5/8"	36#	J-55	LTC
8-3/4"	0	5,040	0	4,922	7-5/8"	29.7#	HCP-110	FXL
6-3/4"	0	20,734	0	10,514	5-1/2"	17#	HCP-110	LTC

Cement Program:

Depth	No. Sacks	Wt. ppg	Yld Ft3/sk	Slurry Description
1,310'	340	13.5	1.73	Class C + 4.0% Bentonite + 0.6% CD-32 + 0.5% CaCl ₂ + 0.25 lb/sk Cello-Flake (TOC @ Surface)
	60	14.8	1.34	Class C + 0.6% FL-62 + 0.25 lb/sk Cello-Flake + 0.2% Sodium Metasilicate
5,040'	80	14.2	1.11	Tail: Class C + 10% NaCl + 6% Bentonite Gel + 3% MagOx (TOC @ Surface)
	1000	14.8	1.5	Lead: Class C + 3% CaCl ₂ + 3% Microbond (TOC @ 4,540')
20,734'	470	11.0	3.21	Lead: Class C + 3% CaCl ₂ + 3% Microbond (TOC @ 4,540')
	750	13.2	1.52	Tail: Class H + 5% NEX-020 + 0.2% NAC-102 + 0.15% NAS-725 + 0.5% NFL-549 + 0.2% NFP-703 + 1% NBE-737 + 0.3% NRT-241

Mud Program:

Depth	Type	Weight (pp)	Viscosity	Water Loss
0 – 1,310'	Fresh - Gel	8.6-8.8	28-34	N/c
1,310' – 5,040'	Brine	8.6-8.8	28-34	N/c
5,040' – 20,734' Lateral	Oil Base	8.8-9.5	58-68	N/c - 6



Convoy 28 State Com #401H

Design B**CASING PROGRAM**

Hole Size	Interval MD		Interval TVD		Csg OD	Weight	Grade	Conn
	From (ft)	To (ft)	From (ft)	To (ft)				
16"	0	1,310	0	1,310	13-3/8"	54.5#	J-55	STC
12-1/4"	0	4,000	0	3,985	9-5/8"	40#	J-55	LTC
12-1/4"	4000	4,937	3,985	4,922	9-5/8"	40#	HCK-55	LTC
8-3/4"	0	20,734	0	10,514	7-5/8"	29.7#	HCP-110	FXL

Cementing Program:

Depth	No. Sacks	Wt. ppg	Yld Ft3/sk	Slurry Description
1,310'	380	13.5	1.73	Class C + 4.0% Bentonite + 0.6% CD-32 + 0.5% CaCl2 + 0.25 lb/sk Cello-Flake (TOC @ Surface)
	80	14.8	1.34	Class C + 0.6% FL-62 + 0.25 lb/sk Cello-Flake + 0.2% Sodium Metasilicate
4,000'	760	14.2	1.11	Tail: Class C + 10% NaCl + 6% Bentonite Gel + 3% MagOx (TOC @ Surface)
	1430	14.8	1.5	Lead: Class C + 3% CaCl2 + 3% Microbond (TOC @ 4,540')
20,734'	780	11.0	3.21	Lead: Class C + 3% CaCl2 + 3% Microbond (TOC @ 4,540')
	2770	13.2	1.52	Tail: Class H + 5% NEX-020 + 0.2% NAC-102 + 0.15% NAS-725 + 0.5% NFL-549 + 0.2% NFP-703 + 1% NBE-737 + 0.3% NRT-241

Mud Program:

Depth	Type	Weight (ppg)	Viscosity	Water Loss
0 – 1,310'	Fresh - Gel	8.6-8.8	28-34	N/c
1,310' – 5,040'	Brine	8.6-8.8	28-34	N/c
5,040' – 20,734' Lateral	Oil Base	8.8-9.5	58-68	N/c - 6



Convoy 28 State Com #401H

Hydrogen Sulfide Plan Summary

A. All personnel shall receive proper H₂S training in accordance with Onshore Order III.C.3.a.

B. Briefing Area: two perpendicular areas will be designated by signs and readily accessible.

C. Required Emergency Equipment:

■ Well control equipment

- a. Flare line 150' from wellhead to be ignited by flare gun.
- b. Choke manifold with a remotely operated choke.
- c. Mud/gas separator

■ Protective equipment for essential personnel.

Breathing apparatus:

- a. Rescue Packs (SCBA) — 1 unit shall be placed at each breathing area, 2 shall be stored in the safety trailer.
- b. Work/Escape packs — 4 packs shall be stored on the rig floor with sufficient air hose not to restrict work activity.
- c. Emergency Escape Packs — 4 packs shall be stored in the doghouse for emergency evacuation.

Auxiliary Rescue Equipment:

- a. Stretcher
- b. Two OSHA full body harness
- c. 100 ft 5/8 inch OSHA approved rope
- d. 1-20# class ABC fire extinguisher

■ H₂S detection and monitoring equipment:

The stationary detector with three sensors will be placed in the upper dog house if equipped, set to visually alarm @ 10 ppm and audible @ 14 ppm. Calibrate a minimum of every 30 days or as needed. The sensors will be placed in the following places: Rig floor / Bell nipple / End of flow line or where well bore fluid is being discharged.

(Gas sample tubes will be stored in the safety trailer)

■ Visual warning systems.

- a. One color code condition sign will be placed at the entrance to the site reflecting the possible conditions at the site.
- b. A colored condition flag will be on display, reflecting the current condition at the site at the time.
- c. Two wind socks will be placed in strategic locations, visible from all angles.



Convoy 28 State Com #401H

■ Mud program:

The mud program has been designed to minimize the volume of H₂S circulated to surface. The operator will have the necessary mud products to minimize hazards while drilling in H₂S bearing zones.

■ Metallurgy:

All drill strings, casings, tubing, wellhead, blowout preventer, drilling spool, kill lines, choke manifold and lines, and valves shall be suitable for H₂S service.

■ Communication:

Communication will be via cell phones and land lines where available.



**Convoy 28 State Com #401H
Emergency Assistance Telephone List**

PUBLIC SAFETY: **911 or**

Lea County Sheriff's Department		(575) 396-3611
---------------------------------	--	----------------

Rod Coffman

Fire Department:

Carlsbad		(575) 885-3125
----------	--	----------------

Artesia		(575) 746-5050
---------	--	----------------

Hospitals:

Carlsbad		(575) 887-4121
----------	--	----------------

Artesia		(575) 748-3333
---------	--	----------------

Hobbs		(575) 392-1979
-------	--	----------------

Dept. of Public Safety/Carlsbad		(575) 748-9718
---------------------------------	--	----------------

Highway Department		(575) 885-3281
--------------------	--	----------------

New Mexico Oil Conservation		(575) 476-3440
-----------------------------	--	----------------

NMOCD Inspection Group - South		(575) 626-0830
--------------------------------	--	----------------

U.S. Dept. of Labor		(575) 887-1174
---------------------	--	----------------

EOG Resources, Inc.

EOG / Midland	Office	(432) 686-3600
---------------	--------	----------------

Company Drilling Consultants:

David Dominique	Cell	(985) 518-5839
-----------------	------	----------------

Mike Vann	Cell	(817) 980-5507
-----------	------	----------------

Drilling Engineer

Esteban Del Valle	Cell	(432) 269-7063
-------------------	------	----------------

Daniel Moose	Cell	(432) 312-2803
--------------	------	----------------

Drilling Manager

Aj Dach	Office	(432) 686-3751
---------	--------	----------------

	Cell	(817) 480-1167
--	------	----------------

Drilling Superintendent

Jason Townsend	Office	(432) 848-9209
----------------	--------	----------------

	Cell	(210) 776-5131
--	------	----------------

H&P Drilling

H&P Drilling	Office	(432) 563-5757
--------------	--------	----------------

H&P 651 Drilling Rig	Rig	(903) 509-7131
----------------------	-----	----------------

Tool Pusher:

Johnathan Craig	Cell	(817) 760-6374
-----------------	------	----------------

Brad Garrett

Safety:

Brian Chandler (HSE Manager)	Office	(432) 686-3695
------------------------------	--------	----------------

	Cell	(817) 239-0251
--	------	----------------

District I
1625 N. French Dr., Hobbs, NM 88240
Phone:(575) 393-6161 Fax:(575) 393-0720
District II
811 S. First St., Artesia, NM 88210
Phone:(575) 748-1283 Fax:(575) 748-9720
District III
1000 Rio Brazos Rd., Aztec, NM 87410
Phone:(505) 334-6178 Fax:(505) 334-6170
District IV
1220 S. St Francis Dr., Santa Fe, NM 87505
Phone:(505) 476-3470 Fax:(505) 476-3462

State of New Mexico
Energy, Minerals and Natural Resources
Oil Conservation Division
1220 S. St Francis Dr.
Santa Fe, NM 87505

CONDITIONS

Action 116470

CONDITIONS

Operator: EOG RESOURCES INC P.O. Box 2267 Midland, TX 79702	OGRID: 7377
	Action Number: 116470
	Action Type: [C-103] NOI Change of Plans (C-103A)

CONDITIONS

Created By	Condition	Condition Date
pkautz	PREVIOUS COA'S APPLY	6/16/2022