

Office
 District I – (575) 393-6161
 1625 N. French Dr., Hobbs, NM 88240
 District II – (575) 748-1283
 811 S. First St., Artesia, NM 88210
 District III – (505) 334-6178
 1000 Rio Brazos Rd., Aztec, NM 87410
 District IV – (505) 476-3460
 1220 S. St. Francis Dr., Santa Fe, NM
 87505

State of New Mexico
 Energy, Minerals and Natural Resources

Form C-103
 Revised July 18, 2013

OIL CONSERVATION DIVISION
 1220 South St. Francis Dr.
 Santa Fe, NM 87505

SUNDRY NOTICES AND REPORTS ON WELLS (DO NOT USE THIS FORM FOR PROPOSALS TO DRILL OR TO DEEPEN OR PLUG BACK TO A DIFFERENT RESERVOIR. USE "APPLICATION FOR PERMIT" (FORM C-101) FOR SUCH PROPOSALS.)		WELL API NO. 30-025-44221
1. Type of Well: Oil Well <input type="checkbox"/> Gas Well <input type="checkbox"/> Other MISC		5. Indicate Type of Lease STATE <input checked="" type="checkbox"/> FEE <input type="checkbox"/>
2. Name of Operator MORNINGSTAR OPERATING LLC		6. State Oil & Gas Lease No.
3. Address of Operator 400 W 7TH ST, FORT WORTH, TX 76102		7. Lease Name or Unit Agreement Name VACUUM GRAYBURG SA UNIT
4. Well Location Unit Letter <u>N</u> : <u>1297</u> feet from the <u>S</u> line and <u>2463</u> feet from the <u>W</u> line Section <u>1</u> Township <u>18S</u> Range <u>34E</u> NMPM County <u>LEA</u>		8. Well Number 19R
11. Elevation (Show whether DR, RKB, RT, GR, etc.) 3899 GL		9. OGRID Number 330132
		10. Pool name or Wildcat VACUUM; GRAYBURG-SAN ANDRES

12. Check Appropriate Box to Indicate Nature of Notice, Report or Other Data

NOTICE OF INTENTION TO: PERFORM REMEDIAL WORK <input type="checkbox"/> PLUG AND ABANDON <input type="checkbox"/> TEMPORARILY ABANDON <input type="checkbox"/> CHANGE PLANS <input type="checkbox"/> PULL OR ALTER CASING <input type="checkbox"/> MULTIPLE COMPL <input type="checkbox"/> DOWNHOLE COMMINGLE <input type="checkbox"/> CLOSED-LOOP SYSTEM <input type="checkbox"/> OTHER: <input type="checkbox"/>		SUBSEQUENT REPORT OF: REMEDIAL WORK <input type="checkbox"/> ALTERING CASING <input type="checkbox"/> COMMENCE DRILLING OPNS. <input type="checkbox"/> P AND A <input type="checkbox"/> CASING/CEMENT JOB <input type="checkbox"/> OTHER: TA STATUS EXTENSION-MIT <input checked="" type="checkbox"/>	
--	--	---	--

13. Describe proposed or completed operations. (Clearly state all pertinent details, and give pertinent dates, including estimated date of starting any proposed work). SEE RULE 19.15.7.14 NMAC. For Multiple Completions: Attach wellbore diagram of proposed completion or recompletion.

MorningStar Operating LLC requests TA Status Extension.

Attached is a current WBD and passing MIT: START 580 psi, END 580 psi

A passing Bradenhead Test has also been submitted.

Spud Date:

12/24/2017

Rig Release D

FINAL TA STATUS- EXTENSION
 Approval of TA EXPIRES: 6/1/27
 Well needs to be **PLUGGED OR RETURNED**
 to **PRODUCTION**
 BY THE DATE STATED ABOVE: X 7

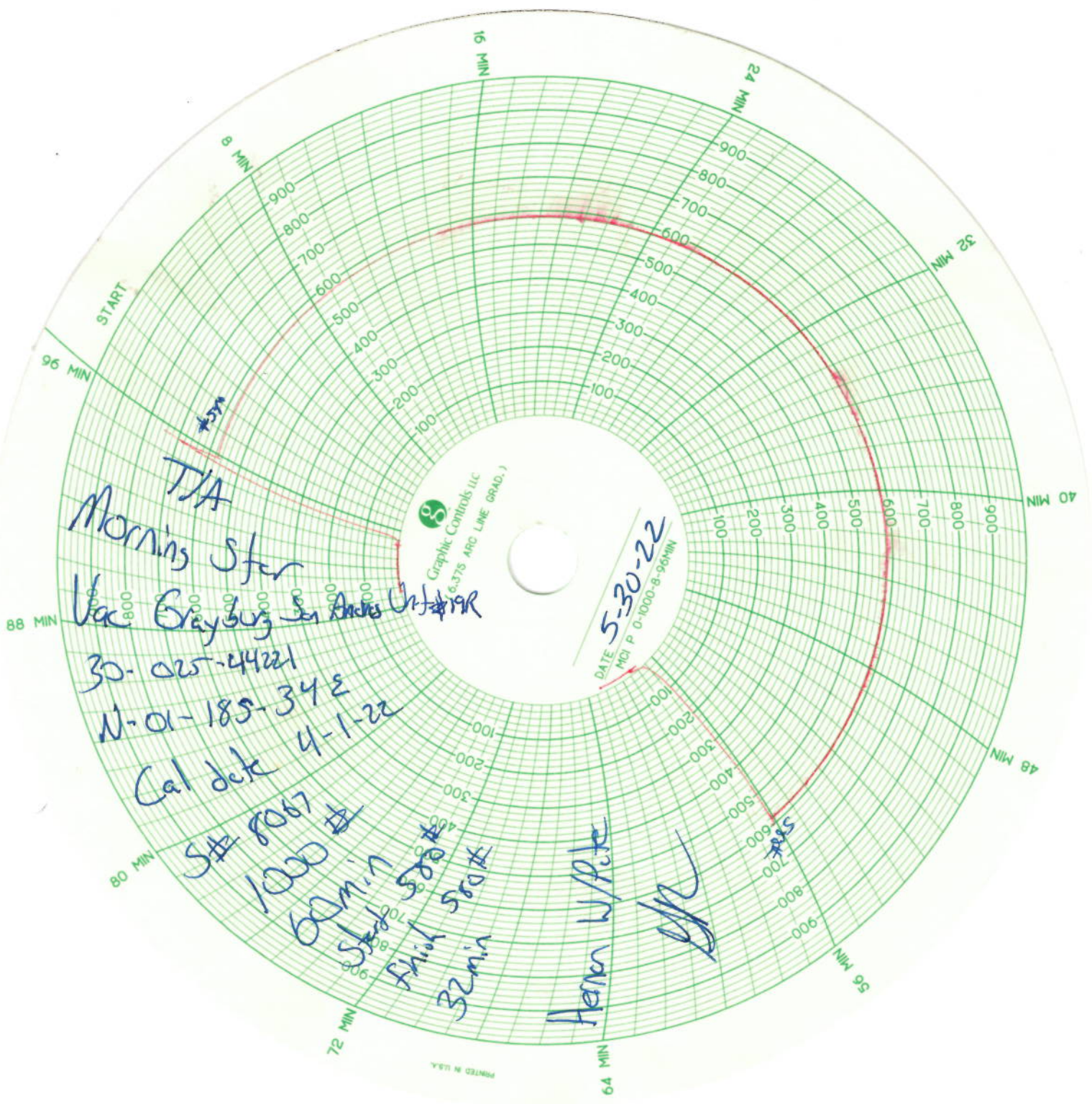
I hereby certify that the information above is true and complete to the best of my knowledge and belief.

SIGNATURE Connie Blaylock TITLE REGULATORY ANALYST DATE 06/13/2022

Type or print name CONNIE BLAYLOCK E-mail address: cblaylock@mspartners.com PHONE: 817-334-7882

For State Use Only

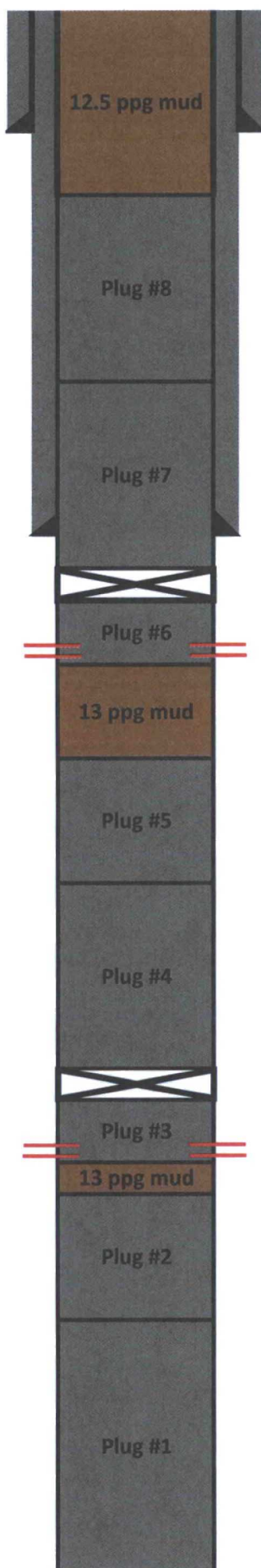
APPROVED BY: Kerry Fortner TITLE Compliance Officer A DATE 6/21/22
 Conditions of Appro



Vacuum Grayburg San Andres Unit 19R WBD

Lea County, NM

30-025-44221



20" Conductor Set at 100'

13-3/8", 54.5 ppf, J-55, STC at 478'

Balanced cement plug 675' - 1,163'

42 bbls, Class C, 14.8 ppg cement - 1/30/18

Pressure tested to 1,300 psi for 15 minutes - 1/30/18

Balanced cement plug 1,163' - 1,590'

38 bbls, Class C, 14.8 ppg cement - 1/30/18

Tagged 1/30/18 @ 1,163' with 10K and pumps on

9-5/8", 43.5 ppf, L-80, LTC at 1,501'

TAM single set packer w/ CRK @ 1,590' - 1/29/18

Perforations 1,620'-1,630'; 5 SPF, -5/0/5 phasing - 1/29/18

Squeezed perms with 38.8 bbls, Class C, 14.8 ppg cement- 1/29/18

Salado @ 1,686'

Operational cement plug 1,750' - 2,250'

75 bbls, Class C, 14.8 ppg cement - 1/29/18

Balanced cement plug 2,225' - 2,788'

105 bbls, Class C, 14.8 ppg cement - 1/27/18

Tagged 1/28/18 @ 2,225' with 10K and pumps on

Yates @ 2,773'

TAM single set packer w/ CRK @ 2,788' - 1/27/18

Perforations 2,818'-2,828'; 5 SPF, -5/0/5 phasing - 1/26/18

Squeezed perms with 21 bbls, Class C, 14.8 ppg cement- 1/27/18

Operational cement plug 2,882' - 3,480'

37 bbls, Class C, 14.8 ppg cement - 1/25/18

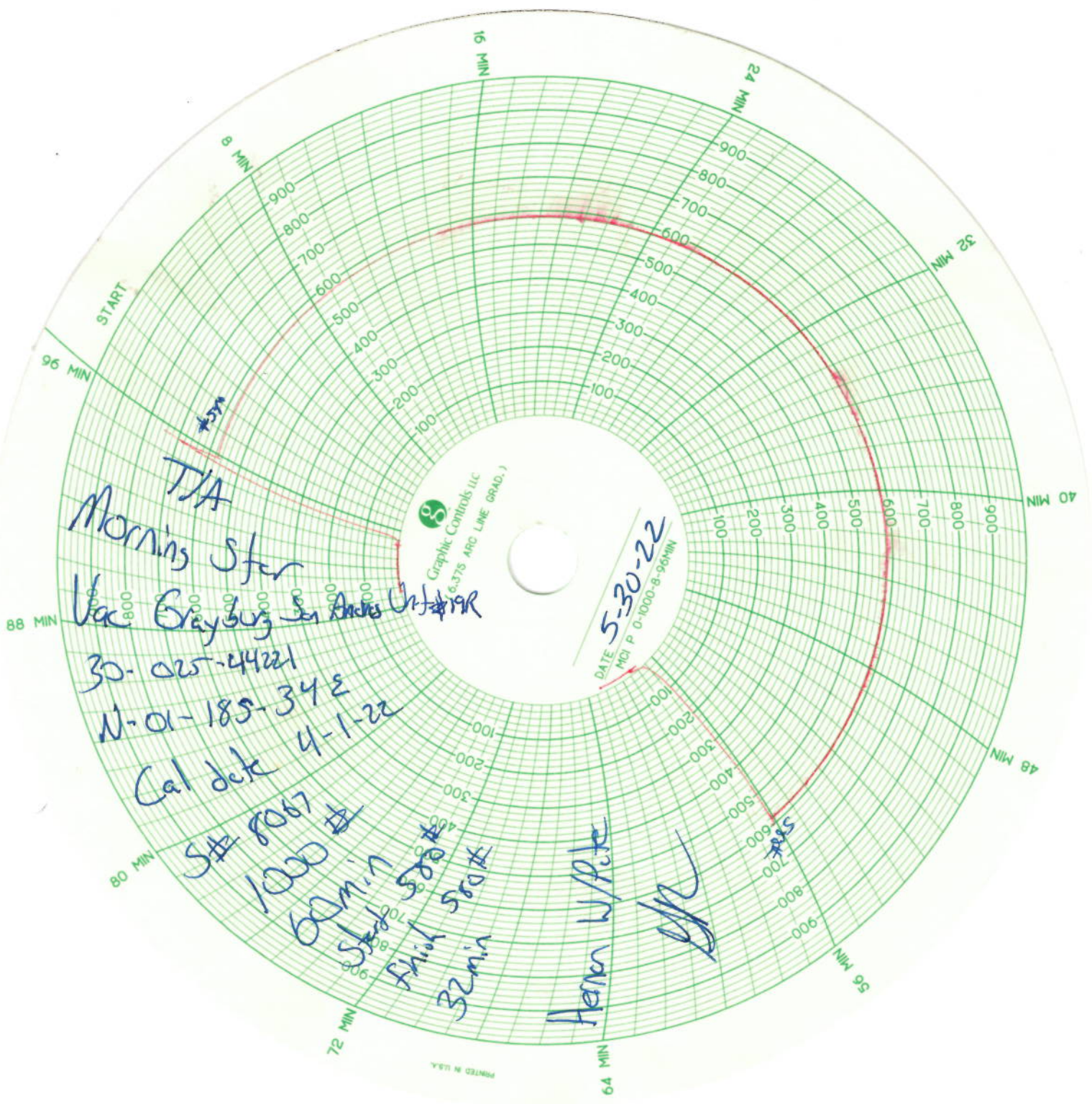
Balanced cement plug 3480' - 4208'

56 bbls, Class C, 14.8 ppg cement

Tagged 1/25/18 @ 3,480' with 10K and pumps on

Grayburg @ 3,991'

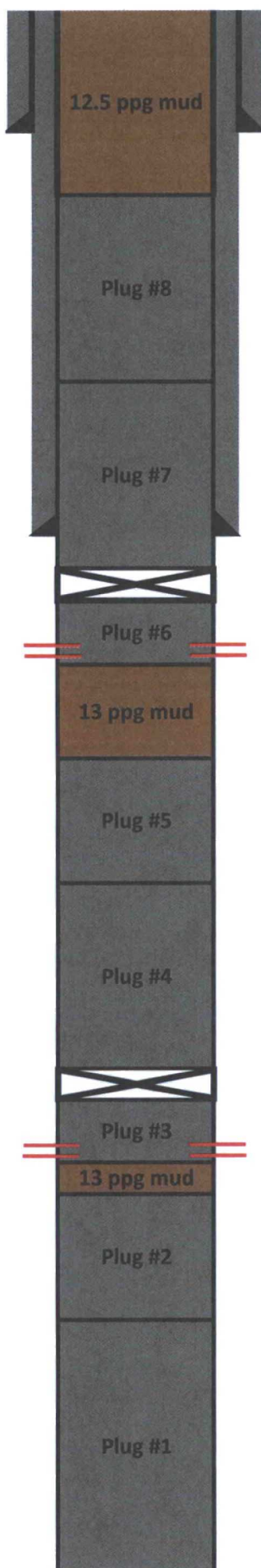
8-1/2" TD @ 4,208'



Vacuum Grayburg San Andres Unit 19R WBD

Lea County, NM

30-025-44221



20" Conductor Set at 100'

13-3/8", 54.5 ppf, J-55, STC at 478'

Balanced cement plug 675' - 1,163'

42 bbls, Class C, 14.8 ppg cement - 1/30/18

Pressure tested to 1,300 psi for 15 minutes - 1/30/18

Balanced cement plug 1,163' - 1,590'

38 bbls, Class C, 14.8 ppg cement - 1/30/18

Tagged 1/30/18 @ 1,163' with 10K and pumps on

9-5/8", 43.5 ppf, L-80, LTC at 1,501'

TAM single set packer w/ CRK @ 1,590' - 1/29/18

Perforations 1,620'-1,630'; 5 SPF, -5/0/5 phasing - 1/29/18

Squeezed perms with 38.8 bbls, Class C, 14.8 ppg cement- 1/29/18

Salado @ 1,686'

Operational cement plug 1,750' - 2,250'

75 bbls, Class C, 14.8 ppg cement - 1/29/18

Balanced cement plug 2,225' - 2,788'

105 bbls, Class C, 14.8 ppg cement - 1/27/18

Tagged 1/28/18 @ 2,225' with 10K and pumps on

Yates @ 2,773'

TAM single set packer w/ CRK @ 2,788' - 1/27/18

Perforations 2,818'-2,828'; 5 SPF, -5/0/5 phasing - 1/26/18

Squeezed perms with 21 bbls, Class C, 14.8 ppg cement- 1/27/18

Operational cement plug 2,882' - 3,480'

37 bbls, Class C, 14.8 ppg cement - 1/25/18

Balanced cement plug 3480' - 4208'

56 bbls, Class C, 14.8 ppg cement

Tagged 1/25/18 @ 3,480' with 10K and pumps on

Grayburg @ 3,991'

8-1/2" TD @ 4,208'

District I
1625 N. French Dr., Hobbs, NM 88240
Phone:(575) 393-6161 Fax:(575) 393-0720
District II
811 S. First St., Artesia, NM 88210
Phone:(575) 748-1283 Fax:(575) 748-9720
District III
1000 Rio Brazos Rd., Aztec, NM 87410
Phone:(505) 334-6178 Fax:(505) 334-6170
District IV
1220 S. St Francis Dr., Santa Fe, NM 87505
Phone:(505) 476-3470 Fax:(505) 476-3462

State of New Mexico
Energy, Minerals and Natural Resources
Oil Conservation Division
1220 S. St Francis Dr.
Santa Fe, NM 87505

COMMENTS

Action 116509

COMMENTS

Operator: MorningStar Operating LLC 400 W 7th St Fort Worth, TX 76102	OGRID: 330132
	Action Number: 116509
	Action Type: [C-103] Sub. Temporary Abandonment (C-103U)

COMMENTS

Created By	Comment	Comment Date
plmartinez	DATA ENTRY PM	6/23/2022

District I
1625 N. French Dr., Hobbs, NM 88240
Phone:(575) 393-6161 Fax:(575) 393-0720
District II
811 S. First St., Artesia, NM 88210
Phone:(575) 748-1283 Fax:(575) 748-9720
District III
1000 Rio Brazos Rd., Aztec, NM 87410
Phone:(505) 334-6178 Fax:(505) 334-6170
District IV
1220 S. St Francis Dr., Santa Fe, NM 87505
Phone:(505) 476-3470 Fax:(505) 476-3462

State of New Mexico
Energy, Minerals and Natural Resources
Oil Conservation Division
1220 S. St Francis Dr.
Santa Fe, NM 87505

CONDITIONS

Action 116509

CONDITIONS

Operator: MorningStar Operating LLC 400 W 7th St Fort Worth, TX 76102	OGRID: 330132
	Action Number: 116509
	Action Type: [C-103] Sub. Temporary Abandonment (C-103U)

CONDITIONS

Created By	Condition	Condition Date
kfortner	TA status extended to 6/1/27	6/21/2022