



U.S. Department of the Interior  
BUREAU OF LAND MANAGEMENT

## Sundry Print Report

02/14/2022

Well Name: CBM 14-27-14	Well Location: T27N / R14W / SEC 14 / NENE / 36.58068 / -108.291	County or Parish/State: SAN JUAN / NM
Well Number: 1	Type of Well: CONVENTIONAL GAS WELL	Allottee or Tribe Name: EASTERN NAVAJO
Lease Number: N0G10081773	Unit or CA Name:	Unit or CA Number:
US Well Number: 300453529900X1	Well Status: Abandoned	Operator: NAVAJO NATION OIL & GAS COMPANY

### Subsequent Report

Sundry ID: 2649676

Type of Submission: Subsequent Report

Type of Action: Plug and Abandonment

Date Sundry Submitted: 12/20/2021

Time Sundry Submitted: 10:20

Date Operation Actually Began: 12/16/2021

Actual Procedure: Please find attached the P&A Procedure for the CBM 14-27-14 #1.

### SR Attachments

Actual Procedure

P\_A\_NNOGC\_CBM\_14\_27\_14\_\_1\_20211220101701.pdf

<b>Well Name:</b> CBM 14-27-14	<b>Well Location:</b> T27N / R14W / SEC 14 / NENE / 36.58068 / -108.291	<b>County or Parish/State:</b> SAN JUAN / NM
<b>Well Number:</b> 1	<b>Type of Well:</b> CONVENTIONAL GAS WELL	<b>Allottee or Tribe Name:</b> EASTERN NAVAJO
<b>Lease Number:</b> N0G10081773	<b>Unit or CA Name:</b>	<b>Unit or CA Number:</b>
<b>US Well Number:</b> 300453529900X1	<b>Well Status:</b> Abandoned	<b>Operator:</b> NAVAJO NATION OIL & GAS COMPANY

**Operator Certification**

I certify that the foregoing is true and correct. Title 18 U.S.C. Section 1001 and Title 43 U.S.C. Section 1212, make it a crime for any person knowingly and willfully to make to any department or agency of the United States any false, fictitious or fraudulent statements or representations as to any matter within its jurisdiction. Electronic submission of Sundry Notices through this system satisfies regulations requiring a submission of Form 3160-5 or a Sundry Notice.

**Operator Electronic Signature:** SHAWNA MARTINEZ**Signed on:** DEC 20, 2021 10:20 AM**Name:** NAVAJO NATION OIL & GAS COMPANY**Title:** Regulatory Tech**Street Address:** 332 RD 3100**City:** AZTEC**State:** NM**Phone:** (505) 327-4892**Email address:** SHAWNA@WALSHENG.NET**Field Representative****Representative Name:****Street Address:****City:****State:****Zip:****Phone:****Email address:****BLM Point of Contact****BLM POC Name:** KENNETH G RENNICK**BLM POC Title:** Petroleum Engineer**BLM POC Phone:** 5055647742**BLM POC Email Address:** krennick@blm.gov

## NNOGC

## CBM 14-27-14 #1 P&amp;A Summary

Date Completed

12/16/2021

Plug #	Formation	BLM Pick Formation Top	Perfs	C/CR Depth	Cement Detail	Cement Plug Depths	Plug Position
1	Dakota	5947'	NA	NA	19 sxs Class G Neat (21.9 cf)	6006'-5843'	Inside
2	Gallup	4872'	NA	NA	19 sxs Class G Neat (21.9 cf)	4936'-4773'	Inside
3	Mancos	4013'	N/A	N/A	18 sxs Class G Neat (20.7 cf)	4065'-3911'	Inside
4	Mesaverde	2037'	N/A	N/A	20 sxs Class G Neat (23 cf)	2102'-1930'	Inside
5	Chacra	1637'	N/A	N/A	19 sxs Class G Neat (21.9 cf)	1699'-1536'	Inside
6	PC	1229'	NA	N/A	19 sxs Class G Neat (21.9 cf)	1288'-1125'	Inside
7	Fruitland	913'	N/A	N/A	20 sxs Class G Neat (23 cf)	980'-808'	Inside
8	Kirtland Shale	Surface	NA	N/A	58 sxs Class G Neat (66 cf)	425'-Surface'	Inside

Function test BOP. PT Casing to 500 psi. Casing test good.

PLG #1) Mix and pump 19 sxs, 21.9 cuft Class G Neat from 6006' - 5843'

PLG #2) Mix and pump 19 sxs 21.9 cuft Class G Neat from 4936' - 4773'

PLG #3) Mix and pump 18 sxs, 20.7 cuft, Class G Neat from 4065' - 3911'

PLG #4) Mix and pump 20 sxs, 23 cuft Class G Neat from 2102' to 1930'

PLG #5) Mix and pump 19 sxs, 21.9 cuft, Class G Neat from 1699' to 1536'. Secure well for the night. Crew off location at 1600.

PLG #6) Mix and pump 19 sxs, 21.9 cuft, class G Neat from 1288' to 1125'.

PLG #7) Mix and pump 20sxs, 23 cuft, class G Neat from 980' to 808'.

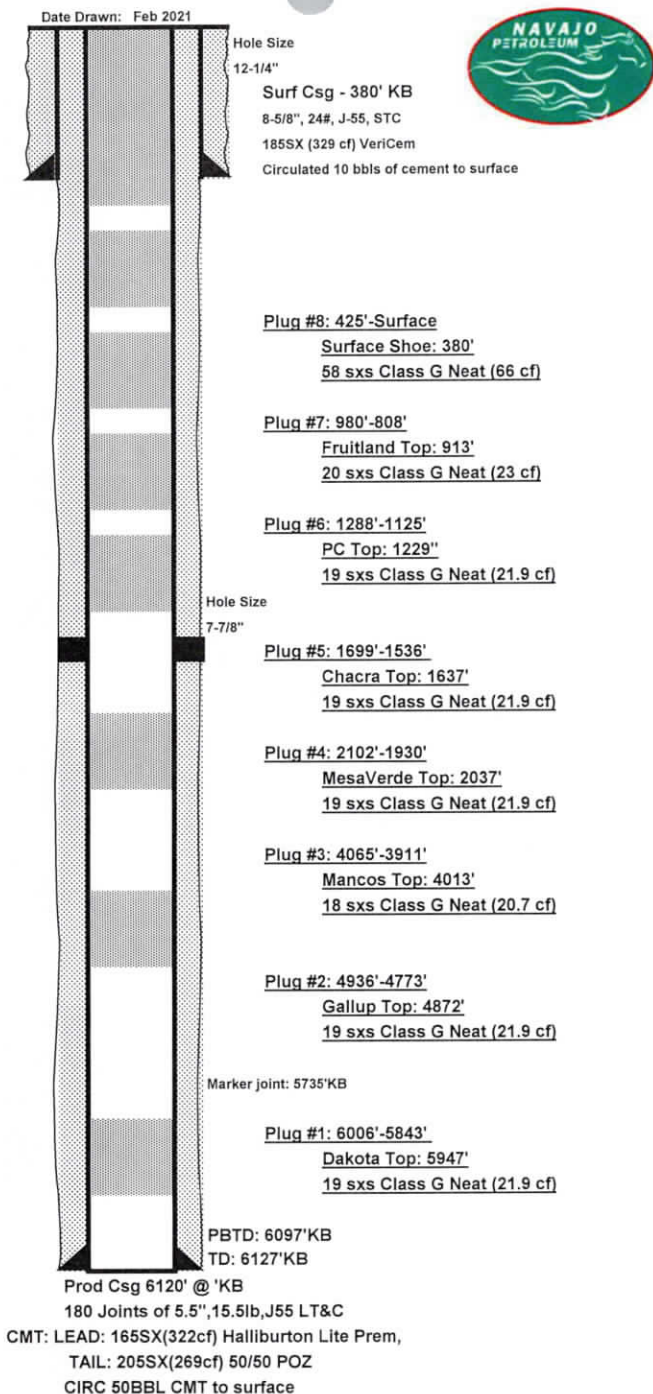
PLG #8) Mix and Pump 58 sxs, 66 cuft, class G Neat 425' to surface. Circulated 1.5 bbls cement out of surface. ND BOP and wash clean. Crew dug out cellar to a depth of 5 ft. Welder cut off wellhead

Check cement level with tank strap. TOC at 31' on both 8-5/8 and 5-1/2 casing strings. Weld marker plate to casing strings. Topped off casing string with 17 sxs, 19.6 cuft class G neat cement.

(36.58068N 108.291W)

Navajo Minerals Inspector Val on location to approve all Operations.

Well/Facility:	CBM 14-24-14 #1	Well Status:	DUC
Operator:	NNOGC	Orig Oper:	NNOGC
Lease/Op Agmt:		Prod Interval:	
Field:	Basin Dakota	API #:	30-045-35299
County:	San Juan	GL/KB:	5984' GL (12' KB)
State:	NM	TD:	6127'
Spud:	12/26/2011	PBTD:	6097'
Comp. Date:		LAT:	36.58068
1st Prod:		LONG:	108.291
Xmas tree:			
Surface Loc:	660' FNL, 661' FEL		
Sec-Twn-Rge:	Section 14, T27N, R14W		
Comments:			

[illegible]

## NNOGC On Site's

March 3, 2021

### Onsite Representatives

Bertha Spencer BIA  
Rachel Dahozy NNOGC  
Sterling Walter Navajo Nation  
Val Juentillie Navajo Nation  
Steven Prince Navajo Nation  
Vanessa Fields Walsh Engineering  
Jimmie McKinney Walsh Engineering

CBM 11-27-14 #15	30-045-35295
CBM 14-27-14 #1	30-045-35299
CBM 29-27-14 #13	30-045-35345
CBM 33-29-14 #6	30-045-35297
CBM 33-29-14 #14	30-045-35296
CBM Pod A 10 H #1	30-045-35342
CBM Pod A 11 G #1	30-045-35335
CBM Pod A 13 K #1	30-045-35336
CBM Pod A 14 D #1	30-045-35334
CBM Pod A 14 J #1	30-045-35333



District I  
1625 N. French Dr., Hobbs, NM 88240  
Phone: (575) 393-6161 Fax: (575) 393-0720  
District II  
811 S. First St., Artesia, NM 88210  
Phone: (575) 748-1283 Fax: (575) 748-9720  
District III  
1000 Rio Brazos Road, Aztec, NM 87410  
Phone: (505) 334-6178 Fax: (505) 334-6170  
District IV  
1220 S. St. Francis Dr., Santa Fe, NM 87505  
Phone: (505) 476-3460 Fax: (505) 476-3462

State of New Mexico  
Energy, Minerals & Natural Resources Department  
OIL CONSERVATION DIVISION  
1220 South St. Francis Dr.  
Santa Fe, NM 87505

Form C-102  
Revised August 1, 2011  
Submit one copy to appropriate  
District Office

☐ AMENDED REPORT

WELL LOCATION AND ACREAGE DEDICATION PLAT

<sup>1</sup> API Number <b>30-045-35299</b>		<sup>2</sup> Pool Code <b>71599</b>	<sup>3</sup> Pool Name <b>Basin Dakota</b>
<sup>4</sup> Property Code <b>38716</b>	<sup>5</sup> Property Name <b>CBM 14-27-14</b>		<sup>6</sup> Well Number <b>1</b>
<sup>7</sup> OGRID No. <b>242841</b>	<sup>8</sup> Operator Name <b>NNOGC Exploration and Production LLC</b>		<sup>9</sup> Elevation <b>5984</b>

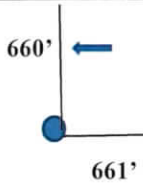
<sup>10</sup> Surface Location

UL or lot no. <b>A</b>	Section <b>14</b>	Township <b>27N</b>	Range <b>14W</b>	Lot Idn	Feet from the <b>660'</b>	North/South line <b>NORTH</b>	Feet from the <b>661'</b>	East/West line <b>EAST</b>	County <b>SAN JUAN</b>
---------------------------	----------------------	------------------------	---------------------	---------	------------------------------	----------------------------------	------------------------------	-------------------------------	---------------------------

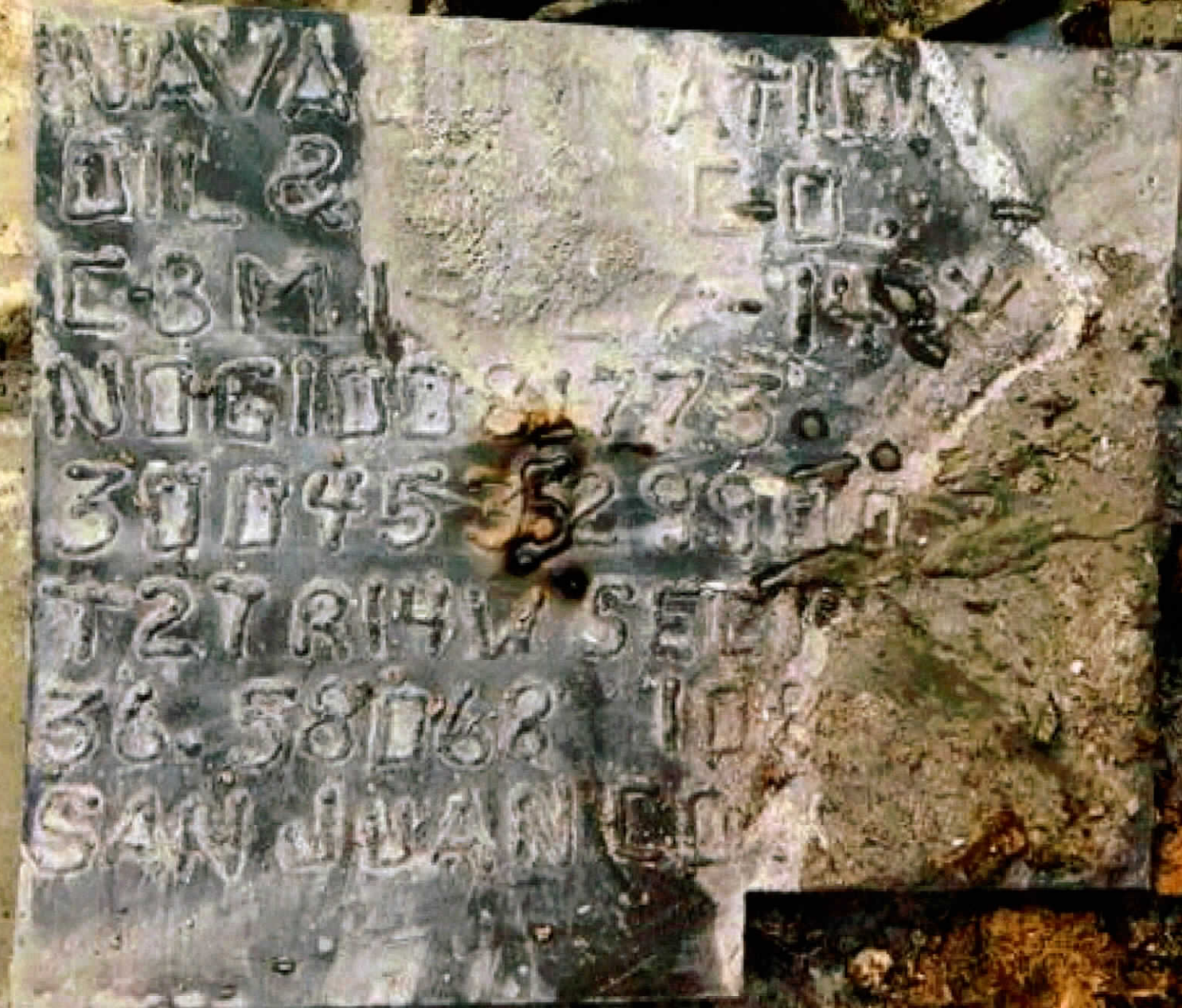
<sup>11</sup> Bottom Hole Location If Different From Surface

UL or lot no.	Section	Township	Range	Lot Idn	Feet from the	North/South line	Feet from the	East/West line	County
<sup>12</sup> Dedicated Acres <b>320</b>	<sup>13</sup> Joint or Infill	<sup>14</sup> Consolidation Code	<sup>15</sup> Order No.						

No allowable will be assigned to this completion until all interests have been consolidated or a non-standard unit has been approved by the division.

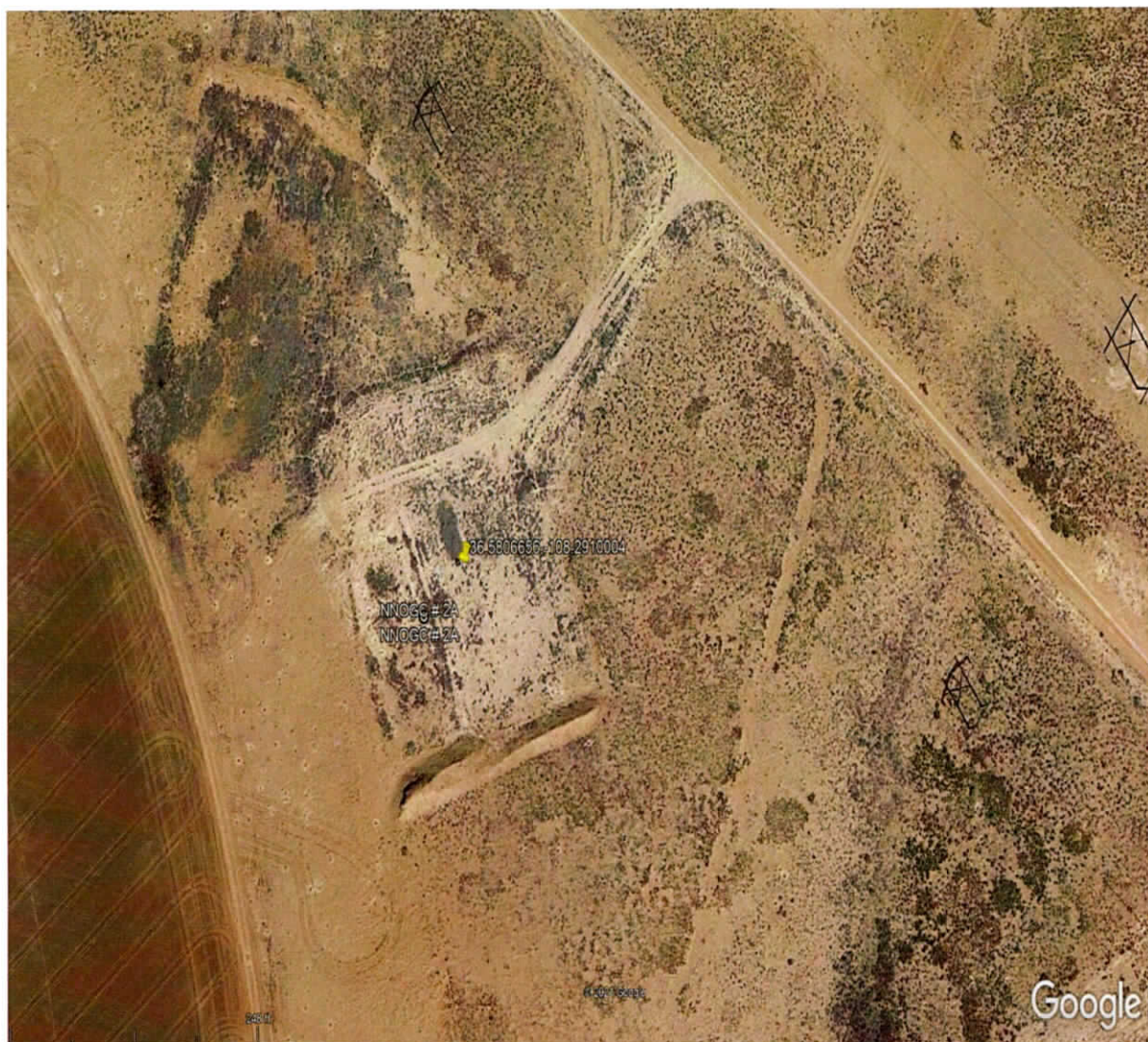
16		In Place P&A Marker	<b><sup>17</sup> OPERATOR CERTIFICATION</b> <i>I hereby certify that the information contained herein is true and complete to the best of my knowledge and belief, and that this organization either owns a working interest or unleased mineral interest in the land including the proposed bottom hole location or has a right to drill this well at this location pursuant to a contract with an owner of such a mineral or working interest, or to a voluntary pooling agreement or a compulsory pooling order heretofore entered by the division.</i>
			<p><i>Shawna Martinez</i> 12-29-21 Signature Date</p> <p>Shawna Martinez Printed Name</p> <p>shawna@walsheng.net E-mail Address</p>
			<b><sup>18</sup> SURVEYOR CERTIFICATION</b> <i>I hereby certify that the well location shown on this plat was plotted from field notes of actual surveys made by me or under my supervision, and that the same is true and correct to the best of my belief.</i>
			<p>Date of Survey</p> <p>Signature and Seal of Professional Surveyor:</p> <p>Certificate Number</p>







CBM 14-27-14 #1 30-045-35299  
36.5806656, -108.2910004



**Onsite Reclamation following P&A of well**

- Abandon all existing lines in place (water, electric, gas).
- Leave road open to access field.
- Contour location to grade.
- Remove rig anchors.
- P&A Marker will be cut 6' below grade surface with a steel plate installed with location coordinates.
- No seeding will be performed in crop area.



UNITED STATES DEPARTMENT OF THE INTERIOR  
BUREAU OF LAND MANAGEMENT  
FARMINGTON DISTRICT OFFICE  
6251 COLLEGE BLVD.  
FARMINGTON, NEW MEXICO 87402

Attachment to notice of  
Intention to Abandon:

Re: Permanent Abandonment  
Well: CBM 14-27-14 #1

CONDITIONS OF APPROVAL

1. Plugging operations authorized are subject to the attached "General Requirements for Permanent Abandonment of Wells on Federal and Indian Lease."

2. Farmington Office is to be notified at least 24 hours before the plugging operations commence (505) 564-7750.

3. The following modifications to your plugging program are to be made:

- a) Set Plug #1 (5847 – 5997) ft. to cover Dakota top. BLM picks top of Dakota at 5947 ft.
- b) Set Plug #2 (4772 - 4922) ft. to cover Gallup top. BLM picks top of Gallup at 4872 ft.
- c) Set Plug #3 (3913 - 4063) ft. to cover the Mancos top. BLM picks top of Mancos at 4013 ft.
- d) Set Plug #4 (1937 - 2087) ft. to cover the Mesaverde top. BLM picks top of Cliff House at 2037 ft.
- e) Set a cement plug (1537 - 1687) ft. to cover the Chacra top. BLM picks top of Chacra at 1637 ft.
- f) Set Plug #5 (1129 - 1279) ft. to cover the Pictured Cliffs top. BLM picks top of Pictured Cliffs at 1229 ft.
- g) Set Plug #6 (813 - 963) ft. to cover the Fruitland top. BLM picks top of Fruitland at 913 ft.
- h) Set Plug #7 380 ft. - surface to cover the surface casing string.

You are also required to place cement excesses per 4.2 and 4.4 of the attached General Requirements.

Office Hours: 7:45 a.m. to 4:30 p.m.

**GENERAL REQUIREMENTS FOR  
PERMANENT ABANDONMENT OF WELLS ON FEDERAL AND INDIAN LEASES  
FARMINGTON FIELD OFFICE**

1.0 The approved plugging plans may contain variances from the following minimum general requirements.

1.1 Modification of the approved plugging procedure is allowed only with the prior approval of the Authorized Officer, Farmington Field Office.

1.2 Requirements may be added to address specific well conditions.

2.0 Materials used must be accurately measured. (densometer/scales)

3.0 A tank or lined pit must be used for containment of any fluids from the wellbore during plugging operations and all pits are to be fenced with woven wire. These pits will be fenced on three sides and once the rig leaves location, the fourth side will be fenced.

3.1 Pits are not to be used for disposal of any hydrocarbons. If hydrocarbons are present in the pit, the fluids must be removed prior to filling in.

4.0 All cement plugs are to be placed through a work string. Cement may be bull-headed down the casing with prior approval. Cement caps on top of bridge plugs or cement retainers may be placed by dump bailer.

4.1 The cement shall be as specified in the approved plugging plan.

4.2 All cement plugs placed inside casing shall have sufficient volume to fill a minimum of 100' of the casing, or annular void(s) between casings, plus an excess volume sufficient to provide for 50 linear feet of fill above the plug.

4.3 Surface plugs may be no less than 50' in length.

4.4 All cement plugs placed to fill annular void(s) between casing and the formation shall be of sufficient volume to fill a minimum of 100' of the annular space plus 100% excess, calculated using the bit size, or 100' of annular capacity, determined from a caliper log, plus an excess volume sufficient to provide for 50 linear feet of fill above the plug.

4.5 All cement plugs placed to fill an open hole shall be of sufficient volume to fill a minimum of 100' of hole, as calculated from a caliper log, plus an excess volume sufficient to provide for 50 linear feet of fill above the plug. In the absence of a caliper log, an excess of 100% shall be required.

**4.6 A cement bond log or other accepted cement evaluation tool is required to be run if one had not been previously ran or cement did not circulate to surface during the original casing cementing job or subsequent cementing jobs.**

5.0 All cement plugs spotted across, or above, any exposed zone(s), when; the wellbore is not full of fluid or the fluid level will not remain static, and in the case of lost circulation or partial returns during cement placement, shall be tested by tagging with the work string.

5.1 The top of any cement plug verified by tagging must be at or above the depth specified in the approved plan, without regard to any excess.

5.2 Testing will not be required for any cement plug that is mechanically contained by use of a bridge plug and/or cement retainer, if casing integrity has been established.

5.3 Any cement plug which is the only isolating medium, for a fresh water interval or a zone containing a prospectively valuable deposit of minerals, shall be tested by tagging.

5.4 If perforations are required below the surface casing shoe, a 30 minute minimum wait time will be required to determine if gas and/or water flows are present. If flow is present, the well will be shut-in for a minimum of one hour and the pressure recorded. Short or long term venting may be necessary to evacuate trapped gas. **If only a water flow occurs with no associated gas, shut well in and record the pressures. Contact the Engineer as it may be necessary to change the cement weight and additives.**

6.0 Before setting any cement plugs the hole needs to be rolled. All wells are to be controlled by means of a fluid that is to be of a weight and consistency necessary to stabilize the wellbore. This fluid shall be left in place as filler between all plugs.

6.1 Drilling mud may be used as the wellbore fluid in open hole plugging operations.

6.2 The wellbore fluid used in cased holes shall be of sufficient weight to balance known pore pressures in all exposed formations.

7.0 A blowout preventer and related equipment (BOPE) shall be installed and tested prior to working in a wellbore with any exposed zone(s); (1) that are over pressured, (2) where the pressures are unknown, or (3) known to contain H<sub>2</sub>S.

8.0 Within 30 days after plugging work is completed, file a Sundry Notice, Subsequent Report of Abandonment (Form 3160-5), five copies, with the Field Manager, Bureau of Land Management, 6251 College Blvd., Suite A, Farmington, NM 87402. The report should show the manner in which the plugging work was carried out, the extent, by depth(s), of cement plugs placed, and the size and location, by depth(s), of casing left in the well. Show date well was plugged.

9.0 All permanently abandoned wells are to be marked with a permanent monument as specified in 43 CFR 3162.6(d). Unless otherwise approved.

10.0 If this well is located in a Specially Designated Area (SDA), compliance with the appropriate seasonal closure requirements will be necessary.

All of the above are minimum requirements. Failure to comply with the above conditions of approval may result in an assessment for noncompliance and/or a Shut-in Order being issued pursuant to 43 CFR 3163.1. You are further advised that any instructions, orders or decisions issued by the Bureau of Land Management are subject to administrative review pursuant to 43 CFR 3165.3 and appeal pursuant to 43 CFR 3165.4 and 43 CFR 4.700.

(October 2012 Revision)



# BLM FLUID MINERALS Geologic Report

Date Completed: 5/28/21

Well No. CBM 14-27-14 #1 (API# 30-045-35299)	Location	660	FNL	&	661	FEL
Lease No. NO-G-1008-1773	Sec. 14	T27N			R14W	
Operator Navajo Nation Oil & Gas Company	County	San Juan		State	New Mexico	
Total Depth 6127'	PBTD 6097'	Formation Dakota				
Elevation (GL) 5984'	Elevation (KB) 5996'					

Geologic Formations	Est. Top	Est. Bottom	Log Top	Log Bottom	Remarks
San Jose Fm					Surface/Fresh water sands
Nacimiento Fm					Fresh water sands
Ojo Alamo Ss					Aquifer (fresh water)
Kirtland Shale	Surf	913			Possible usable water near surface
Fruitland Fm	913	1229			Coal/Gas/Possible water
Pictured Cliffs Ss	1229	1419			Gas
Lewis Shale	1419	1637			
Chacra	1637	2037			
Cliff House (La Ventana) Ss	2037	2127			Water/Possible gas
Menefee Fm	2127	3782			Coal/Ss/Water/Possible O&G
Point Lookout Ss	3782	4013			Probable water/Possible O&G
Mancos Shale	4013	4872			
Gallup	4872	5317			O&G/probable water
Sanostee	5317	5921			
Graneros Shale	5921	5947			
Dakota Ss	5947	5990			Gas/potential oil/water
Morrison	5990	PBTD			Water/possible gas

Remarks:

P &amp; A

- No well log available for the subject well, tops were estimated based of well logs for Reference Wells #1 and #2.
- BLM formation top estimates for all formations, except the Morrison, vary from Operator estimates.
- All plugs require adjustment to cover both BLM formation top estimates and Operator estimates.
- Please add a plug to cover the Chacra formation top estimate @ 1637'.
- Plug #7 should be adjusted to cover the interval from 380'-Surface so that the entire surface casing string is covered.

Reference Well:

1) **Formation Tops**  
(Surface-Gallup) (+7' KB)  
Miami Oil Producers, Inc.  
Ojo Alamo #1  
Sec. 14, T27N, R14W  
GL 5982' KB 5989'

2) **Formation Tops**  
(Sanostee-Morrison) (-50')  
Dugan Production Co.  
Rex Uranium #3  
990' FNL, 990' FWL  
Sec. 18, T27N, R13W  
GL 6055' KB 6067'

Prepared by: Chris Wenman

**District I**  
1625 N. French Dr., Hobbs, NM 88240  
Phone:(575) 393-6161 Fax:(575) 393-0720  
**District II**  
811 S. First St., Artesia, NM 88210  
Phone:(575) 748-1283 Fax:(575) 748-9720  
**District III**  
1000 Rio Brazos Rd., Aztec, NM 87410  
Phone:(505) 334-6178 Fax:(505) 334-6170  
**District IV**  
1220 S. St Francis Dr., Santa Fe, NM 87505  
Phone:(505) 476-3470 Fax:(505) 476-3462

State of New Mexico  
Energy, Minerals and Natural Resources  
Oil Conservation Division  
1220 S. St Francis Dr.  
Santa Fe, NM 87505

CONDITIONS  
  
Action 100603

CONDITIONS

Operator: NNOGC EXPLORATION AND PRODUCTION, LLC P.O. Box 4439 Window Rock, AZ 86515	OGRID: 292875
	Action Number: 100603
	Action Type: [C-103] Sub. Plugging (C-103P)

CONDITIONS

Created By	Condition	Condition Date
mkuehling	None	6/23/2022