

Office
 District I – (575) 393-6161
 1625 N. French Dr., Hobbs, NM 88240
 District II – (575) 748-1283
 811 S. First St., Artesia, NM 88210
 District III – (505) 334-6178
 1000 Rio Brazos Rd., Aztec, NM 87410
 District IV – (505) 476-3460
 1220 S. St. Francis Dr., Santa Fe, NM
 87505

State of New Mexico
 Energy, Minerals and Natural Resources

Form C-103
 Revised July 18, 2013

OIL CONSERVATION DIVISION
 1220 South St. Francis Dr.
 Santa Fe, NM 87505

| |
|------------------------------------------------------------------------------------------|
| WELL API NO. 30-015-26229 |
| 5. Indicate Type of Lease STATE <input type="checkbox"/> FEE <input type="checkbox"/> |
| 6. State Oil & Gas Lease No. |
| 7. Lease Name or Unit Agreement Name Meridian Federal |
| 8. Well Number 1 |
| 9. OGRID Number 371449 |
| 10. Pool name or Wildcat Parkway; Bone Spring |
| 11. Elevation (Show whether DR, RKB, RT, GR, etc.) |

| | |
|-----------------------------------------------------------------------------------------------------------------------------------------------------------------------------------------------------------|--|
| SUNDRY NOTICES AND REPORTS ON WELLS (DO NOT USE THIS FORM FOR PROPOSALS TO DRILL OR TO DEEPEN OR PLUG BACK TO A DIFFERENT RESERVOIR. USE "APPLICATION FOR PERMIT" (FORM C-101) FOR SUCH PROPOSALS.) | |
| 1. Type of Well: Oil Well <input type="checkbox"/> Gas Well <input type="checkbox"/> Other | |
| 2. Name of Operator Colgate Operating, LLC | |
| 3. Address of Operator 300 North Marienfeld Street, Suite 1000 Midland, Texas 79701 | |
| 4. Well Location Unit Letter <u>D</u> : <u>660</u> feet from the <u>North</u> line and <u>660</u> feet from the <u>West</u> line Section <u>03</u> Township <u>20S</u> Range <u>29E</u> NMPM County | |
| 11. Elevation (Show whether DR, RKB, RT, GR, etc.) | |

12. Check Appropriate Box to Indicate Nature of Notice, Report or Other Data

| NOTICE OF INTENTION TO: | | SUBSEQUENT REPORT OF: | |
|------------------------------------------------|------------------------------------------------------|--------------------------------------------------|------------------------------------------|
| PERFORM REMEDIAL WORK <input type="checkbox"/> | PLUG AND ABANDON <input checked="" type="checkbox"/> | REMEDIAL WORK <input type="checkbox"/> | ALTERING CASING <input type="checkbox"/> |
| TEMPORARILY ABANDON <input type="checkbox"/> | CHANGE PLANS <input type="checkbox"/> | COMMENCE DRILLING OPNS. <input type="checkbox"/> | P AND A <input type="checkbox"/> |
| PULL OR ALTER CASING <input type="checkbox"/> | MULTIPLE COMPL <input type="checkbox"/> | CASING/CEMENT JOB <input type="checkbox"/> | |
| DOWNHOLE COMMINGLE <input type="checkbox"/> | | | |
| CLOSED-LOOP SYSTEM <input type="checkbox"/> | | | |
| OTHER: <input type="checkbox"/> | | OTHER: <input type="checkbox"/> | |

13. Describe proposed or completed operations. (Clearly state all pertinent details, and give pertinent dates, including estimated date of starting any proposed work). SEE RULE 19.15.7.14 NMAC. For Multiple Completions: Attach wellbore diagram of proposed completion or recompletion.

Colgate Operating, LLC would like the approval to Plug and Abandon the Meridian Federal 001 wellbore. Details are attached.

Spud Date:

Rig Release Date:

I hereby certify that the information above is true and complete to the best of my knowledge and belief.

SIGNATURE Mikah Thomas TITLE Sr. Regulatory Analyst DATE 2022.07.21

Type or print name Mikah Thomas E-mail address: mthomas@colgateenergy.com PHONE: 432-695-4272

For State Use Only

APPROVED BY: _____ TITLE _____ DATE _____

Conditions of Approval (if any):

**Meridian Federal 1**

API# 30-015-26229

Plug & Abandon

32.6081009, -104.0693512

| | | |
|----------------|----------------------------------------|--------------|
| Mikah Thomas | Regulatory Analyst | 432.661.7106 |
| Mason Mumford | Production Engineer | 361.877.7998 |
| Levi Harris | Production Engineering Supervisor | 720.261.4633 |
| Casey McCain | VP of Operations | 432.202.2298 |
| Richard Lawson | Operations Superintendent | 432.530.3188 |
| TBD | Wellsite Supervisor (P&A Company Rep) | TBD |
| David Alvarado | NM OCD – District II Office in Artesia | 575.748.1283 |



Well Name: Meridian Federal 1
Area: Parkway
Field: **NM Vertical**
Job Description: Plug & Abandon
Budget: Capital
AFE: N/A
Job Category: Abandon
Job Type: Abandon Well
R-111-P Area: No
Date: 5/23/2022

Well History:

This well was drilled in 1990 by Ray Westall and originally completed in the Bone Spring. In 2013, Manzano recompleted the well in the Delaware. In 2017, Colgate took over operations.

Proposed Job Synopsis:

Per ACO from Oxy acquisition, Colgate will plug and abandon this well. Produced water will not be used during any part of the plugging operation. Squeeze pressures are not to exceed 500psi, unless approval is given by NMOCD. Mud laden fluids must be placed between all cement plugs mixed at 1 sack per 4 bbls of water.

Well Details:

KB: 13'
 Perfs: 5,434' – 5,448'
 PBTD: 5,715' (CIBP @ 5,750' w/ 35' cement on top)
 Casing: 5.50", 17#, N-80, K-55 & J-55

Well Details:

| Formation | Top Depths |
|---------------|------------------|
| Salado Salt | 420' (estimated) |
| Base Salt | 970' (estimated) |
| Yates Sand | 1,322' (MWD) |
| Seven Rivers | 1,770' (MWD) |
| Delaware Sand | 3,406' (MWD) |
| Bone Springs | 5,702' (MWD) |



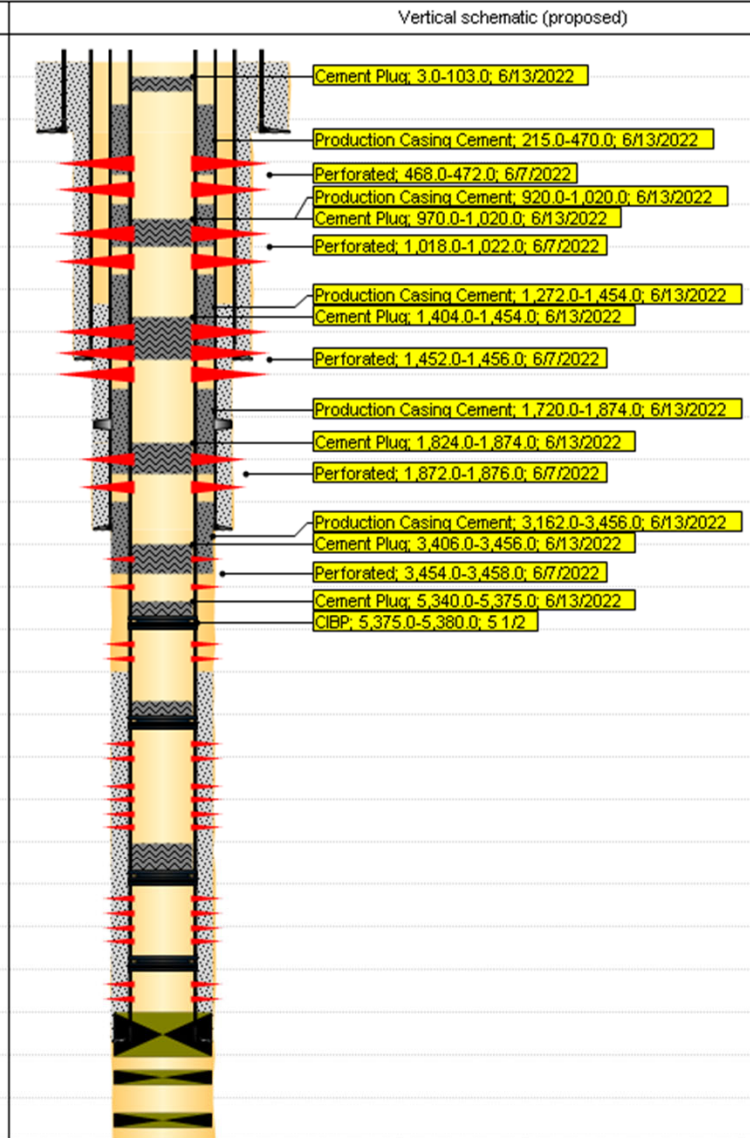
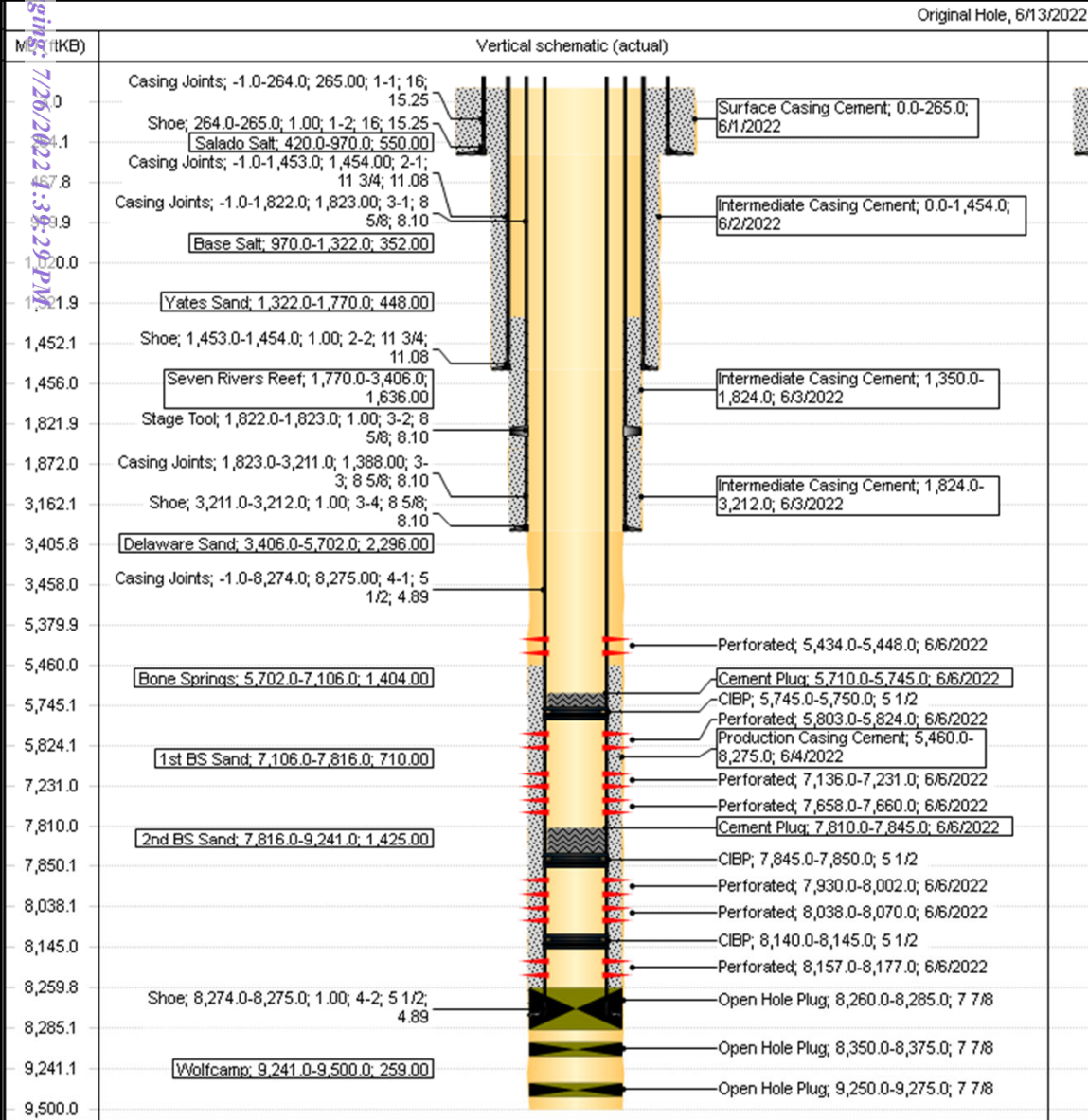
Simplified Action Plan:

****Notify NM OCD District II Office in Artesia (575)626-0830 24 hours prior to MIRU to begin P&A operations.****

- Conduct Pre Job Safety Assessment prior to starting work and each significant operation.
- MIRU P&A rig. Dig out cellar. Stage equipment.
- Notify engineering of pressure on 8-5/8" intermediate casing x 5-1/2" production casing annulus. If needed, install a new gauge to record pressure.
- Pressure test tubing to verify use as a workstring.
 - If test fails by leaking through pump, drop SV and re-test after pulling pump and rods.
- Unhang rods from bridle and lay down horses head and bridle.
- Unseat pump, pull and lay down rods and pump.
- Bleed pressure down, and kill well if necessary with heavy brine.
- ND WH, NU BOP.
- POOH tubing standing back, lay down BHA.
 - If tubing test failed prior, RIH with tubing pressure testing and laying down bad jts as they fail.
 - If less than ~5,400' of good tubing, arrange delivery of used tubing to make up difference for workstring.
- MIRU wireline unit. Set 5-1/2" CIBP @ 5,380' (Top Perf Plug) and POOH.
- Load hole and pressure test CIBP and 5-1/2" production casing to 500psi.
 - Alert engineering immediately upon results.
- RIH w/ dump bailer and spot 35' of cement on top of CIBP.
- Wait for cement to set up, RIH w/ workstring and circulate well clean with 9.5ppg brine.
- RIH w/ perf guns and shoot perfs @ 3,456' for 50' below top of Delaware Sand Formation.
- RIH w/ workstring and set squeeze packer at 3,406'. Pump 75 sacks of class C cement slurry for a 50' plug inside production casing and ~420' plug behind production casing to cover a minimum of ~3,162' - ~3,456' to plug off Delaware Sand Formation top and 1st Intermediate Casing Shoe.
- Wash lines clean and POOH.
- **WOC for 4 hours. RIH and tag TOC.**
- RIH w/ perf guns and shoot perfs @ 1,874' for 50' below DV Tool.
- RIH w/ workstring and set squeeze packer at 1,824'. Pump 40 sacks of class C cement slurry for a 50' plug inside production casing and ~185' plug behind production casing to cover a minimum of ~1,720' - ~1,874' to plug off DV Tool and Sever Rivers Formation Top.
- Wash lines clean and POOH.
- **WOC for 4 hours. RIH and tag TOC.**
- RIH w/ perf guns and shoot perfs @ 1,454' for 50' below 2nd Intermediate Casing Shoe.
- RIH w/ workstring and set squeeze packer at 1,404'. Pump 45 sacks of class C cement slurry for a 50' plug inside production casing and ~215' plug behind production casing to cover a minimum of ~1,272' - ~1,454' to plug off 2nd Intermediate Casing Shoe and Yates Sand Formation Top.
- Wash lines clean and POOH.
- **WOC for 4 hours. RIH and tag TOC.**



- RIH w/ perf guns and shoot perfs @ 1,020' for 50' below Base Salt Formation Top.
- RIH w/ workstring and set squeeze packer at 970'. Pump 30 sacks of class C cement slurry for a 50' plug inside production casing and ~130' plug behind production casing to cover a minimum of ~920' - ~1,020' to plug off Base Salt Formation Top.
- Wash lines clean and POOH.
- **WOC for 4 hours. RIH and tag TOC.**
- RIH w/ perf guns and shoot perfs @ 470' for 50' below Salado Salt Formation Top.
- RIH w/ workstring and set squeeze packer at 420'. Pump 60 sacks of class C cement slurry for a 50' plug inside production casing and ~295' plug behind production casing to cover a minimum of ~215' - ~470' to plug off Salado Salt Formation Top and Surface Casing Shoe.
- Wash lines clean and POOH.
- **WOC for 4 hours. RIH and tag TOC.**
- RIH w/ workstring to 103'. Pump 11 sacks of class C cement slurry for a 100' plug from 3' - ~103'.
- Wash lines clean and POOH.
- Cut wellhead and stand up steel marker that is no less than 4" in diameter and extending four feet above ground level. Mix 1 sack of cement and set marker in place with the following information:
 - Colgate Operating
 - Meridian Federal 1
 - 30-015-26229
 - Unit D
 - 660 FNL, 660 FWL
 - Sec 3, T20S, R29E
 - Plugging Date
 - Eddy Co.
- Notify NM OCD that P&A is complete and the P&A rig is leaving location.
- CLEAN LOCATION OF ALL TRASH, DEBRIS, MATERIAL, ETC.
- RDMO P&A rig and equipment.



District I
1625 N. French Dr., Hobbs, NM 88240
Phone:(575) 393-6161 Fax:(575) 393-0720
District II
811 S. First St., Artesia, NM 88210
Phone:(575) 748-1283 Fax:(575) 748-9720
District III
1000 Rio Brazos Rd., Aztec, NM 87410
Phone:(505) 334-6178 Fax:(505) 334-6170
District IV
1220 S. St Francis Dr., Santa Fe, NM 87505
Phone:(505) 476-3470 Fax:(505) 476-3462

State of New Mexico
Energy, Minerals and Natural Resources
Oil Conservation Division
1220 S. St Francis Dr.
Santa Fe, NM 87505

CONDITIONS

Action 117076

CONDITIONS

| | |
|-----------------------------------------------------------------------------------------|-----------------------------------------------------|
| Operator: COLGATE OPERATING, LLC 300 North Marienfeld Street Midland, TX 79701 | OGRID: 371449 |
| | Action Number: 117076 |
| | Action Type: [C-103] NOI Plug & Abandon (C-103F) |

CONDITIONS

| | | |
|------------|-----------|----------------|
| Created By | Condition | Condition Date |
| gcordero | None | 7/25/2022 |