

Well Name: PURE GOLD MDP1 29-17 FED COM	Well Location: T23S / R31E / SEC 29 / SWSE / 32.269877 / -103.7979582	County or Parish/State: EDDY / NM
Well Number: 13H	Type of Well: OIL WELL	Allottee or Tribe Name:
Lease Number: NMNM0281482A	Unit or CA Name:	Unit or CA Number:
US Well Number: 3001545755	Well Status: Approved Application for Permit to Drill	Operator: OXY USA INCORPORATED

Notice of Intent

Sundry ID: 2649980

Type of Submission: Notice of Intent

Type of Action: Other

Date Sundry Submitted: 12/22/2021

Time Sundry Submitted: 07:18

Date proposed operation will begin: 03/01/2022

Procedure Description: OXY USA Inc. respectfully requests to amend the subject well AAPD surface hole location, well spacing and drill plan. This well is moving from PAD 2905 to PAD 2904 (new pad not built yet). See the attached C102 well plat and site plan layout, revised drill plan and directional attached for reference. Additional disturbance previously discussed.

Surface Disturbance

Is any additional surface disturbance proposed?: No

NOI Attachments

Procedure Description

Pad_2904__Rev._A__20220502115419.pdf

New_KPLA_3S_Wellbore_Schematic_20211222071616.pdf

PureGoldMDP129_17FederalCom13H_TNSWedge441_5.500in_20.00_P110CY_20211222071601.pdf

PureGoldMDP129_17FederalCom13H_TNSWedge425_5.500in_20.00_P110CY_20211222071549.pdf

PureGoldMDP129_17FederalCom13H_TNSWedge461_5.500in_20.0_P110CY_20211222071544.pdf

PureGoldMDP129_17FederalCom13H_DirectPlan_20211222071534.pdf

PureGoldMDP129_17FederalCom13H_DirectPlot_20211222070649.pdf

Well Name: PURE GOLD MDP1 29-17
FED COM

Well Location: T23S / R31E / SEC 29 /
SWSE / 32.269877 / -103.7979582

County or Parish/State: EDDY /
NM

Well Number: 13H

Type of Well: OIL WELL

Allottee or Tribe Name:

Lease Number: NMNM0281482A

Unit or CA Name:

Unit or CA Number:

US Well Number: 3001545755

Well Status: Approved Application for
Permit to Drill

Operator: OXY USA
INCORPORATED

PureGoldMDP129_17FederalCom13H_DrillPlan_20211222070631.pdf

PureGoldMDP129_17FedCom13H_C102_20211222070132.pdf

Conditions of Approval

Additional

PURE_GOLD_MDP1_29_17_FED_COM___SUNDRY_COA___DESIGN_CHANGE_20220804142211.pdf

COAs_Pure_Gold_Sundries_20220628085254.pdf

Operator

I certify that the foregoing is true and correct. Title 18 U.S.C. Section 1001 and Title 43 U.S.C. Section 1212, make it a crime for any person knowingly and willfully to make to any department or agency of the United States any false, fictitious or fraudulent statements or representations as to any matter within its jurisdiction. Electronic submission of Sundry Notices through this system satisfies regulations requiring a

Operator Electronic Signature: LESLIE REEVES

Signed on: MAY 02, 2022 11:54 AM

Name: OXY USA INCORPORATED

Title: Advisor Regulatory

Street Address: 5 GREENWAY PLAZA, SUITE 110

City: HOUSTON **State:** TX

Phone: (713) 497-2492

Email address: LESLIE_REEVES@OXY.COM

Field

Representative Name:

Street Address:

City: **State:** **Zip:**

Phone:

Email address:

BLM Point of Contact

BLM POC Name: CODY LAYTON

BLM POC Title: Assistant Field Manager Lands & Minerals

BLM POC Phone: 5752345959

BLM POC Email Address: clayton@blm.gov

Disposition: Approved

Disposition Date: 08/10/2022

Signature: Cody R. Layton

District I
1625 N. French Dr., Hobbs, NM 88240
Phone: (575) 393-6161 Fax: (575) 393-0720
District II
811 S. First St., Artesia, NM 88210
Phone: (575) 748-1283 Fax: (575) 748-9720
District III
1000 Rio Brazos Road, Aztec, NM 87410
Phone: (505) 334-6178 Fax: (505) 334-6170
District IV
1220 S. St. Francis Dr., Santa Fe, NM 87505
Phone: (505) 476-3460 Fax: (505) 476-3462

State of New Mexico
Energy, Minerals & Natural Resources Department
OIL CONSERVATION DIVISION
1220 South St. Francis Dr.
Santa Fe, NM 87505

Form C-102
Revised August 1, 2011
Submit one copy to appropriate
District Office

AMENDED REPORT

WELL LOCATION AND ACREAGE DEDICATION PLAT

API Number	Pool Code	Pool Name
Property Code	Property Name	Well Number
OGRID No.	Operator Name	Elevation
	PURE GOLD MDP1 "29_17" FEDERAL COM	13H
	OXY USA INC.	3362.9'

Surface Location

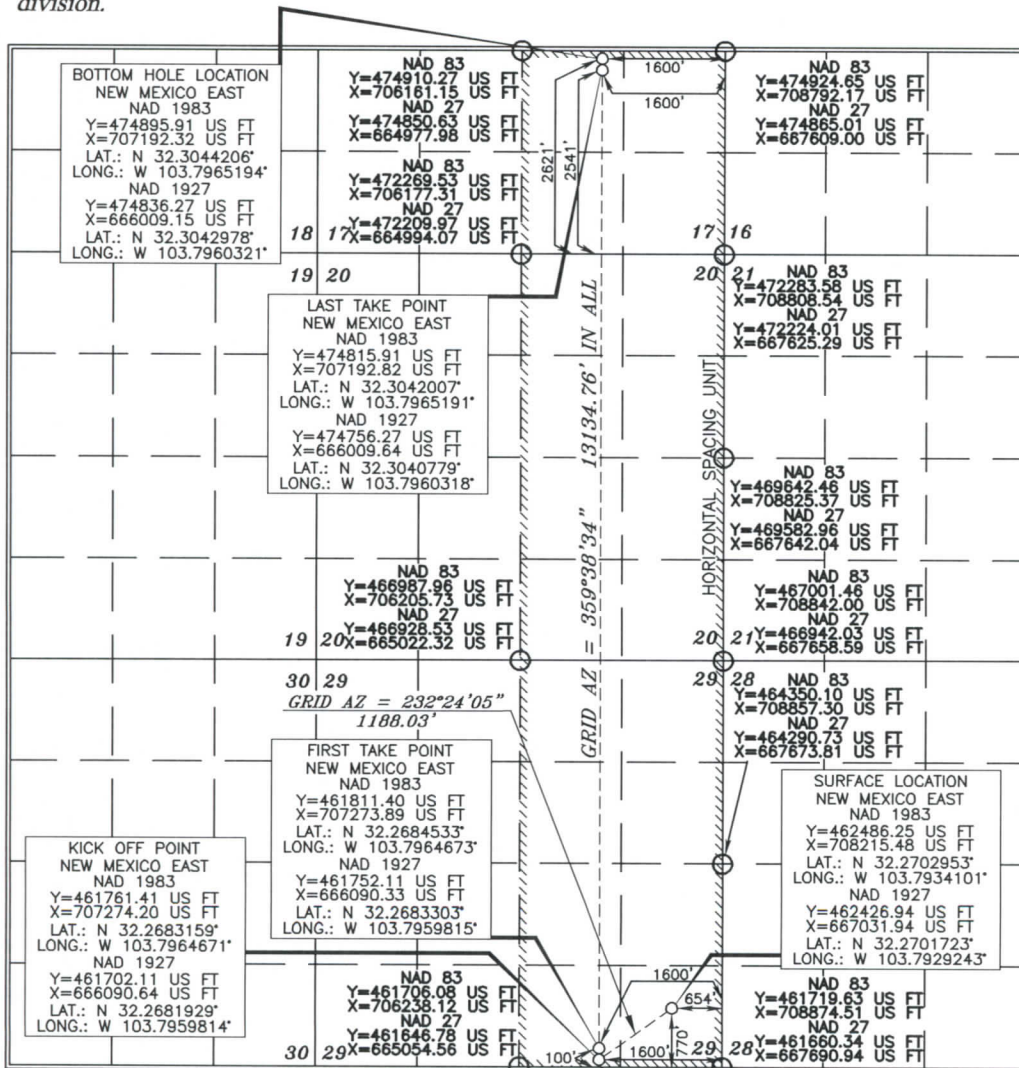
UL or lot no.	Section	Township	Range	Lot Idn	Feet from the	North/South line	Feet from the	East/West line	County
P	29	23 SOUTH	31 EAST, N.M.P.M.		770'	SOUTH	654'	EAST	EDDY

Bottom Hole Location If Different From Surface

UL or lot no.	Section	Township	Range	Lot Idn	Feet from the	North/South line	Feet from the	East/West line	County
J	17	23 SOUTH	31 EAST, N.M.P.M.		2621'	SOUTH	1600'	EAST	EDDY

Dedicated Acres	Joint or Infill	Consolidation Code	Order No.

No allowable will be assigned to this completion until all interests have been consolidated or a non-standard unit has been approved by the division.



OPERATOR CERTIFICATION

I hereby certify that the information contained herein is true and complete to the best of my knowledge and belief, and that this organization either owns a working interest or unleased mineral interest in the land including the proposed bottom hole location or has a right to drill this well at this location pursuant to a contract with an owner of such a mineral or working interest, or to a voluntary pooling agreement or a compulsory pooling order heretofore entered by the division.

Leslie T. Reeves

Signature _____ Date _____

Printed Name _____

E-mail Address _____

SURVEYOR CERTIFICATION

I hereby certify that the well location shown on this plat was plotted from field notes of actual surveys made by me or under my supervision, and that the same is true and correct to the best of my belief.



FEBRUARY 19, 2020

Date of Survey _____

Signature and Seal of Professional Surveyor _____

15079
Certificate Number _____

WO# 200219WL-g (KA)

PECOS DISTRICT DRILLING CONDITIONS OF APPROVAL

ALL PREVIOUS COAs STILL APPLY

OPERATOR'S NAME:	Oxy USA Incorporated
WELL NAME & NO.:	PURE GOLD MDP1 29-17 FED COM 13H
SURFACE HOLE FOOTAGE:	770'S & 654'E
BOTTOM HOLE FOOTAGE:	2621'S & 1600'E
LOCATION:	Section 29, T.23 S., R.31 E., NMPM
COUNTY:	Eddy County, New Mexico

COA

H2S	<input type="radio"/> Yes	<input checked="" type="radio"/> No	
Potash	<input type="radio"/> None	<input type="radio"/> Secretary	<input checked="" type="radio"/> R-111-P
Cave/Karst Potential	<input checked="" type="radio"/> Low	<input type="radio"/> Medium	<input type="radio"/> High
Cave/Karst Potential	<input type="radio"/> Critical		
Variance	<input type="radio"/> None	<input checked="" type="radio"/> Flex Hose	<input type="radio"/> Other
Wellhead	<input type="radio"/> Conventional	<input checked="" type="radio"/> Multibowl	<input type="radio"/> Both
Other	<input type="checkbox"/> 4 String Area	<input type="checkbox"/> Capitan Reef	<input type="checkbox"/> WIPP
Other	<input type="checkbox"/> Fluid Filled	<input checked="" type="checkbox"/> Cement Squeeze	<input type="checkbox"/> Pilot Hole
Special Requirements	<input type="checkbox"/> Water Disposal	<input checked="" type="checkbox"/> COM	<input type="checkbox"/> Unit

A. CASING

Alternate Casing Design:

1. The **13-3/8** inch surface casing shall be set at approximately **461** feet (a minimum of **70 feet (Eddy County)** into the Rustler Anhydrite and above the salt) and cemented to the surface.
 - a. If cement does not circulate to the surface, the appropriate BLM office shall be notified and a temperature survey utilizing an electronic type temperature survey with surface log readout will be used or a cement bond log shall be run to verify the top of the cement. Temperature survey will be run a minimum of six hours after pumping cement and ideally between 8-10 hours after completing the cement job.
 - b. Wait on cement (WOC) time for a primary cement job will be a minimum of **24 hours in the Potash Area** or 500 pounds compressive strength, whichever is greater. (This is to include the lead cement)
 - c. Wait on cement (WOC) time for a remedial job will be a minimum of 4 hours after bringing cement to surface or 500 pounds compressive strength,

whichever is greater.

- d. If cement falls back, remedial cementing will be done prior to drilling out that string.
2. The 9-5/8 inch intermediate casing shall be set at approximately 4,235 feet. The minimum required fill of cement behind the 9-5/8 inch intermediate casing is:

Option 1 (Single Stage):

- Cement to surface. If cement does not circulate see B.1.a, c-d above.
Wait on cement (WOC) time for a primary cement job is to include the lead cement slurry due to cave/karst or potash.

Option 2:

Operator has proposed a DV tool, the depth may be adjusted as long as the cement is changed proportionally. The DV tool may be cancelled if cement circulates to surface on the first stage.

- a. First stage to DV tool: Cement to circulate. If cement does not circulate off the DV tool, contact the appropriate BLM office before proceeding with second stage cement job.
 - b. Second stage above DV tool:
 - Cement to surface. If cement does not circulate, contact the appropriate BLM office.
Wait on cement (WOC) time for a primary cement job is to include the lead cement slurry due to cave/karst or potash.
- ❖ In R111 Potash Areas if cement does not circulate to surface on the first two salt protection casing strings, the cement on the 3rd casing string must come to surface.
3. The 5-1/2 inch production casing shall be set at approximately 22,480 feet. **ENSURE OPEN HOLE EXCESS/ BRADENHEAD ADJUSTED TO ACHIEVE CEMENT TO SURFACE.** The minimum required fill of cement behind the 5-1/2 inch production casing is:

Option 1 (Single Stage):

- Cement to surface. If cement does not circulate, contact the appropriate BLM office.

Option 2:

Operator has proposed a DV tool, the depth may be adjusted as long as the cement is changed proportionally. The DV tool may be cancelled if cement circulates to surface on the first stage.

- a. First stage to DV tool: Cement to circulate. If cement does not circulate off the DV tool, contact the appropriate BLM office before proceeding with second stage cement job.
- b. Second stage above DV tool:
 - Cement to surface. If cement does not circulate, contact the appropriate BLM office.

Operator has proposed to pump down 5-1/2” X 9-5/8” annulus. Operator must run a CBL or ECHO-METER from TD of the 5-1/2” casing to surface. Submit results to BLM.

GENERAL REQUIREMENTS

The BLM is to be notified in advance for a representative to witness:

- a. Spudding well (minimum of 24 hours)
- b. Setting and/or Cementing of all casing strings (minimum of 4 hours)
- c. BOPE tests (minimum of 4 hours)

Eddy County

Call the Carlsbad Field Office, 620 East Greene St., Carlsbad, NM 88220, (575) 361-2822

Lea County

Call the Hobbs Field Station, 414 West Taylor, Hobbs NM 88240, (575) 689-5981

- 1. Unless the production casing has been run and cemented or the well has been properly plugged, the drilling rig shall not be removed from over the hole without prior approval.
 - a. In the event the operator has proposed to drill multiple wells utilizing a skid/walking rig. Operator shall secure the wellbore on the current well, after installing and testing the wellhead, by installing a blind flange of like pressure rating to the wellhead and a pressure gauge that can be monitored while drilling is performed on the other well(s).
 - b. When the operator proposes to set surface casing with Spudder Rig

- Notify the BLM when moving in and removing the Spudder Rig.
 - Notify the BLM when moving in the 2nd Rig. Rig to be moved in within 90 days of notification that Spudder Rig has left the location.
 - BOP/BOPE test to be conducted per Onshore Oil and Gas Order No. 2 as soon as 2nd Rig is rigged up on well.
2. Floor controls are required for 3M or Greater systems. These controls will be on the rig floor, unobstructed, readily accessible to the driller and will be operational at all times during drilling and/or completion activities. Rig floor is defined as the area immediately around the rotary table; the area immediately above the substructure on which the draw works are located, this does not include the dog house or stairway area.
 3. The record of the drilling rate along with the GR/N well log run from TD to surface (horizontal well – vertical portion of hole) shall be submitted to the BLM office as well as all other logs run on the borehole 30 days from completion. If available, a digital copy of the logs is to be submitted in addition to the paper copies. The Rustler top and top and bottom of Salt are to be recorded on the Completion Report.

A. CASING

1. Changes to the approved APD casing program need prior approval if the items substituted are of lesser grade or different casing size or are Non-API. The Operator can exchange the components of the proposal with that of superior strength (i.e. changing from J-55 to N-80, or from 36# to 40#). Changes to the approved cement program need prior approval if the altered cement plan has less volume or strength or if the changes are substantial (i.e. Multistage tool, ECP, etc.). The initial wellhead installed on the well will remain on the well with spools used as needed.
2. Wait on cement (WOC) for Potash Areas: After cementing but before commencing any tests, the casing string shall stand cemented under pressure until both of the following conditions have been met: 1) cement reaches a minimum compressive strength of 500 psi for all cement blends, 2) until cement has been in place at least 24 hours. WOC time will be recorded in the driller's log. The casing integrity test can be done (prior to the cement setting up) immediately after bumping the plug.
3. Wait on cement (WOC) for Water Basin: After cementing but before commencing any tests, the casing string shall stand cemented under pressure until both of the following conditions have been met: 1) cement reaches a minimum compressive strength of 500 psi at the shoe, 2) until cement has been in place at least 8 hours. WOC time will be recorded in the driller's log. See individual casing strings for details regarding lead cement slurry requirements. The casing integrity test can be done (prior to the cement setting up) immediately after bumping the plug.

4. Provide compressive strengths including hours to reach required 500 pounds compressive strength prior to cementing each casing string. Have well specific cement details onsite prior to pumping the cement for each casing string.
5. No pea gravel permitted for remedial or fall back remedial without prior authorization from the BLM engineer.
6. On that portion of any well approved for a 5M BOPE system or greater, a pressure integrity test of each casing shoe shall be performed. Formation at the shoe shall be tested to a minimum of the mud weight equivalent anticipated to control the formation pressure to the next casing depth or at total depth of the well. This test shall be performed before drilling more than 20 feet of new hole.
7. If hardband drill pipe is rotated inside casing, returns will be monitored for metal. If metal is found in samples, drill pipe will be pulled and rubber protectors which have a larger diameter than the tool joints of the drill pipe will be installed prior to continuing drilling operations.
8. Whenever a casing string is cemented in the R-111-P potash area, the NMOCD requirements shall be followed.

B. PRESSURE CONTROL

1. All blowout preventer (BOP) and related equipment (BOPE) shall comply with well control requirements as described in Onshore Oil and Gas Order No. 2 and API RP 53 Sec. 17.
2. If a variance is approved for a flexible hose to be installed from the BOP to the choke manifold, the following requirements apply: The flex line must meet the requirements of API 16C. Check condition of flexible line from BOP to choke manifold, replace if exterior is damaged or if line fails test. Line to be as straight as possible with no hard bends and is to be anchored according to Manufacturer's requirements. The flexible hose can be exchanged with a hose of equal size and equal or greater pressure rating. Anchor requirements, specification sheet and hydrostatic pressure test certification matching the hose in service, to be onsite for review. These documents shall be posted in the company man's trailer and on the rig floor.
3. 5M or higher system requires an HCR valve, remote kill line and annular to match. The remote kill line is to be installed prior to testing the system and tested to stack pressure.
4. If the operator has proposed a multi-bowl wellhead assembly in the APD. The following requirements must be met:
 - a. Wellhead shall be installed by manufacturer's representatives, submit documentation with subsequent sundry.

- b. If the welding is performed by a third party, the manufacturer's representative shall monitor the temperature to verify that it does not exceed the maximum temperature of the seal.
 - c. Manufacturer representative shall install the test plug for the initial BOP test.
 - d. Whenever any seal subject to test pressure is broken, all the tests in OOGO2.III.A.2.i must be followed.
 - e. If the cement does not circulate and one inch operations would have been possible with a standard wellhead, the well head shall be cut off, cementing operations performed and another wellhead installed.
5. The appropriate BLM office shall be notified a minimum of 4 hours in advance for a representative to witness the tests.
 - a. In a water basin, for all casing strings utilizing slips, these are to be set as soon as the crew and rig are ready and any fallback cement remediation has been done. The casing cut-off and BOP installation can be initiated four hours after installing the slips, which will be approximately six hours after bumping the plug. For those casing strings not using slips, the minimum wait time before cut-off is eight hours after bumping the plug. BOP/BOPE testing can begin after cut-off or once cement reaches 500 psi compressive strength (including lead when specified), whichever is greater. However, if the float does not hold, cut-off cannot be initiated until cement reaches 500 psi compressive strength (including lead when specified).
 - b. In potash areas, for all casing strings utilizing slips, these are to be set as soon as the crew and rig are ready and any fallback cement remediation has been done. For all casing strings, casing cut-off and BOP installation can be initiated at twelve hours after bumping the plug. However, **no tests** shall commence until the cement has had a minimum of 24 hours setup time, except the casing pressure test can be initiated immediately after bumping the plug (only applies to single stage cement jobs).
 - c. The tests shall be done by an independent service company utilizing a test plug not a cup or J-packer. The operator also has the option of utilizing an independent tester to test without a plug (i.e. against the casing) pursuant to Onshore Order 2 with the pressure not to exceed 70% of the burst rating for the casing. Any test against the casing must meet the WOC time for water basin (8 hours) or potash (24 hours) or 500 pounds compressive strength, whichever is greater, prior to initiating the test (see casing segment as lead cement may be critical item).
 - d. The test shall be run on a 5000 psi chart for a 2-3M BOP/BOP, on a 10000 psi chart for a 5M BOP/BOPE and on a 15000 psi chart for a 10M BOP/BOPE. If a linear chart is used, it shall be a one hour chart. A circular chart shall

have a maximum 2 hour clock. If a twelve hour or twenty-four hour chart is used, tester shall make a notation that it is run with a two hour clock.

- e. The results of the test shall be reported to the appropriate BLM office.
- f. All tests are required to be recorded on a calibrated test chart. A copy of the BOP/BOPE test chart and a copy of independent service company test will be submitted to the appropriate BLM office.
- g. The BOP/BOPE test shall include a low pressure test from 250 to 300 psi. The test will be held for a minimum of 10 minutes if test is done with a test plug and 30 minutes without a test plug. This test shall be performed prior to the test at full stack pressure.
- h. BOP/BOPE must be tested by an independent service company within 500 feet of the top of the Wolfcamp formation if the time between the setting of the intermediate casing and reaching this depth exceeds 20 days. This test does not exclude the test prior to drilling out the casing shoe as per Onshore Order No. 2.

C. DRILLING MUD

Mud system monitoring equipment, with derrick floor indicators and visual and audio alarms, shall be operating before drilling into the Wolfcamp formation, and shall be used until production casing is run and cemented.

D. WASTE MATERIAL AND FLUIDS

All waste (i.e. drilling fluids, trash, salts, chemicals, sewage, gray water, etc.) created as a result of drilling operations and completion operations shall be safely contained and disposed of properly at a waste disposal facility. No waste material or fluid shall be disposed of on the well location or surrounding area.

Porto-johns and trash containers will be on-location during fracturing operations or any other crew-intensive operations.

KPI – 08/04/2022

Oxy USA Inc. - Pure Gold MDP1 29_17 Federal Com 13H

Drill Plan

1. Geologic Formations

TVD of Target (ft):	9153	Pilot Hole Depth (ft):	
Total Measured Depth (ft):	22480	Deepest Expected Fresh Water (ft):	401

Delaware Basin

Formation	MD-RKB (ft)	TVD-RKB (ft)	Expected Fluids
Rustler	401	401	
Salado	741	741	Salt
Castile	2704	2704	Salt
Delaware	4136	4135	Oil/Gas/Brine
Bell Canyon	4171	4170	Oil/Gas/Brine
Cherry Canyon	5081	5064	Oil/Gas/Brine
Brushy Canyon	6386	6308	Losses
Bone Spring	8115	7952	Oil/Gas
Bone Spring 1st	9256	8986	Oil/Gas
Bone Spring 2nd			Oil/Gas
Bone Spring 3rd			Oil/Gas
Wolfcamp			Oil/Gas
Penn			Oil/Gas
Strawn			Oil/Gas

*H2S, water flows, loss of circulation, abnormal pressures, etc.

2. Casing Program

Section	Hole Size (in)	MD		TVD		Csg. OD (in)	Csg. Wt. (ppf)	Grade	Conn.
		From (ft)	To (ft)	From (ft)	To (ft)				
Surface	17.5	0	461	0	461	13.375	54.5	J-55	BTC
Salt	12.25	0	4235	0	4233	9.625	40	L-80 HC	BTC
Production	8.5	0	22480	0	9153	5.5	20	P-110	DQX

All casing strings will be tested in accordance with Onshore Oil and Gas Order #2 III.B.1.h

*Oxy requests the option to run production casing with DQX, TORQ DQW, Wedge 425, Wedge 461, and/or Wedge 441 connections to accommodate hole conditions or drilling operations.

*Oxy requests the option to run the 7.625" Intermediate II as a contingency string to be run only if severe hole conditions dictate an additional casing string necessary.

<i>All Casing SF Values will meet or exceed those below</i>			
SF Collapse	SF Burst	Body SF Tension	Joint SF Tension
1.125	1.2	1.4	1.4

Annular Clearance Variance Request

As per the agreement reached in the Oxy/BLM face-to-face meeting on Feb 22, 2018, Oxy requests permission to allow deviation from the 0.422" annular clearance requirement from Onshore Order #2 under the following conditions:

1. Annular clearance to meet or exceed 0.422" between intermediate casing ID and production casing coupling only on the first 500' overlap between both casings.
2. Annular clearance less than 0.422" is acceptable for the curve and lateral portions of the production open hole section.

	Y or N
Is casing new? If used, attach certification as required in Onshore Order #1	Y
Does casing meet API specifications? If no, attach casing specification sheet.	Y
Is premium or uncommon casing planned? If yes attach casing specification sheet.	Y
Does the above casing design meet or exceed BLM's minimum standards? If not provide justification (loading assumptions, casing design criteria).	Y
Will the intermediate pipe be kept at a minimum 1/3 fluid filled to avoid approaching the collapse pressure rating of the casing?	Y
Capitan Reef	
Is well located within Capitan Reef?	N
If yes, does production casing cement tie back a minimum of 50' above the Reef?	
Is well within the designated 4 string boundary.	
SOPA	
Is well located in SOPA but not in R-111-P?	N
If yes, are the first 2 strings cemented to surface and 3 rd string cement tied back 500' into previous casing?	
R-111-P	
Is well located in R-111-P and SOPA?	Y
If yes, are the first three strings cemented to surface?	Y
Is 2 nd string set 100' to 600' below the base of salt?	Y
High Cave/Karst	
Is well located in high Cave/Karst?	N
If yes, are there two strings cemented to surface?	
(For 2 string wells) If yes, is there a contingency casing if lost circulation occurs?	
Critical Cave/Karst	
Is well located in critical Cave/Karst?	N
If yes, are there three strings cemented to surface?	

3. Cementing Program

Section	Stage	Slurry:	Capacities	ft ³ /ft	Excess:	From	To	Sacks	Volume (ft ³)	Placement
Surface	1	Surface - Tail	OH x Csg	0.6946	100%	461	-	482	640	Circulate
Int.	1	Intermediate - Tail	OH x Csg	0.3132	20%	4,235	3,735	141	188	Circulate
Int.	1	Intermediate - Lead	OH x Csg	0.3132	50%	3,735	461	889	1538	Circulate
Int.	1	Intermediate - Lead	Csg x Csg	0.3627	0%	461	-	97	167	Circulate
Prod.	1	Production - Tail	OH x Csg	0.2291	5%	22,480	8,215	2486	3431	Circulate
Prod.	2	Production 2S - Tail BH	OH x Csg	0.2291	0%	8,215	4,235	475	912	Bradenhead (Post Frac)
Prod.	2	Production 2S - Tail BH	Csg x Csg	0.2608	0%	4,235	3,735	68	130	Bradenhead (Post Frac)

Description	Density (lb/gal)	Yield (ft ³ /sk)	Water (gal/sk)	500psi Time (hh:mm)	Cmt. Class	Accelerator	Retarder	Dispersant	Salt
Intermediate - Lead	12.9	1.73	8.784	15:26	Pozz		x		
Intermediate - Tail	14.8	1.33	6.368	7:11	C	x			
Production - Tail	13.2	1.38	6.686	3:39	H		x	x	x
Production 2S - Tail BH	12.9	1.92	10.41	23:10	C	x			
Surface - Tail	14.8	1.33	6.365	5:26	C	x			

Offline Cementing

Oxy requests a variance to cement the 9.625" and/or 7.625" intermediate casing strings offline in accordance to the approved variance, EC Tran 461365.

The summarized operational sequence will be as follows:

Run casing as per normal operations. While running casing, conduct negative pressure test and confirm integrity of the float equipment (float collar and shoe).

Land casing.

Fill pipe with kill weight fluid, and confirm well is static.

If well Oxy requests a variance to cement the 9.625" and/or 7.625" intermediate casing strings offline in accordance to the approved variance, EC Tran 461365.

The summarized operational sequence will be as follows:

1. Run casing as per normal operations. While running casing, conduct negative pressure test and confirm integrity of the float equipment (float collar and shoe).
2. Land casing.
3. Fill pipe with kill weight fluid, and confirm well is static.
 - a. If well is not static notify BLM and kill well.
 - b. Once well is static notify BLM with intent to proceed with nipple down and offline cementing.
4. Set and pressure test annular packoff.
5. After confirmation of both annular barriers and internal barriers, nipple down BOP and install cap flange. If any barrier fails to test, the BOP stack will not be nipped down until after the cement job is completed.
6. Skid rig to next well on pad.
7. Confirm well is static before removing cap flange.
8. If well is not static notify BLM and kill well prior to cementing or nipping up for further remediation.
9. Install offline cement tool.
10. Rig up cement equipment.
 - a. Notify BLM prior to cement job.
11. Perform cement job.
12. Confirm well is static and floats are holding after cement job.
13. Remove cement equipment, offline cement tools and install night cap with pressure gauge for monitoring.

4. Pressure Control Equipment

BOP installed and tested before drilling which hole?	Size?	Min. Required WP	Type	✓	Tested to:	TVD Depth (ft) per Section:
12.25" Hole	13-5/8"	3M	Annular	✓	70% of working pressure	4233
		3M	Blind Ram	✓	250 psi / 3000 psi	
			Pipe Ram			
			Double Ram	✓		
			Other*			
8.5" Hole	13-5/8"	5M	Annular	✓	70% of working pressure	9153
		5M	Blind Ram	✓	250 psi / 5000 psi	
			Pipe Ram			
			Double Ram	✓		
			Other*			

*Specify if additional ram is utilized

BOP/BOPE will be tested by an independent service company to 250 psi low and the high pressure indicated above per Onshore Order 2 requirements. The System may be upgraded to a higher pressure but still tested to the working pressure listed in the table above. If the system is upgraded all the components installed will be functional and tested.

Pipe rams will be operationally checked each 24 hour period. Blind rams will be operationally checked on each trip out of the hole. These checks will be noted on the daily tour sheets. Other accessories to the BOP equipment will include a Kelly cock and floor safety valve (inside BOP) and choke lines and choke manifold.

	Formation integrity test will be performed per Onshore Order #2.
	On Exploratory wells or on that portion of any well approved for a 5M BOPE system or greater, a pressure integrity test of each casing shoe shall be performed. Will be tested in accordance with Onshore Oil and Gas Order #2 III.B.1.i.
	A variance is requested for the use of a flexible choke line from the BOP to Choke Manifold. See attached for specs and hydrostatic test chart.
Y	Are anchors required by manufacturer?
	<p>A multibowl or a unionized multibowl wellhead system will be employed. The wellhead and connection to the BOPE will meet all API 6A requirements. The BOP will be tested per Onshore Order #2 after installation on the surface casing which will cover testing requirements for a maximum of 30 days. If any seal subject to test pressure is broken the system must be tested. We will test the flange connection of the wellhead with a test port that is directly in the flange. We are proposing that we will run the wellhead through the rotary prior to cementing surface casing as discussed with the BLM on October 8, 2015.</p> <p>See attached schematics.</p>

BOP Break Testing Request

Oxy requests permission to adjust the BOP break testing requirements as per the agreement reached in the OXY/BLM meeting on September 5, 2019.

BOP break test under the following conditions:

- After a full BOP test is conducted
- When skidding to drill an intermediate section where ICP is set into the third Bone Spring or shallower.

If the kill line is broken prior to skid, two tests will be performed.

- 1) Wellhead flange, co-flex hose, kill line connections and upper pipe rams
- 2) Wellhead flange, HCR valve, check valve, upper pipe rams

If the kill line is not broken prior to skid, only one test will be performed.

- 1) Wellhead flange, co-flex hose, check valve, upper pipe rams

5. Mud Program

Section	Depth		Depth - TVD		Type	Weight (ppg)	Viscosity	Water Loss
	From (ft)	To (ft)	From (ft)	To (ft)				
Surface	0	461	0	461	Water-Based Mud	8.6 - 8.8	40-60	N/C
Intermediate	461	4235	461	4233	Saturated Brine-Based or Oil-Based Mud	8.0 - 10.0	35-45	N/C
Production	4235	22480	4233	9153	Water-Based or Oil-Based Mud	8.0 - 9.6	38-50	N/C

Sufficient mud materials to maintain mud properties and meet minimum lost circulation and weight increase requirements will be kept on location at all times. The following is a general list of products: Barite, Bentonite, Gypsum, Lime, Soda Ash, Caustic Soda, Nut Plug, Cedar Fiber, Cotton Seed Hulls, Drilling Paper, Salt Water Clay, CACL2. Oxy will use a closed mud system.

What will be used to monitor the loss or gain of fluid?	PVT/MD Totco/Visual Monitoring
---	--------------------------------

6. Logging and Testing Procedures

Logging, Coring and Testing.	
Yes	Will run GR from TD to surface (horizontal well – vertical portion of hole). Stated logs run will be in the Completion Report and submitted to the BLM.
No	Logs are planned based on well control or offset log information.
No	Drill stem test? If yes, explain
No	Coring? If yes, explain

Additional logs planned		Interval
No	Resistivity	
No	Density	
No	CBL	
Yes	Mud log	Bone Spring – TD
No	PEX	

7. Drilling Conditions

Condition	Specify what type and where?
BH Pressure at deepest TVD	4570 psi
Abnormal Temperature	No
BH Temperature at deepest TVD	154°F

Pump high viscosity sweeps as needed for hole cleaning. The mud system will be monitored visually/manually as well as with an electronic PVT. The necessary mud products for additional weight and fluid loss control will be on location at all times. Appropriately weighted mud will be used to isolate potential gas, oil, and water zones until such time as casing can be cemented into place for zonal

Hydrogen Sulfide (H2S) monitors will be installed prior to drilling out the surface shoe. If H2S is detected in concentrations greater than 100 ppm, the operator will comply with the provisions of Onshore Oil and Gas Order #6. If Hydrogen Sulfide is encountered, measured values and formations will be provided to the BLM.	
N	H2S is present
Y	H2S Plan attached

8. Other facets of operation

	Yes/No
Will the well be drilled with a walking/skidding operation? If yes, describe. We plan to drill the 4 well pad in batch by section: all surface sections, intermediate sections and production sections. The wellhead will be secured with a night cap whenever the rig is not over the well.	Yes
Will more than one drilling rig be used for drilling operations? If yes, describe. Oxy requests the option to contract a Surface Rig to drill, set surface casing, and cement for this well. If the timing between rigs is such that Oxy would not be able to preset surface, the Primary Rig will MIRU and drill the well in its entirety per the APD. Please see the attached document for information on the spudder rig.	Yes

Total Estimated Cuttings Volume: 1968 bbls

Attachments

- Directional Plan
- H2S Contingency Plan
- Flex III Attachments
- Spudder Rig Attachment
- Premium Connection Specs

9. Company Personnel

Name	Title	Office Phone	Mobile Phone
Garrett Granier	Drilling Engineer	713-513-6633	832-265-0581
Filip Krneta	Drilling Engineer Supervisor	713-350-4751	832-244-4980
Simon Benavides	Drilling Superintendent	713-522-8652	281-684-6897
Diego Tellez	Drilling Manager	713-350-4602	713-303-4932

WORKING DRAFT ONLY – Sept 29, 2021

3-String Design – Open Production Casing Annulus

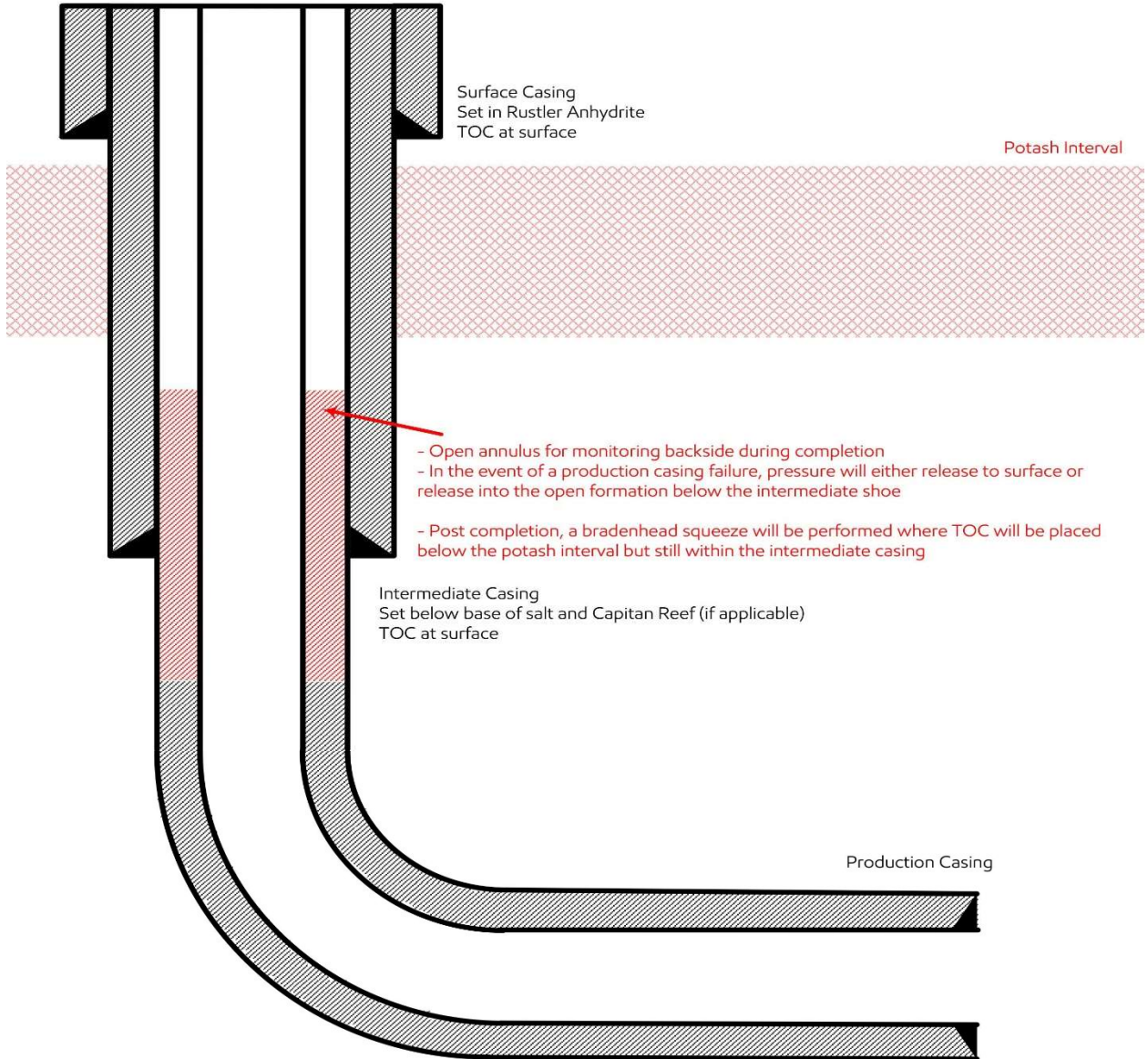


Figure A] 3 – String – Un Cemented Annulus



Project: PRD NM DIRECTIONAL PLANS (NAD 1983)
 Site: Pure Gold MDP1 29_17 Federal Com
 Well: Pure Gold MDP1 29_17 Federal Com 13H
 Wellbore: WB00
 Design: Permitting Plan

PROJECT DETAILS: NM DIRECTIONAL PLANS (NAD 1983)

Geodetic System: US State Plane 1983
 Datum: North American Datum 1983
 Ellipsoid: GRS 1980
 Zone: New Mexico Eastern Zone

System Datum: Mean Sea Level

WELL DETAILS: Pure Gold MDP1 29_17 Federal Com 13H

+N/-S	+E/-W	Northing	Ground Level:	3362.90	Latitude	Longitude
0.00	0.00	462486.25	Easting	708215.48	32° 16' 13.063124 N	103° 47' 36.276200 W

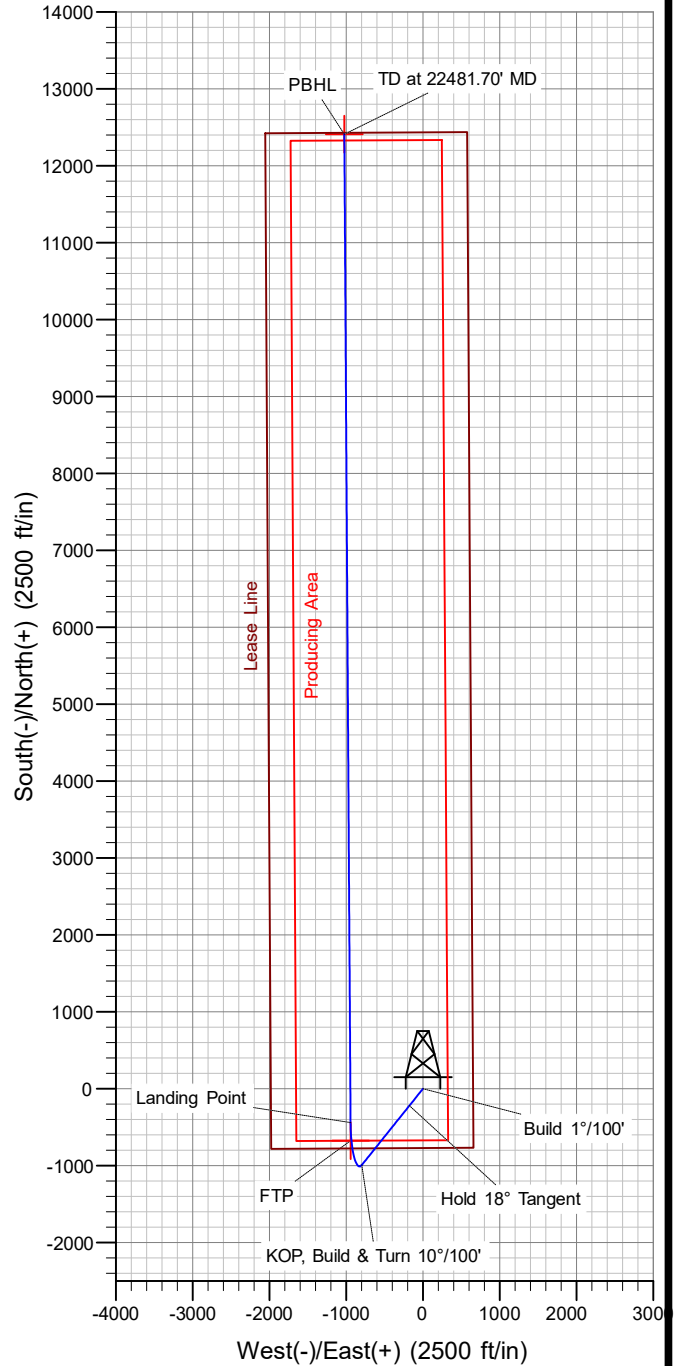
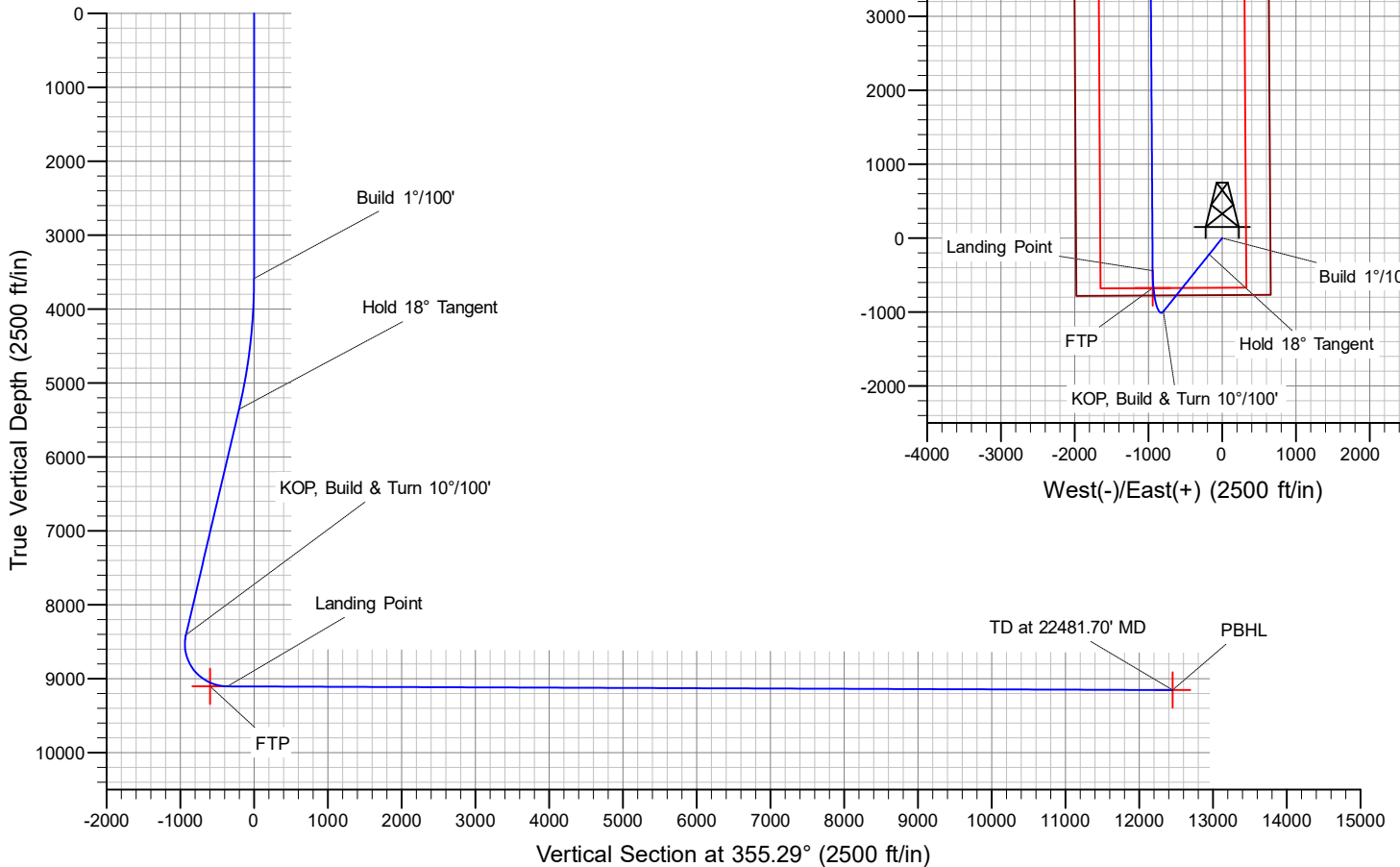
SECTION DETAILS

MD	Inc	Azi	TVD	+N/-S	+E/-W	Dleg	TFace	VSEct	Annotation
0.00	0.00	0.00	0.00	0.00	0.00	0.00	0.00	0.00	
3585.00	0.00	0.00	3585.00	0.00	0.00	0.00	0.00	0.00	Build 1°/100'
5385.00	18.00	218.78	5355.54	-218.61	-175.64	1.00	218.78	-203.44	Hold 18° Tangent
8595.59	18.00	218.78	8408.99	-992.03	-797.04	0.00	0.00	-923.18	KOP, Build & Turn 10°/100'
9632.08	89.78	359.64	9104.90	-438.86	-942.66	10.00	139.49	-359.92	Landing Point
22481.70	89.78	359.64	9154.90	12410.42	-1023.22	0.00	0.00	12452.53	TD at 22481.70' MD



Azimuths to Grid North
 True North: -0.29°
 Magnetic North: 6.58°

Magnetic Field
 Strength: 48047.0nT
 Dip Angle: 60.00°
 Date: 8/23/2018
 Model: HDGM_FILE



OXY

PRD NM DIRECTIONAL PLANS (NAD 1983)

Pure Gold MDP1 29_17 Federal Com

Pure Gold MDP1 29_17 Federal Com 13H

WB00

Plan: Permitting Plan

Standard Planning Report

30 November, 2021

OXY Planning Report

Database:	HOPSPP	Local Co-ordinate Reference:	Well Pure Gold MDP1 29_17 Federal Com 13H
Company:	ENGINEERING DESIGNS	TVD Reference:	RKB=25' @ 3387.90ft
Project:	PRD NM DIRECTIONAL PLANS (NAD 1983)	MD Reference:	RKB=25' @ 3387.90ft
Site:	Pure Gold MDP1 29_17 Federal Com	North Reference:	Grid
Well:	Pure Gold MDP1 29_17 Federal Com 13H	Survey Calculation Method:	Minimum Curvature
Wellbore:	WB00		
Design:	Permitting Plan		

Project PRD NM DIRECTIONAL PLANS (NAD 1983)			
Map System:	US State Plane 1983	System Datum:	Mean Sea Level
Geo Datum:	North American Datum 1983		
Map Zone:	New Mexico Eastern Zone		Using geodetic scale factor

Site Pure Gold MDP1 29_17 Federal Com			
Site Position:	Northing:	Latitude:	
From: Map	462,387.11 usft	32° 16' 12.264239 N	
Position Uncertainty:	Easting:	Longitude:	
50.00 ft	704,515.79 usft	103° 48' 19.372708 W	
	Slot Radius:	Grid Convergence:	0.28 °
	13.200 in		

Well Pure Gold MDP1 29_17 Federal Com 13H			
Well Position	+N/-S	Northing:	Latitude:
	99.15 ft	462,486.25 usft	32° 16' 13.063124 N
	+E/-W	Easting:	Longitude:
	3,699.92 ft	708,215.48 usft	103° 47' 36.276200 W
Position Uncertainty	Wellhead Elevation:	Ground Level:	
1.00 ft	0.00 ft	3,362.90 ft	

Wellbore WB00					
Magnetics	Model Name	Sample Date	Declination (°)	Dip Angle (°)	Field Strength (nT)
	HDGM_FILE	8/23/2018	6.87	60.00	48,047.00000000

Design Permitting Plan				
Audit Notes:				
Version:	Phase:	PROTOTYPE	Tie On Depth:	0.00
Vertical Section:	Depth From (TVD) (ft)	+N/-S (ft)	+E/-W (ft)	Direction (°)
	1.60	0.00	0.00	355.29

Plan Survey Tool Program		Date 11/30/2021		
Depth From (ft)	Depth To (ft)	Survey (Wellbore)	Tool Name	Remarks
1	0.00	22,481.70 Permitting Plan (WB00)	B001Mb_MWD+HRGM OWSG MWD + HRGM	

Plan Sections										
Measured Depth (ft)	Inclination (°)	Azimuth (°)	Vertical Depth (ft)	+N/-S (ft)	+E/-W (ft)	Dogleg Rate (°/100ft)	Build Rate (°/100ft)	Turn Rate (°/100ft)	TFO (°)	Target
0.00	0.00	0.00	0.00	0.00	0.00	0.00	0.00	0.00	0.00	
3,585.00	0.00	0.00	3,585.00	0.00	0.00	0.00	0.00	0.00	0.00	
5,385.00	18.00	218.78	5,355.54	-218.61	-175.64	1.00	1.00	0.00	218.78	
8,595.59	18.00	218.78	8,408.99	-992.03	-797.04	0.00	0.00	0.00	0.00	
9,632.08	89.78	359.64	9,104.90	-438.86	-942.66	10.00	6.93	13.59	139.49	
22,481.70	89.78	359.64	9,154.90	12,410.42	-1,023.22	0.00	0.00	0.00	0.00	PBHL (Pure Gold)

OXY

Planning Report

Database:	HOPSPP	Local Co-ordinate Reference:	Well Pure Gold MDP1 29_17 Federal Com 13H
Company:	ENGINEERING DESIGNS	TVD Reference:	RKB=25' @ 3387.90ft
Project:	PRD NM DIRECTIONAL PLANS (NAD 1983)	MD Reference:	RKB=25' @ 3387.90ft
Site:	Pure Gold MDP1 29_17 Federal Com	North Reference:	Grid
Well:	Pure Gold MDP1 29_17 Federal Com 13H	Survey Calculation Method:	Minimum Curvature
Wellbore:	WB00		
Design:	Permitting Plan		

Planned Survey									
Measured Depth (ft)	Inclination (°)	Azimuth (°)	Vertical Depth (ft)	+N/-S (ft)	+E/-W (ft)	Vertical Section (ft)	Dogleg Rate (°/100ft)	Build Rate (°/100ft)	Turn Rate (°/100ft)
0.00	0.00	0.00	0.00	0.00	0.00	0.00	0.00	0.00	0.00
100.00	0.00	0.00	100.00	0.00	0.00	0.00	0.00	0.00	0.00
200.00	0.00	0.00	200.00	0.00	0.00	0.00	0.00	0.00	0.00
300.00	0.00	0.00	300.00	0.00	0.00	0.00	0.00	0.00	0.00
400.00	0.00	0.00	400.00	0.00	0.00	0.00	0.00	0.00	0.00
500.00	0.00	0.00	500.00	0.00	0.00	0.00	0.00	0.00	0.00
600.00	0.00	0.00	600.00	0.00	0.00	0.00	0.00	0.00	0.00
700.00	0.00	0.00	700.00	0.00	0.00	0.00	0.00	0.00	0.00
800.00	0.00	0.00	800.00	0.00	0.00	0.00	0.00	0.00	0.00
900.00	0.00	0.00	900.00	0.00	0.00	0.00	0.00	0.00	0.00
1,000.00	0.00	0.00	1,000.00	0.00	0.00	0.00	0.00	0.00	0.00
1,100.00	0.00	0.00	1,100.00	0.00	0.00	0.00	0.00	0.00	0.00
1,200.00	0.00	0.00	1,200.00	0.00	0.00	0.00	0.00	0.00	0.00
1,300.00	0.00	0.00	1,300.00	0.00	0.00	0.00	0.00	0.00	0.00
1,400.00	0.00	0.00	1,400.00	0.00	0.00	0.00	0.00	0.00	0.00
1,500.00	0.00	0.00	1,500.00	0.00	0.00	0.00	0.00	0.00	0.00
1,600.00	0.00	0.00	1,600.00	0.00	0.00	0.00	0.00	0.00	0.00
1,700.00	0.00	0.00	1,700.00	0.00	0.00	0.00	0.00	0.00	0.00
1,800.00	0.00	0.00	1,800.00	0.00	0.00	0.00	0.00	0.00	0.00
1,900.00	0.00	0.00	1,900.00	0.00	0.00	0.00	0.00	0.00	0.00
2,000.00	0.00	0.00	2,000.00	0.00	0.00	0.00	0.00	0.00	0.00
2,100.00	0.00	0.00	2,100.00	0.00	0.00	0.00	0.00	0.00	0.00
2,200.00	0.00	0.00	2,200.00	0.00	0.00	0.00	0.00	0.00	0.00
2,300.00	0.00	0.00	2,300.00	0.00	0.00	0.00	0.00	0.00	0.00
2,400.00	0.00	0.00	2,400.00	0.00	0.00	0.00	0.00	0.00	0.00
2,500.00	0.00	0.00	2,500.00	0.00	0.00	0.00	0.00	0.00	0.00
2,600.00	0.00	0.00	2,600.00	0.00	0.00	0.00	0.00	0.00	0.00
2,700.00	0.00	0.00	2,700.00	0.00	0.00	0.00	0.00	0.00	0.00
2,800.00	0.00	0.00	2,800.00	0.00	0.00	0.00	0.00	0.00	0.00
2,900.00	0.00	0.00	2,900.00	0.00	0.00	0.00	0.00	0.00	0.00
3,000.00	0.00	0.00	3,000.00	0.00	0.00	0.00	0.00	0.00	0.00
3,100.00	0.00	0.00	3,100.00	0.00	0.00	0.00	0.00	0.00	0.00
3,200.00	0.00	0.00	3,200.00	0.00	0.00	0.00	0.00	0.00	0.00
3,300.00	0.00	0.00	3,300.00	0.00	0.00	0.00	0.00	0.00	0.00
3,400.00	0.00	0.00	3,400.00	0.00	0.00	0.00	0.00	0.00	0.00
3,500.00	0.00	0.00	3,500.00	0.00	0.00	0.00	0.00	0.00	0.00
3,585.00	0.00	0.00	3,585.00	0.00	0.00	0.00	0.00	0.00	0.00
3,600.00	0.15	218.78	3,600.00	-0.02	-0.01	-0.01	1.00	1.00	0.00
3,700.00	1.15	218.78	3,699.99	-0.90	-0.72	-0.84	1.00	1.00	0.00
3,800.00	2.15	218.78	3,799.95	-3.14	-2.53	-2.93	1.00	1.00	0.00
3,900.00	3.15	218.78	3,899.84	-6.75	-5.42	-6.28	1.00	1.00	0.00
4,000.00	4.15	218.78	3,999.64	-11.71	-9.41	-10.90	1.00	1.00	0.00
4,100.00	5.15	218.78	4,099.31	-18.03	-14.49	-16.78	1.00	1.00	0.00
4,200.00	6.15	218.78	4,198.82	-25.71	-20.65	-23.92	1.00	1.00	0.00
4,300.00	7.15	218.78	4,298.15	-34.73	-27.91	-32.32	1.00	1.00	0.00
4,400.00	8.15	218.78	4,397.25	-45.11	-36.24	-41.98	1.00	1.00	0.00
4,500.00	9.15	218.78	4,496.12	-56.83	-45.66	-52.89	1.00	1.00	0.00
4,600.00	10.15	218.78	4,594.70	-69.90	-56.16	-65.05	1.00	1.00	0.00
4,700.00	11.15	218.78	4,692.98	-84.31	-67.74	-78.46	1.00	1.00	0.00
4,800.00	12.15	218.78	4,790.91	-100.05	-80.39	-93.11	1.00	1.00	0.00
4,900.00	13.15	218.78	4,888.49	-117.12	-94.10	-108.99	1.00	1.00	0.00
5,000.00	14.15	218.78	4,985.66	-135.52	-108.88	-126.11	1.00	1.00	0.00
5,100.00	15.15	218.78	5,082.41	-155.23	-124.72	-144.46	1.00	1.00	0.00
5,200.00	16.15	218.78	5,178.70	-176.26	-141.62	-164.03	1.00	1.00	0.00

OXY

Planning Report

Database:	HOPSPP	Local Co-ordinate Reference:	Well Pure Gold MDP1 29_17 Federal Com 13H
Company:	ENGINEERING DESIGNS	TVD Reference:	RKB=25' @ 3387.90ft
Project:	PRD NM DIRECTIONAL PLANS (NAD 1983)	MD Reference:	RKB=25' @ 3387.90ft
Site:	Pure Gold MDP1 29_17 Federal Com	North Reference:	Grid
Well:	Pure Gold MDP1 29_17 Federal Com 13H	Survey Calculation Method:	Minimum Curvature
Wellbore:	WB00		
Design:	Permitting Plan		

Planned Survey									
Measured Depth (ft)	Inclination (°)	Azimuth (°)	Vertical Depth (ft)	+N/-S (ft)	+E/-W (ft)	Vertical Section (ft)	Dogleg Rate (°/100ft)	Build Rate (°/100ft)	Turn Rate (°/100ft)
5,300.00	17.15	218.78	5,274.51	-198.60	-159.56	-184.82	1.00	1.00	0.00
5,385.00	18.00	218.78	5,355.54	-218.61	-175.64	-203.44	1.00	1.00	0.00
5,400.00	18.00	218.78	5,369.80	-222.22	-178.54	-206.80	0.00	0.00	0.00
5,500.00	18.00	218.78	5,464.91	-246.31	-197.90	-229.22	0.00	0.00	0.00
5,600.00	18.00	218.78	5,560.01	-270.40	-217.25	-251.64	0.00	0.00	0.00
5,700.00	18.00	218.78	5,655.12	-294.49	-236.61	-274.05	0.00	0.00	0.00
5,800.00	18.00	218.78	5,750.23	-318.58	-255.96	-296.47	0.00	0.00	0.00
5,900.00	18.00	218.78	5,845.33	-342.67	-275.32	-318.89	0.00	0.00	0.00
6,000.00	18.00	218.78	5,940.44	-366.76	-294.67	-341.31	0.00	0.00	0.00
6,100.00	18.00	218.78	6,035.54	-390.85	-314.03	-363.72	0.00	0.00	0.00
6,200.00	18.00	218.78	6,130.65	-414.94	-333.38	-386.14	0.00	0.00	0.00
6,300.00	18.00	218.78	6,225.75	-439.03	-352.74	-408.56	0.00	0.00	0.00
6,400.00	18.00	218.78	6,320.86	-463.12	-372.09	-430.98	0.00	0.00	0.00
6,500.00	18.00	218.78	6,415.97	-487.21	-391.44	-453.40	0.00	0.00	0.00
6,600.00	18.00	218.78	6,511.07	-511.30	-410.80	-475.81	0.00	0.00	0.00
6,700.00	18.00	218.78	6,606.18	-535.39	-430.15	-498.23	0.00	0.00	0.00
6,800.00	18.00	218.78	6,701.28	-559.48	-449.51	-520.65	0.00	0.00	0.00
6,900.00	18.00	218.78	6,796.39	-583.57	-468.86	-543.07	0.00	0.00	0.00
7,000.00	18.00	218.78	6,891.49	-607.66	-488.22	-565.48	0.00	0.00	0.00
7,100.00	18.00	218.78	6,986.60	-631.74	-507.57	-587.90	0.00	0.00	0.00
7,200.00	18.00	218.78	7,081.70	-655.83	-526.93	-610.32	0.00	0.00	0.00
7,300.00	18.00	218.78	7,176.81	-679.92	-546.28	-632.74	0.00	0.00	0.00
7,400.00	18.00	218.78	7,271.92	-704.01	-565.64	-655.16	0.00	0.00	0.00
7,500.00	18.00	218.78	7,367.02	-728.10	-584.99	-677.57	0.00	0.00	0.00
7,600.00	18.00	218.78	7,462.13	-752.19	-604.35	-699.99	0.00	0.00	0.00
7,700.00	18.00	218.78	7,557.23	-776.28	-623.70	-722.41	0.00	0.00	0.00
7,800.00	18.00	218.78	7,652.34	-800.37	-643.06	-744.83	0.00	0.00	0.00
7,900.00	18.00	218.78	7,747.44	-824.46	-662.41	-767.25	0.00	0.00	0.00
8,000.00	18.00	218.78	7,842.55	-848.55	-681.77	-789.66	0.00	0.00	0.00
8,100.00	18.00	218.78	7,937.66	-872.64	-701.12	-812.08	0.00	0.00	0.00
8,200.00	18.00	218.78	8,032.76	-896.73	-720.47	-834.50	0.00	0.00	0.00
8,300.00	18.00	218.78	8,127.87	-920.82	-739.83	-856.92	0.00	0.00	0.00
8,400.00	18.00	218.78	8,222.97	-944.91	-759.18	-879.33	0.00	0.00	0.00
8,500.00	18.00	218.78	8,318.08	-969.00	-778.54	-901.75	0.00	0.00	0.00
8,595.59	18.00	218.78	8,408.99	-992.03	-797.04	-923.18	0.00	0.00	0.00
8,600.00	17.67	219.72	8,413.19	-993.07	-797.89	-924.15	10.00	-7.55	21.40
8,700.00	12.07	253.03	8,509.97	-1,007.83	-817.64	-937.24	10.00	-5.60	33.31
8,800.00	13.29	299.51	8,607.77	-1,005.22	-837.70	-932.99	10.00	1.22	46.48
8,900.00	20.12	325.67	8,703.63	-985.30	-857.45	-911.52	10.00	6.83	26.16
9,000.00	28.81	337.81	8,794.62	-948.70	-876.29	-873.49	10.00	8.69	12.14
9,100.00	38.11	344.54	8,877.99	-896.51	-893.66	-820.05	10.00	9.30	6.73
9,200.00	47.66	348.93	8,951.19	-830.33	-909.02	-752.83	10.00	9.55	4.38
9,300.00	57.33	352.14	9,012.01	-752.17	-921.91	-673.88	10.00	9.67	3.21
9,400.00	67.07	354.71	9,058.60	-664.40	-931.93	-585.58	10.00	9.74	2.58
9,500.00	76.84	356.94	9,089.54	-569.69	-938.79	-490.63	10.00	9.77	2.23
9,600.00	86.63	359.00	9,103.90	-470.91	-942.27	-391.90	10.00	9.79	2.05
9,632.08	89.78	359.64	9,104.90	-438.86	-942.66	-359.92	10.00	9.80	2.01
9,700.00	89.78	359.64	9,105.16	-370.94	-943.08	-292.19	0.00	0.00	0.00
9,800.00	89.78	359.64	9,105.55	-270.94	-943.71	-192.48	0.00	0.00	0.00
9,900.00	89.78	359.64	9,105.94	-170.94	-944.34	-92.77	0.00	0.00	0.00
10,000.00	89.78	359.64	9,106.33	-70.95	-944.96	6.94	0.00	0.00	0.00
10,100.00	89.78	359.64	9,106.72	29.05	-945.59	106.65	0.00	0.00	0.00
10,200.00	89.78	359.64	9,107.11	129.05	-946.22	206.36	0.00	0.00	0.00
10,300.00	89.78	359.64	9,107.50	229.04	-946.84	306.07	0.00	0.00	0.00

OXY Planning Report

Database:	HOPSPP	Local Co-ordinate Reference:	Well Pure Gold MDP1 29_17 Federal Com 13H
Company:	ENGINEERING DESIGNS	TVD Reference:	RKB=25' @ 3387.90ft
Project:	PRD NM DIRECTIONAL PLANS (NAD 1983)	MD Reference:	RKB=25' @ 3387.90ft
Site:	Pure Gold MDP1 29_17 Federal Com	North Reference:	Grid
Well:	Pure Gold MDP1 29_17 Federal Com 13H	Survey Calculation Method:	Minimum Curvature
Wellbore:	WB00		
Design:	Permitting Plan		

Planned Survey										
Measured Depth (ft)	Inclination (°)	Azimuth (°)	Vertical Depth (ft)	+N/-S (ft)	+E/-W (ft)	Vertical Section (ft)	Dogleg Rate (°/100ft)	Build Rate (°/100ft)	Turn Rate (°/100ft)	
10,400.00	89.78	359.64	9,107.89	329.04	-947.47	405.78	0.00	0.00	0.00	
10,500.00	89.78	359.64	9,108.28	429.04	-948.10	505.49	0.00	0.00	0.00	
10,600.00	89.78	359.64	9,108.67	529.04	-948.72	605.20	0.00	0.00	0.00	
10,700.00	89.78	359.64	9,109.06	629.03	-949.35	704.91	0.00	0.00	0.00	
10,800.00	89.78	359.64	9,109.44	729.03	-949.98	804.62	0.00	0.00	0.00	
10,900.00	89.78	359.64	9,109.83	829.03	-950.61	904.33	0.00	0.00	0.00	
11,000.00	89.78	359.64	9,110.22	929.03	-951.23	1,004.04	0.00	0.00	0.00	
11,100.00	89.78	359.64	9,110.61	1,029.02	-951.86	1,103.75	0.00	0.00	0.00	
11,200.00	89.78	359.64	9,111.00	1,129.02	-952.49	1,203.47	0.00	0.00	0.00	
11,300.00	89.78	359.64	9,111.39	1,229.02	-953.11	1,303.18	0.00	0.00	0.00	
11,400.00	89.78	359.64	9,111.78	1,329.02	-953.74	1,402.89	0.00	0.00	0.00	
11,500.00	89.78	359.64	9,112.17	1,429.01	-954.37	1,502.60	0.00	0.00	0.00	
11,600.00	89.78	359.64	9,112.56	1,529.01	-954.99	1,602.31	0.00	0.00	0.00	
11,700.00	89.78	359.64	9,112.95	1,629.01	-955.62	1,702.02	0.00	0.00	0.00	
11,800.00	89.78	359.64	9,113.34	1,729.00	-956.25	1,801.73	0.00	0.00	0.00	
11,900.00	89.78	359.64	9,113.73	1,829.00	-956.88	1,901.44	0.00	0.00	0.00	
12,000.00	89.78	359.64	9,114.11	1,929.00	-957.50	2,001.15	0.00	0.00	0.00	
12,100.00	89.78	359.64	9,114.50	2,029.00	-958.13	2,100.86	0.00	0.00	0.00	
12,200.00	89.78	359.64	9,114.89	2,128.99	-958.76	2,200.57	0.00	0.00	0.00	
12,300.00	89.78	359.64	9,115.28	2,228.99	-959.38	2,300.28	0.00	0.00	0.00	
12,400.00	89.78	359.64	9,115.67	2,328.99	-960.01	2,399.99	0.00	0.00	0.00	
12,500.00	89.78	359.64	9,116.06	2,428.99	-960.64	2,499.70	0.00	0.00	0.00	
12,600.00	89.78	359.64	9,116.45	2,528.98	-961.26	2,599.41	0.00	0.00	0.00	
12,700.00	89.78	359.64	9,116.84	2,628.98	-961.89	2,699.13	0.00	0.00	0.00	
12,800.00	89.78	359.64	9,117.23	2,728.98	-962.52	2,798.84	0.00	0.00	0.00	
12,900.00	89.78	359.64	9,117.62	2,828.97	-963.15	2,898.55	0.00	0.00	0.00	
13,000.00	89.78	359.64	9,118.01	2,928.97	-963.77	2,998.26	0.00	0.00	0.00	
13,100.00	89.78	359.64	9,118.39	3,028.97	-964.40	3,097.97	0.00	0.00	0.00	
13,200.00	89.78	359.64	9,118.78	3,128.97	-965.03	3,197.68	0.00	0.00	0.00	
13,300.00	89.78	359.64	9,119.17	3,228.96	-965.65	3,297.39	0.00	0.00	0.00	
13,400.00	89.78	359.64	9,119.56	3,328.96	-966.28	3,397.10	0.00	0.00	0.00	
13,500.00	89.78	359.64	9,119.95	3,428.96	-966.91	3,496.81	0.00	0.00	0.00	
13,600.00	89.78	359.64	9,120.34	3,528.96	-967.53	3,596.52	0.00	0.00	0.00	
13,700.00	89.78	359.64	9,120.73	3,628.95	-968.16	3,696.23	0.00	0.00	0.00	
13,800.00	89.78	359.64	9,121.12	3,728.95	-968.79	3,795.94	0.00	0.00	0.00	
13,900.00	89.78	359.64	9,121.51	3,828.95	-969.42	3,895.65	0.00	0.00	0.00	
14,000.00	89.78	359.64	9,121.90	3,928.94	-970.04	3,995.36	0.00	0.00	0.00	
14,100.00	89.78	359.64	9,122.29	4,028.94	-970.67	4,095.07	0.00	0.00	0.00	
14,200.00	89.78	359.64	9,122.67	4,128.94	-971.30	4,194.79	0.00	0.00	0.00	
14,300.00	89.78	359.64	9,123.06	4,228.94	-971.92	4,294.50	0.00	0.00	0.00	
14,400.00	89.78	359.64	9,123.45	4,328.93	-972.55	4,394.21	0.00	0.00	0.00	
14,500.00	89.78	359.64	9,123.84	4,428.93	-973.18	4,493.92	0.00	0.00	0.00	
14,600.00	89.78	359.64	9,124.23	4,528.93	-973.80	4,593.63	0.00	0.00	0.00	
14,700.00	89.78	359.64	9,124.62	4,628.93	-974.43	4,693.34	0.00	0.00	0.00	
14,800.00	89.78	359.64	9,125.01	4,728.92	-975.06	4,793.05	0.00	0.00	0.00	
14,900.00	89.78	359.64	9,125.40	4,828.92	-975.69	4,892.76	0.00	0.00	0.00	
15,000.00	89.78	359.64	9,125.79	4,928.92	-976.31	4,992.47	0.00	0.00	0.00	
15,100.00	89.78	359.64	9,126.18	5,028.91	-976.94	5,092.18	0.00	0.00	0.00	
15,200.00	89.78	359.64	9,126.57	5,128.91	-977.57	5,191.89	0.00	0.00	0.00	
15,300.00	89.78	359.64	9,126.96	5,228.91	-978.19	5,291.60	0.00	0.00	0.00	
15,400.00	89.78	359.64	9,127.34	5,328.91	-978.82	5,391.31	0.00	0.00	0.00	
15,500.00	89.78	359.64	9,127.73	5,428.90	-979.45	5,491.02	0.00	0.00	0.00	
15,600.00	89.78	359.64	9,128.12	5,528.90	-980.07	5,590.73	0.00	0.00	0.00	
15,700.00	89.78	359.64	9,128.51	5,628.90	-980.70	5,690.45	0.00	0.00	0.00	

OXY

Planning Report

Database:	HOPSPP	Local Co-ordinate Reference:	Well Pure Gold MDP1 29_17 Federal Com 13H
Company:	ENGINEERING DESIGNS	TVD Reference:	RKB=25' @ 3387.90ft
Project:	PRD NM DIRECTIONAL PLANS (NAD 1983)	MD Reference:	RKB=25' @ 3387.90ft
Site:	Pure Gold MDP1 29_17 Federal Com	North Reference:	Grid
Well:	Pure Gold MDP1 29_17 Federal Com 13H	Survey Calculation Method:	Minimum Curvature
Wellbore:	WB00		
Design:	Permitting Plan		

Planned Survey									
Measured Depth (ft)	Inclination (°)	Azimuth (°)	Vertical Depth (ft)	+N/-S (ft)	+E/-W (ft)	Vertical Section (ft)	Dogleg Rate (°/100ft)	Build Rate (°/100ft)	Turn Rate (°/100ft)
15,800.00	89.78	359.64	9,128.90	5,728.90	-981.33	5,790.16	0.00	0.00	0.00
15,900.00	89.78	359.64	9,129.29	5,828.89	-981.96	5,889.87	0.00	0.00	0.00
16,000.00	89.78	359.64	9,129.68	5,928.89	-982.58	5,989.58	0.00	0.00	0.00
16,100.00	89.78	359.64	9,130.07	6,028.89	-983.21	6,089.29	0.00	0.00	0.00
16,200.00	89.78	359.64	9,130.46	6,128.88	-983.84	6,189.00	0.00	0.00	0.00
16,300.00	89.78	359.64	9,130.85	6,228.88	-984.46	6,288.71	0.00	0.00	0.00
16,400.00	89.78	359.64	9,131.24	6,328.88	-985.09	6,388.42	0.00	0.00	0.00
16,500.00	89.78	359.64	9,131.62	6,428.88	-985.72	6,488.13	0.00	0.00	0.00
16,600.00	89.78	359.64	9,132.01	6,528.87	-986.34	6,587.84	0.00	0.00	0.00
16,700.00	89.78	359.64	9,132.40	6,628.87	-986.97	6,687.55	0.00	0.00	0.00
16,800.00	89.78	359.64	9,132.79	6,728.87	-987.60	6,787.26	0.00	0.00	0.00
16,900.00	89.78	359.64	9,133.18	6,828.87	-988.23	6,886.97	0.00	0.00	0.00
17,000.00	89.78	359.64	9,133.57	6,928.86	-988.85	6,986.68	0.00	0.00	0.00
17,100.00	89.78	359.64	9,133.96	7,028.86	-989.48	7,086.39	0.00	0.00	0.00
17,200.00	89.78	359.64	9,134.35	7,128.86	-990.11	7,186.11	0.00	0.00	0.00
17,300.00	89.78	359.64	9,134.74	7,228.85	-990.73	7,285.82	0.00	0.00	0.00
17,400.00	89.78	359.64	9,135.13	7,328.85	-991.36	7,385.53	0.00	0.00	0.00
17,500.00	89.78	359.64	9,135.52	7,428.85	-991.99	7,485.24	0.00	0.00	0.00
17,600.00	89.78	359.64	9,135.90	7,528.85	-992.61	7,584.95	0.00	0.00	0.00
17,700.00	89.78	359.64	9,136.29	7,628.84	-993.24	7,684.66	0.00	0.00	0.00
17,800.00	89.78	359.64	9,136.68	7,728.84	-993.87	7,784.37	0.00	0.00	0.00
17,900.00	89.78	359.64	9,137.07	7,828.84	-994.50	7,884.08	0.00	0.00	0.00
18,000.00	89.78	359.64	9,137.46	7,928.84	-995.12	7,983.79	0.00	0.00	0.00
18,100.00	89.78	359.64	9,137.85	8,028.83	-995.75	8,083.50	0.00	0.00	0.00
18,200.00	89.78	359.64	9,138.24	8,128.83	-996.38	8,183.21	0.00	0.00	0.00
18,300.00	89.78	359.64	9,138.63	8,228.83	-997.00	8,282.92	0.00	0.00	0.00
18,400.00	89.78	359.64	9,139.02	8,328.82	-997.63	8,382.63	0.00	0.00	0.00
18,500.00	89.78	359.64	9,139.41	8,428.82	-998.26	8,482.34	0.00	0.00	0.00
18,600.00	89.78	359.64	9,139.80	8,528.82	-998.88	8,582.05	0.00	0.00	0.00
18,700.00	89.78	359.64	9,140.19	8,628.82	-999.51	8,681.77	0.00	0.00	0.00
18,800.00	89.78	359.64	9,140.57	8,728.81	-1,000.14	8,781.48	0.00	0.00	0.00
18,900.00	89.78	359.64	9,140.96	8,828.81	-1,000.77	8,881.19	0.00	0.00	0.00
19,000.00	89.78	359.64	9,141.35	8,928.81	-1,001.39	8,980.90	0.00	0.00	0.00
19,100.00	89.78	359.64	9,141.74	9,028.81	-1,002.02	9,080.61	0.00	0.00	0.00
19,200.00	89.78	359.64	9,142.13	9,128.80	-1,002.65	9,180.32	0.00	0.00	0.00
19,300.00	89.78	359.64	9,142.52	9,228.80	-1,003.27	9,280.03	0.00	0.00	0.00
19,400.00	89.78	359.64	9,142.91	9,328.80	-1,003.90	9,379.74	0.00	0.00	0.00
19,500.00	89.78	359.64	9,143.30	9,428.79	-1,004.53	9,479.45	0.00	0.00	0.00
19,600.00	89.78	359.64	9,143.69	9,528.79	-1,005.15	9,579.16	0.00	0.00	0.00
19,700.00	89.78	359.64	9,144.08	9,628.79	-1,005.78	9,678.87	0.00	0.00	0.00
19,800.00	89.78	359.64	9,144.47	9,728.79	-1,006.41	9,778.58	0.00	0.00	0.00
19,900.00	89.78	359.64	9,144.85	9,828.78	-1,007.04	9,878.29	0.00	0.00	0.00
20,000.00	89.78	359.64	9,145.24	9,928.78	-1,007.66	9,978.00	0.00	0.00	0.00
20,100.00	89.78	359.64	9,145.63	10,028.78	-1,008.29	10,077.71	0.00	0.00	0.00
20,200.00	89.78	359.64	9,146.02	10,128.78	-1,008.92	10,177.43	0.00	0.00	0.00
20,300.00	89.78	359.64	9,146.41	10,228.77	-1,009.54	10,277.14	0.00	0.00	0.00
20,400.00	89.78	359.64	9,146.80	10,328.77	-1,010.17	10,376.85	0.00	0.00	0.00
20,500.00	89.78	359.64	9,147.19	10,428.77	-1,010.80	10,476.56	0.00	0.00	0.00
20,600.00	89.78	359.64	9,147.58	10,528.76	-1,011.42	10,576.27	0.00	0.00	0.00
20,700.00	89.78	359.64	9,147.97	10,628.76	-1,012.05	10,675.98	0.00	0.00	0.00
20,800.00	89.78	359.64	9,148.36	10,728.76	-1,012.68	10,775.69	0.00	0.00	0.00
20,900.00	89.78	359.64	9,148.75	10,828.76	-1,013.31	10,875.40	0.00	0.00	0.00
21,000.00	89.78	359.64	9,149.13	10,928.75	-1,013.93	10,975.11	0.00	0.00	0.00
21,100.00	89.78	359.64	9,149.52	11,028.75	-1,014.56	11,074.82	0.00	0.00	0.00

OXY Planning Report

Database:	HOPSPP	Local Co-ordinate Reference:	Well Pure Gold MDP1 29_17 Federal Com 13H
Company:	ENGINEERING DESIGNS	TVD Reference:	RKB=25' @ 3387.90ft
Project:	PRD NM DIRECTIONAL PLANS (NAD 1983)	MD Reference:	RKB=25' @ 3387.90ft
Site:	Pure Gold MDP1 29_17 Federal Com	North Reference:	Grid
Well:	Pure Gold MDP1 29_17 Federal Com 13H	Survey Calculation Method:	Minimum Curvature
Wellbore:	WB00		
Design:	Permitting Plan		

Planned Survey									
Measured Depth (ft)	Inclination (°)	Azimuth (°)	Vertical Depth (ft)	+N/-S (ft)	+E/-W (ft)	Vertical Section (ft)	Dogleg Rate (°/100ft)	Build Rate (°/100ft)	Turn Rate (°/100ft)
21,200.00	89.78	359.64	9,149.91	11,128.75	-1,015.19	11,174.53	0.00	0.00	0.00
21,300.00	89.78	359.64	9,150.30	11,228.75	-1,015.81	11,274.24	0.00	0.00	0.00
21,400.00	89.78	359.64	9,150.69	11,328.74	-1,016.44	11,373.95	0.00	0.00	0.00
21,500.00	89.78	359.64	9,151.08	11,428.74	-1,017.07	11,473.66	0.00	0.00	0.00
21,600.00	89.78	359.64	9,151.47	11,528.74	-1,017.69	11,573.37	0.00	0.00	0.00
21,700.00	89.78	359.64	9,151.86	11,628.73	-1,018.32	11,673.09	0.00	0.00	0.00
21,800.00	89.78	359.64	9,152.25	11,728.73	-1,018.95	11,772.80	0.00	0.00	0.00
21,900.00	89.78	359.64	9,152.64	11,828.73	-1,019.58	11,872.51	0.00	0.00	0.00
22,000.00	89.78	359.64	9,153.03	11,928.73	-1,020.20	11,972.22	0.00	0.00	0.00
22,100.00	89.78	359.64	9,153.41	12,028.72	-1,020.83	12,071.93	0.00	0.00	0.00
22,200.00	89.78	359.64	9,153.80	12,128.72	-1,021.46	12,171.64	0.00	0.00	0.00
22,300.00	89.78	359.64	9,154.19	12,228.72	-1,022.08	12,271.35	0.00	0.00	0.00
22,400.00	89.78	359.64	9,154.58	12,328.72	-1,022.71	12,371.06	0.00	0.00	0.00
22,481.70	89.78	359.64	9,154.90	12,410.42	-1,023.22	12,452.53	0.00	0.00	0.00

Design Targets									
Target Name	Dip Angle (°)	Dip Dir. (°)	TVD (ft)	+N/-S (ft)	+E/-W (ft)	Northing (usft)	Easting (usft)	Latitude	Longitude
FTP (Pure Gold MDP1 - hit/miss target - Shape - Point	0.00	0.00	9,104.90	-674.89	-941.65	461,811.40	707,273.89	32° 16' 6.431855 N	103° 47' 47.282348
- plan misses target center by 47.77ft at 9405.07ft MD (9060.56 TVD, -659.74 N, -932.36 E)									
PBHL (Pure Gold - plan hits target center - Point	0.00	0.00	9,154.90	12,410.42	-1,023.22	474,895.91	707,192.32	32° 18' 15.914074 N	103° 47' 47.469698

Formations						
Measured Depth (ft)	Vertical Depth (ft)	Name	Lithology	Dip (°)	Dip Direction (°)	
402.90	402.90	RUSTLER				
742.90	742.90	SALADO				
2,703.90	2,703.90	CASTILE				
4,137.76	4,136.90	DELAWARE				
4,170.92	4,169.90	BELL CANYON				
5,080.83	5,063.90	CHERRY CANYON				
6,386.37	6,307.90	BRUSHY CANYON				
8,117.08	7,953.90	BONE SPRING				
9,257.66	8,987.90	BONE SPRING 1ST				

OXY
Planning Report

Database:	HOPSPP	Local Co-ordinate Reference:	Well Pure Gold MDP1 29_17 Federal Com 13H
Company:	ENGINEERING DESIGNS	TVD Reference:	RKB=25' @ 3387.90ft
Project:	PRD NM DIRECTIONAL PLANS (NAD 1983)	MD Reference:	RKB=25' @ 3387.90ft
Site:	Pure Gold MDP1 29_17 Federal Com	North Reference:	Grid
Well:	Pure Gold MDP1 29_17 Federal Com 13H	Survey Calculation Method:	Minimum Curvature
Wellbore:	WB00		
Design:	Permitting Plan		

Plan Annotations				
Measured Depth (ft)	Vertical Depth (ft)	Local Coordinates		Comment
		+N/-S (ft)	+E/-W (ft)	
3,585.00	3,585.00	0.00	0.00	Build 1°/100'
5,385.00	5,355.54	-218.61	-175.64	Hold 18° Tangent
8,595.59	8,408.99	-992.03	-797.04	KOP, Build & Turn 10°/100'
9,632.08	9,104.90	-438.86	-942.66	Landing Point
22,481.70	9,154.90	12,410.42	-1,023.22	TD at 22481.70' MD

District I
 1625 N. French Dr., Hobbs, NM 88240
 Phone:(575) 393-6161 Fax:(575) 393-0720

District II
 811 S. First St., Artesia, NM 88210
 Phone:(575) 748-1283 Fax:(575) 748-9720

District III
 1000 Rio Brazos Rd., Aztec, NM 87410
 Phone:(505) 334-6178 Fax:(505) 334-6170

District IV
 1220 S. St Francis Dr., Santa Fe, NM 87505
 Phone:(505) 476-3470 Fax:(505) 476-3462

State of New Mexico
Energy, Minerals and Natural Resources
Oil Conservation Division
1220 S. St Francis Dr.
Santa Fe, NM 87505

CONDITIONS

Action 132963

CONDITIONS

Operator: OXY USA INC P.O. Box 4294 Houston, TX 772104294	OGRID: 16696
	Action Number: 132963
	Action Type: [C-103] NOI Change of Plans (C-103A)

CONDITIONS

Created By	Condition	Condition Date
kpickford	Adhere to previous NMOCD Conditions of Approval	8/12/2022