

District I

1625 N. French Dr., Hobbs, NM 88240
Phone:(575) 393-6161 Fax:(575) 393-0720

District II

811 S. First St., Artesia, NM 88210
Phone:(575) 748-1283 Fax:(575) 748-9720

District III

1000 Rio Brazos Rd., Aztec, NM 87410
Phone:(505) 334-6178 Fax:(505) 334-6170

District IV

1220 S. St Francis Dr., Santa Fe, NM 87505
Phone:(505) 476-3470 Fax:(505) 476-3462

State of New Mexico
Energy, Minerals and Natural Resources
Oil Conservation Division
1220 S. St Francis Dr.
Santa Fe, NM 87505

Form C-101
August 1, 2011

Permit 324459

APPLICATION FOR PERMIT TO DRILL, RE-ENTER, DEEPEN, PLUGBACK, OR ADD A ZONE

1. Operator Name and Address Tascosa Energy Partners, L.L.C 901 W. Missouri Ave Midland, TX 79701		2. OGRID Number 329748
		3. API Number 30-015-49939
4. Property Code 333247	5. Property Name LeMans 24 19 State Com	6. Well No. 304H

7. Surface Location

UL - Lot M	Section 24	Township 20S	Range 26E	Lot Idn	Feet From 1147	N/S Line S	Feet From 297	E/W Line W	County Eddy
---------------	---------------	-----------------	--------------	---------	-------------------	---------------	------------------	---------------	----------------

8. Proposed Bottom Hole Location

UL - Lot I	Section 19	Township 20S	Range 27E	Lot Idn I	Feet From 1980	N/S Line S	Feet From 100	E/W Line E	County Eddy
---------------	---------------	-----------------	--------------	--------------	-------------------	---------------	------------------	---------------	----------------

9. Pool Information

AVALON; BONE SPRING	96381
---------------------	-------

Additional Well Information

11. Work Type New Well	12. Well Type OIL	13. Cable/Rotary	14. Lease Type State	15. Ground Level Elevation 3292
16. Multiple N	17. Proposed Depth 17838	18. Formation Bone Spring	19. Contractor	20. Spud Date 10/1/2022
Depth to Ground water		Distance from nearest fresh water well		Distance to nearest surface water

☒ We will be using a closed-loop system in lieu of lined pits

21. Proposed Casing and Cement Program

Type	Hole Size	Casing Size	Casing Weight/ft	Setting Depth	Sacks of Cement	Estimated TOC
Surf	17.5	13.375	48	500	630	0
Int1	12.25	9.625	36	2500	988	0
Prod	8.5	5.5	20	17838	3338	0

Casing/Cement Program: Additional Comments

--

22. Proposed Blowout Prevention Program

Type	Working Pressure	Test Pressure	Manufacturer
Annular	5000	5000	CTI
Pipe	5000	5000	CTI
Blind	5000	5000	CTI

23. I hereby certify that the information given above is true and complete to the best of my knowledge and belief.
I further certify I have complied with 19.15.14.9 (A) NMAC ☐ and/or 19.15.14.9 (B) NMAC ☒, if applicable.

Signature:

Printed Name: Electronically filed by Kelly M Hardy

Title: Land Manager

Email Address: khardy@tascosaep.com

Date: 9/1/2022

Phone: 432-695-6970

OIL CONSERVATION DIVISION

Approved By: Katherine Pickford

Title: Geoscientist

Approved Date: 9/1/2022

Expiration Date: 9/1/2024

Conditions of Approval Attached

District I
1625 N. French Dr., Hobbs, NM 88240
Phone: (575) 393-6161 Fax: (575) 393-0720

District II
811 S. First St., Artesia, NM 88210
Phone: (505) 748-1283 Fax: (505) 748-9720

District III
1000 Rio Brazos Road, Aztec, NM 87410
Phone: (505) 334-6178 Fax: (505) 334-6170

District IV
1220 S. St. Francis Dr., Santa Fe, NM 87505
Phone: (505) 476-3460 Fax: (505) 476-3462

State of New Mexico
Energy, Minerals & Natural Resources Department
OIL CONSERVATION DIVISION
1220 South St. Francis Dr.
Santa Fe, NM 87505

Form C-102

Revised August 1, 2011

Submit one copy to appropriate
District Office

☐ AMENDED REPORT

WELL LOCATION AND ACREAGE DEDICATION PLAT

API Number 30-015- 49939	Pool Code 96381	Pool Name AVALON; BONE SPRING
Property Code 333247	Property Name LE MANS 2419 STATE COM	Well Number #304H
OGRID No. 329748	Operator Name TASCOSA ENERGY PARTNERS, LLC	Elevation 3292'

Surface Location

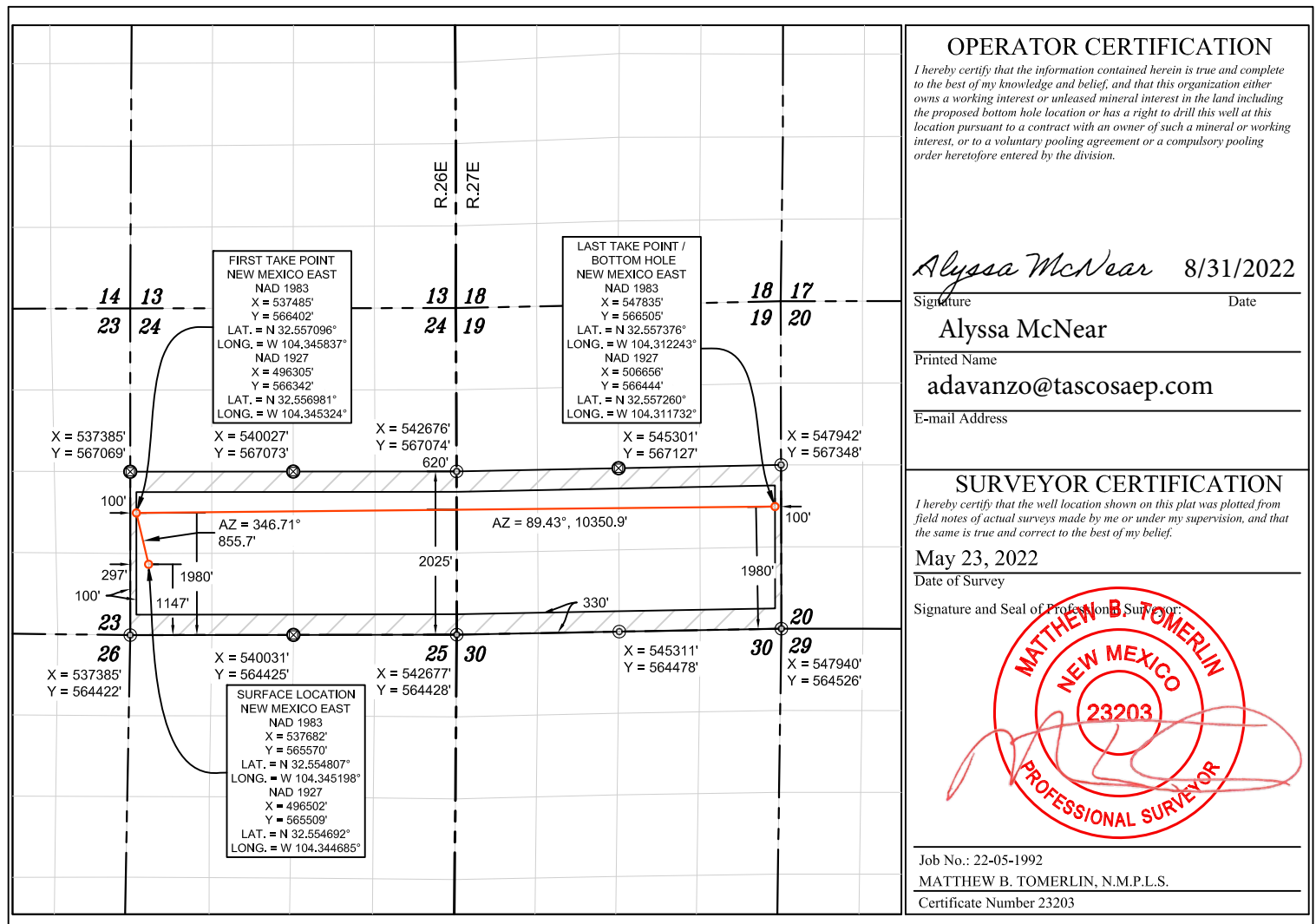
UL or lot no.	Section	Township	Range	Lot Idn	Feet from the	North/South line	Feet from the	East/West line	County
M	24	20 S	26 E		1147	SOUTH	297	WEST	EDDY

Bottom Hole Location If Different From Surface

UL or lot no.	Section	Township	Range	Lot Idn	Feet from the	North/South line	Feet from the	East/West line	County
I	19	20 S	27 E		1980	SOUTH	100	EAST	EDDY

Dedicated Acres	Joint or Infill	Consolidation Code	Order No.
640.15			

No allowable will be assigned to this completion until all interests have been consolidated or a non-standard unit has been approved by the division.



District I
1625 N. French Dr., Hobbs, NM 88240
Phone:(575) 393-6161 Fax:(575) 393-0720

District II
811 S. First St., Artesia, NM 88210
Phone:(575) 748-1283 Fax:(575) 748-9720

District III
1000 Rio Brazos Rd., Aztec, NM 87410
Phone:(505) 334-6178 Fax:(505) 334-6170

District IV
1220 S. St Francis Dr., Santa Fe, NM 87505
Phone:(505) 476-3470 Fax:(505) 476-3462

State of New Mexico
Energy, Minerals and Natural Resources
Oil Conservation Division
1220 S. St Francis Dr.
Santa Fe, NM 87505

Form APD Comments

Permit 324459

PERMIT COMMENTS

Operator Name and Address: Tascosa Energy Partners, L.L.C [329748] 901 W. Missouri Ave Midland, TX 79701		API Number: 30-015-49939
		Well: LeMans 24 19 State Com #304H

Created By	Comment	Comment Date
kpickford	Defining well 30-015-49938 LE MANS 2419 STATE COM #305H	9/1/2022

District I

1625 N. French Dr., Hobbs, NM 88240
 Phone:(575) 393-6161 Fax:(575) 393-0720

District II

811 S. First St., Artesia, NM 88210
 Phone:(575) 748-1283 Fax:(575) 748-9720

District III

1000 Rio Brazos Rd., Aztec, NM 87410
 Phone:(505) 334-6178 Fax:(505) 334-6170

District IV

1220 S. St Francis Dr., Santa Fe, NM 87505
 Phone:(505) 476-3470 Fax:(505) 476-3462

State of New Mexico
Energy, Minerals and Natural Resources
Oil Conservation Division
1220 S. St Francis Dr.
Santa Fe, NM 87505

Form APD Conditions

Permit 324459

PERMIT CONDITIONS OF APPROVAL

Operator Name and Address: Tascosa Energy Partners, L.L.C [329748] 901 W. Missouri Ave Midland, TX 79701	API Number: 30-015-49939
	Well: LeMans 24 19 State Com #304H

OCD Reviewer	Condition
kpickford	Notify OCD 24 hours prior to casing & cement
kpickford	Will require a File As Drilled C-102 and a Directional Survey with the C-104
kpickford	The Operator is to notify NMOCD by sundry (Form C-103) within ten (10) days of the well being spud
kpickford	Once the well is spud, to prevent ground water contamination through whole or partial conduits from the surface, the operator shall drill without interruption through the fresh water zone or zones and shall immediately set in cement the water protection string
kpickford	Cement is required to circulate on both surface and intermediate1 strings of casing
kpickford	Oil base muds are not to be used until fresh water zones are cased and cemented providing isolation from the oil or diesel. This includes synthetic oils. Oil based mud, drilling fluids and solids must be contained in a steel closed loop system

LeMans 2419 State Com # 304H “Cement Program”

SL= 1147 FSL & 297 FWL, Section 24, T20S, R26E, Eddy County, New Mexico.

BHL = 1980 FSL & 100 FEL, Sec 19, T20S, R27E, Eddy County, New Mexico

API # 30 015-

X Sand Lwr Bone Springs Horizontal Test_TVD \pm 7,594-7,824 ft

.80° F Temp Gradient per 100 ft + 75° F surface

1. **Surface hole depth = 500 ft. (79°F) TOC @surface w/ 200% W/O**

Surface hole = 17.5 inch

Surface casing = 13.375" 48# H-40 STC

Float Collar "PDC Drillable" 1 jts up.

Hardware needed = 8 spring centralizers-(6) first 6 jts_(1) every 3rd jt to surface

1 Guide shoe PDC Drillable

1 Float Collar (1 jt Up) PDC Drillable

2 thread lock

(2) collar stops (15' up from shoe) + (15' up from FC)

Engineering Data "Surface":

500 ft 17.5 inch hole x 13.375" csg = .6946 cu ft/ft X 500 X 3.0 excess = 1042 cu ft

44 ft 13.375" 54.5 # casing volume= .8679 X 44 ft = 38 cu ft

Total Cement volume required = 1,090 cu ft.

Lead slurry "Scavenger" Anticipated Coverage (250-surf) = 531 cu ft "C" 65:35poz
w/ 2% CaCl₂, 12.0 ppg yield 2.07 cu ft/sk = **(sks)**

Slurry 1 Cement Tested @ 80°F

Thickening Time 4hr 37 min

Compressive Strength = 8:53_ 500 psi; 24:00_815 psi

.07% FW in 2 hrs

FL = NC

Gel Strength = 10 sec 10.3; 10 min 26.2

PV = 16.2

YP = 18.3

Tail Slurry Anticipated Coverage (500'-250) = 559 cu ft Class "C" w/ 2% CaCl₂ 14.8
ppg yield 1.35 cu ft / sk = **(sks)**

Slurry 2 Cement Tested @ 79°F

Thickening Time 2hr 08 min

Compressive Strength = 5:53_ 500 psi; 36:00_1818 psi

0% FW in 2 hrs

FL = 100 ml/30 min

Gel Strength = 10 sec 15.3; 10 min 19.9

PV = 24

YP = 17.8

Include 350 sks class "C" neat for top out + sack Calcium Chloride for mixing water (3%) if needed.

2. Intermediate hole depth=2,500 ft. (99° F) TOC @ Surface w/ 150% W/O open hole

Intermediate hole = 12.25 inch

Intermediate Casing = 9.625" 36# J-55 LTC

Float Collar 1 jts up.

Hardware needed = 12 spring cent space equally to Surface

1 Guide Shoe

1 float collar (1 jt up)

4 thread lock

Casing Packer

Engineering Data "Intermediate":

2050 ft 12.25 inch open hole x 9.625 csg = .3132 cu ft/ft X 2050 X 2.5 excess = **1,605 cu ft**

450 ft 9.625 x 13.375" casing = .3765 cu ft/ft X 450 = **169 cu ft**

44 ft 9.625" 32 # casing volume = .43 X 44 ft = **22 cu ft**

Total Cement volume required = 1,796 cu ft.

Lead Slurry Anticipated Coverage (2000-Surface) = 1382 cu ft "C" 65/35 poz w/ 2pps

Sodium Metasilicate 12.0 ppg yield 2.03 cu ft/sk = **(681 sks)**

Lead Slurry Tested @ 99°F

Thickening Time 5hr 59 min

Compressive Strength = 24:00 hrs _ 349 psi

.2% in 2 hrs (2.5 ml/250 ml)

Gel Strength = 10 Sec 17.6; 10 min 25.1

PV = 13.3

YP = 16.1

Tail Slurry Anticipated Coverage (2500-2000) = 414 cu ft Class "C" w/ 2% CaCl₂ 14.8 ppg yield 1.35 cu ft / sk = **(307 sks)**

Slurry 2 Cement Tested @ 100°F

Thickening Time 1hr 56 min

Compressive Strength = 3:31_ 500 psi; 36:0_ 2229 psi

.8% FW in 2 hrs

FL = 100 ml/30 min

Gel Strength = 10 sec 16.6; 10 min 16.7

PV = .7

YP = 17.5

Include 350 sks class "C" neat for top out + sack Calcium Chloride for mixing water (3%) if needed.

- 3. Production Hole Depth = ± 17,838 ft. "± 7,824' TVD Max. (Temp 137.7° F)_TOC @ surface w/ 50% (W/O) OPEN HOLE (1 stage cmt job). NEED 18 HR SERVICE TIME TO PUMP JOB !**

Prod Hole Part 1 = 8.5 inch = 8,087-17,838 ft (9,751') x .2290 x 1.5 = **(3,349 CuFt)**Prod Hole Part 2 = 8.75 inch = 2,500-8,087 ft. (5,587') x .2526 x 1.5 = **(2,117 Cuft)**Prod Hole Part 3 = 9.625 36# Csg x 5.5" Csg (2500') **(673 Cu ft)**

Shoe Joint = 6 Cuft

Total Cmt needed = 6,139 cuft 3338 sacks

KOP ± 7,099' MD. EOC ± 7,987' (88.66°)

5.5" seat = 17,838 MD. TOC calculated to Surface w/ 50% Washout open hole.

Production Casing = 5.5 inch 20 # RY 110 w/ GBDC or Equivalent Connections

Hardware Needed = 60 spring Centralizers every 3rd jt. 7500 to surface
43 Rigid standoff Centralizers (1 every 3rd jt in lateral & Curve.

Wet Float Shoe

8 thread lock

Engineering Data "Production Casing Cement":

Spacer 40 Bbls LCM

Slurry 1 Coverage = (5,000-Surface)8.75" OH x 5.5" Csg = 2,500' x .2526 cu ft / ft x 1.5 = **947 cu ft.**5.5" Csg x 9-5/8 36# csg = 2,500' x .2691 cu ft / ft = **673 cu ft.****Slurry 1 Total = 1,620 cu ft.**

Total Slurry 1 Recipe = (1,620 cu ft) (365 sacks) class "C" 50/50 poz 10.5 ppg yield
4.44 cu ft/sk w/ 10% bentonite + 10% Silica Fume + 1.5% Sodium Metasilicate + 5
pps LCM, .4% Anti Foam, .55% Iron Seq, 5% BWOW Salt.

Slurry 1 Cement Tested @ 141°F

Thickening Time 6hr 02 min

Compressive Strength = 10:41_ 50 psi; 15:29_ 100 psi; 72 hr_346 psi

1% in 2 hrs (2.5 ml/250 ml)

Gel Strength = 10 Sec 22; 10 min 32

PV = 5.8

YP = 19

Slurry 2 Coverage = (17,838 - 5,000 ft)

17,838 -8,087 (9,751 ft) 8.5" OH x 5.5" Csg .2290 cu ft / ft x 1.5 = **3,349 cu ft**

8,087- 5,000 (3,087 ft) 8.75" OH x 5.5" Csg .2526 cu ft/ft x 1.5 = **1,170 cu ft**

Shoe jt = **Wet Shoe**

Slurry 2 Total = 4,519 cu ft

Total Slurry 2 Recipe = (4,519 cu ft) (2,973 sacks) class "H" 50/50 poz 13.2 ppg yield
1.52 cu ft/sk w/ 5% bentonite + .2% Sodium Metasilicate + 3 BWOW NaCl + .4%
Fluid Loss Gas Migration Additive, .35% Retarder, .2% Anti Foam. 7.27 GPS H2O.

Slurry 2 Cement Tested @ 140°F

Thickening Time 5hr 37 min

Compressive Strength = 9:34_ 50 psi; 20:08_ 500 psi; 72 hr_1,622 psi

0% FW in 2 hrs

FL = 100 ml/30 min

Gel Strength = 10 sec 4; 10 min 8

PV = 120.9

YP = 13.2

API #			
Operator Name:	Property Name:	Well Number	

Kick Off Point (KOP)

UL	Section	Township	Range	Lot	Feet	From N/S	Feet	From E/W	County
Latitude					Longitude				NAD

First Take Point (FTP)

UL	Section	Township	Range	Lot	Feet	From N/S	Feet	From E/W	County
Latitude					Longitude				NAD

Last Take Point (LTP)

UL	Section	Township	Range	Lot	Feet	From N/S	Feet	From E/W	County
Latitude					Longitude				NAD

Is this well the defining well for the Horizontal Spacing Unit?

Is this well an infill well? ☐

If infill is yes please provide API if available, Operator Name and well number for Defining well for Horizontal Spacing Unit.

API #			
Operator Name:	Property Name:	Well Number	

Estimated Formation Tops

[illegible]

**Tascosa Energy Partners, LLC
LeMans 24-19 State Com
Hydrogen Sulfide Contingency Plan
For Drilling/Completion/Workover/Facility
SEC 24 & 19, T20S, R27/26E, Eddy County, New Mexico**

LeMans 24-19 State Com wells and their anticipated facility are not expected to have Hydrogen Sulfide releases. However, there may be Hydrogen Sulfide production in the nearby area. There are no occupied dwellings within a mile of the area but a contingency plan has been orchestrated. Tascosa Energy Partners, LLC will have a Company Representative living on location throughout the drilling and completion of this well. If Hydrogen Sulfide is detected or suspected, monitoring equipment will be available for monitoring and/or testing. An un-manned H₂S safety trailer and monitoring equipment will also be station on location during the drilling operation below the Surface Casing depth of ± 500 ft. to total drilling depth of ± 13,000 ft.

**Tascosa Energy Partners, LLC
LeMans 24-19 State Com
Hydrogen Sulfide Contingency Plan
For Drilling/Completion/Workover/Facility
SEC 24 & 19, T20S, R27/26E, Eddy County, New Mexico**

EMERGENCY CALL LIST: (Start and continue until ONE of these people have been contacted)

	OFFICE	MOBILE	HOME
Tascosa Energy ,LLC.	432 695-6970		
Alyssa McNear		720 244 4417	
Jeff Birkelbach	432 695-6970	432 553 0391	
Brian Kirkland		432 770-2325	
Kevin Herrmann	432 695-6970	432 254-9106	

EMERGENCY RESPONSE NUMBERS:

State Police:	Eddy County		575 748 9718
State Police:	Lea County		575 392 5588
Sheriff	Eddy County		575 746 2701
Sheriff	Lea County		
Emergency Medical Ser	Eddy County		911 or 575 746 2701
(Ambulance)	Lea County	Eunice	911 or 575 394 3258
Emergency Response	Eddy County SERC		575 476 9620
Artesia Police Dept			575 746 5001
Artesia Fire Dept			575 746 5001
Carlsbad Police Dept			575 885 2111
Carlsbad Fire Dept			575 885 3125
Loco Hills Police Dept			575 677 2349
Jal Police Dept			575 395 2501
Jal Fire Dept			575 395 2221
Jal ambulance			575 395 2221
Eunice Police Dept			575 394 0112
Eunice Fire Dept			575 394 3258

**Tascosa Energy Partners, LLC
LeMans 24-19 State Com
Hydrogen Sulfide Contingency Plan
For Drilling/Completion/Workover/Facility
SEC 24 & 19, T20S, R27/26E, Eddy County, New Mexico**

Eunice Ambulance		575 394 3258
Hobbs Police Dept		
NMOCD	District 1 (Lea, Roosevelt, Curry)	575 393 6161
	District 2 (Eddy Chavez)	575 748 1283
BLM Carlsbad		575 234 5972
BLM Hobbs		575 393 3612
Lea County Information		575 393 8203
Midland Safety	Lea/Eddy County	432 520 3838 888 262 4964
American Safety	Lea/Eddy County	575 746 1096 575 393 3093
Halliburton	Artesia	800 844 8451
	Hobbs	800 844 8451
	Midland	800 844 8451
Wild Well Control	Midland	281 784 4700 281 443 4873

**Tascosa Energy Partners, LLC
LeMans 24-19 State Com
Hydrogen Sulfide Contingency Plan
For Drilling/Completion/Workover/Facility
SEC 24 & 19, T20S, R27/26E, Eddy County, New Mexico**

TABLE OF CONTENTS

HYDROGEN SULFIDE TRAINING

H2S SAFETY EQUIPMENT AND SYSTEMS

GENERAL EMERGENCY PLAN page 7

EMERGENCY PROCEDURE FOR UNCONTROLLED RELEASES OF H2S page 7

CALCULATIONS OF THE GENERAL RADIUS OF EXPOSURE (ROE) page 8

PUBLIC EVACUATION PLAN page 8

PROCEDURE FOR IGNITING AN UNCONTROLLABLE CONDITION:

PROCEDURE FOR IGNITION page 9

REQUIRED EMERGENCY EQUIPMENT page 8

USING SELF CONTAINED BREATHING AIR EQUIPMENT (SCBA) page 9

**RESCUE & FIRST AID FOR VICTIMS OF HYDROGEN SULFIDE
(H2S) POISONING** page 10

H2S TOXIC EFFECTS page 11

H2S PHYSICAL EFFECTS page 11

LOCATION MAP page 12-13

**Tascosa Energy Partners, LLC
LeMans 24-19 State Com
Hydrogen Sulfide Contingency Plan
For Drilling/Completion/Workover/Facility
SEC 24 & 19, T20S, R27/26E, Eddy County, New Mexico**

1. Hydrogen Sulfide Training

All personnel, whether regularly assigned, contracted, or employed on an unscheduled basis, will receive training from a qualified instructor in the following areas prior to commencing drilling operations on this well

- 1. The hazards and characteristics of hydrogen sulfide (H₂S)**
- 2. The proper use and maintenance of personal protective equipment and life support systems.**
- 3. The proper use of H₂S detectors, alarms, warning systems, briefing areas, evacuation procedures and prevailing winds.**
- 4. The proper techniques for first aid and rescue procedures**

In addition, supervisory personnel will be trained in the following areas:

- 1. The effects of H₂S on metal components. If high tensile tubulars are to be used, personnel will be trained in the special maintenance requirements.**
- 2. Corrective action and shut-in procedures when drilling or reworking a well and blowout prevention and well control procedures.**
- 3. The contents and requirements of H₂S Drilling Operations Plan and the Public Protection plan.**

There will be an initial training session just prior to encountering a known or probable H₂S zone (within 3 days or 500 feet) and weekly H₂S and well control drills for all personnel in each crew. The initial training session shall include a review of the site specific H₂S Drilling Operations Plan and the Public Protection Plan. This plan shall be available at the well site. All personnel will be required to carry documentation that they have received the proper training.

2. H₂S Safety Equipment and Systems

Note: All H₂S safety equipment and systems will be installed, tested and operational when drilling reaches a depth of 500 feet above, or three days prior to penetrating the first zone containing or reasonably expected to contain H₂S. If H₂S greater than 100 ppm is encountered in the gas stream we will shut-in and install H₂S equipment.

- 1. Well Control Equipment:**
 - a. Flare Line**
 - b. Choke manifold with remotely operated choke**
 - c. Blind rams and pipe rams to accommodate all pipe sizes with properly sized closing unit.**

Tascosa Energy Partners, LLC
LeMans 24-19 State Com
Hydrogen Sulfide Contingency Plan
For Drilling/Completion/Workover/Facility
SEC 24 & 19, T20S, R27/26E, Eddy County, New Mexico

- d. Auxiliary equipment to include; annular preventer, mud gas separator, rotating head.
2. Protective equipment for essential personnel:
 - a. Mark II Survive air 30 minute units located in the dog house and at the briefing areas.
3. H2S detection and monitoring equipment:
 - a. 2-portable H2S monitor positioned on location for best coverage and response. These units have warning lights and audible sirens when H2S levels of 20 ppm are reached.
4. Visual warning systems:
 - a. Caution/Danger signs shall be posted on roads providing direct access to the location. Signs will be painted a high visibility yellow with black lettering of sufficient size to be readable at a reasonable distance from the immediate location. Bilingual signs will be used, when appropriate.
5. Mud Program:
 - a. The mud program has been designed to minimize the volume of H2S circulated to the surface.
6. Metallurgy:
 - a. All drill strings, casing, tubing, wellhead, blowout preventers, drilling spool, kill lines, choke manifold and lines, and valves shall be suitable for H2S service.
7. Communications:
 - a. Company vehicles equipped with cellular telephone.

Tascosa Energy Partners, LLC has conducted a review to determine if an H2S contingency plan is required for the subject well. We were able to conclude that any potential hazardous volume would be minimal. H2S concentrations of wells in this area from surface to TD are low enough; therefore, **we do not believe that an H2S contingency plan is necessary**

General H2S Emergency Actions:

1. All personnel will immediately evacuate to an up-wind and if possible up-hill "safe area"
2. If for any reason a person must enter the hazardous area, they must wear a SCBA (Self Contained Breathing Apparatus)
3. Always use the "buddy system"
4. Isolate the well/problem if possible
5. Account for all personnel
6. Display the proper colors warning all unsuspecting personnel of the danger at hand.
7. Contact the Company personnel as soon as possible if not at the location. (use the enclosed call list as instructed

**Tascosa Energy Partners, LLC
LeMans 24-19 State Com
Hydrogen Sulfide Contingency Plan
For Drilling/Completion/Workover/Facility
SEC 24 & 19, T20S, R27/26E, Eddy County, New Mexico**

At this point the company representative will evaluate the situation and coordinate the necessary duties to bring the situation under control, and if necessary, the notification of the emergency response agencies and nearby residents.

EMERGENCY PROCEDURES FOR AN UNCONTROLLABLE RELEASE OF H₂S

1. All personnel will wear the self-contained breathing apparatus.
2. Remove all personnel to the "safe area". (always use the buddy system).
3. Contact company personnel if not on location.
4. Set in motion the steps to protect and or remove the general public to an upwind "safe area". Maintain strict security & safety procedures while dealing with the source.
5. No entry to any unauthorized personnel.
6. Notify the appropriate agencies: City Police-City Street (s)
State Police- State Rd
County Sheriff – County Rd.
7. Call the BLM &/or NMOCD

PROTECTION OF THE GENERAL PUBLIC (Radius of Exposure):

- 100 ppm at any public area (any place not associated with this site)
- 500 ppm at any public road (any road which the general public may travel)
- 100 ppm radius of ¼ mile in New Mexico will be assumed if there is insufficient data to do the calculations, and there is a reasonable expectation that H₂S could be present in concentrations greater than 100 ppm in the gas mixture

CALCULATIONS FOR THE 100 PPM (ROE) "Pasquill-Gifford equation"

X = [(1.589) (mole fraction) (Q- volume in std cu ft)] to the power of (0.6258)

CALCULATION FOR THE 500 PPM ROE:

**Tascosa Energy Partners, LLC
LeMans 24-19 State Com
Hydrogen Sulfide Contingency Plan
For Drilling/Completion/Workover/Facility
SEC 24 & 19, T20S, R27/26E, Eddy County, New Mexico**

X = [(0.4546) (mole fraction) (Q- volume in std cu ft)] to the power of (0.6258)

Example:

If a well/facility has been determined to have 150 / 500 ppm H₂S in the gas mixture and the well/facility is producing at a gas rate of 100 MCFPD then:

150 ppm X= [(1.589) (.00015) (100,000 cfd)] to the power of (.6258)
X= 7 ft

500 ppm X= [(0.4546) (.0005) (100,000 cfd)] to the power of (.6258)
X = 3.3 ft.

(These calculations will be forwarded to the appropriate District NMOCD office when Applicable)

PUBLIC EVACUATION PLAN:

- 1. Notification of the emergency response agencies of the hazardous condition and implement evacuation procedures.
- A trained person in H₂S safety, shall monitor with detection equipment the H₂S concentration, wind and area exposure (ROE). This person will determine the outer perimeter of the hazardous area. The extent of the evacuation area will be determined from the data being collected. Monitoring shall continue until the situation has been resolved. **(All monitoring equipment shall be UL approved, for use in class 1 groups A,B,C & D, Division 1, hazardous locations. All monitor will have a minimum capability of measuring H₂S, oxygen, and flammable values).**
- Law enforcement shall be notified to set up necessary barriers and maintain such for the duration of the situation as well as aid in the evacuation procedure.
- The company supervising personnel shall stay in communication with all agencies throughout the duration of the situation and inform such agencies when the situation has been contained and the affected area(s) is safe to enter.

PROCEDURE FOR IGNITING AN UNCONTROLABLE CONDITION:

- 1. Human life and/or property are in danger
- 2. There is no hope of bringing the situation under control with the prevailing conditions at the site.

INSTRUCTION FOR IGNITION:

- 1. Two people are required. They must be equipped with positive pressure, "self - contained breathing apparatus" and a "D" ring style full body, OSHA approved safety harness. Nonflammable rope will be attached.

Tascosa Energy Partners, LLC
LeMans 24-19 State Com
Hydrogen Sulfide Contingency Plan
For Drilling/Completion/Workover/Facility
 SEC 24 & 19, T20S, R27/26E, Eddy County, New Mexico

- 2. One of the people will be qualified safety person who will test the atmosphere for H₂S, Oxygen & LFL. The other person will be the company supervisor; he is responsible for igniting the well.
- 3. Ignite up wind from a distance no closer than necessary. Make sure that where you ignite from has the maximum escape avenue available. A 25 mm flare gun shall be used, with a ± 500 ft. range to ignite the gas.
- 4. Prior to ignition, make a final check for combustible gases.
- 5. Following ignition, continue with the emergency actions & procedures as before.

A. All personnel shall receive proper H₂S training in accordance with Onshore Order III.C.3.a.

B. Briefing Area: two perpendicular areas will be designated by signs and readily accessible.

C. Required Emergency Equipment:

- Well control equipment
 - a. Flare line 100' from wellhead to be ignited by flare gun or automatic striker.
 - b. Choke manifold with a remotely operated choke.
 - c. Mud/gas separator
- Protective equipment for essential personnel.

Breathing apparatus:

- a. Rescue Packs (SCBA) — 1 unit shall be placed at each breathing area, 2 shall be stored in the safety trailer.
- b. Work/Escape packs — 4 packs shall be stored on the rig floor th sufficient air hose not to restrict work activity.
- c. Emergency Escape Packs — 4 packs shall be stored in the doghouse for emergency evacuation.

Auxiliary Rescue Equipment:

- a. Stretcher
- b. Two OSHA full body harness
- c. 100 ft 5/8inch OSHA approved rope
- d. 1-20# class ABC fire extinguisher

- H₂S detection and monitoring equipment:

Tascosa Energy Partners, LLC
LeMans 24-19 State Com
Hydrogen Sulfide Contingency Plan
For Drilling/Completion/Workover/Facility
SEC 24 & 19, T20S, R27/26E, Eddy County, New Mexico

The stationary detector with three sensors will be placed in the upper dog house if equipped, set to visually alarm @ 10 ppm and audible @ 14 ppm. Calibrate a minimum of every 30 days or as needed. The sensors will be placed in the following places: Rig floor / Bell nipple / End of flow line or where well bore fluid is being discharged.
(Gas sample tubes will be stored in the safety trailer)

- Visual warning systems.
 - a. One color code condition sign will be placed at the entrance to the site reflecting the possible conditions at the site.
 - b. A colored condition flag will be on display, reflecting the current condition at the site at the time.
 - c. Two wind socks will be placed in strategic locations, visible from all angles.
- Mud program: **Only utilized if H2S has been detected**
The mud program has been designed to minimize the volume of H2S circulated to surface. The operator will have the necessary mud products to minimize hazards while drilling in H2S bearing zones.
- Metallurgy: **Only utilized if H2S has been detected**
 - a. All drill strings, casings, tubing, wellhead, blowout preventer, drilling spool, kill lines, choke manifold and lines, and valves shall be suitable for H2S service.
 - b. All elastomers used for packing and seals shall be H2S trim.
- Communication: **Only utilized if H2S has been detected**
Communication will be via two way radio in emergency and company vehicles. Cell phones and land lines where available.

USING SELF CONTAINED BREATHING AIR EQUIPMENT (SCBA):

- (SCBA) SHOULD BE WORN WHEN ANY OF THE FOLLOWING ARE PERFORMED: **Only utilized if H2S has been detected**
 - Working near the top or on top of a tank
 - Disconnecting any line where H2S can reasonably be expected
 - Sampling air in the area to determine if toxic concentrations of H2S exist.
 - Working in areas where over 10 ppm on H2S has been detected.
 - At any time there is a doubt as the level of H2S in the area.
- All personnel shall be trained in the use of SCBA prior to working in a potentially hazardous location.
- Facial hair and standard eyeglasses are not allowed with SCBA.
- Contact lenses are never allowed with SCBA.

**Tascosa Energy Partners, LLC
LeMans 24-19 State Com
Hydrogen Sulfide Contingency Plan
For Drilling/Completion/Workover/Facility
SEC 24 & 19, T20S, R27/26E, Eddy County, New Mexico**

- Air quality shall be continuously be checked during the entire operation.
- After each use, the SCBA unit shall be cleaned, disinfected, serviced and inspected
- All SCBA shall be inspected monthly.

RESCUE AND FIRST AID FOR VICTIMS OF HYDROGEN SULFIDE (H₂S) POISONING:

- Do not panic
- Remain Calm & think
- Get on the breathing apparatus
- Remove the victim to the safe breathing area as quickly as possible. Up wind an uphill from source or cross wind to achieve upwind.
- Notify emergency response personnel.
- Provide artificial respiration and or CPR, as necessary
- Remove all contaminated clothing to avoid further exposure.
- A minimum of two personnel on location shall be trained in CPR and First Aid.

Tascosa Energy Partners, LLC
LeMans 24-19 State Com
Hydrogen Sulfide Contingency Plan
For Drilling/Completion/Workover/Facility
 SEC 24 & 19, T20S, R27/26E, Eddy County, New Mexico

Hydrogen Sulfide (H₂S) Toxic Effects

H₂S is extremely toxic. The acceptable ceiling for eight hours of exposure is 10 ppm, which is .001% by volume. H₂S is approximately 20% heavier than air (Sp. Gr= 1.19)(Air = 1) and H₂S is colorless. It forms an explosive mixture with air between 4.3% and 46%. By volume hydrogen sulfide is almost as toxic as hydrogen cyanide and 5-6 times more toxic than carbon monoxide.

Various Gases

COMMON NAME	CHEMICAL ABBREV.	SPECIFIC GRVTY.	THRESHOLD LIMITS	HAZARDOUS LIMITS	LETHAL CONCENTRATIONS
Hydrogen Sulfide	H ₂ S	1.19	10ppm 15 ppm	100 ppm/hr	600 ppm
Hydrogen Cyanide	HCN	0.94	10 ppm	150 ppm/hr	300 ppm
Sulfur Dioxide	SO ₂	2.21	2 ppm	N/A	1000 ppm
Chlorine	CL ₂	2.45	1 ppm	4 ppm/hr	1000 ppm
Carbon Monoxide	CO	0.97	50 ppm	400 ppm/hr	1000 ppm
Carbon Dioxide	CO ₂	1.52	5000 ppm	5%	10%
Methane	CH ₄	0.55	90,000	Combustible@ 5%	N/A

Threshold Limit: Concentrations at which it is believed that all workers may be repeatedly exposed, day after day without adverse effects.

Hazardous Limit: Concentrations that may cause death.

Lethal Concentrations: Concentrations that will cause death with short term exposure.

Threshold Limit- 10 ppm: NIOSH guide to chemical hazards.

PHYSICAL EFFECTS OF HYDROGEN SULFIDE:

CONCENTRATION	PHYSICAL EFFECTS
.001% 10 PPM	Obvious and unpleasant odor. Safe for 8 hour exposure
.005% 50 ppm	Can cause some flu like symptoms and can cause pneumonia
.01% 100 ppm	Kills the sense of smell in 3-15 minutes. May irritate the eyes and throat.
.02% 200 ppm	Kills the sense of smell rapidly. Severly irritates the eyes and throat. Severe flu like symptoms after 4 or more hours. May cause lung damage and or death.
.06% 600 ppm	Loss of consciousness quickly, death will result if not rescued promptly.

LeMans 2419 State Com # 1H

MITCHELL ENGINEERING PROGRAMS

LONG's METHOD OF SURVEY COMPUTATION**OBLIQUE CIRCULAR ARC INTERPOLATION**

	MD OF INTERPOLATION DEPTH,(feet)
#N/A	TVD COORDINATE OF THE DEPTH (feet)
#N/A	N/S COORDINATE OF DEPTH (feet)
#N/A	E/W COORDINATE OF DEPTH (feet)

DISTANCE TABLE

STATION A	STATION B
0.00	ft

3 D DISTANCE BETWEEN STATION A AND STATION B

TABLE OF SURVEY STATIONS

Calculator =

STA #	ΔMD ft	INCL deg	AZIM deg	MD ft	TVD ft	N+/S- ft	E+/W- ft	DLS deg/100FT
1	TIE POINT =>	0	0	1000.00	1000.00	0.00	0.00	-
2	100	3	343.48	1100.00	1099.95	2.51	-0.74	3.00
3	100	6	343.48	1200.00	1199.63	10.03	-2.97	3.00
4	100	9	343.48	1300.00	1298.77	22.54	-6.69	3.00
5	100	10.51	343.48	1400.00	1397.32	38.79	-11.50	1.51
6	100	10.51	343.48	1500.00	1495.64	56.27	-16.69	0.00
7	100	10.51	343.48	1600.00	1593.96	73.76	-21.88	0.00
8	4021	10.51	343.48	5621.00	5547.50	776.94	-230.44	0.00
9	100	10.51	343.48	5721.00	5645.83	794.43	-235.62	0.00
10	100	9	343.48	5821.00	5744.38	810.68	-240.44	1.51
11	100	6	343.48	5921.00	5843.51	823.19	-244.15	3.00
12	100	3	343.48	6021.00	5943.19	830.71	-246.38	3.00
13	100	0	343.48	6121.00	6043.15	833.22	-247.13	3.00
14	100	0	0	6221.00	6143.15	833.22	-247.13	0.00
15	100	0	0	6321.00	6243.15	833.22	-247.13	0.00
16	578	0	0	6899.00	6821.15	833.22	-247.13	0.00
17	100	0	0	6999.00	6921.15	833.22	-247.13	0.00
18	100	0	0	7099.00	7021.15	833.22	-247.13	0.00
19	100	10	90	7199.00	7120.64	833.22	-238.42	10.00
20	100	20	90	7299.00	7217.11	833.22	-212.57	10.00
21	100	30	90	7399.00	7307.62	833.22	-170.37	10.00
22	100	40	90	7499.00	7389.44	833.22	-113.08	10.00
23	100	50	90	7599.00	7460.06	833.22	-42.46	10.00
24	100	60	90	7699.00	7517.34	833.22	39.35	10.00
25	100	70	90	7799.00	7559.55	833.22	129.87	10.00
26	100	80	90	7899.00	7585.40	833.22	226.34	10.00
27	88	88.66	90	7987.00	7594.08	833.22	313.82	9.84
28	100	88.66	90	8087.00	7596.42	833.22	413.80	0.00
29	9700	88.66	90	17787.00	7823.26	833.22	10111.14	0.00
30	51	88.66	90	17838.00	7824.45	833.22	10162.13	0.00



LeMans 24-19 State DSU – Natural Gas Management Plan

VI. Separation Equipment:

Tascosa has sized a FWKO and a high pressure, 3-phase separator to allow for complete separation at our anticipated rates, with adequate retention times. Tank vapors will also be captured through a vapor recovery unit and sent to the Enterprise sales line through a compressor at the gathering station.

VII. Operational Practices:

- a. Drilling Operations – Tascosa will ensure that a flare stack is set at least 100' from the wellbore during drilling operations. This flare stack will be properly sized to handle the maximum expected release, ensuring that all natural gas produced during drilling operations can be flared (unless there is an equipment malfunction or if venting is necessary for safety reasons).
- b. Completion Operations – Prior to flowback, Tascosa will ensure that the well is connected to a gathering system that can handle the expected gas volumes. During flowback, natural gas will be separated and flared until it is within the specs of the contracted gathering system (Enterprise).
- c. Production Operations – Tascosa will conduct weekly AVO inspections and tackle equipment failures with haste. The emergency flare on location will be equipped with an auto-ignition, capable of handling the maximum expected release. Sight glasses will be installed on all tanks to eliminate gas releases due to gauging through thief hatches. A VRU will also be installed to capture tank vapors and reduce waste. In preparation of a VRU failure or planned maintenance, a backup combustor will be placed at the facility.
- d. Performance Standards –
 - a. Tascosa will design completion and production equipment for maximum expected output and pressure to eliminate venting.
 - b. A properly sized flare stack will be placed at the facility with an automatic ignitor.
 - c. AVO inspections will be conducted at least once a week to prevent releases due to equipment failure. These inspections will be recorded for future review.
 - d. Tascosa is obligated to eliminate waste and will repair equipment failures as soon as possible.
- e. Measurement and Estimation – A meter will be placed on the combustor and the flare stack to ensure combusted gas readings are accurate during a release event. If for any reason a meter reading is unavailable, released volumes will be estimated and reported.



VIII. Best Management Practices:

Tascosa will aim to conduct surface maintenance without venting or flaring as much as possible. If planned maintenance is prolonged due to wait times for labor and equipment, Tascosa will shut in the producing well to prevent excess emissions. Tascosa will also minimized venting during downhole operations.

State of New Mexico
Energy, Minerals and Natural Resources Department
Oil Conservation Division
1220 South St. Francis Dr.
Santa Fe, NM 87505

Submit Electronically
Via E-permitting

NATURAL GAS MANAGEMENT PLAN

This Natural Gas Management Plan must be submitted with each Application for Permit to Drill (APD) for a new or recompleted well.

Section 1 – Plan Description

Effective May 25, 2021

I. Operator: Tascosa Energy Partners, LLC. **OGRID:** 329748 **Date:** 08/01/2022

II. Type: ☒ Original ☐ Amendment due to ☐ 19.15.27.9.D(6)(a) NMAC ☐ 19.15.27.9.D(6)(b) NMAC ☐ Other.

If Other, please describe: _____

III. Well(s): Provide the following information for each new or recompleted well or set of wells proposed to be drilled or proposed to be recompleted from a single well pad or connected to a central delivery point.

Well Name	API	ULSTR	Footages	Anticipated Oil BBL/D	Anticipated Gas MCF/D	Anticipated Produced Water BBL/D
LeMans 24 19 St Com #304H		M-24-20S-26E	1147 FSL, 297 FWL	1200	4800	1650

IV. Central Delivery Point Name: Catalina 30 [See 19.15.27.9(D)(1) NMAC]

V. Anticipated Schedule: Provide the following information for each new or recompleted well or set of wells proposed to be drilled or proposed to be recompleted from a single well pad or connected to a central delivery point.

Well Name	API	Spud Date	TD Reached Date	Completion Commencement Date	Initial Flow Back Date	First Production Date
LeMans 24 19 St Com #304H		10/01/2022	10/25/22	03/01/2023	04/01/2023	04/05/2023

VI. Separation Equipment: ☒ Attach a complete description of how Operator will size separation equipment to optimize gas capture.

VII. Operational Practices: ☒ Attach a complete description of the actions Operator will take to comply with the requirements of Subsection A through F of 19.15.27.8 NMAC.

VIII. Best Management Practices: ☒ Attach a complete description of Operator's best management practices to minimize venting during active and planned maintenance.

Section 2 – Enhanced Plan

EFFECTIVE APRIL 1, 2022

Beginning April 1, 2022, an operator that is not in compliance with its statewide natural gas capture requirement for the applicable reporting area must complete this section.

☒ Operator certifies that it is not required to complete this section because Operator is in compliance with its statewide natural gas capture requirement for the applicable reporting area.

IX. Anticipated Natural Gas Production:

Well	API	Anticipated Average Natural Gas Rate MCF/D	Anticipated Volume of Natural Gas for the First Year MCF

X. Natural Gas Gathering System (NGGS):

Operator	System	ULSTR of Tie-in	Anticipated Gathering Start Date	Available Maximum Daily Capacity of System Segment Tie-in

XI. Map. ☐ Attach an accurate and legible map depicting the location of the well(s), the anticipated pipeline route(s) connecting the production operations to the existing or planned interconnect of the natural gas gathering system(s), and the maximum daily capacity of the segment or portion of the natural gas gathering system(s) to which the well(s) will be connected.

XII. Line Capacity. The natural gas gathering system ☐ will ☐ will not have capacity to gather 100% of the anticipated natural gas production volume from the well prior to the date of first production.

XIII. Line Pressure. Operator ☐ does ☐ does not anticipate that its existing well(s) connected to the same segment, or portion, of the natural gas gathering system(s) described above will continue to meet anticipated increases in line pressure caused by the new well(s).

☐ Attach Operator's plan to manage production in response to the increased line pressure.

XIV. Confidentiality: ☐ Operator asserts confidentiality pursuant to Section 71-2-8 NMSA 1978 for the information provided in Section 2 as provided in Paragraph (2) of Subsection D of 19.15.27.9 NMAC, and attaches a full description of the specific information for which confidentiality is asserted and the basis for such assertion.

Section 3 - Certifications

Effective May 25, 2021

Operator certifies that, after reasonable inquiry and based on the available information at the time of submittal:

☒ Operator will be able to connect the well(s) to a natural gas gathering system in the general area with sufficient capacity to transport one hundred percent of the anticipated volume of natural gas produced from the well(s) commencing on the date of first production, taking into account the current and anticipated volumes of produced natural gas from other wells connected to the pipeline gathering system; or

☐ Operator will not be able to connect to a natural gas gathering system in the general area with sufficient capacity to transport one hundred percent of the anticipated volume of natural gas produced from the well(s) commencing on the date of first production, taking into account the current and anticipated volumes of produced natural gas from other wells connected to the pipeline gathering system.

If Operator checks this box, Operator will select one of the following:

Well Shut-In. ☐ Operator will shut-in and not produce the well until it submits the certification required by Paragraph (4) of Subsection D of 19.15.27.9 NMAC; or

Venting and Flaring Plan. ☐ Operator has attached a venting and flaring plan that evaluates and selects one or more of the potential alternative beneficial uses for the natural gas until a natural gas gathering system is available, including:

- (a) power generation on lease;
- (b) power generation for grid;
- (c) compression on lease;
- (d) liquids removal on lease;
- (e) reinjection for underground storage;
- (f) reinjection for temporary storage;
- (g) reinjection for enhanced oil recovery;
- (h) fuel cell production; and
- (i) other alternative beneficial uses approved by the division.

Section 4 - Notices

1. If, at any time after Operator submits this Natural Gas Management Plan and before the well is spud:

(a) Operator becomes aware that the natural gas gathering system it planned to connect the well(s) to has become unavailable or will not have capacity to transport one hundred percent of the production from the well(s), no later than 20 days after becoming aware of such information, Operator shall submit for OCD's approval a new or revised venting and flaring plan containing the information specified in Paragraph (5) of Subsection D of 19.15.27.9 NMAC; or

(b) Operator becomes aware that it has, cumulatively for the year, become out of compliance with its baseline natural gas capture rate or natural gas capture requirement, no later than 20 days after becoming aware of such information, Operator shall submit for OCD's approval a new or revised Natural Gas Management Plan for each well it plans to spud during the next 90 days containing the information specified in Paragraph (2) of Subsection D of 19.15.27.9 NMAC, and shall file an update for each Natural Gas Management Plan until Operator is back in compliance with its baseline natural gas capture rate or natural gas capture requirement.

2. OCD may deny or conditionally approve an APD if Operator does not make a certification, fails to submit an adequate venting and flaring plan which includes alternative beneficial uses for the anticipated volume of natural gas produced, or if OCD determines that Operator will not have adequate natural gas takeaway capacity at the time a well will be spud.

I certify that, after reasonable inquiry, the statements in and attached to this Natural Gas Management Plan are true and correct to the best of my knowledge and acknowledge that a false statement may be subject to civil and criminal penalties under the Oil and Gas Act.

Signature: <i>Alyssa McNear</i>
Printed Name: Alyssa McNear
Title: Engineering Manger
E-mail Address: adavanzo@tascosaep.com
Date: 08/31/2022
Phone: 720-244-4417
OIL CONSERVATION DIVISION (Only applicable when submitted as a standalone form)
Approved By:
Title:
Approval Date:
Conditions of Approval: