

Well Name: EL PASO FEDERAL	Well Location: T21S / R26E / SEC 1 / LOT 8 /	County or Parish/State: EDDY / NM
Well Number: 3H	Type of Well: CONVENTIONAL GAS WELL	Allottee or Tribe Name:
Lease Number: NMNM911	Unit or CA Name: EL PASO FEDERAL COM #3	Unit or CA Number: NMNM71962
US Well Number: 3001521307	Well Status: Gas Well Shut In	Operator: FASKEN OIL & RANCH LIMITED

Accepted for record – NMOCD gc9/2/2022

Notice of Intent

Sundry ID: 2681852

Type of Submission: Notice of Intent	Type of Action: Plug and Abandonment
Date Sundry Submitted: 07/13/2022	Time Sundry Submitted: 03:31
Date proposed operation will begin: 09/15/2022	

Procedure Description: Attached is the proposed, current WBD and proposed plan. We need more time to get a rig to PA.

Surface Disturbance

Is any additional surface disturbance proposed?: No

NOI Attachments

Procedure Description

El_Paso_Federal_3_NOI_PA_pkt_20220713145747.pdf

Well Name: EL PASO FEDERAL

Well Location: T21S / R26E / SEC 1 / LOT 8 /

County or Parish/State: EDDY / NM

Well Number: 3H

Type of Well: CONVENTIONAL GAS WELL

Allottee or Tribe Name:

Lease Number: NMNM911

Unit or CA Name: EL PASO FEDERAL COM #3

Unit or CA Number: NMNM71962

US Well Number: 3001521307

Well Status: Gas Well Shut In

Operator: FASKEN OIL & RANCH LIMITED

Conditions of Approval

Specialist Review

El_Paso_Federal_3H_Revised_P_A_Procedure_20220720104922.pdf

Operator

I certify that the foregoing is true and correct. Title 18 U.S.C. Section 1001 and Title 43 U.S.C. Section 1212, make it a crime for any person knowingly and willfully to make to any department or agency of the United States any false, fictitious or fraudulent statements or representations as to any matter within its jurisdiction. Electronic submission of Sundry Notices through this system satisfies regulations requiring a

Operator Electronic Signature: VIOLA VASQUEZ

Signed on: JUL 13, 2022 03:01 PM

Name: FASKEN OIL & RANCH LIMITED

Title: Regulatory Analyst

Street Address: 6101 HOLIDAY HILL ROAD

City: MIDLAND

State: TX

Phone: (432) 687-1777

Email address: VIOLAV@FORL.COM

Field

Representative Name:

Street Address:

City:

State:

Zip:

Phone:

Email address:

BLM Point of Contact

BLM POC Name: EBRU U BARRAZA

BLM POC Title: null

BLM POC Phone: 5752345719

BLM POC Email Address: EBARRAZA@BLM.GOV

Disposition: Approved

Disposition Date: 07/20/2022

Signature: Ebru Barraza

**Fasken Oil and Ranch, Ltd
El Paso Federal No. 3
1664' FNL and 660' FEL
Sec 1, T21S, R26E
Eddy County, New Mexico**

OBJECTIVE:		Permanently Abandon
API:		30-15-21307
Completed:		9-26-74 Rig released
WELL DATA:		
13-3/8" 54.5&61#/ft H-40 casing:		Set at 350' KB Cmt 200sx Howco Lite+100sx "C" w/2% cacl2 to 125'. Cmt to surface with 16 cubic yards ready mix.
8-5/8" 24&32# J55 casing:		Set at 4666' KB, Cmt 1400sx Howco Lite+200sx Thickset+160sx "C" w/2% cacl2 to 1600'. Filled to 75' with 1050 sx in 5 stgs.
4-1/2" 11.6&13.5# N-80 casing: (13.5#/ft btm 24jts 946.97'):		Set at 11,295' KB, Cmt 650 "C" w/7.6# kcl/sk +1% Halad-9. TOC 7720' by Temp.
Tubing and Packer2:		Arrowset 1X 10K packer (19k compression) w/ with 2-3/8" TOSSD 1.81" "F" PN (7.45'), X-over EUE to CS Hydril (0.63'), 305 jts 2-3/8" N-80 CS Hydril tubing (9,336.18'), X-over EUE to CS Hydril (0.63'), 8 jts 2-3/8" 4.7#/ft EUE 8rd N-80 tbg (253.47'). EOT 9,611.86' KB. NOTE: Tubing is perforated above packer for plunger lift.
Perfs:		Strawn 2/94: 9,714'-20' (7h), 9,733'-39' (7h), 9,750'-52' (3h), 9,755'-58' (4h), 9,768'-70' (3h), 9,783'-90' (8h), 9,798'-9,801' (4h), 9,875'-79' (5h). Total 42 holes. Strawn 7/76: 9,971'-89' (16h)
Packer1:		Otis Perma-lach @ 10,515.83' w/ "N" profile nipple in top of packer with "N" plug run 7-11-76.
Perfs:		Morrow (Inactive, 10/74): 10,983'-90' (37 hls)
TD:		11,450'
PBTD:		11,226'
Last Tubing Pull:		2-25-94
Current status:		SI ACO

1. Test mast anchors.
2. Set rig matting boards and half-frac open top workover tank. RUPU.
3. RU pump truck. Kill well down tubing with 40 bbls fresh water containing biocide, oxygen scavenger, and corrosion inhibitor.
4. NDWH and NU manual BOP.
5. Release Arrowset 1X 10k packer (19k compression) @ 9604'. NOTE: Bring two new EUE 8rd x CS Hydril crossovers in case of problems with threads.
6. POW with 8 jts 2-3/8" 4.7#/ft EUE 8rd N-80 tbg (253.47'), X-over EUE to CS Hydril (0.63'), 305 jts 2-3/8" N-80 CS Hydril tubing (9,336.18'), X-over EUE to CS Hydril (0.63'), Arrowset 1X 10K packer (19k compression) w/ with 2-3/8" TOSSD 1.81" "F" PN (7.45').
7. Receive 1,100' 2-3/8" 4.7#/ft EUE 8rd N-80 tubing.
8. RUWL and RIW with 4-1/2" 13.5#/ft CIBP, to Otis Perma-lach packer at 10,515.83'.
9. Lightly tag the "N" profile nipple on top of Otis Perma-lach packer, pull up 5' and set CIBP.

10. Dump bail 25 sx Class "H" cement on top of CIBP. POW.
11. RUWL. RIW with gauge ring and junk basket to PBTD. RIW and set 6K 4-1/2" CIBP (11.6#/ft) @ 9650' and cap with 35' of Class "H" cement for PBTD 9615'. RDWL.
12. RIW w/ 2-3/8" notched collar, SN, 2-3/8" EUE 8rd N-80 tubing to 7,870' and RU cement pump.
13. **Plug #3** : Mud up well with 9.5# salt gel mud with a minimum of 12.5 pounds of gel per barrel and mix and spot a 25 sx Class "H" cement plug at 7,870'-7720'.
14. POW and WOC 2 hours. RIW with tubing and **TAG** cement plug @ or above 7720' and notify Midland Office and BLM of the results. Then POW with 2-3/8" tbq.
15. RUWL and 3000 psi lubricator. RIW with 3-1/8" casing gun and perforate 4 squeeze holes at 4493. RDWL.
16. RIW with 4-1/2" AD-1 tension packer, SN, 2-3/8" EUE 8rd N80 tubing and set packer at +/-4200'.
17. **Plug #4**: Open 4-1/2" x 8-5/8" casing to pit. Squeeze perfs at 4493' with 30 sx Class "C" cement, displacing cement with 9.5 ppg gel laden mud to 4381' or above. WOC 2 hours. RIW with tubing and **TAG** cement plug @ or above 4381' and notify Midland Office and BLM of the results.
18. RUWL and 3000 psi lubricator. RIW with 3-1/8" casing gun and perforate 4 squeeze holes at 4716. RDWL.
19. RIW with 4-1/2" AD-1 tension packer, SN, 2-3/8" EUE 8rd N80 tubing and set packer at +/-4450'.
20. **Plug #5**: Open 4-1/2" x 8-5/8" casing to pit. Squeeze perfs at 4716' with 30 sx Class "C" cement, displacing cement with 9.5 ppg gel laden mud to 4604' or above. WOC 2 hours. RIW with tubing and **TAG** cement plug @ or above 4604' and notify Midland Office and BLM of the results.
21. RUWL and 3000 psi lubricator. RIW with 3-1/8" casing gun and perforate 4 squeeze holes at 2397'. RDWL.
22. RIW with 4-1/2" AD-1 tension packer, SN, 2-3/8" EUE 8rd N80 tubing and set packer at +/-2100'.
23. **Plug #6**: Open 4-1/2" x 8-5/8" casing to pit. Squeeze perfs at 2397' with 35 sx Class "C" cement, displacing cement with 9.5 ppg gel laden mud to 2267' or above. WOC 2 hours. RIW with tubing and **TAG** cement plug @ or above 2267' and notify Midland Office and BLM of the results.
24. RUWL and 3000 psi lubricator. RIW with 3-1/8" casing gun and perforate 4 squeeze holes at 400'. RDWL.
25. **Surface Plug**: Connect cement pump truck to casing. Establish injection rate into perfs. Mix and pump 135 sx class "C" cement and displace cement into perfs, making sure to fill well to surface with cement. Disconnect from wellhead and visually verify that cement is to surface. If not, lay hose into casing and fill up to just below surface with cement.
26. Dig out wellheads and cut-off below "A" section.
27. Weld plate onto casing with marker joint with well information.
28. Install 1" 2000 psi valve welded into top of marker joint. Remove valve handle and close valve.
29. Send wellheads to Downing Wellhead in Midland. Clean location, RDPU and release all rental equipment.

(SAS)

3/31/2022

Viola Vasquez

From: AFMSS <blm-afmss-notifications@blm.gov>
Sent: Wednesday, July 20, 2022 11:53 AM
To: Viola Vasquez
Subject: Well Name: EL PASO FEDERAL, Well Number: 3H, Notification of Sundry Approval

The Bureau of Land Management

Notice of Notice Of Intent Approval

- Operator Name: **FASKEN OIL & RANCH LIMITED**
- Well Name: **EL PASO FEDERAL**
- Well Number: **3H**
- US Well Number: **3001521307**
- Sundry ID: **2681852**

The BLM received your Notice Of Intent, Plug and Abandonment on 07/13/2022. This is to notify you that we are Approving your Notice Of Intent Plug and Abandonment. Please login to your account in AFMSS II to see the final documents.

If this Notice Of Intent prompted the BLM to create another work task, it will generate in your worklist.

You may contact the field office if you have any questions.

This notification is automatically generated. Please do not reply to this message as this account is not monitored.

Well: El Paso Federal No. 3

as of 2-25-94

Operator: Fasken Oil and Ranch, Ltd.

GL: 3236'

Location: 1664' FNL and 660' FEL

KB: 3252'

Sec 1, T21S, R26E

Eddy County, NM

Compl.: 9/26/1974 Released rig

API #: 30-015-21307

TD: 11,450'

PBTB: 11,226'

Casing: 13-3/8" 54.5#&61# H-40 @ 350'

w/200sx Halliburton Lite + 100 sx"C" +2% CaCl2 to 125'

TOC surf, w/16cuyds ready mix

8-5/8" 24&32# J-55 @ 4666' KB

w/1400sx Howco Lite+200sx Thickset+ 160sx"C" w/ 2% CaCl2

to 1600', filled in 5stgs with 1050sx

TOC 75'

4-1/2" 11.6&13.5# N-80 @ 11,295'

Bottom 24 joints (946.97') are 13.5#/ft

Cmt w/ 650sx "C" w/7.6# kcl/sk +1% Halad-9

TOC 4-1/2" 7720' by Temp

Tubing: 4-1/2"x2-3/8" Arrowset 1-10k pkr2

2/25/1994 with 2-3/8" TOSSD 1.81" "F" PN 7.45

X-over EUE to CS Hydril 0.63

305- jts 2-3/8" N-80 CS Hydril tbq 9336.18

X-over EUE to CS Hydril 0.63

8- jts 2-3/8" 4.7# EUE 8rd N-80 tbq 253.47

Below KB' 13.50

EOT: 9611.86

Pkr2: 9604.41

Pkr1: Otis Perma-lach w/PN and "N" plg 10,515.83
run 7-11-76.

Strawn: Reported in Burton Flat, W. (Strawn) pool

2/26/1994 9714'-20' 7h

2/26/1994 9733'-39' 7h

2/25/1994 9750'-52' 3h

2/25/1994 9755'-58' 4h

2/25/1994 9768'-70' 3h

2/25/1994 9783'-90' 8h

2/25/1994 9,798'-9,801' 4h

2/25/1994 9,875'-79' 5h

7/16/1976 9,971'-89' 16h

Morrow

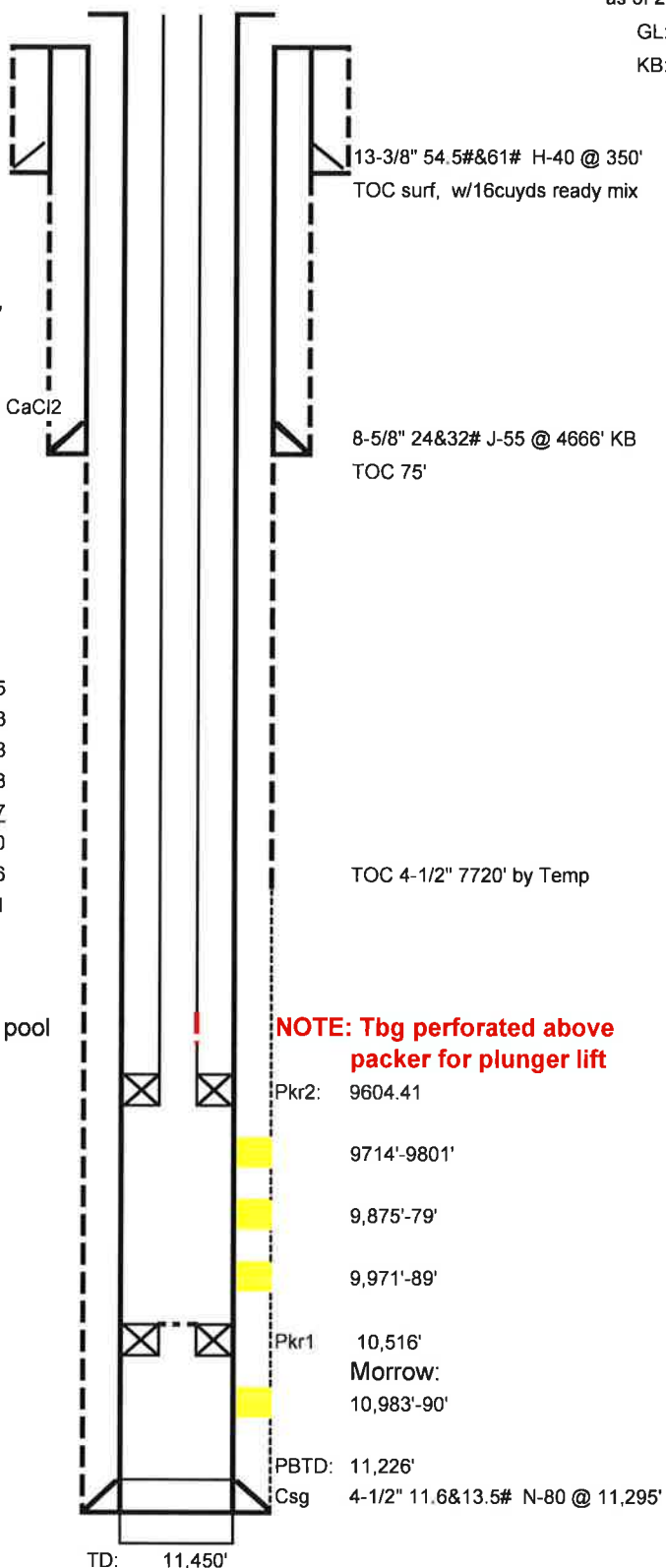
10/9/1974 10,983'-90' (7h, 1jspf)

re-perf 10/0/1974 10,983'-90' (15h, 2jspf)

re-perf 10/0/1974 10,983'-90' (15h, 2jspf)

Hole sizes: 17-1/2" to 350'; 12-1/4" to 4,666'; 7-7/8" to 11,450'

Status: Shut-in Agreed Compliance Order.

cwb
4/1/2022
EP3 wb diagram.xls

Proposed 4-1-22Well: **El Paso Federal No. 3**Operator: **Fasken Oil and Ranch, Ltd.** [Tops](#)

Location: 1664' FNL and 660' FEL

Sec 1, T21S, R26E

Eddy County, NM

Compl.: 9/26/1974 Released rig

API #: 30-015-21307

TD: 11,450'

PBDT: 11,226'

Casing: **13-3/8" 54.5#&61# H-40 @ 350'** [Delwre sd 2538'](#)

w/200sx Halliburton Lite + 100 sx"C" +2% CaCl2 to 125'

TOC surf, w/16cuyds ready mix

8-5/8" 24&32# J-55 @ 4666' KB [BS Lime 4635'](#)

w/1400sx Howco Lite+200sx Thickset+ 160sx"C" w/ 2% CaCl2 to 1600', filled in 5stgs with 1050sx

TOC 75'

4-1/2" 11.6&13.5# N-80 @ 11,295' [1BS sand 5616'](#)

Btm 24 jts (946.97') are 13.5#/ft, Top at +/-10,348'

Cmt w/ 650sx "C" w/7.6# kcl/sk +1% Halad-9

TOC 4-1/2" 7720' by Temp

[2BS sand 6168'](#)

Tubing: Proposed

305- jts 2-3/8" N-80 CS Hydril tbg 9336.18

X-over EUE to CS Hydril 0.63

8- jts 2-3/8" 4.7# EUE 8rd N-80 tbg [253.47](#)

Below KB' 13.50

EOT: 9603.78

surface plug with 135 sx C cmt (surface) [3BS sand 8228'](#)**Plug 6 with 35 sx C cmt (2267 ')****Plug 5 with 30 sx C cmt (4604 ')** [Wolfcamp 8752'](#)**Plug 4 with 30 sx C cmt (4381 ')****Plug 3 with 25 sx C cmt (7489 ')** [Penn 9606'](#)**Plug2 with 35 ft "H" cmnt (9615')** 10,160**CIBP 9,650****Plug1 with 25sx "H" cmnt (10160')** 10,160**CIBP 10,510****Pkr: Otis Perma-lach w/PN and "N" plg 10,515.83**

run 7-11-76.

(Note: top of 13.5#/ft csg +/-10,348')

[Morrow Cl 10842'](#)

Strawn: Rprtd in Burton Flat, W. (Strawn) pool

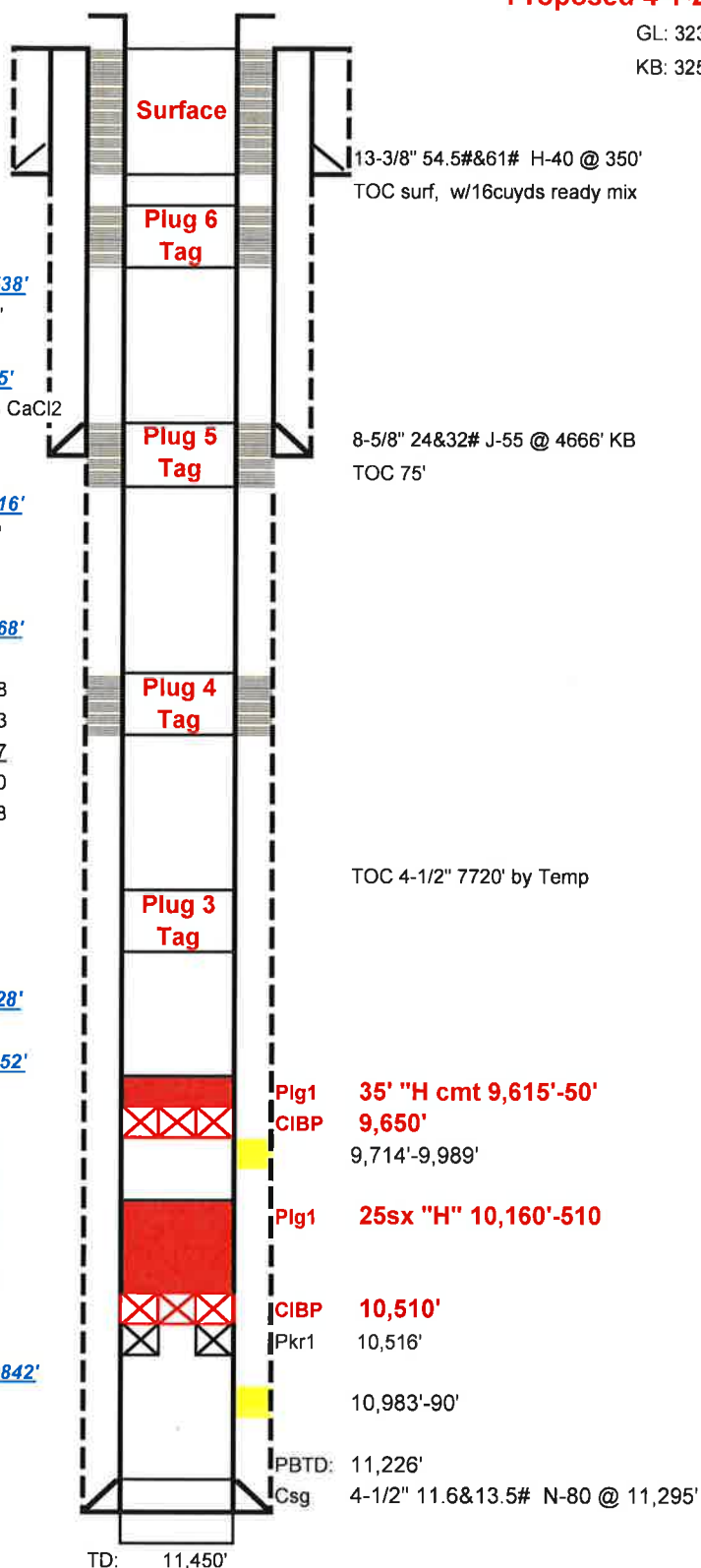
9,714'-9,989'

Morrow

10,983'-90'

Hole sizes: 17-1/2" to 350'; 12-1/4" to 4,666'; 7-7/8" to 11,450'

Status: Shut-in Agreed Compliance Order.



cwb

4/1/2022

EP3 wb diagram.xls

District I
1625 N. French Dr., Hobbs, NM 88240
Phone:(575) 393-6161 Fax:(575) 393-0720
District II
811 S. First St., Artesia, NM 88210
Phone:(575) 748-1283 Fax:(575) 748-9720
District III
1000 Rio Brazos Rd., Aztec, NM 87410
Phone:(505) 334-6178 Fax:(505) 334-6170
District IV
1220 S. St Francis Dr., Santa Fe, NM 87505
Phone:(505) 476-3470 Fax:(505) 476-3462

State of New Mexico
Energy, Minerals and Natural Resources
Oil Conservation Division
1220 S. St Francis Dr.
Santa Fe, NM 87505

CONDITIONS

Action 139728

CONDITIONS

Operator: FASKEN OIL & RANCH LTD 6101 Holiday Hill Rd Midland, TX 79707	OGRID: 151416
	Action Number: 139728
	Action Type: [C-103] NOI Plug & Abandon (C-103F)

CONDITIONS

Created By	Condition	Condition Date
gcordero	None	9/2/2022