

Well Name: PENNZOIL FED	Well Location: T22S / R27E / SEC 10 / NWNE /	County or Parish/State: EDDY / NM
Well Number: 2	Type of Well: OIL WELL	Allottee or Tribe Name:
Lease Number: NMNM0473303A	Unit or CA Name:	Unit or CA Number:
US Well Number: 3001522680	Well Status: Producing Oil Well	Operator: MATADOR PRODUCTION COMPANY

Accepted for record – NMOCD gc 9/27/2022

Notice of Intent

Sundry ID: 2689969

Type of Submission: Notice of Intent	Type of Action: Plug and Abandonment
Date Sundry Submitted: 08/31/2022	Time Sundry Submitted: 12:32
Date proposed operation will begin: 09/15/2022	

Procedure Description: Matador is requesting to plug and abandon the Pennzoil Federal #2, per the required COA, following the procedure below: • Notify BLM 24 hrs before MIRU. • Safety mtg, MIRU, check pressures, ND wellhead, NU BOPs & POOH w/ rods and tbg. • Set CIBP @ 3,380'. Spot 25 sks CI C cmt on top of CIBP. Pressure test csg. Circ and displace hole w/ MLF. • RIH and spot 25 sks CI C cmt from 2,450' – 2,550'. (TOC outside csg) • Perf @ 1924' & sqz 40 sx CI C cmt from 1924-1773'. (Top of Delaware) • Perf @ 508' & sqz CI C cmt to surface. (Surface Shoe) • Cut off wellhead and ensure cmt to surface on all csg strings. • Install dry hole marker per BLM/NMOCD specifications. *Current and proposed wellbore diagrams attached **Mud laden fluid (MLF) mixed at 25sx/100 bbls water will be spotted between each plug.

Surface Disturbance

Is any additional surface disturbance proposed?: No

NOI Attachments

Procedure Description

Pennzoil_Federal_2_Current_and_Proposed_WBD__20220831123242.pdf

Well Name: PENNZOIL FED

Well Location: T22S / R27E / SEC 10 / NWNE /

County or Parish/State: EDDY / NM

Well Number: 2

Type of Well: OIL WELL

Allottee or Tribe Name:

Lease Number: NMNM0473303A

Unit or CA Name:

Unit or CA Number:

US Well Number: 3001522680

Well Status: Producing Oil Well

Operator: MATADOR PRODUCTION COMPANY

Conditions of Approval

Specialist Review

Pennzoil_Fed_2_Sundry_ID_2689969_P_A_20220909123041.pdf

Operator

I certify that the foregoing is true and correct. Title 18 U.S.C. Section 1001 and Title 43 U.S.C. Section 1212, make it a crime for any person knowingly and willfully to make to any department or agency of the United States any false, fictitious or fraudulent statements or representations as to any matter within its jurisdiction. Electronic submission of Sundry Notices through this system satisfies regulations requiring a

Operator Electronic Signature: BRETT JENNINGS

Signed on: AUG 31, 2022 12:32 PM

Name: MATADOR PRODUCTION COMPANY

Title: Regulatory Analyst

Street Address: 5400 LBJ FREEWAY, STE 1500

City: DALLAS

State: TX

Phone: (972) 629-2160

Email address: BRETT.JENNINGS@MATADORRESOURCES.COM

Field

Representative Name:

Street Address:

City:

State:

Zip:

Phone:

Email address:

BLM Point of Contact

BLM POC Name: LONG VO

BLM POC Title: Petroleum Engineer

BLM POC Phone: 5752345972

BLM POC Email Address: LVO@BLM.GOV

Disposition: Approved

Disposition Date: 09/09/2022

Signature: Long Vo

Pennzoil Federal #2 P&A Sundry:

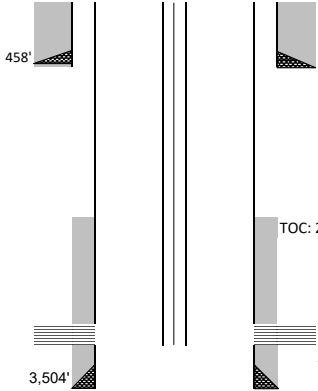
Matador is requesting to plug and abandon the Pennzoil Federal #2, per the required COA, following the procedure below:

- Notify BLM 24 hrs before MIRU.
- Safety mtg, MIRU, check pressures, ND wellhead, NU BOPs & POOH w/ rods and tbg.
- Set CIBP @ 3,380'. Spot 25 sks Cl C cmt on top of CIBP. Pressure test csg. Circ and displace hole w/ MLF.
- RIH and spot 25 sks Cl C cmt from 2,450' – 2,550'. (TOC outside csg)
- Perf @ 1924' & sqz 40 sx Cl C cmt from 1924-1773'. (Top of Delaware)
- Perf @ 508' & sqz Cl C cmt to surface. (Surface Shoe)
- Cut off wellhead and ensure cmt to surface on all csg strings.
- Install dry hole marker per BLM/NMOCD specifications.

*Current and proposed wellbore diagrams attached

**Mud laden fluid (MLF) mixed at 25sx/100 bbls water will be spotted between each plug.

Pennzoil Federal #2
660' FNL 2310' FEL Sec. 10-T-22S-R27E
Eddy County, NM
API: 30-015-22680
CURRENT WELLBORE SCHEMATIC
Spudded: 9/21/78



Casing Information					
Casing String	Casing Size	Weight lb/ft	Depth Set	Hole Size	Cementing Record
Surface	8 5/8"	24# K-55	458'	12 1/4"	400 sx, circulated to surface
Production	4 1/2"	10.5-11.6# K-55	3,504'	7 7/8"	200 sx, TOC: 2,500'

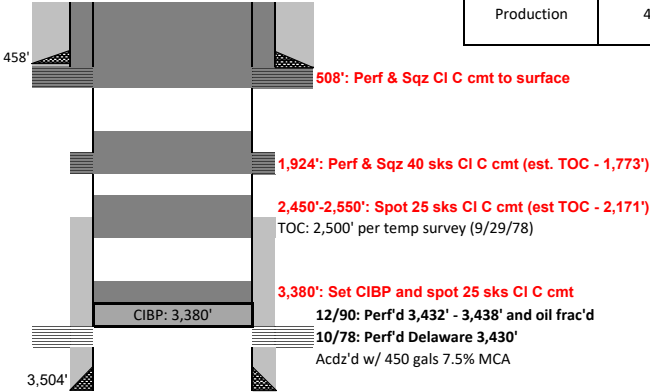
Geologic Markers	
Top Salt	470
Base Salt	1480
Top Delaware	1874
Top Delaware Sand	2050
Top Manzanita	2820

TOC: 2,500' per temp survey (9/29/78)

12/90: Perf'd 3,432' - 3,438' and oil frac'd
10/78: Perf'd Delaware 3,430'
Acdz'd w/ 450 gals 7.5% MCA

Pennzoil Federal #2
660' FNL 2310' FEL Sec. 10-T-22S-R27E
Eddy County, NM
API: 30-015-22680

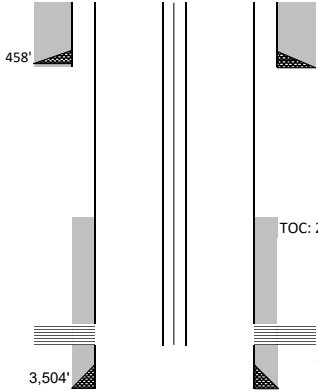
PROPOSED P&A WELLBORE SCHEMATIC



Casing Information					
Casing String	Casing Size	Weight lb/ft	Depth Set	Hole Size	Cementing Record
Surface	8 5/8"	24# K-55	458'	12 1/4"	400 sx, circulated to surface
Production	4 1/2"	10.5-11.6# K-55	3,504'	7 7/8"	200 sx, TOC: 2,500'

Geologic Markers	
Top Salt	470
Base Salt	1480
Top Delaware	1874
Top Delaware Sand	2050
Top Manzanita	2820

Pennzoil Federal #2
660' FNL 2310' FEL Sec. 10-T-22S-R27E
Eddy County, NM
API: 30-015-22680
CURRENT WELLBORE SCHEMATIC
Spudded: 9/21/78



TOC: 2,500' per temp survey (9/29/78)

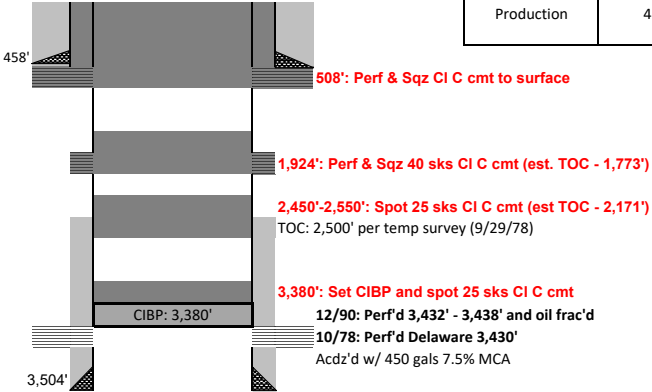
12/90: Perf'd 3,432' - 3,438' and oil frac'd
10/78: Perf'd Delaware 3,430'
Acdz'd w/ 450 gals 7.5% MCA

Casing Information					
Casing String	Casing Size	Weight lb/ft	Depth Set	Hole Size	Cementing Record
Surface	8 5/8"	24# K-55	458'	12 1/4"	400 sx, circulated to surface
Production	4 1/2"	10.5-11.6# K-55	3,504'	7 7/8"	200 sx, TOC: 2,500'

Geologic Markers	
Top Salt	470
Base Salt	1480
Top Delaware	1874
Top Delaware Sand	2050
Top Manzanita	2820

Pennzoil Federal #2
660' FNL 2310' FEL Sec. 10-T-22S-R27E
Eddy County, NM
API: 30-015-22680

PROPOSED P&A WELLBORE SCHEMATIC



Casing Information					
Casing String	Casing Size	Weight lb/ft	Depth Set	Hole Size	Cementing Record
Surface	8 5/8"	24# K-55	458'	12 1/4"	400 sx, circulated to surface
Production	4 1/2"	10.5-11.6# K-55	3,504'	7 7/8"	200 sx, TOC: 2,500'

Geologic Markers	
Top Salt	470
Base Salt	1480
Top Delaware	1874
Top Delaware Sand	2050
Top Manzanita	2820

District I
1625 N. French Dr., Hobbs, NM 88240
Phone:(575) 393-6161 Fax:(575) 393-0720
District II
811 S. First St., Artesia, NM 88210
Phone:(575) 748-1283 Fax:(575) 748-9720
District III
1000 Rio Brazos Rd., Aztec, NM 87410
Phone:(505) 334-6178 Fax:(505) 334-6170
District IV
1220 S. St Francis Dr., Santa Fe, NM 87505
Phone:(505) 476-3470 Fax:(505) 476-3462

State of New Mexico
Energy, Minerals and Natural Resources
Oil Conservation Division
1220 S. St Francis Dr.
Santa Fe, NM 87505

CONDITIONS

Action 144623

CONDITIONS

Operator: MATADOR PRODUCTION COMPANY One Lincoln Centre Dallas, TX 75240	OGRID: 228937
	Action Number: 144623
	Action Type: [C-103] NOI Plug & Abandon (C-103F)

CONDITIONS

Created By	Condition	Condition Date
gcordero	None	9/27/2022