

Well Name: CANYON LARGO UNIT	Well Location: T25N / R6W / SEC 30 / SWNW / 36.37254 / -107.514221	County or Parish/State: RIO ARRIBA / NM
Well Number: 494	Type of Well: CONVENTIONAL GAS WELL	Allottee or Tribe Name:
Lease Number: NMSF078875	Unit or CA Name: CANYON LARGO UNIT--GLLP/MNCS	Unit or CA Number: NMNM78383C
US Well Number: 3003930053	Well Status: Producing Gas Well	Operator: HILCORP ENERGY COMPANY

Notice of Intent

Sundry ID: 2695790

Type of Submission: Notice of Intent	Type of Action: Plug and Abandonment
Date Sundry Submitted: 09/30/2022	Time Sundry Submitted: 12:01
Date proposed operation will begin: 10/07/2022	

**Procedure Description:** Hilcorp Energy Company requests permission to P&A the subject well per the attached procedures, current and proposed wellbore schematics. The Pre-Disturbance Site Visit was held on 9/28/22 with Roger Herrera/BLM. The Re-Vegetation Plan is attached. A closed loop system will be used.

Surface Disturbance

Is any additional surface disturbance proposed?: No

NOI Attachments

Procedure Description

- Canyon\_Largo\_494\_PA\_Procedure\_for\_NOI\_20220930120037.pdf
- CANYON\_LARGO\_UNIT\_494\_Reclamation\_Plan\_20220930120036.pdf

<b>Well Name:</b> CANYON LARGO UNIT	<b>Well Location:</b> T25N / R6W / SEC 30 / SWNW / 36.37254 / -107.514221	<b>County or Parish/State:</b> RIO ARRIBA / NM
<b>Well Number:</b> 494	<b>Type of Well:</b> CONVENTIONAL GAS WELL	<b>Allottee or Tribe Name:</b>
<b>Lease Number:</b> NMSF078875	<b>Unit or CA Name:</b> CANYON LARGO UNIT--GLLP/MNCS	<b>Unit or CA Number:</b> NMNM78383C
<b>US Well Number:</b> 3003930053	<b>Well Status:</b> Producing Gas Well	<b>Operator:</b> HILCORP ENERGY COMPANY

Conditions of Approval

Additional

25N06W30EKd\_Canyon\_Largo\_Unit\_494\_20221012170303.pdf

Authorized

General\_Requirement\_PxA\_20221018080740.pdf

2695790\_NOIA\_494\_3003930053\_KR\_10182022\_20221018080645.pdf

Operator

I certify that the foregoing is true and correct. Title 18 U.S.C. Section 1001 and Title 43 U.S.C. Section 1212, make it a crime for any person knowingly and willfully to make to any department or agency of the United States any false, fictitious or fraudulent statements or representations as to any matter within its jurisdiction. Electronic submission of Sundry Notices through this system satisfies regulations requiring a

**Operator Electronic Signature:** KANDIS ROLAND

**Signed on:** SEP 30, 2022 12:00 PM

**Name:** HILCORP ENERGY COMPANY

**Title:** Operation Regulatory Tech

**Street Address:** 382 Road 3100

**City:** Farmington **State:** NM

**Phone:** (505) 599-3400

**Email address:** kroland@hilcorp.com

Field

**Representative Name:**

**Street Address:**

**City:** **State:** **Zip:**

**Phone:**

**Email address:**

BLM Point of Contact

**BLM POC Name:** KENNETH G RENNICK

**BLM POC Title:** Petroleum Engineer

**BLM POC Phone:** 5055647742

**BLM POC Email Address:** krennick@blm.gov

**Disposition:** Approved

**Disposition Date:** 10/18/2022

**Signature:** Kenneth Rennick



## P&A Procedure

General Information			
<b>Well Name</b>	Canyon Largo 494	<b>Date:</b>	9/29/2022
<b>API:</b>	30-039-0053	<b>AFE #</b>	
<b>Field:</b>	San Juan South, 910	<b>County</b>	San Juan
<b>Status:</b>	Well is ACOI		
<b>Subject:</b>	Permanently P&A wellbore		
<b>By:</b>	M. Wissing		

### Well Data

SPUD: 9/14/08

Surface Casing: 8-5/8" 24# J-55 at 329'

Production Casing: 4-1/2" J-55 11.6# 8rd at 7,390'

Production Tubing: 2-3/8" 4.7# J-55 8rd at 6,505' (10/2010)

Rod String: 257 3/4" rods with insert pump (5/12)

Current Perforations: 6,078'-6,422' (Gallup)

Current PBTD: 6,950' (CIBP)

SICP = 64 psig; SIBP: 64 psi (8/22)

Notes: History on paraffin. Might need hot water truck or solvent to release rods out of wellbore.

Hold PJSM prior to begin all operations. Properly document all operations via the JSA process. Ensure that all personnel onsite abide by HEC safety protocol, including PPE, housekeeping, and standard guidelines. Verify cathodic protection is off and wellhead instrumentation is properly disconnected from the wellhead. Comply with all NMOCD, BLM, and HEC safety and environmental regulations. Verify there is no H<sub>2</sub>S present prior to beginning operations. If any H<sub>2</sub>S is present, take the necessary actions to ensure that the location is safe prior to beginning operations. Observe and record pressures across all strings daily, prior to beginning operations. All cement volumes and depths include a 50' volume of excess of cement.

Remember to notify NMOCD & BLM 24 hours prior to starting operations on location. This procedure is contingent upon P&A sundry approval by the NMOCD & BLM.

P&A Rig Procedure: Canyon Largo 494

1. MIRU P&A rig and equipment. Record pressures on all strings daily.
2. *Monitor BH pressure during project.*
3. Blow down well, kill well as needed with water.
4. Unseat and TOOH with rod string.
  - a. Paraffin history, consider a hot water flush truck or chemical solvent to clear rod string once unset.
5. ND wellhead and NU 5k BOP. Pressure test BOP.
6. Release tbg hanger, release tbg anchor at 5,810' (15k tension), and LD entire 2-3/8" prod tbg + perforated BHA at 6,505'.
7. MU 2-3/8" work string (7,000' needed)
8. RIH and tag existing CIBP at 6,950'. Attempt to circulate or find fluid level.
9. **Plug #1 (Dakota):** RU cementers and pump a 150' balanced cmt plug inside the 4-1/2" csg from 6,800'-6,980', using 2.5 bbls (12 sx) of 15.8+ ppg Class G cmt.
  - a. *Use fluid level to adjust cmt displacement for blind plug.*
10. While WOC, MU 4-1/2" csg scraper and RIH, clear csg to 6,050'. POOH.
11. RIH and tag TOC and record depth.
12. MU 4-1/2' CICR and RIH. Set CICR at 6,040'. Roll hole and circulate well clean.
13. Pressure test casing to 500 psi to verify integrity.
14. **Plug #2 (Gallup top at 6,100'):** RU cementers and pump a 150' balanced cmt plug inside the 4-1/2" csg from 5,890'-6,040', using 2.5 bbls (12 sx) of 15.8+ ppg Class G cmt.
15. **Plug #3 (Mancos Formation Top at 5,120'):** RU cementers and pump a 150' balanced cmt plug inside the 4-1/2" csg from 5,020'-5,170', using 2.5 bbls (12 sx) of 15.8+ ppg Class G cmt.
16. **Plug #4 (Mesa Verde formation top at 4,190'):** RU cementers and pump a 150' balanced cmt plug inside the 4-1/2" csg from 4,090' - 4,240' using 2.5 bbls (12 sx) of 15.8+ ppg Class G cmt.

17. **Plug #5 (Chacra top at 3,492')**: RU cementers and pump a 150' cement plug inside the 4-1/2" csg from 3,392'-3,542', using 2.5 bbls (12 sx) of 15.8+ ppg Class G cmt.
18. **Plug #6 (PC top at 2,640')**: RU cementers and pump a 150' cement plug inside the 4-1/2" csg from 2,540'-2,690', using 2.5 bbls (12 sx) of 15.8+ ppg Class G cmt.
19. **Plug #7 (FRC top at 2,294', Kirtland top at 2,100')**: RU cementers and pump a 344' cement plug inside the 4-1/2" csg from 2,000-2,344', using 5.5 bbls (27 sx) of 15.8+ ppg Class G cmt.
20. Monitor BH pressure after cmt plug is pumped. Adjust all future plugs based on BH pressure.
21. **Plug #8 (Ojo top at 1,894')**: RU cementers and pump a 150' cement plug inside the 4-1/2" csg from 1,794'-1,944', using 2.5 bbls (12 sx) of 15.8+ ppg Class G cmt.
22. RU E-line and MU perf charges (circulation charges). Perf 4-1/2" csg at 300'.
  - a. See CBL log on bond. Csg Shoe is at 329'.
23. **Plug #9 (Surface casing shoe at 329')**: RU cementers and circulate a 300' cmt plug inside 4-1/2" csg and 8-5/8" x 4-1/2" csg annulus from 0' – 300', using 18 bbls (88 sx) of 15.8+ ppg Class G cmt. Bring cmt to surface.
  - a. *Based on CBL, not sure if circulation will be achieved. Need to monitor BH pressure and make sure it is at 0 psi.*
24. Verify all pressures on all strings are at 0 psi.
25. ND BOP. Tag cmt and top off wellbore as needed. Cutoff wellhead at surface and weld on P&A marker.
26. RDMO P&A rig.



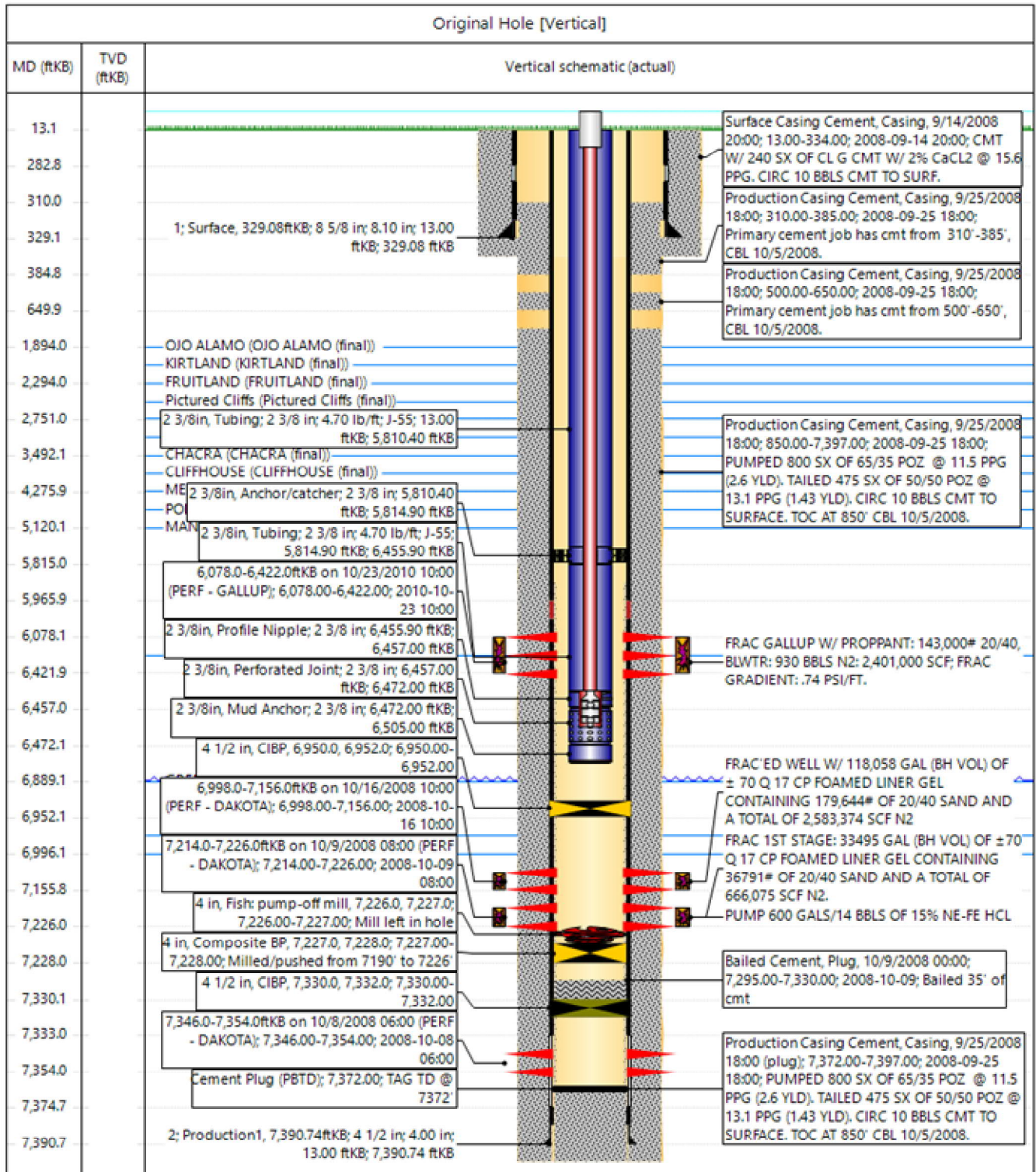


Hilcorp Energy Company

## Current Schematic - Completion Comments

Well Name: CANYON LARGO UNIT #494

API / UWI 3003930053	Surface Legal Location E-30-25N-06W	Field Name	Route 0910	State/Province NEW MEXICO	Well Configuration Type Vertical
Ground Elevation (ft) 6,860.00	Original KB RT Elevation (ft) 6,873.00	KB-Ground Distance (ft) 13.00	KB-Casing Flange Distance (ft)	KB-Tubing Hanger Distance (ft)	



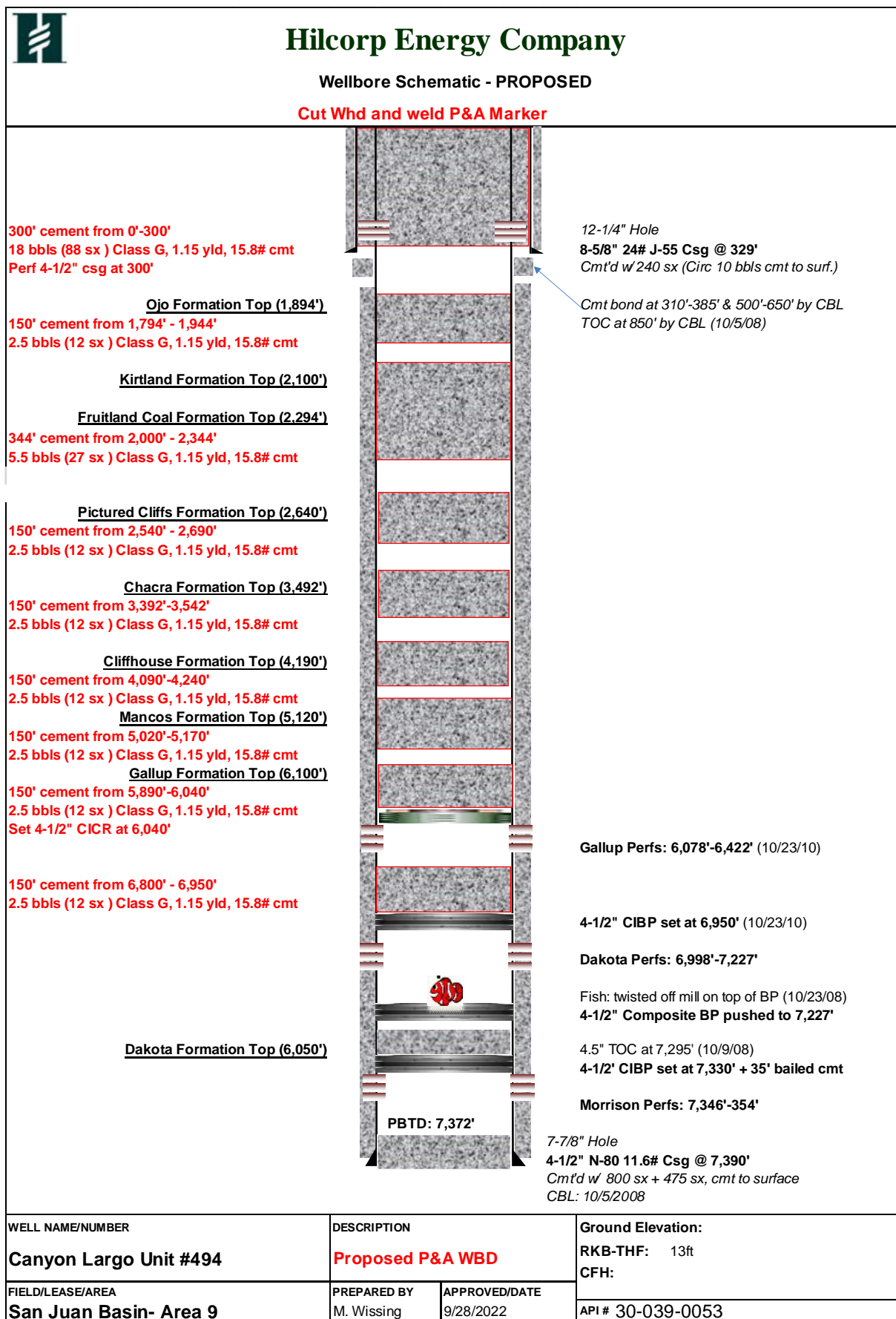
www.peleton.com

Page 1/1

Report Printed: 9/29/2022



Hilcorp Energy Company



Hilcorp Energy  
P&A Final Reclamation Plan  
**CANYON LARGO UNIT 494**  
API: 30-039-30053  
T25N-R6W-Sec. 30-Unit E  
LAT: 36.37255 LONG: -107.51359 NAD 27  
Footage: 1965' FNL & 845' FWL  
Rio Arriba County, NM

**1. PRE- RECLAMATION SITE INSPECTION**

A pre-reclamation site inspection was completed with Roger Herrera from the BLM and Eufracio Trujillo, Hilcorp Energy SJ South Construction Foreman on September 28, 2022.

**2. LOCATION RECLAMATION PROCEDURE**

1. Reclamation work will begin in the fall.
2. Removal of all equipment, anchors, flowlines, and pipelines.
3. All trash and debris will be removed within a 50' buffer outside of the location disturbance during reclamation.
4. Close out BGT after sampling has been performed and meets closure standards.
5. Rip compacted soil and walk down disturbed portion of well pad.
6. Location will be reclaimed by rolling Northwest corner to western side where small hill is.
7. Roll northeastern corner into southeastern corner.
8. Remove all gravel from berms, pads, and meter run and use on lease road where needed.
9. Enterprise meter run will be removed out of their ROW. Remove riser.
10. Enterprise to cut and cap pipeline 50' off of the well pad.

**3. ACCESS ROAD RECLAMATION PROCEDURE**

1. The well access road will remain intact as the road services another well location past this pad.
2. Insert diversion ditches along the sides of the road left in for the location past this well pad .
3. Insert water bar at northern edge where road drops off of well pad if needed.

**4. SEEDING PROCEDURE**

1. A Sagebrush seed mix will be used for all reclaimed and disturbed areas of the well pad.
2. Drill seed will be done where applicable, and all other disturbed areas will be broadcast seeded and harrowed. Broadcast seeding will be applied at a double the rate of seed.
3. Timing of the seeding will be when the ground is not frozen or saturated.

**5. WEED MANAGEMENT**

1. No weeds were identified during this onsite.



**GENERAL REQUIREMENTS FOR  
PERMANENT ABANDONMENT OF WELLS ON FEDERAL AND INDIAN LEASES  
FARMINGTON FIELD OFFICE**

- 1.0 The approved plugging plans may contain variances from the following minimum general requirements.
- 1.1 Modification of the approved plugging procedure is allowed only with the prior approval of the Authorized Officer, Farmington Field Office.
  - 1.2 Requirements may be added to address specific well conditions.
- 2.0 Materials used must be accurately measured. (densometer/scales)
- 3.0 A tank or lined pit must be used for containment of any fluids from the wellbore during plugging operations and all pits are to be fenced with woven wire. These pits will be fenced on three sides and once the rig leaves location, the fourth side will be fenced.
- 3.1 Pits are not to be used for disposal of any hydrocarbons. If hydrocarbons are present in the pit, the fluids must be removed prior to filling in.
- 4.0 All cement plugs are to be placed through a work string. Cement may be bull-headed down the casing with prior approval. Cement caps on top of bridge plugs or cement retainers may be placed by dump bailer.
- 4.1 The cement shall be as specified in the approved plugging plan.
  - 4.2 All cement plugs placed inside casing shall have sufficient volume to fill a minimum of 100' of the casing, or annular void(s) between casings, plus an excess volume sufficient to provide for 50 linear feet of fill above the plug.
  - 4.3 Surface plugs may be no less than 50' in length.
  - 4.4 All cement plugs placed to fill annular void(s) between casing and the formation shall be of sufficient volume to fill a minimum of 100' of the annular space plus 100% excess, calculated using the bit size, or 100' of annular capacity, determined from a caliper log, plus an excess volume sufficient to provide for 50 linear feet of fill above the plug.
  - 4.5 All cement plugs placed to fill an open hole shall be of sufficient volume to fill a minimum of 100' of hole, as calculated from a caliper log, plus an excess volume sufficient to provide for 50 linear feet of fill above the plug. In the absence of a caliper log, an excess of 100% shall be required.
  - 4.6 **A cement bond log or other accepted cement evaluation tool is required to be run if one had not been previously ran or cement did not circulate to surface during the original casing cementing job or subsequent cementing jobs.**

5.0 All cement plugs spotted across, or above, any exposed zone(s), when; the wellbore is not full of fluid or the fluid level will not remain static, and in the case of lost circulation or partial returns during cement placement, shall be tested by tagging with the work string.

- 5.1 The top of any cement plug verified by tagging must be at or above the depth specified in the approved plan, without regard to any excess.
- 5.2 Testing will not be required for any cement plug that is mechanically contained by use of a bridge plug and/or cement retainer, if casing integrity has been established.
- 5.3 Any cement plug which is the only isolating medium, for a fresh water interval or a zone containing a prospectively valuable deposit of minerals, shall be tested by tagging.
- 5.4 If perforations are required below the surface casing shoe, a 30 minute minimum wait time will be required to determine if gas and/or water flows are present. If flow is present, the well will be shut-in for a minimum of one hour and the pressure recorded. Short or long term venting may be necessary to evacuate trapped gas. **If only a water flow occurs with no associated gas, shut well in and record the pressures. Contact the Engineer as it may be necessary to change the cement weight and additives.**

6.0 Before setting any cement plugs the hole needs to be rolled. All wells are to be controlled by means of a fluid that is to be of a weight and consistency necessary to stabilize the wellbore. This fluid shall be left in place as filler between all plugs.

- 6.1 Drilling mud may be used as the wellbore fluid in open hole plugging operations.
- 6.2 The wellbore fluid used in cased holes shall be of sufficient weight to balance known pore pressures in all exposed formations.

7.0 A blowout preventer and related equipment (BOPE) shall be installed and tested prior to working in a wellbore with any exposed zone(s); (1) that are over pressured, (2) where the pressures are unknown, or (3) known to contain H<sub>2</sub>S.

8.0 Within 30 days after plugging work is completed, file a Sundry Notice, Subsequent Report of Abandonment (Form 3160-5), five copies, with the Field Manager, Bureau of Land Management, 6251 College Blvd., Suite A, Farmington, NM 87402. The report should show the manner in which the plugging work was carried out, the extent, by depth(s), of cement plugs placed, and the size and location, by depth(s), of casing left in the well. Show date well was plugged.

9.0 All permanently abandoned wells are to be marked with a permanent monument as specified in 43 CFR 3162.6(d). Unless otherwise approved.

10.0 If this well is located in a Specially Designated Area (SDA), compliance with the appropriate seasonal closure requirements will be necessary.

All of the above are minimum requirements. Failure to comply with the above conditions of approval may result in an assessment for noncompliance and/or a Shut-in Order being issued pursuant to 43 CFR 3163.1. You are further advised that any instructions, orders or decisions issued by the Bureau of Land Management are subject to administrative review pursuant to 43 CFR 3165.3 and appeal pursuant to 43 CFR 3165.4 and 43 CFR 4.700.

(October 2012 Revision)

# BLM FLUID MINERALS P&A Geologic Report

**Date Completed:** 10/12/2022

Well No. Canyon Largo Unit #494 (API# 30-039-30053)	Location	1965	FNL	&	845	FWL
Lease No. NMNM78383C	Sec. 30	T25N			R06W	
Operator Hilcorp Energy Company	County	Rio Arriba		State	New Mexico	
Total Depth 7397'	PBTD 6950'	Formation Dakota				
Elevation (GL) 6860'		Elevation (KB) 6873'				

Geologic Formations	Est. Top	Est. Bottom	Log Top	Log Bottom	Remarks
San Jose					
Nacimiento			Surface	1894	Surface/possible freshwater sands
Ojo Alamo Ss			1894	2100	Aquifer (possible freshwater)
Kirtland Shale			2100	2294	Possible gas
Fruitland			2294	2640	Coal/Gas/Water
Pictured Cliffs Ss			2640	2751	Probable Gas
Lewis Shale			2751	3492	
Chacra			3492	4190	Possible Gas
Cliff House Ss			4190	4276	Water/possible gas
Menefee			4276	4910	Coal/Ss/Water/possible gas
Point Lookout Ss			4910	5120	
Mancos Shale			5120	6100	Probable O&G
Gallup			6100	6889	Probable O&G
Greenhorn			6889	6956	
Graneros Shale			6956	6996	Probable O&G
Dakota Ss			6996	PBTD	O&G/water
Morrison					

Remarks:

P & A

- The plugs proposed in the P&A procedure will adequately protect any freshwater sands in this well bore.
- Gallup perms 6078' – 6422'.
- Dakota perms 6998' – 7156'.

Reference Well:

1) **Formation Tops**  
Same

**Prepared by:** Chris Wenman

**UNITED STATES DEPARTMENT OF THE INTERIOR  
BUREAU OF LAND MANAGEMENT  
FARMINGTON DISTRICT OFFICE  
6251 COLLEGE BLVD.  
FARMINGTON, NEW MEXICO 87402**

AFMSS 2 Sundry ID 2695790

Attachment to notice of Intention to Abandon

Well: Canyon Largo Unit 494

**CONDITIONS OF APPROVAL**

1. Plugging operations authorized are subject to the attached "General Requirements for Permanent Abandonment of Wells on Federal and Indian Lease."
2. Farmington Office is to be notified at least 24 hours before the plugging operations commence at (505) 564-7750.

You are also required to place cement excesses per 4.2 and 4.4 of the attached General Requirements.

Office Hours: 7:45 a.m. to 4:30 p.m.

K. Rennick 10/18/2022

**District I**  
1625 N. French Dr., Hobbs, NM 88240  
Phone:(575) 393-6161 Fax:(575) 393-0720  
**District II**  
811 S. First St., Artesia, NM 88210  
Phone:(575) 748-1283 Fax:(575) 748-9720  
**District III**  
1000 Rio Brazos Rd., Aztec, NM 87410  
Phone:(505) 334-6178 Fax:(505) 334-6170  
**District IV**  
1220 S. St Francis Dr., Santa Fe, NM 87505  
Phone:(505) 476-3470 Fax:(505) 476-3462

**State of New Mexico**  
**Energy, Minerals and Natural Resources**  
**Oil Conservation Division**  
**1220 S. St Francis Dr.**  
**Santa Fe, NM 87505**

CONDITIONS  
  
Action 151549

CONDITIONS

Operator: HILCORP ENERGY COMPANY 1111 Travis Street Houston, TX 77002	OGRID: 372171
	Action Number: 151549
	Action Type: [C-103] NOI Plug & Abandon (C-103F)

CONDITIONS

Created By	Condition	Condition Date
kpickford	Notify NMOCD 24 Hours Prior to beginning operations	10/18/2022
kpickford	Adhere to BLM approved COAs and plugs. See BLM COAs and GEO report.	10/18/2022