

Submit a Copy To Appropriate District  
Office  
District I – (575) 393-6161  
1625 N. French Dr., Hobbs, NM 88240  
District II – (575) 748-1283  
811 S. First St., Artesia, NM 88210  
District III – (505) 334-6178  
1000 Rio Brazos Rd., Aztec, NM 87410  
District IV – (505) 476-3460  
1220 S. St. Francis Dr., Santa Fe, NM  
87505

State of New Mexico  
Energy, Minerals and Natural Resources

Form C-103  
Revised July 18, 2013

OIL CONSERVATION DIVISION  
1220 South St. Francis Dr.  
Santa Fe, NM 87505

<b>SUNDRY NOTICES AND REPORTS ON WELLS</b> (DO NOT USE THIS FORM FOR PROPOSALS TO DRILL OR TO DEEPEN OR PLUG BACK TO A DIFFERENT RESERVOIR. USE "APPLICATION FOR PERMIT" (FORM C-101) FOR SUCH PROPOSALS.)		WELL API NO. 30-025-34727
1. Type of Well: Oil Well <input checked="" type="checkbox"/> Gas Well <input type="checkbox"/> Other <input type="checkbox"/>		5. Indicate Type of Lease STATE <input checked="" type="checkbox"/> FEE <input type="checkbox"/>
2. Name of Operator BTA OIL PRODUCERS, LLC		6. State Oil & Gas Lease No.
3. Address of Operator 104 S. PECOS; MIDLAND, TX. 79701		7. Lease Name or Unit Agreement Name GEM, 8705 JV-P
4. Well Location Unit Letter E 2310 feet from the NORTH line and 330 feet from the WSEST line Section 2 Township 20S Range 33E NMPM County LEA		8. Well Number 8
11. Elevation (Show whether DR, RKB, RT, GR, etc.) 3581'		9. OGRID Number 260297
		10. Pool name or Wildcat GEM;YATES, EAST

12. Check Appropriate Box to Indicate Nature of Notice, Report or Other Data

NOTICE OF INTENTION TO:	SUBSEQUENT REPORT OF:
PERFORM REMEDIAL WORK <input checked="" type="checkbox"/>	REMEDIAL WORK <input type="checkbox"/>
TEMPORARILY ABANDON <input type="checkbox"/>	ALTERING CASING <input type="checkbox"/>
PULL OR ALTER CASING <input type="checkbox"/>	COMMENCE DRILLING OPNS. <input type="checkbox"/>
DOWNHOLE COMMINGLE <input type="checkbox"/>	P AND A <input type="checkbox"/>
CLOSED-LOOP SYSTEM <input type="checkbox"/>	CASING/CEMENT JOB <input type="checkbox"/>
OTHER: <input type="checkbox"/>	OTHER: <input type="checkbox"/>

13. Describe proposed or completed operations. (Clearly state all pertinent details, and give pertinent dates, including estimated date of starting any proposed work). SEE RULE 19.15.7.14 NMAC. For Multiple Completions: Attach wellbore diagram of proposed completion or recompletion.

Procedure:

- MIRU pulling unit.
- Unseat pump.
- Pump 60 bbl of hot FW to clean up rods and tubing.
- POH and LD pump, rods and sinker bars (send rod string in for inspection).
- ND WH, release TAC, NU 7-1/16" 5M BOP
- POH scanning out and standing back yellow band 2-7/8" production tubing. LD SN, mud joint and TAC (inspect for replacement).
- PU 5.5" CIBP on tubing. RIH and set CIBP @ 6580'. Tag CIBP to confirm setting depth.
- PU 1 jt. Circulate with FW. Pressure test CIBP to 500 psi for 10min against pipe rams. Spot 35' of Class C cement on top of the CIBP, flush w/ 9.5# salt gel.
- POH to 5309', LD tubing, spot 100' of Class C cmt @ 5309' (cmt plug 50' above and below Delaware top @ 5259'). Flush w/ 9.5# salt gel.
- POH to 3745', LD tubing, spot 100' of Class C cmt @ 3745' (cmt plug 50' above and below DVT @ 3695'). Flush with 2% KCL water and circulate to surface.
- POH standing back 3400' of 2-7/8" production tubing, LD remainder of tubing.
- MIRU WL unit. Correlate all depths to Reeves Compensated Neutron/Photo Density Log dated 1/16/2000.
- PU and RIH w/ CCL/CBL tool. Tag TOC @ 3645' to confirm depth. Log from TOC to 1350'. Report results to office.
- PU and RIH w/ 3-1/8" perforating guns w/ gamma ray loaded w/ 4 spf.

Perf Yates (2nd Sand) 3420' – 3430'.

15. RDMO WL unit.

16. MIRU tubing testers.

17. PU 2-3/8" XN nipple, 6' tbg sub, and AS-1X packer on 2-7/8" N-80 tbg.
18. RIH and hydrotest to 7000 psi.
19. Set packer 40' above perfs (+/- 3380').
20. Pressure test 2-7/8" x 5.5" annulus from pkr to surface to 500 psi.
21. MIUL 330 gal tote of full strength HCR from Acquire. Cut acid to 33% on location.
22. Acidize Yates (2nd Sand) w/ 990 gal of 33% HCR and displace 2 bbl past top perf.
23. Shut in overnight.
24. Perform swab test, report test results to office.
25. Spot 2 frac tanks and fill each with 400 bbl FW (critical that tanks are clean, check with frac for FW compatibility/chemicals). Install BTA owned tbg frac valve.
26. MIRU frac crew.
27. Frac Yates (2nd Sand) as per attached frac design. Displace to top perf.
28. Flow down well. Swab test and report results to the office.
29. POH and LD packer.
30. PU production rod pumping BHA and RIH. Place TAC above perfs and pump intake below new perfs. Run 2 joints for mud anchor.
31. ND BOP, set TAC, NU WH.
32. PU and RIH w/ pump and rods. Load and Test. Hang on well.
33. RDMO pulling unit. Put well on production.

---

I hereby certify that the information above is true and complete to the best of my knowledge and belief.

SIGNATURE: *Katy Reddell*

TITLE: REGULATORY ANALYST

DATE: 3/7/2022

Type or print name: KATY REDDELL E-mail address: [kreddell@btaoil.com](mailto:kreddell@btaoil.com)

PHONE: 432-682-3753 ext. 139

**For State Use Only**

APPROVED BY: *Kerry Fortner*

TITLE Compliance Officer A

DATE 11/1/22

Conditions of Approval (if any):

575-263-6633

BTA Oil Producers

8705 JV-P Gem #8

Program to Recomplete to Yates (2nd Sand) (3420’ – 3430’)

Lea County, NM

TD: 9700’  
PBTD: 9604’

KB Elevation: 3598' (17’ KB)  
GL Elevation: 3581' GL

Surface Casing: @ 1385’ – 13-3/8” 54.5# J-55 (circ to surf w/ 1100 sx cmt)

Intermediate Casing: @ 3263’ – 9-5/8” 40# K-55 (circ to surf w/ 1000 sx cmt)

Production Casing: @ 9,700’ – 5-1/2” 17# J-55 & N-80 (circ 2<sup>nd</sup> stg w/ 2220 sx cmt, DVT @ 3695’)

Perforations:  
Sqz’d – Delaware (6589’ – 6612’)  
Open – Bone Spring (8213’ – 8235’ ; 8320’ – 8331’ ; 9524’ – 9578’)  
Target – Yates (2nd Sand) (3420’ – 3430’)

Production Equipment in Hole:

Tubing:		Rods:		Pump:
286 jts of 2-7/8” 6.5# N-80		6’ – 1” pony		2.5-1.5-24 w/ 5’ plunger
5.5” TAC		79 – 1” D78		
6jts of 2-7/8” 6.5# N-80		99 – 7/8" D78		
SN @ 9262’		179 – 3/4” D78		
6’ perf sub		8 – 1” rods		
1 mud jt., EOT @ 9298’				

Capacities:	
2-7/8” 6.5# Tubing	0.0058 bbl/ft
5.5” 17# Casing	0.0232 bbl/ft
Between tbg and casing	0.0152 bbl/ft

Procedure:


1. MIRU pulling unit.
2. Unseat pump.
3. Pump 60 bbl of hot FW to clean up rods and tubing.
4. POH and LD pump, rods and sinker bars (send rod string in for inspection).
5. ND WH, release TAC, NU 7-1/16" 5M BOP
6. POH scanning out and standing back yellow band 2-7/8" production tubing. LD SN, mud joint and TAC (inspect for replacement).
7. PU 5.5" CIBP on tubing. RIH and set CIBP @ 6580'. Tag CIBP to confirm setting depth.
8. PU 1 jt. Circulate with FW. Pressure test CIBP to 500 psi for 10min against pipe rams. Spot 35' of Class C cement on top of the CIBP, flush w/ 9.5# salt gel.
9. POH to 5309', LD tubing, spot 100' of Class C cmt @ 5309' (cmt plug 50' above and below Delaware top @ 5259'). Flush w/ 9.5# salt gel.
10. POH to 3745', LD tubing, spot 100' of Class C cmt @ 3745' (cmt plug 50' above and below DVT @ 3695'). Flush with 2% KCL water and circulate to surface.
11. POH standing back 3400' of 2-7/8" production tubing, LD remainder of tubing.
12. MIRU WL unit. Correlate all depths to Reeves Compensated Neutron/Photo Density Log dated 1/16/2000.
13. PU and RIH w/ CCL/CBL tool. Tag TOC @ 3645' to confirm depth. Log from TOC to 1350'. Report results to office.
14. PU and RIH w/ 3-1/8" perforating guns w/ gamma ray loaded w/ 4 spf.

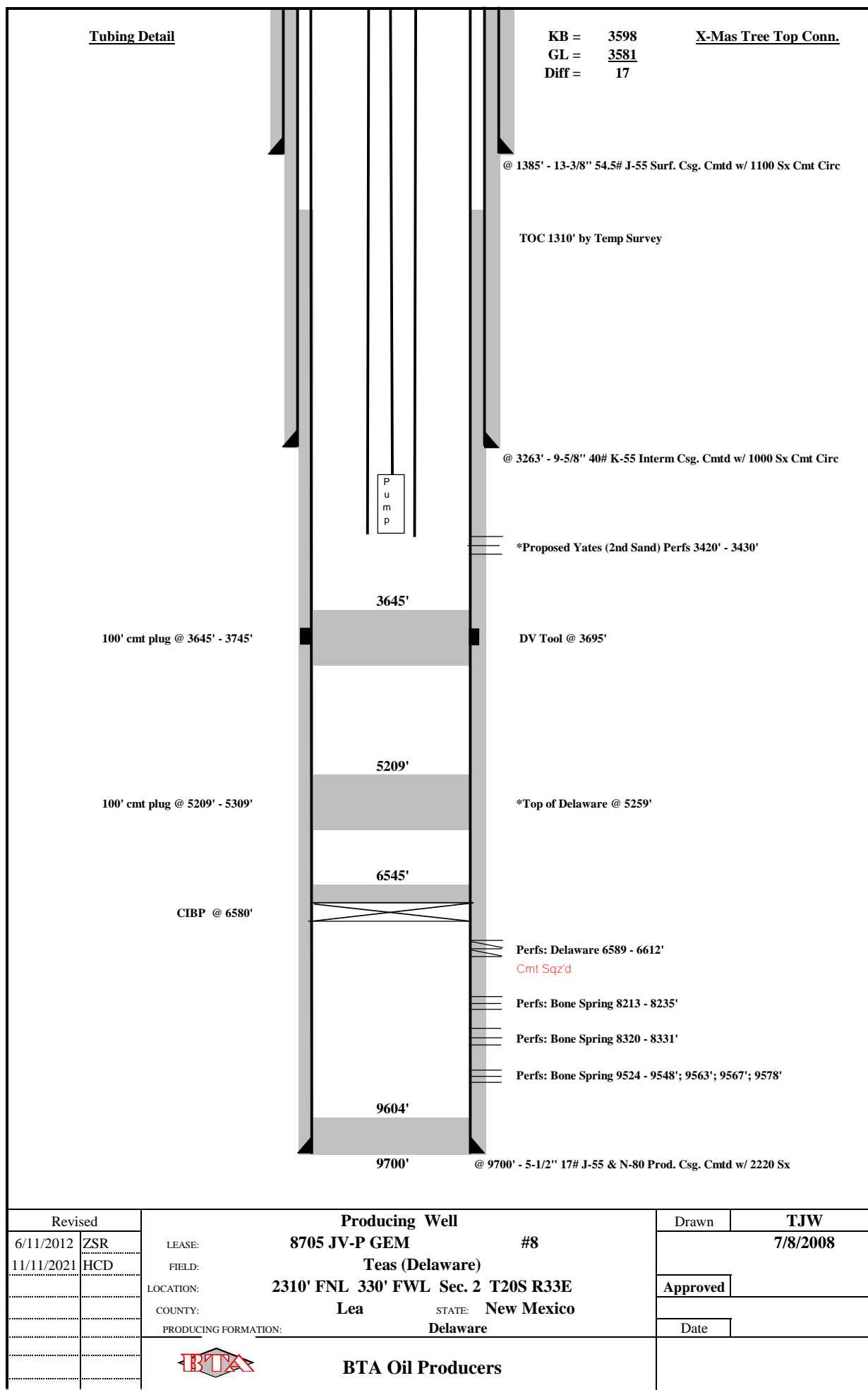
Perf Yates (2nd Sand) 3420' – 3430'.

15. RDMO WL unit.
16. MIRU tubing testers.
17. PU 2.313XN nipple, 6' tbg sub, and AS-1X packer on 2-7/8" N-80 tbg.
18. RIH and hydrotest to 7000 psi.
19. Set packer 40' above perfs (+/- 3380').
20. Pressure test 2-7/8" x 5.5" annulus from pkr to surface to 500 psi.
21. MIUL 330 gal tote of full strength HCR from Acquire. Cut acid to 33% on location.
22. Acidize Yates (2nd Sand) w/ 990 gal of 33% HCR and displace 2 bbl past top perf.
23. Shut in overnight.
24. Perform swab test, report test results to office.
25. Spot 2 frac tanks and fill each with 400 bbl FW (critical that tanks are clean, check with frac for FW compatibility/ chemicals). Install BTA owned tbg frac valve.
26. MIRU frac crew.
27. Frac Yates (2nd Sand) as per attached frac design. Displace to top perf.
28. Flow down well. Swab test and report results to the office.
29. POH and LD packer.
30. PU production rod pumping BHA and RIH. Place TAC above perfs and pump intake below new perfs. Run 2 joints for mud anchor.
31. ND BOP, set TAC, NU WH.
32. PU and RIH w/ pump and rods. Load and Test. Hang on well.
33. RDMO pulling unit. Put well on production.

Estimated Cost: \$305,000

HCD – 11/11/2020

Revised		Producing Well		Drawn	TJW
6/11/2012	ZSR	LEASE:	8705 JV-P GEM #8	7/8/2008	
		FIELD:	Teas (Delaware)	Approved	
		LOCATION:	2310' FNL 330' FWL Sec. 2 T20S R33E	Date	
		COUNTY:	Lea STATE: New Mexico		
		PRODUCING FORMATION:	Delaware		
			BTA Oil Producers		



**District I**  
1625 N. French Dr., Hobbs, NM 88240  
Phone:(575) 393-6161 Fax:(575) 393-0720  
**District II**  
811 S. First St., Artesia, NM 88210  
Phone:(575) 748-1283 Fax:(575) 748-9720  
**District III**  
1000 Rio Brazos Rd., Aztec, NM 87410  
Phone:(505) 334-6178 Fax:(505) 334-6170  
**District IV**  
1220 S. St Francis Dr., Santa Fe, NM 87505  
Phone:(505) 476-3470 Fax:(505) 476-3462

**State of New Mexico**  
**Energy, Minerals and Natural Resources**  
**Oil Conservation Division**  
**1220 S. St Francis Dr.**  
**Santa Fe, NM 87505**

CONDITIONS  
  
Action 87623

CONDITIONS

Operator: BTA OIL PRODUCERS, LLC 104 S Pecos Midland, TX 79701	OGRID: 260297
	Action Number: 87623
	Action Type: [C-103] NOI Workover (C-103G)

CONDITIONS

Created By	Condition	Condition Date
kfortner	None	11/1/2022