

Office
District I - (575) 393-6161
1625 N. French Dr., Hobbs, NM 88240
District II - (575) 748-1283
811 S. First St., Artesia, NM 88210
District III - (505) 334-6178
1000 Rio Brazos Rd., Aztec, NM 87410
District IV - (505) 476-3460
1220 S. St. Francis Dr., Santa Fe, NM 87505

State of New Mexico
Energy, Minerals and Natural Resources

Form C-103
Revised July 18, 2013

OIL CONSERVATION DIVISION
1220 South St. Francis Dr.
Santa Fe, NM 87505

WELL API NO. 30-025-42142
5. Indicate Type of Lease STATE <input checked="" type="checkbox"/> FEE <input type="checkbox"/>
6. State Oil & Gas Lease No. VO-8658-0000
7. Lease Name or Unit Agreement Wool Head 20 State Com
8. Well Number 3
9. OGRID Number 00785
10. Pool name or Wildcat WC-025, G-10, S2133280: Wolfcamp

SUNDRY NOTICES AND REPORTS ON WELLS
(DO NOT USE THIS FORM FOR PROPOSALS TO DRILL OR TO DEEPEN OR PLUG BACK TO A DIFFERENT RESERVOIR. USE "APPLICATION FOR PERMIT" (FORM C-101) FOR SUCH PROPOSALS.)

1. Type of Well: Oil Well ☒ Gas Well ☐ Other ☐

2. Name of Operator
Advance Energy Partners

3. Address of Operator
11490 Westheimer RD, Suite 950 Houston, TX 77077

4. Well Location
Unit Letter M :330 feet from the South line and 330 feet from the West line
Section 20 Township 21S Range 33E NMPM Lea County, NM

11. Elevation (Show whether DR, RKB, RT, GR, etc.)
3739.5

12. Check Appropriate Box to Indicate Nature of Notice, Report or Other Data

NOTICE OF INTENTION TO:

PERFORM REMEDIAL WORK ☐ PLUG AND ABANDON ☐
TEMPORARILY ABANDON ☐ CHANGE PLANS ☐
PULL OR ALTER CASING ☐ MULTIPLE COMPL ☐
DOWNHOLE COMMINGLE ☐
CLOSED-LOOP SYSTEM ☐
OTHER: ☐

SUBSEQUENT REPORT OF:

REMEDIAL WORK ☐ ALTERING CASING ☐
COMMENCE DRILLING OPNS. ☐ P AND A ☒
CASING/CEMENT JOB ☐ PNR

OTHER: Advance Company Rep Notified 1/23/2022
☐

13. Describe proposed or completed operations. (Clearly state all pertinent details, and give pertinent dates, including estimated date of starting any proposed work). SEE RULE 19.15.7.14 NMAC. For Multiple Completions: Attach wellbore diagram of proposed completion or recompletion.

01/24/2022
07:00AM 7PM
MIRU SPOT EQUIPMENT, OFF LOAD 400 JTS 2-7/8" L-80 TBG, DIG AROUND THE WELL HEAD FOUND 9-5/8" VALVE SDON.
01/25/2022
07:00 AM 12:00 PM
DIG AROUND THE WELL HEAD FOUND THE 13-3/4" VALVE.
1200PM 2 PM
ND WELL HEAD NU AND TEST BOPE
3 PM
PREP AND TALLY PIPE, P/U 20 JTS THEN WELL STARTED DISPLACING OIL, RACK BACK 20 JTS SDON.
01/26/2022
PU RIH W/ 282 JTS (ICE ON THE PIPE HAD TO CLEAN OUT SLIPS EVERY 5 CONNECTIONS THE FIRST 120 JTS).
01/27/2022
CONT. PU RIH W/ TBG, TAGGED TOP OF CIBP AT 12150', RU PUMP, PUMPED 450 BBLS OF 9.8 MUD, MIX AND PUMP 70 SXS OF CLASS H 16.4 # CEMENT, DISPLACED WITH 68 BBLS OF MUD, PULLED TBG TO 11229' REVERSE CIRCULATE CLEAN, SDON
01/28/2022
RIH W/ TBG TAGGED TOC AT 11868', LD 51 JTS TAIL AT 10550' MIX AND PUMP 60 SXS CLASS H 16.4 # CEMENT DISPLACED WITH 59 BBLS OF MUD, LD 19 JTS TAIL AT 9960' MIX AND PUMP 60 SXS CLASS H 16.4# CEMENT DISPLACED WITH 59 BBLS OF MUD.
LD 34 JTS TAIL AT 8872', MIX AND PUMP 60 SXS CLASS H 16.4 # CEMENT DISPLACED WITH 49 BBLS OF MUD, PULLED TAIL TO 7982', REVERSE CIRC CLEAN, SD TILL MONDAY
01/31/2022
HSM RIH W/ TBG TAGGED TOC AT 8585', LD 55 JTS TAIL AT 7000' MIX AND PUMP 40 SXS CLASS C 15# CEMENT DISPLACED WITH 39 BBLS OF MUD, PULLED TAIL TO 6100', REV CIRC CLEAN WAIT 4 HRS.

See page #2

Spud Date:

I hereby certify that the information above is true and complete to the best of my knowledge and belief.

SIGNATURE Jeffery Buford TITLE Manager DATE 02/25/2022
642A4792E6AD4EF...

Type or print name Jeffery Buford E-mail address: Jeffery.buford@axisofs.com PHONE: (903)590-9717

For State Use Only

APPROVED BY: Kerry Fortner TITLE Compliance Officer A DATE 10/31/22
Conditions of Approval (if any):

02/01/2022

HSM LD EXTRA TBG, RACK BACK 5268', MU 7" AD1 PKR RIH W/ TBG SET AT 4707', RU WL RIH MISS FIRE ON THE FIRST RUN SECOND RUN PERFORATE 4 SQUEEZE HOLES AT 5268, RD WL, INJ RATE PRESSURE UP TO 1000 PSI BLED OFF TO 800 IN FIVE MINUTES, DAN WANT IT TO PERFORATE AGAIN WITH BIGGER GUN, SDON

02/02/2022

HSM, RU WL RIH PERFORATE 4 SQUEEZE HOLES AT 5268' RD WIRE LINE, INJECTION RATE PRESSURE UP TO 1000 PSI BLED OFF TO 800 PSI IN FIVE MINUTES

KERRY WITH NMOCD OK TO LOWER TUBING TAIL 50' BELOW PERFORATIONS AND SPOT 60 SXS

RELEASED PKR, POOH / W/ TBG, LD PKR, RIH W/ TBG TO 5320'. MIXAND PUMP 60 SXS CLASS C CEMENT DISPLACED WITH 28 BBLS OF MUD, PULLED TBG TO 4368' REVERSE CIRCULAATE CLEAN. SDON.

02/03/2022

SD DUE TO BAD WEATHER.

02/04/2022

SD DUE TO BAD WEATHER.

02/07/2022

HSM RIH W/ TBG TAGGED TOC AT 5013', LD 44 JTS RU WIRE LINE PERFORATE 4 SQUEEZE HOLES AT 3000' RD WIRE LINE, INJECTION RATE PRESSURE UP TO 1000 PSI HELD GOOD.

KERRY WITH NMOCD OK TO LOWER TBG TAIL 50' BELOW PERFORATIONS AND SPOT 40 SXS.

RIH W/ TBG TO 3050' SPOT 40 SXS CLASS C 15# CMT DISPLACED WITH 16 BBLS OF MUD, PULLED TAIL TO 1558' WAIT 4 HRS.

RU WL RIH TAGGED TOC AT 2818', PERFORATE 4 SQUEEZE HOLES AT 1678', RD WIRE LINE

INJECTION RATE PRESSURE UP TO 1000 PSI HELD GOOD,

KERRY WITH NMOCD OK TO SPOT. 40 SXS.

LOWERED TBG TAIL TO 1748' MIX AND PUMPED 40 SXS CLASS C 15# CEMENT, DISPLACED WITH 8.5 BBLS OF MUD

LD 34 JTS RACK BACK 6 TO 479' SDON

02/08/2022

HSM RU WL RIH TAGGED TOC AT 1490', PERFORATE 4 SQUEEZE HOLES AT 650' RD WL, INJECTION RATE 3 BPM 50 PSI, MU 7" AD1 PKR RIH W/ 10 JTS SET AT 320', MIX AND PUMP 70 SXS CLASS C 15# CMT, DISPLACED WITH 8.5 BBLS OF MUD, 5.65 BBLS IN 10.8 BBLS OUT WAIT 4 HRS. RELEASED PKR LD 10 JTS AND PKR SDON.

02/09/2022

HSM RU WL TAGGED TOC AT 450', PERFORATE 4 DPCH HOLES AT 150', RD WL,

INJECTION RATE 3 BPM OUT OF THE 9-5/8", 13-3/4" PRESSURE UP TO 600 PSI BLED OFF TO 400 IN 5 MINUTES. KERRY WITH NMOCD OK TO PUMP TO SURFACE.

MIX AND PUMP 70 SXS CLASS C 15# CEMENT TO SURFACE ON THE 7" AND 9-5/8", ND BOPE, RDMO

PREP FOR RIG MOVE, DUG AROUND THE WELL HEAD READY TO CUT. SDON

02/10/2022

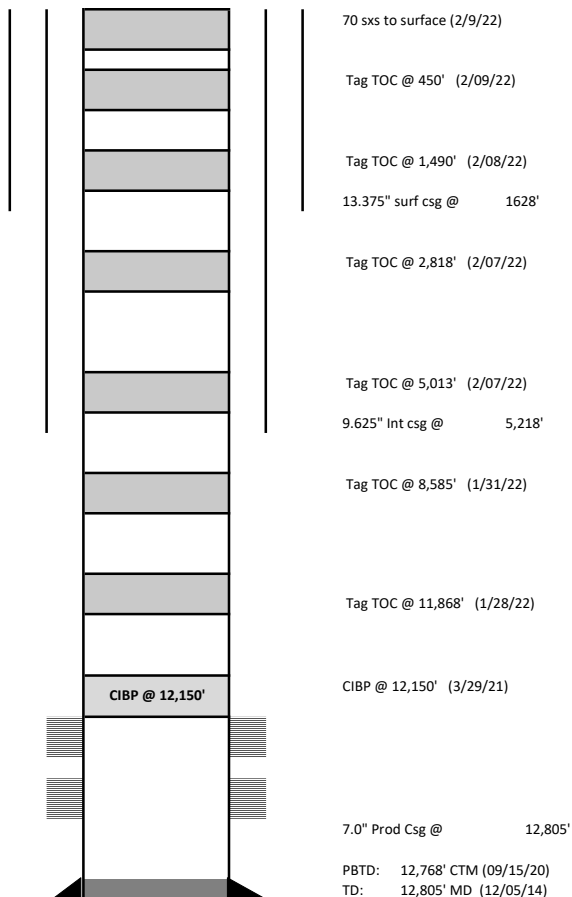
HSM FILLED OUT REQUIRED PERMITS, CUT OFF WELL HEAD, WELD ON MARKER, LOAD OUT ALL EQUIPMENT.



CURRENT
2/10/2022

SPUD: 10/23/2014

GL 3,739.50



WELL NAME:	Wool Head 20 State 003	Engineer:	Boone Bajgier
COUNTY:	Lea	Prepared by:	Eileen M Kosakowski
STATE:	NM	Date:	11/18/2021
API NO:	30-025-42142	Lat	32.4580102
		Long	-103.6021077

CASING RECORD									
CASING TYPE	Size	Weight	Grade	Connection	MD	TVD	Sacks	Class	TOC
Surface Casing	13.375	54.50#	J-55		1628'		1400	C	0
Intermediate Csg	9.625	40.0#	P-110		5,218'		3645	C	0
Production Casing	7.000	29.0#	HCP-110	GBCD	12,805'		1330	H	0

District I
1625 N. French Dr., Hobbs, NM 88240
Phone:(575) 393-6161 Fax:(575) 393-0720
District II
811 S. First St., Artesia, NM 88210
Phone:(575) 748-1283 Fax:(575) 748-9720
District III
1000 Rio Brazos Rd., Aztec, NM 87410
Phone:(505) 334-6178 Fax:(505) 334-6170
District IV
1220 S. St Francis Dr., Santa Fe, NM 87505
Phone:(505) 476-3470 Fax:(505) 476-3462

State of New Mexico
Energy, Minerals and Natural Resources
Oil Conservation Division
1220 S. St Francis Dr.
Santa Fe, NM 87505

COMMENTS

Action 81525

COMMENTS

Operator: ADVANCE ENERGY PARTNERS HAT MESA, LLC 11490 Westheimer Rd., Ste 950 Houston, TX 77077	OGRID: 372417
	Action Number: 81525
	Action Type: [C-103] Sub. Plugging (C-103P)

COMMENTS

Created By	Comment	Comment Date
plmartinez	DATA ENTRY PM	11/1/2022

District I
1625 N. French Dr., Hobbs, NM 88240
Phone:(575) 393-6161 Fax:(575) 393-0720
District II
811 S. First St., Artesia, NM 88210
Phone:(575) 748-1283 Fax:(575) 748-9720
District III
1000 Rio Brazos Rd., Aztec, NM 87410
Phone:(505) 334-6178 Fax:(505) 334-6170
District IV
1220 S. St Francis Dr., Santa Fe, NM 87505
Phone:(505) 476-3470 Fax:(505) 476-3462

State of New Mexico
Energy, Minerals and Natural Resources
Oil Conservation Division
1220 S. St Francis Dr.
Santa Fe, NM 87505

CONDITIONS

Action 81525

CONDITIONS

Operator: ADVANCE ENERGY PARTNERS HAT MESA, LLC 11490 Westheimer Rd., Ste 950 Houston, TX 77077	OGRID: 372417
	Action Number: 81525
	Action Type: [C-103] Sub. Plugging (C-103P)

CONDITIONS

Created By	Condition	Condition Date
kfortner	Need C103Q and marker photos to release	10/31/2022