

Well Name: LING FEDERAL	Well Location: T19S / R34E / SEC 31 / SWNW /	County or Parish/State: LEA / NM
Well Number: 6	Type of Well: OIL WELL	Allottee or Tribe Name:
Lease Number: NMNM14496	Unit or CA Name:	Unit or CA Number:
US Well Number: 300253912200S1	Well Status: Temporarily Abandoned	Operator: FASKEN OIL & RANCH LIMITED

Subsequent Report

Sundry ID: 2654658

Type of Submission: Subsequent Report

Date Sundry Submitted: 04/27/2022

Date Operation Actually Began: 09/22/2021

Type of Action: Recompletion

Time Sundry Submitted: 03:08

Actual Procedure: The well was recompleted in two stages: 9/23/2021 – Perforated 9356’-9361’, 9376’-9401’ and acidized with 5940 gal of 7.5% HCl 11/4/2021 – Lowered CIBP to 9455’ and covered with 1 sk of class “H” cement, perforated 9430’-9440’, and frac’d the interval from 9356’-9440’ with 2056 gal 7.5% HCl, 183,876 gal of 15# linear gel, and 47,460 lbs of 40/70 white, and 48,700 lbs 40/70 THS.

SR Attachments

- Actual Procedure
- Ling_Federal__6_drilling_report_20220427150715.pdf

LingFederal6.WBD.2022_20220128123633.pdf

Well Name: LING FEDERAL	Well Location: T19S / R34E / SEC 31 / SWNW /	County or Parish/State: LEA / NM
Well Number: 6	Type of Well: OIL WELL	Allottee or Tribe Name:
Lease Number: NMNM14496	Unit or CA Name:	Unit or CA Number:
US Well Number: 300253912200S1	Well Status: Temporarily Abandoned	Operator: FASKEN OIL & RANCH LIMITED

Operator

I certify that the foregoing is true and correct. Title 18 U.S.C. Section 1001 and Title 43 U.S.C. Section 1212, make it a crime for any person knowingly and willfully to make to any department or agency of the United States any false, fictitious or fraudulent statements or representations as to any matter within its jurisdiction. Electronic submission of Sundry Notices through this system satisfies regulations requiring a

Operator Electronic Signature: VIOLA VASQUEZ

Signed on: APR 27, 2022 03:07 PM

Name: FASKEN OIL & RANCH LIMITED

Title: Regulatory Analyst

Street Address: 6101 HOLIDAY HILL ROAD

City: MIDLANDState: TX

Phone: (432) 687-1777

Email address: VIOLAV@FORL.COM

Field

Representative Name:

Street Address:

City:State:Zip:

Phone:

Email address:

BLM Point of Contact

BLM POC Name: Jonathon W Shepard

BLM POC Title: Petroleum Engineer

BLM POC Phone: 5752345972

BLM POC Email Address: jshepard@blm.gov

Disposition: Accepted

Disposition Date: 06/03/2022

Signature: Jonathon Shepard

Sep 22, 2021 Wednesday Day 6

SICP- 0 psi, SITP- 400 psi. RU flowback hose to gas buster and pressure bled straight off w/ no flow. Mesquite Oil Tools tech released 5-1/2" HD packer and POW w/ 293 joints 2-3/8" N80 YB tubing and LD packer. RU The WL group w/ lubricator and RIW w/ CCL/5' perforating gun and correlated to Enertech GR/CCL log dated 1/16/2009, verified depth w/ marker joint from 9151' - 9163', checked collar at 9245' FS and perforated from 9356' - 9361', 2 jspfs, 5', 10 holes. POW and RDWL. RIW w/ Mesquite Oil Tools 5-1/2" HD packer, 2-3/8" seating nipple and 293 joints 2-3/8" N80 YB tubing to 9245' FS and Mesquite tech set 5-1/2" HD packer at 9245' FS. RU swab, made 4 swab runs, IFL- surface, EFL- 2700', TLR- 11 bbls, TLTR- 51 bbls, LLTR- 40 bbls. Secured well and SDON. (MB)

Sep 23, 2021 Thursday Day 7

SICP-0 psi, SITP-slight vacuum. RU Petro-Plex Acidizing, DXP shower trailer and held safety meeting. Pressured casing to 500 psi, put transducer on to monitor and tested lines to 5600 psi. Opened well and pumped 12 bbls of 2% KCL, established injection rate of 3 bpm @3000 psi and started acid and 1.3 sg ball sealers, with 69.9 bbls 7.5% NEFE HCL acid pumped w/ 34 bbls of acid on formation w/ 60- 1.3 sg ball sealers and pump tripped out at max pressure and lost all air to throttle on acid pump. Observed good ball action to this point, ATR - 4.2 bpm, ATP - 4000 psi, acid treater was able to get throttle working on acid pump after 45" of down time and flushed well w/ 40 bbls 2% kcl, 3 bpm @ 3200 psi. Notified Midland office, decision made to reload 2500 gals 7.5% NEFE HCL acid and 150 1.3 sg ball sealers and redo acid job. RD acid pump while waiting for acid and new acid pump. RU new acid pump and primed and tested pump. Opened well w/ 1200 psi, established injection rate @3 bpm, 3420 psi and pumped 2500 gals 7.5% NEFE DI HCL acid while dropping 150- 1.3 sg ball sealers, observed no ball action, steady increase in pressure w/ each set of ball sealers hitting formation when pump tripped out w/ 120 ball sealers on formation @4025 psi and lost all balls off perforation, finished flushing acid @4 bpm w/ 3885 psi. Flushed well to bottom perforation @9401' FS, MTR-3 bpm, ATR-4.2 bpm, MTP-3420 psi, ATP-3885 psi, ISIP-2191 psi, 5"-2019 psi, 10"-1967 psi, 15"-1926 psi, TLTR - 220 bbls and SWI for 1 hour. RD acid equipment and shower trailer. RU choke on tubing and opened well w/ 1200 psi on 18/64" choke, well flowed

Oct 29, 2021 Friday Day 4

SICP-vacuum. RU The Wireline Group WL truck and RIW w/ 5-1/2" 12K CIBP, get on depth w/ Enertech GR/CCL log dated 1/16/2009, checked marker joint @ 9151' - 9163', RIW w/ WL, checked collars @ 9432' & 9391' and set CIBP @ 9455' FS. POW and LD setting tool. Mixed 1 sack of "H" neat cement, filled dump bailer w/ cement and RIW w/ dump bailer to 9455' FS and dump bailed 1 sack "H" neat cement on top of CIBP. POW and RDWL. RIW w/ Mesquite Oil Tools 5-1/2" HD packer, 2-3/8" seating nipple and 298 joints 2-3/8" N80 YB tubing to 9419' FS, Mesquite tech set packer @ 9415' FS, RU Stone 10K pump truck on tubing, pumped 60 bfw w/ 2% kcl observed no pressure and well on vacuum. Packer could have been set in bottom perforation on upper perforations, 13' difference in WL measurements and tubing tally. Tech released packer, RIW to 9451' FS, set packer @ 9446' FS, RU pump truck, loaded well w/ 20 bfw w/ 2% kcl, FL @ 5167' FS, tested CIBP to 6100 psi for 10" w/ no pressure loss and bled off pressure. 55 well service spotted in LD machine, TWS forklift spotted in pipe racks, Mesquite tech released packer. POW LD 125 joints 2-3/8" N80 YB tubing to 5505' FS. Secured well and SDON. (MB)

Nov1, 2021 Monday Day 7

SITP-100 psi, SICP-100 psi. Finished POW and LD remaining 173 jts 2 3/8" EUE 8rd N80 YB tubing and LD packer. Removed tubing from pipe racks and set on edge of location. RU TWG, made new rope socket on WL, RIW w/ dump bailer and correlated to Energetech Gamma ray/cc1 log dated 1-16-2009. Made 3 runs w/ dump bailer to spot 40 gal 7.5% NEFE HCL acid across perf interval 9430' - 9440'. RU 3k full lubricator, RIW w/ 3-1/8" perf gun, correlated to Energetech Gamma ray/cc1 log dated 1-16-2009 and shot 20 holes, 2 jsp, 120 degree phased w/ .42" EH +/- 32" penetration from 9430' - 9440'. Casing showed little vacuum and then little blow after shots fired. POW w/ gun, all shots fired and RDWL. Received and unloaded +/- 10,000' 3-1/2" ph6 12.95# P-110 and handling tools from Knight rentals. Removed protectors, cleaned threads w/ varsol and tallied 160 jts tubing on racks and installed clean protectors on one end. RU Hydrostatic TT, PU 5-1/2" AS-1X packer w/ frac hardened mandrel and top sub and tested 19 jts 3-1/2" ph6 to 10,000 psi above slips. SWI and SDON. (VH)

Nov2, 2021 Tuesday Day 8

SITP-50 psi, SICP-50 psi. Continued RIW w/ packer and 3-1/2" PH6 12.95# P-110 tubing while testing above slips to 10,000 psi and have tested a total of 275 jts w/ no failures and left packer swinging @ 8544'. SWI and SDON. (VH)

Nov3, 2021 Wednesday Day 9

SICP-50 psi, SITP-50 psi. Bled down gas off well. Finished RIW w/ a total of 299 joints 3-1/2" PH6, 5-1/2" AS-1X packer and x-overs to 9284' FS while testing to 10K above slips w/ no failures and RDTT. Waited on 3-1/2" N80 8rd tubing sub and Jet Specialties delivered 3-1/2" x 6' N80 tubing sub w/ 2 3-1/2" collars. Set 5-1/2" AS-1X packer @ 9284' FS. ND BOP, installed 7-1/16" hanger, set hanger in WH w/ 24K compression on packer and observed threads galled in hanger and 3-1/2" tubing sub when sub was screwed out of hanger. NU frac tree and tested hanger and tubing seal to 5200 psi for 10" w/ no pressure loss. RU Stone Oilfield pump truck on casing, loaded annulus w/ 99 bfw w/ 2% kcl, FL 8760' FS and tested annulus to 500 psi for 5" w/ no pressure loss, trapped pressure on annulus and RD pump truck. RDPU, moved rig to Ling Federal #5 and SDON. (MB)

Moved Cudd equipment in and rigged up. SDON. (RR/LSH)

Nov4, 2021 Thursday Day 10

Crew changed out top flange on frac tree, crew working on PU and waiting on frac job. Cudd Energy fracked well, crew changed out top flange for flowback crew and SDON. (MB)

Finished MIRU Cudd frac spread. Frac'd well with 4378 bbl 12# linear gel, 47,460 lbs 40/70 white and 48,700 lbs 40/70 THS. Average TP- 8500 psi, average rate 25 BPM. Stage Detail: SICP- 20 psi. Started DH @ 12:20 MDT. SD @ 15:30 MDT. Pressure trend flat throughout the stage. Measured variance from the design was -276 bbls and -3849 lbs. Cudd measured 91,123 lbs with the screws. 40/70 White was pumped 26% short, 40/70 THS was pumped 2% long. RD Cudd frac spread.

SITP- 1765 psi. Opened well to flow back manifold on 12/64" choke at 5:00 pm CDT and flowed back as follows:

Time	CK	Psi	BOPH	BWPH	Total	Wtr	Remarks
5:00pm	12/64	1765	0	0	0		Opened well to manifold, SITP- 1765 psi.
6:00pm	13/64	950	0	26	26		
9:00pm	3/4"	10	0	33	125		
12:00am	3/4"	0	0	0	125		

Well died 5 hours and no fluid recovered after 9:00pm MST.

TLR- 125 bbls; LLTR- 4253 bbls, 2.8 % load recovered. (RRR/LSH)

WBD as of 1/26/2022

Well: **Ling Federal No. 6**
 Operator: **Fasken Oil and Ranch, Ltd.**
 Location: **2130' FNL and 660' FWL**
Sec 31, T19S, R34E
Lea County, NM

Spud: 11/24/2008
 API #: 30-025-39122
 TD: 9766'
 PBTD: 9415'
 Casing: **13-3/8" 48# H40, 54.5# J-55 csg set @ 1617.16' KB**
 1000 sx Class "C" cement (13.5 ppg, 1.74 ft³/sx)
 + 400 sx "C" (14.8 ppg, yield 1.32 ft³/sx)
 TOC surf, circ 450 sx
8-5/8" 32# J-55 csg set @ 5084.57' KB, DV tool @ 3305.32'
 1st stg 650 sx HLC (12.6 ppg, yield 2.01 ft³/sx)
 + 350 sx "C" (14.8 ppg, yield 1.32 ft³/sx), did not circ cmt
 2nd stg 1375 sx HLC (12.6 ppg, yield 2.04 ft³/sx)
 + 300 sx "C" (14.8 ppg, yield 1.32 ft³/sx), circ 27 sx to surf
5-1/2" 17# N-80 csg set @ 9759.33' KB, DV tool @ 8318.55'
 1st stg 250 sx Super "H" Mod (13.2 ppg, yield 1.60 ft³/sx), circ 55 sx cmt
 2nd stg 500 sx Hal Lite "H" (12.6 ppg, yield 1.93 ft³/sx)
 + 200 sx "H" (15.6 ppg, yield 1.18 ft³/sx)
 TOC @ 3680' per temp survey

DV Tool: 8318.55'
 TOC: 3680' per temp survey
 Hole Sizes: 17-1/2" Surf-1615'
 12-1/4" 1615'-5090'
 7-7/8" 5090'-9766'

Perforations:

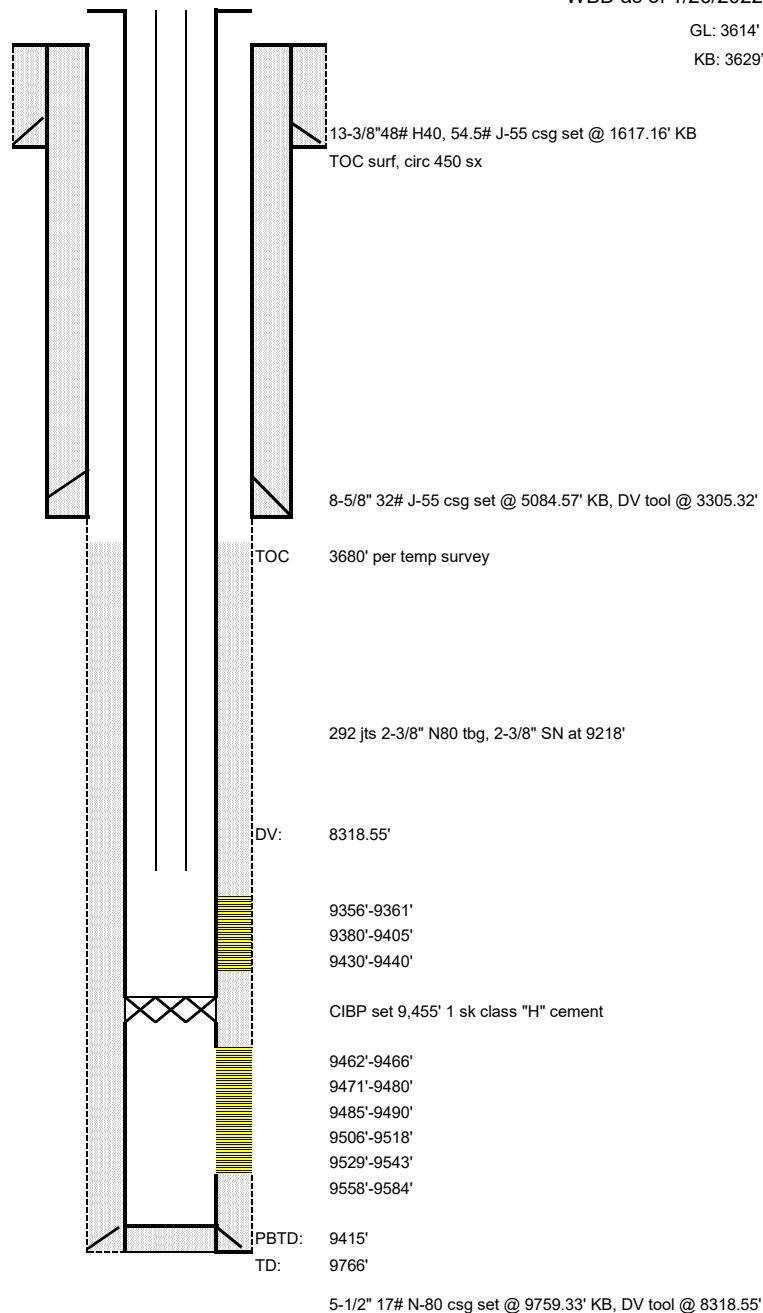
Plugged Back	9462'-9466'	1 jspf, 5 holes
Plugged Back	9471'-9480'	1 jspf, 10 holes
Plugged Back	9485'-9490'	1 jspf, 6 holes
Plugged Back	9506'-9518'	1 jspf, 13 holes
Plugged Back	9529'-9543'	1 jspf, 15 holes
Plugged Back	9558'-9584'	1 jspf, 27 holes
1st Bone Springs	9356'-9361'	2 jspf, 10 holes
1st Bone Springs	9376'-9401'	2 jspf, 50 holes
1st Bone Springs	9430'-9440'	2 jspf, 20 holes

TUBING

1 jt 2-7/8" EUE 8rd N80 tubing w/ bp (condition B)	32.63'
2 jts 2-7/8" EUE 8rd N80 tubing	65.18'
2-3/8" Cavins Desander (MB 342703-GF)(exchanged)	17.90'
2-3/8" WFT mech SN w/ NO strainer (new)	0.78'
2 jts 2-3/8" EUE 8rd N80 IPC tubing (reran)	64.39'
2-3/8" x 5-1/2" Don nan "Tec Tac" TAC Slim body (30K exchanged)	3.28'
291 jts 2-3/8" EUE 8rd L80 tubing (YB)	9190.42'
Sub Total	9374.58'
Below KB	18.00'
Total	9392.58'

RODS

2" x 1-1/2" x 24' American RHBM WFT pump .005" AP-1093	24.00'
3/4" On/Off tool (new)	1.18'
12 1-1/2" Flexbar Grade "C" K-bars w/ SHSM cplgs (reran)	300.00'
229 3/4" (N90) steel rods w/ FHSM cplgs (reran)	5725.00'
128 7/8" (N90) steel rods w/ SHSM cplgs (reran)	3200.00'
7/8" x 8', 6', 4', 2' (N90) steel subs w/ SHSM cplgs (reran)	20.00'
1-1/2" x 26' PR w/ 20' SM w/ HT PR cplg (reran PR new HT PR cplg)	+ 26.00'
Total	9296.18'



District I
1625 N. French Dr., Hobbs, NM 88240
Phone:(575) 393-6161 Fax:(575) 393-0720
District II
811 S. First St., Artesia, NM 88210
Phone:(575) 748-1283 Fax:(575) 748-9720
District III
1000 Rio Brazos Rd., Aztec, NM 87410
Phone:(505) 334-6178 Fax:(505) 334-6170
District IV
1220 S. St Francis Dr., Santa Fe, NM 87505
Phone:(505) 476-3470 Fax:(505) 476-3462

State of New Mexico
Energy, Minerals and Natural Resources
Oil Conservation Division
1220 S. St Francis Dr.
Santa Fe, NM 87505

COMMENTS

Action 113736

COMMENTS

Operator: FASKEN OIL & RANCH LTD 6101 Holiday Hill Rd Midland, TX 79707	OGRID: 151416
	Action Number: 113736
	Action Type: [C-103] Sub. (Re)Completion Sundry (C-103T)

COMMENTS

Created By	Comment	Comment Date
dmcclure	Work approved under Action ID: 161719	11/28/2022

District I
1625 N. French Dr., Hobbs, NM 88240
Phone:(575) 393-6161 Fax:(575) 393-0720
District II
811 S. First St., Artesia, NM 88210
Phone:(575) 748-1283 Fax:(575) 748-9720
District III
1000 Rio Brazos Rd., Aztec, NM 87410
Phone:(505) 334-6178 Fax:(505) 334-6170
District IV
1220 S. St Francis Dr., Santa Fe, NM 87505
Phone:(505) 476-3470 Fax:(505) 476-3462

State of New Mexico
Energy, Minerals and Natural Resources
Oil Conservation Division
1220 S. St Francis Dr.
Santa Fe, NM 87505

CONDITIONS

Action 113736

CONDITIONS

Operator: FASKEN OIL & RANCH LTD 6101 Holiday Hill Rd Midland, TX 79707	OGRID: 151416
	Action Number: 113736
	Action Type: [C-103] Sub. (Re)Completion Sundry (C-103T)

CONDITIONS

Created By	Condition	Condition Date
dmcclure	None	11/28/2022