

Well Name: CORBIN 13 FED A	Well Location: T18S / R32E / SEC 13 / NESE /	County or Parish/State: LEA / NM
Well Number: 01	Type of Well: OIL WELL	Allottee or Tribe Name:
Lease Number: NMNM53239	Unit or CA Name:	Unit or CA Number:
US Well Number: 3002531698	Well Status: Abandoned	Operator: COG OPERATING LLC

Accepted for record – NMOCD gc 12/1/2022

Subsequent Report

Sundry ID: 2644757

Type of Submission: Subsequent Report	Type of Action: Plug and Abandonment
Date Sundry Submitted: 11/17/2021	Time Sundry Submitted: 01:33
Date Operation Actually Began: 10/14/2021	

Actual Procedure: 10/14/21MIRU plugging equipment. ND pump jack head. 10/15/21POH w/ rods. Dug out cellar, NU BOP. 10/18/21POH w/ 50 stands of tbg & rods. Tagged existing 5 1/2" CIBP w/ 35' cmt on top @ 4975'. 10/19/21 Set 5 1/2" CIBP @ 4860'. Circ'd hole w/ 120 bbls MLF. Pressure tested csg, held 500 PSI. Spotted 60 sx class C cmt w/ 2% CACL @ 4860-4267', WOC. Tagged plug @ 4276'. 10/20/21Perfd csg @ 2720'. Sqz'd 60 sx class C cmt w/ 2% CACL @2470'. WOC. Pressure tested csg, held 500 PSI. Tagged plug @ 2444'. Perfd (S> 1630'. Sqz'd 50 sx class C cmt @ 1630-1430'. WOC. 10/21/21Tagged plug @ 1320'. Perfd @ 518'. ND BOP, NU flange. Sqz'd 155 sx class C cmt @ 518' & circulated to surface. Pump'd 10 sx down 13 3/8" csg to surface. Rigged down & moved off. 10/26/21Moved in backhoe and welder. Cut off well head & anchors. Mila Hackford w/ BLM verified cmt @ surface via picture text message. Welded on "Below Ground Dry Hole Marker". Backfilled cellar, cut off deadmen, cleaned location, and moved off.

SR Attachments

- Actual Procedure
- Corbin_13_Fed_1_DHM_20211117133302.pdf
 - Corbin_13A_Fed_1H_Plugging_Report_20211117133254.pdf

Well Name: CORBIN 13 FED A	Well Location: T18S / R32E / SEC 13 / NESE /	County or Parish/State: LEA / NM
Well Number: 01	Type of Well: OIL WELL	Allottee or Tribe Name:
Lease Number: NMNM53239	Unit or CA Name:	Unit or CA Number:
US Well Number: 3002531698	Well Status: Abandoned	Operator: COG OPERATING LLC

Operator Certification

I certify that the foregoing is true and correct. Title 18 U.S.C. Section 1001 and Title 43 U.S.C. Section 1212, make it a crime for any person knowingly and willfully to make to any department or agency of the United States any false, fictitious or fraudulent statements or representations as to any matter within its jurisdiction. Electronic submission of Sundry Notices through this system satisfies regulations requiring a submission of Form 3160-5 or a Sundry Notice.

Operator Electronic Signature: RUTH SHOCKENCY	Signed on: NOV 17, 2021 01:33 PM
Name: COG OPERATING LLC	
Title: Regulatory Analyst	
Street Address: 600 W. ILLINOIS AVE.	
City: MIDLAND	State: TX
Phone: (575) 703-8321	
Email address: RUTH.SHOCKENCY@CONOCOPHILLIPS.COM	

Field Representative

Representative Name:		
Street Address:		
City:	State:	Zip:
Phone:		
Email address:		

BLM Point of Contact

BLM POC Name: JAMES A AMOS	BLM POC Title: Acting Assistant Field Manager
BLM POC Phone: 5752345927	BLM POC Email Address: jamos@blm.gov
Disposition: Accepted	Disposition Date: 12/22/2021
Signature: James A. Amos	

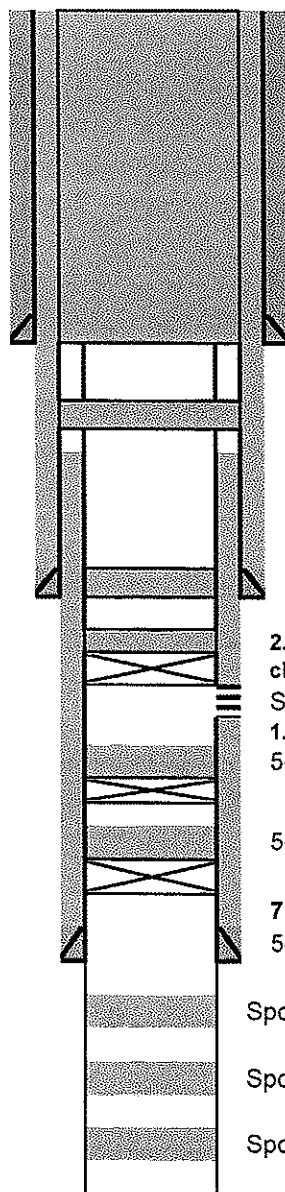
**Plug Abandonment
Subsequent Report**

OPERATOR NAME:	COG Operating LLC
LEASE NO.:	NMNM 53239
WELL NAME & NO.:	Corbin "13" A Federal #1
US WELL NUMBER:	30-025-31698
LOCATION:	Sec 13, T18S, R32E
COUNTY:	Lea, New Mexico

10/14/21 MIRU plugging equipment. ND pump jack head. 10/15/21 POH w/ rods. Dug out cellar, NU BOP. 10/18/21 POH w/ 50 stands of tbgs & rods. Tagged existing 5 1/2" CIBP w/ 35' cmt on top @ 4975'. 10/19/21 Set 5 1/2" CIBP @ 4860'. Circ'd hole w/ 120 bbls MLF. Pressure tested csg, held 500 PSI. Spotted 60 sx class C cmt w/ 2% CACL @ 4860-4267'. WOC. Tagged plug @ 4276'. 10/20/21 Perf'd csg @ 2720'. Sqz'd 60 sx class C cmt w/ 2% CACL @ 2470'. WOC. Pressure tested csg, held 500 PSI. Tagged plug @ 2444'. Perf'd @ 1630'. Sqz'd 50 sx class C cmt @ 1630-1430'. WOC. 10/21/21 Tagged plug @ 1320'. Perf'd @ 518'. ND BOP, NU flange. Sqz'd 155 sx class C cmt @ 518' & circulated to surface. Pump'd 10 sx down 13 3/8" csg to surface. Rigged down & moved off. 10/26/21 Moved in backhoe and welder. Cut off well head & anchors. Mila Hackford w/ BLM verified cmt @ surface via picture text message. Welded on "Below Ground Dry Hole Marker". Backfilled cellar, cut off deadmen, cleaned location, and moved off.

COG Operating		PLUGGED	
Author:	Abby w/ BCM	API #	30-025-31698
Well Name	Corbin 13 A Fed #1	Legal	1830' FSL & 660' FEL
Formation	Delaware		Sec 13 T18S R32E
County	Lea		
State	New Mexico		
Spud Date	2/24/1993		
GL	3,837.4'		

Description	O.D.	Hole	Grade	Weight	Depth	Cmt Sx	TOC
Surface Csg	13.375"	17.5"	J-55	54.5	468'	475	surface
Inter Csg	8.625"	12.25"	J-55	32	4,473'	2,049	surface
Prod Csg	5.5"	7.875"	K-55	15.5	7,250'	950	3,050'
Liner							



Formation Tops	
Rustler	1301
T/Salt	1580
B/Salt	2620
Yates	2670
Queen	4020
Grbg	4634
Lovington	4944
Delaware	5898
Bone Springs	6846
Wolfcamp	10260
Penn	11304

17-1/2" Hole

13-3/8" (54.5#) @ 468' w/ 475 sx

5. Perf'd @ 518'. ND BOP, NU flange. Sqz'd 155 sx class C cmt @ 518' & circulated to surface. Pump'd 10 sx down 13 3/8" csg to surface.

4. Perf'd @ 1630'. Sqz'd 50 sx class C cmt @ 1630-1430'. WOC & Tagged plug @ 1320'.

TOC @ 3,050'

12-1/4" Hole

8-5/8" (32#) @ 4,473' w/ 2,049 sx

3. Perf'd csg @ 2720'. Sqz'd 60 sx class C cmt w/ 2% CACL @ 2470'. WOC. Pressure tested csg, held 500 PSI. Tagged plug @ 2444'.

2. Set 5 1/2" CIBP @ 4860'. Circ'd hole w/ 120 bbls MLF. Pressure tested csg, held 500 PSI. Spotted 60 sx class C cmt w/ 2% CACL @ 4860-4267'. WOC. Tagged plug @ 4276'.

Shot 1 JSPF @ 4,921'-4,928', 4,931'-4,935', & 4,944'-4,953' total 23 holes

1. Tagged existing 5 1/2" CIBP w/ 35' cmt on top @ 4975'.

5-1/2" CIBP @ 5,010' w/ 35' cmt to 4,975'

5-1/2" CIBP @ 7,050' w/ 35' cmt to 7,015'

7-7/8" Hole

5-1/2" (15.5#) @ 7,250' w/ 950 sx

Spot 50 sx cmt @ 7,500'

Spot 60 sx cmt from 10,335' - 10,185'

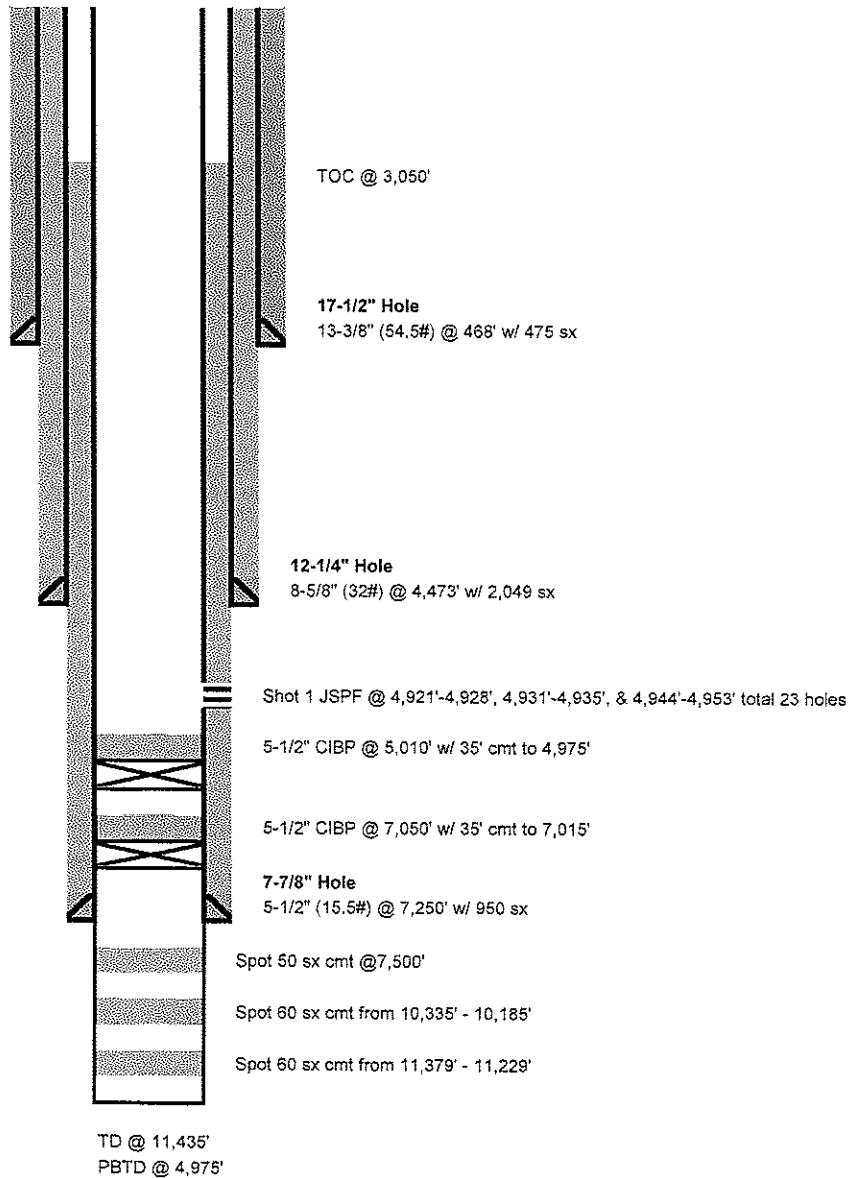
Spot 60 sx cmt from 11,379' - 11,229'

TD @ 11,435'

PBTd @ 4,975'

COG Operating			CURRENT
Author:	JCW (03/2021)	API #	30-025-31698
Well Name	Corbin 13 A Fed #1	Legal	1830' FSL & 660' FEL
Formation	Delaware		Sec 13 T18S R32E
County	Lea		
State	New Mexico		
Spud Date	2/24/1993		
GL	3,837.4'		

Description	O.D.	Hole	Grade	Weight	Depth	Cmt Sx	TOC
Surface Csg	13.375"	17.5"	J-55	54.5	468'	475	surface
Inter Csg	8.625"	12.25"	J-55	32	4,473'	2,049	surface
Prod Csg	5.5"	7.875"	K-55	15.5	7,250'	950	3,050'
Liner							



District I
1625 N. French Dr., Hobbs, NM 88240
Phone:(575) 393-6161 Fax:(575) 393-0720
District II
811 S. First St., Artesia, NM 88210
Phone:(575) 748-1283 Fax:(575) 748-9720
District III
1000 Rio Brazos Rd., Aztec, NM 87410
Phone:(505) 334-6178 Fax:(505) 334-6170
District IV
1220 S. St Francis Dr., Santa Fe, NM 87505
Phone:(505) 476-3470 Fax:(505) 476-3462

State of New Mexico
Energy, Minerals and Natural Resources
Oil Conservation Division
1220 S. St Francis Dr.
Santa Fe, NM 87505

COMMENTS

Action 91018

COMMENTS

Operator: COG OPERATING LLC 600 W Illinois Ave Midland, TX 79701	OGRID: 229137
	Action Number: 91018
	Action Type: [C-103] Sub. Plugging (C-103P)

COMMENTS

Created By	Comment	Comment Date
plmartinez	DATA ENTRY PM	12/2/2022

District I
1625 N. French Dr., Hobbs, NM 88240
Phone:(575) 393-6161 Fax:(575) 393-0720
District II
811 S. First St., Artesia, NM 88210
Phone:(575) 748-1283 Fax:(575) 748-9720
District III
1000 Rio Brazos Rd., Aztec, NM 87410
Phone:(505) 334-6178 Fax:(505) 334-6170
District IV
1220 S. St Francis Dr., Santa Fe, NM 87505
Phone:(505) 476-3470 Fax:(505) 476-3462

State of New Mexico
Energy, Minerals and Natural Resources
Oil Conservation Division
1220 S. St Francis Dr.
Santa Fe, NM 87505

CONDITIONS

Action 91018

CONDITIONS

Operator: COG OPERATING LLC 600 W Illinois Ave Midland, TX 79701	OGRID: 229137
	Action Number: 91018
	Action Type: [C-103] Sub. Plugging (C-103P)

CONDITIONS

Created By	Condition	Condition Date
gcordero	None	12/1/2022