

Well Name: MARTIN-WHITTAKER	Well Location: T23N / R4W / SEC 6 / NENE /	County or Parish/State: RIO ARRIBA / NM
Well Number: 27	Type of Well: OIL WELL	Allottee or Tribe Name: JICARILLA APACHE
Lease Number: JIC362	Unit or CA Name:	Unit or CA Number:
US Well Number: 3003923431	Well Status: Abandoned	Operator: DJR OPERATING LLC

Subsequent Report

Sundry ID: 2702730

Type of Submission: Subsequent Report Type of Action: Plug and Abandonment

Date Sundry Submitted: 11/12/2022 Time Sundry Submitted: 01:02

Date Operation Actually Began: 10/31/2022

Actual Procedure: The subject well was Plugged & Abandoned on 10/31/22 per the attached End of Well Report, As Plugged Wellbore Diagram, and Marker.

SR Attachments

Actual Procedure

EOW_BLM_Submittal_20221112130228.pdf

Well Name: MARTIN-WHITTAKER	Well Location: T23N / R4W / SEC 6 / NENE /	County or Parish/State: RIO ARRIBA / NM
Well Number: 27	Type of Well: OIL WELL	Allottee or Tribe Name: JICARILLA APACHE
Lease Number: JIC362	Unit or CA Name:	Unit or CA Number:
US Well Number: 3003923431	Well Status: Abandoned	Operator: DJR OPERATING LLC

Operator

I certify that the foregoing is true and correct. Title 18 U.S.C. Section 1001 and Title 43 U.S.C. Section 1212, make it a crime for any person knowingly and willfully to make to any department or agency of the United States any false, fictitious or fraudulent statements or representations as to any matter within its jurisdiction. Electronic submission of Sundry Notices through this system satisfies regulations requiring a

Operator Electronic Signature: SHAW-MARIE FORD

Signed on: NOV 12, 2022 01:02 PM

Name: DJR OPERATING LLC

Title: Regulatory Specialist

Street Address: 1 Road 3263

City: AztecState: NM

Phone: (505) 632-3476

Email address: sford@djrlc.com

Field

Representative Name:

Street Address:

City:State:Zip:

Phone:

Email address:

BLM Point of Contact

BLM POC Name: KENNETH G RENNICK

BLM POC Title: Petroleum Engineer

BLM POC Phone: 5055647742

BLM POC Email Address: krennick@blm.gov

Disposition: Accepted

Disposition Date: 11/14/2022

Signature: Kenneth Rennick

DJR Operating, LLC
P&A End of Well Report
Martin Whittaker 27
API # 30-039-23431
NE/NE Unit A. Sec 6, T23N, R4W
Rio Arriba County, NM
Spud Date: 4-24-1984
Plug Date: 10-31-2022

10-21-2022:

MIRU. SITP = 20, SICP = 60, BH = 5.

10-22-2022:

Hot oil tubing and rods. Pull rods and 2 3/8" tubing.

10-25-2022:

SITP = N/A, SICP = 15, BH = 5. PU workstring and scraper, run string mill, tagged up at 6295'. The Tocito and Semilla perforations are covered with 98' of fill. BLM and NMOCD gave approval to leave the fill over the Tocito and Semilla perforations, set CR above the Upper Gallup perforations and pump plug through CR to plug the Upper and Lower Gallup zones with 1 plug. TOO. H.

10-26-2022:

TIH with cement retainer, set CR at 5444'. Load and roll hole. PT casing, good test. P&A Plug 1: Upper and Lower Gallup perforations and Gallup formation top: Mix and pump 50 sx, (42 sx through CR, sting out and place 8 sx on top of CR). TOO. H. RIH, run CBL from 5336' to surface. TOC; 1405' with some stringers up to 1080'. TIH with workstring to 5007'. SDFN.

10-27-2022:

P&A Plug 2: Intermediate casing shoe, liner top and Mancos formation top: Mix and spot a balanced plug of 33 sx from 5007' to 4740'. Pull up to 4121'.
P&A Plug 3: Mesa Verde formation top: Mix and spot a balanced plug of 30 sx from 4121' to 3965'. Pull up to 3051'.
P&A Plug 4: Chacra formation top: Mix and pump a balanced plug of 30 sx from 3051' to 2895'. Pull up to 2608'.
P&A Plug 5: Pictured Cliffs, Fruitland, Kirtland and Ojo Alamo formation tops: Mix and spot a balanced plug of 135 sx from 2608' to 1906'. TOO. H. RIH, perforate holes at 739'. POOH.
TIH with CR, set CR at 689'.
P&A Plug 6: Nacimiento formation top: Mix and pump a plug of 56 sx, (26 sx outside casing, 10 sx under CR and 20 sx above CR. (TOC; 539' outside, 589' inside).
SDFN.

10-28-2022:

RIH, perforate holes at 300'. POOH.

P&A Plug 7: Surface casing shoe to surface: Establish circulation down casing and out BH. Mix and pump a plug of 151 sx down casing and out BH. Good cement returns out BH. SDFWE.

10-31-2022:

Cut off WH, TOC at surface in casing and annulus. Install P&A marker. Top off with cellar with 13 sx.

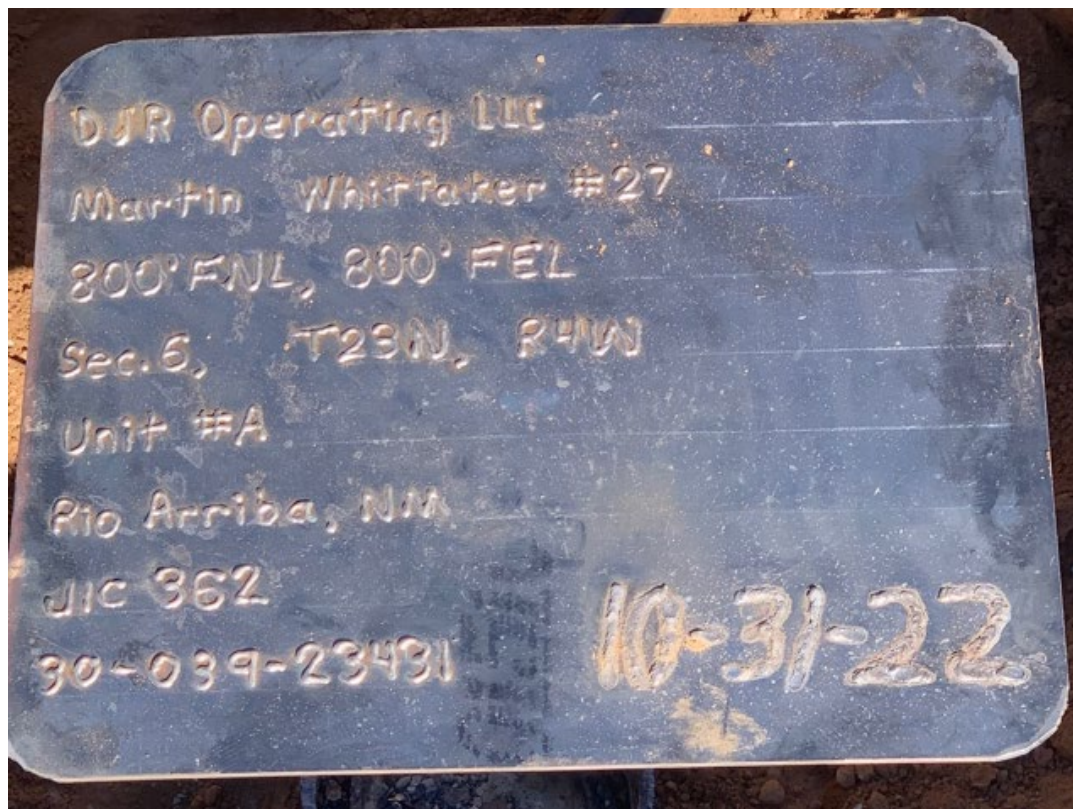
Release Rig.

All cement used was Class G mixed at 15.8 ppg, yield 1.15 cu. ft/sx

Regulatory representative: Gail Clayton, BLM, and Monica Kuehling, NMOCD via phone.

GPS Coordinates: Lat; 36.2571148 N, Long; 107.2917040 W

DJR Operating, LLC
P&A Marker
Martin Whittaker 27
API # 30-039-23431
NE/NE Unit A. Sec 6, T23N, R4W
Rio Arriba County, NM
Spud Date: 4-24-1984
Plug Date: 10-31-2022





United States Department of the Interior

BUREAU OF INDIAN AFFAIRS

Jicarilla Agency

P.O. Box 167

Dulce, New Mexico 87528

IN REPLY REFER TO:

Branch of Real Estate Services

November 15, 2019

Memorandum

To: Robert Switzer, Environmental Protection Specialist
Bureau of Land Management, Farmington Field Office

From: Kurt Sandoval, Realty Officer
Bureau of Indian Affairs, Jicarilla Agency

Subject: BIA Concurrence concerning Well Pad Monument Makers

Let this serve as concurrence for the agreed upon preferred method to be used when constructing well pad monument markers on Jicarilla Apache Tribal Lands. We will eliminate the 6 ft. dry hole marker and use a permanent metal plate that will be installed at ground level, effective September 2019. The marker will contain the following information:

- Well Pad Lease Number
- Well Pad Location Name and Number
- Well Pad Legal Description, specifically Section, Township and Range
- Well Pad API Number
- Well Pad Plug Date
- Well Pad Operator Name

You may contact our office if you have any questions or concerns at (575) 759-3936. Thank you.


Realty Officer

cc: Jicarilla Oil and Gas Administration

12" x 18" MINIMUM

End of Well Report

DJR Operating, LLC

Martin Whittaker 27

API # 30-039-23431
NE/NE, Unit A, Sec 6 T23N, R4W
Rio Arriba, NM

GL 6891'
KB 6904'
Spud Date 4/24/1984

SURF CSG

Hole size 12.25"
Csg Size: 9.625"
Wt: 32#
Grade: J-55
ID: 9.001
Depth 255'
Csg cap ft3: 0.4418
TOC: Circ cmt to surface

FORMATION TOPS

San Jose	Surface
Nacimiento	689'
Ojo Alamo	2060'
Kirtland	2205'
Fruitland	2450'
Pictured Cliffs	2559'
Chacra	3000'
Mesa Verde	4070'
Mancos	4952'
Gallup	5731'

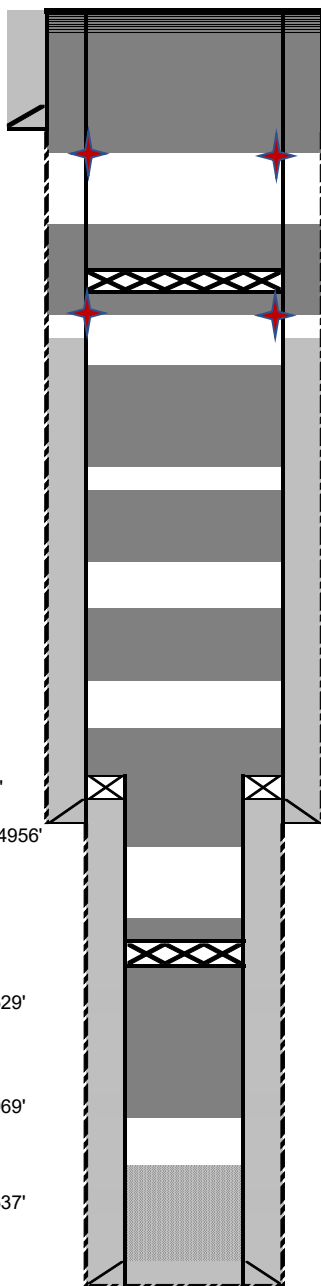
PROD CSG

Hole size 8.75"
Csg Size: 7"
Wt: 23#
Grade: J-55
ID: 6.366"
Depth 4956'
Csg cap ft3: 0.2210
Csg/Csg Ann ft3: 0.1668
Csg/OH cap ft3: 0.1503
TOC: 1800' (TS)

Liner

Hole size 6.125"
Csg Size: 4.5"
Wt: 11.6#
Grade: K-55
ID: 4.0000
Depth 4842-6682'
Csg cap ft3: 0.0872
Csg/OH cap ft3: 0.1026
TOC: 4920' (CBL)

Upper Gallup Perfs	5492-5529'
Lower Gallup Perfs	5755-5969'
Tocito-Semilla Perfs	6393-6537'
PBTD	6682'
TD	6685'



10-31-2022: Cut off WH, TOC at surface in casing and annulus. Install P&A marker, top off cellar with 13 sx.

10-28-2022: Plug 7: Surface casing shoe to surface: Perforate holes at 305'. Establish circulation down casing and out BH. Mix and pump plug of 151 sx down casing and out BH. Good cement returns out BH.

10-27-2022: Plug 6: Nacimiento: Perforate at 739', set CR at 689'. Mix and pump plug of 56 sx, (26 sx outside, 10 sx under CR, 20 sx above CR). TOC; 539' outside, 589' inside.

10-27-2022: Plug 5: Pictured Cliffs, Fruitland, Kirtland and Ojo Alamo: Mix and spot balanced plug of 135 sx from 2608' to 1906'.

10-27-2022: Plug 4: Chacra: Mix and spot balanced plug of 30 sx from 3051' to 2895'.

10-27-2022: Plug 3: Mesaverde: Mix and spot balanced plug of 30 sx from 4121' to 3965'.

10-27-2022: Plug 2: Mancos, 7" casing shoe, liner top: Mix and spot a balanced plug of 33 sx from 5007' to 4740'.

10-26-2022: Run CBL from 5336' to surface. TOC; 1405', stringers to 1080'

10-26-2022: Plug 1: Upper and Lower Gallup perfs: Set CR at 5444'. PT casing, good test. Mix and pump plug of 50 sx (42 sx below CR, 8 sx above CR). TOC 5336'.

10-25-2022: BLM and NMOCD approved setting CR above Upper Gallup perfs and plugging Gallup with 1 plug.

10-25-2022: Tagged fill at 6295'.

All cement used was Class G mixed at 15.8 pg, yield 1.15 cuft/sx
Regulatory representative: Gail Clayton, BLM and Monica Kuehling, NMOCD via phone
GPS coordinates: Lat; 36.2571148 N, Long; 107.2917040 W

District I
1625 N. French Dr., Hobbs, NM 88240
Phone:(575) 393-6161 Fax:(575) 393-0720
District II
811 S. First St., Artesia, NM 88210
Phone:(575) 748-1283 Fax:(575) 748-9720
District III
1000 Rio Brazos Rd., Aztec, NM 87410
Phone:(505) 334-6178 Fax:(505) 334-6170
District IV
1220 S. St Francis Dr., Santa Fe, NM 87505
Phone:(505) 476-3470 Fax:(505) 476-3462

State of New Mexico
Energy, Minerals and Natural Resources
Oil Conservation Division
1220 S. St Francis Dr.
Santa Fe, NM 87505

COMMENTS

Action 158757

COMMENTS

Operator: DJR OPERATING, LLC 1 Road 3263 Aztec, NM 87410	OGRID: 371838
	Action Number: 158757
	Action Type: [C-103] Sub. Plugging (C-103P)

COMMENTS

Created By	Comment	Comment Date
mkuehling	well pressures not recorded daily well plugged 10/31/22	12/6/2022

District I
1625 N. French Dr., Hobbs, NM 88240
Phone:(575) 393-6161 Fax:(575) 393-0720
District II
811 S. First St., Artesia, NM 88210
Phone:(575) 748-1283 Fax:(575) 748-9720
District III
1000 Rio Brazos Rd., Aztec, NM 87410
Phone:(505) 334-6178 Fax:(505) 334-6170
District IV
1220 S. St Francis Dr., Santa Fe, NM 87505
Phone:(505) 476-3470 Fax:(505) 476-3462

State of New Mexico
Energy, Minerals and Natural Resources
Oil Conservation Division
1220 S. St Francis Dr.
Santa Fe, NM 87505

CONDITIONS

Action 158757

CONDITIONS

Operator: DJR OPERATING, LLC 1 Road 3263 Aztec, NM 87410	OGRID: 371838
	Action Number: 158757
	Action Type: [C-103] Sub. Plugging (C-103P)

CONDITIONS

Created By	Condition	Condition Date
mkuehling	None	12/6/2022