

Well Name: AXI APACHE C	Well Location: T23N / R5W / SEC 4 / SWSW / 36.249194 / -107.372308	County or Parish/State: RIO ARRIBA / NM
Well Number: 1	Type of Well: CONVENTIONAL GAS WELL	Allottee or Tribe Name: JICARILLA APACHE
Lease Number: JIC39	Unit or CA Name:	Unit or CA Number:
US Well Number: 3003905147	Well Status: Abandoned	Operator: DJR OPERATING LLC

Subsequent Report

Sundry ID: 2685169

Type of Submission: Subsequent Report

Date Sundry Submitted: 08/02/2022

Date Operation Actually Began: 07/25/2022

Type of Action: Plug and Abandonment

Time Sundry Submitted: 09:44

Actual Procedure: The subject well was Plugged & Abandoned on 07/25/2022 per the attached End of Well Report, As Plugged Wellbore Diagram, and Marker.

SR Attachments

Actual Procedure

EOW_Summary_BLM_20220802094437.pdf

Well Name: AXI APACHE C	Well Location: T23N / R5W / SEC 4 / SWSW / 36.249194 / -107.372308	County or Parish/State: RIO ARRIBA / NM
Well Number: 1	Type of Well: CONVENTIONAL GAS WELL	Allottee or Tribe Name: JICARILLA APACHE
Lease Number: JIC39	Unit or CA Name:	Unit or CA Number:
US Well Number: 3003905147	Well Status: Abandoned	Operator: DJR OPERATING LLC

Operator

I certify that the foregoing is true and correct. Title 18 U.S.C. Section 1001 and Title 43 U.S.C. Section 1212, make it a crime for any person knowingly and willfully to make to any department or agency of the United States any false, fictitious or fraudulent statements or representations as to any matter within its jurisdiction. Electronic submission of Sundry Notices through this system satisfies regulations requiring a

Operator Electronic Signature: SHAW-MARIE FORD
Signed on: AUG 02, 2022 09:44 AM
Name: DJR OPERATING LLC
Title: Regulatory Specialist
Street Address: 1 Road 3263
City: Aztec State: NM
Phone: (505) 632-3476
Email address: sford@djrlc.com

Field

Representative Name:
Street Address:
City: State: Zip:
Phone:
Email address:

BLM Point of Contact

BLM POC Name: KENNETH G RENNICK
BLM POC Title: Petroleum Engineer
BLM POC Phone: 5055647742
BLM POC Email Address: krennick@blm.gov
Disposition: Accepted
Disposition Date: 08/03/2022
Signature: Kenneth Rennick

DJR Operating, LLC
P&A End of Well Report
AXI Apache C 1
API # 30-039-05147
SW/SW, Unit M, Sec 4, T23N, R5W
Rio Arriba County, NM
Spud Date: 4-14-1955
Plug Date: 7-25-2022

7-5-2022:

MIRU rig and equipment. _ SITP = 20, SICP = 55, BH = 0. NDWH, NU BOP.

7-6-2022:

TOOH with 1 1/4" production tubing. TIH with 2 3/8" workstring to 2130'.

P&A Plug 1: Pictured Cliffs perforations: Mix and pump a blind plug of 134 sx from 2130'. WOC.

7-7-2022:

Tagged Plug 1 at 1735'.

P&A Plug 2: Pictured Cliffs and Fruitland: TIH with 2 3/8" workstring to 1735'. PT casing, good test. Mix and pump balanced plug of 102 sx from 1735' to 1465'. Pull up to 481'.

P&A Plug 3: Nacimiento and surface casing shoe to surface. Mix and pump plug of 210 sx from 481' to surface.

Release rig. (Will need backhoe to excavate around WH prior to cutting off WH.)

7-25-2022:

MI backhoe, excavate around WH. Cut off WH. Install P&A marker. Top off casings and cellar with 20 sx.

All cement used: Class G cement mixed at 15.8 ppg, yield 1.15

Regulatory Representative: Darrell Priddy, BLM and Monica Kuehling, NMOCD via phone

GPS Coordinates: Lat; 36.24968 N, Long; 107.37186 W

DJR Operating, LLC
P&A Marker
AXI Apache C 1
API # 30-039-05147
SW/SW, Unit M, Sec 4, T23N, R5W
Rio Arriba County, NM
Spud Date: 4-14-1955
Plug Date: 7-25-2022





United States Department of the Interior

BUREAU OF INDIAN AFFAIRS

Jicarilla Agency

P.O. Box 167

Dulce, New Mexico 87528

IN REPLY REFER TO:

Branch of Real Estate Services

November 15, 2019

Memorandum

To: Robert Switzer, Environmental Protection Specialist
Bureau of Land Management, Farmington Field Office

From: Kurt Sandoval, Realty Officer
Bureau of Indian Affairs, Jicarilla Agency

Subject: BIA Concurrence concerning Well Pad Monument Makers

Let this serve as concurrence for the agreed upon preferred method to be used when constructing well pad monument markers on Jicarilla Apache Tribal Lands. We will eliminate the 6 ft. dry hole marker and use a permanent metal plate that will be installed at ground level, effective September 2019. The marker will contain the following information:

- Well Pad Lease Number
- Well Pad Location Name and Number
- Well Pad Legal Description, specifically Section, Township and Range
- Well Pad API Number
- Well Pad Plug Date
- Well Pad Operator Name

You may contact our office if you have any questions or concerns at (575) 759-3936. Thank you.


Realty Officer

cc: Jicarilla Oil and Gas Administration

12" x 18" MINIMUM

End of Well Report

DJR Operating, LLC

AXI Apache C 1

API # 30-039-05147
SW/SW, Unit M, Sec 4, T23N, R5W
Rio Arriba County, NM

GL 6636'
KB 6647'
Spud Date 4/14/1955

SURF CSG

Hole size 17.5"
Csg Size: 13.375"
Wt: 48#
Grade: H-40
ID: 12.715"
Depth 431'
TOC: Circulated 35 sx cement to surface.

INT CSG

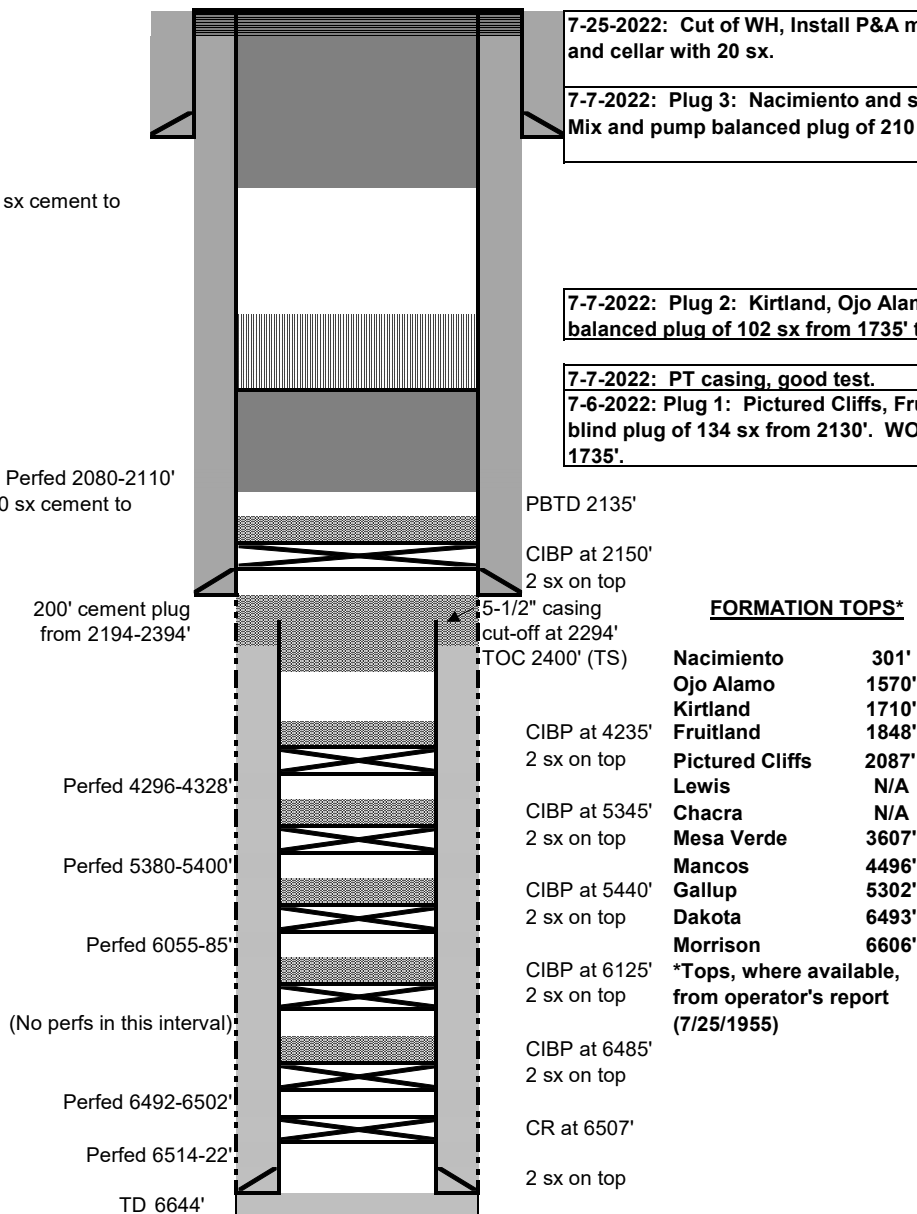
Hole size 12.25"
Csg Size: 9.625"
Wt: 36#
Grade: J-55
ID: 8.921"
Depth 2164'
Csg/Csq Ann ft³: 0.3765
Csg/OH cap ft³: 0.3132 Perfed 2080-2110'
TOC: Circulated 100 sx cement to surface.

PROD CSG

Hole size 8.75"
Csg Size: 5.5" 200' cement plug from 2194-2394'
Wt: 15.5#
Grade: J-55
ID: 4.950"
Cut-off Depth* 2294'
TOC: 2400' (TS)

*5-1/2" casing cut off in July 1955

5-1/2" casing from 2294-6644'
after cut-off 7/1955



7-25-2022: Cut of WH, Install P&A marker. Top off casings and cellar with 20 sx.

7-7-2022: Plug 3: Nacimiento and surface casing shoe: Mix and pump balanced plug of 210 sx from 481' to surface.

7-7-2022: Plug 2: Kirtland, Ojo Alamo: Mix and pump balanced plug of 102 sx from 1735' to 1465'.

7-7-2022: PT casing, good test.

7-6-2022: Plug 1: Pictured Cliffs, Fruitland: Mix and pump blind plug of 134 sx from 2130'. WOC. 7-7-2022: Tagged at 1735'.

PBTD 2135'

CIBP at 2150'

2 sx on top

5-1/2" casing

cut-off at 2294'

TOC 2400' (TS)

FORMATION TOPS*

Nacimiento	301'
Ojo Alamo	1570'
Kirtland	1710'
Fruitland	1848'
Pictured Cliffs	2087'
Lewis	N/A
Chacra	N/A
Mesa Verde	3607'
Mancos	4496'
Gallup	5302'
Dakota	6493'
Morrison	6606'

*Tops, where available, from operator's report (7/25/1955)

CIBP at 4235'

2 sx on top

CIBP at 5345'

2 sx on top

CIBP at 5440'

2 sx on top

CIBP at 6125'

2 sx on top

CIBP at 6485'

2 sx on top

CR at 6507'

2 sx on top

NOTE: All CIBPs and plugs set below the Pictured Cliffs were done prior to the 2022 P&A operations.

All cement used in 2022 P&A was Class G, mixed at 15.8 ppg, yield 1.15 cu ft/sx
Regulatory representative: Darrell Priddy, BLM and Monica Kuehling, NMOCD via phone.
GPS coordinates: Lat, 36.24968 N, Long, 107.37186 W

District I
1625 N. French Dr., Hobbs, NM 88240
Phone:(575) 393-6161 Fax:(575) 393-0720
District II
811 S. First St., Artesia, NM 88210
Phone:(575) 748-1283 Fax:(575) 748-9720
District III
1000 Rio Brazos Rd., Aztec, NM 87410
Phone:(505) 334-6178 Fax:(505) 334-6170
District IV
1220 S. St Francis Dr., Santa Fe, NM 87505
Phone:(505) 476-3470 Fax:(505) 476-3462

State of New Mexico
Energy, Minerals and Natural Resources
Oil Conservation Division
1220 S. St Francis Dr.
Santa Fe, NM 87505

COMMENTS

Action 131808

COMMENTS

Operator: DJR OPERATING, LLC 1 Road 3263 Aztec, NM 87410	OGRID: 371838
	Action Number: 131808
	Action Type: [C-103] Sub. Plugging (C-103P)

COMMENTS

Created By	Comment	Comment Date
mkuehling	no daily pressures on well	12/13/2022

District I
1625 N. French Dr., Hobbs, NM 88240
Phone:(575) 393-6161 Fax:(575) 393-0720

District II
811 S. First St., Artesia, NM 88210
Phone:(575) 748-1283 Fax:(575) 748-9720

District III
1000 Rio Brazos Rd., Aztec, NM 87410
Phone:(505) 334-6178 Fax:(505) 334-6170

District IV
1220 S. St Francis Dr., Santa Fe, NM 87505
Phone:(505) 476-3470 Fax:(505) 476-3462

State of New Mexico
Energy, Minerals and Natural Resources
Oil Conservation Division
1220 S. St Francis Dr.
Santa Fe, NM 87505

CONDITIONS

Action 131808

CONDITIONS

Operator: DJR OPERATING, LLC 1 Road 3263 Aztec, NM 87410	OGRID: 371838
	Action Number: 131808
	Action Type: [C-103] Sub. Plugging (C-103P)

CONDITIONS

Created By	Condition	Condition Date
mkuehling	well plugged 7/25/22	12/13/2022