

Well Name: AXI APACHE C	Well Location: T23N / R5W / SEC 4 / SWNW / 36.256961 / -107.371993	County or Parish/State: RIO ARRIBA / NM
Well Number: 10	Type of Well: CONVENTIONAL GAS WELL	Allottee or Tribe Name: JICARILLA APACHE
Lease Number: JIC39	Unit or CA Name:	Unit or CA Number:
US Well Number: 3003905168	Well Status: Abandoned	Operator: DJR OPERATING LLC

Subsequent Report

Sundry ID: 2685172

Type of Submission: Subsequent Report

Date Sundry Submitted: 08/02/2022

Date Operation Actually Began: 07/26/2022

Type of Action: Plug and Abandonment

Time Sundry Submitted: 09:47

Actual Procedure: The subject well was Plugged & Abandoned on 07/26/2022 per the attached End of Well Report, As Plugged Wellbore Diagram, and Marker.

SR Attachments

Actual Procedure

EOW_Summary_BLM_20220802094720.pdf

Well Name: AXI APACHE C	Well Location: T23N / R5W / SEC 4 / SWNW / 36.256961 / -107.371993	County or Parish/State: RIO ARRIBA / NM
Well Number: 10	Type of Well: CONVENTIONAL GAS WELL	Allottee or Tribe Name: JICARILLA APACHE
Lease Number: JIC39	Unit or CA Name:	Unit or CA Number:
US Well Number: 3003905168	Well Status: Abandoned	Operator: DJR OPERATING LLC

Operator

I certify that the foregoing is true and correct. Title 18 U.S.C. Section 1001 and Title 43 U.S.C. Section 1212, make it a crime for any person knowingly and willfully to make to any department or agency of the United States any false, fictitious or fraudulent statements or representations as to any matter within its jurisdiction. Electronic submission of Sundry Notices through this system satisfies regulations requiring a

Operator Electronic Signature: SHAW-MARIE FORD

Signed on: AUG 02, 2022 09:47 AM

Name: DJR OPERATING LLC

Title: Regulatory Specialist

Street Address: 1 Road 3263

City: AztecState: NM

Phone: (505) 632-3476

Email address: sford@djrlc.com

Field

Representative Name:

Street Address:

City:State:Zip:

Phone:

Email address:

BLM Point of Contact

BLM POC Name: KENNETH G RENNICK

BLM POC Title: Petroleum Engineer

BLM POC Phone: 5055647742

BLM POC Email Address: krennick@blm.gov

Disposition: Accepted

Disposition Date: 08/03/2022

Signature: Kenneth Rennick

DJR Operating, LLC
P&A End of Well Report
AXI Apache C 10
API # 30-039-05168
SW/NW , Unit E, Sec 4, T23N, R5W
Rio Arriba County, NM
Spud Date: 5-1-1963
Plug Date: 7-26-2022

7-22-2022:

MIRU rig and equipment. SITP = 50, SICP = 50, BH = 0.

NDWH, NU BOP. Pull 2 3/8" tubing.

RIH with WL gauge ring to 2200'. POOH.

7-25-2022:

TIH with 2 3/8" tbg and CR, set CR at 2166'. Load and roll hole. PT casing, good test.

P&A Plug 1: Pictured Cliffs perforations, sting into CR, mix and pump 10 sx through CR. TOOH.

RIH and run CBL log from 2166' to surface. POOH. TOC at 745'.

P&A Plug 2: Pictured Cliffs, Fruitland, Kirtland and Ojo Alamo: TIH to 2166', mix and spot balanced plug of 45 sx from 2166' to 1599'. TOOH.

Perforate holes at 480'. Attempt to establish circulation out BH, did not circulate.

P&A Plug 3: Nacimiento: TIH with CR, set CR at 435'. Mix and pump 34 sx, (18 outside, 4 under CR and 12 above CR. TOOH.

7-26-2022:

RIH to perforate holes for surface casing shoe plug. Tagged Plug 3 at 260'. (The intent was to bring Plug 3 up to 334', but 4 sx more than planned had been pumped.) Discussed with BLM and NMOCD. Approval to perforate at 260' and circulate cement to surface from 260'.

P&A Plug 4: Surface casing shoe to surface: Perforate holes at 260'. Establish circulation out BH. Mix and pump plug of 68 sx pumping down casing and out BH, good cement returns out BH.

Cut off WH. TOCs in casing and annulus at 4' and surface. Install P&A marker. Top off casings and cellar with 24 sx.

Release rig.

All cement used: Class G cement mixed at 15.8 ppg, yield 1.15 cu ft/sx

Regulatory Representative: Darrell Priddy, BLM and Monica Kuehling, NMOCD via phone

GPS Coordinates: Lat; 36.256944 N, Long; 107.371667 W

DJR Operating, LLC
P&A Marker
AXI Apache C 10
API # 30-039-05168
SW/NW , Unit E, Sec 4, T23N, R5W
Rio Arriba County, NM
Spud Date: 5-1-1963
Plug Date: 7-26-2022





United States Department of the Interior

BUREAU OF INDIAN AFFAIRS

Jicarilla Agency

P.O. Box 167

Dulce, New Mexico 87528

IN REPLY REFER TO:

Branch of Real Estate Services

November 15, 2019

Memorandum

To: Robert Switzer, Environmental Protection Specialist
Bureau of Land Management, Farmington Field Office

From: Kurt Sandoval, Realty Officer
Bureau of Indian Affairs, Jicarilla Agency

Subject: BIA Concurrence concerning Well Pad Monument Makers

Let this serve as concurrence for the agreed upon preferred method to be used when constructing well pad monument markers on Jicarilla Apache Tribal Lands. We will eliminate the 6 ft. dry hole marker and use a permanent metal plate that will be installed at ground level, effective September 2019. The marker will contain the following information:

- Well Pad Lease Number
- Well Pad Location Name and Number
- Well Pad Legal Description, specifically Section, Township and Range
- Well Pad API Number
- Well Pad Plug Date
- Well Pad Operator Name

You may contact our office if you have any questions or concerns at (575) 759-3936. Thank you.


Realty Officer

cc: Jicarilla Oil and Gas Administration

12" x 18" MINIMUM

End of Well Report
DJR Operating, LLC
AXI Apache C 10
API # 30-039-05168
SW/NW, Unit E, Sec 4, T23N, R5W
Rio Arriba County, NM

GL 6719'
 KB 6731'
 Spud Date 5/1/1963

Inconsistent elevations in filed paperwork. Used original acreage dedication plat, which matched open hole log. Also close to Google Earth elevation.

SURF CSG

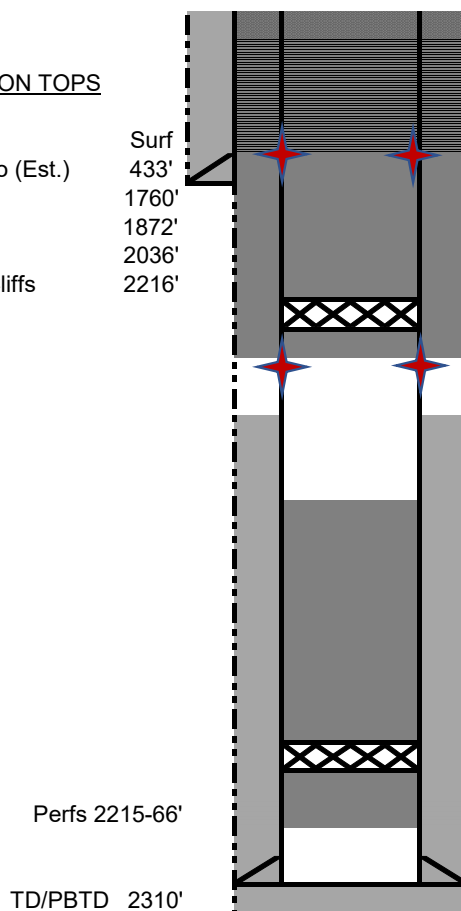
Hole size 11"
 Csg Size: 8.625"
 Wt: 24#
 Grade: J-55
 ID: 8.097"
 Depth 291'
 cap cf/ft: 0.3575
 TOC: N/A

FORMATION TOPS

San Jose	Surf
Nacimiento (Est.)	433'
Ojo Alamo	1760'
Kirtland	1872'
Fruitland	2036'
Pictured Cliffs	2216'

PROD CSG

Hole size 6.75"
 Csg Size: 4.5"
 Wt: 9.5"
 Grade: J-55
 ID: 4.090"
 Depth 2310'
 cap cf/ft: 0.0912
 Csg/Csg , cf/ft: 0.2318
 Csg/OH cuft: 0.1381
 TOC: 1412' (calc)



7-26-2022: Cut off WH. Install P&A marker, top off with 24 sx.

7-26-2022: Plug 4: Reviewed TOC from Plug 3 with BLM and NMOCD. Approval to perforate at TOC and circulate cement to surface. Perforate at 260'. Mix and pump 68 sx down casing and out BH, good cement returns out BH.

7-25-2022: Plug 3: Nacimiento top: Perf holes at 480'. Set CR at 435'. Mix and pump 34 sx (18 outside casing, 4 under CR, 12 above CR). 7-26-2022: Tagged at 260'.

7-25-2022: Plug 2: Pictured Cliffs, Fruitland, Kirtland and Ojo Alamo: Mix and spot balanced plug of 45 sx from 2166' to 1599'.

7-25-2022: Run CBL from 2166' to surface, TOC 745'.

7-25-2022: Plug 1: Pictured Cliffs perfs: TIH, set CR at 2166'. Load and roll hole, PT casing, good test. Mix and pump 10 sx through CR into perfs.

All Cement used was Class G, mixed at 155.8 ppg, yield 1.15 cu ft/sx
 Regulatory representative, Darrell Priddy, BLM and Monica Kuehling, NMOCD via phone
 GPS Coordinates; Lat, 36.256944, Long, 107.371667

District I
1625 N. French Dr., Hobbs, NM 88240
Phone:(575) 393-6161 Fax:(575) 393-0720
District II
811 S. First St., Artesia, NM 88210
Phone:(575) 748-1283 Fax:(575) 748-9720
District III
1000 Rio Brazos Rd., Aztec, NM 87410
Phone:(505) 334-6178 Fax:(505) 334-6170
District IV
1220 S. St Francis Dr., Santa Fe, NM 87505
Phone:(505) 476-3470 Fax:(505) 476-3462

State of New Mexico
Energy, Minerals and Natural Resources
Oil Conservation Division
1220 S. St Francis Dr.
Santa Fe, NM 87505

COMMENTS

Action 131810

COMMENTS

Operator: DJR OPERATING, LLC 1 Road 3263 Aztec, NM 87410	OGRID: 371838
	Action Number: 131810
	Action Type: [C-103] Sub. Plugging (C-103P)

COMMENTS

Created By	Comment	Comment Date
mkuehling	no daily pressures on well	12/13/2022

District I
1625 N. French Dr., Hobbs, NM 88240
Phone:(575) 393-6161 Fax:(575) 393-0720

District II
811 S. First St., Artesia, NM 88210
Phone:(575) 748-1283 Fax:(575) 748-9720

District III
1000 Rio Brazos Rd., Aztec, NM 87410
Phone:(505) 334-6178 Fax:(505) 334-6170

District IV
1220 S. St Francis Dr., Santa Fe, NM 87505
Phone:(505) 476-3470 Fax:(505) 476-3462

State of New Mexico
Energy, Minerals and Natural Resources
Oil Conservation Division
1220 S. St Francis Dr.
Santa Fe, NM 87505

CONDITIONS

Action 131810

CONDITIONS

Operator: DJR OPERATING, LLC 1 Road 3263 Aztec, NM 87410	OGRID: 371838
	Action Number: 131810
	Action Type: [C-103] Sub. Plugging (C-103P)

CONDITIONS

Created By	Condition	Condition Date
mkuehling	well plugged 7/26/22	12/13/2022