

Well Name: JICARILLA APACHE C	Well Location: T24N / R5W / SEC 26 / SWSW / 36.277418 / -107.336005	County or Parish/State: RIO ARRIBA / NM
Well Number: 4	Type of Well: CONVENTIONAL GAS WELL	Allottee or Tribe Name: JICARILLA APACHE
Lease Number: JIC13	Unit or CA Name:	Unit or CA Number:
US Well Number: 3003926886	Well Status: Abandoned	Operator: DJR OPERATING LLC

Subsequent Report

Sundry ID: 2689353

Type of Submission: Subsequent Report

Date Sundry Submitted: 08/26/2022

Date Operation Actually Began: 08/19/2022

Type of Action: Plug and Abandonment

Time Sundry Submitted: 11:14

Actual Procedure: The subject well was Plugged & Abandoned on 08/19/22 per the attached End of Well Report, As Plugged Wellbore Diagram, and Marker.

SR Attachments

Actual Procedure

EOWR_BLM_Submittal_20220826111421.pdf

Well Name: JICARILLA APACHE C	Well Location: T24N / R5W / SEC 26 / SWSW / 36.277418 / -107.336005	County or Parish/State: RIO ARRIBA / NM
Well Number: 4	Type of Well: CONVENTIONAL GAS WELL	Allottee or Tribe Name: JICARILLA APACHE
Lease Number: JIC13	Unit or CA Name:	Unit or CA Number:
US Well Number: 3003926886	Well Status: Abandoned	Operator: DJR OPERATING LLC

Operator

I certify that the foregoing is true and correct. Title 18 U.S.C. Section 1001 and Title 43 U.S.C. Section 1212, make it a crime for any person knowingly and willfully to make to any department or agency of the United States any false, fictitious or fraudulent statements or representations as to any matter within its jurisdiction. Electronic submission of Sundry Notices through this system satisfies regulations requiring a

Operator Electronic Signature: SHAW-MARIE FORD	Signed on: AUG 26, 2022 11:14 AM
Name: DJR OPERATING LLC	
Title: Regulatory Specialist	
Street Address: 1 Road 3263	
City: Aztec	State: NM
Phone: (505) 632-3476	
Email address: sford@djrlc.com	

Field

Representative Name:		
Street Address:		
City:	State:	Zip:
Phone:		
Email address:		

BLM Point of Contact

BLM POC Name: KENNETH G RENNICK	BLM POC Title: Petroleum Engineer
BLM POC Phone: 5055647742	BLM POC Email Address: krennick@blm.gov
Disposition: Accepted	Disposition Date: 08/29/2022
Signature: Kenneth Rennick	

DJR Operating, LLC
P&A End of Well Report
Jicarilla Apache C 4
API # 30-039-26886
SW/SW , Unit M, Sec 26, T24N, R5W
Rio Arriba County, NM
Spud Date: 2-7-2002
Plug Date: 8-19-2022

8-15-2022:

MIRU rig and equipment. SITP = 740, SICP = 1750, BH = 0.

8-16-2022:

SITP = 375, SICP = 1500, BH = 0. Bleed down well. Pump 13 bbl with hot oil truck, tbg pressured up. NDWH, NU BOP. Run swab tools to unload tbg, could not get past 600'. Will get slickline to punch hole in tbg tomorrow.

8-17-2022:

RIH with slickline, punch hole at 6221'. Pull 2 3/8" tubing. PU and TIH with 2 3/8" workstring with string mill to 6670'.

8-18-2022:

TIH, set cement retainer at 6650'. Load and roll the hole. Pressure test casing, good test.

P&A Plug 1: Dakota formation top and perforations: Mix and pump 10 sx through CR, sting out and place 12 sx above CR. Pull up to 5598'.

P&A Plug 2: Gallup formation top: Mix and pump balanced plug of 13 sx from 5598' to 5431'. Pull up to 4846'.

P&A Plug 3: Mancos formation top: Mix and pump balanced plug of 13 sx from 4846' to 4679'. Pull up to 3868'.

P&A Plug 4: Mesa Verde formation top: Mix and pump balanced plug of 13 sx from 3868' to 3700'. TOOH.

8-19-2022:

P&A Plug 5: Chacra formation top: TIH with workstring to 3201'. Mix and pump balanced plug of 13 sx from 3201' to 3034'. Pull up to 2352'.

P&A Plug 6: Pictured Cliffs, Fruitland, Kirtland and Ojo Alamo formation tops: Mix and pump balanced plug of 52 sx from 2352' to 1684'. TOOH.

Run CBL from 1200' to surface.

P&A Plug 7: Nacimiento formation top: TIH to 1186'. Mix and pump balanced plug of 13 sx from 1186' to 1019'. As per NMOCD, SD and SI for 2 hrs to monitor BH pressure. BH pressure was 0.8 psi after 2 hrs. Approval to pump surface casing shoe plug as inside plug.

P&A Plug 8: Surface casing shoe to surface. TIH to 422', mix and pump balanced plug of 36 sx from 422' to surface. TOOH.

Cut off WH, TOC in casing at 36', annulus at surface. Install P&A marker. Top off casing and cellar with 14 sx.

Release rig.

All cement used: Class G cement mixed at 15.8 ppg, yield 1.15

Regulatory Representative: Jimmie Dobson, BLM, and Monica Kuehling, NMOCD via phone

GPS Coordinates: Lat; 36.2780801 N, Long; 107.3355306 W

DJR Operating, LLC
P&A Marker
Jicarilla Apache C 4
API # 30-039-26886
SW/SW, Unit M, Sec 26, T24N, R5W
Rio Arriba County, NM
Spud Date: 2-7-2002
Plug Date: 8-19-2022





United States Department of the Interior

BUREAU OF INDIAN AFFAIRS

Jicarilla Agency

P.O. Box 167

Dulce, New Mexico 87528

IN REPLY REFER TO:

Branch of Real Estate Services

November 15, 2019

Memorandum

To: Robert Switzer, Environmental Protection Specialist
Bureau of Land Management, Farmington Field Office

From: Kurt Sandoval, Realty Officer
Bureau of Indian Affairs, Jicarilla Agency

Subject: BIA Concurrence concerning Well Pad Monument Makers

Let this serve as concurrence for the agreed upon preferred method to be used when constructing well pad monument markers on Jicarilla Apache Tribal Lands. We will eliminate the 6 ft. dry hole marker and use a permanent metal plate that will be installed at ground level, effective September 2019. The marker will contain the following information:

- Well Pad Lease Number
- Well Pad Location Name and Number
- Well Pad Legal Description, specifically Section, Township and Range
- Well Pad API Number
- Well Pad Plug Date
- Well Pad Operator Name

You may contact our office if you have any questions or concerns at (575) 759-3936. Thank you.


Realty Officer

cc: Jicarilla Oil and Gas Administration

12" x 18" MINIMUM

**End of Well Report
DJR Operating, LLC
Jicarilla Apache C 4**

API # 30-039-26886
SW/SW, Unit M, Sec 26, T24N, R5W
Rio Arriba County, NM

GL 6675'
KB 6687'
Spud Date 2/7/2002

SURF CSG

Hole size 12.25"
Csg Size: 8.625"
Wt: 24#
Grade: J-55
ID: 8.097"
Depth 359'
Csg cap ft³: 0.3576
TOC: Cement to surface

FORMATION TOPS

Nacimiento	1136'
Ojo Alamo	1784'
Kirtland	1928'
Fruitland	2149'
Pictured Cliffs	2302'
Lewis	2410'
Chacra	3142'
Mesa Verde	3818'
Mancos	4780'
Gallup	5535'
Dakota	6604'

PROD CSG

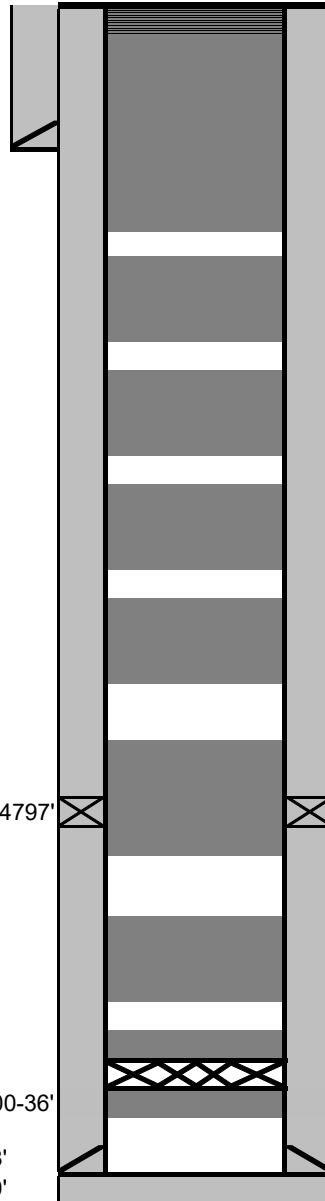
Hole size 6.25"
Csg Size: 4.5"
Wt: 10.5#
Grade: J-55
ID: 4.052"
Depth 6992'
Csg cap ft³: 0.0895
Csq/Csq Ann ft³: 0.2471
Csq/OH cap ft³: 0.1026

TOC: Stg 1 (Circ 30 bbls cmt to surface)

TOC: Stg 2 (Circ 120 bbls cmt to surface)

Dakota Perfs	6700-36'
PBTD	6908'
TD	7000'

DV Tool at 4797'



8-19-2022: Cut off WH. TOC in annulus at surface, 36' in 4.5" casing. Install P&A marker, top off with 14 sx.

8-19-2022: Plug 8: Surface casing shoe to surface: As per NMOCD, monitor BH for 2 hrs. Approval to pump balanced plug of 36 sx from 422' to surface.

8-19-2022: Plug 7: Nacimiento: Mix and spot balanced plug of 13 sx from 1186 to 1019'.

8-19-2022: Ran CBL from 1200' to surface.

8-19-2022: Plug 6: Pictured Cliffs, Fruitland, Ojo Alamo: Mix and spot balanced plug of 52 sx from 2352' to 1684'.

8-19-2022: Plug 5: Chacra: Mix and spot balanced plug of 13 sx from 3201' to 3034'.

8-18-2022: Plug 4: Mesaverde: Mix and spot balanced plug of 13 sx from 3868' to 3700'.

8-18-2022: Plug 3: Mancos: Mix and spot balanced plug of 13 sx from 4846' to 4679'.

8-18-2022: Plug 2: Gallup: Mix and spot balanced plug of 13 sx from 5598' to 5431'.

8-18-2022: Plug 1: Dakota top and perfs: Sting into CR, mix and pump 10 sx through CR, sting out and place 12 sx above CR from 6650' to 6483'.

8-18-2022: Set CR at 6650'. Load and roll hole, PT casing, good test.

All cement used was Class G mixed at 15.8 ppg, yield 1.15 cu ft/sx

Regulatory representative: Jimmie Dobson, BLM and Monica Kuehling, NMOCD via phone

GPS Coordinates: Lat; 36.2780801 N, Long; 107.3355306 W

District I
1625 N. French Dr., Hobbs, NM 88240
Phone:(575) 393-6161 Fax:(575) 393-0720
District II
811 S. First St., Artesia, NM 88210
Phone:(575) 748-1283 Fax:(575) 748-9720
District III
1000 Rio Brazos Rd., Aztec, NM 87410
Phone:(505) 334-6178 Fax:(505) 334-6170
District IV
1220 S. St Francis Dr., Santa Fe, NM 87505
Phone:(505) 476-3470 Fax:(505) 476-3462

State of New Mexico
Energy, Minerals and Natural Resources
Oil Conservation Division
1220 S. St Francis Dr.
Santa Fe, NM 87505

COMMENTS

Action 138884

COMMENTS

Operator: DJR OPERATING, LLC 1 Road 3263 Aztec, NM 87410	OGRID: 371838
	Action Number: 138884
	Action Type: [C-103] Sub. Plugging (C-103P)

COMMENTS

Created By	Comment	Comment Date
mkuehling	well pressures were not recorded daily	12/13/2022

District I
1625 N. French Dr., Hobbs, NM 88240
Phone:(575) 393-6161 Fax:(575) 393-0720
District II
811 S. First St., Artesia, NM 88210
Phone:(575) 748-1283 Fax:(575) 748-9720
District III
1000 Rio Brazos Rd., Aztec, NM 87410
Phone:(505) 334-6178 Fax:(505) 334-6170
District IV
1220 S. St Francis Dr., Santa Fe, NM 87505
Phone:(505) 476-3470 Fax:(505) 476-3462

State of New Mexico
Energy, Minerals and Natural Resources
Oil Conservation Division
1220 S. St Francis Dr.
Santa Fe, NM 87505

CONDITIONS

Action 138884

CONDITIONS

Operator: DJR OPERATING, LLC 1 Road 3263 Aztec, NM 87410	OGRID: 371838
	Action Number: 138884
	Action Type: [C-103] Sub. Plugging (C-103P)

CONDITIONS

Created By	Condition	Condition Date
mkuehling	well plugged 8/19/22	12/13/2022