

District I

1625 N. French Dr., Hobbs, NM 88240
Phone:(575) 393-6161 Fax:(575) 393-0720

District II

811 S. First St., Artesia, NM 88210
Phone:(575) 748-1283 Fax:(575) 748-9720

District III

1000 Rio Brazos Rd., Aztec, NM 87410
Phone:(505) 334-6178 Fax:(505) 334-6170

District IV

1220 S. St Francis Dr., Santa Fe, NM 87505
Phone:(505) 476-3470 Fax:(505) 476-3462

State of New Mexico
Energy, Minerals and Natural Resources
Oil Conservation Division
1220 S. St Francis Dr.
Santa Fe, NM 87505

Form C-101
August 1, 2011

Permit 330670

APPLICATION FOR PERMIT TO DRILL, RE-ENTER, DEEPEN, PLUGBACK, OR ADD A ZONE

1. Operator Name and Address EOG RESOURCES INC P.O. Box 2267 Midland, TX 79702		2. OGRID Number 7377
		3. API Number 30-025-50870
4. Property Code 325384	5. Property Name DURANGO 2 STATE	6. Well No. 303H

7. Surface Location

UL - Lot C	Section 2	Township 25S	Range 33E	Lot Idn C	Feet From 170	N/S Line N	Feet From 2212	E/W Line W	County Lea
---------------	--------------	-----------------	--------------	--------------	------------------	---------------	-------------------	---------------	---------------

8. Proposed Bottom Hole Location

UL - Lot N	Section 2	Township 25S	Range 33E	Lot Idn M	Feet From 100	N/S Line S	Feet From 2190	E/W Line W	County Lea
---------------	--------------	-----------------	--------------	--------------	------------------	---------------	-------------------	---------------	---------------

9. Pool Information

RED HILLS;LOWER BONE SPRING	51020
-----------------------------	-------

Additional Well Information

11. Work Type New Well	12. Well Type OIL	13. Cable/Rotary	14. Lease Type State	15. Ground Level Elevation 3491
16. Multiple N	17. Proposed Depth 15228	18. Formation Bone Spring	19. Contractor	20. Spud Date 1/5/2023
Depth to Ground water		Distance from nearest fresh water well		Distance to nearest surface water

☒ We will be using a closed-loop system in lieu of lined pits

21. Proposed Casing and Cement Program

Type	Hole Size	Casing Size	Casing Weight/ft	Setting Depth	Sacks of Cement	Estimated TOC
Surf	16	13.375	54.5	1290	450	0
Int1	11	9.625	40	5071	520	0
Int1	11	9.625	40	4001	590	0
Prod	6.75	5.5	17	15228	870	4570

Casing/Cement Program: Additional Comments

EOG respectfully requests the option to use the casing and cement program described in Design B of the drill plan. The NMOCD will be notified of EOG's election at spud.
--

22. Proposed Blowout Prevention Program

Type	Working Pressure	Test Pressure	Manufacturer
Double Ram	5000	3000	

23. I hereby certify that the information given above is true and complete to the best of my knowledge and belief. I further certify I have complied with 19.15.14.9 (A) NMAC <input checked="" type="checkbox"/> and/or 19.15.14.9 (B) NMAC <input checked="" type="checkbox"/> if applicable.	OIL CONSERVATION DIVISION	
Signature:		
Printed Name: Electronically filed by Kay Maddox	Approved By: Paul F Kautz	
Title: Regulatory Agent	Title: Geologist	
Email Address: kay_maddox@eogresources.com	Approved Date: 12/16/2022	Expiration Date: 12/16/2024
Date: 12/14/2022	Phone: 432-686-3658	Conditions of Approval Attached

District I
1625 N. French Dr., Hobbs, NM 88240
Phone: (575) 393-6161 Fax: (575) 393-0720
District II
811 S. First St., Artesia, NM 88210
Phone: (575) 748-1283 Fax: (575) 748-9720
District III
1000 Rio Brazos Road, Aztec, NM 87410
Phone: (505) 334-6178 Fax: (505) 334-6170
District IV
1220 S. St. Francis Dr., Santa Fe, NM 87505
Phone: (505) 476-3460 Fax: (505) 476-3462

State of New Mexico
Energy, Minerals & Natural Resources
Department
OIL CONSERVATION DIVISION
1220 South St. Francis Dr.
Santa Fe, NM 87505

FORM C-102

Revised August 1, 2011

Submit one copy to appropriate

District Office

☐ AMENDED REPORT

WELL LOCATION AND ACREAGE DEDICATION PLAT

¹ API Number 30-025-50870	² Pool Code 51020	³ Pool Name Red Hills; Lower Bone Spring
⁴ Property Code 325384	⁵ Property Name DURANGO 2 STATE	⁶ Well Number 303H
⁷ OGRID No. 7377	⁸ Operator Name EOG RESOURCES, INC.	⁹ Elevation 3491'

¹⁰Surface Location

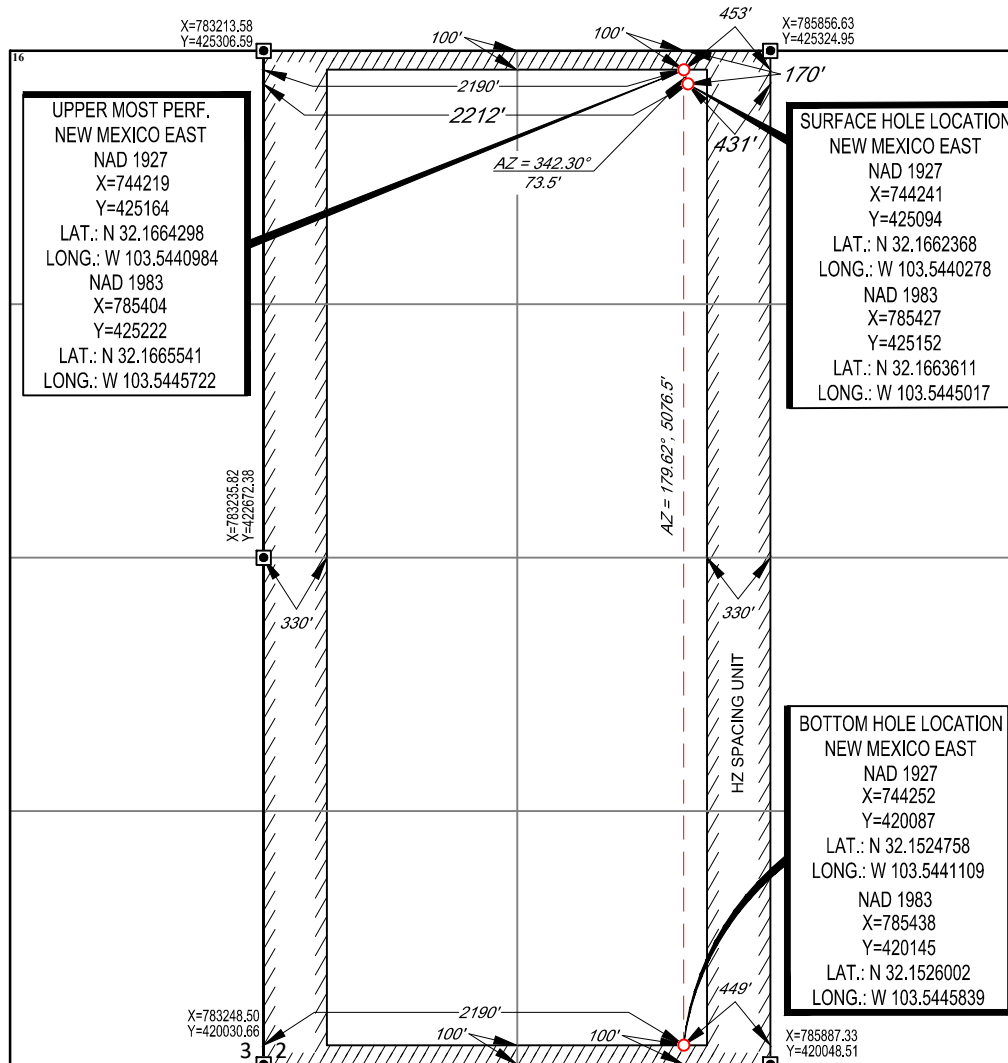
UL or lot no.	Section	Township	Range	Lot Idn	Feet from the	North/South line	Feet from the	East/West line	County
3	2	25-S	33-E	-	170'	NORTH	2212'	WEST	LEA

¹¹Bottom Hole Location If Different From Surface

UL or lot no.	Section	Township	Range	Lot Idn	Feet from the	North/South line	Feet from the	East/West line	County
N	2	25-S	33-E	-	100'	SOUTH	2190'	WEST	LEA

¹² Dedicated Acres 319.79	¹³ Joint or Infill	¹⁴ Consolidation Code	¹⁵ Order No.
--	-------------------------------	----------------------------------	-------------------------

No allowable will be assigned to this completion until all interests have been consolidated or a non-standard unit has been approved by the division.

¹⁷OPERATOR CERTIFICATION

I hereby certify that the information contained herein is true and complete to the best of my knowledge and belief, and that this organization either owns a working interest or unleased mineral interest in the land including the proposed bottom hole location or has a right to drill this well at this location pursuant to a contract with an owner of such a mineral or working interest, or to a voluntary pooling agreement or a compulsory pooling order heretofore entered by the division.

Star L. Harrell 12/14/2022
Signature Date

Star L Harrell

Printed Name

star_harrell@eogresources.com

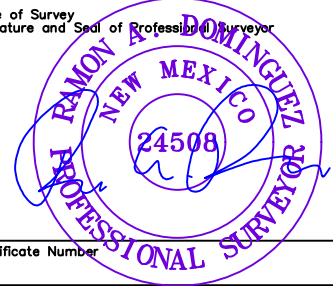
E-mail Address

¹⁸SURVEYOR CERTIFICATION

I hereby certify that the well location shown on this plat was plotted from field notes of actual surveys made by me or under my supervision, and that the same is true to the best of my belief.

12/08/2022

Date of Survey
Signature and Seal of Professional Surveyor



Certificate Number

District I

1625 N. French Dr., Hobbs, NM 88240
 Phone:(575) 393-6161 Fax:(575) 393-0720

District II

811 S. First St., Artesia, NM 88210
 Phone:(575) 748-1283 Fax:(575) 748-9720

District III

1000 Rio Brazos Rd., Aztec, NM 87410
 Phone:(505) 334-6178 Fax:(505) 334-6170

District IV

1220 S. St Francis Dr., Santa Fe, NM 87505
 Phone:(505) 476-3470 Fax:(505) 476-3462

State of New Mexico
Energy, Minerals and Natural Resources
Oil Conservation Division
1220 S. St Francis Dr.
Santa Fe, NM 87505

Form APD Conditions

Permit 330670

PERMIT CONDITIONS OF APPROVAL

Operator Name and Address: EOG RESOURCES INC [7377] P.O. Box 2267 Midland, TX 79702	API Number: 30-025-50870
	Well: DURANGO 2 STATE #303H

OCD Reviewer	Condition
pkautz	Notify OCD 24 hours prior to casing & cement
pkautz	Will require a File As Drilled C-102 and a Directional Survey with the C-104
pkautz	Once the well is spud, to prevent ground water contamination through whole or partial conduits from the surface, the operator shall drill without interruption through the fresh water zone or zones and shall immediately set in cement the water protection string
pkautz	Oil base muds are not to be used until fresh water zones are cased and cemented providing isolation from the oil or diesel. This includes synthetic oils. Oil based mud, drilling fluids and solids must be contained in a steel closed loop system
pkautz	Cement is required to circulate on both surface and intermediate1 strings of casing
pkautz	The Operator is to notify NMOCD by sundry (Form C-103) within ten (10) days of the well being spud



Durango 2 State #303H
Lea County, New Mexico
Proposed Wellbore
Design A

170' FNL
2212' FWL
Section 2
T-25-S, R-33-E

KB: 3516'
GL: 3491'

API: 30-025-*****

Bit Size: 16"
13-3/8", 54.5#, J-55, STC
@ 0' - 1,290'

Bit Size: 11"
9-5/8", 40.#, J-55, LTC
@ 0' - 4,000'
9-5/8", 40.#, HCK-55, LTC
@ 4,000' - 5,070'

Bit Size: 6-3/4"
5-1/2", 17.#, HCP-110, LTC
@ 0' - 15,228'

TOC: 4,570'

KOP: 9,828' MD, 9,828' TVD
EOC: 10,578' MD, 10,305' TVD

Lateral: 15,228' MD, 10,305' TVD
BH Location: 100' FSL & 2190' FWL
Sec. 2
T-25-S R-33-E



Durango 2 State #303H
Lea County, New Mexico
Proposed Wellbore
Design B

170' FNL
2212' FWL
Section 2
T-25-S, R-33-E

KB: 3516'
GL: 3491'

API: 30-025-*****

Bit Size: 13-1/2"
10-3/4", 40.5#, J-55, STC
@ 0' - 1,290'

Bit Size: 9-7/8"
8-5/8", 32.#, J-55, BTC-SC
@ 0' - 4,000'
8-5/8", 32.#, P110-EC, BTC-SC
@ 4,000' - 5,070'

Bit Size: 6-3/4"
5-1/2", 17.#, HCP-110, LTC
@ 0' - 15,228'

KOP: 9,828' MD, 9,828' TVD
EOC: 10,578' MD, 10,305' TVD

TOC: 4,570'

Lateral: 15,228' MD, 10,305' TVD
BH Location: 100' FSL & 2190' FWL
Sec. 2
T-25-S R-33-E

**Durango 2 State #303H****Permit Information:**

Well Name: Durango 2 State #303H

Location:

SHL: 170' FNL & 2212' FWL, Section 2, T-25-S, R-33-E, Lea Co., N.M.

BHL: 100' FSL & 2190' FWL, Section 2, T-25-S, R-33-E, Lea Co., N.M.

Design A**Casing Program:**

Hole Size	Interval MD		Interval TVD		Csg OD	Weight	Grade	Conn
	From (ft)	To (ft)	From (ft)	To (ft)				
16"	0	1,290	0	1,290	13-3/8"	54.5#	J-55	STC
11"	0	4,001	0	4,000	9-5/8"	40#	J-55	LTC
11"	4,001	5,071	4,000	5,070	9-5/8"	40#	HCK-55	LTC
6-3/4"	0	15,228	0	10,305	5-1/2"	17#	HCP-110	LTC

Cement Program:

Depth	No. Sacks	Wt. ppg	Yld Ft3/sk	Slurry Description
1,290'	370	13.5	1.73	Class C + 4.0% Bentonite + 0.6% CD-32 + 0.5% CaCl ₂ + 0.25 lb/sk Cello-Flake (TOC @ Surface)
	80	14.8	1.34	Class C + 0.6% FL-62 + 0.25 lb/sk Cello-Flake + 0.2% Sodium Metasilicate
4,000'	520	14.2	1.11	Tail: Class C + 10% NaCl + 6% Bentonite Gel + 3% MagOx (TOC @ Surface)
	590	14.8	1.5	Lead: Class C + 3% CaCl ₂ + 3% Microbond (TOC @ 4,056')
15,228'	480	11.0	3.21	Lead: Class C + 3% CaCl ₂ + 3% Microbond (TOC @ 4,570')
	390	13.2	1.52	Tail: Class H + 5% NEX-020 + 0.2% NAC-102 + 0.15% NAS-725 + 0.5% NFL-549 + 0.2% NFP-703 + 1% NBE-737 + 0.3% NRT-241

Mud Program:

Depth	Type	Weight (ppg)	Viscosity	Water Loss
0 – 1,290'	Fresh - Gel	8.6-8.8	28-34	N/c
1,290' – 5,070'	Brine	8.6-8.8	28-34	N/c
5,070' – 15,228' Lateral	Oil Base	8.8-9.5	58-68	N/c - 6



Durango 2 State #303H

Design B**CASING PROGRAM**

Hole Size	Interval MD		Interval TVD		Csg OD	Weight	Grade	Conn
	From (ft)	To (ft)	From (ft)	To (ft)				
13-1/2"	0	1,290	0	1,290	10-3/4"	40.5#	J-55	STC
9-7/8"	0	4,001	0	4,000	8-5/8"	32#	J-55	BTC-SC
9-7/8"	4,001	5,071	4,000	5,070	8-5/8"	32#	P110-EC	BTC-SC
6-3/4"	0	15,228	0	10,305	5-1/2"	17#	HCP-110	LTC

Cementing Program:

Depth	No. Sacks	Wt. ppg	Yld Ft3/sk	Slurry Description
1,290'	360	13.5	1.73	Class C + 4.0% Bentonite + 0.6% CD-32 + 0.5% CaCl2 + 0.25 lb/sk Cello-Flake (TOC @ Surface)
	70	14.8	1.34	Class C + 0.6% FL-62 + 0.25 lb/sk Cello-Flake + 0.2% Sodium Metasilicate
4,000'	290	14.2	1.11	Tail: Class C + 10% NaCl + 6% Bentonite Gel + 3% MagOx (TOC @ Surface)
	1000	14.8	1.5	Lead: Class C + 3% CaCl2 + 3% Microbond (TOC @ 4,056')
15,228'	310	11.0	3.21	Lead: Class C + 3% CaCl2 + 3% Microbond (TOC @ 4,570')
	580	13.2	1.52	Tail: Class H + 5% NEX-020 + 0.2% NAC-102 + 0.15% NAS-725 + 0.5% NFL-549 + 0.2% NFP-703 + 1% NBE-737 + 0.3% NRT-241

Mud Program:

Depth	Type	Weight (ppg)	Viscosity	Water Loss
0 – 1,290'	Fresh - Gel	8.6-8.8	28-34	N/c
1,290' – 5,070'	Brine	8.6-8.8	28-34	N/c
5,070' – 15,228' Lateral	Oil Base	8.8-9.5	58-68	N/c - 6

**Durango 2 State #303H****Hydrogen Sulfide Plan Summary**

A. All personnel shall receive proper H₂S training in accordance with Onshore Order III.C.3.a.

B. Briefing Area: two perpendicular areas will be designated by signs and readily accessible.

C. Required Emergency Equipment:

■ Well control equipment

- a. Flare line 150' from wellhead to be ignited by flare gun.
- b. Choke manifold with a remotely operated choke.
- c. Mud/gas separator

■ Protective equipment for essential personnel.

Breathing apparatus:

- a. Rescue Packs (SCBA) — 1 unit shall be placed at each breathing area, 2 shall be stored in the safety trailer.
- b. Work/Escape packs — 4 packs shall be stored on the rig floor with sufficient air hose not to restrict work activity.
- c. Emergency Escape Packs — 4 packs shall be stored in the doghouse for emergency evacuation.

Auxiliary Rescue Equipment:

- a. Stretcher
- b. Two OSHA full body harness
- c. 100 ft 5/8 inch OSHA approved rope
- d. 1-20# class ABC fire extinguisher

■ H₂S detection and monitoring equipment:

The stationary detector with three sensors will be placed in the upper dog house if equipped, set to visually alarm @ 10 ppm and audible @ 14 ppm. Calibrate a minimum of every 30 days or as needed. The sensors will be placed in the following places: Rig floor / Bell nipple / End of flow line or where well bore fluid is being discharged.

(Gas sample tubes will be stored in the safety trailer)

■ Visual warning systems.

- a. One color code condition sign will be placed at the entrance to the site reflecting the possible conditions at the site.
- b. A colored condition flag will be on display, reflecting the current condition at the site at the time.
- c. Two wind socks will be placed in strategic locations, visible from all angles.



Durango 2 State #303H

■ Mud program:

The mud program has been designed to minimize the volume of H₂S circulated to surface. The operator will have the necessary mud products to minimize hazards while drilling in H₂S bearing zones.

■ Metallurgy:

All drill strings, casings, tubing, wellhead, blowout preventer, drilling spool, kill lines, choke manifold and lines, and valves shall be suitable for H₂S service.

■ Communication:

Communication will be via cell phones and land lines where available.



Durango 2 State #303H
Emergency Assistance Telephone List

PUBLIC SAFETY:		911 or
Lea County Sheriff's Department		(575) 396-3611
Rod Coffman		
Fire Department:		
Carlsbad		(575) 885-3125
Artesia		(575) 746-5050
Hospitals:		
Carlsbad		(575) 887-4121
Artesia		(575) 748-3333
Hobbs		(575) 392-1979
Dept. of Public Safety/Carlsbad		(575) 748-9718
Highway Department		(575) 885-3281
New Mexico Oil Conservation		(575) 476-3440
NMOCD Inspection Group - South		(575) 626-0830
U.S. Dept. of Labor		(575) 887-1174
EOG Resources, Inc.		
EOG / Midland	Office	(432) 686-3600
Company Drilling Consultants:		
David Dominique	Cell	(985) 518-5839
Mike Vann	Cell	(817) 980-5507
Drilling Engineer		
Stephen Davis	Cell	(432) 235-9789
Matt Day	Cell	(432) 296-4456
Drilling Manager		
Branden Keener	Office	(432) 686-3752
	Cell	(210) 294-3729
Drilling Superintendent		
Steve Kelly	Office	(432) 686-3706
	Cell	(210) 416-7894
H&P Drilling		
H&P Drilling	Office	(432) 563-5757
H&P 651 Drilling Rig	Rig	(903) 509-7131
Tool Pusher:		
Johnathan Craig	Cell	(817) 760-6374
Brad Garrett		
Safety:		
Brian Chandler (HSE Manager)	Office	(432) 686-3695
	Cell	(817) 239-0251



Midland

Lea County, NM (NAD 83 NME)

Durango 2 State

#303H

OH

Plan: Plan #1

Standard Planning Report

14 December, 2022





Planning Report



Database:	PEDM	Local Co-ordinate Reference:	Well #303H
Company:	Midland	TVD Reference:	kb = 26' @ 3523.0usft
Project:	Lea County, NM (NAD 83 NME)	MD Reference:	kb = 26' @ 3523.0usft
Site:	Durango 2 State	North Reference:	Grid
Well:	#303H	Survey Calculation Method:	Minimum Curvature
Wellbore:	OH		
Design:	Plan #1		

Project	Lea County, NM (NAD 83 NME)		
Map System:	US State Plane 1983	System Datum:	Mean Sea Level
Geo Datum:	North American Datum 1983		
Map Zone:	New Mexico Eastern Zone		

Site	Durango 2 State		
Site Position:		Northing:	425,051.00 usft
From:	Map	Easting:	783,515.00 usft
Position Uncertainty:	0.0 usft	Slot Radius:	13-3/16 "
		Latitude:	32° 9' 58.041 N
		Longitude:	103° 33' 2.454 W

Well	#303H		
Well Position	+N/-S	0.0 usft	Northing: 425,152.00 usft
	+E/-W	0.0 usft	Easting: 785,427.00 usft
Position Uncertainty	0.0 usft	Wellhead Elevation:	usft
Grid Convergence:	0.42 °	Ground Level:	3,491.0 usft

Wellbore	OH				
Magnetics	Model Name	Sample Date	Declination (°)	Dip Angle (°)	Field Strength (nT)
	IGRF2020	12/13/2022	6.35	59.80	47,306.10731856

Design	Plan #1				
Audit Notes:					
Version:	Phase:	PLAN	Tie On Depth:	0.0	
Vertical Section:	Depth From (TVD) (usft)	+N/-S (usft)	+E/-W (usft)	Direction (°)	
	0.0	0.0	0.0	179.87	

Plan Survey Tool Program	Date	12/14/2022			
Depth From (usft)	Depth To (usft)	Survey (Wellbore)	Tool Name	Remarks	
1	0.0	15,228.0 Plan #1 (OH)	EOG MWD+IFR1		
			MWD + IFR1		

Plan Sections										
Measured Depth (usft)	Inclination (°)	Azimuth (°)	Vertical Depth (usft)	+N/-S (usft)	+E/-W (usft)	Dogleg Rate (°/100usft)	Build Rate (°/100usft)	Turn Rate (°/100usft)	TFO (°)	Target
0.0	0.00	0.00	0.0	0.0	0.0	0.00	0.00	0.00	0.00	
1,350.0	0.00	0.00	1,350.0	0.0	0.0	0.00	0.00	0.00	0.00	
1,391.5	0.83	349.15	1,391.5	0.3	-0.1	2.00	2.00	0.00	349.15	
9,786.9	0.83	349.15	9,786.0	119.7	-22.9	0.00	0.00	0.00	0.00	
9,828.4	0.00	0.00	9,827.5	120.0	-23.0	2.00	-2.00	0.00	180.00	KOP(Durango 2 State
10,578.4	90.00	179.62	10,305.0	-357.5	-19.8	12.00	12.00	23.95	179.62	
15,228.0	90.00	179.62	10,305.0	-5,007.0	11.0	0.00	0.00	0.00	0.00	PBHL(Durango 2 Stat



Planning Report



Database:	PEDM	Local Co-ordinate Reference:	Well #303H
Company:	Midland	TVD Reference:	kb = 26' @ 3523.0usft
Project:	Lea County, NM (NAD 83 NME)	MD Reference:	kb = 26' @ 3523.0usft
Site:	Durango 2 State	North Reference:	Grid
Well:	#303H	Survey Calculation Method:	Minimum Curvature
Wellbore:	OH		
Design:	Plan #1		

Planned Survey									
Measured Depth (usft)	Inclination (°)	Azimuth (°)	Vertical Depth (usft)	+N/-S (usft)	+E/-W (usft)	Vertical Section (usft)	Dogleg Rate (°/100usft)	Build Rate (°/100usft)	Turn Rate (°/100usft)
0.0	0.00	0.00	0.0	0.0	0.0	0.0	0.00	0.00	0.00
100.0	0.00	0.00	100.0	0.0	0.0	0.0	0.00	0.00	0.00
200.0	0.00	0.00	200.0	0.0	0.0	0.0	0.00	0.00	0.00
300.0	0.00	0.00	300.0	0.0	0.0	0.0	0.00	0.00	0.00
400.0	0.00	0.00	400.0	0.0	0.0	0.0	0.00	0.00	0.00
500.0	0.00	0.00	500.0	0.0	0.0	0.0	0.00	0.00	0.00
600.0	0.00	0.00	600.0	0.0	0.0	0.0	0.00	0.00	0.00
700.0	0.00	0.00	700.0	0.0	0.0	0.0	0.00	0.00	0.00
800.0	0.00	0.00	800.0	0.0	0.0	0.0	0.00	0.00	0.00
900.0	0.00	0.00	900.0	0.0	0.0	0.0	0.00	0.00	0.00
1,000.0	0.00	0.00	1,000.0	0.0	0.0	0.0	0.00	0.00	0.00
1,100.0	0.00	0.00	1,100.0	0.0	0.0	0.0	0.00	0.00	0.00
1,200.0	0.00	0.00	1,200.0	0.0	0.0	0.0	0.00	0.00	0.00
1,300.0	0.00	0.00	1,300.0	0.0	0.0	0.0	0.00	0.00	0.00
1,350.0	0.00	0.00	1,350.0	0.0	0.0	0.0	0.00	0.00	0.00
1,391.5	0.83	349.15	1,391.5	0.3	-0.1	-0.3	2.00	2.00	0.00
1,400.0	0.83	349.15	1,400.0	0.4	-0.1	-0.4	0.00	0.00	0.00
1,500.0	0.83	349.15	1,500.0	1.8	-0.4	-1.8	0.00	0.00	0.00
1,600.0	0.83	349.15	1,600.0	3.3	-0.6	-3.3	0.00	0.00	0.00
1,700.0	0.83	349.15	1,700.0	4.7	-0.9	-4.7	0.00	0.00	0.00
1,800.0	0.83	349.15	1,800.0	6.1	-1.2	-6.1	0.00	0.00	0.00
1,900.0	0.83	349.15	1,899.9	7.5	-1.4	-7.5	0.00	0.00	0.00
2,000.0	0.83	349.15	1,999.9	9.0	-1.7	-9.0	0.00	0.00	0.00
2,100.0	0.83	349.15	2,099.9	10.4	-2.0	-10.4	0.00	0.00	0.00
2,200.0	0.83	349.15	2,199.9	11.8	-2.3	-11.8	0.00	0.00	0.00
2,300.0	0.83	349.15	2,299.9	13.2	-2.5	-13.2	0.00	0.00	0.00
2,400.0	0.83	349.15	2,399.9	14.6	-2.8	-14.6	0.00	0.00	0.00
2,500.0	0.83	349.15	2,499.9	16.1	-3.1	-16.1	0.00	0.00	0.00
2,600.0	0.83	349.15	2,599.9	17.5	-3.4	-17.5	0.00	0.00	0.00
2,700.0	0.83	349.15	2,699.9	18.9	-3.6	-18.9	0.00	0.00	0.00
2,800.0	0.83	349.15	2,799.9	20.3	-3.9	-20.3	0.00	0.00	0.00
2,900.0	0.83	349.15	2,899.8	21.8	-4.2	-21.8	0.00	0.00	0.00
3,000.0	0.83	349.15	2,999.8	23.2	-4.4	-23.2	0.00	0.00	0.00
3,100.0	0.83	349.15	3,099.8	24.6	-4.7	-24.6	0.00	0.00	0.00
3,200.0	0.83	349.15	3,199.8	26.0	-5.0	-26.0	0.00	0.00	0.00
3,300.0	0.83	349.15	3,299.8	27.4	-5.3	-27.5	0.00	0.00	0.00
3,400.0	0.83	349.15	3,399.8	28.9	-5.5	-28.9	0.00	0.00	0.00
3,500.0	0.83	349.15	3,499.8	30.3	-5.8	-30.3	0.00	0.00	0.00
3,600.0	0.83	349.15	3,599.8	31.7	-6.1	-31.7	0.00	0.00	0.00
3,700.0	0.83	349.15	3,699.8	33.1	-6.3	-33.1	0.00	0.00	0.00
3,800.0	0.83	349.15	3,799.7	34.6	-6.6	-34.6	0.00	0.00	0.00
3,900.0	0.83	349.15	3,899.7	36.0	-6.9	-36.0	0.00	0.00	0.00
4,000.0	0.83	349.15	3,999.7	37.4	-7.2	-37.4	0.00	0.00	0.00
4,100.0	0.83	349.15	4,099.7	38.8	-7.4	-38.8	0.00	0.00	0.00
4,200.0	0.83	349.15	4,199.7	40.2	-7.7	-40.3	0.00	0.00	0.00
4,300.0	0.83	349.15	4,299.7	41.7	-8.0	-41.7	0.00	0.00	0.00
4,400.0	0.83	349.15	4,399.7	43.1	-8.3	-43.1	0.00	0.00	0.00
4,500.0	0.83	349.15	4,499.7	44.5	-8.5	-44.5	0.00	0.00	0.00
4,600.0	0.83	349.15	4,599.7	45.9	-8.8	-45.9	0.00	0.00	0.00
4,700.0	0.83	349.15	4,699.7	47.4	-9.1	-47.4	0.00	0.00	0.00
4,800.0	0.83	349.15	4,799.6	48.8	-9.3	-48.8	0.00	0.00	0.00
4,900.0	0.83	349.15	4,899.6	50.2	-9.6	-50.2	0.00	0.00	0.00
5,000.0	0.83	349.15	4,999.6	51.6	-9.9	-51.6	0.00	0.00	0.00
5,100.0	0.83	349.15	5,099.6	53.0	-10.2	-53.1	0.00	0.00	0.00



Planning Report



Database:	PEDM	Local Co-ordinate Reference:	Well #303H
Company:	Midland	TVD Reference:	kb = 26' @ 3523.0usft
Project:	Lea County, NM (NAD 83 NME)	MD Reference:	kb = 26' @ 3523.0usft
Site:	Durango 2 State	North Reference:	Grid
Well:	#303H	Survey Calculation Method:	Minimum Curvature
Wellbore:	OH		
Design:	Plan #1		

Planned Survey									
Measured Depth (usft)	Inclination (°)	Azimuth (°)	Vertical Depth (usft)	+N/-S (usft)	+E/-W (usft)	Vertical Section (usft)	Dogleg Rate (°/100usft)	Build Rate (°/100usft)	Turn Rate (°/100usft)
5,200.0	0.83	349.15	5,199.6	54.5	-10.4	-54.5	0.00	0.00	0.00
5,300.0	0.83	349.15	5,299.6	55.9	-10.7	-55.9	0.00	0.00	0.00
5,400.0	0.83	349.15	5,399.6	57.3	-11.0	-57.3	0.00	0.00	0.00
5,500.0	0.83	349.15	5,499.6	58.7	-11.3	-58.8	0.00	0.00	0.00
5,600.0	0.83	349.15	5,599.6	60.2	-11.5	-60.2	0.00	0.00	0.00
5,700.0	0.83	349.15	5,699.5	61.6	-11.8	-61.6	0.00	0.00	0.00
5,800.0	0.83	349.15	5,799.5	63.0	-12.1	-63.0	0.00	0.00	0.00
5,900.0	0.83	349.15	5,899.5	64.4	-12.3	-64.4	0.00	0.00	0.00
6,000.0	0.83	349.15	5,999.5	65.8	-12.6	-65.9	0.00	0.00	0.00
6,100.0	0.83	349.15	6,099.5	67.3	-12.9	-67.3	0.00	0.00	0.00
6,200.0	0.83	349.15	6,199.5	68.7	-13.2	-68.7	0.00	0.00	0.00
6,300.0	0.83	349.15	6,299.5	70.1	-13.4	-70.1	0.00	0.00	0.00
6,400.0	0.83	349.15	6,399.5	71.5	-13.7	-71.6	0.00	0.00	0.00
6,500.0	0.83	349.15	6,499.5	73.0	-14.0	-73.0	0.00	0.00	0.00
6,600.0	0.83	349.15	6,599.5	74.4	-14.3	-74.4	0.00	0.00	0.00
6,700.0	0.83	349.15	6,699.4	75.8	-14.5	-75.8	0.00	0.00	0.00
6,800.0	0.83	349.15	6,799.4	77.2	-14.8	-77.3	0.00	0.00	0.00
6,900.0	0.83	349.15	6,899.4	78.6	-15.1	-78.7	0.00	0.00	0.00
7,000.0	0.83	349.15	6,999.4	80.1	-15.3	-80.1	0.00	0.00	0.00
7,100.0	0.83	349.15	7,099.4	81.5	-15.6	-81.5	0.00	0.00	0.00
7,200.0	0.83	349.15	7,199.4	82.9	-15.9	-82.9	0.00	0.00	0.00
7,300.0	0.83	349.15	7,299.4	84.3	-16.2	-84.4	0.00	0.00	0.00
7,400.0	0.83	349.15	7,399.4	85.8	-16.4	-85.8	0.00	0.00	0.00
7,500.0	0.83	349.15	7,499.4	87.2	-16.7	-87.2	0.00	0.00	0.00
7,600.0	0.83	349.15	7,599.3	88.6	-17.0	-88.6	0.00	0.00	0.00
7,700.0	0.83	349.15	7,699.3	90.0	-17.3	-90.1	0.00	0.00	0.00
7,800.0	0.83	349.15	7,799.3	91.4	-17.5	-91.5	0.00	0.00	0.00
7,900.0	0.83	349.15	7,899.3	92.9	-17.8	-92.9	0.00	0.00	0.00
8,000.0	0.83	349.15	7,999.3	94.3	-18.1	-94.3	0.00	0.00	0.00
8,100.0	0.83	349.15	8,099.3	95.7	-18.3	-95.8	0.00	0.00	0.00
8,200.0	0.83	349.15	8,199.3	97.1	-18.6	-97.2	0.00	0.00	0.00
8,300.0	0.83	349.15	8,299.3	98.6	-18.9	-98.6	0.00	0.00	0.00
8,400.0	0.83	349.15	8,399.3	100.0	-19.2	-100.0	0.00	0.00	0.00
8,500.0	0.83	349.15	8,499.3	101.4	-19.4	-101.4	0.00	0.00	0.00
8,600.0	0.83	349.15	8,599.2	102.8	-19.7	-102.9	0.00	0.00	0.00
8,700.0	0.83	349.15	8,699.2	104.2	-20.0	-104.3	0.00	0.00	0.00
8,800.0	0.83	349.15	8,799.2	105.7	-20.3	-105.7	0.00	0.00	0.00
8,900.0	0.83	349.15	8,899.2	107.1	-20.5	-107.1	0.00	0.00	0.00
9,000.0	0.83	349.15	8,999.2	108.5	-20.8	-108.6	0.00	0.00	0.00
9,100.0	0.83	349.15	9,099.2	109.9	-21.1	-110.0	0.00	0.00	0.00
9,200.0	0.83	349.15	9,199.2	111.4	-21.3	-111.4	0.00	0.00	0.00
9,300.0	0.83	349.15	9,299.2	112.8	-21.6	-112.8	0.00	0.00	0.00
9,400.0	0.83	349.15	9,399.2	114.2	-21.9	-114.2	0.00	0.00	0.00
9,500.0	0.83	349.15	9,499.1	115.6	-22.2	-115.7	0.00	0.00	0.00
9,600.0	0.83	349.15	9,599.1	117.0	-22.4	-117.1	0.00	0.00	0.00
9,700.0	0.83	349.15	9,699.1	118.5	-22.7	-118.5	0.00	0.00	0.00
9,786.9	0.83	349.15	9,786.0	119.7	-22.9	-119.8	0.00	0.00	0.00
9,800.0	0.57	349.15	9,799.1	119.9	-23.0	-119.9	2.00	-2.00	0.00
9,828.4	0.00	0.00	9,827.5	120.0	-23.0	-120.1	2.00	-2.00	0.00
9,850.0	2.59	179.62	9,849.1	119.5	-23.0	-119.6	12.00	12.00	0.00
9,875.0	5.59	179.62	9,874.0	117.7	-23.0	-117.8	12.00	12.00	0.00
9,900.0	8.59	179.62	9,898.8	114.6	-23.0	-114.7	12.00	12.00	0.00
9,925.0	11.59	179.62	9,923.5	110.3	-22.9	-110.3	12.00	12.00	0.00
9,950.0	14.59	179.62	9,947.8	104.6	-22.9	-104.6	12.00	12.00	0.00



Planning Report



Database:	PEDM	Local Co-ordinate Reference:	Well #303H
Company:	Midland	TVD Reference:	kb = 26' @ 3523.0usft
Project:	Lea County, NM (NAD 83 NME)	MD Reference:	kb = 26' @ 3523.0usft
Site:	Durango 2 State	North Reference:	Grid
Well:	#303H	Survey Calculation Method:	Minimum Curvature
Wellbore:	OH		
Design:	Plan #1		

Planned Survey									
Measured Depth (usft)	Inclination (°)	Azimuth (°)	Vertical Depth (usft)	+N/-S (usft)	+E/-W (usft)	Vertical Section (usft)	Dogleg Rate (°/100usft)	Build Rate (°/100usft)	Turn Rate (°/100usft)
9,975.0	17.59	179.62	9,971.8	97.7	-22.9	-97.7	12.00	12.00	0.00
10,000.0	20.59	179.62	9,995.4	89.5	-22.8	-89.5	12.00	12.00	0.00
10,025.0	23.59	179.62	10,018.6	80.1	-22.7	-80.1	12.00	12.00	0.00
10,050.0	26.59	179.62	10,041.2	69.5	-22.7	-69.5	12.00	12.00	0.00
10,075.0	29.59	179.62	10,063.3	57.7	-22.6	-57.8	12.00	12.00	0.00
10,100.0	32.59	179.62	10,084.7	44.8	-22.5	-44.9	12.00	12.00	0.00
10,125.0	35.59	179.62	10,105.4	30.8	-22.4	-30.8	12.00	12.00	0.00
10,150.0	38.59	179.62	10,125.3	15.7	-22.3	-15.8	12.00	12.00	0.00
10,175.0	41.59	179.62	10,144.5	-0.4	-22.2	0.3	12.00	12.00	0.00
10,200.0	44.59	179.62	10,162.7	-17.5	-22.1	17.4	12.00	12.00	0.00
10,225.0	47.59	179.62	10,180.1	-35.5	-22.0	35.4	12.00	12.00	0.00
10,250.0	50.59	179.62	10,196.4	-54.4	-21.8	54.3	12.00	12.00	0.00
10,275.0	53.59	179.62	10,211.8	-74.1	-21.7	74.0	12.00	12.00	0.00
10,300.0	56.59	179.62	10,226.1	-94.6	-21.6	94.5	12.00	12.00	0.00
10,325.0	59.59	179.62	10,239.3	-115.8	-21.4	115.8	12.00	12.00	0.00
10,350.0	62.59	179.62	10,251.4	-137.7	-21.3	137.6	12.00	12.00	0.00
10,375.0	65.59	179.62	10,262.3	-160.2	-21.1	160.1	12.00	12.00	0.00
10,400.0	68.59	179.62	10,272.0	-183.2	-21.0	183.1	12.00	12.00	0.00
10,425.0	71.59	179.62	10,280.5	-206.7	-20.8	206.7	12.00	12.00	0.00
10,450.0	74.59	179.62	10,287.8	-230.6	-20.7	230.6	12.00	12.00	0.00
10,475.0	77.59	179.62	10,293.8	-254.9	-20.5	254.8	12.00	12.00	0.00
10,500.0	80.59	179.62	10,298.5	-279.4	-20.4	279.4	12.00	12.00	0.00
10,525.0	83.59	179.62	10,302.0	-304.2	-20.2	304.1	12.00	12.00	0.00
10,550.0	86.59	179.62	10,304.1	-329.1	-20.0	329.0	12.00	12.00	0.00
10,575.0	89.59	179.62	10,305.0	-354.1	-19.9	354.0	12.00	12.00	0.00
10,578.4	90.00	179.62	10,305.0	-357.5	-19.8	357.4	12.00	12.00	0.00
10,600.0	90.00	179.62	10,305.0	-379.1	-19.7	379.0	0.00	0.00	0.00
10,700.0	90.00	179.62	10,305.0	-479.1	-19.0	479.0	0.00	0.00	0.00
10,800.0	90.00	179.62	10,305.0	-579.1	-18.4	579.0	0.00	0.00	0.00
10,900.0	90.00	179.62	10,305.0	-679.1	-17.7	679.0	0.00	0.00	0.00
11,000.0	90.00	179.62	10,305.0	-779.1	-17.0	779.0	0.00	0.00	0.00
11,100.0	90.00	179.62	10,305.0	-879.1	-16.4	879.0	0.00	0.00	0.00
11,200.0	90.00	179.62	10,305.0	-979.1	-15.7	979.0	0.00	0.00	0.00
11,300.0	90.00	179.62	10,305.0	-1,079.1	-15.0	1,079.0	0.00	0.00	0.00
11,400.0	90.00	179.62	10,305.0	-1,179.1	-14.4	1,179.0	0.00	0.00	0.00
11,500.0	90.00	179.62	10,305.0	-1,279.1	-13.7	1,279.0	0.00	0.00	0.00
11,600.0	90.00	179.62	10,305.0	-1,379.0	-13.1	1,379.0	0.00	0.00	0.00
11,700.0	90.00	179.62	10,305.0	-1,479.0	-12.4	1,479.0	0.00	0.00	0.00
11,800.0	90.00	179.62	10,305.0	-1,579.0	-11.7	1,579.0	0.00	0.00	0.00
11,900.0	90.00	179.62	10,305.0	-1,679.0	-11.1	1,679.0	0.00	0.00	0.00
12,000.0	90.00	179.62	10,305.0	-1,779.0	-10.4	1,779.0	0.00	0.00	0.00
12,100.0	90.00	179.62	10,305.0	-1,879.0	-9.7	1,879.0	0.00	0.00	0.00
12,200.0	90.00	179.62	10,305.0	-1,979.0	-9.1	1,979.0	0.00	0.00	0.00
12,300.0	90.00	179.62	10,305.0	-2,079.0	-8.4	2,079.0	0.00	0.00	0.00
12,400.0	90.00	179.62	10,305.0	-2,179.0	-7.8	2,179.0	0.00	0.00	0.00
12,500.0	90.00	179.62	10,305.0	-2,279.0	-7.1	2,279.0	0.00	0.00	0.00
12,600.0	90.00	179.62	10,305.0	-2,379.0	-6.4	2,379.0	0.00	0.00	0.00
12,700.0	90.00	179.62	10,305.0	-2,479.0	-5.8	2,479.0	0.00	0.00	0.00
12,800.0	90.00	179.62	10,305.0	-2,579.0	-5.1	2,579.0	0.00	0.00	0.00
12,900.0	90.00	179.62	10,305.0	-2,679.0	-4.4	2,679.0	0.00	0.00	0.00
13,000.0	90.00	179.62	10,305.0	-2,779.0	-3.8	2,779.0	0.00	0.00	0.00
13,100.0	90.00	179.62	10,305.0	-2,879.0	-3.1	2,879.0	0.00	0.00	0.00
13,200.0	90.00	179.62	10,305.0	-2,979.0	-2.4	2,979.0	0.00	0.00	0.00
13,300.0	90.00	179.62	10,305.0	-3,079.0	-1.8	3,079.0	0.00	0.00	0.00



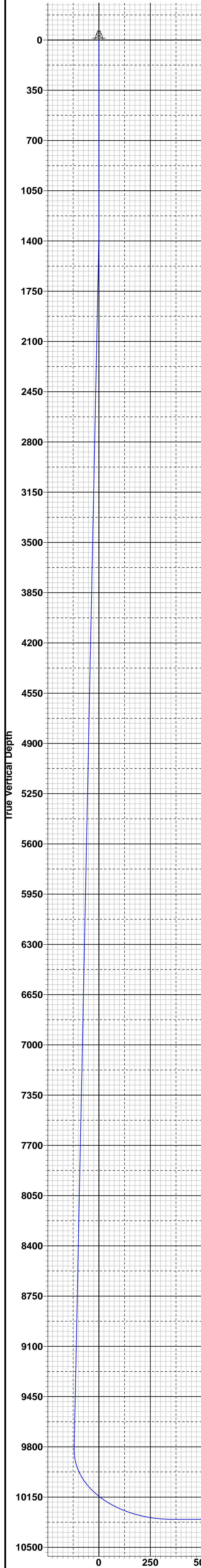
Planning Report



Database:	PEDM	Local Co-ordinate Reference:	Well #303H
Company:	Midland	TVD Reference:	kb = 26' @ 3523.0usft
Project:	Lea County, NM (NAD 83 NME)	MD Reference:	kb = 26' @ 3523.0usft
Site:	Durango 2 State	North Reference:	Grid
Well:	#303H	Survey Calculation Method:	Minimum Curvature
Wellbore:	OH		
Design:	Plan #1		

Planned Survey										
Measured Depth (usft)	Inclination (°)	Azimuth (°)	Vertical Depth (usft)	+N/-S (usft)	+E/-W (usft)	Vertical Section (usft)	Dogleg Rate (°/100usft)	Build Rate (°/100usft)	Turn Rate (°/100usft)	
13,400.0	90.00	179.62	10,305.0	-3,179.0	-1.1	3,179.0	0.00	0.00	0.00	
13,500.0	90.00	179.62	10,305.0	-3,279.0	-0.5	3,279.0	0.00	0.00	0.00	
13,600.0	90.00	179.62	10,305.0	-3,379.0	0.2	3,379.0	0.00	0.00	0.00	
13,700.0	90.00	179.62	10,305.0	-3,479.0	0.9	3,479.0	0.00	0.00	0.00	
13,800.0	90.00	179.62	10,305.0	-3,579.0	1.5	3,579.0	0.00	0.00	0.00	
13,900.0	90.00	179.62	10,305.0	-3,679.0	2.2	3,679.0	0.00	0.00	0.00	
14,000.0	90.00	179.62	10,305.0	-3,779.0	2.9	3,779.0	0.00	0.00	0.00	
14,100.0	90.00	179.62	10,305.0	-3,879.0	3.5	3,879.0	0.00	0.00	0.00	
14,200.0	90.00	179.62	10,305.0	-3,979.0	4.2	3,979.0	0.00	0.00	0.00	
14,300.0	90.00	179.62	10,305.0	-4,079.0	4.8	4,079.0	0.00	0.00	0.00	
14,400.0	90.00	179.62	10,305.0	-4,179.0	5.5	4,179.0	0.00	0.00	0.00	
14,500.0	90.00	179.62	10,305.0	-4,279.0	6.2	4,279.0	0.00	0.00	0.00	
14,600.0	90.00	179.62	10,305.0	-4,379.0	6.8	4,379.0	0.00	0.00	0.00	
14,700.0	90.00	179.62	10,305.0	-4,479.0	7.5	4,479.0	0.00	0.00	0.00	
14,800.0	90.00	179.62	10,305.0	-4,579.0	8.2	4,579.0	0.00	0.00	0.00	
14,900.0	90.00	179.62	10,305.0	-4,679.0	8.8	4,679.0	0.00	0.00	0.00	
15,000.0	90.00	179.62	10,305.0	-4,779.0	9.5	4,779.0	0.00	0.00	0.00	
15,100.0	90.00	179.62	10,305.0	-4,879.0	10.2	4,879.0	0.00	0.00	0.00	
15,200.0	90.00	179.62	10,305.0	-4,979.0	10.8	4,979.0	0.00	0.00	0.00	
15,228.0	90.00	179.62	10,305.0	-5,007.0	11.0	5,007.0	0.00	0.00	0.00	

Design Targets									
Target Name	Dip Angle (°)	Dip Dir. (°)	TVD (usft)	+N/-S (usft)	+E/-W (usft)	Northing (usft)	Easting (usft)	Latitude	Longitude
KOP(Durango 2 State #1 - plan hits target center - Point	0.00	0.00	9,827.5	120.0	-23.0	425,272.00	785,404.00	32° 10' 0.091 N	103° 32' 40.460 W
FTP(Durango 2 State #3 - plan misses target center by 145.0usft at 10218.3usft MD (10175.5 TVD, -30.6 N, -22.0 E) - Point	0.00	0.00	10,280.0	70.0	-23.0	425,222.00	785,404.00	32° 9' 59.597 N	103° 32' 40.464 W
PBHL(Durango 2 State # - plan hits target center - Point	0.00	0.00	10,305.0	-5,007.0	11.0	420,145.00	785,438.00	32° 9' 9.356 N	103° 32' 40.502 W



To convert a Magnetic Direction to a Grid Direction, Add 5.93°
To convert a Magnetic Direction to a True Direction, Add 6.35° East
To convert a True Direction to a Grid Direction, Subtract 0.42°

Lea County, NM (NAD 83 NME)

Durango 2 State #303H

Plan #1

PROJECT DETAILS: Lea County, NM (NAD 83 NME)

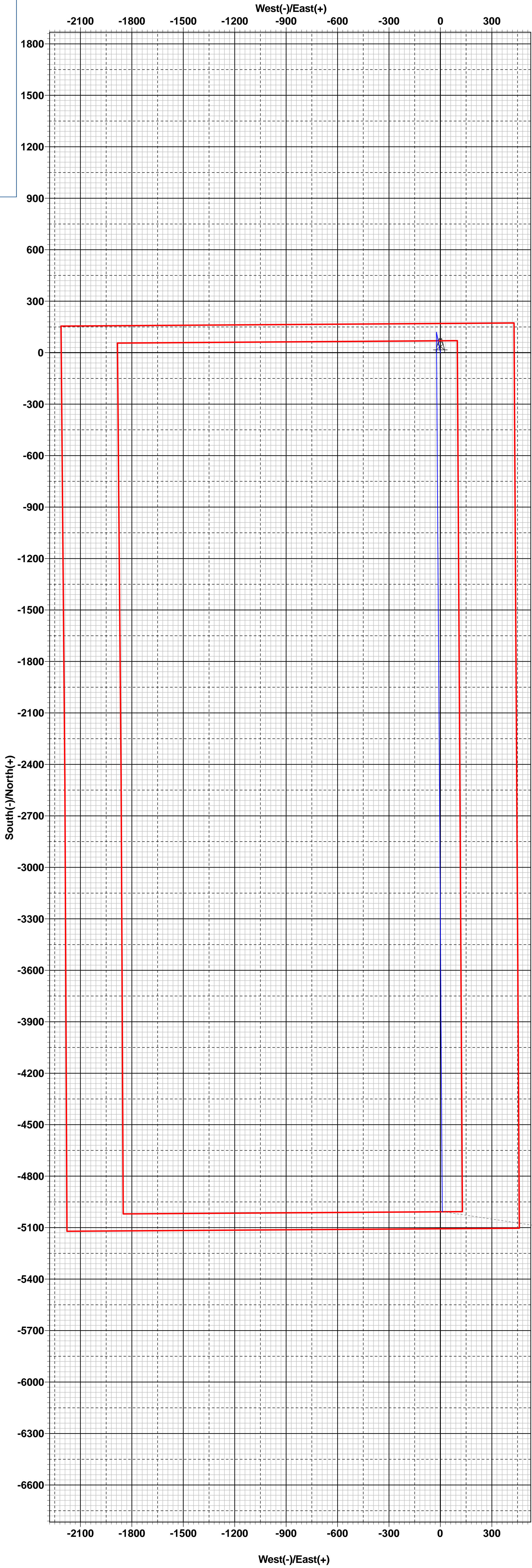
Geodetic System: US State Plane 1983
Datum: North American Datum 1983
Ellipsoid: GRS 1980
Zone: New Mexico Eastern Zone
System Datum: Mean Sea Level

WELL DETAILS: #303H				
kb = 26' @ 3523.0usft				3491.0
Northing	Easting	Latitude	Longitude	
425152.00	785427.00	32° 9' 58.902 N	103° 32' 40.203 W	

SECTION DETAILS										
Sec	MD	Inc	Azi	TVD	+N/-S	+E/-W	Dleg	TFace	VSect	Target
1	0.0	0.00	0.00	0.0	0.0	0.0	0.00	0.00	0.0	
2	1350.0	0.00	0.00	1350.0	0.0	0.0	0.00	0.00	0.0	
3	1391.5	0.83	349.15	1391.5	0.3	-0.1	2.00	349.15	-0.3	
4	9786.9	0.83	349.15	9786.0	119.7	-22.9	0.00	0.00	-119.8	
5	9828.4	0.00	0.00	9827.5	120.0	-23.0	2.00	180.00	-120.1	KOP(Durango 2 State #303H)
6	10578.4	90.00	179.62	10305.0	-357.5	-19.8	12.00	179.62	357.4	
7	15228.0	90.00	179.62	10305.0	-5007.0	11.0	0.00	0.00	5007.0	PBHL(Durango 2 State #303H)

CASING DETAILS
No casing data is available

WELLBORE TARGET DETAILS (MAP CO-ORDINATES)					
Name	TVD	+N/-S	+E/-W	Northing	Easting
KOP(Durango 2 State #303H)	9827.5	120.0	-23.0	425272.00	785404.00
PBHL(Durango 2 State #303H)	10305.0	-5007.0	11.0	420145.00	785438.00
FTP(Durango 2 State #303H)	10280.0	70.0	-23.0	425222.00	785404.00



State of New Mexico
Energy, Minerals and Natural Resources Department

Submit Electronically
Via E-permitting

Oil Conservation Division
1220 South St. Francis Dr.
Santa Fe, NM 87505

NATURAL GAS MANAGEMENT PLAN

This Natural Gas Management Plan must be submitted with each Application for Permit to Drill (APD) for a new or recompleted well.

Section 1 – Plan Description

Effective May 25, 2021

I. Operator: EOG Resources, Inc. **OGRID:** 7377 **Date:** 12/14/2022

II. Type: ☒ Original ☐ Amendment due to ☐ 19.15.27.9.D(6)(a) NMAC ☐ 19.15.27.9.D(6)(b) NMAC ☐ Other.

If Other, please describe: _____

III. Well(s): Provide the following information for each new or recompleted well or set of wells proposed to be drilled or proposed to be recompleted from a single well pad or connected to a central delivery point.

Well Name	API	ULSTR	Footages	Anticipated Oil BBL/D	Anticipated Gas MCF/D	Anticipated Produced Water BBL/D
Durango 2 State 303H		C-2-25S-33E	170' FNL & 2212' FWL	+/- 1000	+/- 3500	+/- 3000

IV. Central Delivery Point Name: Dragon 36 State CTB [See 19.15.27.9(D)(1) NMAC]

V. Anticipated Schedule: Provide the following information for each new or recompleted well or set of wells proposed to be drilled or proposed to be recompleted from a single well pad or connected to a central delivery point.

Well Name	API	Spud Date	TD Reached Date	Completion Commencement Date	Initial Flow Back Date	First Production Date
Durango 2 State 303H		01/05/23	01/30/23	03/01/23	04/01/23	05/01/23

VI. Separation Equipment: ☒ Attach a complete description of how Operator will size separation equipment to optimize gas capture.

VII. Operational Practices: ☒ Attach a complete description of the actions Operator will take to comply with the requirements of Subsection A through F of 19.15.27.8 NMAC.

VIII. Best Management Practices: ☒ Attach a complete description of Operator's best management practices to minimize venting during active and planned maintenance.

Section 2 – Enhanced Plan

EFFECTIVE APRIL 1, 2022

Beginning April 1, 2022, an operator that is not in compliance with its statewide natural gas capture requirement for the applicable reporting area must complete this section.

☒ Operator certifies that it is not required to complete this section because Operator is in compliance with its statewide natural gas capture requirement for the applicable reporting area.

IX. Anticipated Natural Gas Production:

Well	API	Anticipated Average Natural Gas Rate MCF/D	Anticipated Volume of Natural Gas for the First Year MCF

X. Natural Gas Gathering System (NGGS):

Operator	System	ULSTR of Tie-in	Anticipated Gathering Start Date	Available Maximum Daily Capacity of System Segment Tie-in

XI. Map. ☐ Attach an accurate and legible map depicting the location of the well(s), the anticipated pipeline route(s) connecting the production operations to the existing or planned interconnect of the natural gas gathering system(s), and the maximum daily capacity of the segment or portion of the natural gas gathering system(s) to which the well(s) will be connected.

XII. Line Capacity. The natural gas gathering system ☐ will ☐ will not have capacity to gather 100% of the anticipated natural gas production volume from the well prior to the date of first production.

XIII. Line Pressure. Operator ☐ does ☐ does not anticipate that its existing well(s) connected to the same segment, or portion, of the natural gas gathering system(s) described above will continue to meet anticipated increases in line pressure caused by the new well(s).

☐ Attach Operator's plan to manage production in response to the increased line pressure.

XIV. Confidentiality: ☐ Operator asserts confidentiality pursuant to Section 71-2-8 NMSA 1978 for the information provided in Section 2 as provided in Paragraph (2) of Subsection D of 19.15.27.9 NMAC, and attaches a full description of the specific information for which confidentiality is asserted and the basis for such assertion.

Section 3 - Certifications

Effective May 25, 2021

Operator certifies that, after reasonable inquiry and based on the available information at the time of submittal:

☒ Operator will be able to connect the well(s) to a natural gas gathering system in the general area with sufficient capacity to transport one hundred percent of the anticipated volume of natural gas produced from the well(s) commencing on the date of first production, taking into account the current and anticipated volumes of produced natural gas from other wells connected to the pipeline gathering system; or

☐ Operator will not be able to connect to a natural gas gathering system in the general area with sufficient capacity to transport one hundred percent of the anticipated volume of natural gas produced from the well(s) commencing on the date of first production, taking into account the current and anticipated volumes of produced natural gas from other wells connected to the pipeline gathering system.

If Operator checks this box, Operator will select one of the following:

Well Shut-In. ☐ Operator will shut-in and not produce the well until it submits the certification required by Paragraph (4) of Subsection D of 19.15.27.9 NMAC; or

Venting and Flaring Plan. ☐ Operator has attached a venting and flaring plan that evaluates and selects one or more of the potential alternative beneficial uses for the natural gas until a natural gas gathering system is available, including:

- (a) power generation on lease;
- (b) power generation for grid;
- (c) compression on lease;
- (d) liquids removal on lease;
- (e) reinjection for underground storage;
- (f) reinjection for temporary storage;
- (g) reinjection for enhanced oil recovery;
- (h) fuel cell production; and
- (i) other alternative beneficial uses approved by the division.

Section 4 - Notices

1. If, at any time after Operator submits this Natural Gas Management Plan and before the well is spud:

(a) Operator becomes aware that the natural gas gathering system it planned to connect the well(s) to has become unavailable or will not have capacity to transport one hundred percent of the production from the well(s), no later than 20 days after becoming aware of such information, Operator shall submit for OCD's approval a new or revised venting and flaring plan containing the information specified in Paragraph (5) of Subsection D of 19.15.27.9 NMAC; or

(b) Operator becomes aware that it has, cumulatively for the year, become out of compliance with its baseline natural gas capture rate or natural gas capture requirement, no later than 20 days after becoming aware of such information, Operator shall submit for OCD's approval a new or revised Natural Gas Management Plan for each well it plans to spud during the next 90 days containing the information specified in Paragraph (2) of Subsection D of 19.15.27.9 NMAC, and shall file an update for each Natural Gas Management Plan until Operator is back in compliance with its baseline natural gas capture rate or natural gas capture requirement.

2. OCD may deny or conditionally approve an APD if Operator does not make a certification, fails to submit an adequate venting and flaring plan which includes alternative beneficial uses for the anticipated volume of natural gas produced, or if OCD determines that Operator will not have adequate natural gas takeaway capacity at the time a well will be spud.

I certify that, after reasonable inquiry, the statements in and attached to this Natural Gas Management Plan are true and correct to the best of my knowledge and acknowledge that a false statement may be subject to civil and criminal penalties under the Oil and Gas Act.

Signature: *Star L Harrell*

Printed Name: Star L Harrell

Title: Sr Regulatory Specialist

E-mail Address: Star_Harrell@eogresources.com

Date: 12/14/2022

Phone: (432) 848-9161

OIL CONSERVATION DIVISION
(Only applicable when submitted as a standalone form)

Approved By:

Title:

Approval Date:

Conditions of Approval:

Natural Gas Management Plan**Items VI-VIII****VI. Separation Equipment: Attach a complete description of how Operator will size separation equipment to optimize gas capture.**

- Separation equipment will be sized to provide adequate separation for anticipated rates.
- Adequate separation relates to retention time for Liquid – Liquid separation and velocity for Gas-Liquid separation.
- Collection systems are appropriately sized to handle facility production rates on all (3) phases.
- Ancillary equipment and metering is selected to be serviced without flow interruptions or the need to release gas from the well.

VII. Operational Practices: Attach a complete description of the actions Operator will take to comply with the requirements of Subsection A through F 19.15.27.8 NMAC.**Drilling Operations**

- All flare stacks will be properly sized. The flare stacks will be located at a minimum 100' from the nearest surface hole location on the pad.
- All natural gas produced during drilling operations will be flared, unless there is an equipment malfunction and/or to avoid risk of an immediate and substantial adverse impact on safety and the environment, at which point the gas will be vented.

Completions/Recompletions Operations

- New wells will not be flowed back until they are connected to a properly sized gathering system.
- The facility will be built/sized for maximum anticipated flowrates and pressures to minimize waste.
- For flowback operations, multiple stages of separation will be used as well as excess VRU and blowers to make sure waste is minimized off the storage tanks and facility.
- During initial flowback, the well stream will be routed to separation equipment.
- At an existing facility, when necessary, post separation natural gas will be flared until it meets pipeline specifications, at which point it will be turned into a collection system.
- At a new facility, post separation natural gas will be vented until storage tanks can safely function, at which point it will be flared until it meets pipeline spec.

Production Operations

- Weekly AVOs will be performed on all facilities.
- All flares will be equipped with auto-ignition systems and continuous pilot operations.
- After a well is stabilized from liquid unloading, the well will be turned back into the collection system.
- All plunger lift systems will be optimized to limit the amount of waste.
- All tanks will have automatic gauging equipment installed.
- Leaking thief hatches found during AVOs will be cleaned and properly re-sealed.

Performance Standards

- Production equipment will be designed to handle maximum anticipated rates and pressure.
- All flared gas will be combusted in a flare stack that is properly sized and designed to ensure proper combustion.
- Weekly AVOs will be performed on all wells and facilities that produce more than 60 Mcfd.

Measurement & Estimation

- All volume that is flared and vented that is not measured will be estimated.
- All measurement equipment for flared volumes will conform to API 14.10.
- No meter bypasses will be installed.

- When metering is not practical due to low pressure/low rate, the vented or flared volume will be estimated.

VIII. Best Management Practices: Attach a complete description of Operator's best management practices to minimize venting during active and planned maintenance.

- During downhole well maintenance, EOG will use best management practices to vent as minimally as possible.
- Prior to the commencement of any maintenance, the tank or vessel will be isolated from the rest of the facilities.
- All valves upstream of the equipment will be closed and isolated.
- After equipment has been isolated, the equipment will be blown down to as low a pressure as possible into the collection system.
- If the equipment being maintained cannot be relieved into the collection system, it shall be released to a tank where the vapor can either be captured or combusted if possible.
- After downhole well maintenance, natural gas will be flared until it reaches pipeline specification.