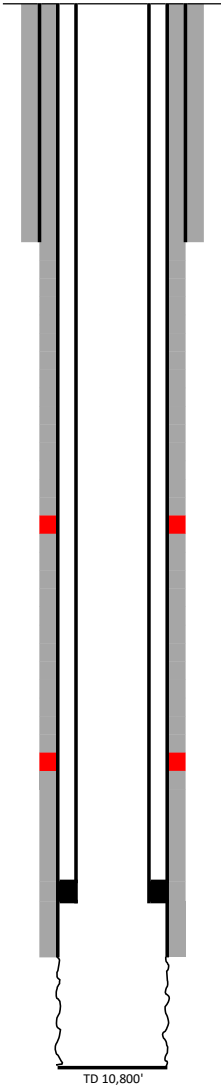




OXY USA WTP LP.

CURRENT WBD

MOC SWD #1	
API#	30-015-21669
Loc.	1980' FSL, 1960' FWL S7-T20S-R25E
County/State	Eddy County, NM
GL	3548'



13 3/8" casing @ 315'
Cemented w/ 300sx +9yards Cement TOC - Surface

8 5/8" 24# J-55 Casing set @ 1250'
Cemented w/ 610 sx Cement, TOC - Surface

DV TOOL @ 5976'

DV TOOL @ 9476'

2 7/8" 6.5# L-80 IPC Tubing set @ 10,202'
AS-1X Packer set @ 10,194'
5 1/2" 17# K-55 & N-80 casing set @ 10,277'
Cemented w/ 2175 sx Cement, TOC Surface Circulated

Openhole Completion 10,277'-10,800'

TD 10,800'

FORMATION TOPS

SAN ANDRES	610
GLORIETA	1,418
TUBB	2,163
ABO	3,396
3RD BONESPRING	6,400
WOLFCAMP	6,600
CISCO-CANYON	7,650
STRAWN	8,225
ATOKA	8,515
MORROW	9,120
MISSISSIPPIAN	9,710
WOODFORD	10,225
SILURO-DEVONIAN	10,252

District I
1625 N. French Dr., Hobbs, NM 88240
Phone:(575) 393-6161 Fax:(575) 393-0720
District II
811 S. First St., Artesia, NM 88210
Phone:(575) 748-1283 Fax:(575) 748-9720
District III
1000 Rio Brazos Rd., Aztec, NM 87410
Phone:(505) 334-6178 Fax:(505) 334-6170
District IV
1220 S. St Francis Dr., Santa Fe, NM 87505
Phone:(505) 476-3470 Fax:(505) 476-3462

State of New Mexico
Energy, Minerals and Natural Resources
Oil Conservation Division
1220 S. St Francis Dr.
Santa Fe, NM 87505

DEFINITIONS

Action 107071

DEFINITIONS

Operator: OXY USA WTP LIMITED PARTNERSHIP P.O. Box 4294 Houston, TX 772104294	OGRID: 192463
	Action Number: 107071
	Action Type: [UF-SA] Seismicity Response Protocol Information (UF-SA-SRPI)

DEFINITIONS

For the sake of brevity and completeness, please allow for the following in all groups of questions and for the rest of this application: <ul style="list-style-type: none">this application's operator, hereinafter "this operator".
This form must be completed as part of OCD's Seismicity Response Protocol and updated after any qualifying event thereafter.
Applicability: This form must be completed for each well classified as an Underground Injection Control (UIC) Class II disposal well or Class II enhanced recovery injection well with active injection authority (wells). "Active injection authority" means a well that is authorized to inject pursuant to an administrative permit or hearing order. This includes wells that have an approved Application for Permit to Drill and have an approved injection permit but have not yet been drilled or commenced injection.

District I1625 N. French Dr., Hobbs, NM 88240
Phone:(575) 393-6161 Fax:(575) 393-0720**District II**811 S. First St., Artesia, NM 88210
Phone:(575) 748-1283 Fax:(575) 748-9720**District III**1000 Rio Brazos Rd., Aztec, NM 87410
Phone:(505) 334-6178 Fax:(505) 334-6170**District IV**1220 S. St Francis Dr., Santa Fe, NM 87505
Phone:(505) 476-3470 Fax:(505) 476-3462

State of New Mexico
Energy, Minerals and Natural Resources
Oil Conservation Division
1220 S. St Francis Dr.
Santa Fe, NM 87505

QUESTIONS

Action 107071

QUESTIONS

Operator: OXY USA WTP LIMITED PARTNERSHIP P.O. Box 4294 Houston, TX 772104294	OGRID: 192463
	Action Number: 107071
	Action Type: [UF-SA] Seismicity Response Protocol Information (UF-SA-SRPI)

QUESTIONS

Prerequisites	
Well	[30-015-21669] MOC SWD #001

Seismic Event Information*The source and reference ID is required, if you would like to submit information of a new seismic event.*

Source of information (i.e., USGS, NMTSO, TexNet, other)	USGS
Reference ID from source of information	us6000hl7w
Magnitude	3.1
Latitude	32.66400
Longitude	-104.42800
Date of occurrence	05/14/2022
Depth of occurrence (kilometers)	5.00

Injection Order*Please indicate the latest (current) injection order permitting injection for this well.*

Admin Order (SWD-#)	SWD-448-0 [pDEV0020900448]
Hearing Order (R-#)	Not answered.

Well Information*The following information is required for each well permitted within a 10-mile proximity of the epicenter.*

Distance from epicenter (miles)	7
Top perforated and/or open-hole interval (vertical depth in feet)	10,200
Bottom perforated and/or open-hole interval (vertical depth in feet)	11,000
Formation(s) completed	SWD; DEVONIAN

Well Information Prior to Injection Volume Reduction*Daily rates and pressures are based on the active injection days during the prior 6-month period.*

Average daily injection rate (BBLS per day), prior to reduction	0
Average injection daily pressure (PSI), prior to reduction	0
Well Type (i.e., Commercial, Lease Only, Single Operator)	SINGLE

Well Information After Injection Volume Reduction*The following information is required for each well permitted within a 10-mile proximity of the epicenter.*

Required injection rate reduction percentage (0%, 25%, 50%, Shut-in)	0%
Average daily injection rate (BBLS per day) limit, post reduction	0
Average injection daily pressure (PSI) limit, post reduction	0
Reduction start date	05/15/2022
Reduction achieved date	05/15/2022

District I

1625 N. French Dr., Hobbs, NM 88240
Phone:(575) 393-6161 Fax:(575) 393-0720

District II

811 S. First St., Artesia, NM 88210
Phone:(575) 748-1283 Fax:(575) 748-9720

District III

1000 Rio Brazos Rd., Aztec, NM 87410
Phone:(505) 334-6178 Fax:(505) 334-6170

District IV

1220 S. St Francis Dr., Santa Fe, NM 87505
Phone:(505) 476-3470 Fax:(505) 476-3462

State of New Mexico
Energy, Minerals and Natural Resources
Oil Conservation Division
1220 S. St Francis Dr.
Santa Fe, NM 87505

ACKNOWLEDGMENTS

Action 107071

ACKNOWLEDGMENTS

Operator: OXY USA WTP LIMITED PARTNERSHIP P.O. Box 4294 Houston, TX 772104294	OGRID: 192463
	Action Number: 107071
	Action Type: [UF-SA] Seismicity Response Protocol Information (UF-SA-SRPI)

ACKNOWLEDGMENTS

<input checked="" type="checkbox"/>	This operator acknowledges that it must take the appropriate following action(s) as part of its seismic response protocol:
<input checked="" type="checkbox"/>	This operator shall report the daily injection volumes and pressures for each well on a weekly basis on the form prescribed by the OCD. The report is due on the Wednesday the week following the weekly monitoring interval.
<input checked="" type="checkbox"/>	This operator shall start or continue to digitally measure injection volumes and pressures for each well at a minimum of an hourly basis, and shall archive the data and make it available to OCD upon receipt of a written request.
<input checked="" type="checkbox"/>	This operator shall monitor seismicity events with magnitudes equal to or greater than M2.5 within a radius of 10 miles around each well using USGS / NMTSO data, and shall archive the data and make it available to OCD upon receipt of a written request.
<input checked="" type="checkbox"/>	This operator shall notify OCD and provide updated pertinent well information within 24 hours of an event greater than M 2.5 within a radius of 10 miles around each well using this OCD form.
<input checked="" type="checkbox"/>	After each event greater than M 2.5 within a radius of 10 miles around each well, this operator shall inspect well head and well equipment of each well to ensure proper working order. As part of this inspection, Operator should evaluate whether a Bradenhead test or MIT is warranted to ensure wellbore integrity.
<input checked="" type="checkbox"/>	I certify that, after reasonable inquiry and based on the available information at the time of submittal, this Seismic Information Form is true and correct to the best of my knowledge, and I acknowledge that a false statement may be subject to civil and criminal penalties under the Oil and Gas Act.

District I
1625 N. French Dr., Hobbs, NM 88240
Phone:(575) 393-6161 Fax:(575) 393-0720
District II
811 S. First St., Artesia, NM 88210
Phone:(575) 748-1283 Fax:(575) 748-9720
District III
1000 Rio Brazos Rd., Aztec, NM 87410
Phone:(505) 334-6178 Fax:(505) 334-6170
District IV
1220 S. St Francis Dr., Santa Fe, NM 87505
Phone:(505) 476-3470 Fax:(505) 476-3462

State of New Mexico
Energy, Minerals and Natural Resources
Oil Conservation Division
1220 S. St Francis Dr.
Santa Fe, NM 87505

CONDITIONS

Action 107071

CONDITIONS

Operator: OXY USA WTP LIMITED PARTNERSHIP P.O. Box 4294 Houston, TX 772104294	OGRID: 192463
	Action Number: 107071
	Action Type: [UF-SA] Seismicity Response Protocol Information (UF-SA-SRPI)

CONDITIONS

Created By	Condition	Condition Date
aschaefer	Accepted for record	1/6/2023