

Submit a Copy To Appropriate District
Office
District I – (575) 393-6161
1625 N. French Dr., Hobbs, NM 88240
District II – (575) 748-1283
811 S. First St., Artesia, NM 88210
District III – (505) 334-6178
1000 Rio Brazos Rd., Aztec, NM 87410
District IV – (505) 476-3460
1220 S. St. Francis Dr., Santa Fe, NM
87505

State of New Mexico
Energy, Minerals and Natural Resources

Form C-103
Revised July 18, 2013

OIL CONSERVATION DIVISION
1220 South St. Francis Dr.
Santa Fe, NM 87505

WELL API NO. 30-025-03810
5. Indicate Type of Lease STATE <input checked="" type="checkbox"/> FEE <input type="checkbox"/>
6. State Oil & Gas Lease No.
7. Lease Name or Unit Agreement Name Lovington San Andres Unit
8. Well Number 47
9. OGRID Number 241333
10. Pool name or Wildcat Lovington Grayburg SA

SUNDRY NOTICES AND REPORTS ON WELLS (DO NOT USE THIS FORM FOR PROPOSALS TO DRILL OR TO DEEPEN OR PLUG BACK TO A DIFFERENT RESERVOIR. USE "APPLICATION FOR PERMIT" (FORM C-101) FOR SUCH PROPOSALS.)	
1. Type of Well: Oil Well <input type="checkbox"/> Gas Well <input checked="" type="checkbox"/> Other Injector	
2. Name of Operator Chevron Midcontinent, L.P.	
3. Address of Operator 6301 Deauville Blvd Midland, Texas 79706	
4. Well Location Unit Letter <u>K</u> : 1980 feet from the <u>South</u> line and 1980 feet from the <u>West</u> line Section <u>1</u> Township <u>17 S</u> Range <u>36E</u> NMPM County <u>Lea</u>	
11. Elevation (Show whether DR, RKB, RT, GR, etc.) 3836' GR	

12. Check Appropriate Box to Indicate Nature of Notice, Report or Other Data

NOTICE OF INTENTION TO:		SUBSEQUENT REPORT OF:	
PERFORM REMEDIAL WORK <input type="checkbox"/>	PLUG AND ABANDON <input type="checkbox"/>	REMEDIAL WORK <input type="checkbox"/>	ALTERING CASING <input type="checkbox"/>
TEMPORARILY ABANDON <input type="checkbox"/>	CHANGE PLANS <input type="checkbox"/>	COMMENCE DRILLING OPNS. <input type="checkbox"/>	P AND A <input checked="" type="checkbox"/>
PULL OR ALTER CASING <input type="checkbox"/>	MULTIPLE COMPL <input type="checkbox"/>	CASING/CEMENT JOB <input type="checkbox"/>	PNR <input type="checkbox"/>
DOWNHOLE COMMINGLE <input type="checkbox"/>			
CLOSED-LOOP SYSTEM <input type="checkbox"/>			
OTHER: <input type="checkbox"/>		OTHER: <input type="checkbox"/>	

13. Describe proposed or completed operations. (Clearly state all pertinent details, and give pertinent dates, including estimated date of starting any proposed work). SEE RULE 19.15.7.14 NMAC. For Multiple Completions: Attach wellbore diagram of proposed completion or recompletion.

See attached plugging report and as plugged wellbore diagram.

Spud Date:

6/3/1939

Rig Release Date:

I hereby certify that the information above is true and complete to the best of my knowledge and belief.

SIGNATURE Mark Torres TITLE P&A Engineer DATE 1/16/2023

Type or print name Mark Torres E-mail address: marktorres@chevron.com PHONE: 989-264-2525

For State Use Only

APPROVED BY: Kerry Fortner TITLE Compliance Officer A DATE 1/31/23

Conditions of Approval (if any)



EMC Ops Summary - External

Well Name LOVINGTON SAN ANDRES UNIT 047	Field Name Lovington	Lease Lovington San Andres Unit	Area Central
Business Unit EMC	County/ Parish Lea	Global Metrics Region EMC US East	Surface UWI 3002503810

Basic Well Data

Current RKB Elevation	Original RKB Elevation (ft)	Latitude (°)	Longitude (°)
-----------------------	-----------------------------	--------------	---------------

Phases

Actual Start Date	Actual End Date	Phase 1	Phase 2	Time Log Hrs (hr)	Percent Problem Time (%)
9/12/2022 07:00	9/12/2022 12:00	PREP	FAC	5.00	
12/1/2022 07:00	12/1/2022 09:00	MOB	MOVEON		
12/2/2022 12:00	12/2/2022 15:00	ABAN	TBGPULL	1.00	
1/5/2023 09:00	1/10/2023 11:00	ABAN	CMTPLUG	34.75	
		REST	FAC		

Start Date	Summary
9/12/2022	Reivew JSA and SIF, check well for pressure, 0 PSI on all 3 strings. crew hand dug risers and installed new risers. Surface and Intermedaite risers were T'ed due to plugs, production had new risers installed. Crew back filled and attempted hot bolting. Removed flow line and moved to next well.
10/13/2022	Held safety meeting with crew. R/U cement truck. PT surface lines and equipment to 1500 psi. Test was good. Performed injection test. 2.5 bpm at 1100 psi. PT BS to 500 psi for 15 mins. Test was good. Mixed and pumped 40 sks of 14.8 ppg Class C cement and displaced with 18.5 bbls. ETOC 4520'
12/2/2022	Held safety meeting with crew. spot in Rig check pressure surf. 0psi, inter. 10psi, TBG 80psi, shut down for wind
12/3/2022	Held safety meeting with crew. spot in Rig check pressure surf. 0psi, inter. 10psi, TBG 80psi, shut down for wind
12/5/2022	RU WSU // NU BOP // LD 2 3/8 IPC TBG // Conduct Bubble Test // ND BOP // Move To LSAU 48
1/5/2023	Held safety meeting with crew. MOB unit with porper journey managment to LSAU 47. R/U CT and all supporting equip. PT BOP. PT well bore. TIH and tagged at 4455'. TOH. WOC. PT. Put on TCP (TP) guns and TIH to 3154'. Perf at 3154'. Unable to established injection. Pressured up to 700 psi and held. TIH and tagged TOC at 4152'. Spotted 17 bbls MLF. Spotted 27 sks of Class C from 3876' to 3603'. TOH to 3204'. Spotted 27 sks of Class C from 3204' to 2931'. TOH to surface. Shut in well secured location.
1/6/2023	Held safety meeting with crew. PT CMT plug to 500 psi. Put on TCP (TP) guns. TIH to 2028'. Perf at 2028'. Established circulation with 3 bpm at 120 psi. Circ clean. Tagged TOC at 2994'. Spotted MLF up to 2028. TOH. Pumped from surface 47 sks of Class C. ETOC 1826. WOC. Attempt to PT, began circulating. TIH and attempt to tag. No tag. Kerry Fortner approved 100 sk plug, 429' inside and out of porduction CSG. Pump from surface 100 sks of Class C. Displaced with 37 bbls. ETOC 1599'. Got CMT returns to surface at the end of displacement. Contacted engineer, decided to circulate out all CMT. Pumped 115 bbls of Fresh water. Pumped 115 bbls of 10 ppg brine. Shut in the well and Secure location.
1/9/2023	Held safety meeting with crew. Pumped from surface 47 sks of Class C cement from 2028' to 1826'. WOC. TIH and tagged TOC at 1887'. Upgraded with 27 sks of Class C to 1614'. TOH. TIH with perf guns. Shoot at 350'. Attempt to circ through surface. Getting .25 bpm.
1/10/2023	Held safety meeting with crew. RIH and perforated at 350' with DP TCP. TOH. CC with 35 bbls of 10 ppg brine water. Pumped 150 sks of Class C down the production CSG and up the both annulus to surface. CMT to surface on all 3 strings. RDMO CTU.



EMC Ops Summary - External

Well Name LOVINGTON SAN ANDRES UNIT 047	Field Name Lovington	Lease Lovington San Andres Unit	Area Central
Business Unit EMC	County/ Parish Lea	Global Metrics Region EMC US East	Surface UWI 3002503810

Basic Well Data

Current RKB Elevation	Original RKB Elevation (ft)	Latitude (°)	Longitude (°)
-----------------------	-----------------------------	--------------	---------------

Phases

Actual Start Date	Actual End Date	Phase 1	Phase 2	Time Log Hrs (hr)	Percent Problem Time (%)
9/12/2022 07:00	9/12/2022 12:00	PREP	FAC	5.00	
12/1/2022 07:00	12/1/2022 09:00	MOB	MOVEON		
12/2/2022 12:00	12/2/2022 15:00	ABAN	TBGPULL	1.00	
1/5/2023 09:00	1/10/2023 11:00	ABAN	CMTPLUG	34.75	
		REST	FAC		

Start Date	Summary
9/12/2022	Reivew JSA and SIF, check well for pressure, 0 PSI on all 3 strings. crew hand dug risers and installed new risers. Surface and Intermedaite risers were T'ed due to plugs, production had new risers installed. Crew back filled and attempted hot bolting. Removed flow line and moved to next well.
10/13/2022	Held safety meeting with crew. R/U cement truck. PT surface lines and equipment to 1500 psi. Test was good. Performed injection test. 2.5 bpm at 1100 psi. PT BS to 500 psi for 15 mins. Test was good. Mixed and pumped 40 sks of 14.8 ppg Class C cement and displaced with 18.5 bbls. ETOC 4520'
12/2/2022	Held safety meeting with crew. spot in Rig check pressure surf. 0psi, inter. 10psi, TBG 80psi, shut down for wind
12/3/2022	Held safety meeting with crew. spot in Rig check pressure surf. 0psi, inter. 10psi, TBG 80psi, shut down for wind
12/5/2022	RU WSU // NU BOP // LD 2 3/8 IPC TBG // Conduct Bubble Test // ND BOP // Move To LSAU 48
1/5/2023	Held safety meeting with crew. MOB unit with porper journey managment to LSAU 47. R/U CT and all supporting equip. PT BOP. PT well bore. TIH and tagged at 4455'. TOH. WOC. PT. Put on TCP (TP) guns and TIH to 3154'. Perf at 3154'. Unable to established injection. Pressured up to 700 psi and held. TIH and tagged TOC at 4152'. Spotted 17 bbls MLF. Spotted 27 sks of Class C from 3876' to 3603'. TOH to 3204'. Spotted 27 sks of Class C from 3204' to 2931'. TOH to surface. Shut in well secured location.
1/6/2023	Held safety meeting with crew. PT CMT plug to 500 psi. Put on TCP (TP) guns. TIH to 2028'. Perf at 2028'. Established circulation with 3 bpm at 120 psi. Circ clean. Tagged TOC at 2994'. Spotted MLF up to 2028. TOH. Pumped from surface 47 sks of Class C. ETOC 1826. WOC. Attempt to PT, began circulating. TIH and attempt to tag. No tag. Kerry Fortner approved 100 sk plug, 429' inside and out of porduction CSG. Pump from surface 100 sks of Class C. Displaced with 37 bbls. ETOC 1599'. Got CMT returns to surface at the end of displacement. Contacted engineer, decided to circulate out all CMT. Pumped 115 bbls of Fresh water. Pumped 115 bbls of 10 ppg brine. Shut in the well and Secure location.
1/9/2023	Held safety meeting with crew. Pumped from surface 47 sks of Class C cement from 2028' to 1826'. WOC. TIH and tagged TOC at 1887'. Upgraded with 27 sks of Class C to 1614'. TOH. TIH with perf guns. Shoot at 350'. Attempt to circ through surface. Getting .25 bpm.
1/10/2023	Held safety meeting with crew. RIH and perforated at 350' with DP TCP. TOH. CC with 35 bbls of 10 ppg brine water. Pumped 150 sks of Class C down the production CSG and up the both annulus to surface. CMT to surface on all 3 strings. RDMO CTU.

CURRENT
WELLBORE DIAGRAM
LSAU 47

Created: 8/25/2008
Updated: 9/9/2008
Lease: Lovington San Andres
Surf Location: 1980' FSL & 1980' FWL
BH Location: _____
County: Lea
Current Status: Active Water Injector
State: NM

By: da Silva
By: CAYN
CHEVNO: FA4957
KB: _____
DF: 3836'
GL: _____

Field: Lovington
Well No.: 47
Twp/Rng: 17S 36E
Unit Ltr & Section: K/1
API: 30-025-03810
Original Spud Date: 6/3/1939
Original Compl. Date: _____
Formation: Grayburg/San Andres

Surface Csg.

Size: 13"
Wt.: 50#/ft
Set @: 297'
Sxs cmt: 250
Circ: YES
TOC: _____
Hole Size: 17-1/2"

Intermediate Csg. ("Salt String")

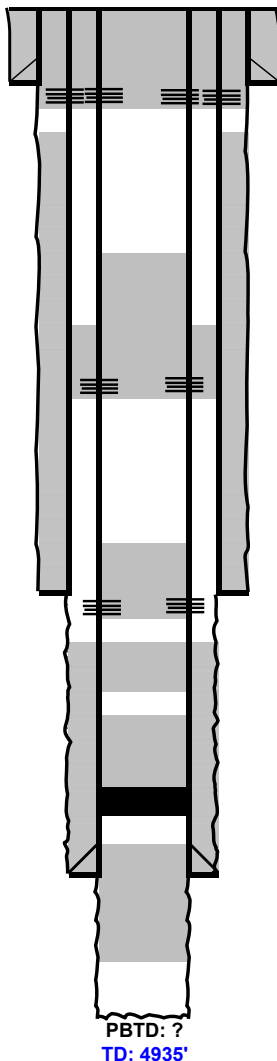
Size: 8-5/8"
Wt.: 32#/ft
Set @: 3104'
Sxs Cmt: 500
Circ: NO
TOC: 628' **CALC**
Hole Size: 11"

Production Csg. ("Oil String")

Size: 5-1/2"
Wt.: 17#
Set @: 4620'
Sxs Cmt: 150
Circ: _____
TOC: 3545' **CALC**
Hole Size: 7-7/8"

Open Hole: 4620-4944'
Size: _____

Rustler	1,936	
Salt	2,028	
Tansil	2,870	
Seven Rivers	3,259	
Queen	3,876	
Grayburg	4,327	
San Andres	4,550	
TD	4,944	



1/10/2023: Perf @ 350', Circ all strings to surface w/ 150 sx Class C

1/9/2023: Spot 27 sx Class C f/ 1,887' - 1,613'

1/6/2023: Perf @ 2,028' (establish circ up int csg annulus)
Circ 47 sx Class C f/ 2,028' (failed PT, no tag)
Circ 100 sx Class C f/ 2,028' (failed PT, no tag)
1/9/2023: Circ 47 sx Class C f/ 2,028' (passed PT, tagged @ 1,887')

1/5/2023: Perf @ 3,104' (unable to establish injection)
Spot 27 sx Class C f/ 3,204' - 2,931'

1/5/2023: Spot 27 sx Class C f/ 3,876' - 3,603'

1/5/2023: Tag packer on Coil Tbg (4,455' CTM)
Spot 27 sx Class C f/ 4,455' - 4,182' (Tagged @ 4,152')

12/3/2022: Release on/off tool and LD production tbg
Production packer left at 4,467'
10/12/22: Bullhead 40 sx Class C below packer
Est TOC @ 4,520'

District I
1625 N. French Dr., Hobbs, NM 88240
Phone:(575) 393-6161 Fax:(575) 393-0720

District II
811 S. First St., Artesia, NM 88210
Phone:(575) 748-1283 Fax:(575) 748-9720

District III
1000 Rio Brazos Rd., Aztec, NM 87410
Phone:(505) 334-6178 Fax:(505) 334-6170

District IV
1220 S. St Francis Dr., Santa Fe, NM 87505
Phone:(505) 476-3470 Fax:(505) 476-3462

State of New Mexico
Energy, Minerals and Natural Resources
Oil Conservation Division
1220 S. St Francis Dr.
Santa Fe, NM 87505

COMMENTS

Action 176271

COMMENTS

Operator: CHEVRON U S A INC 6301 Deauville Blvd Midland, TX 79706	OGRID: 4323
	Action Number: 176271
	Action Type: [C-103] Sub. Plugging (C-103P)

COMMENTS

Created By	Comment	Comment Date
plmartinez	DATA ENTRY PM	2/1/2023

District I
1625 N. French Dr., Hobbs, NM 88240
Phone:(575) 393-6161 Fax:(575) 393-0720

District II
811 S. First St., Artesia, NM 88210
Phone:(575) 748-1283 Fax:(575) 748-9720

District III
1000 Rio Brazos Rd., Aztec, NM 87410
Phone:(505) 334-6178 Fax:(505) 334-6170

District IV
1220 S. St Francis Dr., Santa Fe, NM 87505
Phone:(505) 476-3470 Fax:(505) 476-3462

State of New Mexico
Energy, Minerals and Natural Resources
Oil Conservation Division
1220 S. St Francis Dr.
Santa Fe, NM 87505

CONDITIONS

Action 176271

CONDITIONS

Operator: CHEVRON U S A INC 6301 Deauville Blvd Midland, TX 79706	OGRID: 4323
	Action Number: 176271
	Action Type: [C-103] Sub. Plugging (C-103P)

CONDITIONS

Created By	Condition	Condition Date
kfortner	Need C103Q and Marker Photo to release	1/31/2023